

Thames Tideway Tunnel
Thames Water Utilities Limited



Application for Development Consent

Application Reference Number: WWO10001

Code of Construction Practice Part B: Site Specific Requirements

Albert Embankment Foreshore - Revised 3 March 2014

Doc Ref: **APP178.27**

Folder **215**
3 March 2014

DCO-DT-APP-ZZ100-782700

**Thames
Tideway Tunnel**



Creating a cleaner, healthier River Thames



Code of Construction Practice Part B: Site-specific requirements

Albert Embankment Foreshore

This page left intentionally blank

Thames Tideway Tunnel

Code of Construction Practice Part B Albert Embankment Foreshore

List of contents

	Page number
1 Introduction	1
2 General requirements	2
3 Communications and community/stakeholder liaison	2
4 Site operation	2
5 Public access, highway and river transport	3
6 Noise and vibration	5
7 Air quality.....	5
8 Water resources	5
9 Land quality	6
10 Waste management and resource use.....	6
11 Ecology (aquatic and terrestrial)	6
12 Historic environment	6
13 Other	7

List of figures

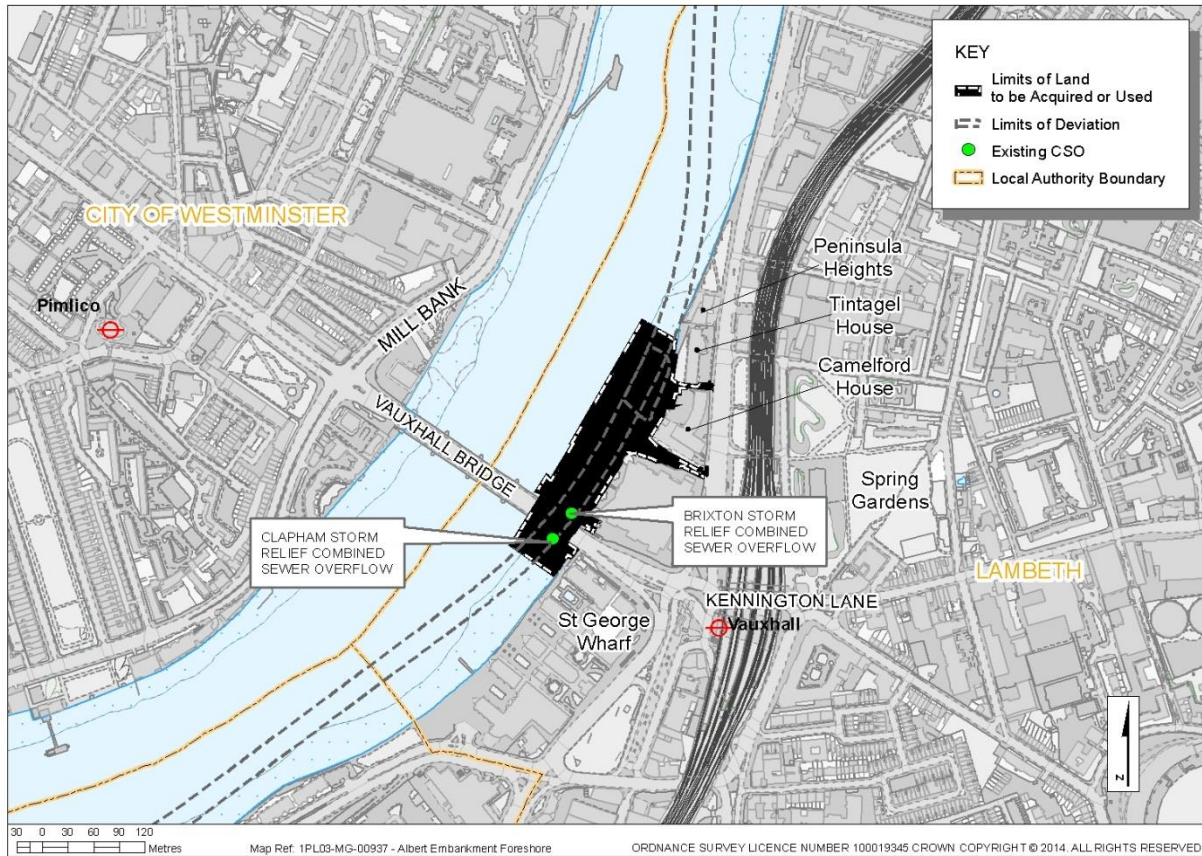
	Page number
Figure 1.1 Albert Embankment Foreshore: Site context and location plan	2
Figure 13.1 Known Mesolithic timbers in the foreshore	7

This page left intentionally blank

1 Introduction

- 1.1.1 All works described in this document are to be managed and performed to meet the health and safety vision of 'Zero Incidents, Zero Harm, Zero Compromise' for the Thames Tideway Tunnel project (the 'project').
- 1.1.2 The *Code of Construction Practice (CoCP)* comprises two parts:
 - a. Part A: General requirements. These measures are applicable project wide.
 - b. Part B: Site-specific requirements. These are site-specific measures where deviations from the general requirements are indicated in Part A.
- 1.1.3 This document forms the *CoCP* Part B for the project works at the Albert Embankment Foreshore site and sets out detailed site-specific measures including working hours, site set-up and servicing arrangements, taking into account environmental matters and consultations with the London Borough of Lambeth and other stakeholders.
- 1.1.4 For ease of reference, this document mirrors the headings in Part A. It sets out site-specific issues and deviations from Part A; therefore where no site-specific measures are specified, reference should be made to Part A.
- 1.1.5 A plan showing the location of the site is shown in Figure 1.1 overleaf.

Figure 1.1 Albert Embankment Foreshore: Site context and location plan



2 General requirements

2.1.1 As per the CoCP Part A.

3 Communications and community/stakeholder liaison

3.1.1 As per the CoCP Part A.

4 Site operation

Topic	Site-specific requirement
Working hours	The following working hours shall apply to this site: <ol style="list-style-type: none"> a. standard b. extended c. continuous during construction of the Clapham/Brixton connection tunnel. When other types of working hours (CoCP Part A, Table 4.1) are required, these will be subject to consent from the local authority under Section 61 of

Topic	Site-specific requirement
	the Control of Pollution Act 1974.
Site layout	Suitable protection, such as concrete interlocking block structure, or similar, shall be placed on areas of foreshore between the working areas to enable vehicle movements to transport materials.
Site security/hoarding requirements	The hoarding shall incorporate suitable art work and viewing windows, as defined in <i>CoCP</i> Part A para. 4.3.4a and b. The hoarding height shall be 3.6m at this site.
River works	As per the <i>CoCP</i> Part A.
Other items	A separate specification for security measures applies on this site. The contractor shall produce a site-specific lighting management plan. The lighting scheme shall address impacts on terrestrial and aquatic ecology and include the use of low level directional lighting, where possible, while providing safe working conditions.

5 Public access, highway and river transport

Topic	Site-specific requirement
Site access and gates	<p>Access to the site shall be from Vauxhall Gyrotory and Albert Embankment.</p> <p>There will be occasional use of Lack's Dock, limited wherever possible, for:</p> <ol style="list-style-type: none"> a. site servicing b. large construction plant deliveries and pick-ups c. excavated material which is unable to be removed by barge, due to constraints including contaminated material; and d. completion works. <p>The maximum number of vehicles accessing the site via Lack's Dock during the construction period will be no more than 500 as in DCO Requirement ALBEF 20.</p> <p>The security barrier shall be positioned at the entrance to Lack's Dock to enable a standard rigid tipper vehicle to sit wholly off Albert Embankment (A3036) while awaiting barrier operation.</p> <p>The existing security kiosk at Lacks Dock shall be relocated and utilised for joint access security for the</p>

Topic	Site-specific requirement
	<p>project and London Duck Tours Limited, unless agreed otherwise.</p> <p>Access to Lack's Dock for London Duck Tours Limited shall be maintained throughout the works, unless agreed otherwise.</p> <p>Vehicles shall turn left in and out of the site only from the new site access road and Lack's Dock and exit northbound along Albert Embankment.</p> <p>Drivers of any vehicles shall obtain security clearance before arriving at the site. The method for obtaining this clearance will be detailed in the security plan approved under DCO Requirement ALBEF 20.</p> <p>Vehicles arriving at the site entrance without clearance to access the site shall be denied entry and leave the site via a left turn onto Albert Embankment under the supervision of a Traffic Marshal to prevent conflict with other road users on Albert Embankment, or vehicles entering the Lack's Dock or Camelford House vehicle entrance. Any large vehicle denied access that is unable to turn off the highway shall reverse onto Albert Embankment under the supervision of a Traffic Marshal.</p> <p>A Traffic Marshal shall be stationed at the entrance to Lack's Dock to manage potential conflicts (eg, between incoming/outgoing London Duck Tours vehicles) and ensure that no vehicles queue/wait on Albert Embankment.</p>
Traffic management	<p>Drivers of large vehicles exiting the site shall be made aware that the vehicle may encroach into the off-side northbound lane.</p>
Event restrictions	<p>Large crowds are expected in the Vauxhall area on New Year's Eve and the contractor shall make arrangements for additional security and implement any other measures within the contractor's site security plan.</p>
River transport	<p>As per the CoCP Part A.</p>
Other	<p>Signage shall be provided for pedestrian diversions (eg, the Thames Path) to clearly identify alternative routes during construction.</p>

6 Noise and vibration

Topic	Site-specific requirement
<p>Control measures</p> <p>The noise and vibration control measures shall be detailed (and may be modified or added to) in Section 61 consent applications to the local authority.</p>	<p>Except for the anchor piles, the contractor shall construct the cofferdam using push piling unless this is determined to be impossible. The first 'anchor' piles shall be installed at a location as far away from the closest sensitive receptors, including Tintagel House, Camelford House and Vauxhall Cross, as possible.</p> <p>Where push piling is determined to be impossible, this shall be demonstrated by the contractor, who shall make an application to the local authority to use an alternative piling method through the Section 61 dispensation process (see Appendix A, Section A.1 in the <i>CoCP</i> Part A) or through contingency measures and arrangements if included in the original Section 61 consent.</p> <p>Material shall be compacted onsite using machinery that generates the lowest practicable vibration levels that can achieve the required level of compaction. Specifically, large vibratory rollers shall only be used where vibration levels can be controlled to less than the impact criteria set out in the <i>Environmental Statement</i>, Vol 16: Albert Embankment Foreshore, Tables 9.5.3 and 9.5.4.</p>
Other	N/A

7 Air quality

Topic	Site-specific requirement
Vehicle and plant emissions	As per the <i>CoCP</i> Part A.
Dust emissions/control	As per the <i>CoCP</i> Part A.
Odour	As per the <i>CoCP</i> Part A.
Other	N/A

8 Water resources

Topic	Site-specific requirement
Control of pollution: surface water/groundwater	The area of foreshore between working sites shall be monitored for spillage of oils, fuels and other materials during use. The contractor's Pollution Incident Control Plan shall include specific control

	and mitigation measures for this location.
Control on abstraction	As per the <i>CoCP</i> Part A.
Ground treatment	As per the <i>CoCP</i> Part A.
Other	N/A

9 Land quality

Topic	Site-specific requirement
Site works	As per the <i>CoCP</i> Part A.
Site-specific issues/mitigation	As per the <i>CoCP</i> Part A.

10 Waste management and resource use

Topic	Site-specific requirement
Excavated material	As per the <i>CoCP</i> Part A.
Resource usage	As per the <i>CoCP</i> Part A.
Other	N/A

11 Ecology (aquatic and terrestrial)

Topic	Site-specific requirement
Protection of habitats	<p>A membrane shall be installed between the riverbed and any temporary back fill material to prevent contamination of juvenile fish habitat and preserve potential archaeology.</p> <p>Areas of foreshore used for temporary works shall be restored to a similar condition with similar materials as prior to the works.</p>
Protection of trees	Replacement trees shall be planted for those lost along Albert Embankment. Retained vegetation shall be protected during the works.
Other	N/A

12 Historic environment

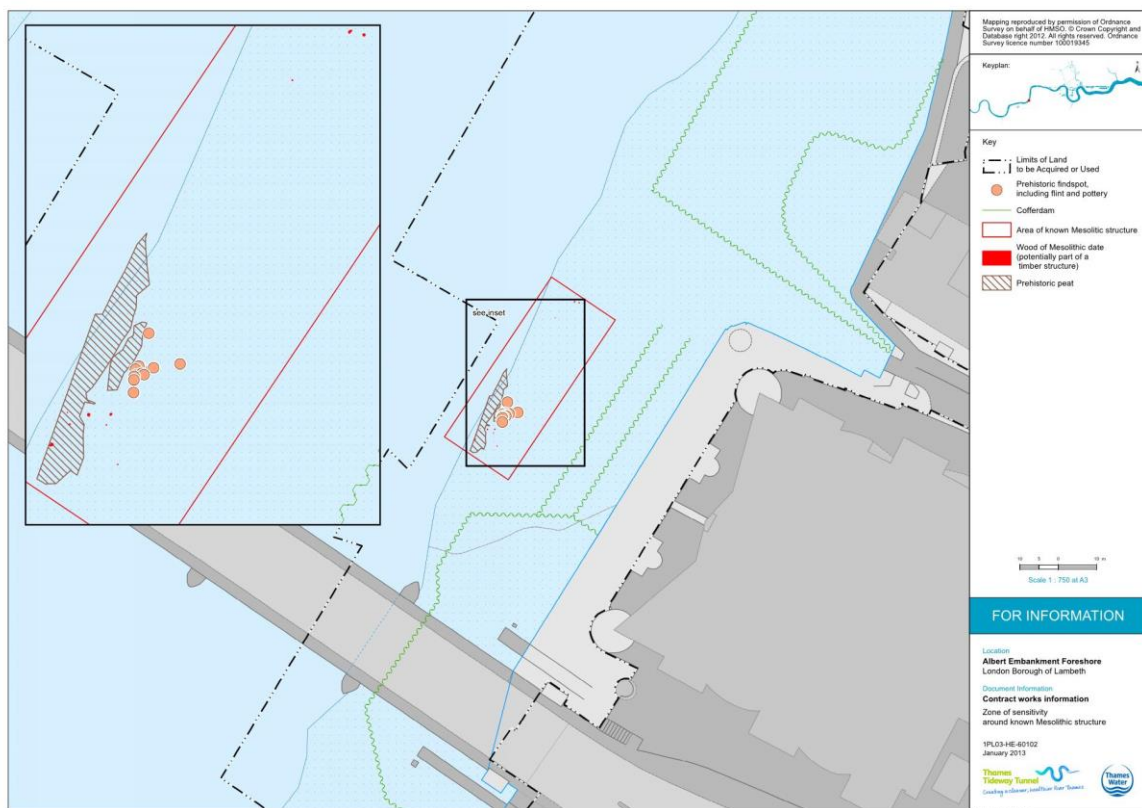
Topic	Site-specific requirement
Other	<p>The contractor's working methods shall limit the risk of vessels striking the listed Vauxhall Bridge.</p> <p>Protection barriers shall be installed as required but</p>

Topic	Site-specific requirement
	<p>not attached to the listed structure unless otherwise agreed with the local authority in consultation with the Historic Buildings and Monuments Commission for England.</p> <p>The contractor shall select suitable operating procedures that do not impact on the known Mesolithic timbers in the foreshore within the zone of sensitivity shown in Figure 13.1 below.</p>

13 Other

Topic	Site-specific requirement
Other	N/A.

Figure 13.1 Known Mesolithic timbers in the foreshore



Copyright notice

Copyright © Thames Water Utilities Limited March 2014.
All rights reserved.

Any plans, drawings, designs and materials (materials) submitted by Thames Water Utilities Limited (Thames Water) as part of this application for Development Consent to the Planning Inspectorate are protected by copyright. You may only use this material (including making copies of it) in order to (a) inspect those plans, drawings, designs and materials at a more convenient time or place; or (b) to facilitate the exercise of a right to participate in the pre-examination or examination stages of the application which is available under the Planning Act 2008 and related regulations. Use for any other purpose is prohibited and further copies must not be made without the prior written consent of Thames Water.

Thames Water Utilities Limited

Clearwater Court, Vastern Road, Reading RG1 8DB

The Thames Water logo and Thames Tideway Tunnel logo are © Thames Water Utilities Limited. All rights reserved.

