



Tideway

# RIVER TIMES

Winter 2018

**BARNES • FULHAM • HAMMERSMITH  
PUTNEY • WANDSWORTH**

**YOUR UPDATE ON LONDON'S NEW SUPER SEWER**



*Pink hard hats raise over  
£3,500 for Breast Cancer Care  
Page 6*



**Tideway**



**MORGAN  
SINDALL**

**Balfour Beatty**

**This is the latest issue of Tideway's community newsletter, produced especially for our neighbours in the western section of the project.**

This newsletter will feature up-to-date news on our events, our progress and many other exciting things happening in your area.

## GET IN TOUCH



**facebook.com/  
TidewayLondon**



**@TidewayLondon**



**08000 30 80 80**



**helpdesk@tideway.london**



**www.tideway.london**



## WELCOME MESSAGE

**Hello and welcome to the latest edition of the River Times, your update on London's new super sewer.**

I am Steve Lousley, the new Delivery Manager for the western section of the Thames Tideway Tunnel, which you can see highlighted in orange on the map opposite.

We are making fantastic progress on our seven sites in the west as we get closer to tunnelling next year.

We successfully reached a major milestone at our Carnwath Road Riverside site in Fulham to get ready to 'launch' our tunnel boring machine – to find out what was involved to make this complex piece of work a success, turn to page 5.

Additionally, we are continuing to work closely with the local community. You'll find a great example of this on page 4: our Hammersmith Pumping Station team helped revamp a garden at a sheltered housing block.

Then on page 7, you can read about Tideway's backing of the charity Hubbub, which has manufactured a 12-seater punt to use on the Thames – made entirely from plastic litter recovered from the river foreshore.

All this plus coverage of our second annual Foreshore Festival along Putney Embankment (page 7); this event was a huge success and is the embodiment of our commitment to 'reconnect London with the River Thames'.

I hope you enjoy this edition of the River Times, and if you have any comments or feedback we'd love to hear from you so please don't hesitate to get in touch!

**Steve Lousley, Delivery Manager**

# ABOUT US

London relies on a 150-year-old sewer system built for a population less than half its current size.

As a result, tens of millions of tonnes of raw sewage overflow the system each year and end up in the River Thames.

## *That's where we come in...*

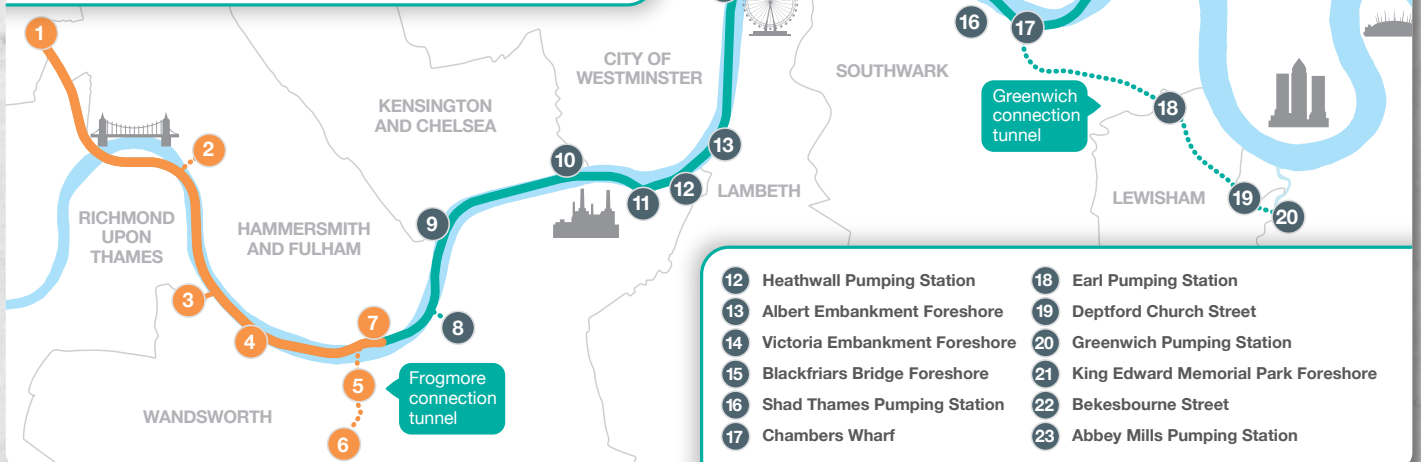
We're building a 25km 'super sewer' under the Thames to intercept those nasty overflows and clean up our river.

The project has also created thousands of new jobs and is building new public space, creating a better environment for Londoners.



## TIDEWAY ROUTE MAP

- |                               |                                 |
|-------------------------------|---------------------------------|
| 1 Acton Storm Tanks           | 7 Carnwath Road Riverside       |
| 2 Hammersmith Pumping Station | 8 Falconbrook Pumping Station   |
| 3 Barn Elms                   | 9 Cremorne Wharf Depot          |
| 4 Putney Embankment Foreshore | 10 Chelsea Embankment Foreshore |
| 5 Dormay Street               | 11 Kirtling Street              |
| 6 King George's Park          |                                 |



- |                                  |  |
|----------------------------------|--|
| 12 Heathwall Pumping Station     | 18 Earl Pumping Station                |
| 13 Albert Embankment Foreshore   | 19 Deptford Church Street              |
| 14 Victoria Embankment Foreshore | 20 Greenwich Pumping Station           |
| 15 Blackfriars Bridge Foreshore  | 21 King Edward Memorial Park Foreshore |
| 16 Shad Thames Pumping Station   | 22 Bekesbourne Street                  |
| 17 Chambers Wharf                | 23 Abbey Mills Pumping Station         |



For more about Tideway's public art strategy, visit [tideway.london/our-community/art-and-heritage/](https://tideway.london/our-community/art-and-heritage/)

# KALEIDOSCOPE ART COMES TO KING GEORGE'S PARK



A piece of art created with the help of local schoolchildren and residents has been unveiled in a Wandsworth park as part of work on London's super sewer.

Through Kaleidoscope Eyes, created by artist Emily Tracy with help from West Hill in the Park Children's Centre, West Hill Primary School and local residents, features on the hoardings around Tideway's construction site at King George's Park in Wandsworth.

The artwork is the result of a series of workshops organised by the artist last year, where participants looked at the park through mirrors and kaleidoscopes, made collages and gathered stories and facts about the area to help create the final piece.

Emily said: "I hope the local community will enjoy re-looking at King George's Park in a different light."

# HAMMERSMITH RESIDENTS GET GARDEN MAKEOVER

Residents of Orchard House benefitted from a garden revamp this summer thanks to the team working at Hammersmith Pumping Station.

The garden at the sheltered housing block run by the Samuel Lewis Trust had become overgrown, but nine members of the team volunteered their time to help restore it to its former glory.

Richie, a resident for more than a decade, said: "This team has been brilliant, they have changed the way this place is. We residents feel like we now have a garden and an outdoor space to use."



## LOCAL NEWS

### CONCRETE BASE SLAB POURED AT CARNWATH ROAD RIVERSIDE

A major milestone was reached in September as the team at Carnwath Road Riverside completed the pouring of the concrete base slab in the shaft.

This is a key piece of work that was necessary before our tunnel boring machines are lowered down the shaft.

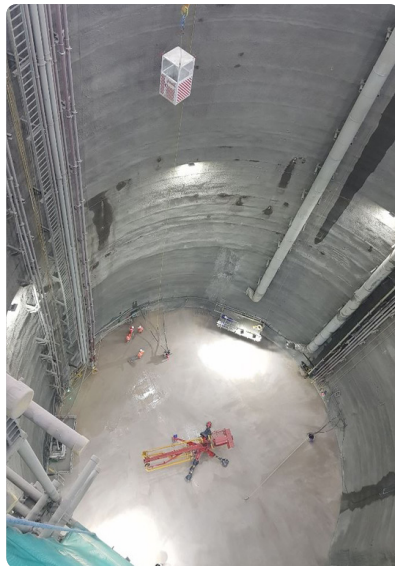
Almost 400 lorries carrying enough concrete to overfill an Olympic-size swimming pool were received on site over a 60-hour period to pour the five-metre deep base slab.

An acoustic enclosure over the shaft ensured local disruption was minimised while the pour was carried out.

Project Director Sally Cox said: “The completion of the base plug pour is a fantastic achievement for the team and a major milestone for the project.

“It was complex piece of work that required hundreds of lorries on site over a period of around two and a half days.

“The team were fantastic in minimising local disturbance and I’d like to thank the local community for their patience while we carried out this vital piece of work.”



### TUNNELLING MACHINE PASSES FACTORY TEST

The tunnel boring machine (TBM) being used to create the Frogmore Connection Tunnel between Wandsworth and Fulham has passed its factory acceptance testing.

Charlotte (named after Suffragette Charlotte Despard) will be used to build the 1.1km tunnel between Tideway’s site at King George’s Park and Carnwath Road Riverside.

At 3.4m in diameter, Charlotte is much smaller than those being used to create the main tunnel.

She is also a refurbished machine, having been used on five previous occasions – the first more than 20 years ago.

Having passed her factory testing, she will be brought to Tideway’s site at Dormay Street in Wandsworth later this year ahead of tunnelling in early 2019.



For news of the construction progress at a site close to you, go to [www.tideway.london/the-tunnel/construction-sites](http://www.tideway.london/the-tunnel/construction-sites)

## NEWS IN BRIEF

### SITE TEAMS GO PINK FOR BREAST CANCER CARE

Project staff have raised an incredible £3,680 for the charity Breast Cancer Care with the sale of 150 pink hard hats. Project Director Sally Cox said: “Breast Cancer affects both men and women at any age and this fantastic organisation could not provide the valuable services it does without the contributions made from fundraising events. The response was tremendous with all our sites getting involved raising money.”

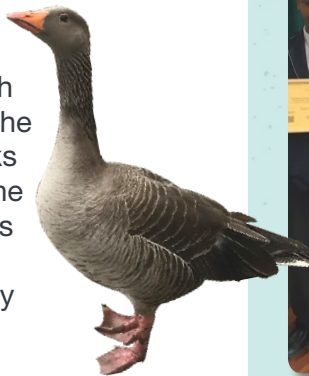


### HYBRID CRANE INSTALLED

A hybrid crane that will limit the project’s carbon footprint and local pollution has been installed at Carnwath Road Riverside. The 240-tonne Liebherr LHM 280 will be used to lift tunnel segments onto site.

### GOURMET TREATS FOR BIRDS AT DORMAY STREET

Tideway’s team at Dormay Street in Wandsworth has set up a feeding station, filled with nutritious pellets of food, for the local Canada geese and ducks that live in the nearby Bell Lane Creek. The device also mimics the sound of ducks, so our feathered friends know exactly when it’s feeding time.



## TIDEWAY NEWS

### FULHAM STUDENTS EARN DEC! QUALIFICATIONS

Ten students from the Hurlingham Academy in Fulham have celebrated achieving their DEC! Level 1 qualifications thanks to a new teacher sponsored by Tideway.

As part of the Class of Your Own ‘Adopt a School’ programme, the team working on the western section of the Tideway Project funded a new DEC! (Design, Engineer, Construct!) teacher for the school in Fulham.

And less than a year later, ten students from years 10 and 11 have passed their Level 1 Qualifications, with seven earning distinctions and three earning merits.

Two students, Seon and Adam (pictured) went on to complete a week’s work experience at Tideway’s Carnwath Road Riverside site in Fulham. Congratulations to all involved!



# BOAT MADE FROM PLASTIC LITTER LAUNCHED

**A 12-seater punt made partly from plastic found on the Thames foreshore and upcycled has been launched in west London.**

The environmental charity Hubbub (with backing from Tideway and Starbucks) was behind the project and built the vessel using Plaswood, recycled plastic collected by Tideway volunteers.

PET Project, as the vessel is known, will be used by schools in London to get students on to the water to collect more plastic and build more boats.

Local and national media gathered on the banks of the Thames in Richmond to witness Dr Thérèse Coffey MP launch the vessel – the second plastic boat launched on the Thames.



Dr Coffey said: “I’m pleased that the first boat, Poly-Mer, has been so successful and I really hope that PET Project has an equally wonderful future.

“I’m grateful to Tideway and Starbucks for supporting this project.”

## FORESHORE FESTIVAL COMES TO PUTNEY

**Hundreds of locals visited Putney Embankment in September to celebrate the River Thames as part of Tideway’s second annual Foreshore Festival.**

Following on from the success of last year’s event, this year’s took place in two locations – Putney and Shadwell Basin.



And despite the rain, hundreds of people turned out to get involved in a range of activities to celebrate the life and times of London’s iconic waterway, the River Thames.

Paddleboarders took part in the ‘Big Ben Challenge’ paddleboarding from Putney to Westminster and back, while guests were treated to talks and presentations from the RNLI, London Youth Rowing, the Museum of London Archaeology and others.

Families also had the opportunity to participate in beach combing sessions, learn about the problem of plastic litter in the Thames and about the Tideway project.

The Foreshore Festival is a free, family day open to all and was run as part of Totally Thames 2018, which saw events hosted all along the Thames throughout September.



For more information about **Totally Thames 2018** and to see pictures from the various events, go to [totallythames.org](http://totallythames.org)

# OPPORTUNITIES

At Tideway, we're always on the lookout for new people to join our team and are committed to recruiting from the boroughs in which we work.

Whether you're looking for work on site or in an office, we regularly have a wide variety of roles to fill, ranging from site operatives to traffic marshals.

If you're interested in working with us, get in touch and lookout for a Tideway jobs fair in your area.

To apply, and for the latest jobs in your area, go to [tideway.london/about-us/jobs](https://www.tideway.london/about-us/jobs)

## MEET THE APPRENTICE

One in 50 of the 4,000 jobs the Tideway project will create will be an apprenticeship.



### NARGIZ KAMALOVA-PAYNE

**Civil Engineer Apprentice**  
Carnwath Road Riverside, Fulham

#### Learned at Tideway

Although I have only been at Tideway for a short amount of time, I have learned so much both in the office and on site. Being able to go on site and see the work happening helps me gain a better understanding of construction. Working in the construction team has allowed me to learn about construction techniques and project management. I have also completed several training courses that improved my knowledge and taught me about the importance of health and safety on site.

#### Enjoyed at Tideway

I have enjoyed being part of such a diverse team and learning different skills and knowledge from everyone around me. Also, being able to go on site regularly and meeting people in the office and on site has been an amazing experience for me.

#### Future aspirations

After my five-year apprenticeship scheme, I am aiming to have completed my bachelor's in civil and infrastructure engineering and then hope to move forward to the professional review for the Incorporated Engineer (IEng) title. In the long-term future, I hope to become a Chartered Engineer (CEng) with the Institute of Civil Engineers.



[facebook.com/TidewayLondon](https://www.facebook.com/TidewayLondon)



[@TidewayLondon](https://twitter.com/TidewayLondon)

For more information about Tideway, our language interpretation service or for Braille and large print:

08000 30 80 80  
[www.tideway.london](https://www.tideway.london)  
[helpdesk@tideway.london](mailto:helpdesk@tideway.london)

