



Tideway

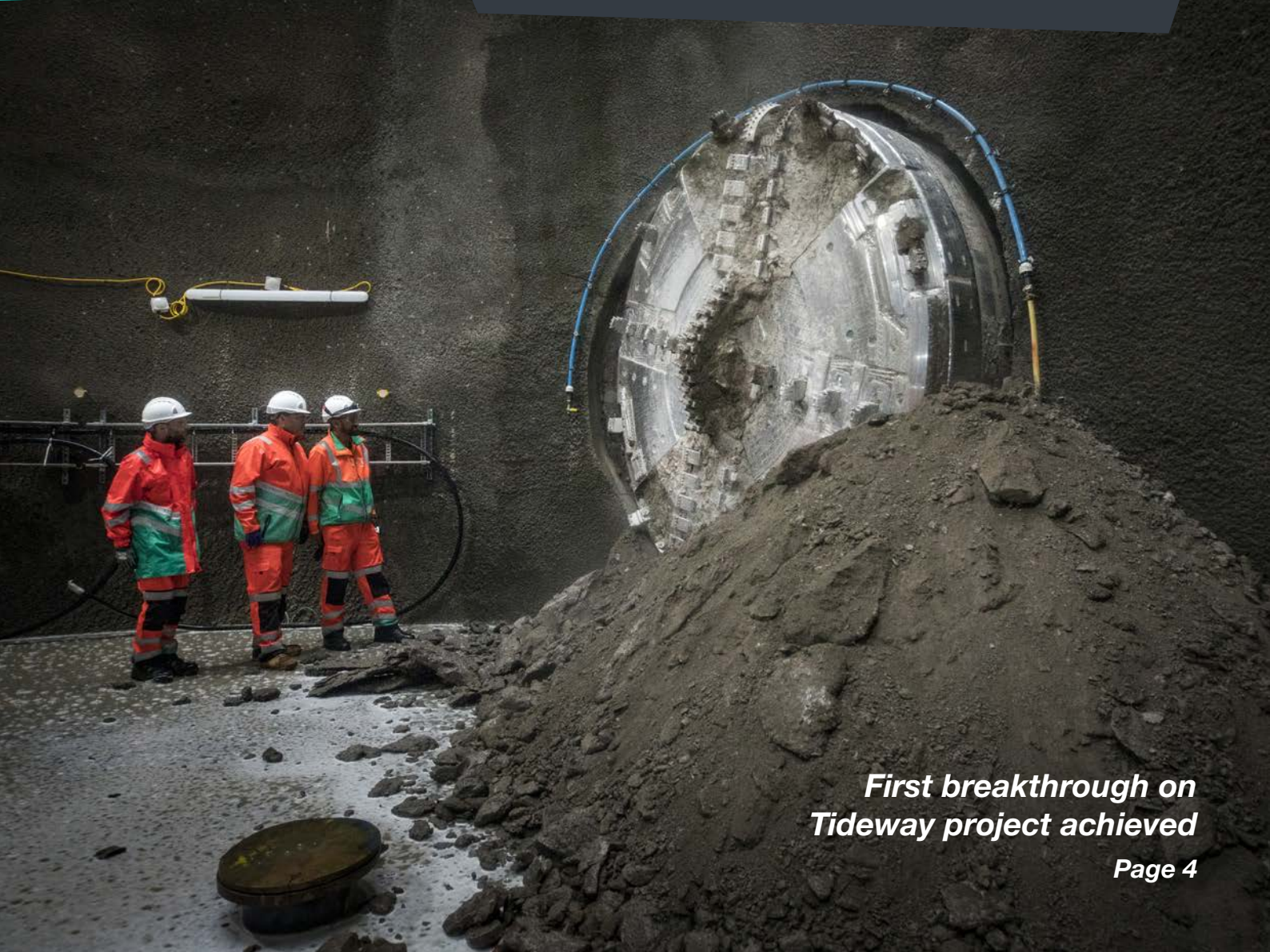


Winter 2019/2020

BARNES • FULHAM • HAMMERSMITH • PUTNEY • WANDSWORTH

RIVER TIMES

YOUR UPDATE ON LONDON'S SUPER SEWER



*First breakthrough on
Tideway project achieved*

Page 4



Tideway



**MORGAN
SINDALL**

Balfour Beatty

This is the latest issue of Tideway's regular community newsletter, produced especially for our neighbours in the west section of the project.

This newsletter will feature up-to-date news on our events, our progress and other exciting things happening in your area.

GET IN TOUCH



08000 30 80 80



helpdesk@tideway.london



www.tideway.london



@TidewayLondon



WELCOME MESSAGE FROM SALLY COX

With 2019 now drawing to a close, it is the ideal opportunity to reflect on the past 12 months and take a look at the significant progress that has been made in the Tideway project.

The big story this edition is our tunnel boring machine (TBM) Charlotte (page 4), which in October became the first machine on the project to 'break through' when she completed the first section of the Frogmore Connection Tunnel. This is a major milestone, and we're delighted to be able to report it.

Elsewhere our main TBM Rachel, which started its tunnelling journey earlier this year, has now completed over 2km of her 7km journey from Fulham to Acton (page 7). Rachel is named after Rachel Parsons, the founding president of the Women's Engineering Society and a former Fulham resident.

We're also very pleased to note that the permanent designs of the proposed Putney Embankment Foreshore (page 4) and King George's Park sites have been approved by the London Borough of Wandsworth. These designs will ensure the development of unique public spaces for the local area.

Our fantastic community support has also continued throughout 2019. The team has undertaken over 3,000 hours supporting community projects and STEM (science, technology, engineering and mathematics) workshops in schools and other groups. You can read more about this on page 6.

If you would like to visit our Carnwath Road Riverside site to find out more about the project, get in touch and we'll be more than happy to arrange a trip. I wish you and your family a very merry Christmas and a happy New Year.

Sally Cox
Project Director

ABOUT US

London relies on a 150-year-old sewer system built for a population less than half its current size.

As a result, tens of millions of tonnes of raw sewage overflow the system each year and end up in the River Thames.

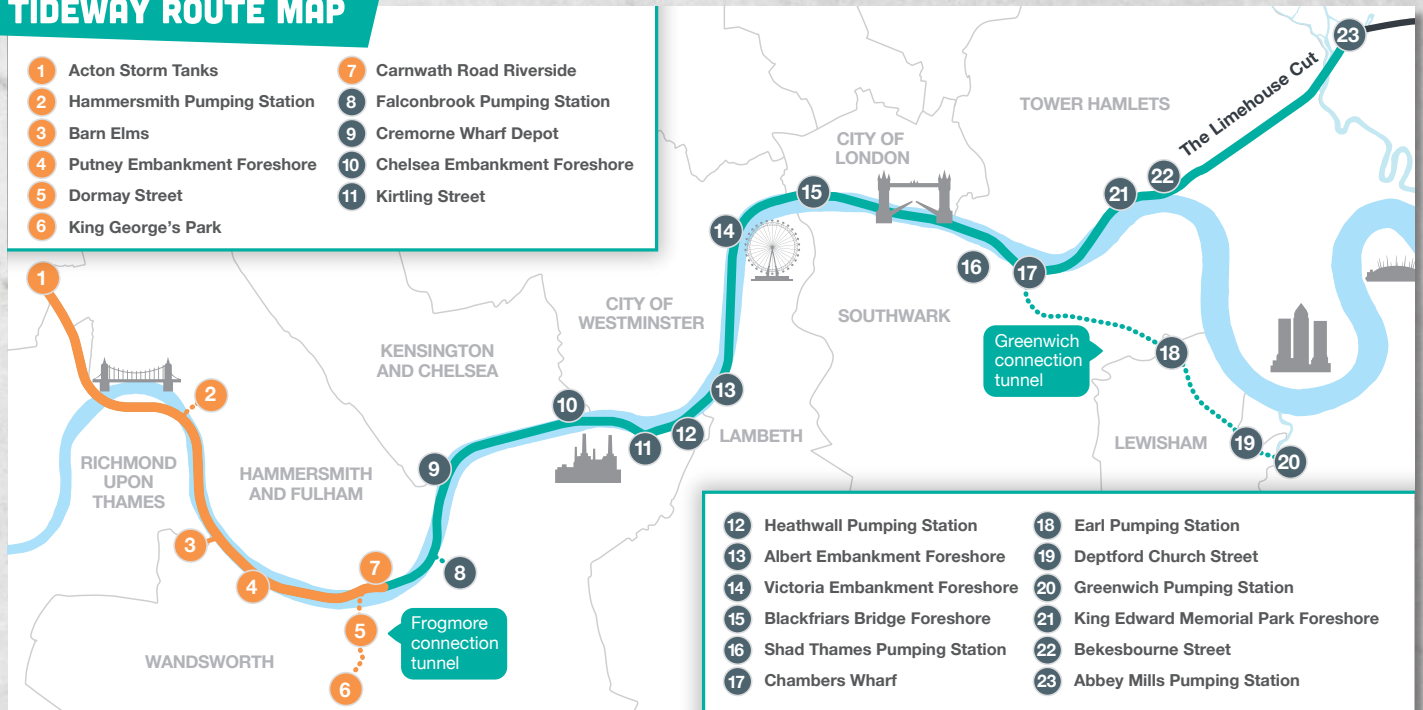
That's where we come in...

We're building a 25km 'super sewer' under the Thames to intercept those nasty spills and clean up our river.

The project will also bring thousands of new jobs, as well as new public space, creating a better environment for Londoners.



TIDEWAY ROUTE MAP





FIRST TUNNELLING MACHINE ON TIDEWAY ‘BREAKS THROUGH’ AT KING GEORGE’S PARK IN WANDSWORTH

Tideway hit a project milestone after Charlotte, the tunnel boring machine (TBM) named after suffragist Charlotte Despard, ‘broke through’ at King George’s Park at the end of October.

Charlotte is tasked with creating a 1.1km tunnel—known as the Frogmore Connection Tunnel—that will connect King George’s Park with the main Tideway sewer at Fulham.

This requires the creation of two tunnels—a 500 metre section from Dormay Street to King George’s Park and a 600 metre section from Dormay Street to Carnwath Road, Fulham. The breakthrough at King George’s Park means that the first of Charlotte’s drives has been completed.



Sally Cox, Project Director for the West section of the project, said: “This breakthrough marks another key step toward a cleaner, healthier River Thames.”

PUTNEY EMBANKMENT DESIGN GETS GREEN LIGHT



Tideway is delighted to announce that the London Borough of Wandsworth has approved plans for the permanent design of the Putney Embankment Foreshore.

Once the Tideway project has been completed the embankment will give residents the opportunity to appreciate a much cleaner River Thames, and will also provide a brand new landmark starting position for The Boat Race.

Tideway will construct seven new landscaped areas as part of the project’s legacy commitments. These will be the first new Thames embankments for around 150 years.

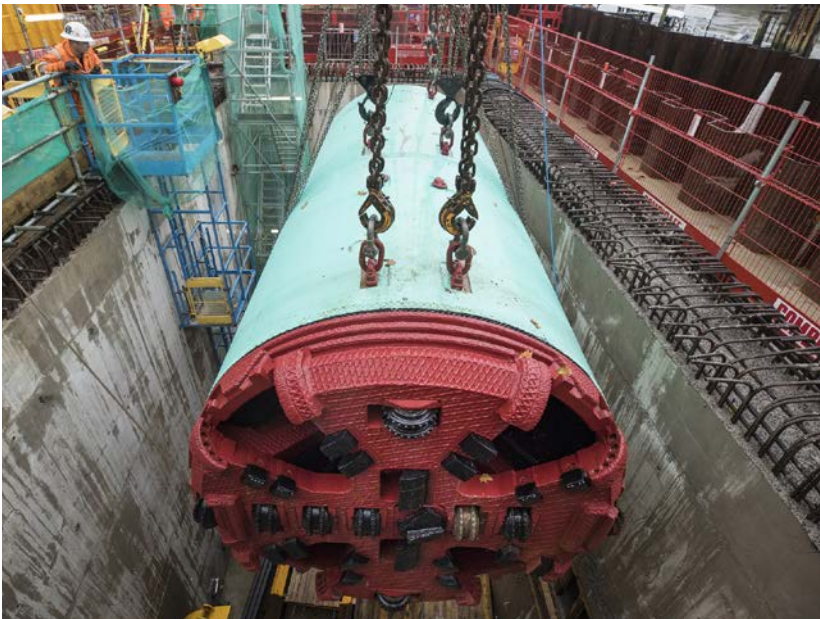
LOCAL NEWS

HUGE UNDERGROUND EXCAVATING MACHINES ARRIVE IN WEST LONDON

Two robotic excavators, known as pipe-jacking machines, have arrived in west London to play a crucial role in the development of the Thames Tideway Tunnel.

The first of these machines is currently located at Barn Elms, while the second recently arrived at Putney. They will create tunnels to link combined sewer overflows—which gather stormwater and rainwater runoff—with the main sewer.

Unlike Tideway's six tunnel boring machines, which are creating the super sewer and its two connection tunnels, these giant machines will be controlled remotely by a team working at ground level.



INTERGENERATIONAL LEARNING SUCCESS

Having received some community investment support from Tideway, children's charity SEAPIA (Sands End Associated Projects in Action) was able to organise a day of intergenerational learning.



Activities were organised to encourage the young and not-so-young to work together on art, knitting and baking projects. Local families and people from nearby sheltered housing came along to lend support and participate.

Intergenerational learning is something SEAPIA has supported for many years, with the charity confident it can help to reduce age stereotyping, improve community cohesion, address isolation in older people, and encourage lifelong learning.

NEWS IN BRIEF



100 YEARS OF FEMALE FELLOWSHIP OF THE GEOLOGICAL SOCIETY

2019 marks 100 years since the admission of the first female geologists as Fellows of the Geological Society.

Founded in 1807, the Geological Society of London is the oldest geological society in the world. However, women were only able to become fellows following an amendment to the society's bylaws in May 1919.



STEM FOR SCOUTS

Generally, STEM (science, technology, engineering and mathematics) sessions are delivered to local schools and colleges. However, our Acton team wanted to do something a little different and so recently visited a nearby Scouts and Beavers group to discuss science, technology, engineering and maths.

One of the challenges involved the children designing and building a paper tower that was capable of supporting a hard-boiled egg for a minimum of five seconds.

TIDEWAY NEWS

HEAD ABOVE WATER SCULPTURE HIGHLIGHTS TIDEWAY'S COMMITMENT TO MENTAL HEALTH INITIATIVES



A large wooden sculpture designed to raise awareness of mental health issues has been erected at Tideway's Northfleet site near Gravesend in Kent.

The artwork is named Head Above Water and was designed by furniture maker and sculptor Stuart Padwick. The sculpture is gender, age and ethnicity neutral, and is intended to stand as a symbol of hope, bravery, compassion and positivity for people who have come through—or are currently confronting—mental health issues.

Speaking after his sculpture was unveiled, Stuart said: "I'm thrilled. I hope Head Above Water continues to promote mental health awareness for many more years to come."

TUNNEL BORING MACHINE RACHEL HITS 2KM TUNNELLING MILESTONE

Rachel, the tunnel boring machine (TBM) digging the west section of the Thames Tideway Tunnel, has completed the first two kilometres of her 7km journey from Fulham to Acton.

The TBM began its journey earlier this year after being lowered 35 metres into the ground at Carnwath Road. Once complete, this section of the tunnel will mark the 'start' and shallowest part of the super sewer.



AHOY! CAMPAIGN ENCOURAGES GREATER AWARENESS OF WATER SAFETY

Tideway's Ahoy! Campaign, designed to inform people about the changing shape of the River Thames and the increased number of barges working on the water, has gone live.

Huge banners now adorn a number of Tideway's locations, while leaflets and posters have also been created to spread the message.

Adam Smith, Tideway Creative Lead, said: "We wanted a message that was big and bold, so keep your eyes open if you're along the river between Putney and Chelsea."



BARN ELMS CHANGING ROOMS ARE NOW OPEN



A brand new fitness studio and accompanying changing rooms have been opened at the sports and leisure complex at Barn Elms opposite Fulham's Craven Cottage stadium.

The new changing rooms are part of Tideway's commitment to work closely with the local communities near its sites.

Bhavini Vyas, Project Manager at Tideway's Barn Elms site, said: "It's wonderful to be able to hand these changing rooms to the local community."

OPPORTUNITIES

At Tideway, we're always on the lookout for new people to join our team and are committed to recruiting from the boroughs in which we work.

Whether you're looking for work on site or in an office, we regularly have a wide variety of roles to fill, ranging from site operatives to communications officers.

If you're interested in working with us, get in touch and lookout for a Tideway jobs fair in your area.

To apply, and for the latest jobs in your area, go to www.tideway.london/careers



MEET THE APPRENTICE



NATHANAEL BROWN

Apprentice Civil Engineer
Carnwath Road Riverside

What have you learned at Tideway?

It's been my first placement since starting my apprenticeship, so almost everything I've learned has been down to the great people that have been mentoring me and have answered my many questions. I've learned how to use a total station, how to set out the conveyors for the tunnel spoil, and I've gained a solid understanding of what's involved with numerous other aspects of the project.

What have you enjoyed about being on Tideway?

The people on the project have been incredibly friendly and supportive which has made me feel like a valued member of the team. Tideway has been a brilliant first project because it's showed me how a construction site should be run. It's given me a good understanding of what happens underground as I continue to pursue a career in tunnelling.

What are your aspirations for the future?

I'd like to continue to specialise in tunnelling but would be open to getting experience from other projects. I'd like to travel to help build infrastructure in underdeveloped countries so that they can have working sewage systems and safe drinking water. I'd like to take the lessons and knowledge gained from working with Tideway to help sites across the globe to operate more efficiently.

For more information about Tideway, our language interpretation service or for Braille and large print:

08000 30 80 80

www.tideway.london

helpdesk@tideway.london



#SuperSewer



@TidewayLondon