

DORMAY STREET & KING GEORGE'S PARK

Community Liaison Working Group
Tuesday 23 November




Tideway





WELCOME

An aerial photograph of London, England, taken at sunset. The River Thames flows through the center of the city, with the iconic Tower Bridge spanning across it. The city skyline is visible in the background, with numerous skyscrapers and buildings. The sky is a mix of orange, yellow, and blue, indicating the time is either dawn or dusk. The water of the river is a calm, golden-brown color. The overall scene is a panoramic view of the city from a high vantage point.

**Our challenge is to build a
new sewer for London to
prevent the frequent pollution
of the river Thames**

**Our vision is to not just clean
up the Thames but to
promote a change in the
relationship between London
and Londoners and their river**

FROGMORE CONNECTION TUNNEL

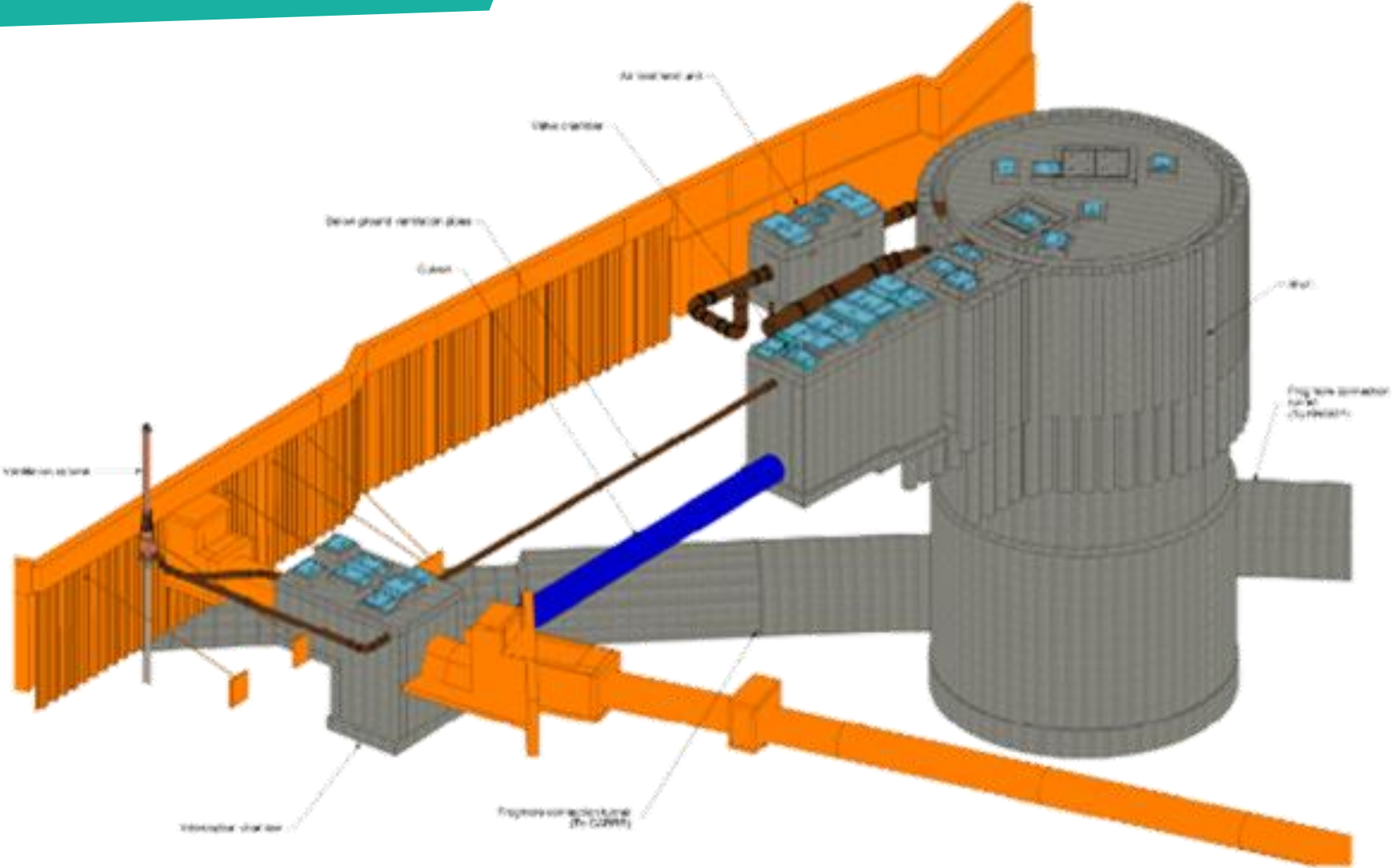
Kevin Dollard, Section Manager

A dark blue trapezoidal graphic with a white border, tilted slightly to the right. It contains the text 'DORMAY STREET' in white, bold, uppercase letters.

**DORMAY
STREET**

Kevin Dollard, Section Manager

Dormay Street 3D Overview



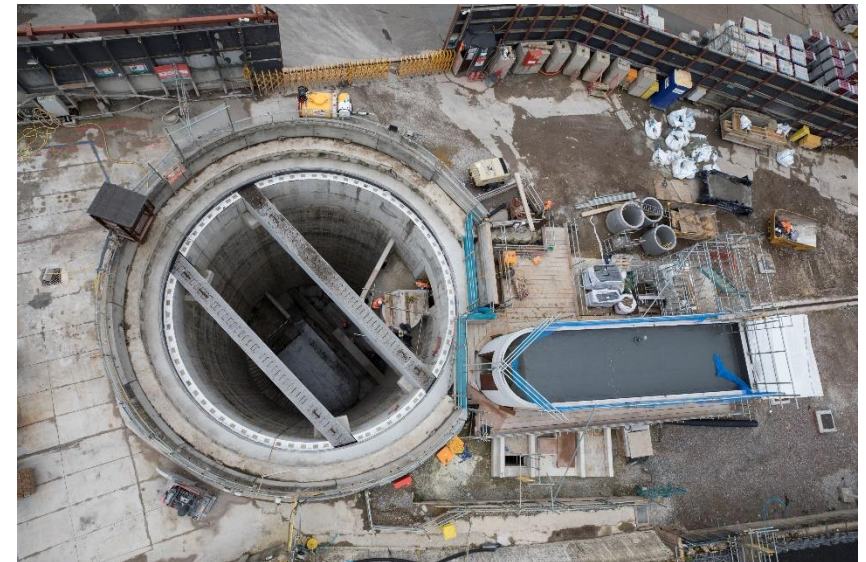
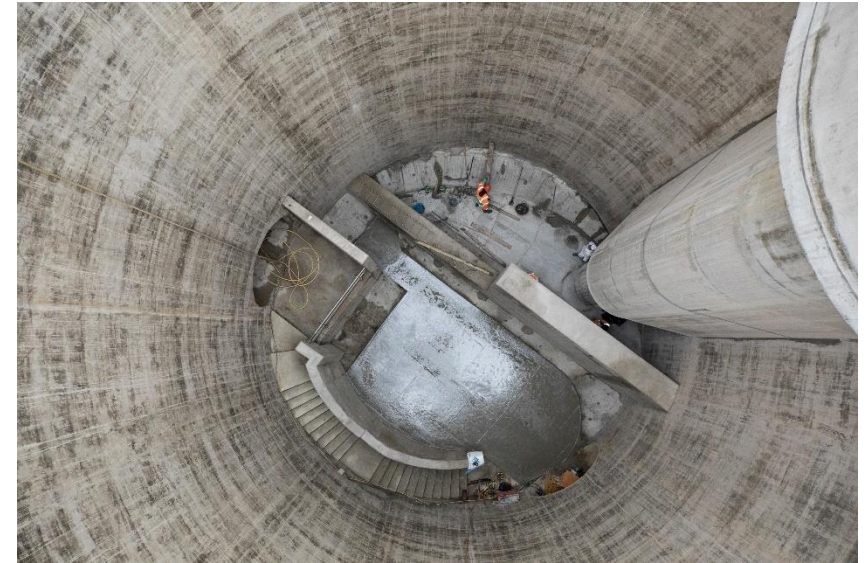
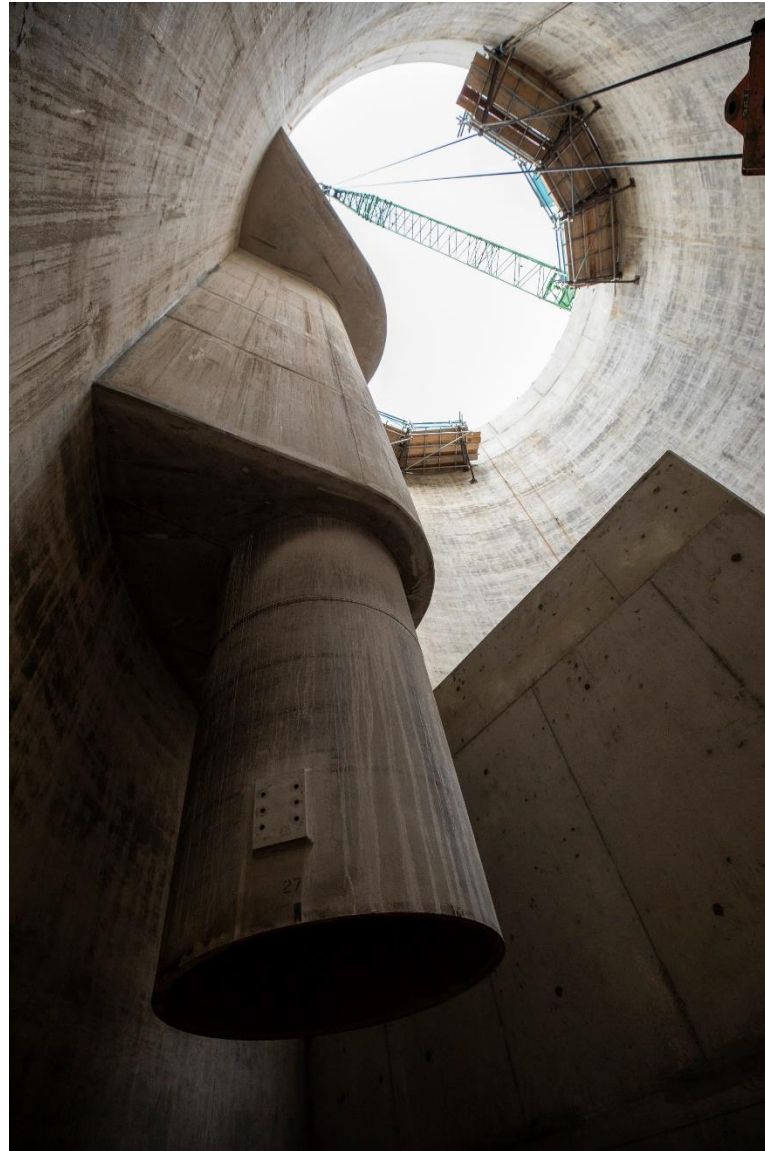
Dormay Street Overview



Works Update: March 2021 – November 2021

Shaft Internals:

- Vortex Tube Surround
- Radial Staircase
- Weir Wall
- Hydraulic Benching
- Precast Beams
- Cover Slab

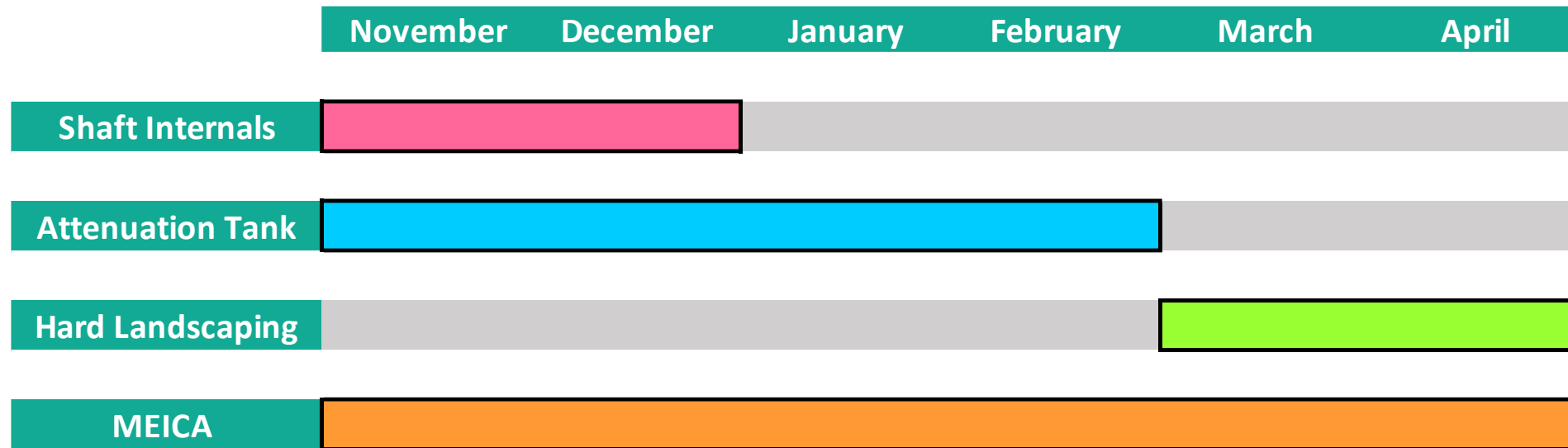


Works Update: July 2021

- Ventilation Kiosk



Look Ahead (next 6 months)



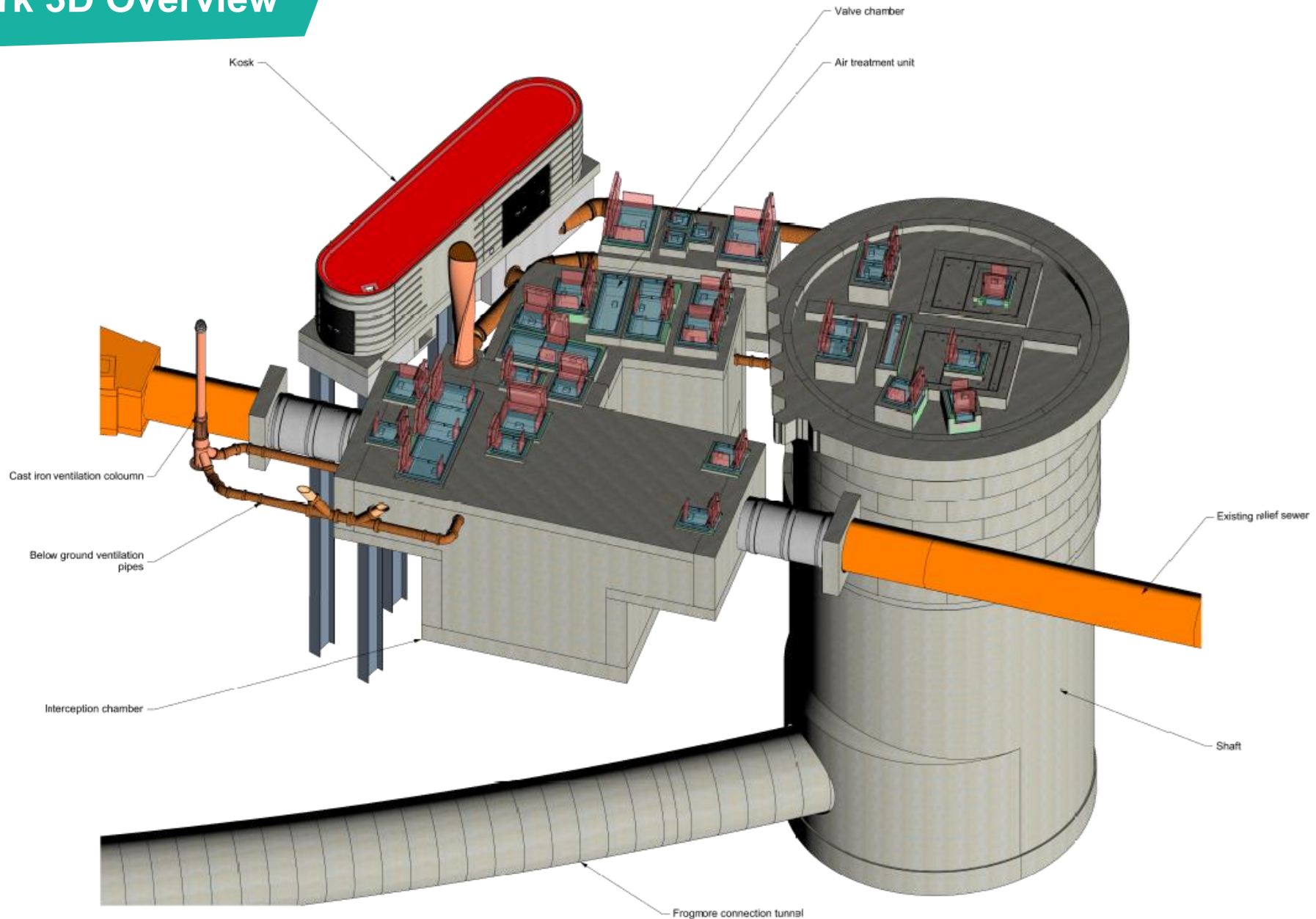
Core working hours 8am-6pm Monday – Friday and 8am-1pm Saturday. One hour start up and shut down periods either side of working hours



**KING
GEORGE'S
PARK**

Kevin Dollard, Section Manager

King George's Park 3D Overview



King George's Park Overview



Works Update: May 2021

- Completed installation of the Precast Kiosk
- Completed installation of Brown Roof on the Kiosk



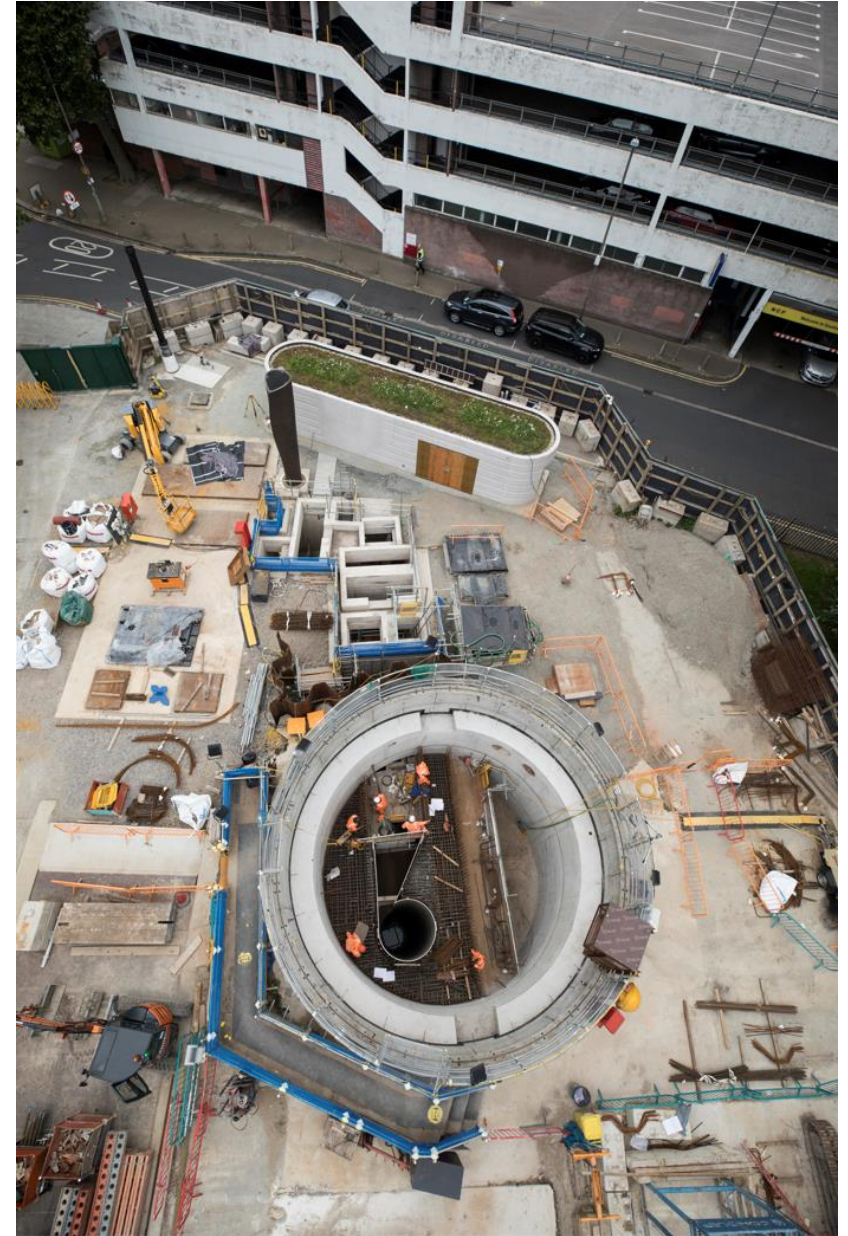
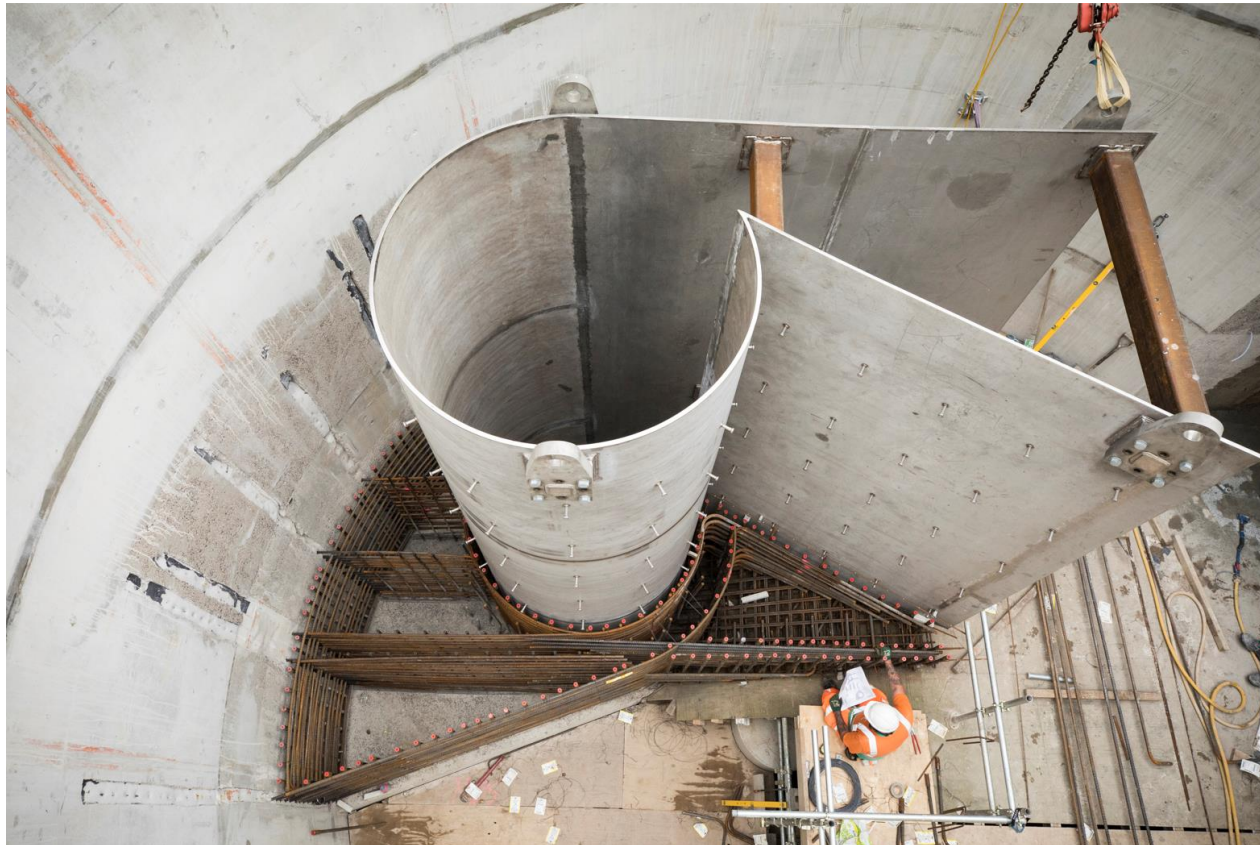
Works Update: May 2021

- Commenced installation of steel for shaft secondary lining



Works Update: June 2021

- Completed installation of the Vortex Generator including concrete encasement and access platform



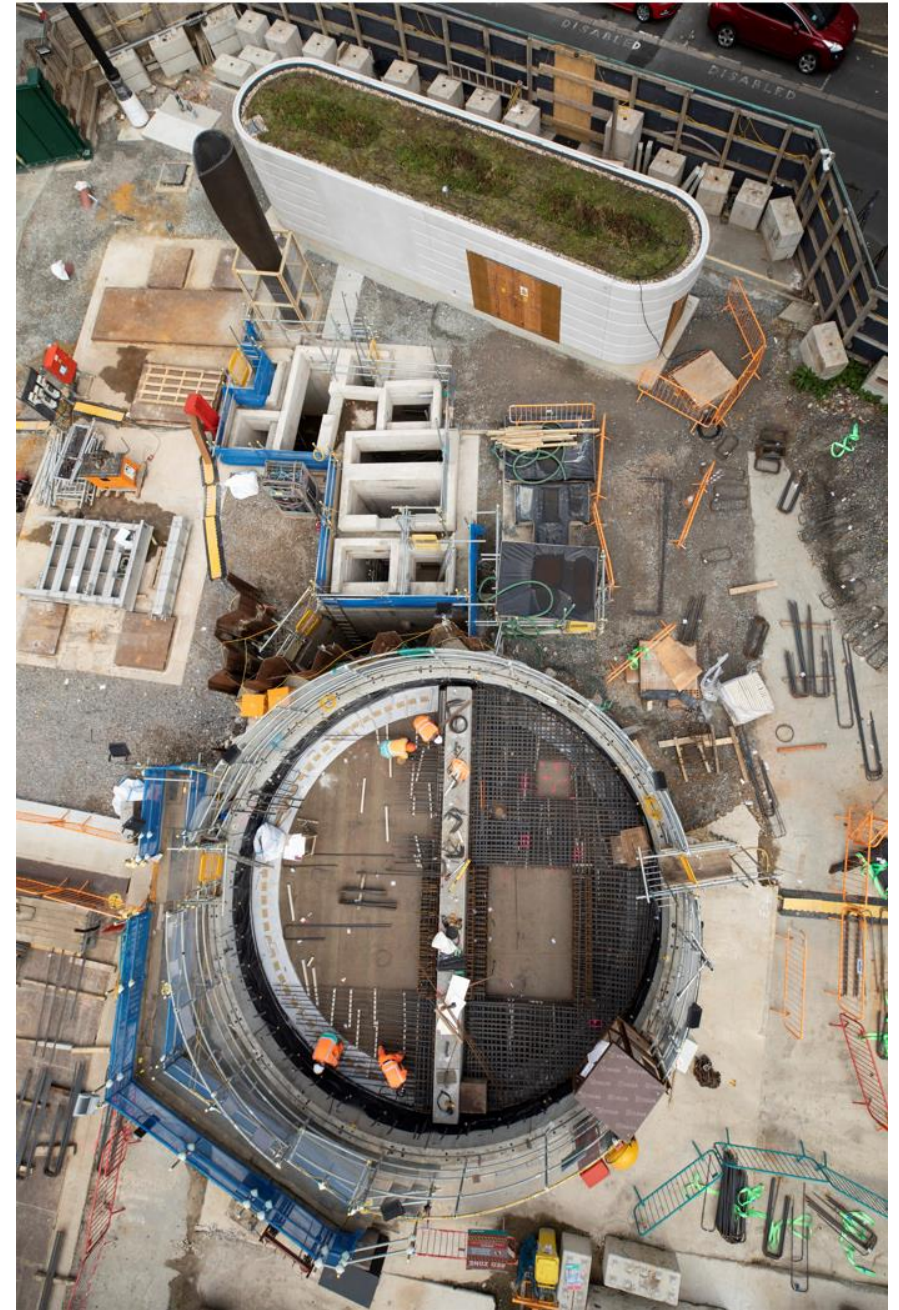
Works Update: July 2021

- Delivery and install of Type A and Type D Columns



Works Update: September 2021

- Delivery and install of Shaft Coverslab
Precast Concrete Support Beam
- Cast Shaft Coverslab and Upstands

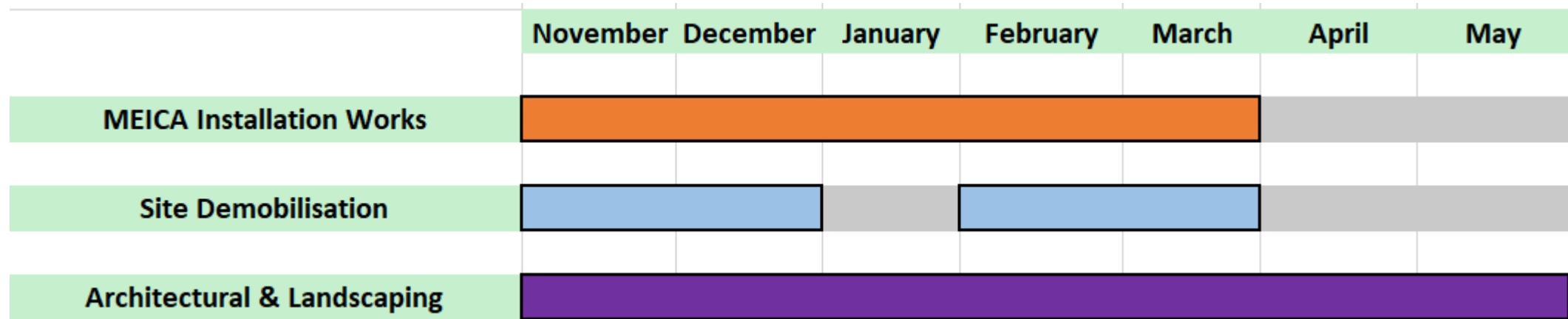


Works Update: November 2021

- Commence with site demobilisation works to the south of site
- Removal of 70T Crane
- Removal of Site Welfare



Look Ahead (next 6 months)



Core working hours 8am-6pm Monday – Friday and 8am-1pm Saturday. One hour start up and shut down periods either side of working hours.

Any working outside of standard working hours will be agreed with the local authority through a Section 61 consent, dispensation or variation and will be communicated to relevant stakeholders.

Landscaping



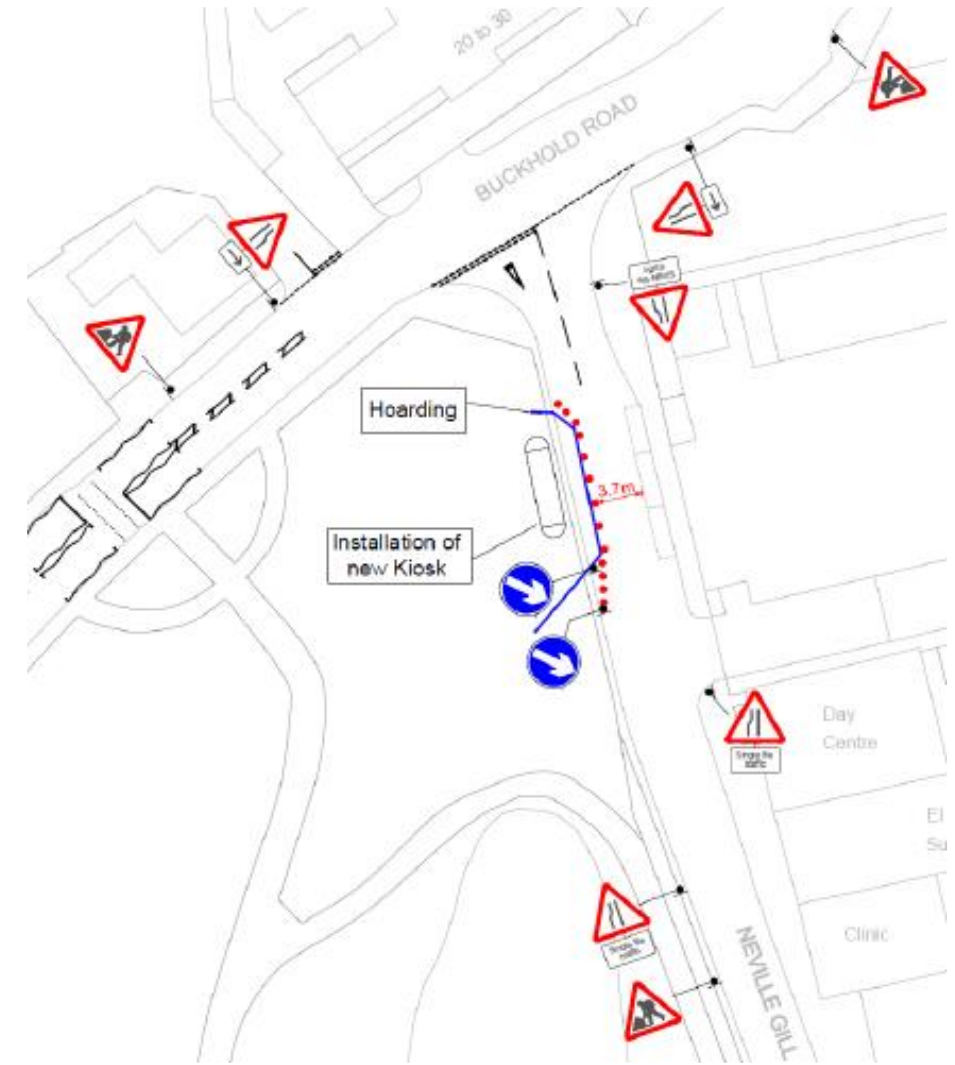
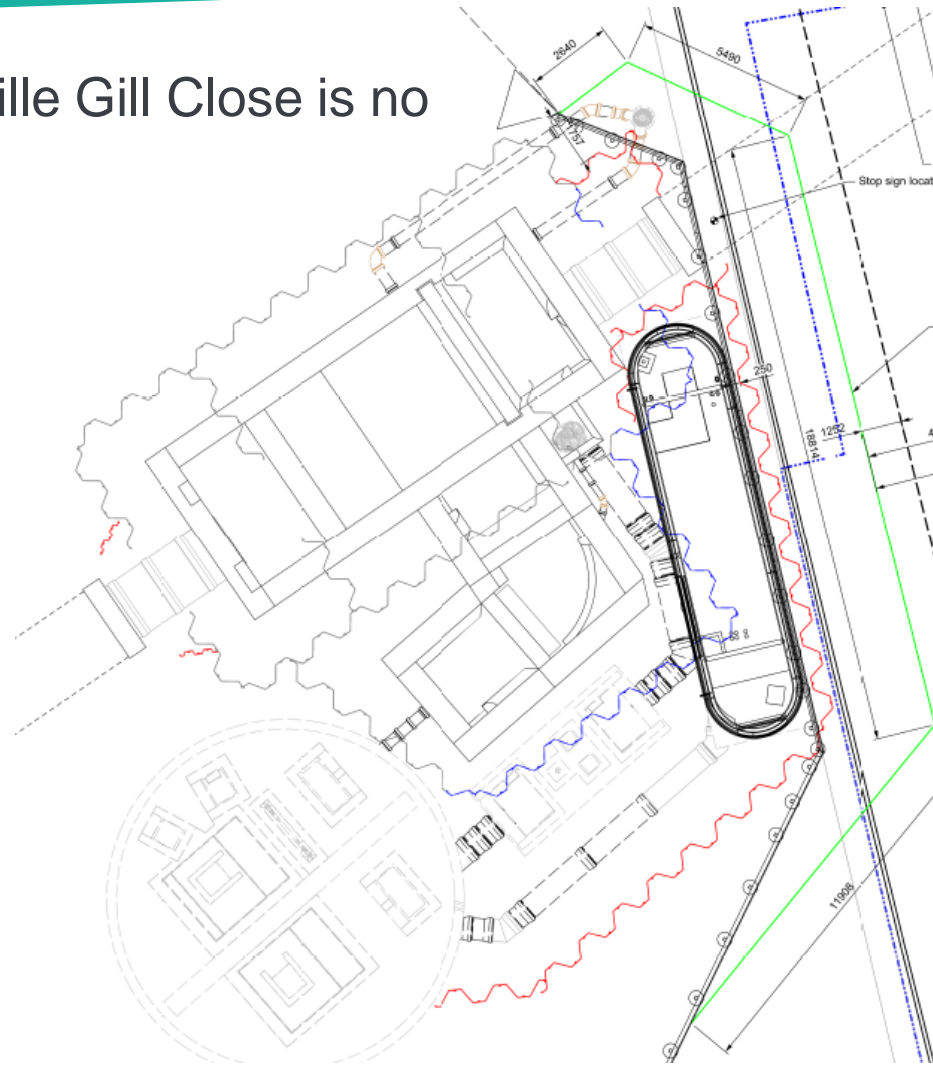
- Design incorporates new public realm area, ventilation column/mechanical and electrical control room and hard/soft landscaping

- Approved by London Borough of Wandsworth on 30 August 2019



Mechanical & Electrical Control Room

- The closure of Neville Gill Close is no longer needed.



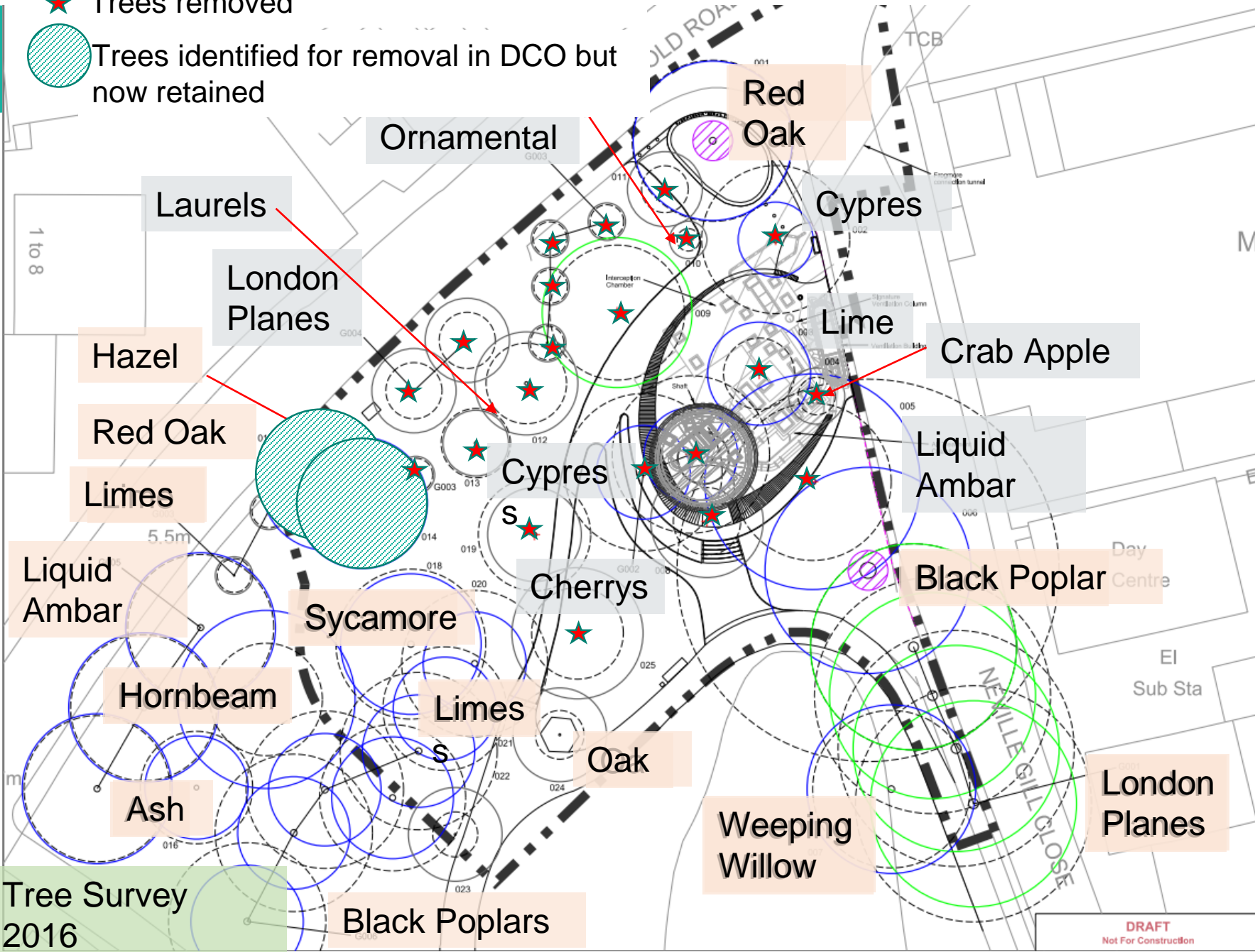
Area required for temporary works installation. Traffic management scheme in place to facilitate the construction of the mechanical and electrical control room.

TREE PLANTING UPDATE

David Cunningham Tideway A&L Lead - West

★ Trees removed

● Trees identified for removal in DCO but now retained

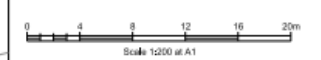


Mapping reproduced by permission of Ordnance Survey on behalf of HMSO. © Crown Copyright and Database right 2016. All rights reserved. Ordnance Survey licence number 100056637

Notes:
1. Tree Categorisation is based on BS 5837:2012 "Trees in Relation to Design, Demolition & Construction".
2. Tree conditions are as observed on
3. For details of assessment refer to 3120-AAJVX-KNGGP-2304-LZ-DR-XXXXXX "xxxxxxxxxxxxx Arboricultural Impact Assessment".

Legend

- 001 ● Category A tree + tree ref.
- 002 ● Category B tree + tree ref.
- 003 ● Category C tree + tree ref.
- 004 ● Category U tree + tree ref.
- Root protection area
- + Tree to be removed during works
- Trees requiring work
- ▭ LLAU-DCO Boundary
- ▭ Tisway works



Not Issued
Checker: P01.1
Approver:
Work in Progress S0

Location
King George's Park
London Borough of Wandsworth
Document Information
AA JV - General Permanent Works
Arboricultural Survey

2016-09-23
3320-AAJVX-KNGGP-590-LZ-DR-000151
Official



Tree Survey 2016

DRAFT
Not For Construction

Tree Planting Amendments

- We have replaced the Ash with Elm. It is not possible to get Ash in the UK anymore commercially and with Ash Dieback Disease due to kill 80% of all Ash trees, it has been decided to substitute with a variety of Elm that is resistant to Dutch Elm Disease.
- The Alder trees in the nursery did not look healthy so it was decided to substitute with *Quercus palustris* (Pin Oak / Swamp Oak).
- The trees selected for the four Liquidambar align the park boundary are a larger tree size measuring 30-35cm rather than 20-25cm.

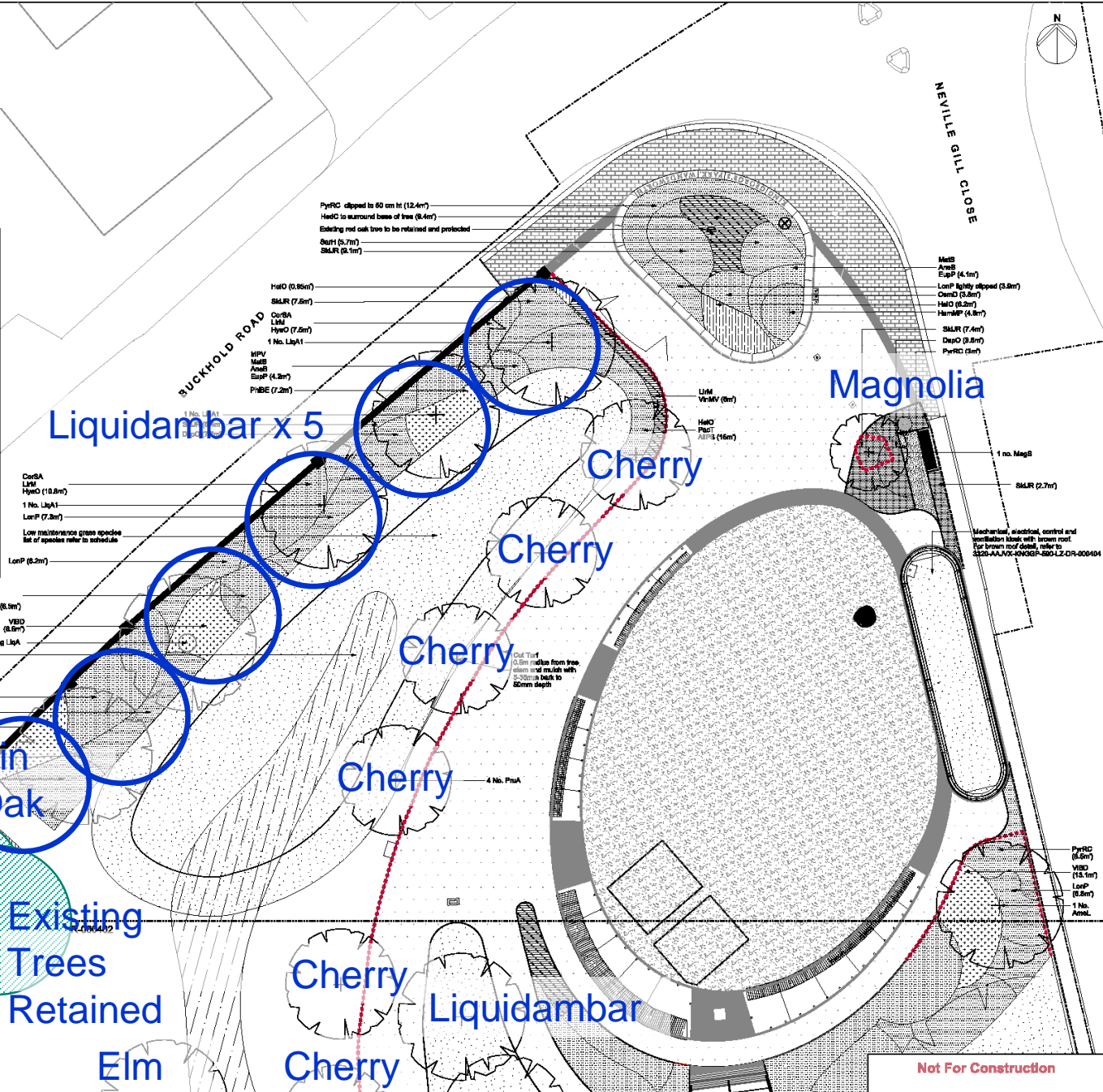
Relevant Health and Environmental Information:
 Notes below are additional to hazards and risks normally associated with this type of work.
 See Current Health and Safety File No: 3320-AAJ/VX-KNGGP-580-LZ-DR-000004 for General Risks referenced below.
Construction:
 Section 2 (Excavations); C1, C1.1, C1.2, C1.3, C1.4, C1.5
 Operation:
 C1.1 Non Identified.
Maintenance:
 1) Periodic major maintenance/repair/replace/interchange with public at site entrance to public park, and in particular the TPO retained large Red Oak tree at that location. Risks of striking overhanging branches of this large retained tree, posing risks to health and safety.
Remediation/Restoration:
 Section 2 (Excavations); D, D1
Note: (1) Always consult SWS Design Risk Register Doc No: 3120-SM&LV-CONTR-2022-ZL-000003 when undertaking future works or planning construction works.
Note: (2) These notes are based on the use of experienced and competent contractors carrying out the work using an approved safe method of working.

Species List
 Refer to Plant Schedule drawing no. 3320-AAJ/VX-KNGGP-580-LZ-DR-000005 for full specification.

Code	Name	Common Name
ALH	<i>Alnus glutinosa</i> Imperialis	Common Alder
LJA	<i>Ulmus glaberrimus</i> ssp. <i>glaberrimus</i>	Small Elm
MAG	<i>Magnolia</i> <i>Suspense</i>	Magnolia
TRC	<i>Trifolium repens</i>	Common Clover
FRF	<i>Fraxinus excelsior</i> 'Aspidulata'	Golden Ash
CUS	<i>Cornus sanguinea</i> 'White Star'	Dogwood
DAW	<i>Daphne genkwa</i>	None
HUS	<i>Hebe x exoniensis</i> 'Parsonsiana'	None
COF	<i>Cornus florida</i>	None
COB	<i>Cornus florida</i>	None
PHB	<i>Philadelphus delawarei</i>	None
PHB	<i>Philadelphus Belle Etoile</i>	Moor Orange
PHL	<i>Phlox paniculata</i> 'Blue Spikes'	None
PHY	<i>Physalis</i> <i>Rubra</i> 'Dunbar'	Flaxweed
SAR	<i>Sarcococca hookeriana</i>	Sweet Box
SKR	<i>Skimmia japonica</i> 'Jubata'	None
VIB	<i>Viburnum x bodinieri</i> 'Dawn'	Viburnum
AMH	<i>Amelanchier laevis</i> 'Amara'	Snow Masole
HAM	<i>Hamelia</i> <i>fruticosa</i> 'Palida'	White Hazel
EGR	<i>Egretia</i> <i>polystachya</i>	Swage
HED	<i>Hedera helix</i> 'Green Goddess'	Parthenoclimber
HEL	<i>Helioscopia</i> <i>orientalis</i>	Leather Blossom
HMF	<i>Hemerocallis</i> <i>fulva</i> 'Major'	Lily Lily
HYD	<i>Hydrangea</i> <i>virginiana</i>	Vanilla Hydrangea
KIN	<i>Kingfisher</i> <i>rostrata</i>	Red Hot Poker
LIM	<i>Limonium</i> <i>maritimum</i>	Sea Lily
TAJ	<i>Thalictrum flavum</i>	Japanese Spigade
PRM	<i>Primula</i> <i>sp.</i>	Primrose
VIN	<i>Vincetoxicum</i> <i>vitifolium</i>	Wormwood
ALM	<i>Alumina</i> <i>maritima</i> 'var. <i>Sensation</i>	Wedge Ailanthus
ANB	<i>Anemone</i> <i>blanda</i>	Wood Anemone
GAE	<i>Gaillardia</i> <i>maritima</i>	Scarlet Gaiard
HYD	<i>Hydrangea</i> <i>paniculata</i> 'Lacecap'	Hydrangea
NAR	<i>Narcissus</i> <i>bulbiferus</i>	Norfolk Daffodil
MAS	<i>Mammillaria</i> <i>schubertiana</i>	Shrubcactus

Naturalised Planting (100m²)
 Planting in grass
 H&P
 (overlain with A22 low maintenance grass species)
 LoP (10.0m)
 Root barrier to be installed along the length of proposed wall between existing and new within park.
 Existing LoP
 PIBE (8m)
 DepO (10.0m)
 Existing electrical cabinet to be relocated here, adjacent to the boundary fence.
 VIBO (7.5m)
 H&D (8.0m)
 B&UP (5.0m)
 O&D (8.0m)
 1 No. Abn

Matchline for C...



Mapping reproduced by permission of Ordnance Survey on behalf of HMSO. © Crown Copyright and Database right 2017. All rights reserved. Ordnance Survey licence number 100056637

Coordinates are to Ordnance Survey Datum OSGB36. All levels are in metres and relate to the tunnel datum which is 100 metres below Ordnance Datum Newlyn.

Key:

- Limits of land to be acquired or used (LLAU)
- Root barrier (ReRoot 2000 Vertical)
- Access covers with key to match resin bound gravel
- Excising trees within surveyed area to be retained and protected
- Proposed semi-retain trees
- Stump Planting
- Grass seeding
- Mix Planting - Bulb Herbaceous/ Shrub
- Ground Cover Planting
- Deciduous Planting
- Herbaceous Planting
- Asphalt
- Asphalt concrete (coloured)
- Naturalised Planting

Notes:

- This drawing should be read in conjunction with the following plans and details:
 General Notes found on drawing number 3320-AAJ/VX-KNGGP-580-LZ-DR-000004
 Hard landscaping plans 3320-AAJ/VX-KNGGP-580-LZ-DR-000001-302
 Landscaping ground arrangement plan 3320-AAJ/VX-KNGGP-580-LZ-DR-000001
 Soft landscaping plans and details 3320-AAJ/VX-KNGGP-580-LZ-DR-000401-405
 Street road details 3320-AAJ/VX-KNGGP-580-LZ-DR-000404
 Architecture plans and details 3320-AAJ/VX-KNGGP-580-LZ-DR-000001-10
- This drawing should be read in conjunction with the following architecture and landscape specification 3120-AAJ/VX-KNGGP-230-AZ-SP-000001
 3120-AAJ/VX-KNGGP-230-LZ-SP-000001
- This drawing should be read in conjunction with the Civil engineer specifications 3120-SM&LV-TTWEEST-240-ZZ-SP-000001

Scale 1:100 at A1

Rev	Date	Issue History
PO2	2017-07-20	Issue 2 Submission
PO3	2018-08-02	Issue 4 Resubmission incorporating M&I&A Gate 4
PO4	2018-12-18	Issue 5 Resubmission Addressing Townley Comments
PO5	2019-10-11	Issue 6 Submission
PO6	2021-07-29	Issue 6 Resubmission

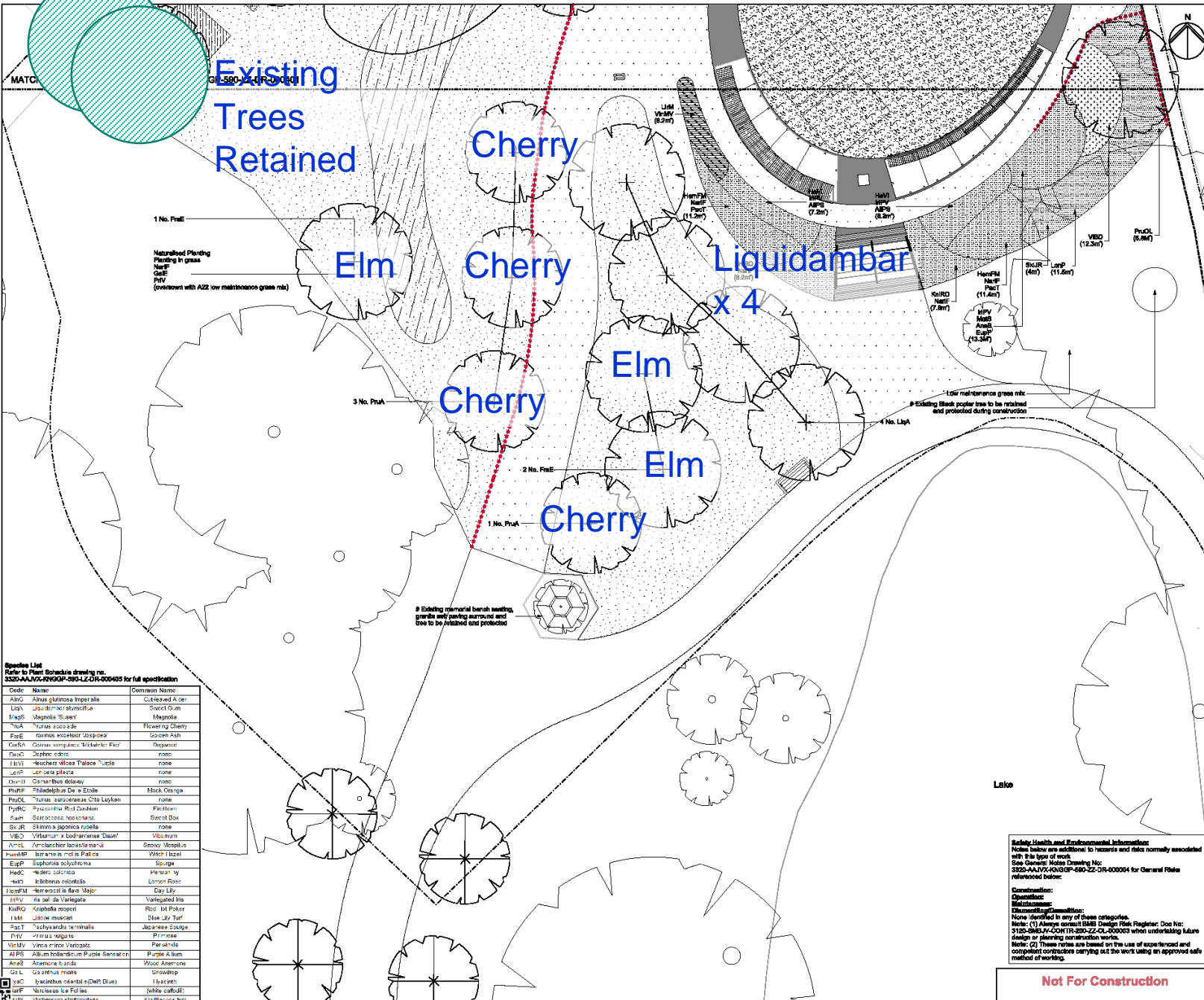
Responses to CABE S&LV COO-AAJ/VX-01237

Checker: THEA
 Approver: JWGO
 Suitable for Stage Approval: S4

Location
 King George's Park
 London Borough of Wandsworth
 Document Information
 AA JV - General Permanent Works
 Soft Landscape Plan
 Sheet 1 of 2

2021-07-29
 3320-AAJ/VX-KNGGP-580-LZ-DR-000401
 Official





Mapping reproduced by permission of Ordnance Survey on behalf of HMSO. © Crown Copyright and Database right 2017. All rights reserved. Ordnance Survey licence number 100066537

Coordinates are to Ordnance Survey Datum OSG836. All levels are in metres and relate to the tunnel datum which is 100 metres below Ordnance Datum Newlyn.

Key:

- Limits of land to be acquired or used (LLAU)
- Root barrier (Rt/Root 2000 Vertical)
- Access covers with lorry to match near bound gravel
- Proposed semi-mature trees
- Strub Planting
- Mix Planting - Bulb/Herbaceous/Strub
- Daisycous Planting
- Asphalt
- Naturalised Planting
- Existing trees within reserved area to be retained and protected
- Advanced tree planting
- Grass seeding
- Ground Cover Planting
- Herbaceous Planting
- Asphalt concrete (coloured)

- Notes:**
- This drawing should be read in conjunction with the following plans and details:
 - General Notes based on drawing number: 3320-AAJVX-KNGGP-590-LZ-DR-000004
 - Head landscape plans: 3320-AAJVX-KNGGP-590-LZ-DR-000001-302
 - Landscape general arrangement plan: 3320-AAJVX-KNGGP-590-LZ-DR-000001
 - Soil, landscape plans and details: 3320-AAJVX-KNGGP-590-LZ-DR-000041-405
 - Ground roof details: 3320-AAJVX-KNGGP-590-LZ-DR-000040
 - Asphalt plans and details: 3320-AAJVX-KNGGP-590-AZ-DR-000001-10
 - This drawing should be read in conjunction with the following:
 - Architecture and Landscape Specification: 3320-AAJVX-KNGGP-230-AZ-EP-000001
 - 3320-AAJVX-KNGGP-230-LZ-EP-000001
 - This drawing should be read in conjunction with the Civil engineer specification: 3320-SMBV-TWEST-240-ZZ-EP-000001



Species List
Refer to Plant Schedule drawing no. 3320-AAJVX-KNGGP-590-LZ-DR-000405 for full specification

Code	Name	Common Name
ANC	<i>Rhus glabra</i> Imperialis	Chinese Ager
LQA	<i>Liriodendron styraciflua</i>	Sweet Gum
MAGS	<i>Magnolia 'Susan'</i>	Magnolia
FLA	<i>Prunus avocata</i>	Flowering Cherry
FRUE	<i>Fraxinus excelsior</i> 'asporea'	Spice Ash
GRSA	<i>Quercus agrifolia</i> 'Wilkesii'	Redoak
PRUC	<i>Prunus coccinea</i>	none
LEVI	<i>Leucis villosa</i> 'Palace Turle'	none
LEPI	<i>Leucis plicata</i>	none
ORHI	<i>Ornithoglossum</i>	none
PHUR	<i>Philadelphus De S' Etoile</i>	Abdo. Orange
PRUL	<i>Prunus sargentana</i> Otto Luyken	none
FRRC	<i>Fraxinus</i> Red Dutchman	Fraxinus
GRAM	<i>Quercus robur</i> 'coccinea'	Sweet Oak
GRJR	<i>Quercus agrifolia</i> 'coccinea'	none
VED	<i>Viburnum x bodinense</i> 'Dawn'	Viburnum
AMCL	<i>Amelanchier laevis</i> 'maria'	Snowy Mesquite
PURMP	<i>Prunella rotundifolia</i>	White Hazel
ESPI	<i>Euphorbia poliflora</i>	Sourgrass
HEAC	<i>Hedera coccinea</i>	Waxleaf Ivy
HELO	<i>Helleborus orientalis</i>	London Rose
LEAFM	<i>Lonicera flava</i> 'Major'	Day Lily
LEPI	<i>Leucis plicata</i>	Waxleaf Ivy
KURRO	<i>Koeleria scouleri</i>	Rice Cut Flower
LEMI	<i>Leucis muscari</i>	Blue Lily Turf
PRCT	<i>Prunella terinialis</i>	Japanese Spurge
PRIME	<i>Prunella</i>	Prunella
VERMV	<i>Viburnum plicatum</i>	Pinkholme
ALPS	<i>Allium hollandicum</i> Purple Sensation	Purple Allium
ARAB	<i>Artemisia sarda</i>	Wood Asterone
GRAL	<i>Quercus robur</i>	Sweet Oak
GRAC	<i>Quercus agrifolia</i> (Deli Blue)	Hollyhock
TRIF	<i>Trifolium</i>	(white catfoot)
GRIS	<i>Grass</i>	Strawberry

Reliability, Health and Environmental Information
Notes below are additional to records and files normally associated with this type of work.
See General Notes Drawing No: 3320-AAJVX-KNGGP-590-LZ-DR-000004 for General Notes referenced below.
Classification:
Material Name:
Material Description:
None identified in any of these categories.
Note: (1) Always consult BS6187 Design Risk Register; Use No: 3320-SMBV-CONTR-230-ZZ-CL-000003 when undertaking future design or planning construction works.
Note: (2) These notes are based on the use of experienced and competent contractors carrying out the work using an approved safe method of working.

Not For Construction

Checker: THEA
Approver: JWOO

P06

Suitable for Stage Approval S4

Location
King George's Park
London Borough of Wandsworth
Document Information
AA JV - General Permanent Works
Soft Landscape Plan
Sheet 2 of 2

2021-07-29
3320-AAJVX-KNGGP-590-LZ-DR-000402
Official



Previous Tree Schedule

TREES												
Code	Name	Common Name	Qty	Form	Age/ no. of times transplanted	Supply Height (cm)	Girth (cm)	Clear Stem (cm)	Form	Minimum no. of breaks/branches	Root condition	Notes
AlnG	Alnus glutinosa Imperialis	Cut-leaved Alder	1	Standard (Extra Heavy)	3x	700+	50+	200	Specimen	5	RB	
FraE	Fraxinus excelsior 'Jaspidea'	Golden Ash	3	Standard (Heavy)	2x	500-700	30-35	200	Semi-mature	5	RB	
LiqA1	Liquidamber styraciflua	Sweet Gum	3	Standard (Extra Heavy)	3x	700+	50+	200	Specimen	5	RB	
LiqA2	Liquidamber styraciflua	Sweet Gum	4	Standard (Selected)	2x	500-700	30-35	200	Semi-mature	4	RB	
PruA	Prunus accolade	Flowering Cherry	8	Standard (Selected)	2x	500-700	30-35	200	Semi-mature	4	B	

New Tree Schedule

Site	Species	Common Name	Height	Girth	Clear Stem	Root	Qty
QueP	Quercus palustris	Pin Oak	700	45-50cm	200cm	RB	1
UlmN	Ulmus 'New Horizon'	Elm	500-700	20-25cm	200cm	RB	3
LiqA	Liquidamba styraciflua	Liquidamber	700+	45-50cm	200cm	RB	3
LiqA	Liquidamba styraciflua	Liquidamber	500-700	30-35cm	200cm	RB	4
PruA	Prunus Accolade	Cherry	500-700	20-25cm	200cm	RB	8



**COMMUNITY
ENGAGEMENT**

Katie Ashton, Communications Manager

Community Engagement

- 6 noise and vibration complaints and 14 general enquires received since the last meeting for both Dormay Street and King George's Park
- 6 project information sheets have been issued since the last meeting:
 - 3 x abnormal loads
 - 1 x cabin removal
 - 1 x engagement event
 - 1 x large concrete pour

All enquiries have been responded to within 24 hours (where possible)



Call: 08000 30 80 80
Email: helpdesk@tideway.london
Write to: Freepost TIDEWAY

How To Make A Claim if Affected By Tideway's Work

Who do I go to for advice?

Independent Advisory Service (IAS) Helpline for independent advice:

- 0800 917 8845 or info@tidewayias.co.uk
- Tideway's Compensation & Mitigation Lead, Louise Walsh, for personal assistance and advice
 - Helpdesk: 08000 30 80 80 / helpdesk@tideway.london or
 - Direct: 07971 077165 / louise.walsh@tideway.london

How do I submit my claim?

Louise can submit your claim to the Independent Compensation Panel (ICP) on your behalf, or you can submit your claim direct to the ICP: admin@tidewayicp.london

The IAS can send you a claim form, or you can download the form off the Tideway website: www.tideway.london/help-advice/compensation-information/Independent-Compensation-Panel

Community Engagement

- Our community investment and engagement activities are continuing when we are able to undertake them safely.
- Please contact us if you are aware of an opportunity or community group that we could support.



How To Stay Up To Date

Follow us on social media:
@TidewayLondon



en-gb.facebook.com/TidewayLondon/



www.instagram.com/tidewaylondon/



www.linkedin.com/company/tideway-london/



twitter.com/TidewayLondon

vimeo

Vimeo.com/tideway

If you would like to be added to our mailing list for works updates/notifications, email helpdesk@Tideway.London

QUESTIONS?



Tideway

RECONNECTING LONDON WITH THE RIVER THAMES

#SuperSewer

www.tideway.london