



Tideway

# RIVER TIMES

YOUR UPDATE ON LONDON'S SUPER SEWER



*Deptford urban wildlife charity  
gets funding boost from Tideway*





Tideway



GRANDS PROJETS



This is the latest issue of Tideway's regular community newsletter, produced especially for our neighbours in the east section of the project.

This newsletter will feature up-to-date news on our events, our progress and other exciting things happening in your area.

### GET IN TOUCH

08000 30 80 80

helpdesk@tideway.london

www.tideway.london

@TidewayLondon



## WELCOME MESSAGE FROM JIM AVANT

Welcome to the latest edition of the River Times, your update on London's super sewer. Work on this vital infrastructure is now around 68 per cent complete, with the tunnel due to be operational in 2025.

On the eastern section of the project, tunnel boring machine (TBM) 'Selina' is currently under the Thames, constructing the final section of the super sewer that runs between Bermondsey and Abbey Mills Pumping Station. You can read more about her progress, and her transit of the world's oldest sub-river tunnel, on page 6.

At the same time, TBM 'Annie' is digging a connection tunnel into our main tunnel. She has already completed around a quarter of her 4.5km journey from Greenwich Pumping Station to Bermondsey, after launching late last year (read an update on page 4).

We're committed on this project to using the river as much as possible to move our construction material as well as excavated tunnelling spoil – and this is no different at Greenwich, where barges are now utilising Deptford Creek (also known as the River Ravensbourne) to remove spoil from the site.

Likewise, on page 5, you can read about the mammoth manoeuvre of TBM Ursula – lifted from our site in Bermondsey by a giant floating crane.

Finally, we have released an exciting new film showcasing some of the artists working on art commissions as part of our project for the first time. Tideway's most visible above-ground legacy will be our new land – and our art. This new film offers the first detailed look at some of the commissions. Turn to page 7 for more.

Jim Avant  
Delivery Manager

## ABOUT US

London relies on a 150-year-old sewer system built for a population less than half its current size.

As a result, tens of millions of tonnes of raw sewage overflow the system each year and end up in the River Thames.

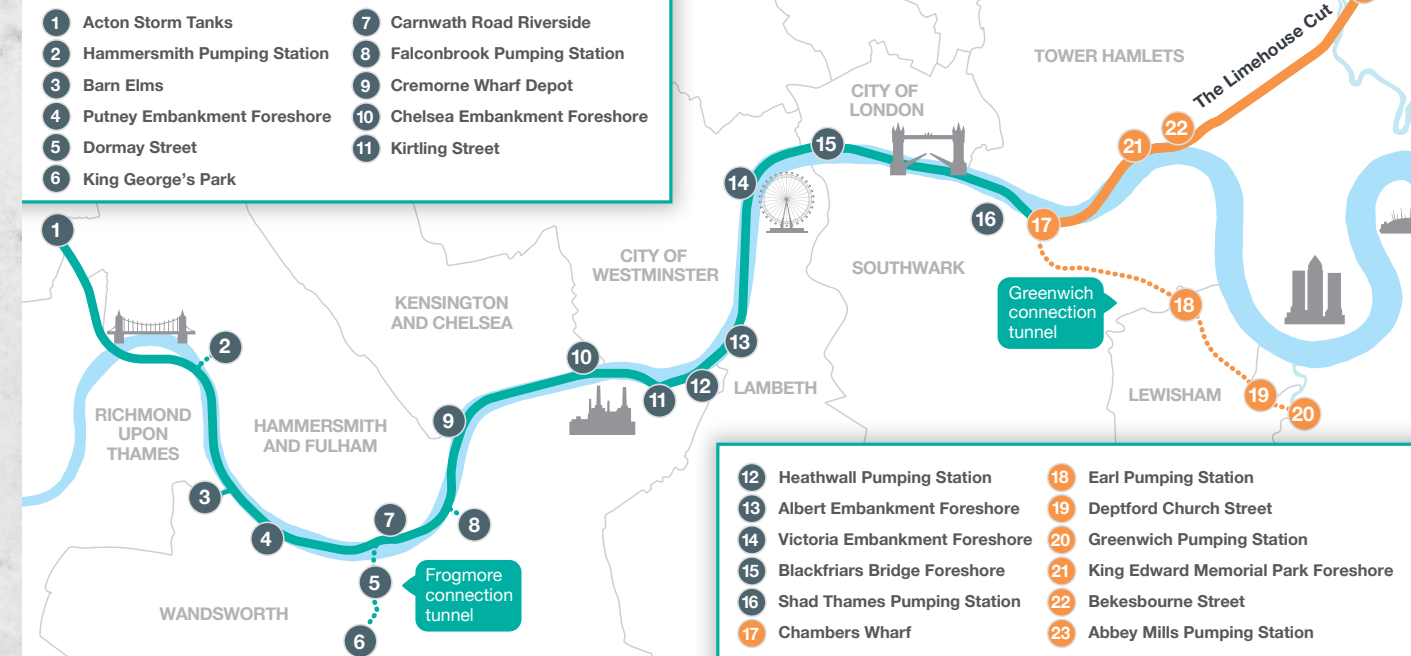
### That's where we come in...

We're building a 25km 'super sewer' under the Thames to intercept those nasty spills and clean up our river.

The project will also bring thousands of new jobs, as well as new public space, creating a better environment for Londoners.



## TIDEWAY ROUTE MAP





## LOCAL NEWS

### TBM ANNIE UPDATE FROM GREENWICH PUMPING

'Annie', a giant tunnel boring machine (TBM) creating the 4.5km link between Greenwich and London's new super sewer, is now around a quarter of the way to her destination.

The 'Greenwich connection tunnel' is a vital piece of Tideway's new infrastructure needed to clean up the River Thames.

Six TBMs are being used to create the super sewer and its connection tunnels on the Tideway project, and Annie is one of only two still working underground.

Although not as big as the TBMs used on the main tunnel, Annie is still around 6.4 wide, and will excavate through Tideway's sites at Deptford Church Street and Earl Pumping Station.

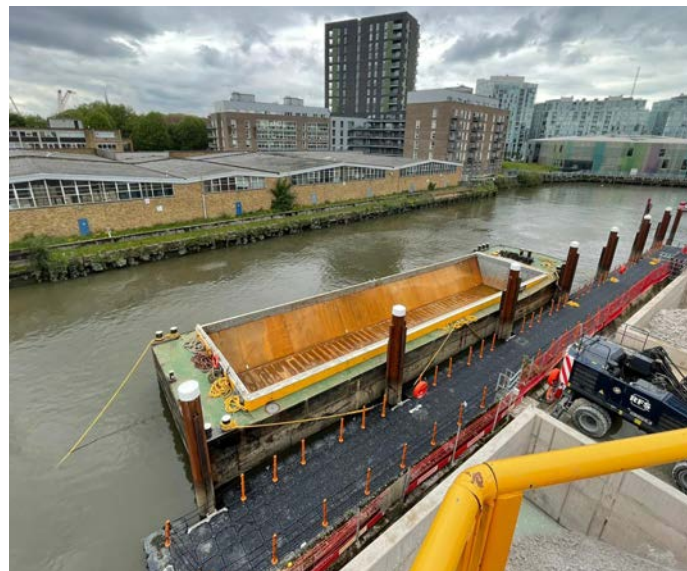
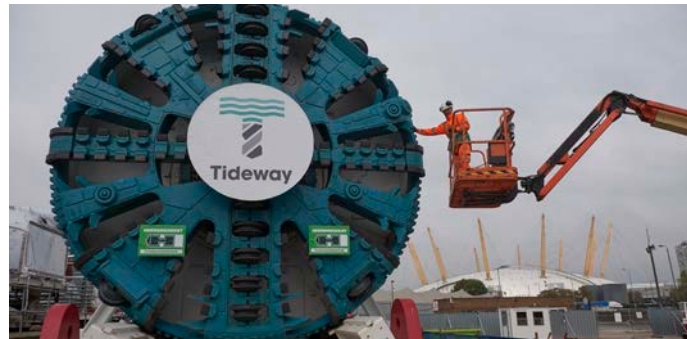
### DEPTFORD CREEK USED TO REMOVE TUNNELLING SPOIL FROM GREENWICH SITE

Barges have begun to navigate Deptford Creek to remove tunnelling spoil from Tideway's site at Greenwich Pumping Station.

The creek, also known as the River Ravensbourne, is a tributary of the Thames, and facilitates marine access for Tideway's barges.

Using the river helps keep tens of thousands of lorries off London's congested roads, is safer for pedestrians and cyclists and produces far fewer emissions than the HGV equivalent.

For the latest updates visit  
[www.tideway.london/news](http://www.tideway.london/news)



## LOCAL NEWS

### TBM SELINA WITHIN 5KM OF SUPER SEWER FINISH LINE



The tunnel boring machine (TBM) being used to create the final, easternmost section of London's new super sewer now has less than 5km to go.

Once complete, the Thames Tideway Tunnel will be fully excavated from Acton in west London, to Abbey Mills Pumping Station, where TBM 'Selina' is set to finish.

TBM Selina arrived in London last summer, carried by a giant vessel called a Skylift 3000, before being lowered 60m underground at Tideway's site in Bermondsey.

At the time of writing, Selina was between Brunel's Thames Tunnel and the Rotherhithe Tunnel, making her way past King Edward Memorial park and on to her destination.

For the latest updates visit  
[www.tideway.london/news](http://www.tideway.london/news)



### TBM URSULA LIFTED FROM SITE AFTER 7.6KM TUNNEL DRIVE

A giant floating crane was used to lift a 700-tonne tunnel boring machine from Tideway's Chambers Wharf site in Bermondsey.

The machine, TBM Ursula, had finished its 7.6km tunnel drive from Kirtling Street in Nine Elms to Bermondsey.

The crane, the 'Matador 3', had travelled from Rotterdam for the manoeuvre, which first involved lifting Ursula from the bottom of a 60m-deep shaft.

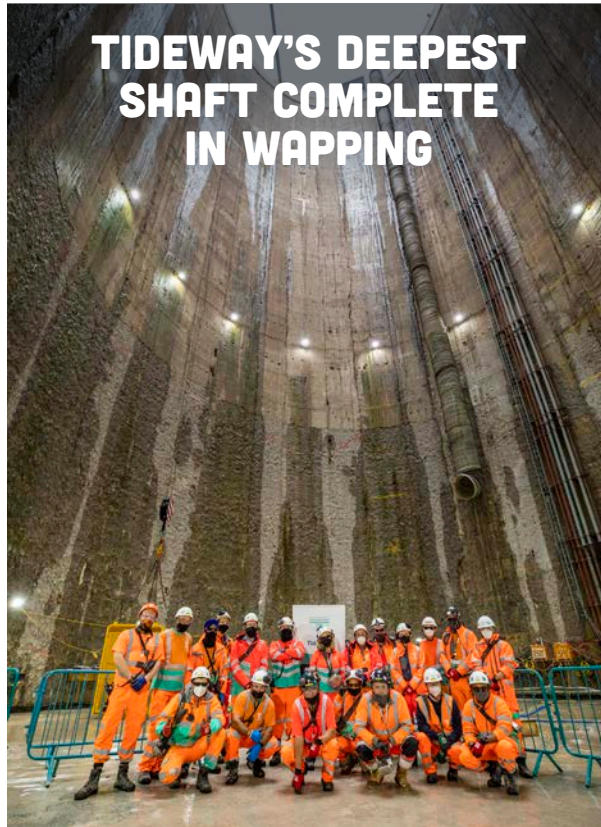
Delivery Manager Jim Avant said: "This is another step towards a cleaner River Thames and is another huge milestone involving so many of our partners to ensure a successful and safe operation. The lifting and removal of TBM Ursula from site required months of detailed planning and collaboration across our teams."





## NEWS IN BRIEF

### TIDEWAY'S DEEPEST SHAFT COMPLETE IN WAPPING



The deepest shaft on the Tideway project is now complete after the team in Wapping successfully poured the concrete base slab.

King Edward Memorial Park is home to the project's easternmost shaft and this summer reached its final depth.

A total of 780m<sup>3</sup> of concrete was then poured in a continuous 17-hour operation. TBM Selina (more information, right) will pass by the site on route to Abbey Mills Pumping Station later in the year.

## TIDEWAY NEWS

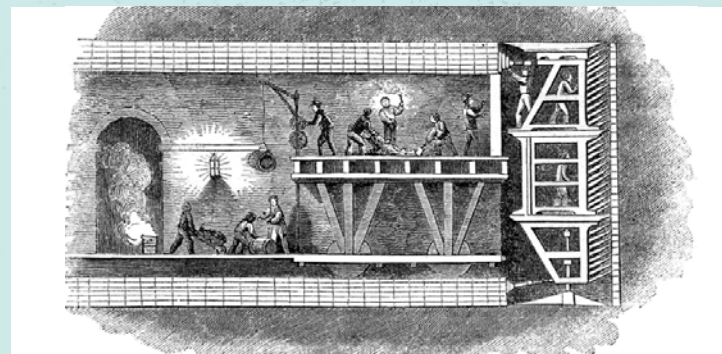


### TIDEWAY TBM PASSES BENEATH WORLD'S OLDEST RIVER TUNNEL

The TBM digging the eastern section of London's new super sewer passed beneath Brunel's Tunnel near Wapping this summer.

TBM Selina (above) is creating the final 5.5km stretch of tunnel between Bermondsey and Abbey Mills Pumping Station, and passed beneath the 178-year-old tunnel in August.

The 'Thames Tunnel' was designed by Marc and Isambard Brunel, completed in 1843 and is thought to be the first built beneath a navigable river.



## NEW FILM SHOWCASES PUBLIC ARTWORKS

Tideway's ambitious programme of public artwork is the subject of a new documentary film which premiered as part of the Totally Thames Festival in September.



While most of the new infrastructure being created as part of the super sewer project will live underground, Tideway has commissioned more than 50 works of art on surface level.

Some of these works are temporary murals exhibited on the hoardings surrounding the construction sites. Other works are permanent, and (along with the new public realm) will be the most visible legacy of the project once complete.

This new film, *Art on the Tideway*, offers the first detailed look at just some of the the works, speaking to a number of artists working in mediums ranging from photography to bronze.

The short documentary film is available to view now on Tideway's YouTube channel: [youtube.com/tidewaylondon](https://youtube.com/tidewaylondon)

## NEW LEASE OF LIFE FOR DEPTFORD NATURE RESERVE

The Creekside Discovery Centre has received a funding boost from Tideway to offer a range of new activities for local residents.

The centre suffered a decline in visitors during the lockdowns, but thanks to the new grant, it has been able to remain operational and plan a range of low-cost and free initiatives for local families.

Jill Goddard, charity founder, said: "The Tideway support is critical. Pre-Covid, Creekside Discovery Centre saw 7,000 people a year; we can get back to that with new events that showcase the creek and how urban regeneration and wildlife can work together to make spaces for people better."

Seven new programmes are now on offer, including public training for mapping wildlife, and land and tide walks. Visit [creeksidecentre.org.uk](https://creeksidecentre.org.uk) for more.





## GO BEHIND THE SCENES

Tunnel Vision is an ongoing web video series from Tideway that will take a closer than ever look at the two dozen construction sites that make up the project, its amazing engineering and the people dedicated to cleaning up the River Thames.

**TUNNEL  
VISION**

Watch Tunnel Vision on our  
YouTube channel  
[www.youtube.com/  
tidewaylondon](http://www.youtube.com/tidewaylondon)



# MEET THE APPRENTICE



## JOEL MWAKA

**Apprentice Electrician**  
*East*

### **What have you learned at Tideway?**

After four years with Tideway, I've completed my L3 Electrical Engineering Apprenticeship and have had experience working on a range of domestic and heavy industry electrical installations, including the build-up and launch of a tunnel boring machine as part of a multi-skilled team.

### **What have you enjoyed about being on Tideway?**

The people are amazing, I enjoy being part of a team, learning different things from different people every day. At the beginning, I couldn't believe what I was seeing, I knew a bit about domestic work but had no experience of tunnelling, the high voltages involved, the size of the cables, it was all amazing!

### **What are your aspirations for the future?**

Now that I am a qualified electrician, I will work as part of the team for another six months. I plan to keep learning and keep improving. I am surrounded by great people that teach me new things all the time and I will hopefully be on this project for another two or three years.

For more information about Tideway, our language interpretation service or for Braille and large print:

08000 30 80 80  
[www.tideway.london](http://www.tideway.london)  
[helpdesk@tideway.london](mailto:helpdesk@tideway.london)



**#SuperSewer**



@TidewayLondon