

Spring 2022

BATTERSEA • BLACKFRIARS • CHELSEA • VAUXHALL • WESTMINSTER



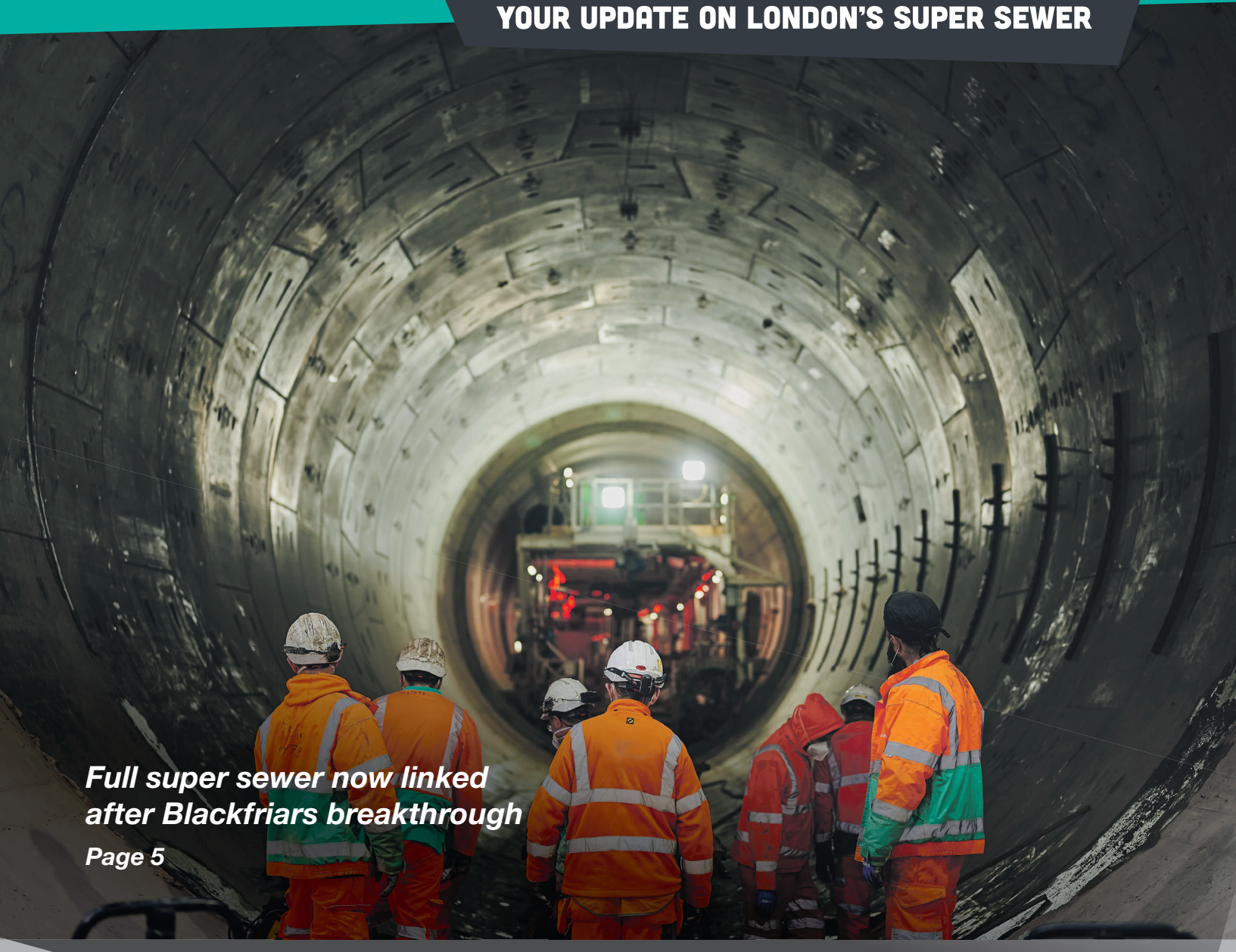
Tideway

RIVER TIMES

YOUR UPDATE ON LONDON'S SUPER SEWER

*Full super sewer now linked
after Blackfriars breakthrough*

Page 5





Tideway

ferrovia
construction



This is the latest issue of Tideway's regular community newsletter, produced especially for our neighbours in the central section of the project.

This newsletter will feature up-to-date news on our events, our progress and other exciting things happening in your area.

GET IN TOUCH



08000 30 80 80



helpdesk@tideway.london



www.tideway.london



@TidewayLondon



WELCOME MESSAGE FROM VIV JONES

Welcome to the first edition of River Times in 2022 - your update on the 25km super sewer currently being built underneath London.

After a challenging 2021, the Central team is looking forward to this year with renewed hope that the end of the Covid pandemic is in sight.

It was heartening that despite the restraints that were felt across the whole Tideway programme, the Central team were still able to meet key construction milestones.

In this packed edition of the River Times, our cover story focusses on the breaking out of grout plugs at Blackfriars, linking the entire super sewer for the first time (more on page 5).

You can also read about the casting of a new roof at our site along Victoria Embankment (page 5) and an update on our vital secondary lining work (page 7).

Elsewhere, we've got plenty of stories about our investment in the local community – whether it's funding a boating course for students in Westminster (page 4); our staff volunteering at Falconbrook Primary School (page 6); or creating a 'happiness garden' for St George's Primary School in Nine Elms.

There's all this and much more. I hope you enjoy this edition and, as ever, if you have any questions or feedback, please don't hesitate to get in touch with our teams using the various channels on the left-hand side.

Viv Jones
Project Director

ABOUT US

London relies on a 150-year-old sewer system built for a population less than half its current size.

As a result, tens of millions of tonnes of raw sewage overflow the system each year and end up in the River Thames.

That's where we come in...

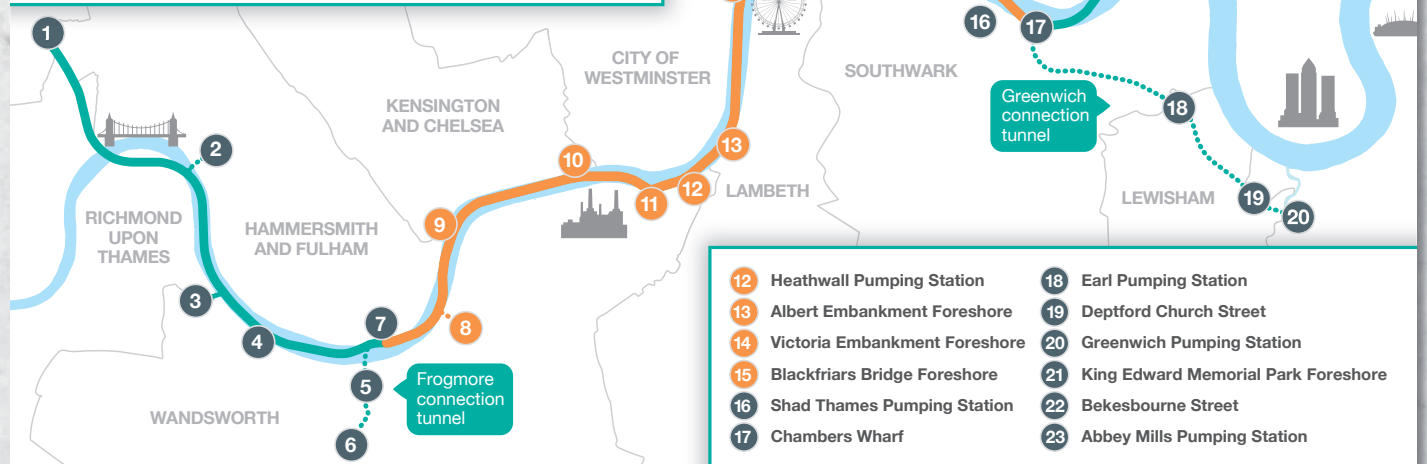
We're building a 25km 'super sewer' under the Thames to intercept those nasty spills and clean up our river.

The project will also bring thousands of new jobs, as well as new public space, creating a better environment for Londoners.



TIDEWAY ROUTE MAP

- | | |
|-------------------------------|---------------------------------|
| 1 Acton Storm Tanks | 7 Carnwath Road Riverside |
| 2 Hammersmith Pumping Station | 8 Falconbrook Pumping Station |
| 3 Barn Elms | 9 Cremorne Wharf Depot |
| 4 Putney Embankment Foreshore | 10 Chelsea Embankment Foreshore |
| 5 Dormay Street | 11 Kirtling Street |
| 6 King George's Park | |





CURVES OF STEEL AT HEATHWALL PUMPING STATION

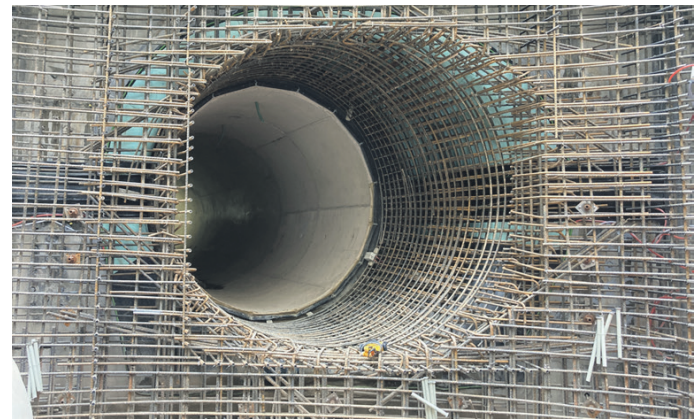
A multidisciplinary team of experts have come together to undertake complex reinforced concrete works at Tideway's Heathwall Pumping Station site.

A geometric reinforcement cage was installed at the junction where sewage will enter the main shaft from the smaller interception shaft. At peak flow, this junction can see up to 12m³ of water per second.

The work has involved a great deal of planning and input; designers have created different sets of drawings for shape, waterproofing and reinforcement design and senior engineers have used these to establish a safe, high quality and efficient construction methodology.

Alex Alchin, Project Manager for Tideway's Heathwall Pumping Station site said: "The best laid plans can be made for this type of work, but it is

highly dependent on the skill and experience of the steel fixing operatives. It is a very specialist trade to read and understand reinforcement drawings and then tie all the steel in the correct order to form the correct shape. The tradespersons are the real heroes of this work."



WESTMINSTER STUDENTS GET CONNECTED WITH THE THAMES

Students from Harris Westminster Sixth Form Academy have begun a boating course on the River Thames thanks to Tideway funding.

The school aims to send young people from more deprived areas of London to top universities and is



a new partner for Westminster Boating Base (WBB), the water sports charity based on the Thames close to Tideway's construction sites in Nine Elms.

Tideway gave WBB funding in 2020 to allow it to restart its activities once pandemic restrictions had lifted and the charity chose its neighbour Harris for the course, which will run until the summer.

Among the first group of students on the course was 17-year-old David Isuwe from Wembley, who had never been on the Thames and has only seen it on a few occasions. He said: "This is so cool, it gives you a different perspective on London."

LOCAL NEWS

SUPER SEWER LINKED AFTER BLACKFRIARS BREAKTHROUGH



The full length of the super sewer is now linked following the breaking out of two giant grout plugs deep underground at Tideway's Blackfriars site.

From Acton in west London all the way to the tunnel boring machine digging the final, eastern section of the super sewer, the Thames Tideway Tunnel is now fully linked.

The removal of the east and west plugs late last year allowed the tunnelling team to take over the shaft bottom to install rails that will enable the secondary lining apparatus to cross the shaft on its way to the Chambers Wharf site in Bermondsey.

As the Blackfriars shaft was excavated through the main tunnel, the portion beneath was filled with foam concrete to ensure the team wasn't excavating into a void.

Around 1,500 tonnes of removed grout material was taken away by barge on the River Thames, preventing the need for hundreds of lorry journeys on London's streets.

ROOF INSTALLED AT VICTORIA EMBANKMENT

The team at Victoria Embankment has now cast the concrete roof.

This will form part of the new public space to be created at this location (pictured, bottom) - one of seven new areas that will be built along the Thames once Tideway's work to clean up the Thames is completed.

The pouring of the shaft roof followed completion of the internal structures. The roof (pictured) is supported by 17 precast planks on top of three shaft roof beams and a heading beam.



NEWS IN BRIEF



LOCAL SCHOOL TO BENEFIT FROM NEW SHELTER

Falconbrook Primary School in Wandsworth is set to benefit from a refurbished shelter over its playground thanks to a funding pledge from Tideway.

The school, a short walk from Falconbrook Pumping Station, is looking to build an ‘inspiring outdoor area’ that will double-up as a valuable community asset by repairing and rebuilding an existing wooden canopy structure over the playground.

Beyond funding, Tideway’s staff regularly volunteer at the school, most recently cleaning up the school house and giving it a new lease of life (see above).

FOCUSSED ON SUSTAINABILITY

Tideway’s environmental benefits and focus on sustainability have been highly rated by S&P Global Ratings. The super sewer project has been assigned an Environmental, Social and Governance Evaluation of 76 out of 100, reflecting that “sustainability is well embedded in the company’s strategic objectives and operations.”

TIDEWAY NEWS



PRIZE FOR ROWING PARTNERSHIP

Tideway has won the Business Contribution Award at the London Sports Awards for the project’s long-term collaboration with rowing charity, London Youth Rowing (LYR).

The award recognises the valuable role of businesses in providing sponsorship, support and resources that enable communities and sport to thrive in London.

And now, the super sewer project’s long-term partnership with LYR has been recognised for the fantastic impact it has had on young people across the capital.

Tideway’s partnership with LYR is now almost a decade old, and has seen the launch of a number of initiatives helping young people to get rowing.

To date, the partnership has helped more than 12,000 young people through a number of initiatives, including Row4Results, Active Row and Breaking Barriers.

Go to tideway.london/benefits/our-community for more information



SECONDARY LINING UPDATE ON CENTRAL TUNNELS

The team working on the secondary lining for a 3.1km section of the super sewer between **Bermondsey and Blackfriars** is making good progress, with less than 3km remaining.



The secondary lining is needed to add extra strength to the tunnels, and will create a smooth surface over which the sewage can flow once the tunnel is operational in 2025.

This lining is created using a giant machine called a 'shutter' (pictured), which casts a fresh layer of concrete over the segmental primary lining.

Having moved the shutter 7.6km from Kirtling Street in Battersea, the team is now working back and has less than 3km of the tunnel to line.

This was a highly complex operation and required detailed teamwork from a number of teams above and below ground.

Once this section has its secondary lining, the central team will have completed all 12.5km needed between Fulham and Bermondsey.

TIDEWAY VOLUNTEERS HELP PLANT 'HAPPINESS GARDEN'

The team working on the central section of the super sewer have been lending a hand to build a 'happiness garden' in Battersea.

The volunteers from Tideway's Kirtling Street and Albert Embankment sites have been supporting Groundwork London to help plant, paint and tidy up the playground at St George's Primary School in Nine Elms.

Alick Whitfield, Community Relations Manager for the central section of the Tideway project, said: "St George's is a lovely primary school close to our main tunnelling site.

"We are delighted to help create a wonderful green space within the playground which can be used for both enjoyment and learning by the children."

The new garden is an area of the playground that borders the railway viaduct. The team working on the central section of the super sewer have provided £1,000 worth of gardening materials and tools to help with borders and planting, as well as providing volunteers for two afternoons.



GO BEHIND THE SCENES

Tunnel Vision is an ongoing web video series from Tideway that takes a closer than ever look at the two dozen construction sites that make up the project, its amazing engineering and the people dedicated to cleaning up the River Thames.

**TUNNEL
VISION**

Watch Tunnel Vision on our
YouTube channel
[www.youtube.com/
tidewaylondon](https://www.youtube.com/tidewaylondon)



MEET THE APPRENTICE



MIRANDA TURBIN

Site Engineer Apprentice
Central sites

What have you learned at Tideway?

I have learned a lot at Tideway after coming to the role straight from sixth form. Having been on the project for two-and-a-half years, I have seen how many different teams of people are required to construct a large project. It has taught me how important it is to work as a team and collaborate with people to get work done.

What have you enjoyed about being on Tideway?

I have enjoyed working in various teams from lots of different backgrounds. I have loved being able to experience construction works in both a landside and marine environment. In particular, my highlight was being able to see a giant culvert floated into place at our Blackfriars site.

What are your aspirations for the future?

I look forward to finishing my apprenticeship, graduating and working towards becoming a chartered engineer with the ICE. I would like to build on my engineering knowledge and experience by going to work on different construction projects around the world.

For more information about Tideway, our language interpretation service or for Braille and large print:

08000 30 80 80

www.tideway.london

helpdesk@tideway.london



#SuperSewer



@TidewayLondon