

ACTON STORM TANKS

Community Liaison Working Group

Tuesday 5 April 2022



Tideway

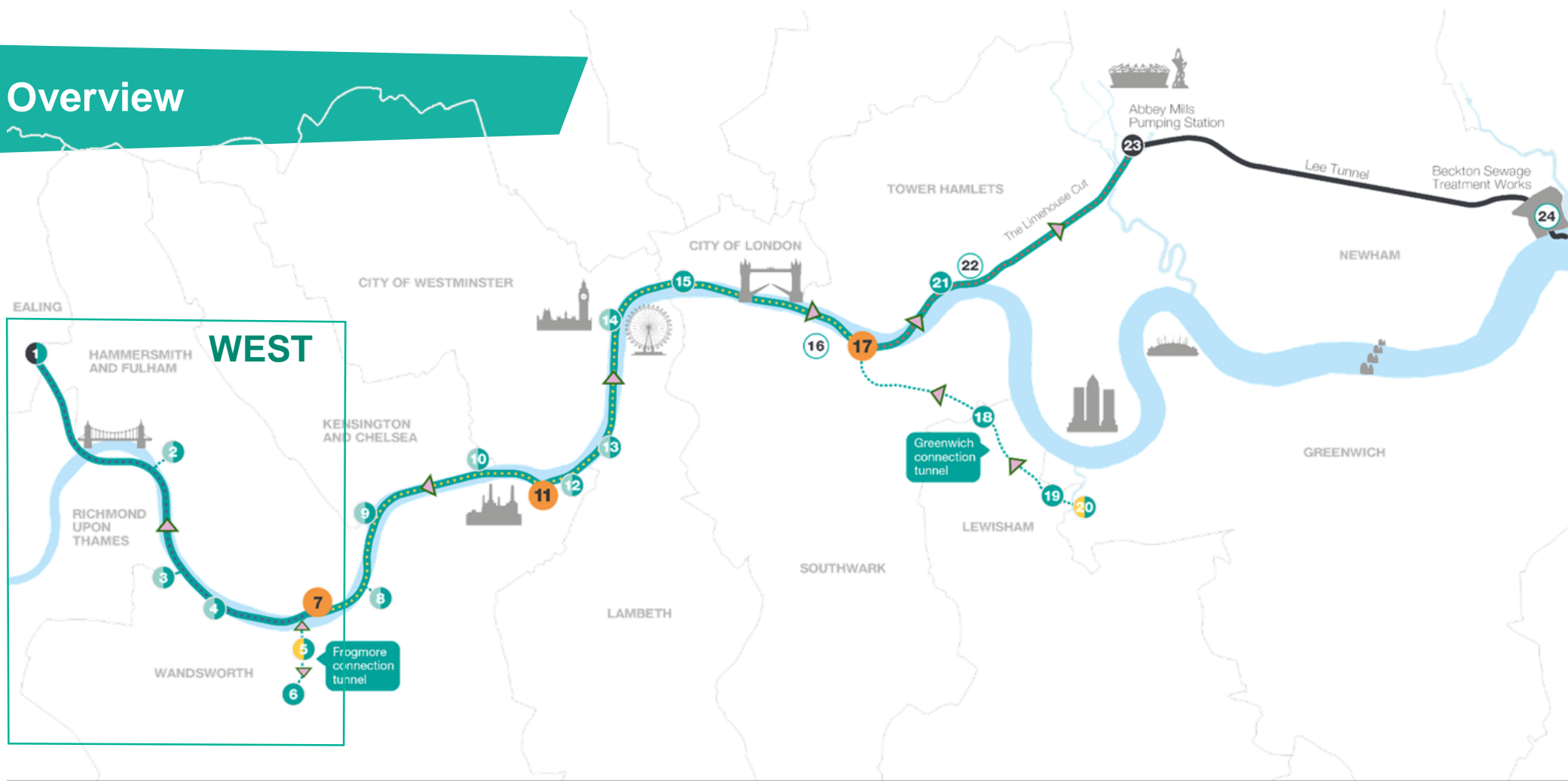




WELCOME

Michelle Murphy, Section Manager

Tideway Overview

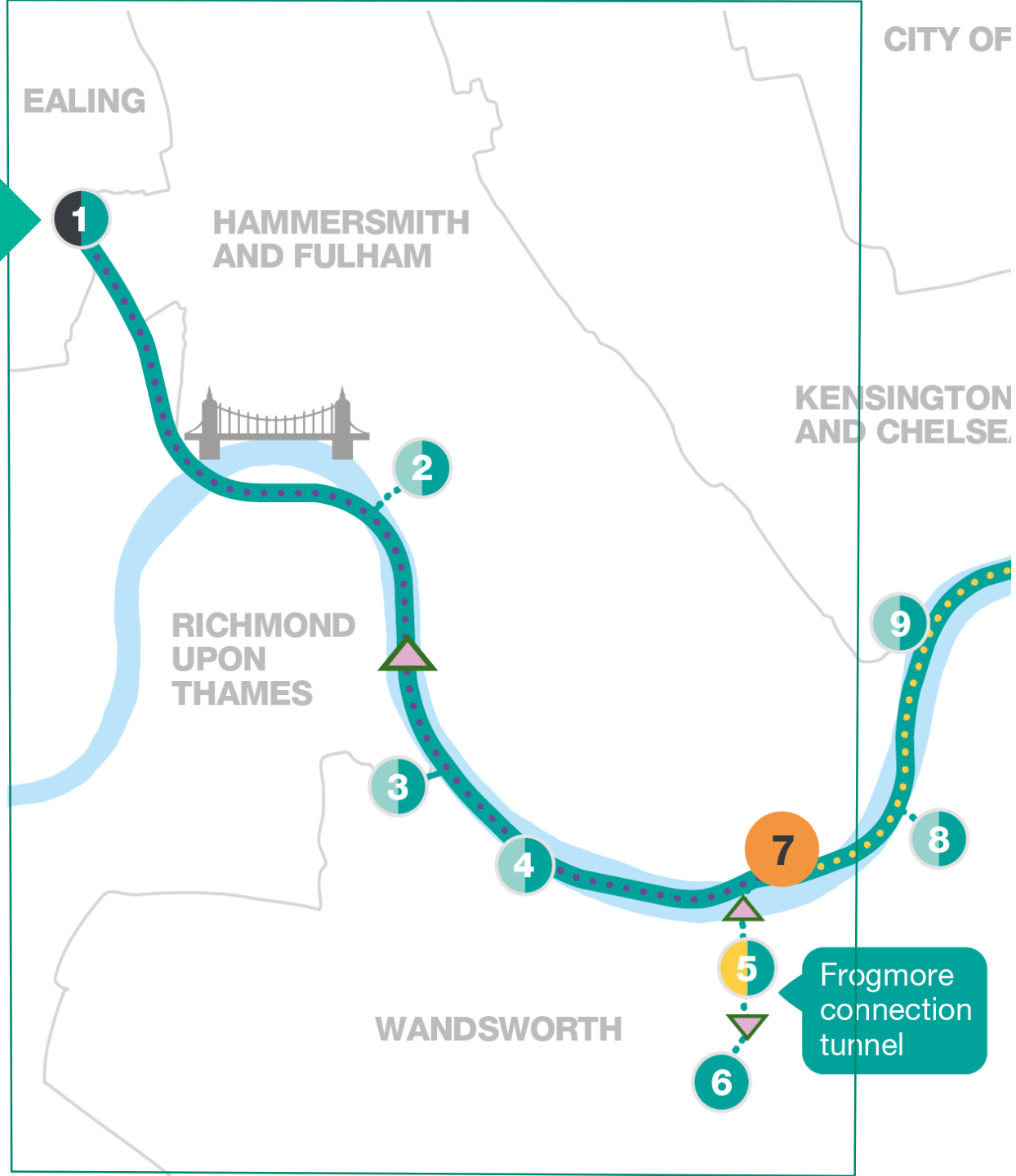


Map key

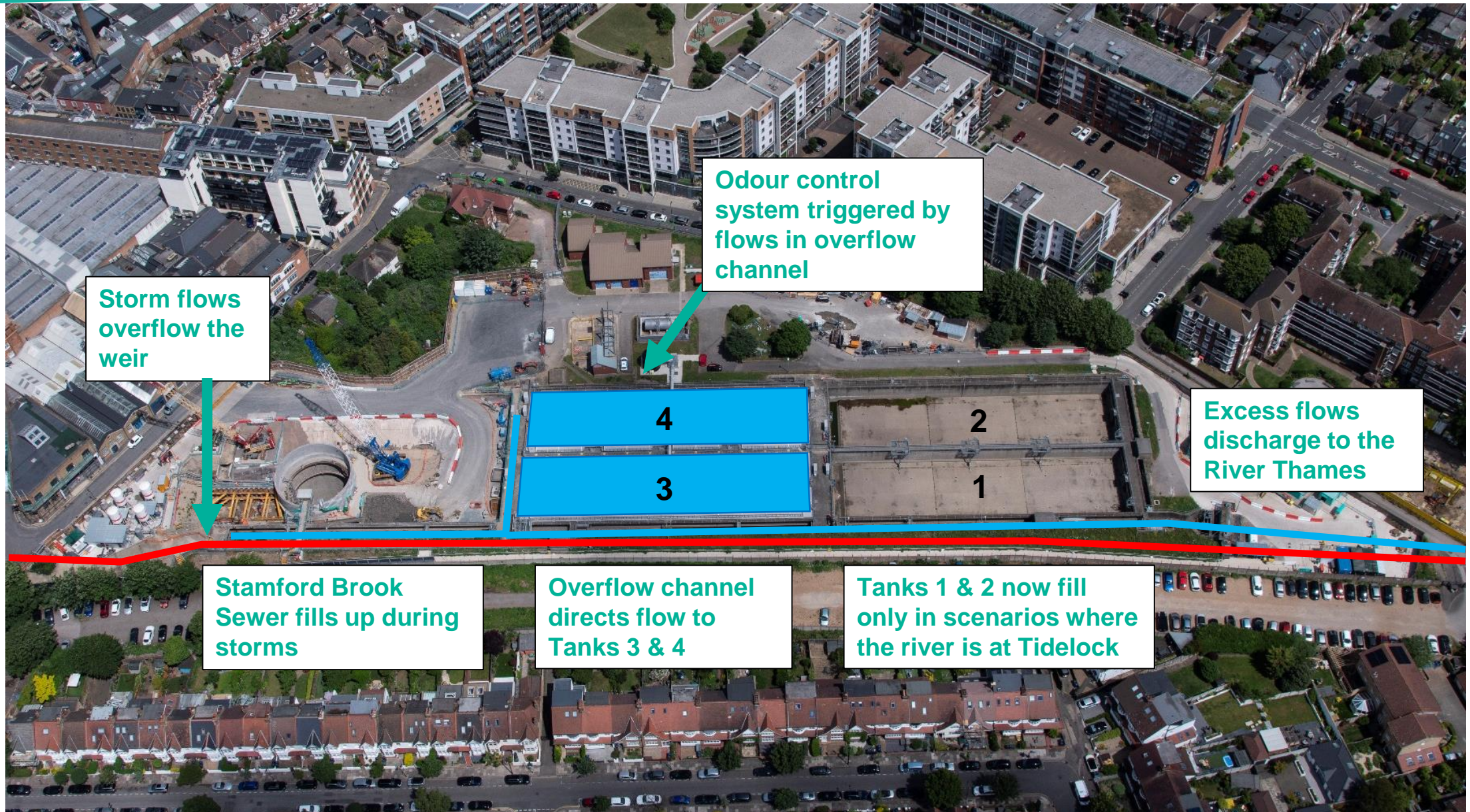
- | | | | | |
|------------------------------------|--------------------------|-----------------------------|-------------------------------|-------------------------------------|
| Main tunnel drive tunnel site | Main tunnel | Acton Storm Tanks | Cremorne Wharf Depot | Chambers Wharf |
| Main tunnel reception site | Connection Tunnels | Hammersmith Pumping Station | Chelsea Embankment Foreshore | Earl Pumping Station |
| CSO site | Lee Tunnel | Barn Elms | Kirtling Street | Deptford Church Street |
| Short connection tunnel drive site | Proposed drive direction | Putney Embankment Foreshore | Heathwall Pumping Station | Greenwich Pumping Station |
| Long connection tunnel drive site | West works site | Dormay Street | Albert Embankment Foreshore | King Edward Memorial Park Foreshore |
| System modifications | Central works sites | King George's Park | Victoria Embankment Foreshore | Bekesbourne Street |
| | East works site | Carnwath Road Riverside | Blackfriars Bridge Foreshore | Abbey Mills Pumping Station |
| | | Falconbrook Pumping Station | Shad Thames Pumping Station | Beckton Sewage Treatment Works |

Tideway West

Acton Storm Tanks



Acton Storm Tanks



Acton Storm Tanks

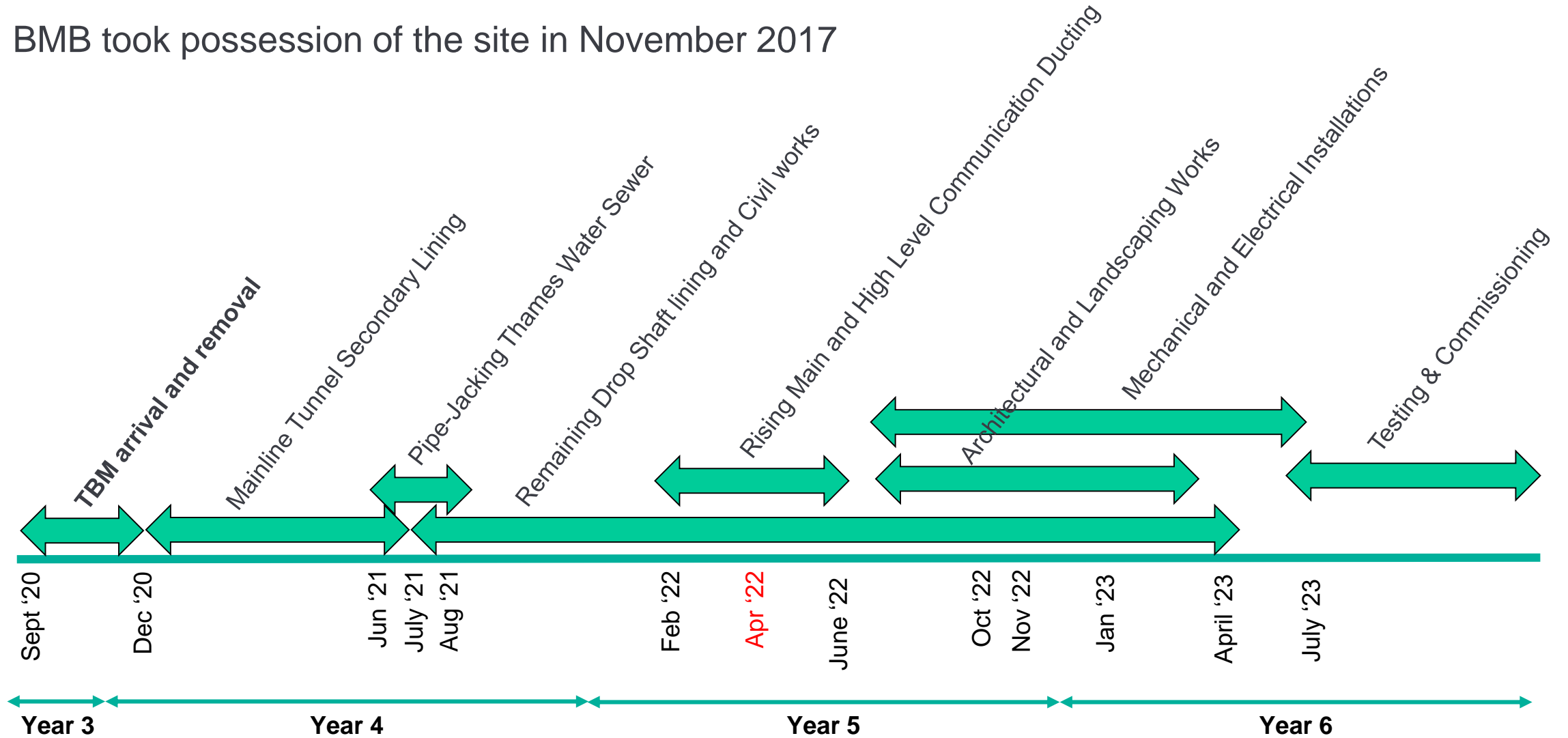


Problem
29 discharges per year
312,000t sewage

Solution
Thames Tideway Tunnel
No expected discharges

Timeline

- BMB took possession of the site in November 2017



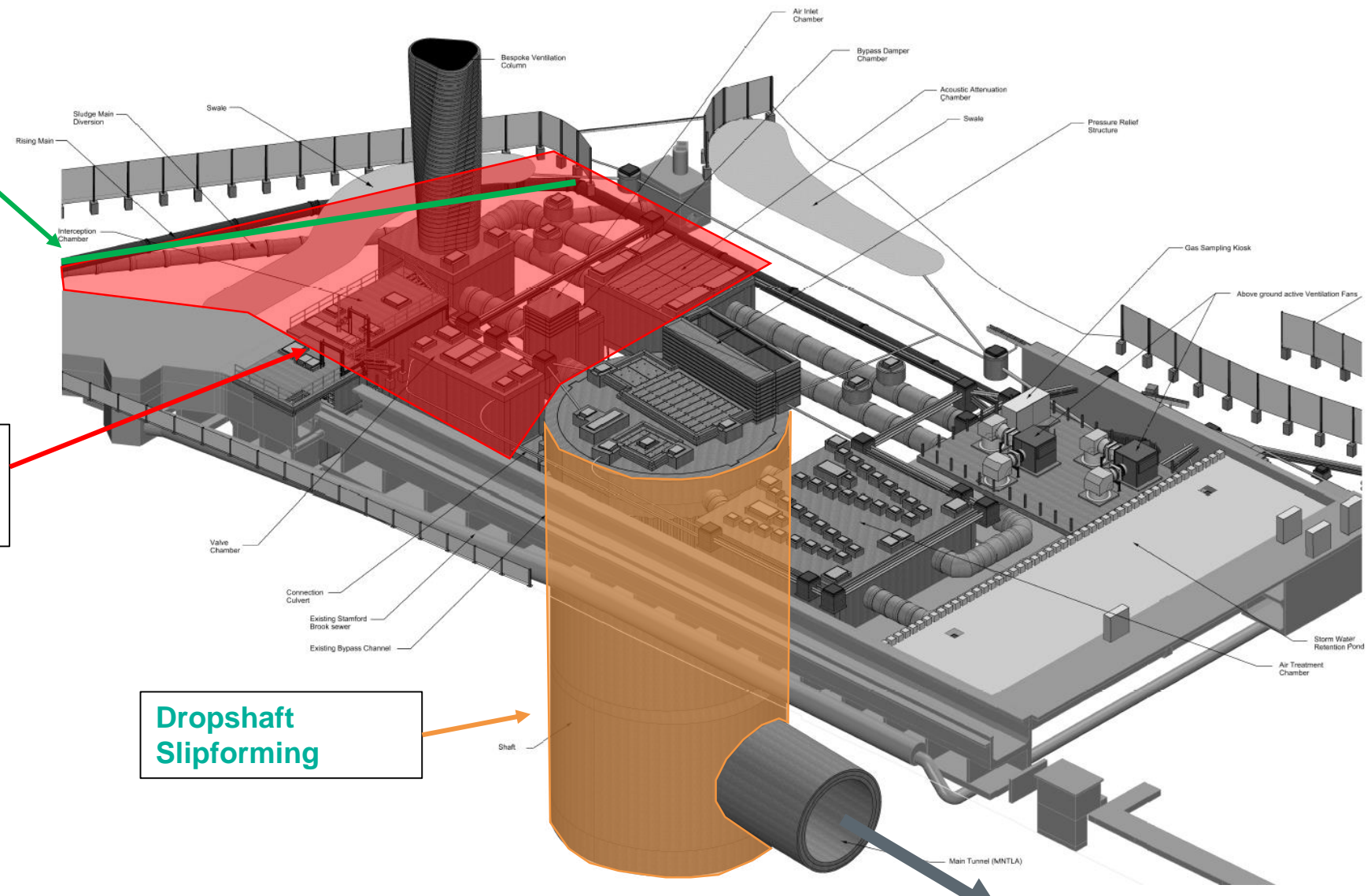
Last 9 Months

Pipe-Jacking

Phase 1 of Rising Main and High Level Comms Ducting

Dropshaft Slipforming

To Carnwath Road



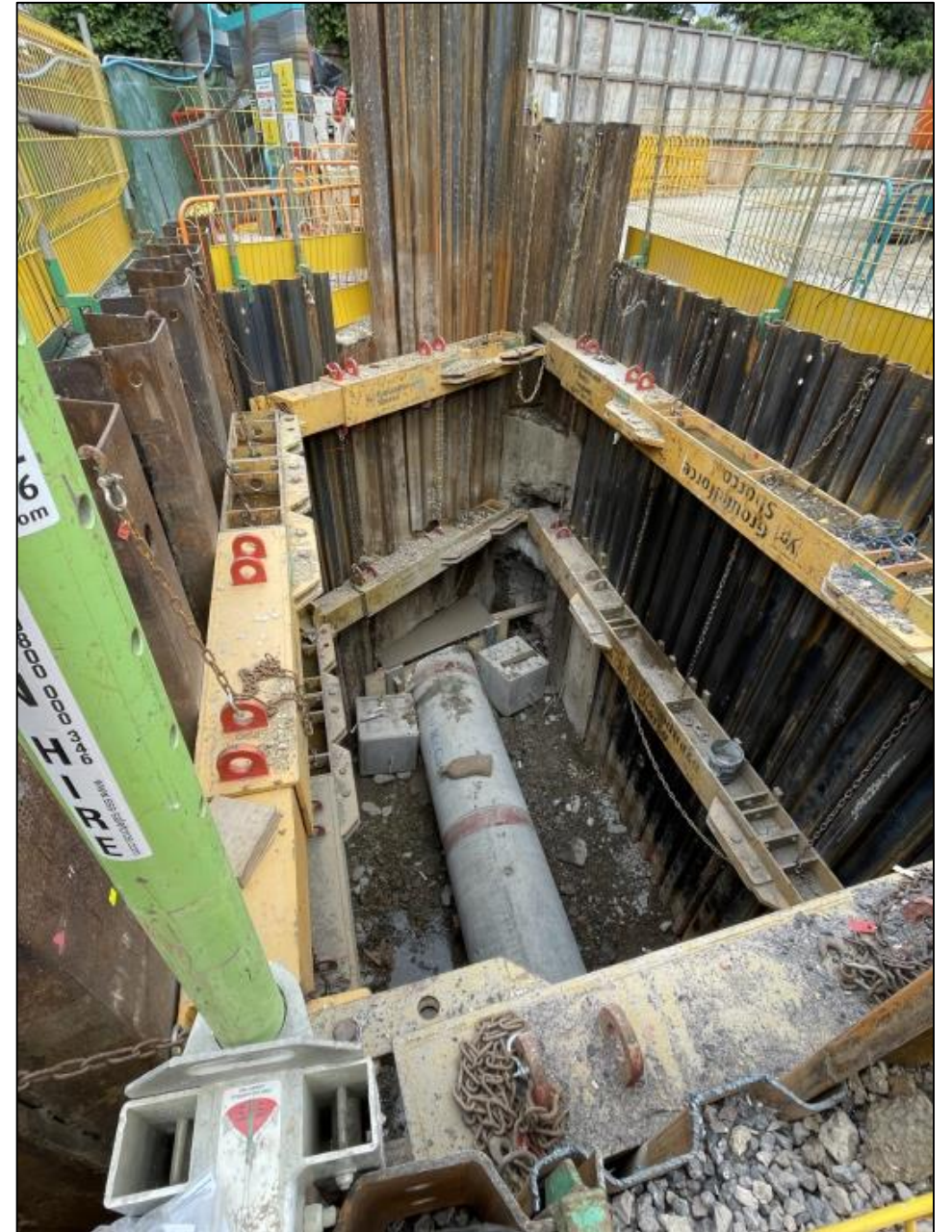
July and August 2021 Dropshaft

- Preparation works for drop shaft slipforming



August 2021 Pipe-Jacking

- Syphon main pipe-jacking operation complete



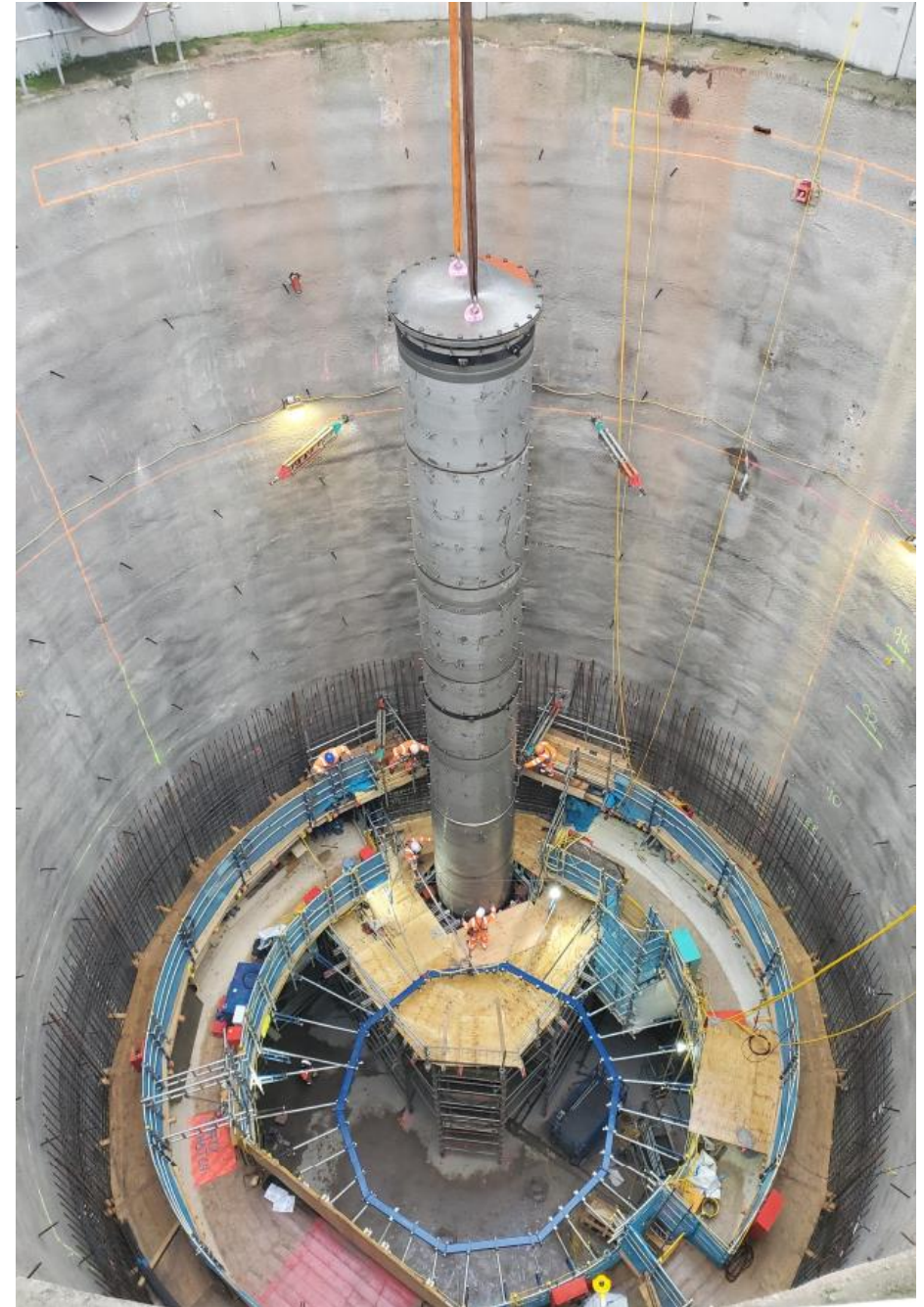
September 2021 Dropshaft

- Commenced installing reinforcement and slipforming shutter



October and November 2021 Dropshaft

- Commenced slipforming the shaft
- Installed vortex tube



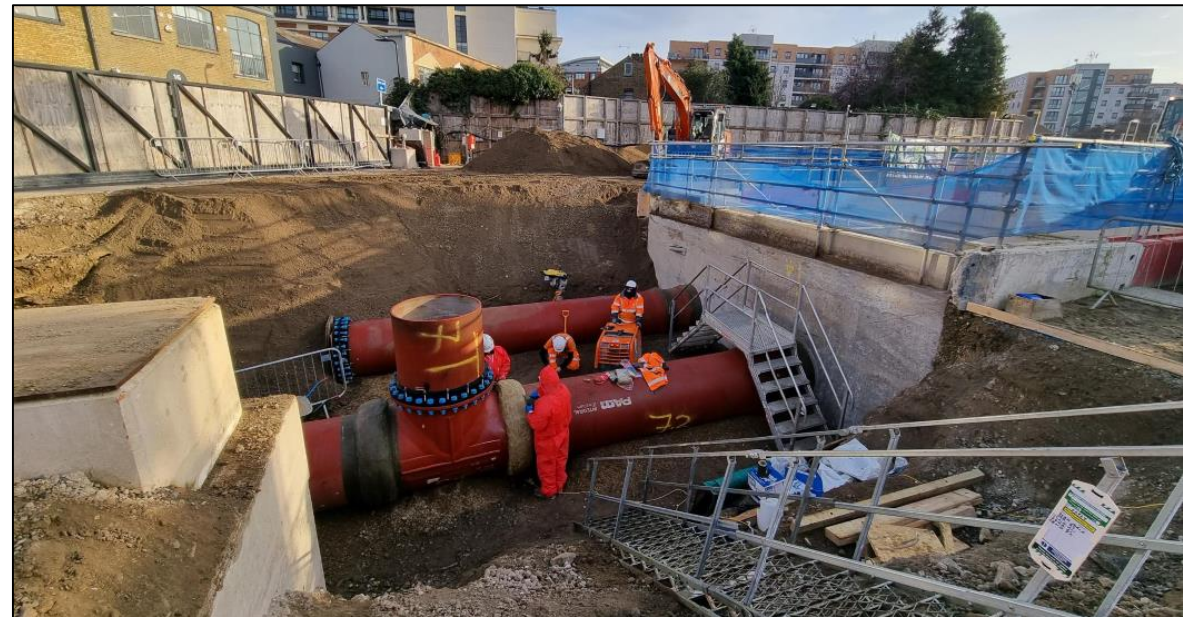
December 2021 - February 2022 Slipforming

- Completed slipforming of the dropshaft



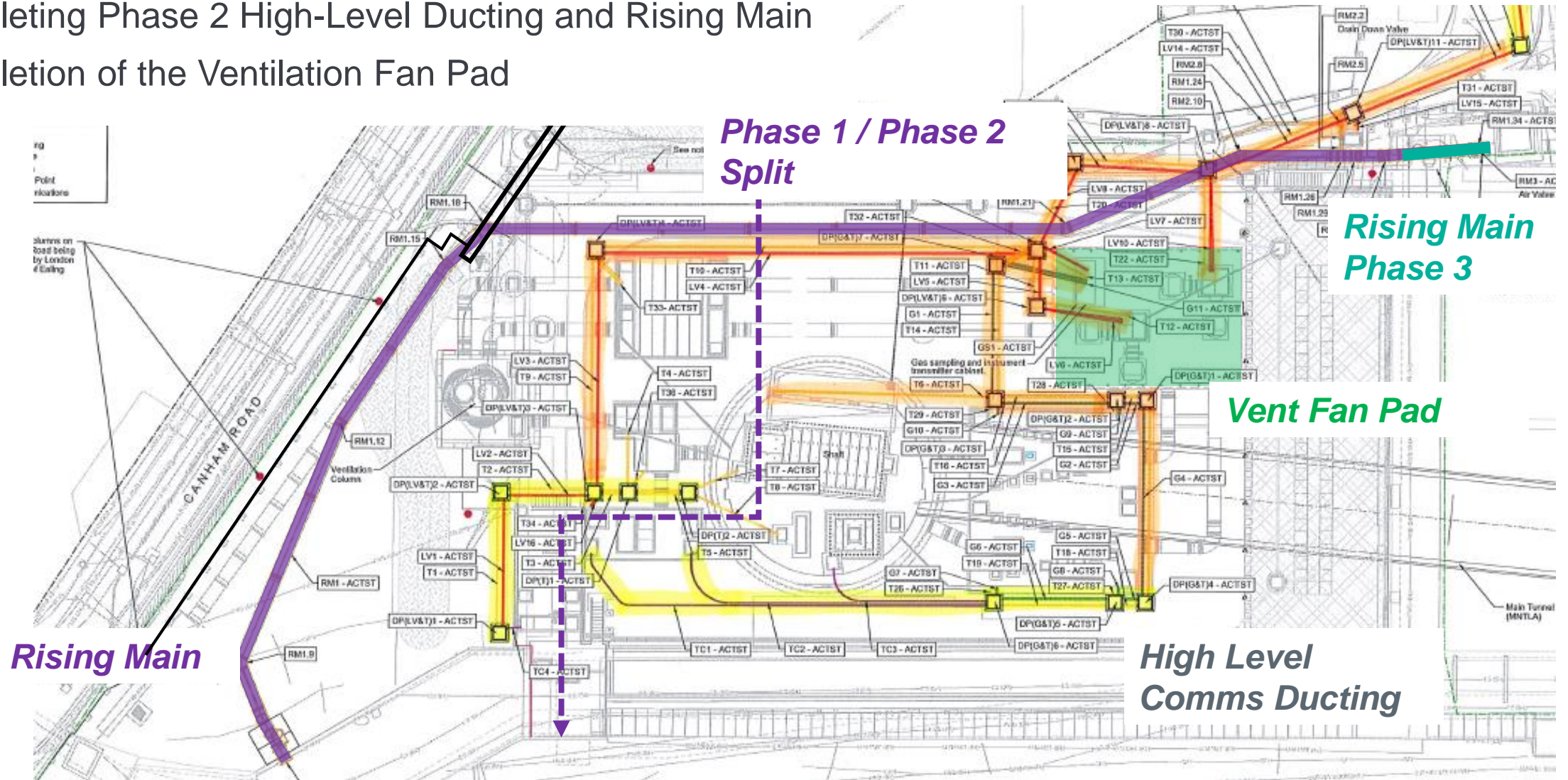
March 2022 Phase 1 Ducting and Rising Main

- Phase 1 of high level ducting and rising main completed
- Ventilation ducting completed



Upcoming Works

- Completing Phase 2 High-Level Ducting and Rising Main
- Completion of the Ventilation Fan Pad

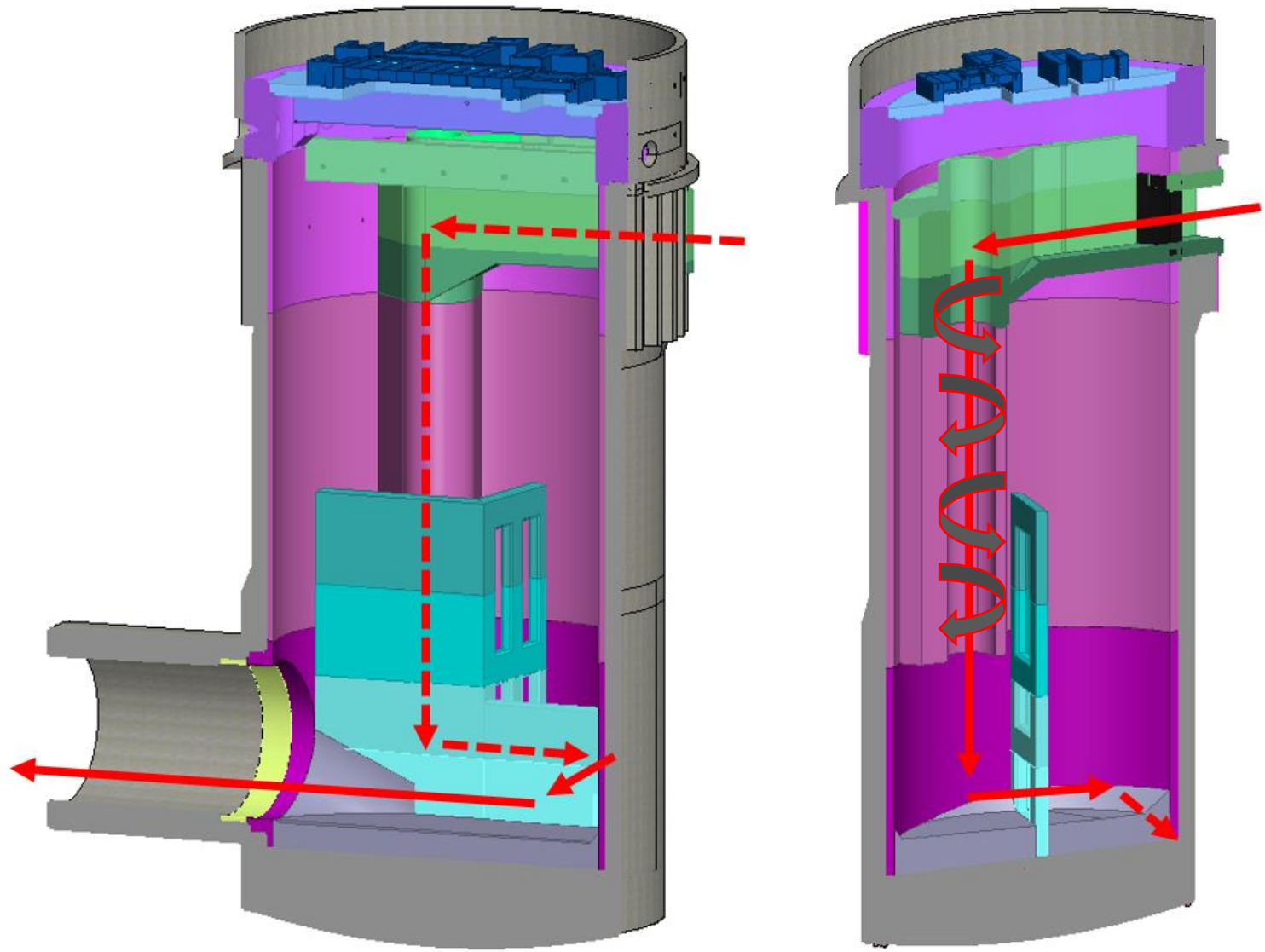


Upcoming Works

- Casting the main tunnel portal



Upcoming Works



Landscaping

- Internal storm tanks landscaping design approved by the London Borough of Ealing in July 2019
- Advance tree planting at Warple Way perimeter
- Soft landscaping to be implemented along northern Canham Road boundary including native wildflower meadow planting and native tree species including oak, cherry, hornbeam and birch.





**COMMUNITY
ENGAGEMENT**

Katie Ashton, Communications Manager

Community Engagement

20 complaints have been received:

- 18 x noise and vibration
- 2 x lighting

8 general enquiries have also been received including topics such as: the CLWG, tunnel route, settlement, and the project in general

All enquiries have been responded to within 24 hours (where possible) and if needed, in collaboration with Thames Water



Tideway

Call: 08000 30 80 80

Email: helpdesk@tideway.london

Write to: Freepost TIDEWAY



0800 316 9800

Available 24/7 to answer all enquiries & complaints related to the operations and maintenance of the site

How To Make A Claim if Affected By Tideway's Work

Who do I go to for advice?

Independent Advisory Service (IAS) Helpline for independent advice:

- 0800 917 8845 or info@tidewayias.co.uk
- Tideway's Compensation Lead (CL), is available for personal assistance and advice.
 - Helpdesk: 08000 30 80 80 / helpdesk@tideway.london

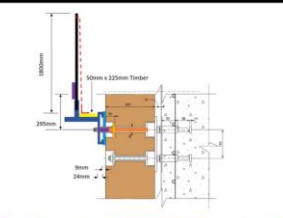
How do I submit my claim?

The CL can submit your claim to the Independent Compensation Panel (ICP) on your behalf, or you can submit your claim direct to the ICP: admin@tidewayicp.london

The IAS can send you a claim form, or you can download the form off the Tideway website: www.tideway.london/help-advice/compensation-information/Independent-Compensation-Panel


Community Engagement

- Our community support activities are continuing
- 595 volunteering hours undertaken in 2021 - including support for STEM activities and local community groups
- Over £2,000 raised for Breast Cancer Care
- Support for 26 work placement students
- Please contact us if you are aware of an opportunity or community group that we could possibly help



Foreshore Structure Edge Protection
Design Challenges

- Fixings – finding a way of fixing the edge protection system onto the existing structure
- Span between fenders – the span between fenders is almost 5m, the maximum allowed span between supports is 3m
- Rigidity – ensuring that the maximum deflections in the system are below 50mm (as required by British standards)
- Obtaining CAT II design approval – far more complex design than I had previously worked with



Video Meeting (2021)

RC MR
DG DB
KL ML
HM SM
RJ



How To Stay Up To Date

Follow us on social media: **@TidewayLondon**



en-gb.facebook.com/TidewayLondon/



www.instagram.com/tidewaylondon/



www.linkedin.com/company/tideway-london/



twitter.com/TidewayLondon



Tideway

RECONNECTING LONDON WITH THE RIVER THAMES

#SuperSewer

www.tideway.london