

CHAMBERS WHARF

Community Liaison Working Group



Tideway



04 April 2022
Chair - Patricia Brown

Content

Topic	Lead
Welcome, introductions and apologies	Patricia Brown
Notes and actions from last meeting	Patricia Brown
Updates from project team <ul style="list-style-type: none"> • Construction update and future programme including: <ul style="list-style-type: none"> - Arrival and removal of TBM Annie at Chambers Wharf - Arrival of TBM Selina at Abbey Mills - Change of site activities - Secondary lining - Commissioning • Noise and air quality • Mitigation • Community Investment and Community Relations 	Tideway team Eddie Edmonds Emily Black Joseph de la Fuente Emily Black Martin Griffiths
Southwark Council Community Enhancement Fund and Section 106 updates	Southwark Council Jacqueline Christie
Feedback and discussion	All
Any other business	All

Outstanding Actions

13/12/2021	Tideway to provide more detailed, visual information of the phasing of the end of tunnelling and start of secondary lining activities.	Tideway Team	Open – will be closed during meeting
13/12/2021	Tideway to provide more information on the Commissioning process at the next CLWG and what it will mean for residents.	Tideway Team	Open – will be closed during meeting
04/11/2021	Southwark Council officers to follow up with housing team on security issues for Fountain Green Square	Southwark Council	Open and ongoing. Southwark to provide update Southwark Council officers are in discussions with relevant teams to temporarily block up the area.
04/11/2021	Southwark Council to host another walkabout to promote the Community Enhancement Fund.	Southwark Council	Open. Southwark to provide update Email GetInvolved@tideway.london to register interest in attending a future date.
27/09/2021	Southwark Council officers to engage with Wrayburn Community Organisation over Bevington Street grassed area.	Southwark Council	Open and ongoing. Southwark to provide update Southwark Council officers confirmed that if any plans come forward for the Bevington Street area then the Wrayburn Community Organisation will be engaged with. Currently no further plans have been proposed.

PROJECT OVERVIEW



Tideway



<p>Tideway BMB WEST</p> <ul style="list-style-type: none"> 1 Acton Storm Tanks 2 Hammersmith Pumping Station 3 Barn Elms 4 Putney Embankment Foreshore 5 Dornay Street 6 King George's Park 7 Carnwath Road Riverside 	<p>Tideway FLO CENTRAL</p> <ul style="list-style-type: none"> 8 Falconbrook Pumping Station 9 Cremorne Wharf Depot 10 Chelsea Embankment Foreshore 11 Kirtling Street 12 Heathwall Pumping Station 13 Albert Embankment Foreshore 14 Victoria Embankment Foreshore 15 Blackfriars Bridge Foreshore 	<p>Tideway CVB EAST</p> <ul style="list-style-type: none"> 16 Shad Thames Pumping Station 17 Chambers Wharf 18 Earl Pumping Station 19 Deptford Church Street 20 Greenwich Pumping Station 21 King Edward Memorial Park Foreshore 23 Abbey Mills Pumping Station 	<p>Tideway Thames Water</p> <ul style="list-style-type: none"> 22 Bekesbourne Street 24 Beckton Sewage Treatment Works <p>MAP KEY</p> <ul style="list-style-type: none"> ● Main tunnel drive tunnel site ● Main tunnel reception site ● CSO site ● Short connection tunnel drive site ● Long connection tunnel drive site ○ System modifications ■ Main tunnel ⋯ Connection Tunnels — Lee Tunnel ◀▶ Proposed drive direction ● West works site ● Central works sites ● East works site
---	---	--	---



Tideway

PROJECT OVERVIEW

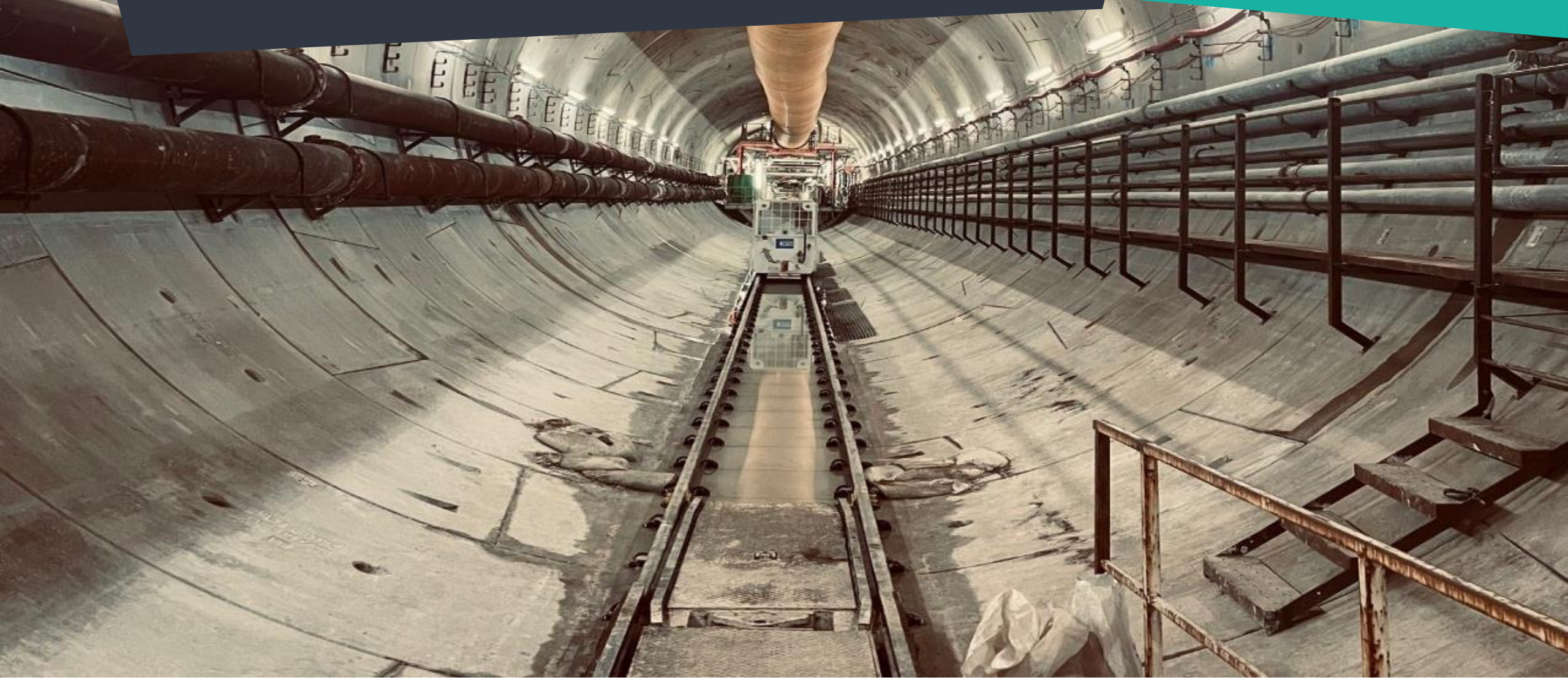
AERIAL VIEW OF CHAMBERS WHARF



CONSTRUCTION UPDATE



Tideway



TUNNEL BORING MACHINE PROGRESS & CURRENT POSITION

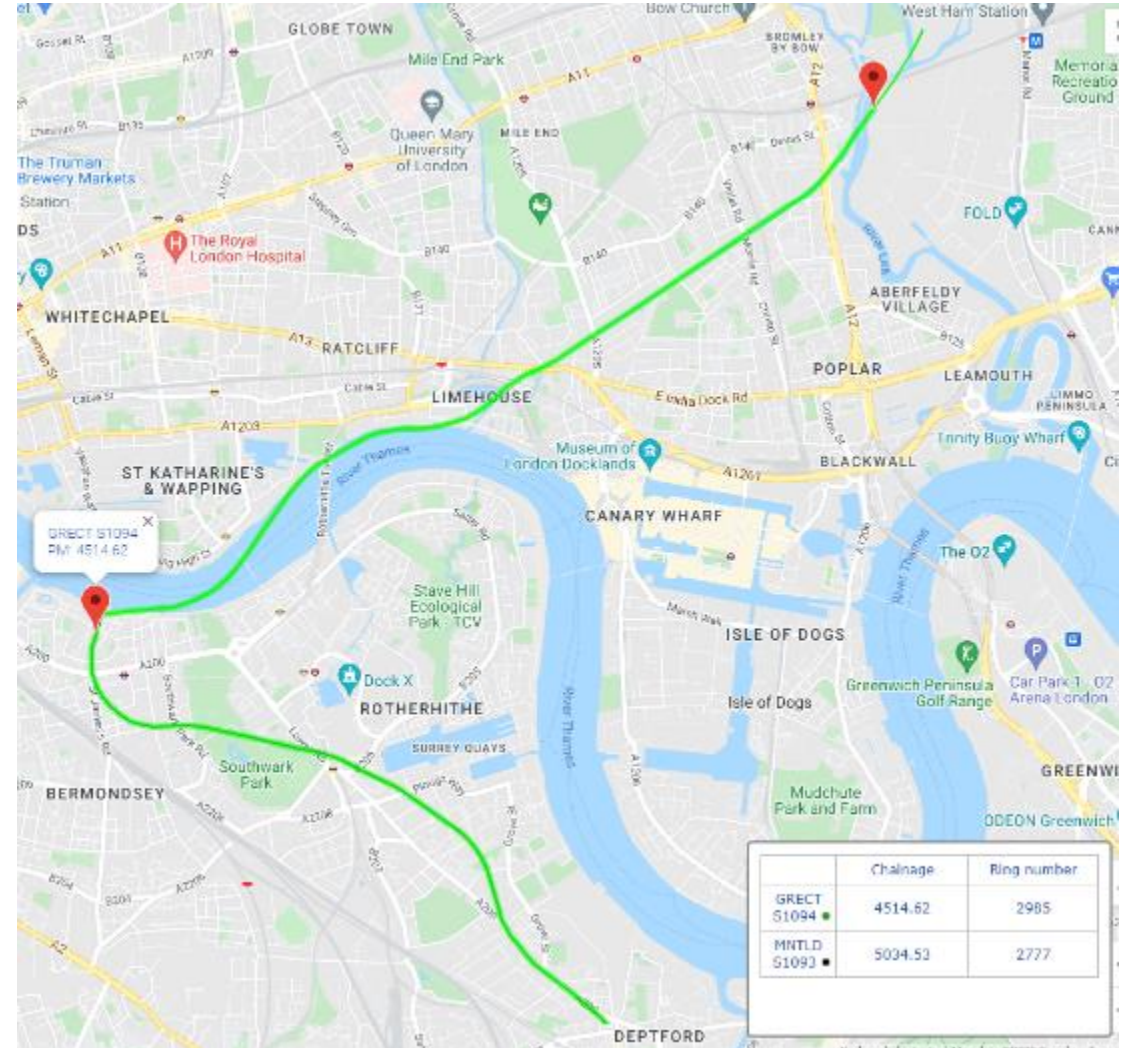
TBM Selina

- Completed 2767 rings
- Constructed 5035m of tunnel



TBM Annie

- Completed 2985 rings
- Constructed 4515m of tunnel



SURFACE WORKS



- Tunnel ring segments delivered to site by barge
- 116 segment barge deliveries avoided 5,500 lorry deliveries
- Excavated material removed from site by barge (over 630,000t)
- So far avoided over 42,000 lorry movements.

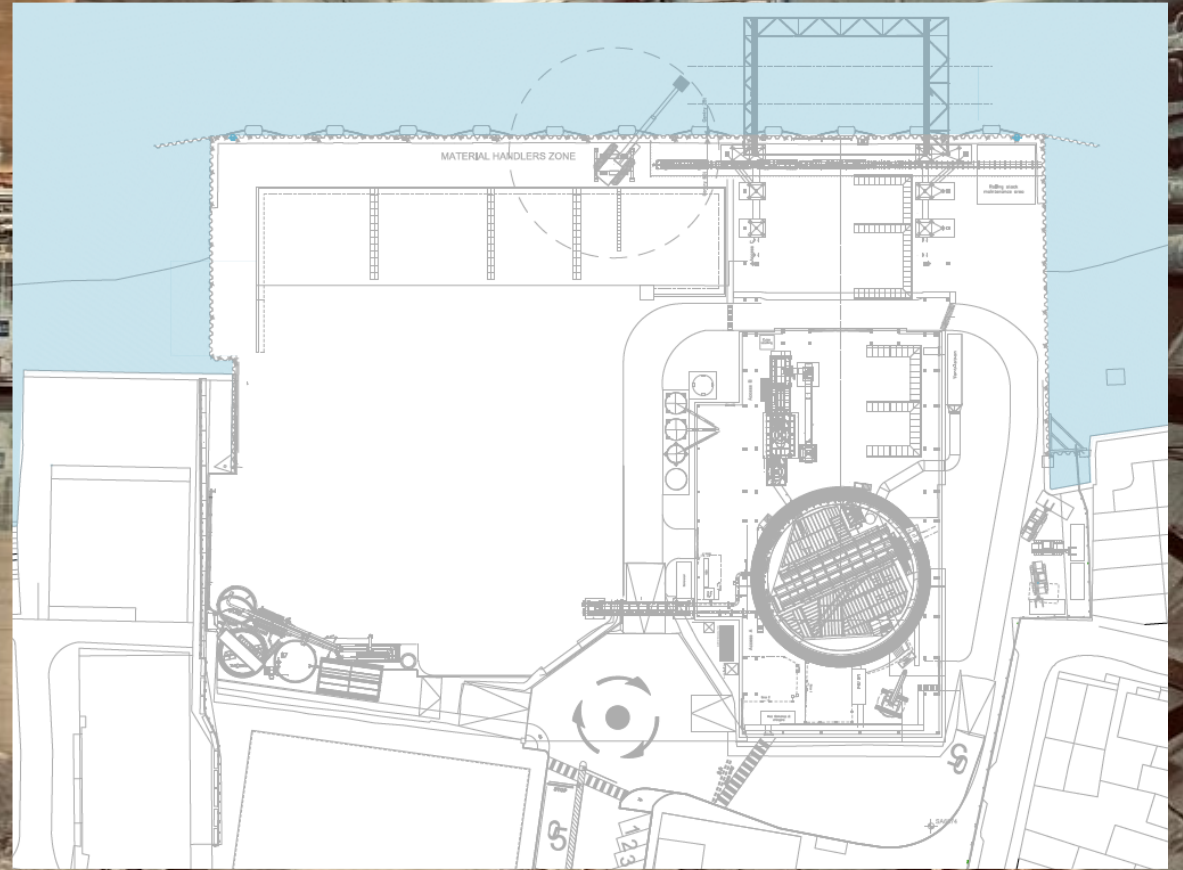
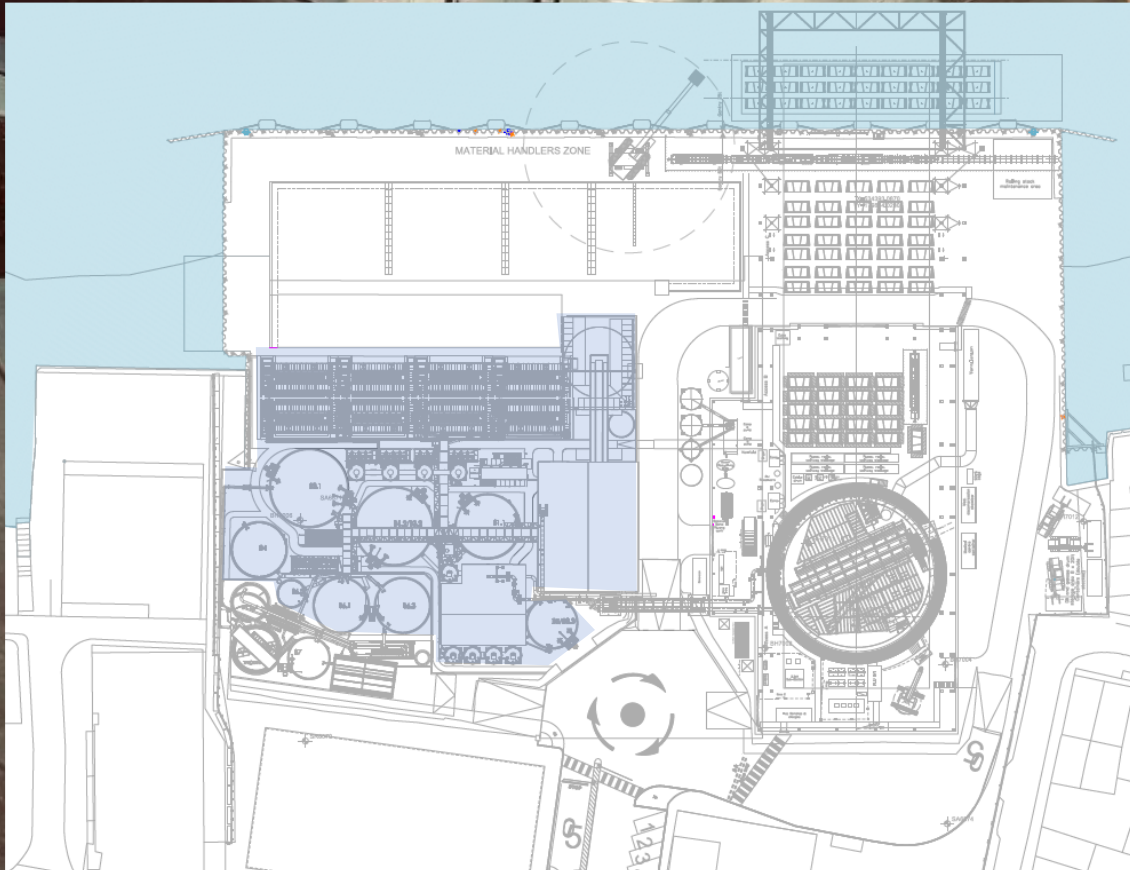


UPCOMING WORK AT CHAMBERS WHARF APRIL 2022 TO DECEMBER 2022

- Arrival of TBM Annie from Greenwich.
- Removal of TBM Annie from shaft and site.
- Completion of main tunnel and completion of muck away and segment delivery activities.
- Removal of main tunnel services not required for secondary lining.
- Dismantling of Slurry Treatment Plant facility and removal from site.
- Launch of main tunnel secondary lining shutter.
- Installation of concrete batching plant for Greenwich connection tunnel secondary lining.



SLURRY TREATMENT PLANT REMOVAL



NOISE AND AIR QUALITY



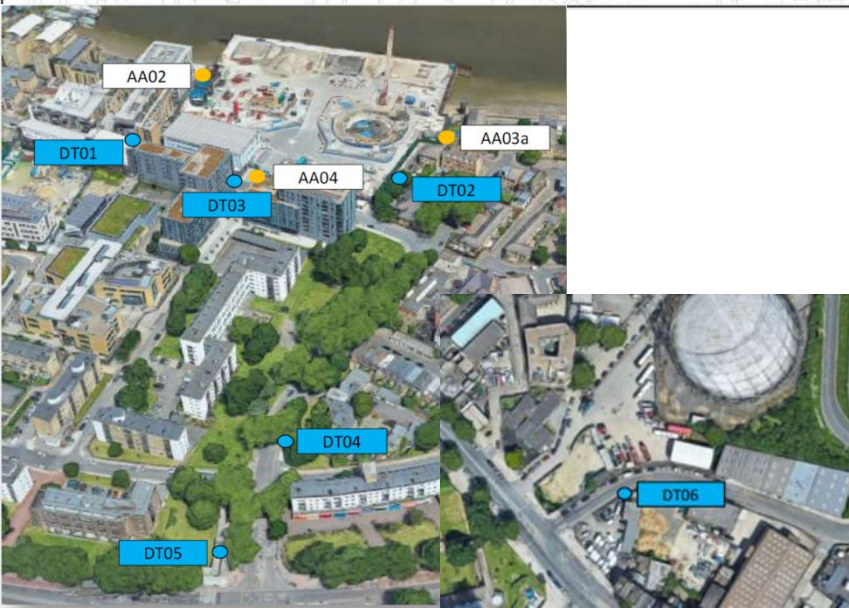
Tideway





Noise Monitoring

- No Section 61 noise exceedances
- No Section 61 noise exceedances in the last 6 months



Air Quality Monitoring

- No air quality exceedances (24h PM10)
- No air quality exceedances in the last 12 months (24h PM10)

SECTION 61 UPDATE



- New Section 61 being drafted and submitted
- London Borough of Southwark are in consultation with Thames Tideway East, Chambers Wharf

COMMISSIONING HIERARCHY

Tideway tunnel

Chambers Wharf site

Other sites

Electrical

Mechanical

Civil

Etc

Lights

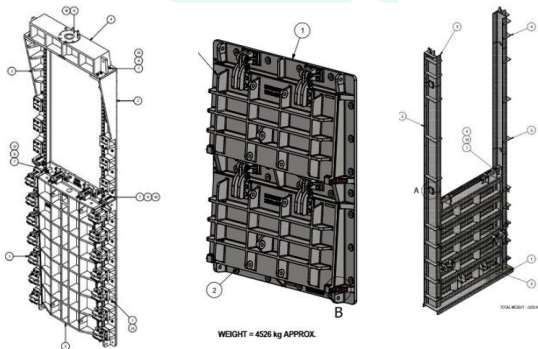
Motors

Penstock

Flap Valve

Secondary Isolation Gates

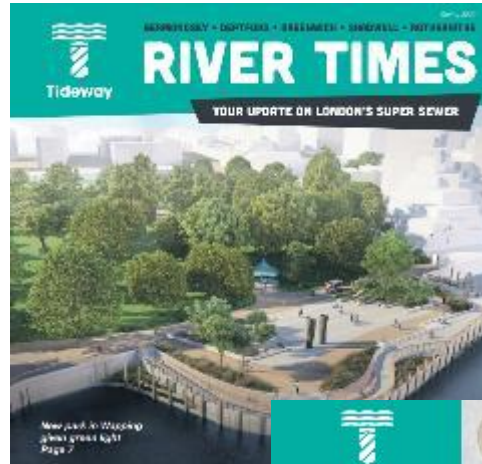
Concrete Structures



COMMUNITY INVESTMENT

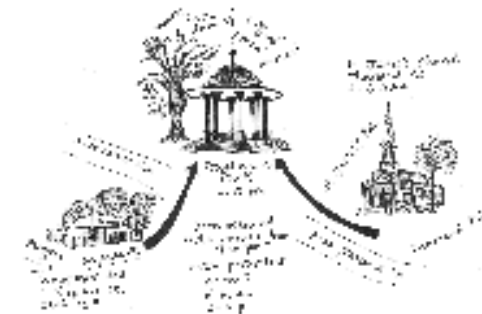


COMMUNITY INVESTMENT AND COMMUNITY RELATIONS



Illuminate Rotherhithe

Tideway's community investment programme helped fund the Illuminate Rotherhithe festival which included nearly 50 free lantern making workshops to local schools, clubs, churches, nature reserves, city farms, community centres and the lantern procession



Science Week

As part of British Science Week 32 five and six year olds from Boutcher Primary School in Bermondsey visited the Cottons Centre to learn about Tideway.

[spring-2022_east_aw_web.pdf \(tideway.london\)](https://www.tideway.london/spring-2022_east_aw_web.pdf)

MITIGATION



Tideway



MITIGATION



If you believe you may be affected by Tideway's construction activities we have mitigation options available.

To make an application to the Independent Compensation Panel (ICP), contact helpdesk@tideway.london to request a copy of the claim form.

Further details about the ICP process, the claim form and help available are available on our website.

<https://www.tideway.london/contact-us/help-advice/compensation-information/independent-compensation-panel/>

CONTACT DETAILS



If you do have any questions or enquiries, please contact the Tideway Helpdesk:

Telephone: 0800 030 80 80

Email: Helpdesk@Tideway.London

CHAMBERS WHARF COMMUNITY PROJECT UPDATES

4 April 2022

Thames Path Landscaping Improvements

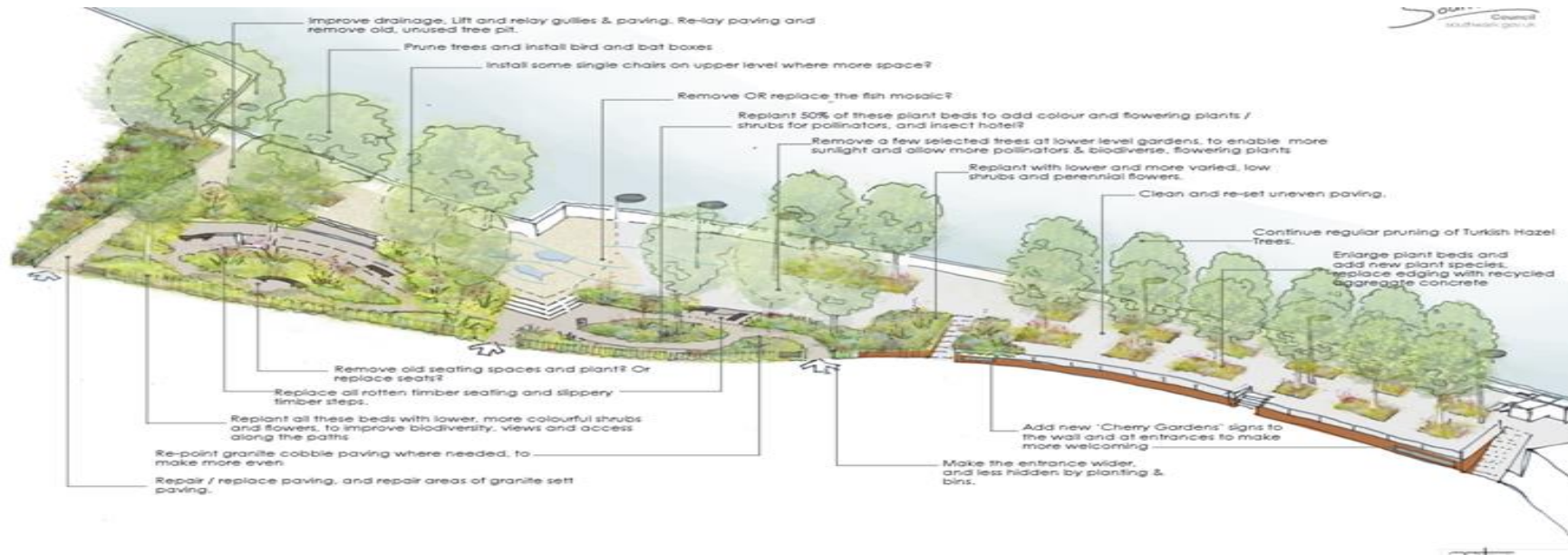
The Thames Path improvements opposite Cherry Gardens is well under way.

The work being done will improve biodiversity, replace worn materials and refresh the area.

People will have better access to the gardens and enjoy the Thames Path with all the benefits of exercise and being outdoors.

This helps reduce levels of depression, anxiety, and fatigue; mitigates air pollution, heat and flooding, and enhances the quality of life for both children and adults.

Thames Path Improvements Illustrative Image

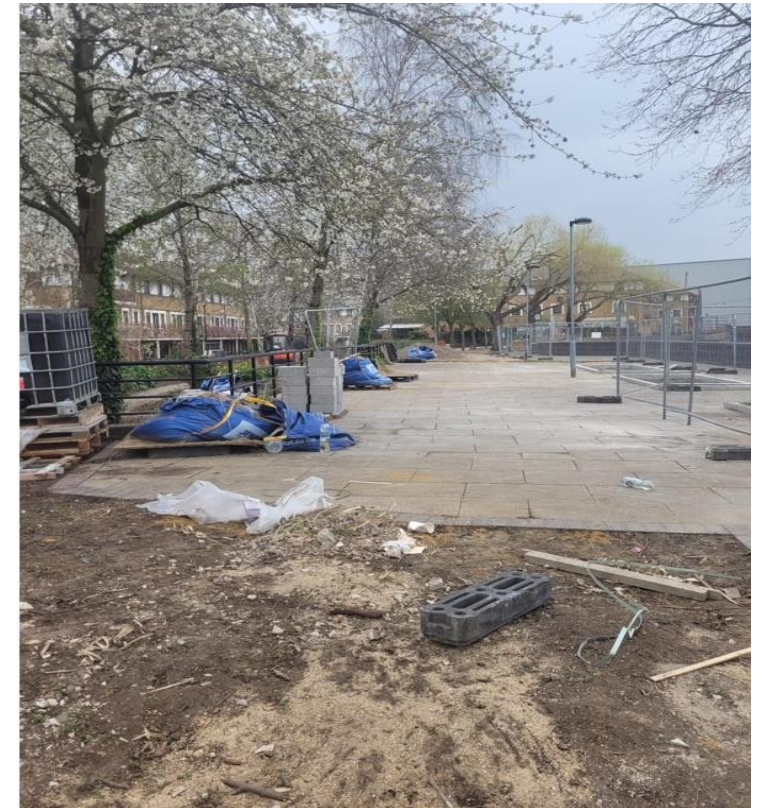


- Replace external seating
- Replace paths re-using materials where possible
- Improve the site's biodiversity value with new planting and improve light
- New Landscaping
- Improved accessibility through the site.
- Replacing the mosaic
- Workshops held in local schools and in the community to replace the fish mosaic.

Thames Path Improvements current site

The contractor carrying out the work is Warwick Landscaping Ltd.

The work started on 17th January 2022 with a projected completion date the end of April 2022 (14-week programme).



George Row Playground Development

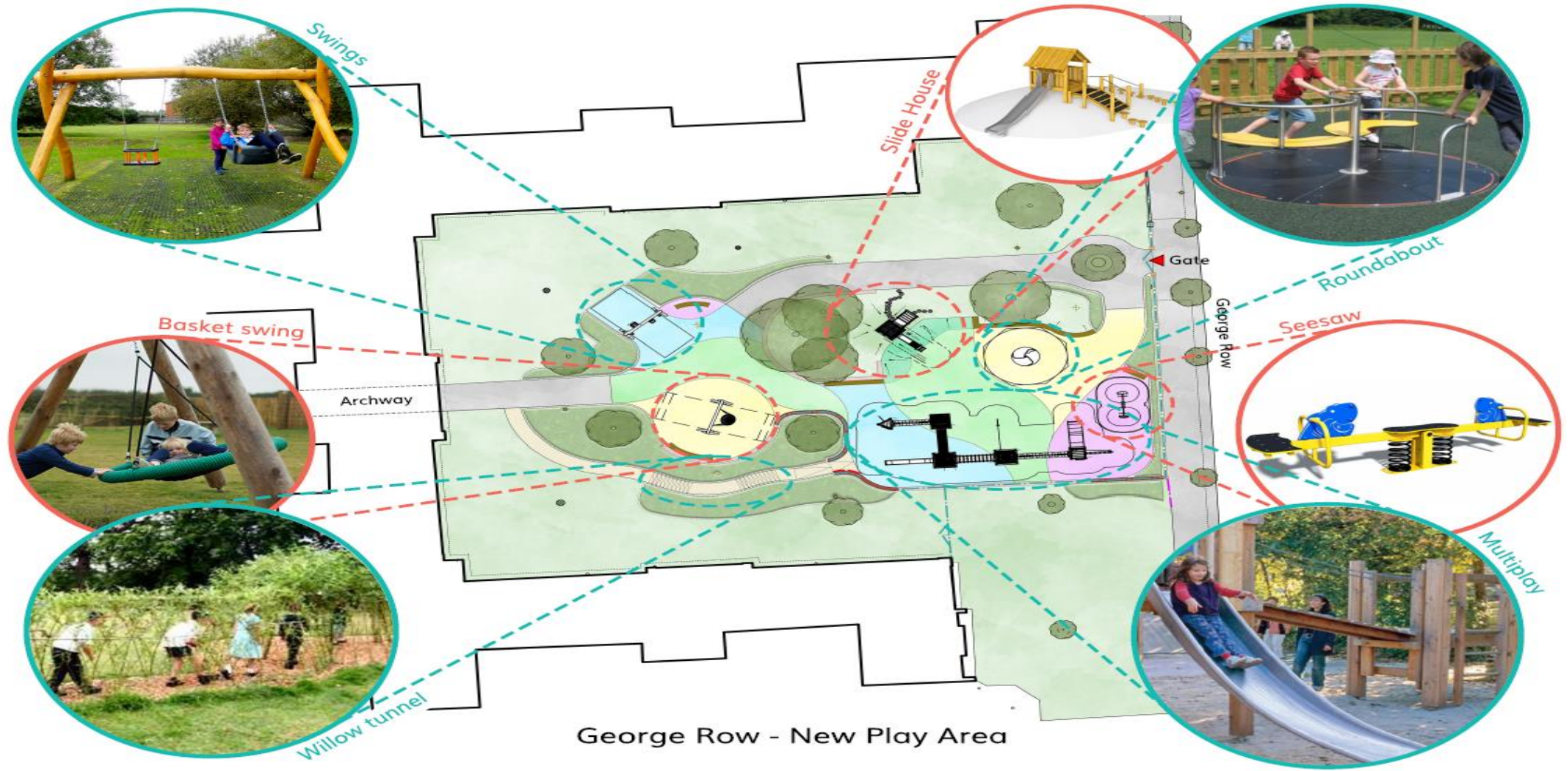
The project construction works involve demolition of the existing ball court and surrounding fencing and walls and creation of a new play area with paths, railings, street furniture and planting.

Southwark Council is now at the stage of appointing a contractor to carry out the development. The construction will take 22 weeks.



Current site

George Row Playground Development



Community Enhancement Fund delayed project

One of the Community Enhancement Fund projects delayed due to Covid restrictions will be starting this month.

This has been tweeted and a banner has been put up in the area.



**FREE
TENNIS
SESSIONS
STARTING
7 APRIL 2022**

**DICKENS ESTATE
SPENLOW MULTI USE GAMES AREA**

- QUALIFIED COACHES LED BY DENIS MCMILLAN
- AGE GROUP: 6-11 YEAR OLDS
- LIMITED PLACES AVAILABLE
- PLACES ALLOCATED ON A FIRST COME FIRST SERVED BASIS

**SESSION TIMES
Thursday 4pm – 5.30pm**

ELIGIBLE ROADS, ESTATES and SCHOOLS:

BEVINGTON STREET	HARTLEY HOUSE
CHAMBERS STREET	JACOBS HOUSE
GEORGE ROW	LUNA HOUSE
CHERRY GARDENS	WRAYBURN
DICKENS ESTATE	RIVERSIDE PRIMARY SCHOOL
FOUNTAIN GREEN	ST. JOSEPH'S RC
SQUARE	PRIMARY SCHOOL

Register your
interest here:



For more information:

Email: denis@poisetennis.co.uk



Communications

Up to 1,969 A5 doubled sided postcards was posted to all the residents that live within the Chambers Wharf Community Enhancement fund area inviting them to get involved.

So far, the feedback received has been positive. Posters will also be place on local noticeboards.



Chambers Wharf Community Enhancement Fund

Do you have an idea for a community project?

Tideway has provided £1m for projects in the Chambers Wharf area.

£328k has been allocated but there is still £672k left to spend.

Your idea should:

- Bring different people together
- Make your neighbourhood come to life
- Build a lasting legacy in the local area
- If you live or work in the Chambers Wharf area above, you can apply

Apply now

The poster features a map of the Chambers Wharf area with street names like Jamaica Road, Chamber Street, and Scott Street. At the bottom, there are illustrations of a person on a bicycle, a person on a bench, a person sitting on the ground, and a person pushing a stroller.



Chambers Wharf Community Enhancement Fund

Types of projects:

- Activities and events for all
- Environmental and greening projects
- Improving local community facilities

Apply now

If residents are interested in attending a walkabout to hear more contact:
Getinvolved@tideway.london for more details

For more information go to
www.southwark.gov.uk/tideway

The poster features an illustration of a person walking a dog. At the bottom, there are illustrations of trees.

The next round of voting for the Community Enhancement fund projects is due to take place in a couple of weeks. The next walk about is due to take place next month.

THANK YOU



Tideway

**Any
Questions?**





Tideway

RECONNECTING LONDON WITH THE RIVER THAMES

#SuperSewer

www.tideway.london