

**DEPTFORD CHURCH STREET
AND GREENWICH PUMPING STATION
COMMUNITY LIAISON WORKING GROUP MEETING**



Tideway



DATE: 06/04/2022

Content

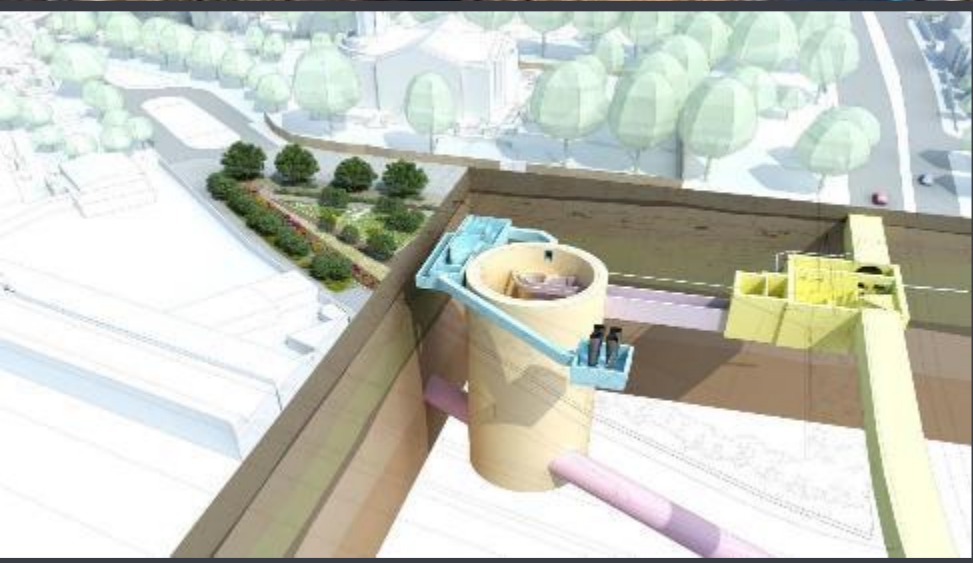
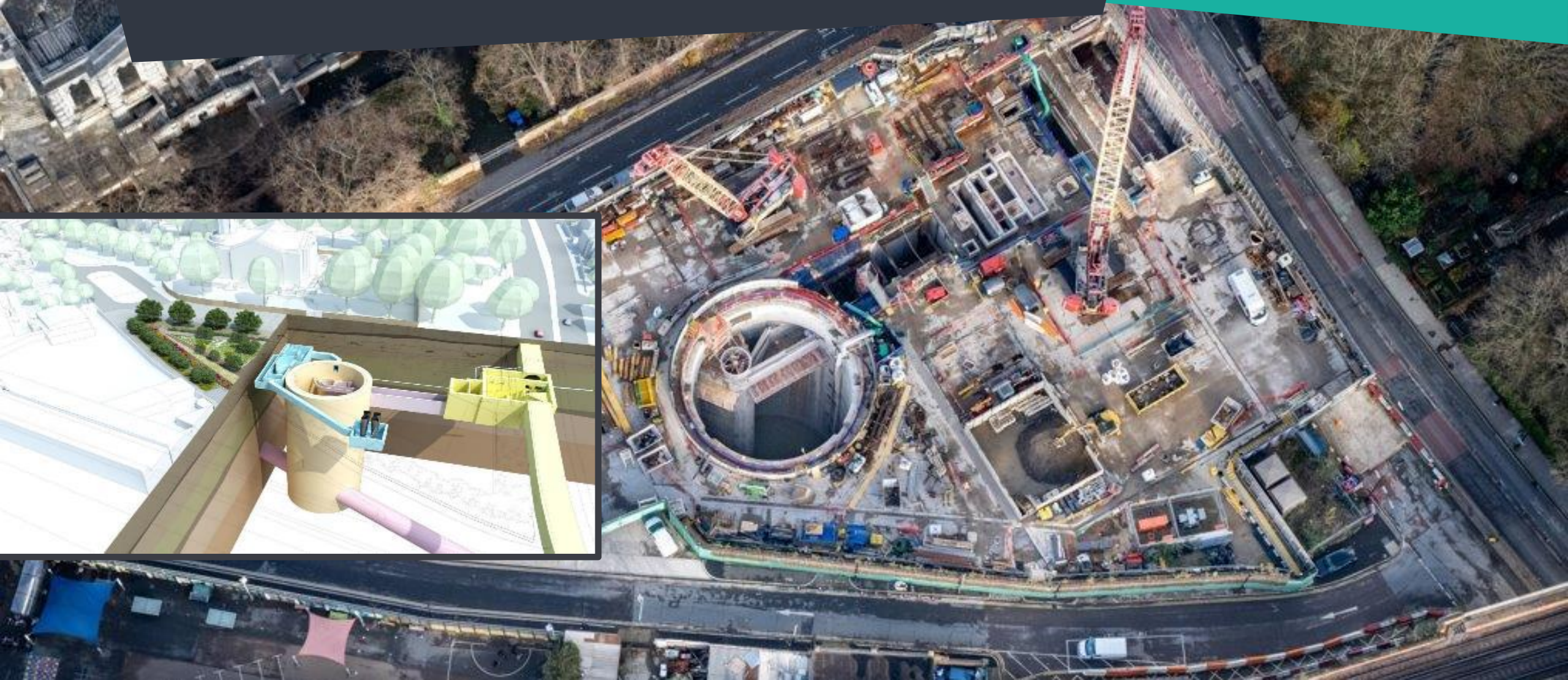
Topic	Lead
Welcome, introductions and overall project overview	Allen Summerskill
<ul style="list-style-type: none">• Planning submission presentation – Deptford Church Street• Construction update – Deptford Church Street• Noise and air quality – Deptford Church Street• Construction update – Greenwich Pumping Station• Noise and air quality – Greenwich Pumping Station• Community Relations• Mitigation	Joe Selwood Audric Rivaud Anna Fish Rob Smith Anna Fish Rebecca Oyibo Emily Black
Actions from previous meeting	Allen Summerskill
Feedback and discussion	All
Any other business	All

PROJECT OVERVIEW



<p>BMB WEST</p>	<p>FLO CENTRAL</p>	<p>CVB EAST</p>	<p>16 Shad Thames Pumping Station 22 Bekesbourne Street 24 Beckton Sewage Treatment Works</p>
<ul style="list-style-type: none"> 1 Acton Storm Tanks 2 Hammersmith Pumping Station 3 Barn Elms 4 Putney Embankment Foreshore 5 Dornay Street 6 King George's Park 7 Carnwath Road Riverside 	<ul style="list-style-type: none"> 8 Falconbrook Pumping Station 9 Cremorne Wharf Depot 10 Chelsea Embankment Foreshore 11 Kirtling Street 12 Heathwall Pumping Station 13 Albert Embankment Foreshore 14 Victoria Embankment Foreshore 15 Blackfriars Bridge Foreshore 	<ul style="list-style-type: none"> 17 Chambers Wharf 18 Earl Pumping Station 19 Deptford Church Street 20 Greenwich Pumping Station 21 King Edward Memorial Park Foreshore 23 Abbey Mills Pumping Station 	<p>MAP KEY</p> <ul style="list-style-type: none"> <li style="width: 50%;">● Main tunnel drive tunnel site <li style="width: 50%;">■ Main tunnel <li style="width: 50%;">● Main tunnel reception site <li style="width: 50%;">⋯ Connection Tunnels <li style="width: 50%;">● CSO site <li style="width: 50%;">— Lee Tunnel <li style="width: 50%;">● Short connection tunnel drive site <li style="width: 50%;">◄ ► Proposed drive direction <li style="width: 50%;">● Long connection tunnel drive site <li style="width: 50%;">● West works site <li style="width: 50%;">○ System modifications <li style="width: 50%;">● Central works sites <li style="width: 50%;">● East works site

DEPTFORD CHURCH STREET





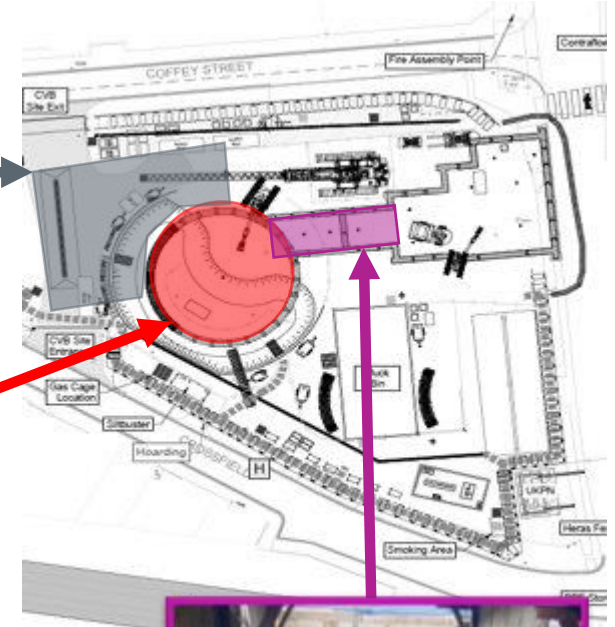
Tideway

DEPTFORD WORKS UPDATE

SHAFT & CULVERT

Air Treatment Chamber (Phase 1)

- Sheetpiles installation complete
- Excavation complete
- Slab construction started
- NEXT: continue with slab/walls/roof



Shaft

- Vortex generator complete
- Walkways on-going
- Pit bottom works restarted
- NEXT: removal of backfill from the shaft



Culvert

- Base slab, walls and roof now complete
- NEXT: safety stack chimney and backfill

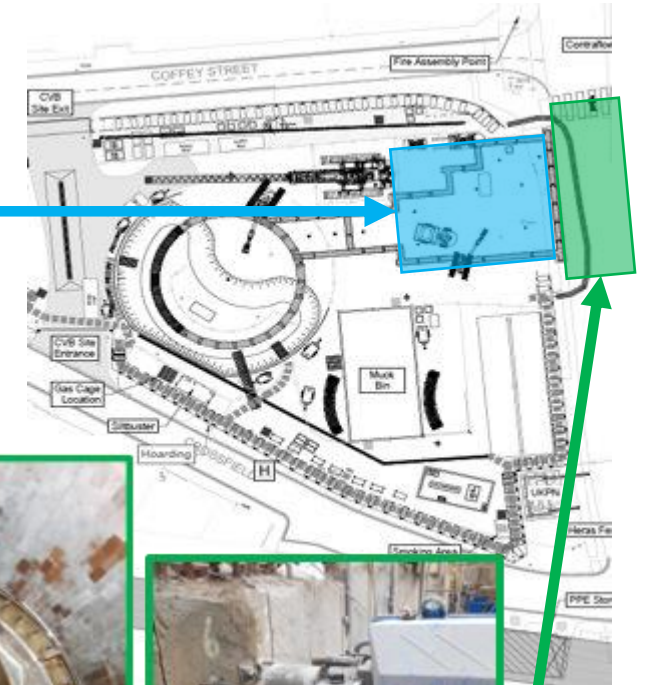


DEPTFORD WORKS UPDATE

COMBINED SEWER OVERFLOW (CSO)

CSO Phase 1: Interception Chamber

- Internal structures complete
- NEXT: testing of mechanical, electrical, instrumentation, control and automation (MEICA) equipment



CSO Phase 2: Sewer connection

- Demolition of roof and eastern wall of sewer complete
- Installation of temporary flume complete
- Demolition of Western sewer wall and opening to CSO phase1 started
- NEXT: demolition completion, flume hanging and connection to CSO phase1



DEPTFORD 12 MONTHS LOOK AHEAD

	2022												2023												2024						
	1	2	3	4	5	6	7	8	9	10	11	12	1	2	3	4	5	6	7	8	9	10	11	12	1	2	3	4	5	6	7
Shaft/culvert civils + MEICA	█			█			█			█			█																		
Tunnel activities from DEPCS					█					█																					
Air Treatment chamber, including mechanical installation	█			█				█		█			█																		
CSO civils, mechanical and electrical	█			█									█																		
Surface works, Landscaping and site reinstatement										█												█									

Overall scheme



NOISE AND AIR QUALITY



Tideway



DEPTFORD CHURCH STREET: ENVIRONMENT



Tideway

Month	Noise	Air Quality
	S61 Exceedances	24h PM10 exceedance
Jul-21	0	0
Aug-21	0	0
Sept-21	0	0
Oct-21	0	0
Nov-21	0	0
Dec-21	0	0
Jan-22	0	0
Feb-22	0	0
Mar-22	0	0

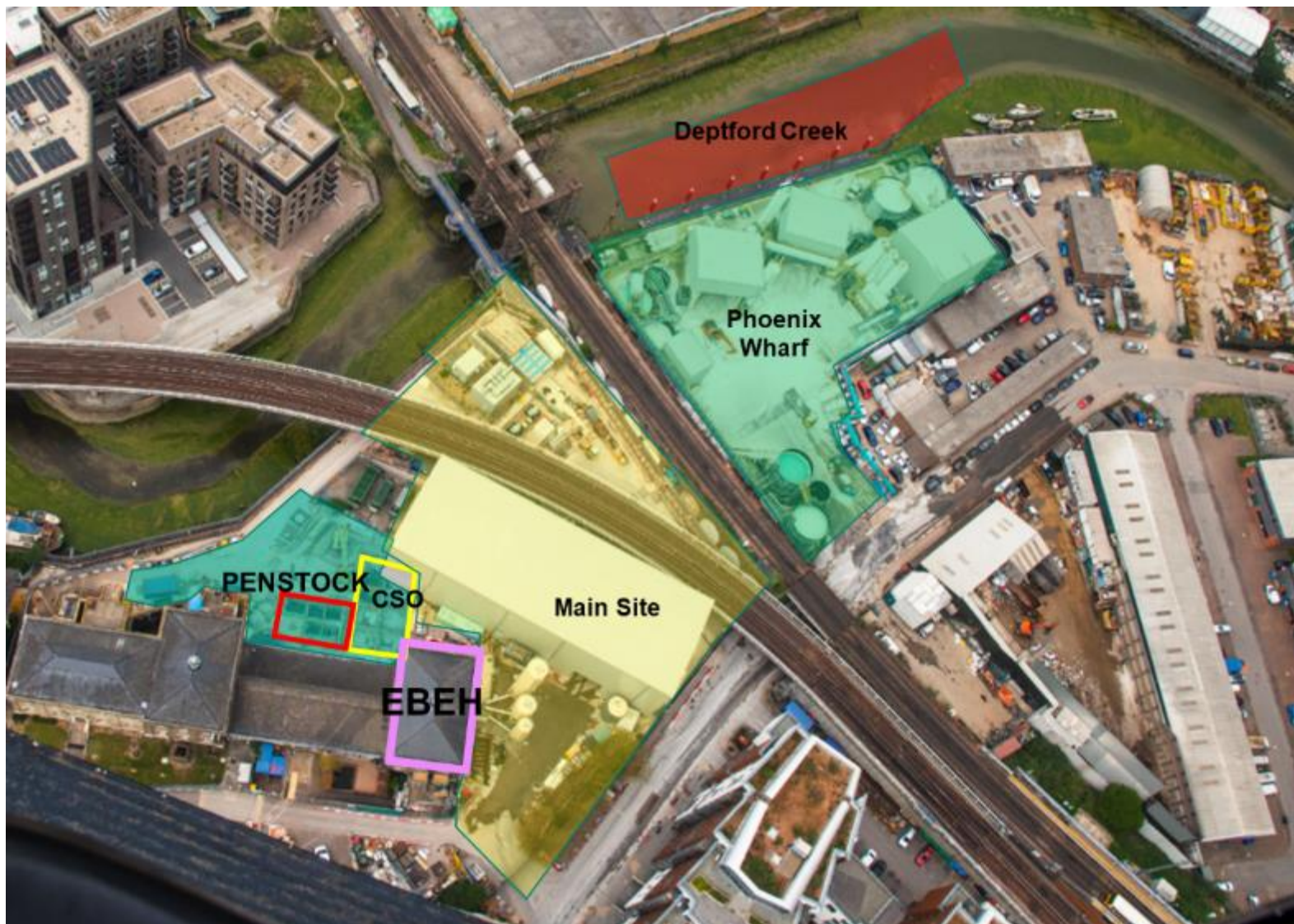
- No noise or air quality exceedances to report

- Site plant and machinery run on hydrotreated vegetable oil (HVO) fuel
- Anti-idling campaign to limit air quality impacts

Content – Greenwich Pumping Station

Topic	Lead
<ul style="list-style-type: none">• Construction update – Greenwich Pumping Station• Noise and air quality – Greenwich Pumping Station• Community Relations• Mitigation	Rob Smith Anna Fish Rebecca Oyibo Emily Black
Actions from previous meeting	Allen Summerskill
Feedback and discussion	All
Any other business	All

GREENWICH PUMPING STATION



GREENWICH WORKS UPDATE



Main Site & Shaft

- Tunnelling has continued to Ring 3043
- Greenwich connection tunnel drive completed on April 5th 2022
- Commenced tunnel strip and clean (removal of slurry pipework and pumps)

Combined Sewer Outfall (CSO)

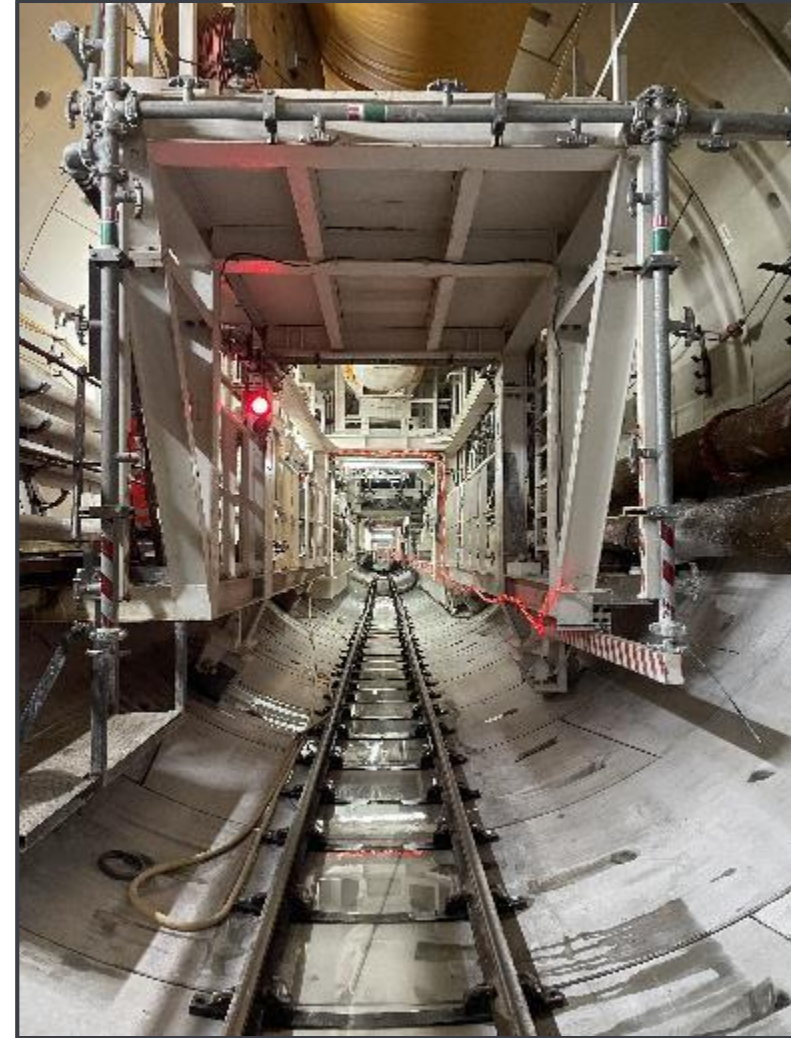
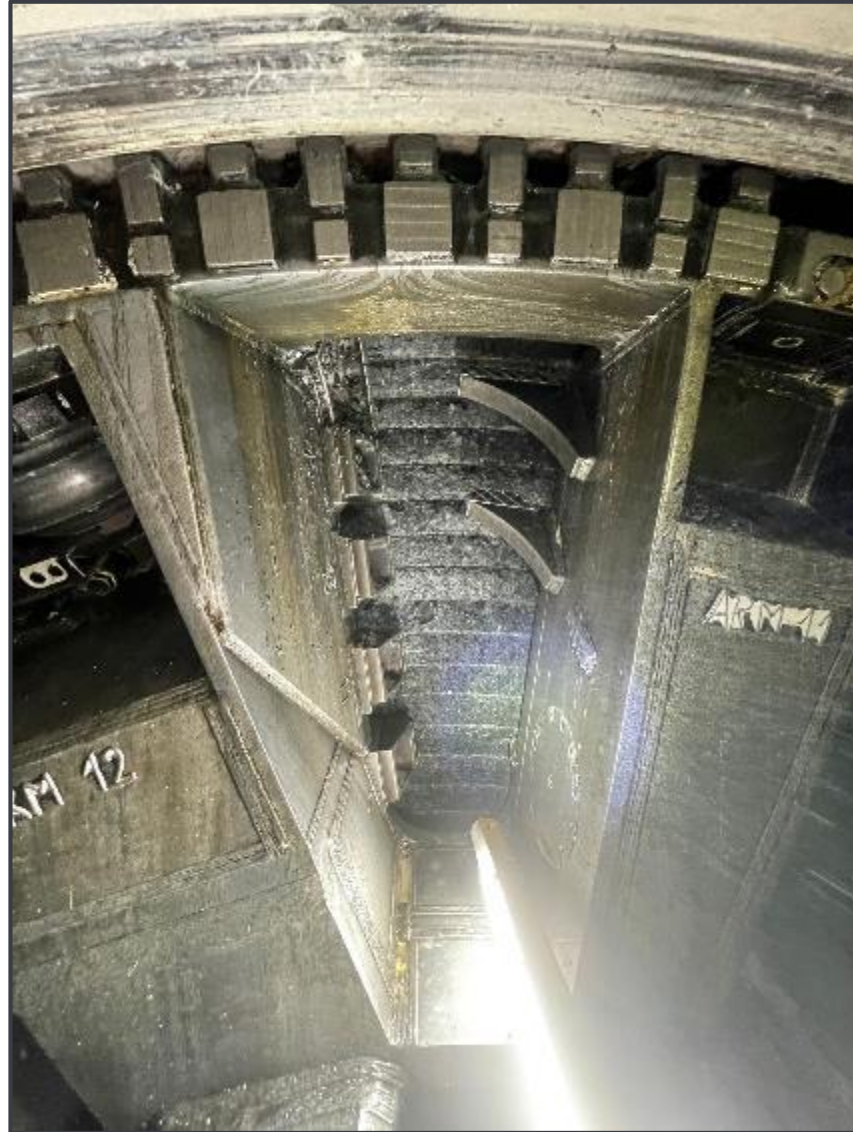
- Demolition of 120 year old brickwork live sewer while maintaining flow into a temporary flume installed last year
- Suspension of live sewer
- Completion of excavation
- Start of base slab

East Beam Engine House

- Remove historical slab & completion of backfilling of historical ground
- Pouring of a permanent spanned reinforced concrete slab – 50% done (2 bays out of 4)



IN THE TUNNEL & TUNNEL BORING MACHINE



PHOENIX WHARF

Muck Away

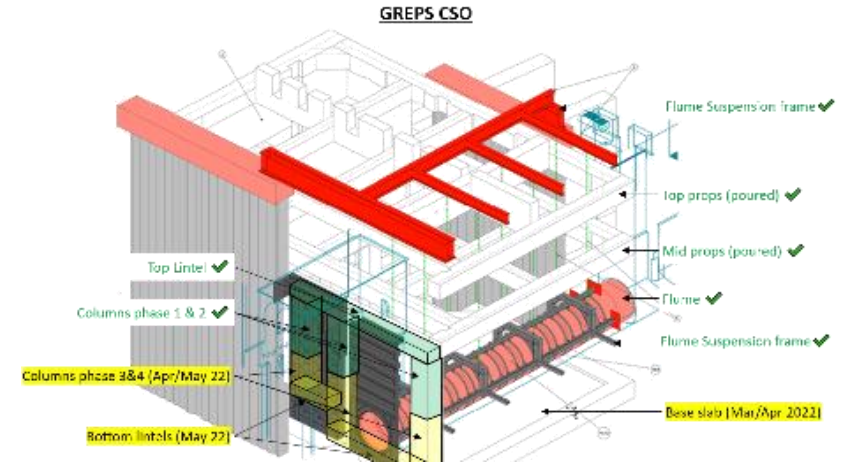
Road – 161,347 tonnes (59%)

River – 110,096 tonnes (41%)

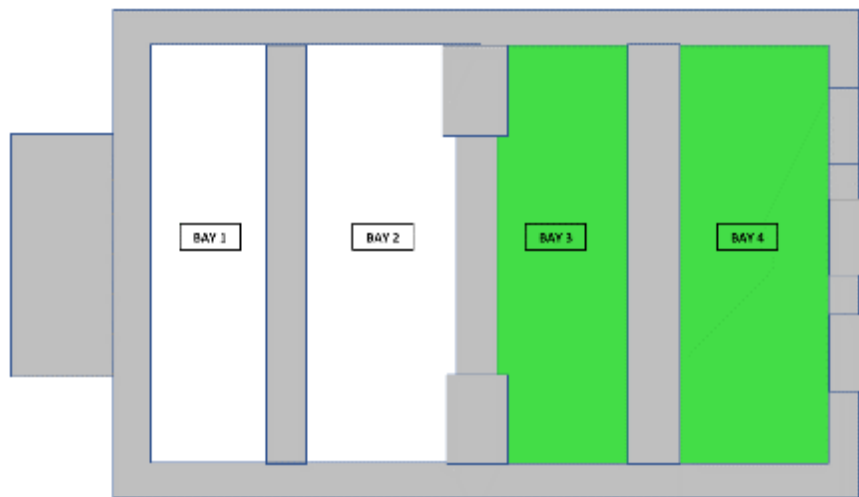
TOTAL – 271,443 tonnes



COMBINED SEWER OVERFLOW



EAST BEAM ENGINE HOUSE



Tunnelling

- TBM Annie completed her journey from Greenwich to Chambers Wharf on April 5th 2022
- Tunnel strip out and first clean
- Slurry treatment plant strip down and demobilisation, remove civils elements and hand over
- Secondary lining preparation, shutter delivery and launch

Combined Sewer Overflow (CSO)

- Construct base slab
- Remove temporary props
- Finish permanent concrete portal between CSO (permanent work) and existing penstock chamber (120 years old)
- Construct permanent lining walls

East Beam Engine House

- Excavation of MEICA* pit in Northeast corner (~3.5m deep)
- Installation of MEICA air duct & backfill
- Complete pouring of new permanent spanned slab

***Mechanical, Electrical, Instrumentation, Control and Automation** – the mechanics that will finally operate Tideway

TUNNEL STRIP AND CLEAN



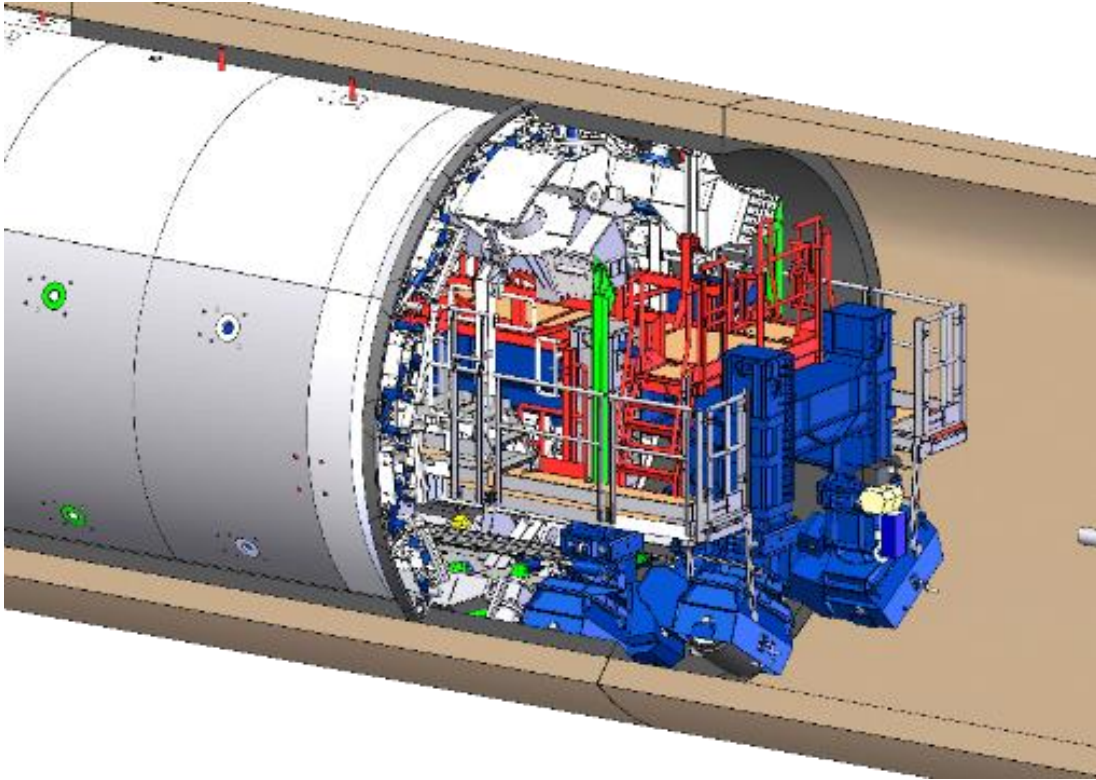
- Removal of grout batching plant
- Removal of surface air compressors
- Removal of water-cooling equipment
- Removal of mechanical and electrical workshops
- Removal of surface vent fan
- Removal of slurry pipework from tunnel
- Removal of 4 slurry boost pumps from tunnel
- Removal of services and rail between Greenwich and Deptford

PHOENIX WHARF – DEMOB



- Removal of the muck handling plant
- Dismantle and removal of acoustic sheds over the plant
- Strip and clean of the plant – returning to supplier in France
- Removal of tanks
- Removal of pipe brackets and pipework
- Removal of culvert and ramp
- Removal of temporary foundations

SECONDARY LINING



- 6 drum shutters for secondary lining are being manufactured in Slovenia
- They will be delivered into Greenwich site and assembled in the shaft
- They will be launched one at a time from Greenwich on their journey to Chambers Wharf

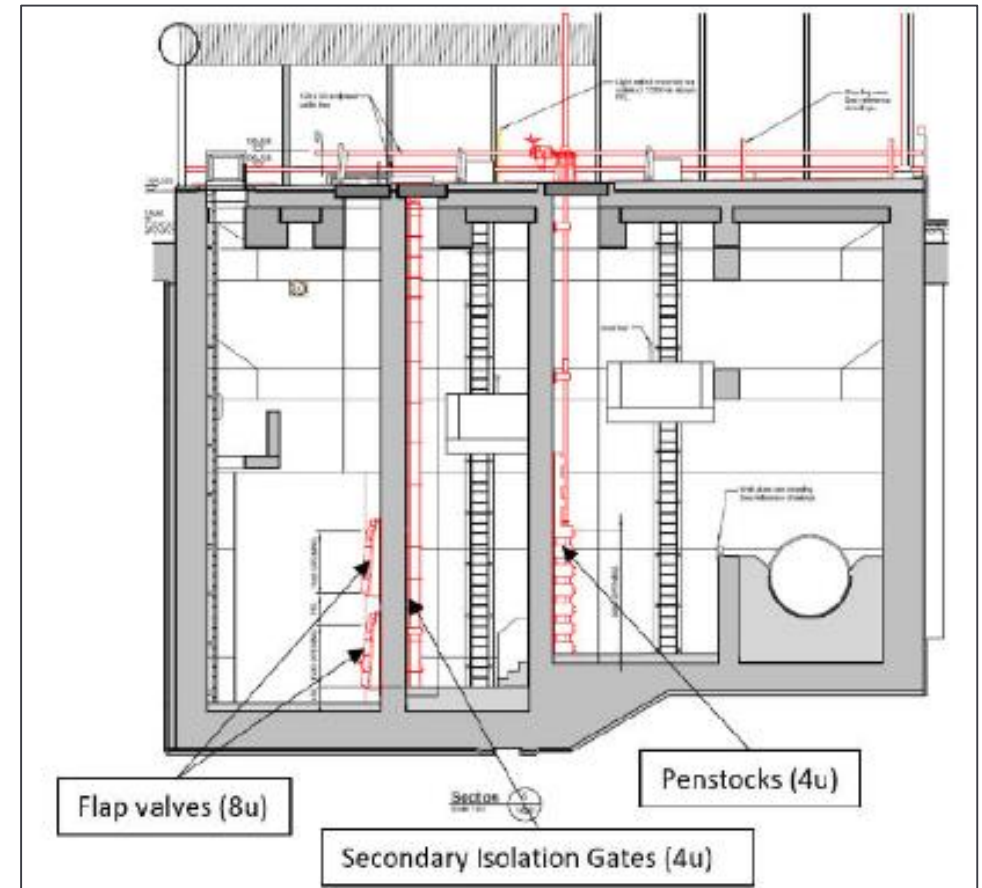
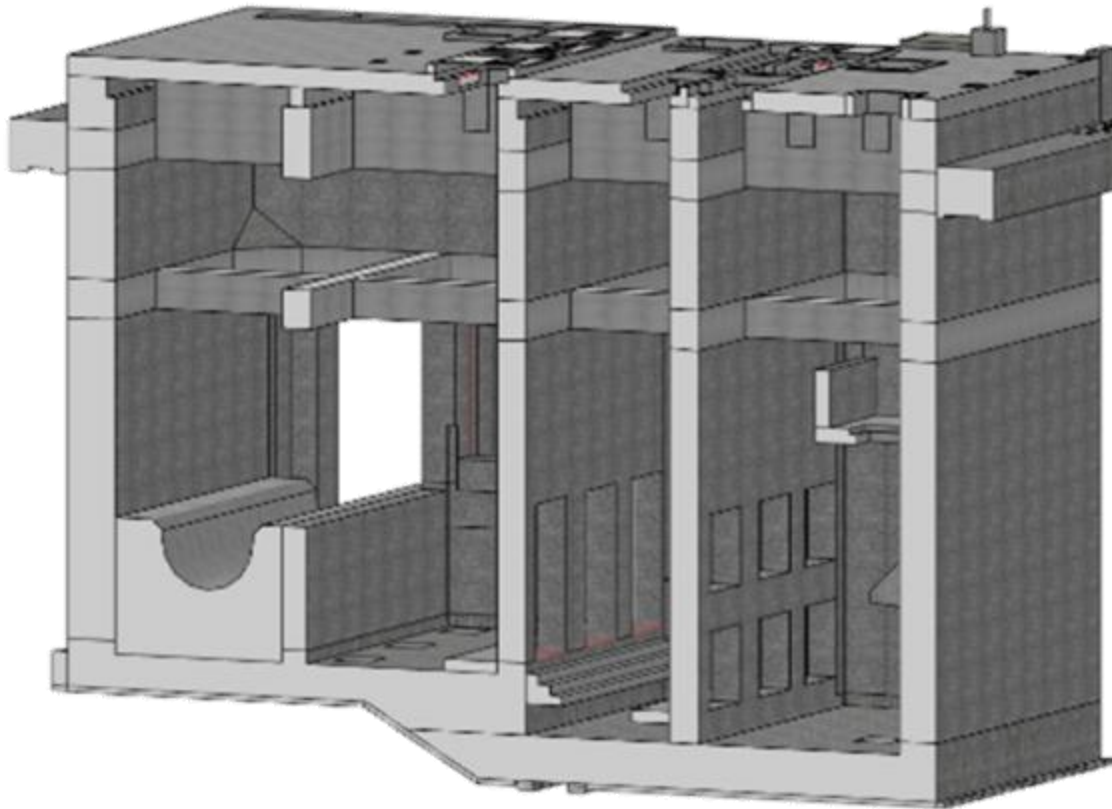
NORMAN ROAD - CLOSURE



- Norman Road Vehicle Holding Area (VHA) will remain in place until 22nd September 2022
- During dismantling of equipment, vehicles will use this holding area to park – limited space on site to hold vehicles while dismantling
- Road closure needed to facilitate delivery of the secondary lining shutters (abnormal load deliveries)

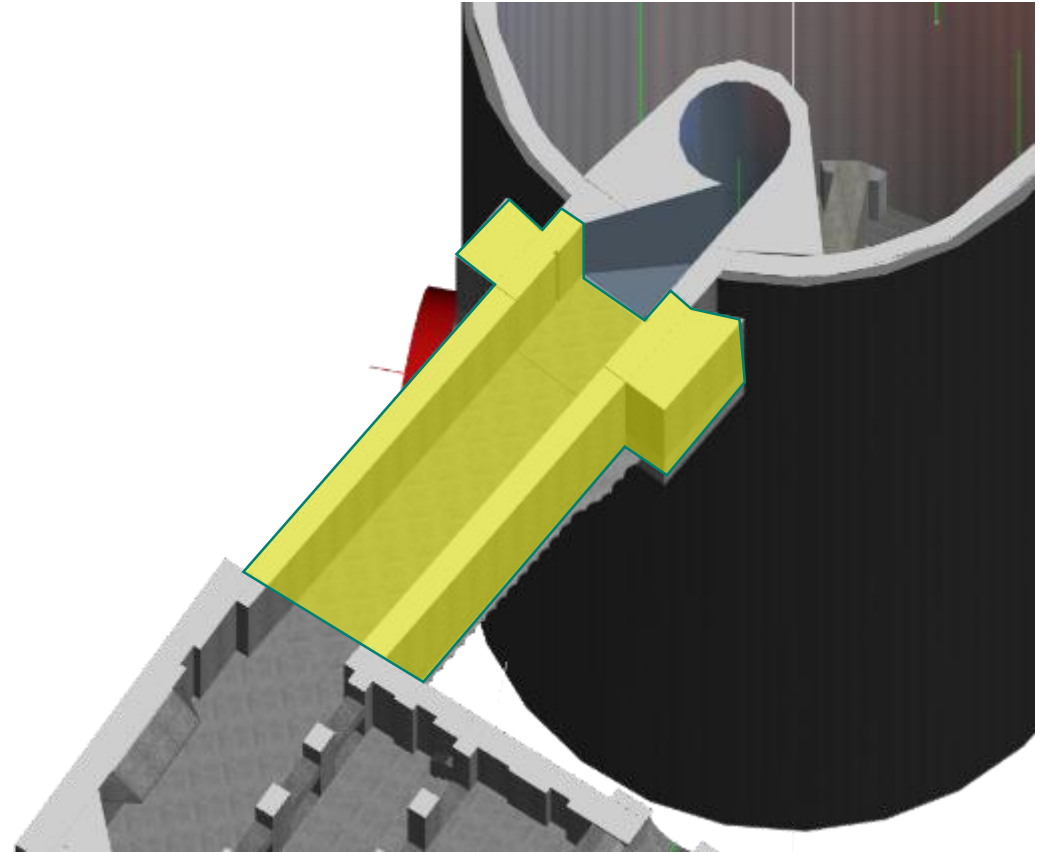
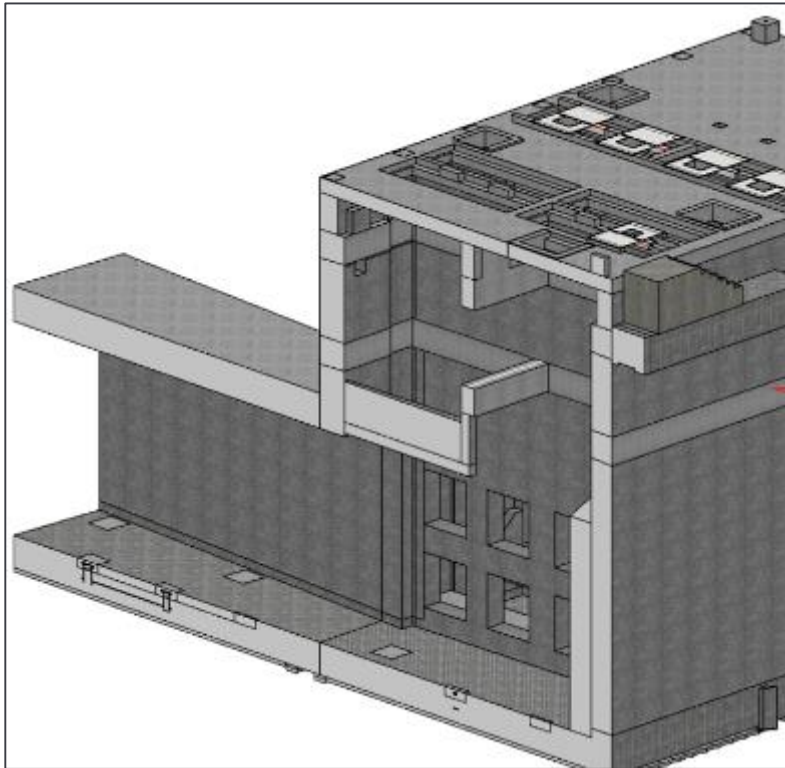
MAIN SITE – COMBINED SEWER OVERFLOW

CSO = Underground Interception Chamber, 20m x 10m x 12m deep.
Remaining works = heavy civils



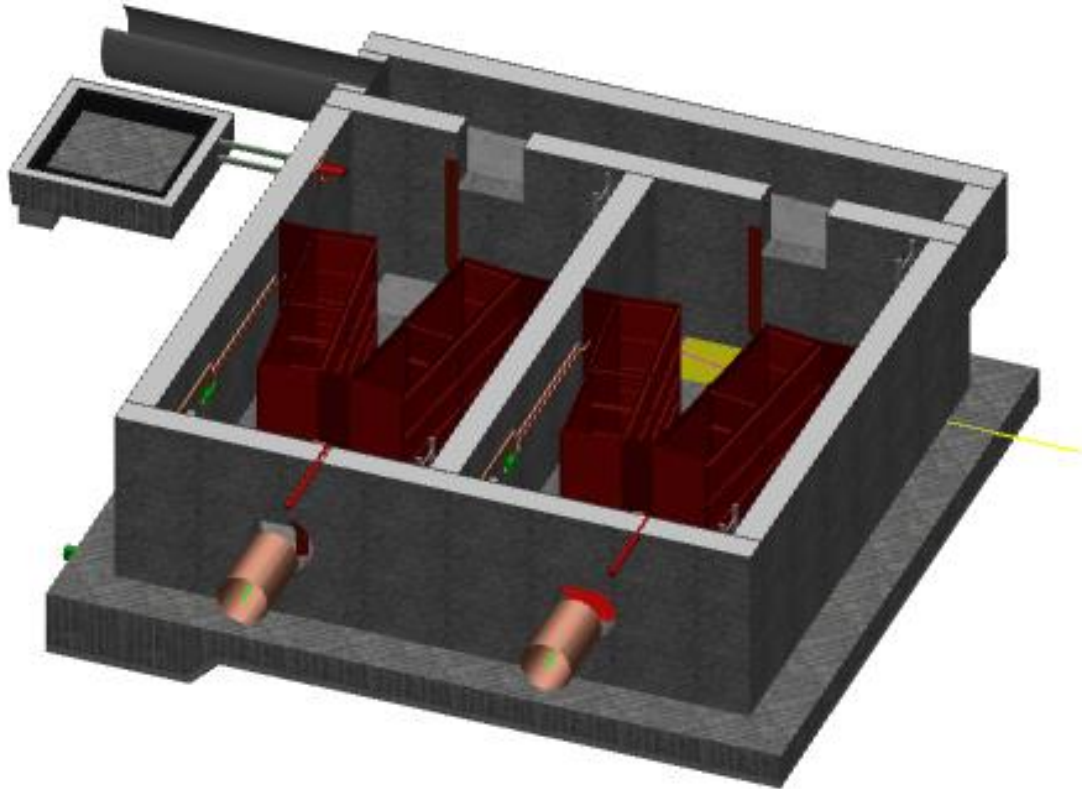
MAIN SITE - CULVERT

Cut & cover underground structure, 15m long, 5m wide, 12m deep - located under acoustic shed
Remaining works = excavation & heavy civils



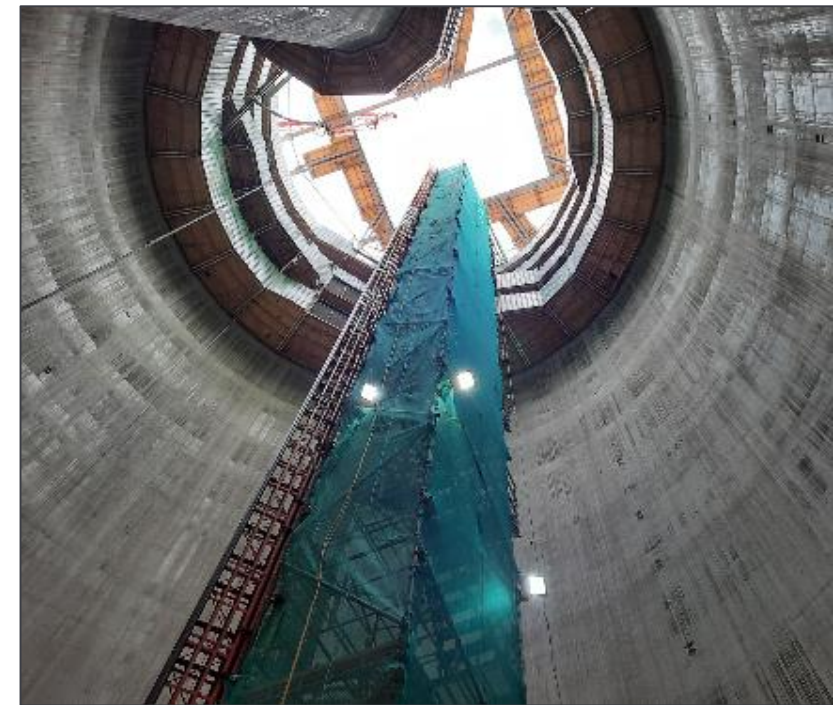
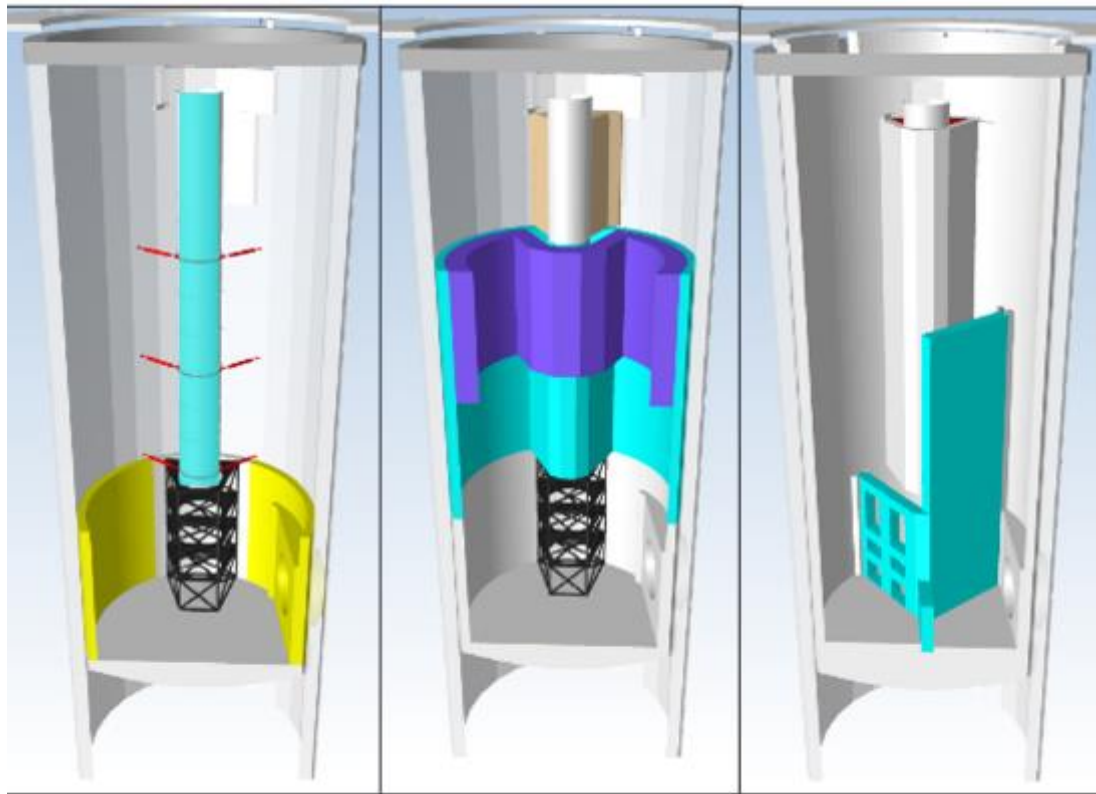
MAIN SITE – AIR TREATMENT CHAMBER

ATC = Air Treatment Chamber, underground structure excavated within a cofferdam
Remaining works = Sheet piling, excavation & heavy civils



MAIN SITE – SHAFT WORKS

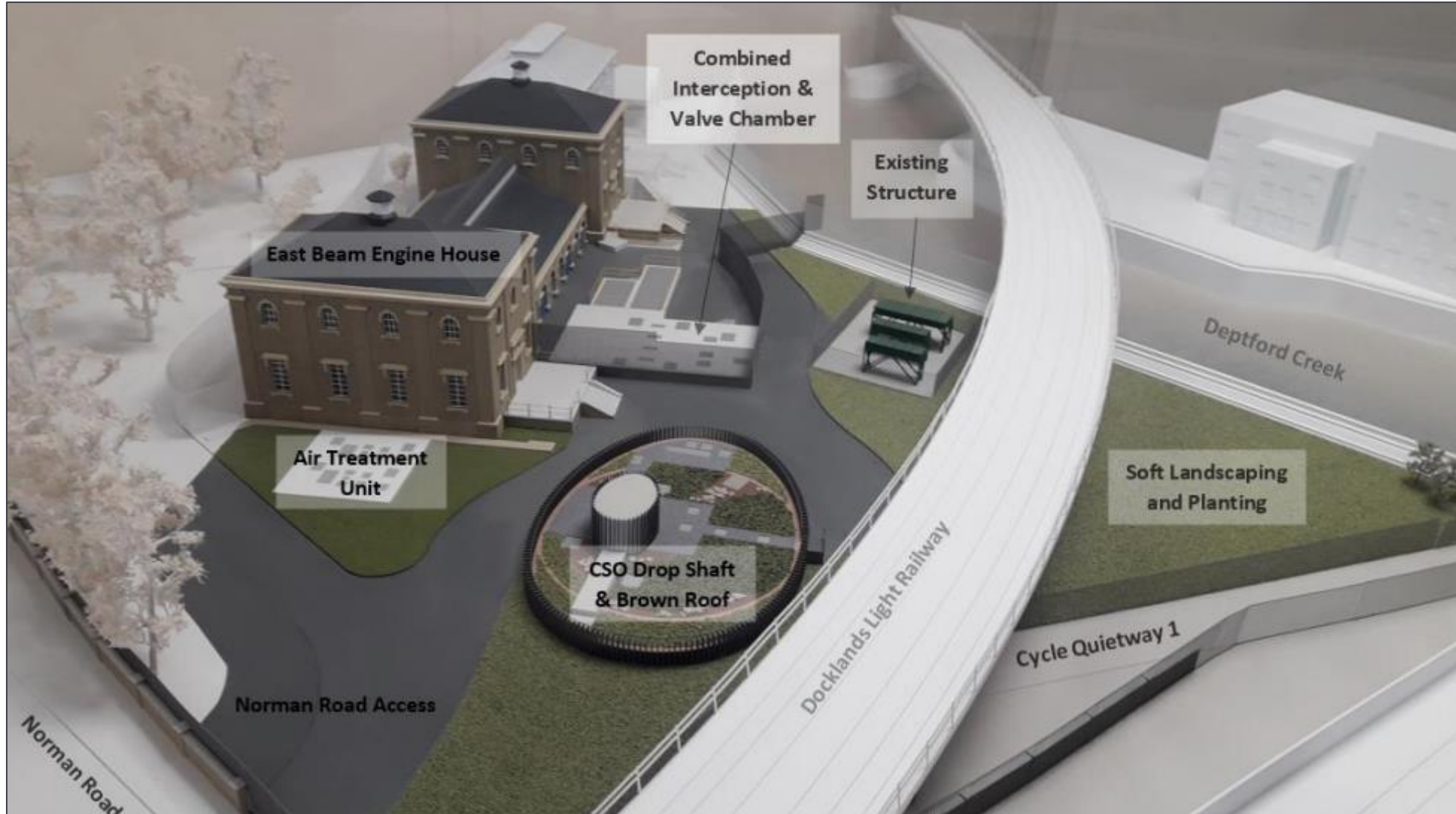
Remaining works = Stainless steel vortex installation, secondary lining, internal walls, shaft cover slab,





Tideway

MAIN SITE – LANDSCAPING



NOISE AND AIR QUALITY



Tideway



GREENWICH PUMPING STATION: ENVIRONMENT



Month	Noise	Air Quality
	S61 Exceedances	24h PM10 exceedance
Jul-21	1	0
Aug-21	2	0
Sept-21	0	0
Oct-21	0	0
Nov-21	0	0
Dec-21	0	0
Jan-22	0	0
Feb-22		
Mar-22		

- Site plant and machinery run on hydrotreated vegetable oil (HVO) biofuel
- Anti-idling campaign to limit air quality impacts

More by River:

- Target 30% waste removed by barge, achieved 40.5% (up to 24/03)
- Removed 6860 wagons from the road, reducing noise and air quality impacts and reducing congestion

- July 21 exceedance due to demolition works overrunning into extended hours on a Saturday after 1pm
- Aug 21 exceedance due to a pipe being disconnected at Phoenix Wharf.

COMMUNITY RELATIONS



As part of British Science Week a group of 32 five and six year olds visited the Cottons Centre to learn about Tideway.

Tideway volunteers spoke to the group about our five senses and asked the children what they thought they would hear when standing next to the River Thames. This was followed with an outdoor exercise near the river to help them really engage with their surroundings and to make a pledge to improve their school environment and make it greener.



[spring-2022_east_aw_web.pdf \(tideway.london\)](https://www.tideway.london/spring-2022_east_aw_web.pdf)

Illuminate Rotherhithe is a free annual festival inspired by the history of the Thames, docks, migration and the sailing of the Mayflower – an English ship that transported the first English Puritans, known today as the Pilgrims, to the New World (America) in 1620



Tideway's community investment programme helped fund this year's festival which included nearly 50 free lantern making workshops to local schools, clubs, churches, nature reserves, city farms, community centres and the lantern procession

MITIGATION



Tideway



MITIGATION - making a claim if affected by Tideway's work



Who do I go to for advice?

For personal assistance contact our Helpdesk: 08000 30 80 80 or helpdesk@tideway.london

For independent advice contact Independent Advisory Service (IAS) Helpline: 0800 917 8845 or info@tidewayias.co.uk

How do I submit my claim?

The Helpdesk can submit your claim to the Independent Compensation Panel (ICP) on your behalf, or you can submit your claim direct to the ICP: admin@tidewayicp.london

You can download the claim form from the Tideway website:

www.tideway.london/help-advice/compensation-information/Independent-Compensation-Panel

CONTACT DETAILS



- If you do have any questions or enquiries, please contact the Tideway Helpdesk:
- Telephone: **0800 030 80 80**
- Email: **Helpdesk@Tideway.London**

THANK YOU



Tideway

Any questions?





Tideway

RECONNECTING LONDON WITH THE RIVER THAMES

#SuperSewer

www.tideway.london