

# KING EDWARD MEMORIAL PARK FORESHORE

Community Liaison Working Group



Tideway



22 June 2022

# AGENDA

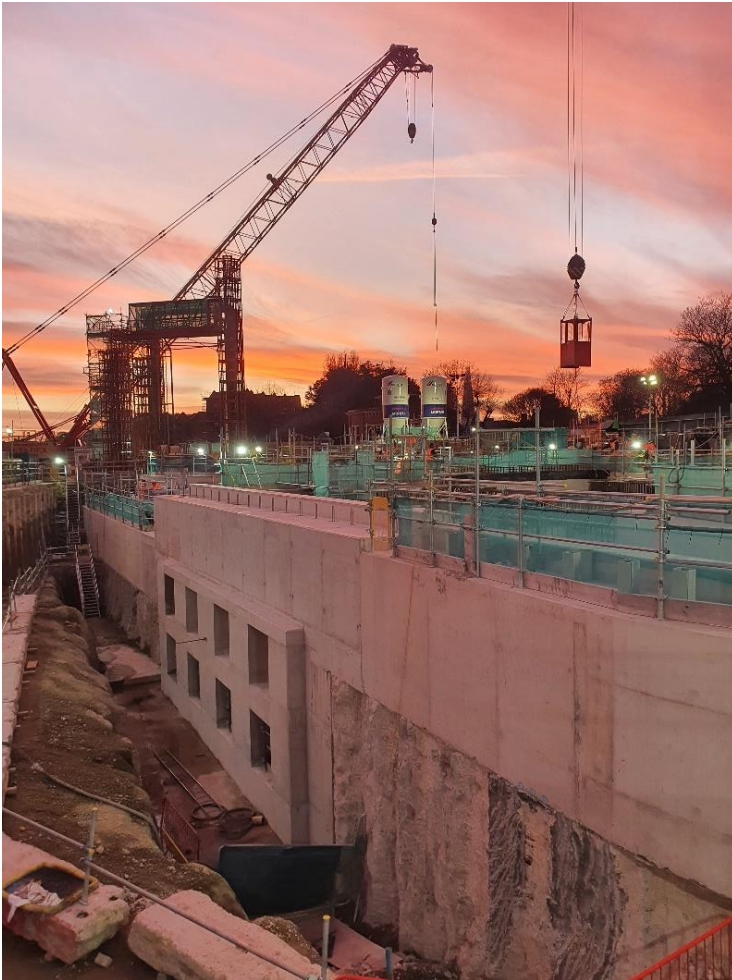
Topic	Lead
Welcome, introductions and overall project overview	Martin Griffiths
<ul style="list-style-type: none"><li>• Construction update and programme of future work</li><li>• Environment – noise and air quality and Section 61 update</li><li>• King Edward Memorial Park Foreshore planning application update</li><li>• Community investment</li><li>• Mitigation and compensation</li></ul>	Toby Cuthbert Mikaela Weyer Toby Cuthbert Martin Griffiths Emily Black
Any other business	All
Meeting close	All



# CONSTRUCTION UPDATE

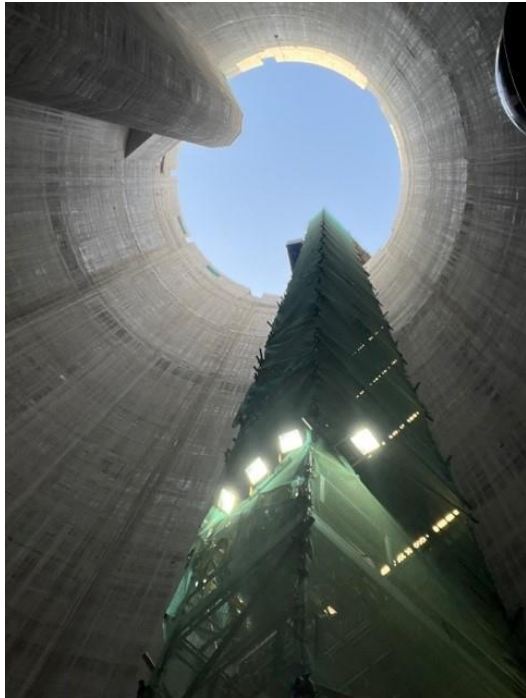


Tideway





# SITE UPDATE & SHAFT SECONDARY LINING



## December 2021

- Secondary lining of the shaft completed using the Slipform methodology.



## January 2022

- Commencing sprayed concrete lining adit tunnel excavation to connect the shaft to the main tunnel.
- Works taking place on a 24 hour shift pattern.



## February 2022

- Continuing the sprayed concrete lining excavation, however the tunnel work had to be stopped by the end of the month due to the need to install additional temporary works.

# SITE UPDATE & SHAFT SECONDARY LINING



## March 2022

- Resequencing of the works in the shaft to complete shaft internals.



## April 2022

- Construction of the shaft and internal walls at the bottom of the pit.



## May 2022

- Completion of shaft and internal walls and starting mass fill concrete pours in the base slab.
- Secondary lining of first stage of adit connection tunnel.



# SHAFT - VORTEX TUBE INSTALLATION



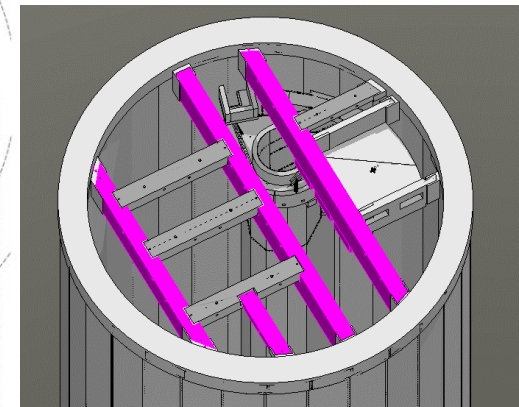
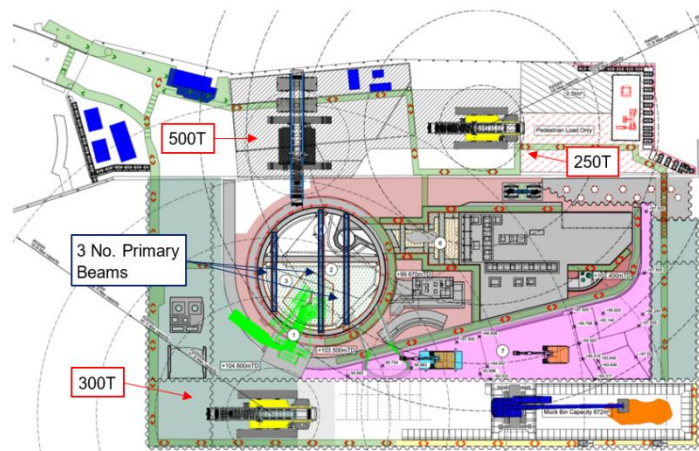
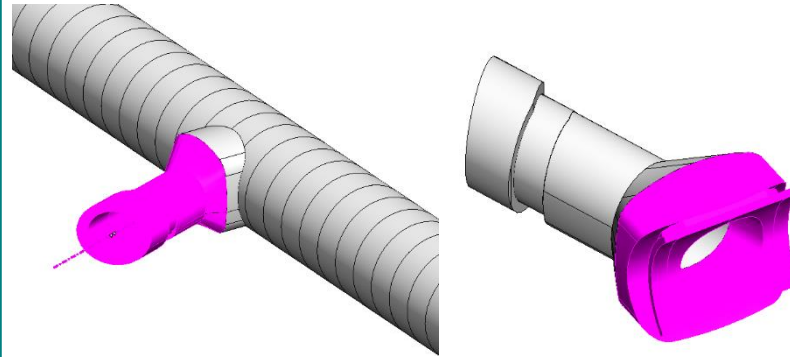
**June 2022**

- Completing first stage of secondary lining of the adit tunnel, ready for re-start.

**Future Works – 6 months**

- Finish off the adit excavation.

- Complete shaft upper and lower internals.
- Install roof slab in order to start landscaping works at the platform level.



# COMBINED SEWER OVERFLOW (CSO)



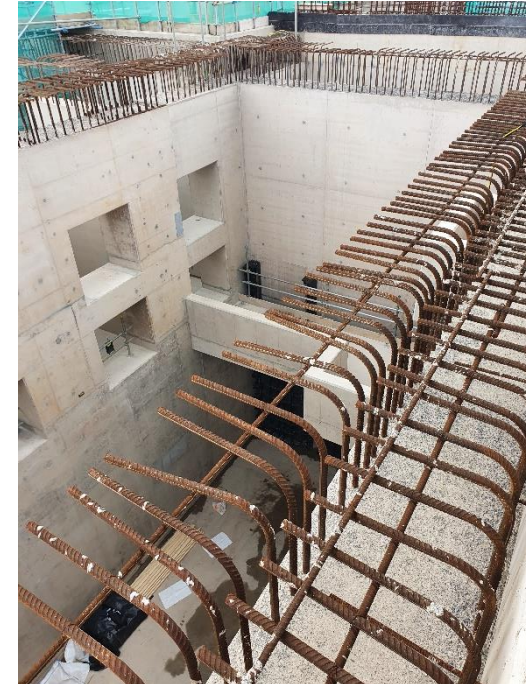
## December 2022

- Working on internal walls and structures in the connection chambers (CSO)



## January 2022

- Complete internal walls and primary structures of Phase 1 CSO (main eastern section).

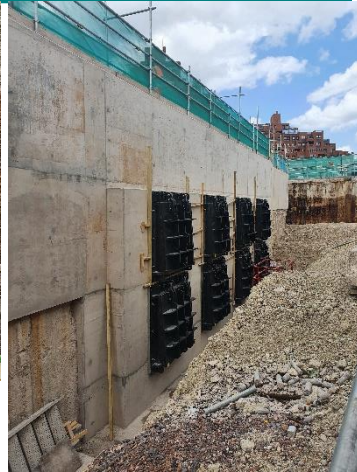


## February 2022

- Construct access platforms, topping slabs and minor structures in the CSO Phase 1.



# CSO WORKS



## March to June 2022

### Installation of MEICA – Phase 1

- Install Flap Valves to Outer Flap Valve Wall.
- Install Penstocks to Penstock wall.
- Construct culvert connection from CSO to Shaft
- Construct CSO Roof Slab

## Upcoming Works –

### 6 months

- Complete CSO roof slab
- Complete CSO internal and connection structures
- Excavation of the remaining hinterland internal cofferdam area.
- Riverwall cladding precast installation.
- Complete MEICA install.





# PROGRESS UPDATE COMBINED SEWER OVERFLOW CSO

## Excavation & Backfilling

Excavation to commence in July for removing the remaining cofferdam fill in front of the permanent works.

## Overflow Chamber

Installation of flap valves to the outer flap valve wall. Precast cladding install to start in October.



## Shaft

Ongoing works inside the shaft for the adit and upper and lower internals, roof slab to go on in November.

## CSO Connection

Vortex generator construction and CSO connection works to be completed over the next few months. Some night shift work will be required on the vortex generator at the same time as the Adit 24 shift pattern work.

## Lower & Valve Interception Chamber

Roof slab construction ongoing, next six months will focus on completing internal structures and MEICA\*.

\*Mechanical, electrical, instrumentation, control, automation







# Environment: Noise and Air Quality

## Section 61 Overview

## Working Hours

**Standard hours:** 08:00-18:00 (Monday to Saturday)

**Extended hours:** 05:00 to 08:00 and 18:00 to 22:00 (Monday to Friday)

Including:

- Large concrete pours.
- Services, work at height and access installation and removals.
- Repair works on the existing sewer and cofferdam.
- Drainage and excavation dewatering.
- Barge movements.

**Mobilisation and Demobilisation:** 07:00-08:00 & 18:00-19:00 (Standard hours) 04:30-05:00 & 22:00-22:30 (extended hours)

- Briefings, inspections, safety start up checks, concrete wagons arriving for testing, ventilation fan switched on.

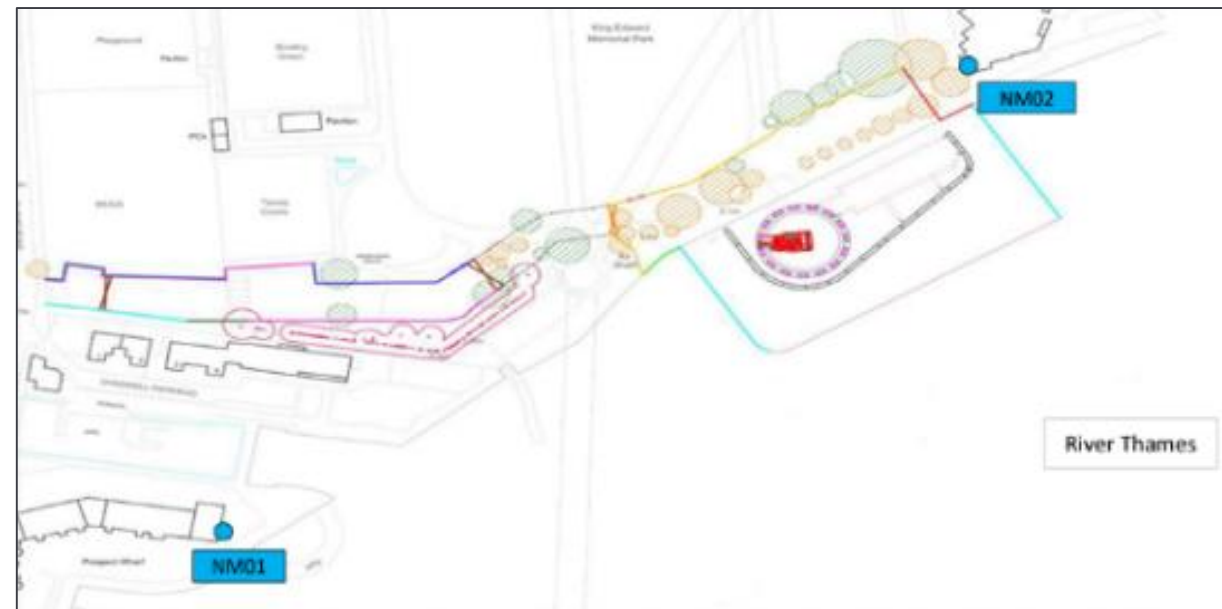
**Maintenance:** 08:00-17:00 (Saturday) 10:00-16:00 (Sunday)

- Plant maintenance and installation/maintenance of services such as dewatering

## Section 61 Exceedances

- **Noise** (Dec 21 - Current): 4 out of 40 allowed TAP exceedances during 6 month period.
- **Air** (Dec 21 - Current): 0

## Monitoring Locations





# Environment: Noise and Air Quality

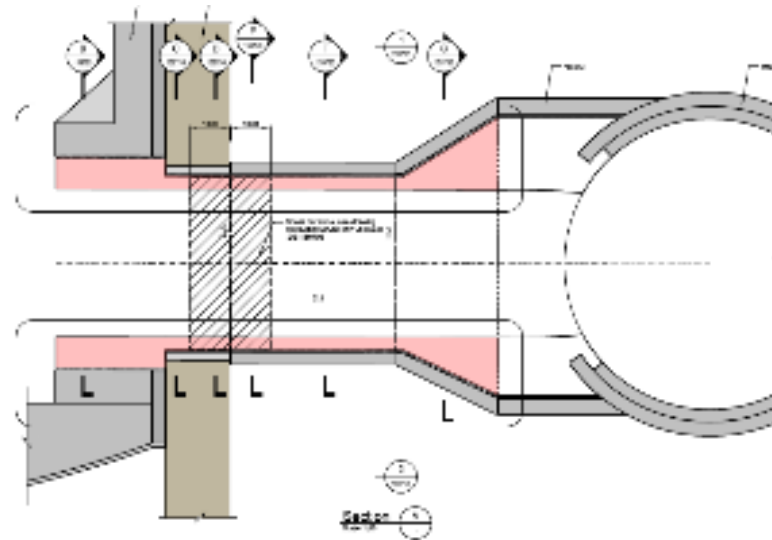
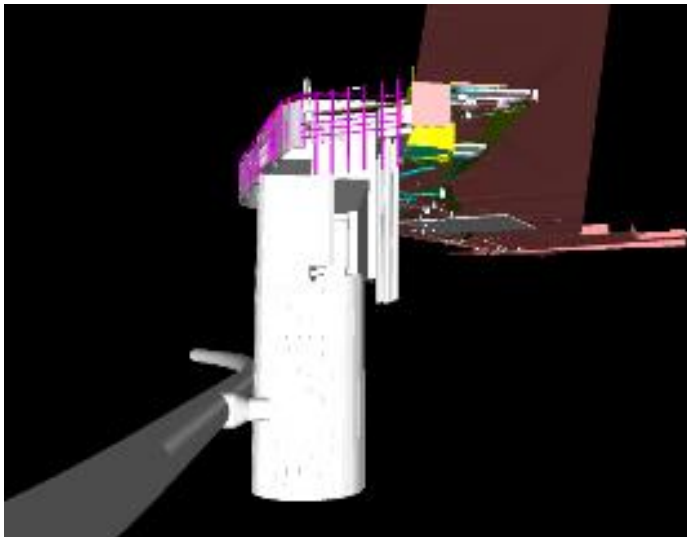
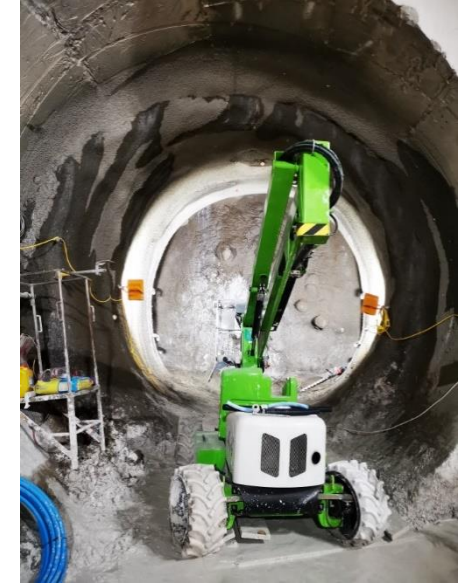
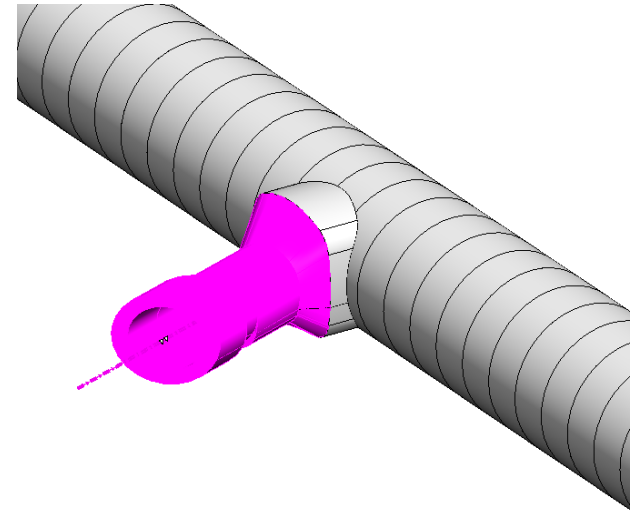
## Section 61 Overview

### Continuous hours (24 hour shift pattern):

- From 27 June 2022
- 7am Monday to 6pm Saturday
- Works are planned for four weeks.

Approved dispensation to Section 61 to include adit connection

Tunnel construction for health and safety reasons.





# Foreshore structure planning update





# Foreshore structure





# Foreshore structure





# Foreshore structure



- Architecture and Landscape works between Q1 2023 to Q3 2024
- Kiosk construction between Q1 2023 and Q4 2023



# COMMUNITY INVESTMENT





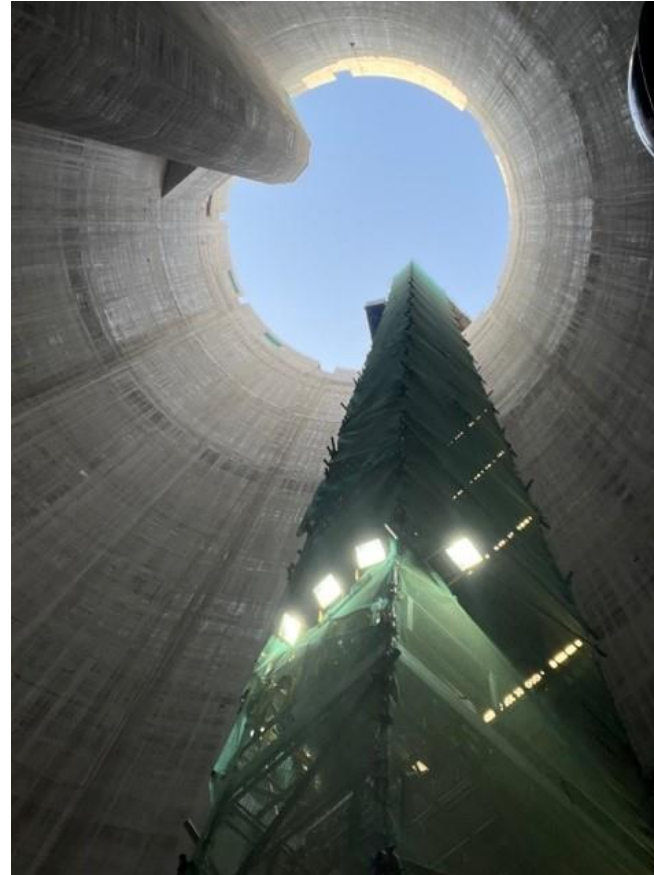
# CHARITY WORK



The site General Foreman, Damon Kelly from Kelly Formwork, launched a unique and ambitious fundraising effort to coincide with a health and safety campaign at the King Edward Memorial Park Foreshore site.

He committed to climbing KEMPF's 65m high shaft haki staircase the same number of times as the equivalent of ascending Mt Everest. This challenge was tackled over a 3 month period.

He used the fitness challenge to promote prostate cancer awareness and fundraise for Prostate Cancer UK, with all the KEMPF team getting behind him to help him reach his fundraising goal of £2,000.





# CHARITY WORK

The King Edward Memorial Park Foreshore site team recently held a bake sale, raising money for mental health awareness week.

The event was great fun and raised over £300 for the Lighthouse construction workers charity!

Senior General Foreman Ramandeep Gill raised over £2,000 for the British Heart Foundation when completing the annual London to Brighton bike ride this month.



London to Brighton



# CVB commitment to volunteering...



Staff recently undertook a 5km indoor row, 5km Run and a 5km walk as part of the **AHOY5KMay** challenge

The Ahoy Centre charity in Deptford supports disadvantaged people through water sports

Staff also recently cycled to Somerset to raise funds for their chosen charity.





# MITIGATION



Tideway





# MITIGATION - making a claim if affected by Tideway's work



## Who do I go to for advice?

For personal assistance contact our Helpdesk: 08000 30 80 80 or [helpdesk@tideway.london](mailto:helpdesk@tideway.london)

For independent advice contact Independent Advisory Service (IAS) Helpline: 0800 917 8845 or [info@tidewayias.co.uk](mailto:info@tidewayias.co.uk)

## How do I submit my claim?

The Helpdesk can submit your claim to the Independent Compensation Panel (ICP) on your behalf, or you can submit your claim direct to the ICP: [admin@tidewayicp.london](mailto:admin@tidewayicp.london)

You can download the claim form from the Tideway website:

[www.tideway.london/help-advice/compensation-information/Independent-Compensation-Panel](http://www.tideway.london/help-advice/compensation-information/Independent-Compensation-Panel)



## CONTACT US



If you do have any questions or enquiries, please contact the Tideway Helpdesk:

Telephone: **0800 030 80 80**

Email: **[Helpdesk@Tideway.London](mailto:Helpdesk@Tideway.London)**



**THANK YOU**



**Tideway**

**Any Questions**





**Tideway**

# **RECONNECTING LONDON WITH THE RIVER THAMES**

**#SuperSewer**

[www.tideway.london](http://www.tideway.london)