

DORMAY STREET & KING GEORGE'S PARK

Community Liaison Working Group

Monday 18 July 2022



Tideway



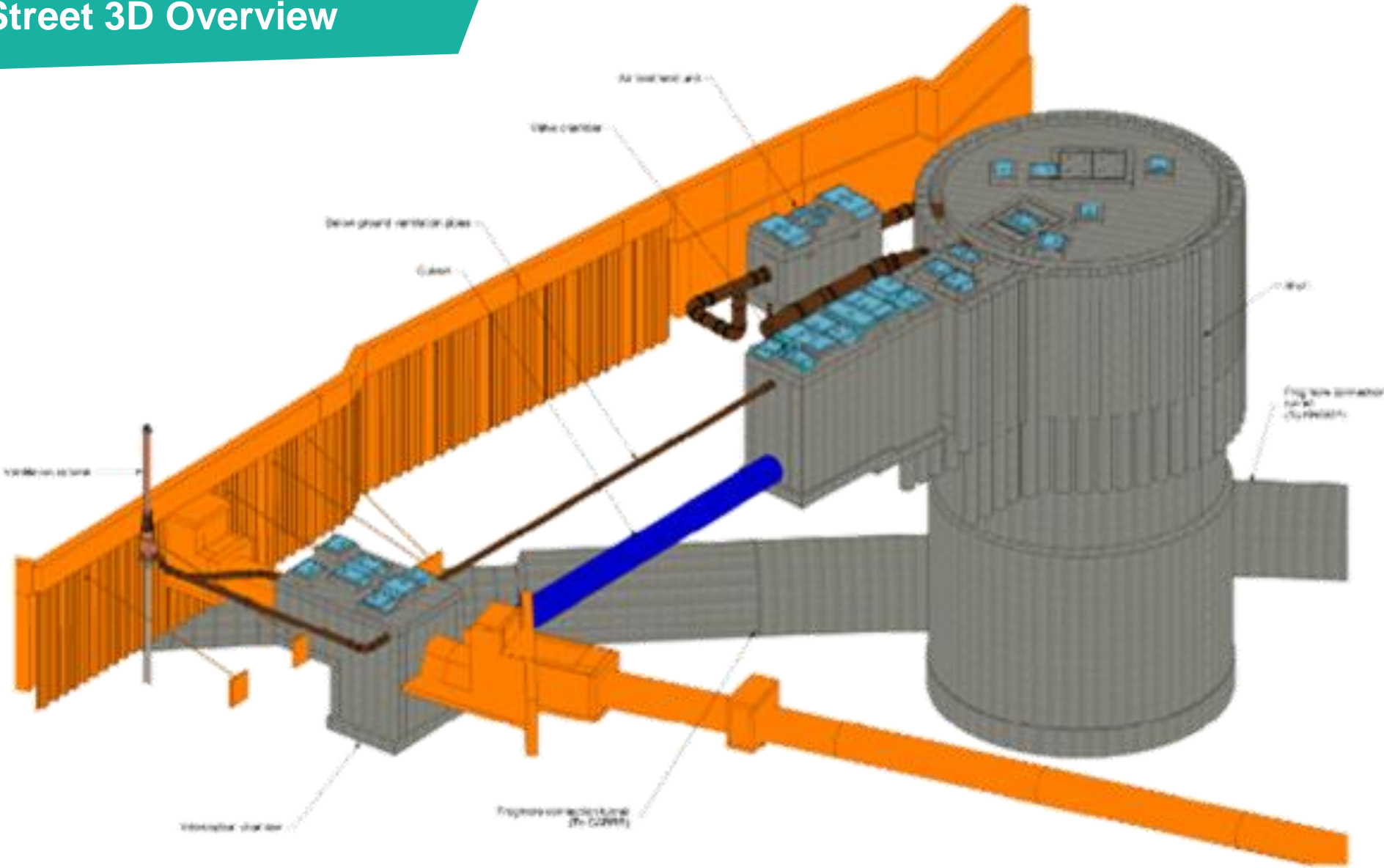


WELCOME

**DORMAY
STREET**

Beth Armstrong Sub Agent

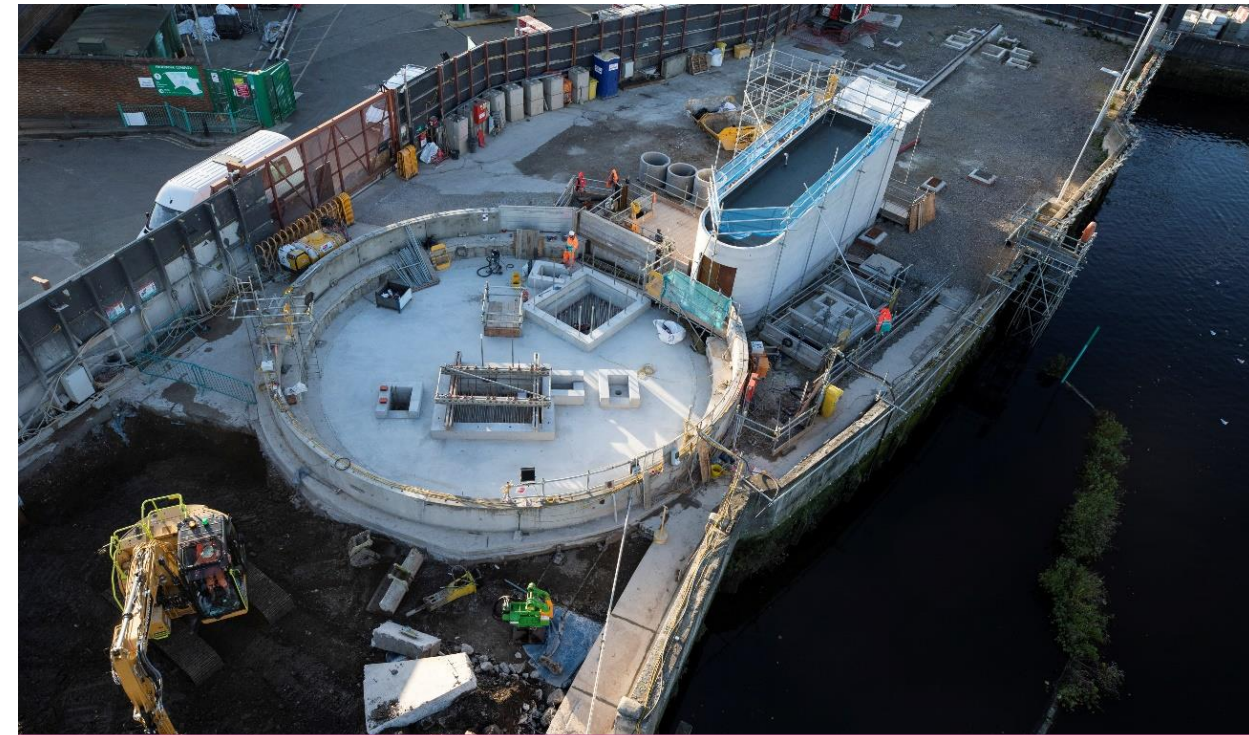
Dormay Street 3D Overview



Dormay Street Overview



Works Update: November 2021 – July 2022



Shaft
Completed



Area A1
Completed paving works and hand back to council

Works Update: November 2021 – July 2022



Attenuation Tank
Piling works, excavation, construction and completion

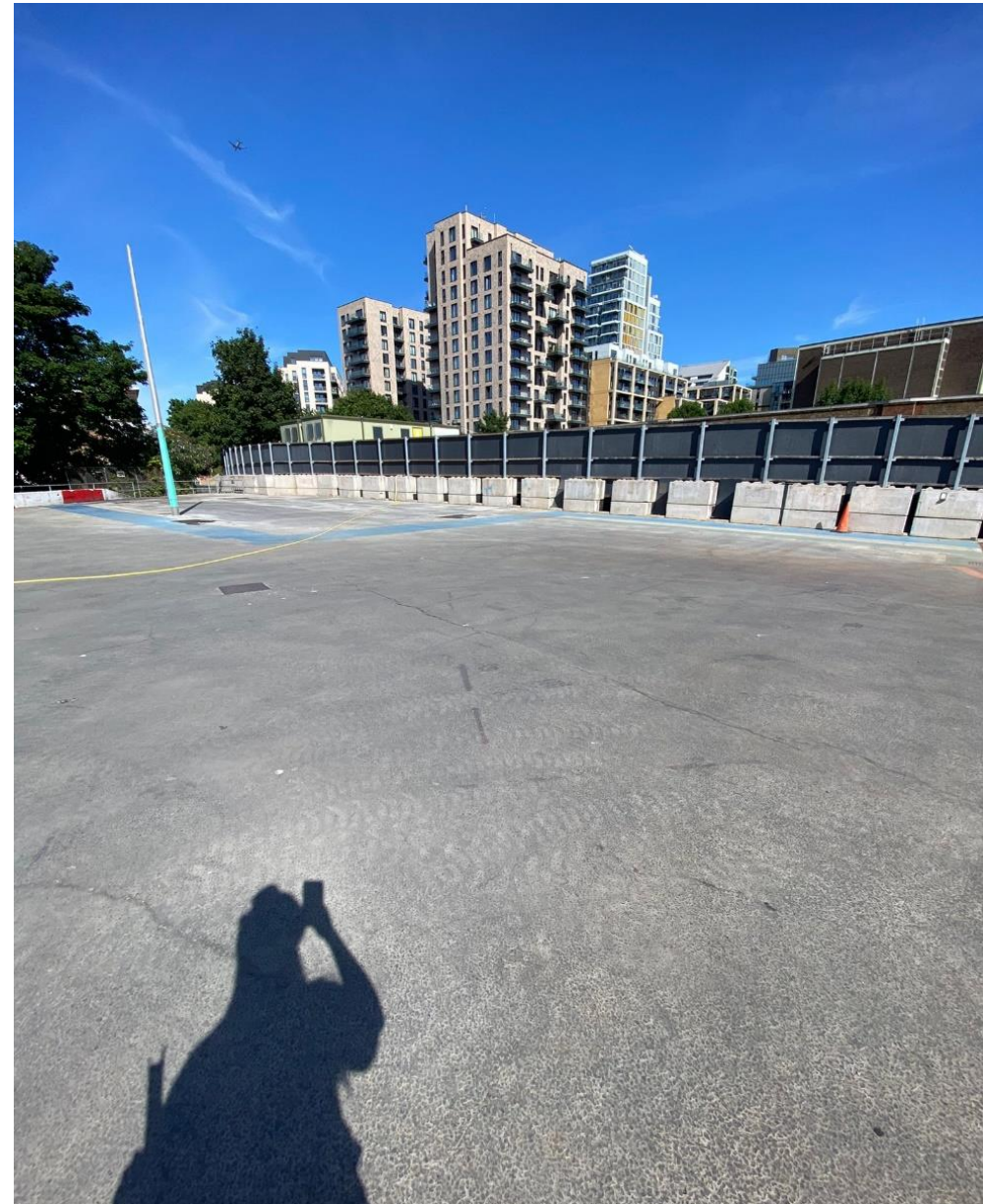


Remainder of site
Paving works on-going

Works Update: November 2021 – July 2022

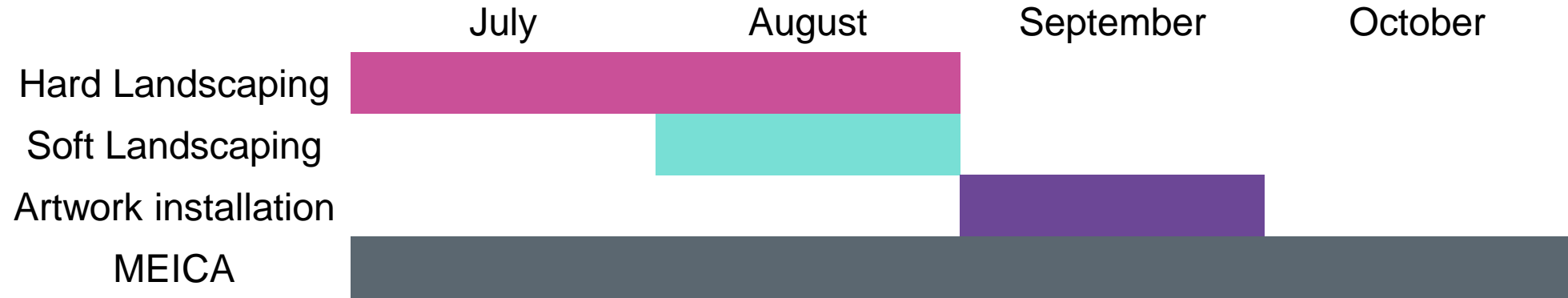


Causeway Island
Soft Landscaping complete



Causeway Island
Ready for handover

Look Ahead (next 6 months)



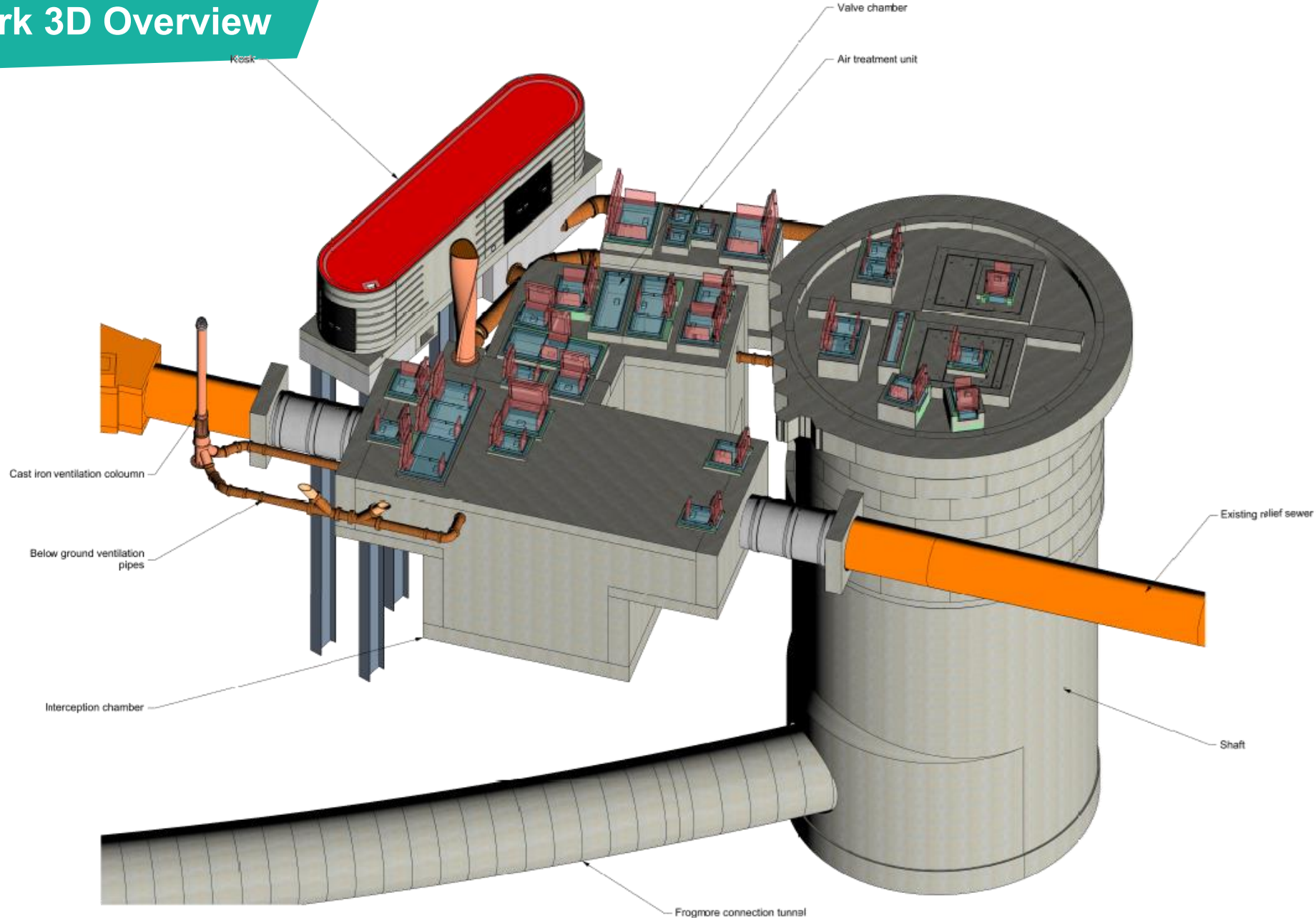
Core working hours 8am-6pm Monday – Friday and 8am-1pm Saturday. One hour start up and shut down periods either side of working hours



**KING
GEORGE'S
PARK**

Kevin Dollard, Section Manager

King George's Park 3D Overview



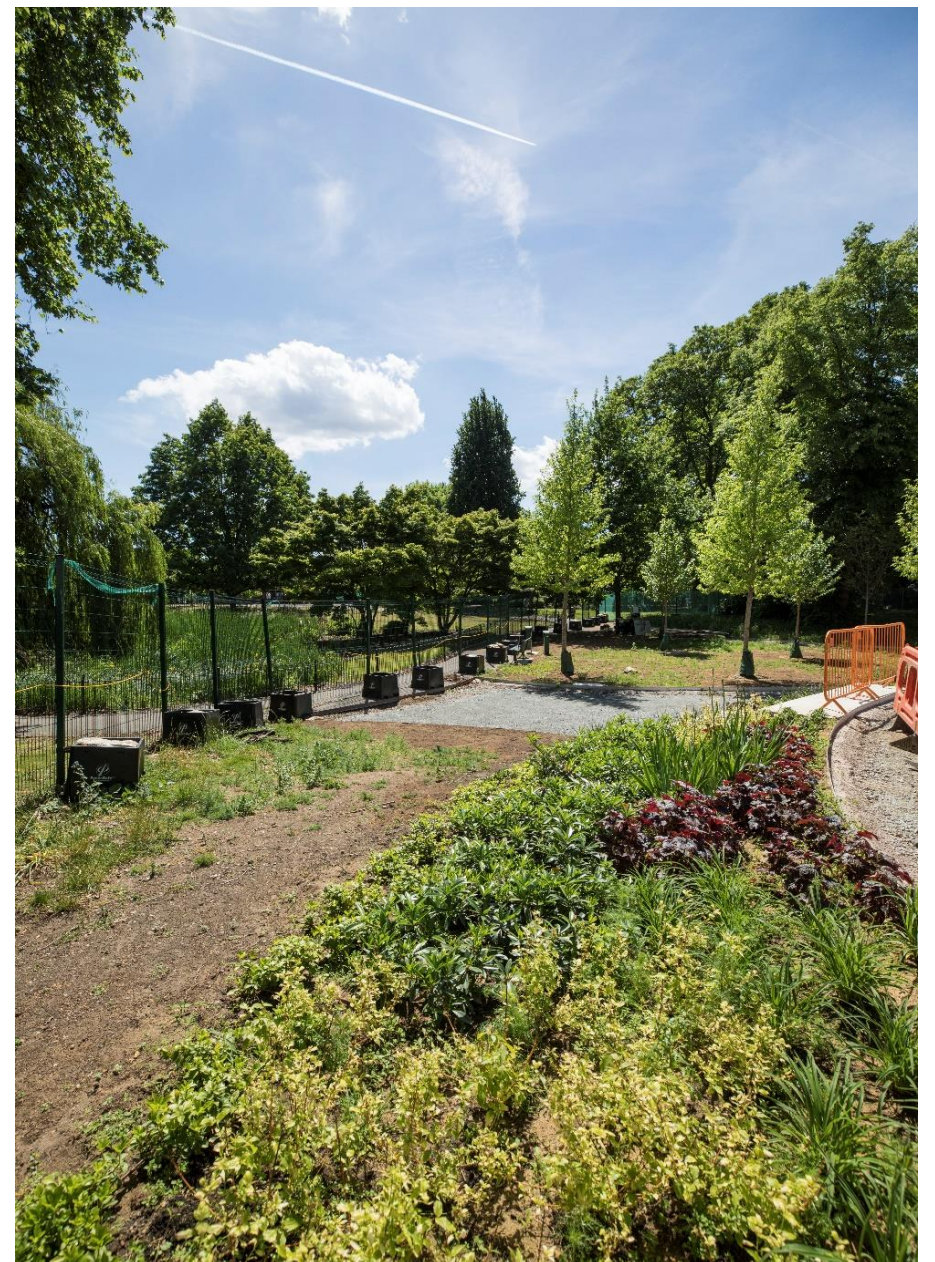
King George's Park Overview



Works Update: November 2021 – July 2022



Shaft
Completed



Planting
Works completed

Works Update: November 2021 – July 2022

May 2021



Electrical Install
On-going



Installation of benches
On-going

Works Update: November 2021 – July 2022



Dwarf wall installation (Buckhold Road)
On-going



Hard Landscaping works
On-going

Look Ahead (next 6 months)

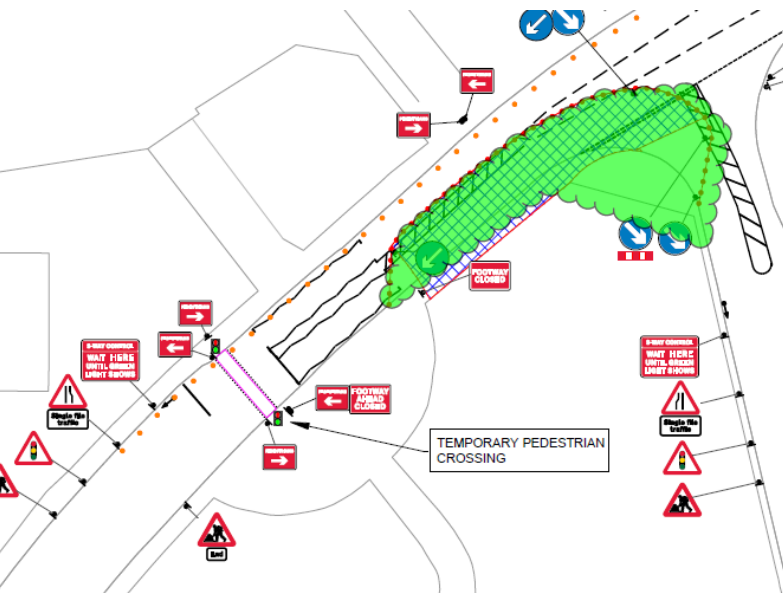


Core working hours 8am-6pm Monday – Friday and 8am-1pm Saturday. One hour start up and shut down periods either side of working hours.

Any working outside of standard working hours will be agreed with the local authority through a Section 61 consent, dispensation or variation and will be communicated to relevant stakeholders.

Site entrance works

- Site entrance works from 25 July for 3 weeks
- Result in lane closure on Buckhold Road for 2 weeks
- Footpath closure for additional week





**COMMUNITY
ENGAGEMENT**

Katie Ashton, Communications Manager

Community Engagement

- 5 noise and vibration complaints and 1 lighting complaint received since the last meeting for both Dormay Street and King George's Park

All enquiries have been responded to within 24 hours (where possible)



Call: 08000 30 80 80

Email: helpdesk@tideway.london

Write to: Freepost TIDEWAY

How To Make A Claim if Affected By Tideway's Work

Who do I go to for advice?

- For general assistance and advice on the Independent Compensation Panel process please contact the Tideway Helpdesk
 - 08000 30 80 80 or helpdesk@tideway.london

The Independent Advisory Service (IAS) Helpline can be contacted for independent advice:

- 0800 917 8845 or info@tidewayias.co.uk

How do I submit my claim?

Please submit your claim direct to the Independent Compensation Panel: admin@tidewayicp.london or to the helpdesk

The IAS can send you a claim form, or you can download the form off the Tideway website: www.tideway.london/help-advice/compensation-information/Independent-Compensation-Panel

Community Engagement

- Our community investment and engagement activities are continuing
- Please contact us if you are aware of an opportunity or community group that we could support.



How To Stay Up To Date

Follow us on social media:
@TidewayLondon



en-gb.facebook.com/TidewayLondon/



www.instagram.com/tidewaylondon/



www.linkedin.com/company/tideway-london/



twitter.com/TidewayLondon

vimeo

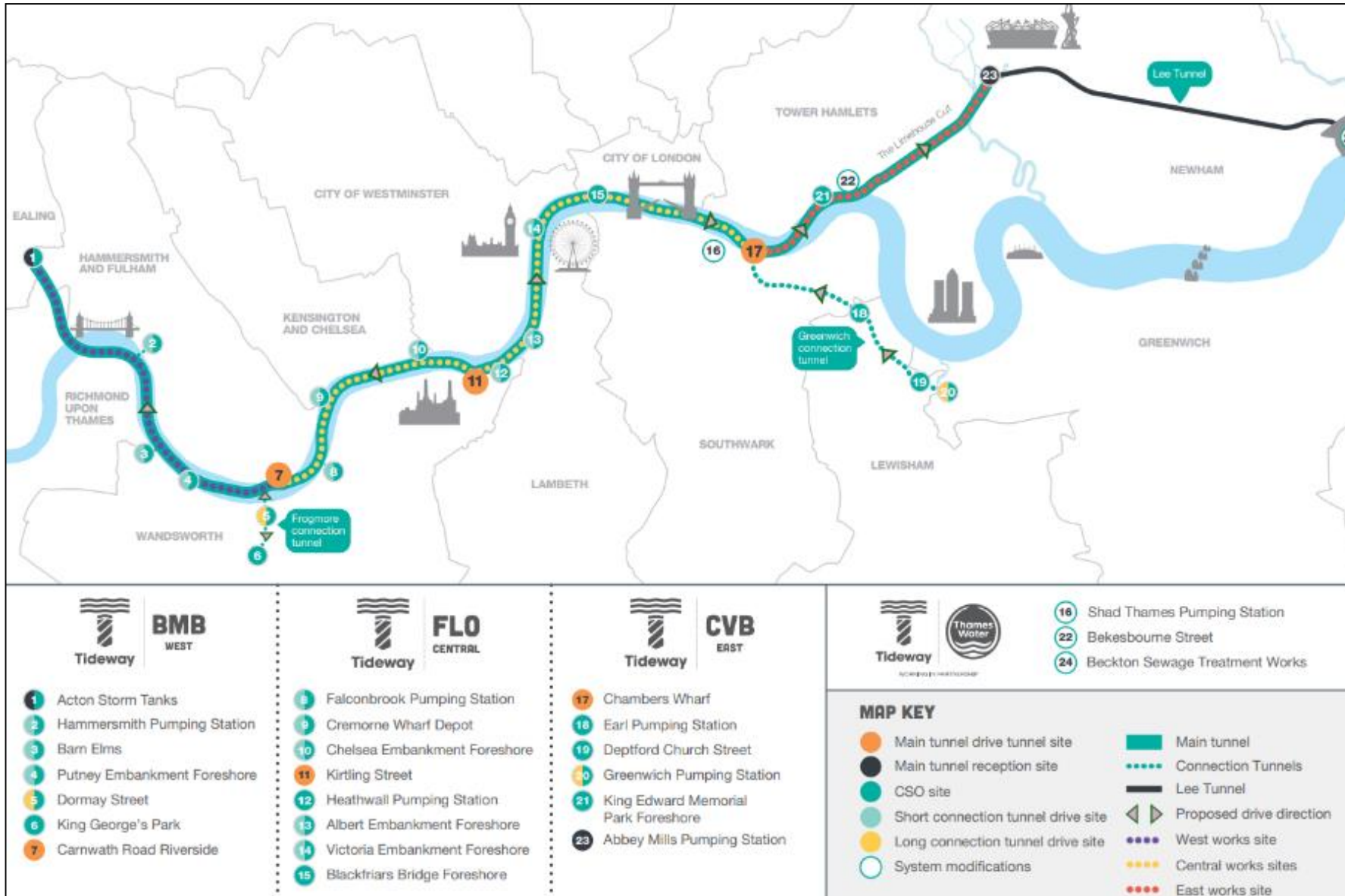
Vimeo.com/tideway

If you would like to be added to our mailing list for works updates/notifications, email helpdesk@Tideway.London

TIDEWAY UPDATE

Emily Black, Engagement Manager

The route



Programme highlights

- Successful completion of tunnelling. Tunnell boring machine (TBM) Annie completed the drive from Greenwich to Chambers Wharf, and TBM Selina completed journey to Abbey Mills.
- Construction approximately 80% complete across the project.
- Continued focus on secondary lining. More than 50% complete overall, and 100% complete in Central.
- Above ground works progressing – two signature ventilation columns now in place – one at King George's Park and the first one on the riverside at Putney
- Installation of mechanical and electrical equipment continues across most West sites
- 5.5 million tonnes of construction and excavated material moved by river.



TBM Annie breaks into shaft at Chambers Wharf

Programme overview



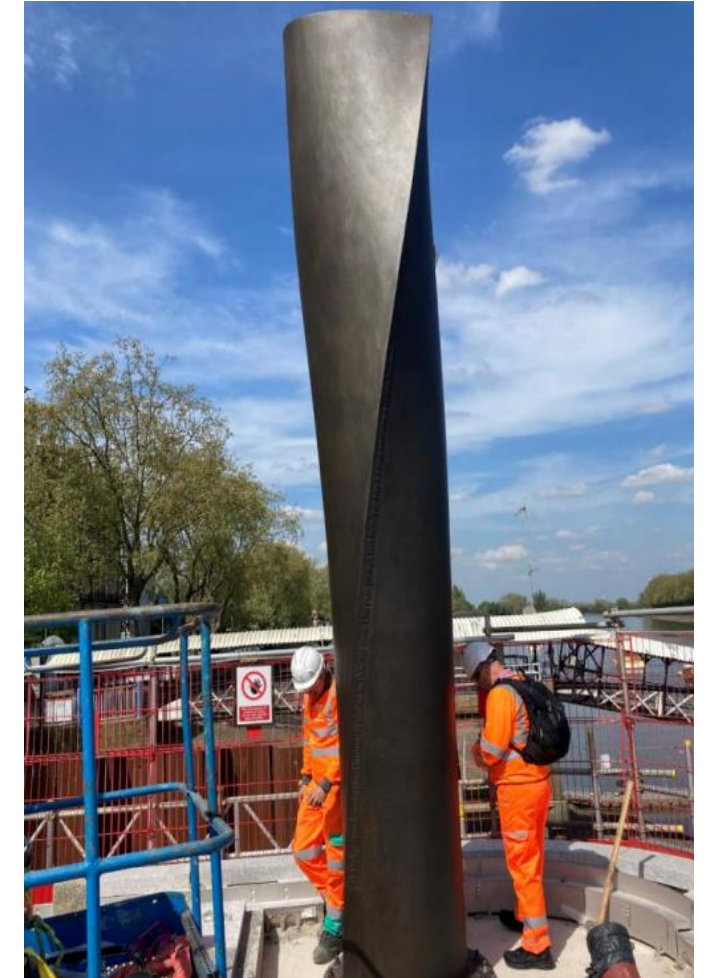
Main Tunnel A secondary lining at Hammersmith junction



Putney Embankment river wall revealed



Completion of secondary lining on Central



First riverside signature vent column



Tideway

RECONNECTING LONDON WITH THE RIVER THAMES

#SuperSewer

www.tideway.london

QUESTIONS?



Tideway

RECONNECTING LONDON WITH THE RIVER THAMES

#SuperSewer

www.tideway.london