

GREENWICH PUMPING STATION & DEPTFORD CHURCH STREET Community Liaison Working Group



Tideway

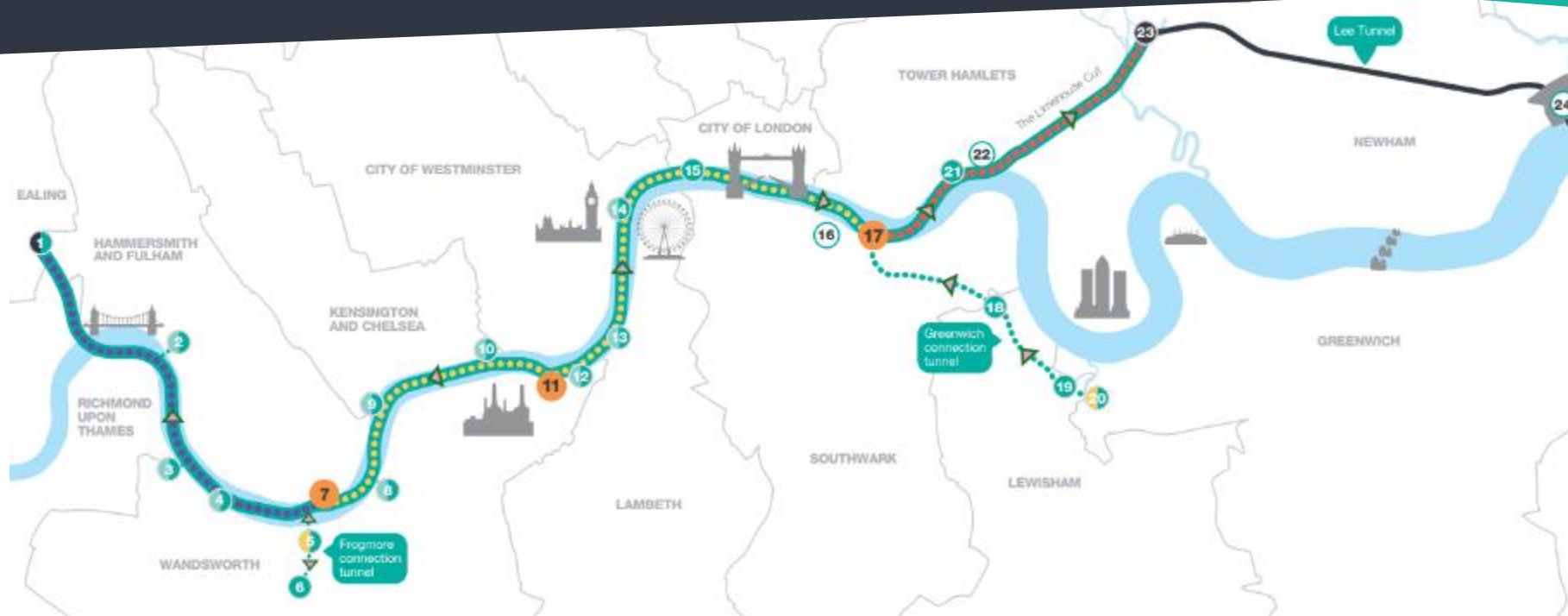


13 July 2022

Content

Topic	Lead
Welcome and introductions	Mehboob Khan
Updates from project team – Greenwich Pumping Station <ul style="list-style-type: none">• Construction update and future programme• Noise and air quality	Tideway team
Updates from project team – Deptford Church Street <ul style="list-style-type: none">• Construction update and future programme• Noise and air quality• Planning submission update	
<ul style="list-style-type: none">• Community Investment and Community Relations• Mitigation	
Feedback and discussion	All
Any other business	All
Close	All

PROJECT OVERVIEW



<p>BMB WEST</p>	<p>FLO CENTRAL</p>	<p>CVB EAST</p>	<p>16 Shad Thames Pumping Station 22 Bekesbourne Street 24 Beckton Sewage Treatment Works</p>
<p>1 Acton Storm Tanks 2 Hammersmith Pumping Station 3 Barn Elms 4 Putney Embankment Foreshore 5 Dornay Street 6 King George's Park 7 Carnwath Road Riverside</p>	<p>8 Falconbrook Pumping Station 9 Cremorne Wharf Depot 10 Chelsea Embankment Foreshore 11 Kirtling Street 12 Heathwall Pumping Station 13 Albert Embankment Foreshore 14 Victoria Embankment Foreshore 15 Blackfriars Bridge Foreshore</p>	<p>17 Chambers Wharf 18 Earl Pumping Station 19 Deptford Church Street 20 Greenwich Pumping Station 21 King Edward Memorial Park Foreshore 23 Abbey Mills Pumping Station</p>	<p>MAP KEY</p> <ul style="list-style-type: none"> Main tunnel drive tunnel site Main tunnel reception site CSO site Short connection tunnel drive site Long connection tunnel drive site System modifications Main tunnel Connection Tunnels Lee Tunnel Proposed drive direction West works site Central works sites East works site

GREENWICH WORKS UPDATE

Tunnel

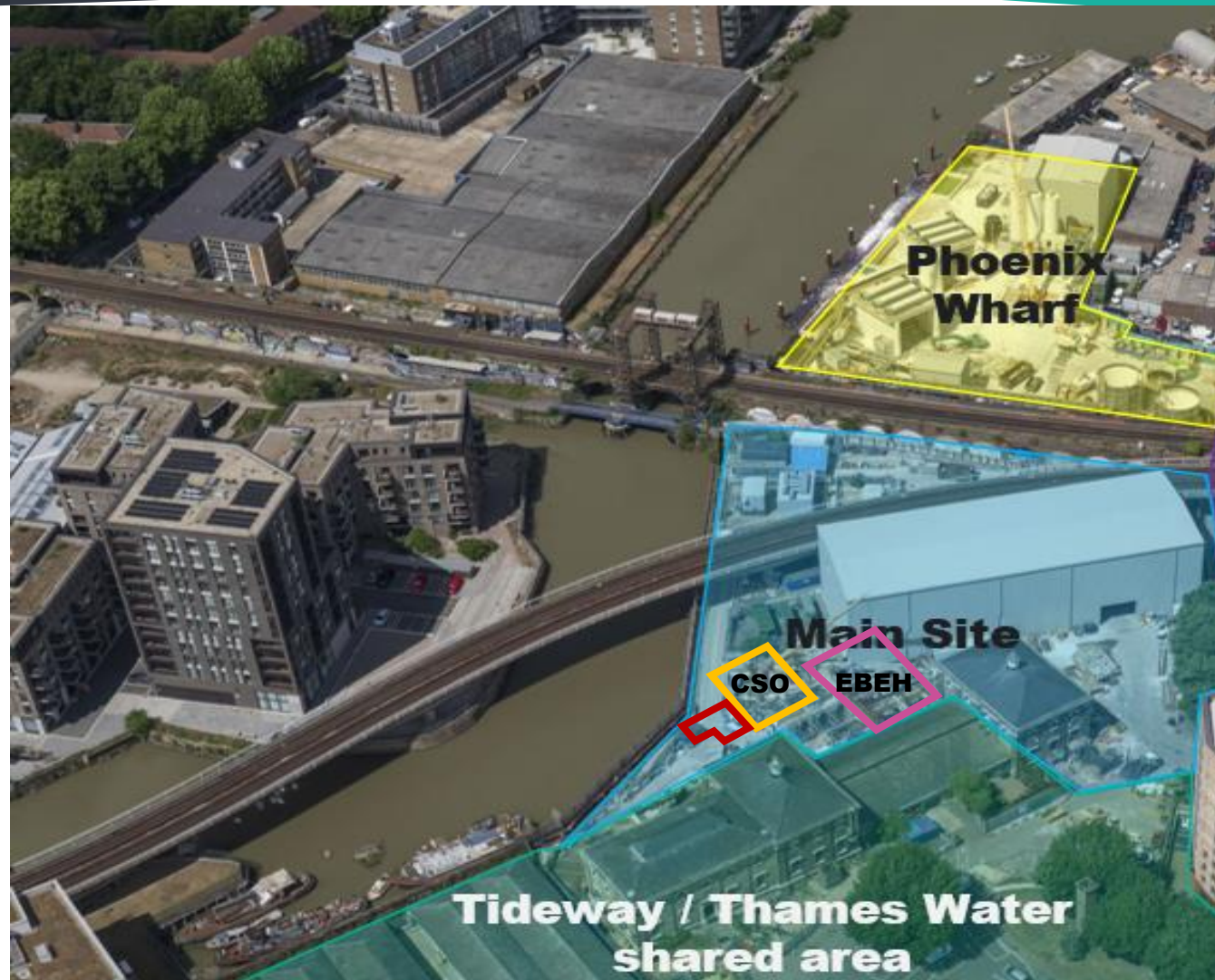
- Greenwich connection tunnel drive completed – 5 April 2022
- Tunnel strip and clean on going (removal of slurry pipework and pumps)
- Tunnel leak sealing on going (500 rings)
- Tunnel secondary lining shutter delivery

Combined Sewer Overflow (CSO)

- Base slab completed - 12 May 2022
- Start of reinforced concrete lining walls

East Beam Engine House (EBEH)

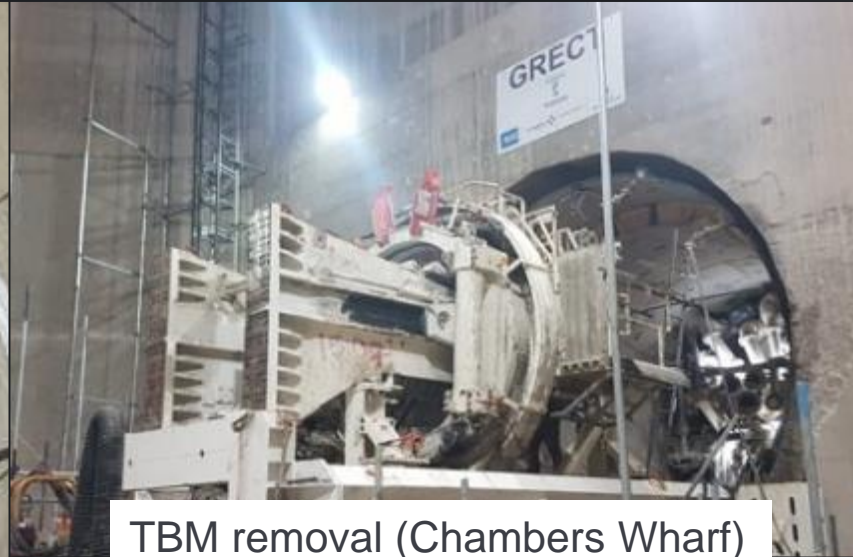
- Pouring of a new permanent spanned concrete slab – 75% done (3 bays out of 4)
- Excavation for ventilation air ducts installation 75% completed



TUNNEL & TUNNEL BORING MACHINE (TBM)



Tunnel strip and clean



TBM removal (Chambers Wharf)



TBM removal, barge loading (Chambers Wharf)



TBM removal, barge loading (Chambers Wharf)

TUNNEL SECONDARY LINING



Secondary Lining Shutter (Slovenia)



Secondary Lining Shutter (Slovenia)



Secondary Lining Shutter delivery (Greenwich)

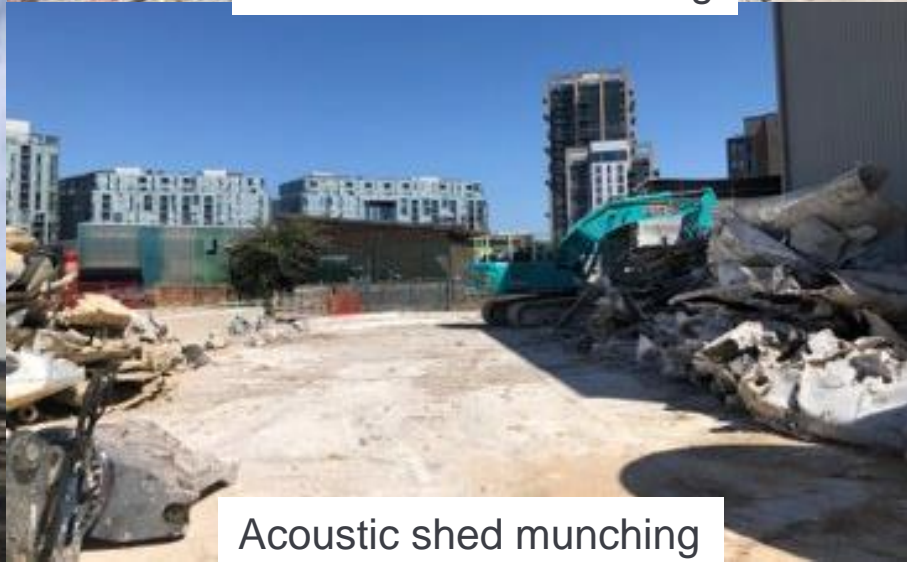
PHOENIX WHARF



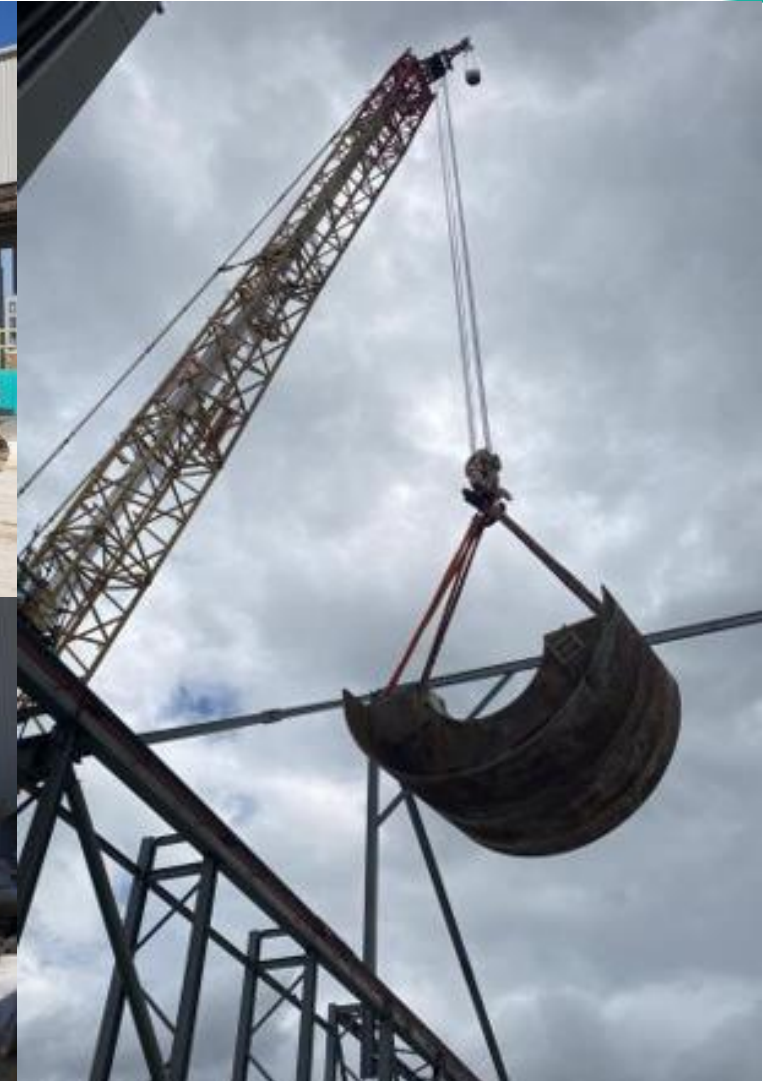
SILOS removal (Phoenix Wharf)



Acoustic shed munching



Acoustic shed munching



TBM shield removal (Chambers Wharf)



Tideway

COMBINED SEWER OVERFLOW (CSO) WORKS



CSO base slab poured



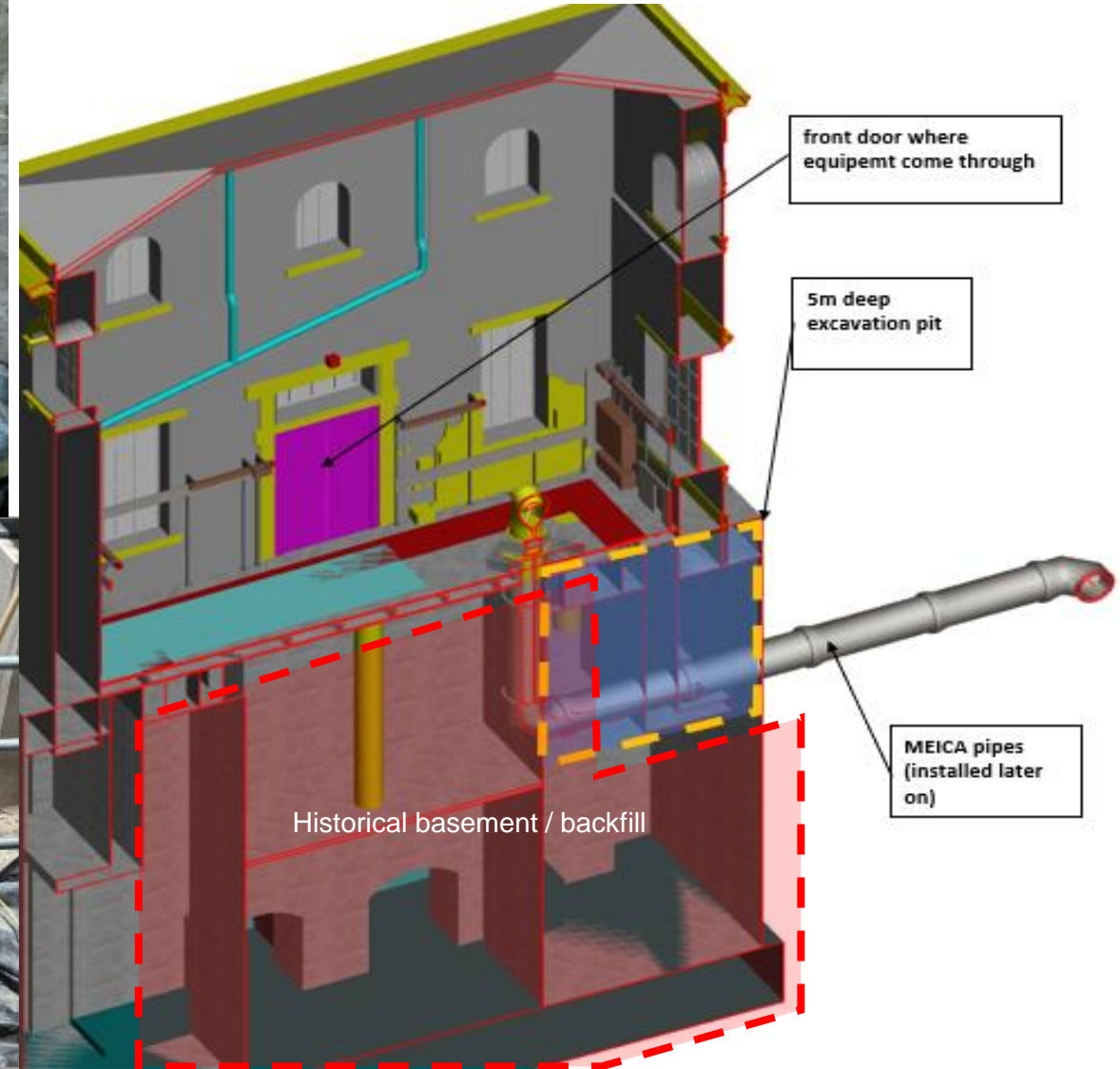
Reinforcement of lining walls



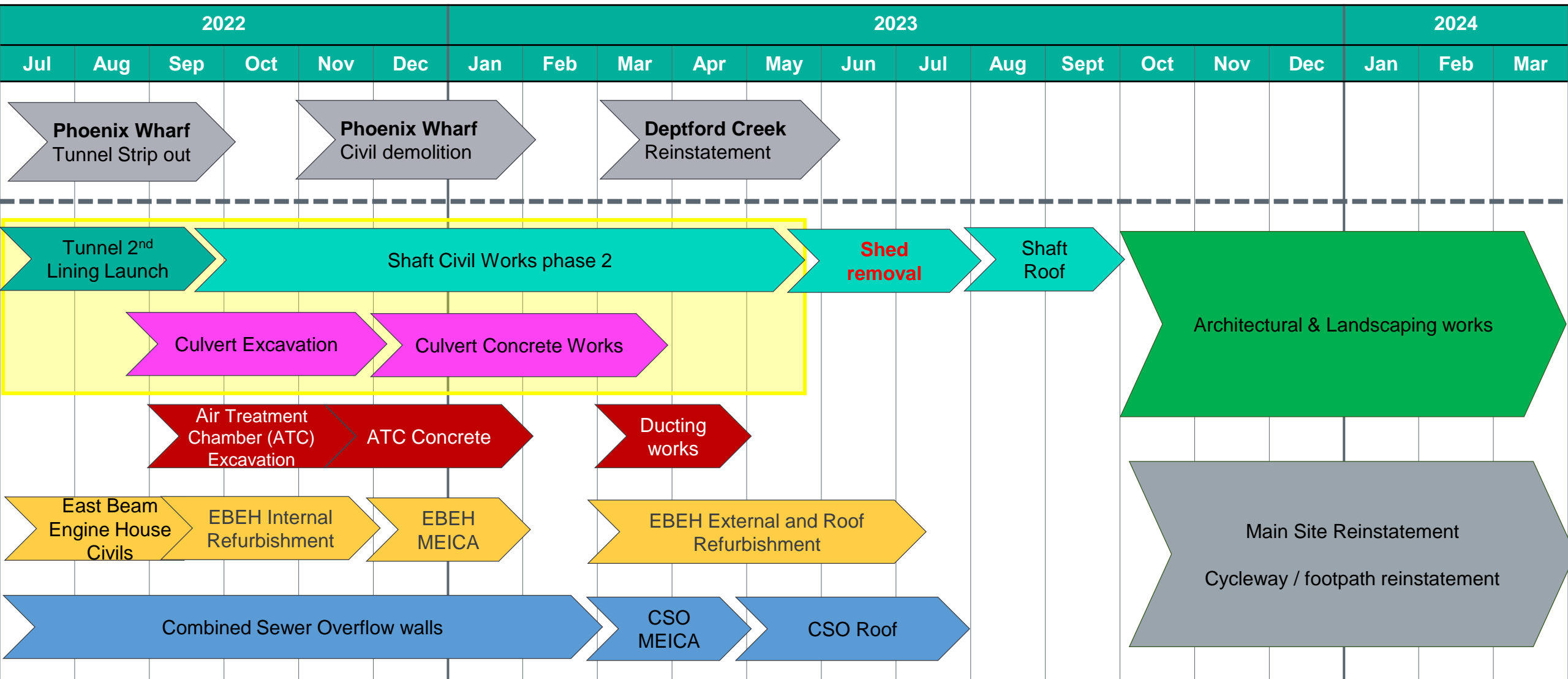
Temporary propping removal

Connection to existing chamber

EAST BEAM ENGINE HOUSE



GREENWICH LOOK AHEAD



Activities under acoustic shed

*MEICA: Mechanical, Electrical, Instrumentation, Control and Automation – the mechanics that will finally operate Tideway

PHOENIX WHARF STRIP OUT



Tunnel installation Strip Out

- Removal of the muck handling plant
- Dismantle and removal of acoustic sheds over the plant
- Strip and clean of the plant – returning to supplier in France
- Removal of tanks

Phoenix Wharf Reinstatement

- Removal of concrete walls
- Removal of temporary foundations

TUNNEL SECONDARY LINING



Tunnel Secondary Lining shutter
(credit: Tideway West)



Tunnel after secondary lining
(credit: Tideway West)

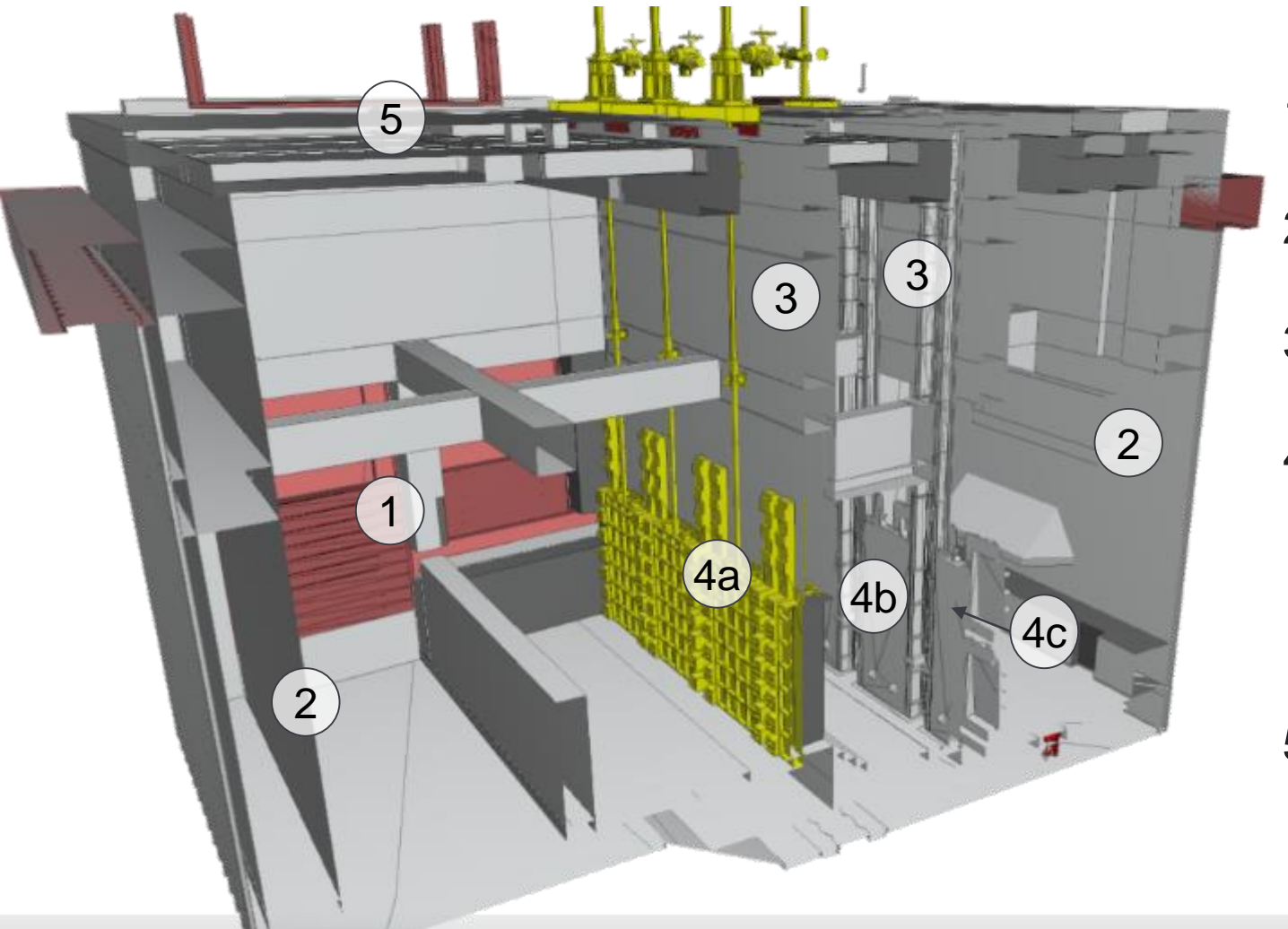
- 6No. drum shutters manufactured in Slovenia are delivered into Greenwich site and assembled in the shaft
- They will be launched one at a time from Greenwich on their journey to Chambers Wharf (picture: West)

NORMAN ROAD CLOSURE



- Norman Road Vehicle Holding Area (VHA) will remain in place until **end of September 2022**
- Bellville House cladding works: Erection of scaffolding until mid September 2022. During this time, pedestrian footpath diverted opposite to DLR/North Pole
- Once erected, cladding works will take approx. 12-16 months.
- Pedestrian footpath will be reinstated

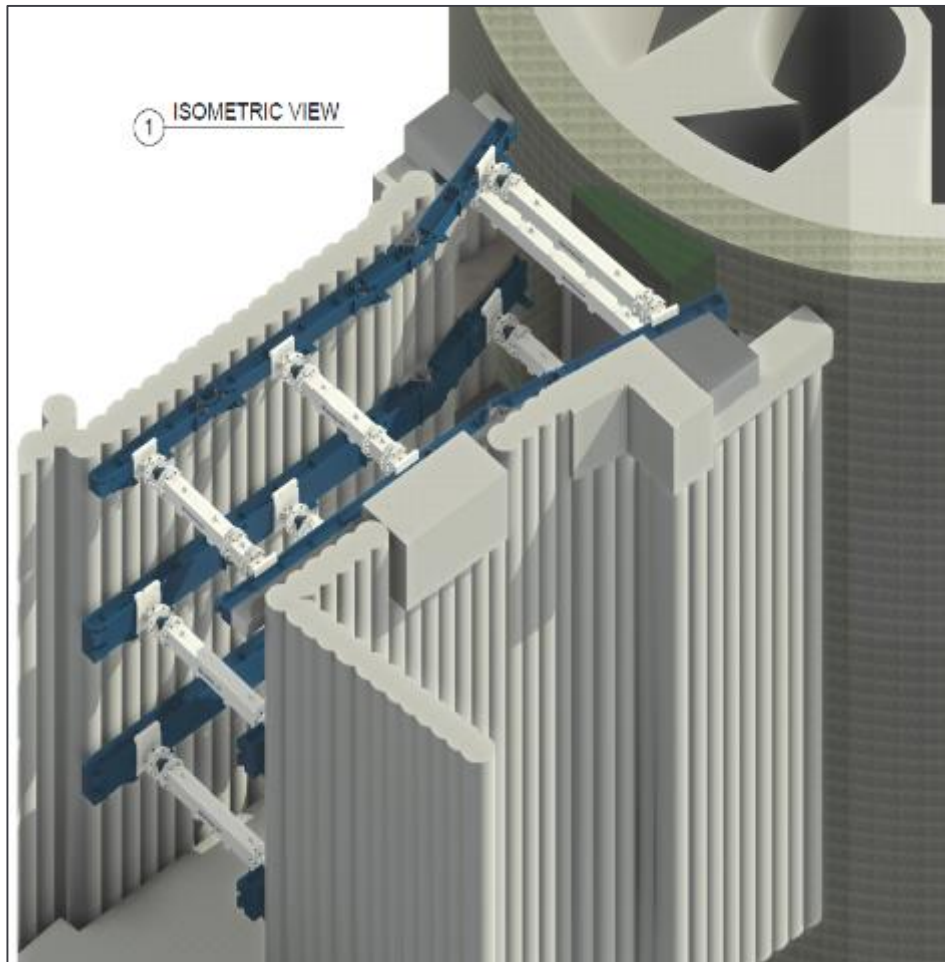
COMBINED SEWER OVERFLOW



1. Opening to existing sewer chamber
2. Construction of lining walls
3. Construction of 2 internal walls
4. MEICA: Installation of
 - a) 4 Nos. Penstock gates
 - b) 4 Nos. Tunnel Isolation gates
 - c) 8Nos Flap-Valve
5. Construction of roof cover slab

CULVERT

The culvert is the 12m deep RC structure connecting the interception chamber (CSO) to the main shaft. The foundation (secant piles) were completed in 2020



Planned works (under acoustic shed)

- Excavation and installation of 3 levels of temporary propping
- Construction of base slab
- Connection into CSO and main shaft (concrete wire sawing)
- Construction of walls
- Construction of roof
- Backfilling

AIR TREATMENT CHAMBER



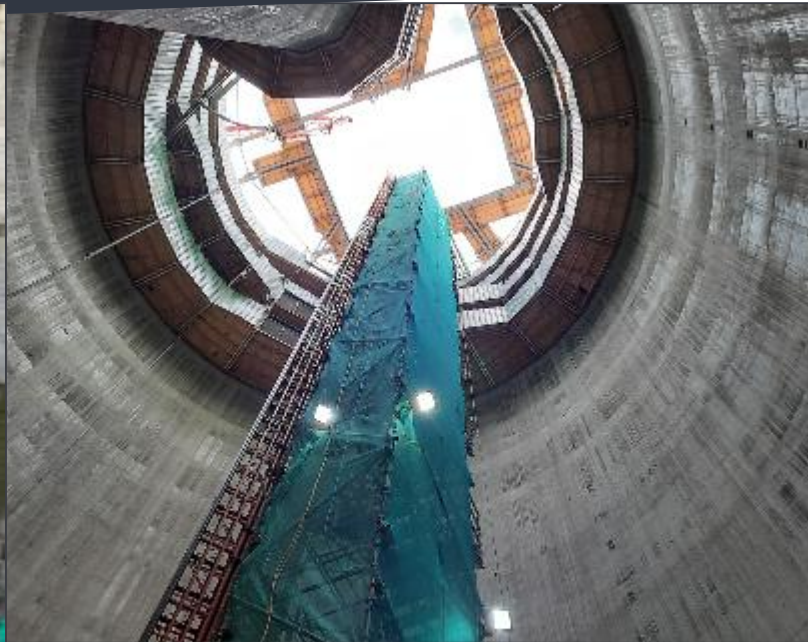
- Underground RC structure, 10m x 10m x 5m deep.
- Located between Valegro House and acoustic shed
- Cofferdam (sheet piles) and 3 level of propping
- Base slab
- Installation of services
- Construction of walls
- Construction of roof cover slab
- Cofferdam removal & backfilling



SHAFT



Vortex tube (Deptford site)



Shaft secondary lining (Earl site)

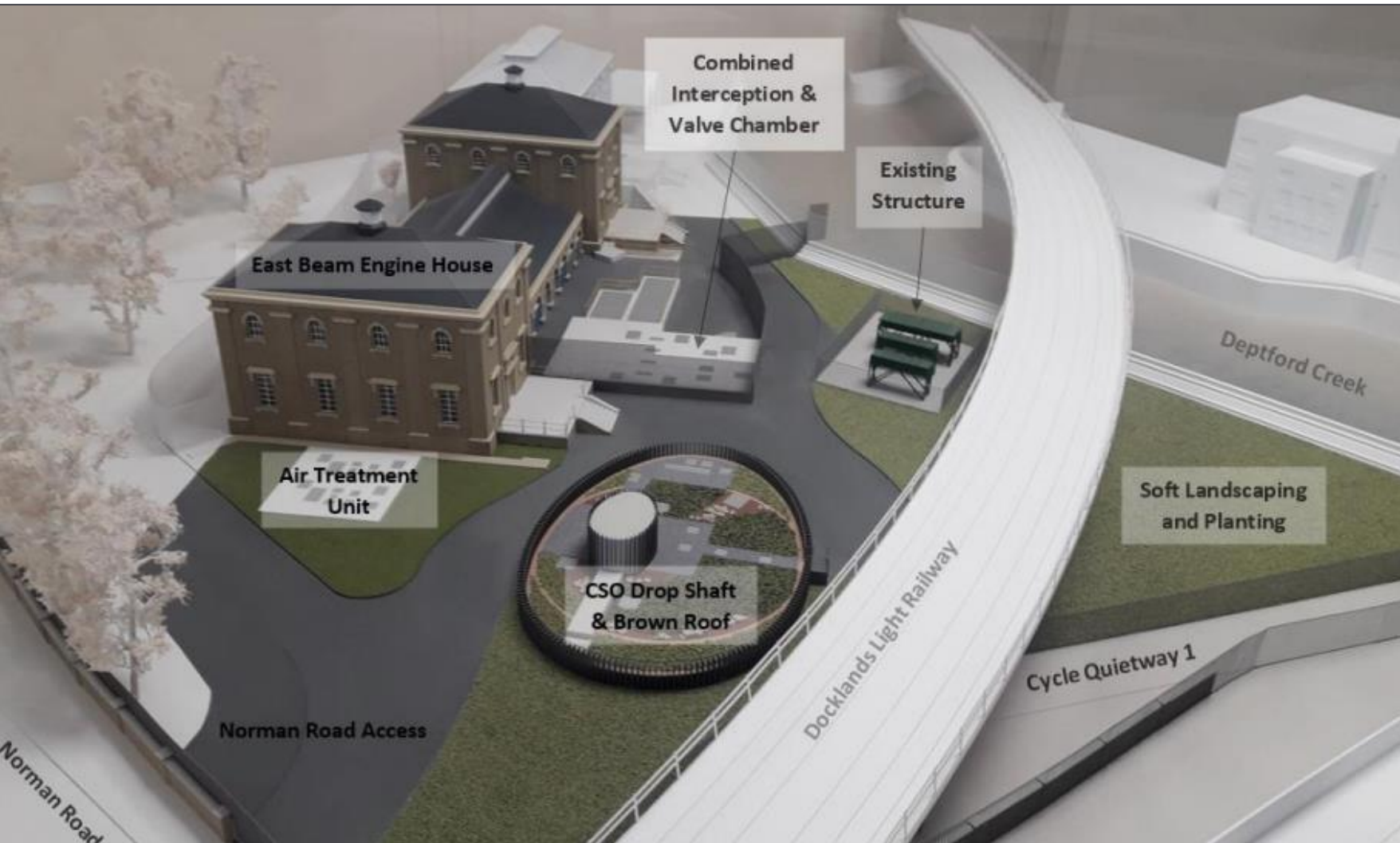


Vortex tube manufacture for Greenwich

Planned works (under acoustic shed)

- Delivery and installation of vortex stainless steel tube
- Construction of shaft secondary lining
- Construction of shaft internal walls
- Construction of shaft suspended walkways
- Construction of shaft roof (after removal of acoustic shed)

LANDSCAPING, REINSTATEMENT



- Cycleway / footpath reinstatement
- Brown roof over shaft
- Soft landscaping and planting
- Road surfacing
- Site reinstatement and demobilisation

The architecture & landscape plans were approved and the decision was issued on 21 April 2022.

NOISE AND AIR QUALITY



Tideway



GREENWICH PUMPING STATION: ENVIRONMENT



Month	Noise S61 Exceedances	Air Quality 24h PM10 exceedance
Jan-22	0	0
Feb-22	0	0
Mar-22	0	0
Apr-22	0	0
May-22	0	0
Jun-22	0	0

Noise Monitoring

- No Section 61 noise exceedances

Air Quality Monitoring

- No air quality exceedances (24h PM10)

DEPTFORD CHURCH STREET

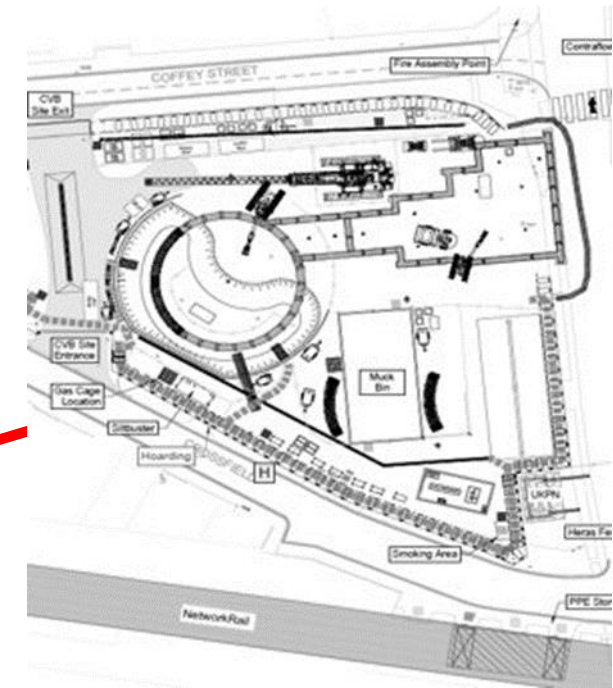


DEPTFORD WORKS UPDATE

ATC, SHAFT & CULVERT

Air Treatment Chamber (Phase 1)

- Base slabs complete
- Walls on-going
- NEXT: connection to shaft, continue walls, roof & backfill



Shaft

- Temporary backfill removal complete
- Opening to tunnel complete
- Tunnel works started
- NEXT: tunnel secondary lining



Culvert

- Safety stack chimney, backfill and platform complete
- NEXT: structure watertightness testing

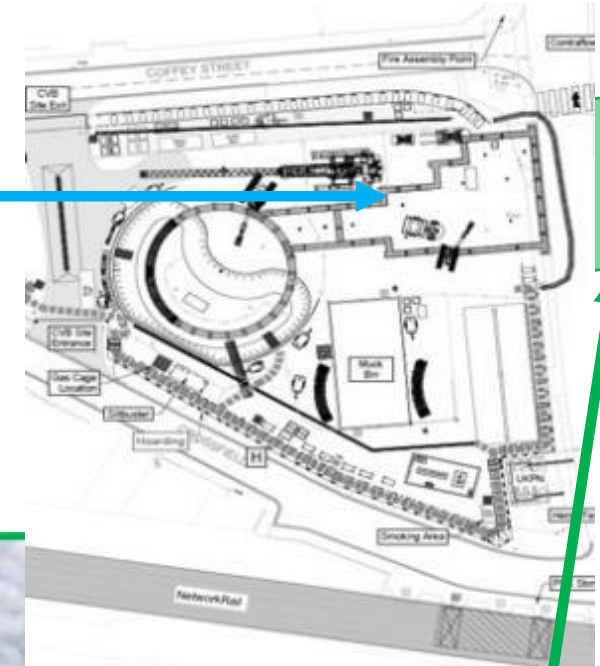


DEPTFORD WORKS UPDATE

Combined Sewer Overflow (CSO)

CSO Phase 1: Interception Chamber

- Preparation for MEICA equipment testing complete
- NEXT: testing of MEICA equipment



CSO Phase 2: Sewer connection

- Demolition of western sewer wall complete
- Flume hanging complete
- Sewer base demolition started
- NEXT: demolition of sewer base, removal of separation wall to CSO, new base slab construction





DEPTFORD 12 MONTHS LOOK AHEAD

	2022												2023												2024								
	1	2	3	4	5	6	7	8	9	10	11	12	1	2	3	4	5	6	7	8	9	10	11	12	1	2	3	4	5	6	7		
Shaft/culvert civils + MEICA	█									█																							
Tunnel activities from DEPCS					█																												
Air Treatment chamber, including mechanical installation	█											█																					
CSO civils, mechanical and electrical	█												█																				
Surface works, Landscaping and site reinstatement										█			█												█								

NOISE AND AIR QUALITY



Tideway



DEPTFORD CHURCH STREET: ENVIRONMENT



Month	Noise S61 Exceedances	Air Quality 24h PM10 exceedance
Jan-22	0	0
Feb-22	0	0
Mar-22	0	0
Apr-22	0	0
May-22	0	0
Jun-22	0	0

Noise Monitoring

- No Section 61 noise exceedances

Air Quality Monitoring

- No air quality exceedances (24h PM10)

ARCHITECTURE & LANDSCAPE



Tideway



DEPTFORD CHURCH STREET – ARCHITECTURE AND LANDSCAPE



- Deptford Church Street pre-application meeting held on 21 January 2022
- Community liaison working group held virtually on 30 March 2022
- Draft application submitted 31 March 2022
- All comments received by 29 April 2022
- Meeting held with London Borough of Lewisham Planning Officer on 04 May 2022

- The DCO approved the principle of the development, including the necessity and location of the permanent above ground works and their maximum/minimum height. Therefore, the scope of what London Borough of Lewisham can assess and approved is limited to:

- **Size**
- **Visual appearance**
- **Materiality**

- This is achieved by discharging the relevant requirements set out in Schedule 3 of the DCO:

DCO Sch 3 Requirement	Title
DEPCS 2	Detailed design approval for permanent above-ground structures
DEPCS 3	Detailed design approval for signature ventilation columns
DEPCS 4	Landscaping works
DEPCS 9	Specification of accesses (construction and operational)
DEPCS 10	Surface water drainage
PW11	Interpretation Strategy (Artwork)

- In this regard, the application only relates to the above ground materials, finishes and soft & hard landscaping
- Electrical and Control Kiosk will be submitted as a separate planning application under the Town and Country Planning Act, 1990



Keyplan

Mapping reproduced by permission of Ordnance Survey on behalf of HMSO. © Crown Copyright and Database right 2015. All rights reserved. Ordnance Survey licence number 100059637

Note:

1. All dimensions are in metres (m) unless clearly noted otherwise.
2. All levels are in metres Above Tinned Datum (mATD).
3. The drawing should not be scaled. If in doubt contact the designer.

- Site Boundary
- Gas Main
- Gas Main Exclusion Zone
- Surface Water Drainage
- Foul Drainage
- Constraint Elements
- Hard Standing Area
- Proposed Tree
- Crane and Slew Radius

Existing Utilities

3m Exclusion Zone

6m Exclusion Zone

Gas Main

Scale 1:200@A1

10 m 0 10 m

First Issue

Checked: AFER
Approved: MRA

For acceptance

P01

S4



Proposed design changes after draft submission

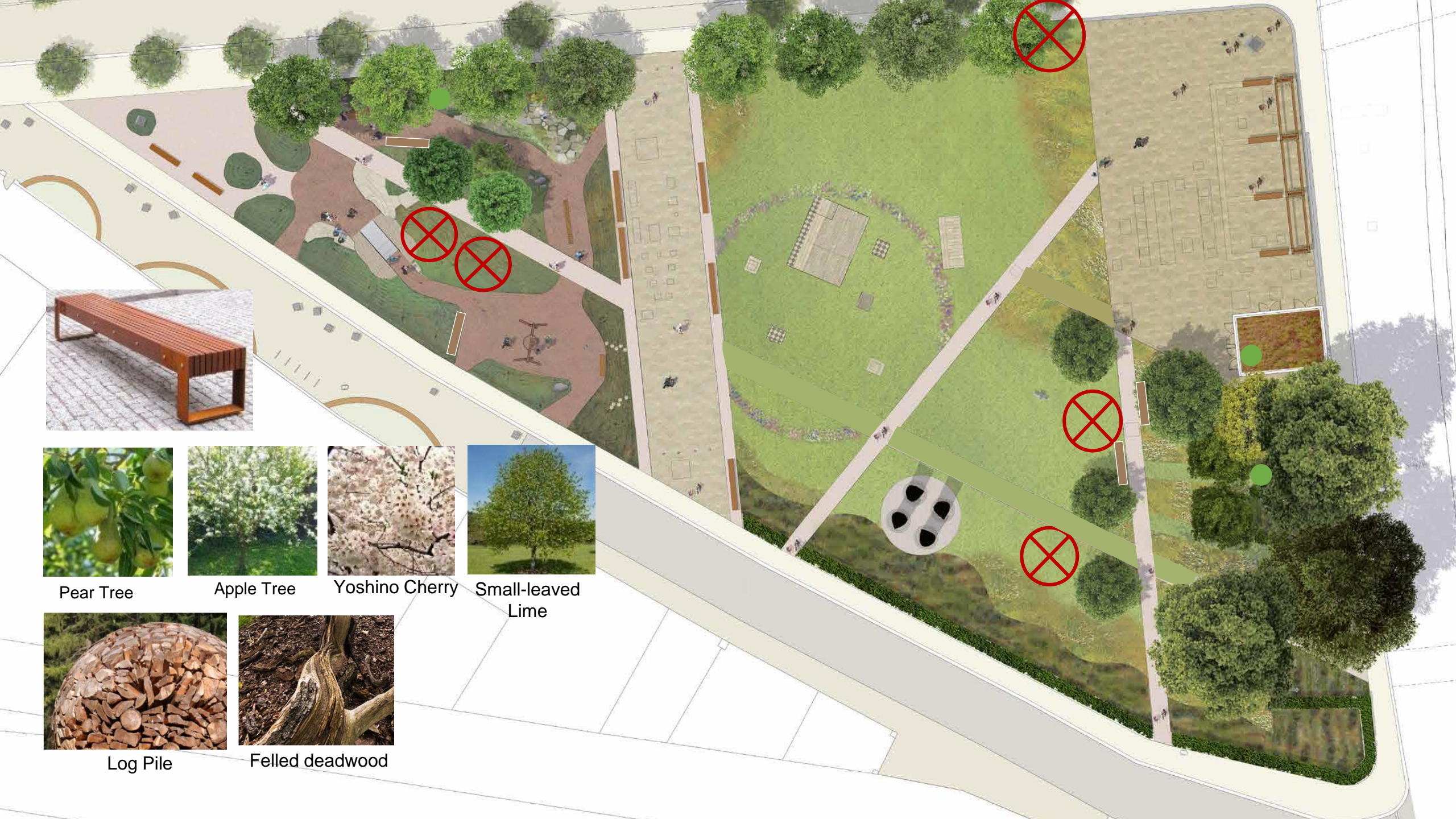
Two pathways to be removed

Additional 5 trees

- 1 Prunus x yedoensis 'Somei-yoshino'
- 1 Acer campestre
- 1 Tilia cordata
- 1 Malus domestica James Grieve
- 1 Pyrus 'Anjou' (self fertile)

Additional street furniture

- 4 Type B benches
- 2 log piles
- 2 deadwoods



Pear Tree



Apple Tree



Yoshino Cherry



Small-leaved
Lime



Log Pile



Felled deadwood



Updated Submission Timeline

Schedule 3 & TCPA Submission	Timeframe
Draft application submitted (DC/22/126198)	31 March 2022
Comment Period and Consultation on Draft closed	29 April 2022
Formal Submission (8 weeks)	July 2022
Decision	September 2022

How to view application documents and comment on the application

- Visit the [London Borough of Lewisham](#) website
- Navigate to the '[Find and comment on planning applications](#)' page and search using the application reference above.



**COMMUNITY
INVESTMENT
AND LEGACY**

Work Experience and STEM Support



- MP Jesse Norman visited Chambers Wharf last week and dropped in on a work experience session,
- We have had a 7 work experience placement across all our sites, since the beginning of June 2022

STEM Support at the LDE UTC



- volunteer staff at the London Design & Engineering UTC for the visit of the Minister of Skills and Apprenticeships: Alex Burghart MP and Chairman of the Baker Dearing Trust: Lord Baker

Tideway East commitment to volunteering...

- Staff from Chambers Wharf undertook a 5km indoor row on 25th May and a 5km walk on 31st May as part of the [AHOY5KMay](#) challenge
- The Ahoy Centre charity, based in Deptford, supports disadvantaged people and adults with complex needs, through water sports.
- Other staff ran 5 km for the charity.



STEM Activities

- Staff were at Royal Docks with charity London Youth Rowing to support pupils with Life Skills on and off the water.
- Tideway took part in the Oarsome challenge on behalf of partner charity London Youth Rowers. The event took place on 7th July, and the teams raised over £40,000.



- Tideway East staff received thanks from the Creekside Education Trust for STEM sessions delivered to year 7 students



- Tideway East have been collaborating with Charity 15billionebp for their Building Opportunities and Skills Seminars events in east London schools.
- Staff delivered several sessions to 14 and 15 year olds on CV writing, interview presentation and identifying skills for the workplace.
- Tideway Environmental Team also collaborated on a new environment jobs theme for their World of Work programme for primary school children.



Volunteering & Fundraising

- Our staff took part again in Thames 21 foreshore clean ups, this time Putney MP Fleur Anderson was in attendance, helping Thames 21 with their Citizen Science project
- Construction Superintendent for Tideway East walked from Twickenham to Excel to mark the start of National Construction Week and raise sponsorship for the Construction Sport Foundation (over £4,350)
- Our first staff member has announced he will be running the London Marathon this Autumn, raising funds for the Wellchild charity
- Senior General Foreman raised over £2,000 for the British Heart Foundation when completing the annual London to Brighton bike ride last month
- The Chambers Wharf site team bake sale raised over £600 for construction mental health charity Lighthouse



MITIGATION



Tideway



MITIGATION - making a claim if affected by Tideway's work



Who do I go to for advice?

For personal assistance contact our Helpdesk: 08000 30 80 80 or helpdesk@tideway.london

For independent advice contact Independent Advisory Service (IAS) Helpline: 0800 917 8845 or info@tidewayias.co.uk

How do I submit my claim?

The Helpdesk can submit your claim to the Independent Compensation Panel (ICP) on your behalf, or you can submit your claim direct to the ICP: admin@tidewayicp.london

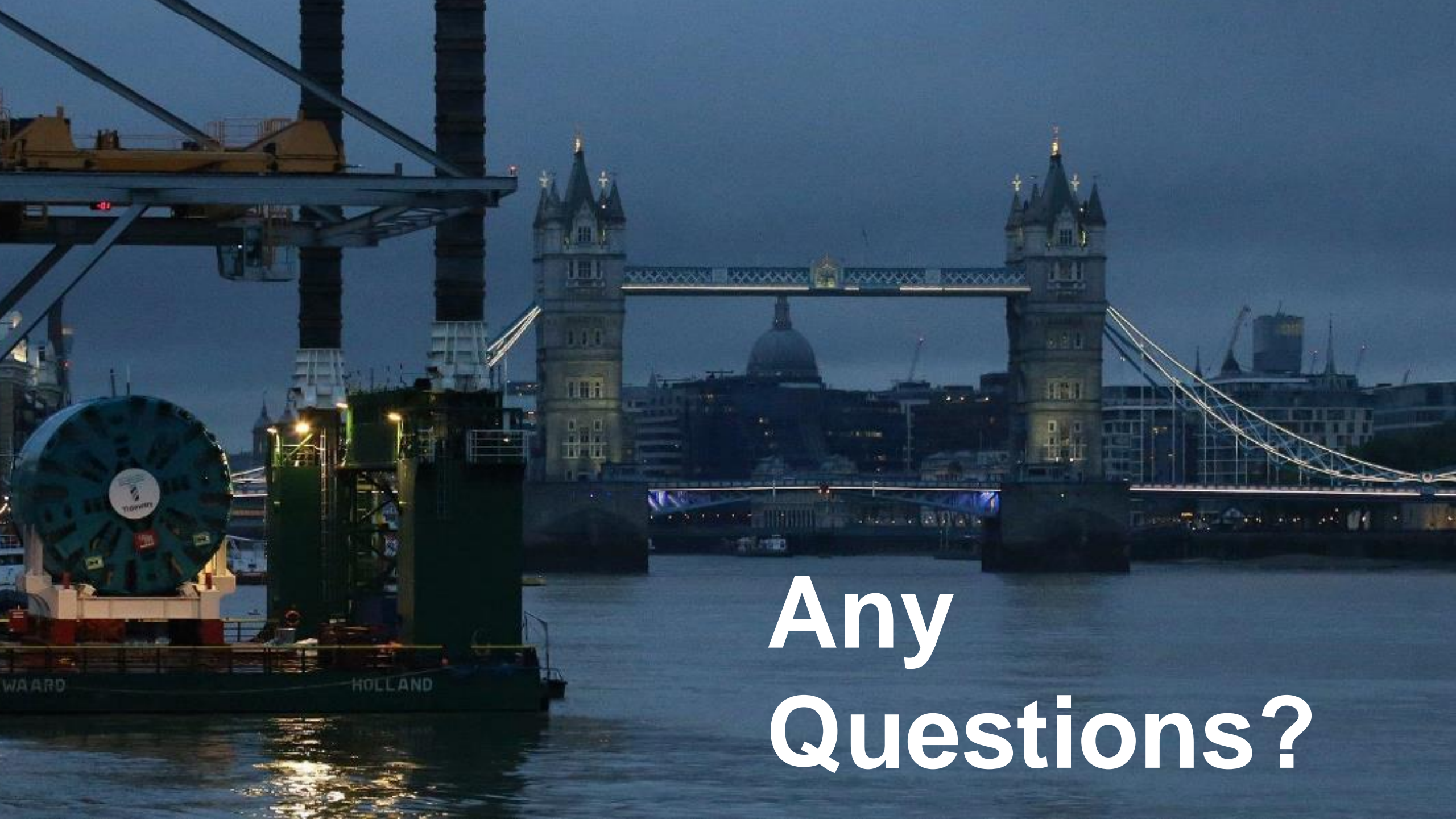
You can download the claim form from the Tideway website:

www.tideway.london/help-advice/compensation-information/Independent-Compensation-Panel

CONTACT US



- If you do have any questions or enquiries, please contact the Tideway Helpdesk:
- Telephone: **0800 030 80 80**
- Email: **Helpdesk@Tideway.London**



Any
Questions?



Tideway

RECONNECTING LONDON WITH THE RIVER THAMES

#SuperSewer

www.tideway.london