

# KING EDWARD MEMORIAL PARK FORESHORE

Community Liaison Working Group

14 November 2022



Tideway



# CONSTRUCTION UPDATE

## SHAFT AND ADIT



### June to October 2022

- Vortex landing installation
- Adit Excavation Works  
(24 hours shift pattern)
- Finishing works at the bottom of the Shaft

## Combined Sewer Overflow (CSO)



### June to October 2022

- Working on internal walls and Roof Slab
- Benching works

## River Wall - Hinterland

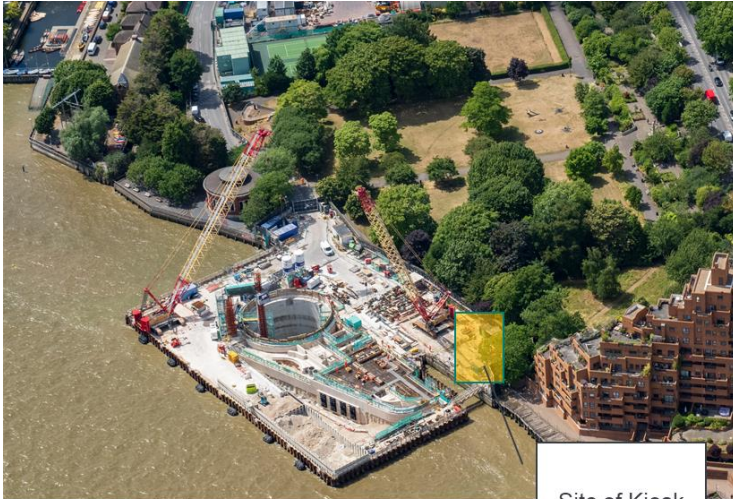


### October 2022

- Eastern Hinterland – Excavation complete
- Ready for installation of precast cladding for the river wall

# UPCOMING WORKS

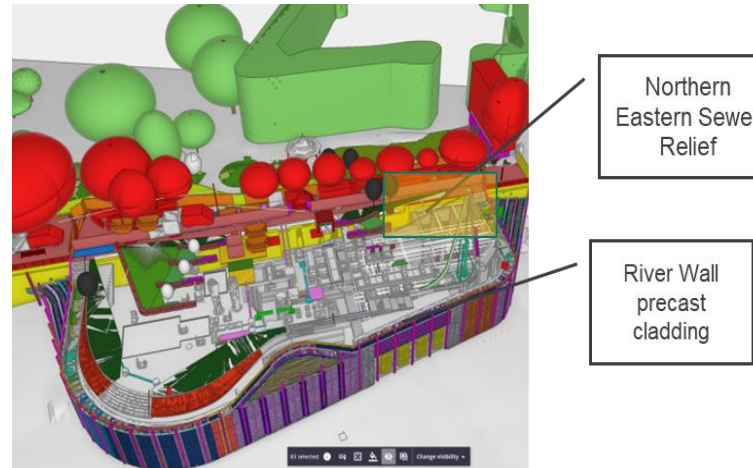
## THE NEXT 6 MONTHS



Site of Kiosk

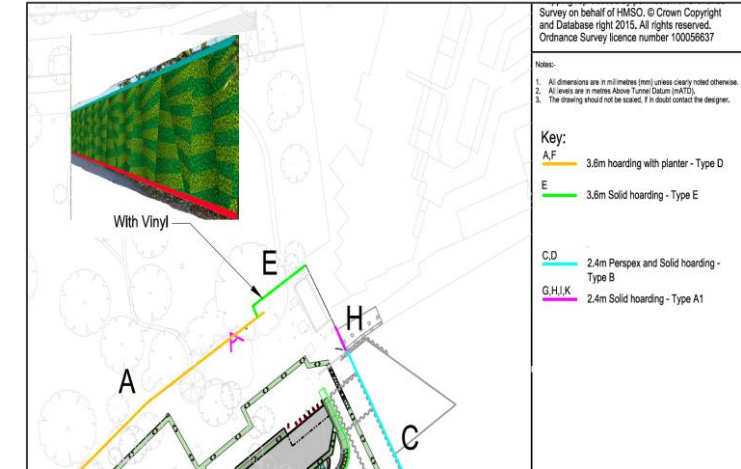
### Kiosk Works

- Completion of trial holes – Nov. 2022
- Tree pruning – Dec. 2022
- Removal of 3 trees - Jan. 2023
- Hoarding Installation – Jan. 2023
- Enabling works for Kiosk - Feb. 2023
- Begin Kiosk construction - March 2023



### Northern Eastern Sewer Relief (NESR) & Hinterland

- Northern Eastern Sewer Relief construction works – April 2022
- Excavation of Western hinterland. Installation of river wall precast cladding – April 2022



### Hoarding Realignment

- Relocated 3.6m high hoarding at south-eastern corner of the park (green line)
- New 2.4m high hoarding along the Thames Path, aligned with the existing boundary wall (pink line)
- The existing boundary wall between Free Trade Wharf (FTW) and the site will have acoustic mitigation by either acoustic blankets or the installation of Perspex, where there are openings
- Further heras fencing in line with the future hoarding line to create a safer space



# Environment: Noise & Air Quality

## Section 61 Overview



### Actual Working Hours

**Standard hours:** 08:00-18:00 (Monday to Saturday)

**Extended hours:** 05:00 to 08:00 and 18:00 to 22:00 (Monday to Friday)

Including:

- Large concrete pours.
- Services, work at height and access installation and removals.
- Repair works on the existing sewer and cofferdam.
- Drainage and excavation dewatering.
- Barge movements.

**Mobilisation and Demobilisation:** 07:00-08:00 & 18:00-19:00 (Standard hours)  
04:30-05:00 & 22:00-22:30 (extended hours)

- Briefings, inspections, safety start up checks, concrete wagons arriving for testing, ventilation fan switched on.

**Maintenance:** 08:00-17:00 (Saturday) 10:00-16:00 (Sunday)

- Plant maintenance and installation/maintenance of services such as dewatering

**Continuous hours (24 hour shift pattern):**

- Adit construction and connection

### Section 61 Exceedances

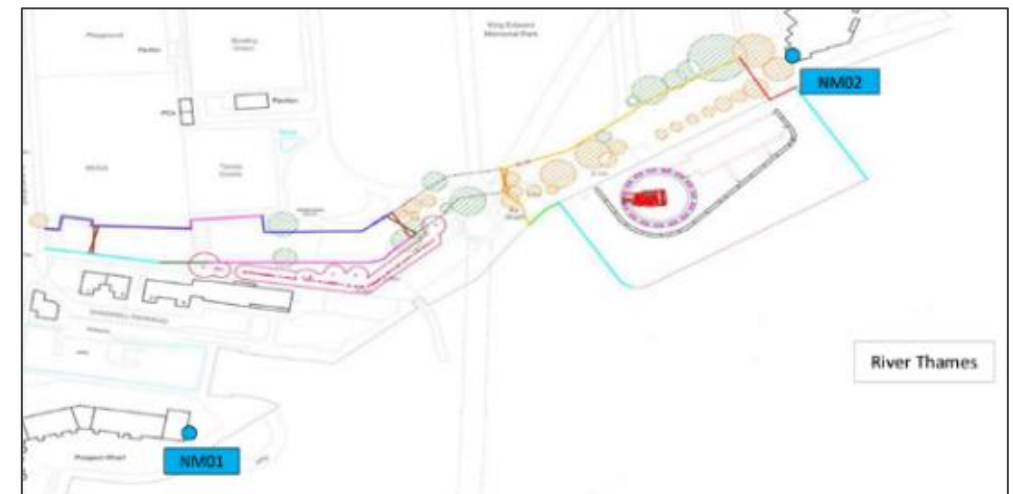
**Noise (Jun 22 - Current):**

0 out of 40 permitted TAP exceedances during 6 month period

**Air: (Jun 22- Current)**

0

### Monitoring Locations



# FORESHORE STRUCTURE



Architecture and Landscape works -  
Q1 2023 to Q3 2024



Kiosk construction -  
Q1 2023 to Q4 2023

# LEGACY: STEM & STAMINA



University of East London Careers Fair



Bounce Back - Rough Sleepers  
Supporting people at risk or homeless



Employability sessions for 15 and 16 year-olds



Bryan (R) completed the course in just over five hours, raising money for the **Lighthouse Club**, a charity that provides emotional, physical and financial wellbeing support to construction workers and their families

Pierre-Edouard (L) completed the marathon in just three hours and 20 minutes, in aid of **Wellchild**, a charity that provides care for seriously ill children and young people across the UK.



---

## London Marathon runners from Tideway East:

# MITIGATION



## Who do I go to for advice?

For personal assistance contact our Helpdesk: 08000 30 80 80 or [helpdesk@tideway.london](mailto:helpdesk@tideway.london)

For independent advice contact Independent Advisory Service (IAS) Helpline:  
0800 917 8845 or [info@tidewayias.co.uk](mailto:info@tidewayias.co.uk)

## How do I submit my claim?

The Helpdesk can submit your claim to the Independent Compensation Panel (ICP) on your behalf, or you can submit your claim direct to the ICP: [admin@tidewayicp.london](mailto:admin@tidewayicp.london)

You can download a claim form from the Tideway website:

[www.tideway.london/help-advice/compensation-information/Independent-Compensation-Panel](http://www.tideway.london/help-advice/compensation-information/Independent-Compensation-Panel)



# CONTACT US



If you have any questions or enquiries, please contact:

## **Tideway Helpdesk**

Telephone: **0800 030 80 80**

Email: **[Helpdesk@Tideway.London](mailto:Helpdesk@Tideway.London)**



**Tideway**

# **RECONNECTING LONDON WITH THE RIVER THAMES**

**#SuperSewer**

[www.tideway.london](http://www.tideway.london)