

ACTON STORM TANKS

Community Liaison Working Group

Monday 27 February 2023



Tideway

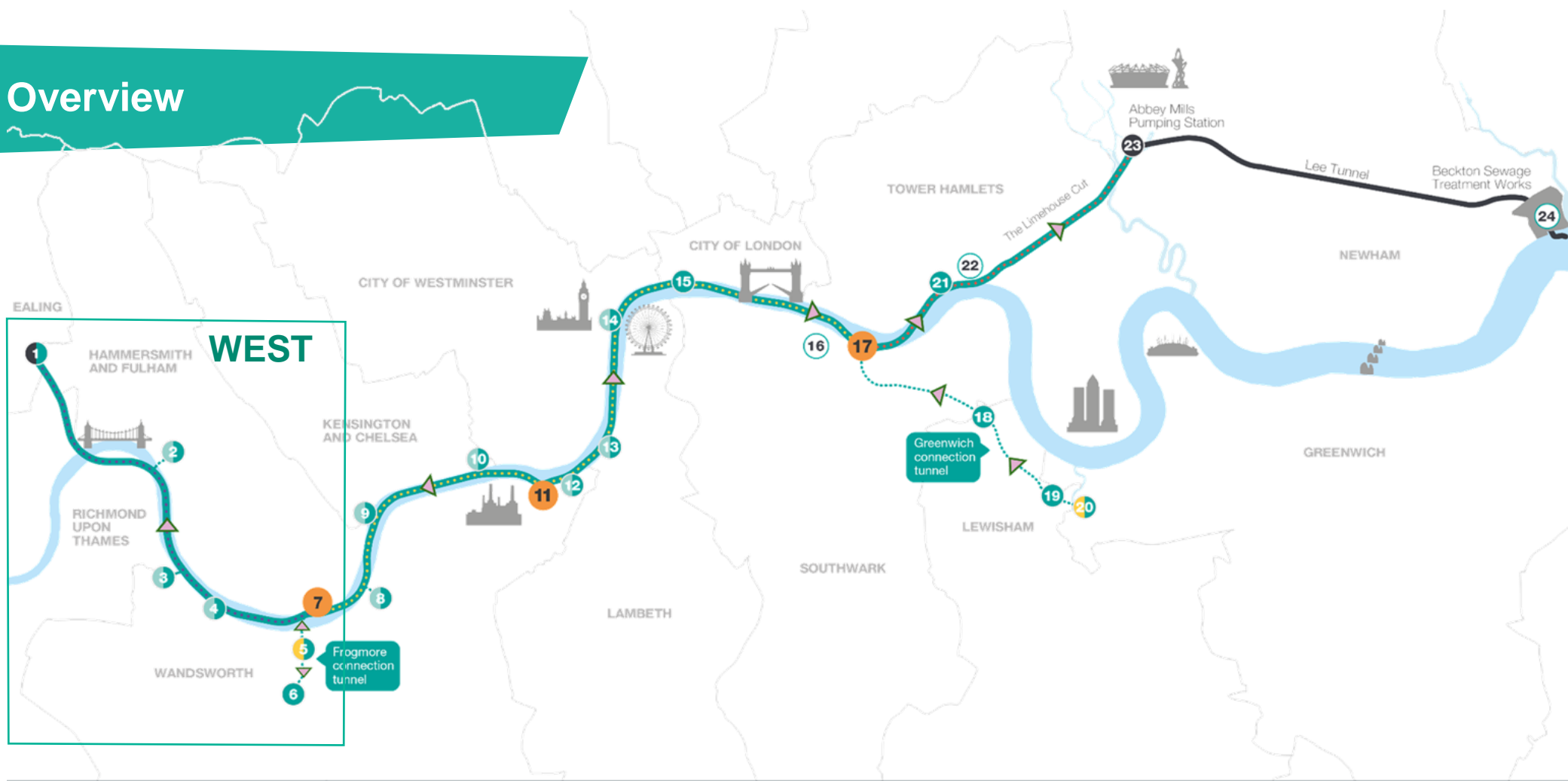




WELCOME

Michelle Murphy, Section Manager

Tideway Overview



Map key

- | | | | | |
|------------------------------------|--------------------------|-----------------------------|-------------------------------|-------------------------------------|
| Main tunnel drive tunnel site | Main tunnel | Acton Storm Tanks | Cremorne Wharf Depot | Chambers Wharf |
| Main tunnel reception site | Connection Tunnels | Hammersmith Pumping Station | Chelsea Embankment Foreshore | Earl Pumping Station |
| CSO site | Lee Tunnel | Barn Elms | Kirtling Street | Deptford Church Street |
| Short connection tunnel drive site | Proposed drive direction | Putney Embankment Foreshore | Heathwall Pumping Station | Greenwich Pumping Station |
| Long connection tunnel drive site | West works site | Dormay Street | Albert Embankment Foreshore | King Edward Memorial Park Foreshore |
| System modifications | Central works sites | King George's Park | Victoria Embankment Foreshore | Bekesbourne Street |
| | East works site | Carnwath Road Riverside | Blackfriars Bridge Foreshore | Abbey Mills Pumping Station |
| | | Falconbrook Pumping Station | Shad Thames Pumping Station | Beckton Sewage Treatment Works |

Acton Storm Tanks

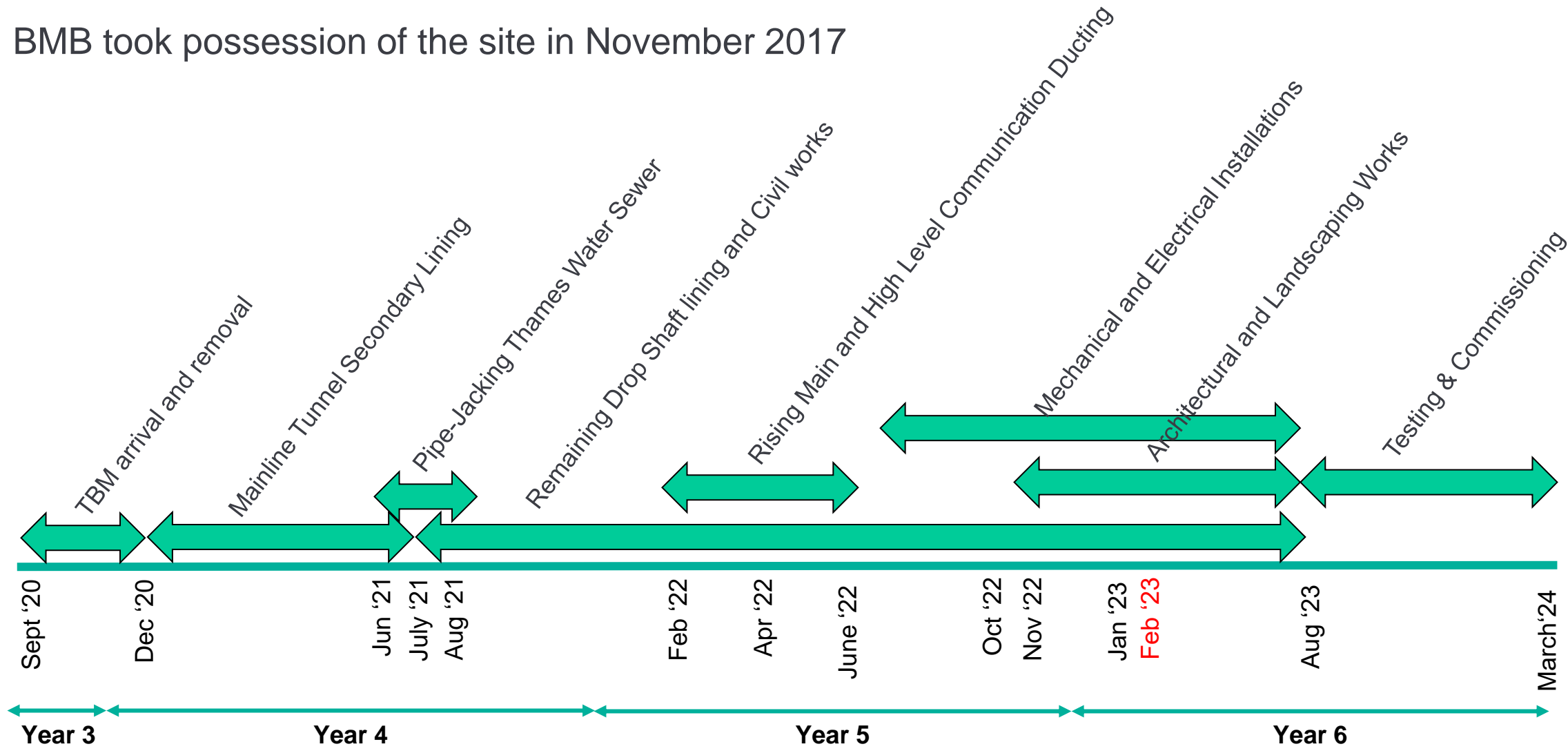


Problem
29 discharges per year
312,000t sewage

Solution
Thames Tideway Tunnel
No expected discharges

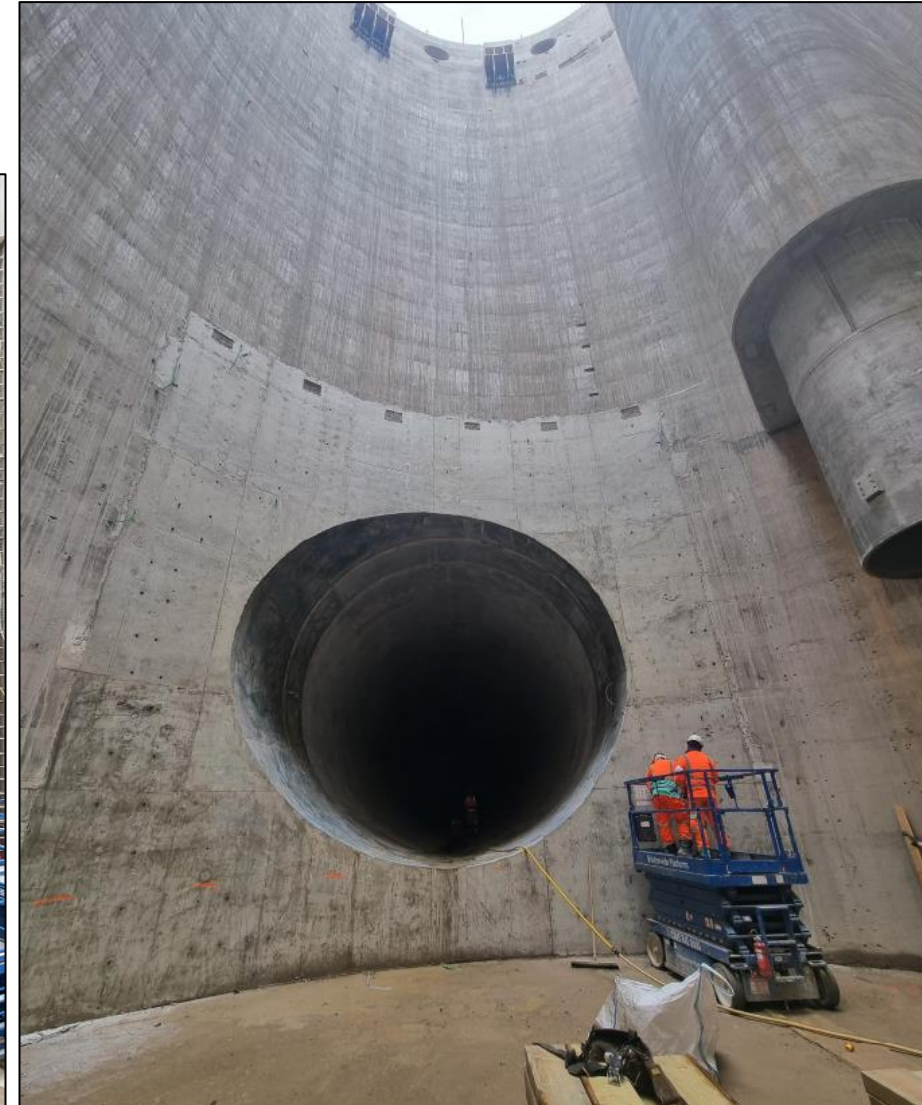
Timeline

- BMB took possession of the site in November 2017



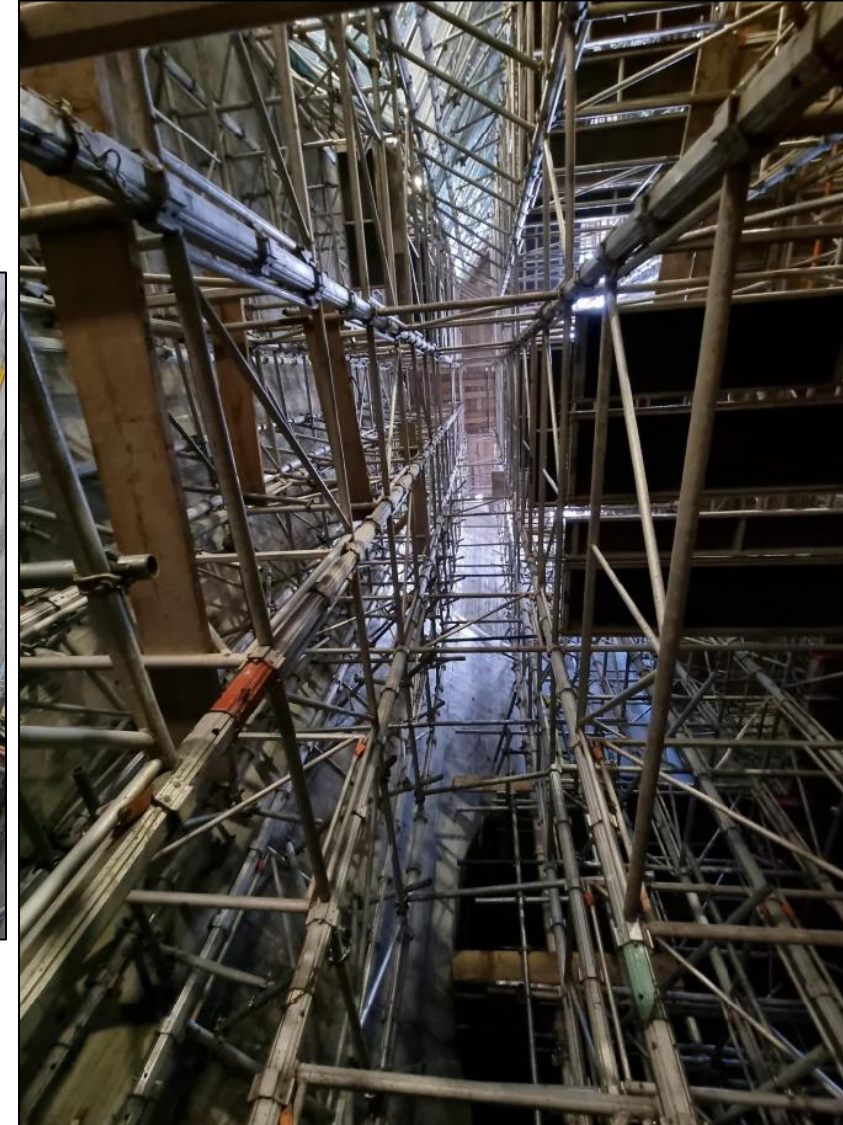
Acton Storm Tanks – Shaft Progress

- MNTLA Portal
 - Completed installation of reinforcement and MNTLA drum shutter and cast Portal



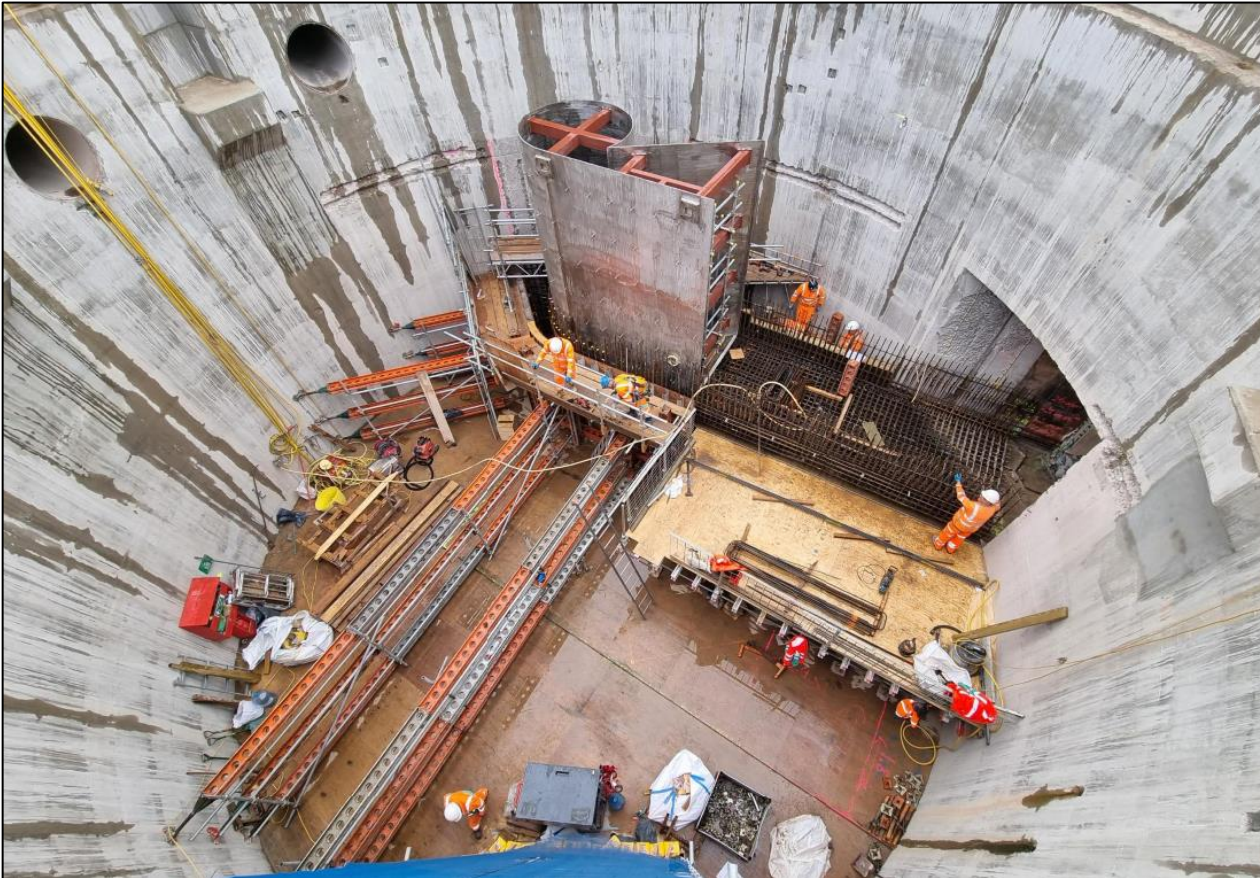
Acton Storm Tanks – Shaft Progress

- Shaft
 - Completed shaft internal walls
 - Installed full shaft decking



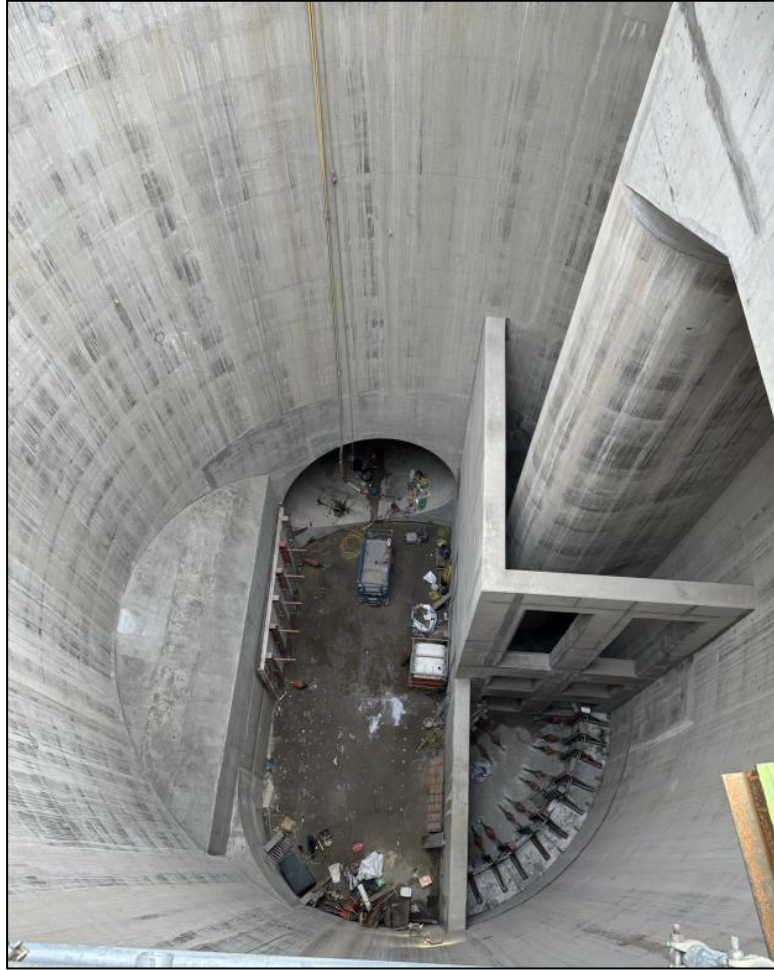
Acton Storm Tanks – Shaft Progress

- Shaft
 - Installed Vortex Generator
 - Cast Vortex Bridge structure



Acton Storm Tanks – Shaft Progress

- Completed the large 9m benching.
- Installed the two 40t beams for the shaft roof.



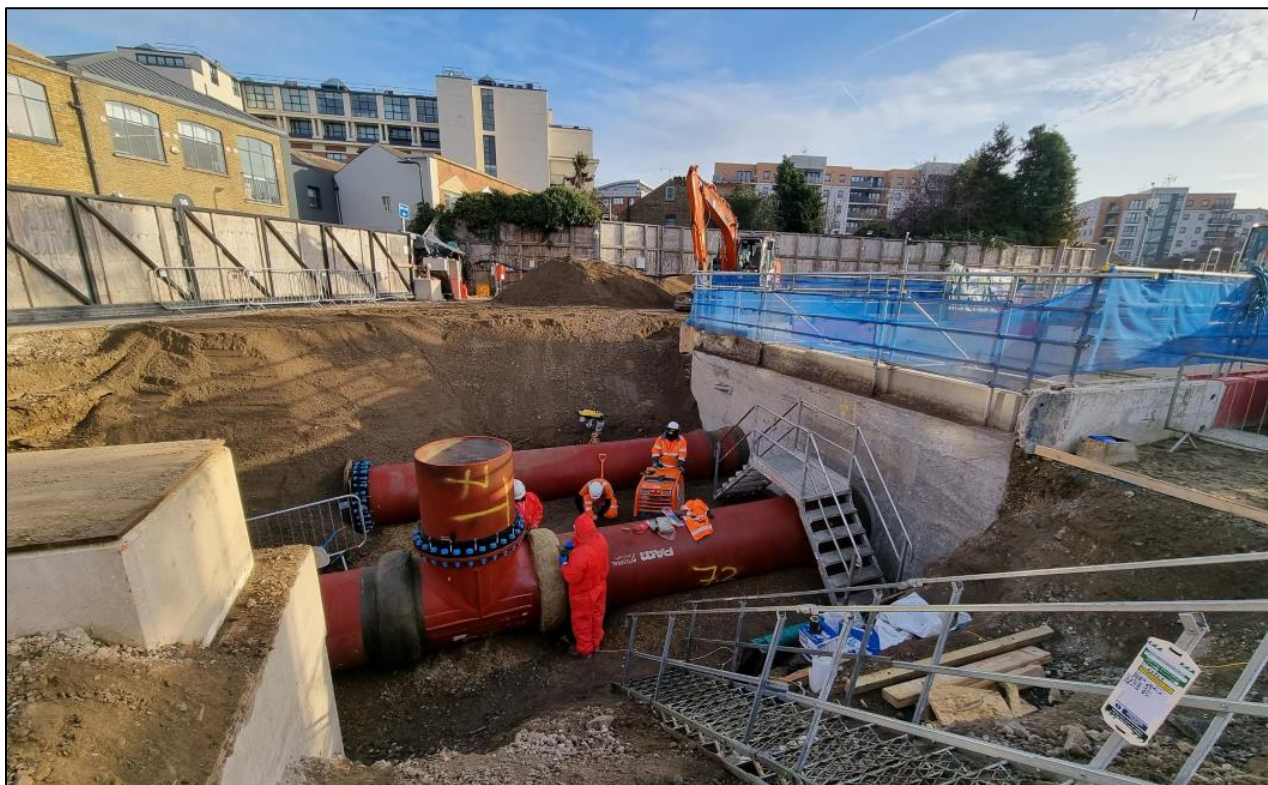
Acton Storm Tanks – Surface Progress

- Completed the Ventilation Fan Pad
- MEICA – Completed installation of access covers and ladders.



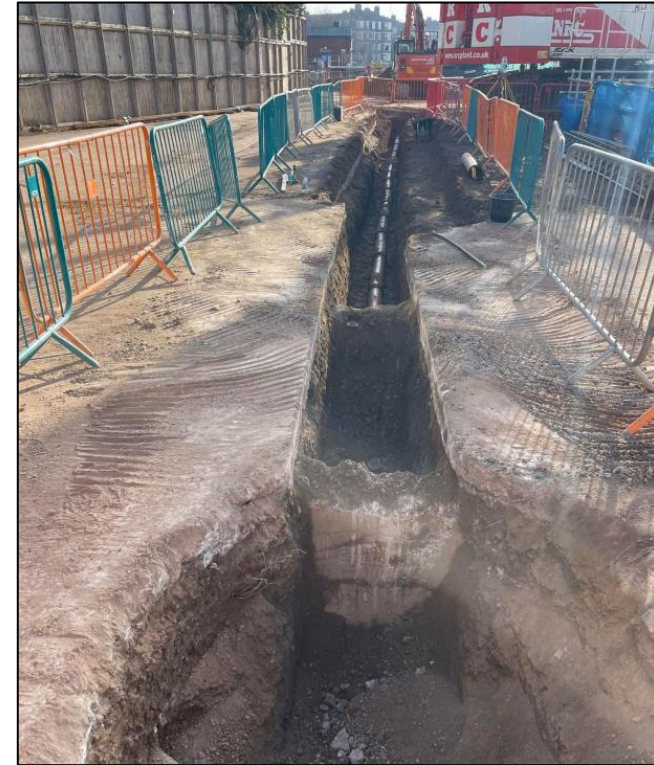
Acton Storm Tanks – Surface Progress

- Completed installation of Ventilation and High Level Ducting.



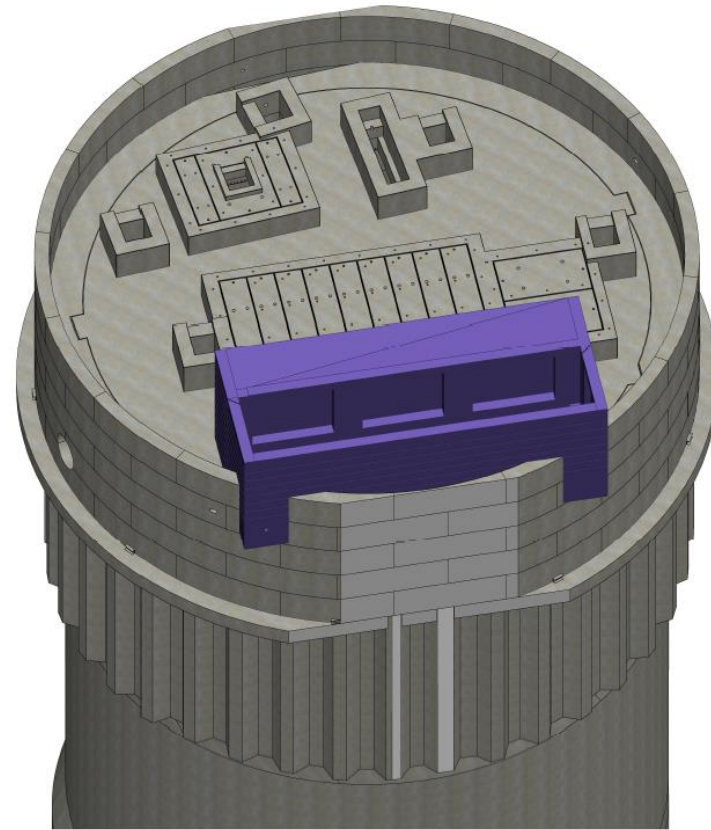
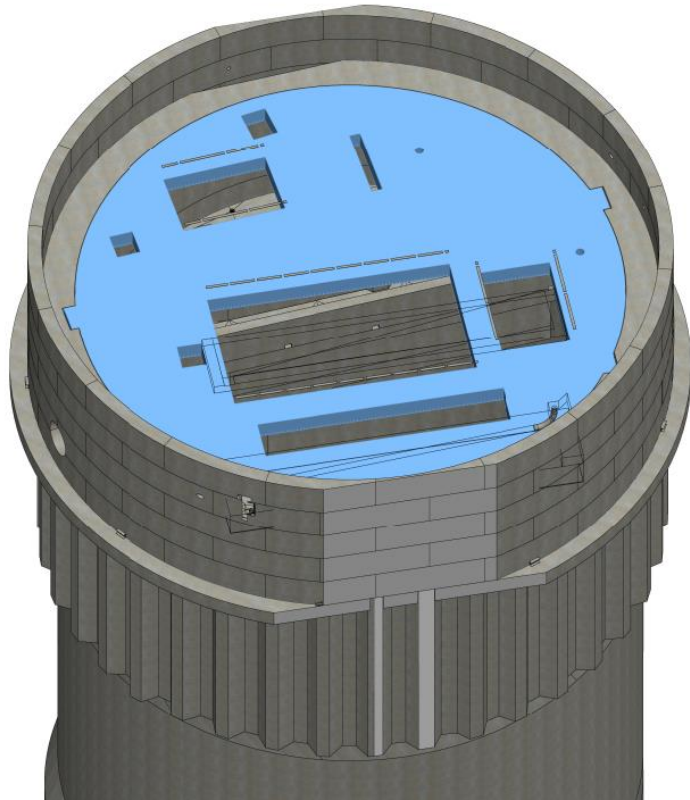
Acton Storm Tanks – Surface Progress

- Commenced the installation of the SUDs Pond
- Completed the main drainage installation for site.
- MEICA – Installed the carbon cassettes in the Air Treatment Chamber.



Acton Storm Tanks – Coming Up

- Complete Benching February 23
- Shaft Cover Slab March 23
- Pressure Relief Structure May 23



Acton Storm Tanks – Coming Up

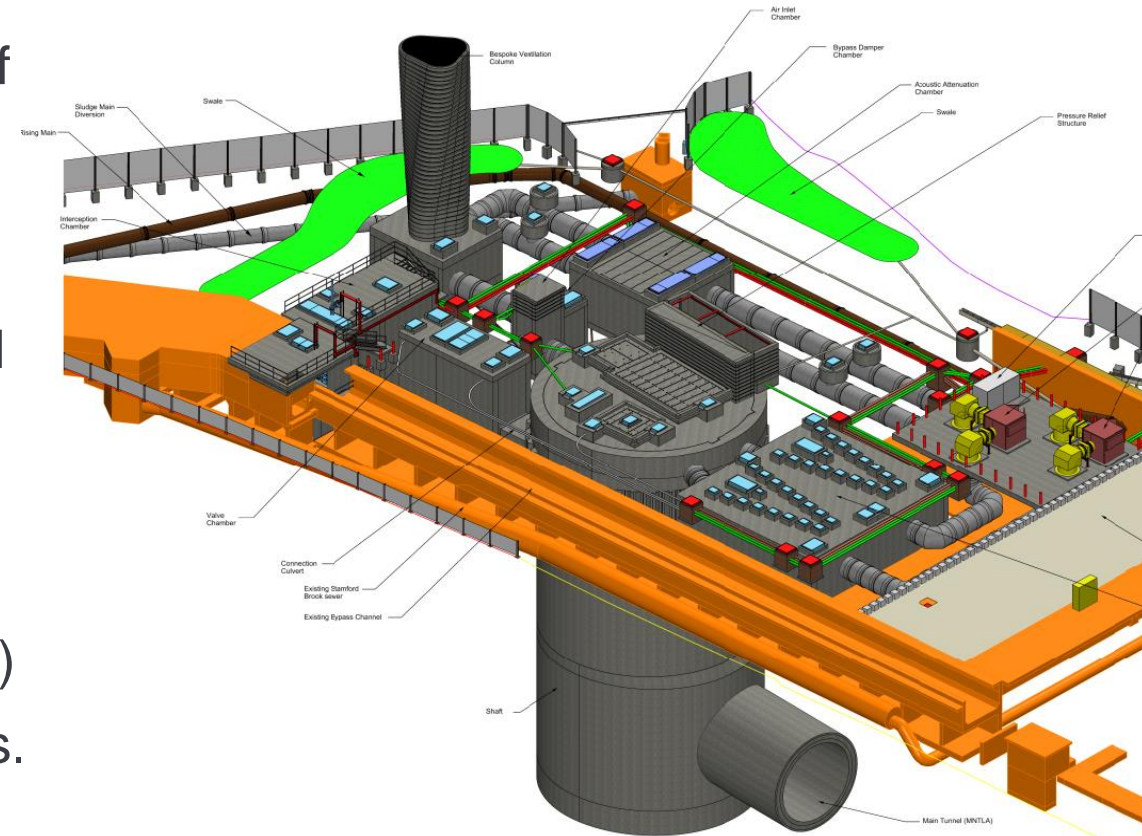
- Ventilation Column to be installed end of February.
- Hoarding to commence March /April.
- Planting to commence in early April.
- Statues to be installed May.



Testing & Commissioning

Work activities you may see during system testing and commissioning which will be carried out between end of 2023 / 2024 include:

- Presence on site, for example periodic maintenance activities i.e. exercising penstocks and flat valves and routine testing of electrical systems.
- Landscaping / garden type maintenance
- 24/7 Security patrols
- Site inspections / audits (staff walking around the site)
- Vehicles accessing and leaving the site. i.e. deliveries.



COMMUNITY ENGAGEMENT

Anne-Marie Brannigan, Communications Manager

Community Engagement

5 complaints have been received:

- 4 x noise and vibration
- 1 x lighting

4 general enquiries have also been received relating to the project in general

All enquiries have been responded to within 24 hours (where possible) and if needed, in collaboration with Thames Water

As our work progresses and we move onto the testing and commissioning phase what you can expect from us?

- Notification as to the completion of our construction works
- Information regarding the testing phase and what this will look like
- Information regarding any community events that will take place



Tideway

Call: 08000 30 80 80

Email: helpdesk@tideway.london

Write to: Freepost TIDEWAY



0800 316 9800

Available 24/7 to answer all enquiries & complaints related to the operations and maintenance of the site

Community Engagement

Our community support continues;

- 595 volunteering hours undertaken across the project - including support for STEM activities and local community groups
- Engagement with the local foodbank and supporting them by clearing litter in the area for Hammersmith and Fulham foodbank
- Preparation and donation of over 40 reconditioned laptops for various community groups.
- Construction of raised flower/veg patch beds and other support to the gardens at a community hub for the elderly in Hammersmith.
- Further works carried out at Acton Scout Hut.

Please contact us if you are aware of an opportunity or community group that we could possibly help.



How To Make A Claim if Affected By Tideway's Work

Who do I go to for advice?

Independent Advisory Service (IAS) Helpline for independent advice:

- 0800 917 8845 or info@tidewayias.co.uk
- Tideway's Helpdesk: 08000 30 80 80 / helpdesk@tideway.london

How do I submit my claim?

You can submit your claim directly to the Independent Compensation Panel (ICP):
admin@tidewayicp.london

The IAS can send you a claim form, or you can download the form off the Tideway website:
www.tideway.london/help-advice/compensation-information/Independent-Compensation-Panel

How To Stay Up To Date

Follow us on social media: [@TidewayLondon](#)



en-gb.facebook.com/TidewayLondon/



www.instagram.com/tidewaylondon/



www.linkedin.com/company/tideway-london/



twitter.com/TidewayLondon



Tideway

RECONNECTING LONDON WITH THE RIVER THAMES

#SuperSewer

www.tideway.london