

GREENWICH PUMPING STATION & DEPTFORD CHURCH STREET COMMUNITY LIAISON WORKING GROUP



Tideway



Date: 7 February 2023

Agenda

| Topic | Lead |
|---|---|
| Welcome, introductions and Project overview | Emily Black, Tideway |
| Greenwich Pumping Station <ul style="list-style-type: none">• Construction update and future programme• Noise and air quality Deptford Church Street <ul style="list-style-type: none">• Construction update and future programme• Consents update• Noise and air quality General <ul style="list-style-type: none">• Legacy and Community Investment• Mitigation | Lucas Truflandier, CVB Lydia Claxton, CVB Audric Rivaud, CVB Lydia Claxton, CVB Martin Griffiths, CVB Emily Black, Tideway |
| Feedback and discussion | All |
| Any other business | All |

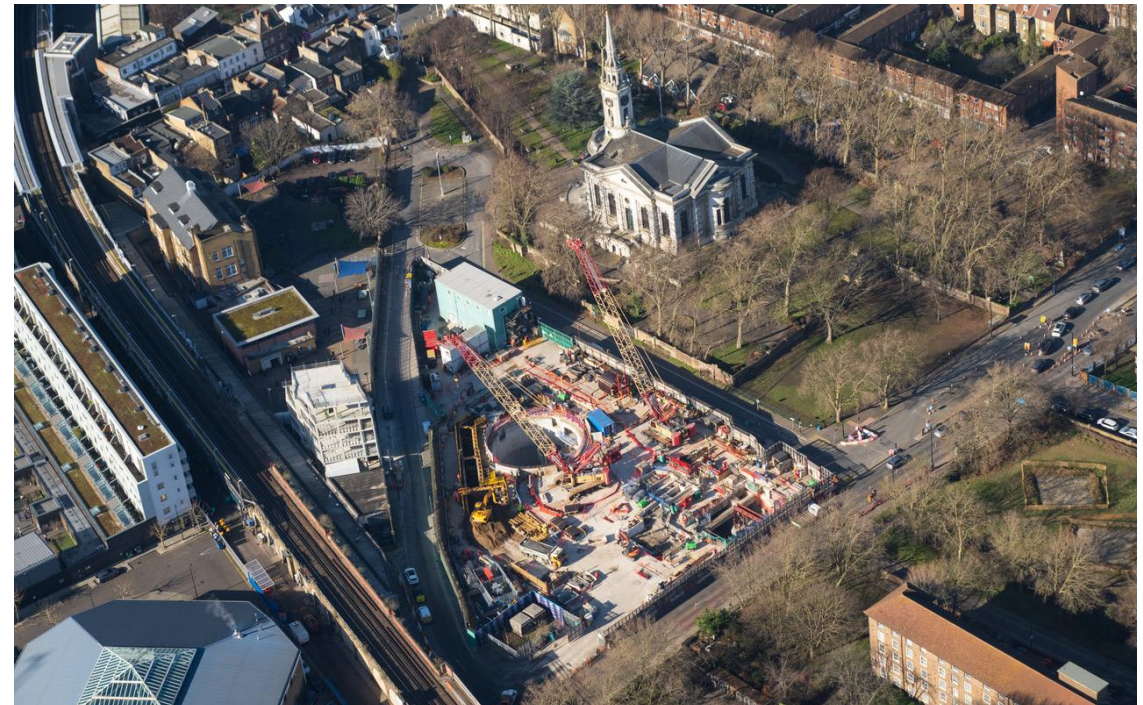
PROJECT OVERVIEW



| | | | |
|--|---|---|---|
| <p>BMB WEST</p> | <p>FLO CENTRAL</p> | <p>CVB EAST</p> | <p>16 Shad Thames Pumping Station 22 Bekesbourne Street 24 Beckton Sewage Treatment Works</p> |
| <ul style="list-style-type: none"> 1 Acton Storm Tanks 2 Hammersmith Pumping Station 3 Barn Elms 4 Putney Embankment Foreshore 5 Dornay Street 6 King George's Park 7 Carnwath Road Riverside | <ul style="list-style-type: none"> 8 Falconbrook Pumping Station 9 Cremorne Wharf Depot 10 Chelsea Embankment Foreshore 11 Kirtling Street 12 Heathwall Pumping Station 13 Albert Embankment Foreshore 14 Victoria Embankment Foreshore 15 Blackfriars Bridge Foreshore | <ul style="list-style-type: none"> 17 Chambers Wharf 18 Earl Pumping Station 19 Deptford Church Street 20 Greenwich Pumping Station 21 King Edward Memorial Park Foreshore 23 Abbey Mills Pumping Station | <p>MAP KEY</p> <ul style="list-style-type: none"> ● Main tunnel drive tunnel site ● Main tunnel reception site ● CSO site ● Short connection tunnel drive site ● Long connection tunnel drive site ○ System modifications ■ Main tunnel ⋯ Connection Tunnels — Lee Tunnel ◀▶ Proposed drive direction ● West works site ● Central works sites ● East works site |

Latest progress across the project

- Primary tunnelling is now complete
- All shafts fully excavated, shafts are being secondary lined with concrete and shaft lids are going on
- Tunnel secondary lining due to complete in 2023
- System commissioning to start winter 2023/24
- Super sewer on track to be operational in 2025
- Overall project is 85% complete



GREENWICH WORKS UPDATE

Tunnel & Shaft

- Completed the tunnel secondary lining launch. Tunnel logistics removed from Greenwich site.
- Start of shaft secondary lining under continuous hours

Combined Sewer Overflow (CSO)

- Internal reinforced concrete walls on going

East Beam Engine House (EBEH)

- Completed the new permanent spanned concrete slab – completed
- Started internal refurbishment of brickworks and windows renovation

Air Treatment Chamber (ATC)

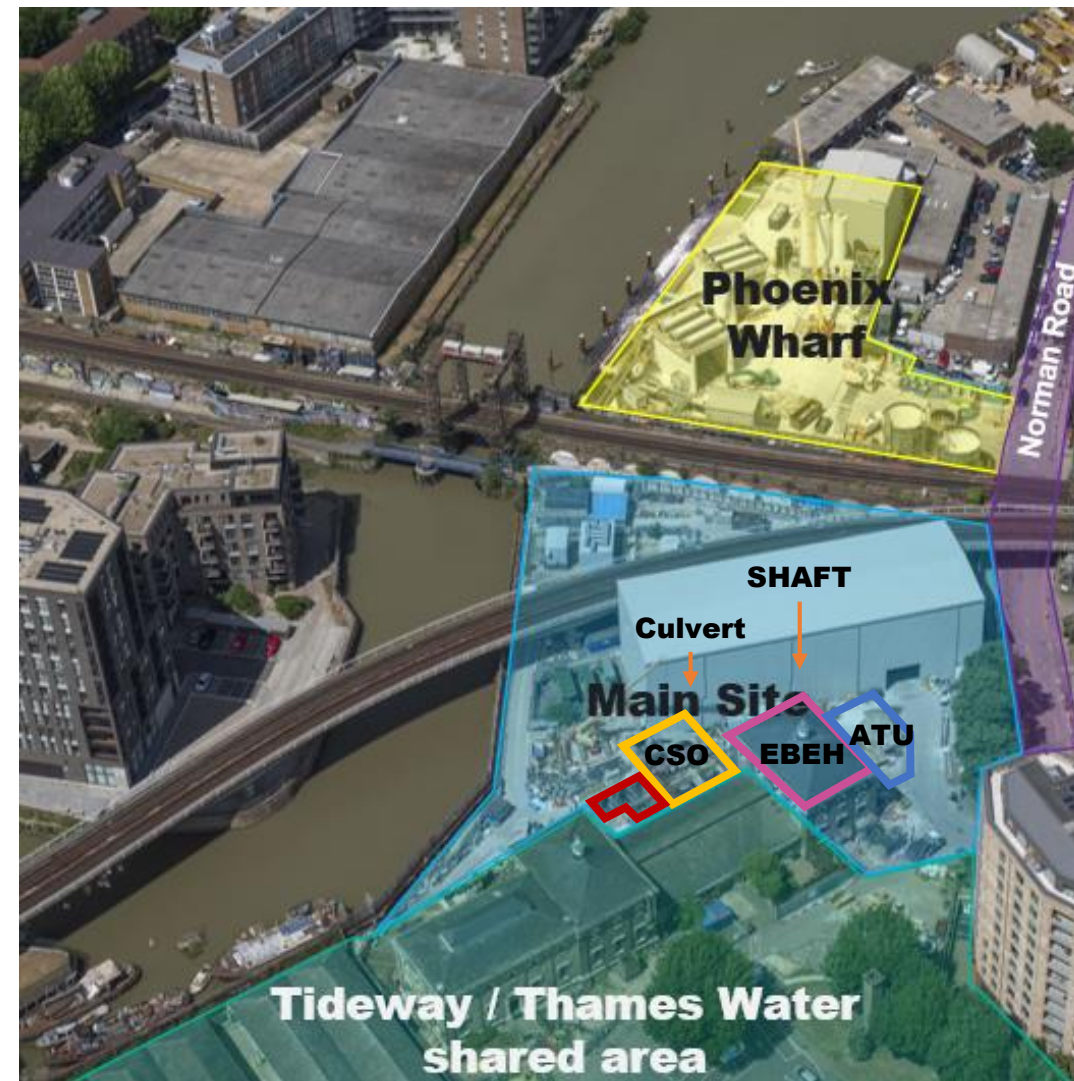
- Excavation completed in Dec 2022. Internal reinforcement concrete works on going

Culvert

- Completed enabling works for excavation (demolition of temporary concrete platform).
- Start of excavation

Phoenix Wharf

- All elements of Slurry Treatment Plan and all acoustic enclosure have been removed
- Re-start demolition of the remaining temporary concrete structures



TUNNEL



2nd lining shutter assembled



Start of 2nd lining of Greenwich Connection Tunnel



2nd lining of Greenwich Connection Tunnel – after launch



Tideway

SHAFT (INSIDE ENCLOSURE)

Vortex tube installed



1st concrete pour of secondary lining



Slipforming rig set up above shaft, under acoustic enclosure



Slipforming rig set up at pit bottom

CULVERT (INSIDE ENCLOSURE)



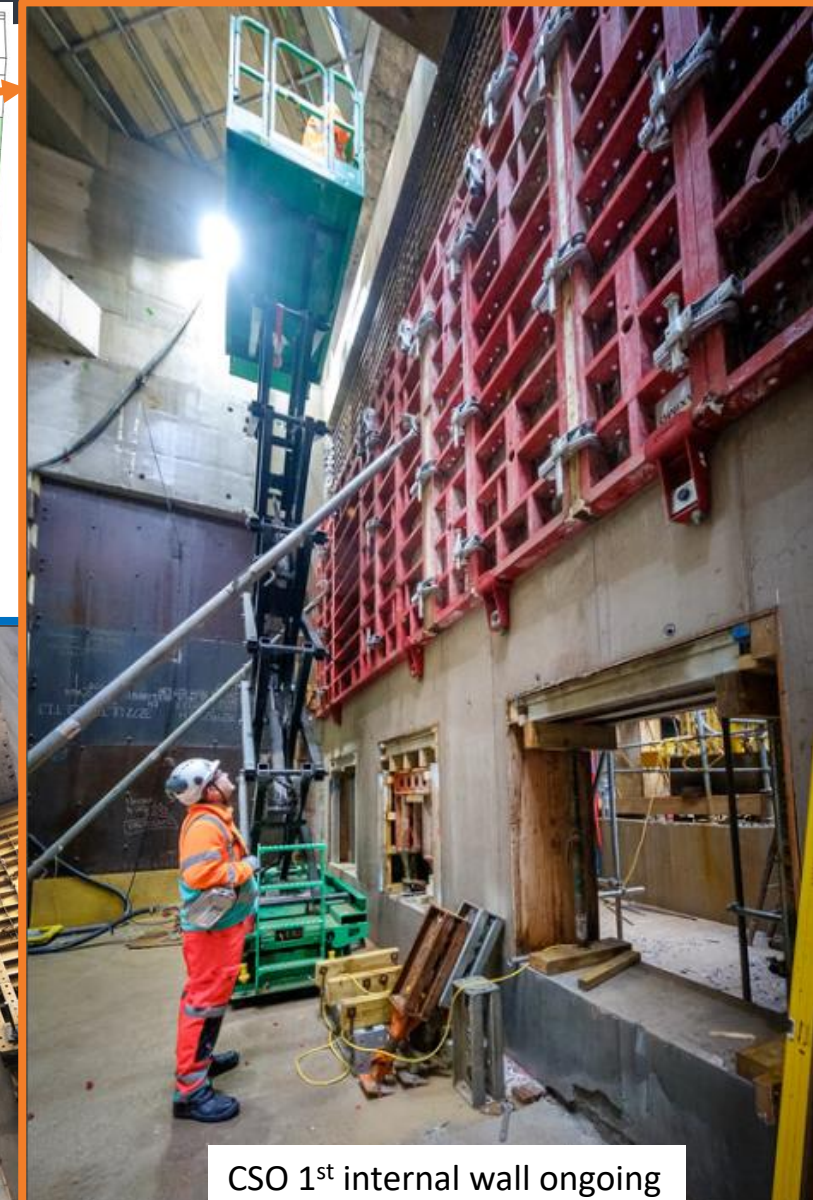
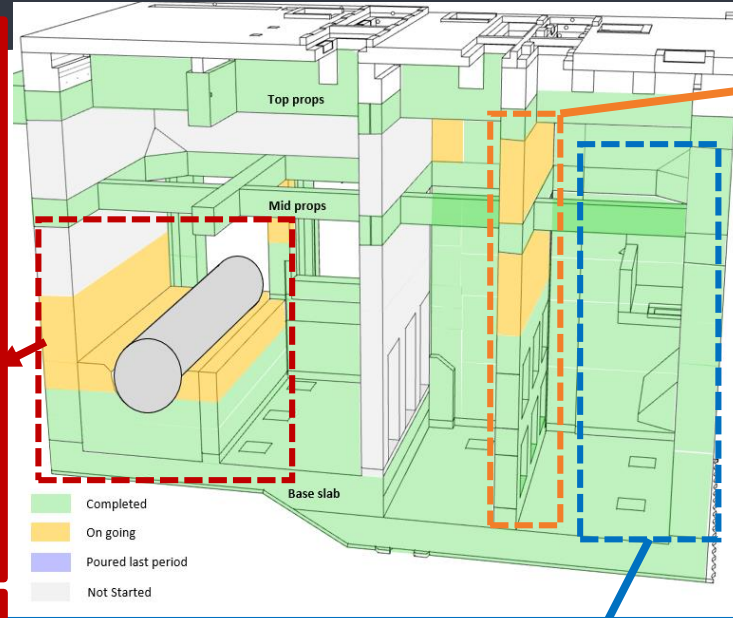
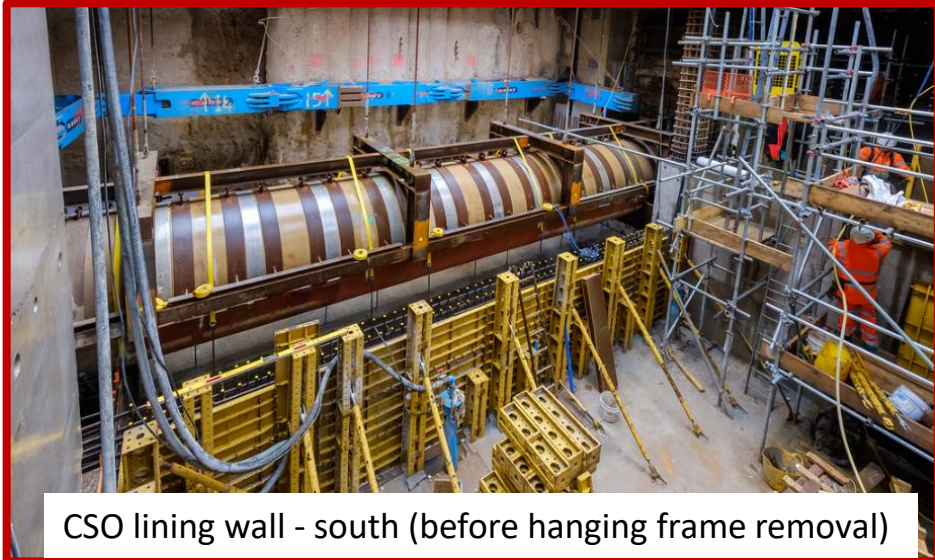
Installation of dewatering wells using drilling rig



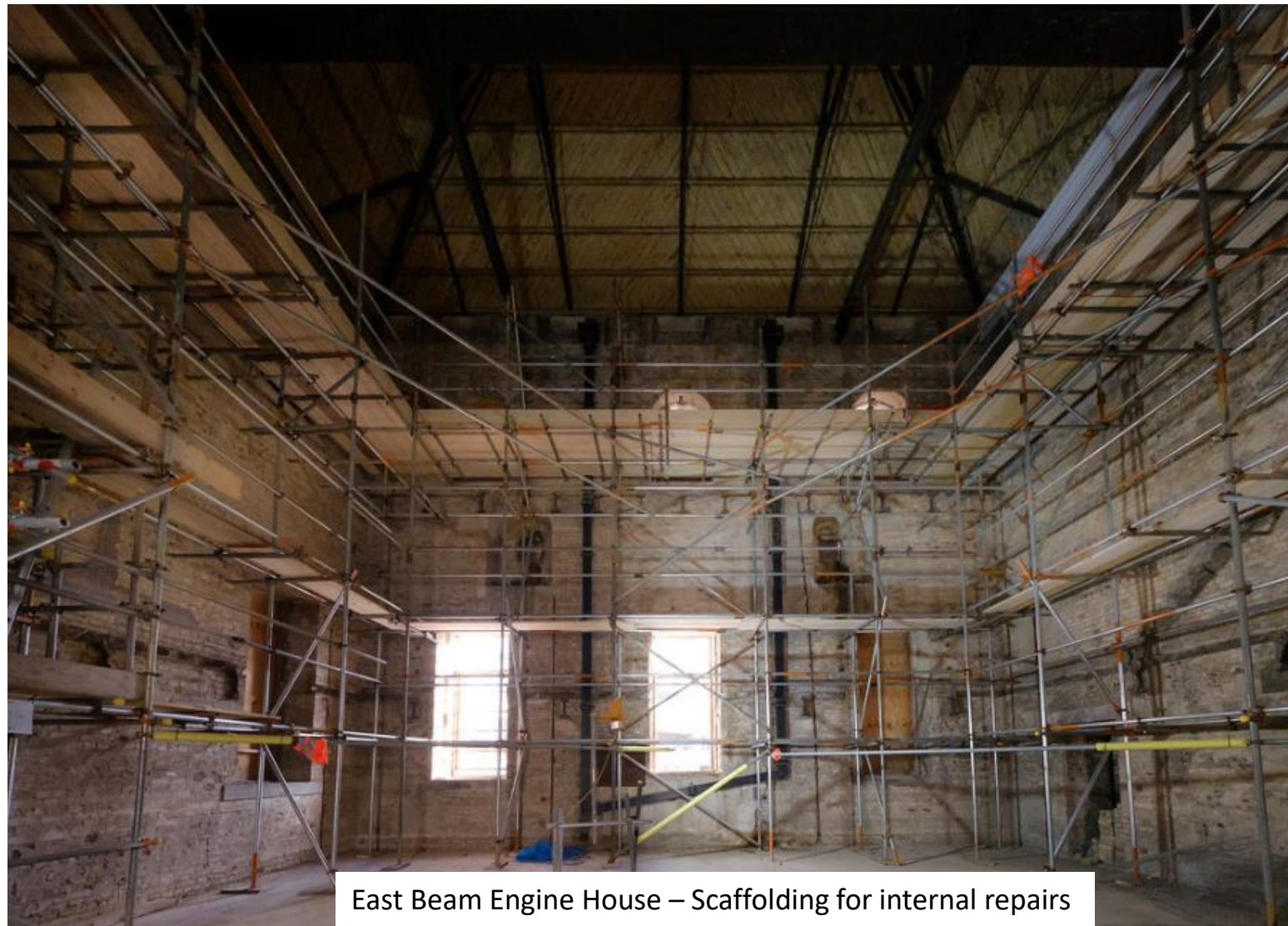
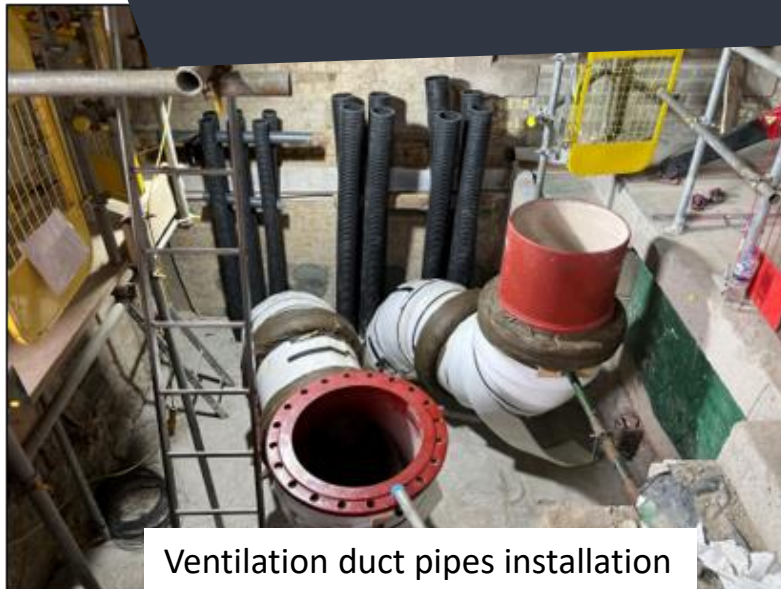
Start of installation of temporary propping (1st level)



COMBINED SEWER OVERFLOW



EAST BEAM ENGINE HOUSE



AIR TREATMENT CHAMBER



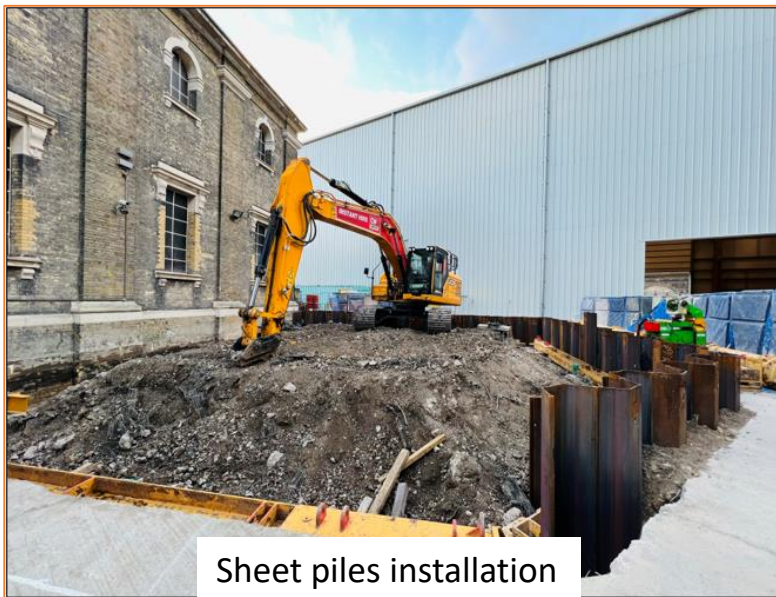
Concrete platform demolition



Excavation



Concrete base slab poured



Sheet piles installation



Temporary propping installation



Concrete wall ongoing

PHOENIX WHARF



Filter press wall demolition



Filter press wall demolition

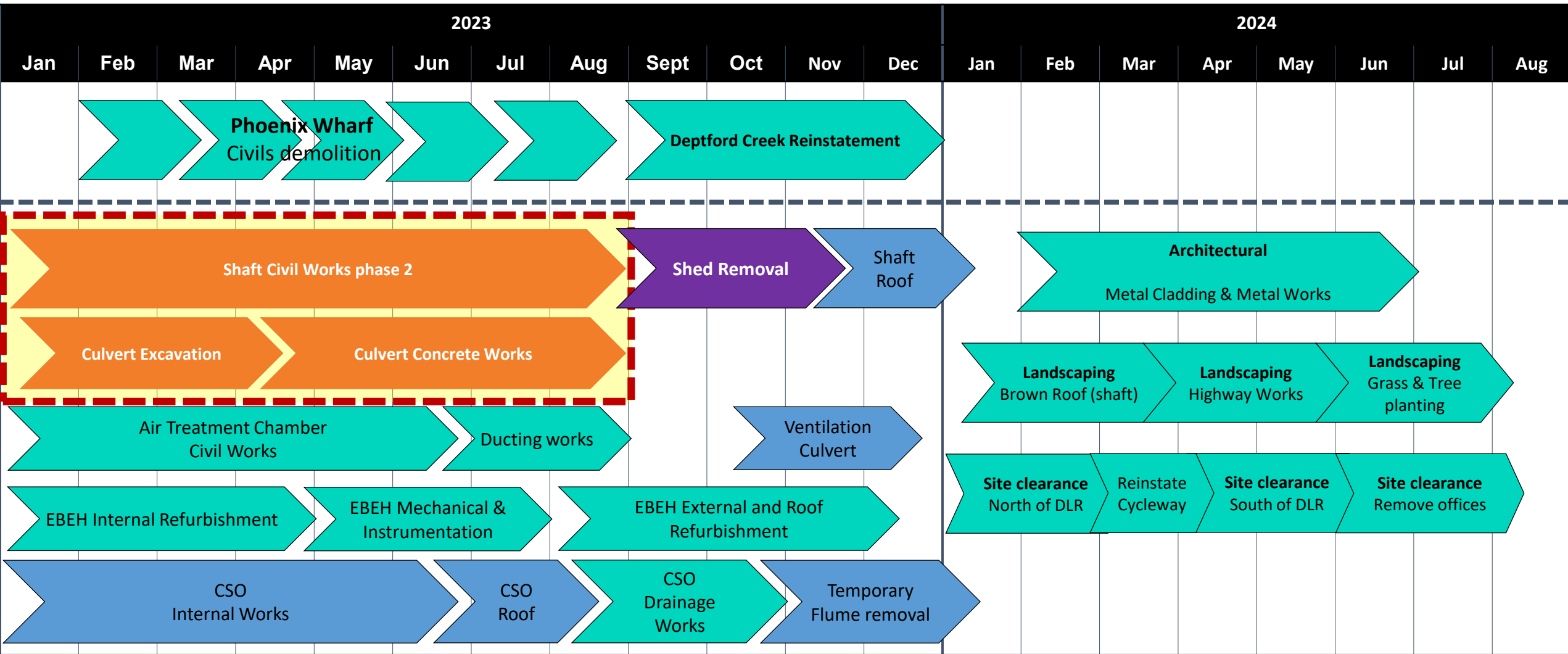




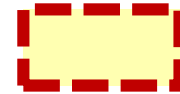


Enclosure dismantling ongoing



Last elements of Slurry Treatment Plant being removed

GREENWICH LOOK AHEAD



| | | |
|---|---|--|
|  Standard Working Hours (Mon-Fri: 8am-6pm / Sat: 8am-1pm) |  Continuous Working Hours 24/5 No works on Saturday nights & Sundays |  Activities under acoustic enclosure |
|  Extended Working Hours (Mon-Fri: 8am-8pm / Sat: 8am-5pm) |  Possible Engineering Hours required by DLR 0:00am to 4:00am | |

SHAFT (UNDER ENCLOSURE)



Secondary lining set up under acoustic enclosure at Greenwich

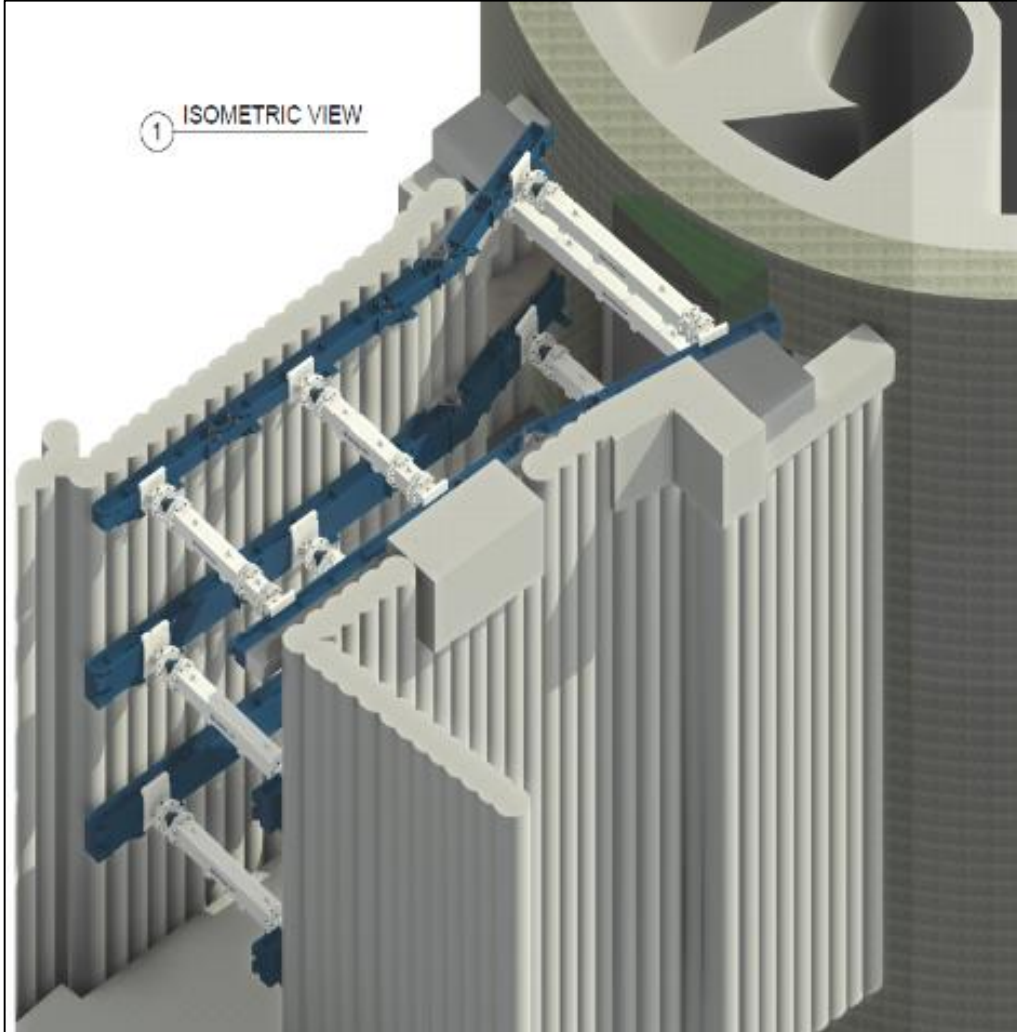
Upcoming works (next 3 months)

- Completion of shaft secondary lining
- Construction of shaft internal walls
- Construction of shaft suspended walkways

Continuous hours (under enclosure)

- 24/5
- No work on Saturday nights & Sundays

CULVERT (UNDER ENCLOSURE)



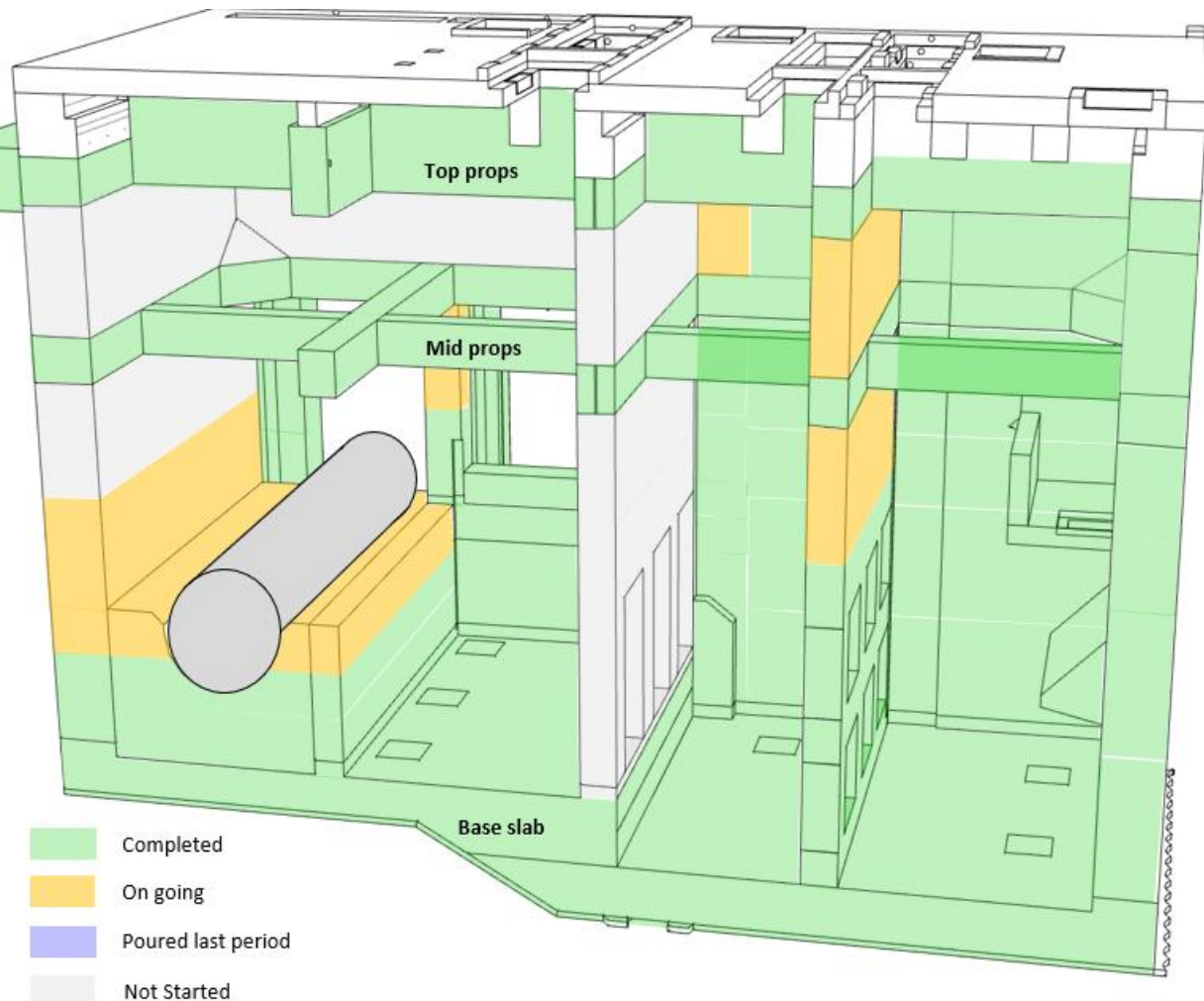
Upcoming works (next 3 months)

- Continue excavation and installation of temporary propping and opening of diaphragm walls
- Construction of base slab

Continuous hours (under enclosure)

- 24/5
- No work on Saturday nights & Sundays

COMBINED SEWER OVERFLOW



Upcoming works (next 3 months)

- Construction of lining walls (ongoing)
- Construction of two internal walls (ongoing)
- Start installation of cast iron penstock gates

Extended working hours

- *Monday to Friday: 8:00 to 20:00*
- *Saturday: 8:00 to 17:00*

EAST BEAM ENGINE HOUSE



Upcoming works (next 3 months)

- Repairs of cast iron frame with defect (off site works)
- Internal brickwork repairs
- Re-installation of 22 windows
- Start of installation of mechanical and instrumentation equipment

Standard working hours

- *Monday to Friday: 8:00 to 18:00*
- *Saturday: 8:00 to 13:00*

AIR TREATMENT CHAMBER



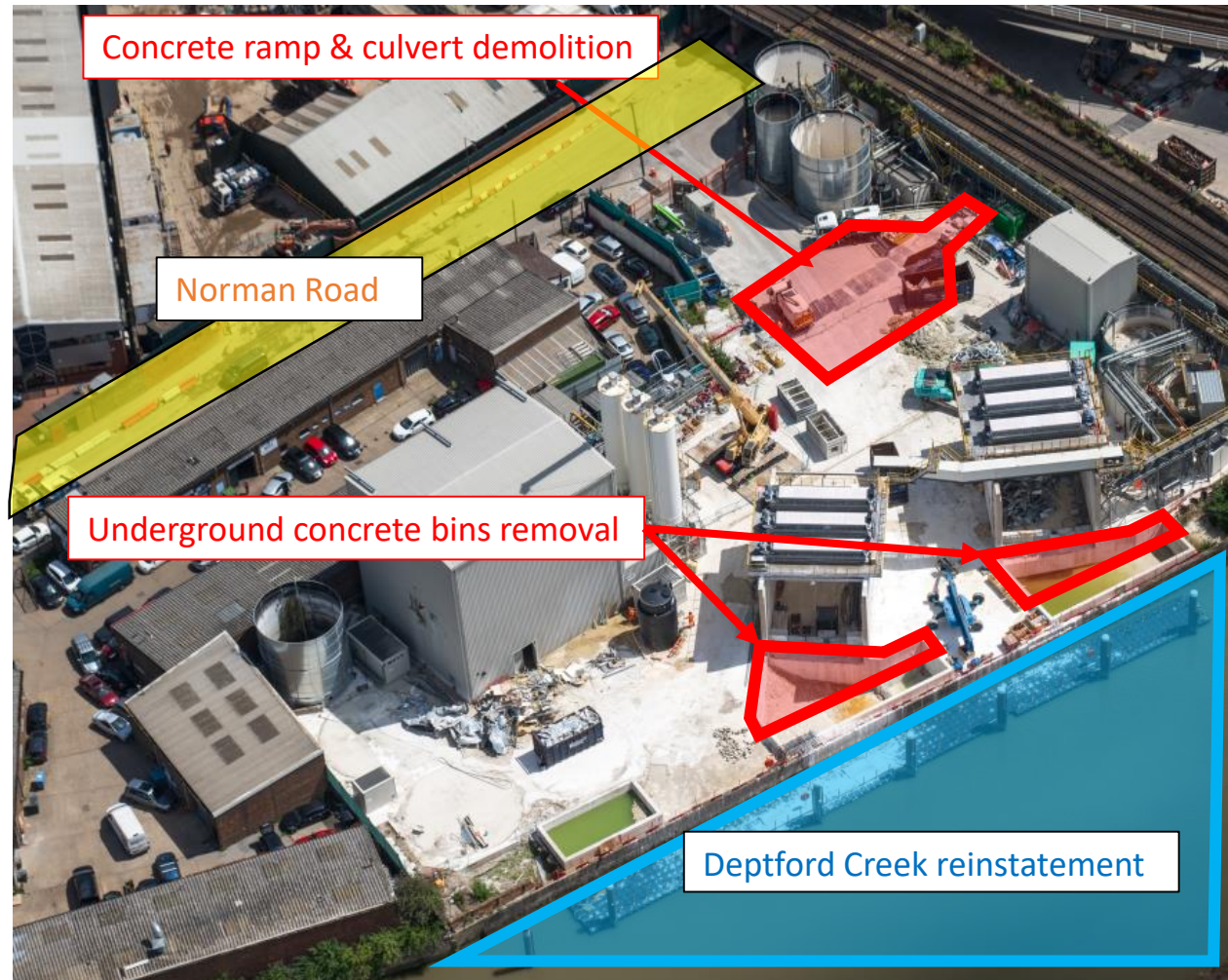
Upcoming works (next 3 months)

- Construction of concrete walls & roof
- Backfilling and sheet piles removal

Standard working hours

- *Monday to Friday: 8:00 to 18:00*
- *Saturday: 8:00 to 13:00*

PHOENIX WHARF STRIP OUT



Upcoming works (next 3 months)

- Concrete ramp & culvert demolition
- Underground concrete bins partial removal

Standard working hours

- *Monday to Friday: 8:00 to 18:00*
- *Saturday: 8:00 to 13:00*

MAIN SITE REINSTATEMENT



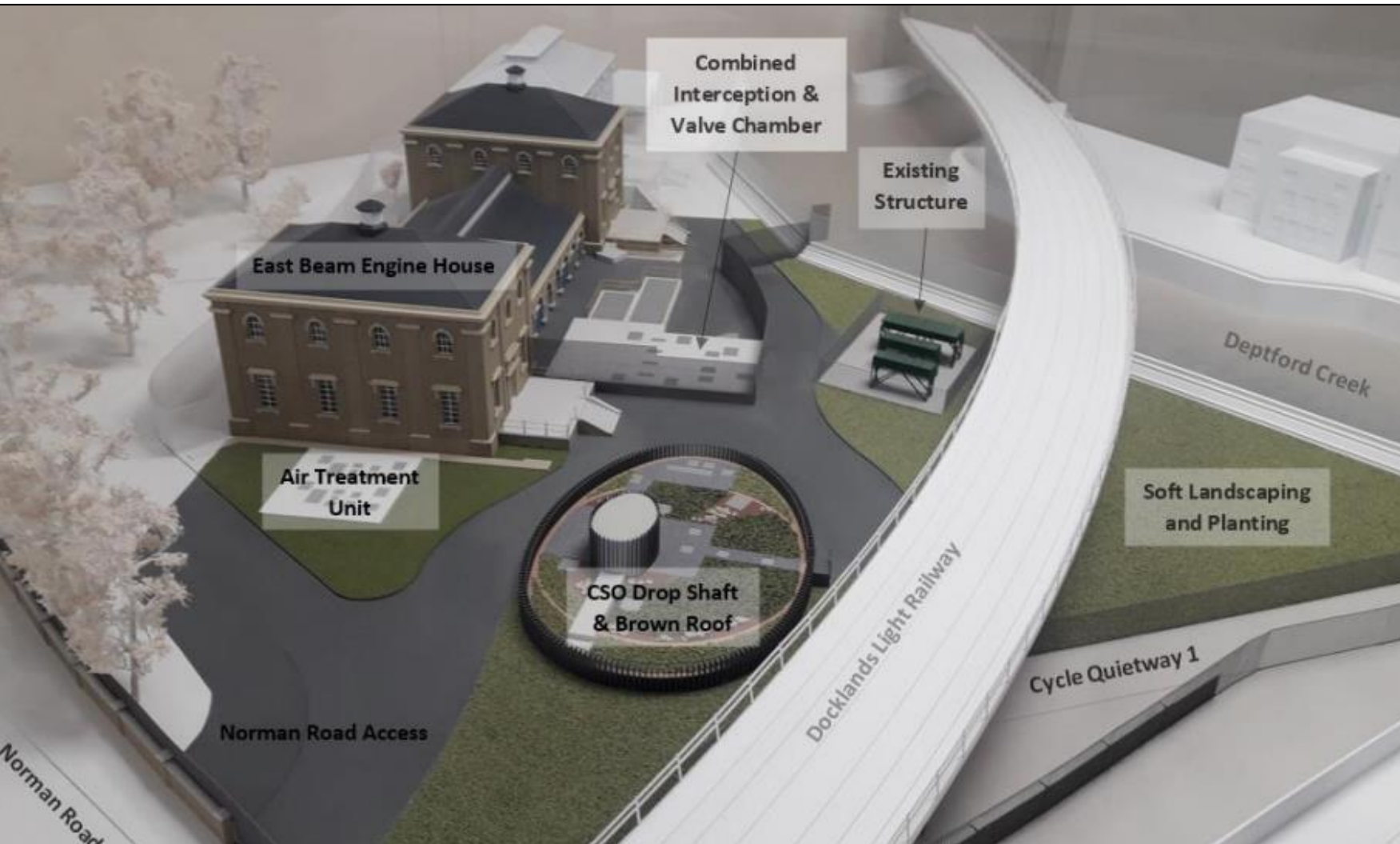
Picture of acoustic enclosure during installation phase, in January 2019

Other planned works (late 2023)

- Main acoustic enclosure removal (*)
- Demolition of all temporary concrete platforms and temporary concrete foundations
- Demolition of existing cycle path / footpath (after construction of permanent footpath)
- Offices & site hoarding removal

(*) Removal of main shed will require to work under engineering hours (0:00am to 4:00am) due to proximity to the DLR viaduct

LANDSCAPING, REINSTATEMENT



Planned works (early 2024)

- Cycleway / footpath reinstatement
- Brown roof over shaft
- Soft landscaping and planting
- Road surfacing
- Site reinstatement and demobilisation

Standard working hours

- *Monday to Friday: 8:00 to 18:00*
- *Saturday: 8:00 to 13:00*

NOISE AND AIR QUALITY REPORT GREENWICH



| | Noise | Air Quality |
|--------|-----------------|---------------------|
| Month | S61 Exceedances | 24h PM10 exceedance |
| Aug-22 | 0 | 0 |
| Sep-22 | 0 | 0 |
| Oct-22 | 0 | 0 |
| Nov-22 | 4 | 0 |
| Dec-22 | 0 | 0 |
| Jan-22 | 0 | 0 |

Noise Monitoring

- 4 Section 61 noise exceedances – reported to Council.

Air Quality Monitoring

- No air quality exceedances (24h PM10)

- Section 61 Phase 5 covers up to end of March 2023.
- Section 61 Phase 6 will come into effect April 2023.
- Works have and will be happening inside the acoustic enclosure for the next couple of months.
- Majority of works that occur outside of standard working hours are inside the acoustic enclosure
- Works occurring outside of standard working hours, outside the acoustic enclosure are required to meet restrictions from the tidal properties of Deptford Creek

DEPTFORD CHURCH STREET

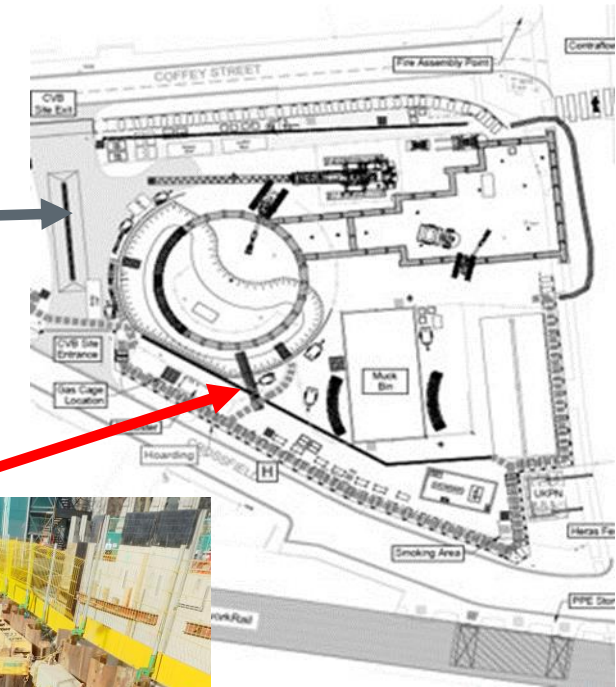


DEPTFORD WORKS UPDATE

AIR TREATMENT CHAMBER, VENTILATION CHAMBER

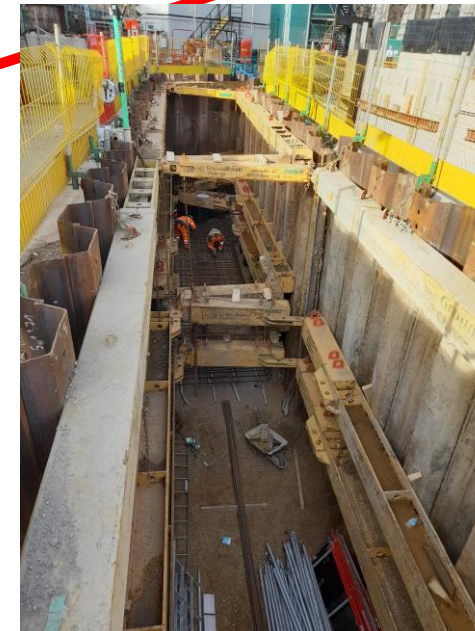
Air Treatment Chamber (Phase 1)

- Roof, internal screeding & sheet piles removal complete
- Connection to shaft on-going
- NEXT: installation of filters, draining connection to the shaft



Ventilation Chamber (phase 2)

- Sheet piling complete
- Excavation ongoing
- Base slab construction ongoing
- NEXT: complete structure up to roof, backfill and remove sheet piles

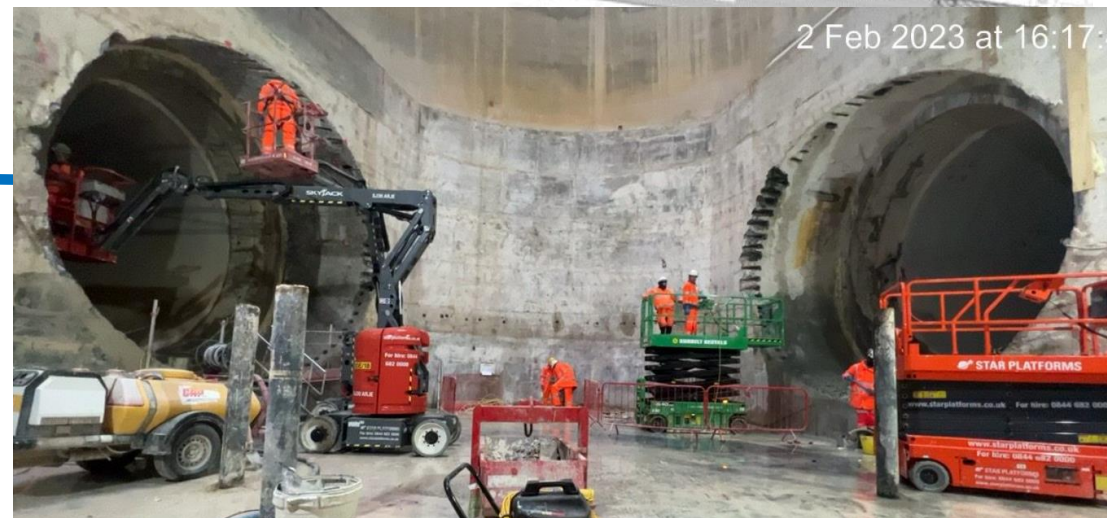
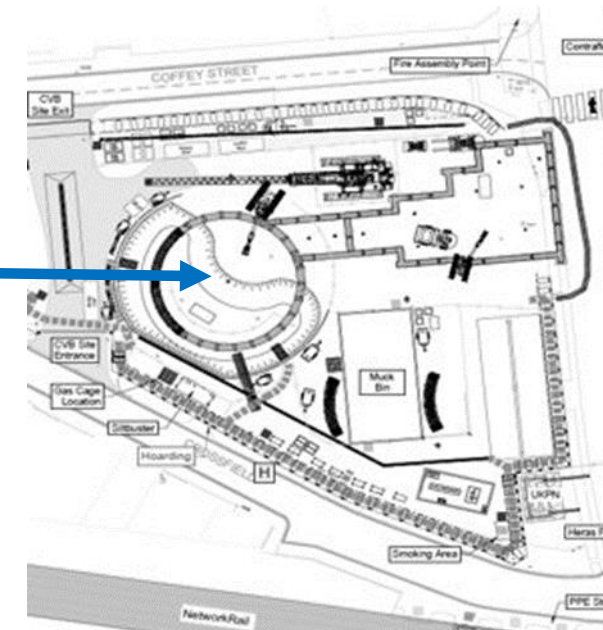


DEPTFORD WORKS UPDATE

SHAFT

Shaft

- Tunnel concrete secondary lining from Deptford Church Street complete
- Removal of temporary backfill complete
- Construction of collar beams on-going
- NEXT: collar beams, mass fill concrete, walls construction

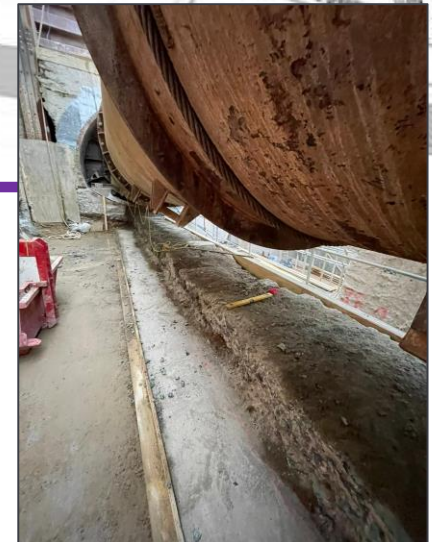
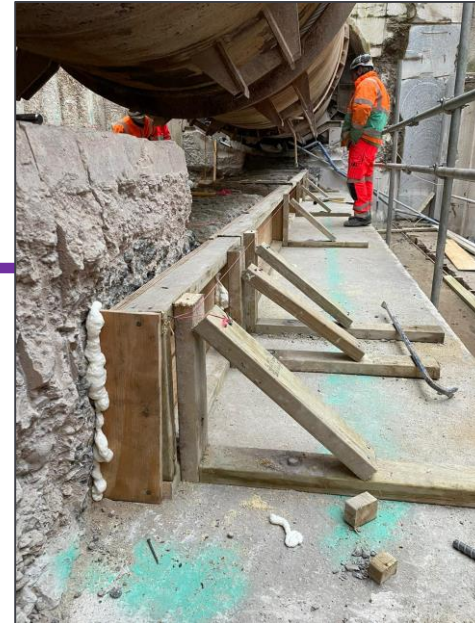
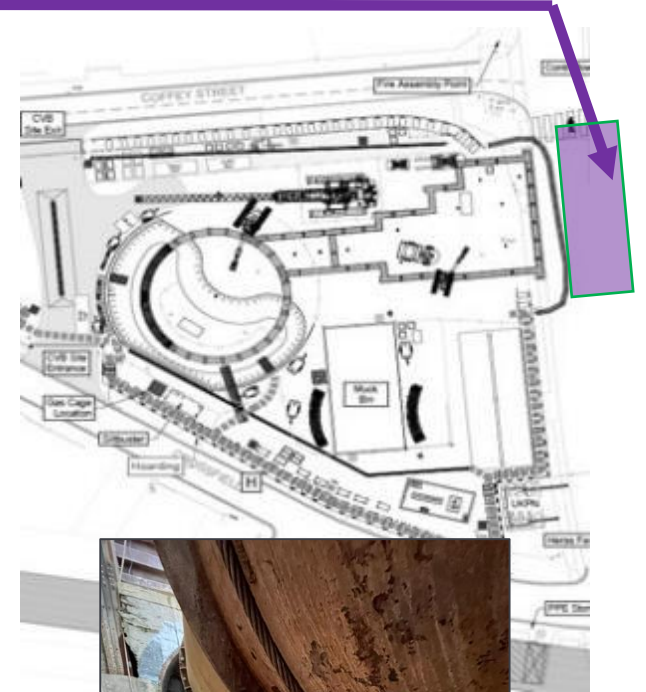


DEPTFORD WORKS UPDATE

Combined Sewer Overflow (CSO)

Combined Sewer Overflow Phase 2: Sewer connection

- Storm sewer demolition complete
- Base slab construction on-going
- Installation of new Bronze Street sewer on-going
- NEXT: walls, cascade slab, roof construction.



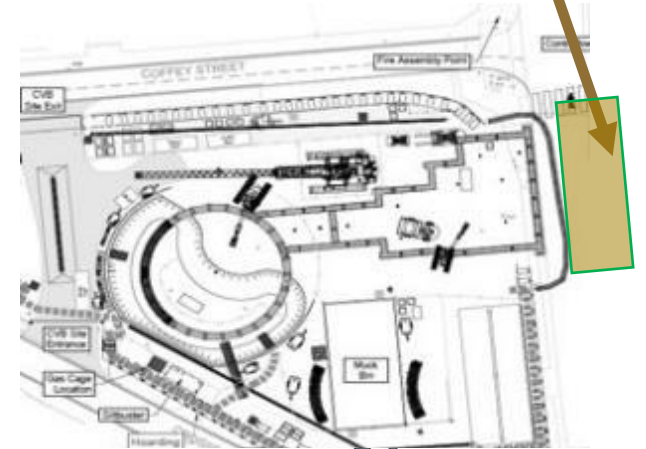
DEPTFORD WORKS UPDATE

Electrical kiosk / surface works



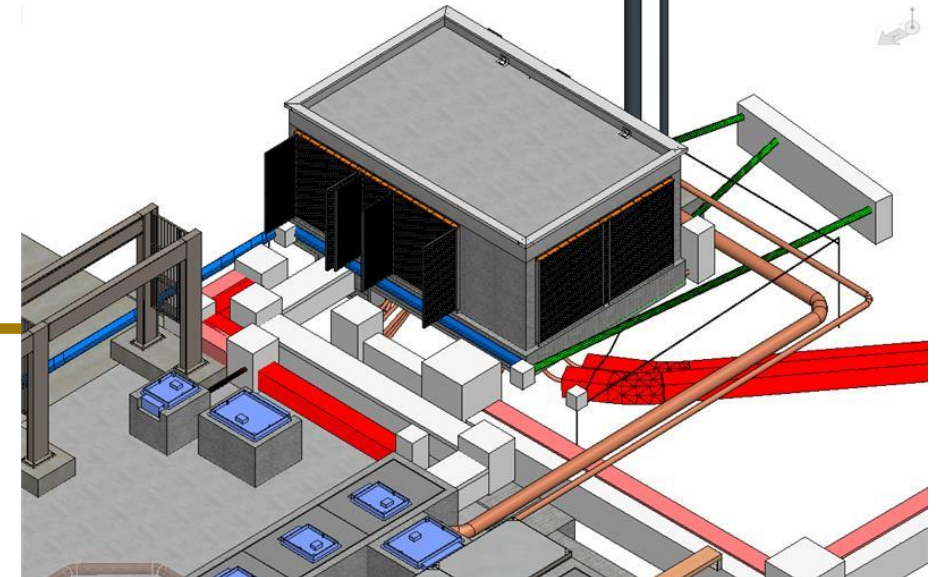
Electrical kiosk:

- Enabling works & excavation complete
- Ducts installation under slab on-going
- NEXT: base slab, walls, roof construction



Surface works:

- NEXT: ducting & drainage installation
- Ventilation column base construction
- Soakaway construction



DEPTFORD 12 MONTHS LOOK AHEAD



| | 2022 | | | 2023 | | | | | | | | | | | | 2024 | | | | | | | | | | | | | | | | | | | | | | | | | |
|--|------|----|----|------|---|---|---|---|---|---|---|---|----|----|----|------|---|---|---|---|---|---|---|---|----|----|----|---|--|--|--|--|--|--|--|--|--|--|--|--|--|
| | 10 | 11 | 12 | 1 | 2 | 3 | 4 | 5 | 6 | 7 | 8 | 9 | 10 | 11 | 12 | 1 | 2 | 3 | 4 | 5 | 6 | 7 | 8 | 9 | 10 | 11 | 12 | | | | | | | | | | | | | | |
| Shaft/culvert civils + MEICA | | | █ | █ | | | | | | | | | | | | | | | | | | | | | | | | | | | | | | | | | | | | | |
| Tunnel activities from DEPCS | █ | █ | | | | | | | | | | | | | | | | | | | | | | | | | | | | | | | | | | | | | | | |
| Air Treatment chamber, including mechanical installation | █ | | | █ | | | | | | | | | | | | | | | | | | | | | | | | | | | | | | | | | | | | | |
| CSO civils works | █ | | | █ | | | | | | | | | | | | | | | | | | | | | | | | | | | | | | | | | | | | | |
| MEICA works, testing and commissioning | | | | | | | | | | | | | | | | | | | | | | | | | █ | | | █ | | | | | | | | | | | | | |
| Surface works, Landscaping and site reinstatement | █ | | █ | | | | | | | | | | | | | | | | | | | | | | | | | | | | | | | | | | | | | | |



MEICA* - Mechanical, Electrical, Instrumentation, Control & Automation features

ARCHITECTURE & LANDSCAPE



- The Deptford Church Street architecture and landscape design received approval from the Council on the 25 November 2022 (Ref: DC/22/128518).
- The Council is seeking to keep the one-way system on Crossfield and Coffey Streets via a Traffic Management Order - this is currently being advertised on the London Borough of Lewisham's website.



NOISE AND AIR QUALITY REPORT DEPTFORD



| Month | Noise | Air Quality |
|--------|-----------------|---------------------|
| | S61 Exceedances | 24h PM10 exceedance |
| Aug-22 | 0 | 0 |
| Sep-22 | 0 | 0 |
| Oct-22 | 0 | 0 |
| Nov-22 | 1 | 0 |
| Dec-22 | 0 | 0 |
| Jan-22 | 0 | 0 |

Section 61 Phase 5 since March, and covers works up until April 2022.

S61 Phase 6 to cover April 2022 until April 2023

Noise Monitoring

- 1 Section 61 noise exceedances – reported to Council

Air Quality Monitoring

- No air quality exceedances (24h PM10)

DEPTFORD CHURCH STREET ON FILM



LONDON'S SUPER SEWER - December 2022 update



ALEXANE BERTRAND
Section Engineer

Our December 2022 update video featured the team at our Deptford site.

Click below to watch

<https://www.youtube.com/watch?v=7Zv1CZfTwiM>

Watch all our update videos on our dedicated YouTube channel - [Tideway London – YouTube](#)

LEGACY: VOLUNTEERING



Staff across the Tideway East sites dropped gifts in donation boxes in the run up to Christmas.

The presents were delivered to “The Times & Talents charity” by Santa Paul & Santa Keith and “The Glyn Hopkin Hub” by Santa Martin & Santa Kendal on behalf of CVB



LEGACY: STEM & ENVIRONMENT



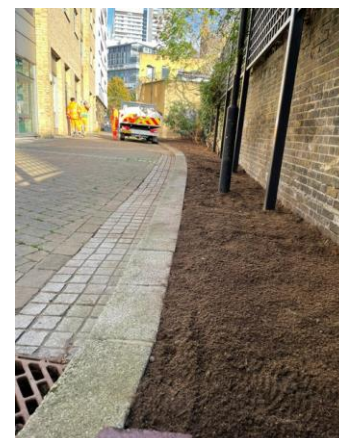
Career Ready 7th December



Volunteering

- Site team volunteered pulling out mature shrub roots and in a community garden in November.
- The garden representative said 'I couldn't have been more pleased'.

- Tideway CVB hosted 'A Capital Experience' for charity Career Ready UK.
- More than 40 students from secondary schools in our site boroughs learnt about the super sewer project and their importance as stakeholders.
- There was a Q&A and presentations from Community Engagement, Safety Health and Environment (SHE) and Graduate engineers.



MITIGATION

If you feel our work is affecting you



Who do I go to for advice?

- For personal assistance contact our Helpdesk: 08000 30 80 80 or helpdesk@tideway.london
- For independent advice contact Independent Advisory Service (IAS) Helpline: 0800 917 8845 or info@tidewayias.co.uk

Independent Compensation Panel

You can download an application form from the Tideway website:

www.tideway.london/help-advice/compensation-information/Independent-Compensation-Panel

The Helpdesk can submit your application to the Independent Compensation Panel (ICP) on your behalf, or you can submit your form directly to the ICP: admin@tidewayicp.london

CONTACT US



If you have any questions or enquiries, please contact the Tideway Helpdesk:

Telephone: 0800 030 80 80

Email: Helpdesk@Tideway.London

Questions?



Tideway





Tideway

RECONNECTING LONDON WITH THE RIVER THAMES

#SuperSewer

www.tideway.london