

CARNWATH ROAD RIVERSIDE

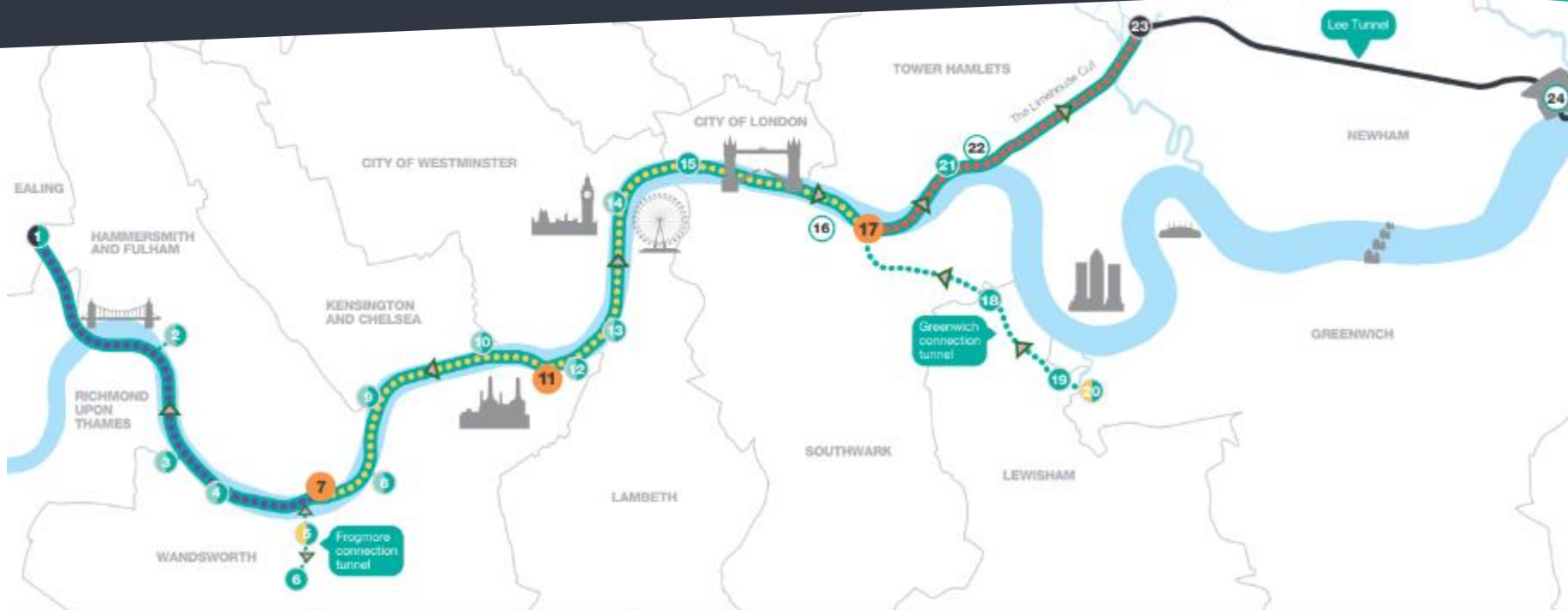
Drop-in session - Wednesday 3 May



Tideway



PROJECT OVERVIEW



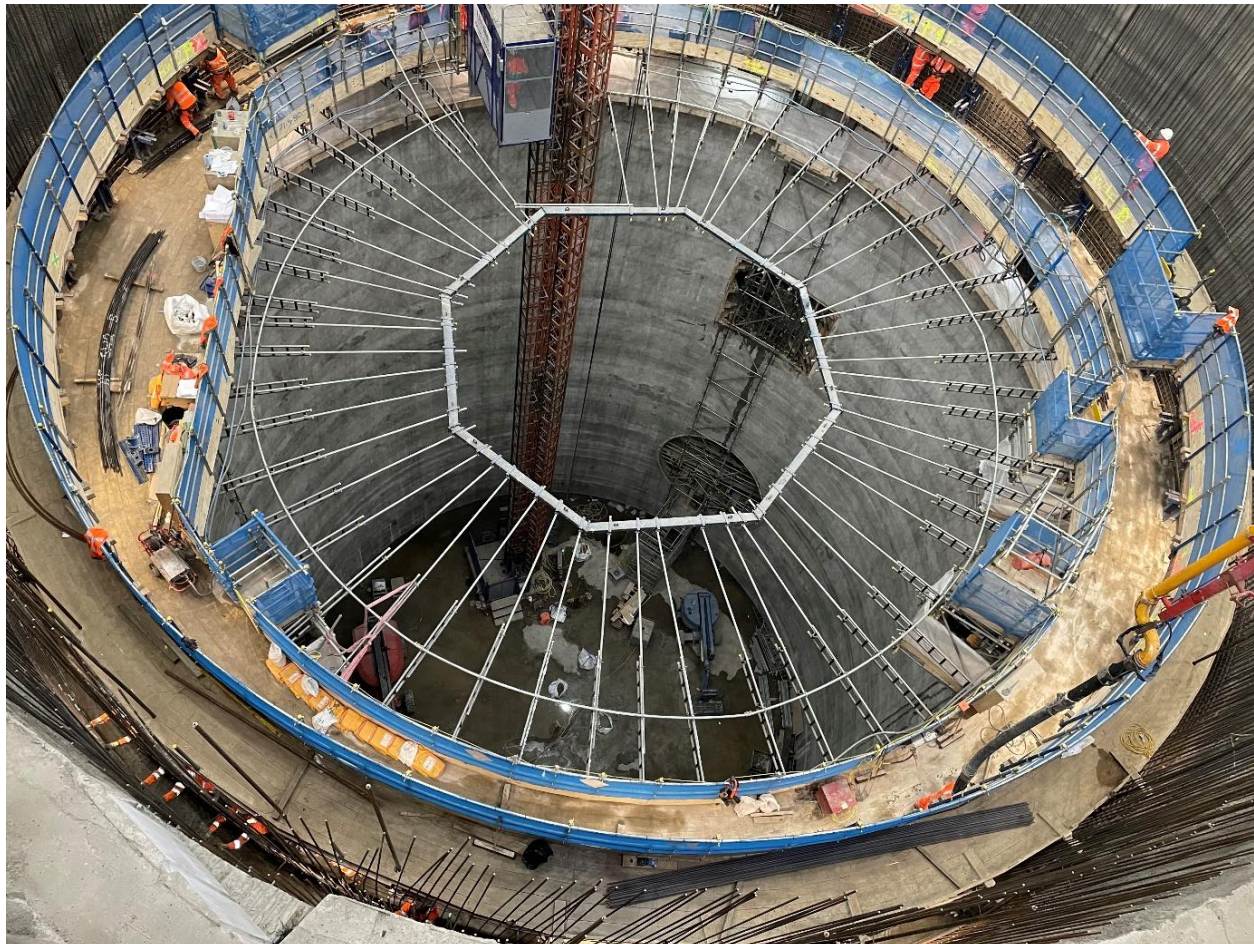
<p>Tideway BMB WEST</p> <ul style="list-style-type: none"> 1 Acton Storm Tanks 2 Hammersmith Pumping Station 3 Barn Elms 4 Putney Embankment Foreshore 5 Dormay Street 6 King George's Park 7 Carnwath Road Riverside 	<p>Tideway FLO CENTRAL</p> <ul style="list-style-type: none"> 8 Falconbrook Pumping Station 9 Cremorne Wharf Depot 10 Chelsea Embankment Foreshore 11 Kirtling Street 12 Heathwall Pumping Station 13 Albert Embankment Foreshore 14 Victoria Embankment Foreshore 15 Blackfriars Bridge Foreshore 	<p>Tideway CVB EAST</p> <ul style="list-style-type: none"> 16 Shad Thames Pumping Station 17 Chambers Wharf 18 Earl Pumping Station 19 Deptford Church Street 20 Greenwich Pumping Station 21 King Edward Memorial Park Foreshore 23 Abbey Mills Pumping Station 	<p>Tideway Thames Water</p> <ul style="list-style-type: none"> 22 Bekesbourne Street 24 Beckton Sewage Treatment Works <p>MAP KEY</p> <ul style="list-style-type: none"> ● Main tunnel drive tunnel site ● Main tunnel reception site ● CSO site ● Short connection tunnel drive site ● Long connection tunnel drive site ○ System modifications ■ Main tunnel ⋯ Connection Tunnels — Lee Tunnel ◀▶ Proposed drive direction ● West works site ● Central works sites ● East works site
---	---	--	---

WORKS UPDATE

Scott Hughes, Section Manager

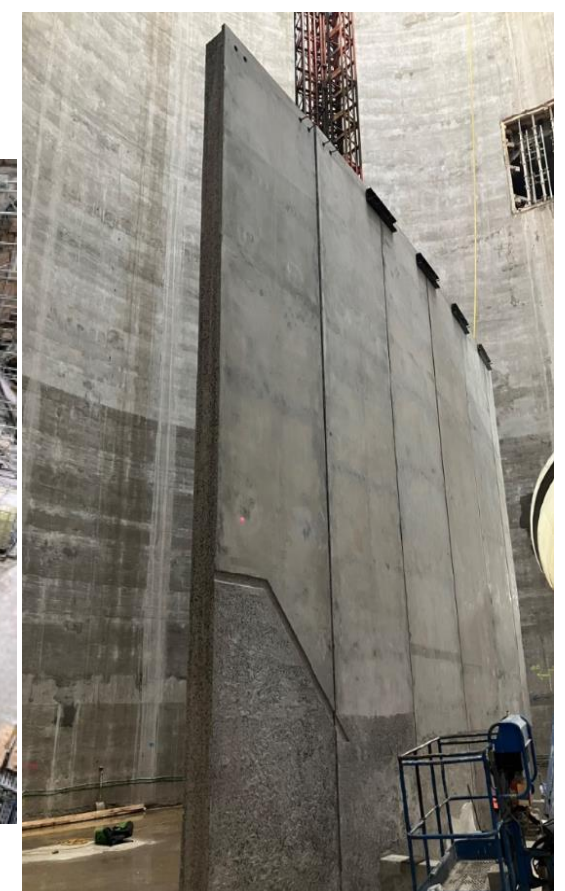
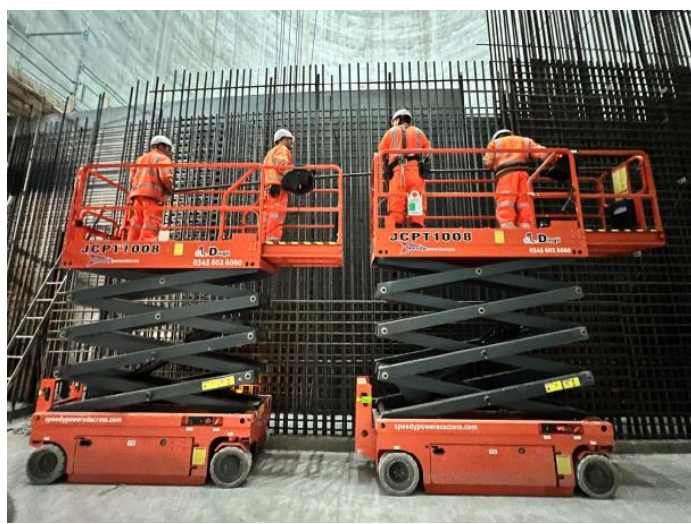
Shaft Slipform Secondary Lining

- Team added a secondary lining of concrete onto the inside of the shaft
- 41m in height of continuously cast concrete
- Approx. 2500m³ of concrete
- Duration - 27 days to complete

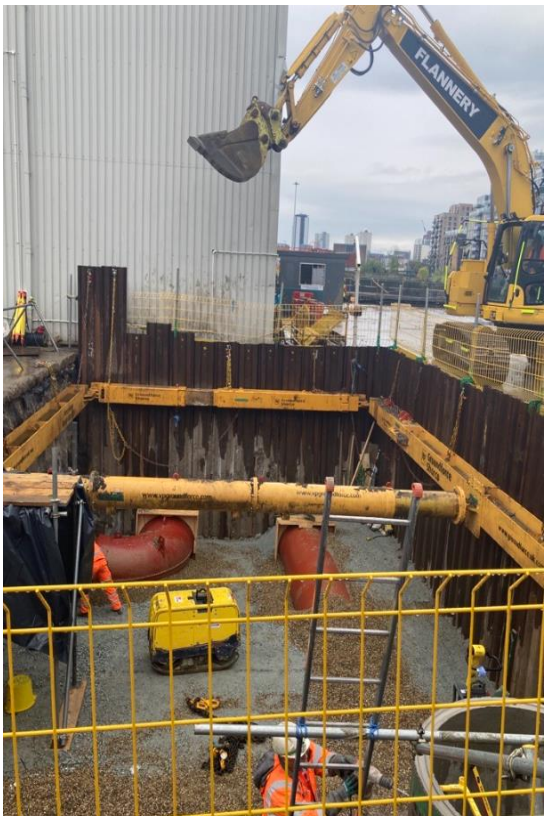


Mass Benching & Weir Wall

- Structures funnel the flows through the base of the shaft
- 9m high precast walls with 9m high triangular precast blocks above
- 3000m³ of concrete poured
- Weir wall is 9m high cast in situ



Vortex Install & Surface Operations



- Vent ducting excavation and installation of the two pipe runs complete
- Currently backfilling to surface level

- Stainless steel vortex delivered to site and installed on the support table
- The vortex will help slow the flows into the sewer
- Next stage is to cast two concrete surrounds to the length
- Followed by install of the generator on top of the tube

Working hours*

- Monday to Friday: 8am to 6pm
- Monday to Friday: extended hours until 10pm (no noisy working)
- Saturday: 8am to 1pm

There is a 1-hour mobilisation period before and after these times.

Additionally, we have maintenance periods on the weekend:

- Saturday: 1pm to 5pm
- Sunday: 10am to 4pm

The removal of the acoustic enclosure will take place within the hours:

- Monday to Friday: 8am - 6pm

We will limit timings of concrete breaking to:

Monday to Friday

- 9am to 11am
- 1pm to 3pm
- 4pm to 6pm

Saturday

- 9am to 11am

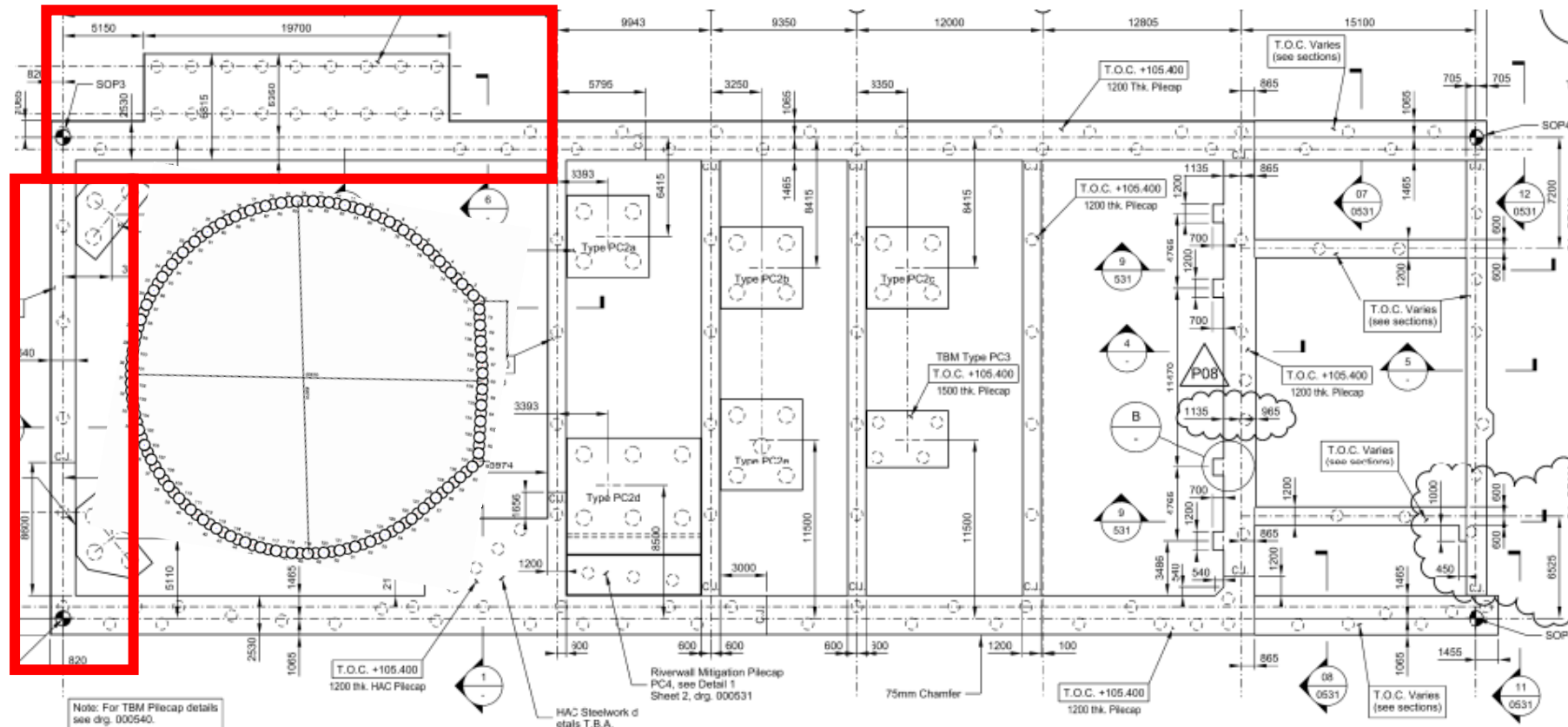
Acoustic Shed Demolition

- Demolition of the shed scheduled to start on 15 May and will take approx. 4 weeks
- Working from west to east for removal with debris materials being recycled where possible
- Gantry crane removal has commenced and the strip out of the internal shed is ongoing
- Working hours will be normal site hours 8am to 6pm with 1hr grace period either side, Mon to Fri



Pile Cap, Piles & Hardstanding Breakout

- Once the acoustic shed has been removed we need to breakout existing pile caps, piles and hardstanding to allow the construction of the Air Treatment Chamber (ATC).
- This will require a large amount of concrete breakout and to mitigate against noise and vibration we will be wire saw cutting and coring as much of the slabs as possible. Noise barriers will be placed around the work area for further mitigation.
- These breaking works will last for approx. 6 to 7 weeks.



Our allowed breaking hours are:

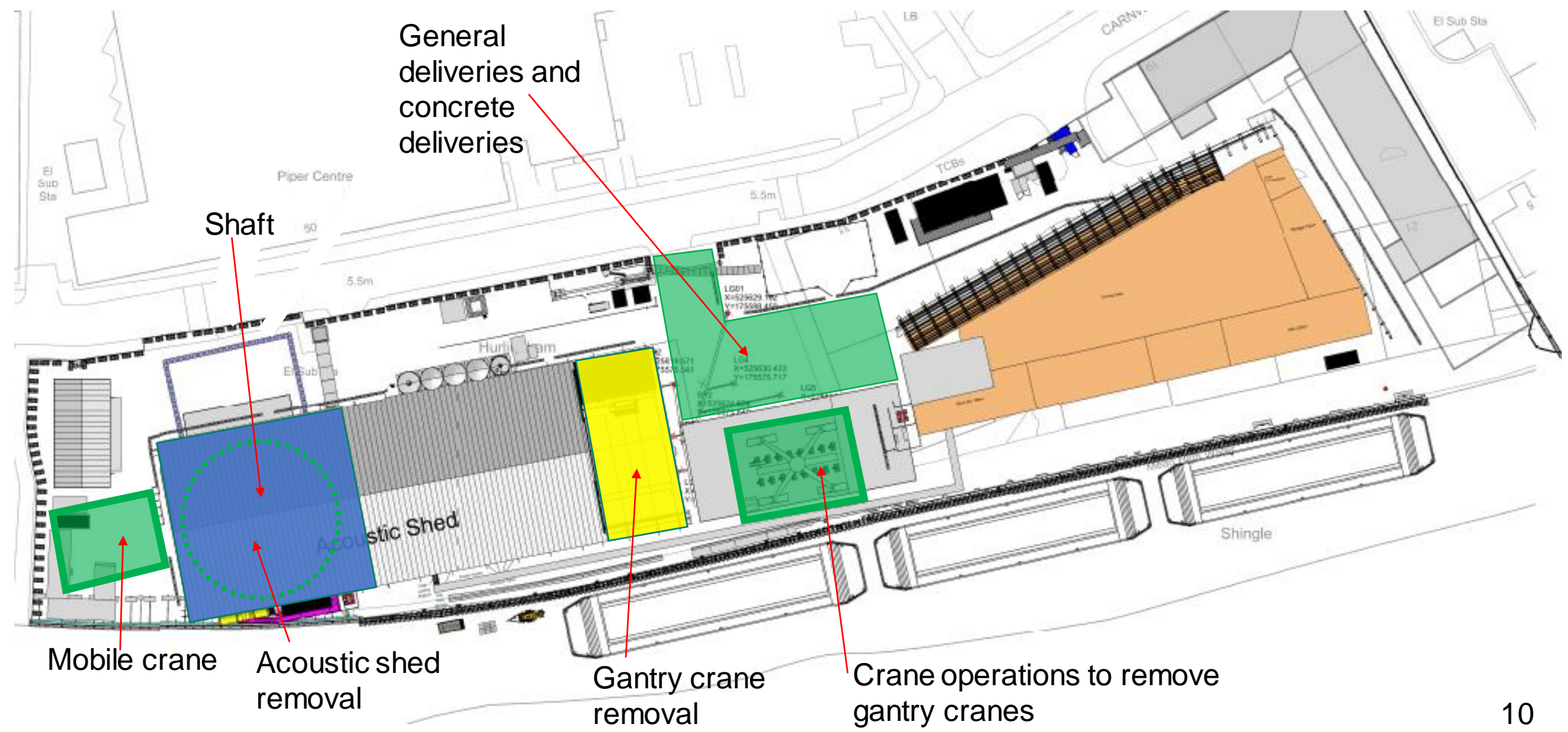
Monday to Friday

- 9am to 11am
- 1pm to 3pm
- 4pm to 6pm

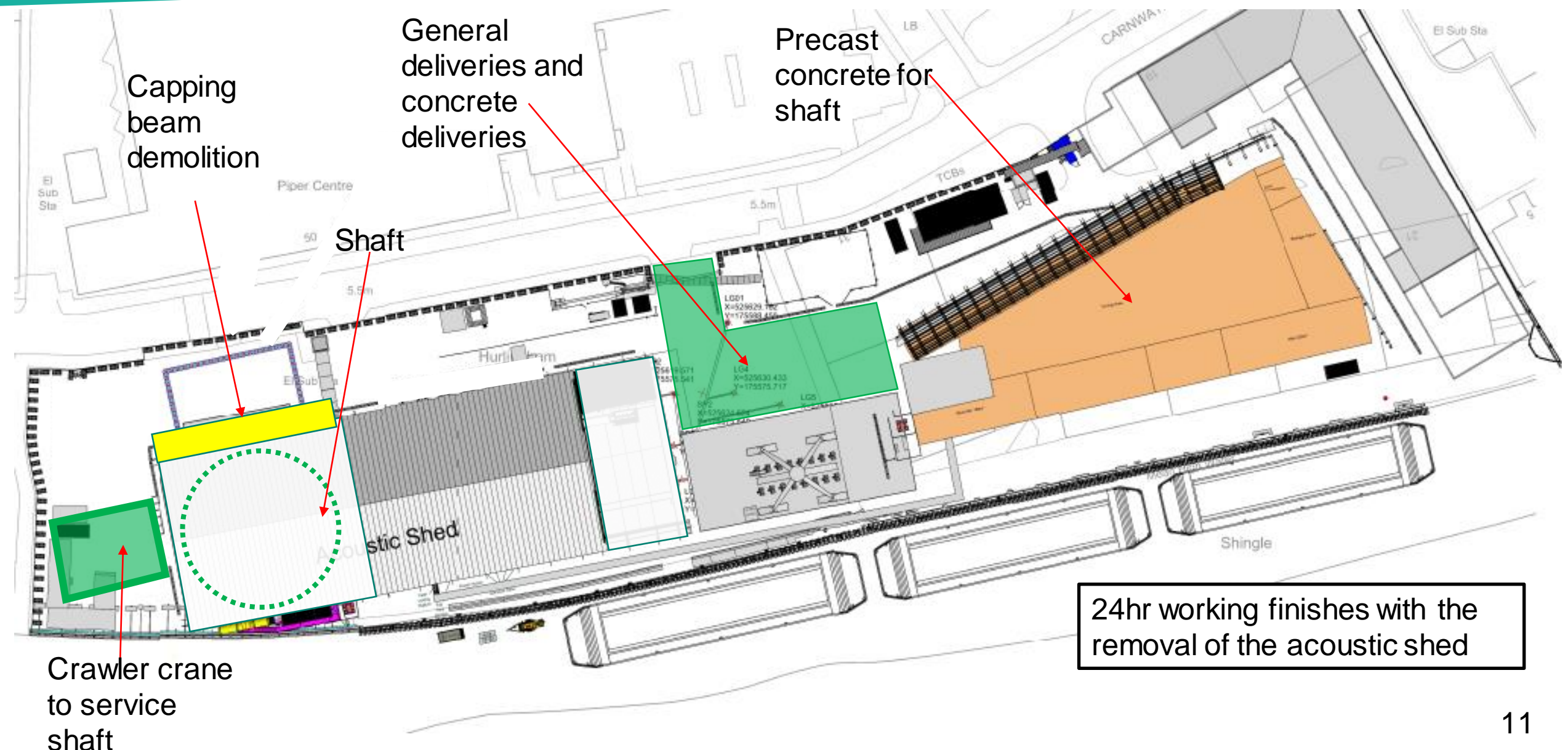
Saturday

- 9am to 11am

May - June Site Layout



June – October Site Layout



24hr working finishes with the removal of the acoustic shed

Current programme

Key dates

- End of 24 hour working – 13 May 2023
- Shaft works – May 2023 to September 2023
- Removal of acoustic shed – May 2023 to June 2023
- Surface civil works – June 2023 to January 2024
- Landscaping works – January 2024 to April 2024
- Site demobilisation – January 2024 to August 2024
- BMB vacate site – Autumn 2024
- System testing and commissioning continues until 2024, though minimal on-site activity
- 2025 super sewer operational



Latest progress across the project

- Project approaching 90% complete
- Primary tunnelling is now complete
- All shafts have been fully excavated and secondary lined in concrete.
- Tunnel secondary lining due to complete in 2023
- System commissioning to start winter 2023/24
- Project on track to be operational in 2025
- Fully funded for construction phase



How To Make A Claim if Affected By Tideway's Work

Who do I go to for advice?

- For personal assistance contact our Helpdesk: 08000 30 80 80 or helpdesk@tideway.london
- For independent advice contact Independent Advisory Service (IAS) Helpline: 0800 917 8845 or info@tidewayias.co.uk

Independent Compensation Panel

You can download an application form from the Tideway website:

www.tideway.london/help-advice/compensation-information/Independent-Compensation-Panel

The Helpdesk can submit your application to the Independent Compensation Panel (ICP) on your behalf or you can submit your form directly to the ICP: admin@tidewayicp.london



Tideway

RECONNECTING LONDON WITH THE RIVER THAMES

#SuperSewer

www.tideway.london