

GREENWICH PUMPING STATION AND DEPTFORD CHURCH STREET COMMUNITY LIAISON WORKING GROUP



Tideway



6 November 2023

Content

Topic	
Welcome, introductions and apologies	Emily Black
Notes and actions from last meeting	Emily Black
Updates from Deptford Church Street project team <ul style="list-style-type: none">• Construction update and upcoming activities• Noise and air quality	Lucas Truflandier Almas Birdi
Updates from Greenwich Pumping Station project team <ul style="list-style-type: none">• Construction update and upcoming activities programme• Noise and air quality	Audric Rivaud Almas Birdi
Mitigation	Emily Black
Legacy and community investment	
Feedback and discussion	All
Any other business	All
End	

Outstanding Actions

Meeting Date	Action	Responsibility	Status
7 Feb 2023	New Action 1 – Team to keep resident updated in terms of progress of the cycleway reinstatement.	CVB	Open
7 Feb 2023	New Action 2 – Tideway to share recent correspondence on the proposed CreekLink heritage trail from MD to CVB's MG. This signage trail is not being delivered by Tideway.	Tideway	Closed. Correspondence has been shared with MG

PROJECT OVERVIEW



<p>BMB WEST</p>	<p>FLO CENTRAL</p>	<p>CVB EAST</p>	<p>16 Shad Thames Pumping Station 22 Bekesbourne Street 24 Beckton Sewage Treatment Works</p>
<ul style="list-style-type: none"> 1 Acton Storm Tanks 2 Hammersmith Pumping Station 3 Barn Elms 4 Putney Embankment Foreshore 5 Dornay Street 6 King George's Park 7 Carnwath Road Riverside 	<ul style="list-style-type: none"> 8 Falconbrook Pumping Station 9 Cremorne Wharf Depot 10 Chelsea Embankment Foreshore 11 Kirtling Street 12 Heathwall Pumping Station 13 Albert Embankment Foreshore 14 Victoria Embankment Foreshore 15 Blackfriars Bridge Foreshore 	<ul style="list-style-type: none"> 17 Chambers Wharf 18 Earl Pumping Station 19 Deptford Church Street 20 Greenwich Pumping Station 21 King Edward Memorial Park Foreshore 23 Abbey Mills Pumping Station 	<p>MAP KEY</p> <ul style="list-style-type: none"> <li style="width: 50%;">● Main tunnel drive tunnel site <li style="width: 50%;">■ Main tunnel <li style="width: 50%;">● Main tunnel reception site <li style="width: 50%;">⋯ Connection Tunnels <li style="width: 50%;">● CSO site <li style="width: 50%;">— Lee Tunnel <li style="width: 50%;">● Short connection tunnel drive site <li style="width: 50%;">◄ ► Proposed drive direction <li style="width: 50%;">● Long connection tunnel drive site <li style="width: 50%;">● West works site <li style="width: 50%;">○ System modifications <li style="width: 50%;">● Central works sites <li style="width: 50%;">● East works site

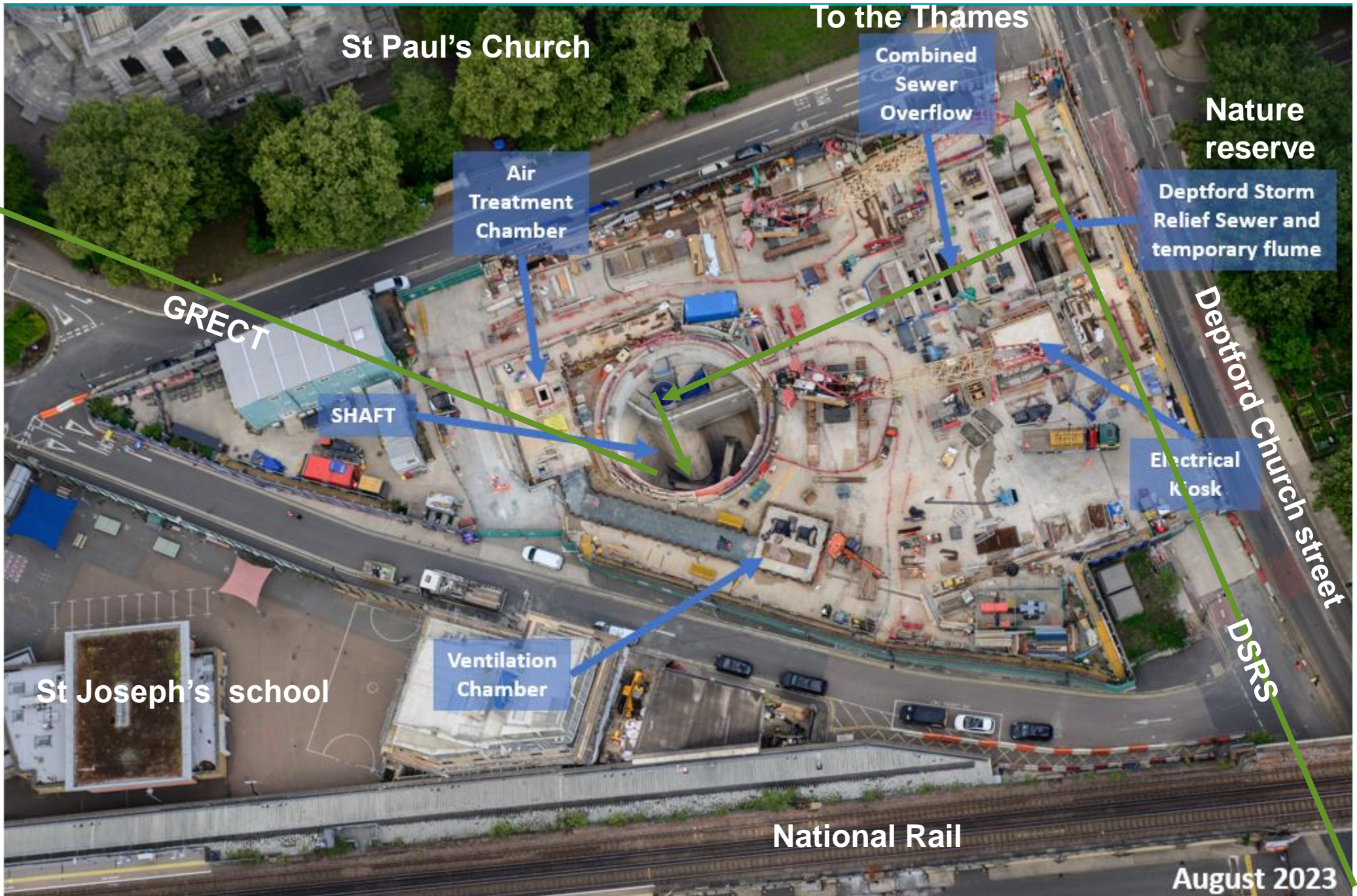
DEPTFORD CHURCH STREET

AUDRIC RIVAUD



Aerial Aug 2023

To main tunnel



St Paul's Church

To the Thames

Combined Sewer Overflow

Nature reserve

Deptford Storm Relief Sewer and temporary flume

Air Treatment Chamber

GRECT

SHAFT

Electrical Kiosk

Deptford Church street

DSRS

St Joseph's school

Ventilation Chamber

National Rail

August 2023

Deptford Church Street works update



Air Treatment Chamber (Phase 1)

- Structure complete
- Installation of filters on-going
- Drainage connection to shaft on-going

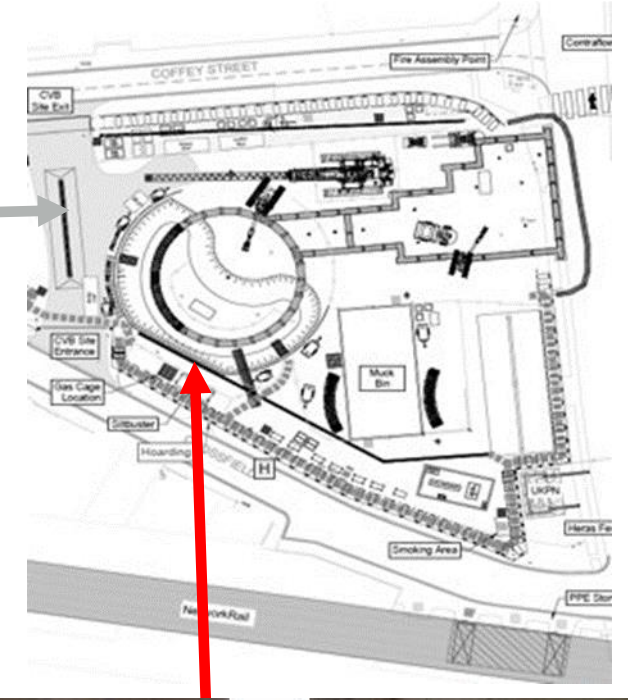
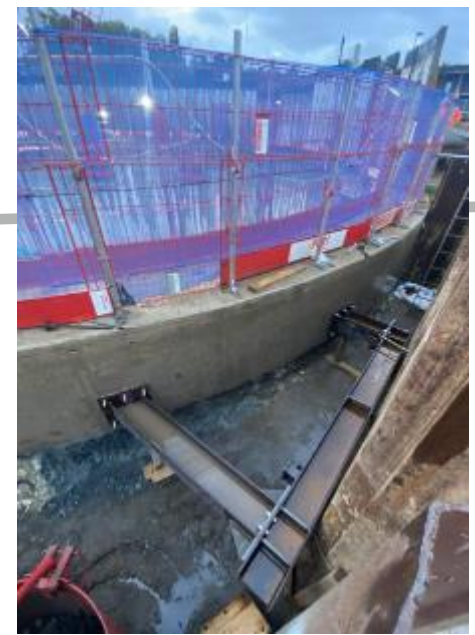
Next: completion of installation of filters, completion of drainage connection to the shaft



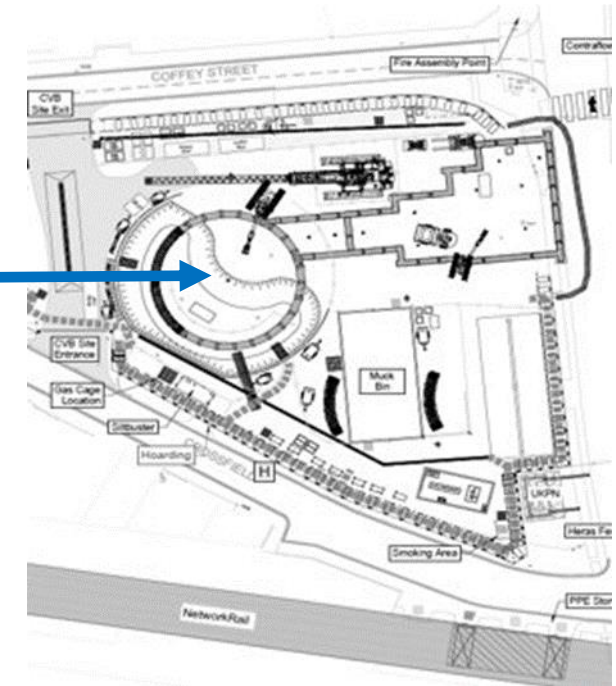
Ventilation Chamber (phase 2)

- Structure complete
- Sheet piles removed

Next: installation of signature ventilation columns



Deptford Church Street works update - Shaft

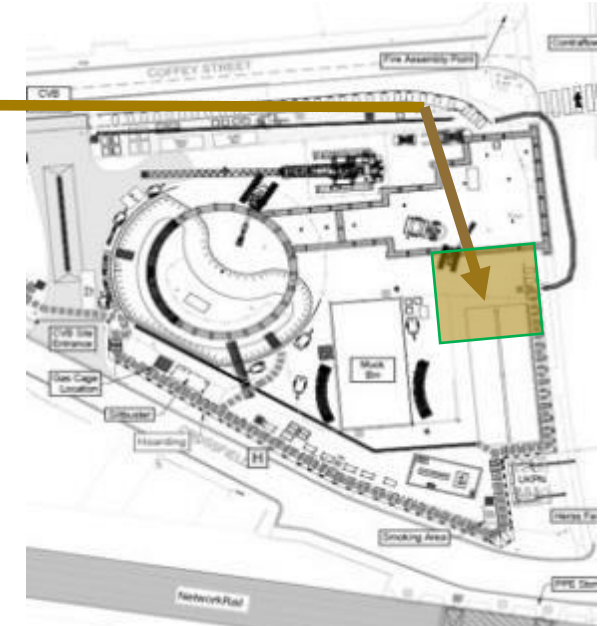


Shaft:

- Main internal structures (collars, slabs and walls) complete
- Vortex walkway and landing complete
- Construction of roof beams on-going
- Roof slab preparation on-going

Next: screeding and benching, roof slab installation (early hours oversized deliveries)

Deptford Church Street works update - Surface



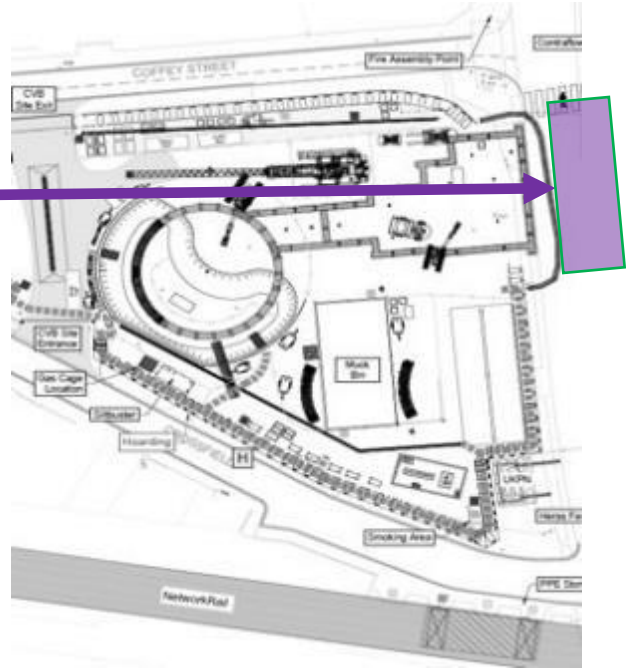
Surface:

- Electrical kiosk complete
- Ducting and drainage installation around kiosk complete
- Ventilation columns foundation complete

Next:

- Kiosk waterproofing and internal equipment installation
- Completion of ducting across site
- Installation of cables between structures
- Commissioning

Deptford works update – Combined Sewer Overflow (CSO)



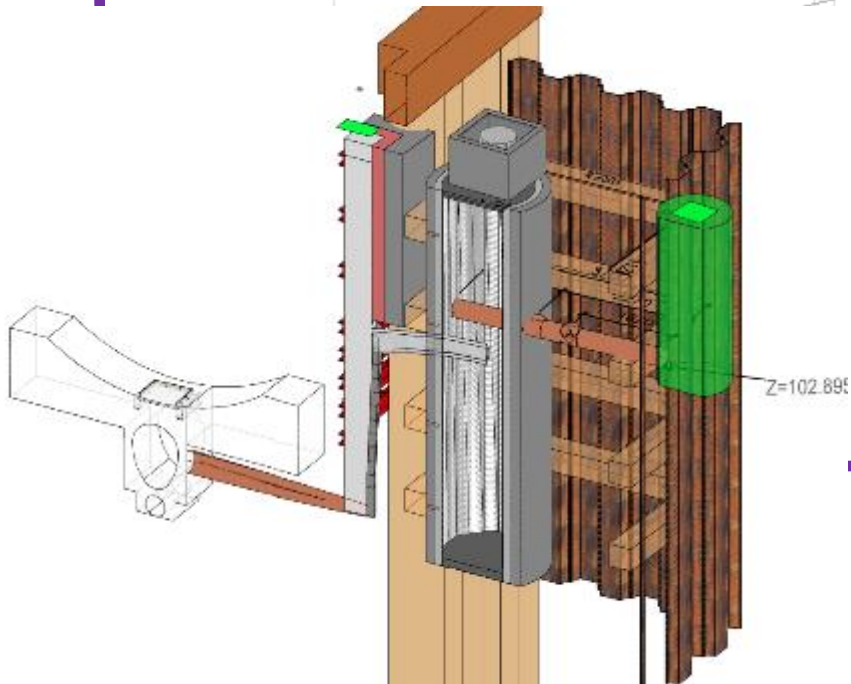
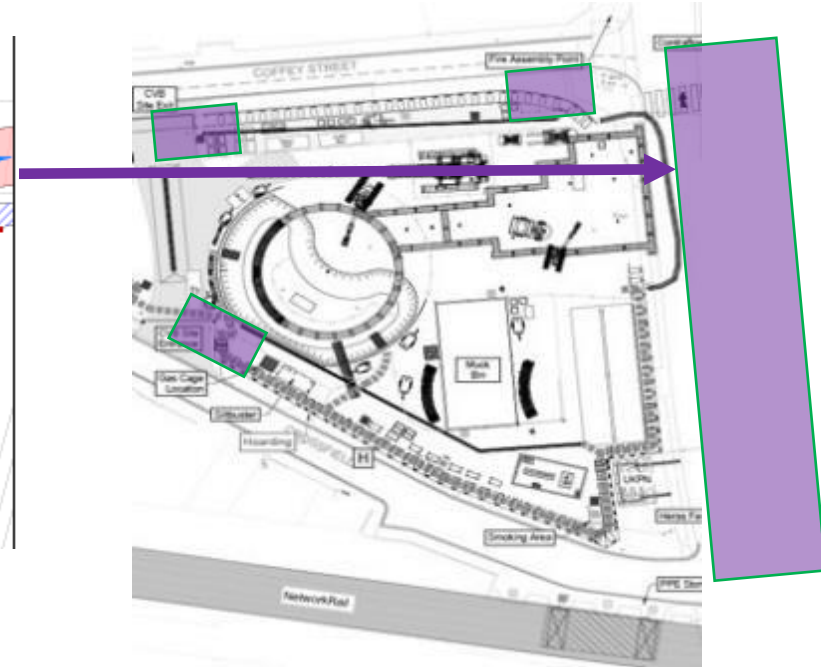
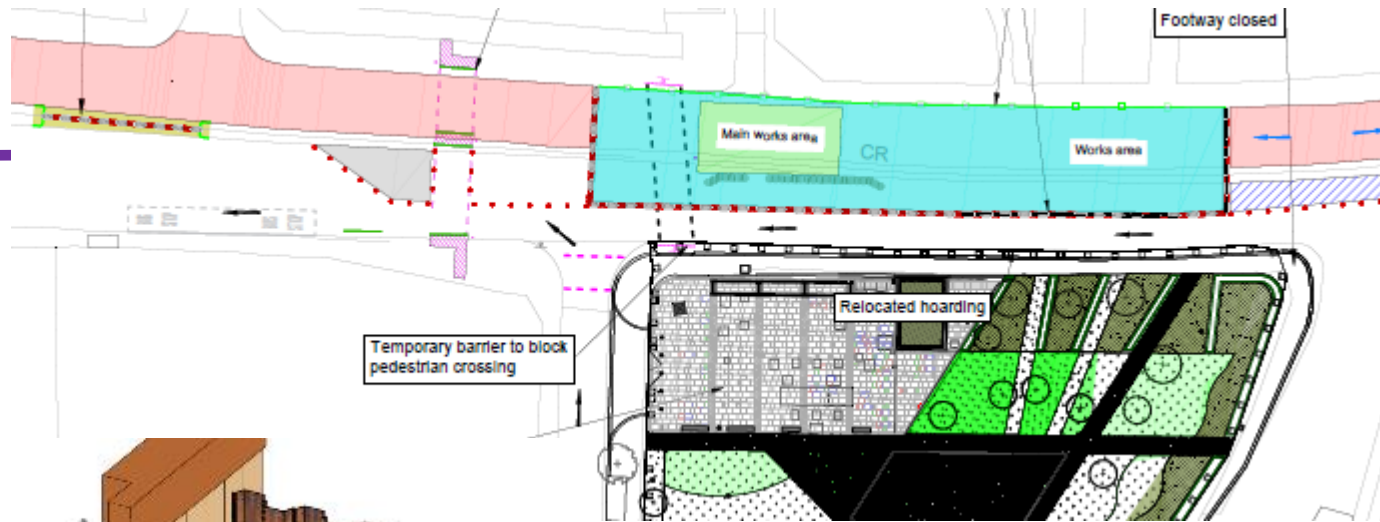
Progress:

- Internal structures (slab, walls, in situ roof, stairs & balustrades) on-going
- Flume hanging structure removed
- Watertightness injections on-going



Next: completion of injections (nights), removal of temporary flume (weather and tide dependant), completion of internal structures, roof slab construction, equipment installation

Deptford Works Update – Bronze Street Sewer & highway works



New:

- New park accesses construction
- Highway reinstatement over Combined Sewer Overflow
- Setting up a new traffic management system
- Bronze Street sewer manhole construction
- Highway reinstatement

Deptford Church Street - Look Ahead

	2023												2024													
	1	2	3	4	5	6	7	8	9	10	11	12	1	2	3	4	5	6	7	8	9	10	11	12		
Shaft works	[Blue bar]												1	2												
Air Treatment chamber, including drainage connection and equipment installation	[Yellow bar]																									
CSO works	[Purple bar]												1	2	3											
Bronze street sewer works & highway works																										
MEICA works, testing and commissioning																										
Surface works, Landscaping and site reinstatement	[Orange bar]												[Orange bar]													



Deptford – Environment Summary: Mar 2023 - Oct 2023

Noise monitoring since last meeting

- No Section 61 noise exceedances in the last 6 months

Air quality monitoring

- No air quality exceedances in the last 6 months (24h PM10)

Any exceedances shown by our monitors are investigated thoroughly after we are alerted and are reported to the local authority.

GREENWICH PUMPING STATION

LUCAS TRUFLANDIER



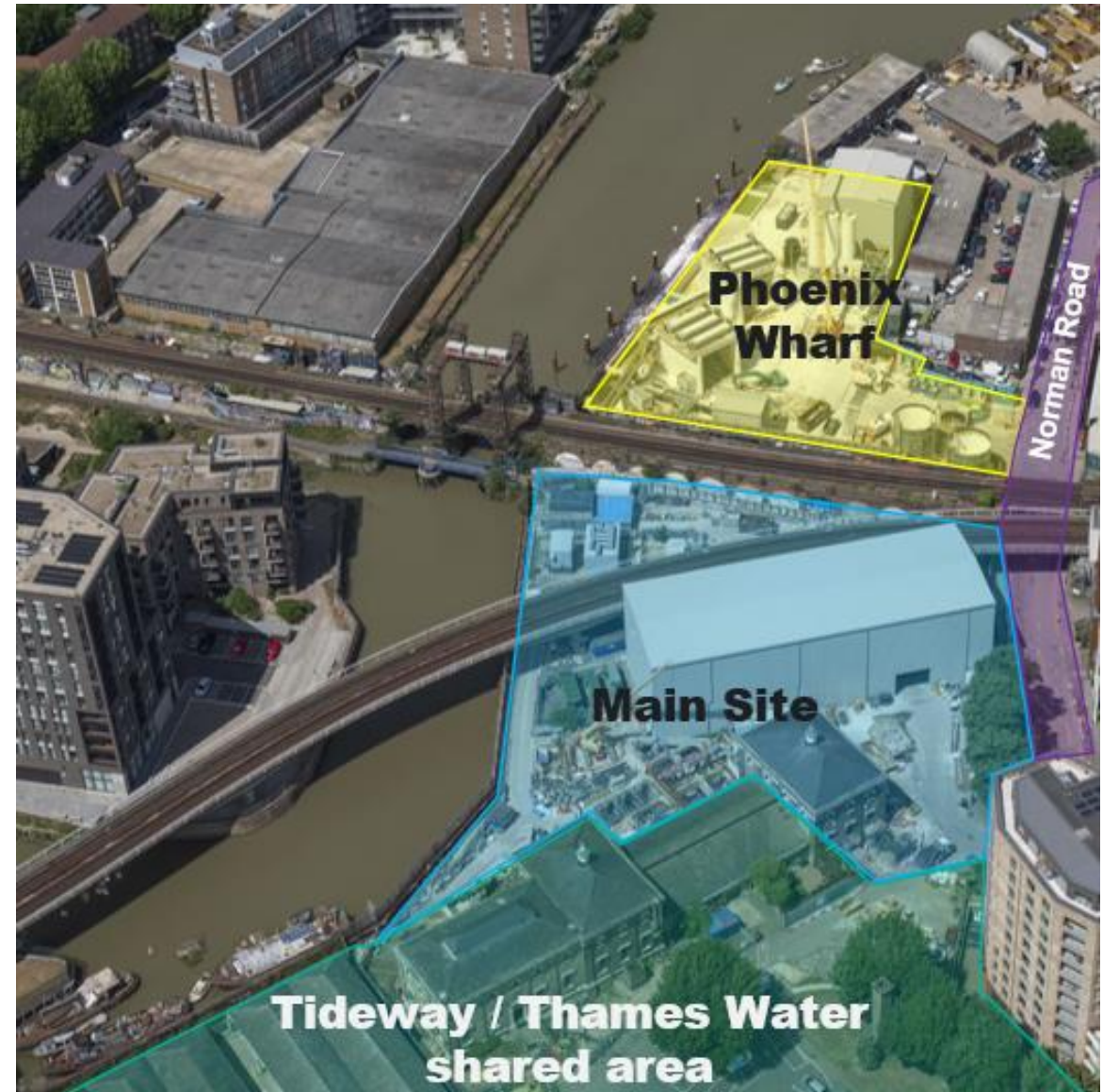
Tideway



Aerial Aug 2023

Greenwich Pumping Station – recent progress

- All shaft internal concrete structures are complete
- Shaft cover slab has been installed
- All penstocks have been installed inside the Interception Chamber
- The external refurbishment of the East Beam Engine House has started



Inside the acoustic enclosure



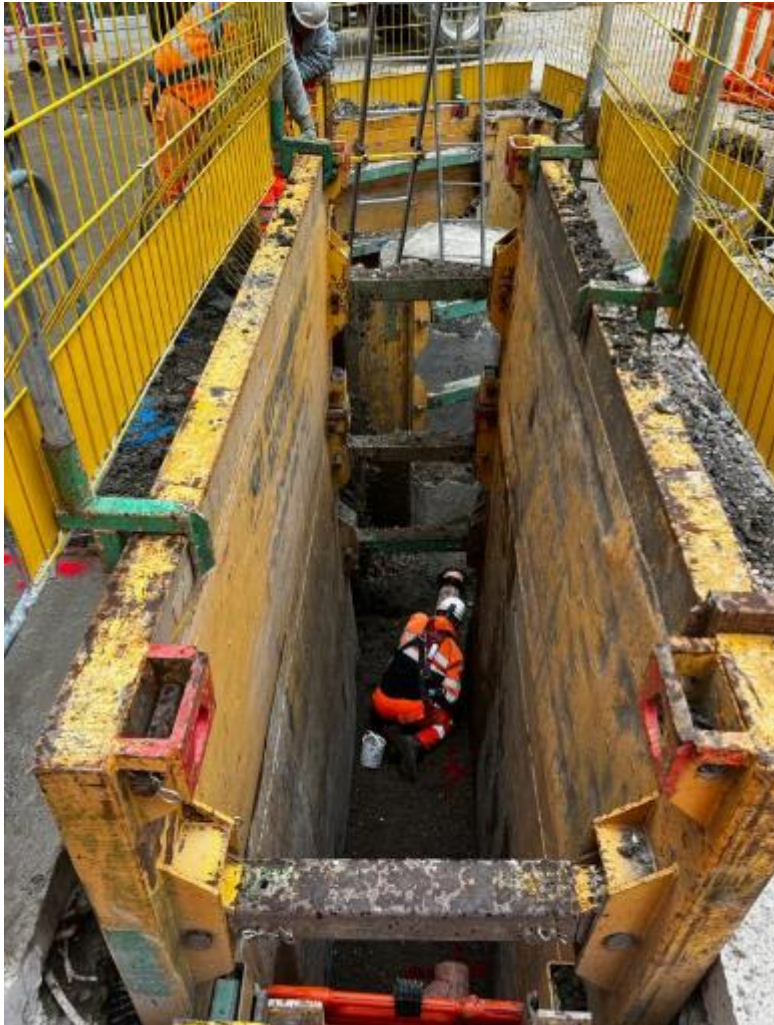
Interception chamber

- Construction of cover slab
- Installation of mechanical penstocks and gates
- Removal of base columns of acoustic enclosure over the interception cover slab



Beside the East Beam Engine House

- Deep drainage and ventilation ducting installation (3m to 5m below ground level)



Inside the East Beam Engine House

- Installation of cable containment on-going



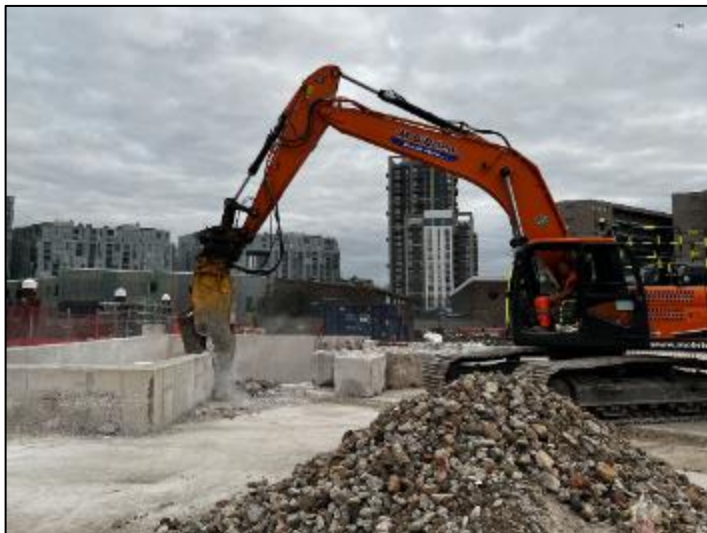
East Beam Engine House Refurbishment

- Refurbishment of external façade and roof on-going



Over to Phoenix Wharf

- Reinstatement of 3 “muck bins” completed



Greenwich – next six months

Deptford Creek reinstatement.

Jan-24 to May-24
Mon-Fri, 8:00am-6:00pm

**Mon-Fri, 10:00pm-7:00am
(25% of time)**

Sheet piles extraction

December 2023
Mon-Fri, 8:00am-6:00pm

Temporary slab & foundation removal

Jan-24 to Mar-24
Mon-Fri, 8:00am-6:00pm

Civil Works (surface)

Nov-23 to Dec-23
Mon-Fri, 8:00am-6:00pm,
Sat 8:00am-1:00pm

Cabling, instrumentation works (surface)

Dec-23 to Feb-24
Mon-Fri, 8:00am-6:00pm

Civil works (inside enclosure)

Nov-23 to Jan-24
Mon-Fri, 7:00am-7:00pm
Sat: 8:00am-1:00pm

Acoustic enclosure dismantling

Dec-23 to Mar-24
Mon-Sat, 10:00pm-7am

Drainage & Ducting Installation

Nov-23 to Dec-23
Mon-Fri, 8:00am-6:00pm

Building external refurbishment

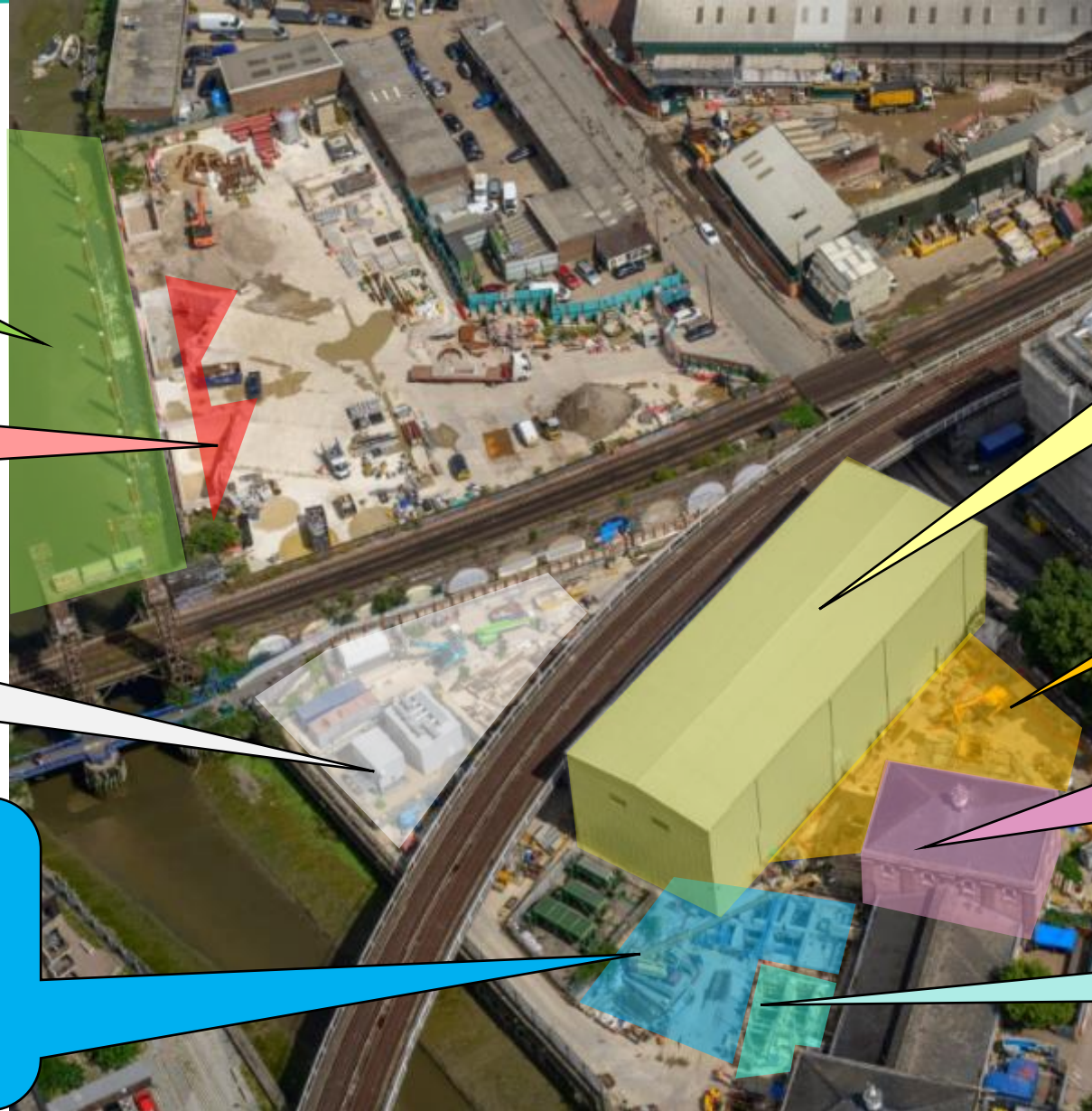
Nov-23 to Jan-24
Mon-Fri, 8:00am-6:00pm

Building internal works

Nov-23 to Mar-24
Mon-Fri, 8:00am-6:00pm

Sewer activities (underground)

Jan-24 to Apr-24
Mon-Fri, 7:00am-7:00pm



Acoustic enclosure dismantling and removal

Civil works (inside enclosure)

Nov-23 to Jan-24

Mon-Fri, 7:00am-7:00pm, Sat: 8:00am-1:00pm

Acoustic enclosure dismantling

Dec-23 to Mar-24

Mon-Sat, 10:00pm-7:00am



Kirtling Street before (left) and after (right) shed removal



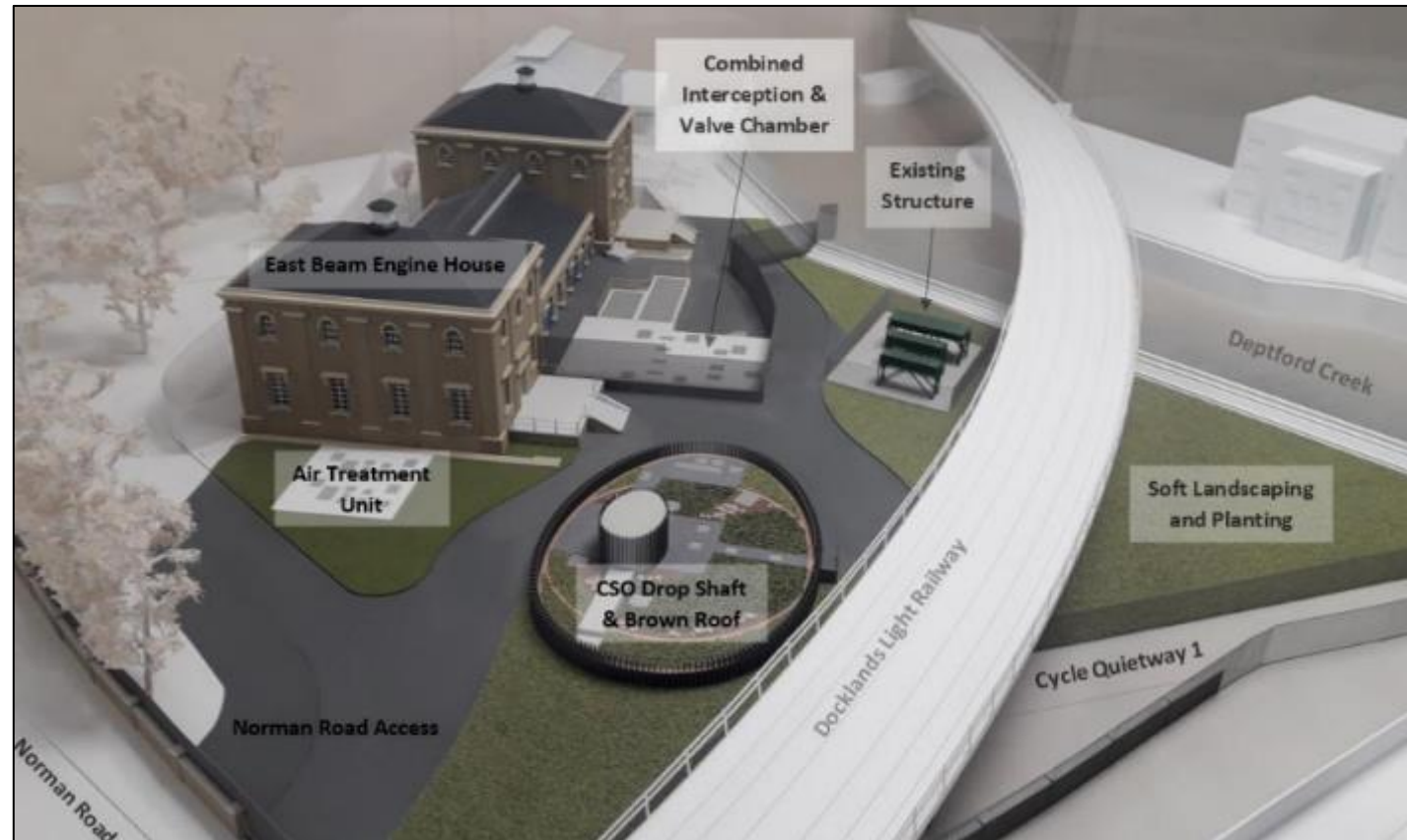
Carnwath Road before (above) and after (below) shed removal



Greenwich – landscaping works

Landscaping works on site are due to begin from spring / mid-2024 and include:

- Reinstating the footpath and cycleway
- Installing a brown roof over the shaft
- Surface preparation for soft landscaping



Greenwich – Environment Summary: Mar 2023 - Oct 2023

Noise monitoring since last meeting

- No Section 61 noise exceedances in the last 6 months

Air quality monitoring

- No air quality exceedances in the last 6 months (24h PM10)

Any exceedances shown by our monitors are investigated thoroughly after we are alerted and are reported to the local authority.

MITIGATION

Making a claim if affected by Tideway's work

Who do I go to for advice?

For personal assistance contact our Helpdesk: 08000 30 80 80 or helpdesk@tideway.london

For independent advice contact Independent Advisory Service (IAS) Helpline: 0800 917 8845 or info@tidewayias.co.uk

How do I submit my claim?

The Helpdesk can submit your claim to the Independent Compensation Panel (ICP) on your behalf, or you can submit your claim direct to the ICP: admin@tidewayicp.london

You can download the claim form from the Tideway website:

www.tideway.london/help-advice/compensation-information/Independent-Compensation-Panel

CONTACT US

- If you do have any questions or enquiries, please contact the Tideway Helpdesk:
- Telephone: **0800 030 80 80**
- Email: **Helpdesk@Tideway.London**

Legacy and community investment

Paul Whitehouse was at our Greenwich site to record “Our Troubled Rivers” for BBC



Shaping Our World 2023



Chapter One reading program school visit



Work Experience – Tideway East has hosted 17 students and volunteered more than 490 STEM hours supporting them and others in 2023

Tideway supported Pride



London Youth Rowing Skills Day



Legacy and community investment

Women in Engineering Awards



Juvenile Diabetes Research Foundation Ltd London Marathon run



Ben Nevis climb for Bangladeshi maternity ward



Children's liver disease charity London Marathon run



Macmillan Cancer Support bake sale



Royal Marsden Hospital run



Tideway

RECONNECTING LONDON WITH THE RIVER THAMES

#SuperSewer

www.tideway.london