

CHAMBERS WHARF COMMUNITY LIAISON WORKING GROUP



Chair – Patricia Brown

14 November 2023

Content

| Topic | |
|--|---|
| Welcome, introductions, apologies | Patricia Brown |
| Notes and actions from last meeting | Patricia Brown |
| Updates from Chambers Wharf project team <ul style="list-style-type: none">• Construction update and upcoming activities• Noise and air quality• Mitigation and contacting Tideway• Legacy and Community Investment | Luke Rees Matthew Gardiner Emily Black Rudi Masukume |
| Southwark Council Community Enhancement Fund and Section 106 updates | Southwark Council Jacqueline Christie |
| Feedback and discussion | All |
| Any other business | All |
| End | |

Outstanding Actions

| Open actions from previous meetings | | | |
|--|--|----------------|---|
| Meeting | Action | Responsibility | Status |
| 5 Jun | The team to speak to MoLA and arrange a session on site archaeology for hopefully later in the year. | Tideway | Open – Tideway have arranged an evening slot with MoLA at the Chambers Wharf officers for 14 December 2023. Residents to be invited after the meeting. |
| 5 Jun | Tideway to provide details of the filter suppliers for resident with air conditioning units | Tideway/CVB | Open – CVB have ordered some extra filters. Tideway to call resident when they are delivered so she can collect from reception. |
| 21 Nov | CVB to review how they are communicating piling installation and cofferdam removal with residents. | CVB | Open and ongoing – further information sheets for impacted residents are planned for cofferdam removal. We have used the weekly e-newsletters to provide greater detail for the piling works. |
| 21 Nov | CVB to provide greater clarification of the expected impact of cofferdam removal at next meeting. | CVB | Open and ongoing – this is again included in today's slides |
| 21 Nov | Future developer to be invited to CLWG meeting at appropriate time. | Tideway | Open – developer to be invited in due course. No change from last meeting. |
| 4 July | Team to present at future CLWG on the reused and recycled elements of the project. | CVB | Open and ongoing – team will continue to highlight where we have reused and recycled elements of the project. |
| Closed actions from previous meetings | | | |
| 5 June | Site team to double check that the appropriate noise mitigation is in place for the capping beam works. | CVB | Closed - appropriate noise mitigation measures were in place |
| 5 June | Tideway to contact resident and make an Independent Compensation Panel (ICP) application on their behalf for temporary daytime respite for alternative office accommodation. | Tideway | Closed |
| 5 June | The team will review images of the piling rig and advise what the 'bell' fixture is for. | CVB | Closed – team unaware what fixture resident was referring too. |
| 5 June | Tideway to arrange for the statistics relating to the Independent Compensation Panel and Chambers Wharf be provided to the Councillor. | Tideway | Closed |

PROJECT OVERVIEW



| Tideway WEST (BMB) | | Tideway CENTRAL (FLO) | | Tideway EAST (CVB) | | Thames Water | |
|--------------------|-----------------------------|-----------------------|-------------------------------|--------------------|-------------------------------------|--------------|--------------------------------|
| 1 | Acton Storm Tanks | 8 | Falconbrook Pumping Station | 17 | Chambers Wharf | 16 | Shad Thames Pumping Station |
| 2 | Hammersmith Pumping Station | 9 | Cremorne Wharf Depot | 18 | Earl Pumping Station | 22 | Bekesbourne Street |
| 3 | Barn Elms | 10 | Chelsea Embankment Foreshore | 19 | Deptford Church Street | 24 | Beckton Sewage Treatment Works |
| 4 | Putney Embankment Foreshore | 11 | Kirtling Street | 20 | Greenwich Pumping Station | | |
| 5 | Dormay Street | 12 | Heathwall Pumping Station | 21 | King Edward Memorial Park Foreshore | | |
| 6 | King George's Park | 13 | Albert Embankment Foreshore | 23 | Abbey Mills Pumping Station | | |
| 7 | Carnwath Road Riverside | 14 | Victoria Embankment Foreshore | | | | |
| | | 15 | Blackfriars Bridge Foreshore | | | | |

| MAP KEY | | | |
|----------------|------------------------------------|------------------|--------------------------|
| ● (Orange) | Main tunnel drive tunnel site | ▬ (Green) | Main tunnel |
| ● (Black) | Main tunnel reception site | ⋯ (Dotted Green) | Connection Tunnels |
| ● (Teal) | CSO site | ▬ (Black) | Lee Tunnel |
| ● (Light Teal) | Short connection tunnel drive site | ◀▶ (Black) | Proposed drive direction |
| ● (Yellow) | Long connection tunnel drive site | ● (Purple) | West works site |
| ○ (White) | System modifications | ● (Yellow) | Central works sites |
| | | ● (Red) | East works site |

CONSTRUCTION UPDATE

Luke Rees – Project Manager, CVB



Tideway



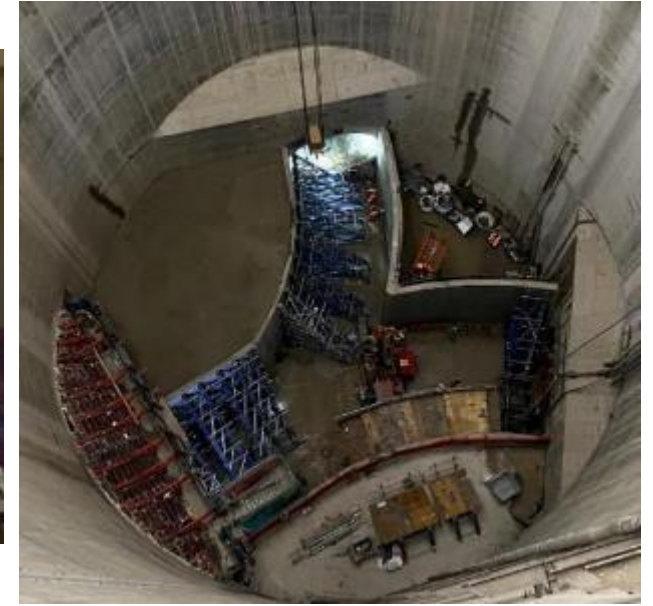
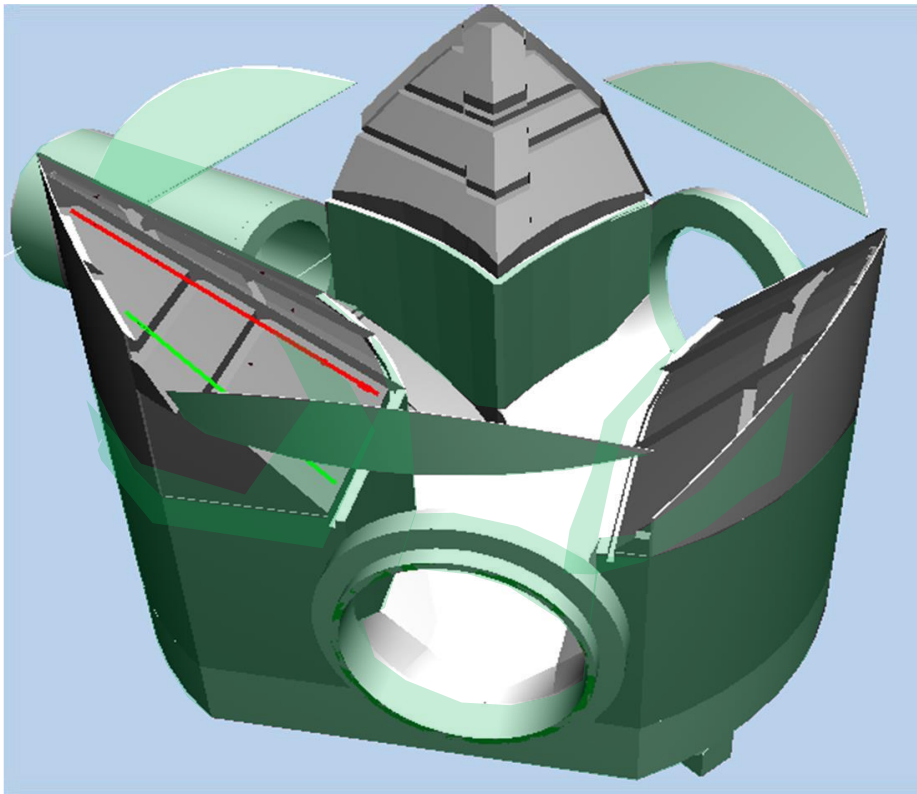
TUNNEL PROGRESS

- Secondary lining of Greenwich connection tunnel completed. Shutters and tunnel gantries removed.
- Over the 4.5km of the tunnel - 13800m³ concrete has been poured.



SHAFT PROGRESS - BENCHING WORKS

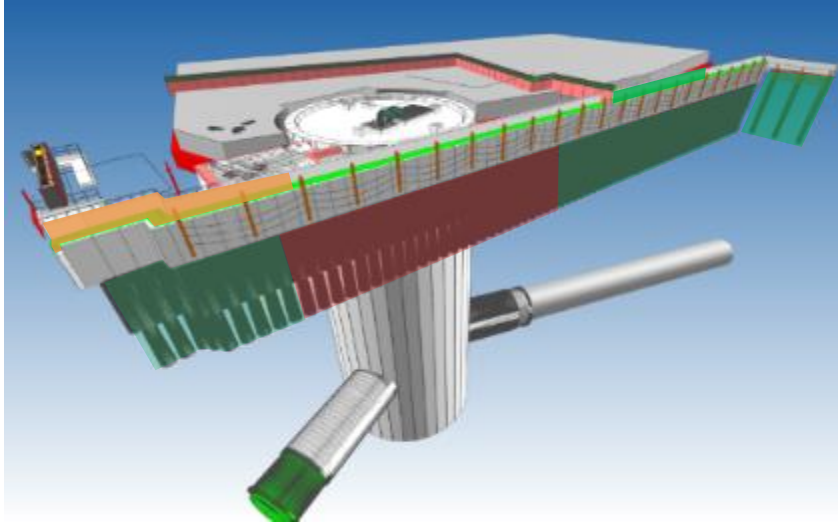
- Shaft benching works underway
- 3000m³ of concrete to form the benching structure.



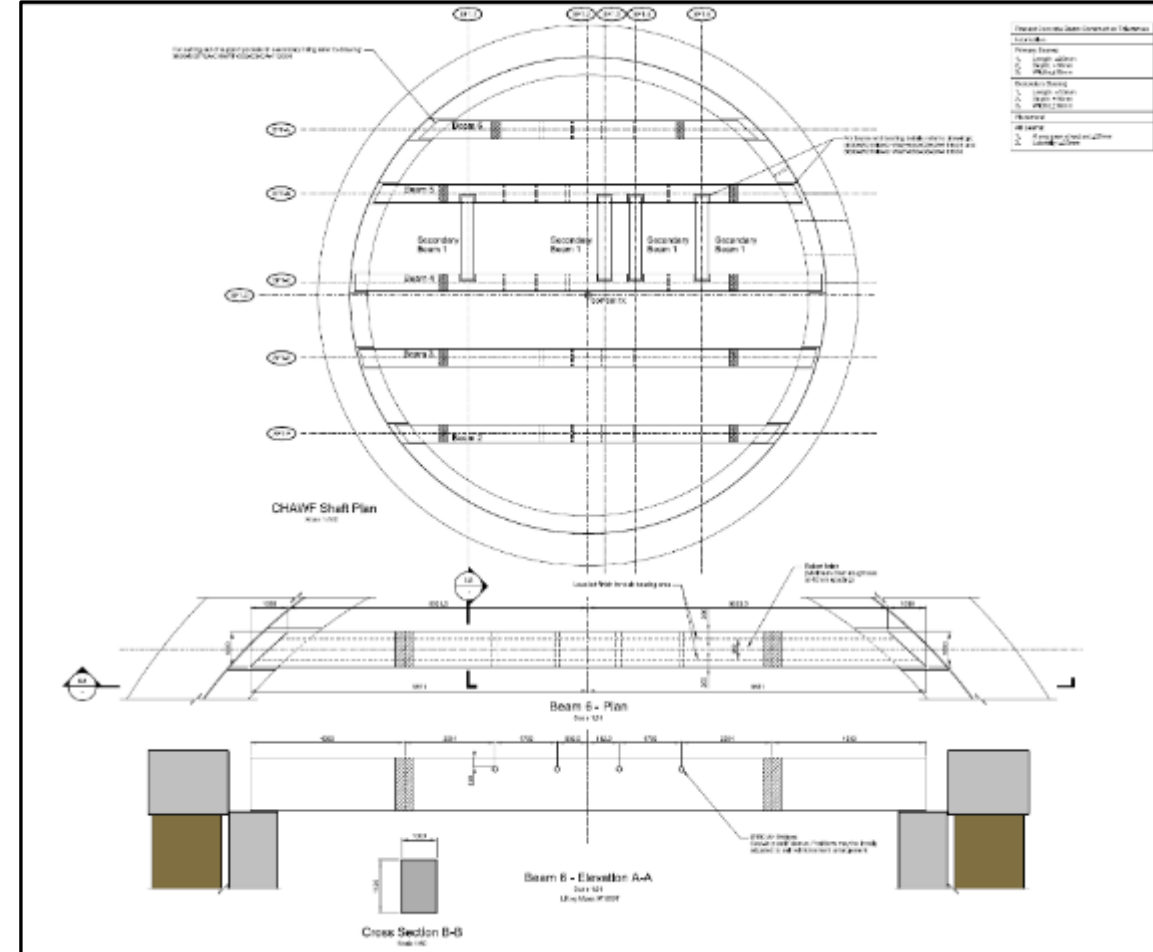
SURFACE CIVILS PROGRESS - AIR TREATMENT UNIT (ATU)



SURFACE CIVILS PROGRESS - RIVER WALL CAPPING BEAM



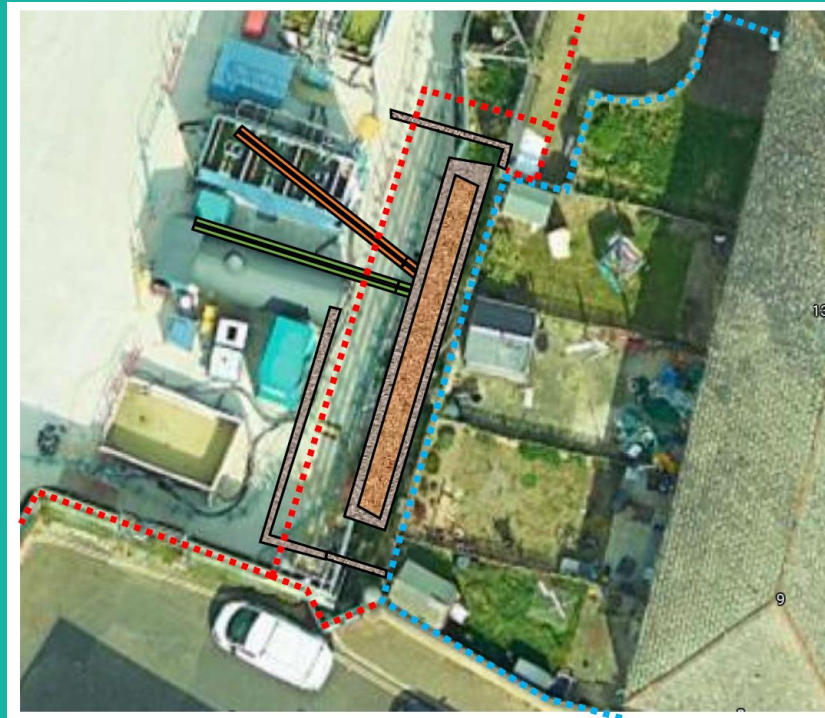
SURFACE CIVILS PROGRESS - PRECAST BEAMS



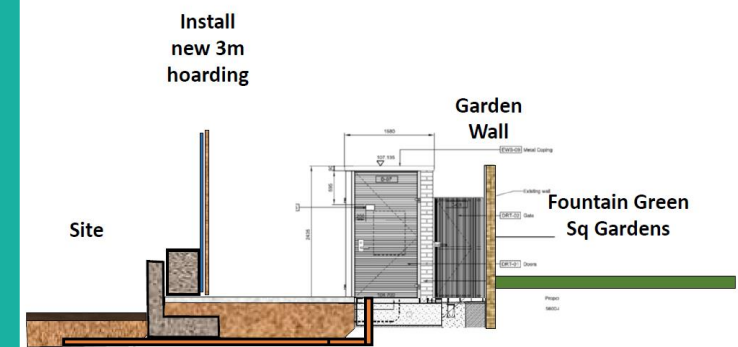
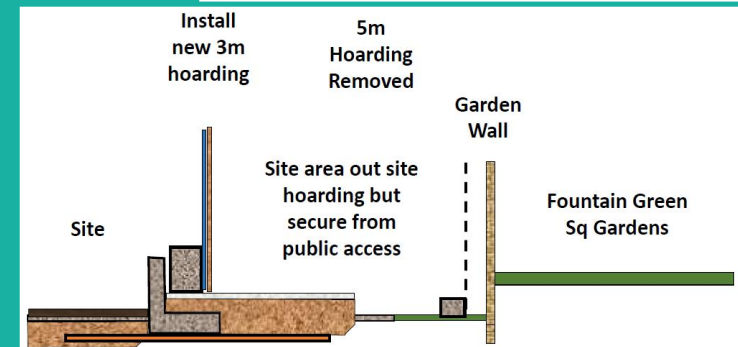
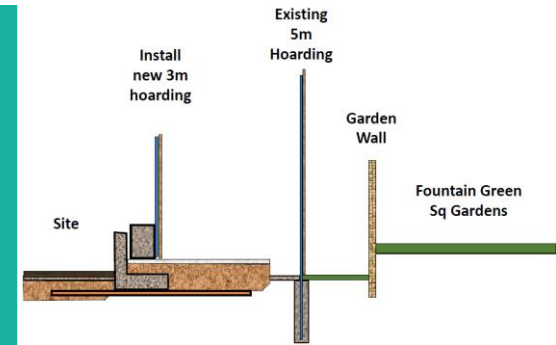
WORKS PLANNED - NOV 2023 TO MAY 2024

Kiosk construction

- Ducting and drainage installation underway
- Concrete works for small retaining walls and slab.
- Hoarding move will taking place during construction.
Dec 23
- Kiosk building construction.



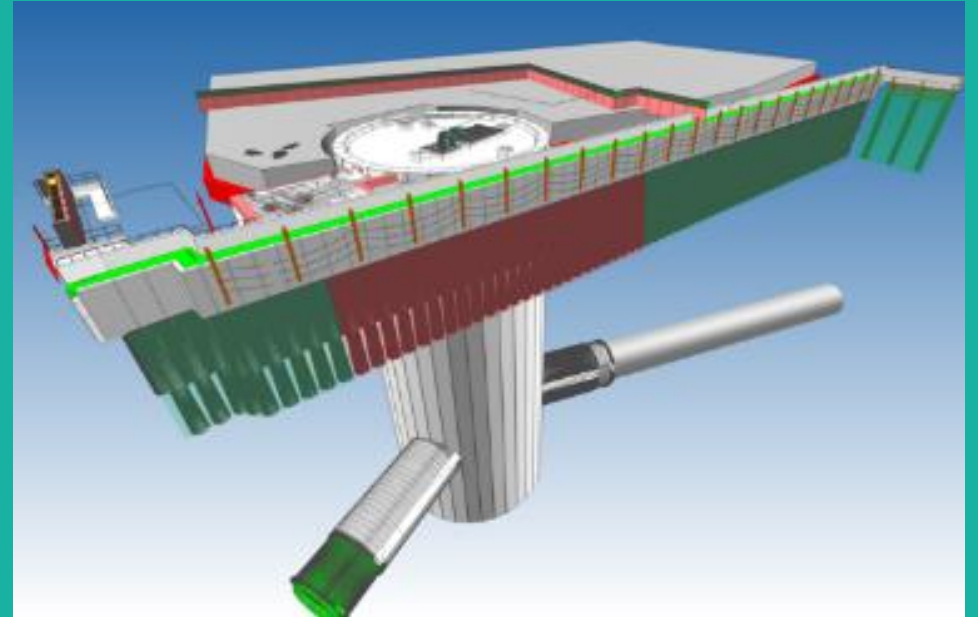
- Existing 5m hoarding
- Garden Wall



WORKS PLANNED

Capping beam construction and piling for river wall construction

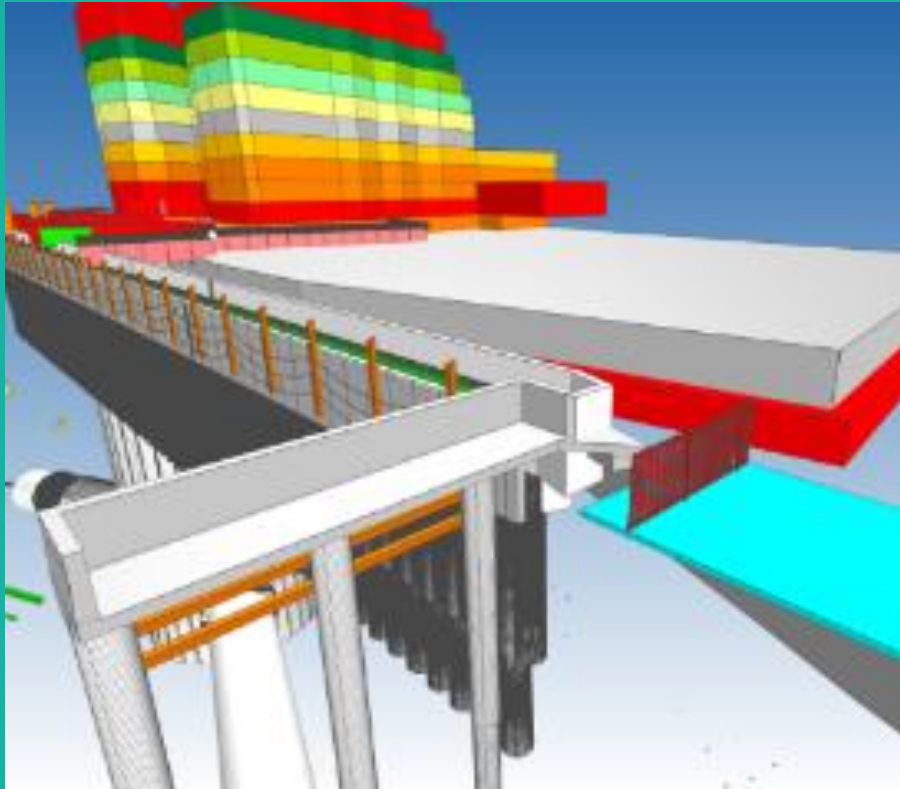
- Capping beam work will continue to March 2024, involving cropping piles and pouring the steel reinforced concrete slab.
- In May 2024 we will start piling on the central section of the river wall.
- We have 60 piles remaining to install which will complete the installation of concrete piles on site.



WORKS PLANNED

Lunar House Jetty works

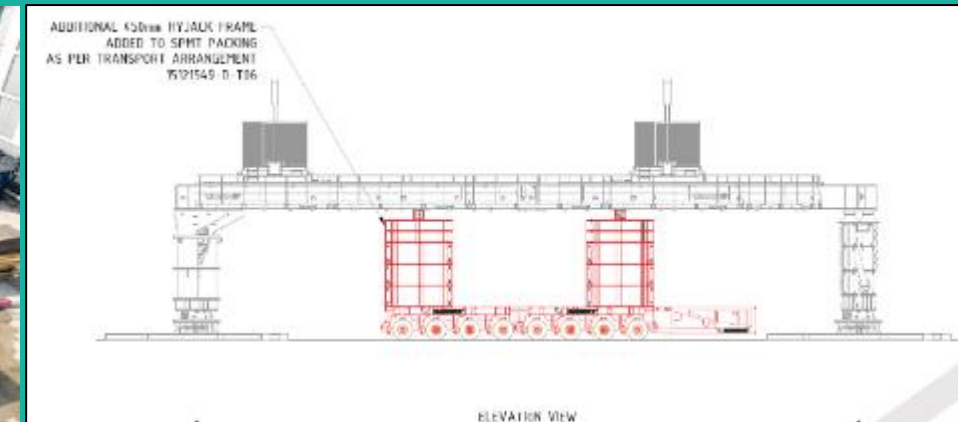
- Construction of concrete pile cap, slab and river wall to the east end of Lunar House Jetty.
- The piles have already been installed.



WORKS PLANNED

Installation of precast beams

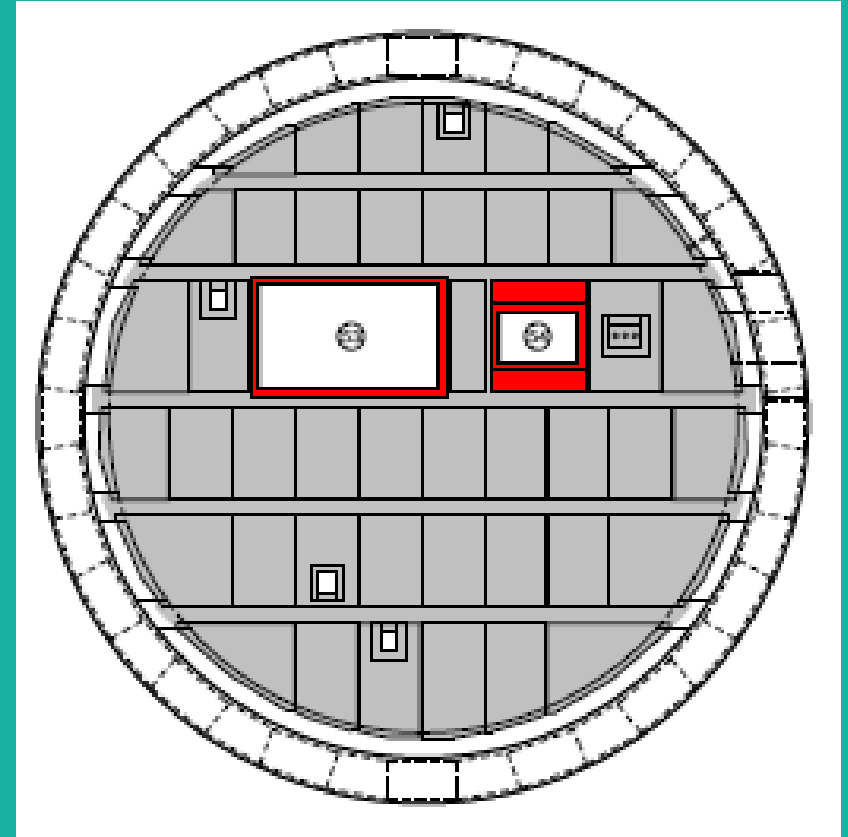
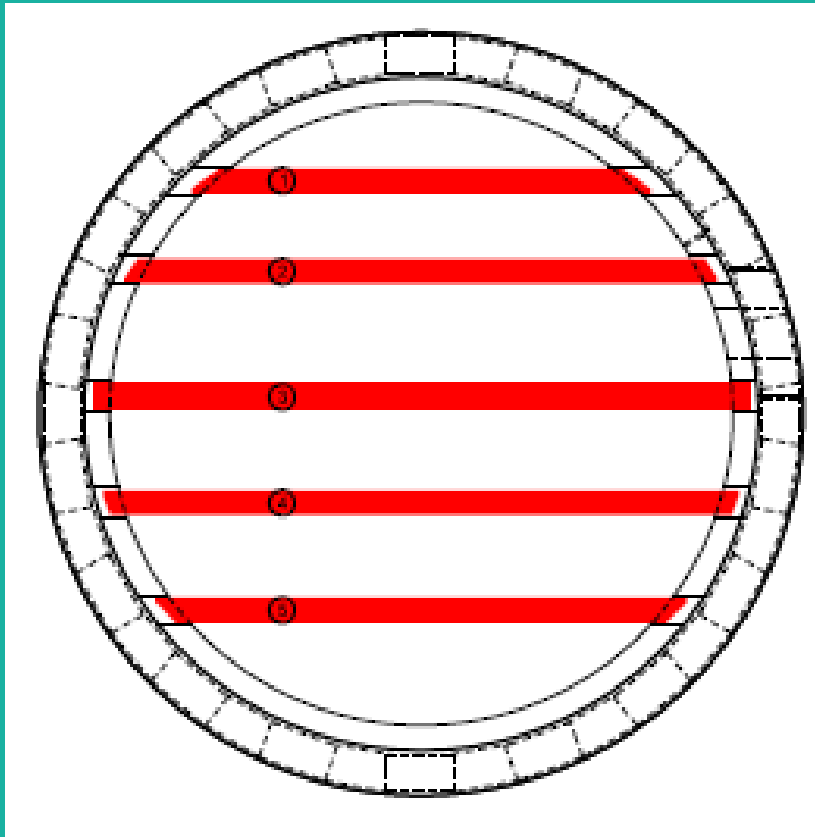
- 5 precast concrete beams to be installed over the shaft.
- Works start Mon 13 Nov for 6 weeks.
- Gantry structure will be erected on the north key and then installed in the acoustic enclosure.
- SPMTs (self-propelled modular transporters) will then be used to transport each beam, inside the shed, where the gantry will lift into position.
- Due to the complexity of these works, this will be carried out during extended working hours using 3 weekends during the period.



WORKS PLANNED

Pre-cast slab cover beam installation

- 5 beams to be installed.
- 44 pre-cast concrete planks to be installed.
- Reinforced concrete slab to be installed.



WORKS PLANNED

Acoustic enclosure removal

- The removal of the acoustic enclosure will start in January 2024.
- The cladding and insulation will be removed.
- Gantry cranes will be removed for sale.
- Gantry and steel structure will be removed.
- Shed cladding and steel frame will be removed from site by barge for re-use in Rainham.



COFFERDAM REMOVAL METHODOLOGY

Removal of Cofferdam – Summer 24 to Spring 25

- The hinterland and fill will be removed using excavators and material removed by barge.
- The cells will then be excavated, and sheets removed in a sequence working from east to west.
- Most of the sheet piles will be removed using a GEKEN silent piler.
- The remaining piles that cannot be removed using the GEKEN will be removed using a vibro hammer.



DELIVERY BY BARGE

Main Tunnel construction

- 730,000t of excavated material removed.
- 3047 tunnelling rings delivered.

Secondary Lining of Greenwich Tunnel

- 26,000t of aggregates delivered.

Shaft Benching

- 6,000t of aggregates delivered.
- This is the equivalent of 90,000 lorry movements.



UPCOMING PROGRAMME OF WORKS

| | November | December | January | February | March | April | May |
|--|----------|----------|---------|----------|-------|-------|-----|
| Kiosk Construction | | | | | | | |
| Movement of Hoarding | | | | | | | |
| Capping Beam Construction West | | | | | | | |
| Lunar House Jetty Works | | | | | | | |
| Shaft Benching Works | | | | | | | |
| Removal of Batching Plant | | | | | | | |
| Pre-cast Beam Installation | | | | | | | |
| Pre-cast Shaft Covers | | | | | | | |
| Shaft cover Slab | | | | | | | |
| Removal of Acoustic Shed | | | | | | | |
| Guidewall and River Wall Piling | | | | | | | |

NOISE AND AIR QUALITY

Matthew Gardiner, Environment Manager, CVB



Tideway



ENVIRONMENT SUMMARY: JUL 2023 – OCT 2023



| | Section 61 Consent Exceedances | Air Quality Exceedances (24h PM) | Comments |
|--------|--------------------------------------|--|---|
| Jul 23 | 4 | 0 | Noise exceedances related to breaking works on eastern side of site within close proximity to the monitor. Constraints of monitoring system made this difficult to manage. CVB alerted Local Authority, and reduced programmed concrete times until a noise model solution was provided |
| Aug 23 | 0 | 0 | |
| Sep 23 | 1 | | Noise exceedance related to breaking works within close proximity to the monitor for Luna House tie in works. CVB alerted Local Authority, and reduced programmed concrete breaking times to align with Section 61 thresholds and enhanced reporting system to add greater supervision for addressing S61 constraints |
| Oct 23 | 0 | 0 | |

Any exceedances shown by our monitors are investigated thoroughly after we are alerted.

Note: CVB have overhauled their Environmental Monitoring System to ensure continued coverage while 3G services cease UK wide

MITIGATION

Making a claim if affected by Tideway's work

Who do I go to for advice?

For personal assistance contact our Helpdesk: 08000 30 80 80 or helpdesk@tideway.london

For independent advice contact Independent Advisory Service (IAS) Helpline: 0800 917 8845 or info@tidewayias.co.uk

How do I submit my claim?

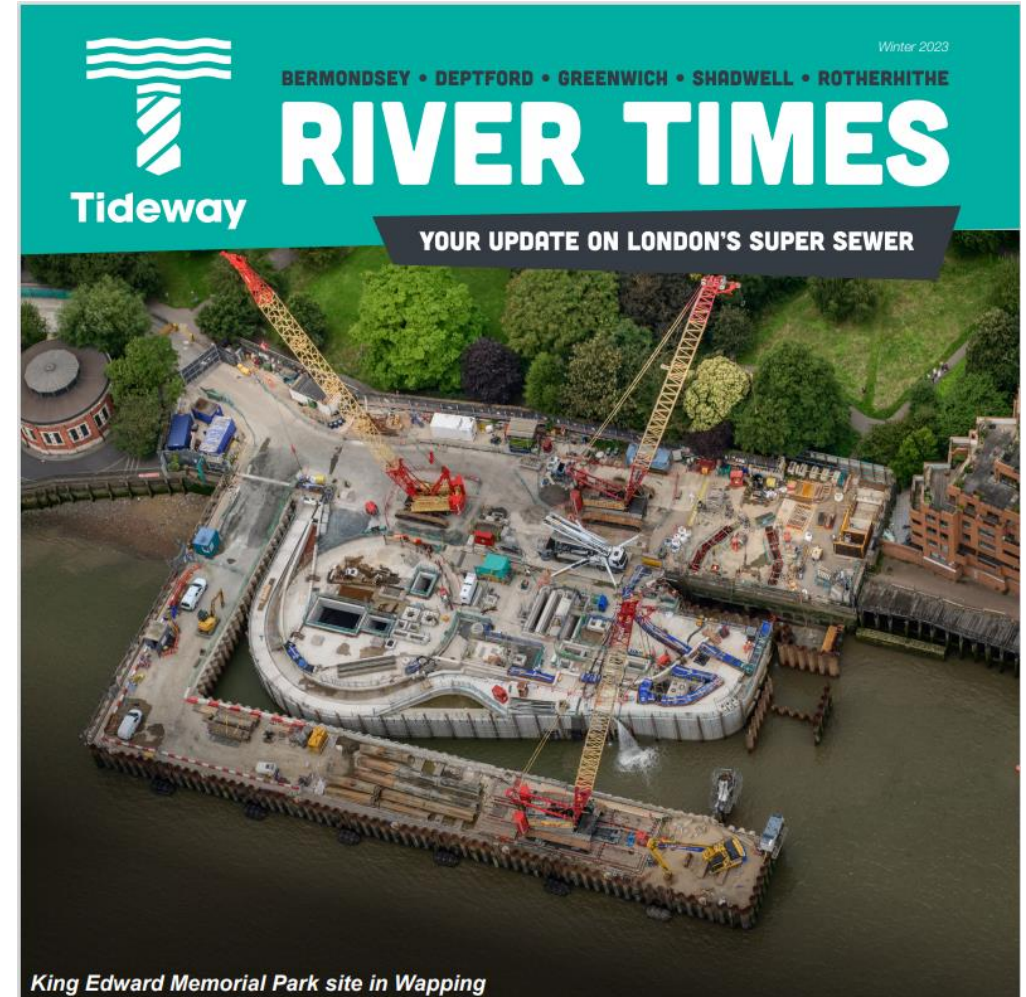
The Helpdesk can submit your claim to the Independent Compensation Panel (ICP) on your behalf, or you can submit your claim direct to the ICP: admin@tidewayicp.london

You can download the claim form from the Tideway website:

www.tideway.london/help-advice/compensation-information/Independent-Compensation-Panel

CONTACTING US

- If you do have any questions or enquiries, please contact the Tideway Helpdesk:
- Telephone: **0800 030 80 80**
- Email: **Helpdesk@Tideway.London**



*Includes Tideway Survey 2023

ARCHAEOLOGY UPDATE



Join the team and Museum of London Archaeology staff to find out more about the latest archaeological finds at the Chambers Wharf site

- Chambers Wharf offices
- 14 December
- 6.30pm start

LEGACY AND COMMUNITY INVESTMENT



Chris Whitty Tour of Chambers Wharf

Volunteering in Southwark



Shaping Our World 2023



Chapter One Reading programme school visit

Community Enhancement Fund Panel visit to Chambers Wharf



Tideway supported Pride in 2023



London Youth Rowing Skills Day



Work Experience – we hosted 17 students and volunteered more than 490 STEM hours supporting them and others in 2023



LEGACY AND COMMUNITY INVESTMENT

Women in Engineering Awards



Juvenile Diabetes Research Foundation - London Marathon



Ben Nevis Climb for Bangladeshi Maternity Ward



Children's liver disease - London Marathon



Macmillan Cancer Support bake sale



London Youth Rowers - National Junior Indoor Rowing Championships



Royal Marsden Hospital run

**UPDATE FROM SOUTHWARK
COUNCIL**

Jacqueline Christie

THANK YOU



Tideway

Any Questions?



Tideway

RECONNECTING LONDON WITH THE RIVER THAMES

#SuperSewer

www.tideway.london