

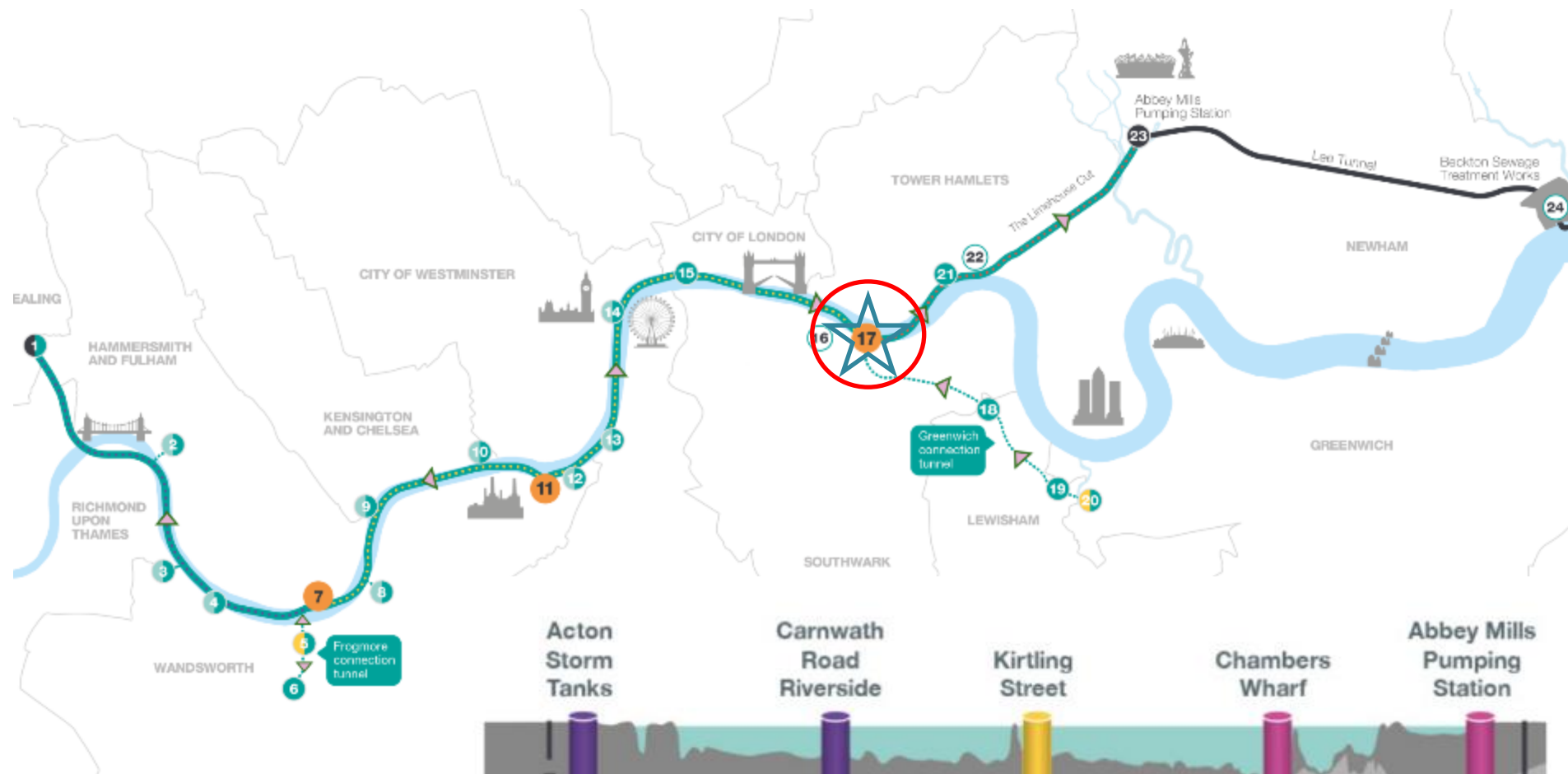


Tideway

Chambers Wharf

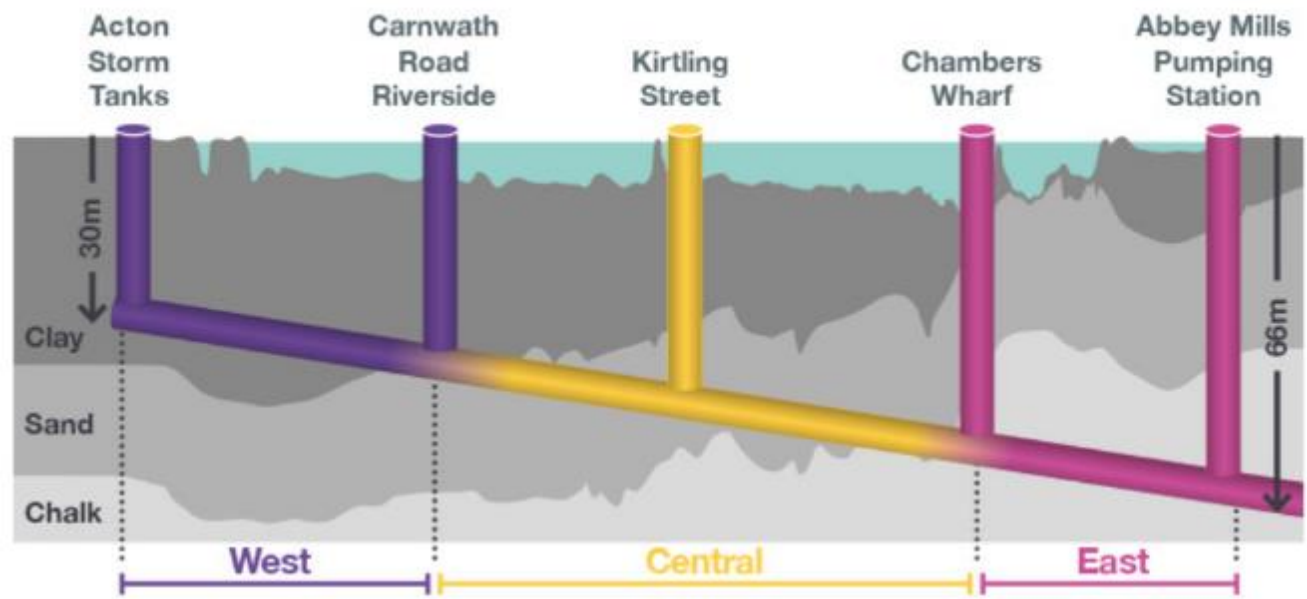
Jack Russell Archaeology Lead Tideway

14th December 2023



Map key

- Main tunnel drive tunnel site
- Main tunnel reception site
- CSO site
- Short connection tunnel drive site
- Long connection tunnel drive site
- System modifications
- Main tunnel
- - - Connection
- Lee Tunnel
- ▲ Proposed
- - - West work
- - - Central work
- - - East work



Pre-2014

- Desk Study and Building Recording for abandoned development
- Foreshore Surveys
- Monitoring test pits



2014/2015

- MOLA land-side Evaluation



2016

- MOLA Foreshore Survey
- MOLA Building Recording of river wall



2018

- MOLA excavation of main shaft



2017

- MOLA monitoring of land-side UXO and obstruction clearance



2016

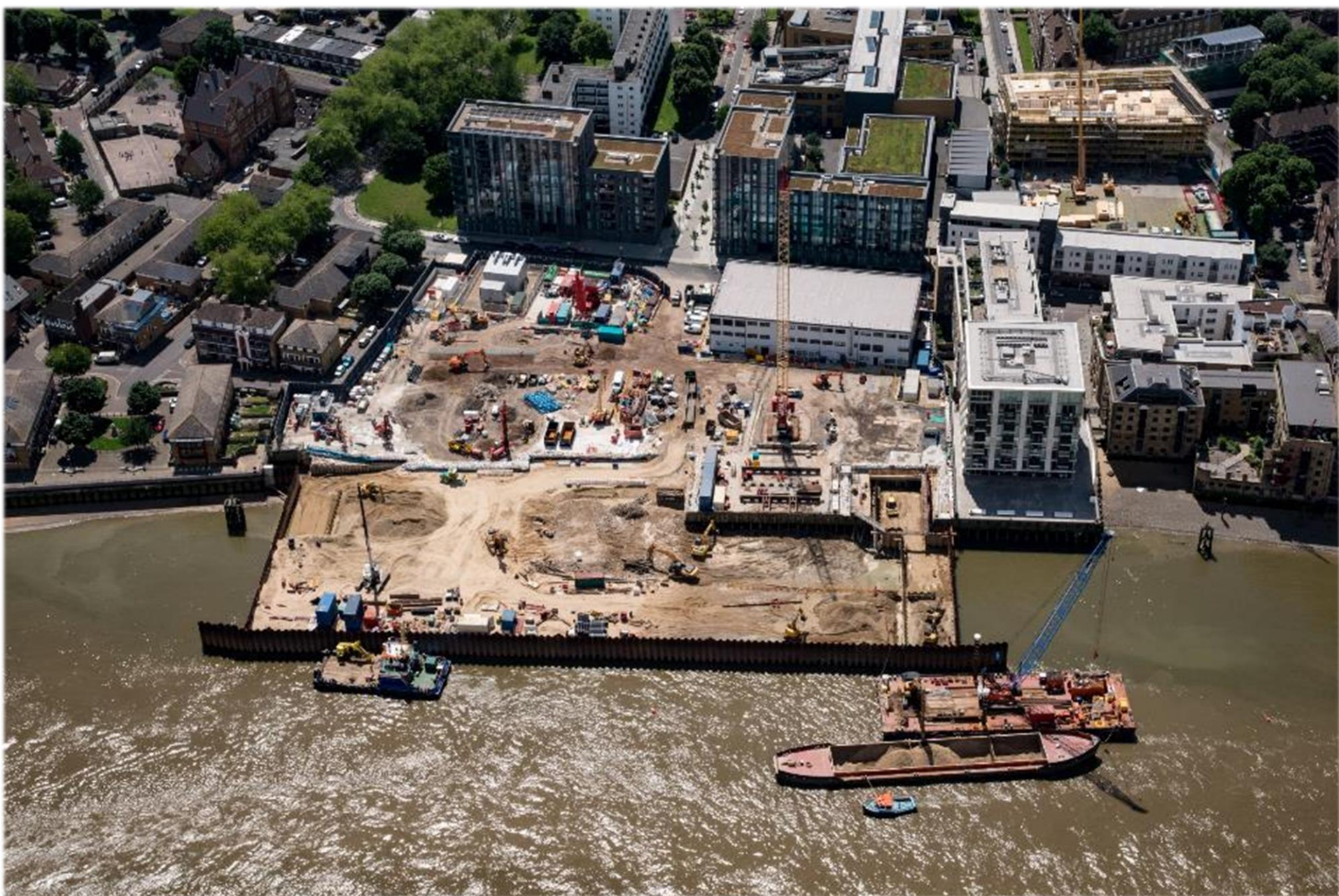
- MOLA monitoring of cofferdam installation on foreshore



CHAMBERS WHARF

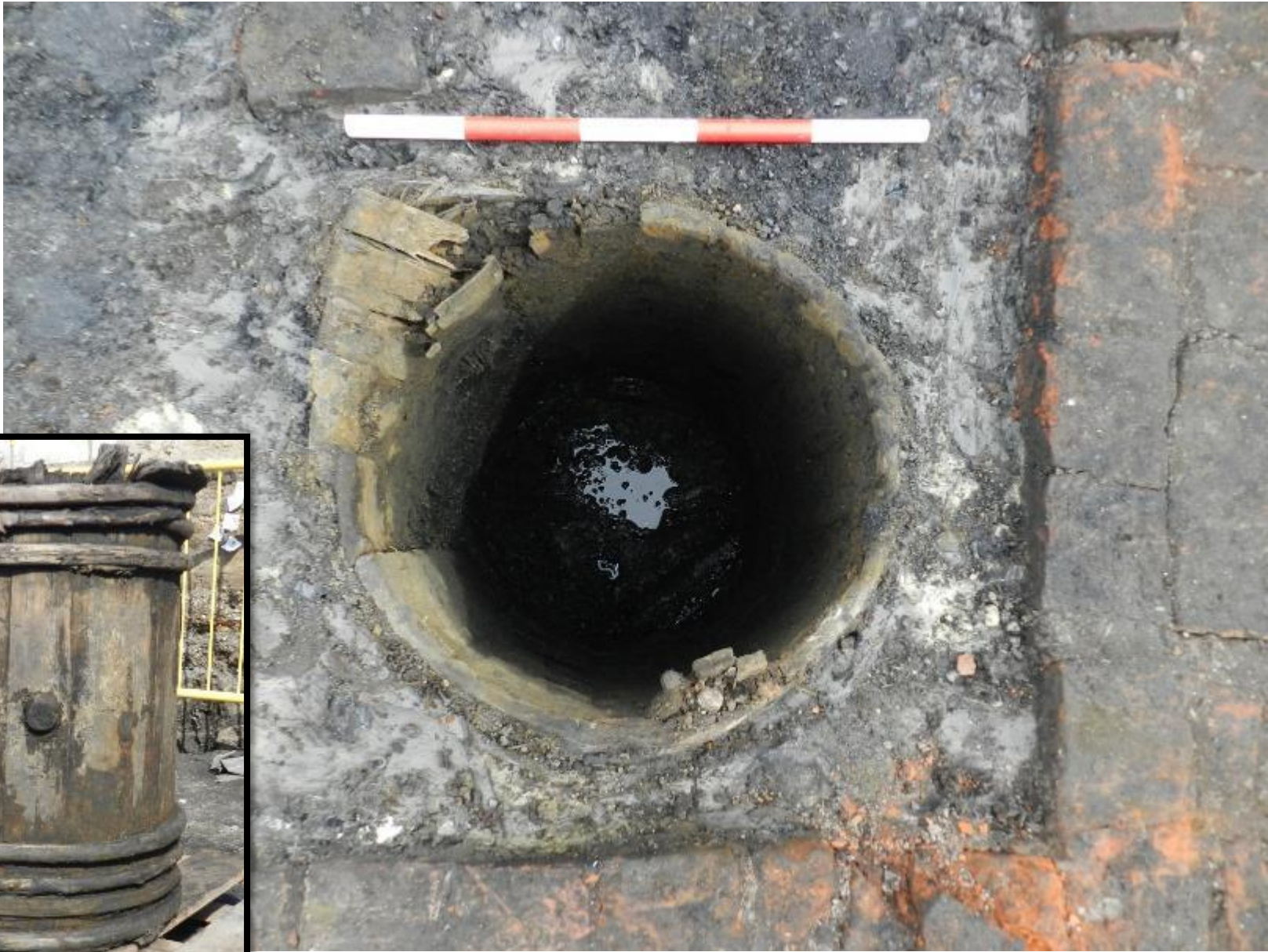








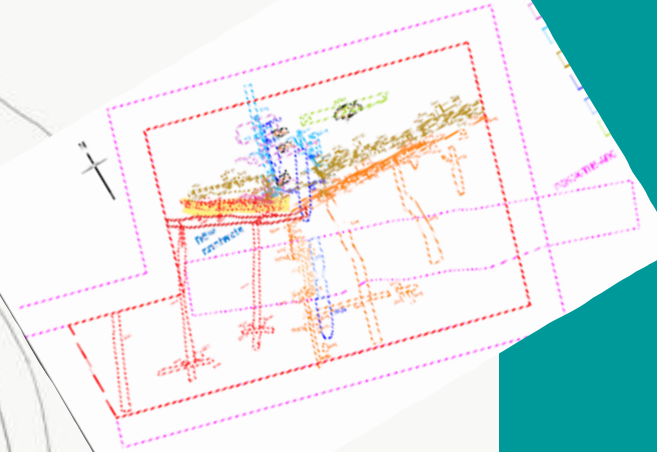
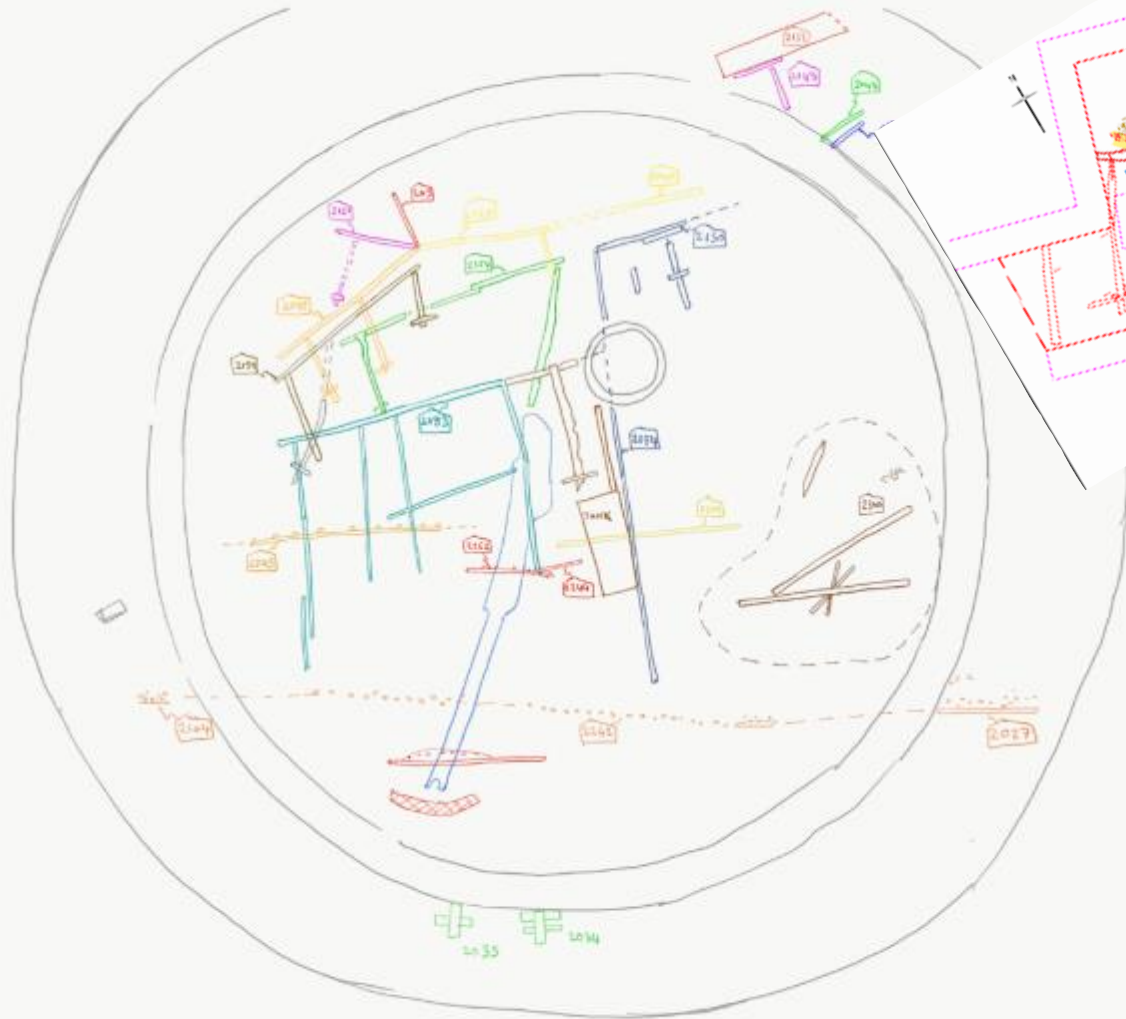








Plan of major structures and their preliminary phasing



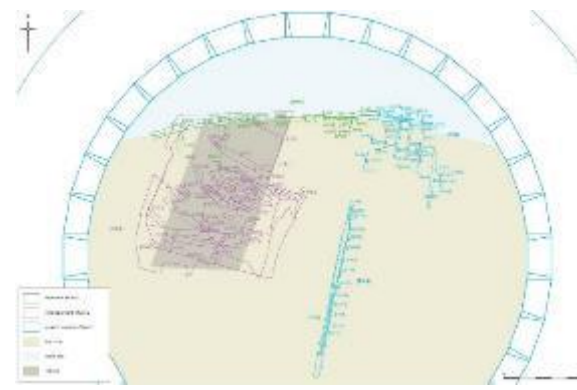
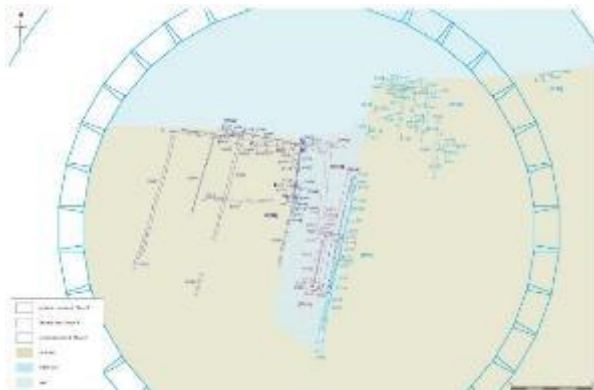




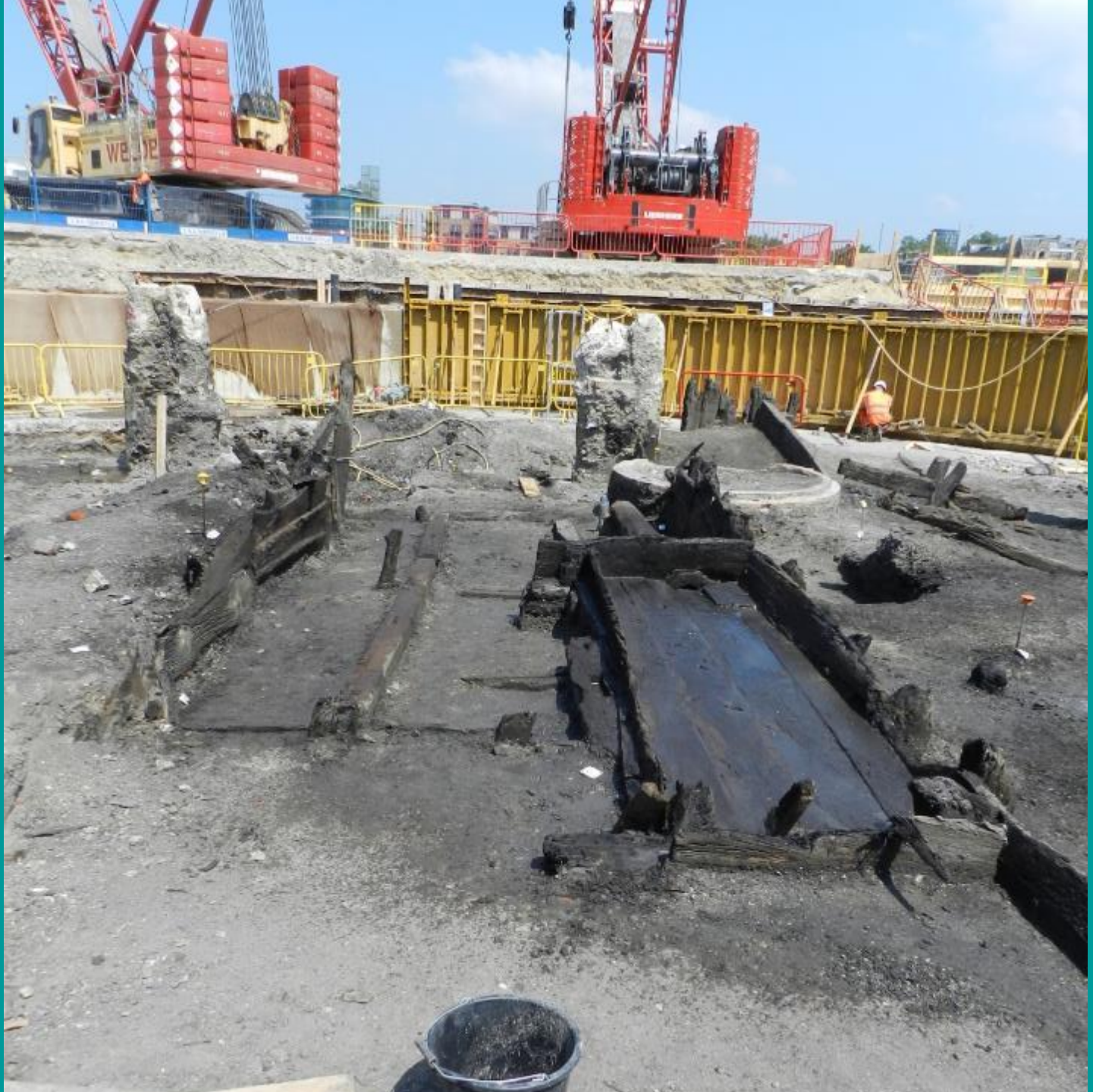


- Waterfronts have been assigned a provisional 17th century date.
- The revetments were similar to the 17th century structures recorded during the CSO shaft excavation - comprising vertical posts set into a horizontal sill beam with on edge plank sheathing attached to the riverward face.
- Many of the revetment components were reused from medium to large vessel timbers.
- Tree ring samples and specialist finds analysis will help to provide confirmation of the assumed date.
- Below the structures have been provisionally phased but this will be refined after specialist analysis

Chambers Wharf – 17th century quays











5126



Re-used ship rudder











Tel: 020 8981 2611

PLANT

hireexpress.com
981 2611



www.foothire.com
Tel: 020 8981 2611



Finds











500-Year-Old Skeleton Found in London (Thigh-High Boots and All)



Excavating a skeleton believed to date from 500 years ago at Chambers Wharf in southeast London in June. Mola Headland Infrastructure/EPA, via Shutterstock

By Palko Karasz

Dec. 5, 2018



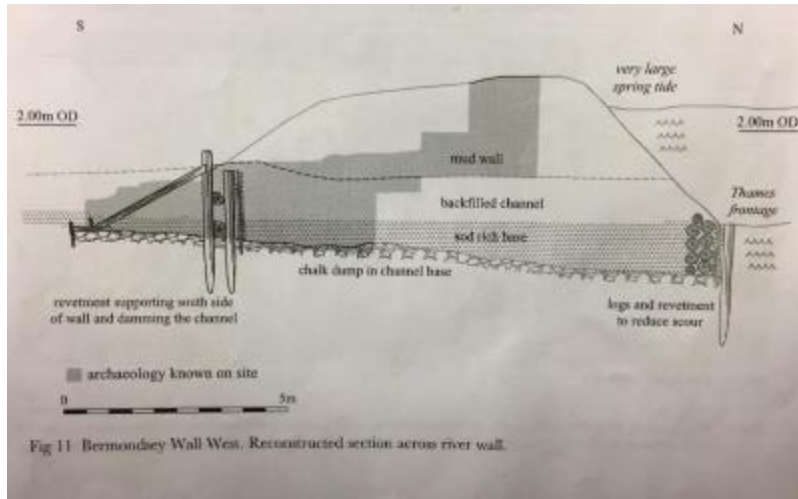
LONDON — Britons fishing or scavenging in the River Thames in central London are a rare sight these days.

But in medieval times, the river was teeming with workers toiling along its banks. The 500-year-old skeleton of a man believed to be among them has been found buried in layers of river mud in southeast London, offering

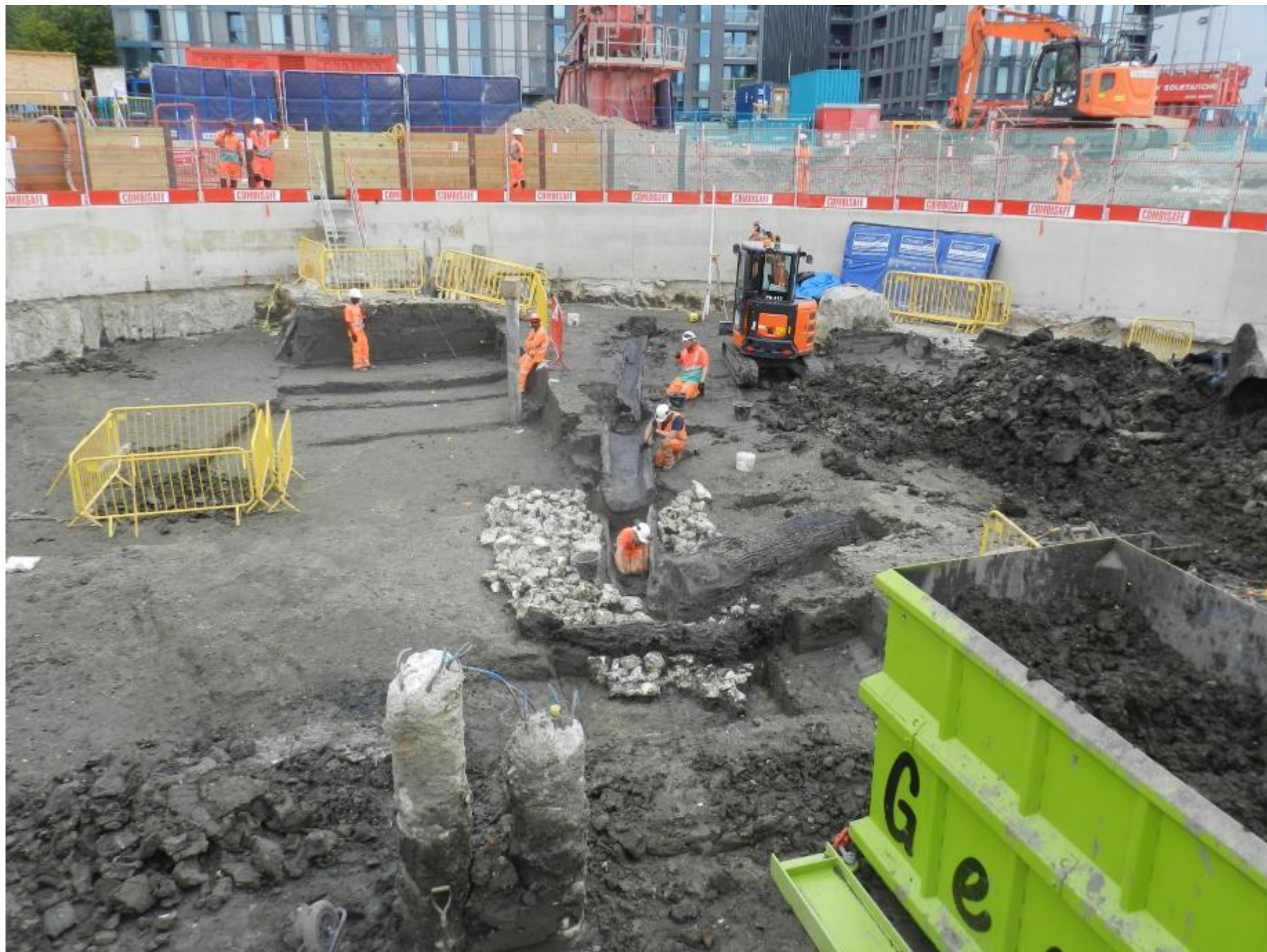




CHAMBERS WHARF Bermondsey wall and sluice















Further work



- Processing, analysis, and eventually publication of results



www.tideway.london
helpdesk@tideway.london

