

CARNWATH ROAD RIVERSIDE

Community Liaison Working Group – Drop in session

Tuesday 6 February 2024



Tideway



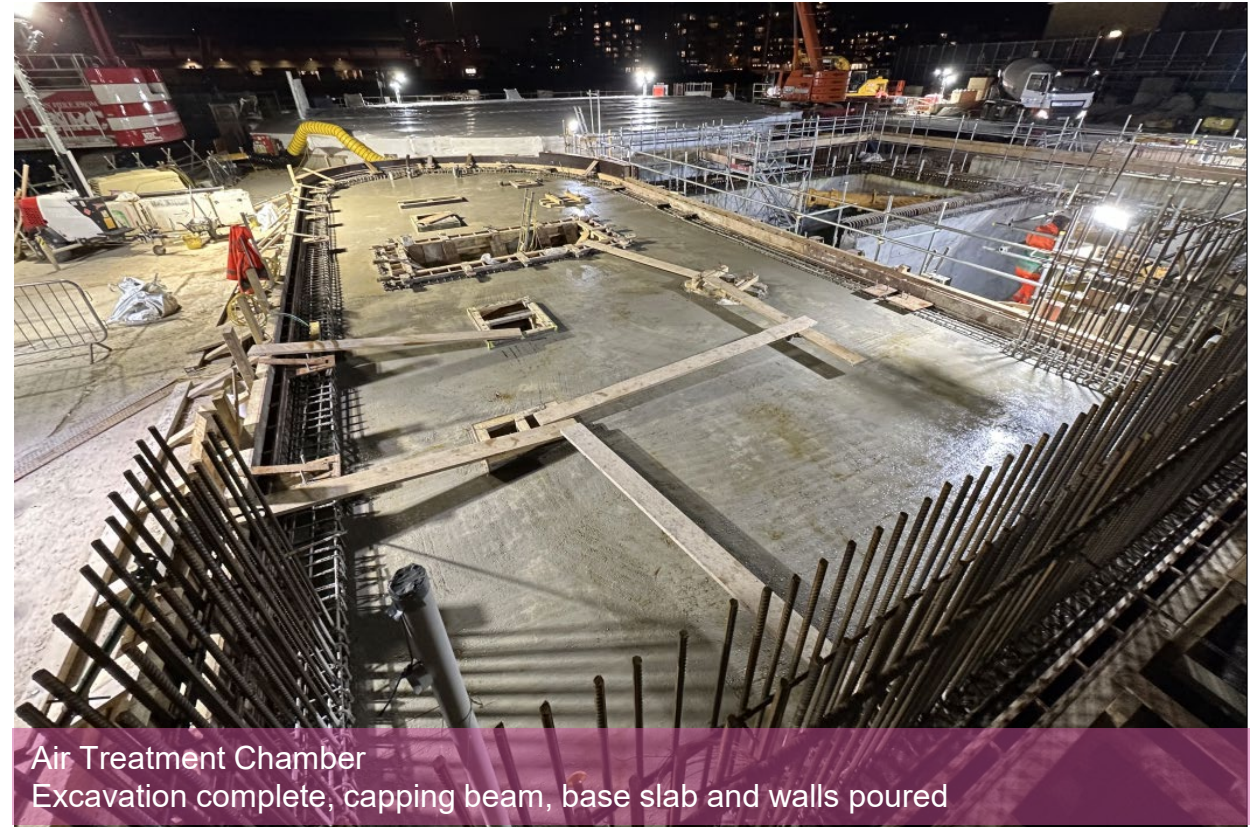


WELCOME

WORKS UPDATE

Amy Hogg, Construction Manager

Works Update: May 2023 – January 2024



Works Update: May 2023 – January 2024

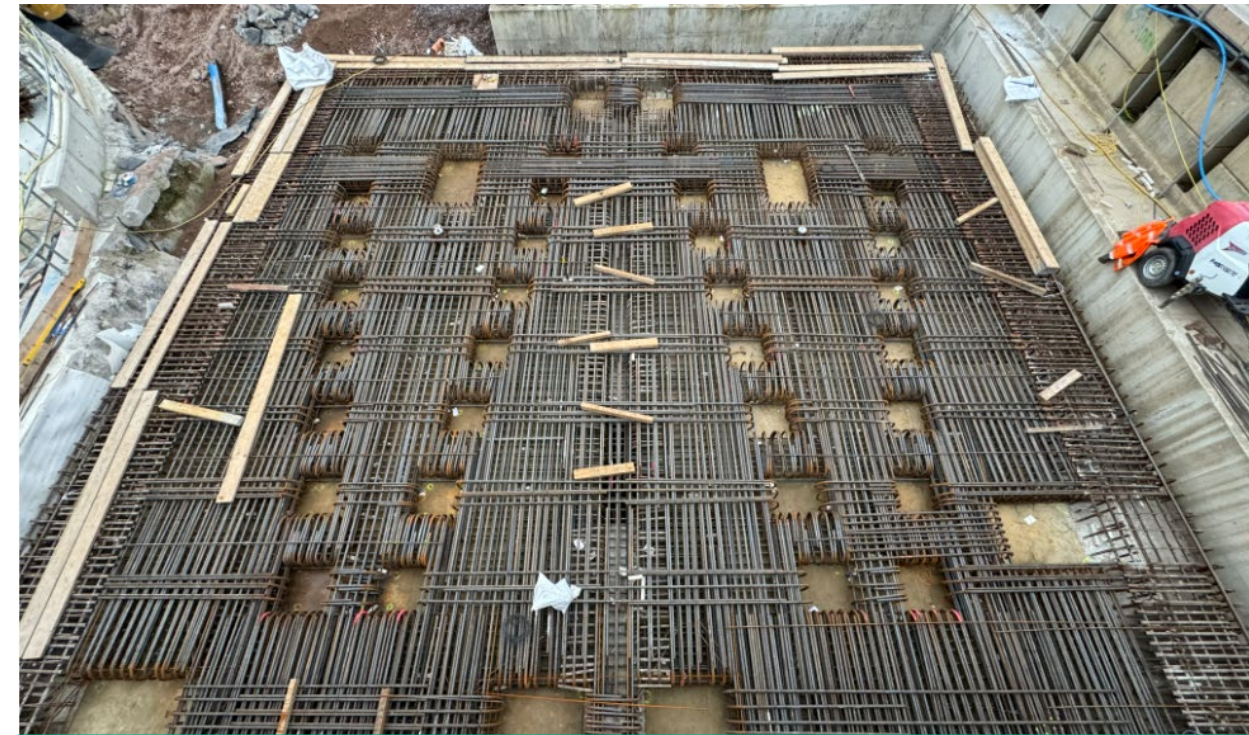


Shed Removal
Completed and capping beam removed



Mechanical and Electrical Kiosk
Steel frame installed and roof slab poured

Remaining Works: February 2024 onwards



Air Treatment Chamber
Pour roof slab and upstands



Mechanical and Electrical Kiosk
Install external cladding and doors and installation of brown roof

Remaining Works: February 2024 onwards



Note – Temporary Hoarding NOT Shown -

Preparation for Landscaping Works
Removal of hardstanding, sheet piles and temporary works



Note – Temporary Hoarding NOT Shown

Architectural and Landscaping Works
Hard and soft landscaping works

Current Programme

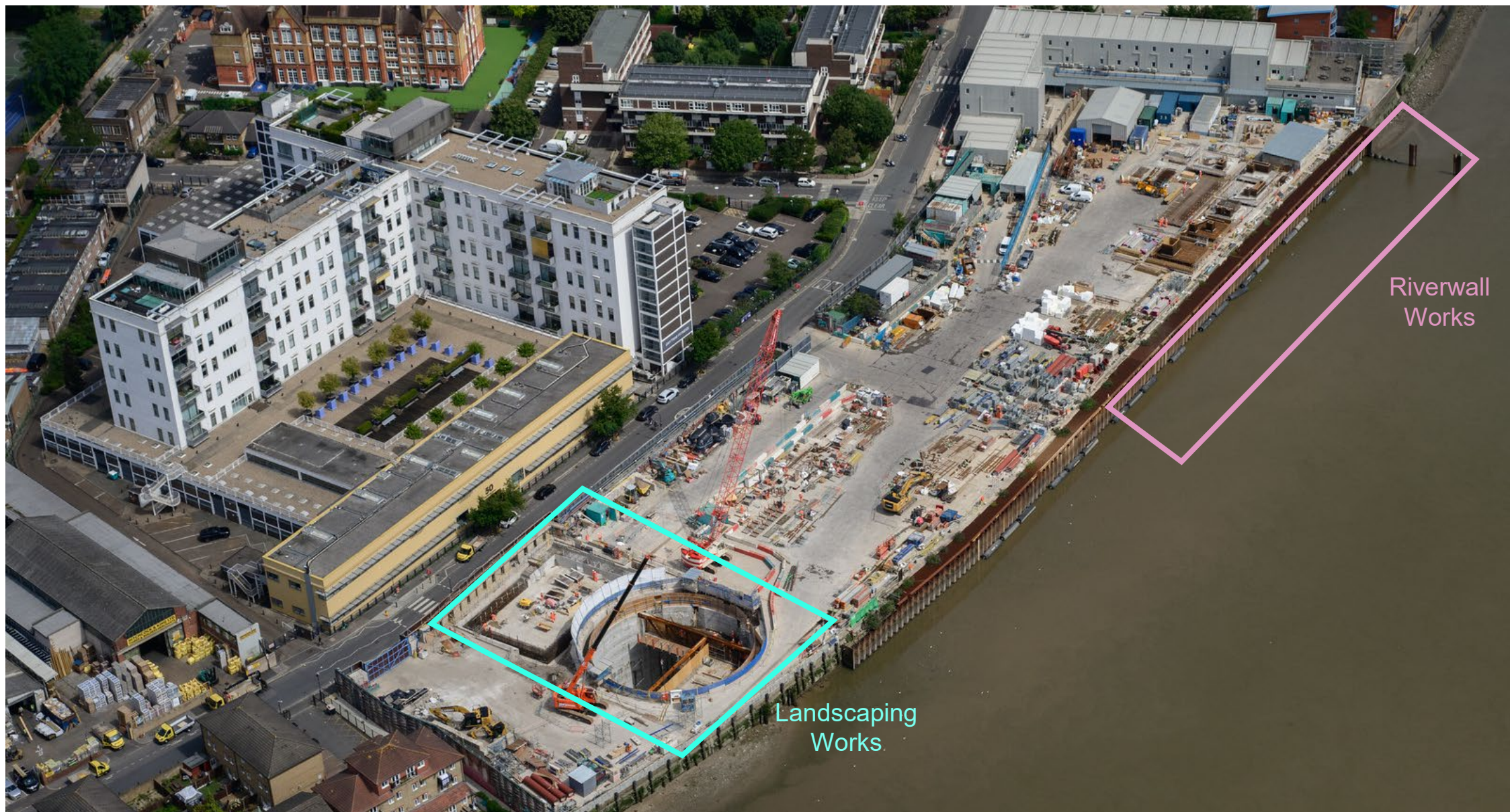
Key dates

- Surface civil works complete March 2024
 - Pour ATC roof slab and upstands
- Architectural and Landscaping works to commence end of February 2024
 - Site demobilisation works on-going in preparation for landscaping works
 - Installation of precast ventilation column
 - Hard and soft landscaping works
 - Installation of artwork

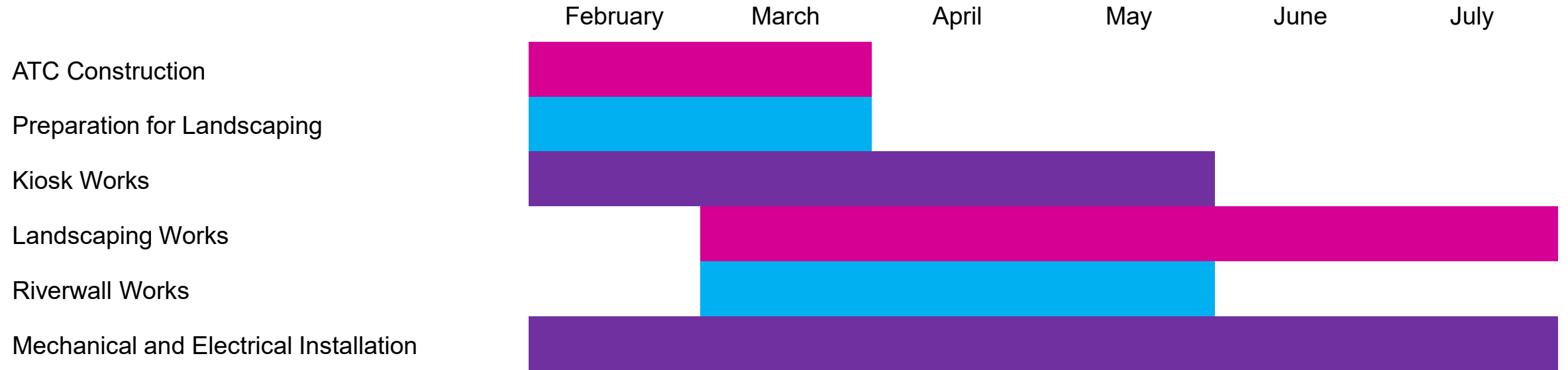
Key dates

- Riverwall works to commence February 2024
 - Dredging
 - Removal of sheet piles
 - Regrading of foreshore
- Mechanical and electrical works on-going
 - Installation of equipment and cabling works across site
- System testing and commissioning continues until 2025

Site Layout



Look Ahead (next 6 months)



Core working hours 8am-6pm Monday – Friday and 8am-1pm Saturday.
One hour start up and shut down periods either side of working hour.



COMMUNITY ENGAGEMENT

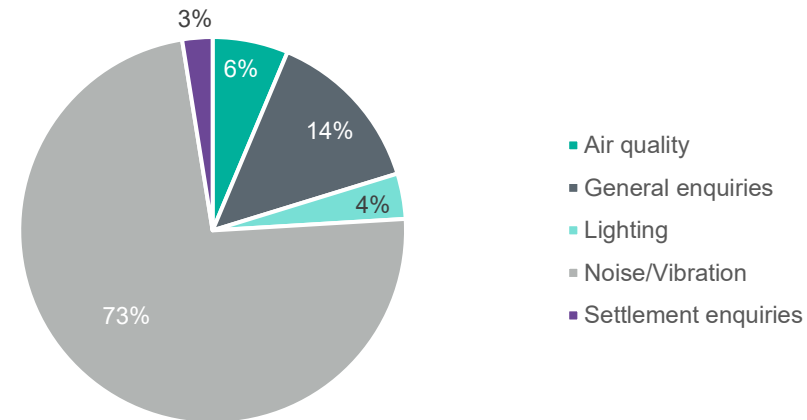
Anne-Marie Brannigan, Communications Manager

Complaints / Queries

Since the last meeting we have received the following:

79 Total

- 58 x noise & vibration complaints
- 11 x general enquiries
- 5 x air quality
- 3 x lighting
- 2 x settlement enquiries



Call: 08000 30 80 80

Email: helpdesk@tideway.london

Write to: Freepost TIDEWAY

How To Make A Claim if Affected By Tideway's Work

Who do I go to for advice?

Independent Advisory Service (IAS) Helpline for independent advice:

- 0800 917 8845 or info@tidewayias.co.uk
- For assistance and advice please contact the Tideway Helpdesk
 - Helpdesk: 08000 30 80 80 or
 - helpdesk@tideway.london

How do I submit my claim?

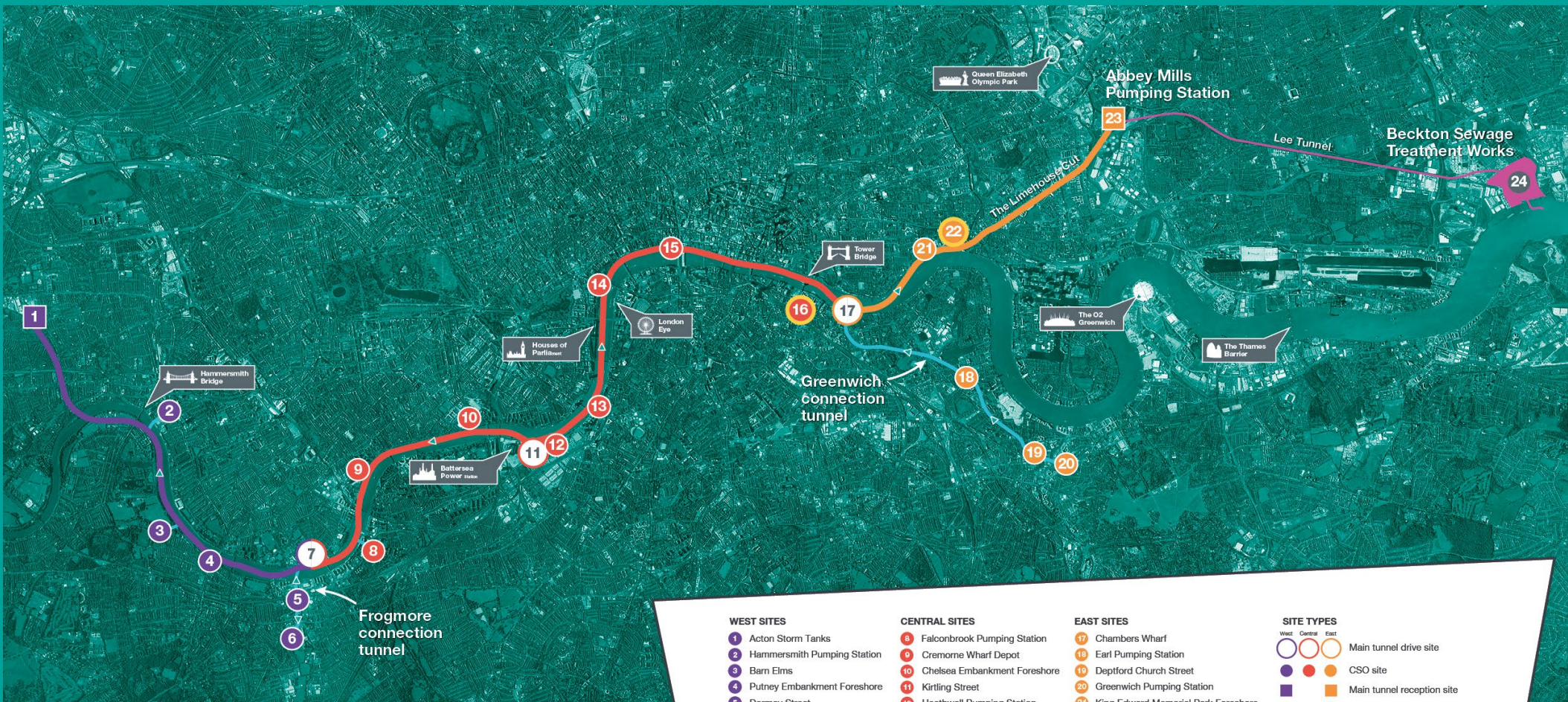
Please submit your claim direct to the ICP: admin@tidewayicp.london

The IAS can send you a claim form, or you can download the form off the Tideway website: www.tideway.london/help-advice/compensation-information/Independent-Compensation-Panel

TIDEWAY UPDATE

Georgia Boyd, Engagement Manager

Tideway Tunnel Overview



WEST SITES	CENTRAL SITES	EAST SITES	SITE TYPES
1 Acton Storm Tanks	8 Falconbrook Pumping Station	17 Chambers Wharf	West Central East Main tunnel drive site
2 Hammersmith Pumping Station	9 Cremorne Wharf Depot	18 Earl Pumping Station	CSO site
3 Barn Elms	10 Chelsea Embankment Foreshore	19 Deptford Church Street	Main tunnel reception site
4 Putney Embankment Foreshore	11 Kirtling Street	20 Greenwich Pumping Station	System modifications
5 Dormay Street	12 Heathwall Pumping Station	21 King Edward Memorial Park Foreshore	Main tunnel (West)
6 King George's Park	13 Albert Embankment Foreshore	22 Bekesbourne Street	Main tunnel (Central)
7 Carnwath Road Riverside	14 Victoria Embankment Foreshore	23 Abbey Mills Pumping Station	Main tunnel (East)
	15 Blackfriars Bridge Foreshore	24 Beckton Sewage Treatment Works	Connection tunnels
	16 Shad Thames Pumping Station		Lee Tunnel

Proposed drive direction

TIDEWAY ROUTE MAP

25
kilometres long

Travelling from west to east London, the main tunnel will be 25km long. Two connection tunnels will be 4.6km and 1.1km long.

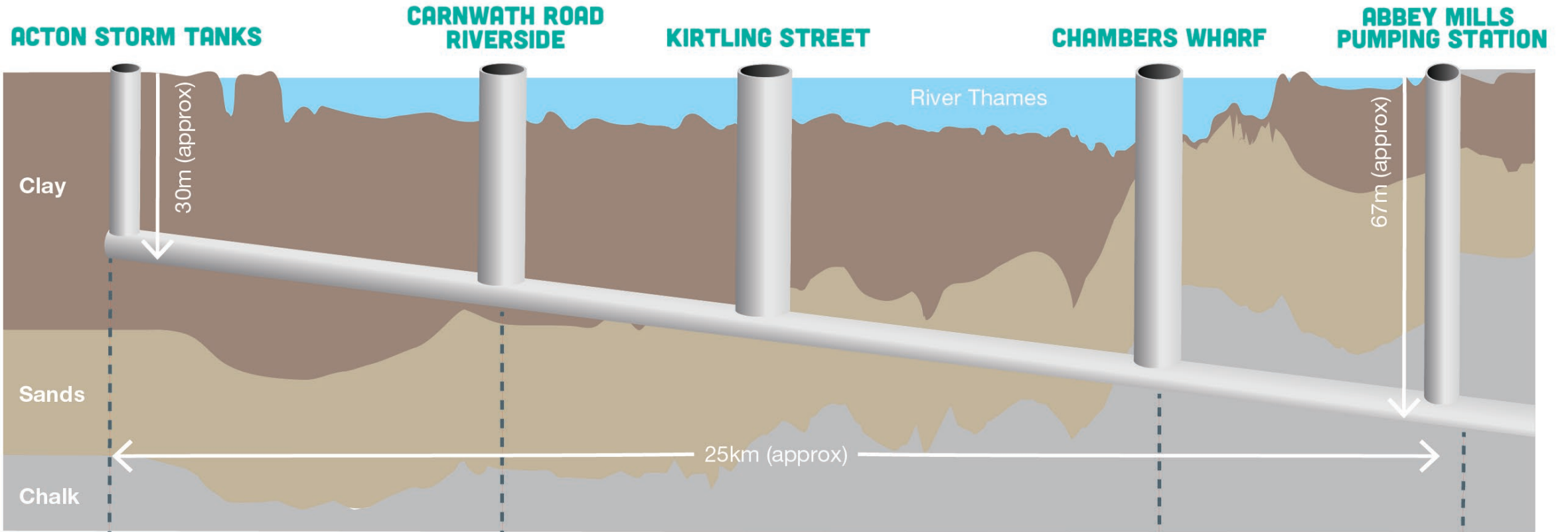
7.2
metres wide

The main tunnel will have an internal diameter of 6.5 metres between Acton Storm Tanks and Carnwath Road Riverside. It will have a 7.2 metre internal diameter at Abbey Mills Pumping Station. The Greenwich connection tunnel will have a 5 metre internal diameter and Frogmore connection tunnel will be 2.6 metres.

66
metres deep

The tunnel needs to fall one metre every 790 metres so it can be self-cleaning. Starting from 30 metres deep at Acton Storm Tanks, it will finish 66 metres deep at Abbey Mills Pumping Station.

Tunnelling through London



WEST

Tideway

bam nuttall | MORGAN SINDALL | Balfour Beatty

CENTRAL

Tideway

ferrovial agroman | LANG O'Rourke

EAST

Tideway

COSTAIN | VINCI CONSTRUCTION | GRANDS PROJETS | BACHY SOLETANCHE

System Integration: **amey**

Project Progress highlights

- Out of tunnels and shafts in the west and almost out of tunnels and shafts in the central section
- Architecture and landscape is well underway at most of our West and Central sites
- Carnwath Road shaft lid has been completed
- Cofferdam removal is complete at Victoria and is progressing at Chelsea, Albert, King Edward Memorial Park. Blackfriars due to recommence this month
- Acoustic shed removal underway at Greenwich and has started at Chambers Wharf



Highlights in West



Hammersmith Pumping Station
Artwork unveiling Sept 2023 by artist Sarah Stanton



Dormay Street
Artworks by the artist Yemi Awosile



Barn Elms
One of London's largest bug hotels



Putney Embankment Foreshore
New public space with artworks by Claire Barclay

Stay up to date

Follow us on our social media platforms:



[Twitter / X](#)



[Facebook](#)



[Instagram](#)



[LinkedIn](#)



[YouTube](#)



Tideway

RECONNECTING LONDON WITH THE RIVER THAMES

#SuperSewer

www.tideway.london