

INFORMATION SHEET



2024-TDWAY- KEMPF-150-ZZ-CO-700034
February 2024



GRANDS PROJETS



KING EDWARD MEMORIAL PARK FORESHORE - WORKS UPDATE

Further to last month's Community Liaison Working Group, we wanted to update you on progress for the removal of the cofferdam, the temporary area of land we built out into the river. As the cofferdam is removed, the new permanent river wall is gradually becoming more visible.

The cofferdam structure was split into cells, which we are removing one at a time. We began closest to Free Trade Wharf (top right in the diagram overleaf) and are now working in the blue cells, moving clockwise to excavate material, which is taken away by barge.

The concrete working platform, which formed the surface of the cofferdam, is being cut into sections, broken up and removed, to be reused as aggregate.

For the steel sheet pile extraction, we have a barge and crane moored adjacent to the site, as in the aerial photograph overleaf, taken last month. We are removing around a dozen piles (of 160 total) each week. In order to remove the sheet piles safely, we need to begin using vibration extraction equipment. We apologise for any inconvenience this may cause. The team will continue using appropriate noise mitigation such as noise blankets and monitor noise levels to stay within limits approved by the council. Work to remove the cofferdam will continue until August.

The shaft is now completely covered, with the team working on preparations for the planned architectural, landscaping and finishing works.

Once our works are complete, flows from the northeastern storm relief sewer that are currently discharged into the river will be diverted downwards into the Thames Tideway Tunnel.

The tunnel will begin to receive flows later this year and be fully operational in 2025.

KEY INFO

Normal working hours:

- Monday to Friday: 8am to 6pm
- Saturdays: 8am to 1pm
- Some barge movements outside of these hours due to tidal requirements

Activities include:

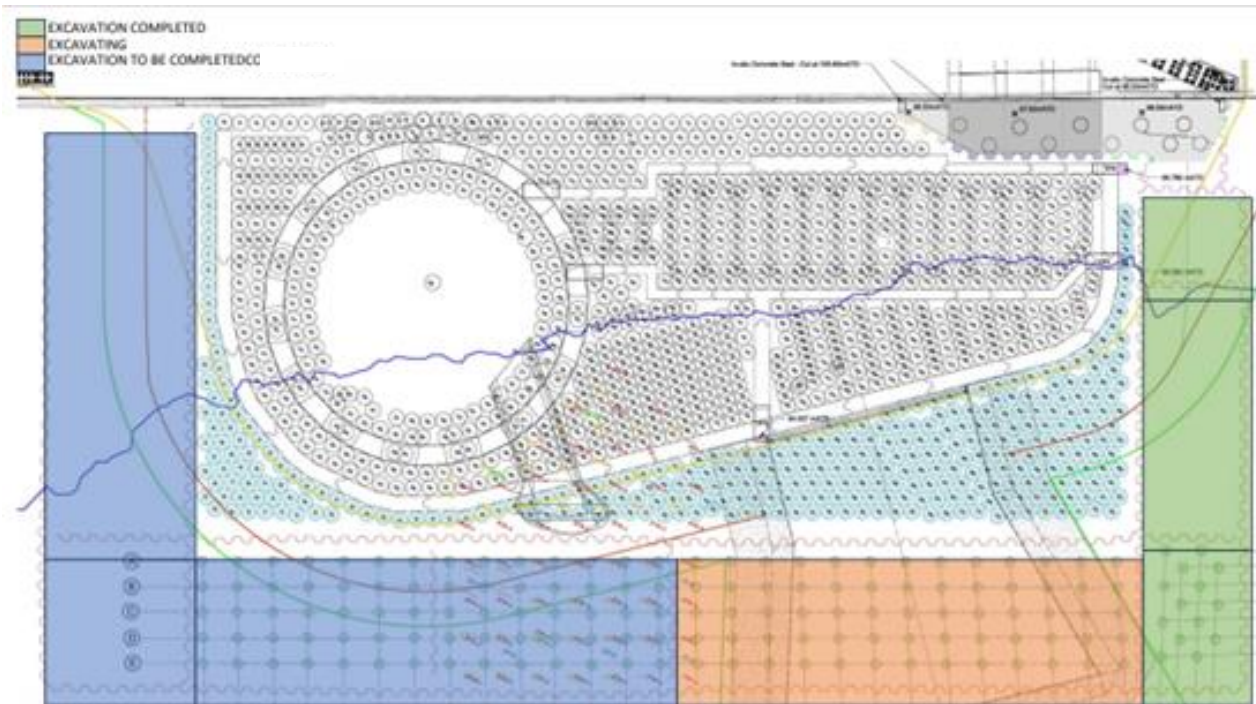
- Breaking out concrete slabs, excavation of material and removal of sheet piles

24 HOUR HELPDESK 08000 30 80 80

helpdesk@tideway.london | Freepost TIDEWAY
www.tideway.london



@TidewayLondon



If you feel affected by our work, please contact the Helpdesk, who can advise you on support available through the Independent Compensation Panel. Typical mitigation could include noise cancelling headphones or temporary respite.

If you would like to make an application to the Independent Compensation Panel (ICP), please contact the Helpdesk at helpdesk@tideway.london to request a copy of the application form.

We are happy to provide information in other languages and formats such as braille or large print. Please contact the Tideway Helpdesk on 08000 308080