

ACTON STORM TANKS

Community Liaison Working Group

Wednesday 6 March 2024



Tideway

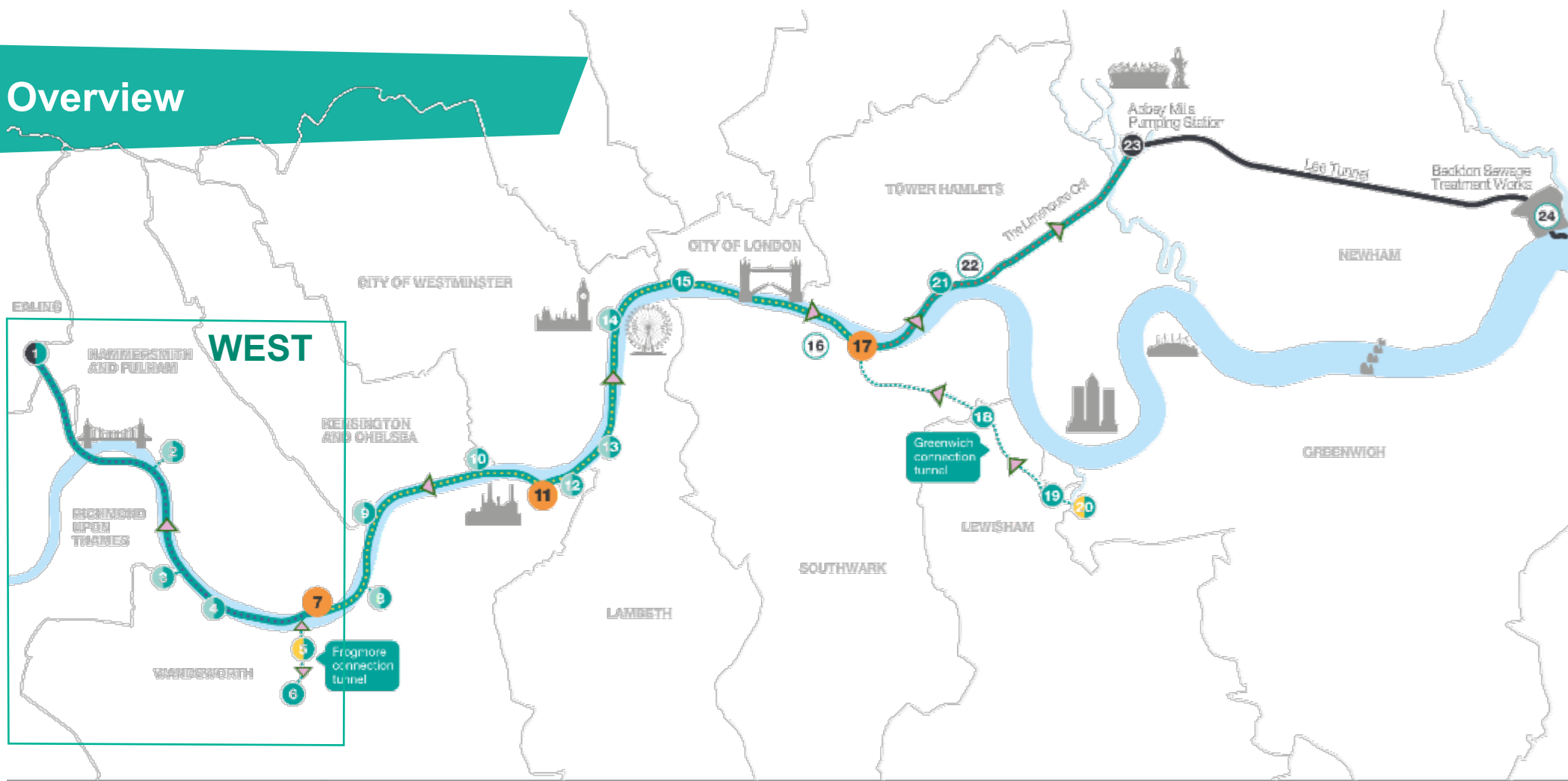




WELCOME

Will Thorpe, Section Manager

Tideway Overview



Map key

- Main tunnel drive tunnel site
- Main tunnel reception site
- CSO site
- Short connection tunnel drive site
- Long connection tunnel drive site
- System modifications

- Main tunnel
- - - - Connection Tunnels
- Lee Tunnel
- ◀ Proposed drive direction
- - - - West works site
- - - - Central works sites
- - - - East works site

- 1 Acton Storm Tanks
- 2 Hammersmith Pumping Station
- 3 Bam Elms
- 4 Putney Embankment Foreshore
- 5 Dormay Street
- 6 King George's Park
- 7 Carnwath Road Riverside
- 8 Falconbrook Pumping Station

- 9 Cremorne Wharf Depot
- 10 Chelsea Embankment Foreshore
- 11 Kirtling Street
- 12 Heathwall Pumping Station
- 13 Albert Embankment Foreshore
- 14 Victoria Embankment Foreshore
- 15 Blackfriars Bridge Foreshore
- 16 Shad Thames Pumping Station

- 17 Chambers Wharf
- 18 Earl Pumping Station
- 19 Deptford Church Street
- 20 Greenwich Pumping Station
- 21 King Edward Memorial Park Foreshore
- 22 Bekesbourne Street
- 23 Abbey Mills Pumping Station
- 24 Beckton Sewage Treatment Works

Acton Site 2017

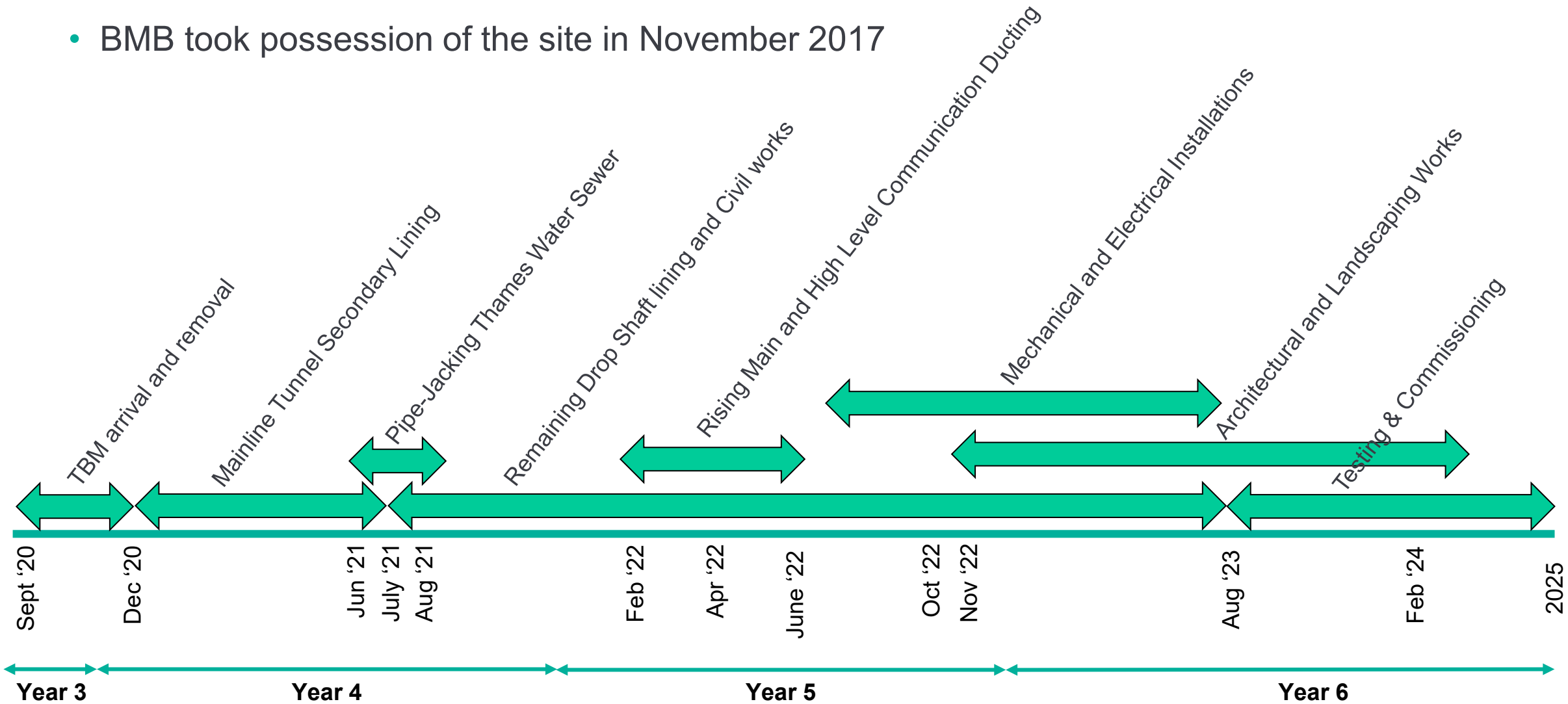


Acton Site 2024



Timeline

- BMB took possession of the site in November 2017



Completed Work

The following works have been completed:

- Shaft and Connection Tunnel
- Interception and Inlet Chamber
- Valve Chamber
- Air Treatment Chamber
- Attenuation Chamber
- Ventilation Ducting
- Draw Pits and Drainage
- Pressure Relief Structure
- Mechanical & Electrical Installation
- Ventilation Column
- Architectural and Landscaping Works

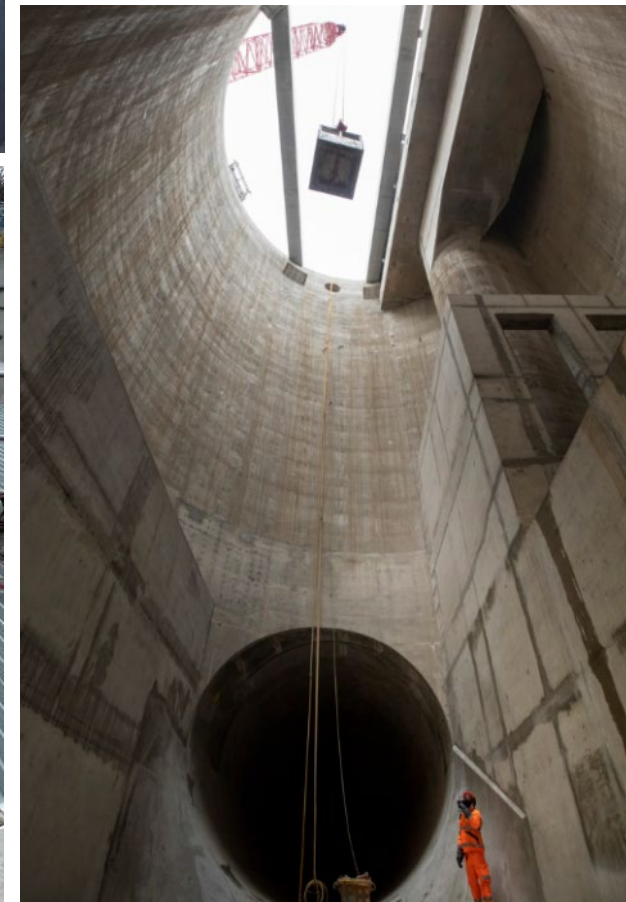
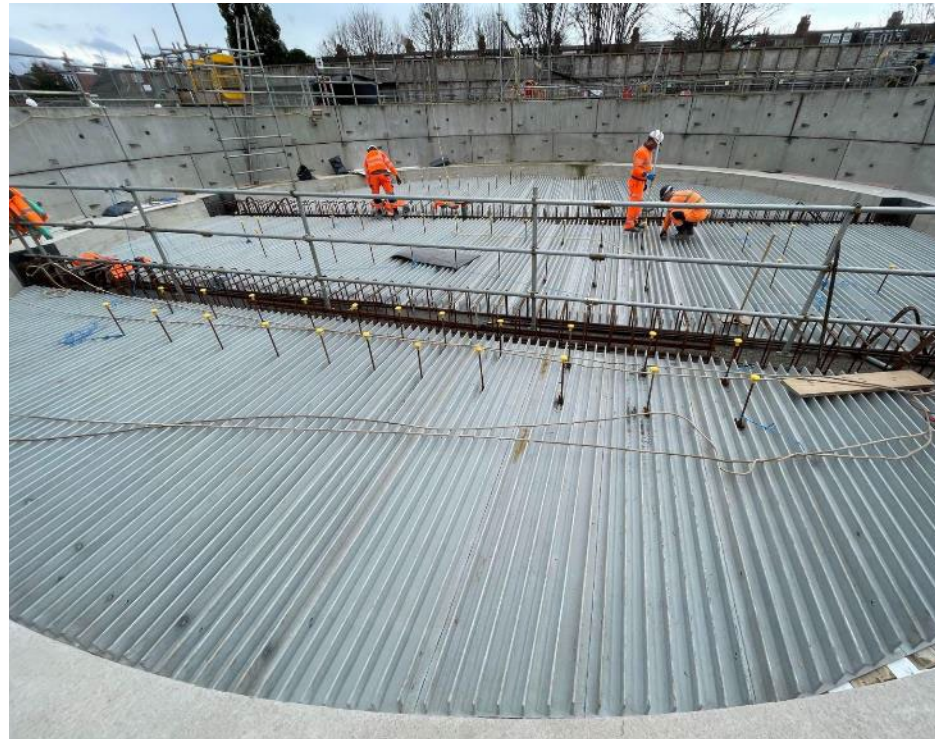
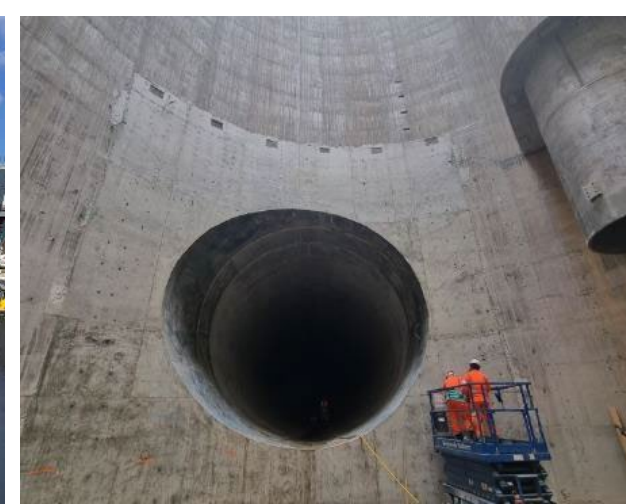
Work to be completed:

- Artwork Installation – March-April 2024
- Architecture and Landscaping – end of May 2024
- Snagging - including removal and reinstallation of the penstock - end of April 2024
- System Testing and Commissioning – May 24 – Summer 2025



Acton Storm Tanks – Shaft Progress

- Completed slipforming of the dropshaft and the tunnel portal
- Installed vortex generator and cast vortex bridge structure
- Completed shaft internal walls and benching
- Completed installation of the precast beams, installation of the GRP panels and casting the reinforced cover slab



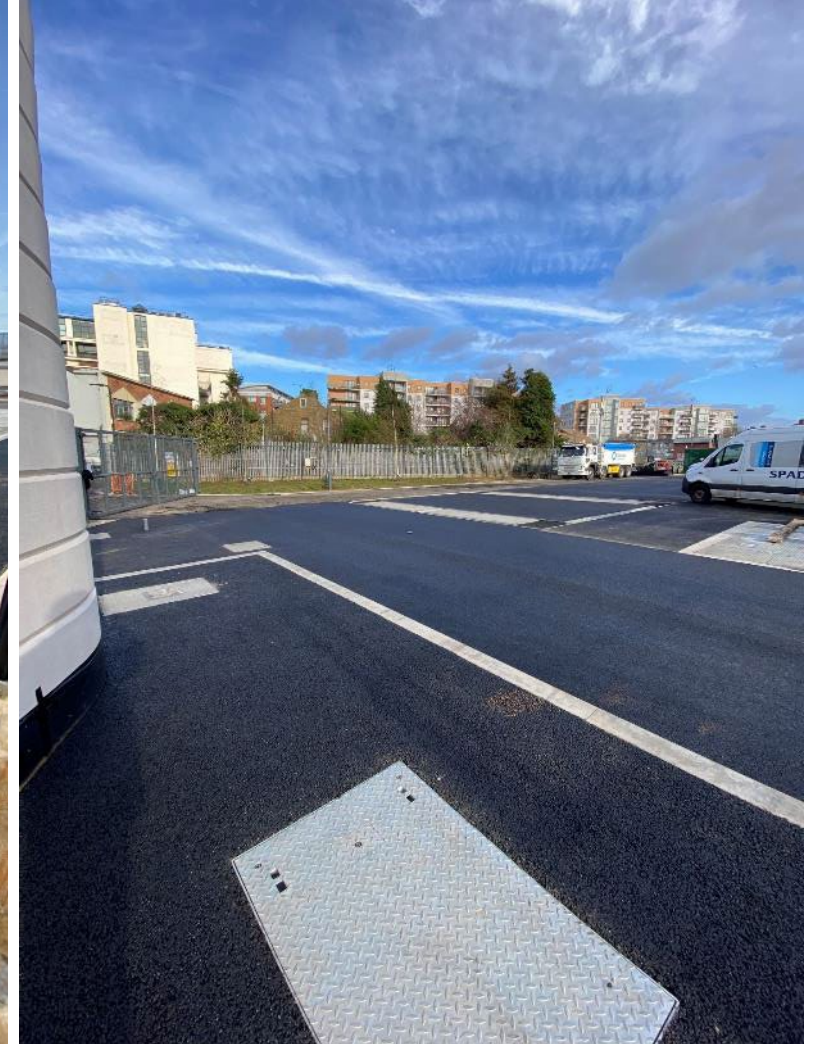
Acton Storm Tanks – Soft Landscaping

- Installation of the SUDS pond and swales – snagging works to be completed May '24
- Completed the main drainage installation for site.



Acton Storm Tanks – Hard Landscaping

- Completion of the asphaltting and concrete paving



Acton Storm Tanks – Site Fencing

- Completion of the site mesh and palisade permanent fencing



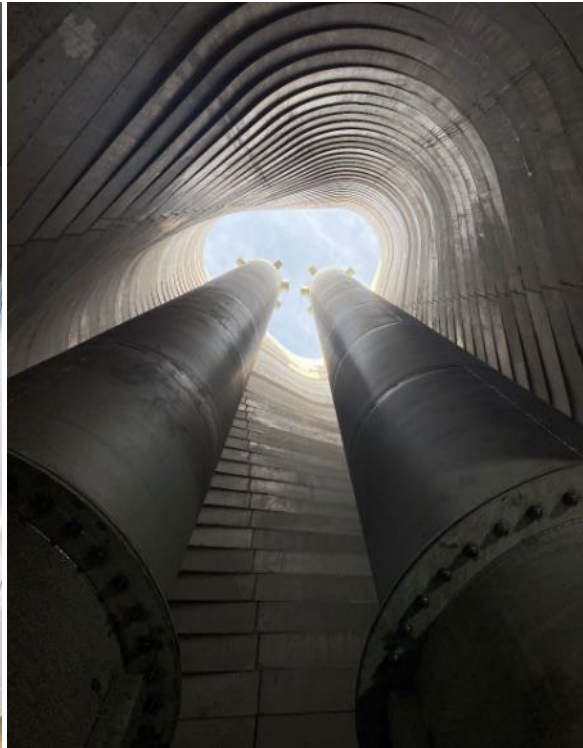
Acton Storm Tanks – Ventilation Column

- Completion of the ventilation column and installation of grille



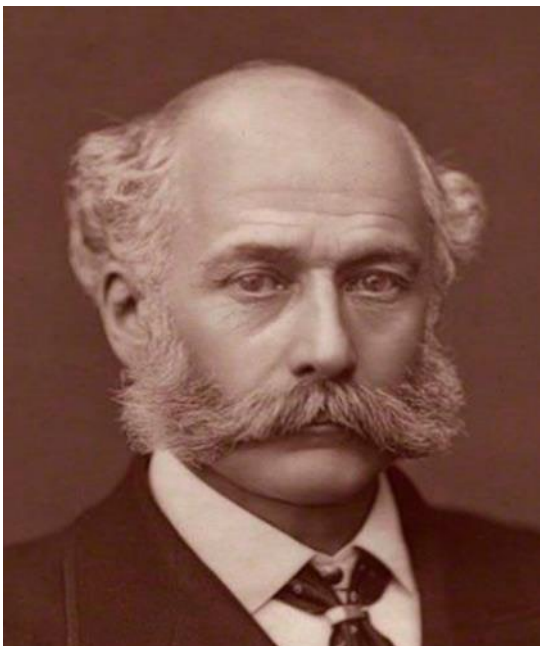
Acton Storm Tanks – MEICA Progress

- Installation of the fans
- Installation of the ventilation flues
- Installation of pressure relief and air inlet dampers
- Installation of air treatment units and attenuators



Acton Storm Tanks – Artwork

- Installation of the Artwork – March-April 2024





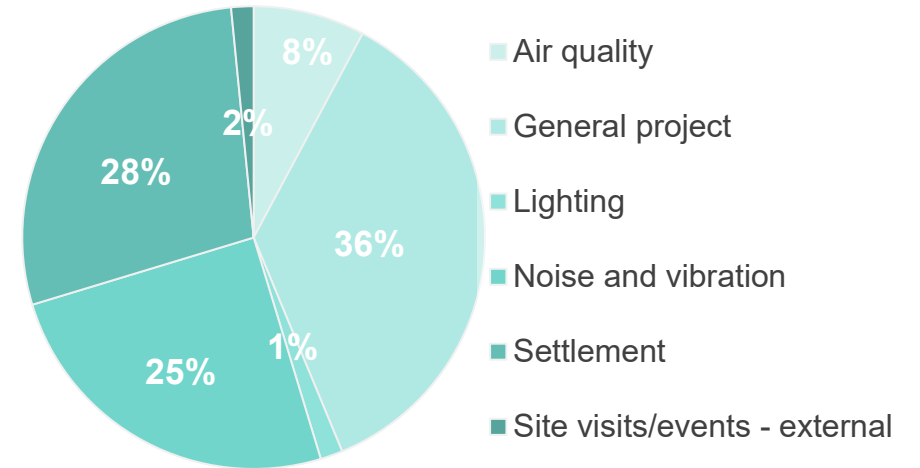
**COMMUNITY
ENGAGEMENT**

Enquiries

64 queries have been received:

- 5 x air quality
- 23 x general project
- 1 x lighting
- 16 x noise and vibration
- 18 x settlement
- 1 x site visits/events - external

TOTAL QUERIES - 64



All enquiries have been responded to within 24 hours (where possible) and if needed, in collaboration with Thames Water



Tideway

Call: 08000 30 80 80

Email: helpdesk@tideway.london

Write to: Freepost TIDEWAY



0800 316 9800

Available 24/7 to answer all enquiries & complaints related to the operations and maintenance of the site

Community Engagement

Our community support continues;

Recent local community engagement was the provision of an informative and interesting presentation on the Tideway project as a whole, this talk was given to the Acton History Group with a specific focus on the Acton Storm Tanks site.

Please contact us if you are aware of an opportunity or community group that we could possibly help.



How to make a claim if affected by Tideway's work

Who do I go to for help and advice?

- For personal assistance and advice contact our Helpdesk: 08000 30 80 80 / helpdesk@tideway.london
- For independent advice contact the Independent Advisory Service (IAS) Helpline 0800 917 8845 or info@tidewayias.co.uk

How do I submit my claim?

You can submit your claim direct to the ICP: admin@tidewayicp.london

You can download the form off the Tideway website: www.tideway.london/help-advice/compensation-information/Independent-Compensation-Panel

Stay up to date

Follow us on our social media platforms:



[Twitter / X](#)



[Facebook](#)



[Instagram](#)



[LinkedIn](#)



[YouTube](#)



Tideway

RECONNECTING LONDON WITH THE RIVER THAMES

#SuperSewer

www.tideway.london