

THE THAMES WATER UTILITIES LIMITED (THAMES TIDEWAY TUNNEL) ORDER 2014 (AS AMENDED)¹ SI 2014 NO.2384

GENERAL VESTING DECLARATION No. 5

This GENERAL VESTING DECLARATION NO. 5 is made the 31 day of January 2024 by Thames Water Utilities Limited ("Thames Water").

WHEREAS:

- 1 On 3 September 2014 an order entitled The Thames Water Utilities Limited (Thames Tideway Tunnel) Order 2014 (as amended) SI 2014 No.2384 ("the Order") was made (and came into force on 24 September 2014) by the Secretaries of State for Communities and Local Government and Environment, Food and Rural Affairs under the powers conferred on them by the Planning Act 2008 authorising Thames Water to acquire the land specified in the Schedule hereto.
- 2 Notice of the making/confirmation of the Order was first published in accordance with section 134 of the Planning Act 2008 on 19 September 2014.
- 3 Preliminary notice of the intention to make a general vesting declaration in respect of any of the land described in the Schedule hereto was first published on **19 July 2023** in accordance with section 3 of the Compulsory Purchase (Vesting Declarations) Act 1981 ("the 1981 Act")², as modified by Article 34 of the Order.
- 4 That preliminary notice included the particulars specified in section 3(3) of the 1981 Act, as modified by Article 34 of the Order.
- 5 The notice referred to in (4) above specified the period of two months beginning with the date of its first publication as the period before the end of which this general vesting declaration could not be executed.

NOW THIS DEED WITNESSETH that, in exercise of the powers conferred on them by the Order and section 4 of the 1981 Act, Thames Water hereby declare:

The land described in the Schedule hereto being part of the land authorised to be acquired by the Order and more particularly delineated on the plans annexed hereto, together with the right to enter upon and take possession of the land shall vest in the Thames Water as from the end of the period of 28 days from the date on which the service of notices required by section 6 of the 1981 Act and in accordance with Article 34 of the Order is completed.

¹ The Order has been amended by (1) SI 2015/723 issued on 17 March 2015; (2) SI 2017/659 issued on 16 May 2017; (3) SI 2018/1262 issued 29 November 2018; (4) Notices of Variation Nos.1 and 2 Issued on 17 March 2015 and 17 August 2017 respectively in respect of the Deemed Marine Licence; (5) SI 2020/268 issued on 10 March 2020; and (6) SI 2020/862 issued on 13 August 2020.

² The Version of the 1981 Act is the version that applied immediately prior to amendments brought in by the Housing and Planning Bill on 13 October 2015 and as modified by the Order.

SCHEDULE

The land

<u>Reference number on attached notice plan</u>	<u>Description of the land</u>	<u>Associated Book of Reference plot number</u>	<u>Title Number</u>
ACTST/2009	442.5 square metres of a stratum of subsoil below grassed area (Acton Sewage Pumping Station) where the upper surface of the stratum of the sub-soil is at a level equivalent to -12.6m (minus Twelve Point Six metres) OD (Ordnance Datum) or thereabout at its western boundary and -12.8m (minus Twelve Point Eight metres) OD (Ordnance Datum) or thereabouts at its eastern boundary, and the lower surface of the stratum of the sub-soil is at a level equivalent to -31.1m (minus Thirty One Point One metres) OD (Ordnance Datum) or thereabout at its western boundary and -31.3m (minus Thirty One Point Three metres) OD (Ordnance Datum) or thereabouts at its eastern boundary.	25 - London Borough of Ealing	AGL201621
ACTST/2011	777.9 square metres of a stratum of subsoil below tanks and hardstanding (Acton Sewage Pumping Station) where the upper surface of the stratum of the sub-soil is at a level equivalent to -12.5m (minus Twelve Point Five metres) OD (Ordnance Datum) or thereabout at its western boundary and -12.5m (minus Twelve Point Five metres) OD (Ordnance Datum) or thereabouts at its eastern boundary, and the lower surface of the stratum of the sub-soil is at a level equivalent to -31m (minus Thirty One metres) OD (Ordnance Datum) or thereabout at its western boundary and -31m (minus Thirty One metres) OD (Ordnance Datum) or thereabouts at its eastern boundary.	6 - London Borough of Ealing	AGL201621
ACTST/2019	182.8 square metres of a stratum of subsoil below car park (off Warple Way) where the upper surface of the stratum of the sub-soil is at a level equivalent to -12.8m (minus Twelve Point Eight metres) OD (Ordnance Datum) or thereabout at its western boundary and -12.8m (minus Twelve Point Eight metres) OD (Ordnance Datum) or thereabouts at its eastern boundary, and the lower surface of the stratum of the sub-soil is at a level equivalent to -31.3m (minus Thirty One Point Three metres) OD (Ordnance Datum) or thereabout at its western boundary and -31.3m (minus Thirty One Point Three metres) OD (Ordnance Datum) or thereabouts at its eastern boundary.	38 - London Borough of Ealing	AGL89142, NGL608750, AGL147280
ACTST/2020	45.2 square metres of a stratum of subsoil below access road, footway and land (off Warple Way) where the upper surface of the stratum of the sub-soil is at a level equivalent to -12.8m (minus Twelve Point Eight metres) OD (Ordnance Datum) or thereabout at its western boundary and -12.8m (minus Twelve Point Eight metres) OD (Ordnance Datum) or thereabouts at its eastern boundary, and the lower surface of the stratum of the sub-soil is at a level equivalent to -31.3m (minus Thirty One Point Three metres) OD (Ordnance Datum) or thereabout at its western boundary and -31.3m (minus Thirty One Point Three metres) OD (Ordnance Datum) or thereabouts at its eastern boundary.	37 - London Borough of Ealing	NGL403417, NGL608750, AGL147280
ACTST/2039	5.5 square metres of a stratum of subsoil below hardstanding (Acton Sewage Pumping Station) where the upper surface of the stratum of the sub-soil is at a level equivalent to -12.8m (minus Twelve Point Eight metres) OD (Ordnance Datum) or thereabout at its western boundary and -12.8m (minus Twelve Point Eight metres) OD (Ordnance Datum) or thereabouts at its eastern boundary, and the lower surface of the stratum of the sub-soil is at a level equivalent to -31.3m (minus Thirty One Point Three metres) OD (Ordnance Datum) or thereabout at its western boundary and -31.3m (minus Thirty One Point Three metres) OD (Ordnance Datum) or thereabouts at its eastern boundary.	33 - London Borough of Ealing	AGL201621

MNTLA/2002	3041 square metres of a stratum of subsoil below tanks, hardstanding, access and grassed area (Acton Sewage Pumping Station) where the upper surface of the stratum of the sub-soil is at a level equivalent to -12.5m (minus Twelve Point Five metres) OD (Ordnance Datum) or thereabout at its western boundary and -12.8m (minus Twelve Point Eight metres) OD (Ordnance Datum) or thereabouts at its eastern boundary, and the lower surface of the stratum of the sub-soil is at a level equivalent to -31m (minus Thirty One metres) OD (Ordnance Datum) or thereabout at its western boundary and -31.3m (minus Thirty One Point Three metres) OD (Ordnance Datum) or thereabouts at its eastern boundary.	20 - London Borough of Ealing	AGL201621
MNTLA/2004	76 square metres of a stratum of subsoil below grassed area and car park (off Warple Way) where the upper surface of the stratum of the sub-soil is at a level equivalent to -12.7m (minus Twelve Point Seven metres) OD (Ordnance Datum) or thereabout at its western boundary and -12.8m (minus Twelve Point Eight metres) OD (Ordnance Datum) or thereabouts at its eastern boundary, and the lower surface of the stratum of the sub-soil is at a level equivalent to -31.2m (minus Thirty One Point Two metres) OD (Ordnance Datum) or thereabout at its western boundary and -31.3m (minus Thirty One Point Three metres) OD (Ordnance Datum) or thereabouts at its eastern boundary.	26 - London Borough of Ealing	AGL89142, NGL608750, AGL147280
MNTLA/2005	25.8 square metres of a stratum of subsoil below grassed area and car park (off Warple Way) where the upper surface of the stratum of the sub-soil is at a level equivalent to -12.7m (minus Twelve Point Seven metres) OD (Ordnance Datum) or thereabout at its western boundary and -12.8m (minus Twelve Point Eight metres) OD (Ordnance Datum) or thereabouts at its eastern boundary, and the lower surface of the stratum of the sub-soil is at a level equivalent to -31.2m (minus Thirty One Point Two metres) OD (Ordnance Datum) or thereabout at its western boundary and -31.3m (minus Thirty One Point Three metres) OD (Ordnance Datum) or thereabouts at its eastern boundary.	27 - London Borough of Ealing	AGL89142, NGL608750, AGL147280
MNTLA/2007	45.5 square metres of a stratum of subsoil below grassed area and car park (off Warple Way) where the upper surface of the stratum of the sub-soil is at a level equivalent to -12.8m (minus Twelve Point Eight metres) OD (Ordnance Datum) or thereabout at its western boundary and -12.8m (minus Twelve Point Eight metres) OD (Ordnance Datum) or thereabouts at its eastern boundary, and the lower surface of the stratum of the sub-soil is at a level equivalent to -31.3m (minus Thirty One Point Three metres) OD (Ordnance Datum) or thereabout at its western boundary and -31.3m (minus Thirty One Point Three metres) OD (Ordnance Datum) or thereabouts at its eastern boundary.	26 - London Borough of Ealing	AGL89142, NGL608750, AGL147280
MNTLA/2010	71.4 square metres of a stratum of subsoil below access road, footway and land (off Warple Way) where the upper surface of the stratum of the sub-soil is at a level equivalent to -12.8m (minus Twelve Point Eight metres) OD (Ordnance Datum) or thereabout at its western boundary and -12.8m (minus Twelve Point Eight metres) OD (Ordnance Datum) or thereabouts at its eastern boundary, and the lower surface of the stratum of the sub-soil is at a level equivalent to -31.3m (minus Thirty One Point Three metres) OD (Ordnance Datum) or thereabout at its western boundary and -31.3m (minus Thirty One Point Three metres) OD (Ordnance Datum) or thereabouts at its eastern boundary.	36 - London Borough of Ealing	NGL403417, NGL608750, AGL147280
MNTLA/2011	20.1 square metres of a stratum of subsoil below access road (off Warple Way) where the upper surface of the stratum of the sub-soil is at a level equivalent to -12.8m (minus Twelve Point Eight metres) OD (Ordnance Datum) or thereabout at its western boundary and -12.8m (minus Twelve Point Eight metres) OD (Ordnance Datum) or thereabouts at its eastern boundary, and the lower surface of the stratum of the sub-soil is at a level	34 - London Borough of Ealing	NGL403417, NGL608750, AGL147280

	equivalent to -31.3m (minus Thirty One Point Three metres) OD (Ordnance Datum) or thereabout at its western boundary and -31.3m (minus Thirty One Point Three metres) OD (Ordnance Datum) or thereabouts at its eastern boundary.		
MNTLA/2012	3.4 square metres of a stratum of subsoil below public footway (Warple Way) where the upper surface of the stratum of the sub-soil is at a level equivalent to -12.8m (minus Twelve Point Eight metres) OD (Ordnance Datum) or thereabout at its western boundary and -12.8m (minus Twelve Point Eight metres) OD (Ordnance Datum) or thereabouts at its eastern boundary, and the lower surface of the stratum of the sub-soil is at a level equivalent to -31.3m (minus Thirty One Point Three metres) OD (Ordnance Datum) or thereabout at its western boundary and -31.3m (minus Thirty One Point Three metres) OD (Ordnance Datum) or thereabouts at its eastern boundary.	39 - London Borough of Ealing	NGL403417, NGL608750, AGL147280
MNTLA/2013	101.3 square metres of a stratum of subsoil below grassed area and car park hardstanding (off Warple Way) where the upper surface of the stratum of the sub-soil is at a level equivalent to -12.8m (minus Twelve Point Eight metres) OD (Ordnance Datum) or thereabout at its western boundary and -12.8m (minus Twelve Point Eight metres) OD (Ordnance Datum) or thereabouts at its eastern boundary, and the lower surface of the stratum of the sub-soil is at a level equivalent to -31.3m (minus Thirty One Point Three metres) OD (Ordnance Datum) or thereabout at its western boundary and -31.3m (minus Thirty One Point Three metres) OD (Ordnance Datum) or thereabouts at its eastern boundary.	27 - London Borough of Ealing	NGL403417, NGL608750, AGL147280
MNTLA/2014	52 square metres of a stratum of subsoil below public footway (Warple Way) where the upper surface of the stratum of the sub-soil is at a level equivalent to -12.8m (minus Twelve Point Eight metres) OD (Ordnance Datum) or thereabout at its western boundary and -12.9m (minus Twelve Point Nine metres) OD (Ordnance Datum) or thereabouts at its eastern boundary, and the lower surface of the stratum of the sub-soil is at a level equivalent to -31.3m (minus Thirty One Point Three metres) OD (Ordnance Datum) or thereabout at its western boundary and -31.4m (minus Thirty One Point Four metres) OD (Ordnance Datum) or thereabouts at its eastern boundary.	40 - London Borough of Ealing	NGL403417, NGL608750, AGL147280
MNTLA/2015	18.1 square metres of a stratum of subsoil below access road (off Warple Way) where the upper surface of the stratum of the sub-soil is at a level equivalent to -12.8m (minus Twelve Point Eight metres) OD (Ordnance Datum) or thereabout at its western boundary and -12.8m (minus Twelve Point Eight metres) OD (Ordnance Datum) or thereabouts at its eastern boundary, and the lower surface of the stratum of the sub-soil is at a level equivalent to -31.3m (minus Thirty One Point Three metres) OD (Ordnance Datum) or thereabout at its western boundary and -31.3m (minus Thirty One Point Three metres) OD (Ordnance Datum) or thereabouts at its eastern boundary.	35a - London Borough of Ealing	Unregistered
MNTLA/2016	39.5 square metres of a stratum of subsoil below public footway (Warple Way) where the upper surface of the stratum of the sub-soil is at a level equivalent to -12.8m (minus Twelve Point Eight metres) OD (Ordnance Datum) or thereabout at its western boundary and -12.8m (minus Twelve Point Eight metres) OD (Ordnance Datum) or thereabouts at its eastern boundary, and the lower surface of the stratum of the sub-soil is at a level equivalent to -31.3m (minus Thirty One Point Three metres) OD (Ordnance Datum) or thereabout at its western boundary and -31.3m (minus Thirty One Point Three metres) OD (Ordnance Datum) or thereabouts at its eastern boundary.	35 - London Borough of Ealing	Unregistered

MNTLA/2017	41.5 square metres of a stratum of subsoil below gardens and access (Emlyn Gardens) where the upper surface of the stratum of the sub-soil is at a level equivalent to -12.8m (minus Twelve Point Eight metres) OD (Ordnance Datum) or thereabout at its western boundary and -12.9m (minus Twelve Point Nine metres) OD (Ordnance Datum) or thereabouts at its eastern boundary, and the lower surface of the stratum of the sub-soil is at a level equivalent to -31.3m (minus Thirty One Point Three metres) OD (Ordnance Datum) or thereabout at its western boundary and -31.4m (minus Thirty One Point Four metres) OD (Ordnance Datum) or thereabouts at its eastern boundary.	41 - London Borough of Ealing	AGL89142, NGL608750, AGL147280
MNTLA/2018	6 square metres of a stratum of subsoil below footway (Warple Way) where the upper surface of the stratum of the sub-soil is at a level equivalent to -12.9m (minus Twelve Point Nine metres) OD (Ordnance Datum) or thereabout at its western boundary and -12.9m (minus Twelve Point Nine metres) OD (Ordnance Datum) or thereabouts at its eastern boundary, and the lower surface of the stratum of the sub-soil is at a level equivalent to -31.4m (minus Thirty One Point Four metres) OD (Ordnance Datum) or thereabout at its western boundary and -31.4m (minus Thirty One Point Four metres) OD (Ordnance Datum) or thereabouts at its eastern boundary.	43 - London Borough of Ealing	AGL89142
MNTLA/2019	27.3 square metres of a stratum of subsoil below gardens and access (Emlyn Gardens) where the upper surface of the stratum of the sub-soil is at a level equivalent to -12.8m (minus Twelve Point Eight metres) OD (Ordnance Datum) or thereabout at its western boundary and -12.9m (minus Twelve Point Nine metres) OD (Ordnance Datum) or thereabouts at its eastern boundary, and the lower surface of the stratum of the sub-soil is at a level equivalent to -31.3m (minus Thirty One Point Three metres) OD (Ordnance Datum) or thereabout at its western boundary and -31.4m (minus Thirty One Point Four metres) OD (Ordnance Datum) or thereabouts at its eastern boundary.	42 - London Borough of Ealing	NGL271630
MNTLA/2020	26.4 square metres of a stratum of subsoil below public footway (Warple Way) where the upper surface of the stratum of the sub-soil is at a level equivalent to -12.8m (minus Twelve Point Eight metres) OD (Ordnance Datum) or thereabout at its western boundary and -12.8m (minus Twelve Point Eight metres) OD (Ordnance Datum) or thereabouts at its eastern boundary, and the lower surface of the stratum of the sub-soil is at a level equivalent to -31.3m (minus Thirty One Point Three metres) OD (Ordnance Datum) or thereabout at its western boundary and -31.3m (minus Thirty One Point Three metres) OD (Ordnance Datum) or thereabouts at its eastern boundary.	1 - London Borough of Hammersmith & Fulham	BGL132290, BGL141939
MNTLA/2021	0.1 square metres of a stratum of subsoil below public footway (Warple Way) where the upper surface of the stratum of the sub-soil is at a level equivalent to -12.9m (minus Twelve Point Nine metres) OD (Ordnance Datum) or thereabout at its western boundary and -12.9m (minus Twelve Point Nine metres) OD (Ordnance Datum) or thereabouts at its eastern boundary, and the lower surface of the stratum of the sub-soil is at a level equivalent to -31.4m (minus Thirty One Point Four metres) OD (Ordnance Datum) or thereabout at its western boundary and -31.4m (minus Thirty One Point Four metres) OD (Ordnance Datum) or thereabouts at its eastern boundary.	3 - London Borough of Hounslow	AGL89142
MNTLA/2022	0.7 square metres of a stratum of subsoil below public footway (Warple Way) where the upper surface of the stratum of the sub-soil is at a level equivalent to -12.9m (minus Twelve Point Nine metres) OD (Ordnance Datum) or thereabout at its western boundary and -12.9m (minus Twelve Point Nine metres) OD (Ordnance Datum) or thereabouts at its eastern boundary, and the lower surface of the stratum of the sub-soil is at a level equivalent to -31.4m (minus Thirty One Point Four metres) OD	2 - London Borough of Hounslow	Unregistered

	(Ordnance Datum) or thereabout at its western boundary and -31.4m (minus Thirty One Point Four metres) OD (Ordnance Datum) or thereabouts at its eastern boundary.		
MNTLA/2023	2.4 square metres of a stratum of subsoil below garden (112, Woodstock Road) where the upper surface of the stratum of the sub-soil is at a level equivalent to -12.9m (minus Twelve Point Nine metres) OD (Ordnance Datum) or thereabout at its western boundary and -12.9m (minus Twelve Point Nine metres) OD (Ordnance Datum) or thereabouts at its eastern boundary, and the lower surface of the stratum of the sub-soil is at a level equivalent to -31.4m (minus Thirty One Point Four metres) OD (Ordnance Datum) or thereabout at its western boundary and -31.4m (minus Thirty One Point Four metres) OD (Ordnance Datum) or thereabouts at its eastern boundary.	44 - London Borough of Ealing	NGL596674
MNTLA/2024	80.7 square metres of a stratum of subsoil below house and garden (112, Woodstock Road) where the upper surface of the stratum of the sub-soil is at a level equivalent to -12.9m (minus Twelve Point Nine metres) OD (Ordnance Datum) or thereabout at its western boundary and -12.9m (minus Twelve Point Nine metres) OD (Ordnance Datum) or thereabouts at its eastern boundary, and the lower surface of the stratum of the sub-soil is at a level equivalent to -31.4m (minus Thirty One Point Four metres) OD (Ordnance Datum) or thereabout at its western boundary and -31.4m (minus Thirty One Point Four metres) OD (Ordnance Datum) or thereabouts at its eastern boundary.	1 - London Borough of Hounslow	NGL596674
MNTLA/2025	52.6 square metres of a stratum of subsoil below house and garden (110, Woodstock Road) where the upper surface of the stratum of the sub-soil is at a level equivalent to -12.9m (minus Twelve Point Nine metres) OD (Ordnance Datum) or thereabout at its western boundary and -12.9m (minus Twelve Point Nine metres) OD (Ordnance Datum) or thereabouts at its eastern boundary, and the lower surface of the stratum of the sub-soil is at a level equivalent to -31.4m (minus Thirty One Point Four metres) OD (Ordnance Datum) or thereabout at its western boundary and -31.4m (minus Thirty One Point Four metres) OD (Ordnance Datum) or thereabouts at its eastern boundary.	5 - London Borough of Hounslow	NGL594609
MNTLA/2026	66.1 square metres of a stratum of subsoil below house and garden (108 Woodstock Road) where the upper surface of the stratum of the sub-soil is at a level equivalent to -12.9m (minus Twelve Point Nine metres) OD (Ordnance Datum) or thereabout at its western boundary and -12.9m (minus Twelve Point Nine metres) OD (Ordnance Datum) or thereabouts at its eastern boundary, and the lower surface of the stratum of the sub-soil is at a level equivalent to -31.4m (minus Thirty One Point Four metres) OD (Ordnance Datum) or thereabout at its western boundary and -31.4m (minus Thirty One Point Four metres) OD (Ordnance Datum) or thereabouts at its eastern boundary.	6 - London Borough of Hounslow	NGL591590
MNTLA/2027	27.5 square metres of a stratum of subsoil below house, garden and garage (106, Woodstock Road) where the upper surface of the stratum of the sub-soil is at a level equivalent to -12.9m (minus Twelve Point Nine metres) OD (Ordnance Datum) or thereabout at its western boundary and -12.9m (minus Twelve Point Nine metres) OD (Ordnance Datum) or thereabouts at its eastern boundary, and the lower surface of the stratum of the sub-soil is at a level equivalent to -31.4m (minus Thirty One Point Four metres) OD (Ordnance Datum) or thereabout at its western boundary and -31.4m (minus Thirty One Point Four metres) OD (Ordnance Datum) or thereabouts at its eastern boundary.	7 - London Borough of Hounslow	LN244751
MNTLA/2028	32.1 square metres of a stratum of subsoil below house and garden (104, Woodstock Road) where the upper surface of the stratum of the sub-soil is at a level equivalent to -12.9m (minus Twelve Point Nine metres) OD (Ordnance Datum) or thereabout at its western boundary and -12.9m (minus Twelve Point Nine	8 - London Borough of Hounslow	BGL8375

	metres) OD (Ordnance Datum) or thereabouts at its eastern boundary, and the lower surface of the stratum of the sub-soil is at a level equivalent to -31.4m (minus Thirty One Point Four metres) OD (Ordnance Datum) or thereabout at its western boundary and -31.4m (minus Thirty One Point Four metres) OD (Ordnance Datum) or thereabouts at its eastern boundary.		
MNTLA/2029	36.1 square metres of a stratum of subsoil below house and garden (102, Woodstock Road) where the upper surface of the stratum of the sub-soil is at a level equivalent to -12.9m (minus Twelve Point Nine metres) OD (Ordnance Datum) or thereabout at its western boundary and -12.9m (minus Twelve Point Nine metres) OD (Ordnance Datum) or thereabouts at its eastern boundary, and the lower surface of the stratum of the sub-soil is at a level equivalent to -31.4m (minus Thirty One Point Four metres) OD (Ordnance Datum) or thereabout at its western boundary and -31.4m (minus Thirty One Point Four metres) OD (Ordnance Datum) or thereabouts at its eastern boundary.	9 - London Borough of Hounslow	AGL123051
MNTLA/2030	42.2 square metres of a stratum of subsoil below garden (100, Woodstock Road) where the upper surface of the stratum of the sub-soil is at a level equivalent to -12.9m (minus Twelve Point Nine metres) OD (Ordnance Datum) or thereabout at its western boundary and -13m (minus Thirteen metres) OD (Ordnance Datum) or thereabouts at its eastern boundary, and the lower surface of the stratum of the sub-soil is at a level equivalent to -31.4m (minus Thirty One Point Four metres) OD (Ordnance Datum) or thereabout at its western boundary and -31.5m (minus Thirty One Point Five metres) OD (Ordnance Datum) or thereabouts at its eastern boundary.	10 - London Borough of Hounslow	100528, AGL67861
MNTLA/2031	50.3 square metres of a stratum of subsoil below garden (98, Woodstock Road) where the upper surface of the stratum of the sub-soil is at a level equivalent to -13m (minus Thirteen metres) OD (Ordnance Datum) or thereabout at its western boundary and -13m (minus Thirteen metres) OD (Ordnance Datum) or thereabouts at its eastern boundary, and the lower surface of the stratum of the sub-soil is at a level equivalent to -31.5m (minus Thirty One Point Five metres) OD (Ordnance Datum) or thereabout at its western boundary and -31.5m (minus Thirty One Point Five metres) OD (Ordnance Datum) or thereabouts at its eastern boundary.	11 - London Borough of Hounslow	164764
MNTLA/2032	1125.5 square metres of a stratum of subsoil below playground, gardens and footways (Emlyn Gardens) where the upper surface of the stratum of the sub-soil is at a level equivalent to -12.8m (minus Twelve Point Eight metres) OD (Ordnance Datum) or thereabout at its western boundary and -13m (minus Thirteen metres) OD (Ordnance Datum) or thereabouts at its eastern boundary, and the lower surface of the stratum of the sub-soil is at a level equivalent to -31.3m (minus Thirty One Point Three metres) OD (Ordnance Datum) or thereabout at its western boundary and -31.5m (minus Thirty One Point Five metres) OD (Ordnance Datum) or thereabouts at its eastern boundary.	2 - London Borough of Hammersmith & Fulham	NGL271630, BGL140135
MNTLA/2033	0.2 square metres of a stratum of subsoil below electricity substation (10101) (Emlyn Gardens) where the upper surface of the stratum of the sub-soil is at a level equivalent to -12.9m (minus Twelve Point Nine metres) OD (Ordnance Datum) or thereabout at its western boundary and -12.9m (minus Twelve Point Nine metres) OD (Ordnance Datum) or thereabouts at its eastern boundary, and the lower surface of the stratum of the sub-soil is at a level equivalent to -31.4m (minus Thirty One Point Four metres) OD (Ordnance Datum) or thereabout at its western boundary and -31.4m (minus Thirty One Point Four metres) OD (Ordnance Datum) or thereabouts at its eastern boundary.	4 - London Borough of Hammersmith & Fulham	300712, BGL64608

MNTLA/2034	20.9 square metres of a stratum of subsoil below garden (96, Woodstock Road) where the upper surface of the stratum of the sub-soil is at a level equivalent to -13m (minus Thirteen metres) OD (Ordnance Datum) or thereabout at its western boundary and -13m (minus Thirteen metres) OD (Ordnance Datum) or thereabouts at its eastern boundary, and the lower surface of the stratum of the sub-soil is at a level equivalent to -31.5m (minus Thirty One Point Five metres) OD (Ordnance Datum) or thereabout at its western boundary and -31.5m (minus Thirty One Point Five metres) OD (Ordnance Datum) or thereabouts at its eastern boundary.	12 - London Borough of Hounslow	BGL1950
MNTLA/2035	3.2 square metres of a stratum of subsoil below garden (94, Woodstock Road) where the upper surface of the stratum of the sub-soil is at a level equivalent to -13m (minus Thirteen metres) OD (Ordnance Datum) or thereabout at its western boundary and -13m (minus Thirteen metres) OD (Ordnance Datum) or thereabouts at its eastern boundary, and the lower surface of the stratum of the sub-soil is at a level equivalent to -31.5m (minus Thirty One Point Five metres) OD (Ordnance Datum) or thereabout at its western boundary and -31.5m (minus Thirty One Point Five metres) OD (Ordnance Datum) or thereabouts at its eastern boundary.	15 - London Borough of Hounslow	AGL54110
MNTLA/2036	15.4 square metres of a stratum of subsoil below footway and hardstanding (Abinger Road) where the upper surface of the stratum of the sub-soil is at a level equivalent to -13m (minus Thirteen metres) OD (Ordnance Datum) or thereabout at its western boundary and -13m (minus Thirteen metres) OD (Ordnance Datum) or thereabouts at its eastern boundary, and the lower surface of the stratum of the sub-soil is at a level equivalent to -31.5m (minus Thirty One Point Five metres) OD (Ordnance Datum) or thereabout at its western boundary and -31.5m (minus Thirty One Point Five metres) OD (Ordnance Datum) or thereabouts at its eastern boundary.	13 - London Borough of Hounslow	100528
MNTLA/2037	245.6 square metres of a stratum of subsoil below house and garden (106, Abinger Road) where the upper surface of the stratum of the sub-soil is at a level equivalent to -13m (minus Thirteen metres) OD (Ordnance Datum) or thereabout at its western boundary and -13m (minus Thirteen metres) OD (Ordnance Datum) or thereabouts at its eastern boundary, and the lower surface of the stratum of the sub-soil is at a level equivalent to -31.5m (minus Thirty One Point Five metres) OD (Ordnance Datum) or thereabout at its western boundary and -31.5m (minus Thirty One Point Five metres) OD (Ordnance Datum) or thereabouts at its eastern boundary.	14 - London Borough of Hounslow	AGL55091
MNTLA/2038	373.3 square metres of a stratum of subsoil below hardstanding and playground (Emlyn Gardens) where the upper surface of the stratum of the sub-soil is at a level equivalent to -13m (minus Thirteen metres) OD (Ordnance Datum) or thereabout at its western boundary and -13m (minus Thirteen metres) OD (Ordnance Datum) or thereabouts at its eastern boundary, and the lower surface of the stratum of the sub-soil is at a level equivalent to -31.5m (minus Thirty One Point Five metres) OD (Ordnance Datum) or thereabout at its western boundary and -31.5m (minus Thirty One Point Five metres) OD (Ordnance Datum) or thereabouts at its eastern boundary.	5 - London Borough of Hammersmith & Fulham	NGL271630
MNTLA/2039	110.9 square metres of a stratum of subsoil below house and garden (104, Abinger Road) where the upper surface of the stratum of the sub-soil is at a level equivalent to -13m (minus Thirteen metres) OD (Ordnance Datum) or thereabout at its western boundary and -13m (minus Thirteen metres) OD (Ordnance Datum) or thereabouts at its eastern boundary, and the lower surface of the stratum of the sub-soil is at a level equivalent to -31.5m (minus Thirty One Point Five metres) OD	18 - London Borough of Hounslow	AGL46750

	(Ordnance Datum) or thereabout at its western boundary and -31.5m (minus Thirty One Point Five metres) OD (Ordnance Datum) or thereabouts at its eastern boundary.		
MNTLA/2040	101.6 square metres of a stratum of subsoil below house and garden (102, Abinger Road) where the upper surface of the stratum of the sub-soil is at a level equivalent to -13m (minus Thirteen metres) OD (Ordnance Datum) or thereabout at its western boundary and -13m (minus Thirteen metres) OD (Ordnance Datum) or thereabouts at its eastern boundary, and the lower surface of the stratum of the sub-soil is at a level equivalent to -31.5m (minus Thirty One Point Five metres) OD (Ordnance Datum) or thereabout at its western boundary and -31.5m (minus Thirty One Point Five metres) OD (Ordnance Datum) or thereabouts at its eastern boundary.	19 - London Borough of Hounslow	BGL70
MNTLA/2041	73.4 square metres of a stratum of subsoil below house and garden (100, Abinger Road) where the upper surface of the stratum of the sub-soil is at a level equivalent to -13m (minus Thirteen metres) OD (Ordnance Datum) or thereabout at its western boundary and -13m (minus Thirteen metres) OD (Ordnance Datum) or thereabouts at its eastern boundary, and the lower surface of the stratum of the sub-soil is at a level equivalent to -31.5m (minus Thirty One Point Five metres) OD (Ordnance Datum) or thereabout at its western boundary and -31.5m (minus Thirty One Point Five metres) OD (Ordnance Datum) or thereabouts at its eastern boundary.	20 - London Borough of Hounslow	182477
MNTLA/2042	78.9 square metres of a stratum of subsoil below house and garden (98, Abinger Road) where the upper surface of the stratum of the sub-soil is at a level equivalent to -13.1m (minus Thirteen Point One metres) OD (Ordnance Datum) or thereabout at its western boundary and -13.1m (minus Thirteen Point One metres) OD (Ordnance Datum) or thereabouts at its eastern boundary, and the lower surface of the stratum of the sub-soil is at a level equivalent to -31.6m (minus Thirty One Point Six metres) OD (Ordnance Datum) or thereabout at its western boundary and -31.6m (minus Thirty One Point Six metres) OD (Ordnance Datum) or thereabouts at its eastern boundary.	21 - London Borough of Hounslow	LN242618
MNTLA/2043	76.7 square metres of a stratum of subsoil below house and garden (96, Abinger Road) where the upper surface of the stratum of the sub-soil is at a level equivalent to -13.1m (minus Thirteen Point One metres) OD (Ordnance Datum) or thereabout at its western boundary and -13.1m (minus Thirteen Point One metres) OD (Ordnance Datum) or thereabouts at its eastern boundary, and the lower surface of the stratum of the sub-soil is at a level equivalent to -31.6m (minus Thirty One Point Six metres) OD (Ordnance Datum) or thereabout at its western boundary and -31.6m (minus Thirty One Point Six metres) OD (Ordnance Datum) or thereabouts at its eastern boundary.	22 - London Borough of Hounslow	267240
MNTLA/2044	78.8 square metres of a stratum of subsoil below house and garden (94, Abinger Road) where the upper surface of the stratum of the sub-soil is at a level equivalent to -13.1m (minus Thirteen Point One metres) OD (Ordnance Datum) or thereabout at its western boundary and -13.1m (minus Thirteen Point One metres) OD (Ordnance Datum) or thereabouts at its eastern boundary, and the lower surface of the stratum of the sub-soil is at a level equivalent to -31.6m (minus Thirty One Point Six metres) OD (Ordnance Datum) or thereabout at its western boundary and -31.6m (minus Thirty One Point Six metres) OD (Ordnance Datum) or thereabouts at its eastern boundary.	23 - London Borough of Hounslow	MX198492
MNTLA/2045	71.5 square metres of a stratum of subsoil below garden (92, Abinger Road) where the upper surface of the stratum of the sub-soil is at a level equivalent to -13.1m (minus Thirteen Point One metres) OD (Ordnance Datum) or thereabout at its western boundary and -13.1m (minus Thirteen Point One metres) OD	24 - London Borough of Hounslow	MX155072

	(Ordnance Datum) or thereabouts at its eastern boundary, and the lower surface of the stratum of the sub-soil is at a level equivalent to -31.6m (minus Thirty One Point Six metres) OD (Ordnance Datum) or thereabout at its western boundary and -31.6m (minus Thirty One Point Six metres) OD (Ordnance Datum) or thereabouts at its eastern boundary.		
MNTLA/2046	83.1 square metres of a stratum of subsoil below garden (90, Abinger Road) where the upper surface of the stratum of the sub-soil is at a level equivalent to -13.1m (minus Thirteen Point One metres) OD (Ordnance Datum) or thereabout at its western boundary and -13.1m (minus Thirteen Point One metres) OD (Ordnance Datum) or thereabouts at its eastern boundary, and the lower surface of the stratum of the sub-soil is at a level equivalent to -31.6m (minus Thirty One Point Six metres) OD (Ordnance Datum) or thereabout at its western boundary and -31.6m (minus Thirty One Point Six metres) OD (Ordnance Datum) or thereabouts at its eastern boundary.	25 - London Borough of Hounslow	MX347946
MNTLA/2047	73 square metres of a stratum of subsoil below garden (88, Abinger Road) where the upper surface of the stratum of the sub-soil is at a level equivalent to -13.1m (minus Thirteen Point One metres) OD (Ordnance Datum) or thereabout at its western boundary and -13.1m (minus Thirteen Point One metres) OD (Ordnance Datum) or thereabouts at its eastern boundary, and the lower surface of the stratum of the sub-soil is at a level equivalent to -31.6m (minus Thirty One Point Six metres) OD (Ordnance Datum) or thereabout at its western boundary and -31.6m (minus Thirty One Point Six metres) OD (Ordnance Datum) or thereabouts at its eastern boundary.	26 - London Borough of Hounslow	MX175427
MNTLA/2048	101.5 square metres of a stratum of subsoil below garden (86, Abinger Road) where the upper surface of the stratum of the sub-soil is at a level equivalent to -13.1m (minus Thirteen Point One metres) OD (Ordnance Datum) or thereabout at its western boundary and -13.1m (minus Thirteen Point One metres) OD (Ordnance Datum) or thereabouts at its eastern boundary, and the lower surface of the stratum of the sub-soil is at a level equivalent to -31.6m (minus Thirty One Point Six metres) OD (Ordnance Datum) or thereabout at its western boundary and -31.6m (minus Thirty One Point Six metres) OD (Ordnance Datum) or thereabouts at its eastern boundary.	27 - London Borough of Hounslow	MX361142
MNTLA/2049	65.7 square metres of a stratum of subsoil below garden (84, Abinger Road) where the upper surface of the stratum of the sub-soil is at a level equivalent to -13.1m (minus Thirteen Point One metres) OD (Ordnance Datum) or thereabout at its western boundary and -13.1m (minus Thirteen Point One metres) OD (Ordnance Datum) or thereabouts at its eastern boundary, and the lower surface of the stratum of the sub-soil is at a level equivalent to -31.6m (minus Thirty One Point Six metres) OD (Ordnance Datum) or thereabout at its western boundary and -31.6m (minus Thirty One Point Six metres) OD (Ordnance Datum) or thereabouts at its eastern boundary.	28 - London Borough of Hounslow	MX440670
MNTLA/2051	57.4 square metres of a stratum of subsoil below garden (80, Abinger Road) where the upper surface of the stratum of the sub-soil is at a level equivalent to -13.2m (minus Thirteen Point Two metres) OD (Ordnance Datum) or thereabout at its western boundary and -13.2m (minus Thirteen Point Two metres) OD (Ordnance Datum) or thereabouts at its eastern boundary, and the lower surface of the stratum of the sub-soil is at a level equivalent to -31.7m (minus Thirty One Point Seven metres) OD (Ordnance Datum) or thereabout at its western boundary and -31.7m (minus Thirty One Point Seven metres) OD (Ordnance Datum) or thereabouts at its eastern boundary.	30 - London Borough of Hounslow	MX229230

MNTLA/2052	51 square metres of a stratum of subsoil below garden (78, Abinger Road) where the upper surface of the stratum of the sub-soil is at a level equivalent to -13.2m (minus Thirteen Point Two metres) OD (Ordnance Datum) or thereabout at its western boundary and -13.2m (minus Thirteen Point Two metres) OD (Ordnance Datum) or thereabouts at its eastern boundary, and the lower surface of the stratum of the sub-soil is at a level equivalent to -31.7m (minus Thirty One Point Seven metres) OD (Ordnance Datum) or thereabout at its western boundary and -31.7m (minus Thirty One Point Seven metres) OD (Ordnance Datum) or thereabouts at its eastern boundary.	31 - London Borough of Hounslow	NGL561323
MNTLA/2053	75 square metres of a stratum of subsoil below garden (76, Abinger Road) where the upper surface of the stratum of the sub-soil is at a level equivalent to -13.2m (minus Thirteen Point Two metres) OD (Ordnance Datum) or thereabout at its western boundary and -13.2m (minus Thirteen Point Two metres) OD (Ordnance Datum) or thereabouts at its eastern boundary, and the lower surface of the stratum of the sub-soil is at a level equivalent to -31.7m (minus Thirty One Point Seven metres) OD (Ordnance Datum) or thereabout at its western boundary and -31.7m (minus Thirty One Point Seven metres) OD (Ordnance Datum) or thereabouts at its eastern boundary.	32 - London Borough of Hounslow	NGL67919, AGL164270
MNTLA/2054	41.9 square metres of a stratum of subsoil below garden (74, Abinger Road) where the upper surface of the stratum of the sub-soil is at a level equivalent to -13.2m (minus Thirteen Point Two metres) OD (Ordnance Datum) or thereabout at its western boundary and -13.2m (minus Thirteen Point Two metres) OD (Ordnance Datum) or thereabouts at its eastern boundary, and the lower surface of the stratum of the sub-soil is at a level equivalent to -31.7m (minus Thirty One Point Seven metres) OD (Ordnance Datum) or thereabout at its western boundary and -31.7m (minus Thirty One Point Seven metres) OD (Ordnance Datum) or thereabouts at its eastern boundary.	33 - London Borough of Hounslow	NGL13700, AGL121205
MNTLA/2055	103.8 square metres of a stratum of subsoil below garden (72, Abinger Road) where the upper surface of the stratum of the sub-soil is at a level equivalent to -13.2m (minus Thirteen Point Two metres) OD (Ordnance Datum) or thereabout at its western boundary and -13.2m (minus Thirteen Point Two metres) OD (Ordnance Datum) or thereabouts at its eastern boundary, and the lower surface of the stratum of the sub-soil is at a level equivalent to -31.7m (minus Thirty One Point Seven metres) OD (Ordnance Datum) or thereabout at its western boundary and -31.7m (minus Thirty One Point Seven metres) OD (Ordnance Datum) or thereabouts at its eastern boundary.	34 - London Borough of Hounslow	NGL421289
MNTLA/2056	75.6 square metres of a stratum of subsoil below garden (70, Abinger Road) where the upper surface of the stratum of the sub-soil is at a level equivalent to -13.2m (minus Thirteen Point Two metres) OD (Ordnance Datum) or thereabout at its western boundary and -13.2m (minus Thirteen Point Two metres) OD (Ordnance Datum) or thereabouts at its eastern boundary, and the lower surface of the stratum of the sub-soil is at a level equivalent to -31.7m (minus Thirty One Point Seven metres) OD (Ordnance Datum) or thereabout at its western boundary and -31.7m (minus Thirty One Point Seven metres) OD (Ordnance Datum) or thereabouts at its eastern boundary.	35 - London Borough of Hounslow	NGL223120
MNTLA/2057	30.7 square metres of a stratum of subsoil below allotments (Emlyn Gardens) where the upper surface of the stratum of the sub-soil is at a level equivalent to -13.2m (minus Thirteen Point Two metres) OD (Ordnance Datum) or thereabout at its western boundary and -13.3m (minus Thirteen Point Two metres) OD (Ordnance Datum) or thereabouts at its eastern boundary, and the lower surface of the stratum of the sub-soil is at a level equivalent to -31.7m (minus Thirty One Point Seven metres) OD	36 - London Borough of Hounslow	AGL391345

	(Ordnance Datum) or thereabout at its western boundary and -31.8m (minus Thirty One Point Eight metres) OD (Ordnance Datum) or thereabouts at its eastern boundary.		
MNTLA/2058	3596.7 square metres of a stratum of subsoil below allotment gardens (Emlyn Gardens) where the upper surface of the stratum of the sub-soil is at a level equivalent to -13m (minus Thirteen metres) OD (Ordnance Datum) or thereabout at its western boundary and -13.5m (minus Thirteen Point Five metres) OD (Ordnance Datum) or thereabouts at its eastern boundary, and the lower surface of the stratum of the sub-soil is at a level equivalent to -31.5m (minus Thirty One Point Five metres) OD (Ordnance Datum) or thereabout at its western boundary and -32m (minus Thirty Two metres) OD (Ordnance Datum) or thereabouts at its eastern boundary.	6 - London Borough of Hammersmith & Fulham	NGL271630, BGL43591
MNTLA/2059	2.5 square metres of a stratum of subsoil below garden (55, Emlyn Road) where the upper surface of the stratum of the sub-soil is at a level equivalent to -13.2m (minus Thirteen Point Two metres) OD (Ordnance Datum) or thereabout at its western boundary and -13.2m (minus Thirteen Point Two metres) OD (Ordnance Datum) or thereabouts at its eastern boundary, and the lower surface of the stratum of the sub-soil is at a level equivalent to -31.7m (minus Thirty One Point Seven metres) OD (Ordnance Datum) or thereabout at its western boundary and -31.7m (minus Thirty One Point Seven metres) OD (Ordnance Datum) or thereabouts at its eastern boundary.	11 - London Borough of Hammersmith & Fulham	LN174173
MNTLA/2060	11.5 square metres of a stratum of subsoil below garden (53, Emlyn Road) where the upper surface of the stratum of the sub-soil is at a level equivalent to -13.2m (minus Thirteen Point Two metres) OD (Ordnance Datum) or thereabout at its western boundary and -13.3m (minus Thirteen Point Two metres) OD (Ordnance Datum) or thereabouts at its eastern boundary, and the lower surface of the stratum of the sub-soil is at a level equivalent to -31.7m (minus Thirty One Point Seven metres) OD (Ordnance Datum) or thereabout at its western boundary and -31.8m (minus Thirty One Point Eight metres) OD (Ordnance Datum) or thereabouts at its eastern boundary.	12 - London Borough of Hammersmith & Fulham	LN174266
MNTLA/2061	18.5 square metres of a stratum of subsoil below garden (51, Emlyn Road) where the upper surface of the stratum of the sub-soil is at a level equivalent to -13.3m (minus Thirteen Point Two metres) OD (Ordnance Datum) or thereabout at its western boundary and -13.3m (minus Thirteen Point Three metres) OD (Ordnance Datum) or thereabouts at its eastern boundary, and the lower surface of the stratum of the sub-soil is at a level equivalent to -31.8m (minus Thirty One Point Eight metres) OD (Ordnance Datum) or thereabout at its western boundary and -31.8m (minus Thirty One Point Eight metres) OD (Ordnance Datum) or thereabouts at its eastern boundary.	13 - London Borough of Hammersmith & Fulham	LN173160
MNTLA/2062	31.7 square metres of a stratum of subsoil below garden (49, Emlyn Road) where the upper surface of the stratum of the sub-soil is at a level equivalent to -13.3m (minus Thirteen Point Three metres) OD (Ordnance Datum) or thereabout at its western boundary and -13.3m (minus Thirteen Point Three metres) OD (Ordnance Datum) or thereabouts at its eastern boundary, and the lower surface of the stratum of the sub-soil is at a level equivalent to -31.8m (minus Thirty One Point Eight metres) OD (Ordnance Datum) or thereabout at its western boundary and -31.8m (minus Thirty One Point Eight metres) OD (Ordnance Datum) or thereabouts at its eastern boundary.	21 - London Borough of Hammersmith & Fulham	LN173542
MNTLA/2063	35.4 square metres of a stratum of subsoil below garden (47, Emlyn Road) where the upper surface of the stratum of the sub-soil is at a level equivalent to -13.3m (minus Thirteen Point Three metres) OD (Ordnance Datum) or thereabout at its western boundary and -13.3m (minus Thirteen Point Three metres) OD	22 - London Borough of Hammersmith & Fulham	LN172415

	(Ordnance Datum) or thereabouts at its eastern boundary, and the lower surface of the stratum of the sub-soil is at a level equivalent to -31.8m (minus Thirty One Point Eight metres) OD (Ordnance Datum) or thereabout at its western boundary and -31.8m (minus Thirty One Point Eight metres) OD (Ordnance Datum) or thereabouts at its eastern boundary.		
MNTLA/2064	44.5 square metres of a stratum of subsoil below garden (45, Emlyn Road) where the upper surface of the stratum of the sub-soil is at a level equivalent to -13.3m (minus Thirteen Point Three metres) OD (Ordnance Datum) or thereabout at its western boundary and -13.3m (minus Thirteen Point Three metres) OD (Ordnance Datum) or thereabouts at its eastern boundary, and the lower surface of the stratum of the sub-soil is at a level equivalent to -31.8m (minus Thirty One Point Eight metres) OD (Ordnance Datum) or thereabout at its western boundary and -31.8m (minus Thirty One Point Eight metres) OD (Ordnance Datum) or thereabouts at its eastern boundary.	23 - London Borough of Hammersmith & Fulham	LN173706
MNTLA/2065	48.7 square metres of a stratum of subsoil below garden (43, Emlyn Road) where the upper surface of the stratum of the sub-soil is at a level equivalent to -13.3m (minus Thirteen Point Three metres) OD (Ordnance Datum) or thereabout at its western boundary and -13.3m (minus Thirteen Point Three metres) OD (Ordnance Datum) or thereabouts at its eastern boundary, and the lower surface of the stratum of the sub-soil is at a level equivalent to -31.8m (minus Thirty One Point Eight metres) OD (Ordnance Datum) or thereabout at its western boundary and -31.8m (minus Thirty One Point Eight metres) OD (Ordnance Datum) or thereabouts at its eastern boundary.	24 - London Borough of Hammersmith & Fulham	LN176668
MNTLA/2066	53.3 square metres of a stratum of subsoil below garden (41, Emlyn Road) where the upper surface of the stratum of the sub-soil is at a level equivalent to -13.3m (minus Thirteen Point Three metres) OD (Ordnance Datum) or thereabout at its western boundary and -13.3m (minus Thirteen Point Three metres) OD (Ordnance Datum) or thereabouts at its eastern boundary, and the lower surface of the stratum of the sub-soil is at a level equivalent to -31.8m (minus Thirty One Point Eight metres) OD (Ordnance Datum) or thereabout at its western boundary and -31.8m (minus Thirty One Point Eight metres) OD (Ordnance Datum) or thereabouts at its eastern boundary.	25 - London Borough of Hammersmith & Fulham	LN173100

EXECUTION PAGE

The Common seal of **Thames Water**)
Utilities Limited was affixed in the)
presence of:)



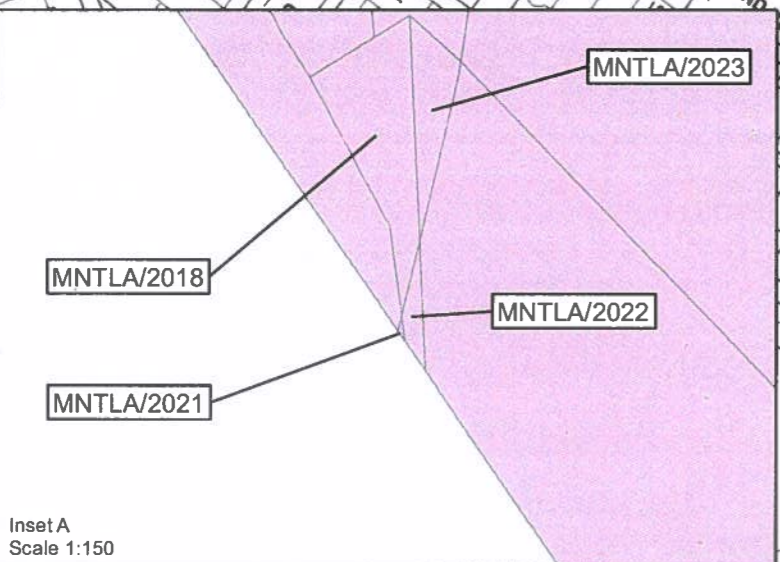
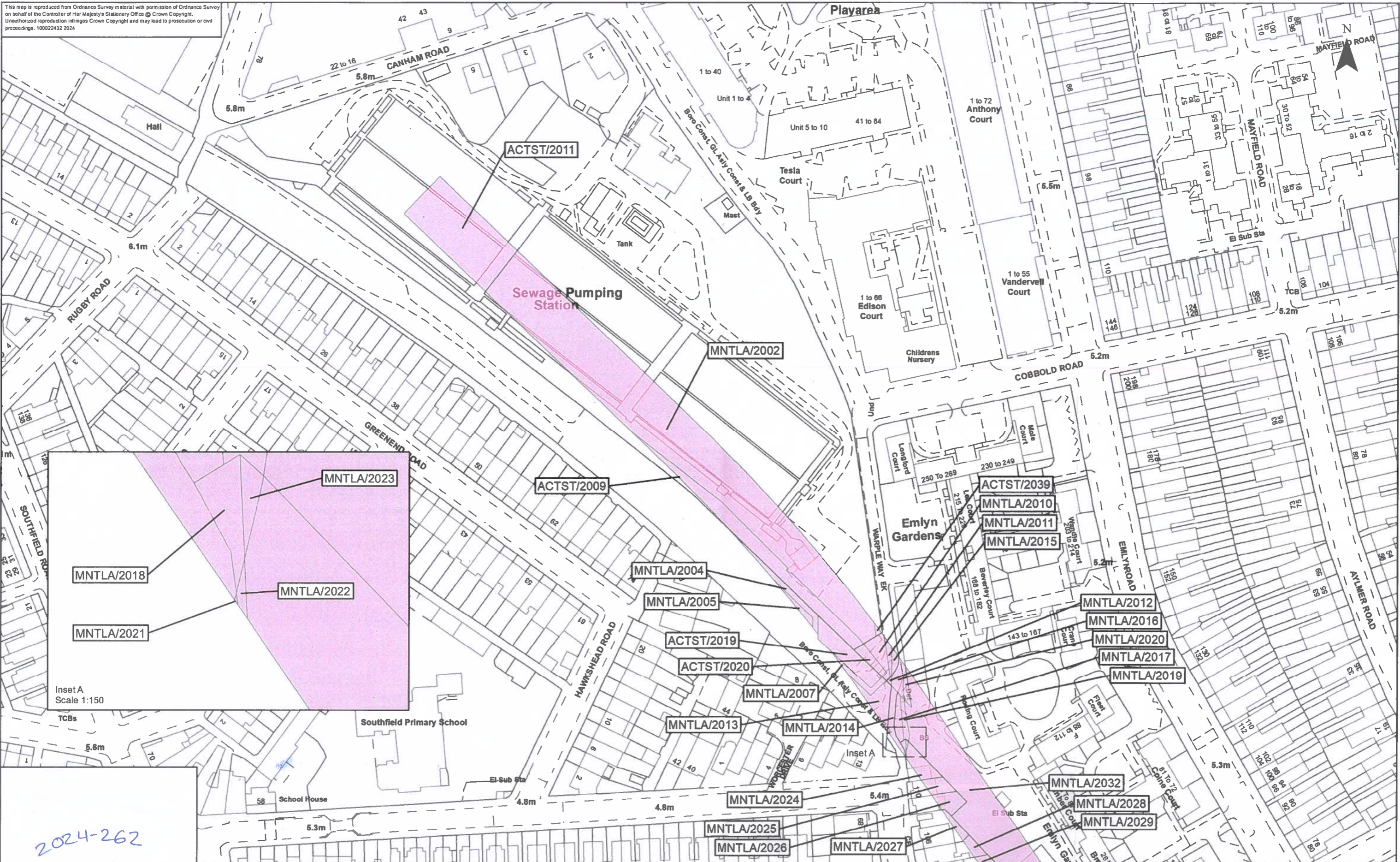
[Handwritten Signature]
.....

Authorised Signatory


27/1/24
.....


Date

This map is reproduced from Ordnance Survey material with permission of Ordnance Survey on behalf of the Controller of Her Majesty's Stationery Office © Crown Copyright. Unauthorized reproduction infringes Crown Copyright and may lead to prosecution or civil proceedings. 100022432 2024



2024-262

The Common seal of Thames Water Utilities Limited was affixed in the presence of:

 Authorized Signatory
 Dated: 31/1/24

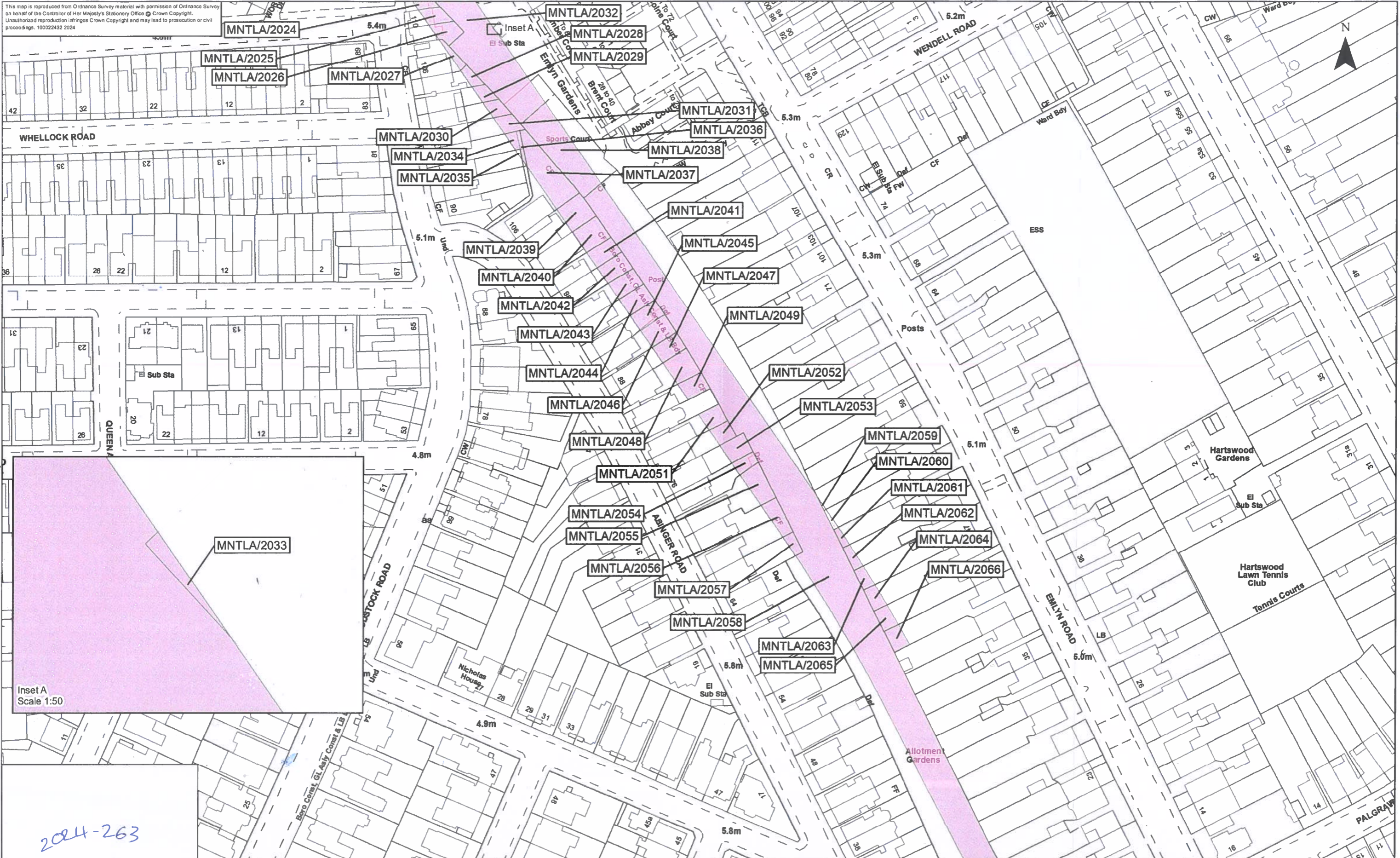
Key
 Permanent Acquisition of Land



Tideway
 Date: 25/01/2024
 Scale at A3: 1:1250

The Thames Water Utilities Limited (Thames Tideway Tunnel) Order 2014 (AS AMENDED) SI 2014 NO.2384
 Drawing Title
 Plan referred to in General Vesting Declaration No. 5 of The Thames Water Utilities Limited (Thames Tideway Tunnel) Order 2014 (AS AMENDED) SI 2014 NO.2384
 Status: For identification only
 Document Reference: 70054885-NTC-GVD-TR1-GVD5-0001

Rev	Revision Date	Revision Details	Drawn	Check	Rev/Iss	App'd
C	25/01/2024		AB	JH	LC	VB



2024-263

The Common seal of Thames Water Utilities Limited was affixed in the presence of:

Shakunna
Authorised Signatory

Dated: 20/1/2024

Key
 Permanent Acquisition of Land



The Thames Water Utilities Limited (Thames Tideway Tunnel) Order 2014 (AS AMENDED) SI 2014 NO.2384

Plan referred to in General Vesting Declaration No. 5 of The Thames Water Utilities Limited (Thames Tideway Tunnel) Order 2014 (AS AMENDED) SI 2014 NO.2384

For identification only

Rev	Revision Date	Revision Details	Drawn	Check	Review	App'd
C	25/01/2024		AB	JH	LC	VB

Date: 25/01/2024


Scale at A3 1:1,250


Document Reference 70054885-NTC-GVD-TR1-GVD5-0002

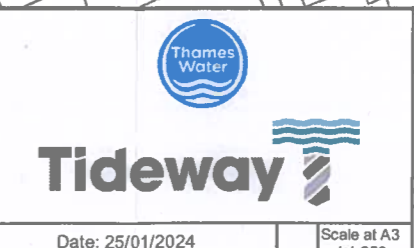
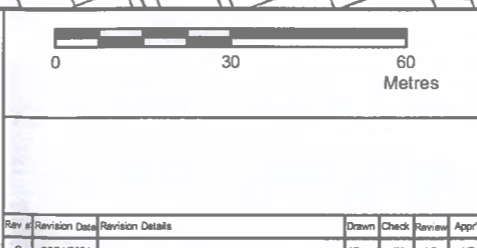
This map is reproduced from Ordnance Survey material with permission of Ordnance Survey on behalf of the Controller of Her Majesty's Stationary Office © Crown Copyright. Unauthorised reproduction infringes Crown Copyright and may lead to prosecution or civil proceedings. 100022432 2024



2024-264

The Common seal of Thames Water Utilities Limited was affixed in the presence of:

 Authorised Signatory
 Dated: 31/1/24

Key
 Permanent Acquisition of Land



Job Title: The Thames Water Utilities Limited (Thames Tideway Tunnel) Order 2014 (AS AMENDED) SI 2014 NO 2384
 Drawing Title: Plan referred to in General Vesting Declaration No. 5 of The Thames Water Utilities Limited (Thames Tideway Tunnel) Order 2014 (AS AMENDED) SI 2014 NO.2384
 Status: For identification only
 Document Reference: 70054885-NTC-GVD-TR1-GVD5-0003

