



Tideway



**MORGAN
SINDALL**

Balfour Beatty

Hammersmith Pumping Station CLWG

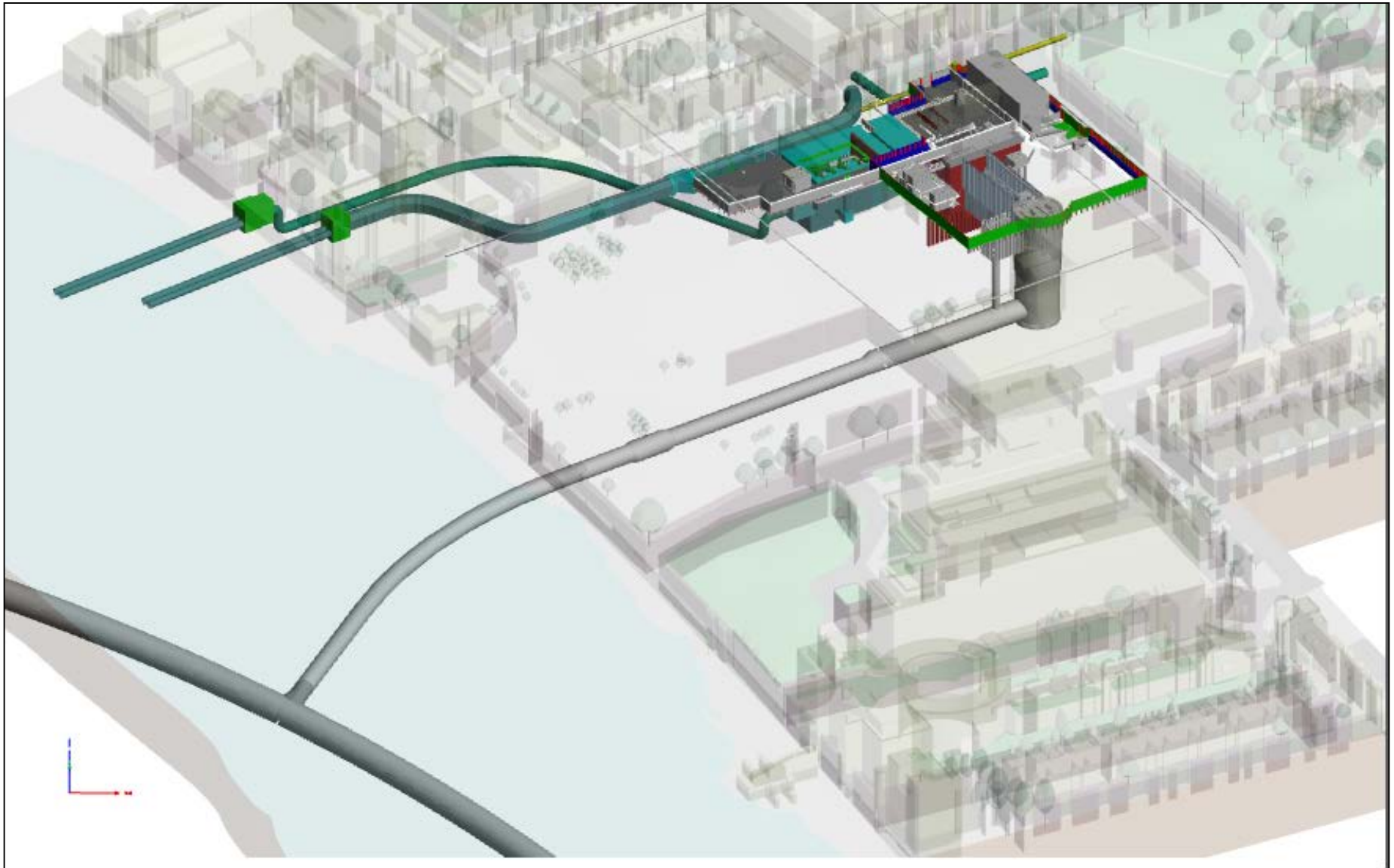
Tuesday 25 September 2018

Progress Update

Aerial View of Hammersmith Pumping Station



Hammersmith Pumping Station – Tideway Works



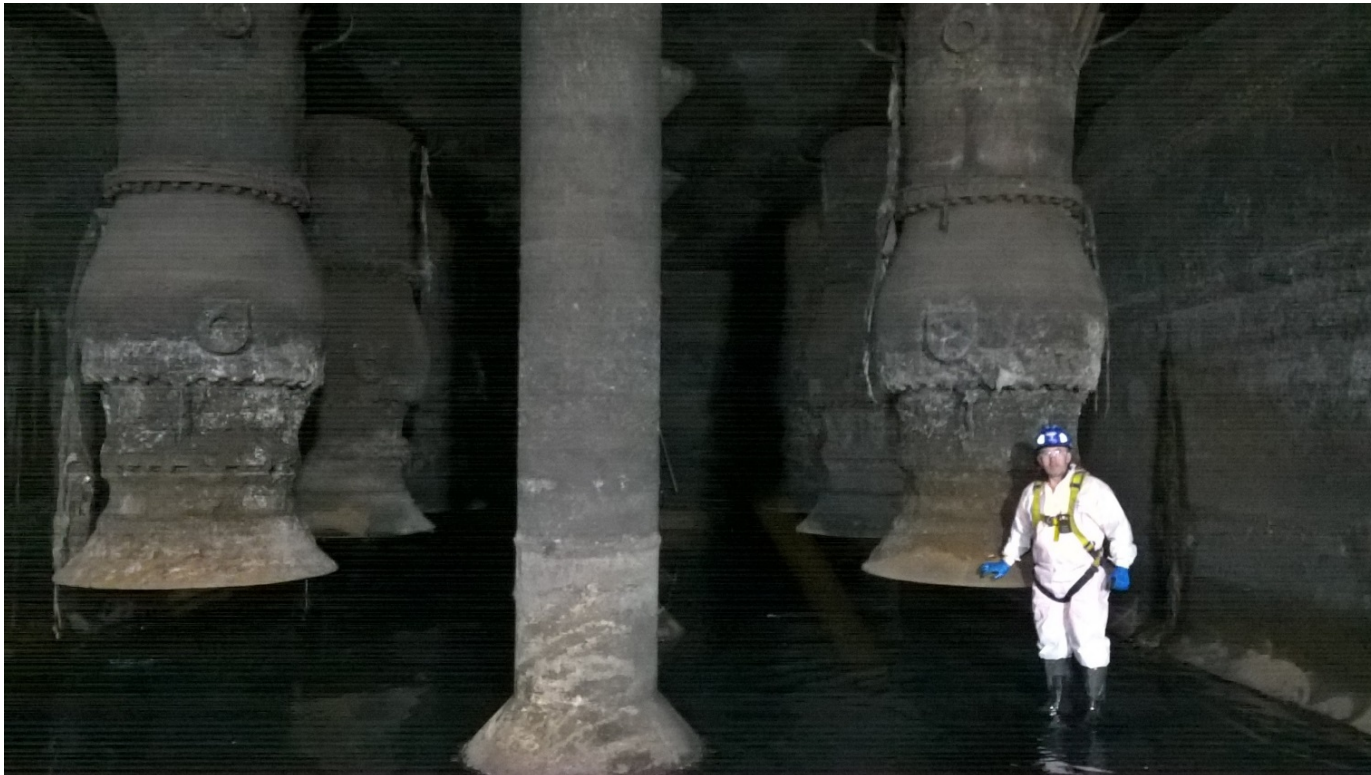
Works Update - Inlet Channel Works

- Sewer weirwalls and flume pipes – All fully installed
- Removal of the cutwater wall – 75% completed



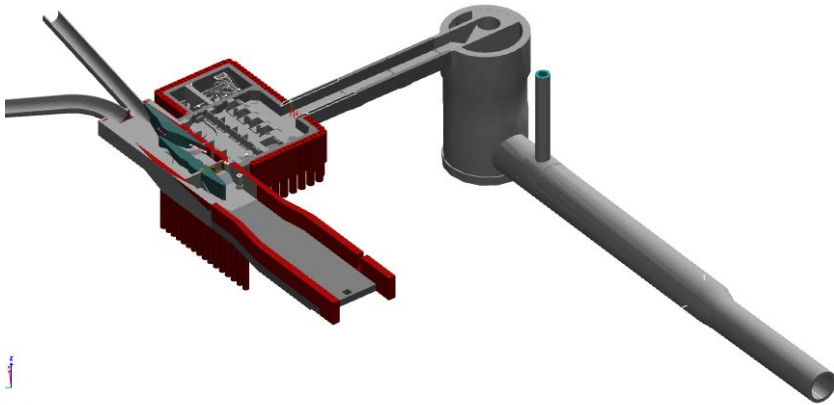
Inlet Channel Works

- 8am – 6pm only
- Working in the live stormwater sewer
- Majority of silt which had built up over the years has been removed by large tankers
- Several large concrete structures are currently being removed
- Works stop during heavy rainfall as the chamber rapidly floods



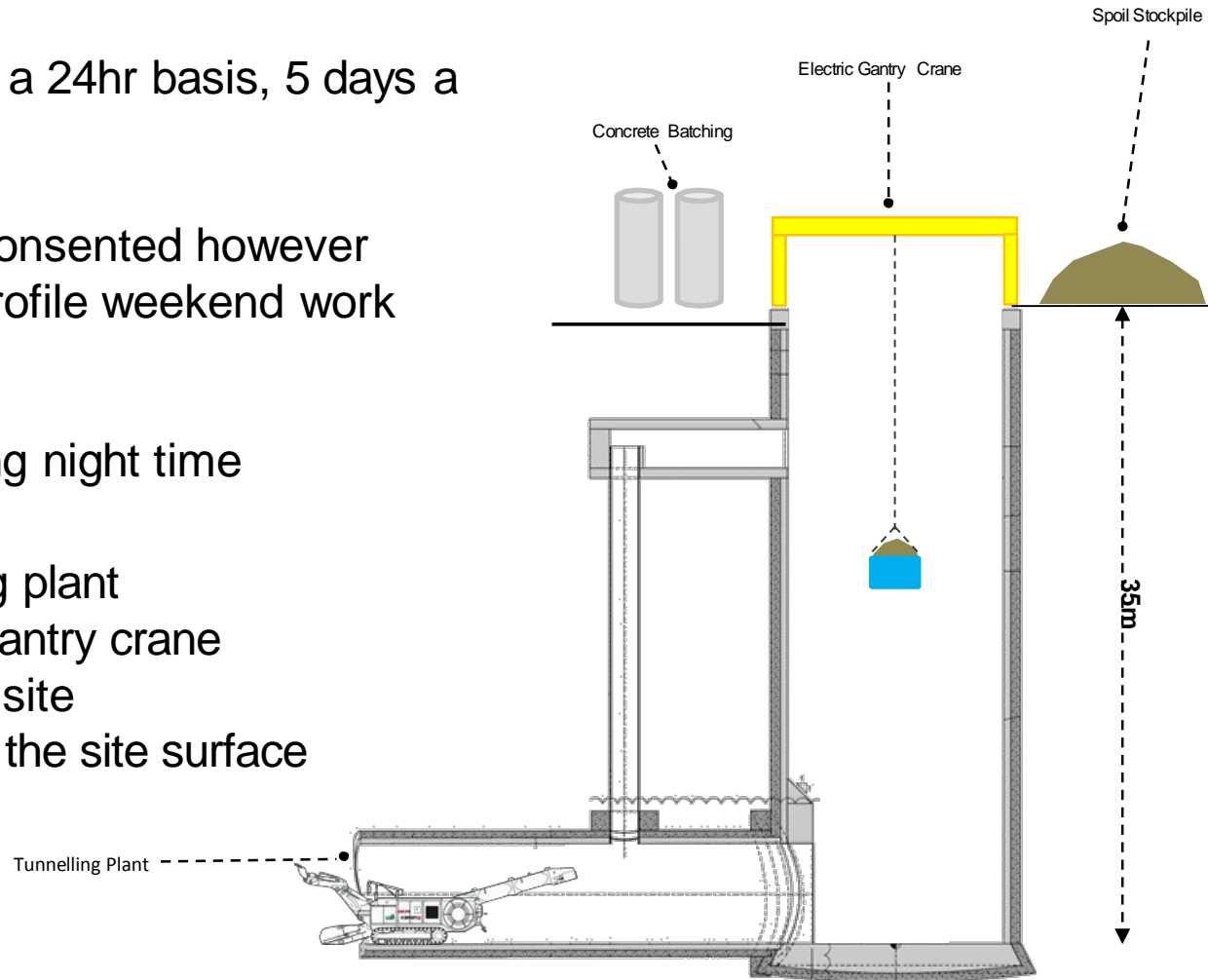
Works Update - Interception Chamber

- Capping frame concreted
- 2nd structural steel frame installed
- Excavated to 8m below ground level

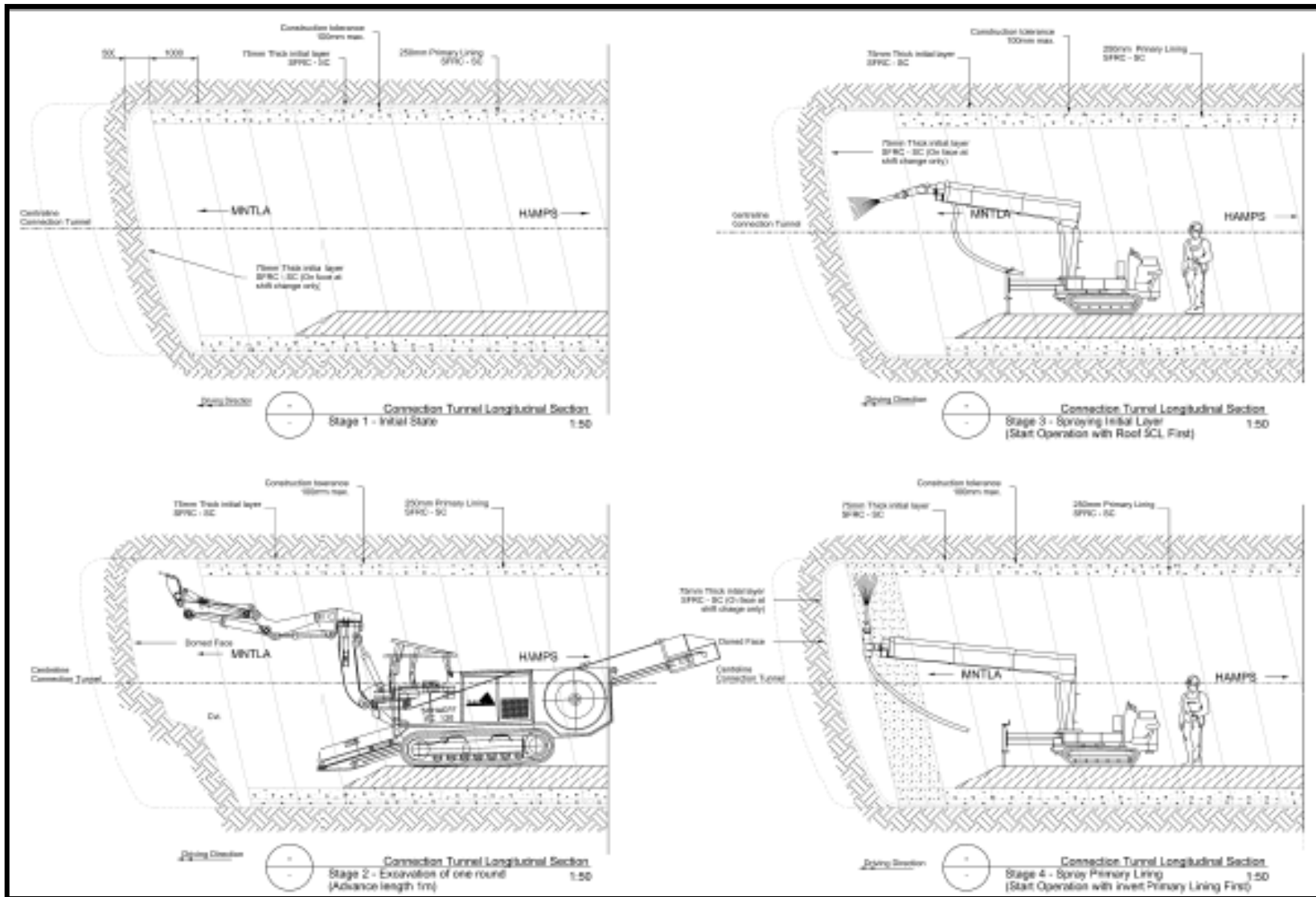


Tunnelling - Night time working

- Night Shift working commenced 25th June
- Tunnelling to take place on a 24hr basis, 5 days a week. Monday to Friday
- Tunnel construction 24/7 consented however given current production profile weekend work not required
- Activities undertaken during night time working:
 - Operation of tunnelling plant
 - Operation of electric gantry crane
 - Concrete batching on site
 - Stockpiling of spoil on the site surface

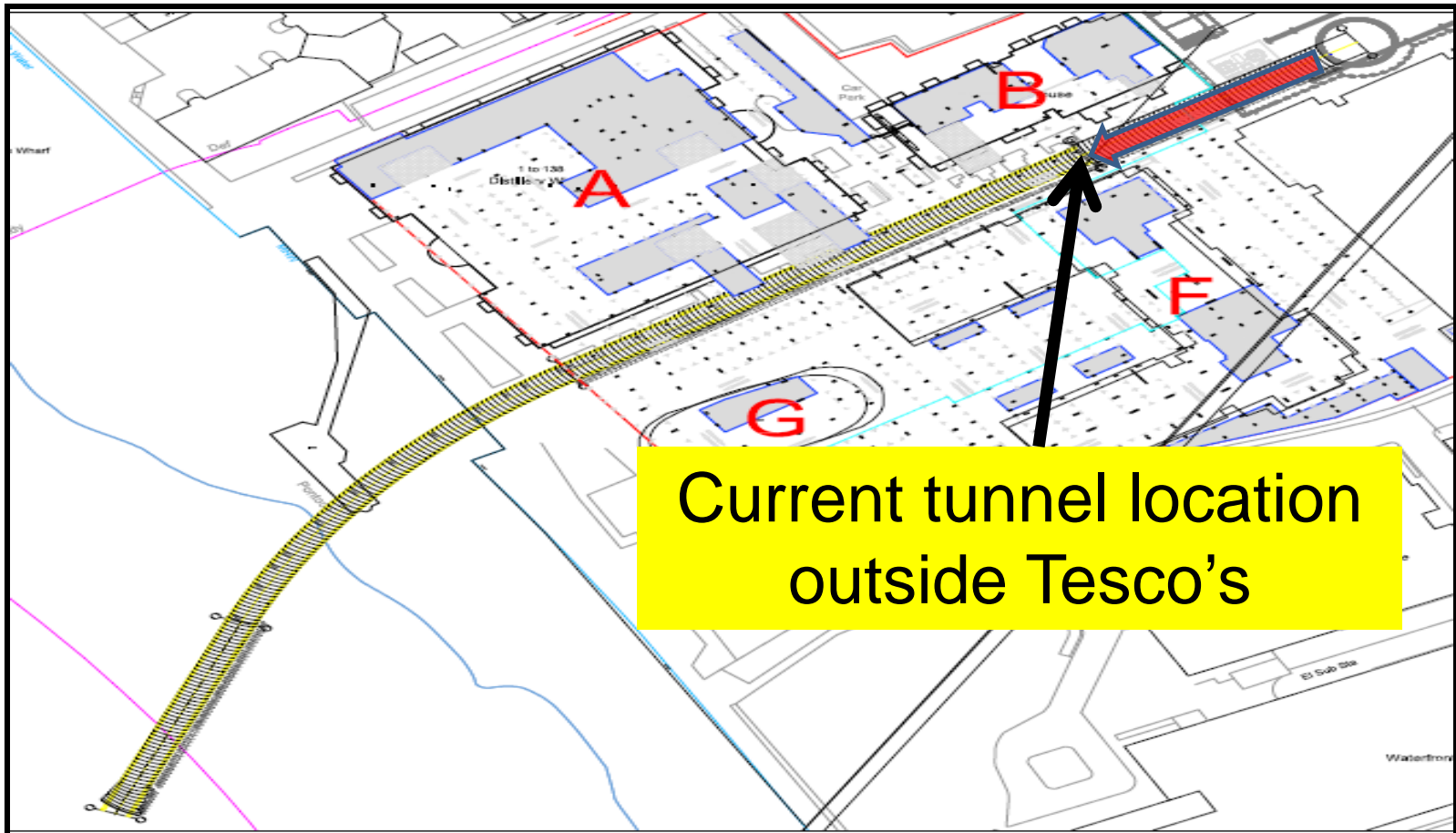


Tunnel Construction – Method of Tunnelling



Works Update - Tunnel Construction

- 300m Long Tunnel
- Currently 65m metres completed



Tunnel Construction



Short Term Look Ahead (next 3 months)

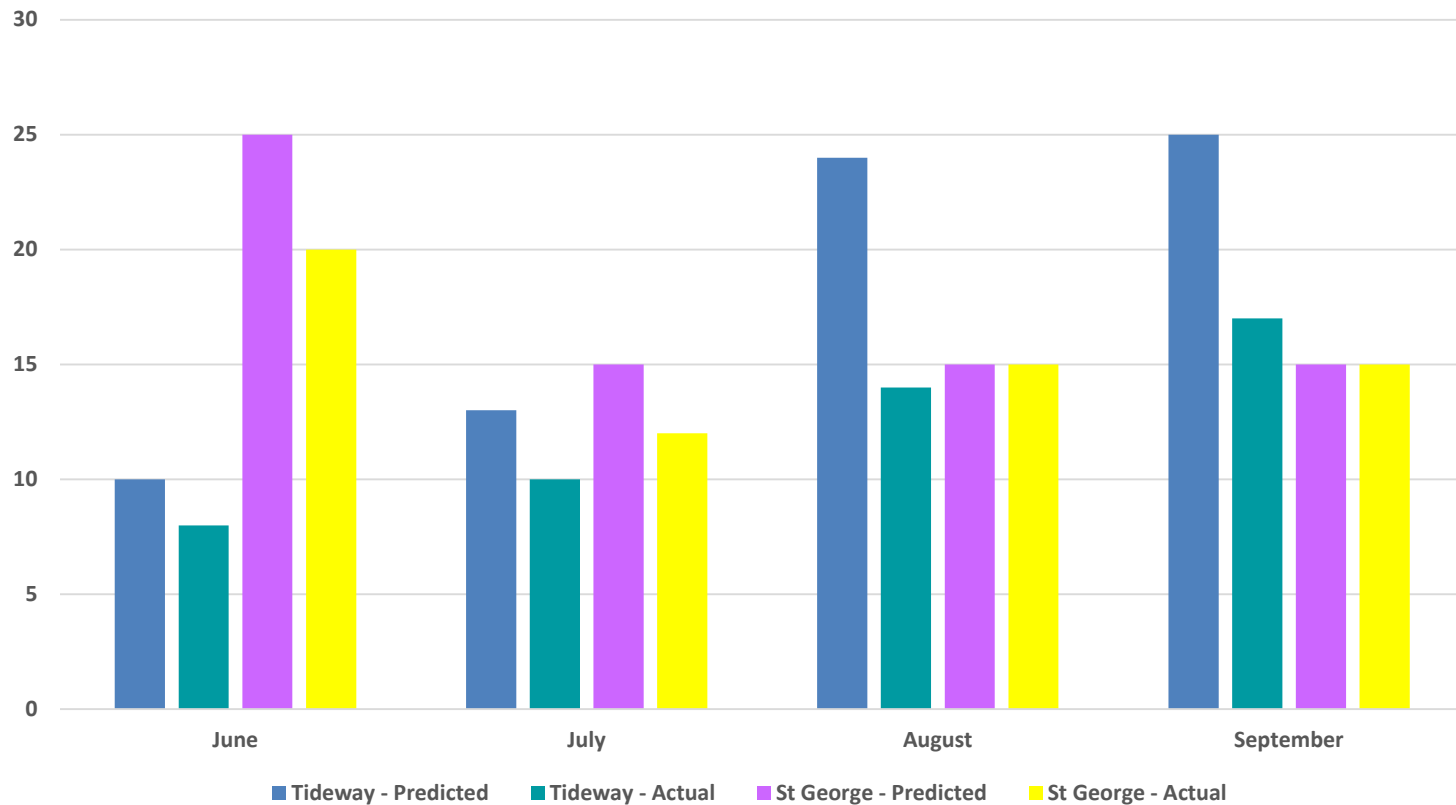
	September	October	November	December	January
Tunnel Construction					
Inlet Channel - Demolish Wall					
Inlet Channel - Cast Base Slab / Removal of Screed					
Inlet Channel - Cast New Beams & Benching					
Interception Chamber - Excavate / Concrete					

Tunnel construction 24-hours working Monday - Friday (planned)
 Tunnel construction 24/7 Consented
 Tunnel excavation till Jan-2019

Core working hours 8am-6pm Monday-Friday and 8am-1pm Saturday
 One hour startup and shutdown periods either side of working hours
 Christmas shut down period: From 6pm on 21 December - 7am on 7 January 2019

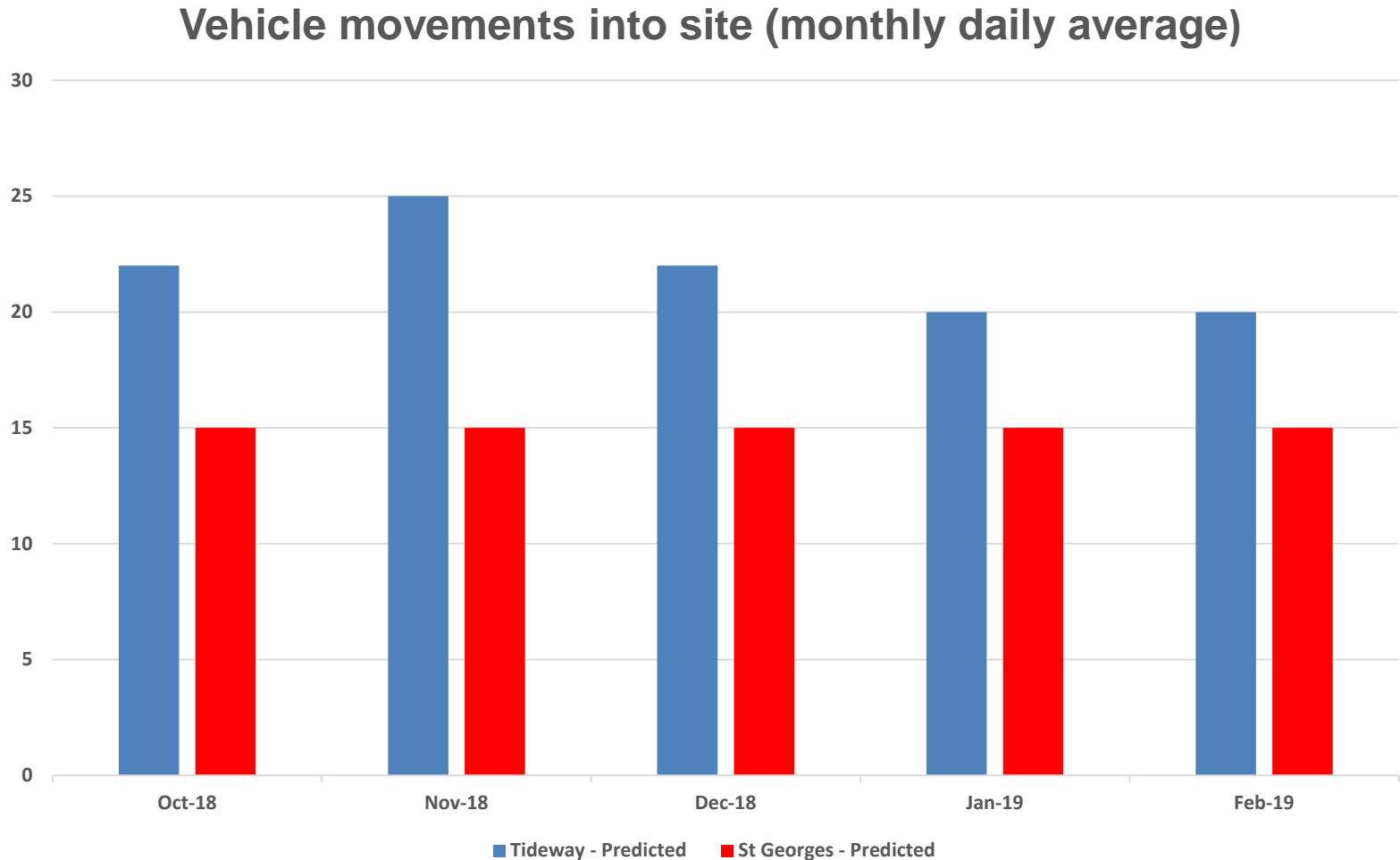
Predicted and Actual Vehicle Movements: June – September 2018

Vehicle movements into site (monthly daily average)



7 Shared Traffic Marshals between Tideway and St George

Predicted Forecast Vehicle Movements: October 2018 to February 2019



7 Shared Traffic Marshals between Tideway and St George

Community Engagement

Community Engagement and Complaints

22 Complaints / Enquiry received since last meeting:

1. **2 x Day time works** – *Residents were advised of current works taking place with a short look ahead of future works*
 2. **3 x Odour complaints** – *Advised residents that the recent smells have been caused by the temporary pumping system that Tideway had set up to manage the dry weather flow into the pumping station. Thames Water Stakeholder Liaison also spoke to the residents*
 3. **17 x Noise complaints from night time works** – *Advised residents of investigation, confirmation of findings and mitigations put in place*
- All other enquiries have been responded to within 24 hours (where possible)



Call: 08000 30 80 80
Email: helpdesk@tidewaylondon
Write to: Freepost TIDEWAY

Community Engagement and Complaints

As a result of complaints received regarding our night time works, we carried out a number of investigations and amended works to mitigate

We have added acoustic enclosure to powder silos:



Before



After

Community Engagement and Complaints

We have added acoustic blankets around the top of our silos and a bridge that was linked between them has been removed:



Before



After

Community Engagement and Complaints

We have installed additional mitigation around the compressors and installed noise suppression on the electric gantry crane with fully welded rails



Acoustic enclosure around compressors



Gantry crane with fully welded rails

Community Engagement and Complaints

In addition to the attenuation measures already installed and following further investigations:

- Matting has been placed at the bottom of the shaft to 'soften' the skip landing
- We are due to install acoustic tape around the inverter surround of the gantry crane to reduce the high pitch noise
- Additional insulation to be added around silos
- We will continue to hold daily staff briefings relaying the importance of staff conduct and detail planning of the works
- We will continue to investigate and wherever possible, further reduce any noise disturbance

Community Engagement

Gardening work carried out at Orchard House Sheltered Housing Association

“This is by far the best the garden has looked. I’m amazed at what they have been able to achieve in such little time. The garden has completely transformed this place for the better and has given residents as sense of pride. I’ve seen residents now going outside and looking at the plants and flowers, something that has not happened here in a long time. The team have been working so hard and each and every one of them have always found time to stop and talk to the residents. I’ve been here for a while now and have never heard some of the residents laugh as much as I have, it’s been amazing to see.”

Salma Begum - Housing Officer for Orchard House



HOW TO MAKE A CLAIM IF YOU ARE AFFECTED BY TIDEWAY'S WORK

Who do I go to for advice?

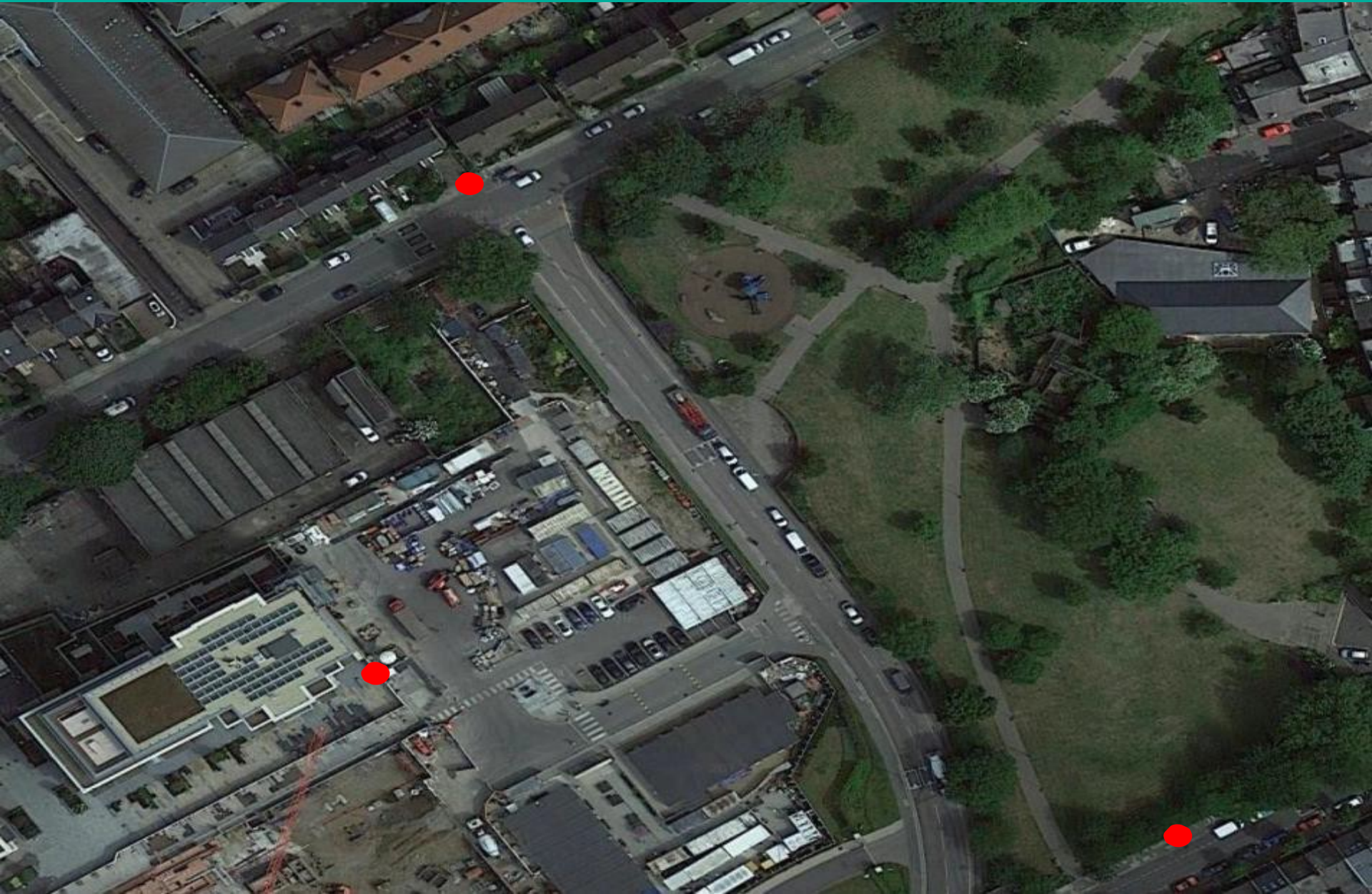
- Independent Advisory Service (IAS) Helpline for independent advice: **0800 917 8845** or info@tidewayias.co.uk
- Tideway's Compensation Officer, **Louise Davis**, for personal assistance and advice: via Tideway Helpdesk **08000 30 80 80** or helpdesk@tidewaylondon or direct **07971 077165** or louise.davis@tidewaylondon

How do I submit my claim?

- Louise can submit your claim to the Independent Compensation Panel (ICP) on your behalf, or
- You can submit your claim direct to the [ICP: admin@tidewayicp.london](mailto:admin@tidewayicp.london)
- The IAS can send you a claim form, or you can download a claim form off [the Tideway website: www.tideway.london/help-advice/compensation-information/Independent-Compensation-Panel](http://www.tideway.london/help-advice/compensation-information/Independent-Compensation-Panel)

Questions

NOISE MONITORING LOCATIONS



AIR QUALITY MONITORING LOCATIONS

