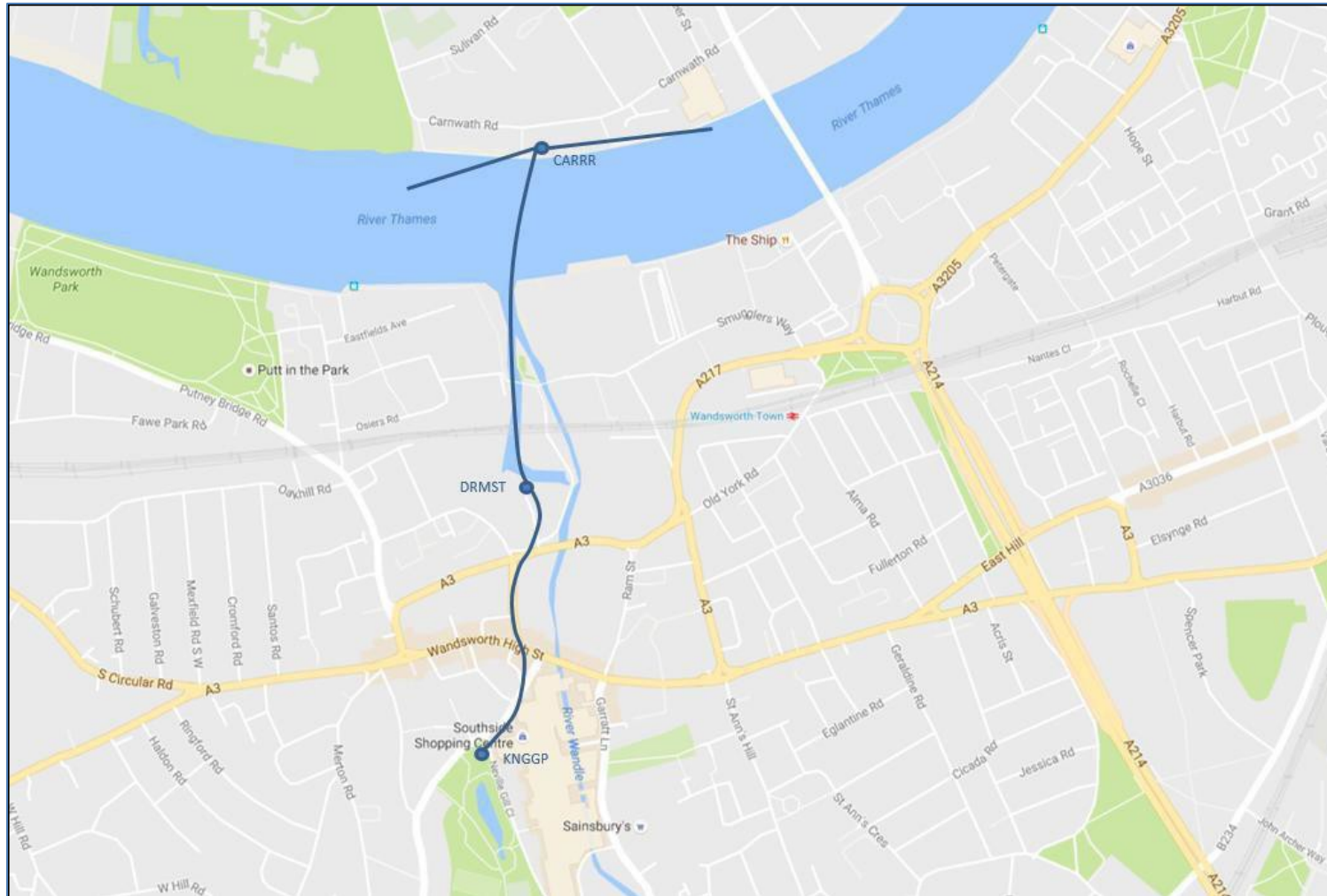


# **Dormay Street & King George's Park Community Liaison Working Group 05 July 2018**



**DORMAY STREET**

# Frogmore Connection Tunnel - Location





# Works Update: River Wall Strengthening March 2018

## Activities associated with River Wall Strengthening

- Contiguous Piles and strengthening of River Wall RW577 is complete



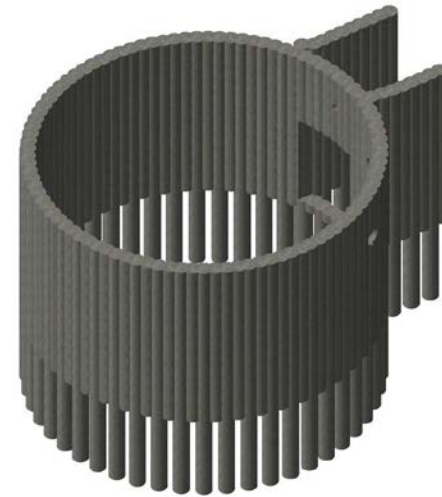
# Works update: Drop Shaft Piling

## April 2018 – June 2018

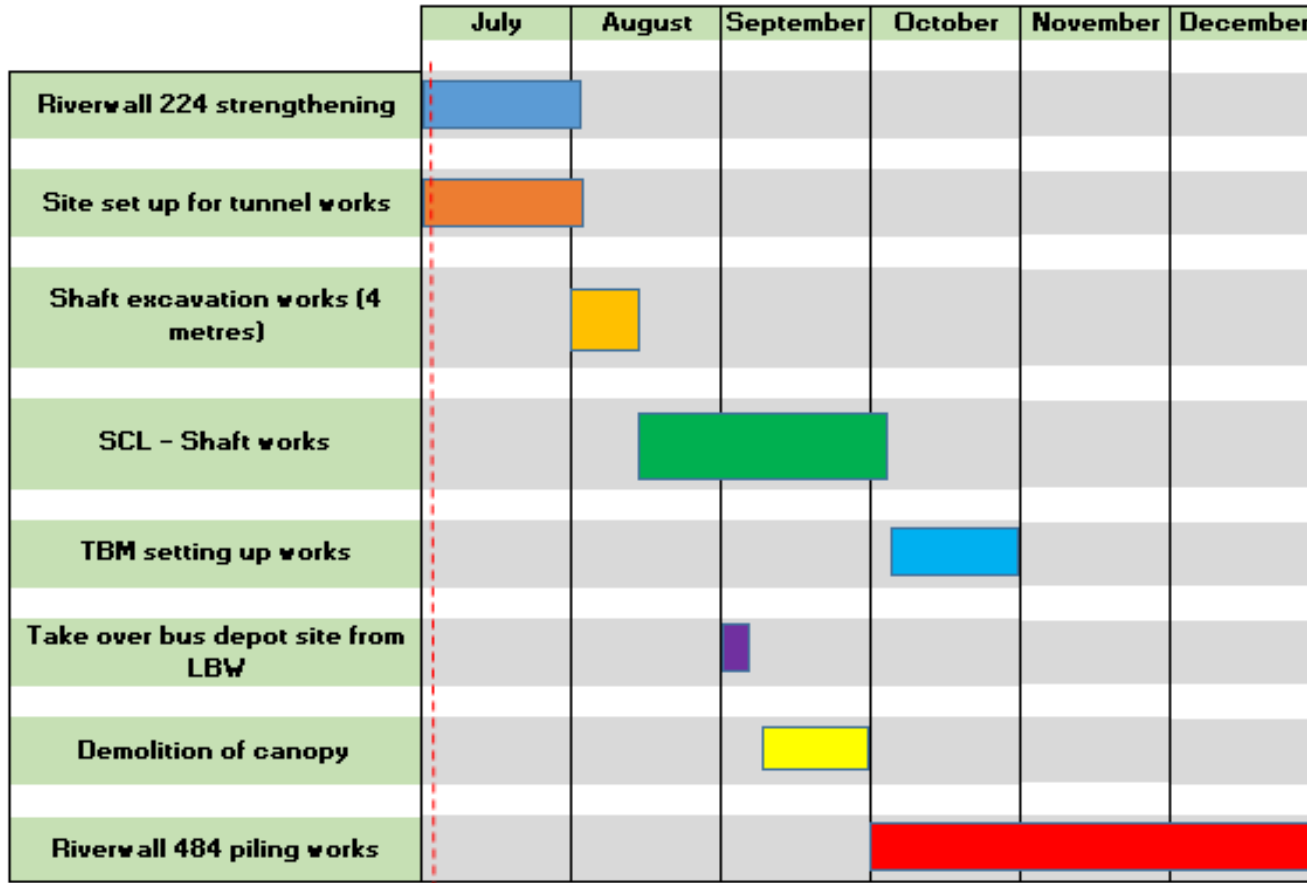


### Activities associated with Drop Shaft Piling

- Concrete guide wall at surface level installed
- 58 Pile “Female” Piles to 8m deep
- 57 Pile “Male” Piles to 12m deep



# \*Short Term Look Ahead (Next 3 Months)



\*Core working hours 8am-6pm Monday – Friday and 8am-1pm Saturday One hour start up and shut down periods either side of working hours.

\* Certain works are located in the foreshore and construction activities must be undertaken at high tide. Any tidal working outside of standard working hours will be agreed with the local authority through a Section 61 consent, dispensation or variation and to relevant stakeholders.





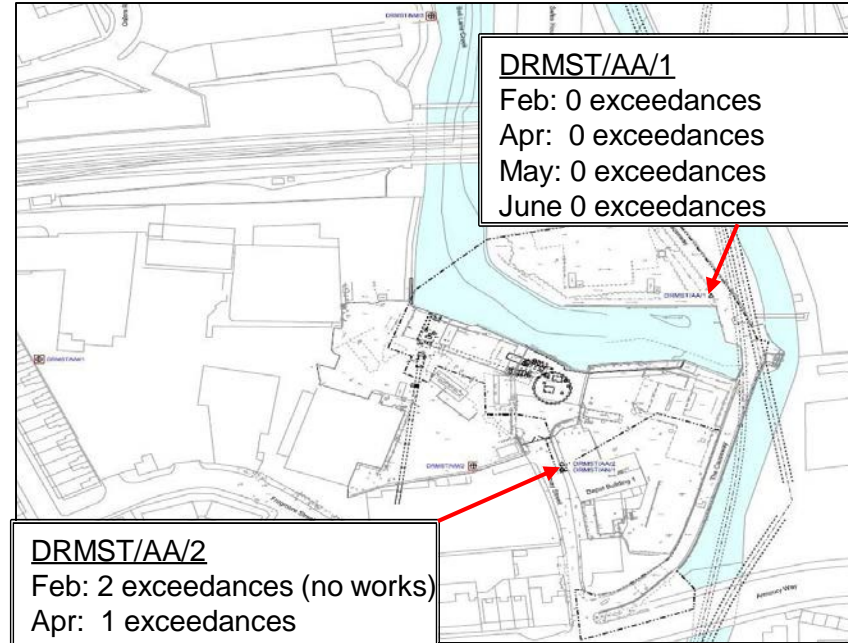
# Dormay Street - Site Plan with Air Quality and Noise Monitor locations



Noise Monitor



Air Quality Monitor



DRMST/AA/1

Feb: 0 exceedances  
Apr: 0 exceedances  
May: 0 exceedances  
June 0 exceedances

DRMST/AA/2

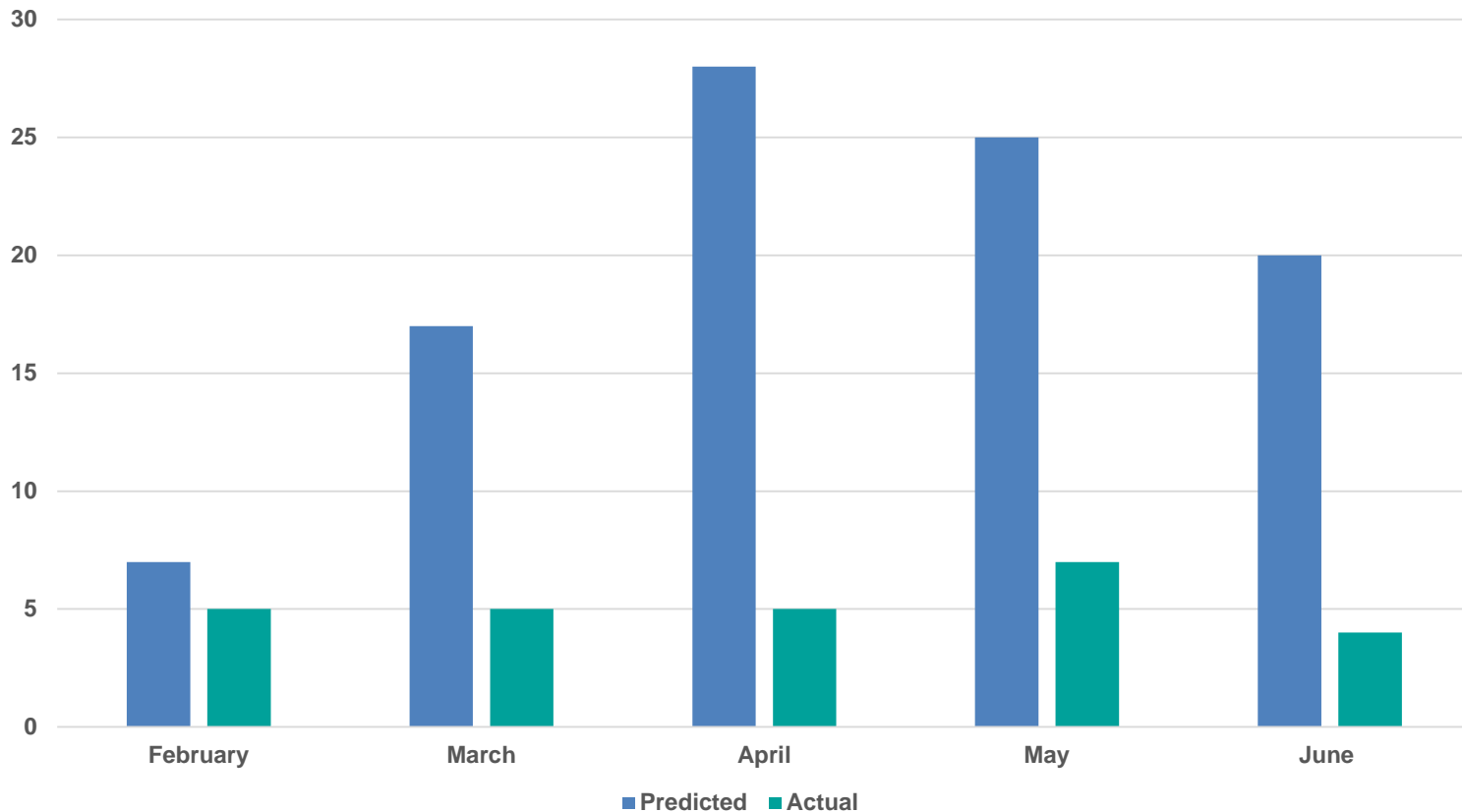
Feb: 2 exceedances (no works)  
Apr: 1 exceedances  
May: 2 exceedances  
June 9 exceedances

- No exceedance of the DCO set noise level of 75db
- 'Exceedance' refers to PM10 concentrations in excess of Mayor of London recommended alert level of 250µg/m<sup>3</sup> (as a 15 minute mean).



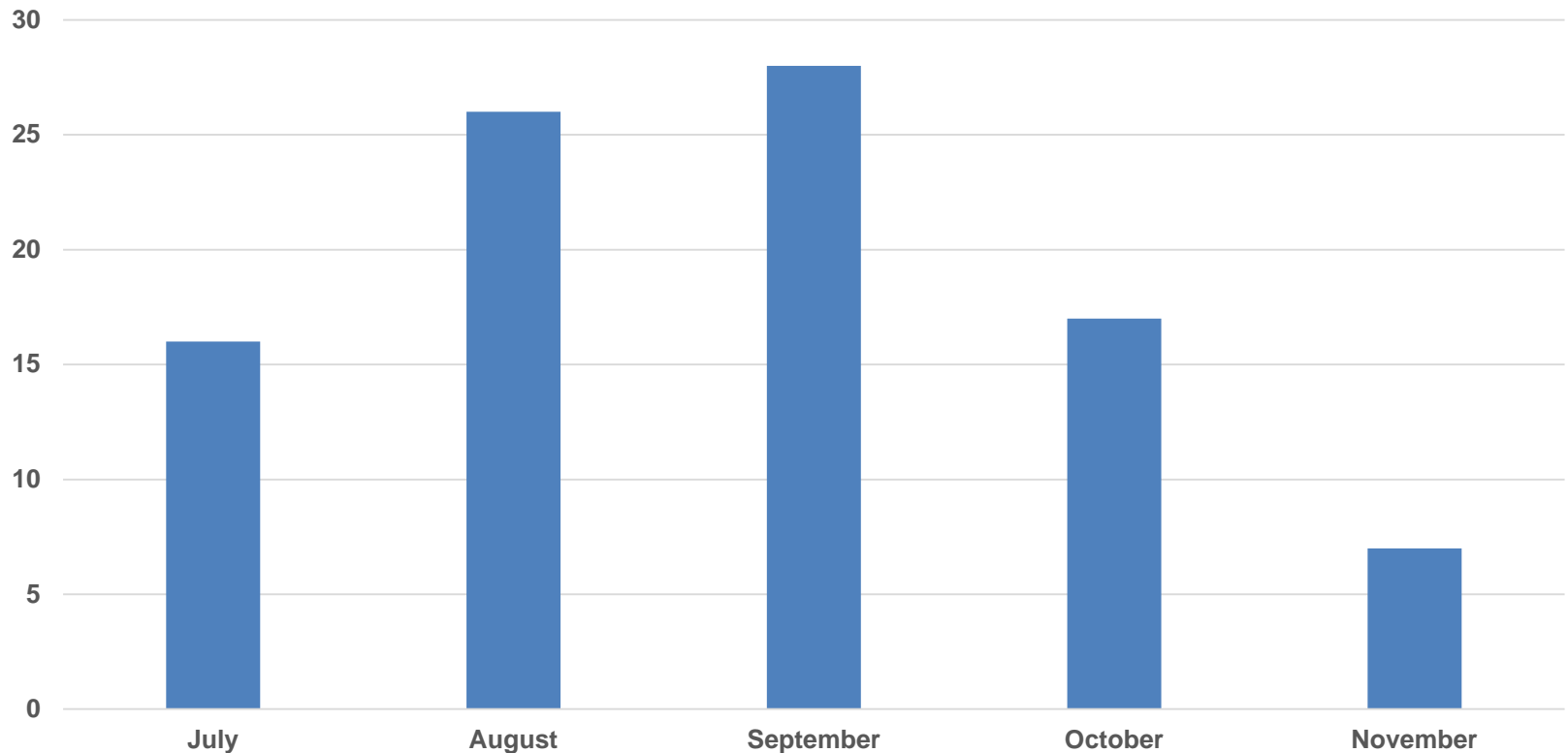
# Predicted and Actual Heavy Goods Vehicles (HGVs) coming into site: February – June 2018

Predicted and Actual Heavy Goods Vehicle coming into site  
(Monthly Daily Average) February - June 2018



# Predicted Heavy Goods Vehicles (HGVs) coming into site: July to November 2018

Predicted Heavy Goods Vehicles (HGVs) coming into site  
(Monthly Daily Average) July - November



**QUESTIONS?**



# KING GEORGE'S PARK

# King George's Park March 2018

- Hoarding works started
- Completed UXO Survey
- Mini-Pile installation for CSO Bridge
- Casting Pile Caps for CSO Bridge





# King George's Park April 2018

- Completed hardstanding works on North side of site
- Cast Substation foundation
- Completed construction of CSO Bridge
- Cast Crane Base





# King George's Park May 2018

- Delivery of Welfare Cabins
- Completion of Hardstanding on South side of site
- Augering works in preparation for Sheet Piling Works
- Continued with hoarding works



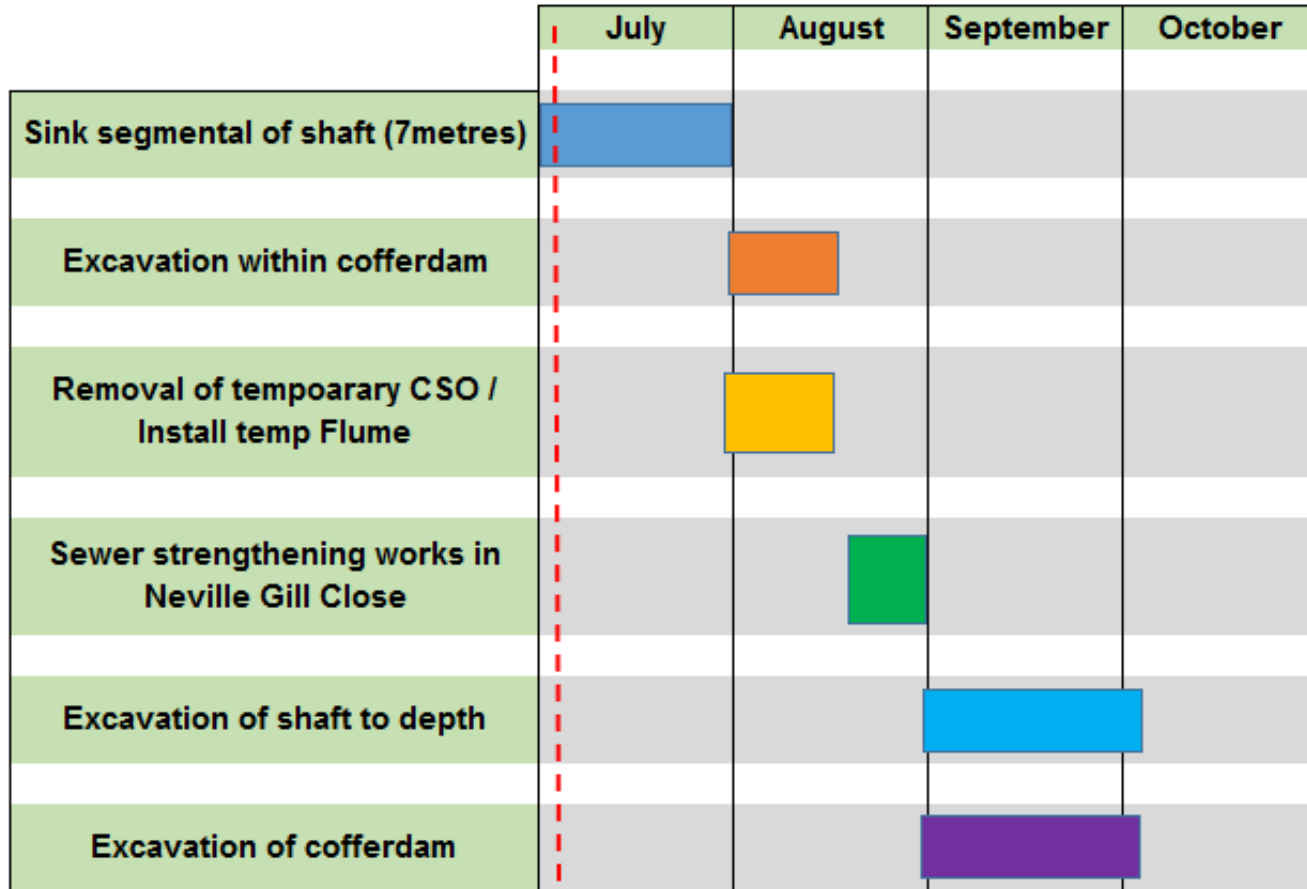


# King George's Park June 2018

- Shaft Excavation and construction of Muck bay
- Completion of Sheet Piling works
- Completion of Welfare Fit-Out works
- Ivy installation onto hoarding



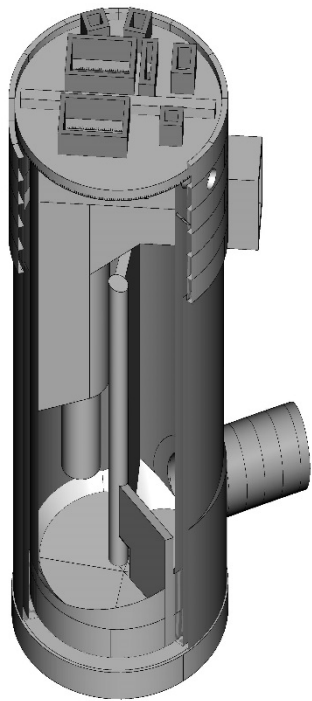
# \*Short Term Look Ahead (Next 3 Months)



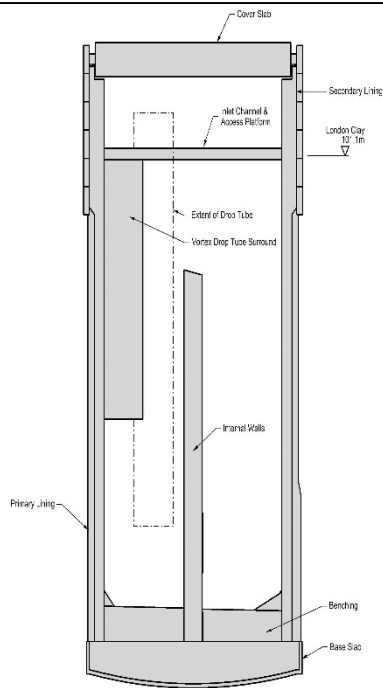
\*Core working hours 8am-6pm Monday – Friday and 8am-1pm Saturday One hour start up and shut down periods either side of working hours



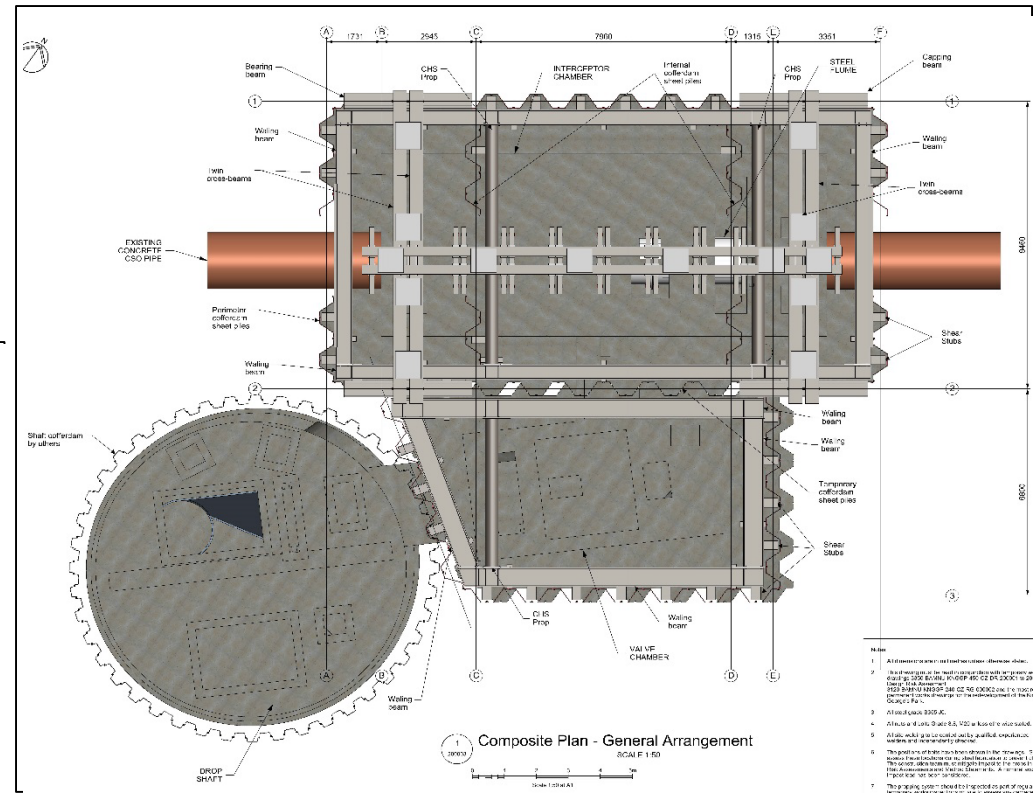
# King George's Park – Shaft and Cofferdam Structures



Stage 7 - Isometric View  
Scale 1:100

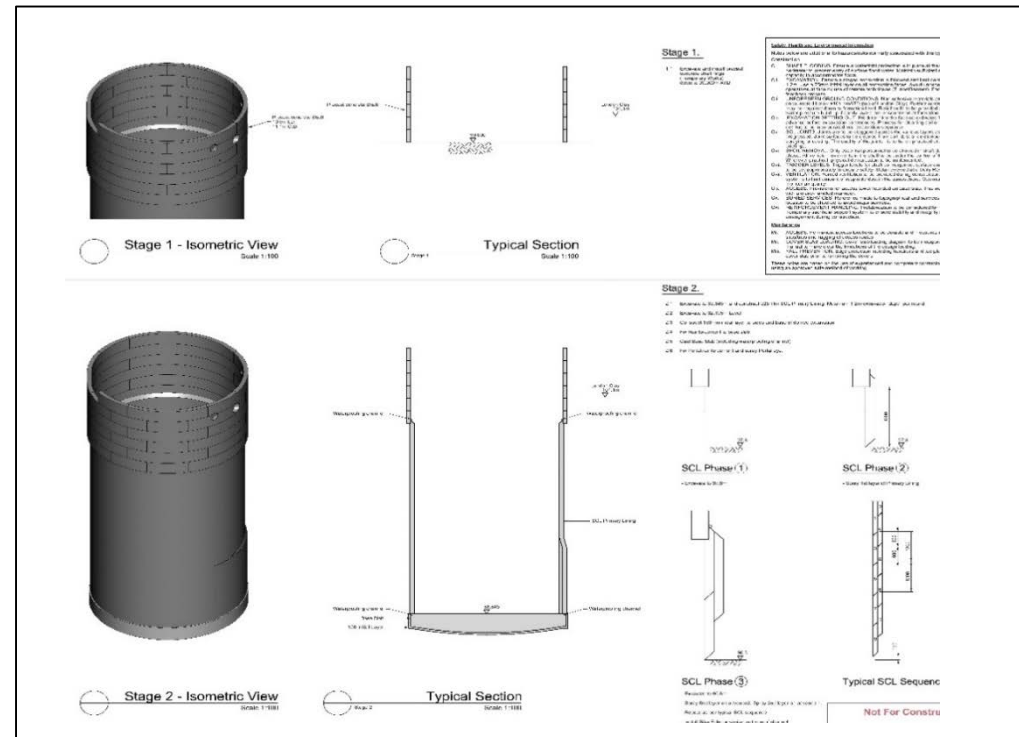
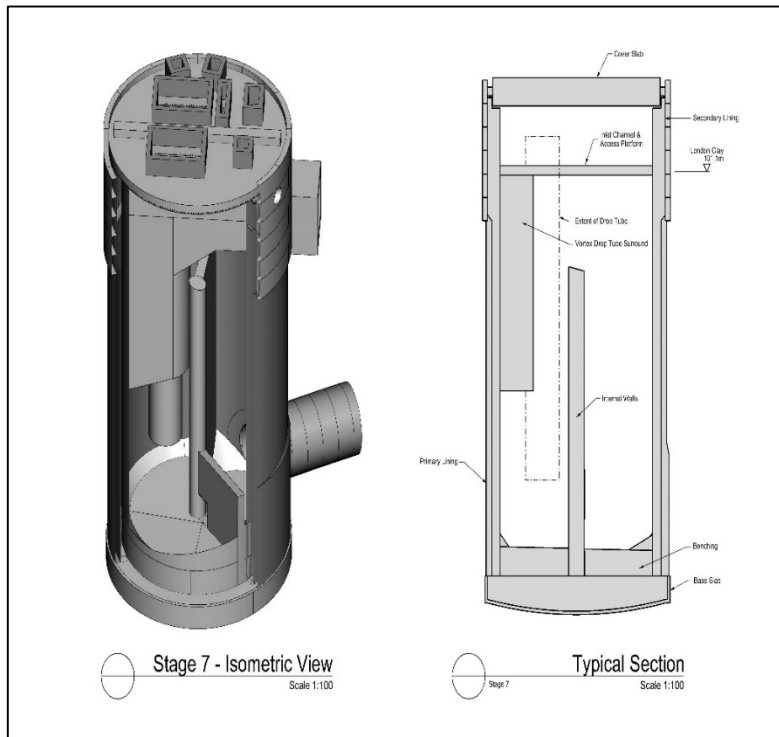


Typical Section  
Scale 1:100

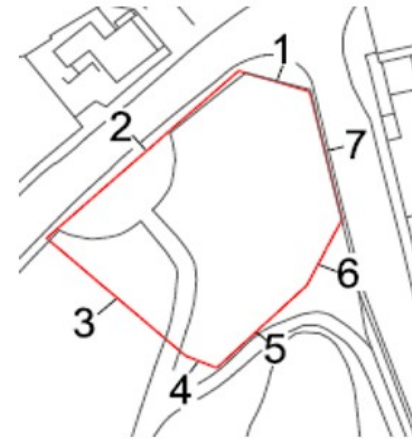
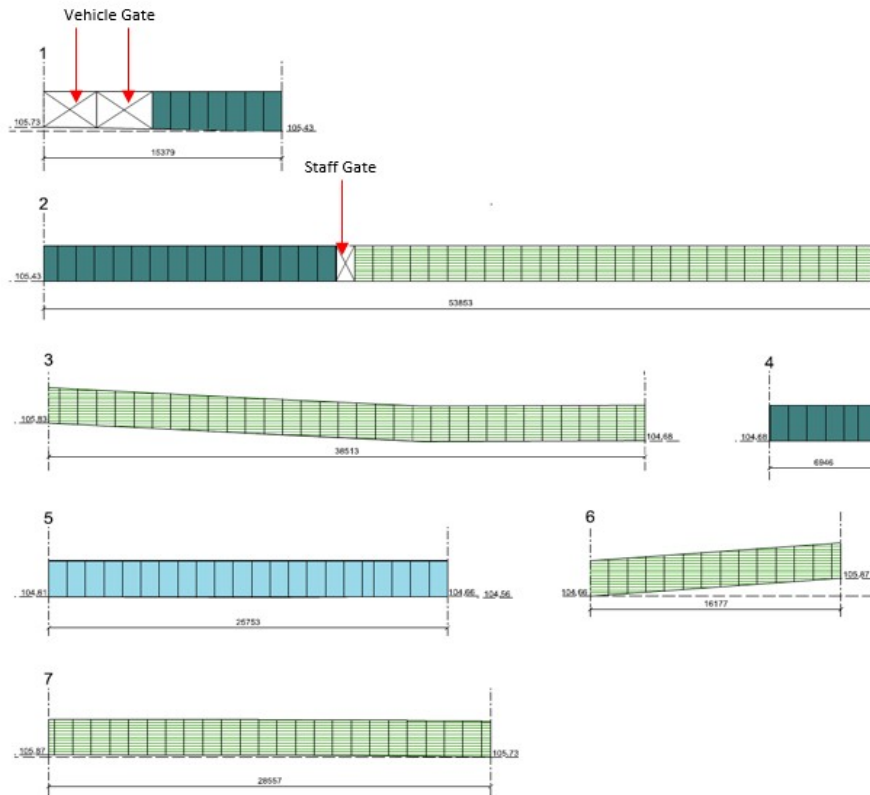


# King George's Park – Shaft Construction Method

- Excavate to depth of first ring, install first ring of segments & cast concrete collar
- Excavate and install concrete segments to a depth of 6m from ground level
- Excavate and line shaft with Sprayed Concrete Lining (SCL) to a further depth of 21m below ground level
- Excavate the bottom of the shaft and cast base slab
- Portal Thickening on preparation for receiving Tunnel Boring Machine (TBM)
- Secondary Lining constructed from bottom up via Slip Form Construction



# Hoarding Update



## KEY

- Commissioned Artwork Developed with the Community
- Urban Camouflage & Signage
- Planted Hoarding
- Gate

- Artwork application submitted: 24 May 2018
- Expected decision date: 20 July 2018
- Expected Installation planned for September 2018

# Landscaping

- Under DCO Schedule 3 requirement - Tideway/BMB to submit an application covering details of all landscaping design associated with all permanent above ground structures to the local planning authority. **Approx. September 2018**
- These must be in accordance with the Indicative Landscaping Plan and the 15 design principles.
- Key items to be covered within this application (KNGGP6) include, hard/soft landscaping materials, finished ground levels, minor structures (furniture, signs, lighting etc), details of trees to be retained.
- This application will be submitted in accordance with the procedures stated within Schedule 17 of the DCO and include a 4 week pre application period and an 8 week formal application period. **Pre application discussions with LBW - ongoing**
- Both of these application periods will include opportunities for public consultation.





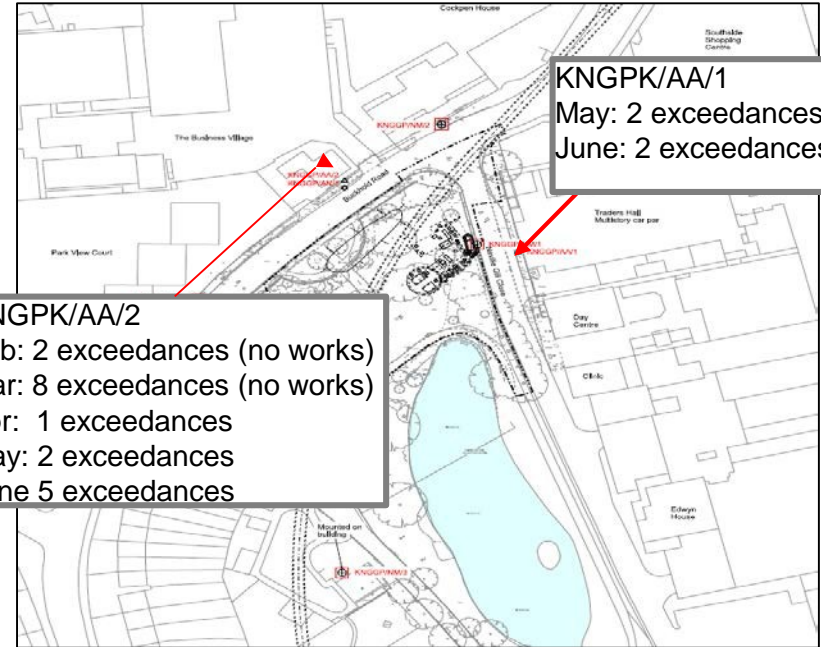
# King Georges Park- Site Plan with Air Quality and Noise Monitor locations



Noise Monitor



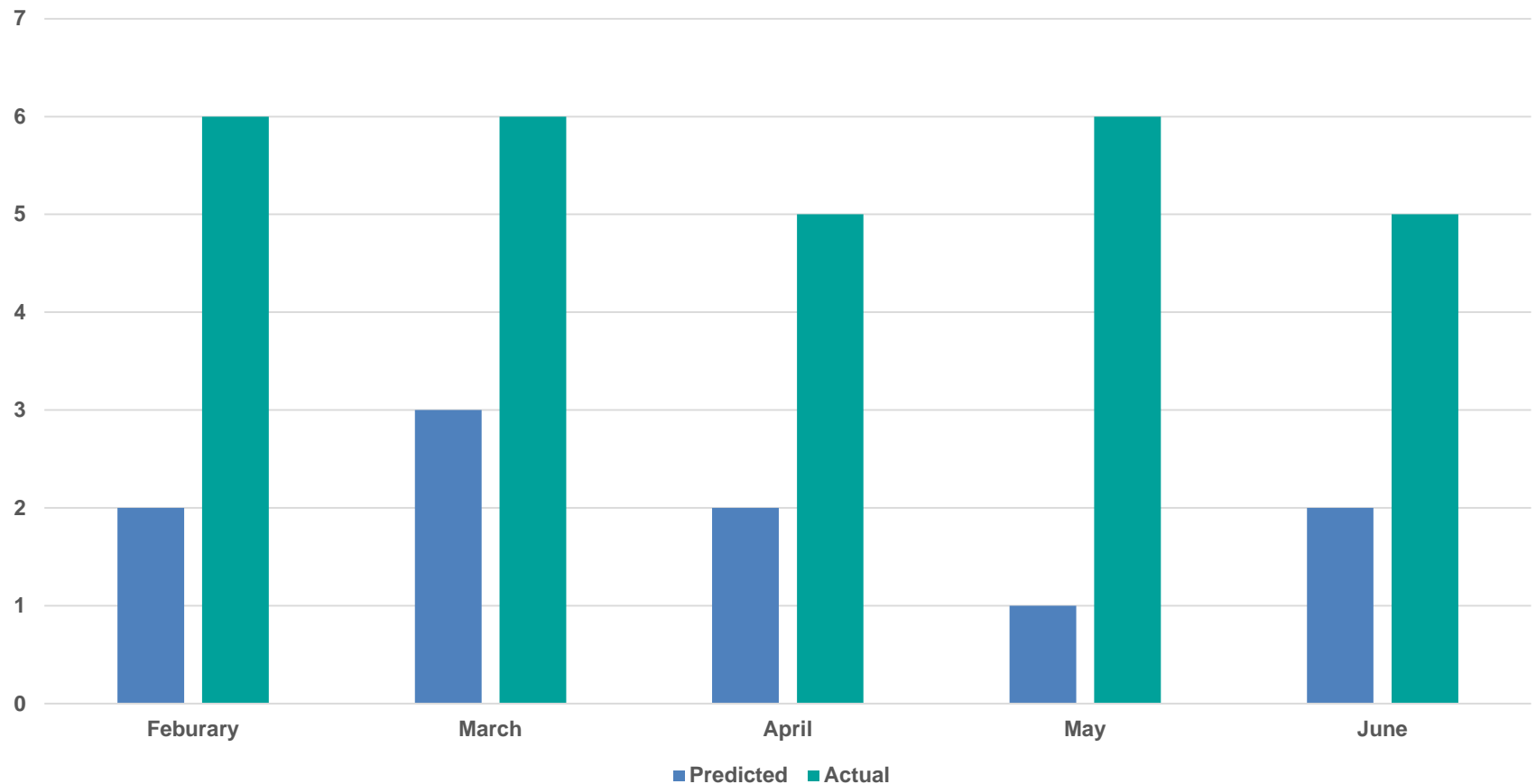
Air Quality Monitor



- No exceedance of the DCO set noise level of 75db
- “Exceedance’ refers to PM10 concentrations in excess of Mayor of London recommended alert level of 250µg/m3 (as a 15 minute mean).

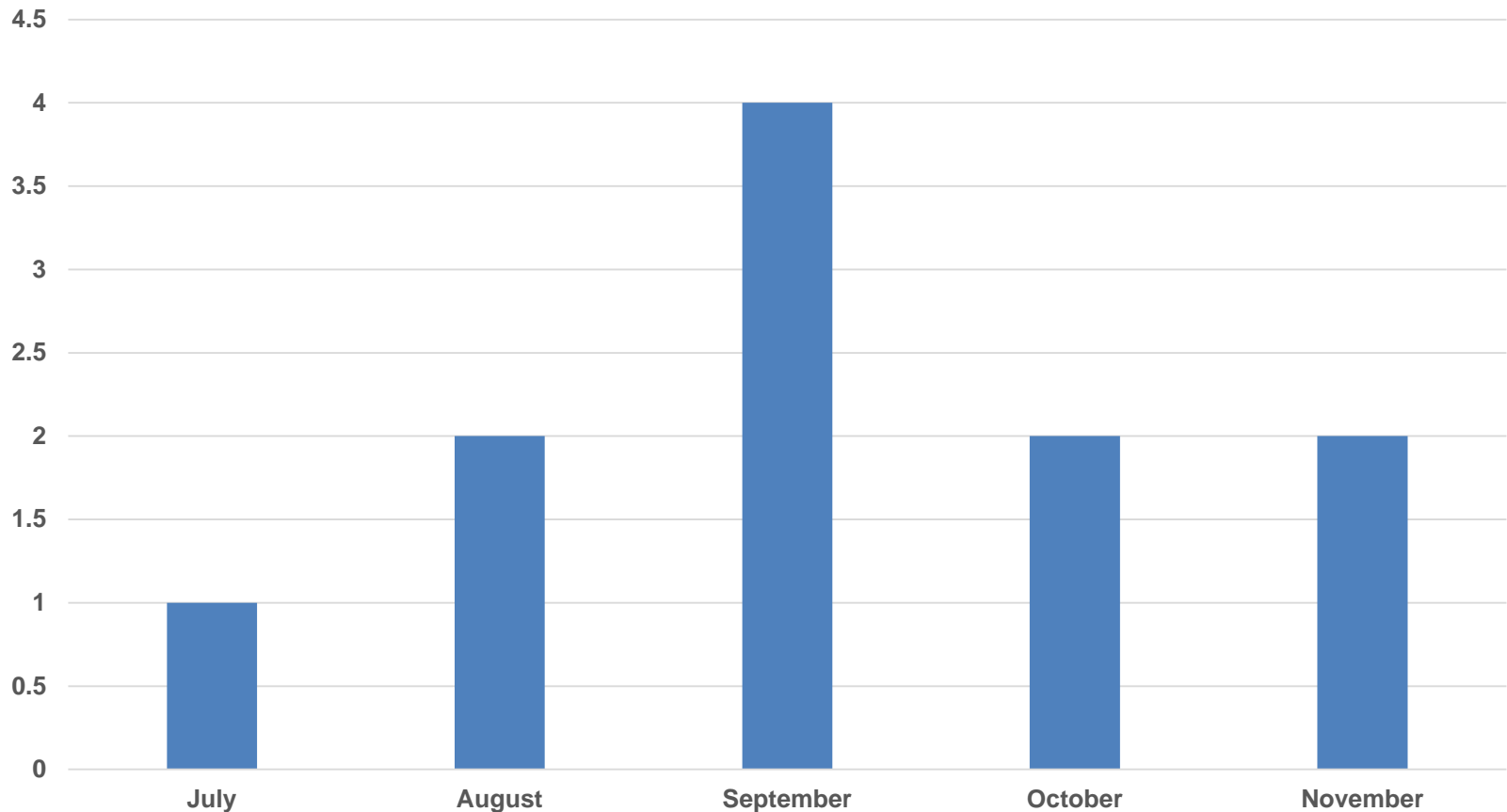
# Predicted and Actual Heavy Goods Vehicles (HGVs) coming into site: February – June 2018

Predicted and Actual Heavy Goods Vehicle (HGVs) coming into site February - June 2018



# Predicted Heavy Goods Vehicles (HGVs) coming into site: July to November 2018

Predicted Heavy Goods Vehicles (HGVs) coming into site July - November 2018





# COMMUNITY ENGAGEMENT

# Community Engagement and Complaints

- **Dormay Street** – 3 Information Sheets sent out since last meeting
- **King George's Park** – 3 Information Sheets sent out since last meeting
  
- No complaints/ enquires received for Dormay Street
- King George's Park received:
  - **3 requests was for more information on the project and timeline** – updates and Information given to residents
  - **1 query was made regarding a generator noise** – Advised resident that the generators in place are acoustically attenuated to reduce noise disturbance within the local community
  - **1 query was made regarding the whereabouts of the John Young Memorial bench** – Advised resident that the John Young Memorial bench was removed and stored by the London Borough of Wandsworth council prior to us starting works
  - **3 queries were in regards to the low water level and potential danger to wide life in the pond** – Advised callers that we have carried out investigations and confirmed that our works have not affected the pond. LBW are aware of the issues and have conducted water level and water quality testing – No concerns found by LBW.

All other enquiries have been responded to within 24 hours (where possible)

# Most recent community investments

## Riversdale Primary School

“I just wanted to write to thank the Dormay Street and King George’s Park team who have completed painting our fire escape and done an amazing job.

This was part of their community work based on the tunnel going through King George’s park.

The work they have done will make a real difference to all the children and staff at our school and we couldn’t be happier”.

Amy Roberts  
Head Teacher  
Riversdale Primary School





# Tideway Volunteering

Click the link to watch our volunteering video:

<https://www.youtube.com/watch?v=RfwMNqfum3Y&t=13s>

# HOW TO MAKE A CLAIM IF YOU ARE AFFECTED BY TIDEWAY'S WORK

## Who do I go to for advice?

- Independent Advisory Service (IAS) Helpline for independent advice: **0800 917 8845** or [info@tidewayias.co.uk](mailto:info@tidewayias.co.uk)
- Tideway's Compensation Officer, **Louise Davis**, for personal assistance and advice: via Tideway Helpdesk **08000 30 80 80** or [helpdesk@tideway.london](mailto:helpdesk@tideway.london) or direct **07971 077165** or [louise.davis@tideway.london](mailto:louise.davis@tideway.london)

## How do I submit my claim?

- Louise can submit your claim to the Independent Compensation Panel (ICP) on your behalf, or
- You can submit your claim direct to the ICP: [admin@tidewayicp.london](mailto:admin@tidewayicp.london)
- The IAS can send you a claim form, or you can download a claim form off [the Tideway website: www.tideway.london/help-advice/compensation-information/Independent-Compensation-Panel](http://www.tideway.london/help-advice/compensation-information/Independent-Compensation-Panel)

**QUESTIONS?**