



Tideway

Deptford Church Street & Greenwich Pumping Station

Community Liaison Working Group

Tuesday 15 January 2019

Staff

Tideway

- **Andy Sefton** Senior Project Manager Greenwich
- **Gareth Howells** Project Manager Greenwich
- **Rebecca Major** Communications Officer

CVB

- **Ba Dan Nguyen** Deptford Construction Manager
- **Cedric Neulat** Greenwich Project Manager
- **Ian Bentley** Phoenix Wharf Site Agent
- **Martin Griffiths** Senior Community Relations Manager
- **Heather Nickson** Environmental Adviser
- **Dave Richmond** Logistics Manager

CONTENTS

- **Deptford Update**
 - **Upcoming works**
 - **Traffic contraflow**
 - **Noise and Vibration**
- **Community Relations & Legacy**
- **Greenwich Update**
 - **Upcoming works**
 - **Noise and Vibration**

Greenwich Pumping Station



- 1 Acton Storm Tanks
- 2 Homerton Pumping Station
- 3 Brixton
- 4 Putney Embankment Foreshore
- 5 Derry Street
- 6 King George's Park
- 7 Carnarvon Road Riverside
- 8 Falconbrook Pumping Station

- 9 Geonoma Wharf Depot
- 10 Orlebar Embankment Foreshore
- 11 Entling Street
- 12 Heathwall Pumping Station
- 13 Albert Embankment Foreshore
- 14 Victoria Embankment Foreshore
- 15 Bluefriars Bridge Foreshore
- 16 Shad Thames Pumping Station

- 17 Chambers Wharf
- 18 East Pumping Station
- 19 Deptford Church Street
- 20 Greenwich Pumping Station
- 21 King Edward Memorial Park Foreshore
- 22 Becketbourne Street
- 23 Abbey Mills Pumping Station
- 24 Beckton Sewage Treatment Works

Site types

- 17 Main tunnel drive site
- 18 Main tunnel reception site
- 19 CSO site
- 20 Short connection tunnel drive site
- 21 Long connection tunnel drive site
- 22 System modifications
- Main tunnel
- Connection tunnels
- Site Tunnel (under construction)

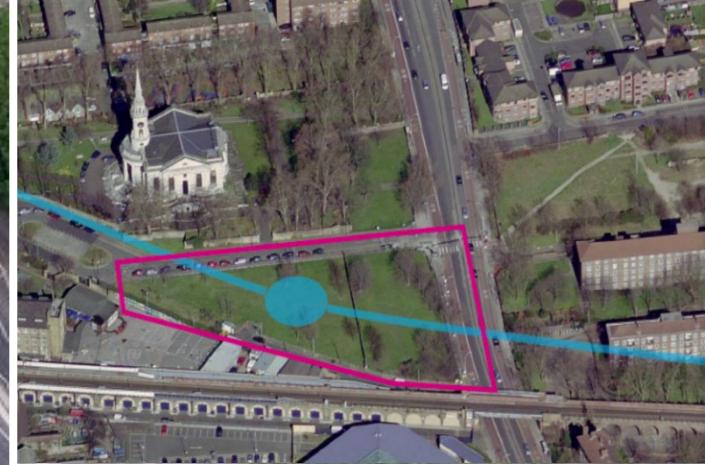
Deptford Church Street (DEPCS)



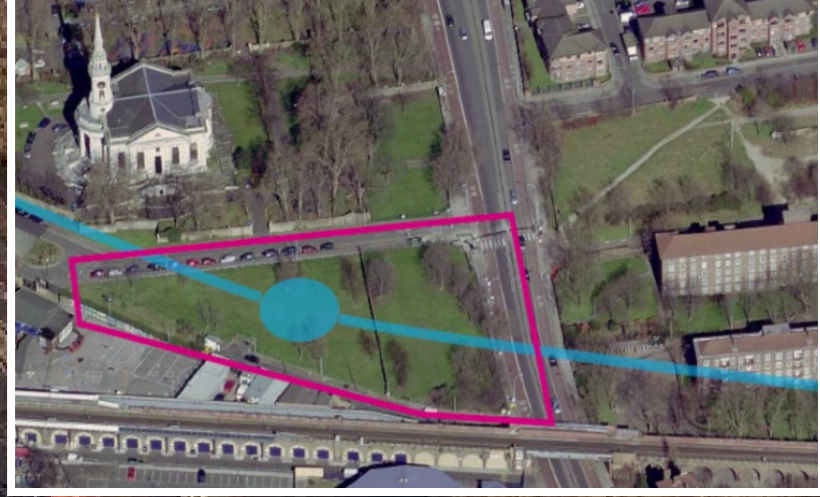
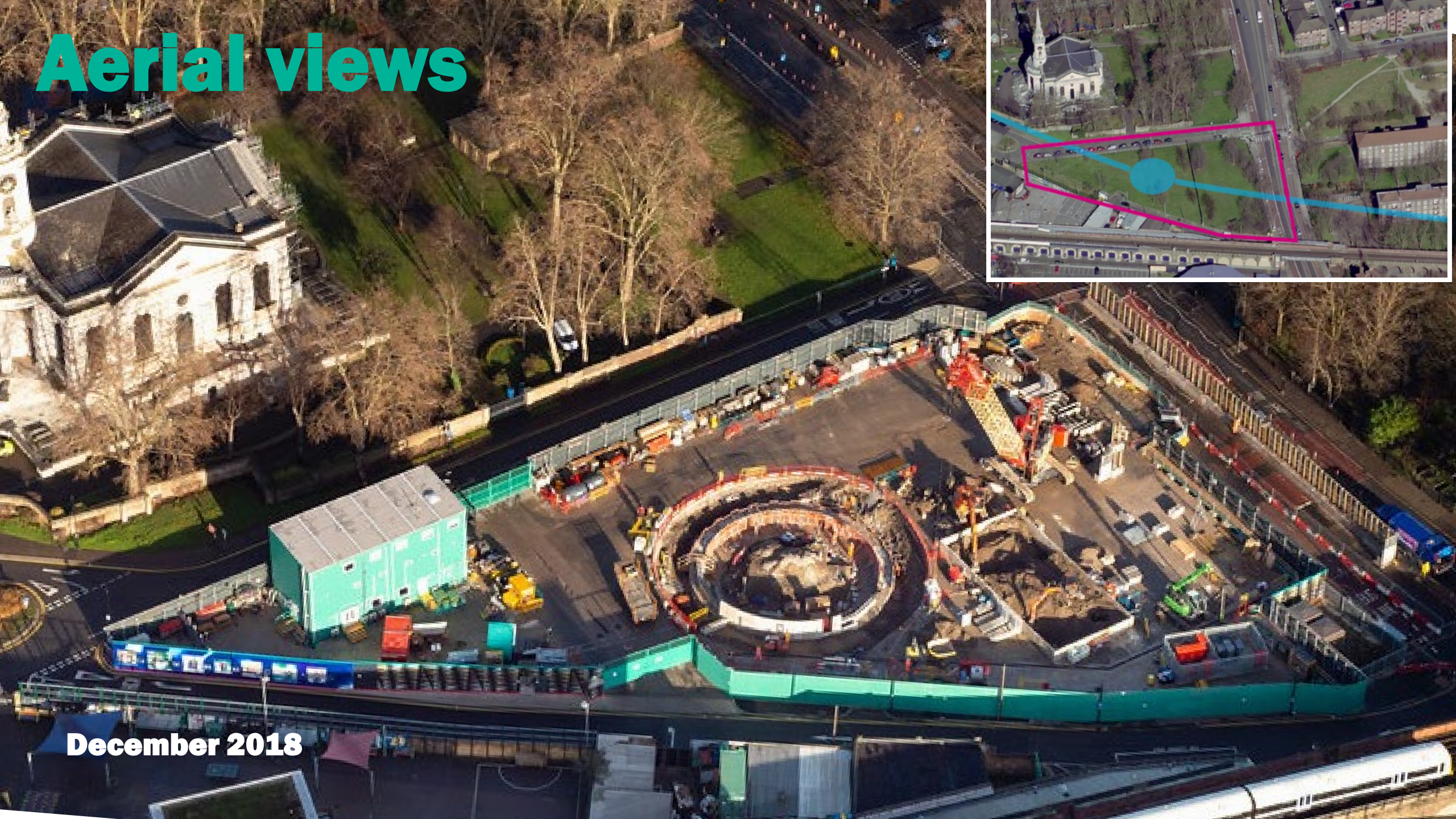
Aerial views



June 2018



Aerial views



December 2018

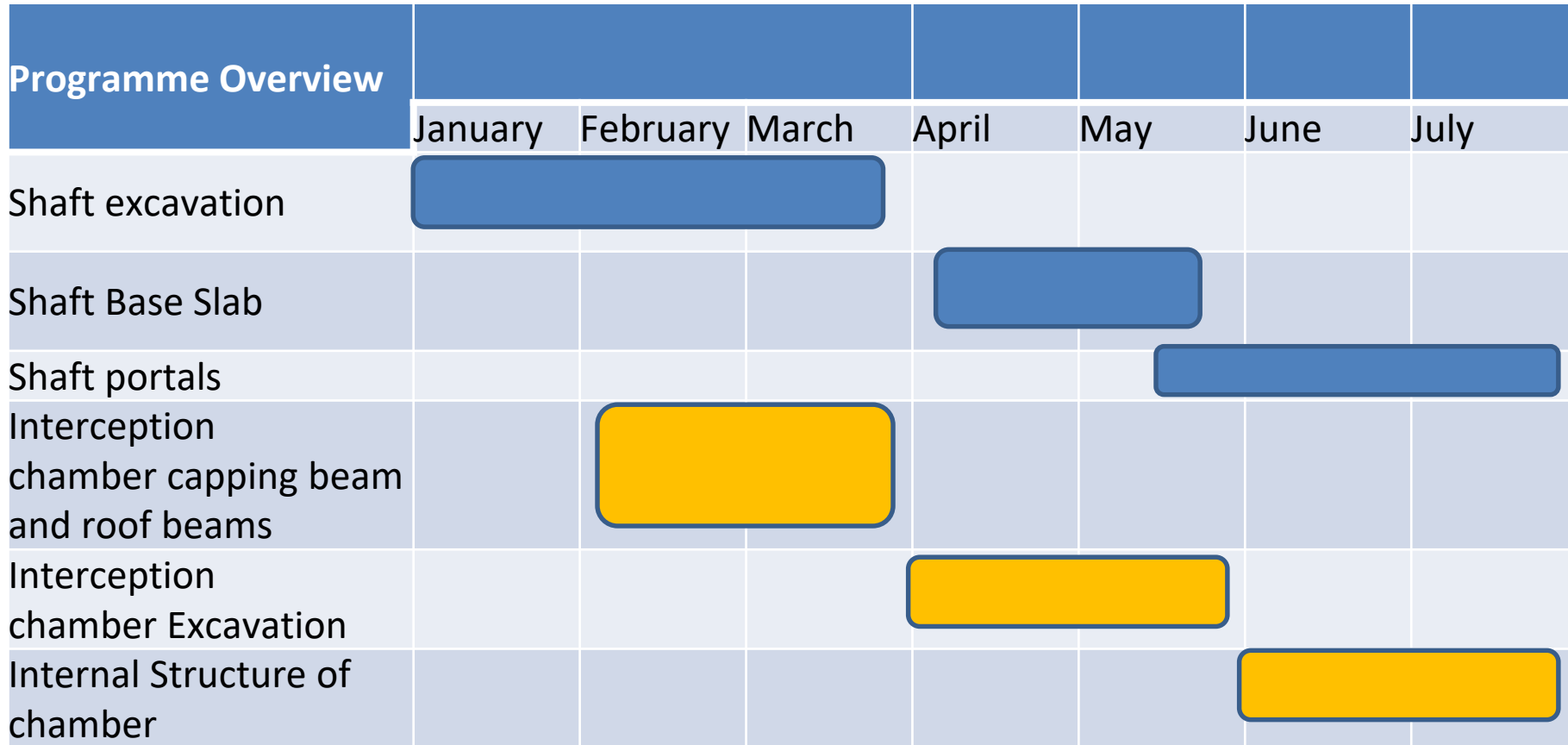


December 2018

Deptford - Works Update

- **Finished capping beam at top of shaft**
 - This a reinforced concrete structure forming its new perimeter
- **Install capping beam for the interception chamber**
 - followed by excavation to a depth of 15 metres
- **Begun shaft excavation and removal of spoil**
 - using excavators to a depth of 50 metres.
- **Hoarding installed on Deptford Church Street and traffic contraflow in operation**

Deptford - The next 6 months

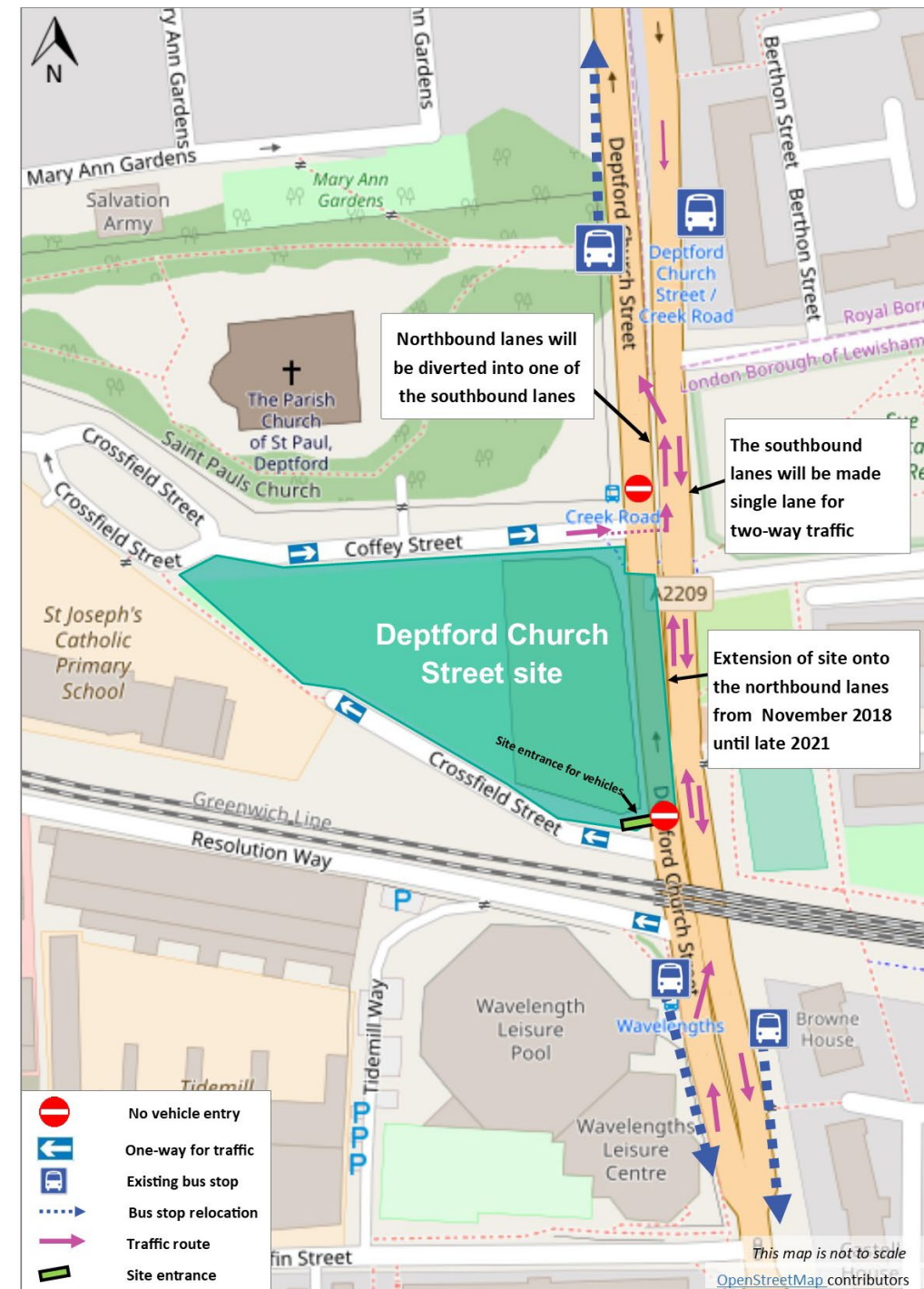


Working Hours	Standard	Extended
Monday – Friday	08:00 – 18:00	Until 22:00
Saturday	08:00 – 13:00	Until 17:00

1 hour allowed before & after for mobilization

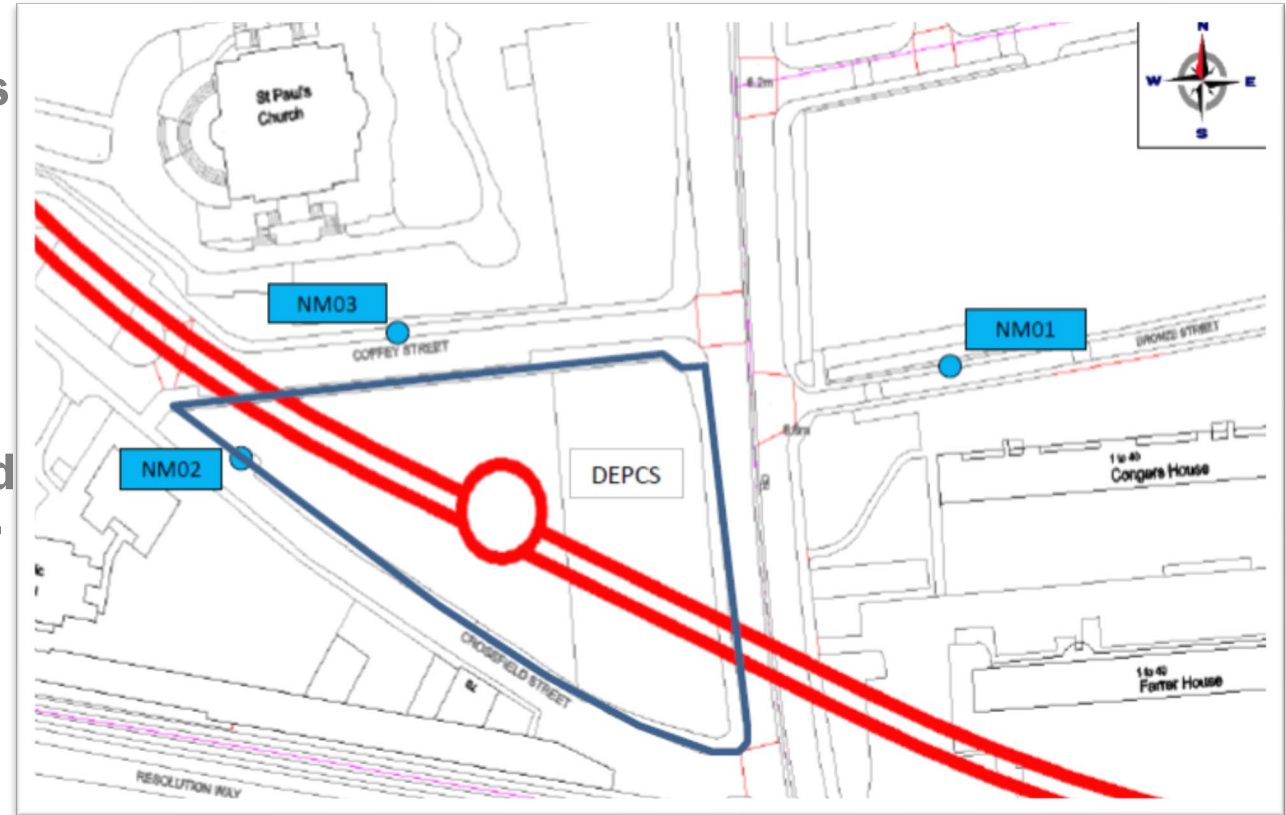
Deptford Church Street traffic contraflow

- Extension of worksite onto northbound lanes until late 2021
- Northbound lanes diverted into one of the southbound lanes
- Southbound lanes therefore have two-way traffic
- Resolution Way one-way traffic route reversed



Noise – DEPCS (September to December 2018)

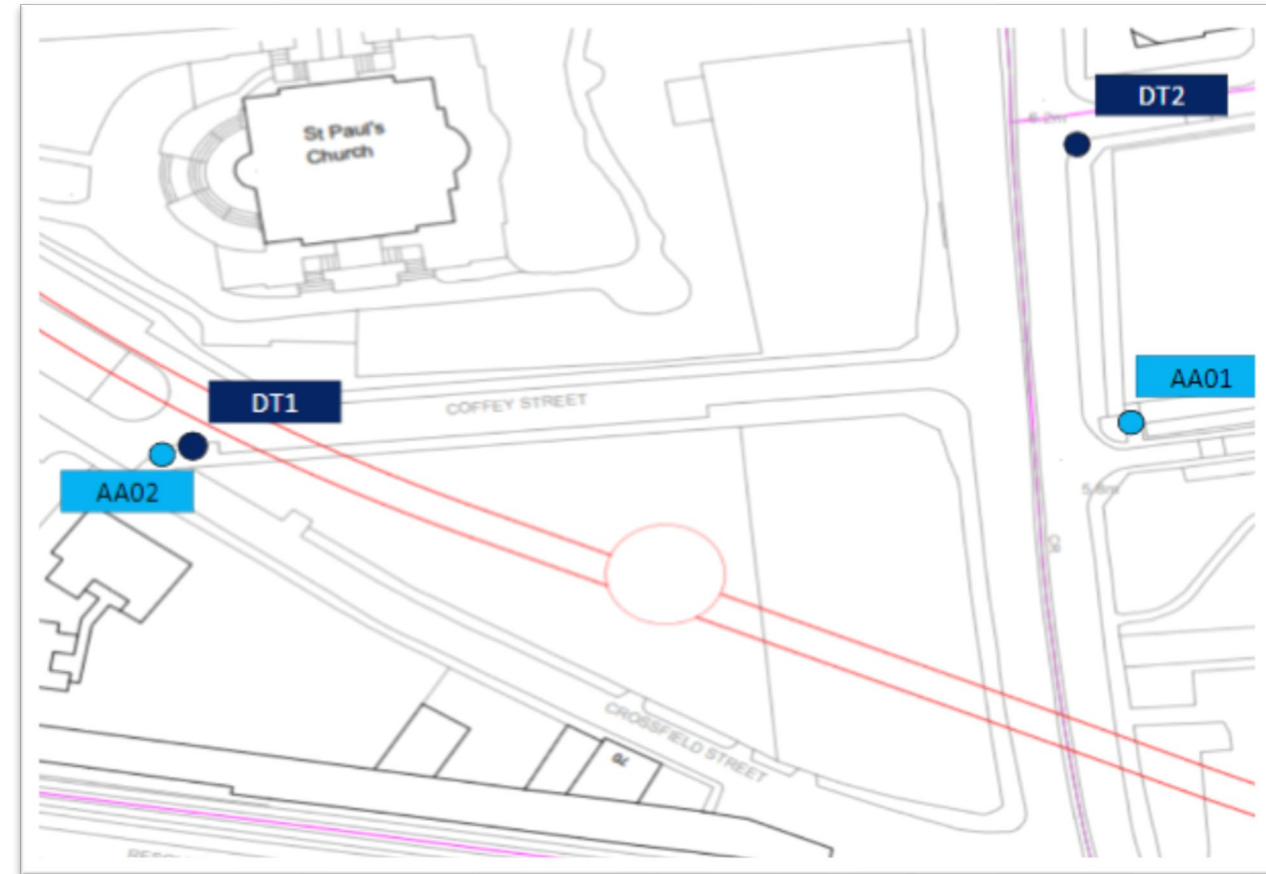
- ❖ No Section 61 exceedances due to CVB works
- ❖ 4 TAPs triggers in the last 6 months due to CVB works at residential receptor monitor NM01 (Bronze St)
- ❖ This TAPs trigger level should not be exceeded more than 10 times in 15 consecutive days or 40 times in any 6 month period



Noise monitoring locations

Air quality – DEPCS (August to November 2018)

- ❖ No exceedances for the 24hour PM10 Alert
- ❖ There was a moderate PM10 and PM2.5 particulate pollution incident notification for 22nd & 23rd November recorded by the London Air Quality Network (LAQN)
- ❖ There were no other reported moderate or high particulate episodes recorded by the LAQN for August, September or October.
- ❖ From 01/08/2018 to 31/10/2018 diffusion tube results were below UK long-term Air Quality Objective annual average for NO₂ µg/m³



Air Quality monitoring locations for particulate monitoring (PM10) (AA)
Passive NO₂ monitoring using diffusion tubes (DT)

Community Relations across Tideway East

Royal Guest at Abbey Mills Pumping Station

The Princess Royal visited the 'Cathedral of Sewage' to learn about our Victorian sewers and Tideway's plan to vastly reduce the amount of untreated sewage which flows into the River Thames



Princess Anne meeting
Tideway staff

Items donated by staff for Deptford Reach



CHRISTMAS COLLECTIONS

Deptford Reach

Drop-in centre to help people rebuild lives affected by homelessness, mental illness, drug or alcohol abuse and social exclusion. Support more than 80 people each weekday through a programme of courses, workshops, activities and advice.

www.deptfordreach.org.uk

“Thank you so much, this means that they will all get an individual present on Christmas Day to unwrap, which will mean a lot to them.” Jordan from Deptford Reach.



Centre users, Charlie and David receiving the gifts

Staff Christmas Jumper Day benefitted three London Charities:

- **Drive Forward Foundation** – supporting people leaving care
- **SHP** – preventing homelessness & promoting social inclusion
- **South London Cares** - reducing isolation amongst older people and young professionals



Monthly Food Collection by Deptford Church Street Site

The Trussell Trust provides a lifeline through their 420 foodbanks, 4 of which are in Lewisham.

Tideway staff at Deptford Church Street site thought it would be a worthy cause to support.

In 2017 - 2018 the Trust provided over 1.3 million food parcels, 4,850 of which were provided within Lewisham.

In December we donated to a foodbank at St. James Church in New Cross, a mile away from the Deptford site.

Site staff have decided to carry on with monthly donations in 2019.



National Tree Week November 2018

- CVB & Tideway teamed up with local community voluntary group, Deptford Folk, to support their challenge to plant 200 trees in celebration of the first publication of John Evelyn's diaries 200 years ago
- We have funded trees and will be working with the community group in collaboration with LB Lewisham in planting and educating local schoolchildren and groups.
- Twenty trees were planted with the help of the local community in Pepys Park to mark National Tree Week.
- John Evelyn was a 17th century diarist who wrote about trees, air quality, urban design and horticulture.



Greenwich Pumping Station (GREPS)

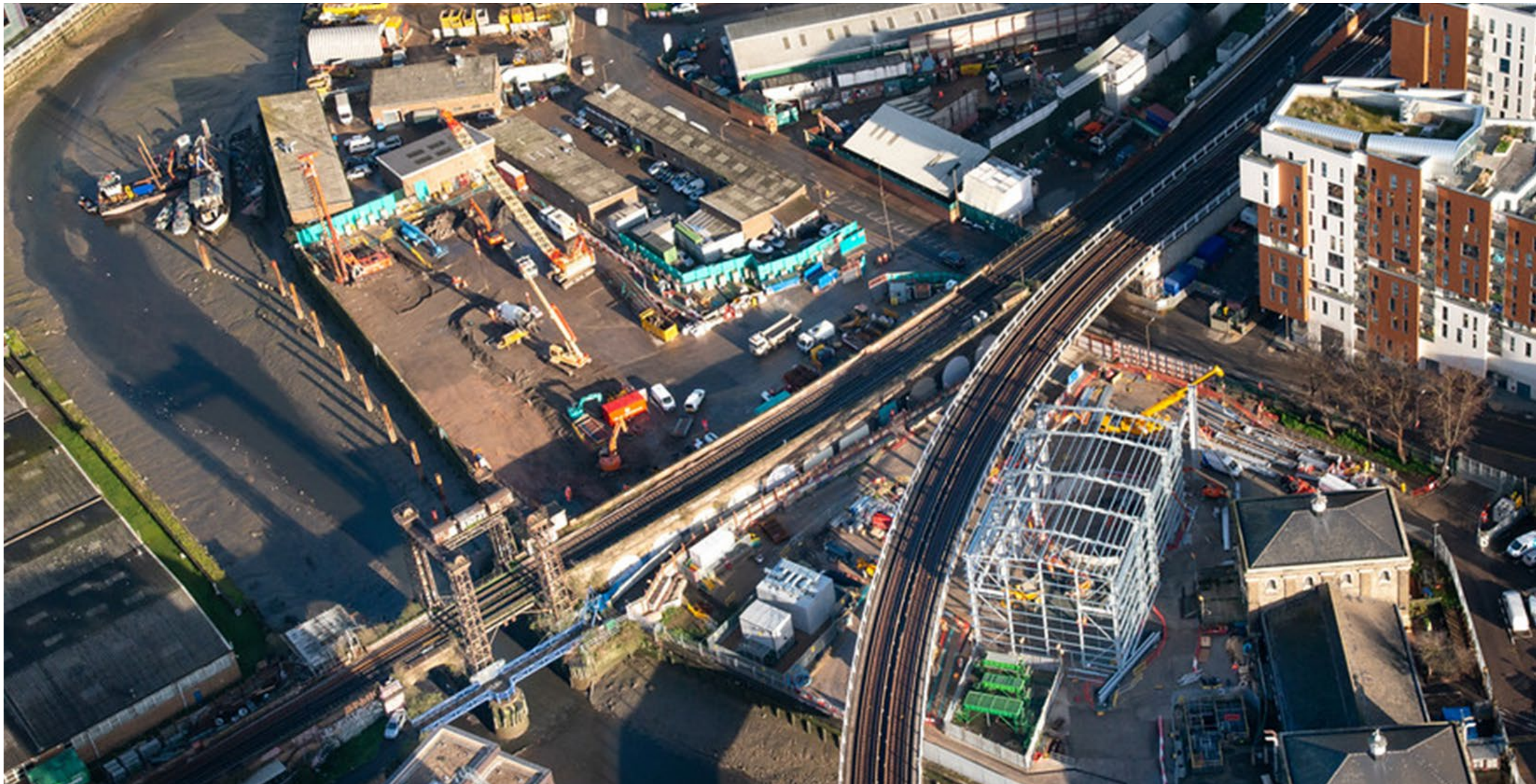
2018 Progress

2019 Look Ahead



Tideway

GREPS – December 2018



GREPS – May 2018



Diaphragm Wall Complete

GREPS – December 2018



GREPS – December 2018

**Shed
Steelwork
Complete**



GREPS – Phoenix Wharf - August 2018



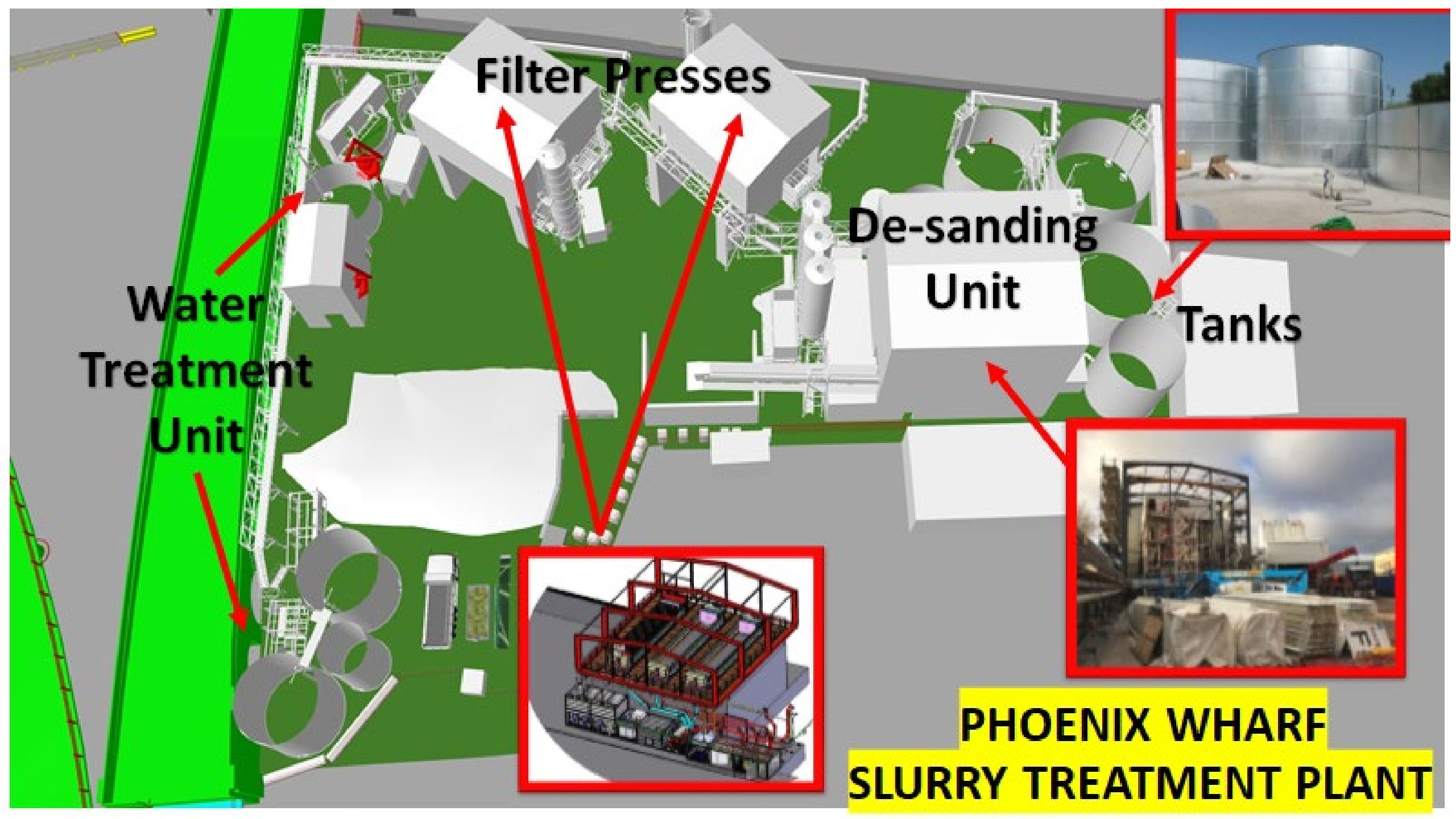
Marine Piling

GREPS – Phoenix Wharf - December 2018



**More
by River
Piling
Ongoing**





**PHOENIX WHARF
SLURRY TREATMENT PLANT**

Greenwich - The next 6 months

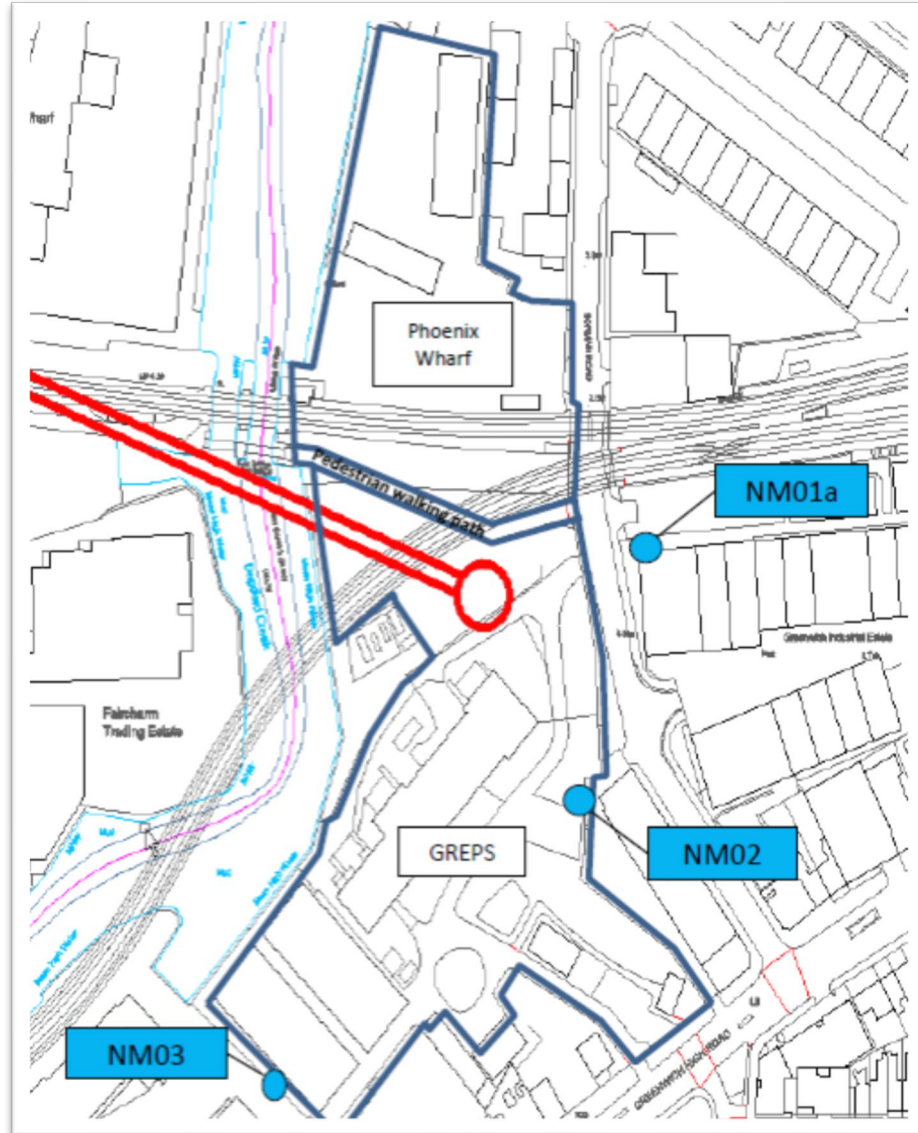
Programme Overview	2019					
	Jan	Feb	Mar	Apr	May	Jun
Acoustic Enclosure installation	■	■	■			
Shaft Excavation				■	■	
Shaft Base Slab construction				■	■	■
Phoenix Wharf More By River Piling	■	■				
Phoenix Wharf Muckbin Excavation		■	■	■	■	
Slurry Treatment Plant installation			■	■	■	■

Working Hours	Standard	Extended	Night	Continuous
Mon-Fri	08:00-18:00	18:00-22:00	22:00-07:00	00:00-00:00
Saturday	08:00-13:00	13:00-17:00	22:00-07:00	00:00-00:00
Sunday	-	-	22:00-07:00	00:00-00:00

1 hour allowed before & after for mobilization/demobilisation

Noise – GREPS (September to December 2018)

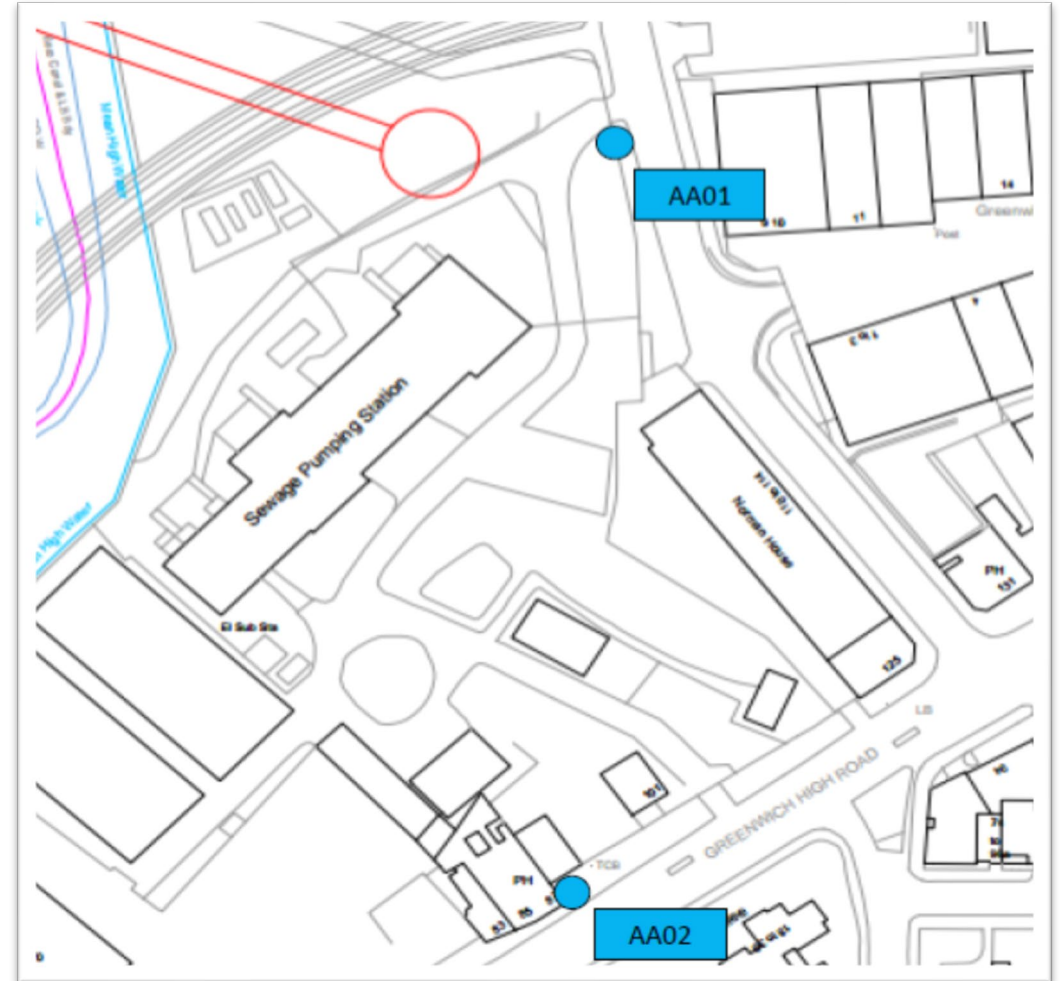
Noise monitoring locations



- ❖ No Section 61 exceedances due to CVB works
- ❖ 8 TAPs triggers in the last 6 months due to CVB works at residential receptor monitor NM01 and no TAPs triggers in the last 6 months due to CVB works at residential receptor monitor NM03
- ❖ This TAPs trigger level should not be exceeded more than 10 times in 15 consecutive days or 40 times in any 6 month period

Air quality – GREPS (August to November 2018)

- ❖ No exceedances for the 24hour PM₁₀ Alert
- ❖ There was a moderate PM₁₀ and PM_{2.5} particulate pollution incident notification for 22nd & 23rd November recorded by the London Air Quality Network (LAQN)
- ❖ There were no other reported moderate or high particulate episodes recorded by the LAQN for August, September, October & November



Air Quality monitoring locations for particulate monitoring (PM₁₀)

Vehicle Holding Area Mitigation Measures

Trial period

- Implement 3 month trial period and obtain public feedback prior to tunnelling phase.

Noise and air quality

- Code of conduct for drivers (*includes 20mph on Greenwich High Road and Greenwich South Street*)
- Limited hours of operation
- FORS accredited vehicles
- VHA appropriate width to mitigate congestion

Road safety

- Right hand turns
- FORs accredited (blind spot minimisation, health and fitness reviews etc)
- Daily assessment and monitoring of all fleet vehicles

Amenity

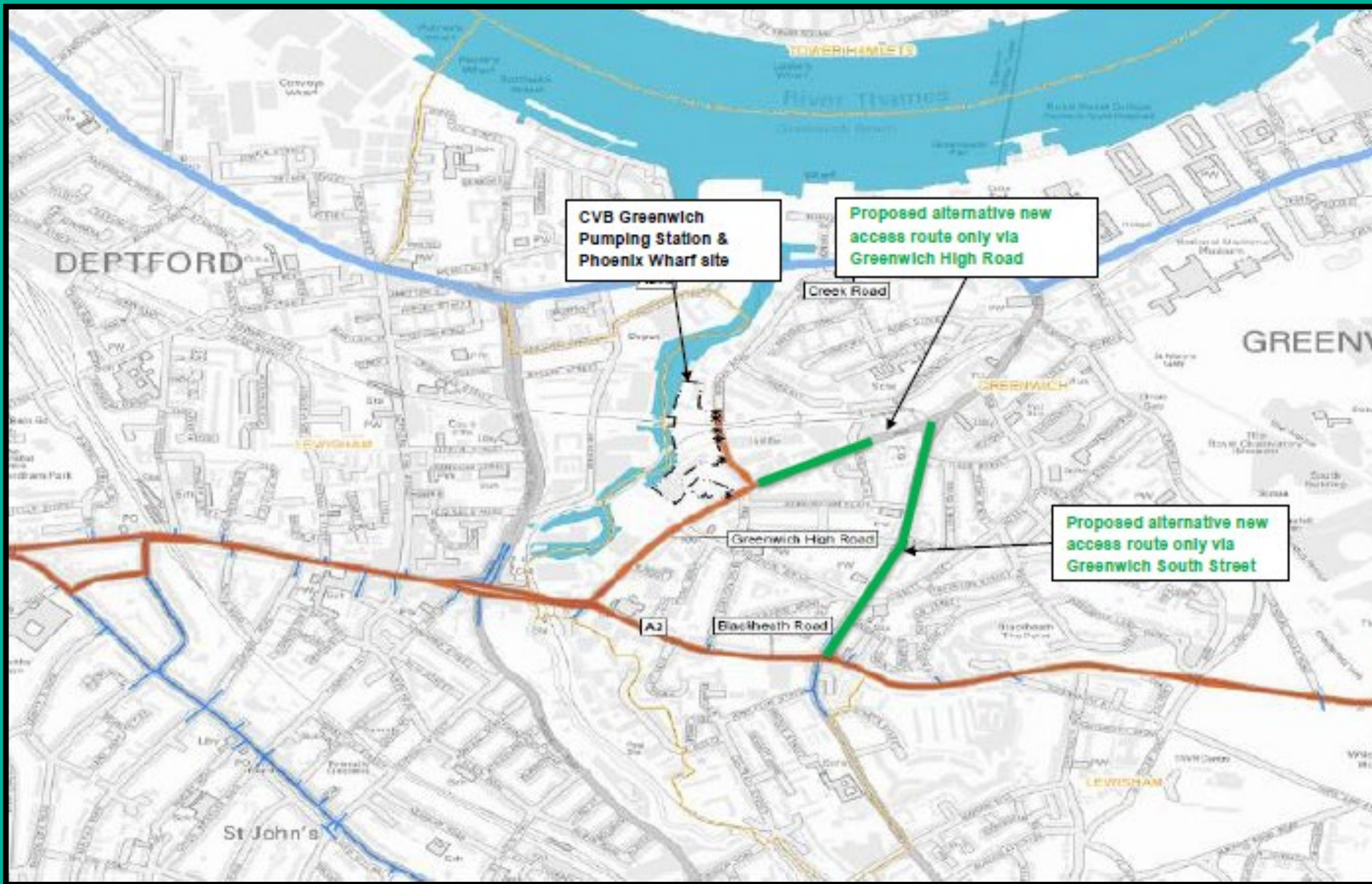
- Monitoring at VHA by traffic marshal
- Set back from residential flats by approximately 14 metres
- 'Rhino barriers' will not block light or visibility for residents

Communication

- Community Liaison Working Group meetings
- Noticeboards, Information sheets
- 24/7 Tideway Helpdesk
- Email distribution list
- Visits offered to discuss concerns

Monitoring

- **HGVs will display a Tideway Identifier logo**
- **Pre and post condition survey of the road undertaken before and after implementation of VHA**
- **Code of conduct for drivers undertaken in alignment with the Lo City driving scheme**
- **Check all vehicles compliant with Tideway Standards, recorded and reviewed in the monthly report**
- **Monthly report provided to Royal Borough of Greenwich**
- **Regular supervision of existing highway conditions and VHA in operation**



CVB Greenwich Pumping Station & Phoenix Wharf site

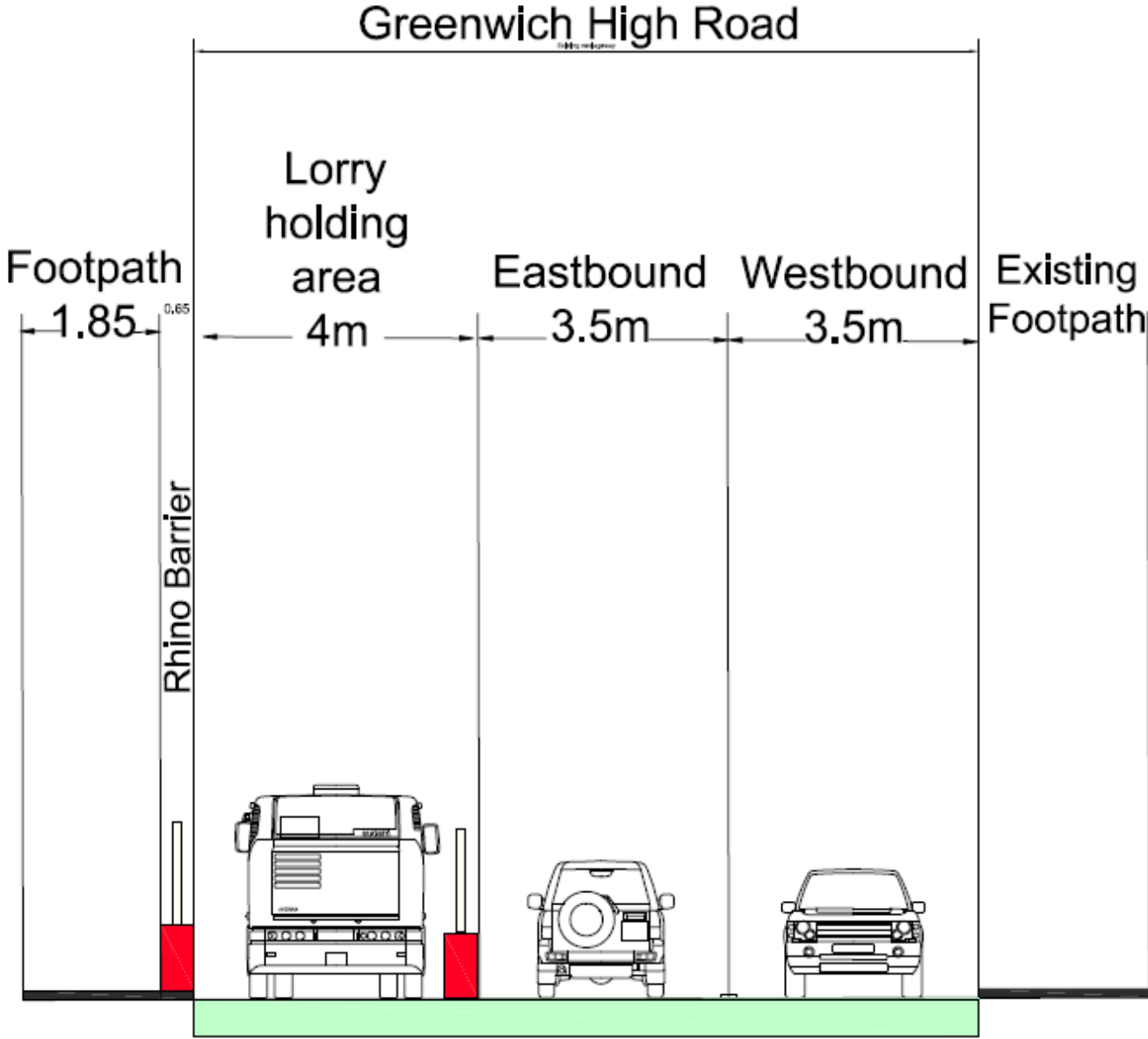
Proposed alternative new access route only via Greenwich High Road


Proposed alternative new access route only via Greenwich South Street


Greenwich Pumping Station & Phoenix Wharf via Greenwich South Street, Greenwich High Road

Proposed Alternative New Vehicle Access Route only

Vehicle Holding Area Cross section



Key

 Water filled barrier with high level fencing

Project THAMES TIDEWAY		Client Colin Starobury	Approved
Contract No. 1805		Checked	Date 18/05/16
Scale 1:500		Drawn by 1805/16	
CROSS SECTIONS LORRY HOLDING AREA GREENWICH HIGH ROAD			
CONSULTANTS ST HEARY WORKSHOPS TALK ONE CONSTRUCTION VALLEY OF GLAMISMAN 6791 73A TEL: 01454 832211		 	

**If you have any questions or enquiries
please contact the Tideway Helpdesk on:**

Telephone: 08000 308080

Email: Helpdesk@Tideway.London

THANK YOU

**Greenwich and Deptford Church Street
Community Liaison Working Group
15 January 2019**