



Tideway



**MORGAN
SINDALL**

Balfour Beatty

Dormay Street & King George's Park Community Liaison Working Group

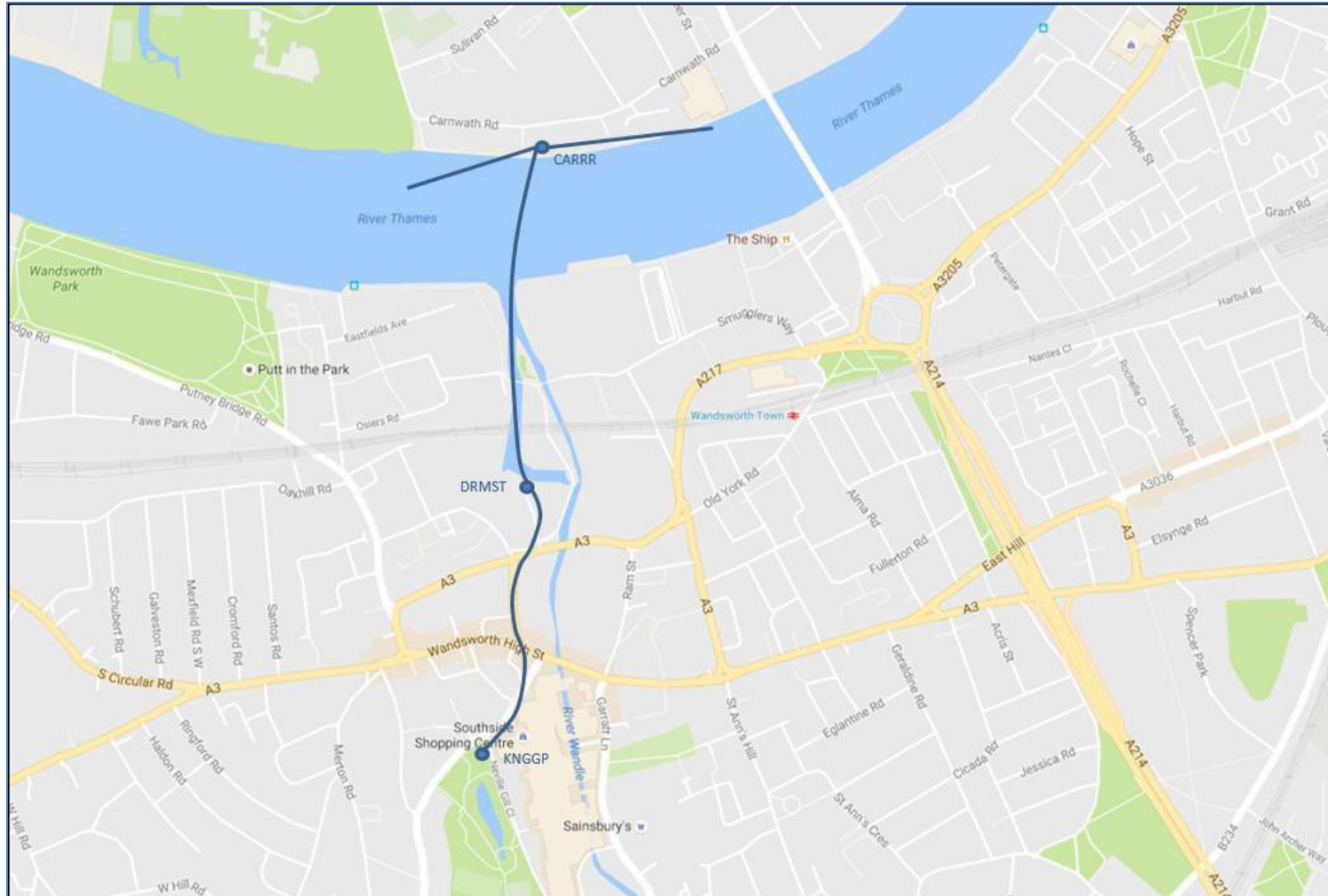
7 March 2019

DORMAY STREET



Kevin Dollard – Section Manager

Frogmore Connection Tunnel - Location



Works Update: SCL Shaft July 2018 – December 2018

- Sprayed Concrete Lining (SCL) drop shaft completed



Works Update: SCL Launch Chambers December 2018 – February 2019

- SCL 20m Launch Chambers to Carnwath Road and King George's Park complete



Works update: Lowering of Charlotte February 2019



Works update: Installation of Charlotte February 2019



Works update: Installation of Charlotte February 2019



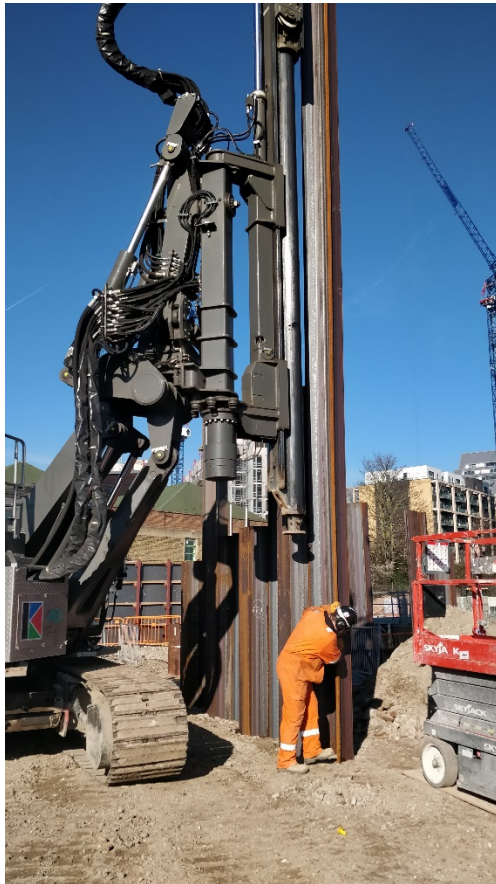
Works Update: CSO Interception September 2018 – January 2019

- Council Yard acquired in September 2018
- Vehicle Canopy demolished and site hoarding installed
- Site investigation works completed

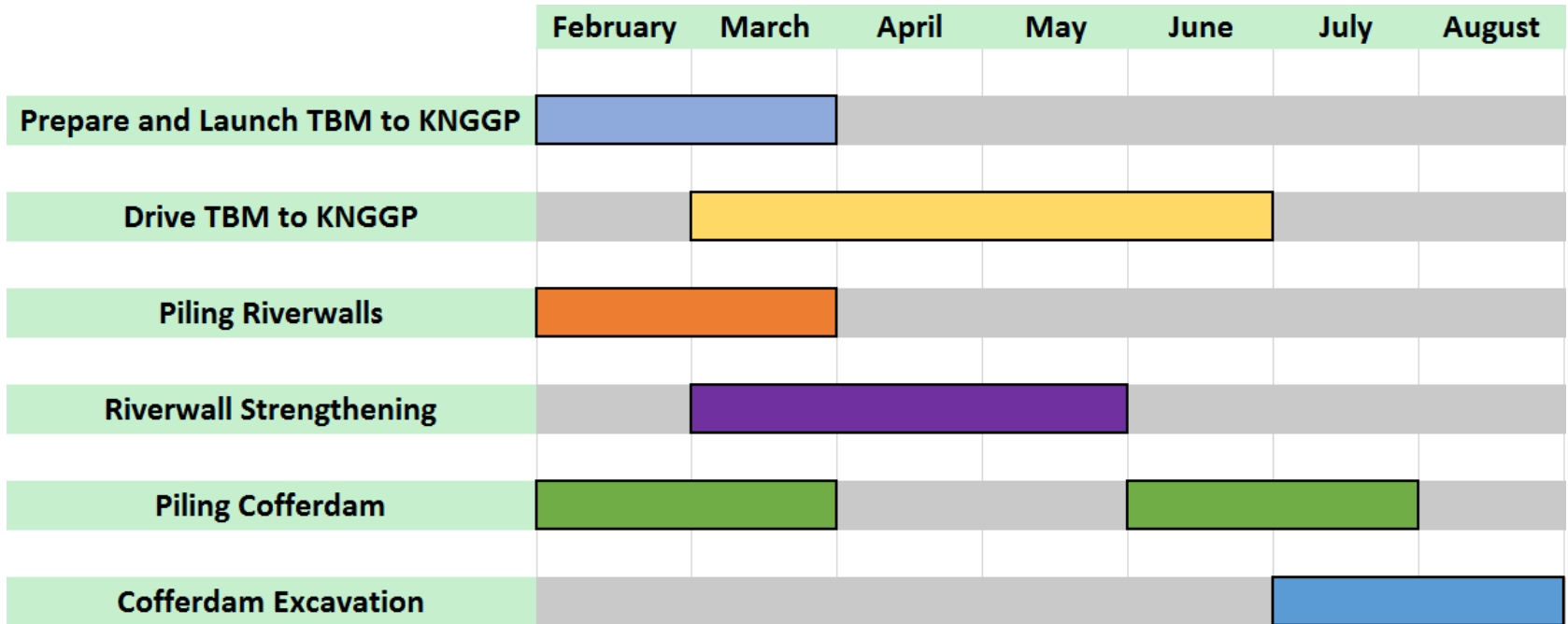


Works Update: CSO Interception February 2019

Piling works have started for river wall strengthening, the cofferdam and the Combined Sewer Overflow (CSO) Interception Chamber



Look Ahead (Next 6 Months)

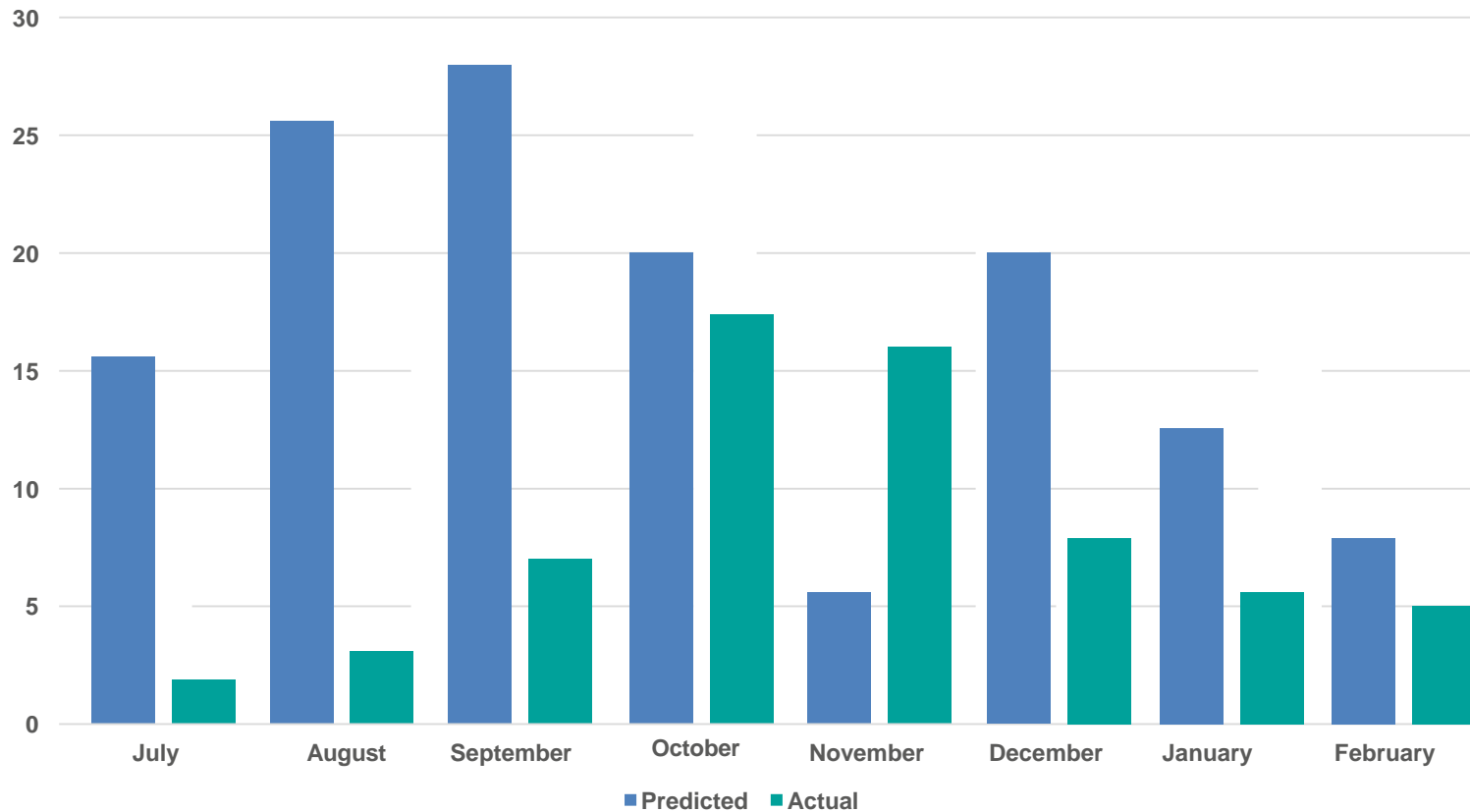


*Core working hours 8am-6pm Monday – Friday and 8am-1pm Saturday. One hour start up and shut down periods either side of working hours

* Certain works are located in the foreshore and construction activities must be undertaken at high tide. Any tidal working outside of standard working hours will be agreed with the local authority through a Section 61 consent, dispensation or variation and will be communicated to relevant stakeholders

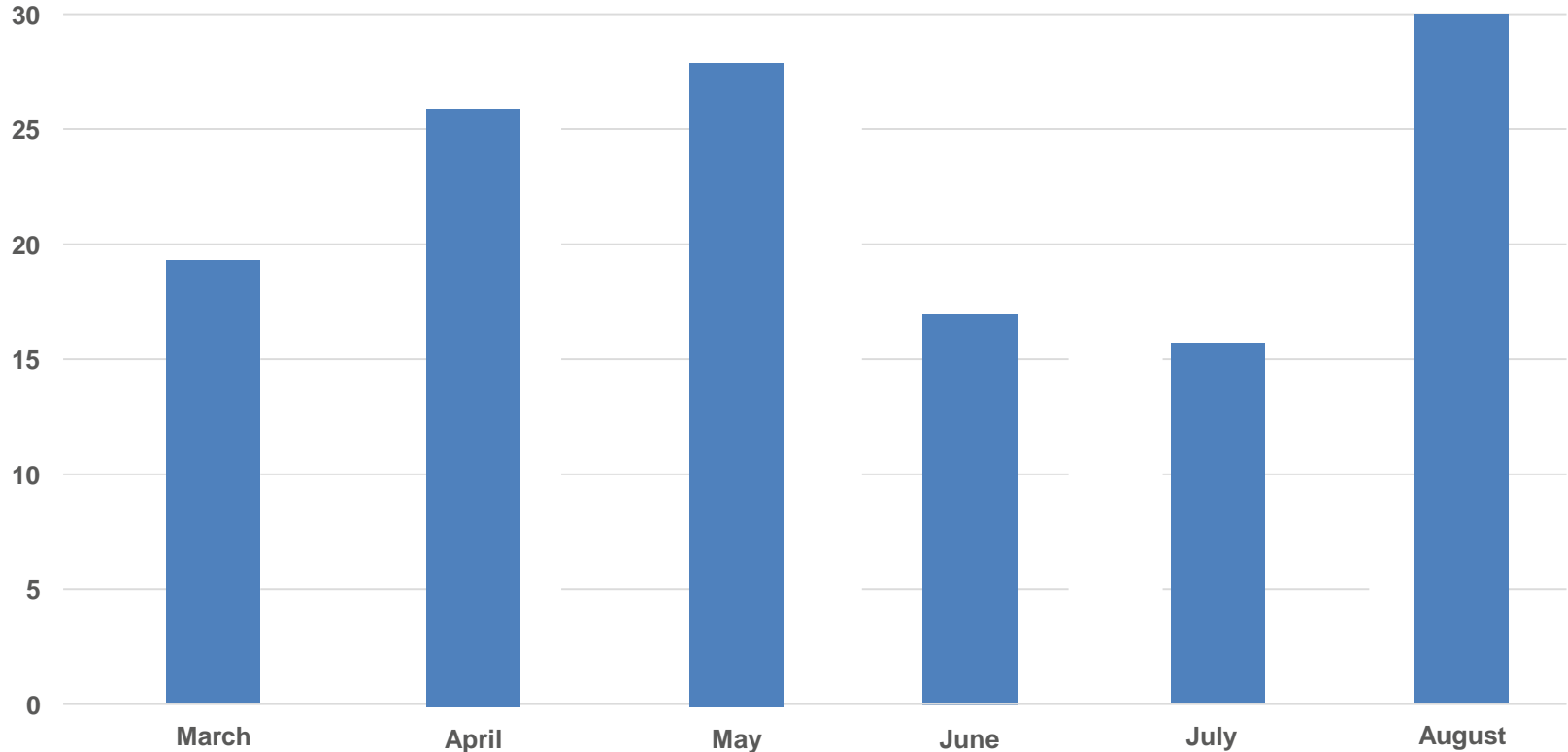
Predicted and Actual Heavy Goods Vehicles (HGVs) coming into site: July 2018 – February 2019

Predicted and Actual Heavy Goods Vehicle coming into site
(Monthly Daily Average) July 2018 – February 2019



Predicted Heavy Goods Vehicles (HGVs) coming into site: March to August 2019

Predicted Heavy Goods Vehicles (HGVs) coming into site
(Monthly Daily Average) July - November



QUESTIONS?

KING GEORGE'S PARK

Kevin Dollard – Section Manager



King George's Park July - August 2018

- Shaft sinking with underpinned rings



- Hoarding artwork installed



King George's Park September 2018

- Cofferdam frame installed
- Lined the sewer adjacent to site
- Prepared for removal of the Combined Sewer Overflow (CSO)



King George's Park October 2018

- Excavated to expose CSO
- Coring to install sheet piles for poor ground conditions during shaft sinking



King George's Park November 2018

- Installed flume
- Shaft sheet piles installed
- Final underpinned section of shaft constructed
- Sprayed concrete lining preparation



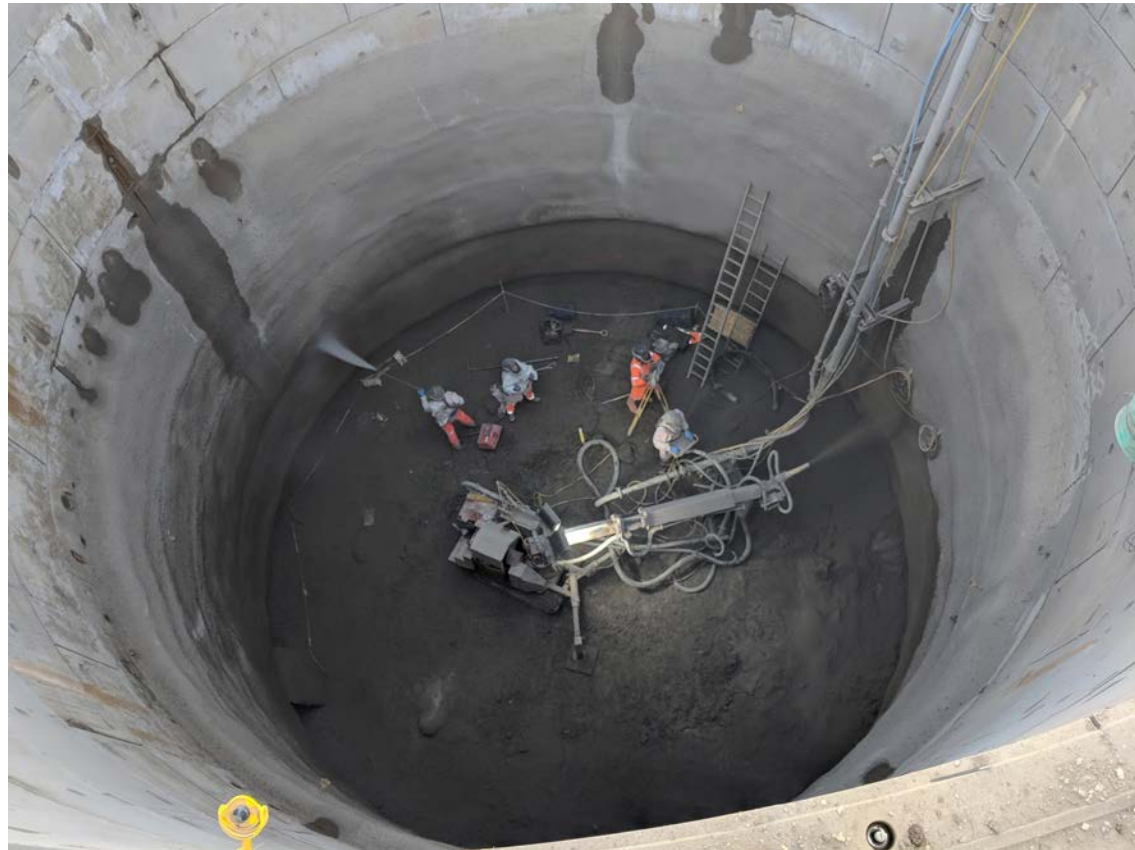
King George's Park December /January 2019

- Cofferdam excavation to depth and installing framework
- Secondary lining slipform trials

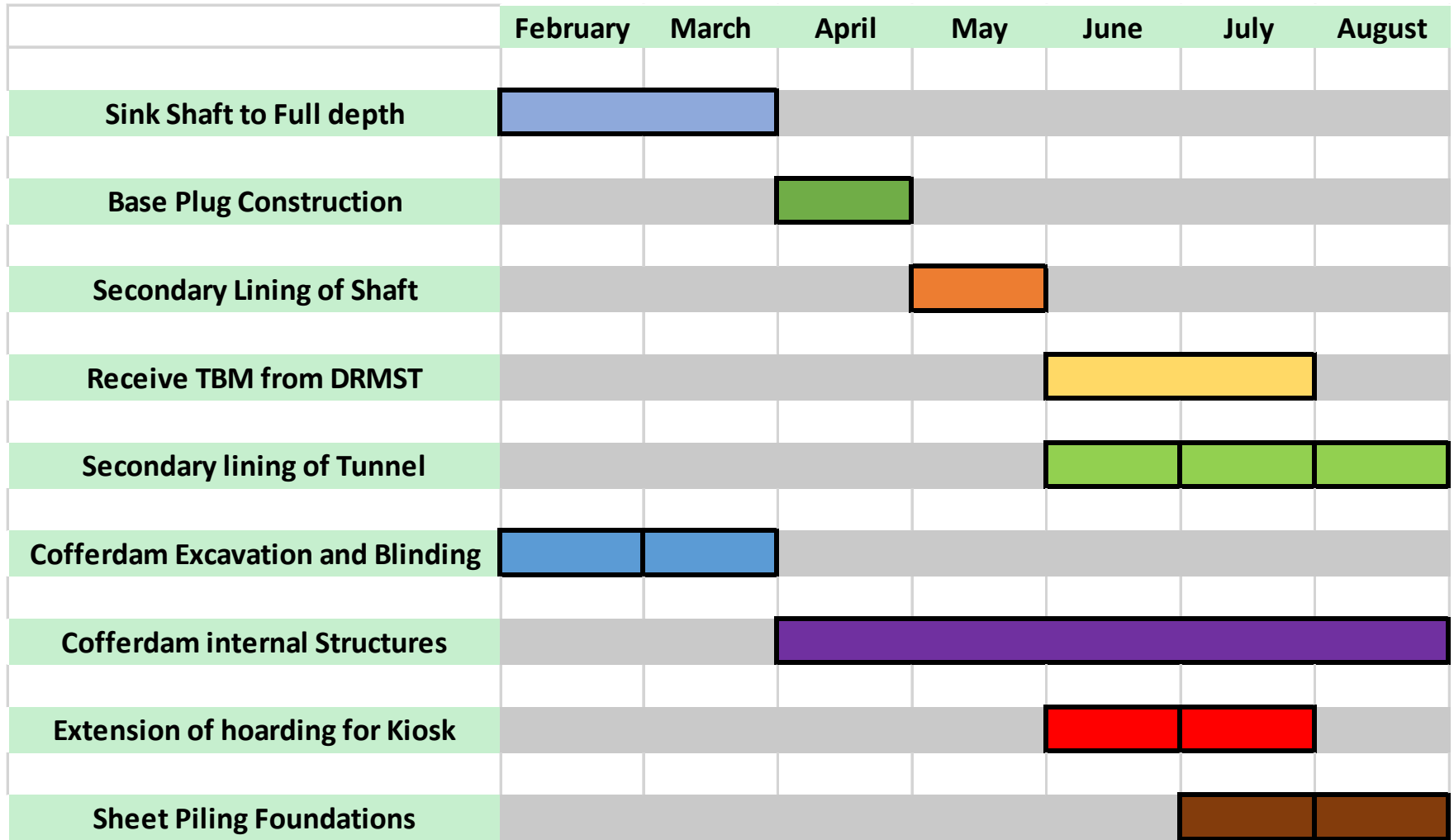


King George's Park February 2019

- Shaft excavation and Sprayed Concrete Lining
- Cofferdam finished excavation and casting base.

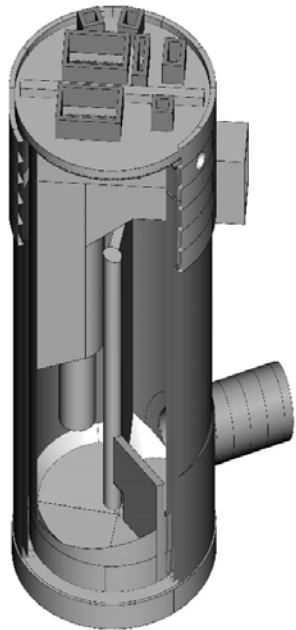


*Short Term Look Ahead

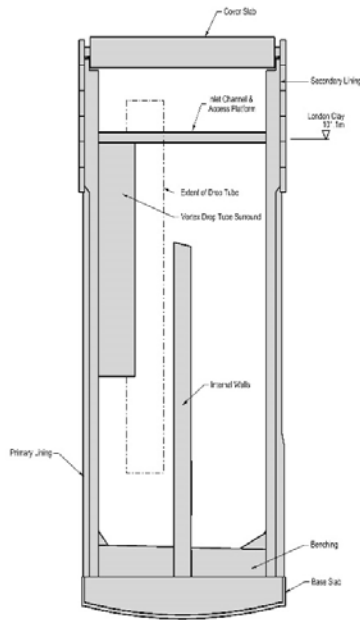


*Core working hours 8am-6pm Monday – Friday and 8am-1pm Saturday. One hour start up and shut down periods either side of working hours

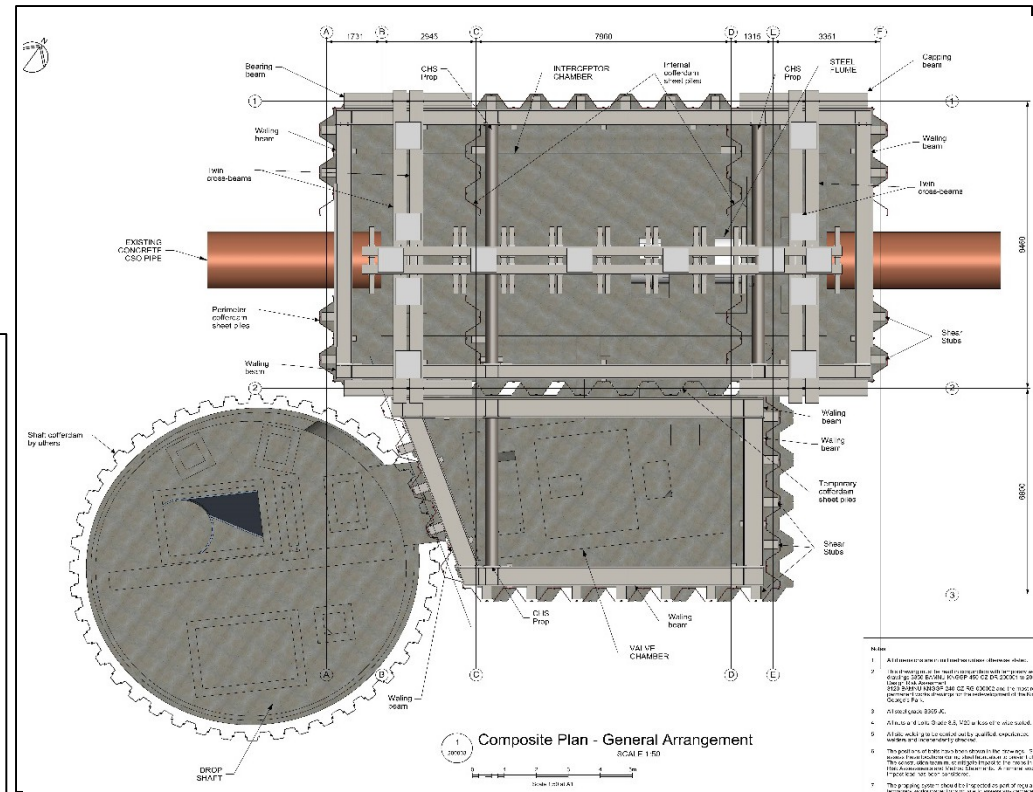
King George's Park – Shaft and Cofferdam Structures



Stage 7 - Isometric View
Scale 1:100

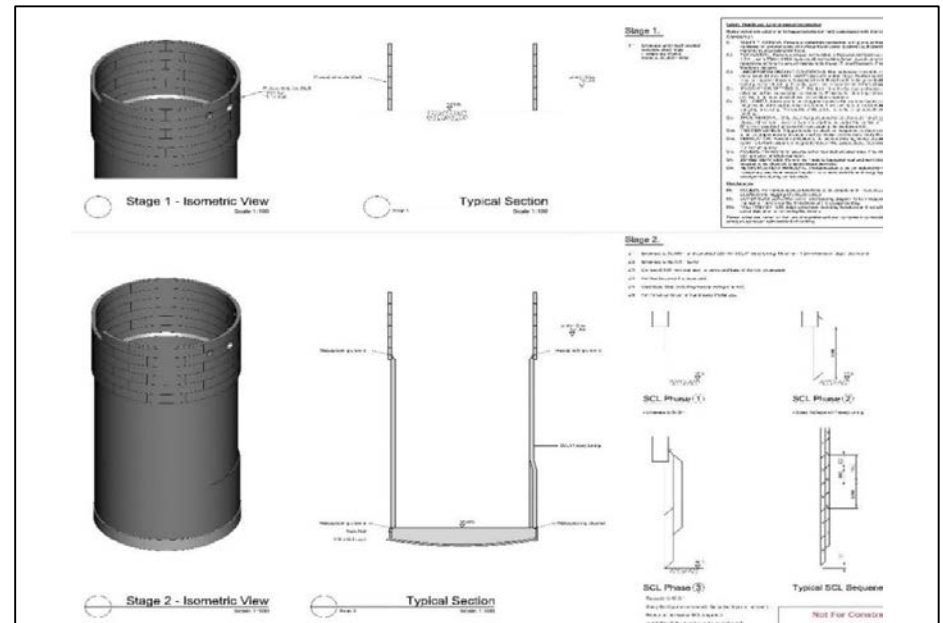
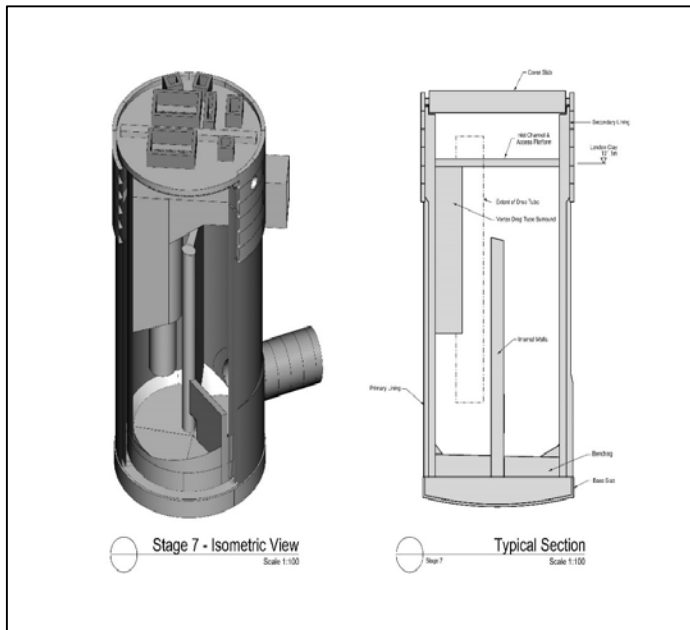


Typical Section
Scale 1:100



King George's Park – Shaft Construction Method

- Excavate and line shaft with Sprayed Concrete Lining (SCL) to a further depth of 21m below ground level
- Excavate the bottom of the shaft and cast base slab
- Portal Thickening on preparation for receiving Tunnel Boring Machine (TBM)
- Secondary Lining constructed from bottom up via Slipform construction



King George's Park – Kiosk Structure

- The kiosk is the only operational above-surface structure
- It's purpose is to monitor and control the flows from this section of the network
- Only occasional maintenance access will be required
- It is positioned to be as non-intrusive to the final scheme park as possible
- It will include artwork, and the solid Bronze vent column will be engraved

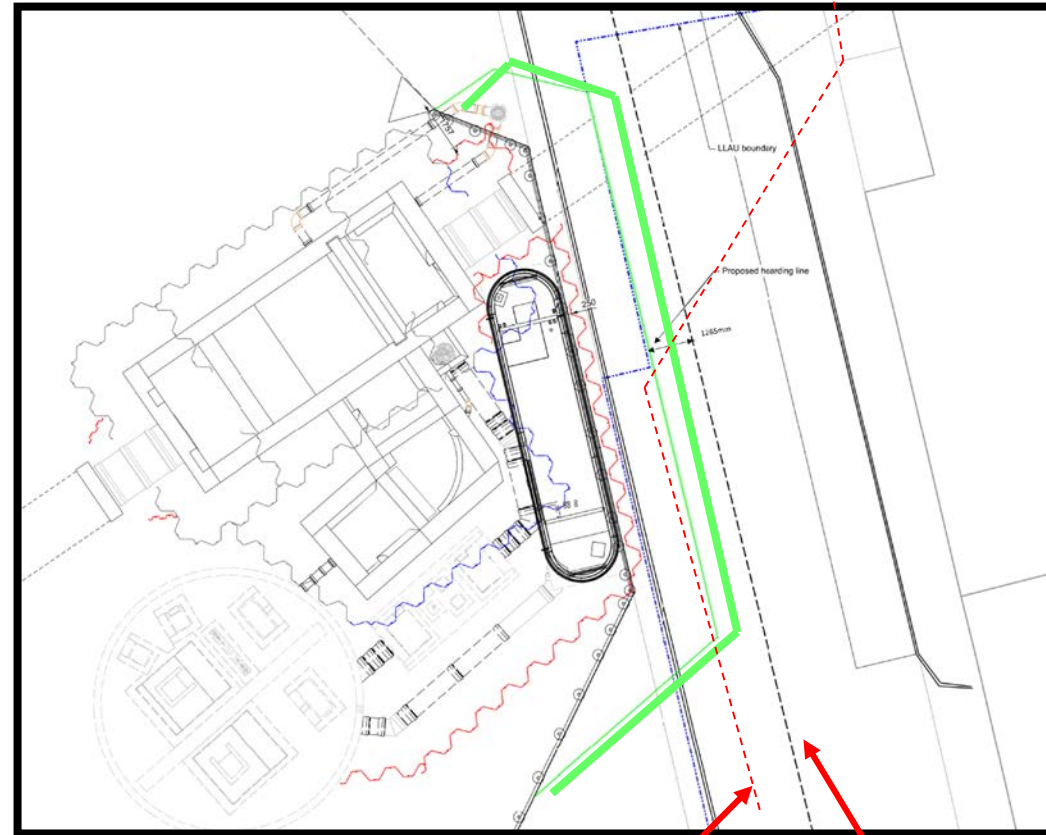


King George's Park – Kiosk Structure

The kiosk design size has increased, by around 60% in length.

The reasoning behind this design change:

- New technologies can be included to increase efficiency and safety of the working structure
- Poor ground conditions have been found through existing works, this has meant additional foundation support is required. This is a previously unforeseeable change
- Previously unknown services have been located requiring protection



Hv cables

Foul water pipe

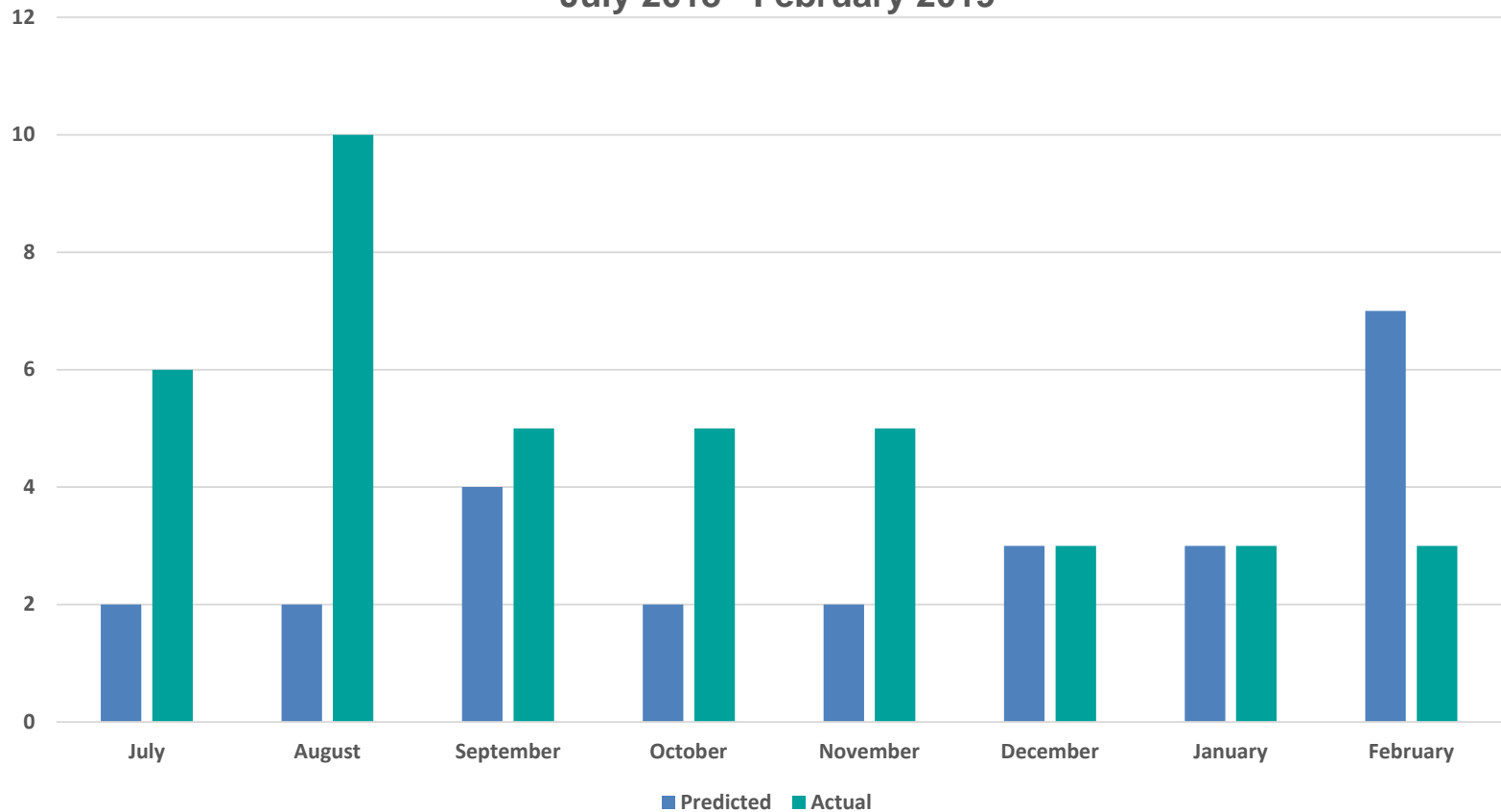
Landscaping

- Under Development Consent Order (DCO) Schedule 3 requirement . The design is in accordance with the Indicative Landscaping Plan and the 15 design principles
- Key items covered within this application (KNGGP6) include hard/soft landscaping materials, finished ground levels, minor structures (furniture, signs, lighting etc.), details of trees to be retained
- The draft application was submitted to London Borough of Wandsworth on 19 February 2019 for a 4 week consultation period in accordance with the procedures stated within Schedule 17 of the DCO
- The formal application is to be submitted at a later date (date TBC)



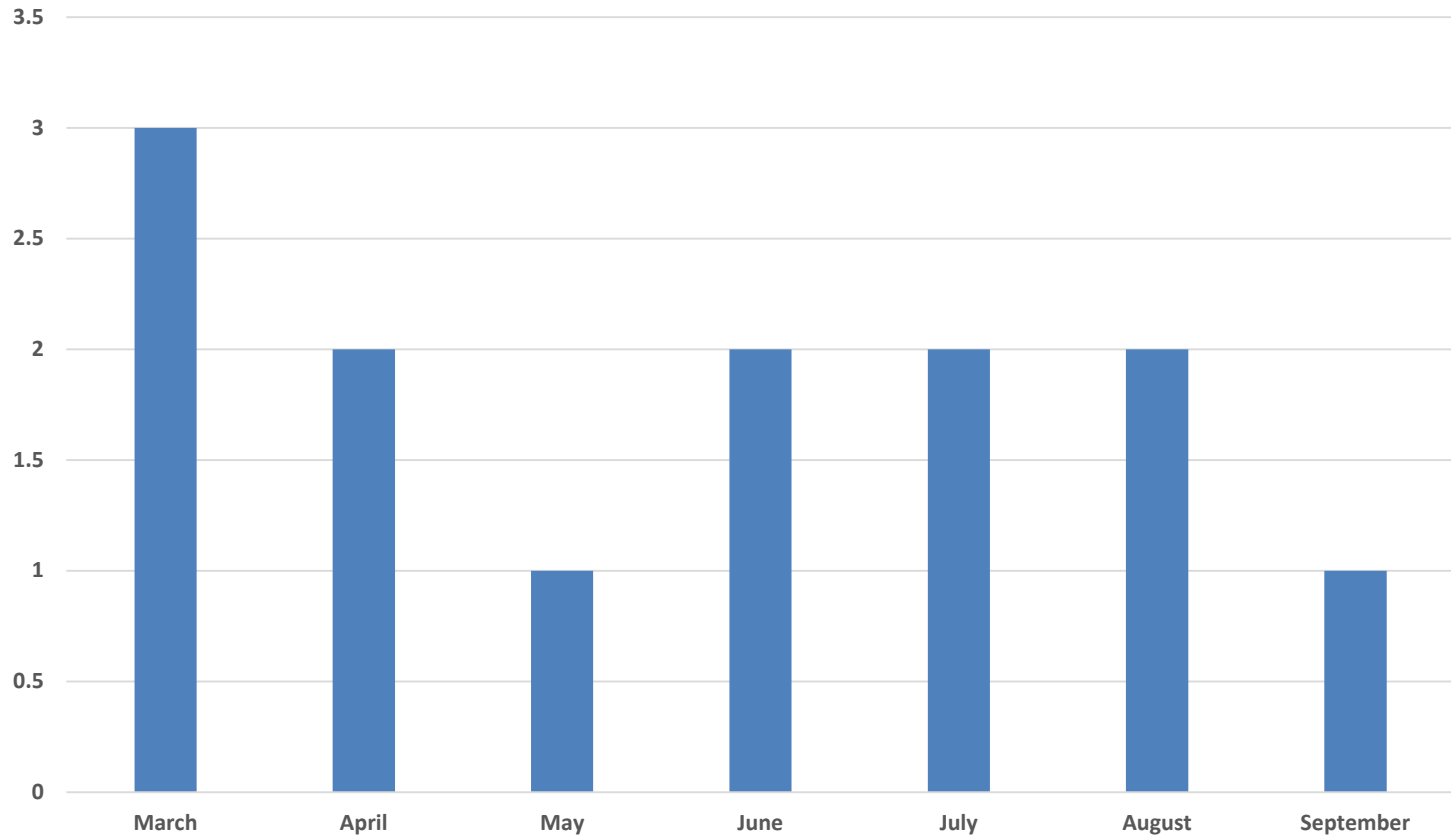
Predicted and Actual Heavy Goods Vehicles (HGVs) coming into site: July 2018 – February 2019

Predicted and Actual Vehicle Movements
(Monthly Daily Average)
July 2018 - February 2019



Predicted Heavy Goods Vehicles (HGVs) coming into site: March to September 2019

Predicted Movements(Monthly Daily Average)
February - September 2019



COMMUNITY ENGAGEMENT

Community Engagement and Complaints

- **Dormay Street** – 3 Information Sheets sent out since last meeting
- **King George's Park** – 5 Information Sheets sent out since last meeting

5 complaints/ enquires received for Dormay Street which included:

- **Request to visit site**
- **Late night noisy works**
- **Request to be included on email distribution list**
- **Update on works and time line**
- **Enquiry on piling works**

8 complaints/ enquires received for King George's Park which included:

- **2 x Night time working**
- **Hoarding and Footpath lighting**
- **2 x Faulty temporary traffic light**
- **Weekend working hours**
- **Request to be included on email distribution list**

All other enquiries have been responded to within 24 hours (where possible)

Hoarding - Artwork

The hoarding at King George's Park now includes the new artwork 'Through Kaleidoscope Eyes', created by artist Emily Tracy in collaboration with West Hill in the Park Children's Centre, West Hill Primary School and local residents.

The artwork is the result of a series of workshops led by Emily in November 2017 and focuses on a diverse range of activity in the park. Including people and objects alongside natural elements such as plants, insects and animals, as well as historical references to the rich history of the park and local area.



BMB Tideway West Legacy

Volunteered 3000+ hours last year for local causes

STEM volunteering – 1600+ hours at schools
including Wandsworth

27 successful work placements over the summer

23 apprentices working across the seven sites

Almost 1 in 50 employees is an ex-offender

BMB collaborate with Women In Construction to
push a more gender diverse workforce

Almost 20% of employees live on local boroughs



BMB Tideway West – Time-lapse Video

You can watch the February time-lapse video by clicking the link below.

https://youtu.be/z9aBsbt_sHE

HOW TO MAKE A CLAIM IF YOU ARE AFFECTED BY TIDEWAY'S WORK

Who do I go to for advice?

- Independent Advisory Service (IAS) Helpline for independent advice: **0800 917 8845** or info@tidewayias.co.uk
- Tideway's Compensation Officer, **Louise Walsh**, for personal assistance and advice: via Tideway Helpdesk **08000 30 80 80** or helpdesk@tidewaylondon or direct **07971 077165** or louise.walsh@tidewaylondon

How do I submit my claim?

- Louise can submit your claim to the Independent Compensation Panel (ICP) on your behalf, or
- You can submit your claim direct to the ICP: admin@tidewayicp.london
- The IAS can send you a claim form, or you can download a claim form off [the Tideway website: www.tidewaylondon/help-advice/compensation-information/Independent-Compensation-Panel](http://www.tidewaylondon/help-advice/compensation-information/Independent-Compensation-Panel)

QUESTIONS?