



Tideway

**Earl Pumping Station
Community Liaison Working Group
25 February 2019**



CONSTRUCTION UPDATE

December 2018



Installation of the shaft's diaphragm walls

- 18 out of 26 wall panels are complete
- We plan to be finished around late March



Upcoming in the next three months

- **Demobilisation of diaphragm walling equipment**
 - Machinery and tanks removed from site
 - Some abnormal load movements (before 07:00 / after 19:00)

- **Ground water pump test inside the shaft's footprint**
 - 3x 72 metre deep boreholes to be installed inside the shaft
 - We will then pump water into the boreholes to understand the flow and depth of groundwater, ahead of any excavation
 - The water pump will run for 24 hours at a time

Installation of the shaft's capping beam

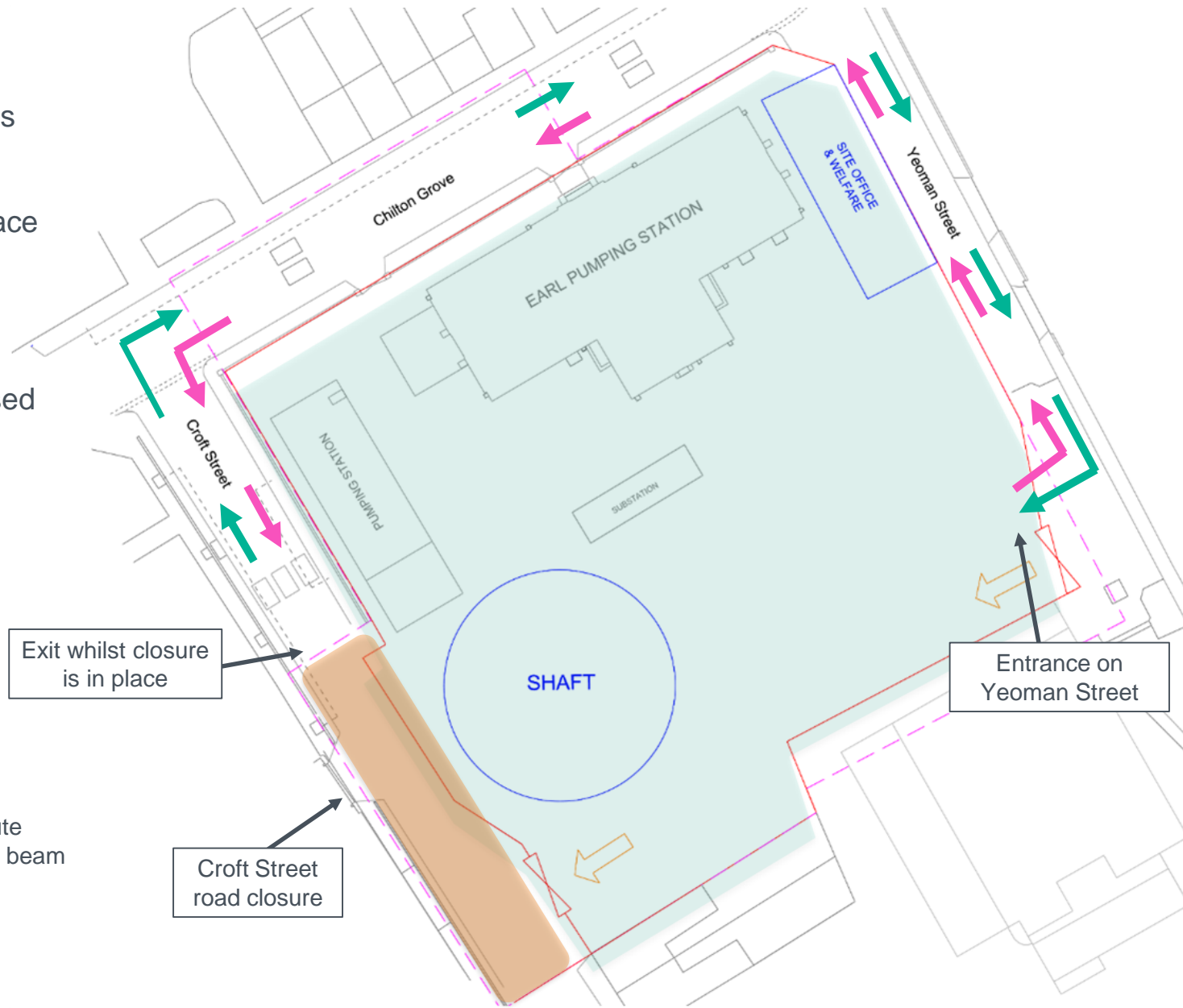
- The capping beam is a reinforced concrete structure to form the top of the shaft
- Construction will include removing the tops of the diaphragm walls and surrounding platform foundations
- A majority of the concrete will be saw cut (reducing direct breaking) and then broken off site, although there will be some direct breaking required, using a concrete breaker
- The capping beam will be concreted in two sections (one day each). This may take place in extended working hours (up to 22:00), as concrete must be poured continuously to ensure a consistent quality of the structure.



Example of a capping beam at the top of a shaft

Traffic management during capping beam construction

- Temporarily use both Yeoman Street and Croft Street for access and egress
- This is due to site space constraints on site during capping beam construction
- Croft Street will be used for a small amount of deliveries
- All vehicles will continue to access Yeoman Street from Plough Way



Existing route

Occasional route during capping beam construction

Croft Street road closure

Exit whilst closure is in place

Entrance on Yeoman Street

Programme

Programme Overview														
	February		March		April		May		June		July		August	
Shaft diaphragm wall construction	█	█	█	█										
Demobilisation of shaft diaphragm wall equipment			█	█	█	█	█							
Shaft ground water test (includes running a water pump for 24hrs at a time)			█	█	█	█	█							
Shaft capping beam (extended hours for 2 concrete pours)								█	█	█	█			
Shaft excavation (extended hours once below 5 metres in depth)												█	█	█

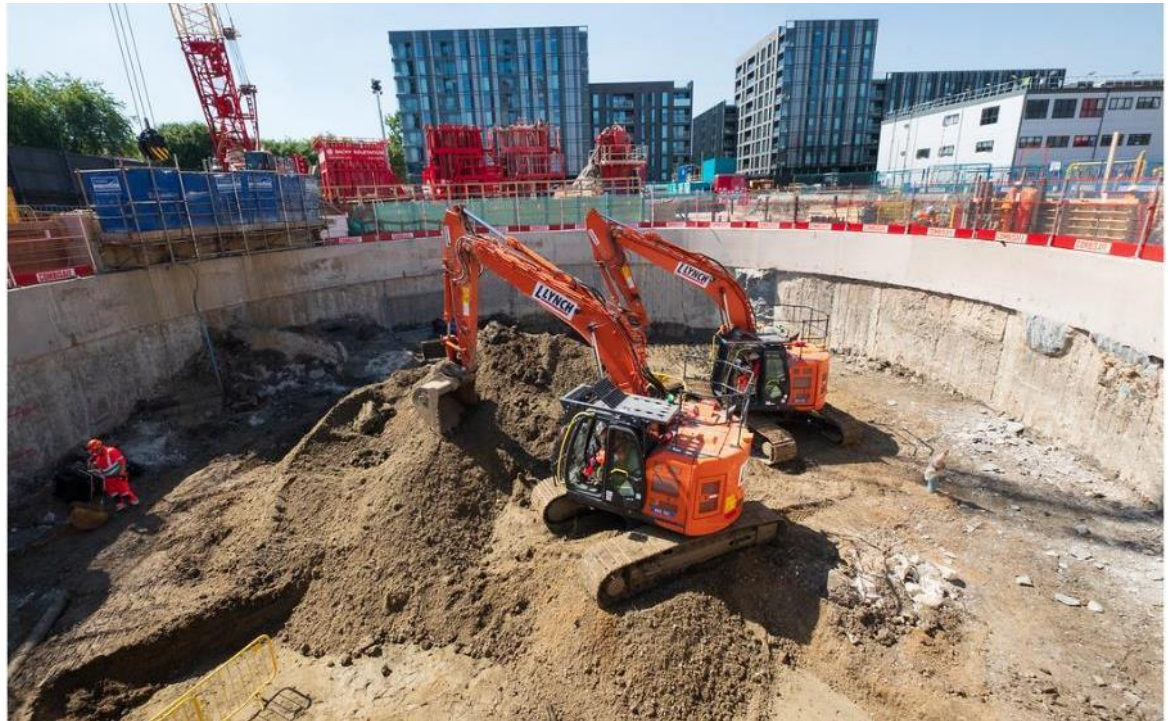
Standard Working Hours (08:00 - 18:00) Monday to Friday, (08:00 - 13:00) Saturday
 Extended Working Hours (08:00 - 22:00) Monday to Friday, (08:00 - 13:00) Saturday

Working Hours	Standard	Extended
Monday – Friday	08:00 – 18:00	Until 22:00
Saturday	08:00 – 13:00	Until 17:00

1 hour allowed before & after for mobilisation

Shaft excavation in the Summer

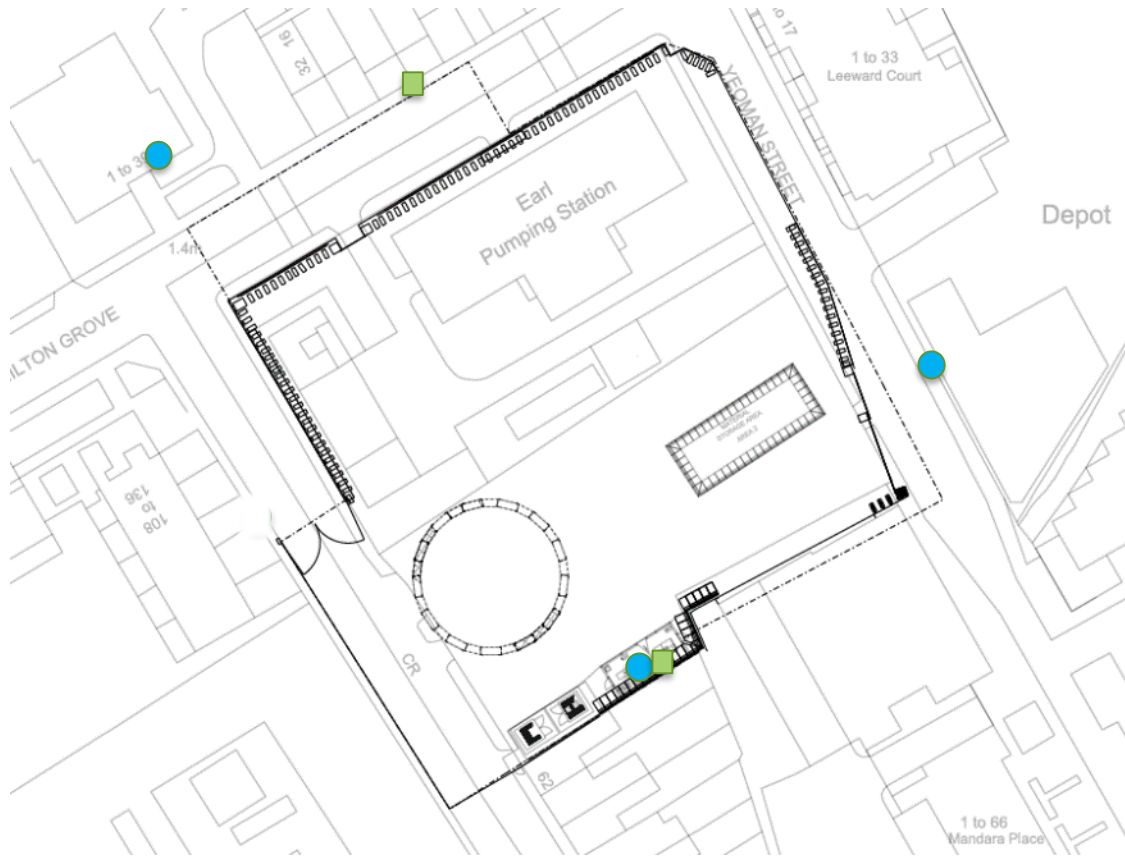
- Excavation will consist of digging and removing spoil using excavators
- This will continue until we have dug out the shaft to a depth of approx. 50 metres
- Periodic concrete breaking may be required
- Once below 5 metres deep we may work extended working hours (up to 22:00)



Example of excavation inside the shaft

ENVIRONMENT

Noise and Air Quality



- Noise Monitor
- Air Quality Monitor

Month	Noise		Air Quality	
	S61 Exceedances	24h PM ₁₀ Exceedance	Cause	Remedial action
Sep-18	0	1	Site clean-up activities and logistical movements	Increase dust suppression, re-brief operatives and increase the frequency of site inspections
Oct-18	0	0		
Nov-18	0	0		
Dec-18	0	0		
Jan - 19	0	0		

Odour Management

When excavating, odour from ground conditions may become more noticeable

To minimise this, odour will be managed in the following ways:

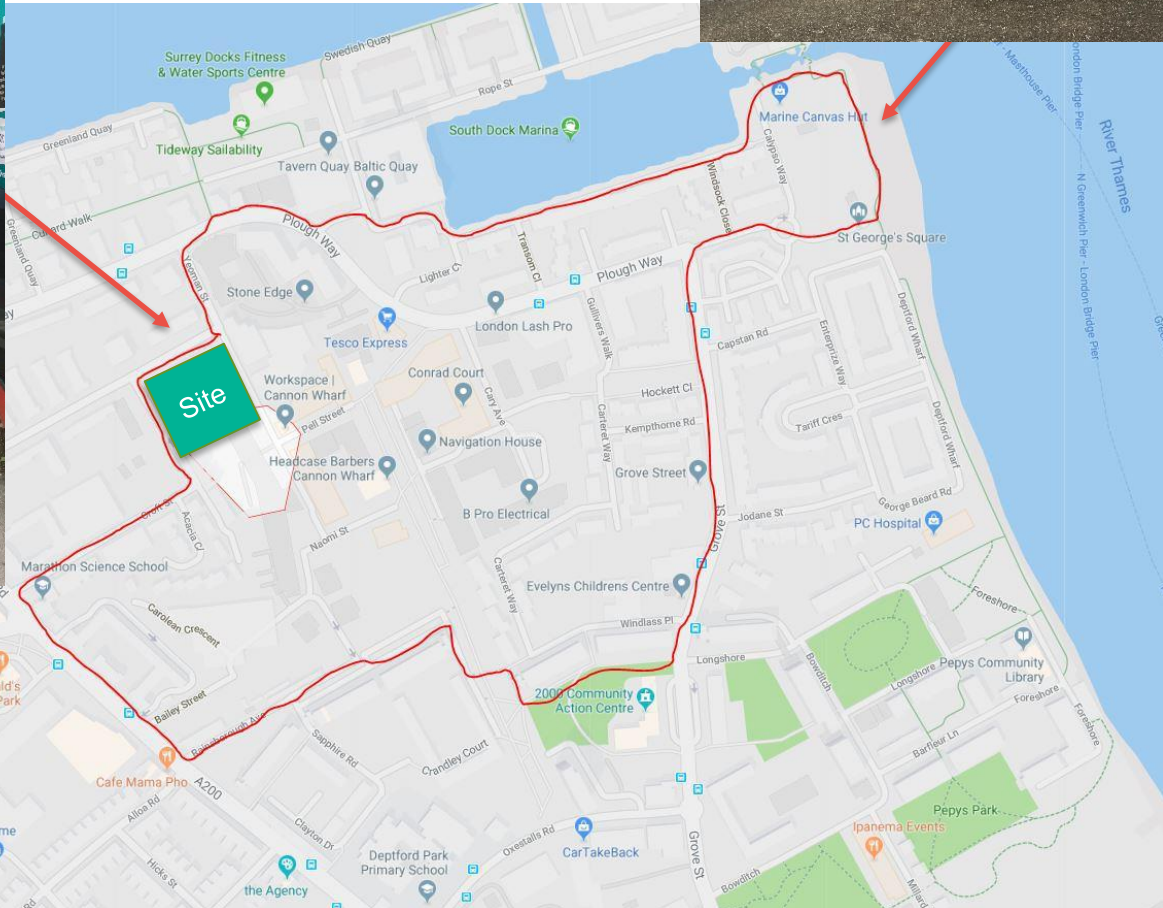
- Odorous excavated material will be covered and removed from site as soon as possible
- Site personnel trained to identify and deal effectively with odour sources
- Daily assessments at site boundary to confirm control measures are working
- 'Misting' system to de-odourise or mask odour when necessary



LEGACY

Second round of plogging

'Plogging' is a fitness trend that combines running with picking up litter



Foreshore clean-up

On Friday 15 February, a team from EARPS picked up litter from the Thames's beach along the Cutty Sark in Greenwich



Thank you

Any questions

please contact the Tideway Helpdesk on:

Telephone: 08000 308080

Email: Helpdesk@Tideway.London