



Tideway



**MORGAN
SINDALL**

Balfour Beatty

Hammersmith Pumping Station CLWG

Tuesday 22 January 2019

Progress Update

Aerial View of Hammersmith Pumping Station

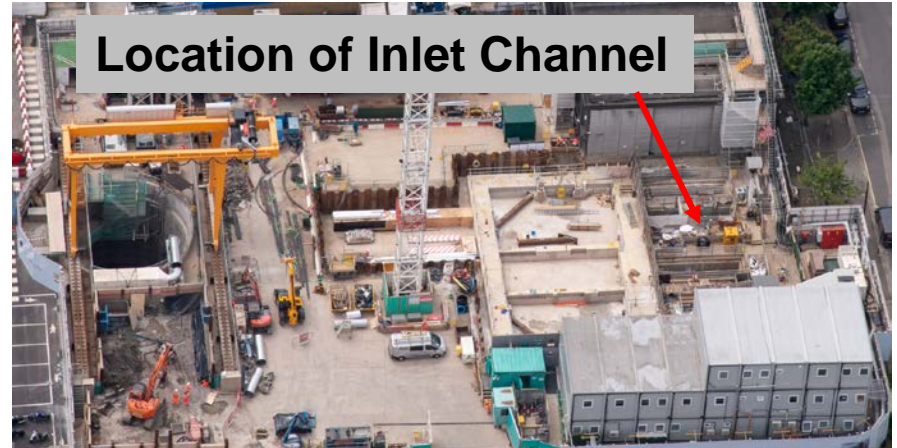


Hammersmith Pumping Station – Tideway Works

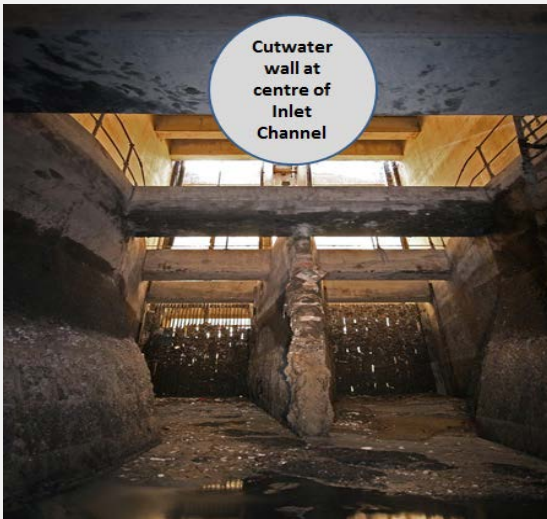


Works Update - Inlet Channel Works

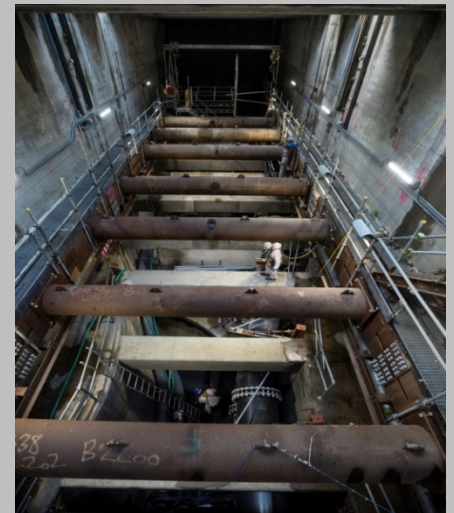
- Demolition of 115m³ Central Wall completed
- Base concrete completed ahead of schedule



Before



After



Works Update - Interception Chamber

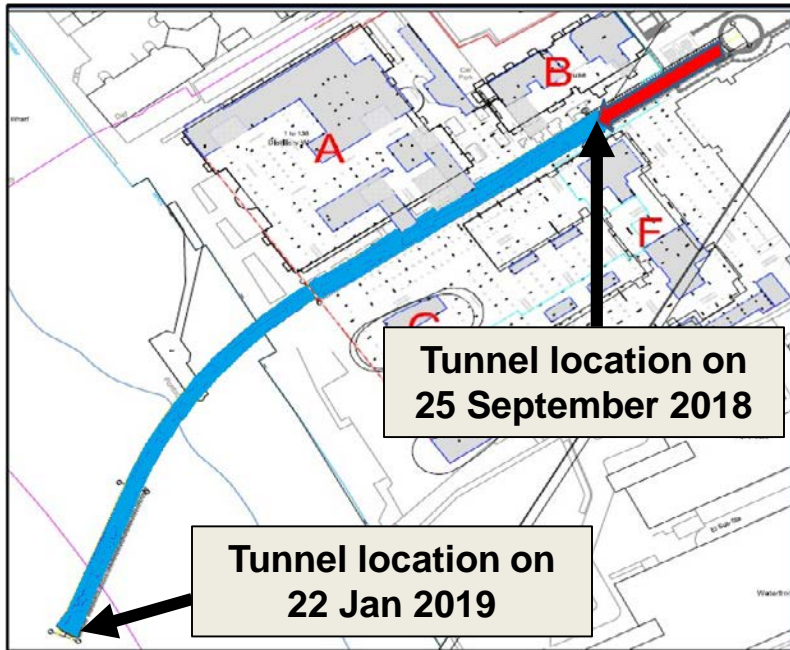
- Excavated 10m below ground level
- 3rd level frame concreted
- Excavation to upper base slab Jan – April 19

Location of Interception Chamber



Works Update -Tunnel Construction

- 295m of 295m completed – Under middle of River Thames
- Averaging 13.5m/week. Best week – 20m
- Completion of primary SCL Jan 2019

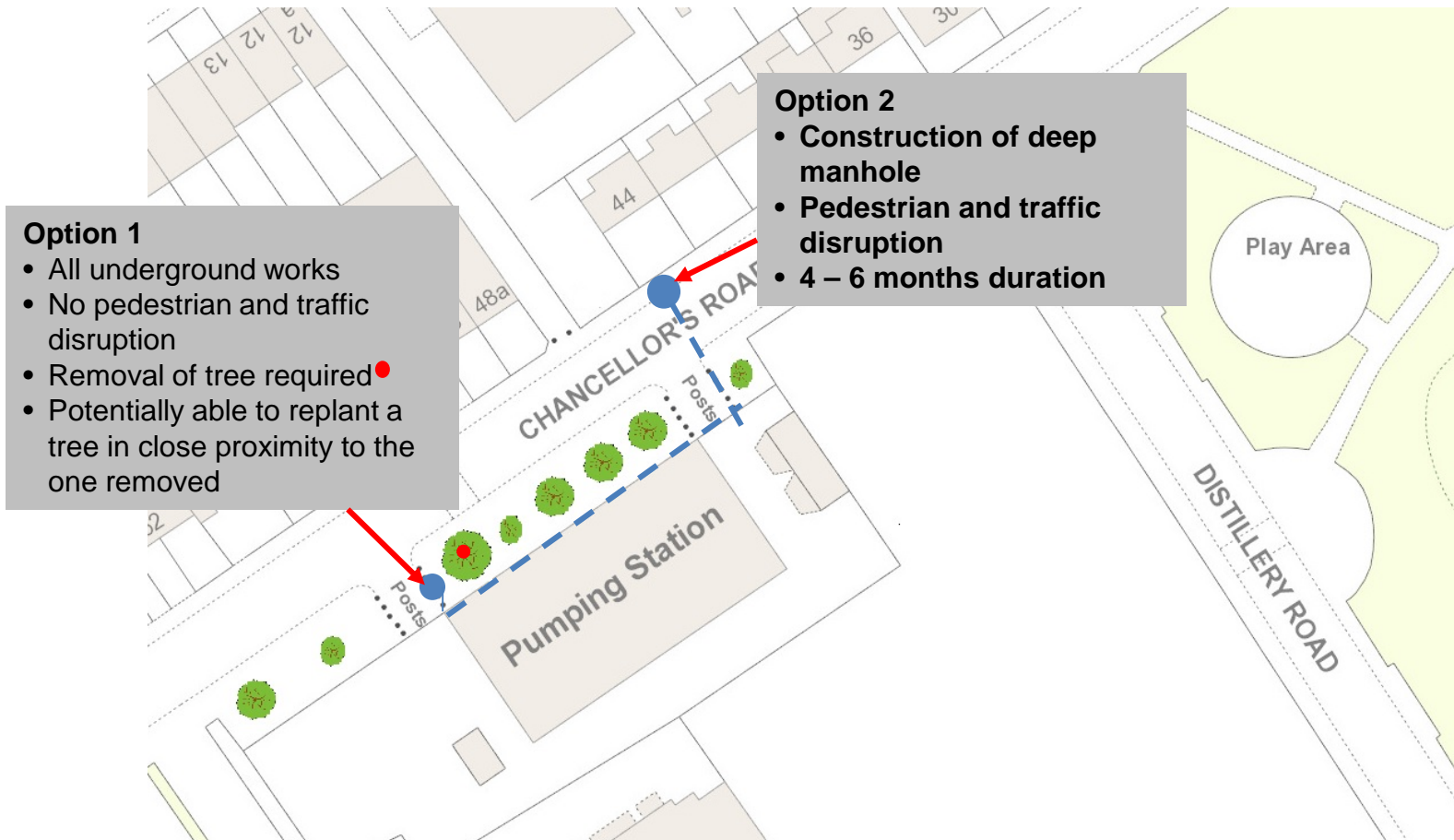


Tunnel Construction



Rising Main Connection

- New rising main connection to sewers in Chancellors Road required
- Currently 2 options



Short Term Look Ahead (next 3 months)

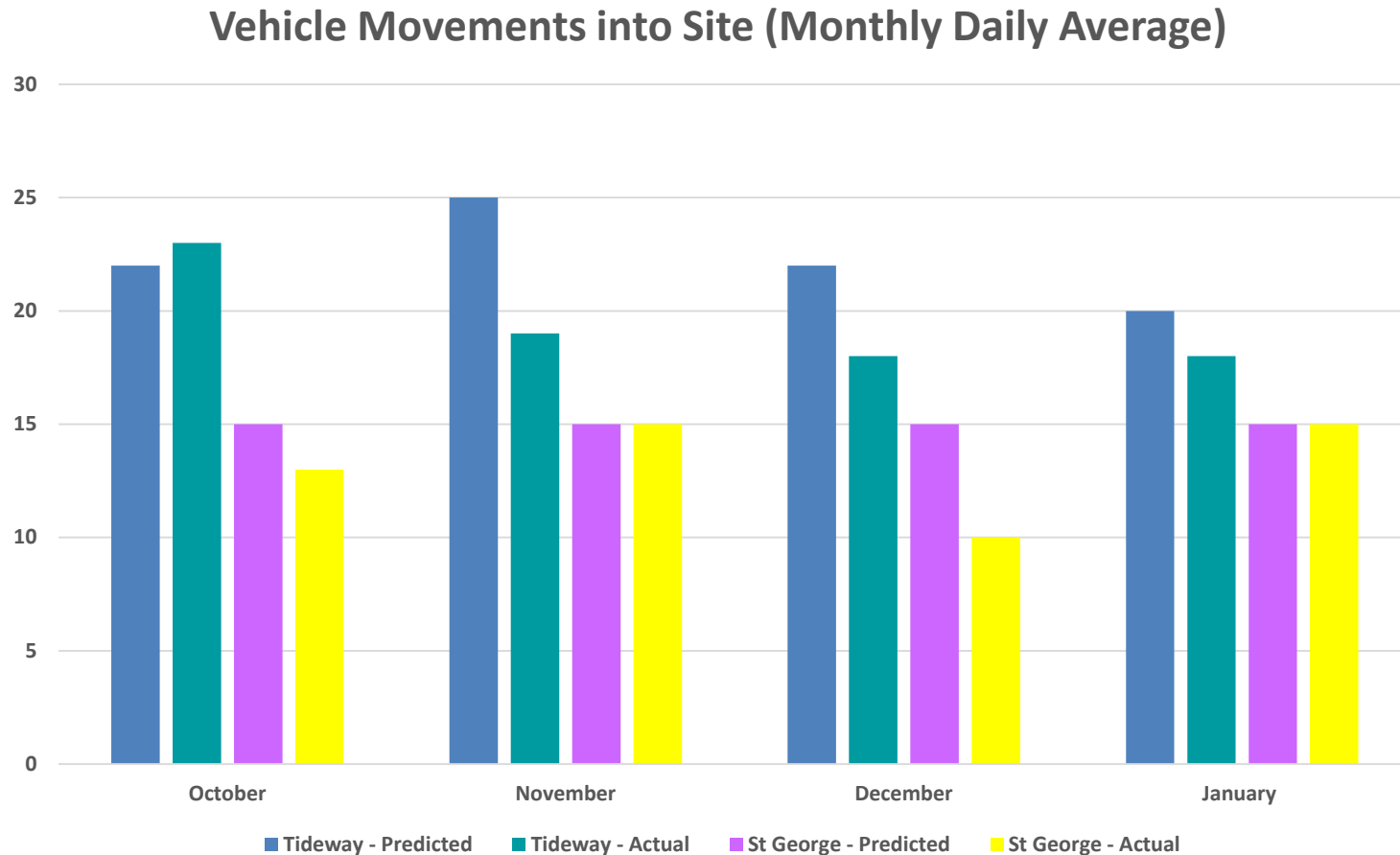
	January	February	March	April	May
Tunnel Construction					
Tunnel formwork delivery & site assembly					
Inlet Channel - Cast New Beams					
Inlet Channel - Pipeline installation along Chancellor's road					
Interception Chamber - Excavate / Concrete					

Core working hours 8am-6pm Monday-Friday and 8am-1pm Saturday
 One hour startup and shutdown periods either side of working hours
 Tunnel construction 24-hours working Monday - Friday (planned)
 Tunnel construction 24/7 Consented

Night time working

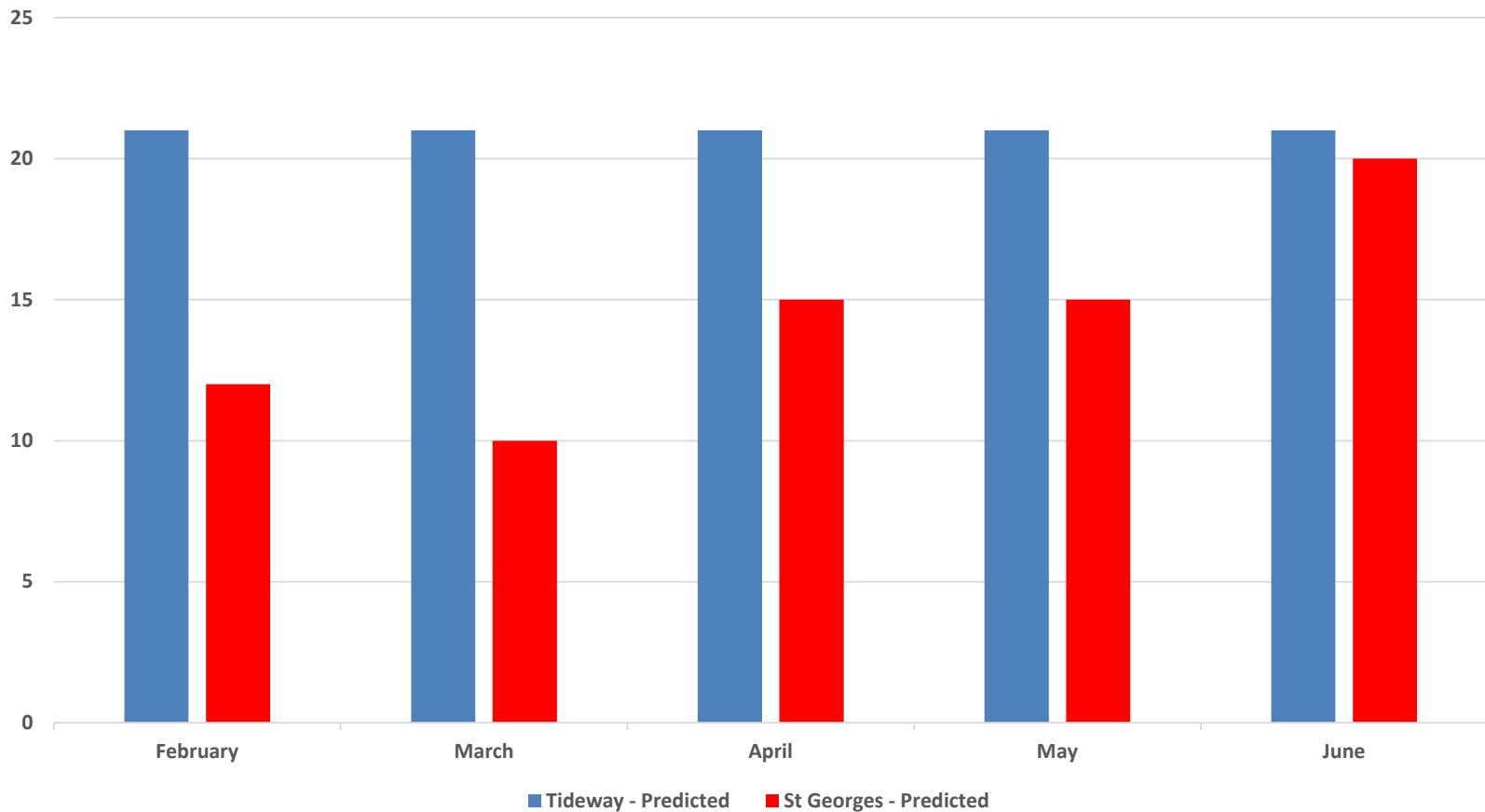
- 24hour works basis, 5 days a week. Monday 8am to Friday 6pm
- Night Shift working commenced 25th June
- Tunnelling works commenced on 6th August
- Tunnelling excavations completed 22 January
- 24 Hour works expected to last up to end of February 2019 where we prepare tunnel for secondary lining works
- 24 hour works restarts for approximately 3 weeks in July for Shaft Slip form works

Predicted and Actual Vehicle Movements: October 2018 – January 2019



Predicted Forecast Vehicle Movements: February to June 2019

Vehicle Movements into Site (Monthly Daily Average)



Community Engagement

Community Engagement and Complaints

1 Complaints / Enquiry received since last meeting:

- 1. Time line of 24 Hour Works**– *Resident was advised of duration of 24 hour works*

Enquiry responded to within 24 hours



Call: 08000 30 80 80
Email: helpdesk@tidewaylondon
Write to: Freepost TIDEWAY

Community Engagement

Painting work carried out for Field Road Tenants and Residents Association

"I would like to express our gratitude towards the Hammersmith team for assisting the Field Road Tenants and Residents Association with the sanding down and painting of estate railings.

We represent 402 households of the Field Road estate and have received an enormous amount of positive feedback regarding your teams support and overall achievements."

Rene Biro - Vice Chair of Field Road TRA



BMB Tideway West Legacy

Volunteered 2800+ hours last year for local causes

STEM volunteering – 1300+ hours at schools including Hurlingham Academy, Hammersmith Academy and St John Lillie Primary School in Hammersmith & Fulham

27 successful work placements over the summer

19 apprentices with 4 more joining in January
Almost 1 in 50 employees is an ex-offender – Key4Life is an LBHF funded organisation

BMB collaborate with Women In Construction to push a more gender diverse workforce

Almost 20% of employees live on local boroughs



BMB Tideway West Legacy



HOW TO MAKE A CLAIM IF YOU ARE AFFECTED BY TIDEWAY'S WORK

Who do I go to for advice?

- Independent Advisory Service (IAS) Helpline for independent advice: **0800 917 8845** or info@tidewayias.co.uk
- Tideway's Compensation Officer, **Louise Walsh**, for personal assistance and advice: via Tideway Helpdesk **08000 30 80 80** or helpdesk@tidewaylondon or direct **07971 077165** or louise.walsh@tidewaylondon

How do I submit my claim?

- Louise can submit your claim to the Independent Compensation Panel (ICP) on your behalf, or
- You can submit your claim direct to the [ICP: admin@tidewayicp.london](mailto:ICP:admin@tidewayicp.london)
- The IAS can send you a claim form, or you can download a claim form off [the Tideway website: www.tidewaylondon/help-advice/compensation-information/Independent-Compensation-Panel](http://www.tidewaylondon/help-advice/compensation-information/Independent-Compensation-Panel)

Questions