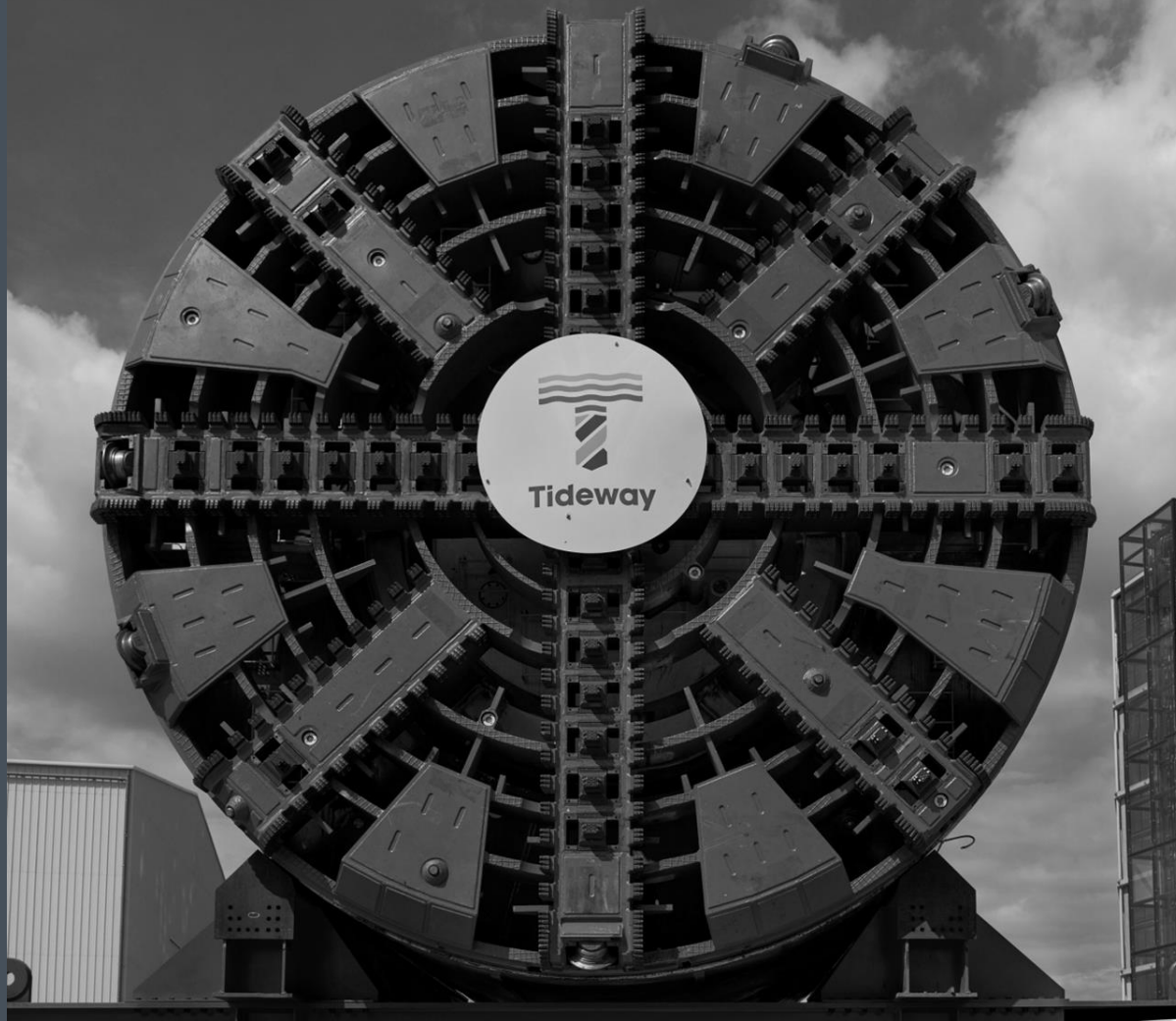


Tideway Central:

Community Liaison Working Group 23/10/18

Heathwall Pumping Station & Kirtling Street



Agenda

- Heathwall Site Progress and Programme
- Kirtling Street Site Progress and Programme
- Site Air Quality and Noise Data – shortened
- Community Relations
- Other items / Actions from Last Meeting
 - Notifications
 - Greenwall
 - Window Cleaning

Tideway Central – Project Overview

Justin Feltham – Environmental Adviser

Project Overview

- Heathwall Pumping Station
 - Existing Combined Sewer Outfall into Thames.
 - Diversion of existing CSO to allow it to operate while we work.
 - Construction of cofferdam and placement of infill material to construct interception chamber and shaft.
 - Construction of CSO Shaft to connect new Tunnel.
- Kirtling Street
 - Drive site for construction of tunnel
 - Services and materials for TBM.
 - Removal of excavated material from TBM.



RIVER THAMES



Mapping reproduced by permission of Ordnance Survey on behalf of HMSO. © Crown Copyright and Database right 2015. All rights reserved. Ordnance Survey licence number 100056637

NOTES:

1. DRAWING CORRECT AS OF DATE IN REVISION HISTORY / CURRENT REVISION. REPRESENTATIONS ARE SUBJECT TO VARIATION AS WORK PROGRESSES.
2. BATTERSEA BARGE RELOCATED DURING HEAPS MARINE WORKS

KEY:

- MUCK CONVEYOR
- ACCESS BRIDGE

Work In Progress

Revision History					
Rev	Description	Drawn	Check	Appr	Date
Current Revision					
01					31/08/19

Contractor Approval: —

Work In Progress

P01.3

S0

Location

Contract Wide

CONTRACT WIDE

Document Information

FL0JV

REPRESENTATION OF HEAPS FINAL LAYOUT & KRTST TEMPORARY WORKS LAYOUT WITH NINE ELMS PIER AND HOUSE BOATS

4000-FL0JV-TTCEN-490-CZ-DH-000001
OFFICIAL



PLAN
SCALE 1:750

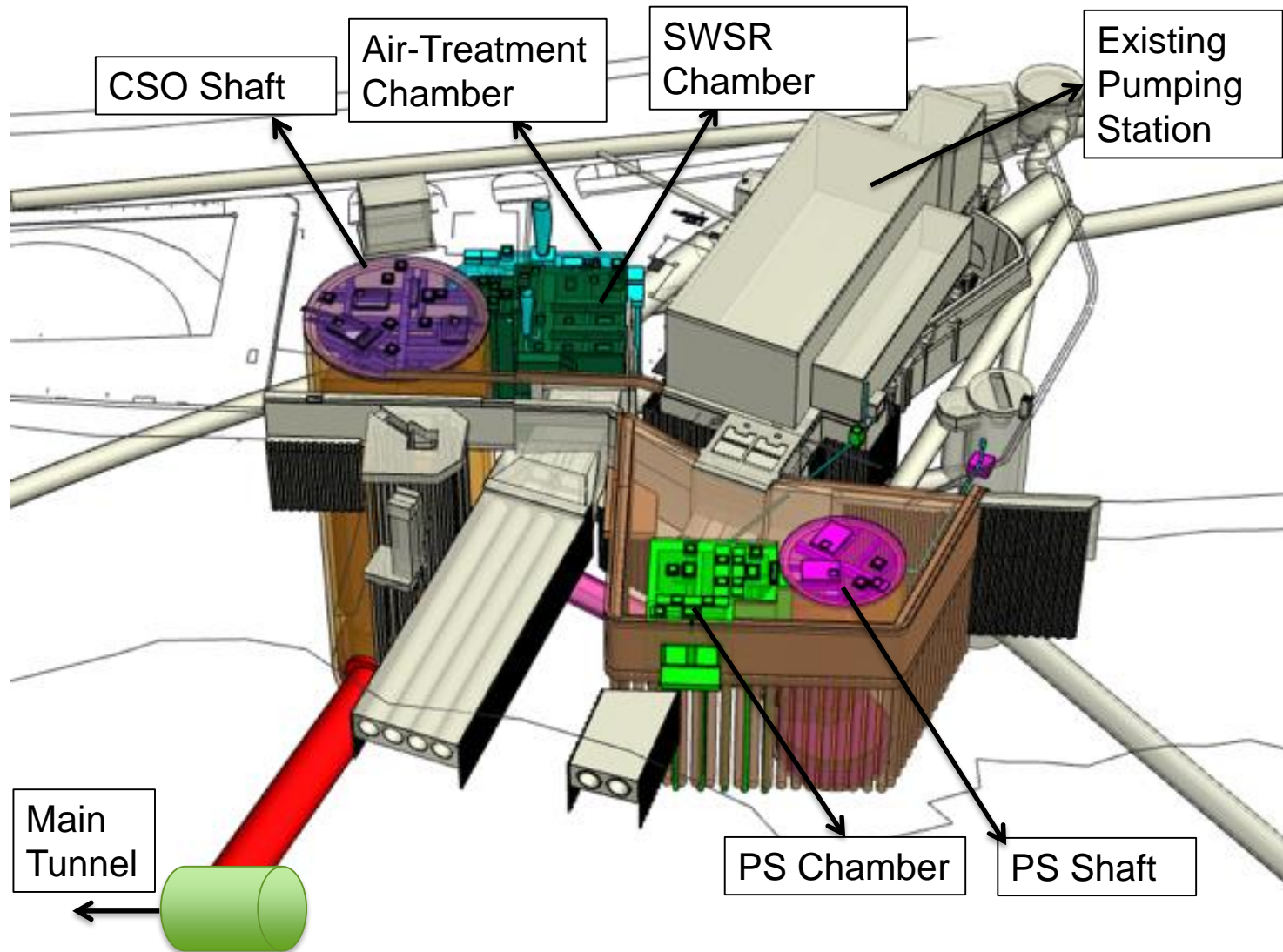


HEATHWALL PUMPING STATION UPDATE

Ponciano Perez – Project Manager

Landside Works and Marine Works

Heathwall Pumping Station Works



Works Complete in previous 4 months

- Demolition of existing PS outfall
- Installation of permanent river wall piles. 39 out of 41 piles installed to date. Remainder to be complete this week
- Construction of working platform to enable mobilisation of plant for land piling and shaft construction operations
- Completion of ventilation diversion
- Commencement of land piling works for Air Treatment Chamber bearing piles and SWSR interception chamber secant piles
- East entrance modification works

Marine Works – Demolition of Existing PS Outfall



Marine Works – River Wall Installation



Marine Works – River Wall Installation



Landside Works – Land Piling



Heathwall Pumping Station Upcoming Works

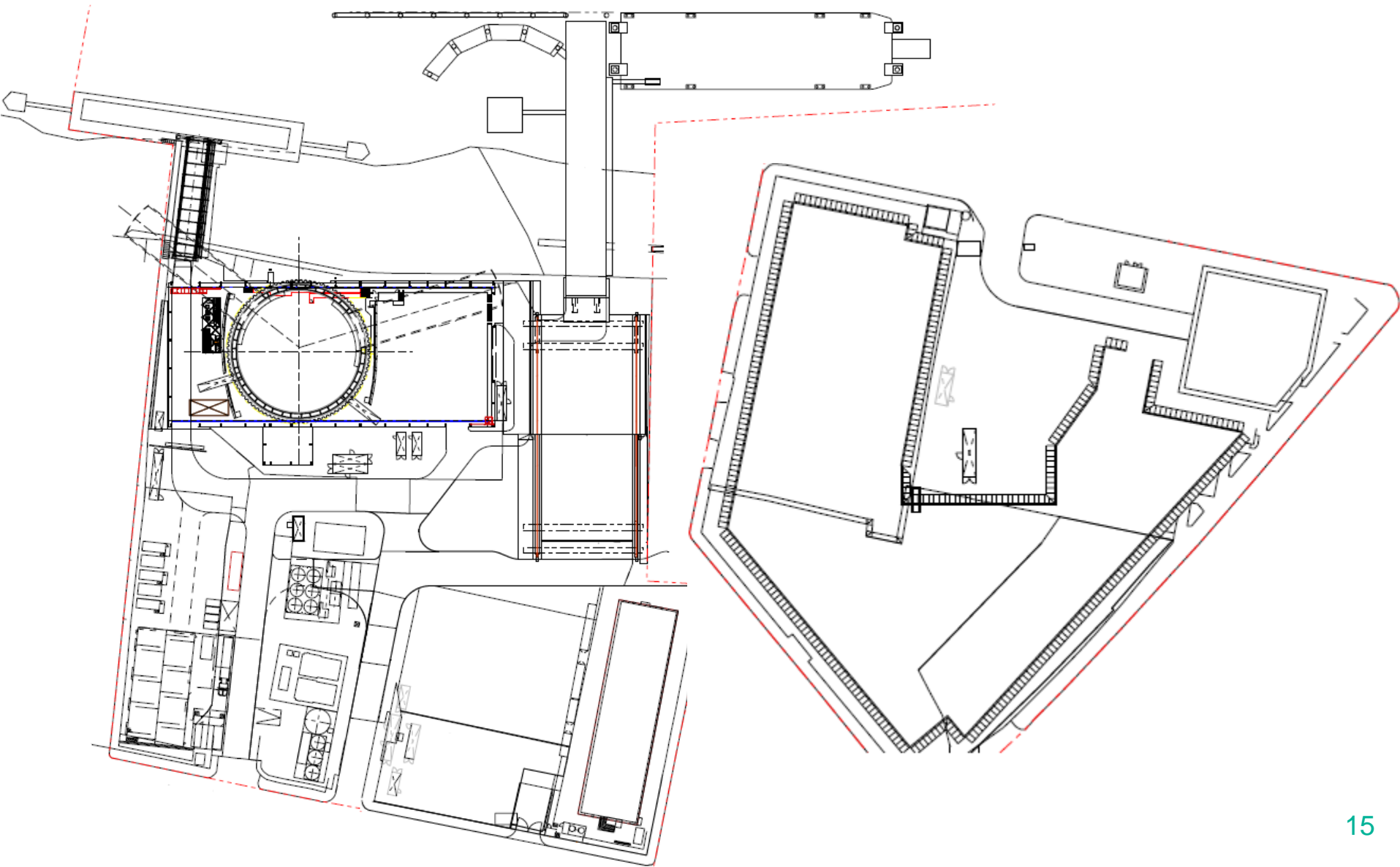
- Remainder of 2018;
 - East & West tie-in works for new river wall
 - Backfill of cofferdam
 - Completion of land piling works for SWSR interception chamber
 - Installation of dewatering structure
- Early 2019;
 - Highway modification works for CLP3
 - Installation of mooring piles for Battersea barge & campshed
 - Relocation of Battersea barge and construction of campshed
 - Augering of new river walls for installation of reinforcement & concrete
 - Commencement of secant piling for PS interception chamber
 - Commencement of CSO shaft construction

KIRTLING STREET RECENT WORKS

Justin Feltham – Environmental Adviser

Noel Cooper – Tunnel Senior Project Manager

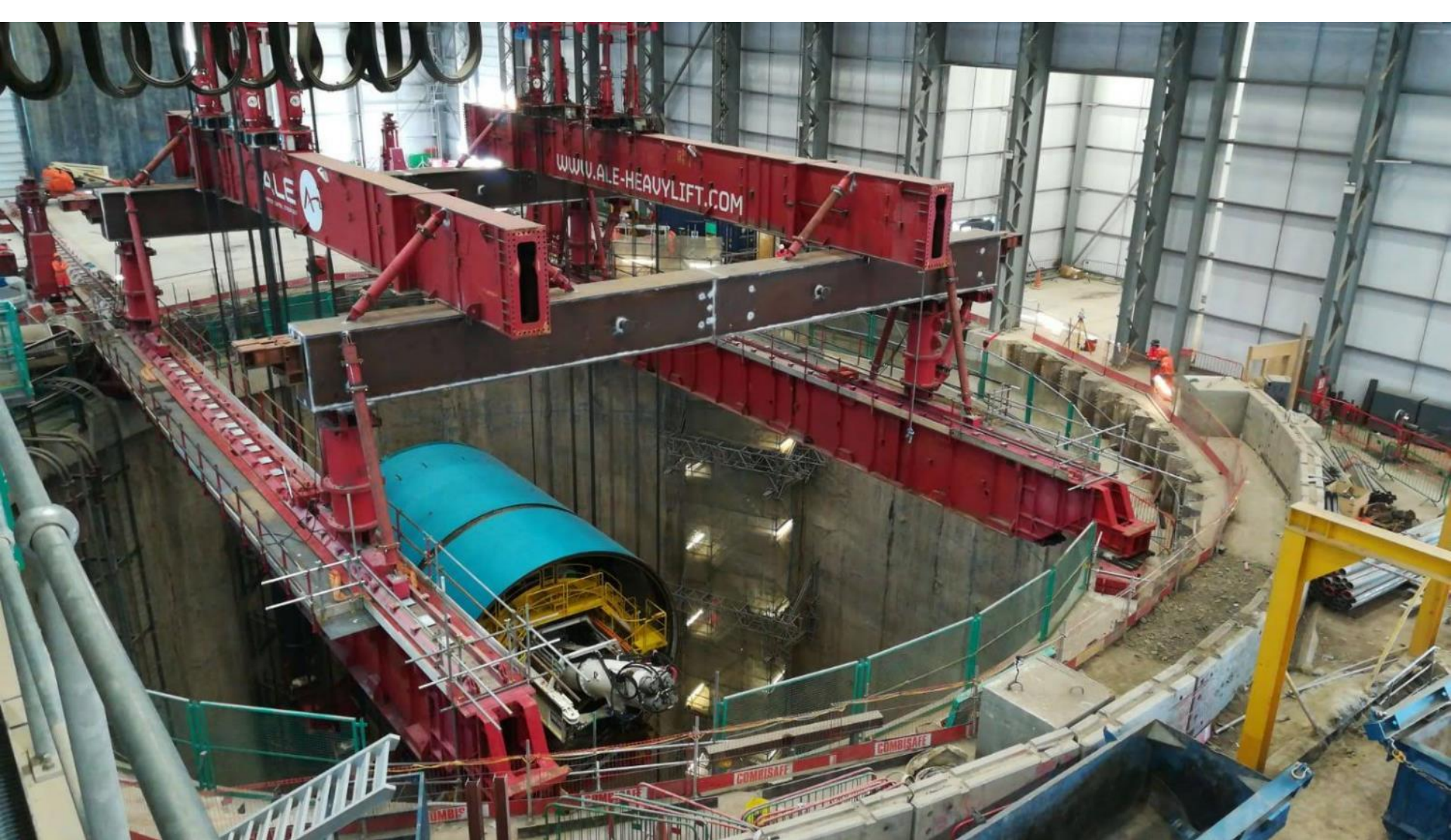
Kirtling Street Works



Tunnel Boring Machine (TBM) Lowering



Tunnel Boring Machine (TBM) Lowering



TBM in to Adits



TBM in to Adits



TBM in to Adits



TBM in to Adits





Excavate for Shaft Base Slab

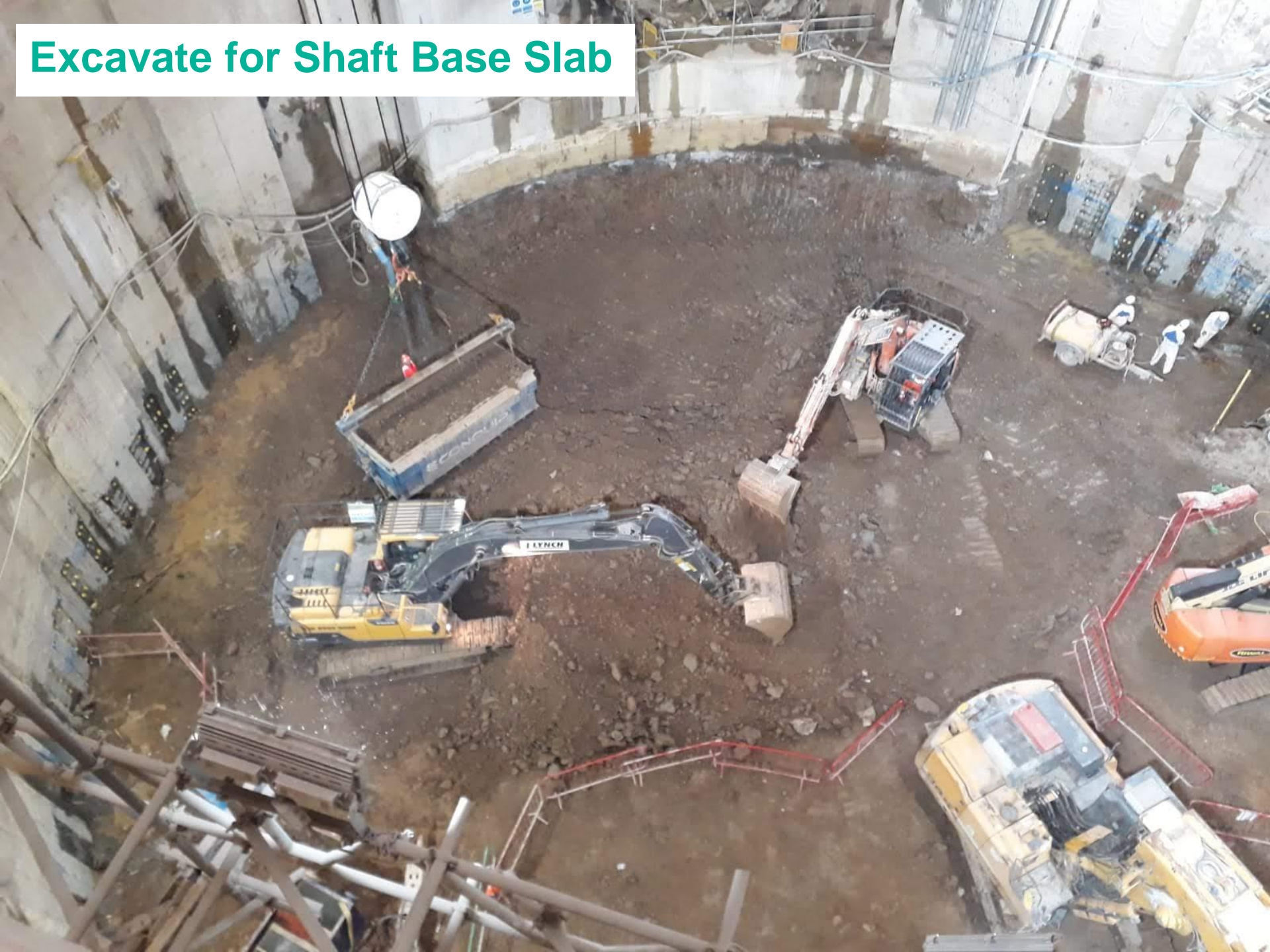


Excavate for Shaft Base Slab

Excavate for Shaft Base Slab



Excavate for Shaft Base Slab



Excavated Material Back into Barges



Excavated Material Back into Barges





Excavated Material Back into Barges



Excavated Material Back into Barges

Base Slab Excavation: 15,000t

Total Excavated from Shaft: 127,000t

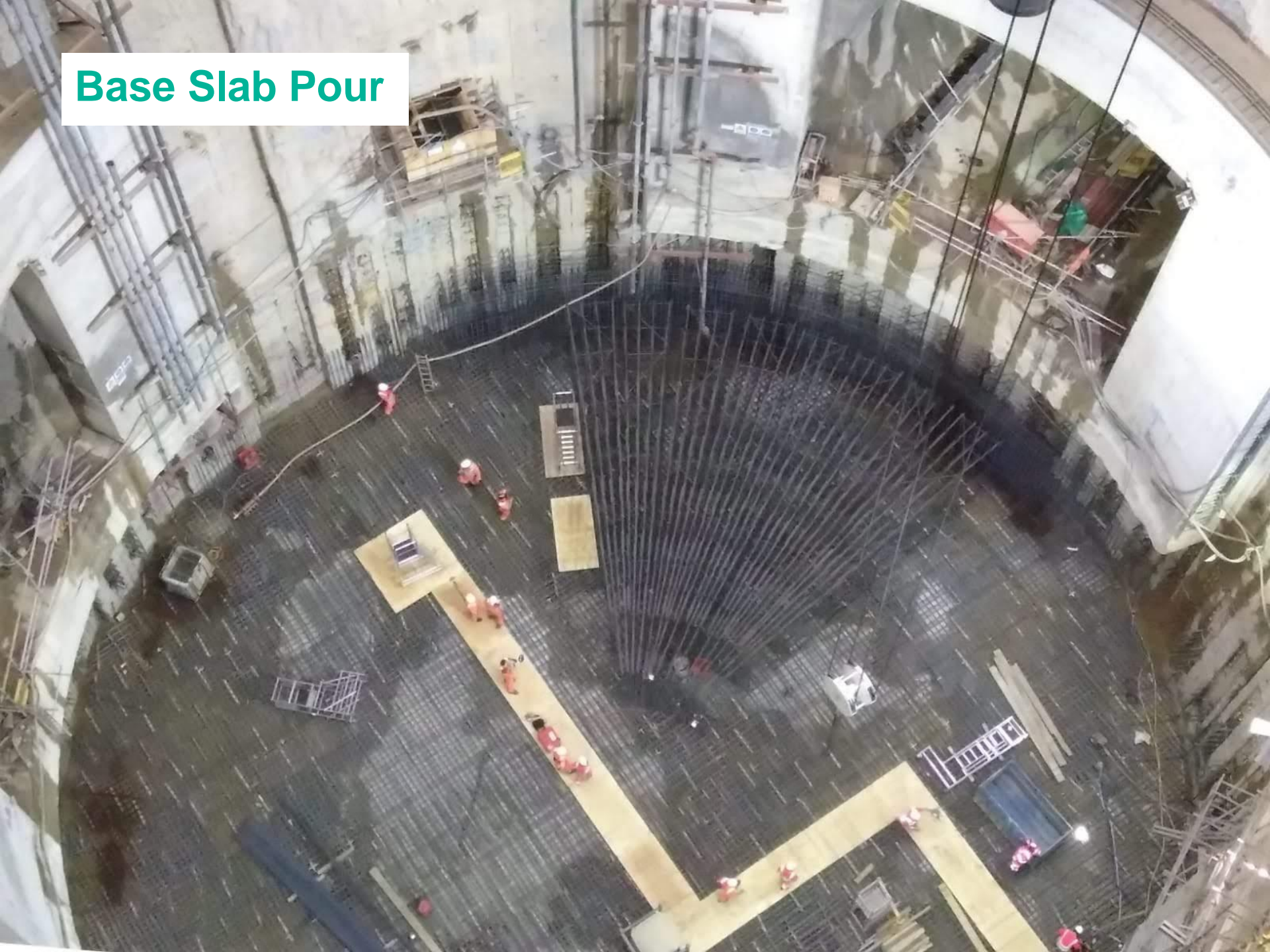
Base Slab Pour



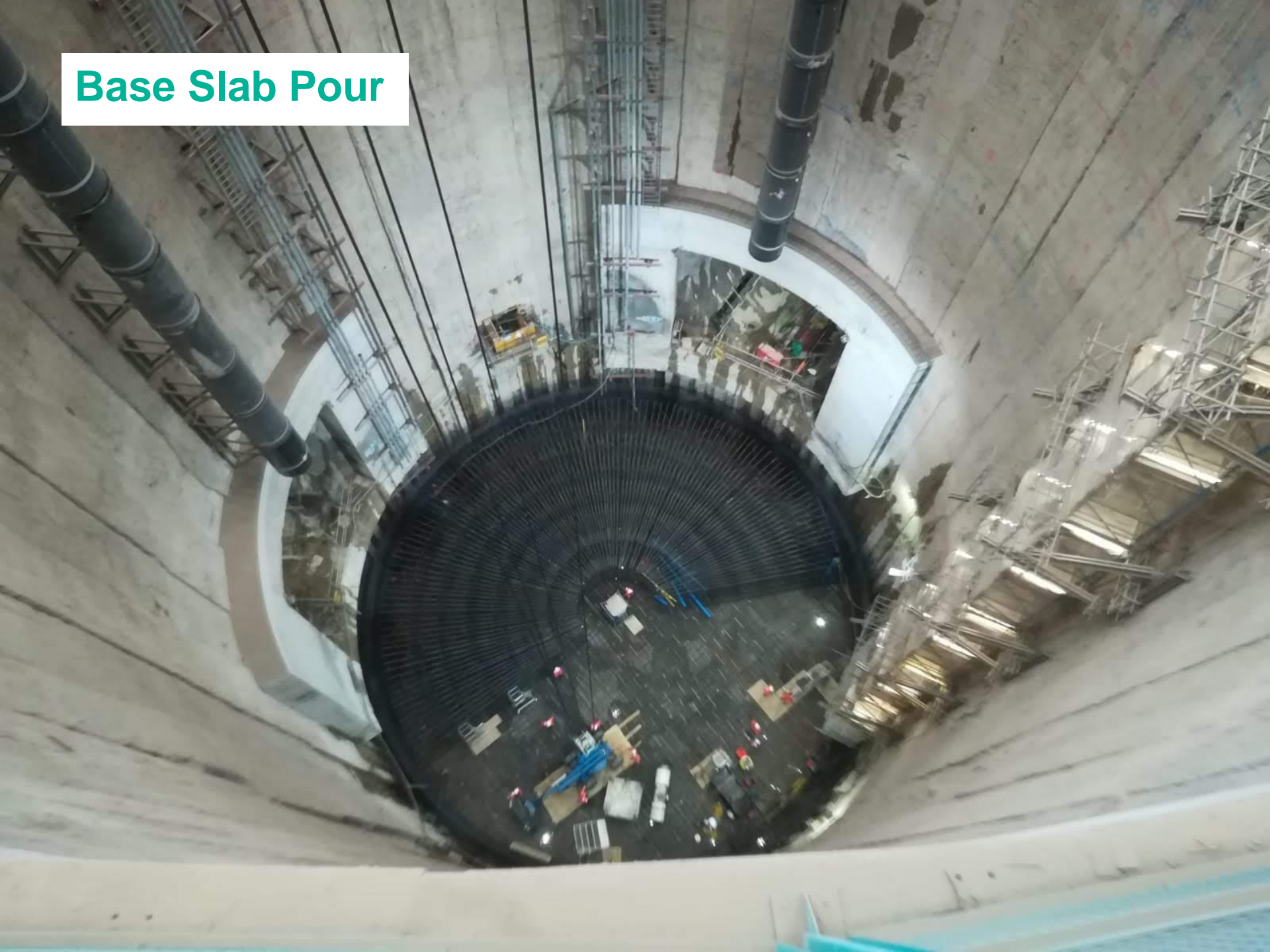
Base Slab Pour



Base Slab Pour



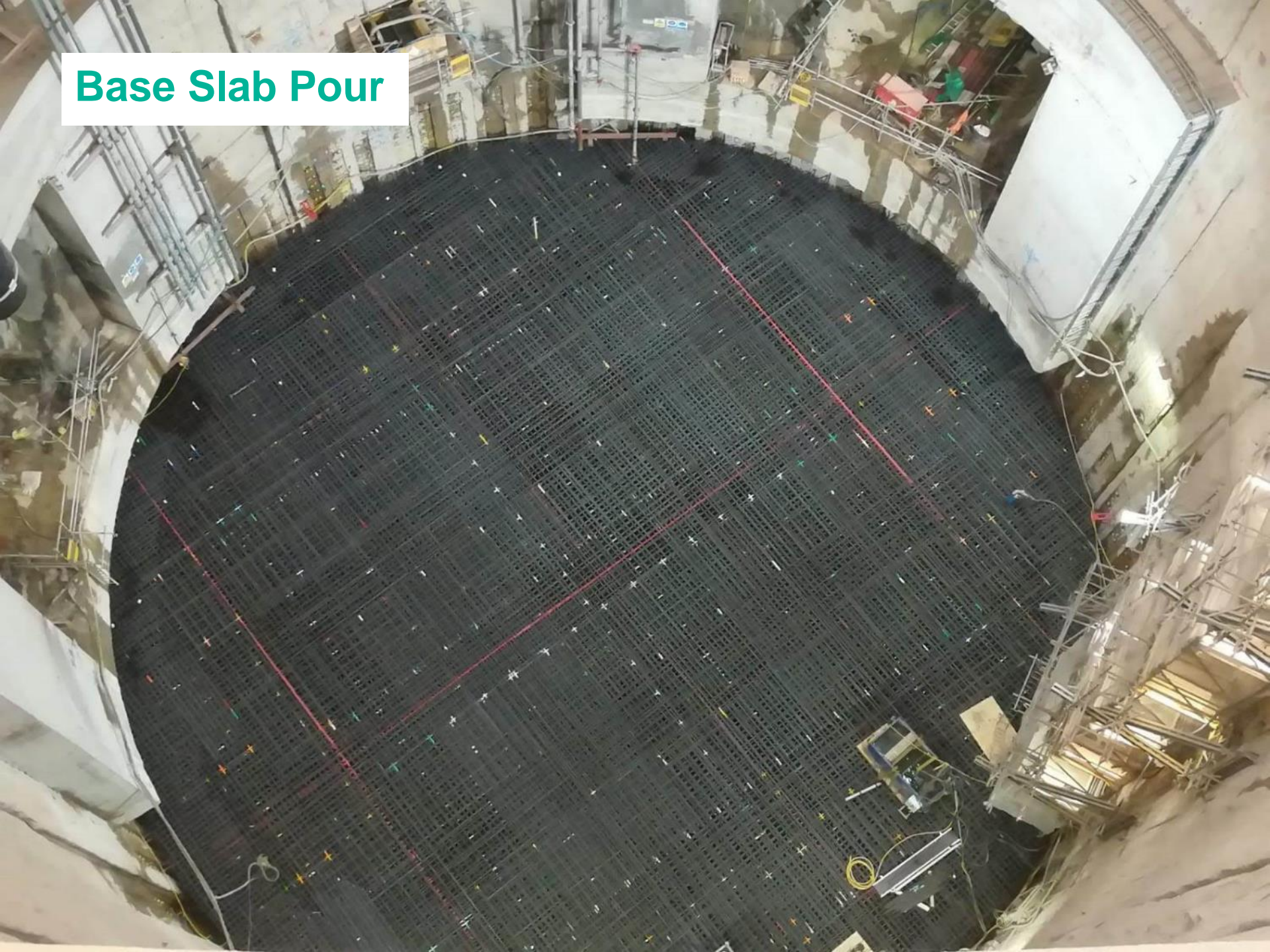
Base Slab Pour



Base Slab Pour



Base Slab Pour



Base Slab Pour



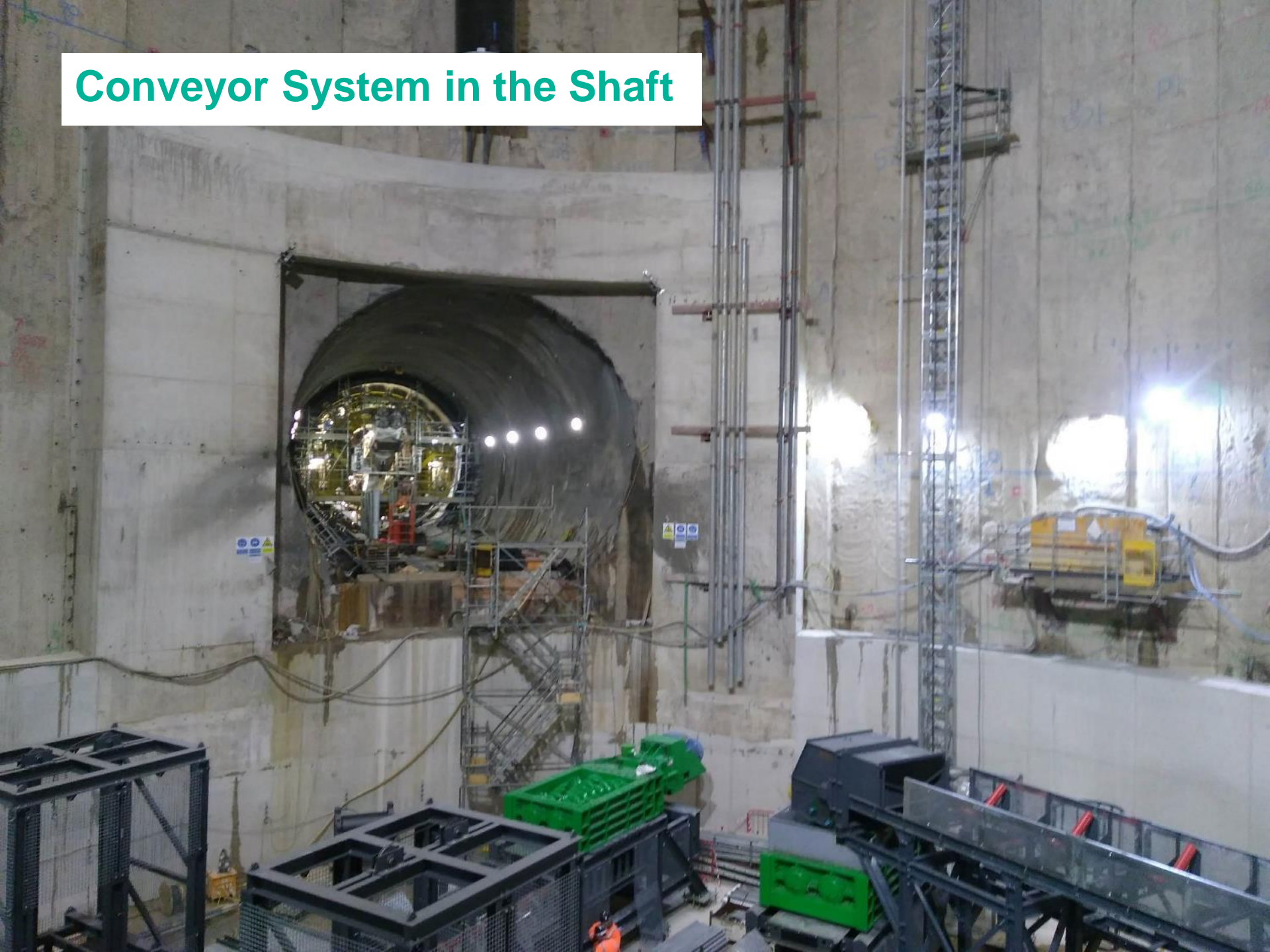
Upright Wall Construction



Upright Wall Construction



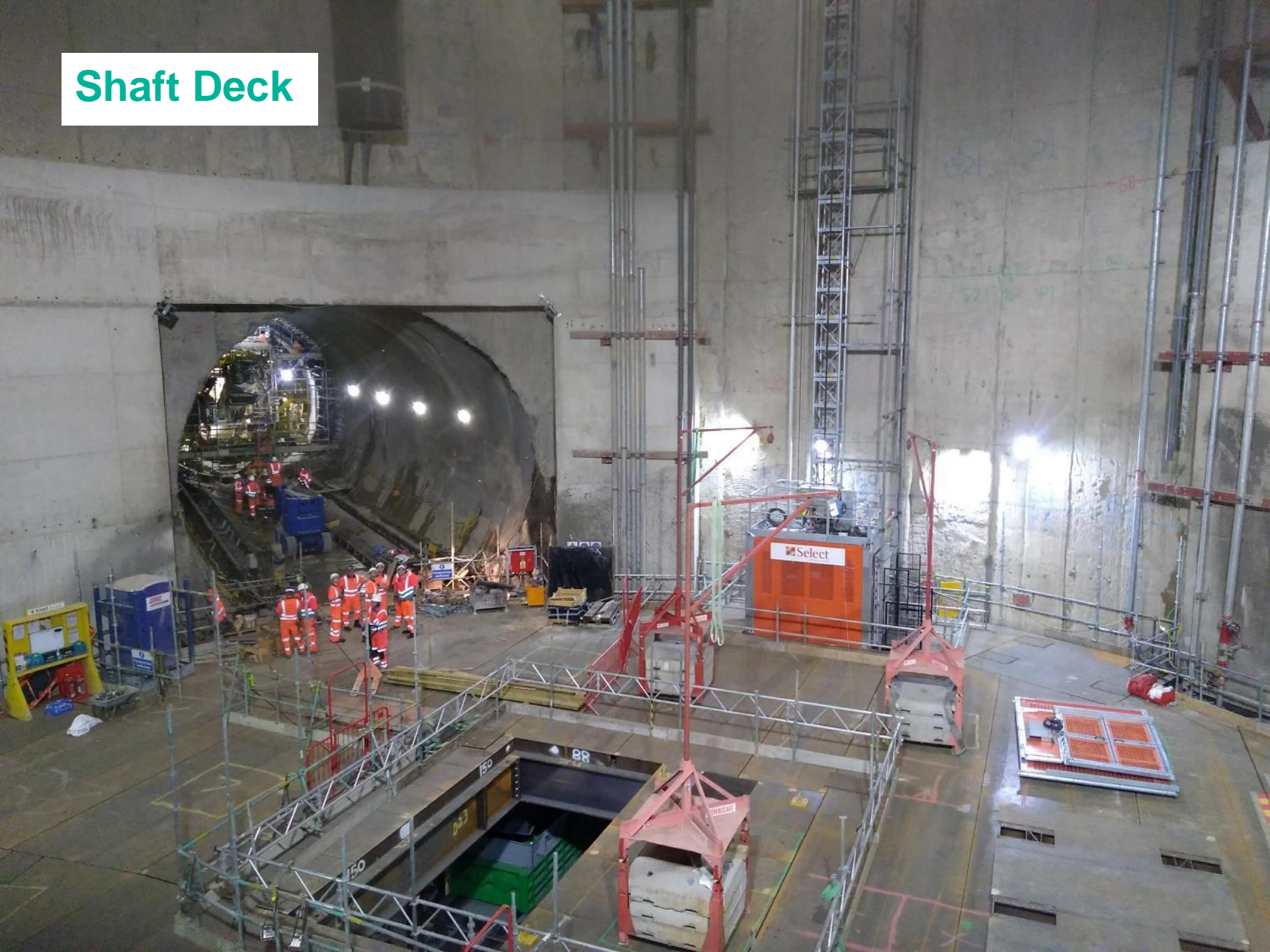
Conveyor System in the Shaft



Shaft Deck



Shaft Deck



Surface Conveyor System



Surface: Water Treatment Plant, Grout Plant, Cooling Water System



Segment Gantry Crane



Burst Thames Water Main



Burst Thames Water Main



Kirtling Street Programme

Kirtling Street Programme

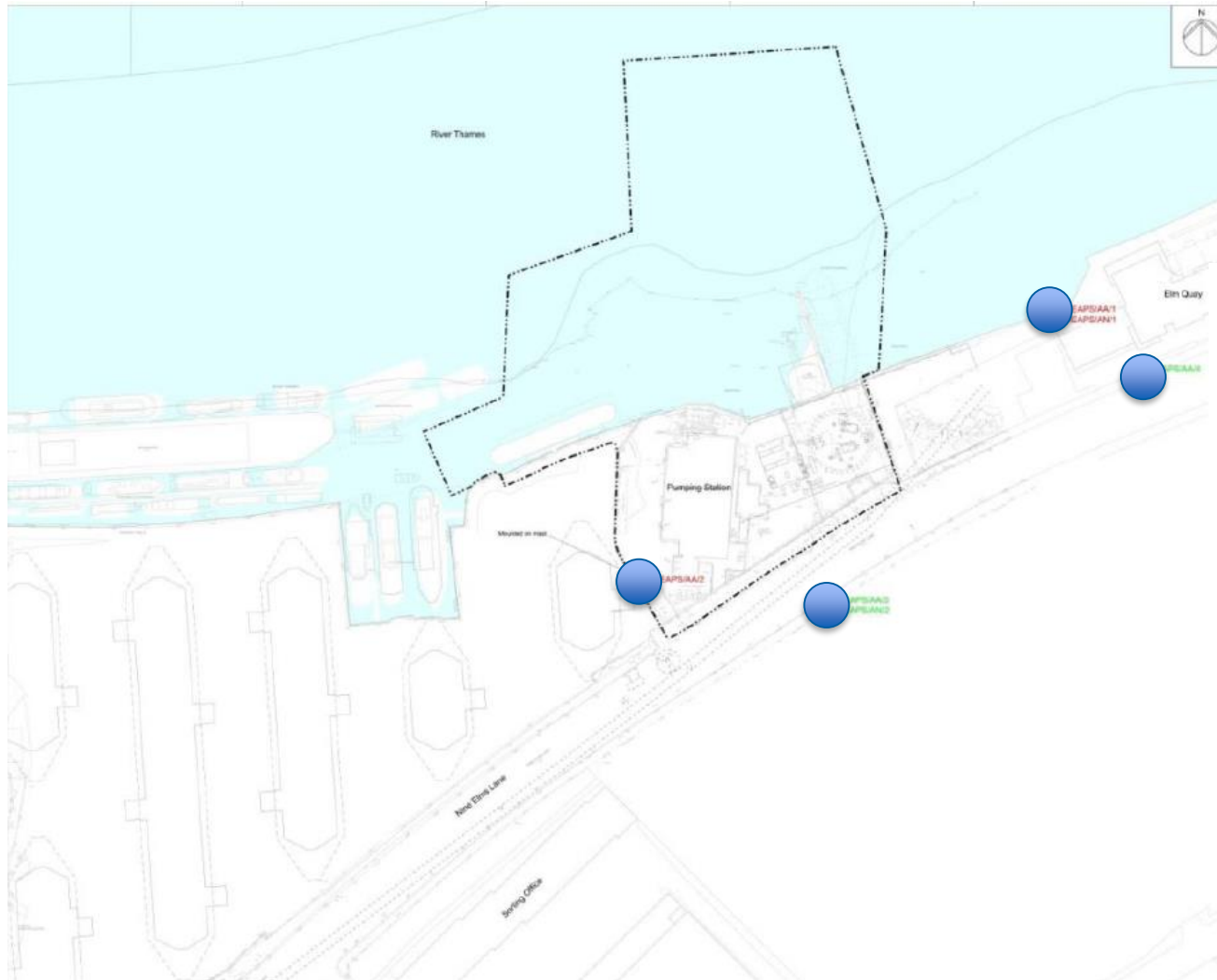
- October:
 - First segment delivery this week
- November
 - Launch First TBM
- February
 - Launch Second TBM

AIR QUALITY

REPORTING

Air Quality Monitor Exceedances

- Heathwall Monitor Locations

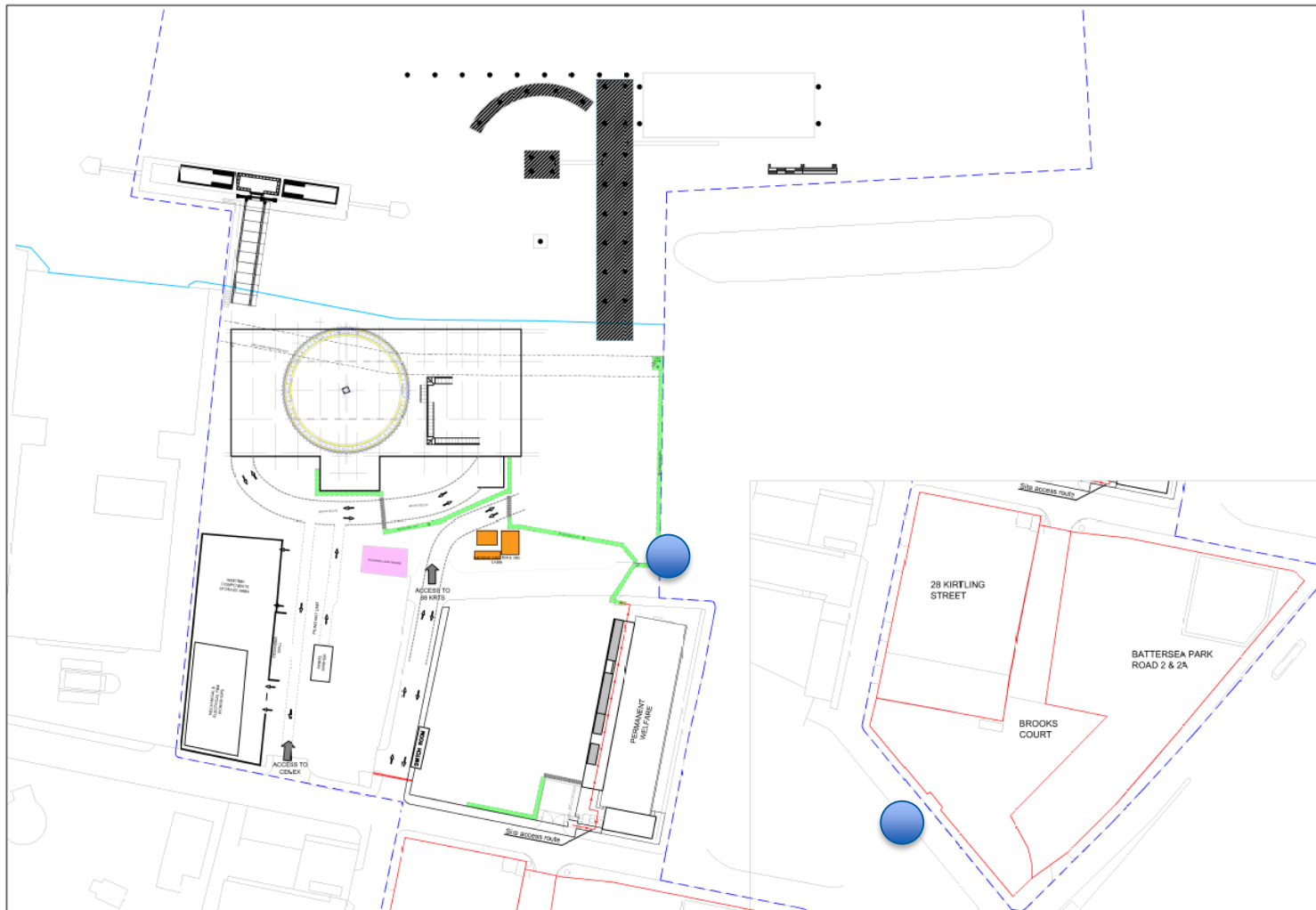


Air Quality Monitor Exceedances - Heathwall

- June:
 - None
- July:
 - None
- August:
 - 09/08/2018 – a couple of exceedances - gritting operations to clear the surface before spraying concrete; works necessary in stopping tidal water seeping into the site
 - 24/08/2018 and 28/08/2018 – a number of exceedances due to grouting directly underneath the monitoring for the installation of the wells on the West compound.
- September
 - 10/09/2018 – an exceedance caused by the proximity of the works to the air quality monitor
 - 20/09/2018 – three exceedances caused by grouting operations taking place directly below the monitor
- October
 - 2/10/2018 – an exceedance - our Road sweeper was sweeping up the muck on west compound which had accumulated around WJ G's rig

Air Quality Monitor Exceedances

- Kirtling Monitor Locations



Air Quality Monitor Exceedances - Kirtling

- June:
 - None
- July:
 - 5 – attributed to work by Thames Water to repair bust water main.
- August:
 - None
- September:
 - None
- October:
 - None

NOISE

REPORTING

Noise Monitor Exceedances

- Heathwall Monitor Locations

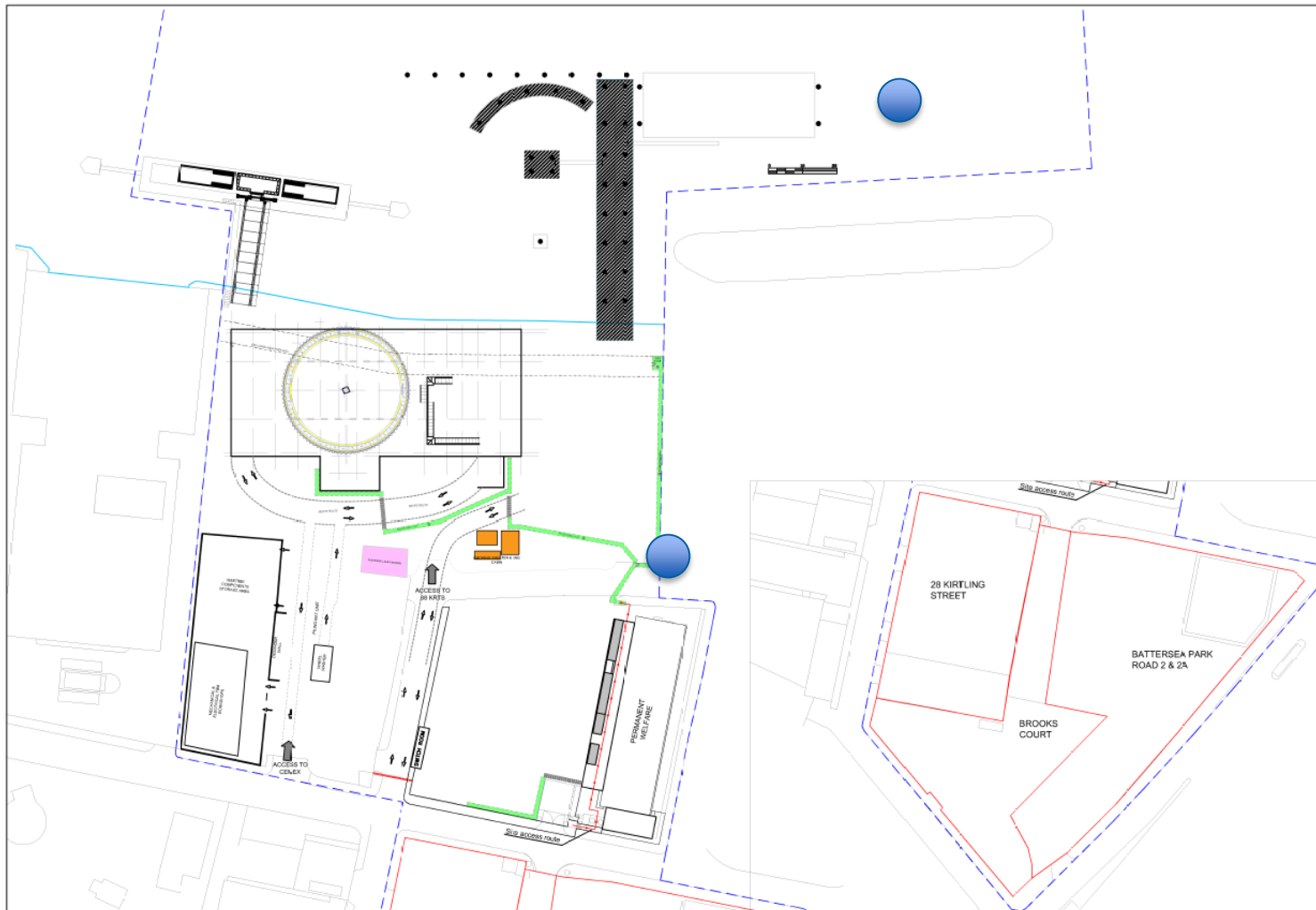


Noise Monitoring Exceedances - Heathwall

- June:
 - None
- July:
 - None
- August:
 - None
- September
 - 09/09/2018 - one exceedance - due to saw cutting in close proximity underneath the monitor
- October:
 - None

Noise Monitoring Exceedances

- Kirtling Monitor Locations



Noise Monitoring Exceedances - Kirtling

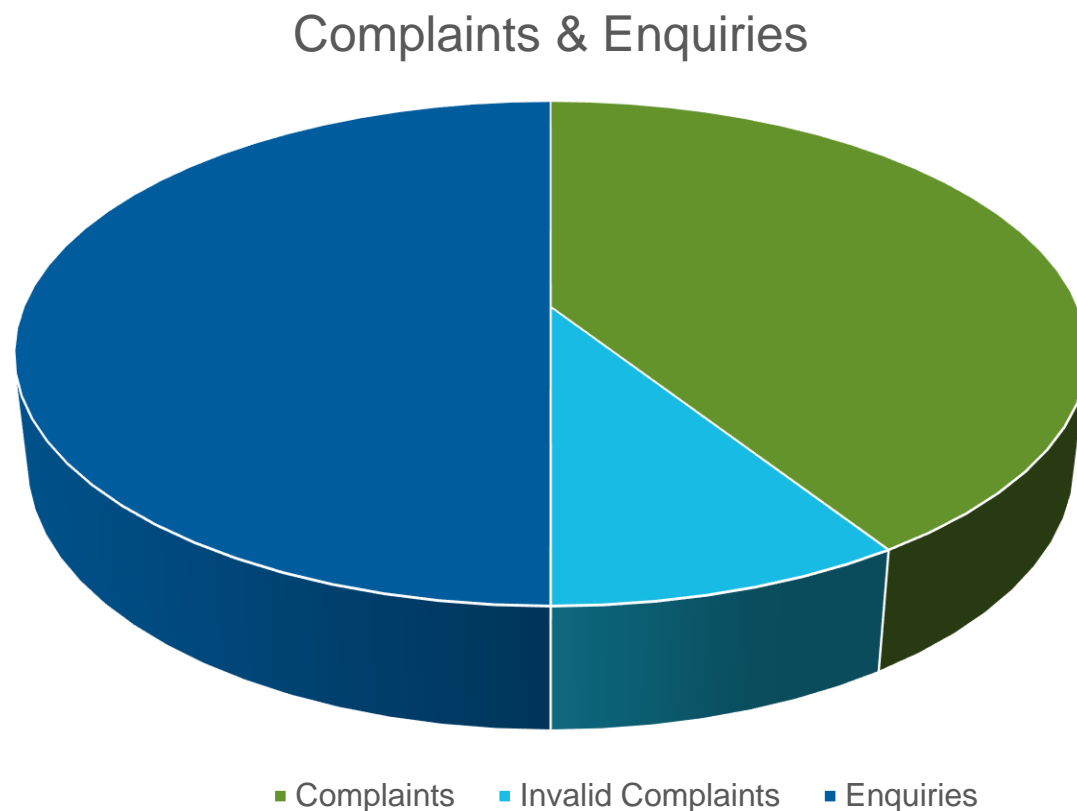
- June:
 - None
- July:
 - 4 – due to works by Thames Water to repair bust water main.
- August:
 - None
- September
 - 08/09/18 – Concrete pour in close proximity to the meter, The pour did not trigger the exceedance but the demobilisation continued after 13:00, into a period with a lower limit, and caused the alert.
- October:
 - None

COMMUNITY ENGAGEMENT

**ALICK WHITFIELD – COMMUNITY RELATIONS
MANAGER**

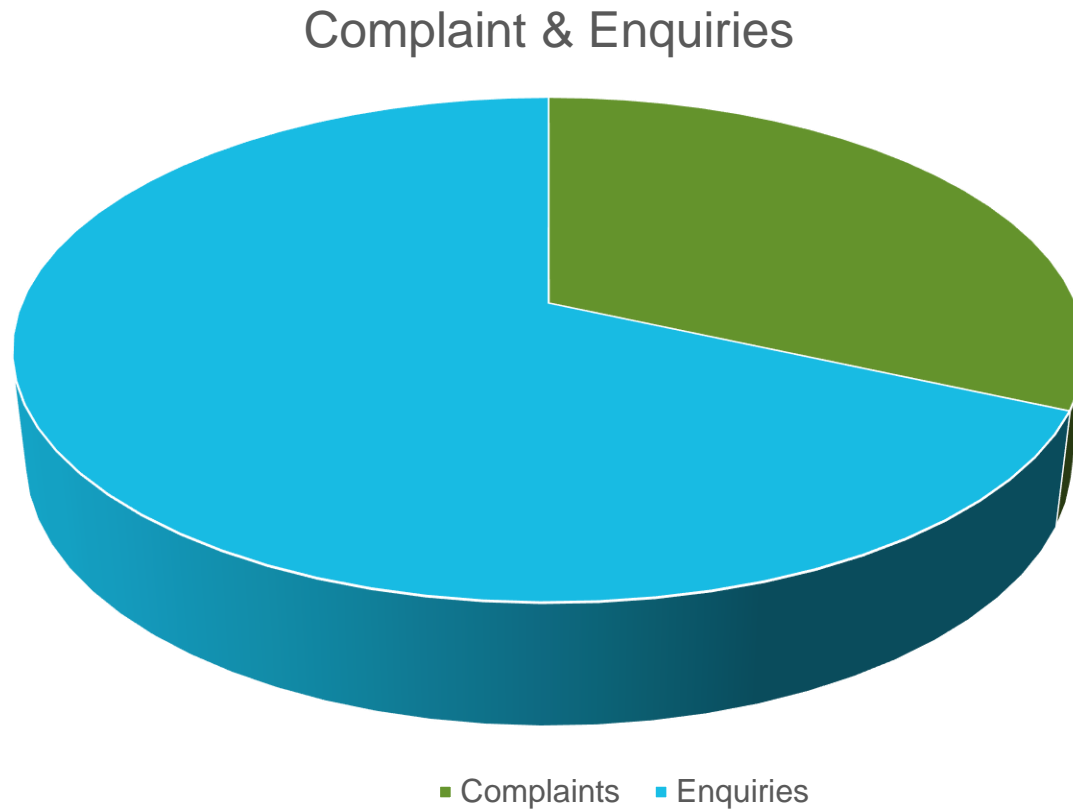
Issues

Complaints & Enquiries register July – October 2018 Kirtling Street



Issues

Complaints & Enquiries register July – October 2018 Heathwall Pumping Station



Update

Communications

- Emails and Information Sheets:
 - Kirtling Street - Gantry Crane installation 18/10
 - Heathwall Pumping Station – Landside works 13/09
 - Heathwall Pumping Station – Marine works 03/08
 - Kirtling Street – Base Slab Pour 17/07
 - Kirtling Street – Telestacker 19/04

Community Engagement

Activities Round Up June – October 2018

236

STEM
hours

394

Contractor Community
Investment
Programme hours

160

Tideway Community
Investment
Programme hours

23

Schools

1343

Beneficiaries

Community Engagement - Ongoing

- Litter Survey and Clean-up in with Thames21 in Battersea
- SPIRAL Education programme - careers
- Boat trip with students from 5 Wandsworth schools
- R.O.S.E Clubroom ongoing discussions regarding improvements and volunteering events
- Bounce Back programme to get ex-offenders into work
- On-going work placement candidate from PIP (Pursuing Independent Paths), working with adults with learning difficulties
- Work Experience for students within the Tideway Central boroughs



Community Investment

- Series of foreshore clean-ups in Battersea with Thames21
- Donation of flowers and plants from Hampton Court Flower Show to R.O.S.E Clubroom and Savona Estate; Falconbrook Primary School and World's End Community Centre
- Supporting 9/11 Memorial Day at R.O.S.E Clubroom with volunteers and materials
- Ongoing school workshops trialling the Virtual Reality TBM
- Supporting the Foreshore Festival with Thames21 and London ZSL
- Work experience and placements for local students and unemployed candidates



UPCOMING ACTIVITIES

- October half-term work experience placements October
- Boat Trip for 5 schools based in Wandsworth
- Science Museum Lates event
- Future Festival – Careers event in Lambeth school
- *If you have any suggestions for community investment, please contact us via the Tideway Helpdesk*

Community Survey

- 14,748 surveys sent out with summer issue of River Times
- 1 response received
- As a result we will be reviewing the need for future surveys and the best way to obtain feedback from residents and stakeholders.

Other Items

Justin Feltham – Environmental Advisor

Greenwall

- Greenwall
 - Start date 29/10/18

COMPENSATION

LOUISE DAVIS

QUESTIONS?

THANK YOU

Contact details:

- **Information helpline: 08000 30 80 80**
- **helpdesk@tideway.london**