



Tideway



**MORGAN
SINDALL**

Balfour Beatty

Hammersmith Pumping Station CLWG

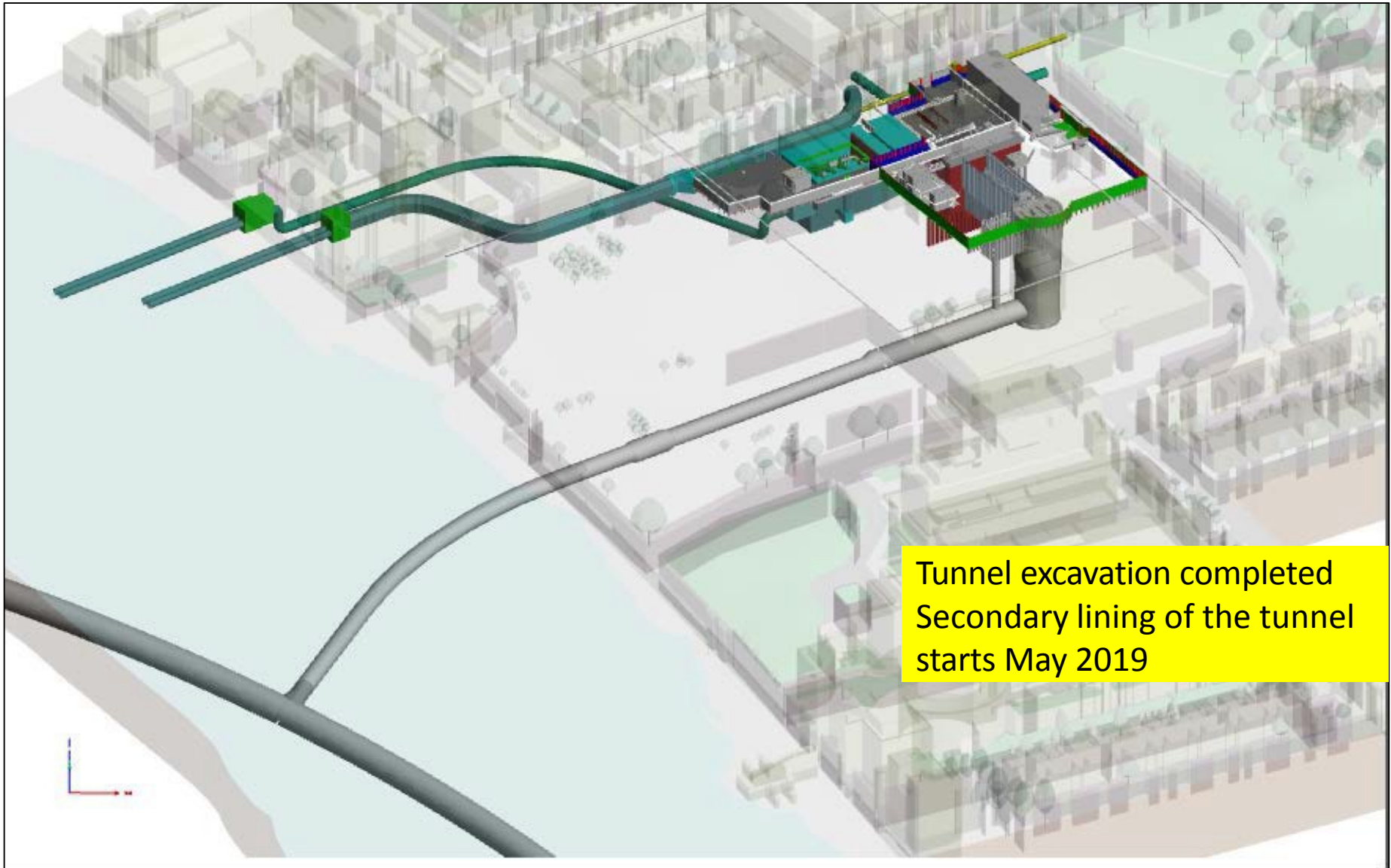
Tuesday 14 May 2019

Progress Update

Aerial View of Hammersmith Pumping Station



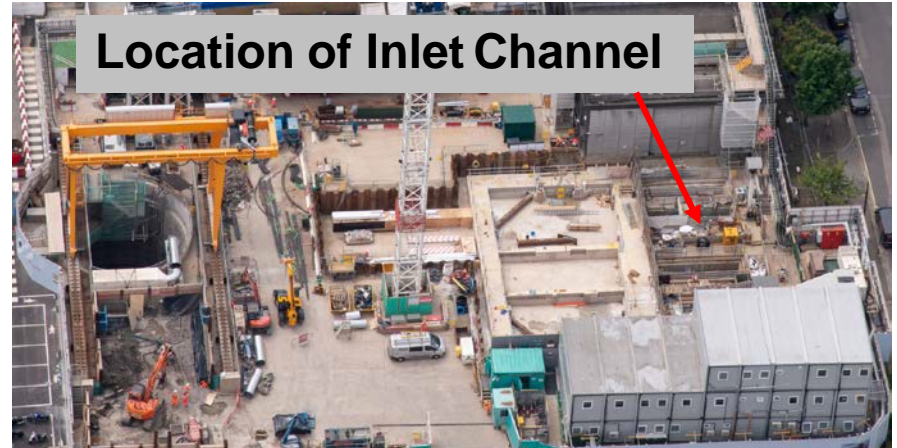
Hammersmith Pumping Station – TidewayWorks



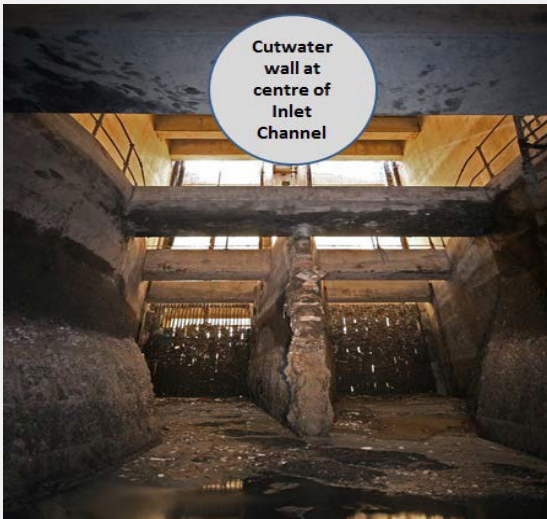
Tunnel excavation completed
Secondary lining of the tunnel
starts May 2019

Works Update - Inlet Channel Works

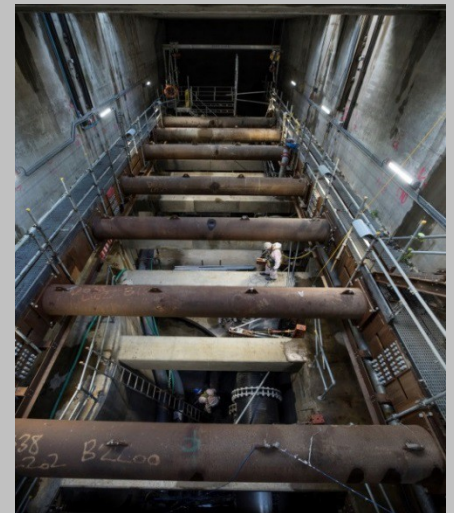
- Phase 1 completed
- Restart Jan 2020
- Weekly entry to monitor for movement



Before



After



Works Update - Interception Chamber

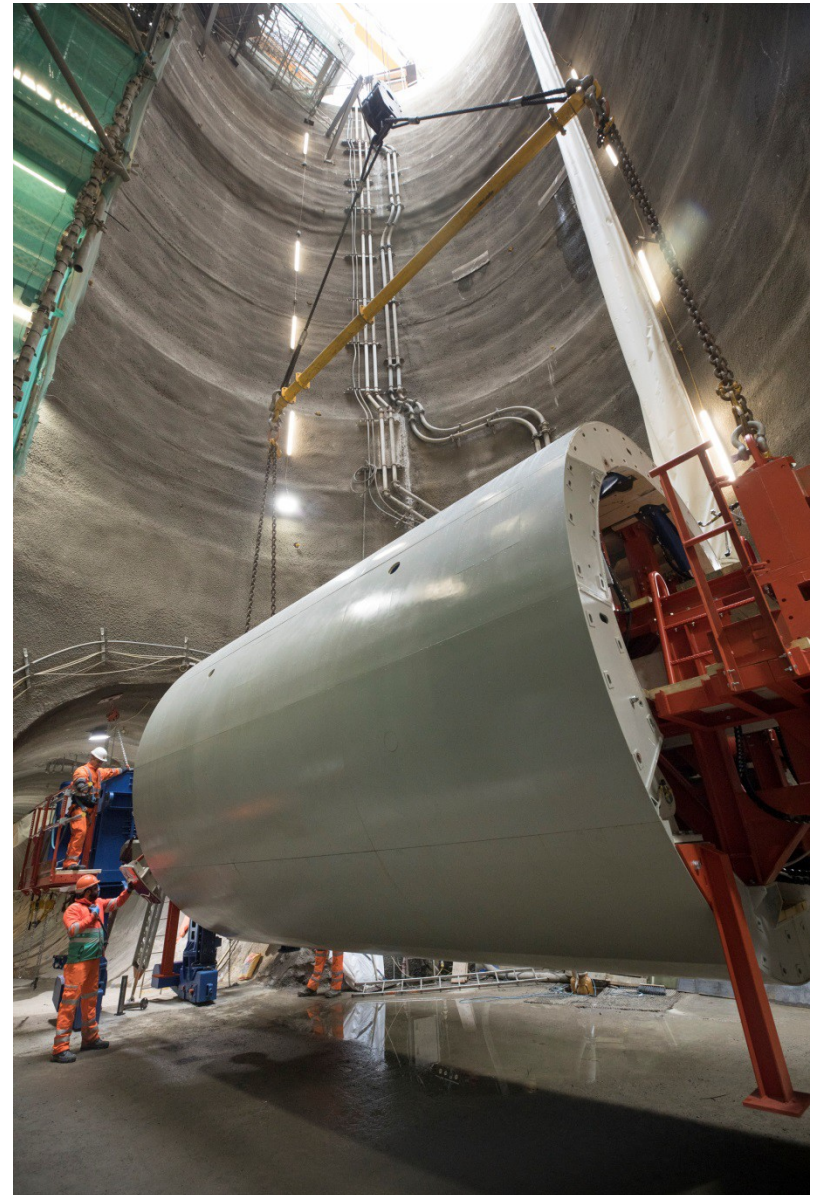
- Concrete upper base slab: 21 May 2019
- Excavation and concrete lower base slab: May – Oct 2019
- Internal walls to continue through to summer 2020

Location of Interception Chamber



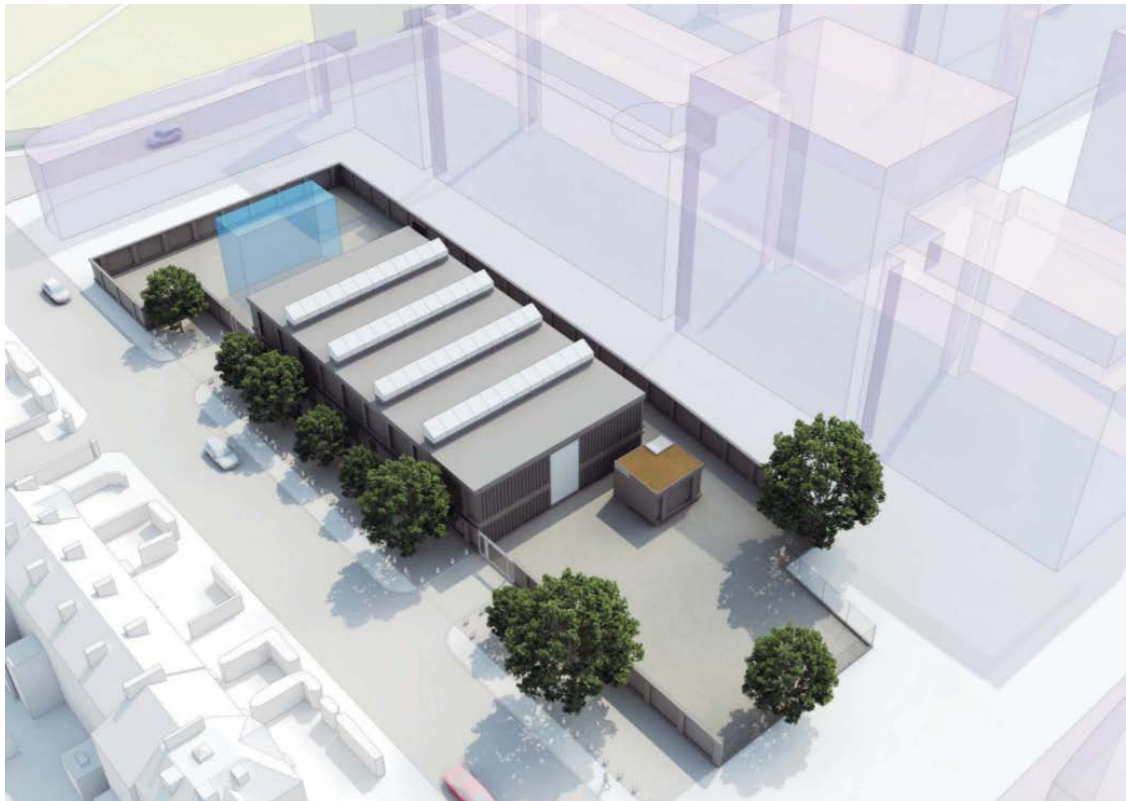
Works Update – Shaft & Tunnel Construction

- **Secondary lining in progress:
May – Sept 2019**
- **Shaft secondary lining:
Nov – Dec 2019**



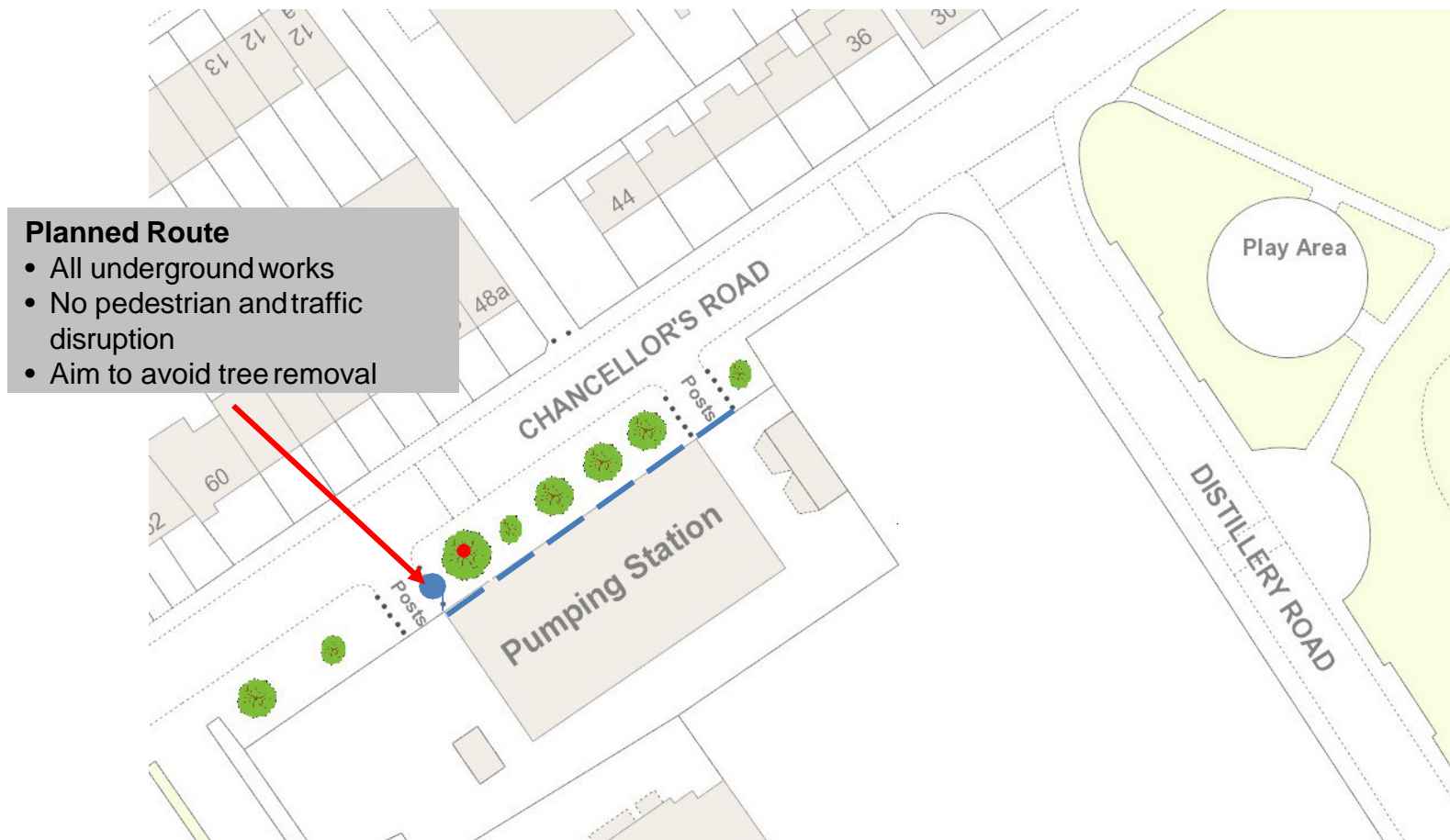
Works Update – Above Ground Design Approval

- Approval received from the London Borough of Hammersmith & Fulham for the permanent above ground design at Hammersmith Pumping Station
- The approval covers the new ventilation structures, boundary walls & fencing, hard surfacing, surface water drainage system and boundary wall design.
- The application is still available to view on the LBHF website



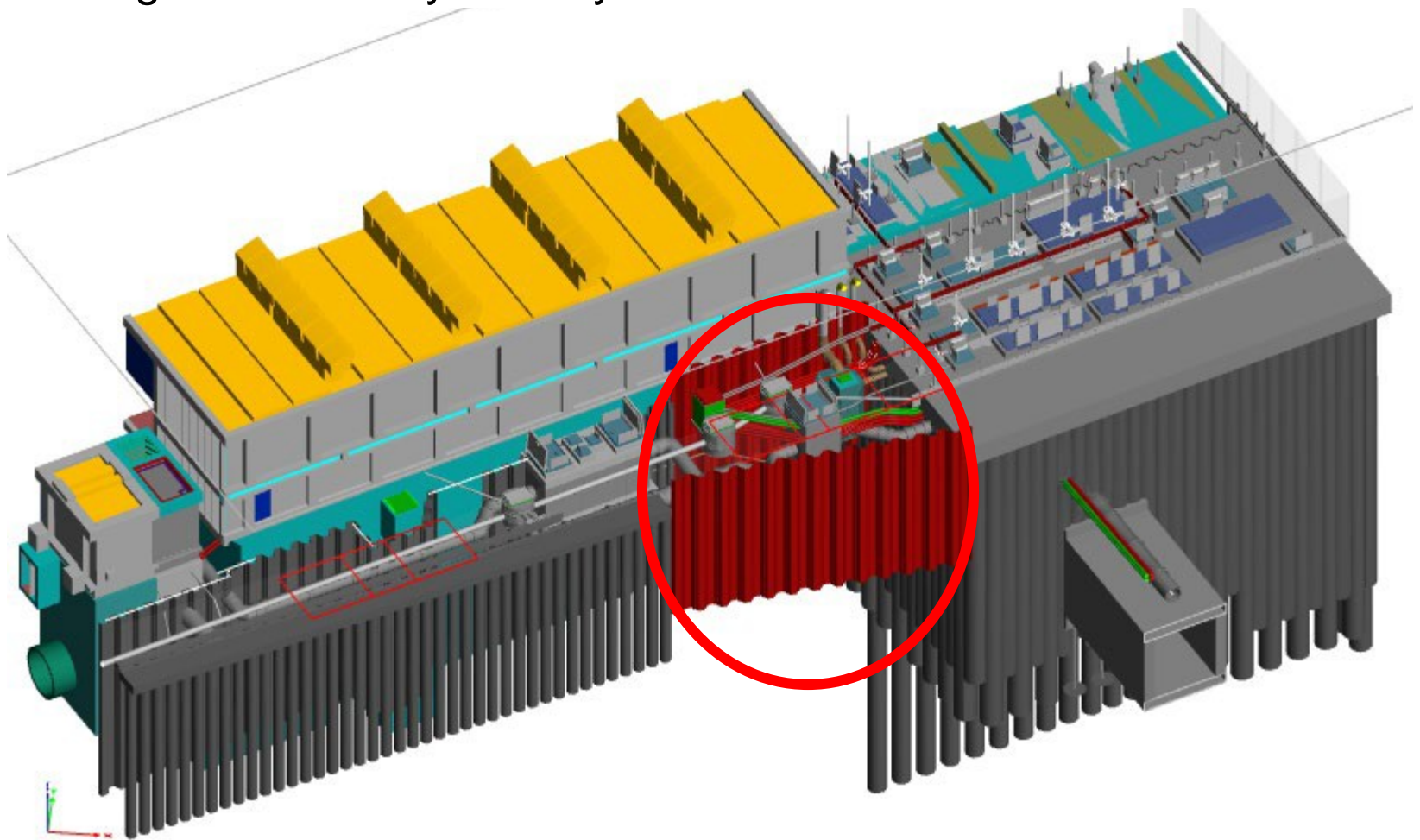
Rising Main Connection

- New rising main connection to sewers in Chancellors Road required
- Works to commence June, completion by end of August 2019



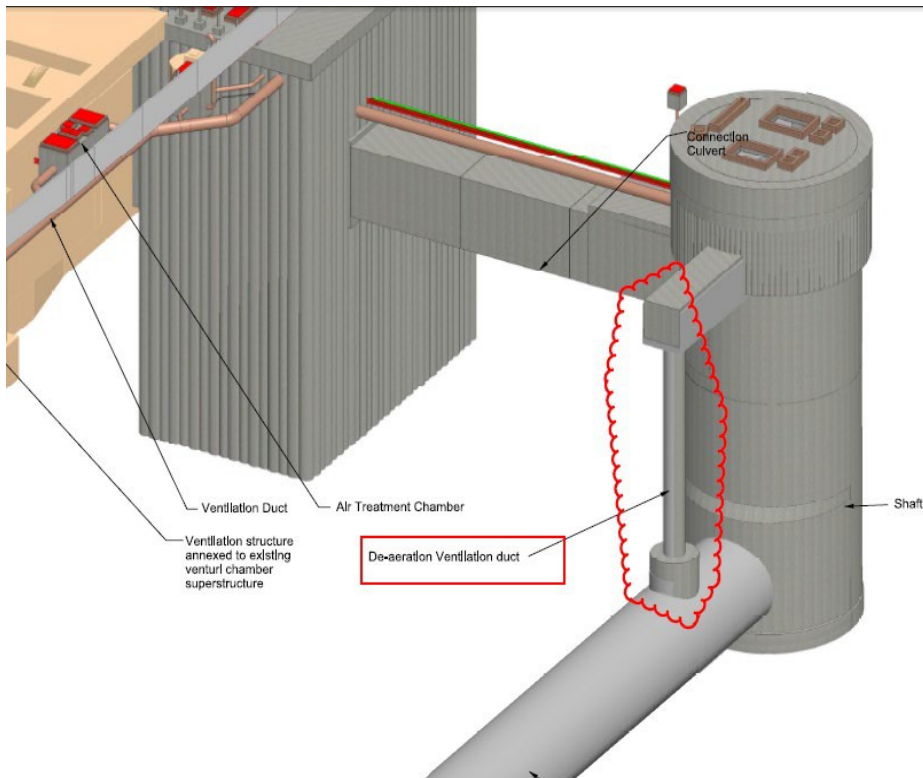
External services

- Limited amount of sheet piling work – similar to that already carried out
- Works to commence late Summer for four months during standard day shift working hours Monday – Friday



De-Aeration Shaft

- One week's work: End of June
- Installation of at 1.9m diameter, 27m long steel pile
- Large piling rig required on site to undertake rotary bored piling



Short Term Look Ahead (next 3 months)

	April	May	Jun	Jul	Aug	Sep	Oct
Tunnel Construction	Active	Active	Active	Active	Active	Active	Active
De-aeration Tube - single pile excavation & casing	Active	Active	Active	Active	Active	Active	Active
Pipeline installation along Chancellor's road	Active	Active	Active	Active	Active	Active	Active
Site-wide External Underground Services	Active	Active	Active	Active	Active	Active	Active
Interception Chamber - Excavate / Concrete	Active	Active	Active	Active	Active	Active	Active

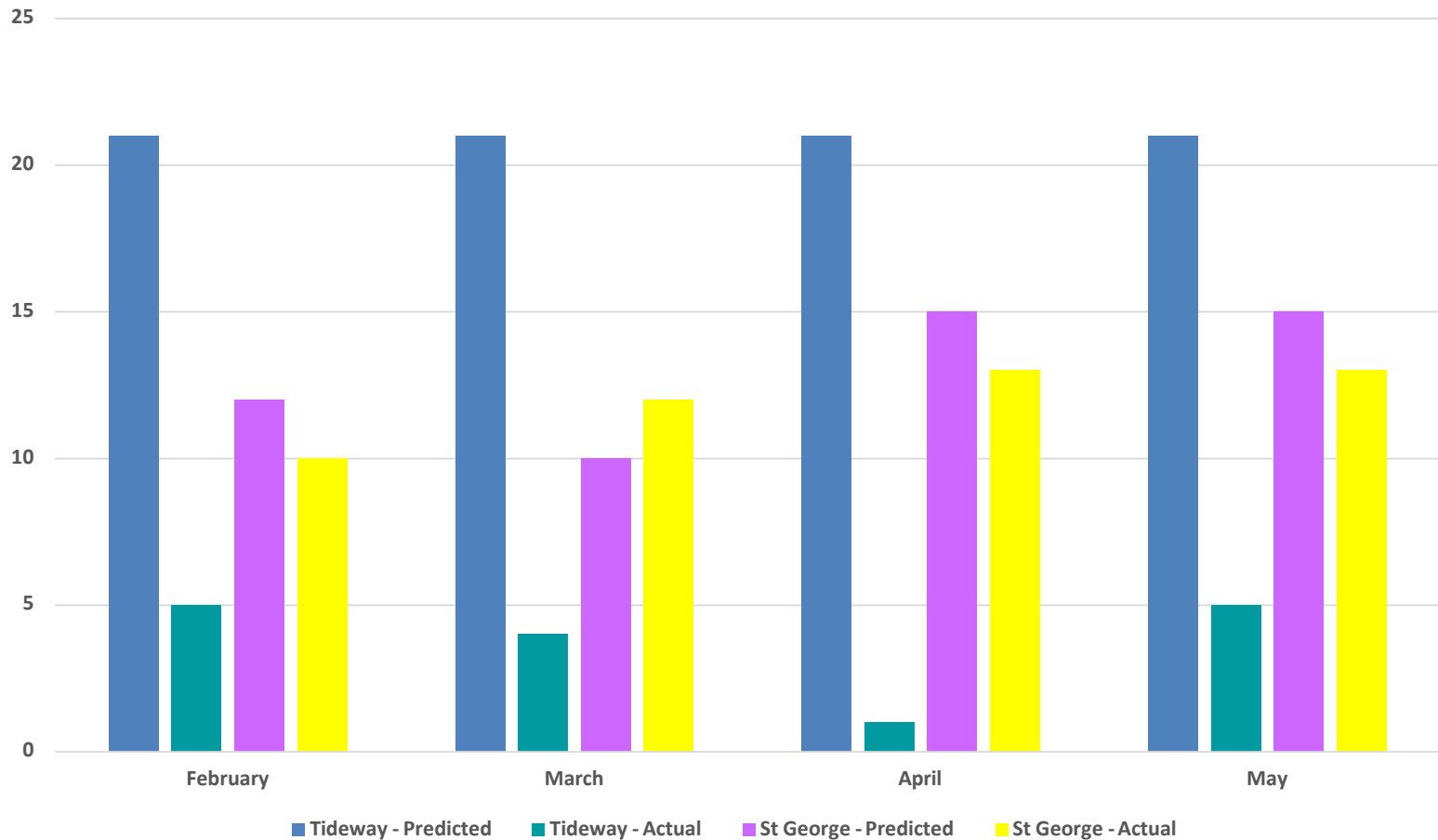
- Core working hours 8am-6pm Monday-Friday and 8am-1pm Saturday
- One hour startup and shutdown periods either side of working hours
- Tunnel construction extended day-shift working, Monday - Friday (planned)
- Tunnel consented extended working 8am-10pm, Saturday till 1pm
- Tunnel concrete lining of excavated tunnel till Oct-2019

Night time working

- Currently no night working: Site hours are 8am – 6pm
- Shaft slip-form concrete works
 - Potential for extended hours when slip-forming the shaft over three 5-day periods
 - Aim to limit the extended hours to 10pm at night
 - Currently reviewing with specialist suppliers
 - Works to commence November
- Potential to extend the tunnel secondary lining works to 10pm, to assist in achieving the programme durations: May – Sept 19
- No other extended hours worked expected, other than isolated long concrete pours

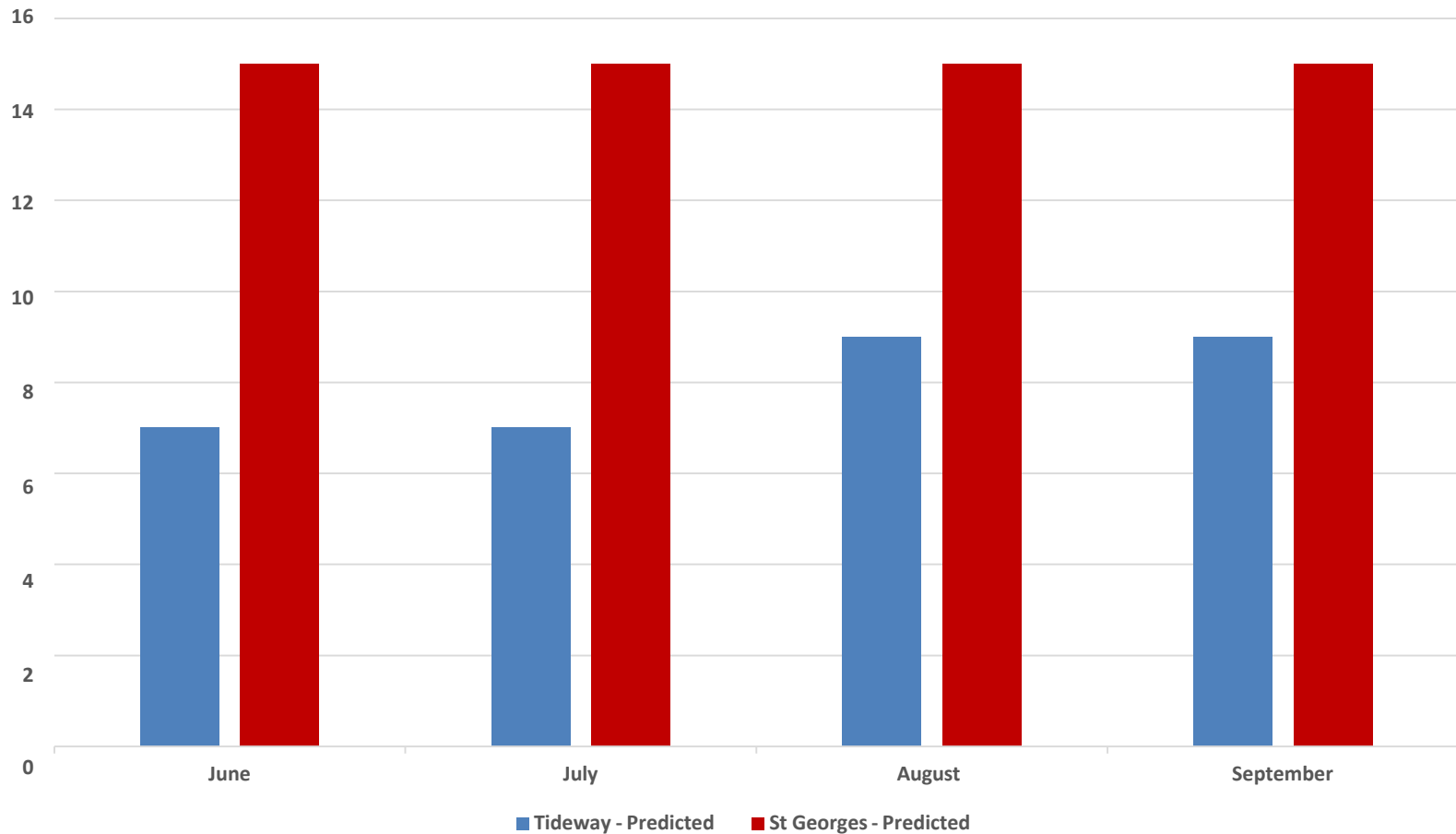
Predicted and Actual Vehicle Movements: February 2019 – May 2019

Vehicle Movements into Site (Monthly Daily Average)



Predicted Forecast Vehicle Movements: June to September 2019

Vehicle Movements into Site (Monthly Daily Average)



Community Engagement

Community Engagement and Complaints

7 Complaints / Enquiry received since last meeting:

1. **3 x Noise complaints regarding concrete silo's** – *Residents were advised that we was required to empty the silos which resulted in vibration noise*
2. **2 x Concrete breaking out works taking place on a Saturday morning** – *We advised that any further breaking out works for this activity would be carried out during our standard working hours Monday – Friday between 8am – 6pm*
3. **1 x Odour concern** – *Resident was advised Tideway works will not increase odour in the area and provides a facility to considerably alleviate the issue*
4. **1 x Alarm noise** – *Advised resident we had a faulty sensor on our tunnel alarm which sounded. Alarm sensor replaced*

Enquiries responded to within 24 hours



Call: 08000 30 8080
Email: helpdesk@tideway.london
Write to: FreepostTIDEWAY



0800 316 9800

Available 24 hours, 7 days a week
To answer all enquiries and complaints related to
the operations and maintenance of the site

HOW TO MAKE A CLAIM IF YOU ARE AFFECTED BY TIDEWAY'S WORK

Who do I go to for advice?

- Independent Advisory Service (IAS) Helpline for independent advice: **0800 917 8845** or info@tidewayias.co.uk
- Tideway's Compensation Officer, **Louise Walsh**, for personal assistance and advice: via Tideway Helpdesk **08000 30 80 80** or helpdesk@tideway.london or direct **07971 077165** or louise.walsh@tideway.london

How do I submit my claim?

- Louise can submit your claim to the Independent Compensation Panel (ICP) on your behalf, or
- You can submit your claim direct to the [ICP: admin@tidewayicp.london](mailto:ICP:admin@tidewayicp.london)
- The IAS can send you a claim form, or you can download a claim form off [the Tideway website: www.tideway.london/help-advice/compensation-information/Independent-Compensation-Panel](http://www.tideway.london/help-advice/compensation-information/Independent-Compensation-Panel)

BMB Tideway West Legacy

Legacy since 2016	Hammersmith and Fulham
Community Investment Hours	1816
STEM Hours	1288
Work Experience Placements	15
Summer Placements	4
Schools Engaged	13
BMB staff residing in LBHF	80

BMB Tideway West Legacy



Hammersmith Achievements

1. Tideway site of the year
2. Morgan Sindall site of the year
3. Inlet Channel works received safest workplace of the year
4. Considerate Construction Scheme - Bronze
5. General Forman received Safety Leadership of the year



Questions