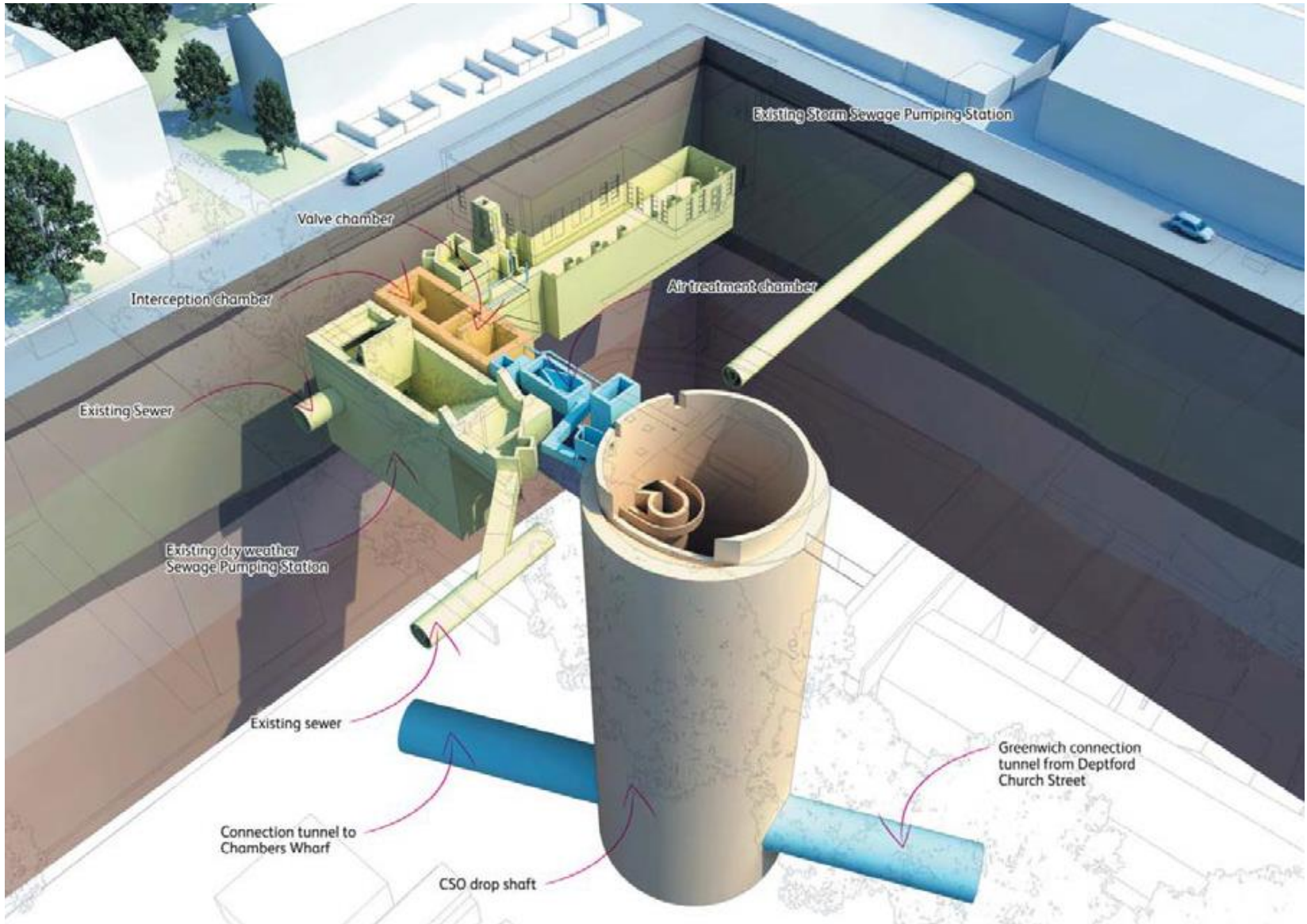




Tideway

**Earl Pumping Station
Community Liaison Working Group
Monday 3 June 2019**

What we're building



CONSTRUCTION UPDATE



24 hour ground water pump test – this week

- Inside the shaft's footprint we have drilled three 72 metre deep boreholes
- This week, between **6-10 June**, we plan to pump water out of each borehole
- The pump will run for 24 hours at a time
- This will help us understand the flow and depth of groundwater, ahead of any excavation inside the shaft
- The pump will run off the electrical mains and is not anticipated to be audible outside of the site

Construction of the shaft's capping beam

Continue into July

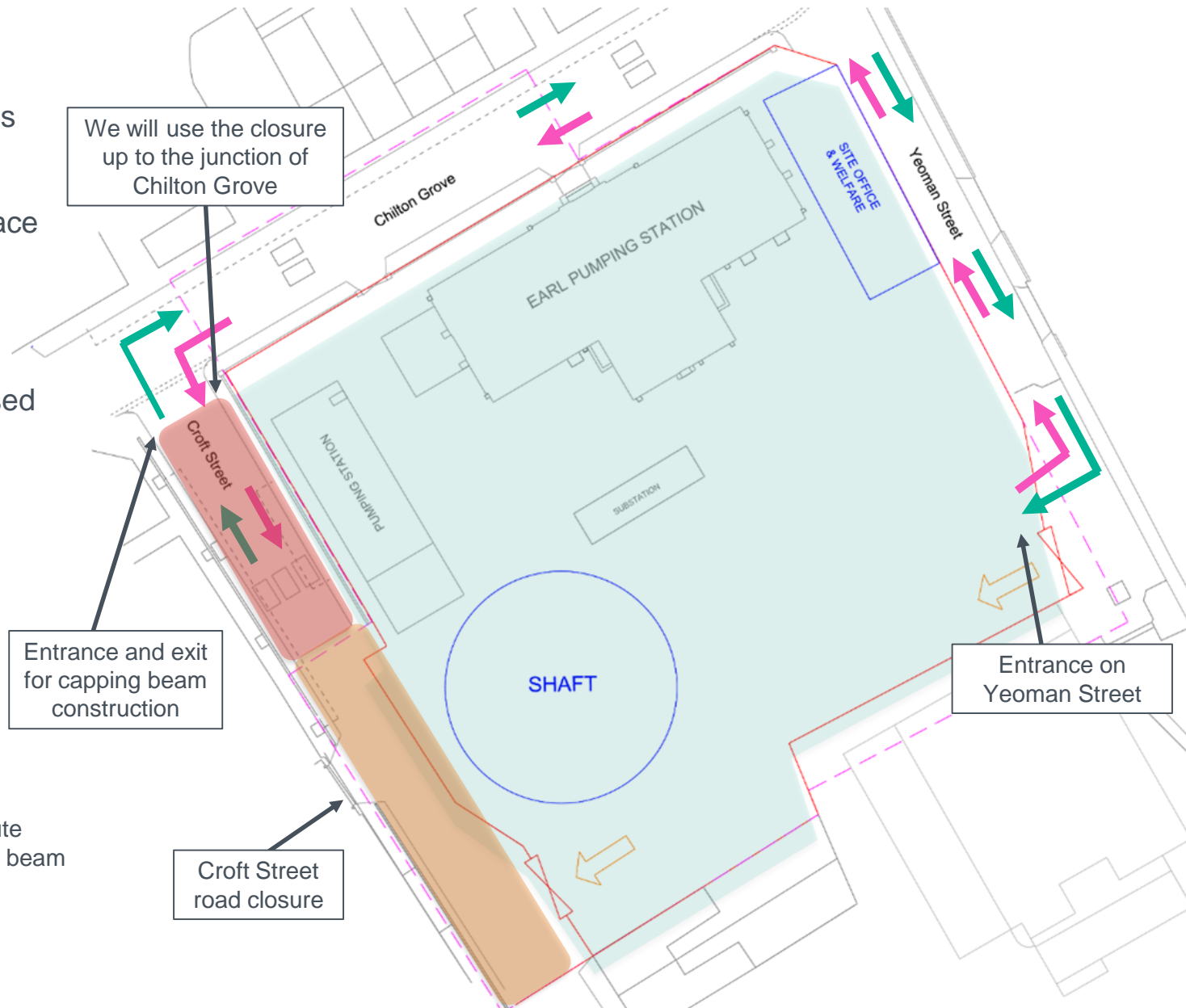
- The capping beam is a reinforced concrete structure to form the top of the shaft
- Construction will include removing the tops of the diaphragm walls and surrounding platform foundations
- A majority of the concrete will be saw cut (reducing direct breaking) and then broken off site, although there will be some direct breaking required, using a concrete breaker
- The capping beam will be concreted in two sections (one day each). This may take place in extended working hours (up to 22:00), as concrete must be poured continuously to ensure a consistent quality of the structure.

Example of a capping beam at the top of a shaft



Traffic management during capping beam construction

- Temporarily use both Yeoman Street and Croft Street for access and egress
- This is due to site space constraints on site during capping beam construction
- Croft Street will be used for a small amount of deliveries
- All vehicles will continue to access Yeoman Street from Plough Way



Existing route

Occasional route during capping beam construction

Croft Street road closure

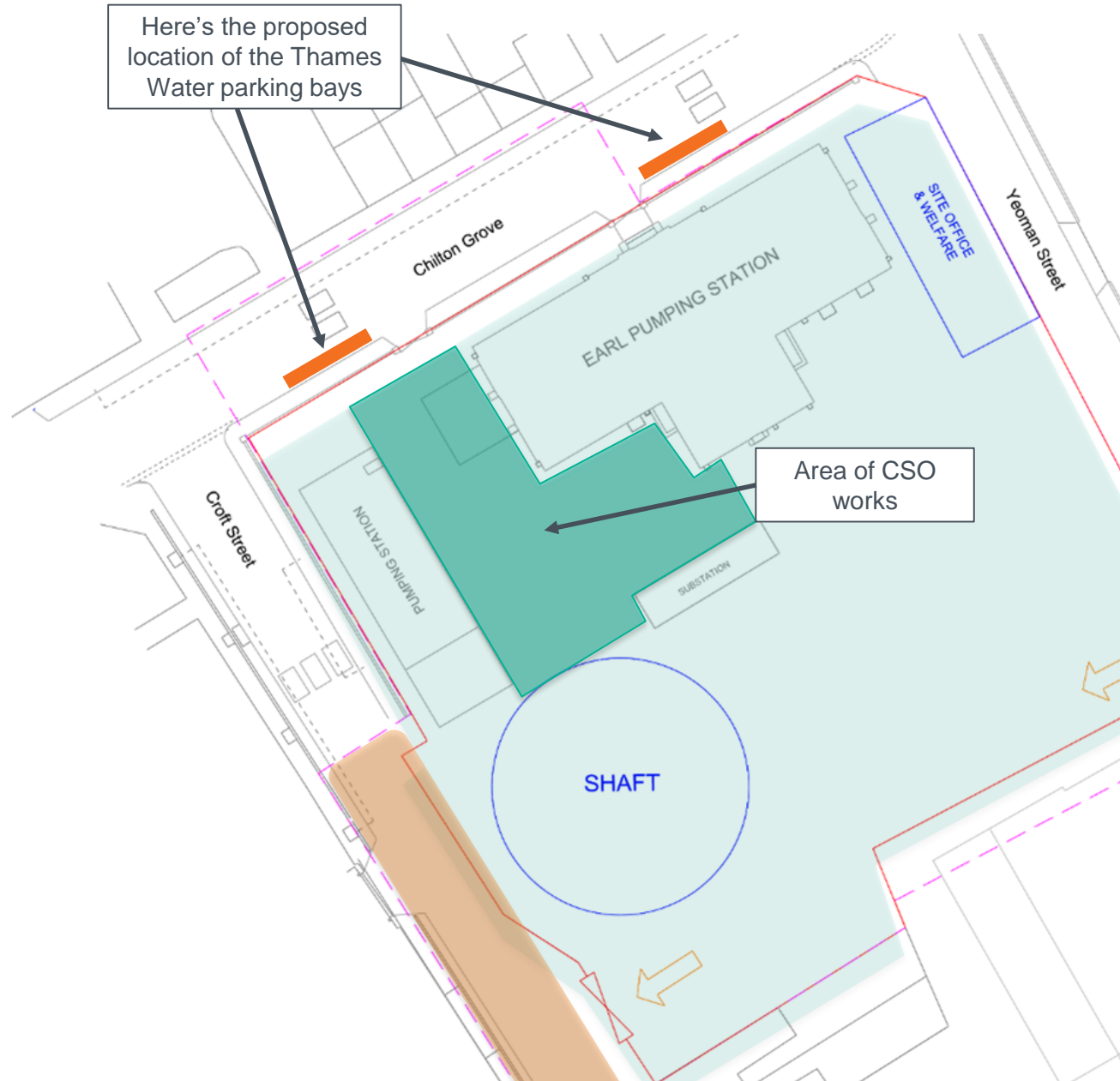
CSO and sewer investigations

- We will be building a combined sewer outfall (CSO). This will connect our shaft (and tunnel) to the existing sewer network
- Ahead of construction, we are undertaking ground and asset investigations
- To date, we have started borehole drilling and completed a survey of the existing sewer networks
- We will finish investigations this month
- Next we will start utility diversions and platform construction in this area of the site, with construction of the CSO planned in 2020



Parking bays for Thames Water on Chilton Grove

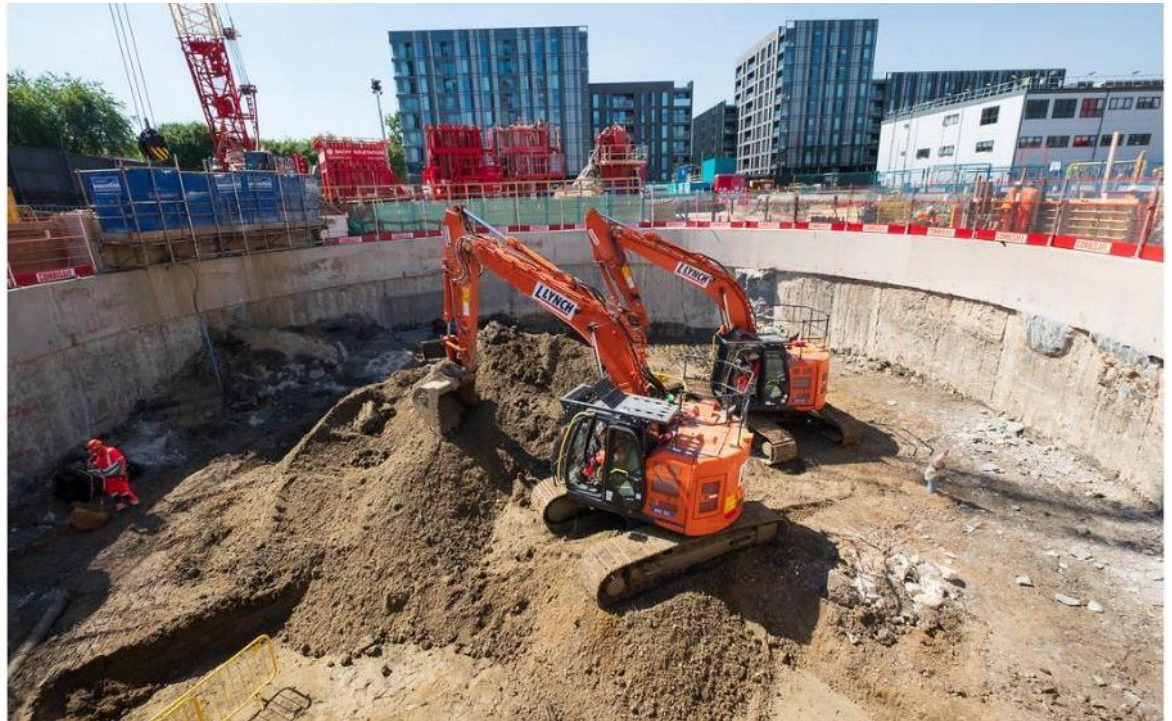
- CSO works are in Thames Water's area of the site, including their onsite parking
- There will be 2-4 parking bays installed on the western side of Chilton Grove
- This is to ensure Thames Water staff always have access to the pumping station



Shaft excavation in the Summer - from August



- Excavation will consist of digging and removing spoil using excavators and the use of a crane for lifting excavated spoil into the muck bin. There will be an increase in vehicle movements during this activity
- This will continue until we have dug out the shaft to a depth of approx. 50 metres
- Periodic concrete breaking may be required
- Once below 5 metres deep we may work extended working hours (up to 22:00)

Example of excavation inside the shaft



Programme

Programme Overview																	
	June	July	Aug	Sept	Oct	Nov	Dec										
Shaft ground water test (running a water pump for 24hrs at a time)	█																
Shaft capping beam (extended hours for 2 concrete pours)	█	█	█	█	█												
CSO investigations	█	█															
Shaft excavation (extended hours once below 5 metres in depth)					█	█	█	█	█	█	█	█	█	█	█	█	█
CSO preparation works (utility diversion and platform construction)										█	█	█	█	█	█	█	█

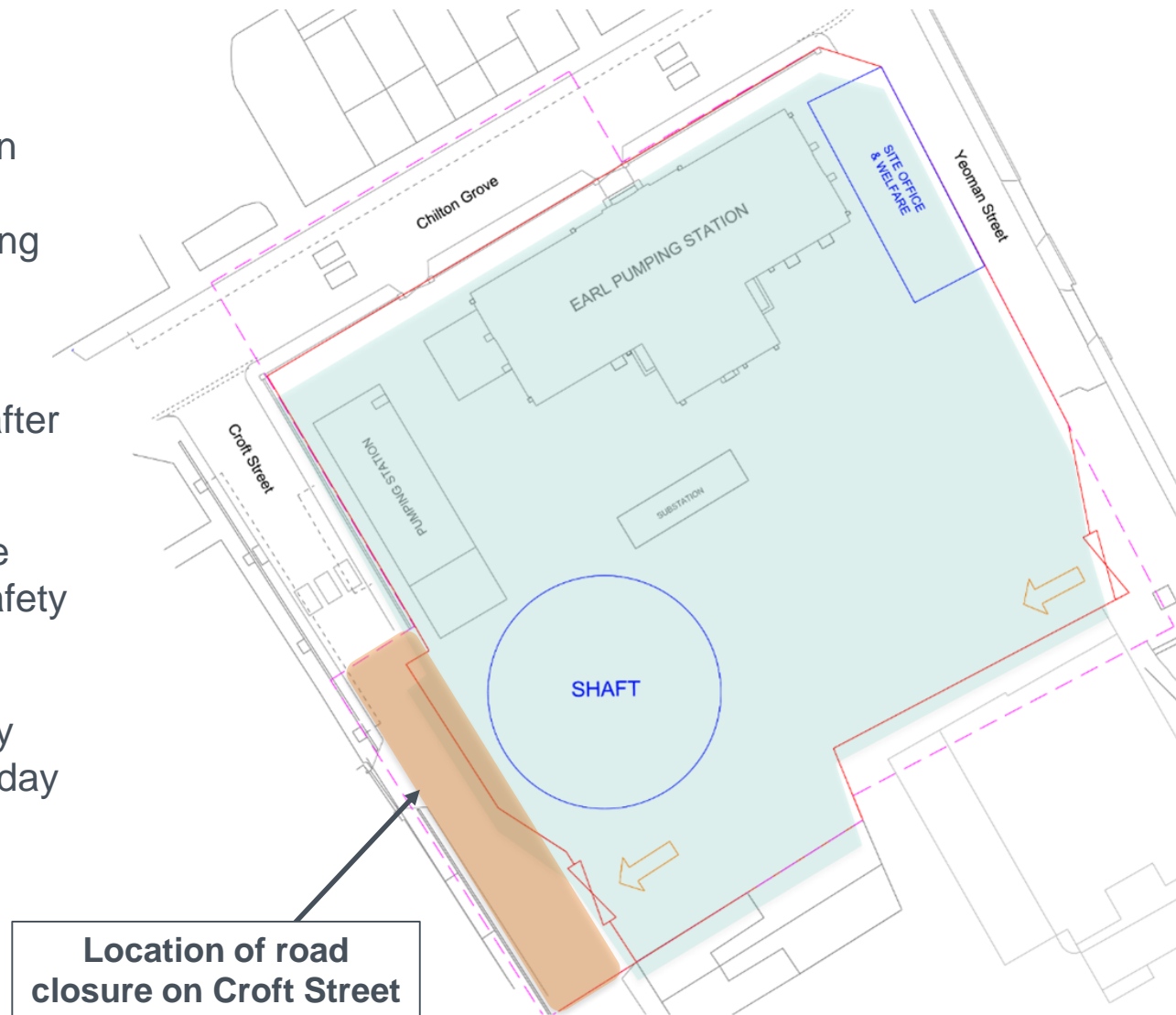
 (08:00 - 18:00) Monday to Friday, (08:00 - 13:00) Saturdays
 (08:00 - 22:00) Monday to Friday, (08:00 - 13:00) Saturdays

Working Hours	Standard	Extended
Monday – Friday	08:00 – 18:00	Until 22:00
Saturday	08:00 – 13:00	Until 17:00

1 hour allowed before & after for mobilisation

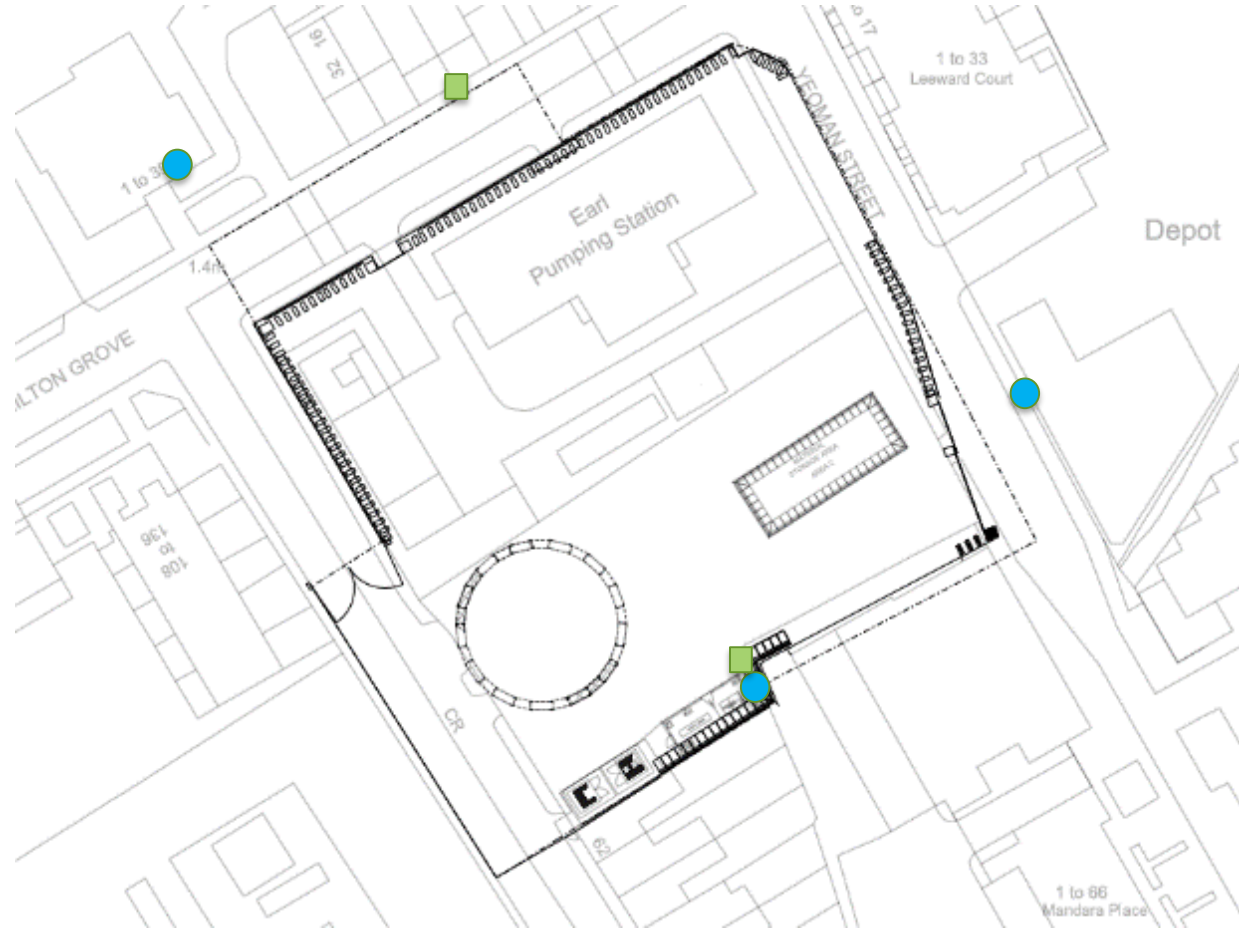
Extension of Croft Street road closure

- Up to September 2020
- The enclosure was initially in place to allow us to permanently divert an existing sewer
- Design issues were faced which moved the works to after shaft construction
- The congested nature of the site can prove difficult for safety reasons
- The extra space provided by the road closure helps with day to day site activities



ENVIRONMENT

Noise and Air Quality



- Noise Monitor
- Air Quality Monitor

Month	Noise	Air Quality
	S61 Exceedances	24h PM ₁₀ Exceedance
February 19	0	1
March 19	0	0
April 19	0	0
May 19	0	0

February dust exceedances consistent with hot, dry weather over the period as well as high ambient particulate matter (PM₁₀) levels throughout the local area. Damping down was undertaken regularly across the site for this period

LEGACY

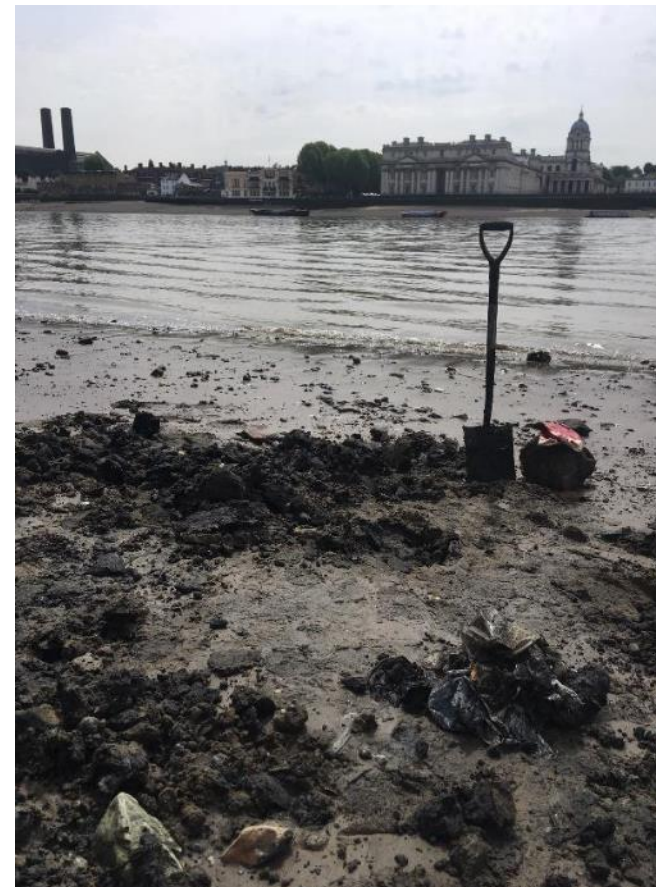
8 rounds of plogging!

The team have been out 8 times and have noticed a dramatic difference along their usual routes



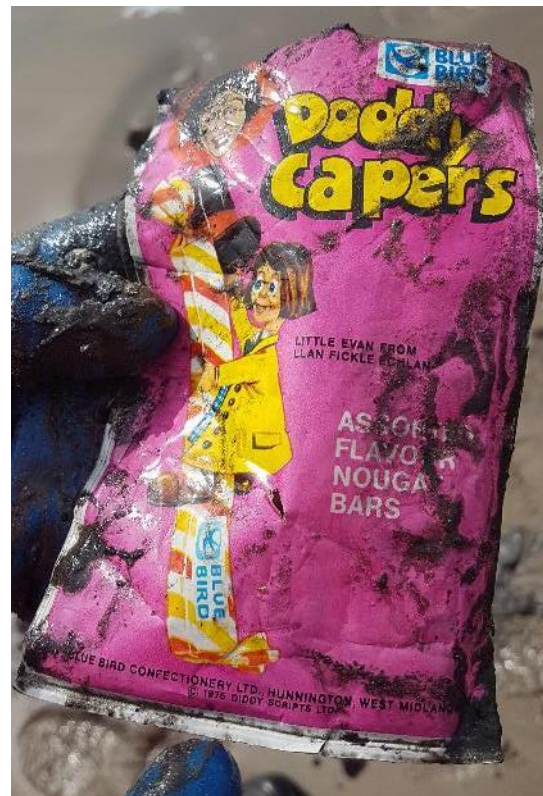
Foreshore clean-up

On Wednesday 22 May, a team of staff volunteers cleaned an area of foreshore along the Isle of Dogs. Using shovels, gardening forks and elbow grease, they managed to remove around 50 bags of rubbish.



Foreshore clean-up

Exciting findings include a 44-year old nougat wrapper and a Terry's Chocolate Orange - priced at 26p!



THANK YOU

**Any questions
please contact the Tideway Helpdesk on:**

Telephone: 08000 30 80 80

Email: Helpdesk@Tideway.London