



Tideway



**MORGAN
SINDALL**

Balfour Beatty

TTT Working Group Barn Elms & Putney Embankment Foreshore

Thursday 18th July 2019

Tideway Project Update

Latest Time-Lapse Video

You can watch the June time-lapse video by clicking on the link below.

<https://www.youtube.com/watch?v=vMyTdgrQjt8&t=3s>

Putney Embankment Foreshore



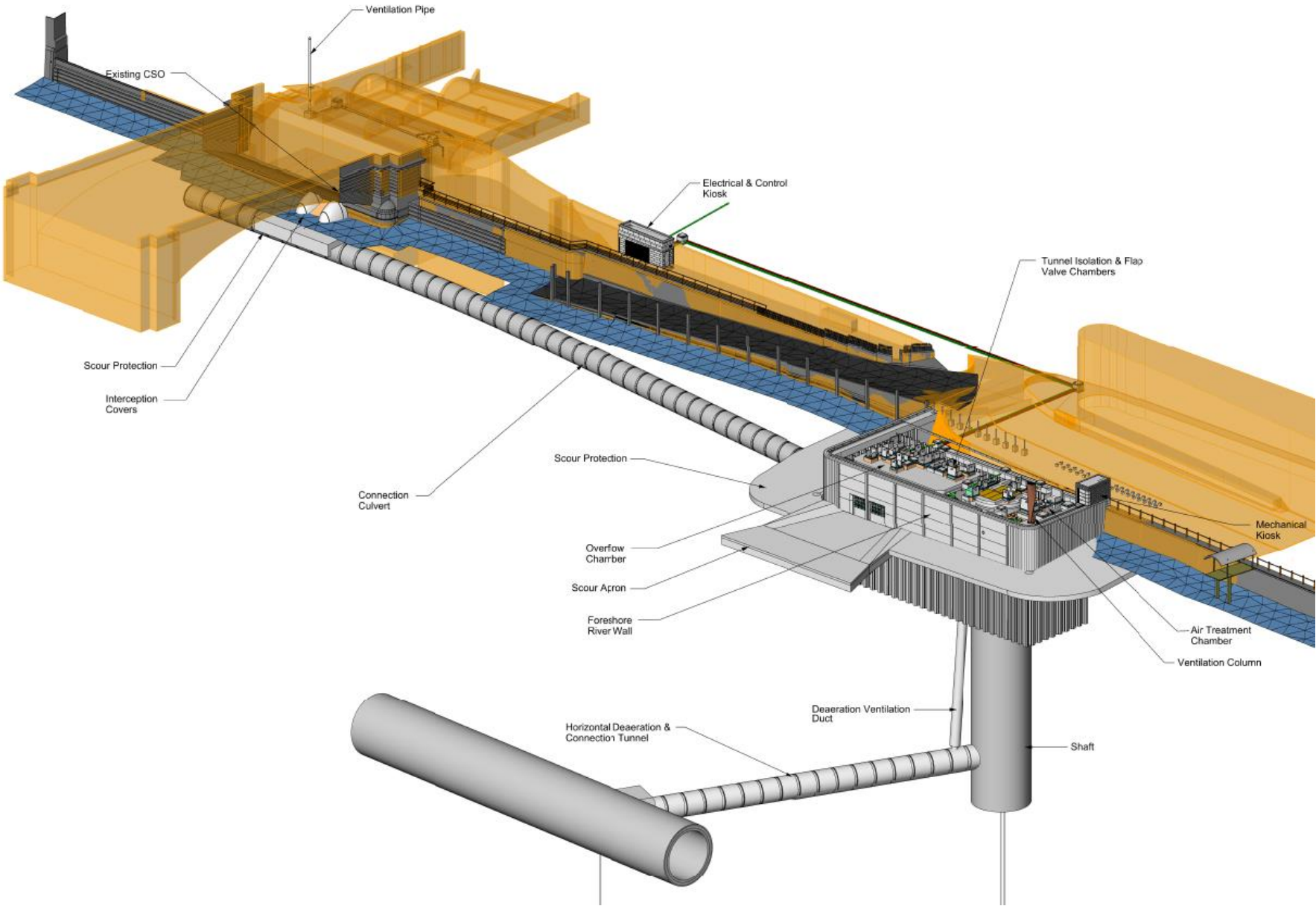
David Miles

Tideway Project Manager – Putney Embankment Foreshore

The Putney Scheme overview



The Putney Scheme overview

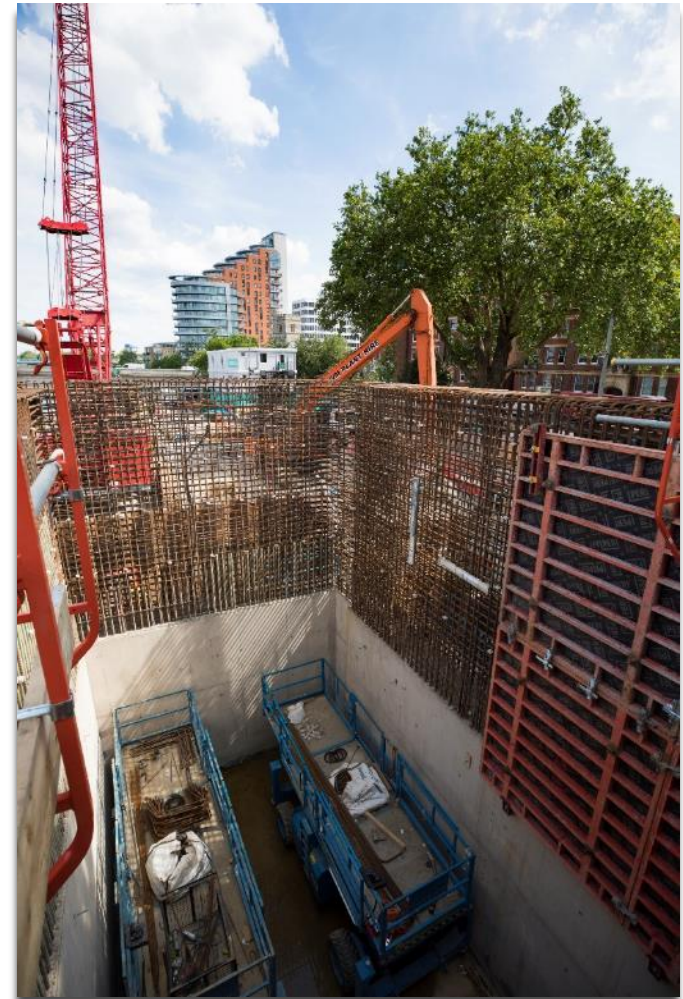


What we've been up to...

Completion of the Valve Chamber



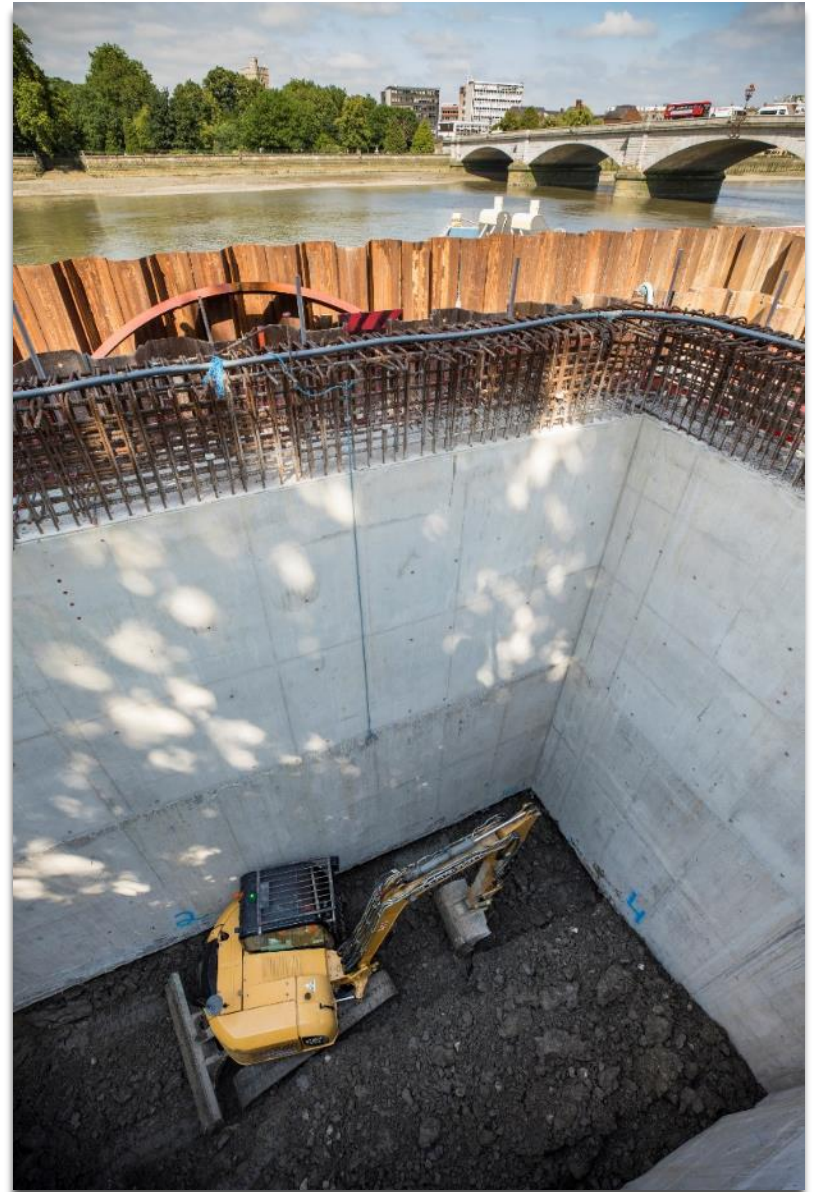
February – May 2019



What we've been up to...

Completed sinking the Penstock

May – June 2019



What we've been up to...

February



March



June

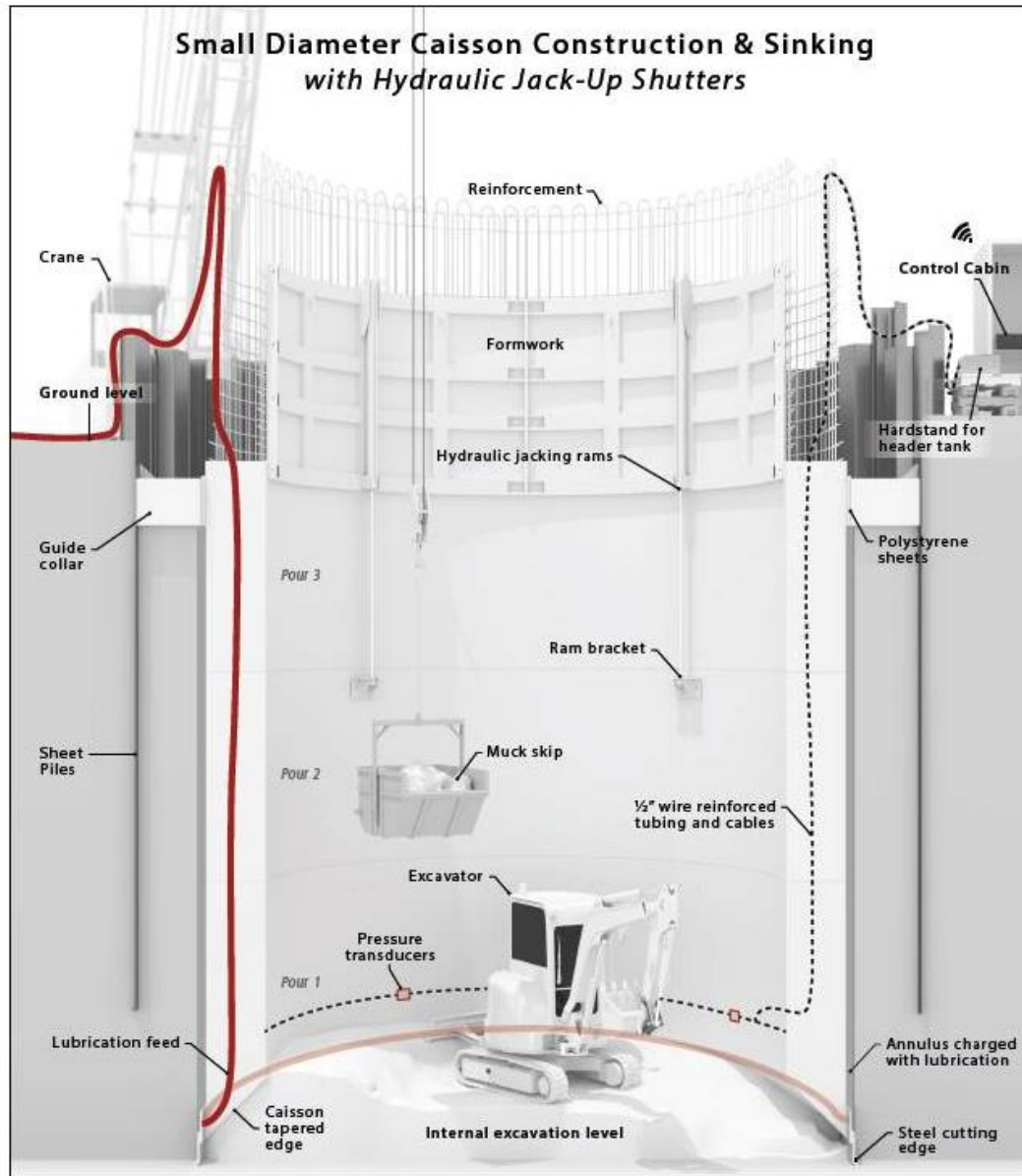


What we've been up to...

Installed TBM reception cofferdam - March 2019



What we've been up to...

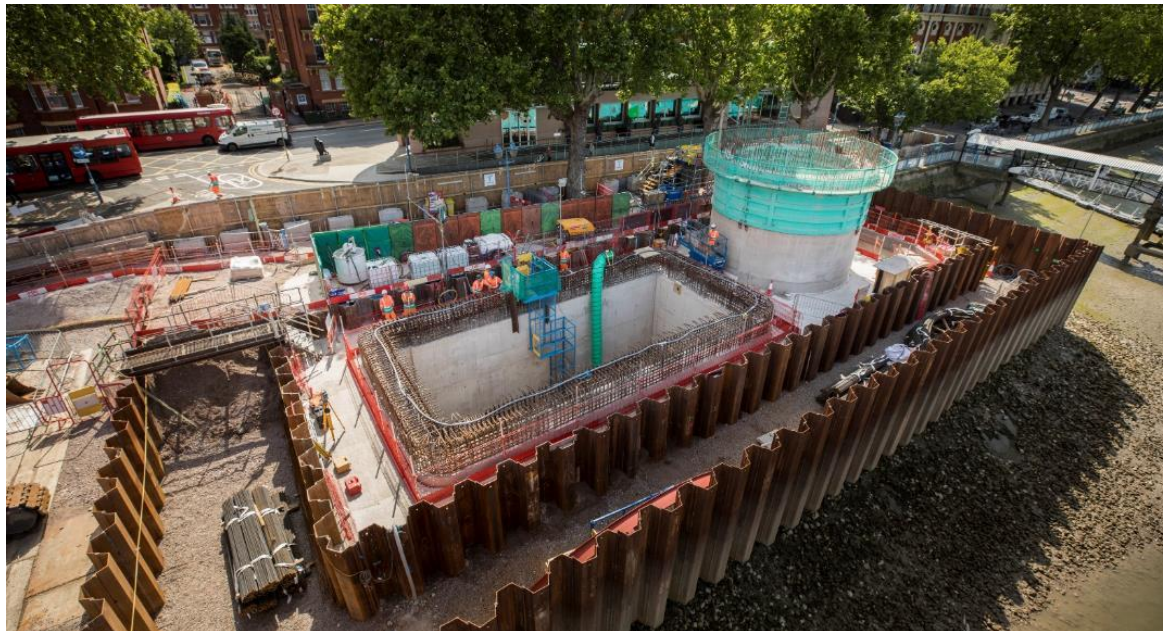


Current progress

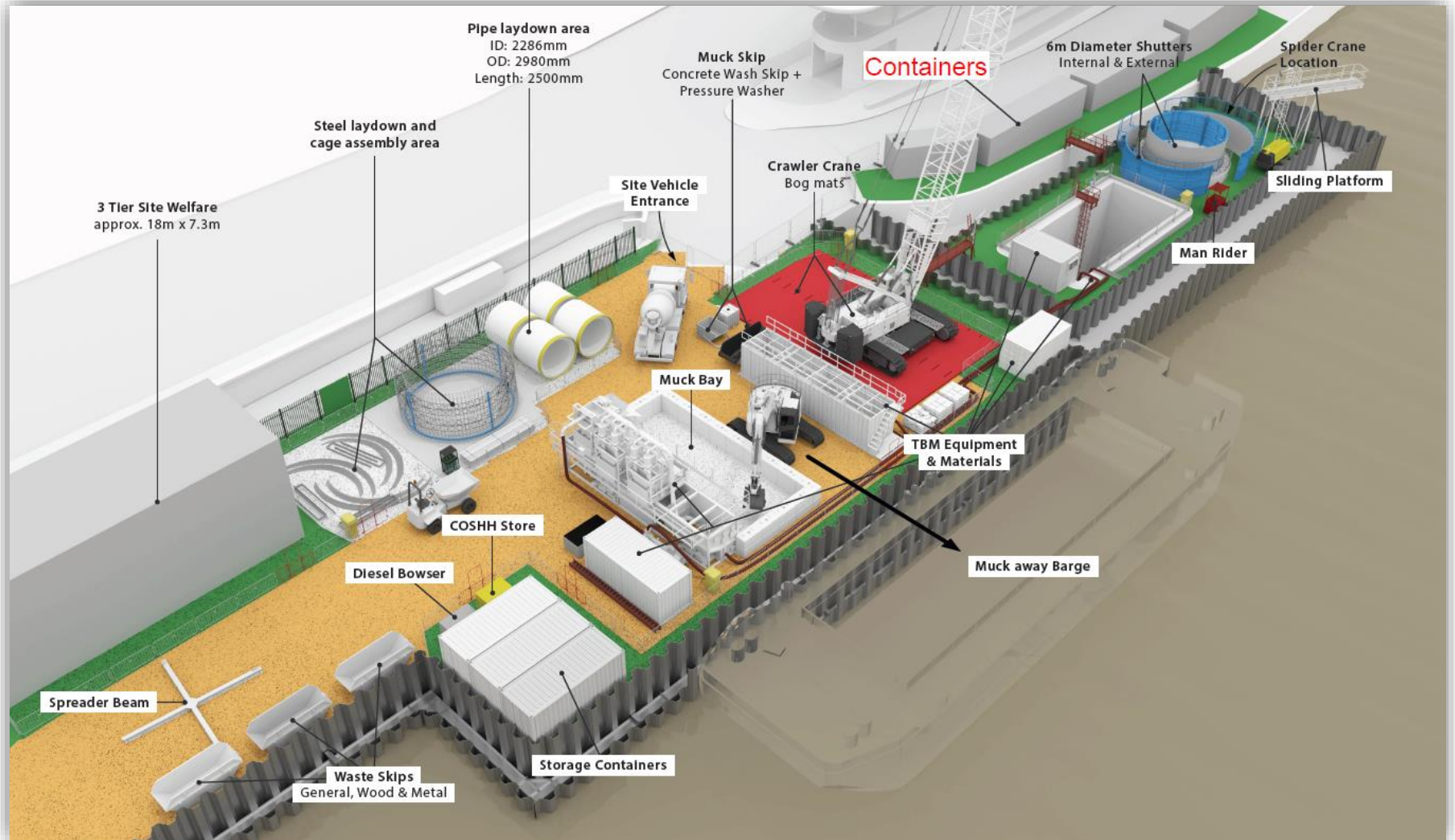


And looking forward...

- Excavating and sinking Drop Shaft - Early July
- Begin Tunnelling - Late Summer
- Begin Church Vault Works – Early Autumn
- Shaft and Tunnel works all currently planned to be day shift working only



And looking forward...our site setup

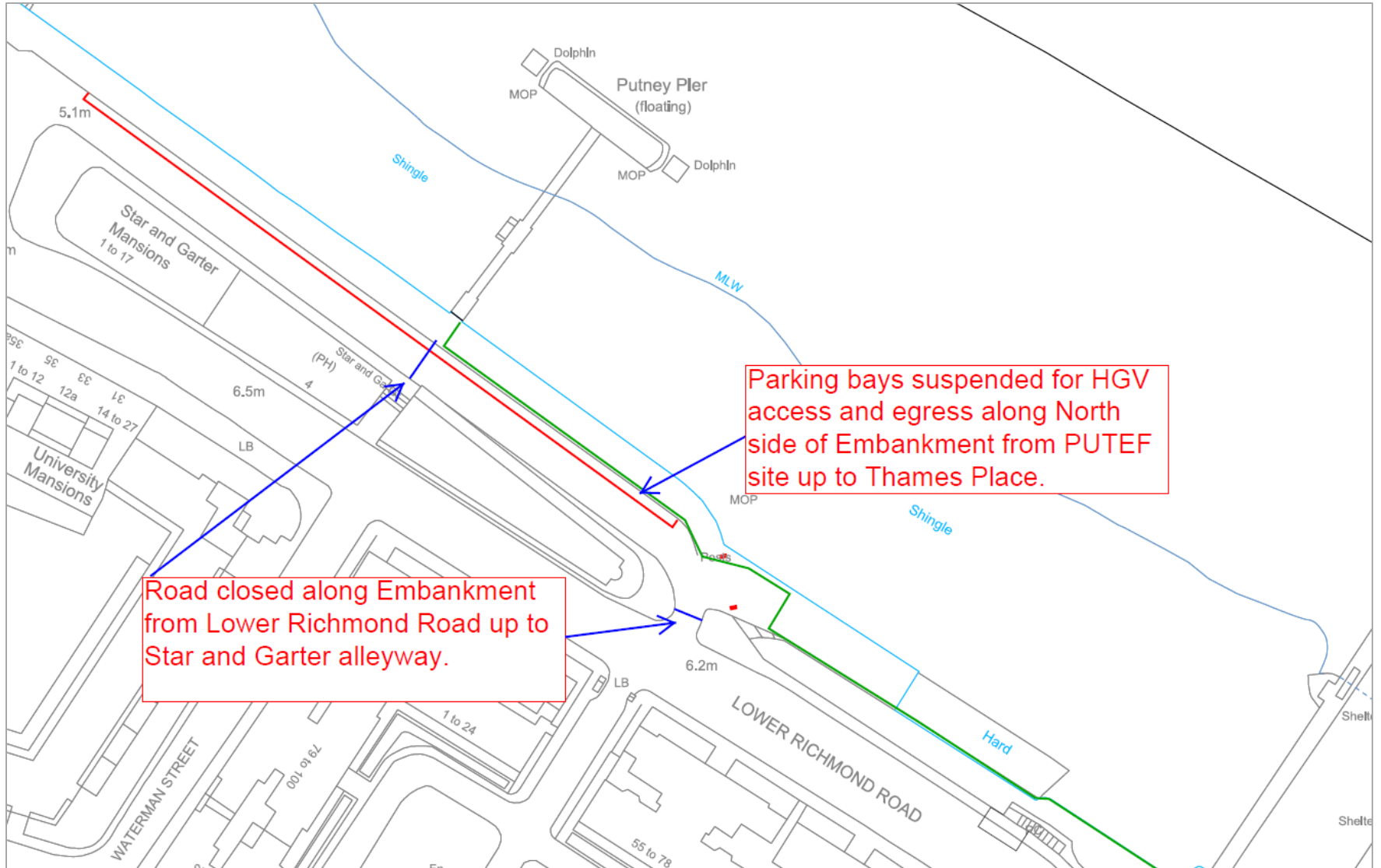


Putney's legacy promontory



And looking forward...

Occasional road closures



Putney Embankment Foreshore

More by river

- Change to overall works method, using larger barges, has resulted in fewer barge movements on the river
- Each barge movement equates to approximately 40 HGV's removed from the local road network
- Since October we have had 14 barges arrive at Putney Embankment Foreshore, keeping approximately 560 lorries off the road



University Boat Race



Putney Embankment Foreshore

Questions?



Barn Elms

An aerial photograph of a tree nursery or plantation site. The foreground is a large, flat, light-colored area, possibly a parking lot or a cleared field. In the middle ground, there are several rows of young, green trees planted in a grid pattern. A large, dark, cylindrical tree stump is visible in the center-left area. The background shows a white fence or wall, and more trees beyond it.

Bhavini Vyas

Project Manager | Barn Elms

Barn Elms Overview



Barn Elms

Sport Centre Changing Rooms and Gym - Overview



Original



Architectural Design



New Changing Rooms

Barn Elms

Sport Centre Changing Rooms and Gym



12 months later



6 months later



Barn Elms

New Changing Rooms and Gym – Handed over April 2019



Barn Elms

New Changing Rooms and Gym



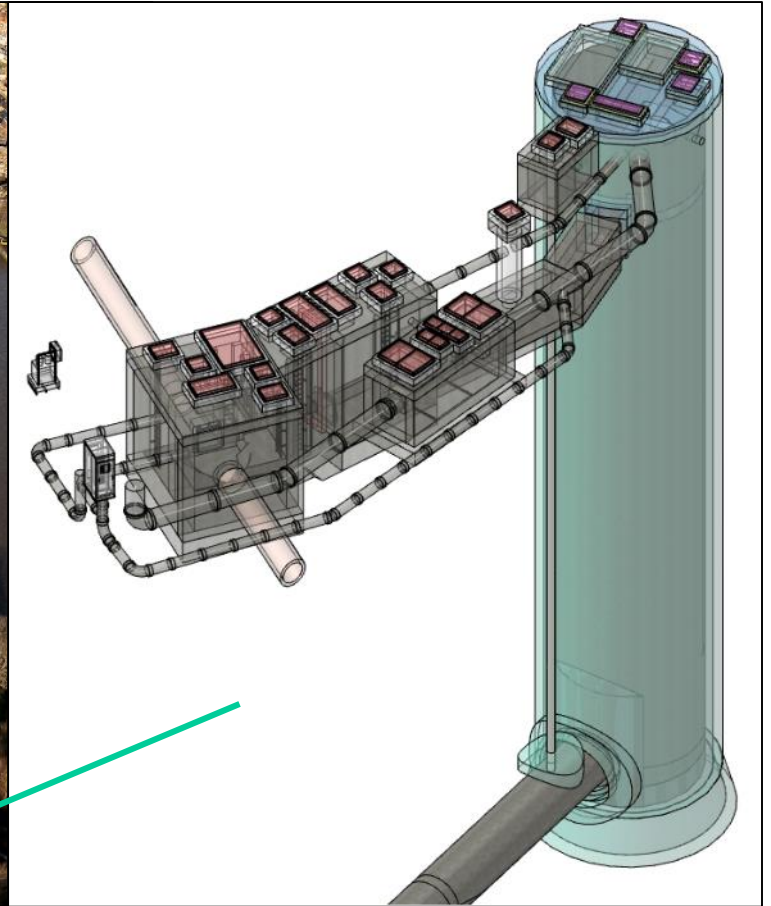
Barn Elms

Old changing rooms – Soft strip, demolition and reinstatement of road



Barn Elms

CSO Worksite - Overview



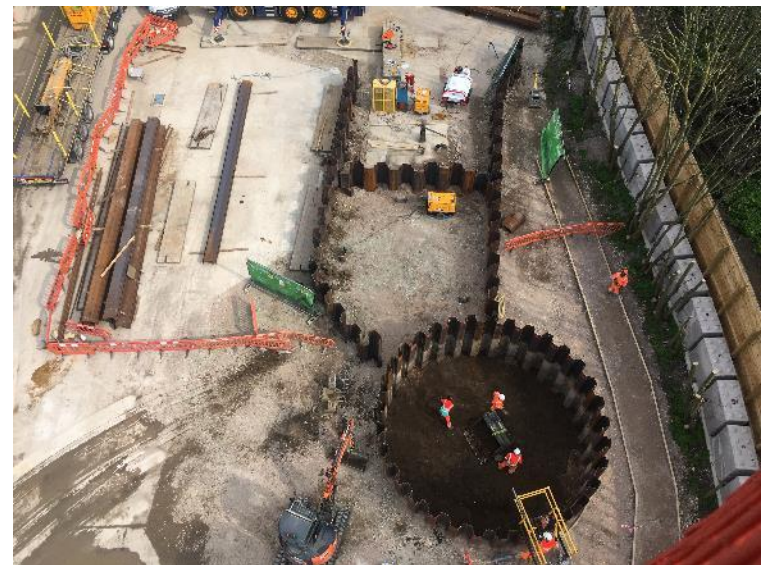
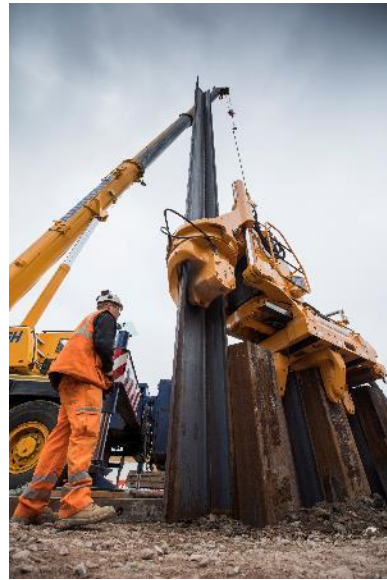
Barn Elms

CSO Worksite – Site set up



Barn Elms

CSO Worksite – Sheet Piling of Shaft and Cofferdam



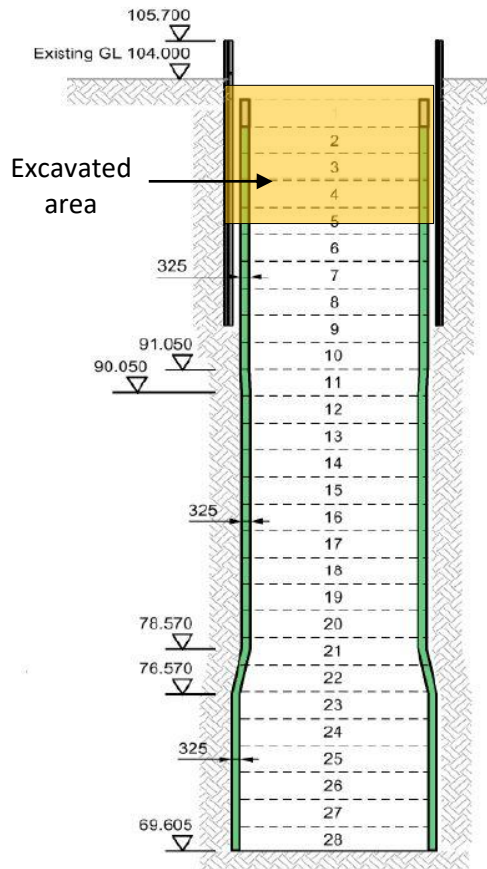
Barn Elms

CSO Worksite – Archaeology

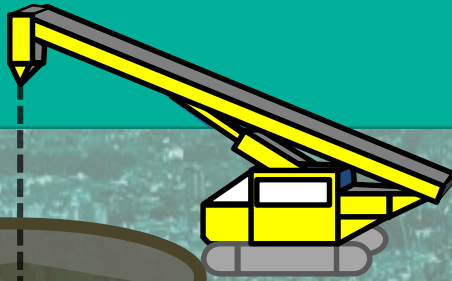


Barn Elms

CSO Worksite – Shaft SCL



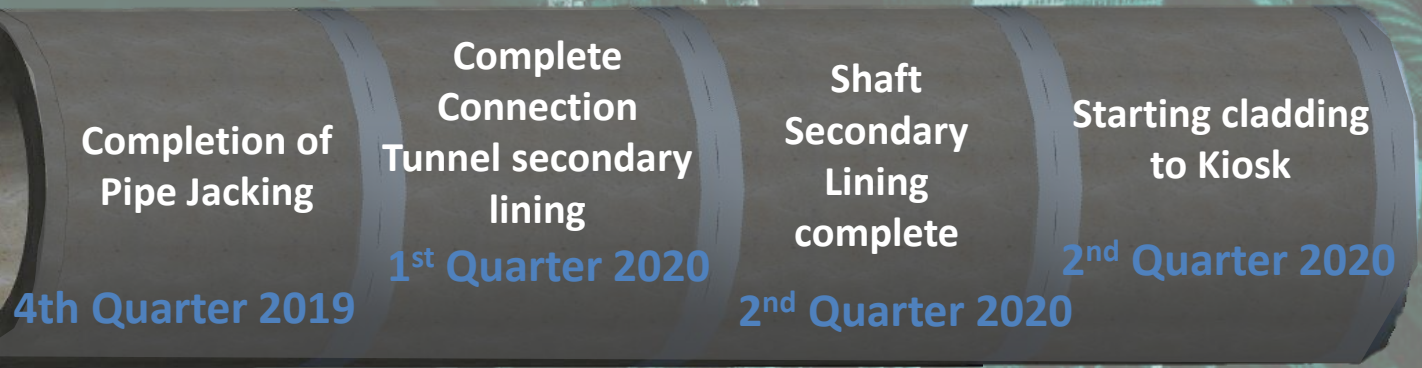
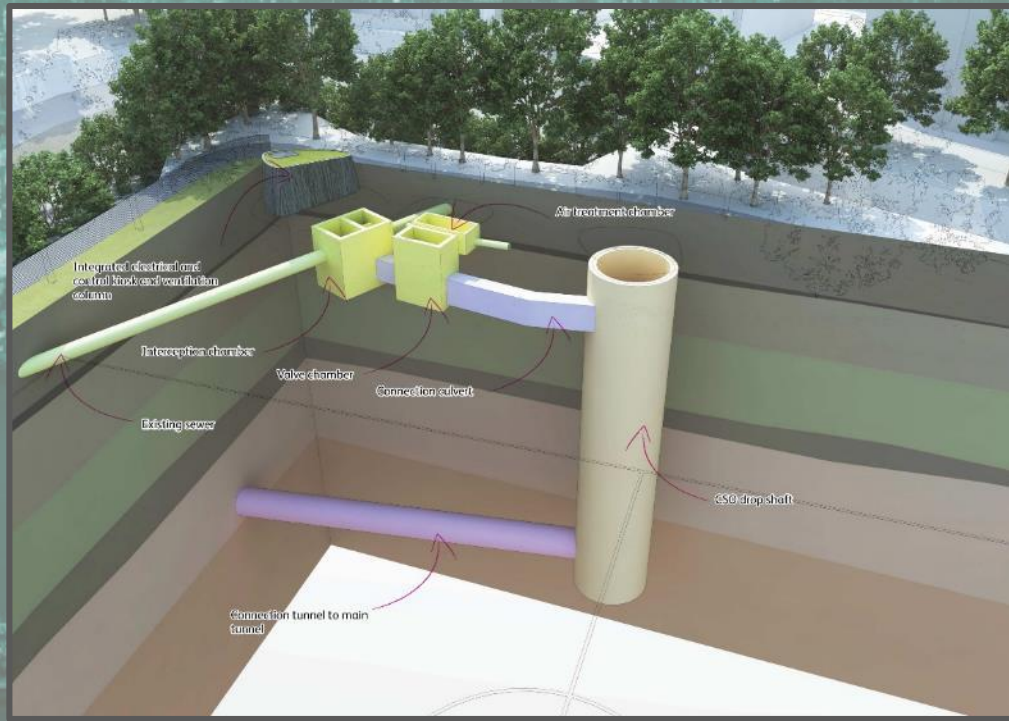
KEY MILESTONES



Commence CSO
Fluming
3rd Quarter 19

Complete Shaft
3rd Quarter 19

Start Pipe Jacking
4th Quarter 19



An aerial photograph of the Barn Elms cricket ground in London. The ground is a large, green, oval-shaped field with several cricket pitches marked on it. It is surrounded by lush green trees and a dense urban area in the background. A river, the River Thames, flows along the left side of the ground. In the foreground, there are several buildings, including a large white structure with a red roof and a parking lot. The text "Barn Elms" is overlaid in the top left corner, and "Questions?" is overlaid in the center of the field. In the bottom left corner, the name "Bhavini Vyas" and the title "Project Manager | Barn Elms" are overlaid.

Barn Elms

Questions?

Bhavini Vyas
Project Manager | Barn Elms



Tideway



**MORGAN
SINDALL**
CONSTRUCTION
INFRASTRUCTURE

Balfour Beatty

The Archaeology at Barn Elms (BAREL)
Mike Curnow, Senior Archaeologist, MoLA
July 2019

Why Are We Here?

(legally speaking)

- Thames Tideway Tunnel Development Consent Order (Schedule 3)
- Planning Act (2008)
- Town and Country Planning Act (1990) & Planning and Policy Guidance Note 16 (PPG16)

Why Are We Here?

(archaeologically speaking)

- Wandsworth Historical Society excavations (1974)
- MoLA Archaeological Evaluation trenches (2015-16)
- Finds from the Thames

Why Are We Here?

(archaeologically speaking)

Aims and Objectives

- Do any features related to the Barn Elms manor house survive on site?
- Is there any evidence of medieval activity?
- Is there any further evidence of Iron Age settlement?

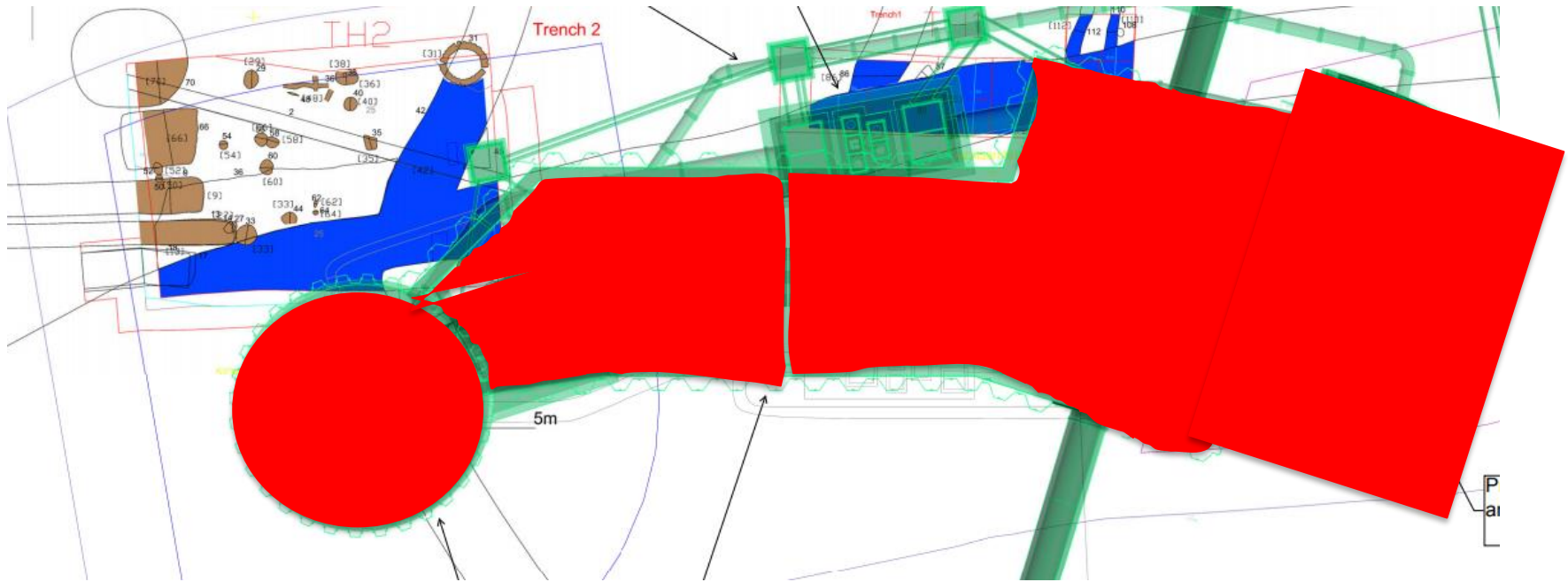


Research Framework for London Archaeology & Tideway Heritage Themes

The Site



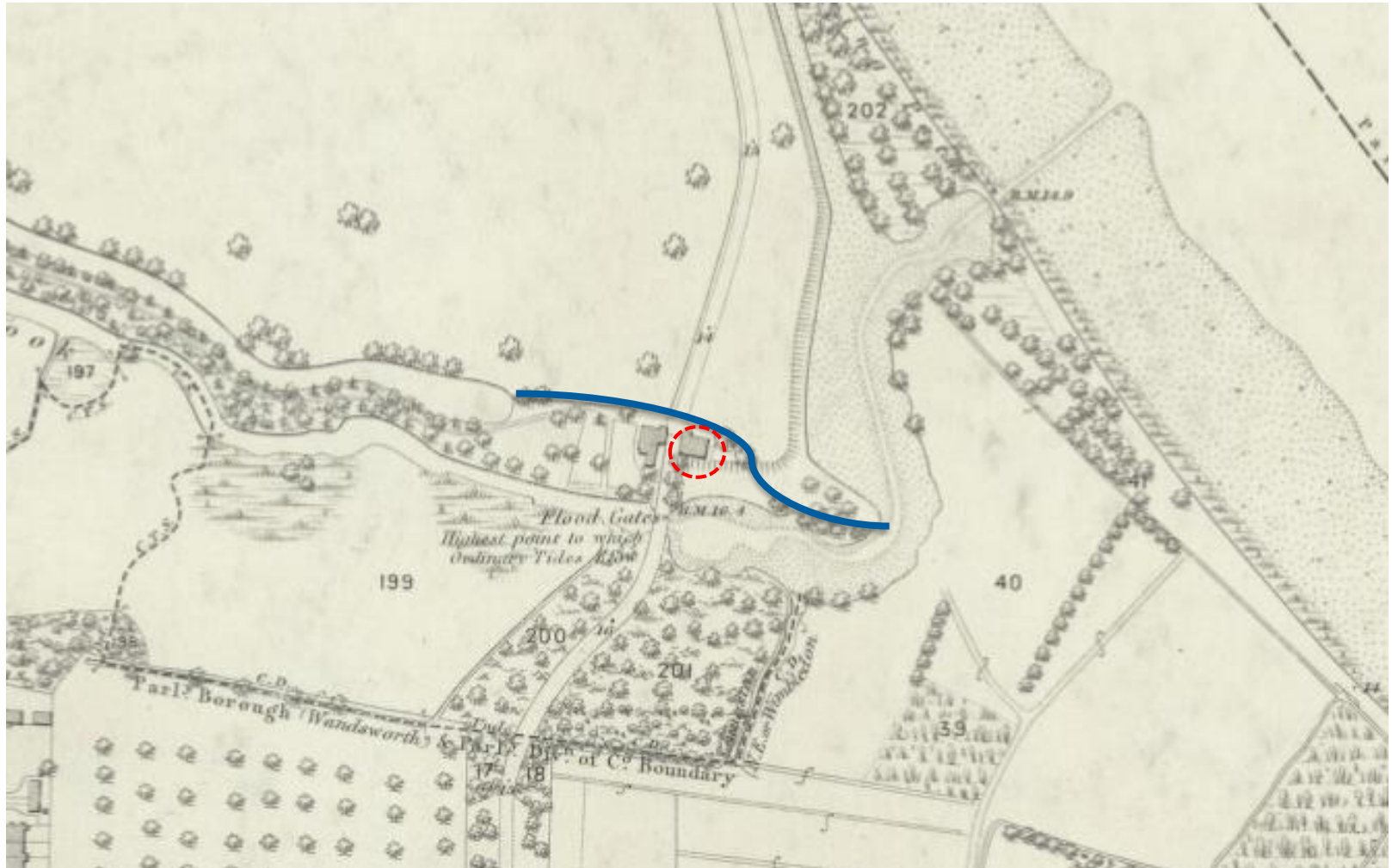
Areas of Excavation



Post-Medieval Remains



Post-Medieval Remains



Medieval Remains



Roman Remains



Prehistoric Features



Prehistoric Features



Prehistoric Features



Prehistoric Artefacts I



Prehistoric Artefacts II



Prehistoric Artefacts III



The Story So Far



- Boundary ditches
 - Settlement
- Multiple phases
- High status artefacts
- Trade with Rome (?)

Iron Age Roundhouses



Recreation of an Iron Age farm (Butser, West Sussex)

References

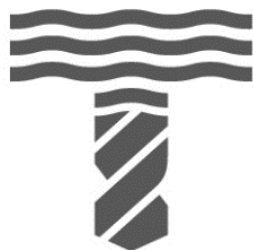
www.britishmuseum.org.uk

maps.nls.uk

historicengland.org.uk/whats-new/features/conservation-listing-timeline

Museum of London (2002) *A Research Framework for London Archaeology 2002*

Helpdesk



Tideway

Call: 08000 30 80 80

Email: helpdesk@tideway.london

Write to: Freepost TIDEWAY



Balfour Beatty

Helpdesk have received 2 complaints linked to our schemes at Putney Embankment Foreshore and Barn Elms

1 x Local Air Quality in Putney

1 x High pitched sound at Barn Elms

HOW TO MAKE A CLAIM IF YOU ARE AFFECTED BY TIDEWAY'S WORK

Who do I go to for advice?

- Independent Advisory Service (IAS) Helpline for independent advice: **0800 917 8845** or info@tidewayias.co.uk
- Tideway's Mitigation and Compensation Lead, **Louise Walsh**, for personal assistance and advice: via Tideway Helpdesk **08000 30 80 80** or helpdesk@tideway.london or direct **07971 077165** or louise.walsh@tideway.london

How do I submit my claim?

- Louise can submit your claim to the Independent Compensation Panel (ICP) on your behalf, or
- You can submit your claim direct to the ICP: admin@tidewayicp.london
- The IAS can send you a claim form, or you can download a claim form from the Tideway website: www.tideway.london/help-advice/compensation-information/Independent-Compensation-Panel

Community Engagement

Patrick Kelly

Litter Pick April



Oarsome Challenge



BMB Tideway Community Investment



BMB Tideway Community Investment



BMB Tideway Legacy



BMB Tideway West Legacy

- Volunteered 3000+ hours last year for local causes
- STEM volunteering – 1600+ hours at schools including Southfields Academy and Ark Putney Academy in Wandsworth
- 27 successful work placements over the summer
- 23 apprentices working across the seven sites
- Almost 1 in 50 employees is an ex-offender
- BMB collaborate with Women In Construction to push a more gender diverse workforce
- Almost 20% of employees live on local boroughs



Questions