



**Community Working Liaison Group**

**Putney Embankment Foreshore & Barn Elms**

**Thursday 24 October 2019**



**Tideway**



**MORGAN  
SINDALL**

**Balfour Beatty**

**Welcome**

# Putney Embankment Foreshore



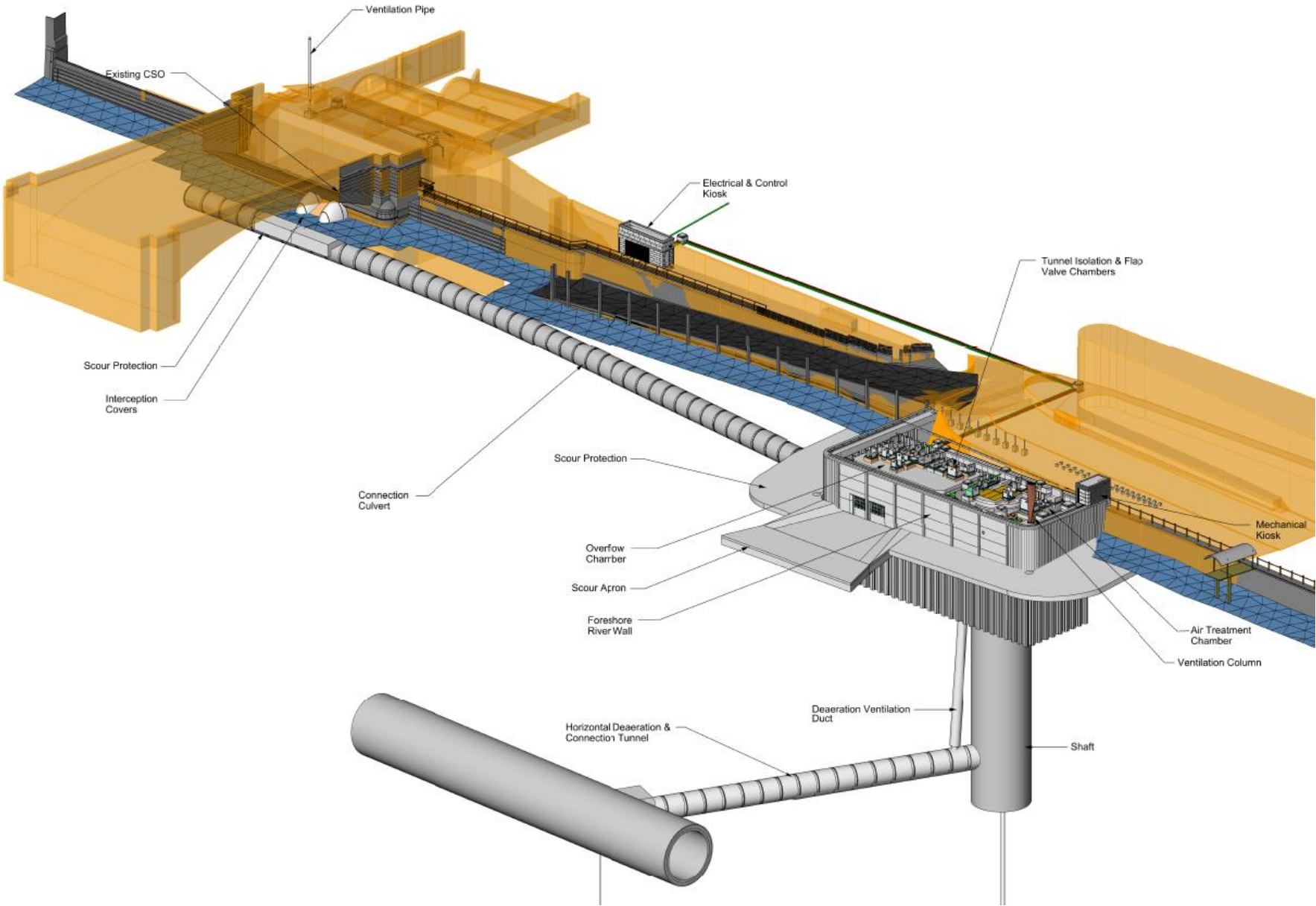
**Tom Brown**

**Site Agent – Putney Embankment Foreshore**

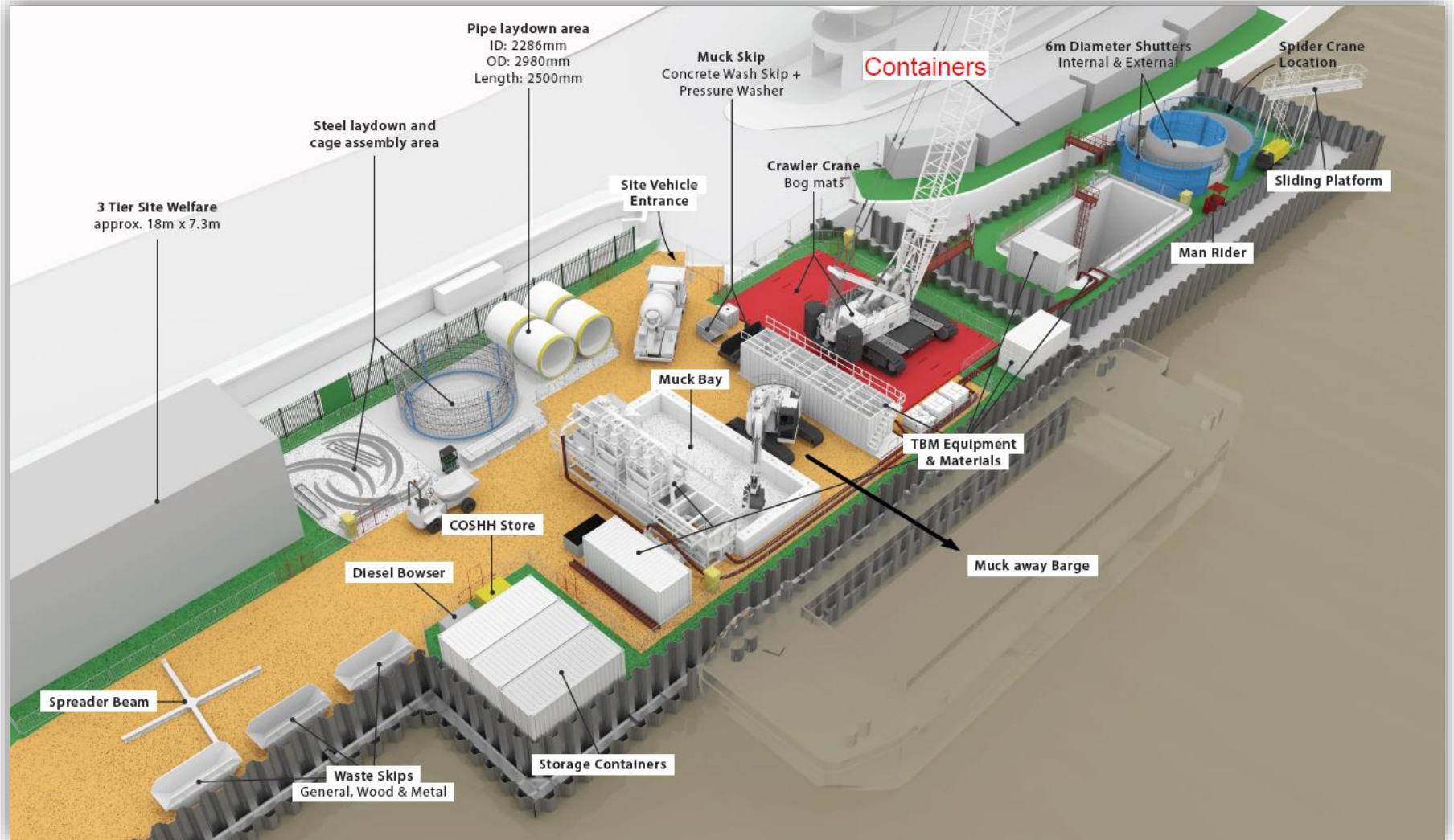
## The Putney Scheme overview



# The Putney Scheme overview



# Our site setup

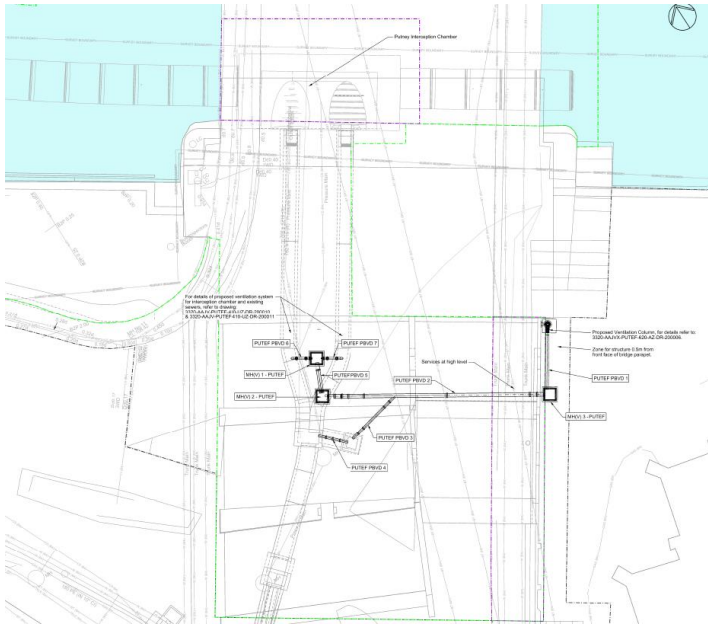


# Current progress



Our recent milestones:

- Valve chamber complete
- Dropshaft excavation complete next week
- Baseplug pour in the shaft - next week
- Bridge vaults works commenced



# What we've been up to...





# Current progress



# Current progress



# What we've been up to...



# Key tunnel equipment deliveries this week

## INFORMATION SHEET

REF: 2140-TDWAY-TTTUN-990-ZZ-ZZ-750434  
October 2019



Tideway



### PUTNEY EMBANKMENT FORESHORE

Work at our Putney Embankment Foreshore site is progressing well, and we are now preparing to start tunnelling on site in the foreshore.

During week commencing Monday 21 October, we will be receiving early morning deliveries. One delivery includes the Pipe-Jacking Machine, which will be creating the tunnel to intercept the combined sewer overflow (CSO). The other delivery is a 1,000-tonne crane, which will be used to lower the Pipe-Jacking Machine into position.

Due to their size they are classified as abnormal loads. They will arrive between 5am and 7am on 23, 24 and 25 October. The delivery times help to reduce congestion on local roads and are in accordance with the requirements of the Metropolitan Police regarding abnormal loads.

In agreement with the London Borough of Wandsworth, and to accommodate these deliveries, road closures will be in place along Embankment road during these dates. These closures will be used to store the vehicles when they arrive before they are moved onto site from 7am each morning. On each day we will re-open the road for public use when the moves have been completed.

These vehicle movements will only take a few minutes, but please expect activity at the site from 7am. These works will be carefully managed to minimise any disturbance prior to 8am.

Once the crane has lifted the Pipe-Jacking Machine into position it will leave our site between 7pm and 11pm on Friday 25 October, or 5am the following morning.

Parking bay suspensions on Embankment road will also be in place during this week (shown on signage locally) between Thames Place and the entrance to Lower Richmond Road.

*If you feel affected by Tideway's work, you can contact Tideway's Helpdesk and ask to speak to your local Mitigation and Compensation Lead, who will then be able to support and advise you on the Independent Compensation Panel (ICP).*

### KEY INFO

#### Duration of work

- 21-26 October: Out of hours arrival and departure of large vehicles and equipment

#### What to expect

- Opening of site entrance outside normal working hours to allow for the arrival and departure of plant.

#### What will we do?

- Considerately manage movement aligned to the requirements of the Metropolitan Police
- Minimise noisy activities prior to 8am where possible, brief our workforce and plan our works to minimise noise
- Contact you if our plans change

Delivery of 'abnormal' sized loads required to be delivered from the 23<sup>rd</sup> to the 25<sup>th</sup> Oct

In co-operation with the Met Police these larger loads must be delivered outside of peak Traffic periods (7am to 7pm)

Please expect site activities in evenings and Early mornings (after 5am) during these days. We will endeavour to keep noise to a minimum prior to 8am

24 HOUR HELPDESK 08000 30 80 80  
helpdesk@tideway.london | Freepost TIDEWAY  
www.tideway.london



# Change in working hours for tunnelling

## INFORMATION SHEET

REF: 2140-TDWAY-TTTUN-990-ZZ-ZZ-750435  
October 2019



Tideway



### PUTNEY EMBANKMENT FORESHORE

Work at our Putney Embankment Foreshore site is progressing well as we prepare for our next phase of works.

Following the delivery of our Pipe-Jacking Machine, we will start our tunnelling works in the foreshore in early November, which we expect will take up to five weeks to complete.

As agreed with the London Borough of Wandsworth, during this time our on-site working hours will be extended to Monday – Friday 07:00 – 19:00 and Saturday – 08:00 -18:00.

We will continue to monitor noise levels and use best practice to minimise any disruption prior to 8am.

Phase 1 of tunnelling works, duration up to 5 weeks

Site working hours during tunnelling  
Monday to Friday – 0700 til 1900  
Saturday – 0800 til 1800

No current plans to work outside the hours above, we will inform you if this changes

*If you feel affected by Tideway's work, you can contact Tideway's Helpdesk and ask to speak to your local Mitigation and Compensation Lead, who will then be able to support and advise you on the Independent Compensation Panel (ICP).*

### KEY INFO

#### Duration of work

- Tunnelling for five weeks starting in early November

#### What to expect

- Extended working hours during this period:  
Monday – Friday 07:00 – 19:00 and Saturday – 08:00 – 18:00.

#### What will we do?

- We will monitor dust and noise levels
- Contact you if our plans change

24 HOUR HELPDESK 08000 30 80 80  
helpdesk@tideway.london | Freepost TIDEWAY  
www.tideway.london



# And looking forward...

## Short term milestones:

- Launching high level tunnel - Autumn
- CSO works below Putney Bridge - Late Autumn
- Air treatment chamber works- Early Winter
- TBM recovery – Early next year

## Long term milestones:

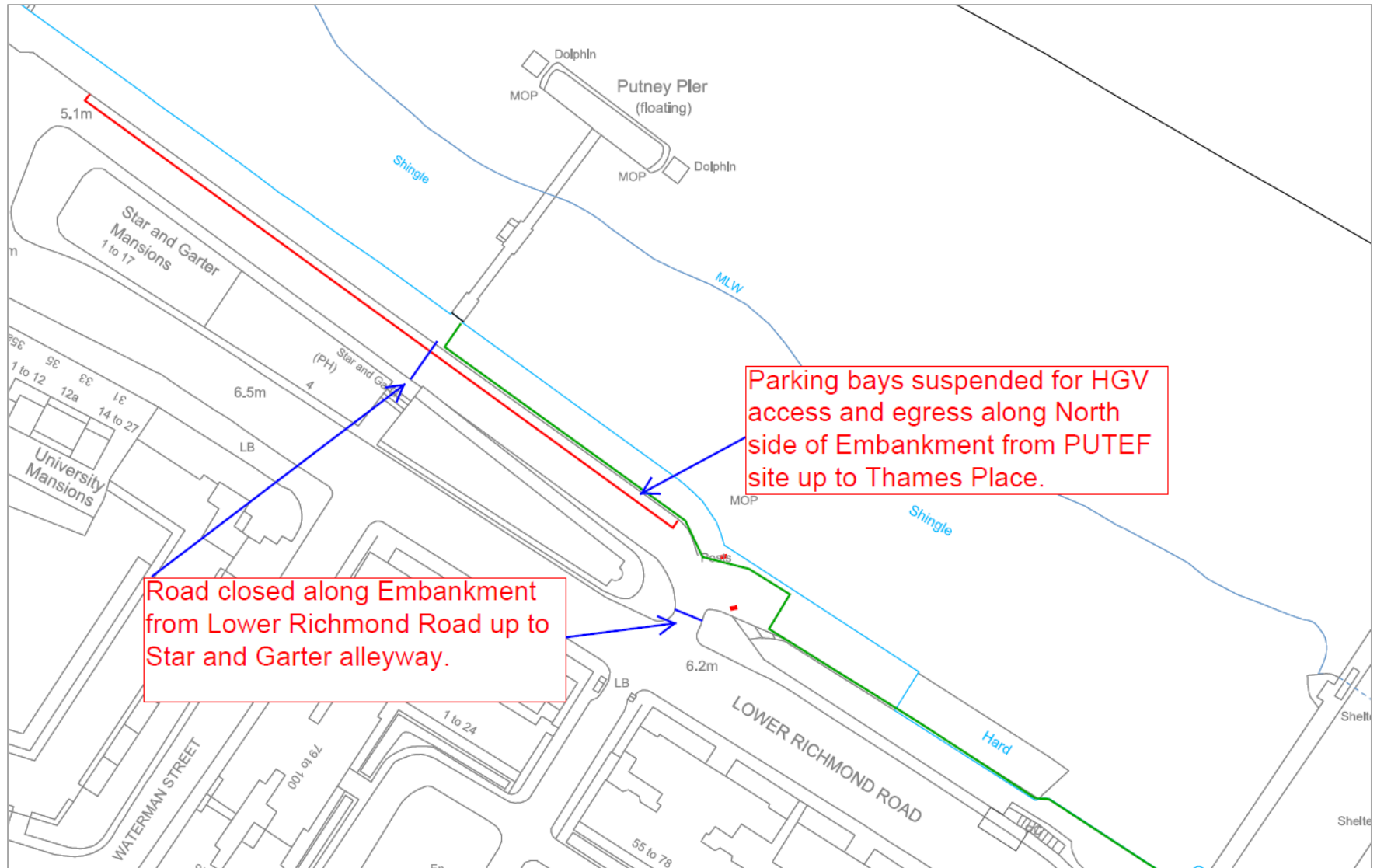
- Main site demobilisation – Spring 2021
- Temporary Slipway removal – Autumn 2022
- Testing and commission period –2022/24

# Putney's legacy promontory – application approved



# And looking forward...

## Occasional road closures





# Putney Embankment Foreshore

## More by river

- Change to overall works method, using larger barges, has resulted in fewer barge movements on the river
- Each barge movement equates to approximately 50 HGV's removed from the local road network
- Since October we have had 17 barges arrive at Putney Embankment Foreshore, keeping approximately 850 lorries off the road



Road traffic



River transport



4.2m tonnes of material moved by river



Removing 262,000 lorries from London's roads

Putney Embankment Foreshore

Questions?





**Barn Elms**

**Chris North**

**Project Manager | Putney Embankment Foreshore & Barn Elms**

# Barn Elms Overview



# Barn Elms

## Sports Centre Changing Rooms – Completion of External Works



# Barn Elms

## Sports Centre Changing Rooms – Official Opening



 **Wandsworth Council** ✓  
@wandbc

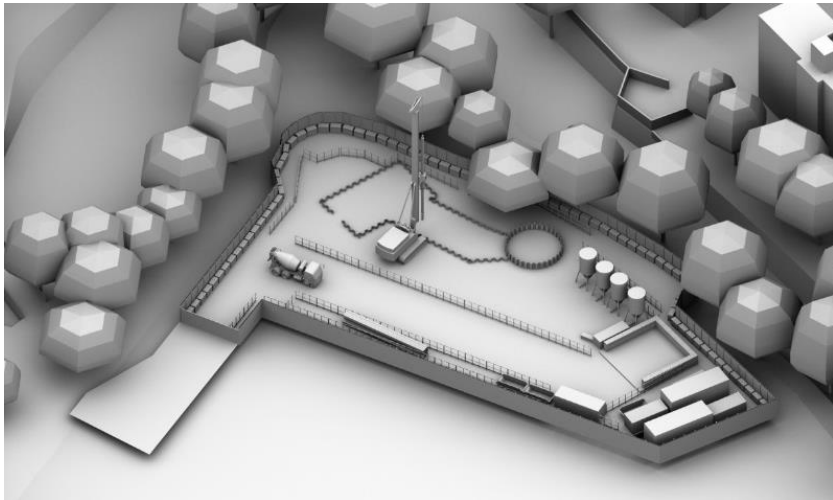
Thanks to @TidewayLondon - the company building London's new super sewer - for providing the superb new upgraded sports and fitness facilities at Barn Elms at no cost to Wandsworth's council tax payers  
[wandsworth.gov.uk/news/october-2019](https://www.wandsworth.gov.uk/news/october-2019)



2:57pm · 18 Oct 2019 · Twitter Web App

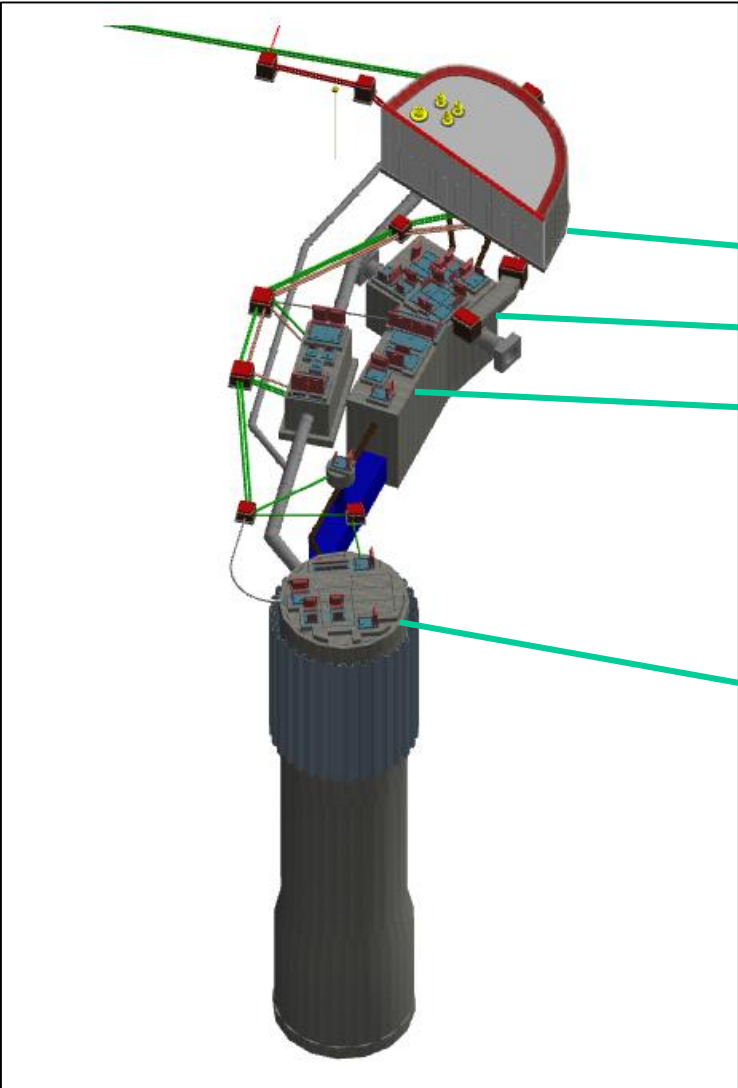
# Barn Elms

## Main worksite Overview – Design, Planning & Construction



# Barn Elms

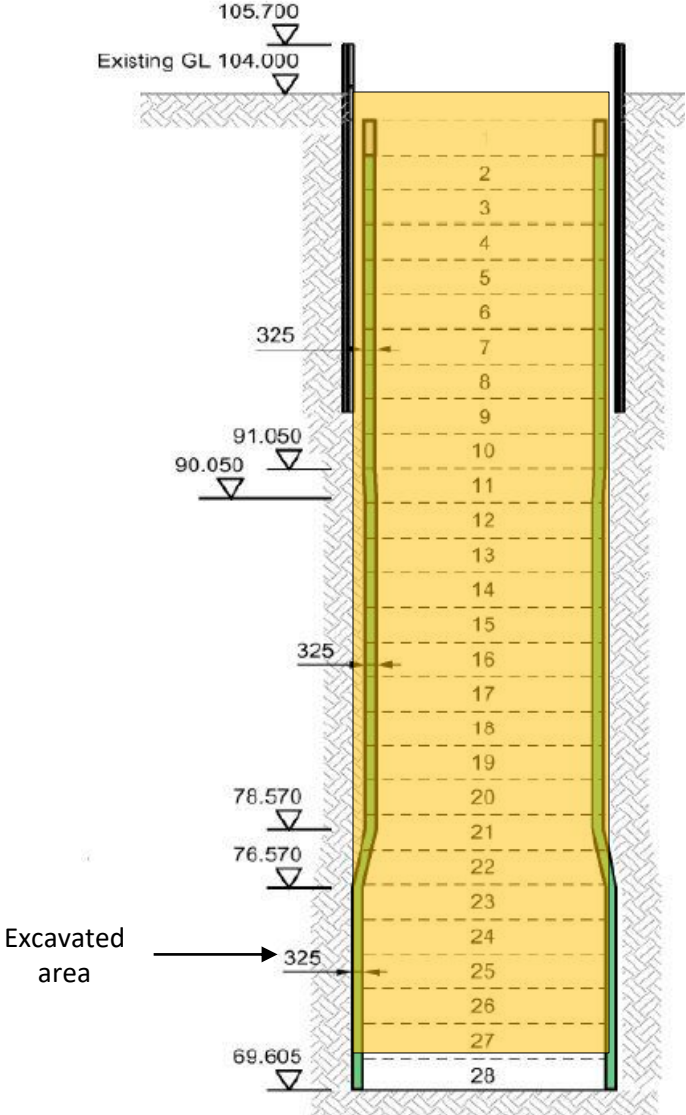
## Main worksite Overview – Design, Planning & Construction





# Barn Elms

## Shaft Sinking Progress



# Barn Elms

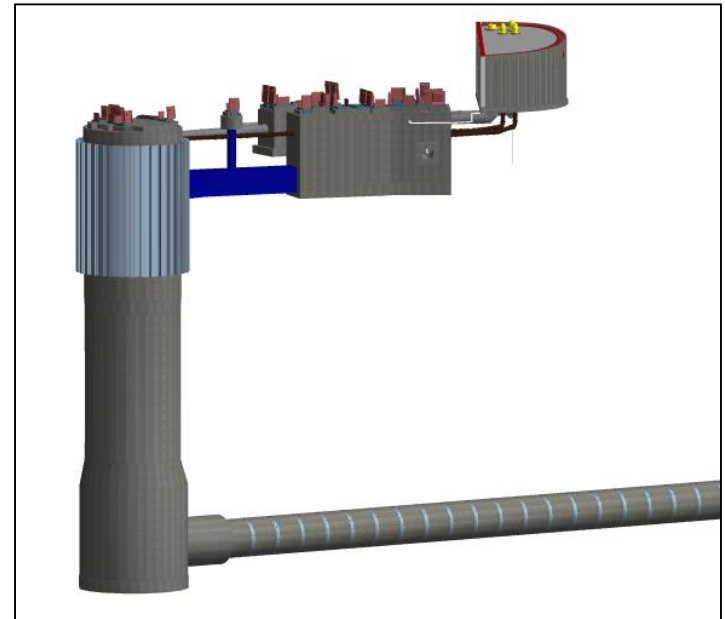
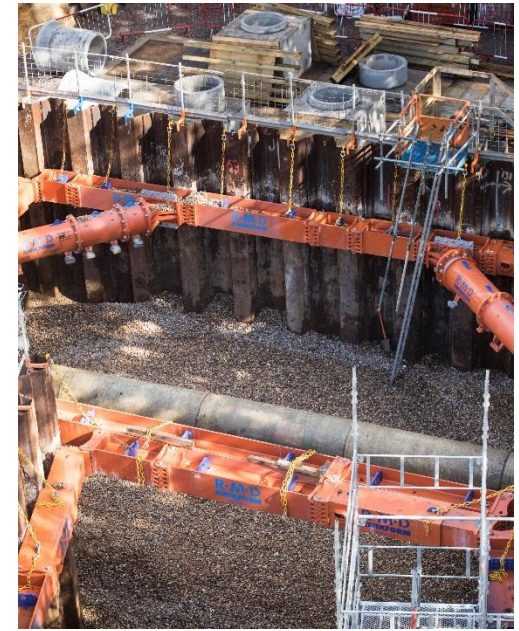
## Hydraulic Chambers Progress & CSO Fluming



# Barn Elms

## Upcoming Works

1. Chambers:
  - a) Complete CSO fluming
  - b) Excavate for hydraulic chambers
  
2. Shaft and Tunnel:
  - a) Complete SCL shaft sinking
  - b) Shaft base plug



# Barn Elms

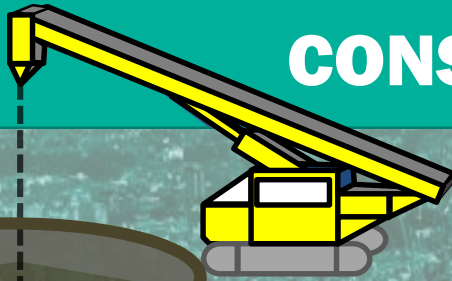
## Upcoming Works

### 2. Shaft and Tunnel:

c) 213m 'short connection tunnel' to main tunnel



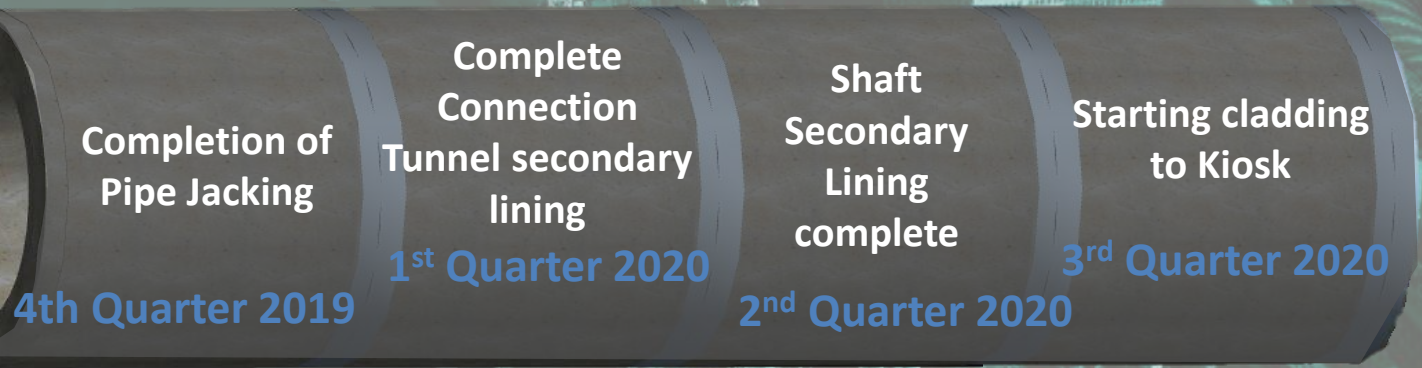
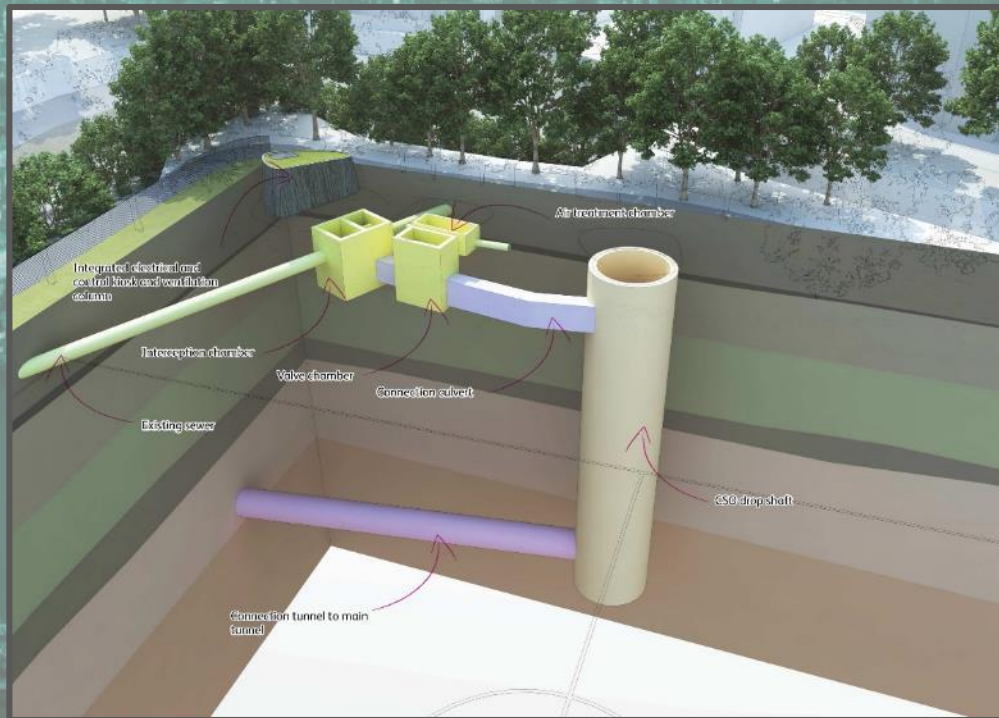
# CONSTRUCTION MILESTONES



Commence CSO  
Fluming  
4<sup>th</sup> Quarter 19

Complete Shaft  
4<sup>th</sup> Quarter 19

Start Pipe Jacking  
4<sup>th</sup> Quarter 19





Questions?

Barn Elms

Chris North

Project Manager | Putney Embankment Foreshore & Barn Elms

# Community Engagement

**Katie Ashton**

# Communication channels

## TUNNELLING UPDATE



Tideway



MORGAN SINDALL

Balfour Beatty

### Welcome to the first West Tunnelling update.

These monthly emails are to keep you up to date with where we are with tunnelling in the West.

Rachel began her journey in May and has completed the first 90m stretch to Acton. During this time, the site team have been busy installing the gantries needed to remove the London Clay which Rachel bores through.

In the next few weeks, Rachel will continue to 400m, which is



*Monthly update on the progress of the tunnelling for both our TBM's*



*Regular site visits*

## INFORMATION SHEET



Tideway

Ref: 2140-TDWAY-TTUN-990-ZZ-ZZ-747260  
August 2019



MORGAN SINDALL

Balfour Beatty

### BARN ELMS WORKING HOURS UPDATE

Work at our Barn Elms site is progressing well as we continue with the shaft construction works.

From Tuesday 27 August, as part of our shaft excavation works, we will be extending our working hours at Barn Elms for approximately 8 weeks. This is while we carry out sprayed concrete lining (SCL) works in the shaft. SCL will be used to line the shaft with concrete and this requires a very high level of quality control.

Following discussions with London Borough of Wandsworth, our working hours have been extended. The team will now be working from 7am until 7pm for the duration of these 8 weeks, with a one hour start up and shut down period on either side of these hours.

The extended working hours will only be from Monday to Friday. Saturday working hours will continue as normal.

We will continue to monitor noise and dust levels and use best practice to minimise any disruption.

*If you feel affected by Tideway's work, you can contact Tideway's Helpdesk and ask to speak to your local Mitigation and Compensation Lead, who will then be able to support and advise you on the Independent Compensation Panel (ICP).*

### KEY INFO

#### Duration of work

- Tuesday 27 August: extended working hours for 8 weeks, 7am – 7pm
- Saturdays: 8am – 1pm
- One hour start up and shut down periods either side of working hours

#### What to expect

- Works between 7am – 7pm will be mainly within the shaft

#### What we will do

- We will monitor dust and noise levels
- Use of practical means to minimise noise

24 HOUR HELPDESK 08000 30 80 80  
helpdesk@tideway.london | Freepost TIDEWAY  
www.tideway.london



*Quarterly publication delivered to 14,000 neighbours*

*Information sheets distributed to all nearby properties*



# Communication channels



Community Information Centre at our Carnwath Road site



## CONCRETE POUR: FACTS AND MITIGATION FRIDAY 7 SEPTEMBER – MONDAY 10 SEPTEMBER

### About the base plug pour:

- 3000m<sup>3</sup> volume of concrete coming onto site
- The expected rate of pour is 75m<sup>3</sup> per hour
- Approximately 400 lorries will be used
- The continuous pour will take up to 96 hours
- We will be using the concrete batching plant across the river (5 mins from site, on the south side of Wandsworth Bridge)
- A secondary concrete plant will be on standby in Wimbledon (16 mins away from site)

### How we will manage the works:

- All vehicles coming onto site will be kept behind a screened area
- There will be a radio link between the concrete supplier and the site team to ensure number of lorries on site is controlled
- All reversing lorries will take place in the shed and will be fitted with a white noise audible alarm
- Between 10pm and 8am, the acoustic shed door will only be open as far as necessary to allow lorries to leave
- Members of the BMB team will be on duty throughout the concrete pour
- Traffic marshalls will be positioned between the concrete batching plant and the site to ensure smooth traffic flow

24 HOUR HELPDESK 08000 30 80 80  
helpdesk@tideway.london | Freepost TIDEWAY  
www.tideway.london



Special event posters



Community presentations



Information events for community

# BMB Tideway Community Investment –



# What we leave behind

2019 so far ...

- Volunteering – over 3000 hours
- STEM volunteering – 1729 hours
- 149 roles for local residents
- 49 successful work placements
- 38 apprentices working across our seven sites

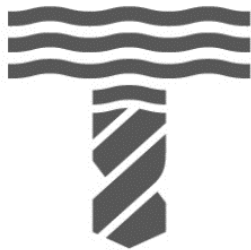


# What we leave behind

- Almost 1 in 50 employees is an ex-offender
- Environmental – cleaning up the river is the purpose of the scheme. We support Thames 21 to clean regularly clean up the foreshore
- Charity fundraising – Marylebone project clothing drive, Macmillan



# Helpdesk



**Tideway**

Call: 08000 30 80 80

Email: [helpdesk@tideway.london](mailto:helpdesk@tideway.london)

Write to: Freepost TIDEWAY



**Balfour Beatty**

Helpdesk have received 1 general project enquiry linked to our schemes at Putney Embankment Foreshore and Barn Elms

# How to make a claim if you are affected by Tideway's work

## Who do I go to for advice?

Independent Advisory Service (IAS) Helpline for independent advice:

**0800 917 8845** or [info@tidewayias.co.uk](mailto:info@tidewayias.co.uk)

Tideway's Mitigation and Compensation Lead, **Louise Walsh**, for personal assistance and advice: via Tideway Helpdesk **08000 30 80 80** or [helpdesk@tideway.london](mailto:helpdesk@tideway.london) or direct **07971 077165** or [louise.walsh@tideway.london](mailto:louise.walsh@tideway.london)

## How do I submit my claim?

Louise can submit your claim to the Independent Compensation Panel (ICP) on your behalf, or

You can submit your claim direct to the ICP: [admin@tidewayicp.london](mailto:admin@tidewayicp.london)

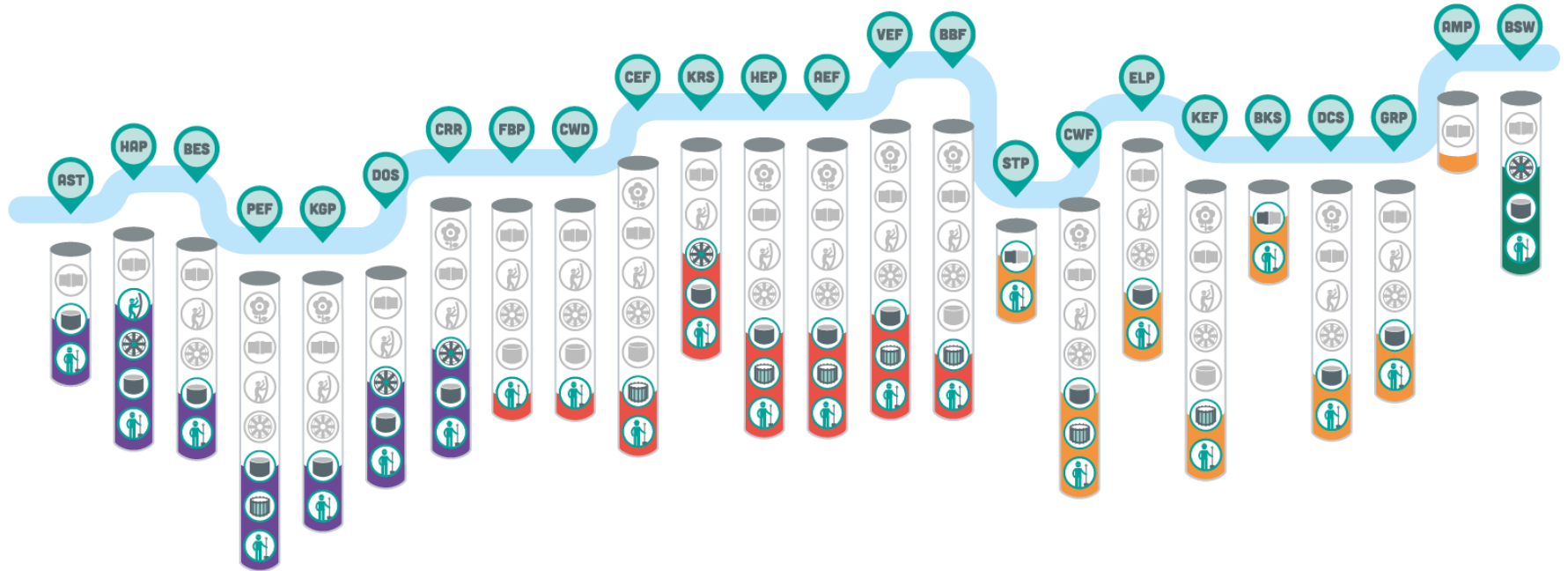
The IAS can send you a claim form, or you can download a claim form from the Tideway website: [www.tideway.london/help-advice/compensation-information/Independent-Compensation-Panel](http://www.tideway.london/help-advice/compensation-information/Independent-Compensation-Panel)

# **Project wide update**

**Jamie Gray – Stakeholder & Consents Manager**

# Building the Super Sewer

Summer 2019

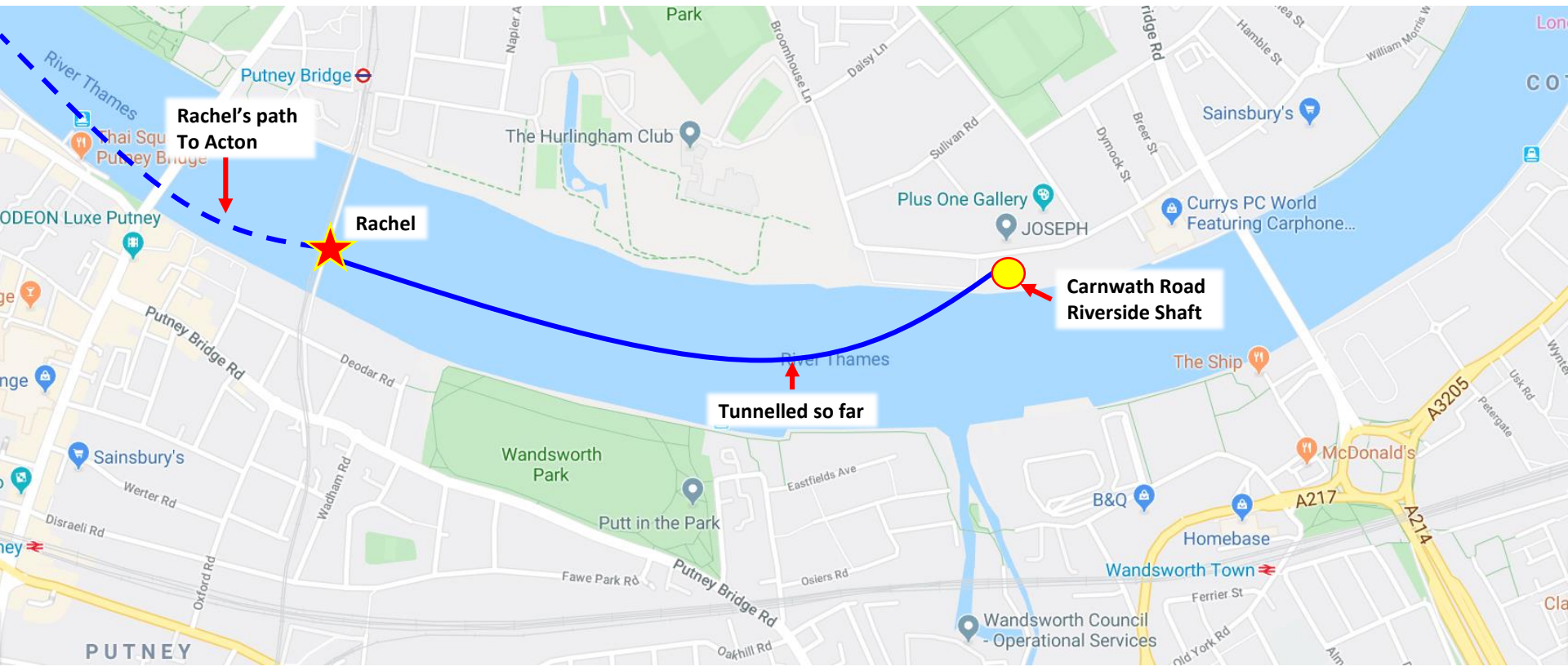


## KEY

-  Site Preparation
-  Cofferdam Built
-  Shaft Built
-  Tunnelling
-  Secondary Lining
-  Sewer Connections
-  Public Realm

- West Sites
- Central Sites
- East Sites
- Beckton Sewage Treatment Works





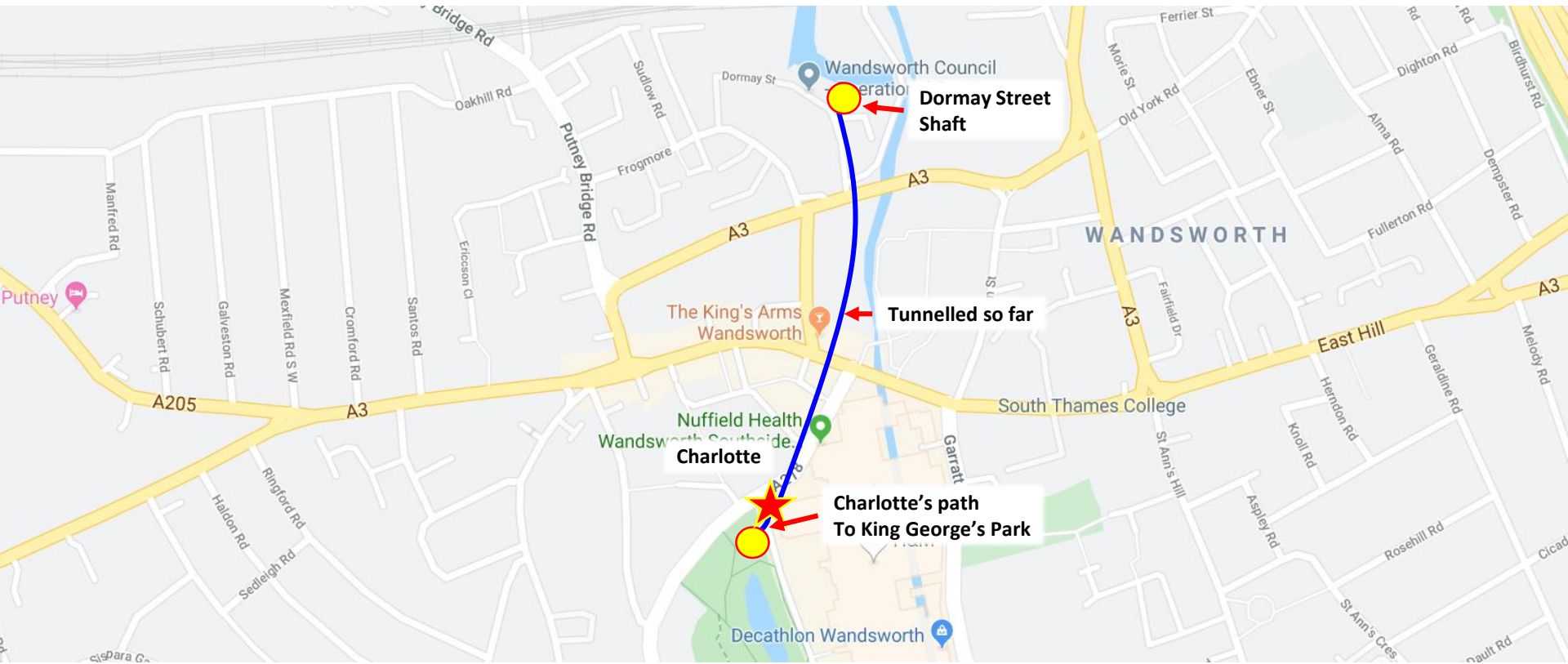
**Rachel's path  
To Acton**

**Rachel**

**Tunnelled so far**

**Carnwath Road  
Riverside Shaft**

**PUTNEY**



**Dormay Street Shaft**

**Tunnelled so far**

**Charlotte's path To King George's Park**

# Project update

Watch our time lapse video to see what we've been up to over the past month:

<https://www.youtube.com/watch?v=Fkm-lioyhyl&feature=youtu.be>

# How to stay up to date



[en-gb.facebook.com/TidewayLondon/](https://en-gb.facebook.com/TidewayLondon/)



[www.instagram.com/tidewaylondon/](https://www.instagram.com/tidewaylondon/)



[www.linkedin.com/company/tideway-london/](https://www.linkedin.com/company/tideway-london/)



[twitter.com/TidewayLondon](https://twitter.com/TidewayLondon)

# @TidewayLondon

# Questions...?

