

HAMMERSMITH PUMPING STATION

Community Liaison Working Group

Tuesday 21 July 2020



Tideway





WELCOME

John Corcoran, Section Manager

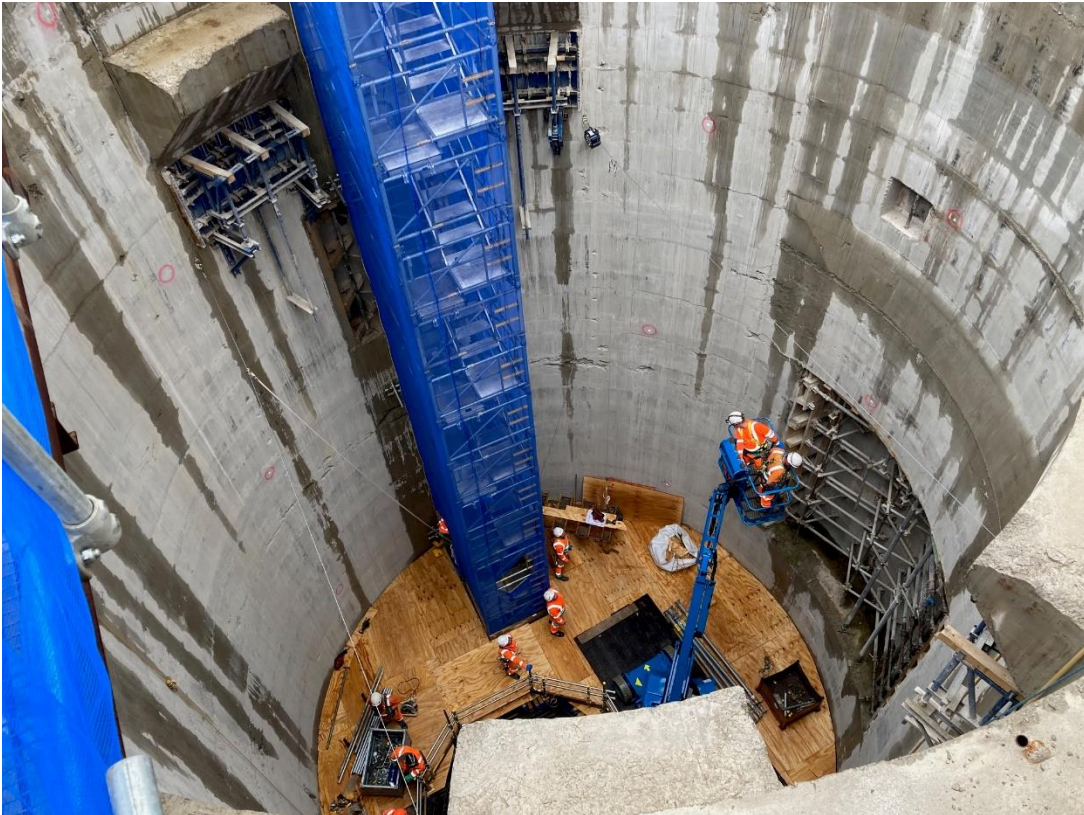
Works Update

- Tunnel construction completed.
- Shaft secondary lining completed
- Culvert excavation commenced



Shaft & Tunnel Construction

- Shaft secondary lining: Completed
- Shaft internal concreting – Preparing for installation of the stainless steel vortex



Culverts

- Excavation in progress
- Works to continue through 2020



Interception Chamber

- Continue casting internal walls
- Roof slab to be cast early in 2021
- Connection to Inlet Channel late 2020



Inlet Channel Works

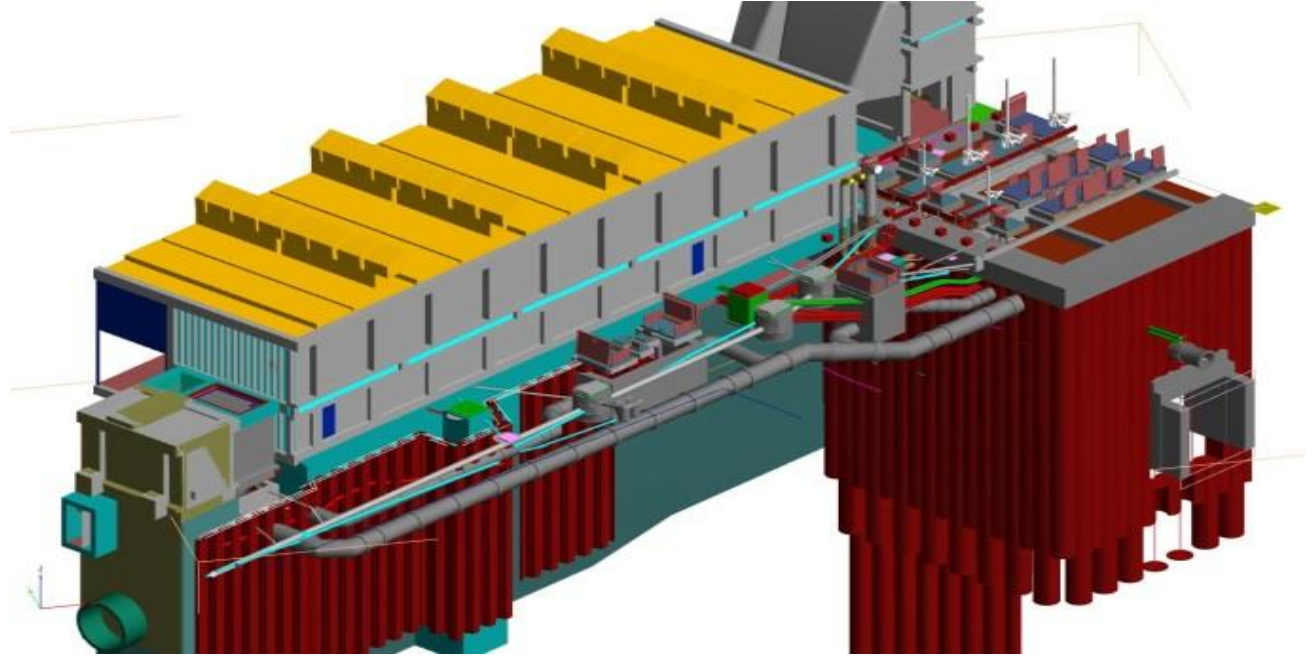
- Working on final connection of existing works to the new works

Inlet Channel – Existing wall to be cut out and new wall cast



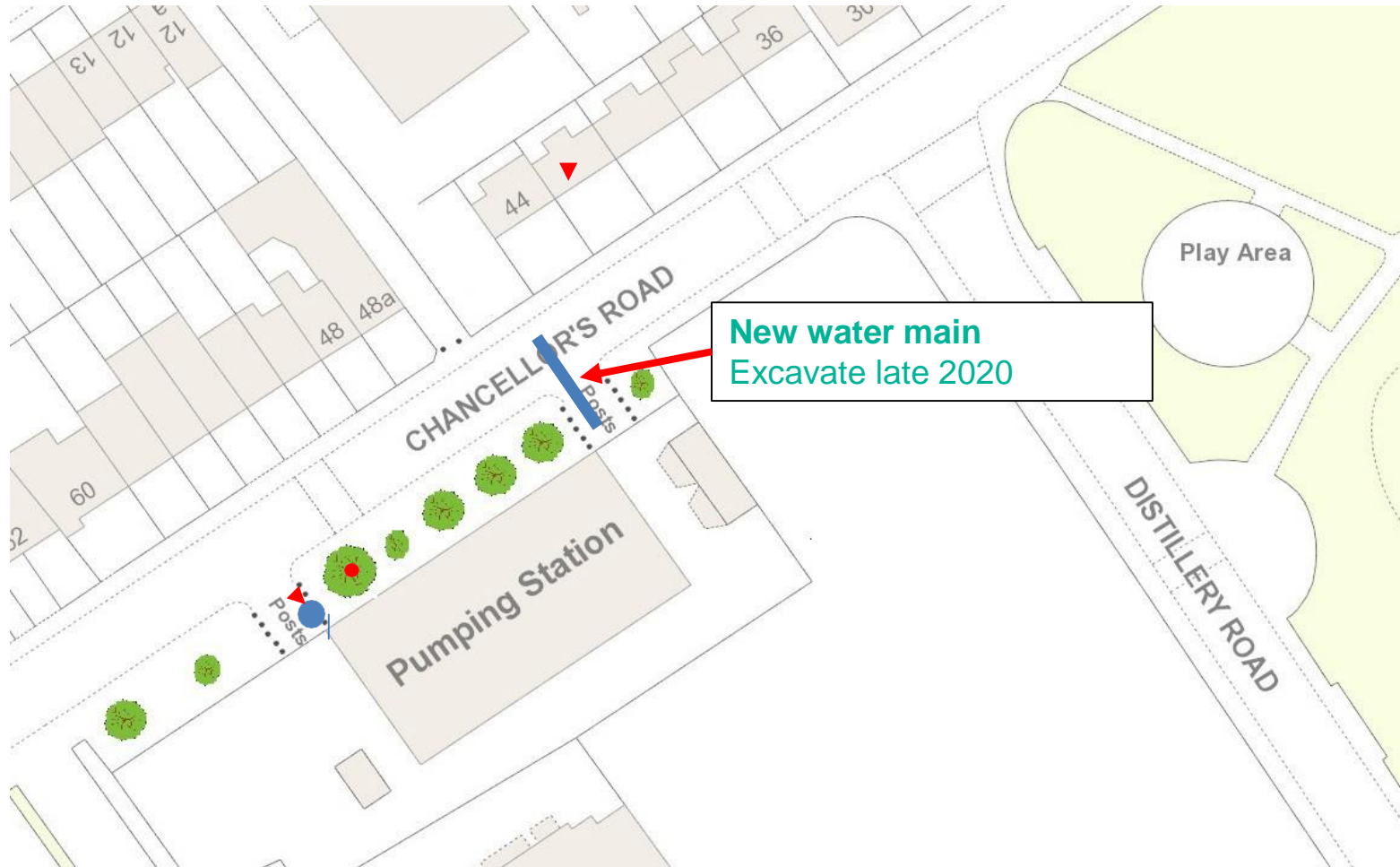
External MEICA Services

- We are continuing to construct new services around the pumping station

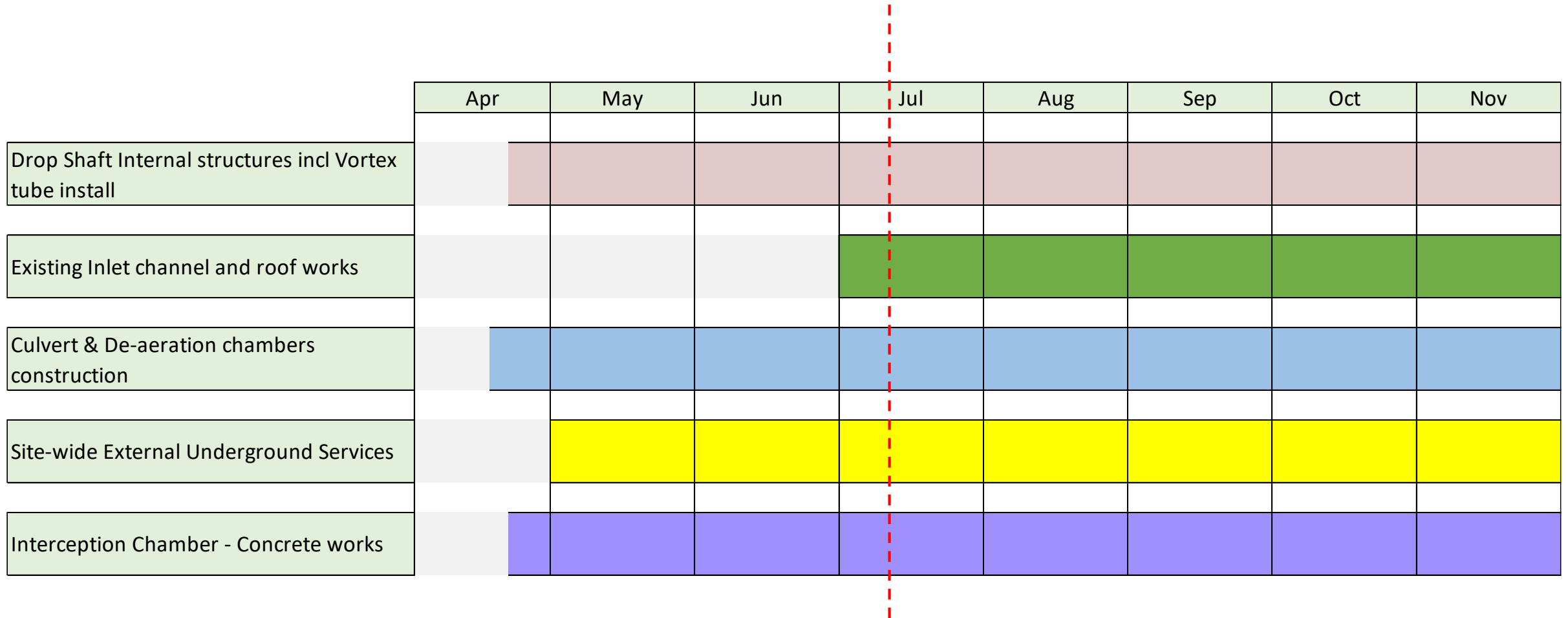


Rising Main & External Connections Update

- Water connection

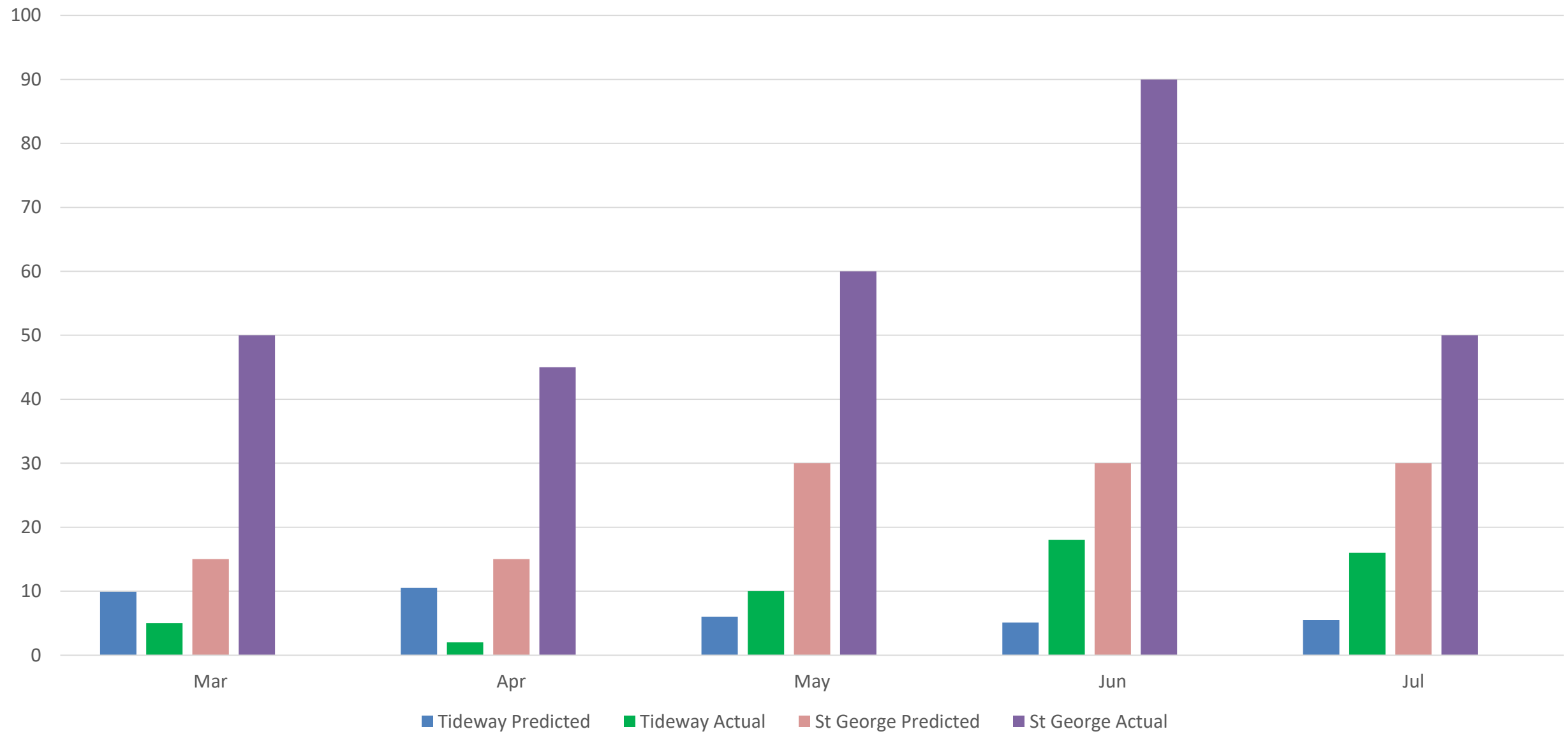


Next 4 Months



- Core working hours 8am-6pm Monday-Friday and 8am-1pm Saturday
- One hour start up and shutdown periods either side of working hours

Predicted & Actual Vehicle Movements





COMMUNITY ENGAGEMENT

Katie Ashton, Communications Manager

Community Engagement

- 54 Complaints/queries received since the last CLWG
 - 3 x lighting
 - 37 x noise and vibration
 - 14 x general enquiries

All enquiries and complaints have been responded to within 24 hours (where possible)



Call: 08000 30 80 80
Email: helpdesk@tideway.london
Write to: Freepost TIDEWAY



0800 316 9800

Available 24 hours, 7 days a week to answer all enquiries & complaints related to the operations and maintenance of the site

Community Engagement

- 9 x Information notices sent out since last meeting for:
 - Extended working hours
 - Parking bay suspension
 - Christmas shutdown
 - Breaking out works
 - Piling works
 - Piling works rescheduled date
 - Road closure notification
 - Breaking down of concrete piles
 - Abnormal load arrival & parking bay suspension
- 7 x Email notifications on general work updates

**During the Covid-19 closedown information sheets were issued by email only.*

How To Make A Claim if Affected By Tideway's Work

Who do I go to for advice?

Independent Advisory Service (IAS) Helpline for independent advice:

- 0800 917 8845 or info@tidewayias.co.uk
- Tideway's Compensation Officer, Louise Walsh, for personal assistance and advice
 - Helpdesk: 08000 30 80 80 / helpdesk@tideway.london or
 - Direct: 07971 077165 / louise.walsh@tideway.london

How do I submit my claim?

Louise can submit your claim to the Independent Compensation Panel (ICP) on your behalf, or you can submit your claim direct to the ICP: admin@tidewayicp.london

The IAS can send you a claim form, or you can download the form off the Tideway website: www.tideway.london/help-advice/compensation-information/Independent-Compensation-Panel

Community Engagement

- We have restarted our community investment activities within the Borough
- Actively seeking community groups to support



How To Stay Up To Date

INFORMATION SHEET



Tideway

Ref : 2140-TDWAY-TTUN-990-ZZ-Report-700004
March 2020



Balfour Beatty

Information Sheets



Quarterly Newsletter

If you would like to be added to our mailing list for works updates/notifications, email Helpdesk@Tideway.London

TUNNELLING UPDATE



Tideway

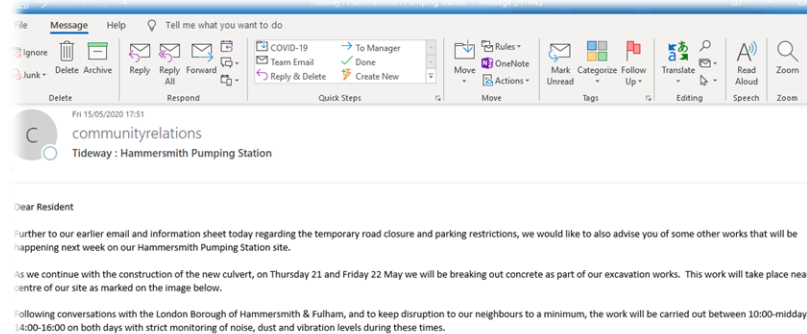


Balfour Beatty

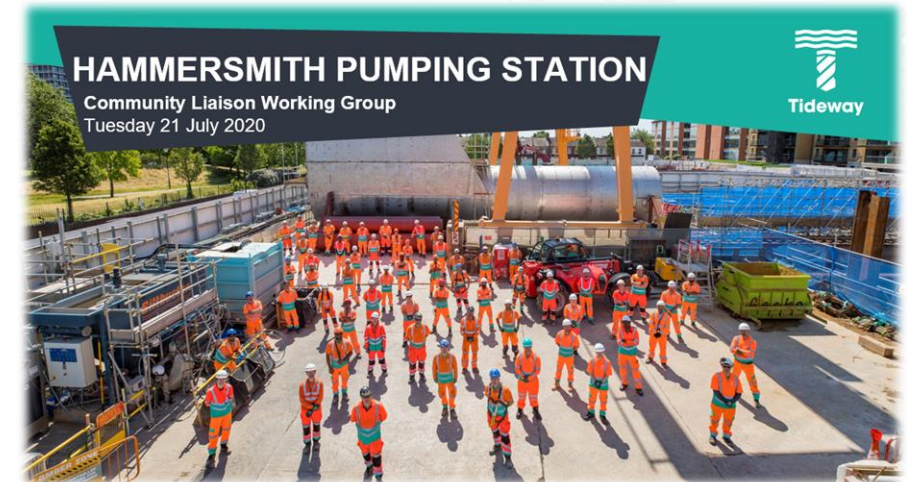
TBM Rachel:
Carnwath Road to Acton Storm Tanks
2,109 Rings Installed | 3,650m Tunnelled

TBM Charlotte:
King George's Park to Carnwath Road
617 Rings Installed | 648m Tunnelled

Monthly tunnelling updates

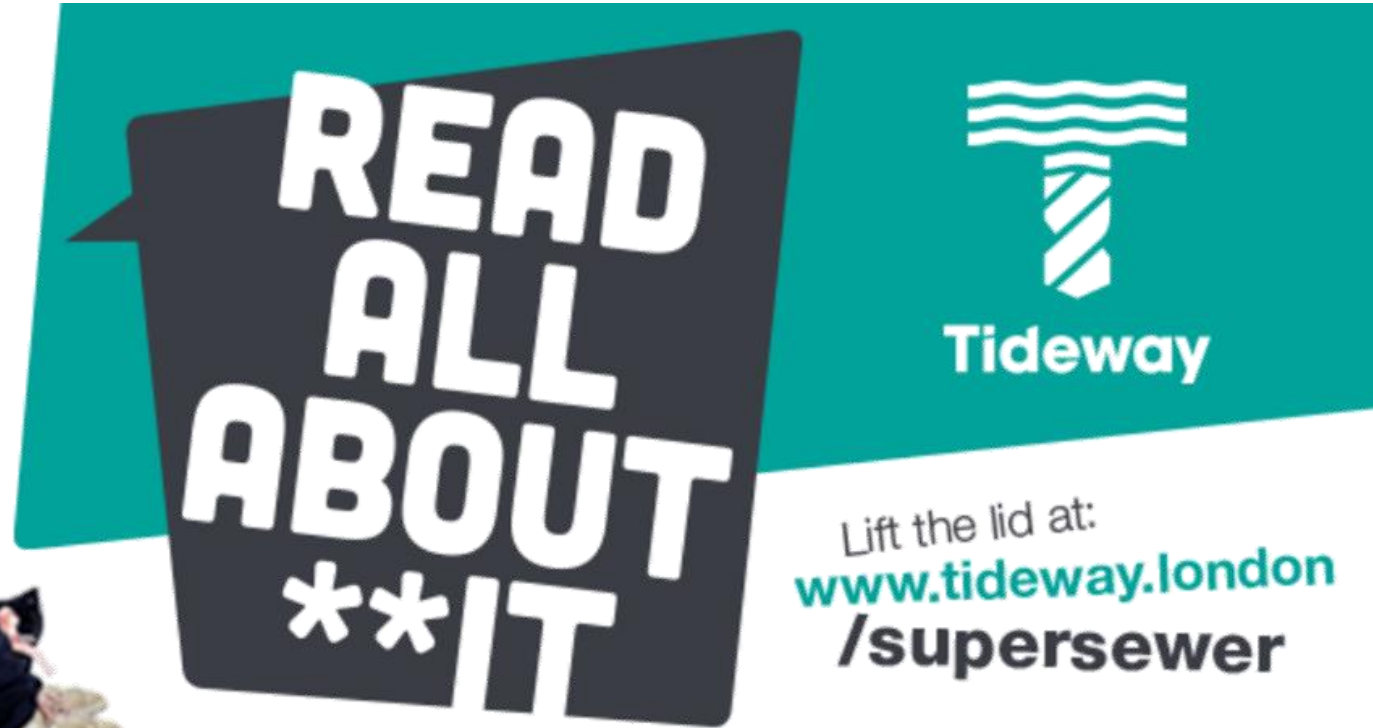


Email Notifications



Community Liaison Working Group Meeting's

How To Stay Up To Date



en-gb.facebook.com/TidewayLondon/



www.instagram.com/tidewaylondon/



www.linkedin.com/company/tideway-london/



twitter.com/TidewayLondon

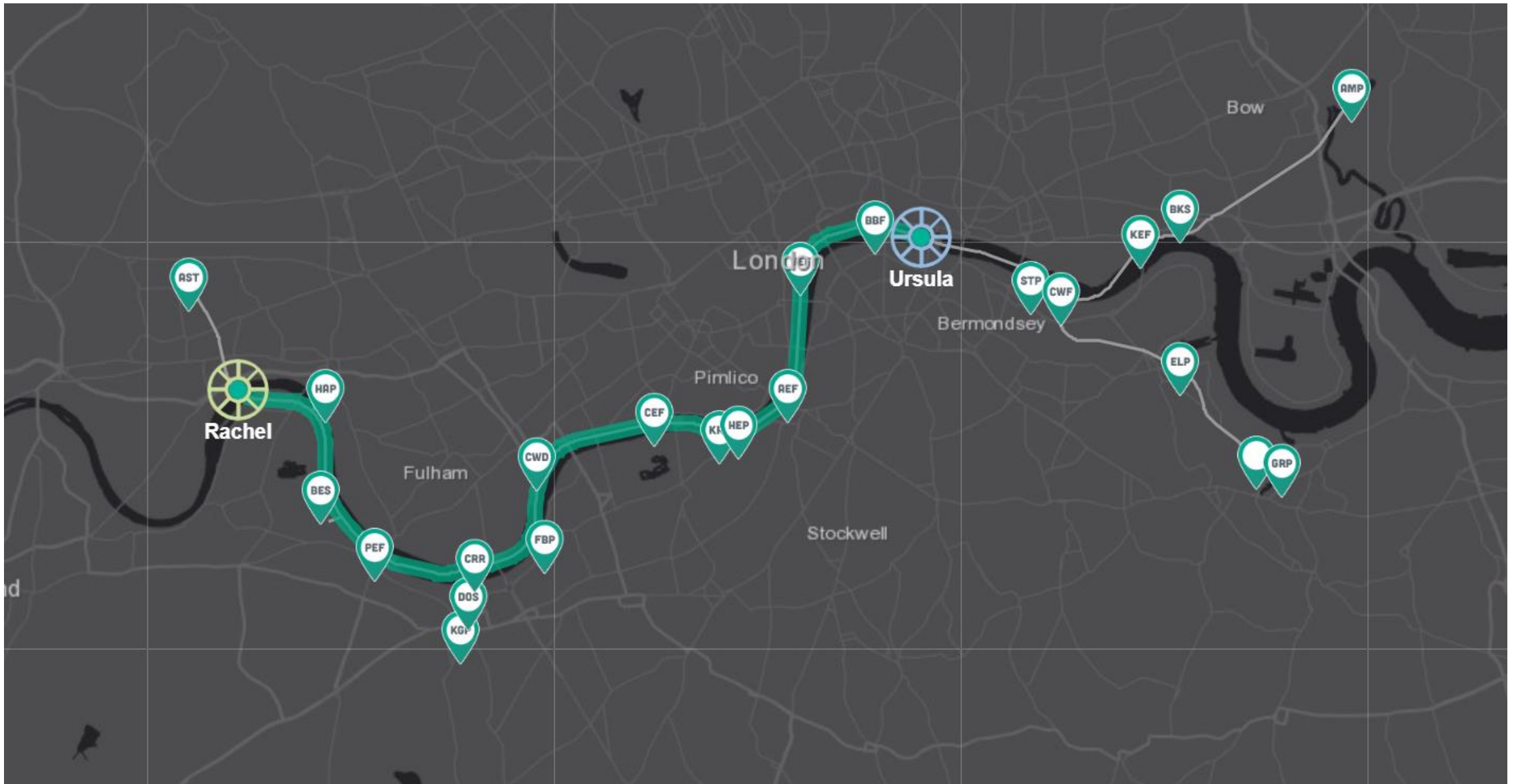
[@TidewayLondon](https://twitter.com/TidewayLondon)

OVERALL PROJECT UPDATE

Andeep Gehlot, Communications Lead (West)

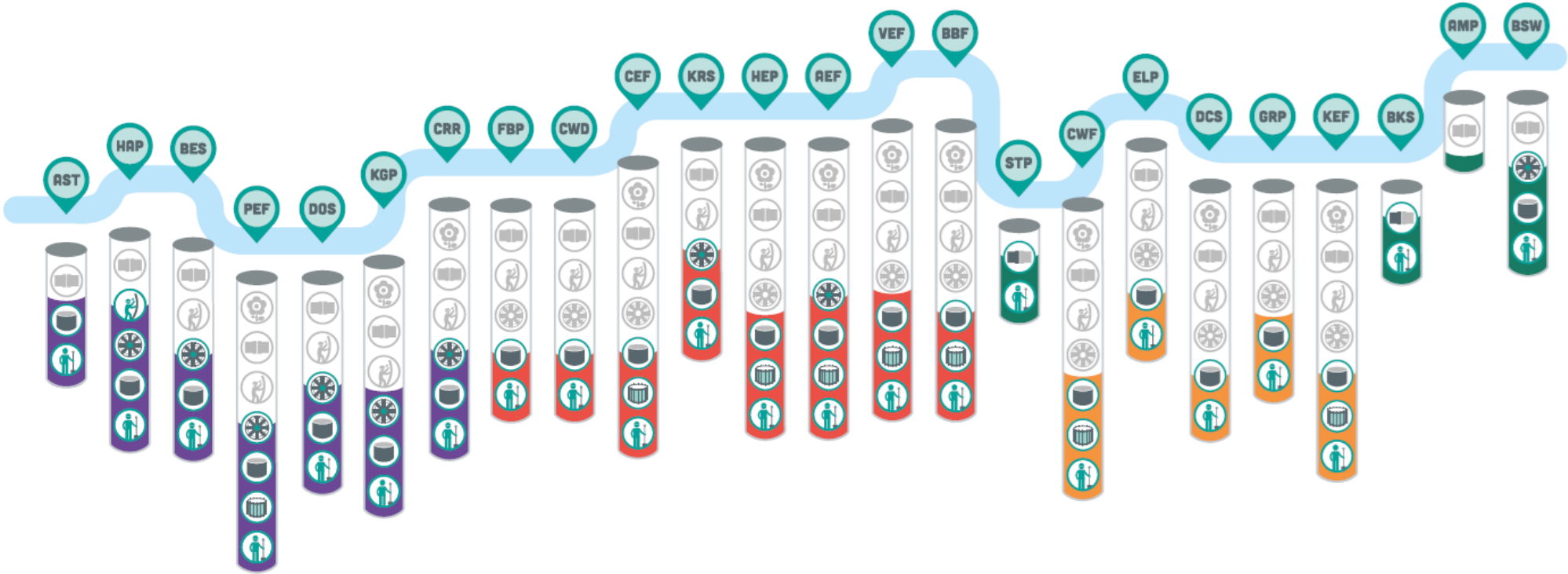
Where are the TBMs?

The Tideway TBM Tracker: www.tideway.london/tbm-tracker/



BUILDING THE SUPER SEWER

Spring 2020



KEY

- Site Preparation
- Cofferdam Built
- Shaft Construction
- Tunnelling
- Secondary Lining
- Sewer Connections
- Public Realm
- West Sites
- Central Sites
- East Sites
- Thames Water Sites



Tideway

RECONNECTING LONDON WITH THE RIVER THAMES

#SuperSewer

www.tideway.london