

DORMAY STREET & KING GEORGE'S PARK

Community Liaison Working Group
Thursday 10 September 2020



Tideway





WELCOME

Frogmore Connection Tunnel



Works Update: January 2020 - July 2020

- Tunnel boring machine, Charlotte completed the 600m Dormay Street to Carnwarth Road drive.



Works Update: July 2020

- Breakthrough on 1 July into the Carnwarth Road shaft



Works Update: January 2020 – September 2020

- Secondary lining of Frogmore Connection Tunnel from King Georges Park to Dormay Street.

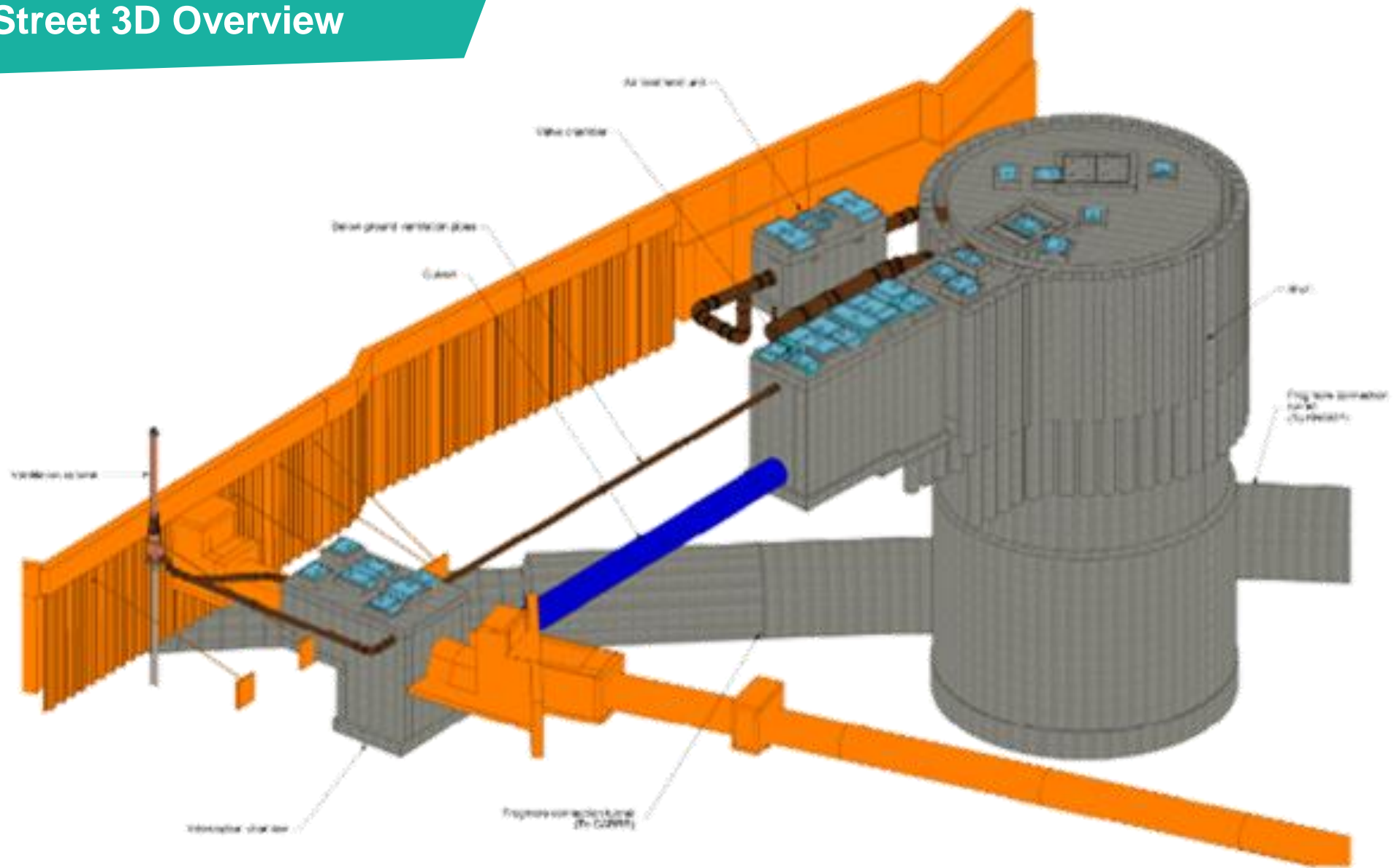


A dark blue trapezoidal graphic with a white border, tilted slightly to the right. It contains the text 'DORMAY STREET' in white, bold, sans-serif capital letters.

DORMAY STREET

Kevin Dollard, Section Manager

Dormay Street 3D Overview

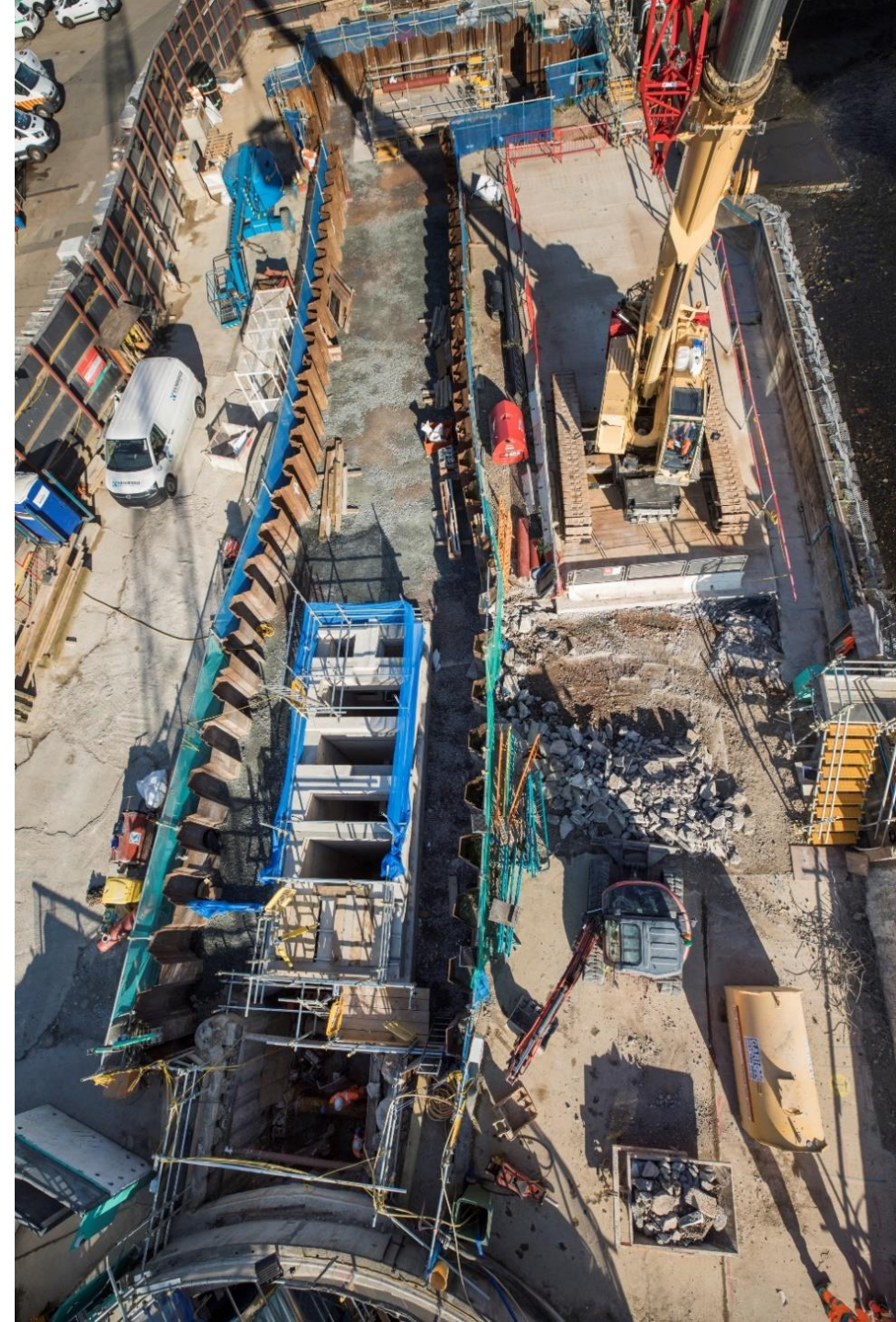


Dormay Street Overview



Works Update: September 2019 – July 2020

- Hydraulic Structures completed at Dormay Street including the construction of:
 - Interception chamber
 - Connection culvert
 - Valve chamber
 - Backfilling around structures



Works Update: January 2020

- Permanent rocker pipes installed for combined sewer overflow and temporary flume alterations complete



Works Update: August 2020

- Shaft breakthrough completed

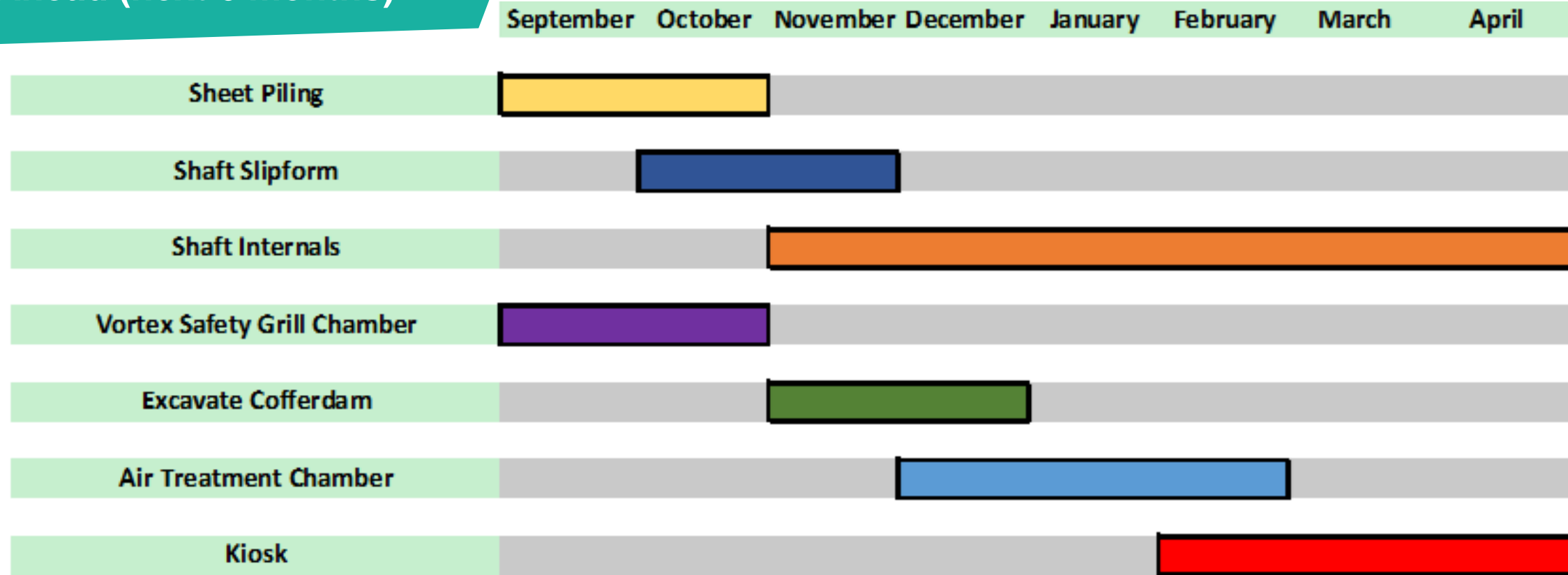


Works Update: September 2020

- Commenced preparation works for air treatment chamber (ATC) and mechanical and electrical control room cofferdam extension



Look Ahead (next 6 months)



- Core working hours 8am-6pm Monday – Friday and 8am-1pm Saturday. One hour start up and shut down periods either side of working hours
- Shaft Slipform 24/7 works
- During tunnelling through ZOI of National Grid Power Tunnel, 24/7 work will commence for a period of 12 days until this ZOI is passed.

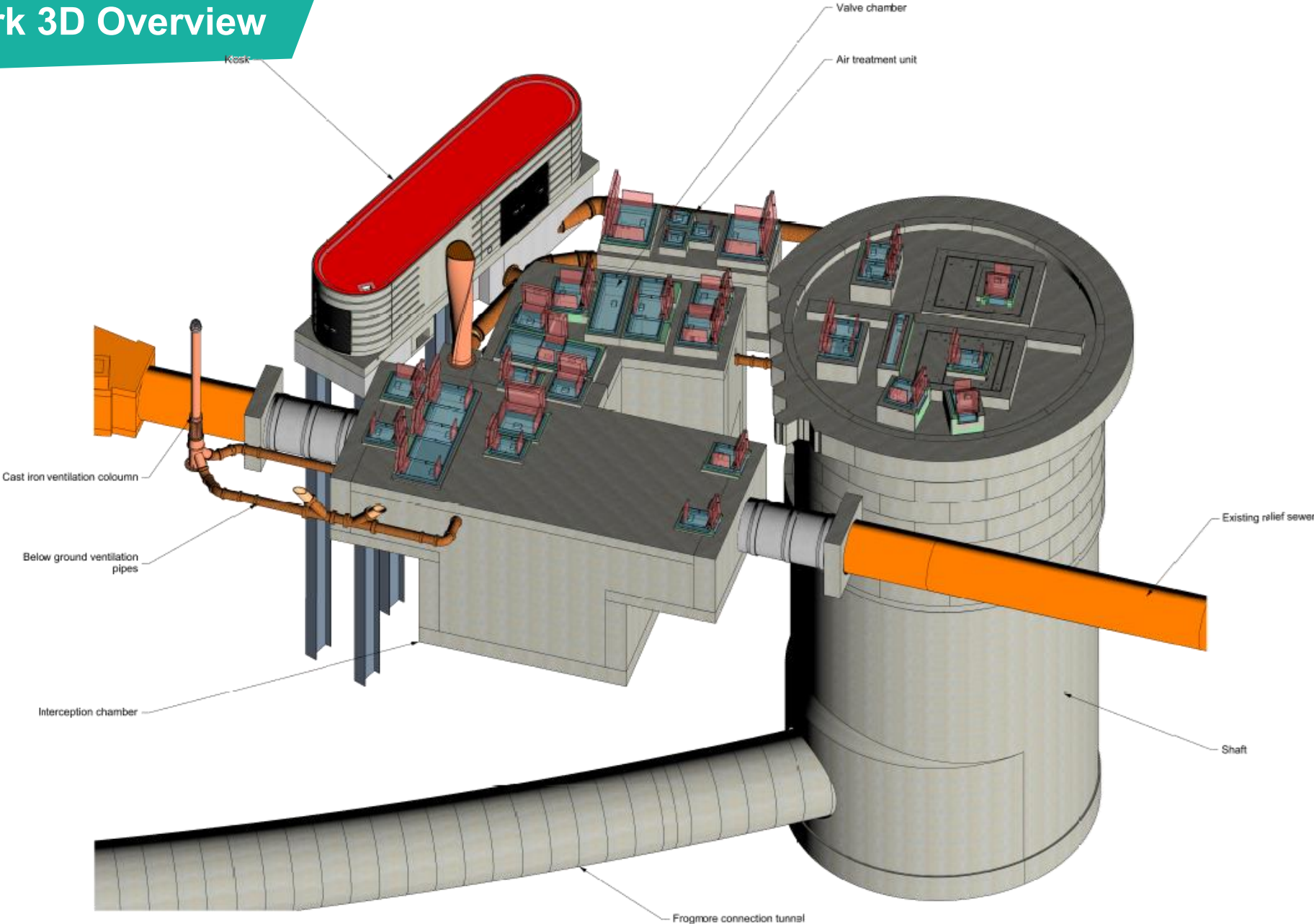


QUESTIONS?

KING GEORGE'S PARK

Kevin Dollard, Section Manager

King George's Park 3D Overview



Works Update: September 2020

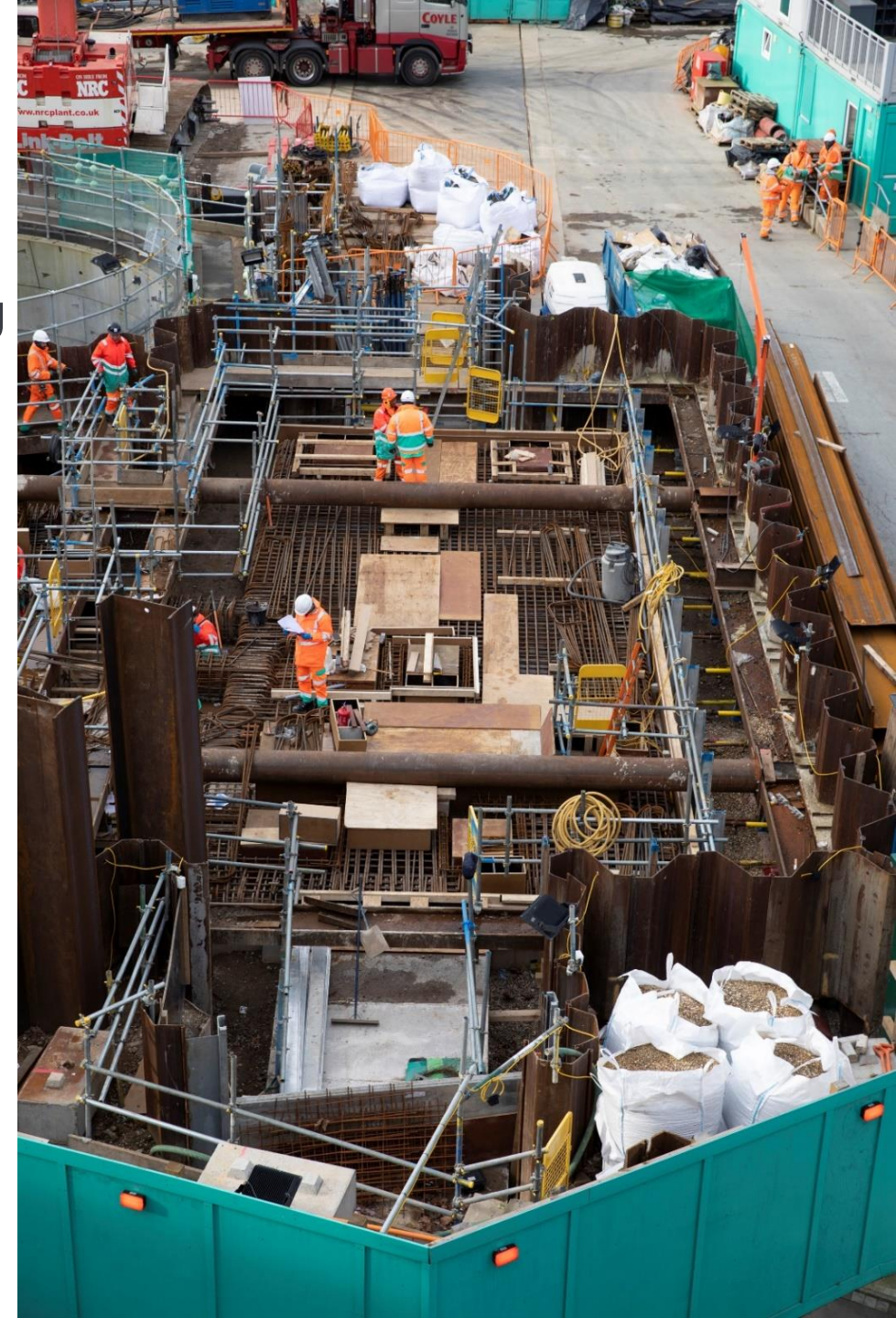
- Interception rocker pipes installed and walls completed



- Valve Chamber walls and penstock wall completed

Works Update: September 2020

- Interception chamber and Valve chamber roof and benching completed



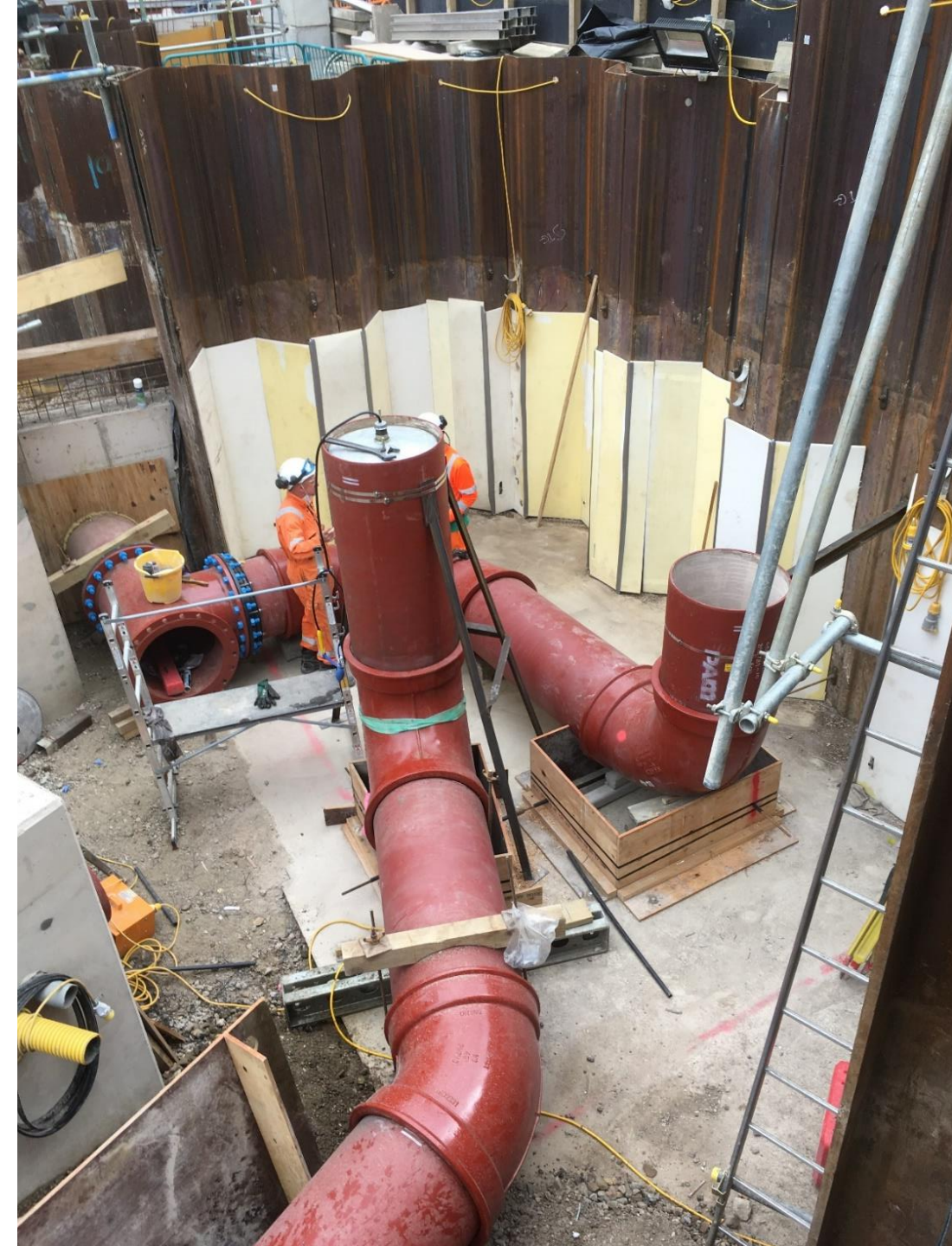
Works Update: September 2020

- Mechanical and electrical control rooms and ATC cofferdam installed



Works Update: September 2020

- Mechanical and electrical control room and ATC cofferdam excavation completed
- Ventilation pipes installed



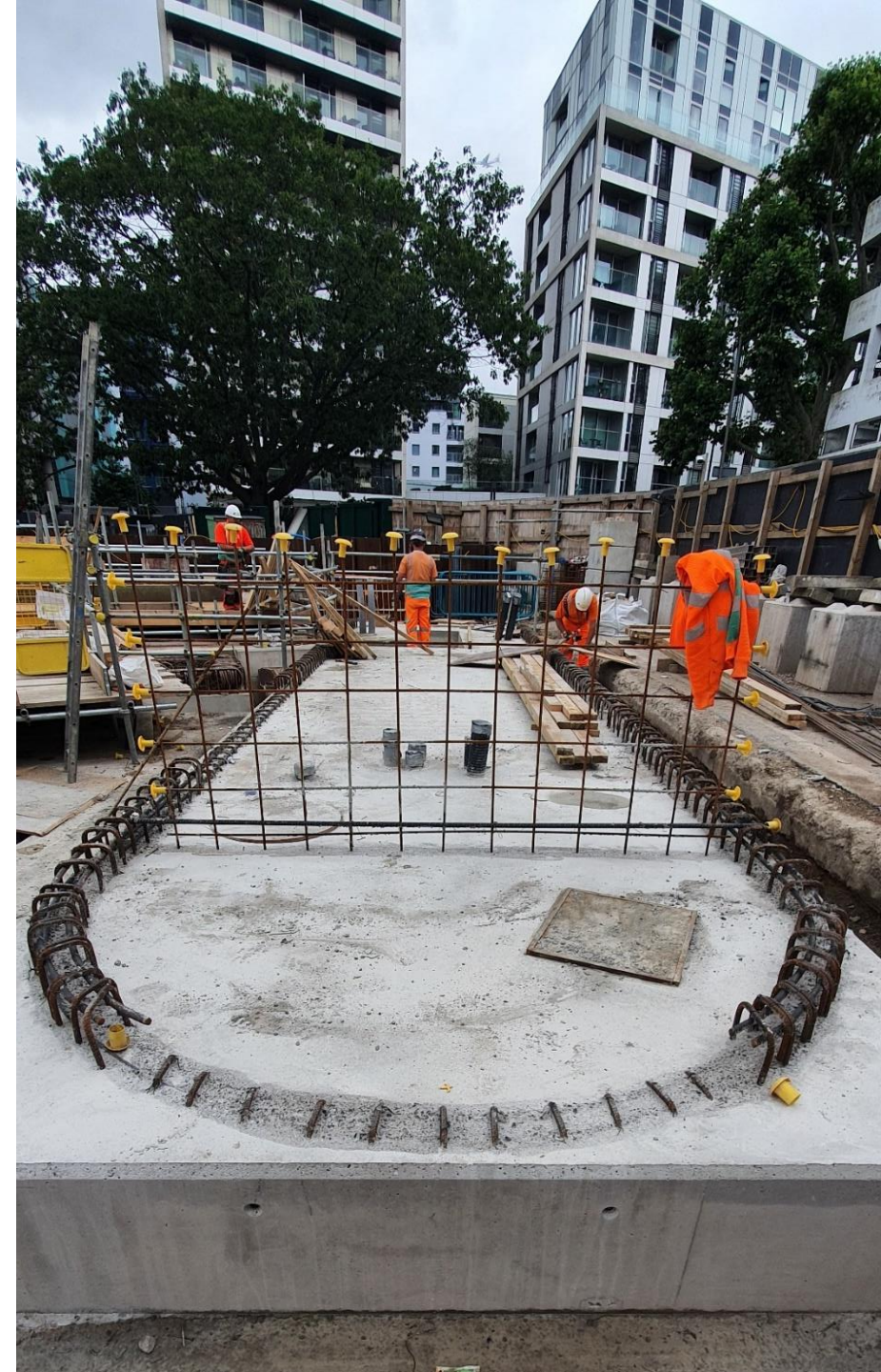
Works Update: September 2020

- ATC construction completed



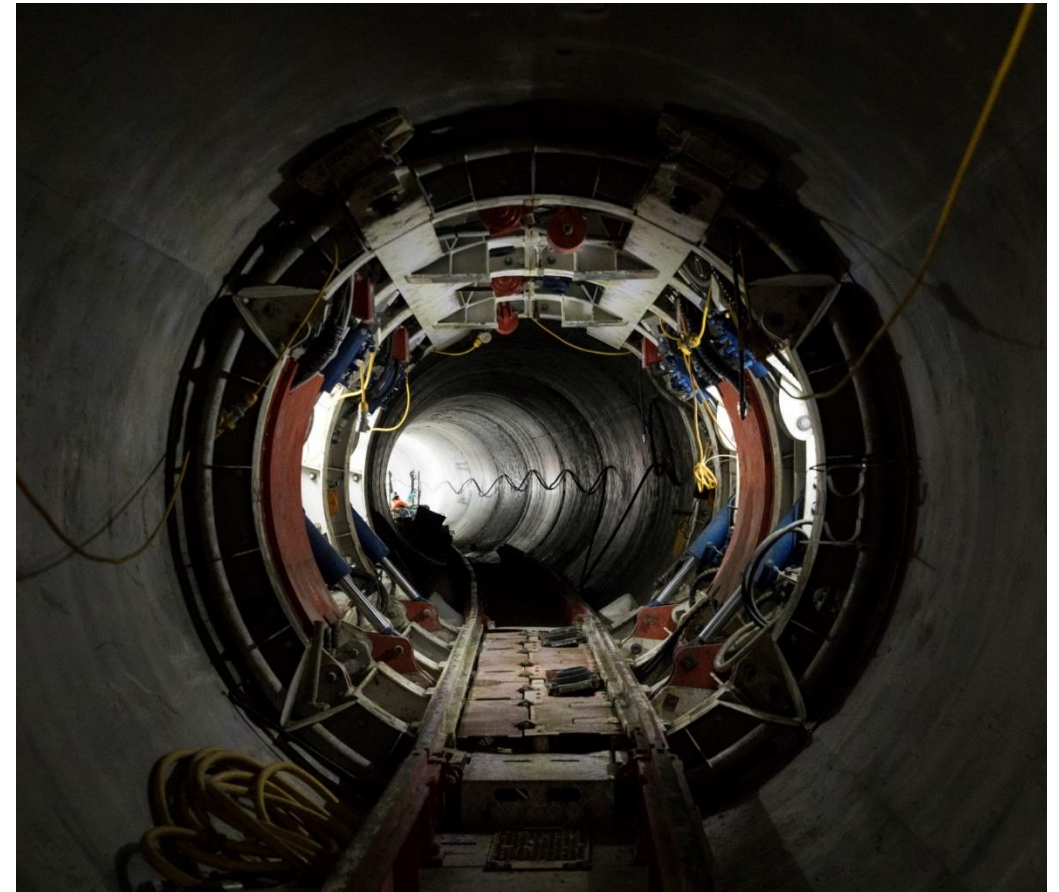
Works Update: September 2020

- Mechanical and electrical control room construction completed



Works Update: September 2020

- Frogmore Connection Tunnel (Dormay Street to King George's Park Drive) secondary lining works



Look Ahead (next 6 months)

	September	October	November	December	January	February	March	April	May	June	July	August
Shaft Secondary Lining												
Shaft Slipform												
Shaft Internals												
Kiosk Superstructure												
MEICA Installation Works												
Architectural and Landscaping												

- Core working hours 8am-6pm Monday – Friday and 8am-1pm Saturday.. One hour start up and shut down periods either side of working hours.
- Shaft Slipform will for 12 days run 24/7
- Any tidal working outside of standard working hours will be agreed with the local authority through a Section 61 consent, dispensation or variation and will be communicated to relevant stakeholders.

Landscaping



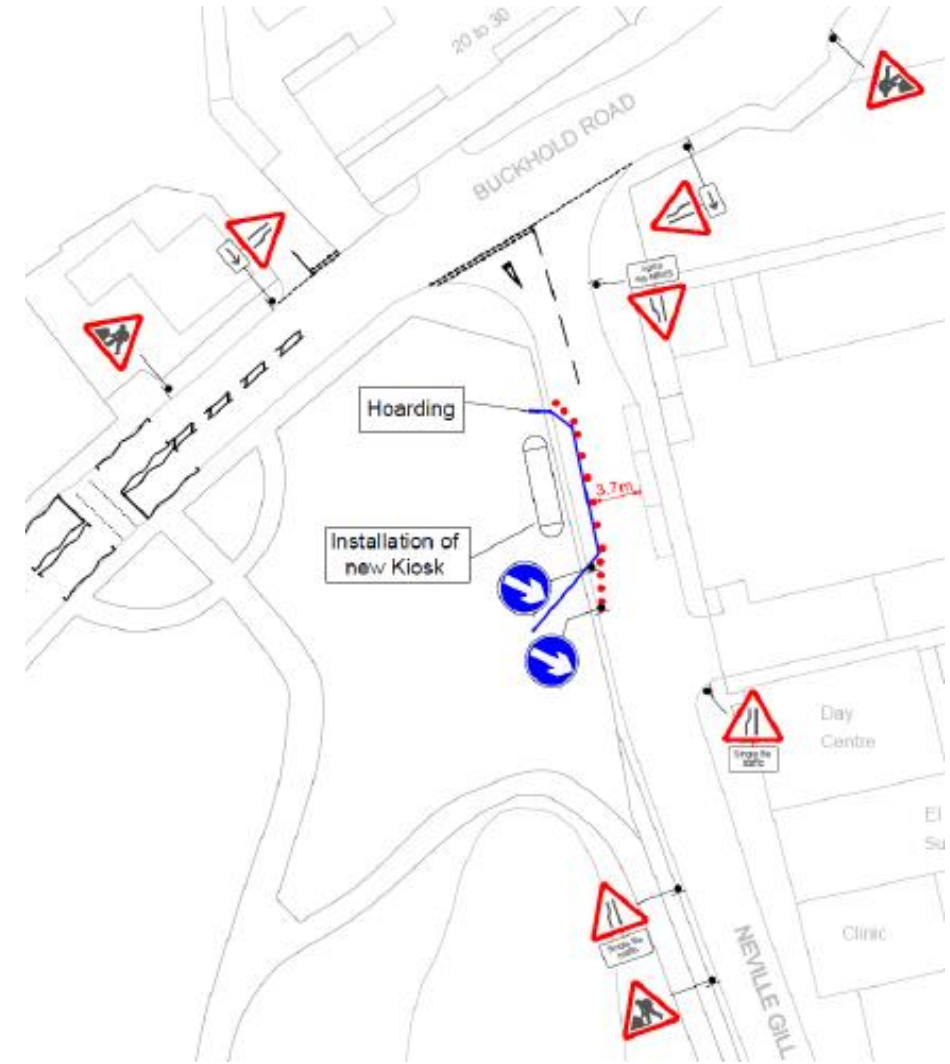
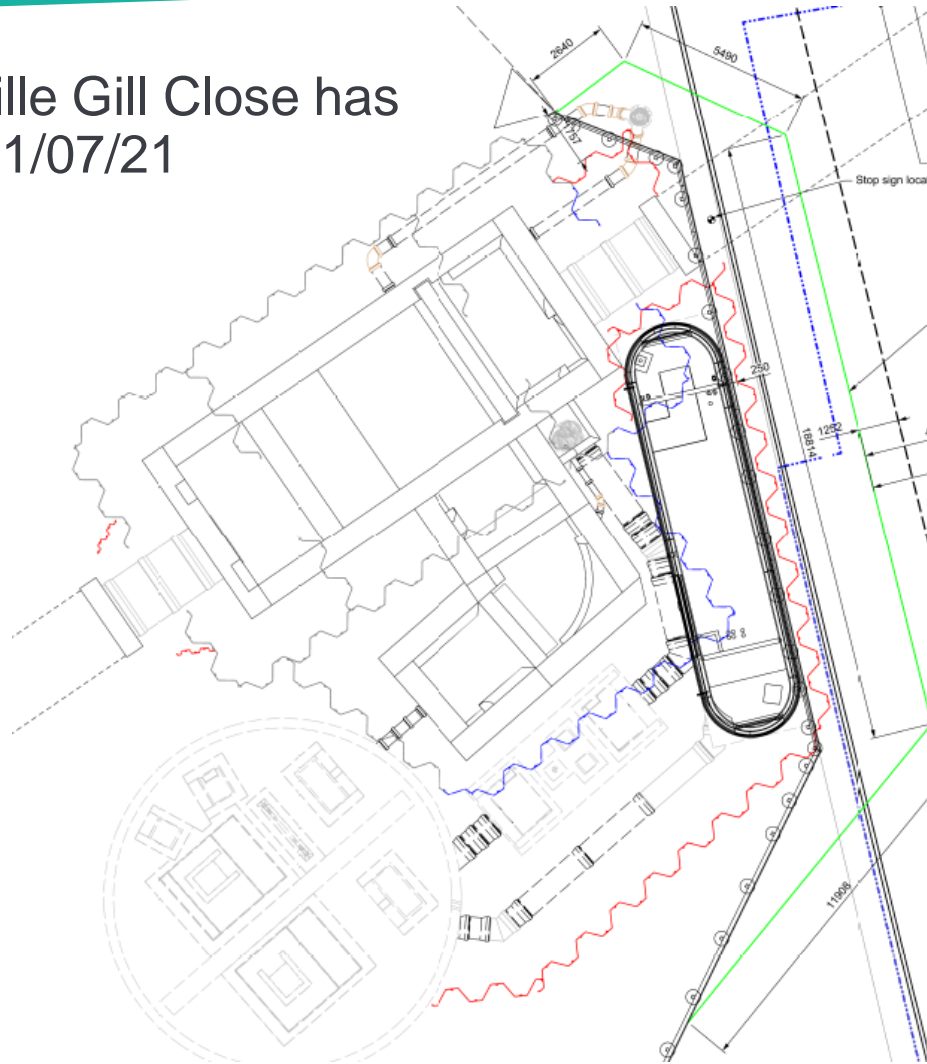
- Design incorporates new public realm area, ventilation column/mechanical and electrical control room and hard/soft landscaping

- Approved by London Borough of Wandsworth on 30 August 2019



Mechanical & Electrical Control Room

- The closure of Neville Gill Close has been extended to 31/07/21



- Area required for temporary works installation. Traffic management scheme in place to facilitate the construction of the mechanical and electrical control room.



QUESTIONS?



COMMUNITY ENGAGEMENT

Katie Ashton, Communications Manager

How To Stay Up To Date

INFORMATION SHEET

Ref : 2140-TDWAY-TTUN-990-ZZ-Report-700004
March 2020



Tideway



Balfour Beatty

Information Sheets



Quarterly Newsletter

TUNNELLING UPDATE



Tideway



TBM Rachel:
Carnwath Road to Acton Storm Tanks
2,109 Rings Installed | 3,650m Tunnelled

TBM Charlotte:
King George's Park to Carnwath Road
617 Rings Installed | 648m Tunnelled

Monthly tunnelling updates



Community Liaison Working Group Meeting's

If you would like to be added to our mailing list for works updates/notifications, email Helpdesk@Tideway.London

Community Investment

- Works undertaken to refurbish a bench in Southfields before the lockdown.
- Activities have safely restarted.



Community Engagement

- 8 noise and vibration and 13 general enquires received since last meeting for both Dormay Street and King George's Park
- 3 compliments received
- All enquiries have been responded to within 24 hours (where possible)



Call: 08000 30 80 80

Email: helpdesk@tideway.london

Write to: Freepost TIDEWAY

How To Make A Claim if Affected By Tideway's Work

Who do I go to for advice?

Independent Advisory Service (IAS) Helpline for independent advice:

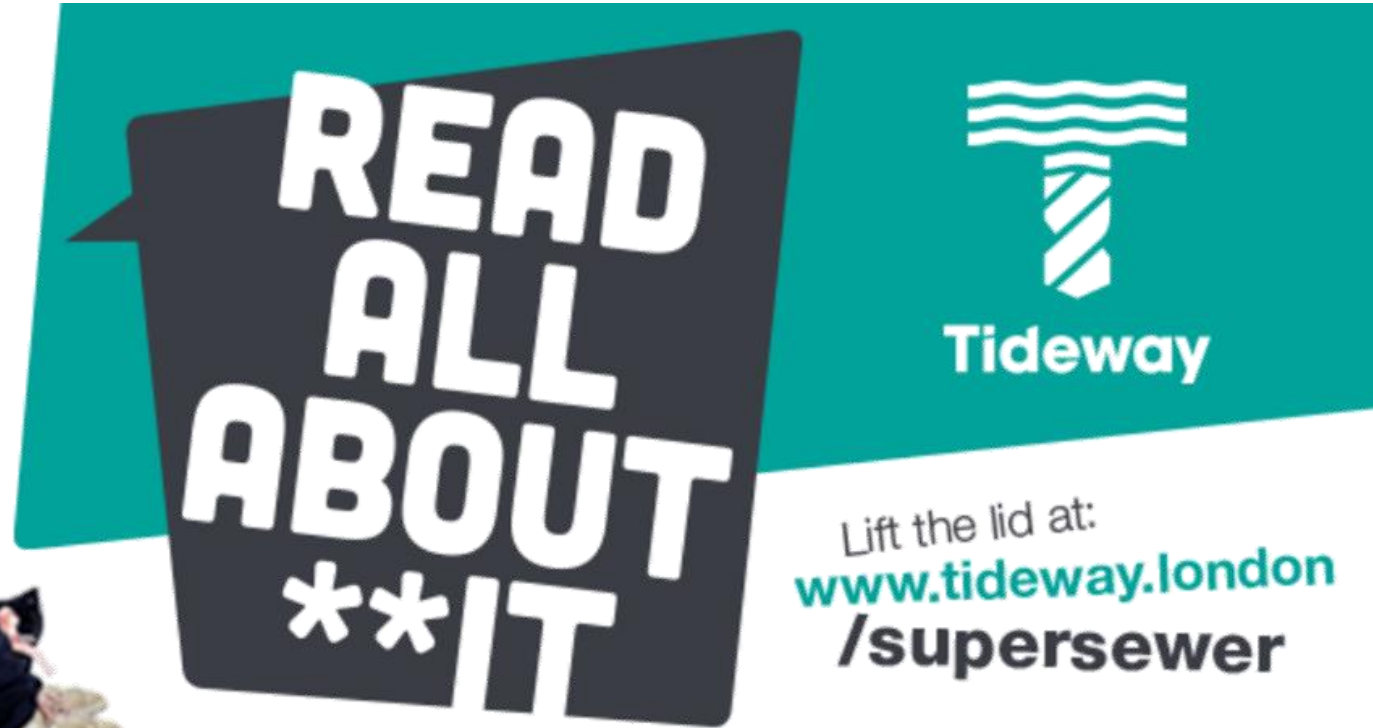
- 0800 917 8845 or info@tidewayias.co.uk
- Tideway's Compensation Officer, Louise Walsh, for personal assistance and advice
 - Helpdesk: 08000 30 80 80 / helpdesk@tideway.london or
 - Direct: 07971 077165 / louise.walsh@tideway.london

How do I submit my claim?

Louise can submit your claim to the Independent Compensation Panel (ICP) on your behalf, or you can submit your claim direct to the ICP: admin@tidewayicp.london

The IAS can send you a claim form, or you can download the form off the Tideway website: www.tideway.london/help-advice/compensation-information/Independent-Compensation-Panel

How to Stay up to Date



en-gb.facebook.com/TidewayLondon/



www.instagram.com/tidewaylondon/



www.linkedin.com/company/tideway-london/



twitter.com/TidewayLondon

@TidewayLondon



QUESTIONS?



OVERALL PROJECT UPDATE

Andeep Gehlot, Communications Lead (West)

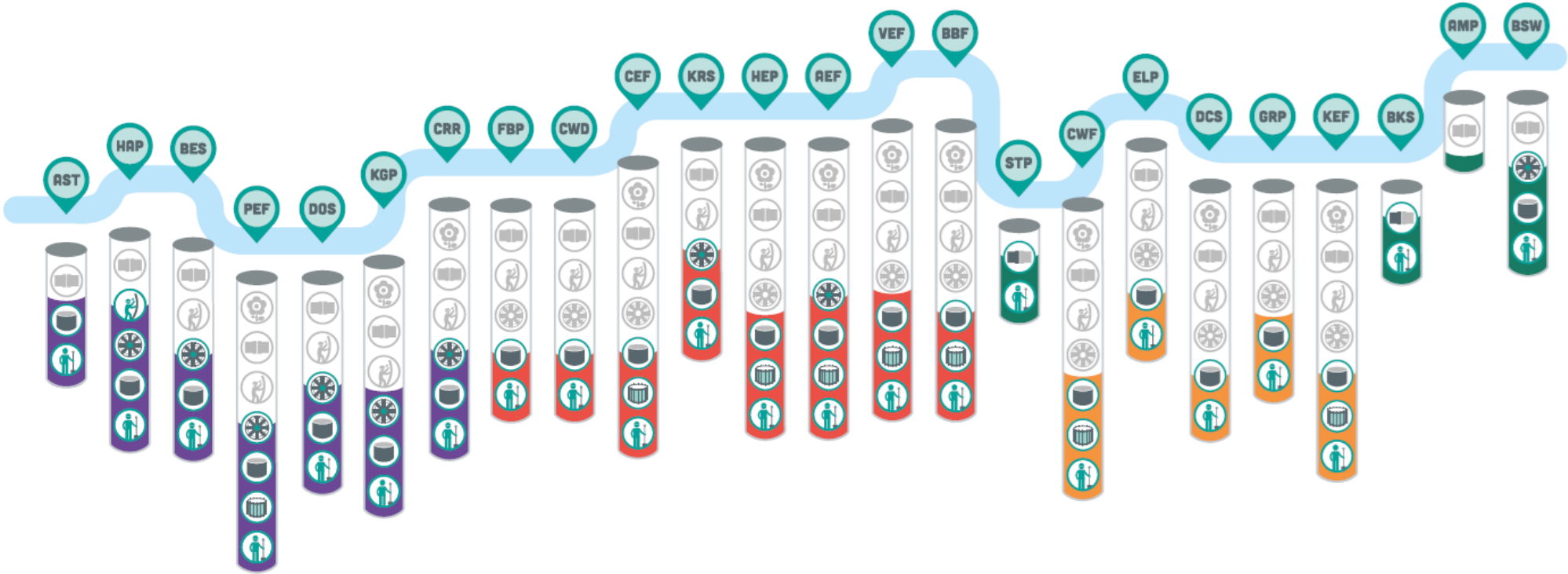
Where are the TBMs?

The Tideway TBM Tracker: www.tideway.london/tbm-tracker/



BUILDING THE SUPER SEWER

Spring 2020



KEY

- Site Preparation
 - Cofferdam Built
 - Shaft Construction
 - Tunnelling
 - Secondary Lining
 - Sewer Connections
 - Public Realm
-
- West Sites
 - Central Sites
 - East Sites
 - Thames Water Sites



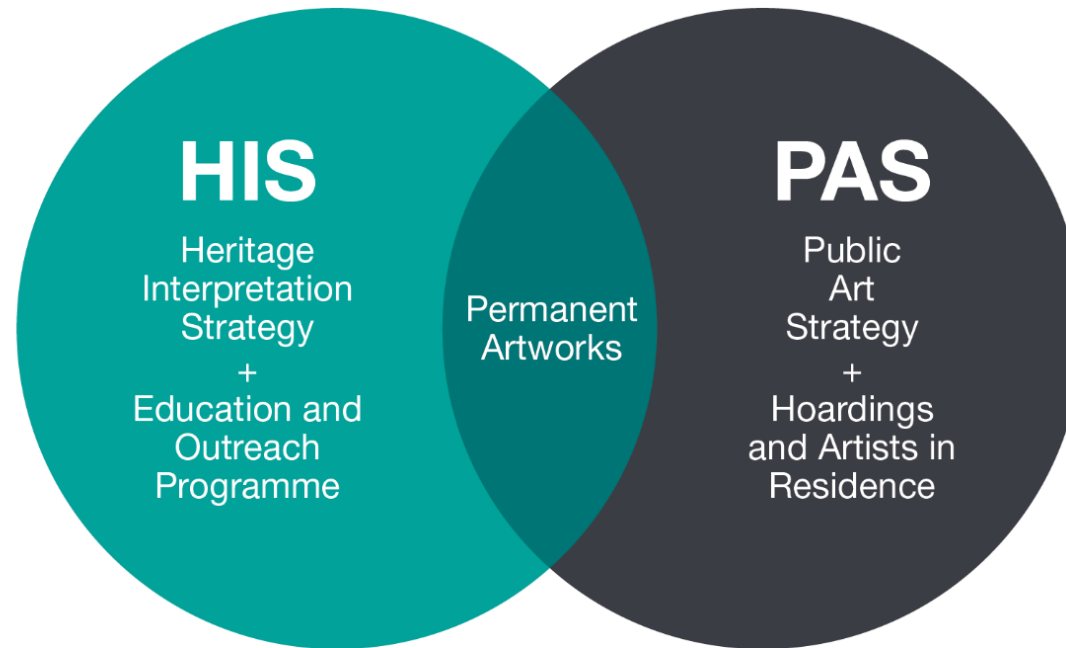
QUESTIONS?



PUBLIC ART & POETRY

Clare Donnelly, Tideway's Lead Architect

CONTEMPORARY CULTURE LIQUID HISTORY



- 21 Permanent commissions
- 14 Hoarding commissions & community engagement
- 2 Artists in Residence commissions
- 1 Poetry commission (19 poems, 9 sites)
- 1 Manhole cover commission
- 1 Signage & wayfinding commission

West – Recreation to industry: A Society in Transition



DORMAY STREET HERITAGE NARRATIVE

Recreation to Industry: Society in Transition.

The site is the location of the first factory developed by Sir Henry Wellcome, who founded both a pharmaceutical company and a philanthropic trust that have been at the forefront of global scientific research to free humanity from disease.

Artist: Yemi Awosile, *Extract and Distil*

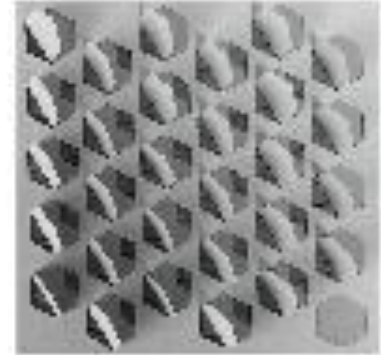
Dormay Street



Visual Research Dormay Street Concept



1.



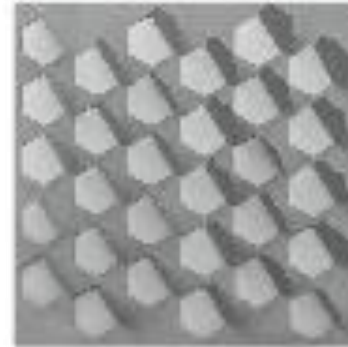
2.



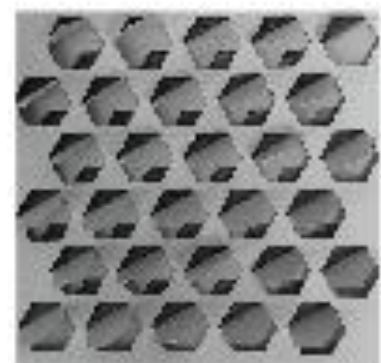
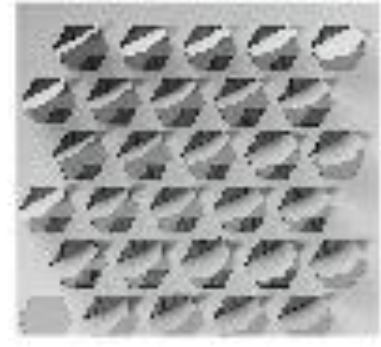
3.



5.



4.

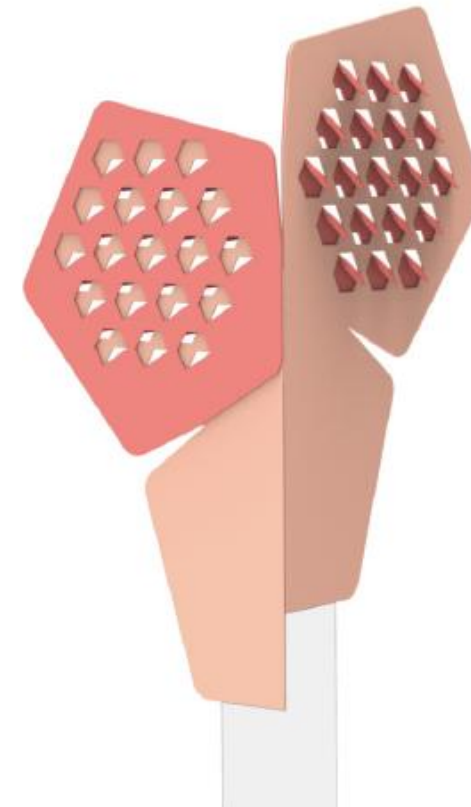
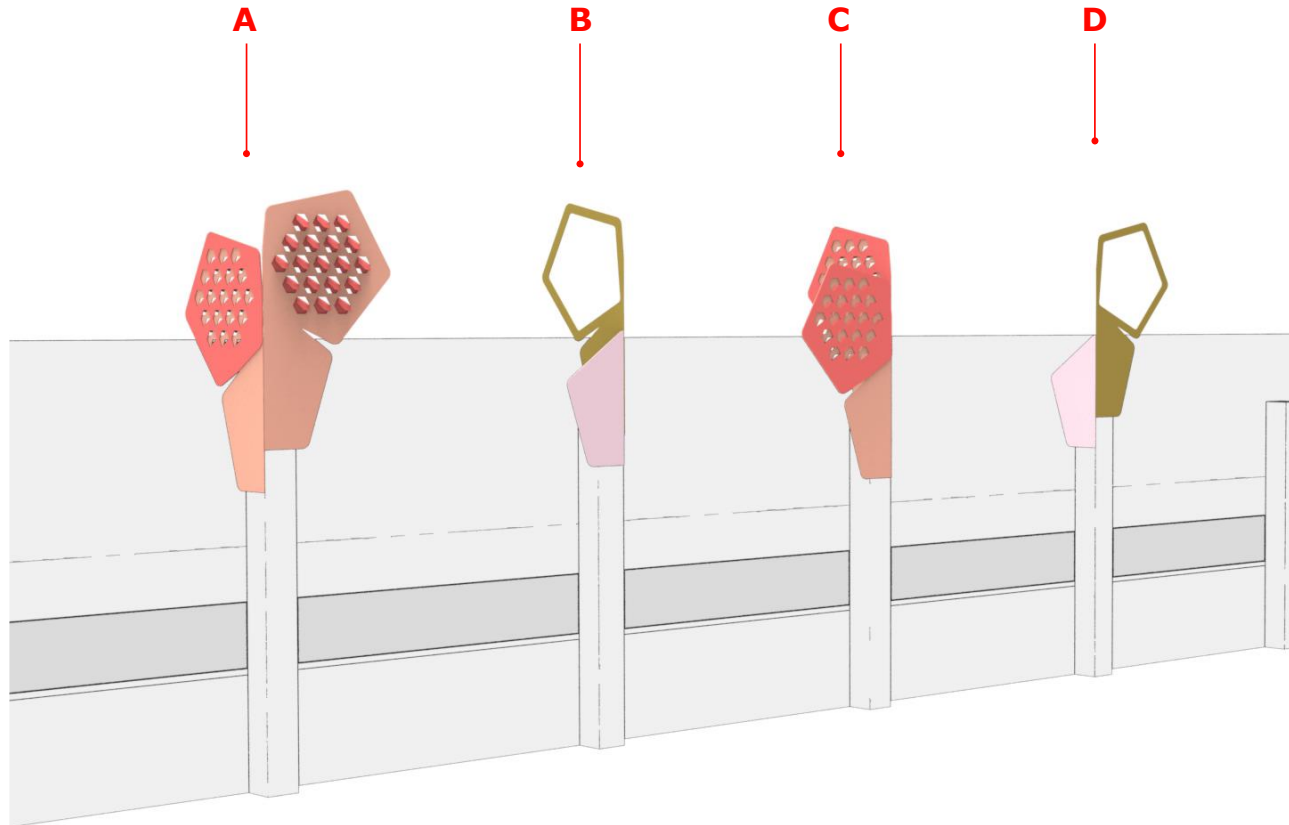


1. River Wandle
2. Wellcome Trust Medical Glassware
3. Consumer Packaging Design (pharmaceutical)
4. Surface Manipulation based on paper folding
5. Calumny

Dormay Street

Artwork Layout

Colour update - July 2018



KING GEORGE'S PARK HERITAGE NARRATIVE

Recreation to Industry: Society in Transition.

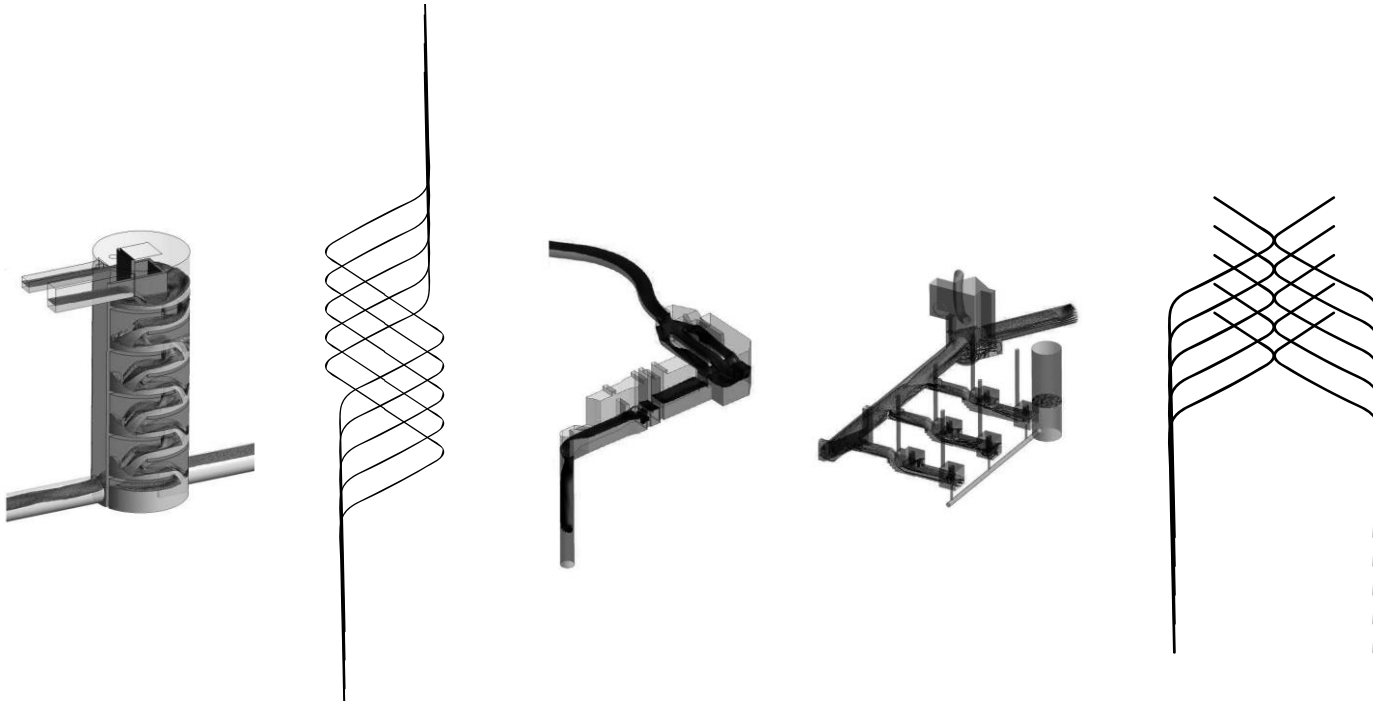
The emergence of public social policies covering housing, welfare, health and well-being formed part of a 20th century modernist vision of urbanism. The history of the Park illustrates this significant shift in the responsibility for social well-being of the urban workforce and illustrates the post-First World War political commitment to resolving London's housing challenge.

Artist: Yemi Awosile, *Domestic Motif*

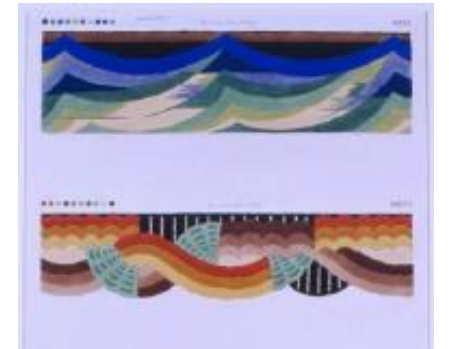
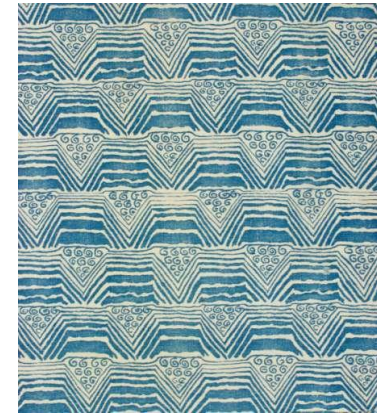


Design Inspiration

Computational Fluid Dynamics (CFD) Modelling of Interception Sites and Shafts

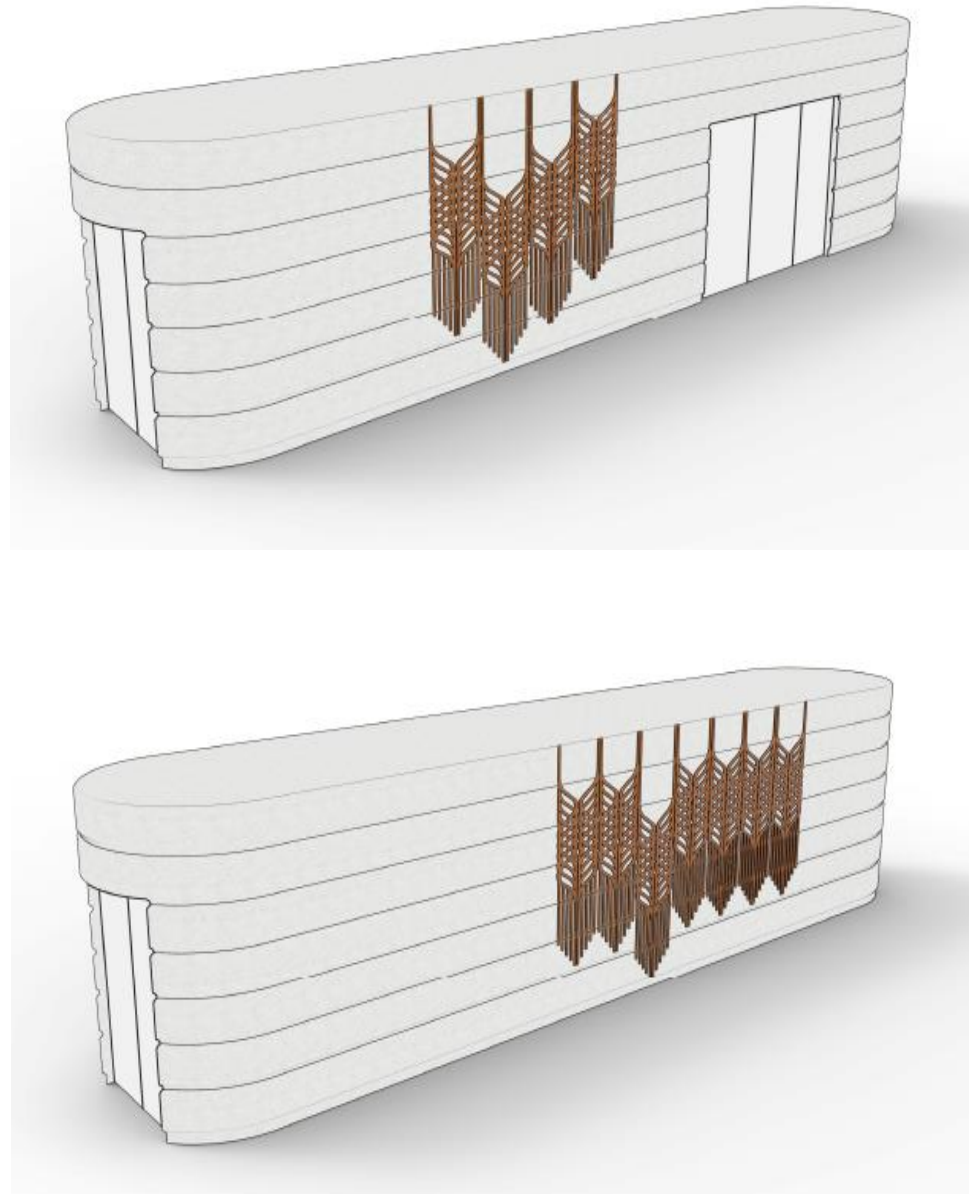


The design of the artwork looks specifically at the west London sites. It is informed by the spiral/cross patterns and the sense of motion created by the water flow as it passed through the tunnels



Fabric samples from the Museum of Domestic Architecture

King George's Park





1 View of Artwork - West Side
000016 Photomontage NOT TO SCALE



Signature Ventilation Columns

Principle:

- As companies Tideway and Thames Water have **no** interest in “branding” the sites.
- However, we do need to comply with our vision:

“Site designs shall be of high quality and provide value. They shall respect each site’s individual location and setting, while recognising the contribution of all sites to providing a cleaner, healthier River Thames.

Designs shall recognise the importance and quality of the engineering infrastructure below-ground...”
- Therefore we do want *some* continuity across the project – particularly at Public Realm sites and text and information will refer to the projects ie **“Thames Tideway Tunnel”** rather than the companies involved.
- Given the longevity of the structures, we are aiming for a timeless, durable approach.

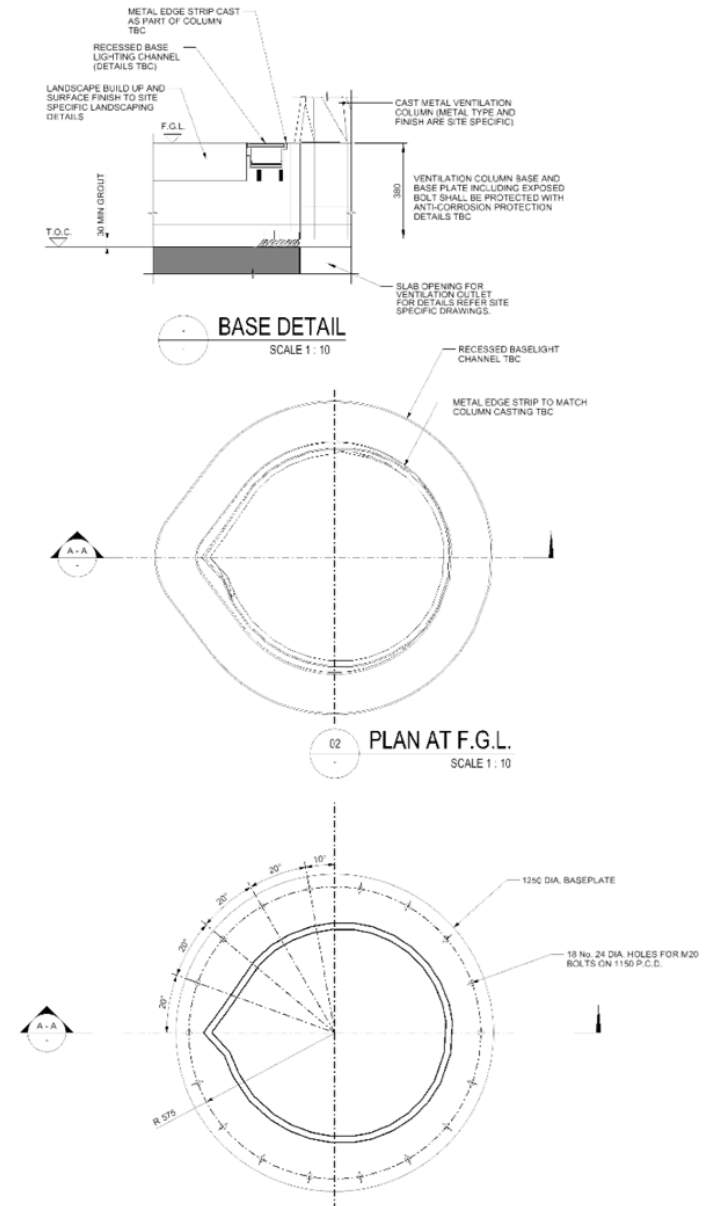
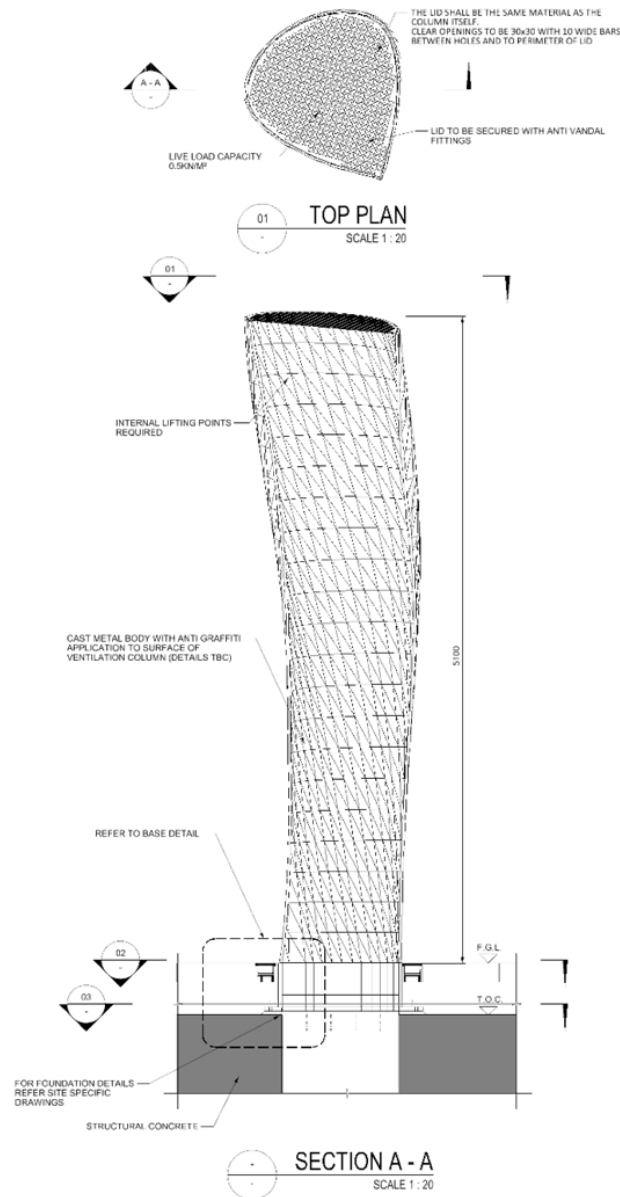
Signature Ventilation Column (SVC) DCO Requirements

Design Principles

Vision: developing a signature across the sites that recognises the collective importance of the project and the sites to the river.

FNCC.04: The 'signature' design shall be used for all ventilation columns serving the shaft, except where stated otherwise in site-specific principles. The ventilation columns shall stand a maximum 6.5m high and have a minimum proportion of 1:5 (girth to height). Multiples of the signature design shall be used to achieve the cross-sectional areas required for ventilation.

Site Specific Requirements



Signature Ventilation Column



Lorem ipsum dolor sit amet, consectetur

Polished Strip and Text Size Study

- Preferred Strip Width: 85mm
- Text Size: 60mm (sentence case)
- Font: Doves
- Characters: Limited to 150 (to be legible)

The Significance of the Doves Font:

The Doves Press was founded in 1900 at Hammersmith. The font was created as a reinterpretation of hand drawn manuscript fonts that preceded the creation of print. A bitter feud between the two partners of the press, lead to the throwing of their unique metal type, undercover of darkness into the River Thames.

In 2015, after searching the riverbed of the Thames near Hammersmith Bridge with help from the PLA, Robert Green, managed to recover 150 pieces of the original type, which helped him to recreate the font and develop a digital version.

Signature Ventilation Column Poetry Commission

Commission Selection Panel:

- Judith Palmer, Director of the Poetry Society
- Dr Karlien van den Beukel, Course Director BA (Hons) Creative Writing, London South Bank University
- Representatives from Tideway

Poet: Dorothea Smartt

Smartt is a Londoner with an international reputation as an established poet and a respected literary activist and live artist. Her work has received critical acclaim in both the UK and USA. She became a fellow of the Royal Society of Literature in 2019.

Smartt is known for drawing links between the past and the present, often focusing on people.

The selection panel were impressed and inspired by the detail of Smartt's proposal and the strength of her previous work and its relevance to the commission themes. They were excited by the idea that her poems would be about human stories, offering 'snippets of London life' across the centuries.



Commission Development

- The theme for this project-wide commission is London's Lost Rivers. The Lost Rivers, as London's natural drainage system, were the basis for Bazalgette's original sewer network and many are still the sewers of the capital. Fifty tributaries flow into the Thames, twelve along the route of the tunnel, and much has been written in response to their evocative and chequered history.
- Smartt's Approach:
"I hope to add a human and experiential dimension with some of my poems for the ventilation columns. I'll be looking to explore ways of drawing threads across social history, through the lives of people, events, or significant buildings ... reflecting and honouring well-known facts and features, as well as the lesser-known, marginalised or hidden past."
- Research included archival research in London libraries (such as the Southwark History Library and Archive, London Met, Wellcome, Museum of Docklands etc.) and visiting museums with an active approach to contacting and talking to both everyday people and those with expertise on the history of the lost rivers, as well as visiting the Lost Rivers themselves. Her aim was to explore ways of covering a scope of centuries in the poems.
- Each column has a stand alone poem, which forms part of the collection Hidden Rivers, Hidden Times – a series of site-specific poems relating to the Lost Rivers, about human stories, offering 'snippets' of London life across the centuries.

Signature Ventilation Column Poetry Commission: King George's Park

On watchful Wandle walks, Corporal Foster weaves alongside the river, an engine working watermills for earthenware, candles, and beer.

On watchful Wandle walks, Corporal Foster weaves alongside the river, an engine working watermills for earthenware, candles, and beer.

(135 characters)

References Corporal Edward Foster, a Wandsworth-born WWI hero, who was awarded the Victoria Cross and was also honoured by having the road crossing King George's Park named after him (Foster's Way).

Corporal Foster VC came from working class roots and, after the war, became a dustman. The poem also references local industry around the Wandle, including the Ram Brewery.

[20th Century WW1]

Poems from *Hidden Rivers, Hidden Times*

On watchful Wandle walks, Corporal Foster weaves alongside the river, an engine working watermills for earthenware, candles, and beer.

The furious Fleet flows red with Roman blood, Boudica battles bravely.

Sloane's Jamaican fortune, rooted in African trauma, blossoms a physic garden. Palms, tropical ferns, the ancient olive tree struggle to find peace.

Rearing, wings dip landing on river-stairs worn from work and weather. The Heron, soul of a drowned Lighterman, keeps his oath and dwells on the Thames.

In pleasure's garden brides to be seek to be seen. Beneficial unions set the sun on virgin days, when a husband was a woman's right to be in the world.

Local law and land lords filled nooses, lent Neckinger its name: *those French monks turned marsh into ripe farmlands, built mill, dock, and gibbet.*

For more information:

<https://www.tideway.london/benefits/art-on-the-tideway/>



QUESTIONS?



Tideway

RECONNECTING LONDON WITH THE RIVER THAMES

#SuperSewer

www.tideway.london