

DEPTFORD CHURCH STREET & GREENWICH PUMPING STATION

VIRTUAL COMMUNITY LIAISON WORKING GROUP



Tideway



Date: 4 August 2020

Chair: Councillor Mehboob Khan

STAFF



Tideway

- Andy Sefton, Senior Project Manager Greenwich
- Allen Summerskill - Stakeholder and Consents Manager – East
- Darren Kehoe, Project Manager Greenwich
- Anil Dhillon, Project Manager Deptford
- Rebecca Major, Communications Lead

CVB – main works contractor

- Martin Griffiths – Community Relations Manager
- BaDan – Deptford Church Street, Site Agent
- Robert Margariti-Smith, Greenwich, Tunnel & Site Manager
- Philippe Carlier – Greenwich, Tunnel Agent
- Rebecca Oyibo – Community Relations Officer

AGENDA



Deptford Update

- Works update
- Looking ahead
- Noise and vibration

Greenwich Update

- Works update
- Looking ahead
- Noise and vibration

Legacy

DEPTFORD CHURCH STREET



Tideway



WHAT WE'RE BUILDING



DEPTFORD WORKS UPDATE



Shaft

- Base slab - poured on 12/09/2019
- Portals - reinforcement installed and first lift poured

Interception Chamber (Phase 1)

- Excavation completed
- Base slab completed
- Internal walls ongoing

SHAFT



Tideway

3D experience

[https://kuula.co/
post/7DDN3](https://kuula.co/post/7DDN3)



INTERCEPTION CHAMBER



3D experience
<https://kuula.co/post/7DDNd>



DEPTFORD LOOK AHEAD



	July	August	September	October	November	December	January	February
CSO Internal								
Piling works								
Shaft Vortex								
Slipform					Night Shift	3 weeks		
Shaft Vortex Generator and culvert								

CSO internals, walls, secant piling – standard working hours (with some extended hours for concrete pours) - 08:00-18:00 Mon to Fri, 08:00-13:00 Sat until end of 2020

Shaft Vortex Tube Installation extended working hours up to 22:00 Mon to Fri, up to 17:00 Sat until end of Sept 2020

Slipform Shaft Secondary lining Start in Oct 2020 and to be completed by end of 2020.

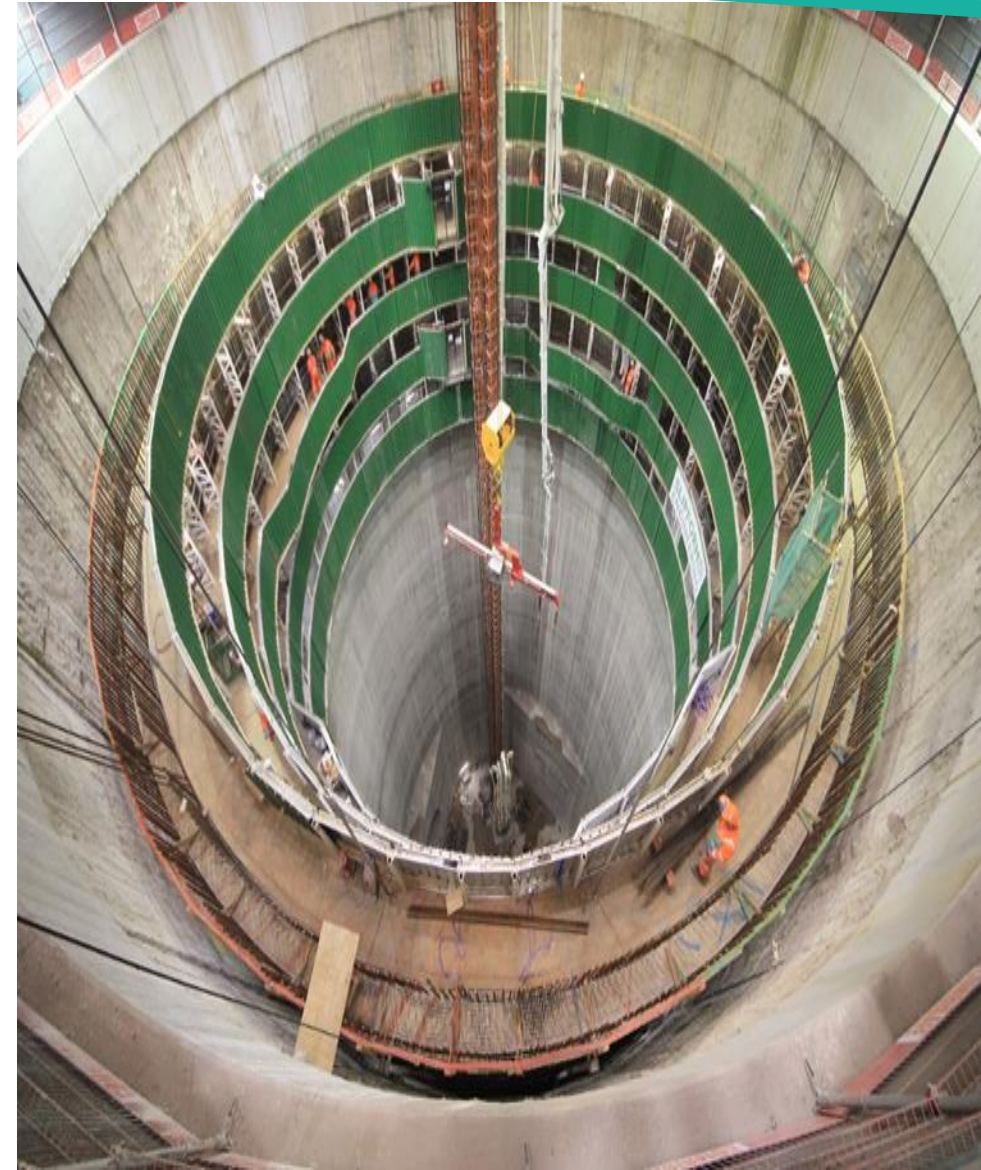
Start end of Sept:

Mobilisation 8AM to 8PM with extended hours up to 22:00

Start end of October for 3 weeks: 24/5 and Sat 17:00 (For Quality and Health and Safety purposes – Less Joint, less risk of leakage)

Demobilisation in December: 8AM to 8PM with extended hours up to 22:00

SLIPFORM CONSTRUCTION



MITIGATION MEASURES DURING NIGHT SHIFTS AS PER CONSENTED SECTION 61 WITH LOCAL AUTHORITIES



Tideway

- Most of the works are happening inside the Shaft this will screen any noises
- All concrete wagons (approx. 3 to 4 per hours) coming to site at night will be noise screened using sound barriers during concrete discharge
- Concrete pump will be also noise screened using sound barriers during concrete discharge
- All Lights will be orientated towards the site
- There should be no other planned delivery others than concrete wagons
- The slipform rig is powered by electric
- Any operating static plant will be screened for noise (ie: fan etc..)
- All operatives will be briefed not to leave site until the end of the shift
- Live noise monitoring

GREENWICH PUMPING STATION



Tideway



GREENWICH WORKS UPDATE



Main Site & Shaft

- Pre TBM lowering shaft and adit preparation.
- Modification of the lowering system after not being able to deliver the TBM in a single piece due to Covid-19 pandemic. Size of support team to facilitate the move rendered it not possible with social distancing measures
- Dismantle the TBM into 11 components at Victoria Deep, transport and lowered down the shaft for re-assembly.
- Site general installation for works ahead of the tunnelling phase
- CSO Jet Grouting works completed

Phoenix Wharf

- Continue to install Slurry Treatment Plant (STP) and commissioning has commenced
- The STP will be a water and soil treatment system formed of various buildings and tanks for treating the excavated material that is excavated during tunnelling

TBM SPLITTING WORKS UP AT VICTORIA DEEP



SHIELD COMPONENTS READY FOR TRANSPORT



Tideway



PRIOR TO LOWERING – SHAFT AND ADIT PREPARATION

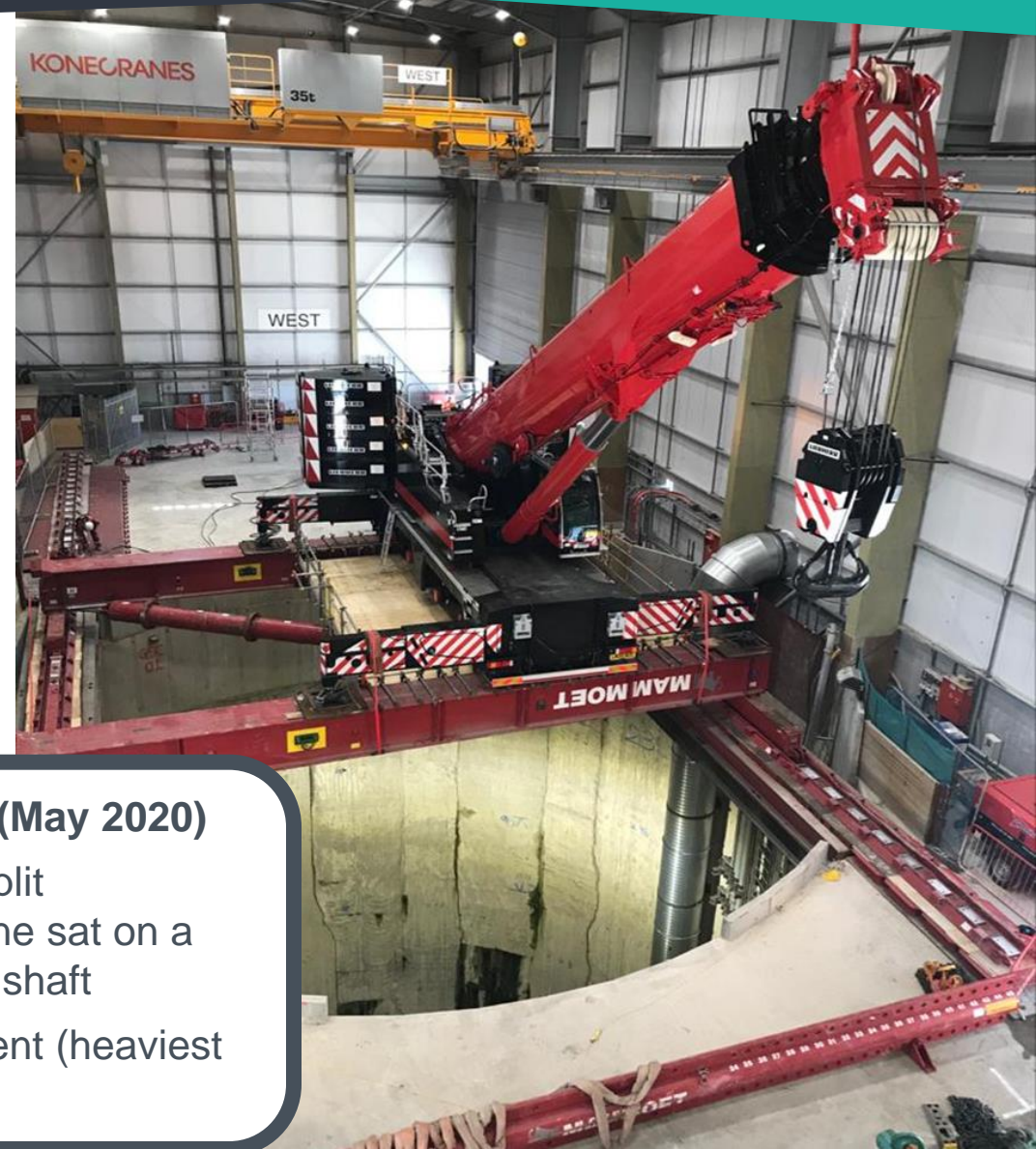
- Installation in the shotcrete adit (24m of tunnel excavated manually) of TBM launch seals, skidding rails required for the launch of the TBM
- Installation of the working deck at the bottom of the shaft
- In parallel, a bespoke lifting system was being installed on the top of the shaft to lower the TBM components



TBM LOWERING SYSTEM

Strand Jacking (Jan 2020)

- To lower the TBM as a complete unit (prior to Covid-19)
- Good to lift 520t as a single lift



Bespoke lifting system (May 2020)

- To lower the TBM as split components - 350t crane sat on a skidding table over the shaft
- Able to lift 70t component (heaviest section of TBM)

Delivery and Lowering of the TBM

- The TBM was split into 11 elements , 9 loads on standard HGV delivery, 2 loads in convoy over 1 night transfer, through Greenwich due to the abnormal load aspect (over 6.4m diameter)

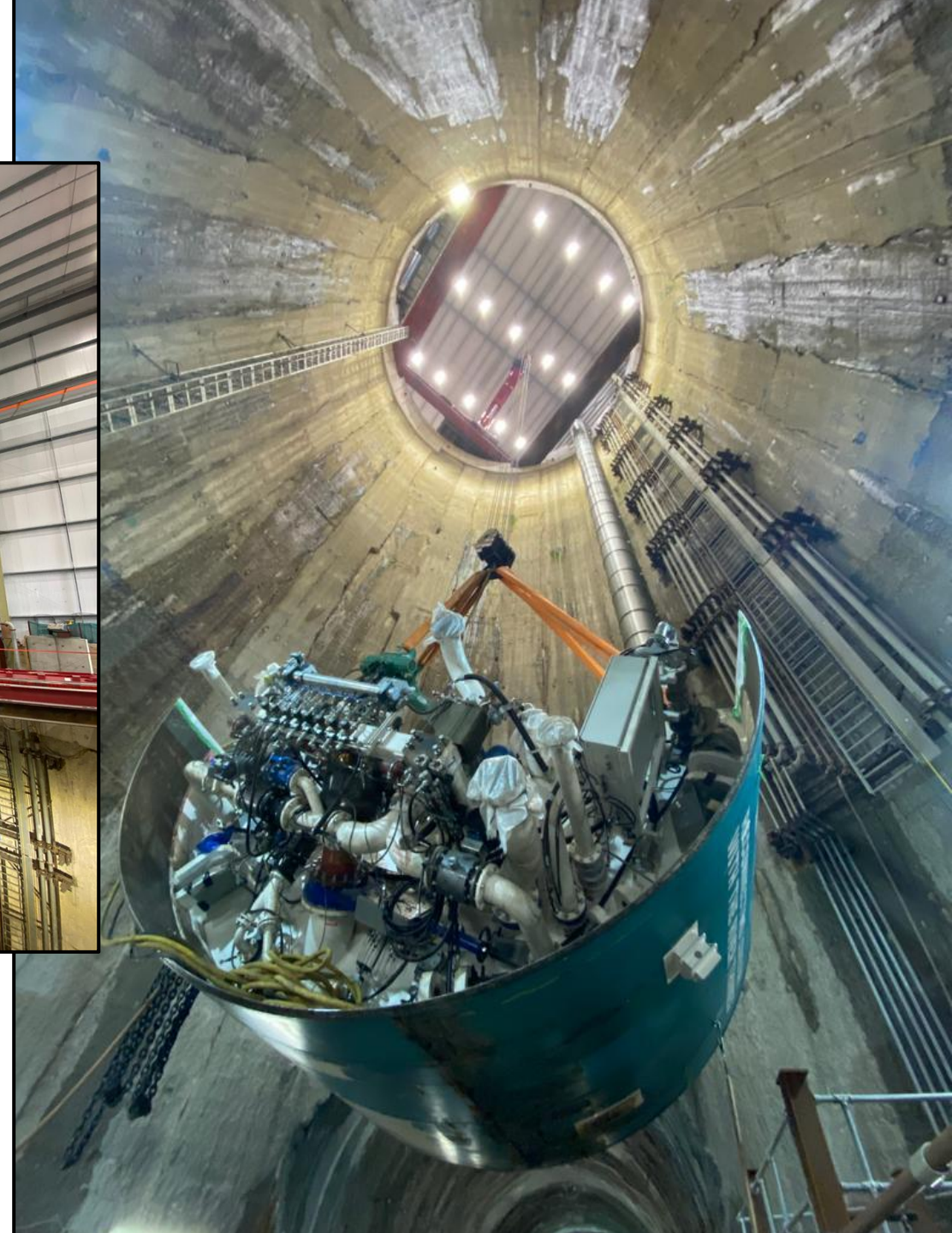
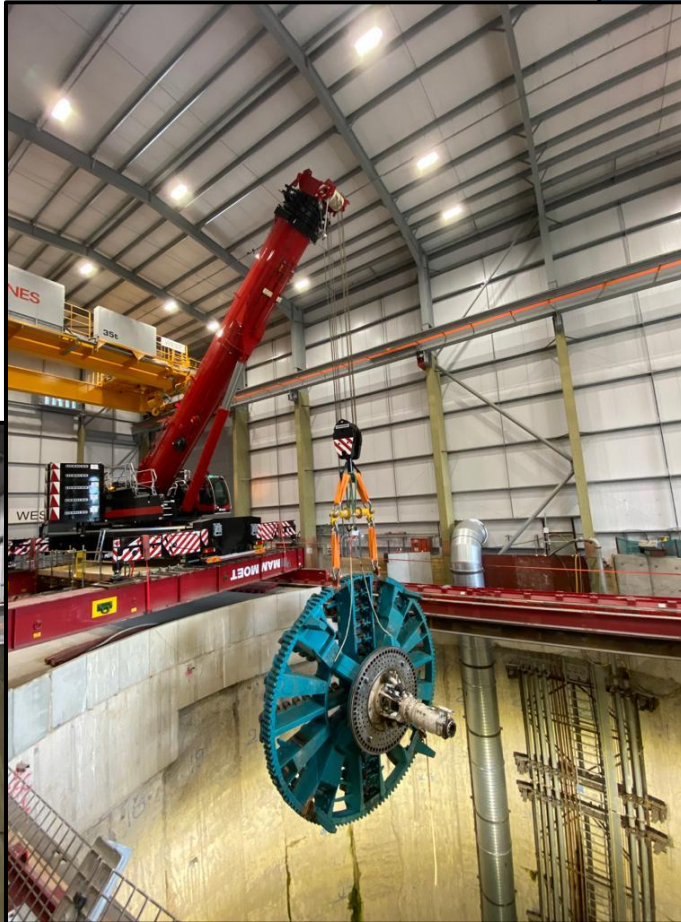


Crossing of the A102, the night of the 14th July

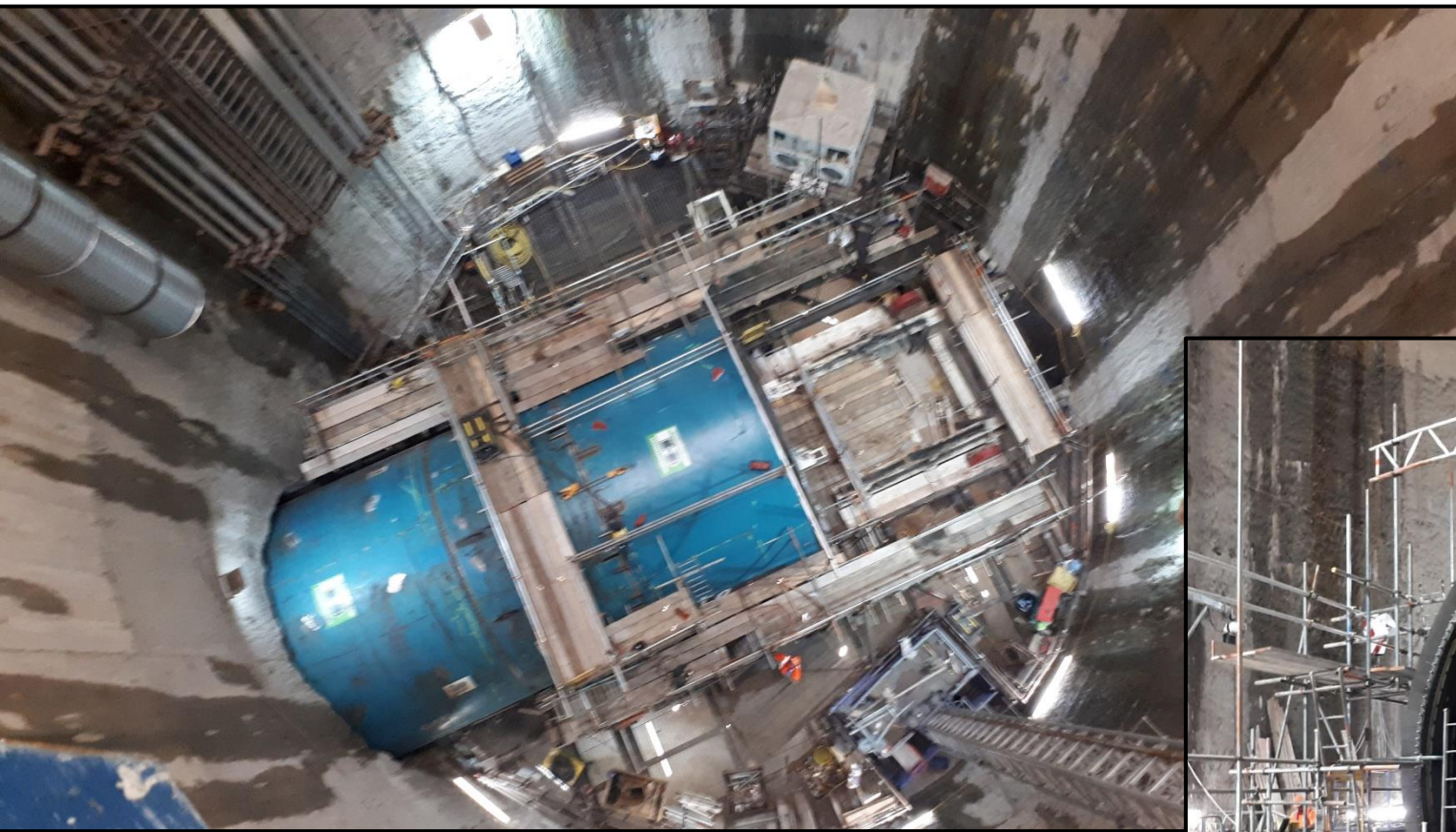


LOWERING OF TBM ANNIE

The TBM was split into 11 elements , 9 loads on standard HGV delivery, 2 loads in convoy over 1 night transfer through Greenwich due to the abnormal load aspect (over 6.4m diameter)



SHAFT WORKS

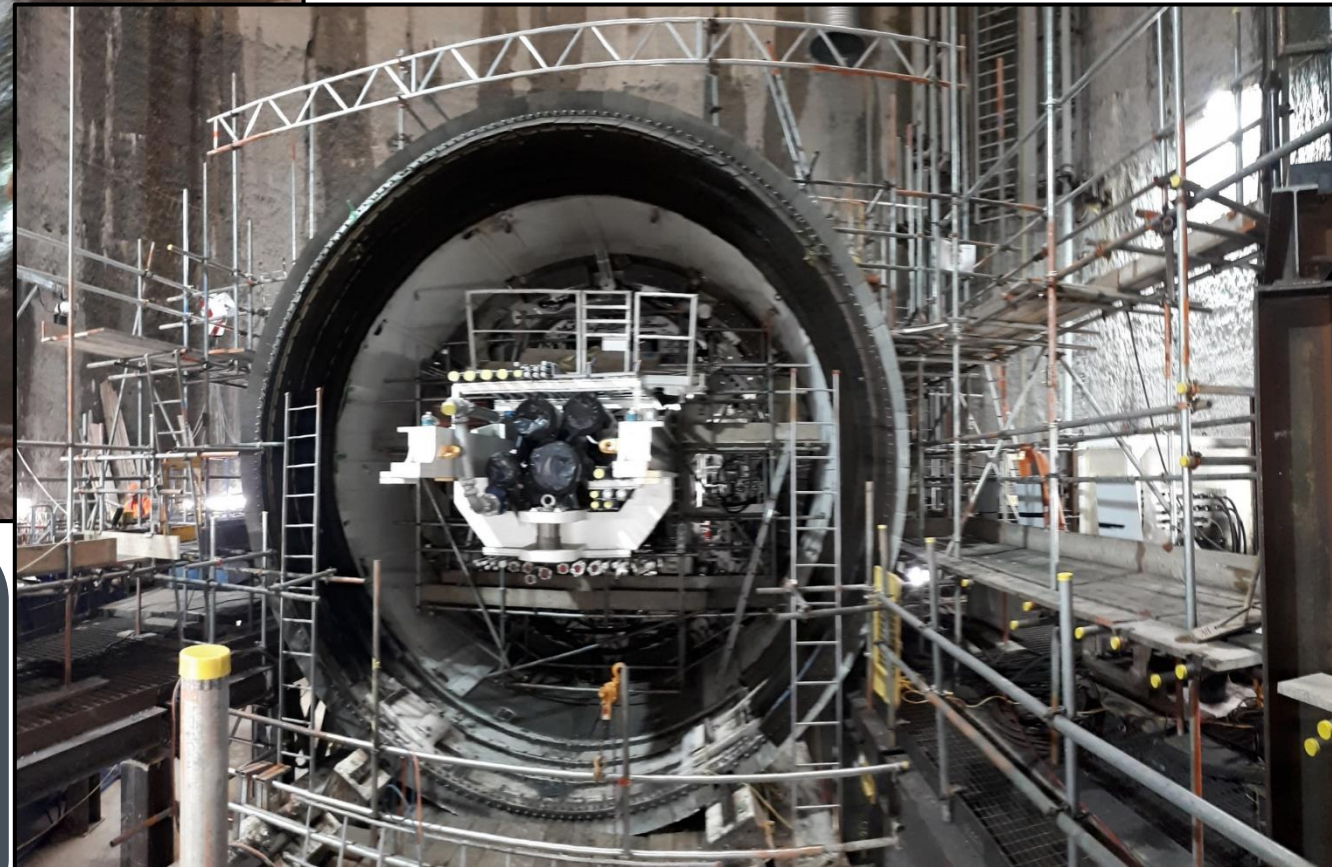


TBM Rebuild

- The 11 TBM components have been reassembled in the shaft over the last 6 weeks
- Works have been undertaken by specialists from Herrenknecht (TBM Manufacturer) with CVB support

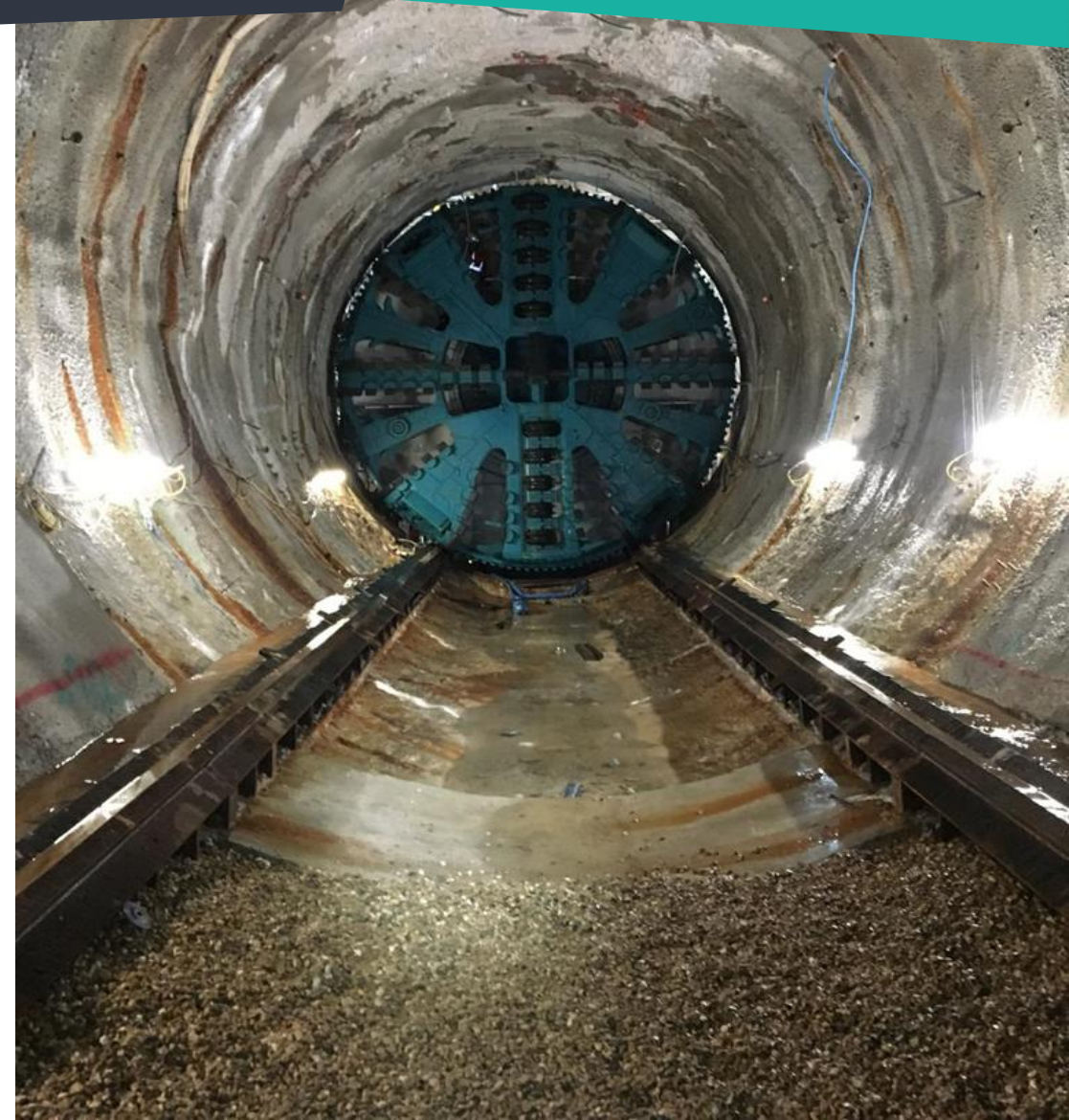
Continuous working

- Welding works – 9 days of 24hr welding in the shaft on the TBM shield. Need to retain heat in the weld. Welding 50mm rolled steel plate
- Doors closed from 18:00 to 08:00



THE TBM RE-ASSEMBLY AT THE BOTTOM OF THE SHAFT

- The TBM shield has been re-built and will now be pushed through the adit to permit work to be completed ahead of Ready to Bore
- The machine will be jacked up the skidding rails
- Behind the machine, steel rings will be installed in the tunnel which will be concreted in place to provide the thrust block for the launch of the machine



PHOENIX WHARF

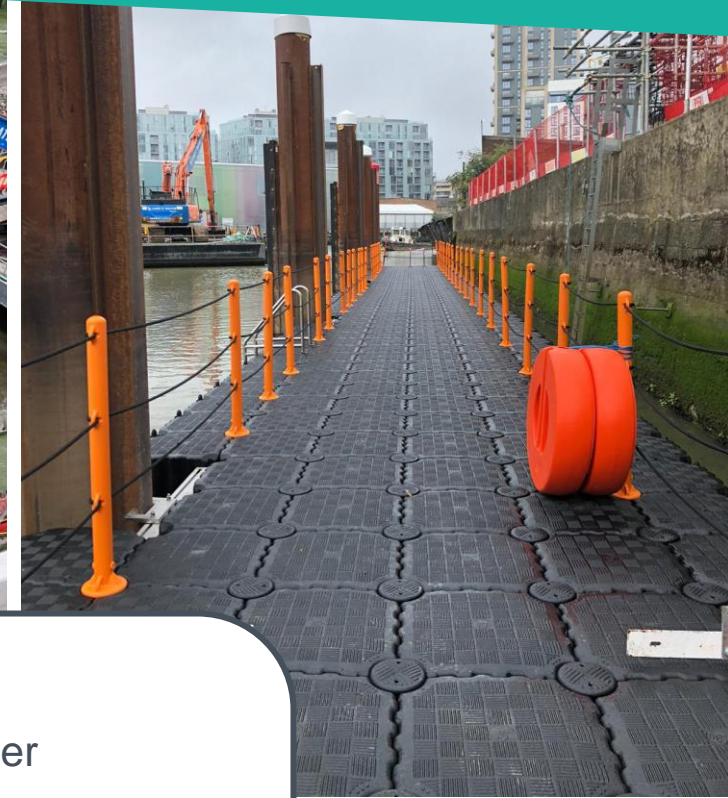
Deptford Creek



SLURRY TREATMENT PLANT



Deptford Creek Dredging For Mucking Away by River

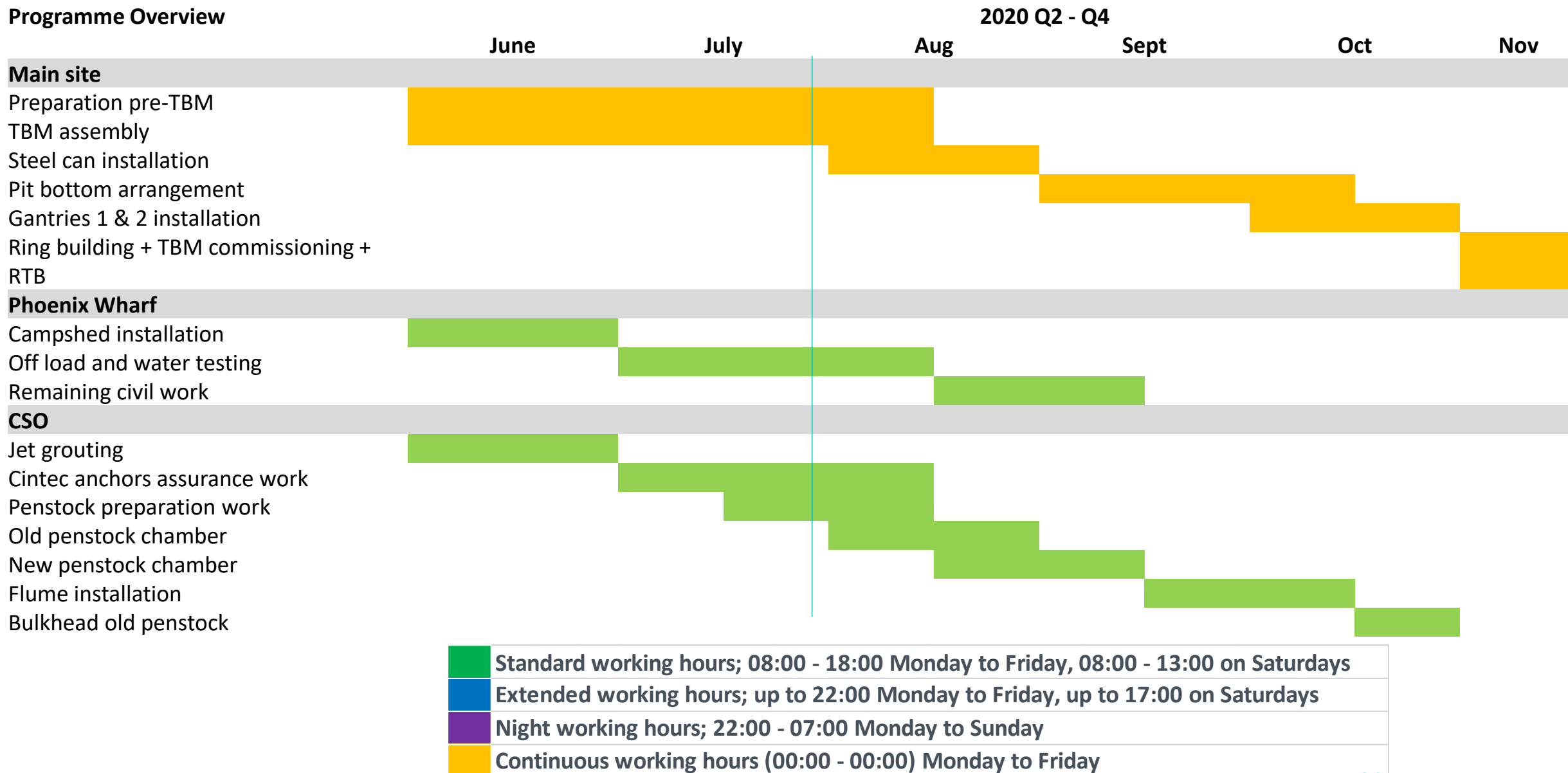


More by River

- Target 30% muck away by river
- 500t material per barge
- Up to 8 barges per week
- Taking 240 muck away vehicles per week off Greenwich roads
- Camp shed used to berth a barge on when the tide is out

GREENWICH LOOK AHEAD

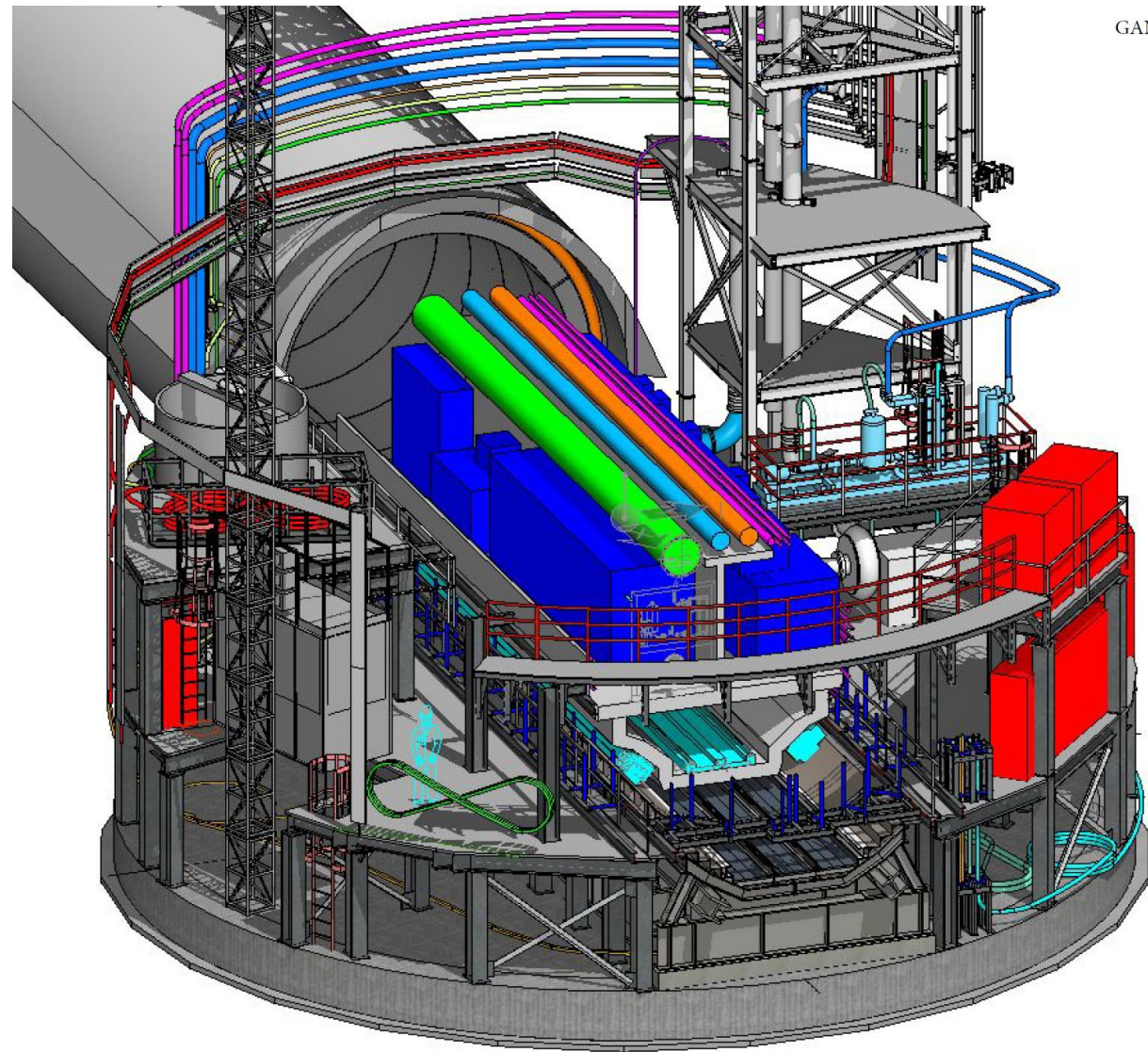
Programme Overview



1 hour allowed before & after for mobilization/demobilisation

Today through to Ready to Bore

- Steel rings will be built behind the TBM and concreted in place. Each ring weighs up to 20t and will be built on surface prior to lowering into the shaft.
- The TBM will require 2 gantries (of 9) installing prior to launch
- The pit bottom will also need to be completely reconfigured from TBM build to TBM mining phase. This will include all services (slurry, electricity, water, air, rings etc.) required to supply the TBM on its journey to CHAWF.



NORMAN ROAD CLOSURE FOR VEHICLE HOLDING AREAS



- Part of Norman Road will be closed for public vehicle use, from Monday 23 September, for around 18 months
- This is to support works at the Tideway and Norman House development site
- Closure on north and southbound lanes between Greenwich High Road and north of Lovibond Lane (Access will remain available from Creek Road)
- Tideway VHA will be relocated
- Access will always be available to Bellville House from direction of Creek Road.
- During working hours, Bellville House exiting vehicles will be escorted by Tideway traffic marshals (heading north towards Creek Road)
- Cyclist and pedestrians not affected – cyclists diverted though Lovibond Lane
- Lovibond Lane will be two-way for traffic, allowing vehicles to enter and leave using Waller Way (via Greenwich High Road)
- Additional traffic marshals on Lovibond Lane during the opening and closing hours of the Bright Horizons nursery
- Booked rubbish collections will be escorted via Norman Road
- Traffic management changes will happen on Sunday 22 September (when traffic flows are lowest)

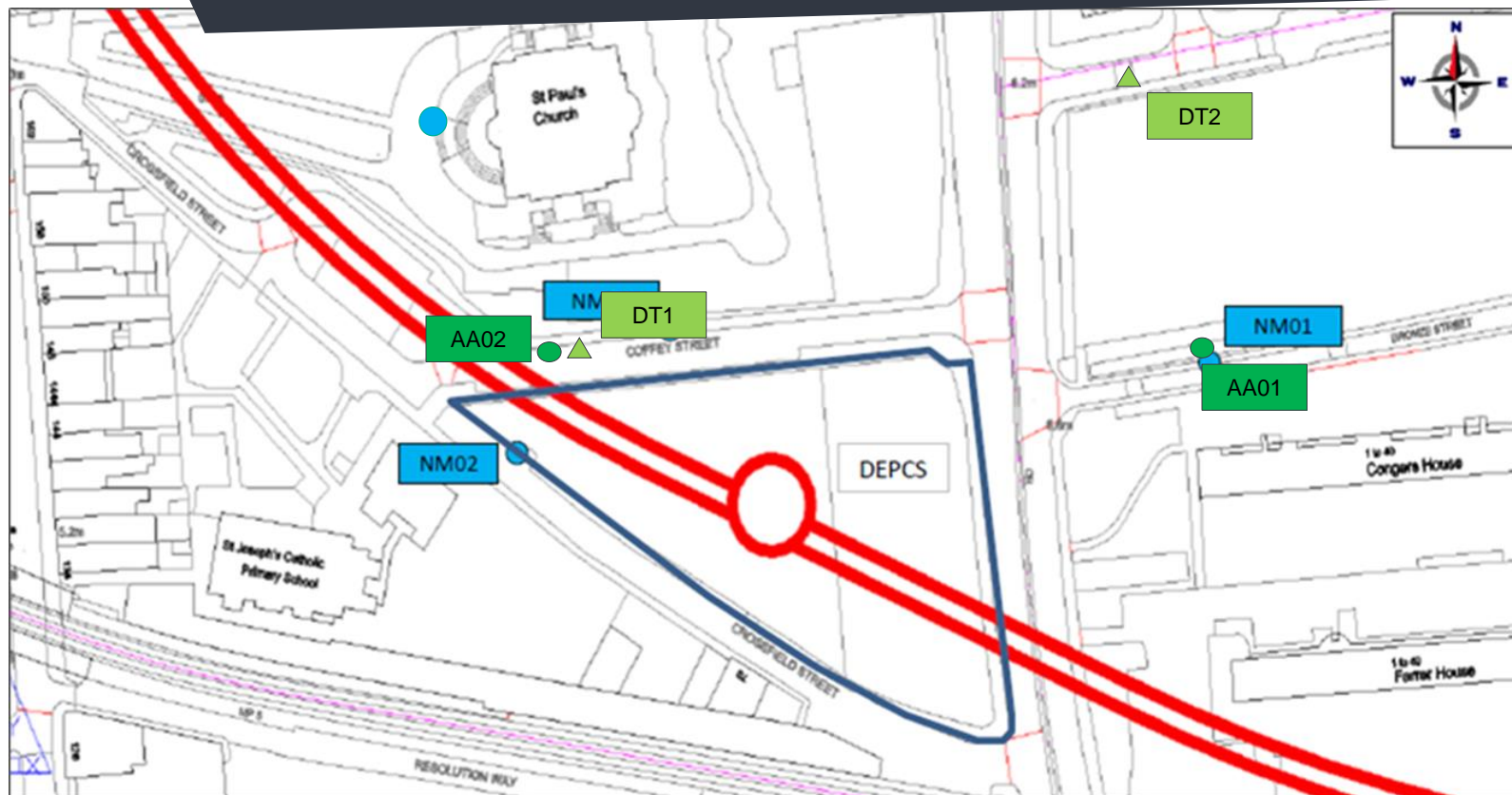
NOISE AND AIR POLLUTION



Tideway



DEPCS NOISE AND AIR QUALITY



Monitoring position key:

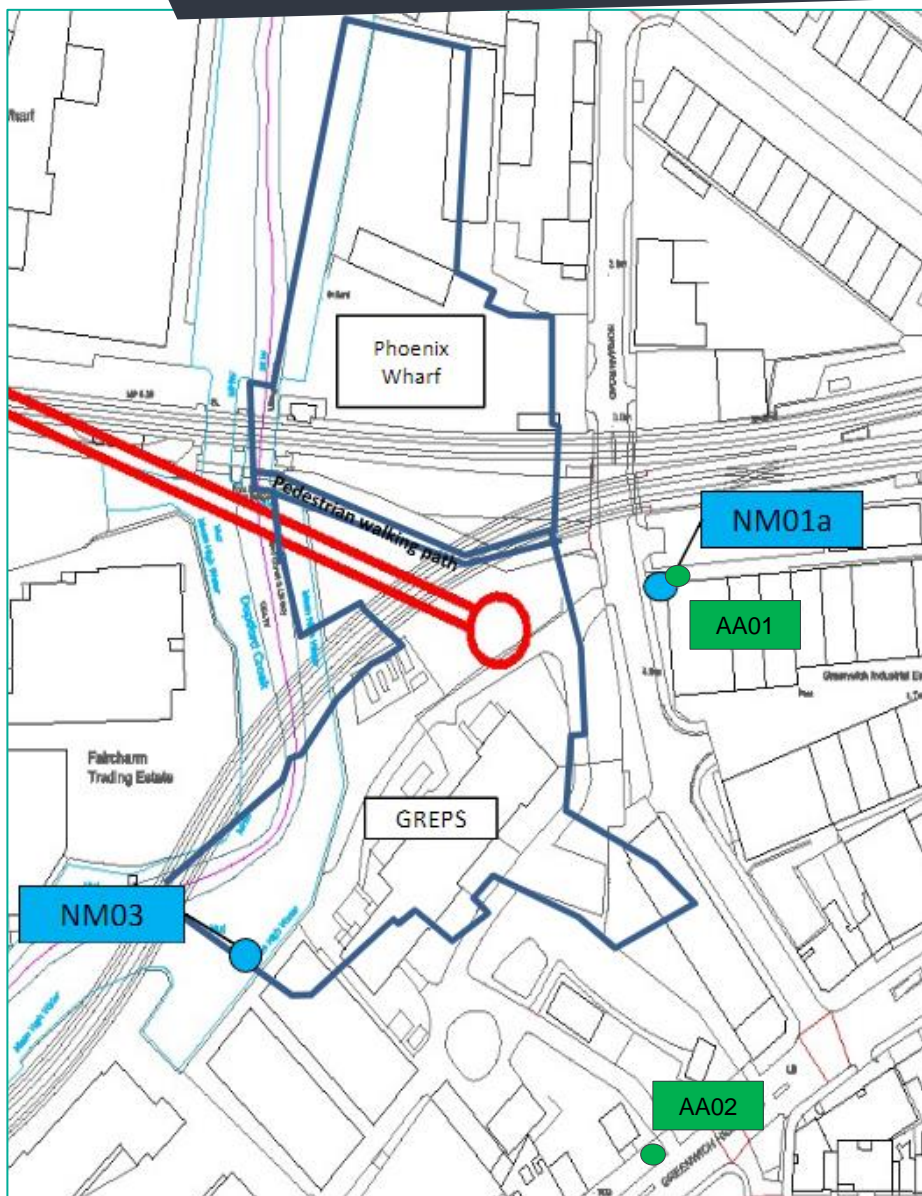
- Noise Monitoring Position
- Dust Monitoring Position
- ▲ Diffusion Tube position

Month	Noise	Air Quality
	S61 triggers	24h PM ₁₀ triggers
December 19	0	0
January 20	0	0
February 20	0	0
March 20	0	0
April 20	0	0
May 20	0	0
June 20	0	0

Air Quality and Noise data notes

No air quality or noise triggers attributed to CVB operations over the period.

GREPS Noise and Air Quality



Monitoring position key:

- Noise Monitoring Position
- Dust Monitoring Position

Air Quality and Noise data notes

NM03 removed in March 2020 due to a change in local environmental conditions resulting in ambient noise being above trigger levels for this monitor. No significant ongoing works are planned for this side of the site.

No air quality or noise triggers attributed to CVB operations over the period.

	Noise	Air Quality
Month	S61 triggers	24h PM ₁₀ triggers
December 19	0	0
January 20	0	0
February 20	0	0
March 20	0	0
April 20	0	0
May 20	0	0
June 20	0	0

LEGACY



Tideway



LEGACY

CHARITY AND VOLUNTEERING



Five Tideway teams took part in Race The Thames, an indoor rowing challenge, to raise funds for charity partner London Youth Rowing.



Tideway has 167 Trained Mental Health First Aiders
Tideway East supports MATES IN MIND, a charity that aims to raise awareness of mental health and improve well-being in construction and related industries across the UK

1. SINGLE HOMELESS PROJECT

2. DRIVE FORWARD FOUNDATION



3. SOUTH LONDON CARES



LEGACY

SCIENCE TECHNOLOGY ENGINEERING AND MATHS



FIRST EVER SOFTWARE ENGINEERING PLACEMENT

FIRST SOFTWARE ENGINEERING PLACEMENT FROM (CYT) CONSTRUCTION YOUTH TRUST

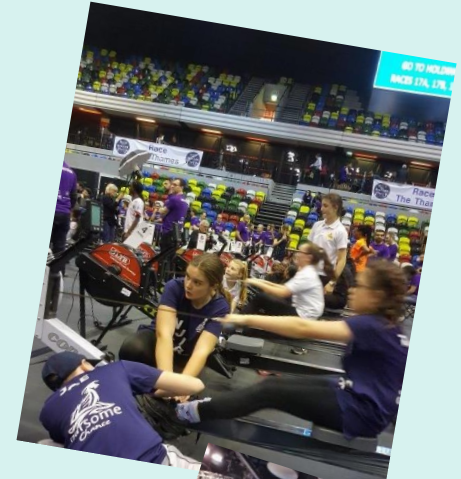
SUPPORTED THE LB SOUTHWARK CAREERS FAIR

STEM BOAT TOUR WITH 4 SCHOOLS

OVERSITE FUNCTION FOR THE LONDON DESIGN & ENGINEERING UNIVERSITY TECHNICAL COLLEGE

JUDGED CAREER READY ANNUAL NATIONAL STEM STUDENT OF THE YEAR AWARDS

THREE STEM WORK EXPERIENCE PLACEMENTS



LEGACY THE NEXT GENERATION



CELEBRATING INTERNATIONAL WOMEN'S DAY

Tideway East apprentices visited the
Institute of Civil Engineers (ICE)
to celebrate their contribution to the project as
part of National Apprenticeship Week



BELIEVING IN OUR APPRENTICES



Tideway East supported a panel
discussions with 120 colleagues
and guests to explore the
changing culture for women in
the construction industry.

London Youth Rowing (LYR)
ACTIVE ROW aims to get children active
through indoor and outdoor rowing.



STEM BOAT TOUR
BRINGING CLASSROOM TEACHING TO LIFE

LEGACY

COMMUNITY INVESTMENT



Our commitment to the communities we are working in is to deliver our work with care and consideration and leave a lasting, positive legacy for London.

Staff working on the Tideway project volunteer their time to support good causes across London, using their professional skills where they can so that we can have an even greater benefit for our charity partners.



Contact US

- If you do have any questions or enquiries, please contact the Tideway Helpdesk:
- Telephone: **0800 030 80 80**
- Email: **Helpdesk@Tideway.London**

FURTHER HELP AND ADVICE



Who do I go to for advice?

- Independent Advisory Service (IAS) Helpline for independent advice:

0800 917 8845 or info@tidewayias.co.uk

- Tideway's Mitigation and Compensation Lead, **Louise Walsh**, for personal assistance and advice: via Tideway Helpdesk **08000 30 80 80** or helpdesk@tideway.london or direct **07971 077165** or **louise.walsh@tideway.london**

How do I submit my claim?

- Louise can submit your claim to the Independent Compensation Panel (ICP) on your behalf, or
- You can submit your claim direct to the ICP: **admin@tidewayicp.london**
- The IAS can send you a claim form, or you can download a claim form from the Tideway website: www.tideway.london/help-advice/compensation-information/Independent-Compensation-Panel



THANK YOU



Tideway

RECONNECTING LONDON WITH THE RIVER THAMES

#SuperSewer

www.tideway.london