

PUTNEY EMBANKMENT FORESHORE & BARN ELMS

Community Liaison Working Group

Thursday 12 November 2020



Tideway



COVID-19 UPDATE

Chris North MSc CEng MICE
Section Manager

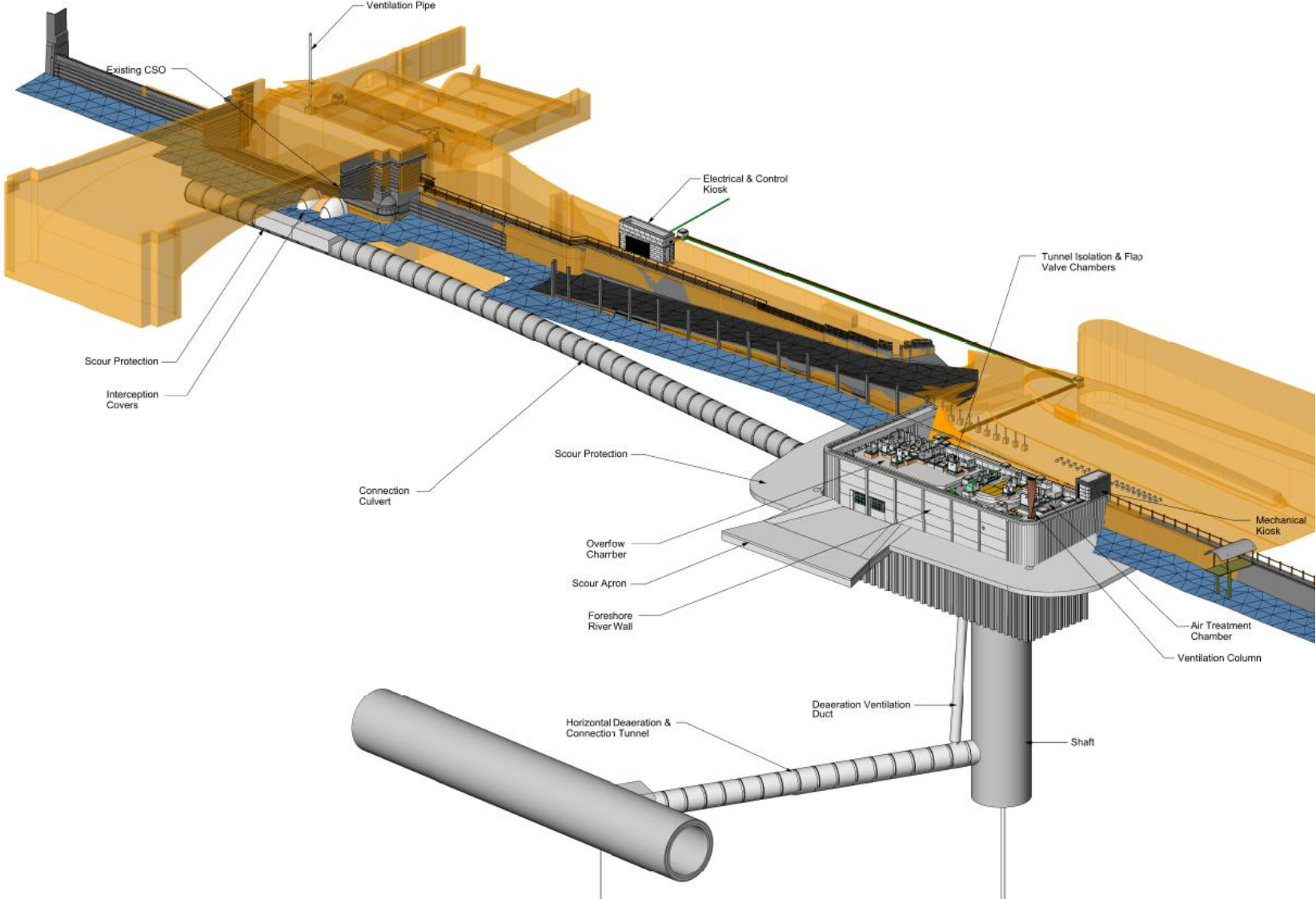
COVID Secure Sites



PUTNEY EMBANKMENT FORESHORE

Chris North MSc CEng MICE
Section Manager

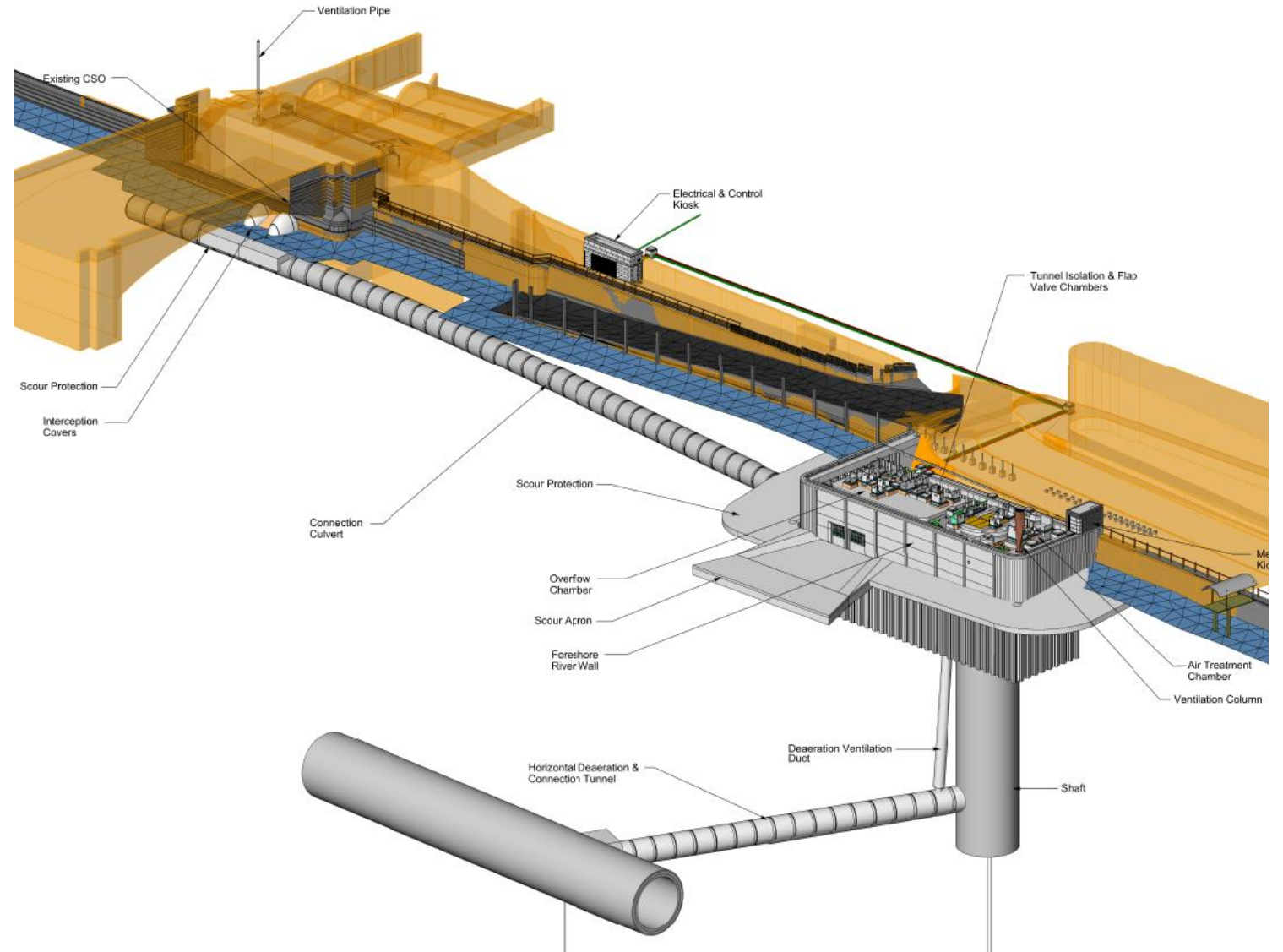
Putney Overview



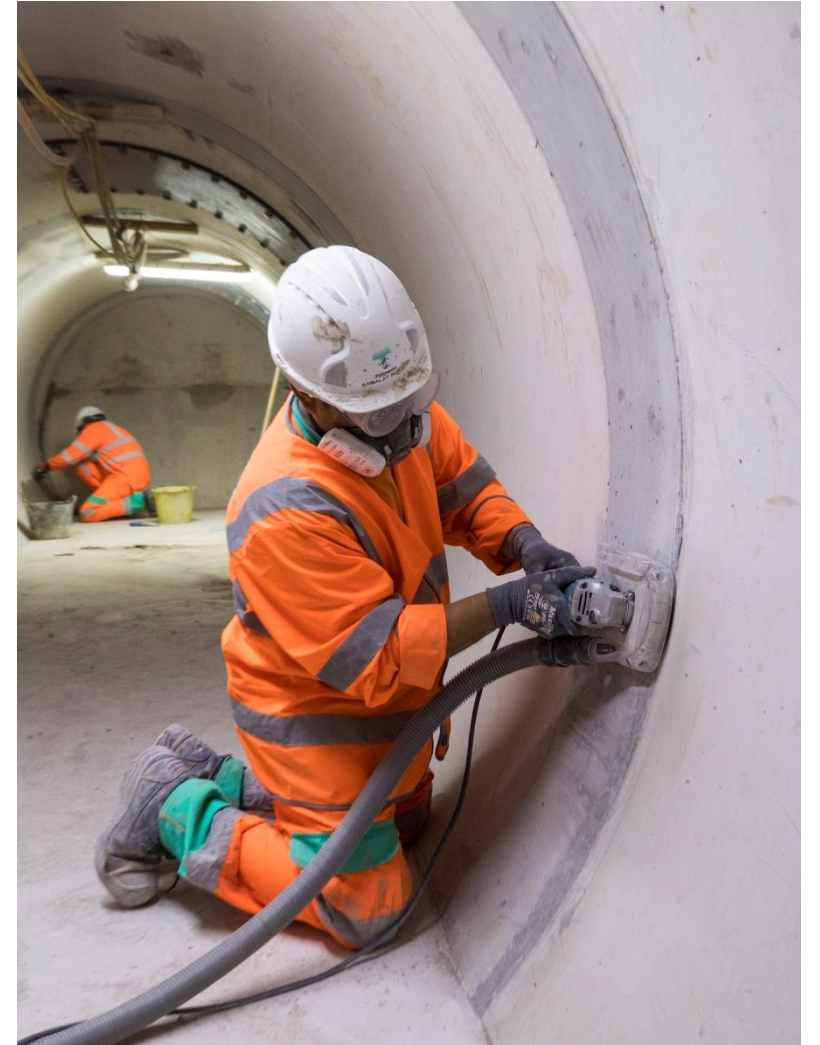
Recent Progress

Our recent milestones (since March 2020):

- Joint sealing and benching in the high level tunnel
- Pipe jack the low level tunnel
- Installation of the vortex pipe
- Completion of the air treatment chamber
- Below ground ventilation pipes
- Completion of the valve chambers
- Electrical kiosk piling
- Enabling works for the foreshore cladding



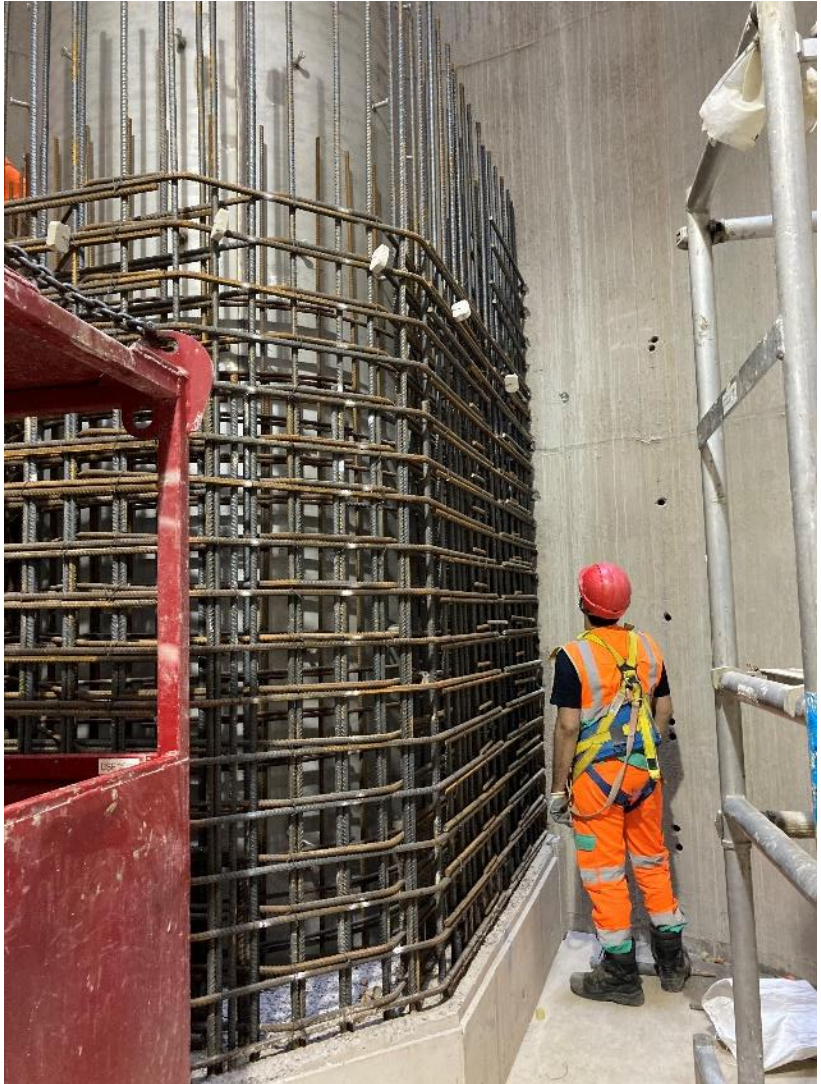
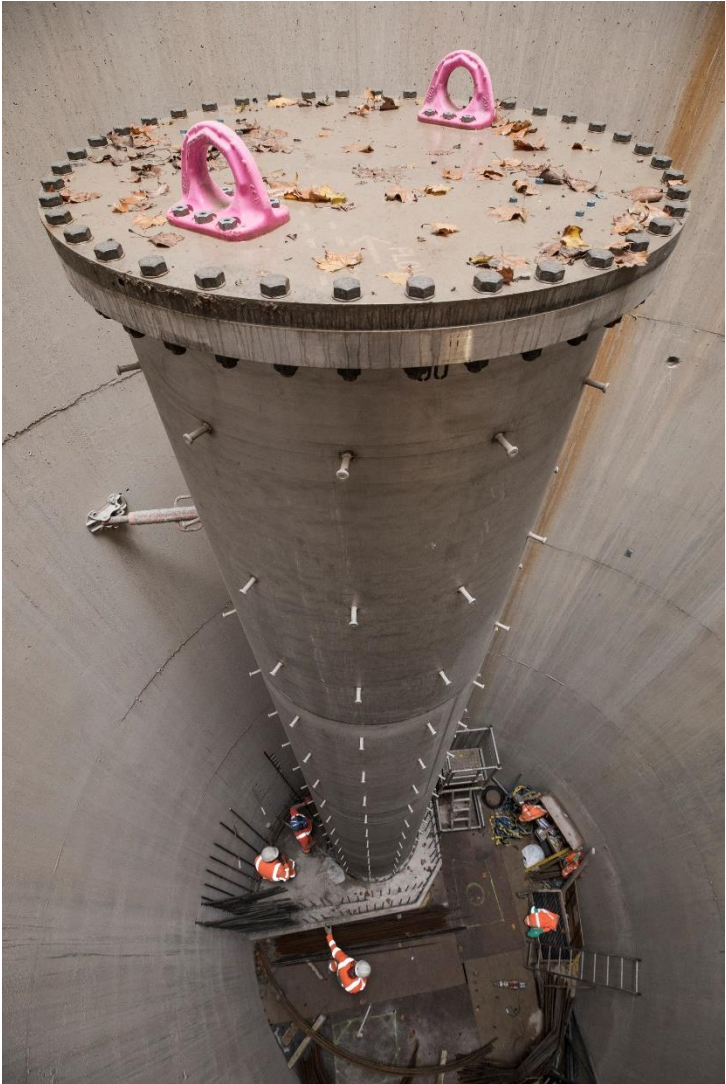
High Level Tunnel



Low Level Tunnel



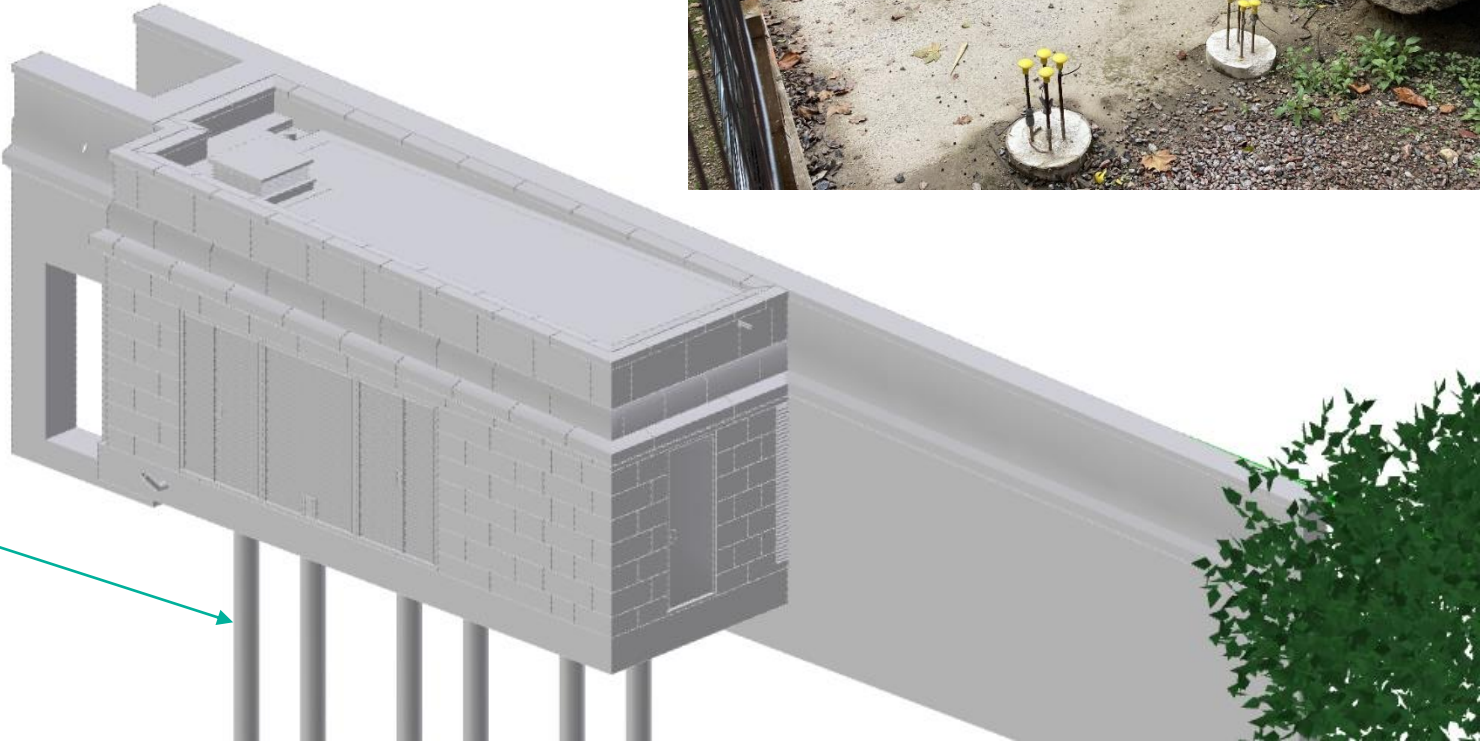
Shaft Vortex Pipe



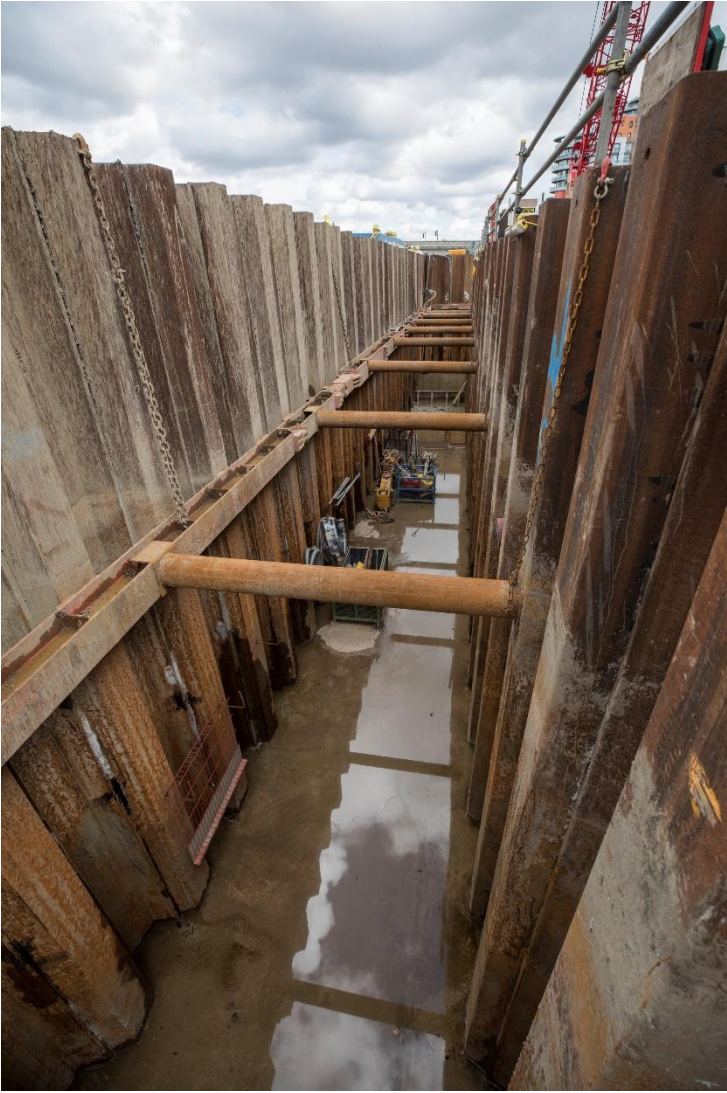
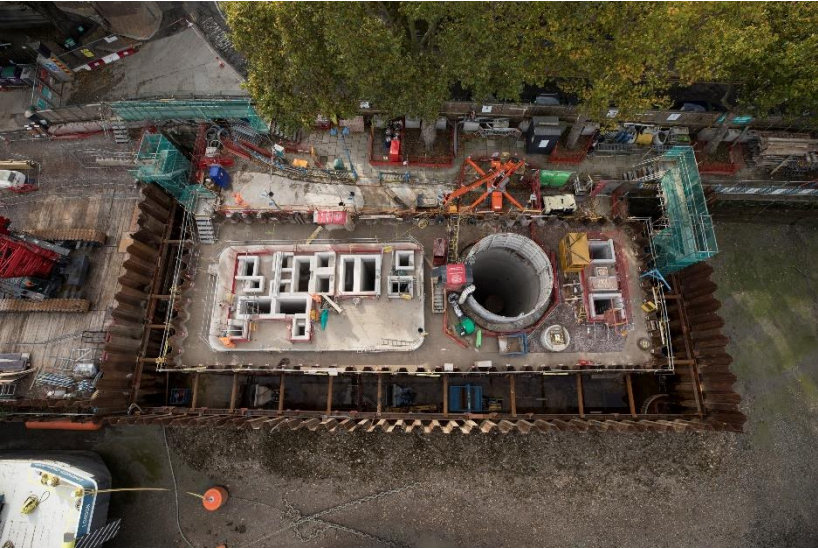
Chambers



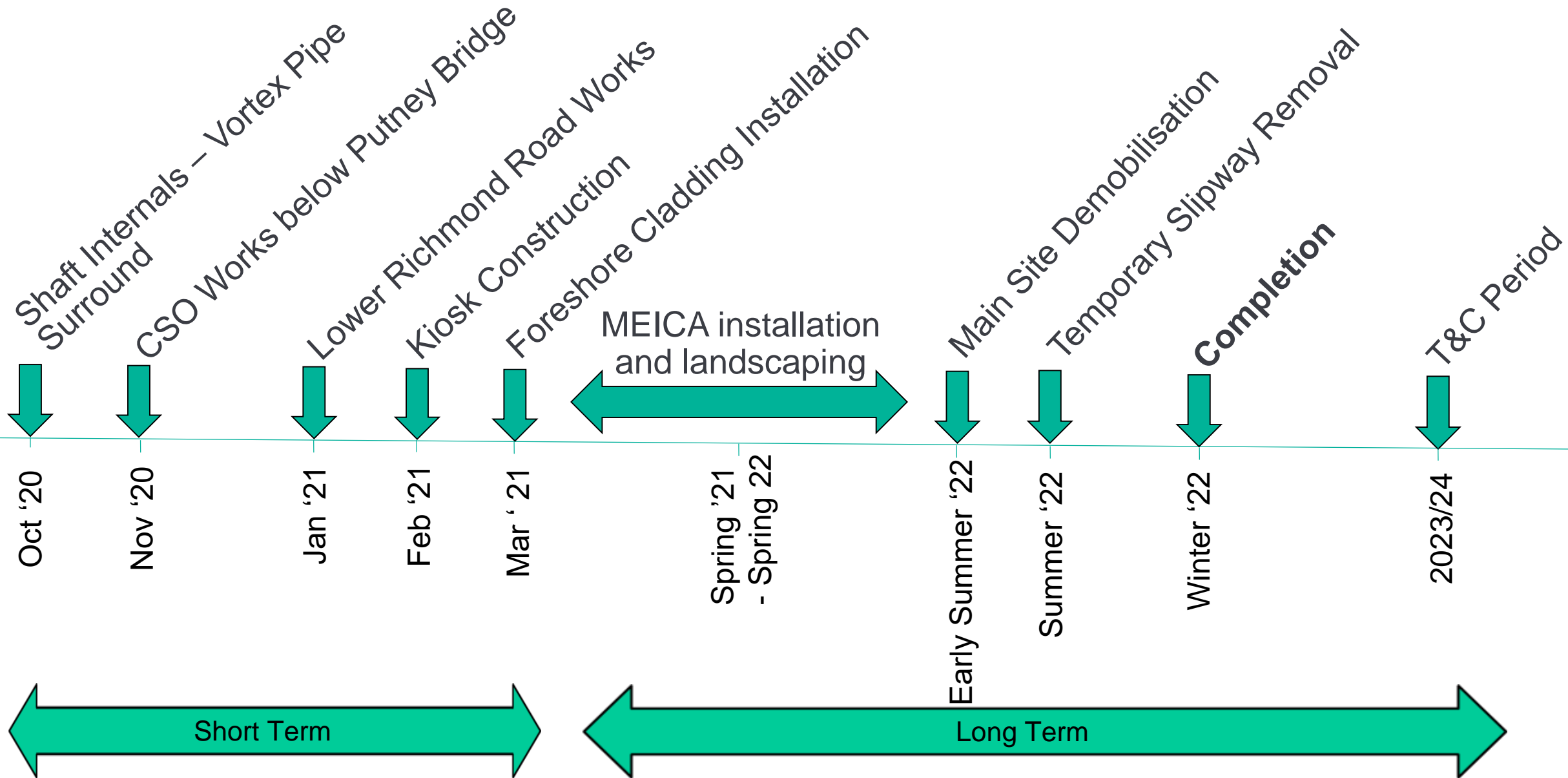
Electrical Kiosk



Foreshore Cladding

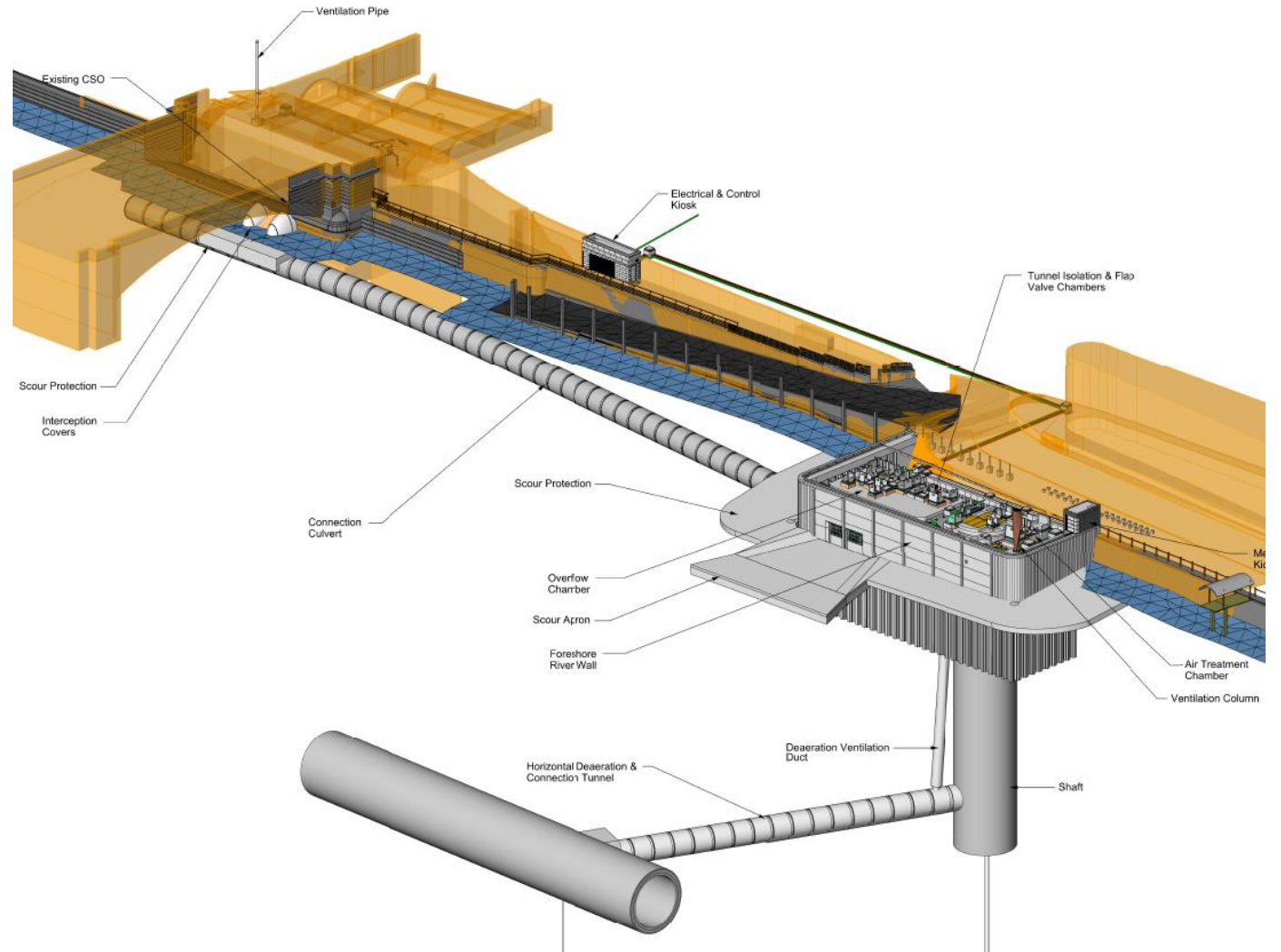


Upcoming Works

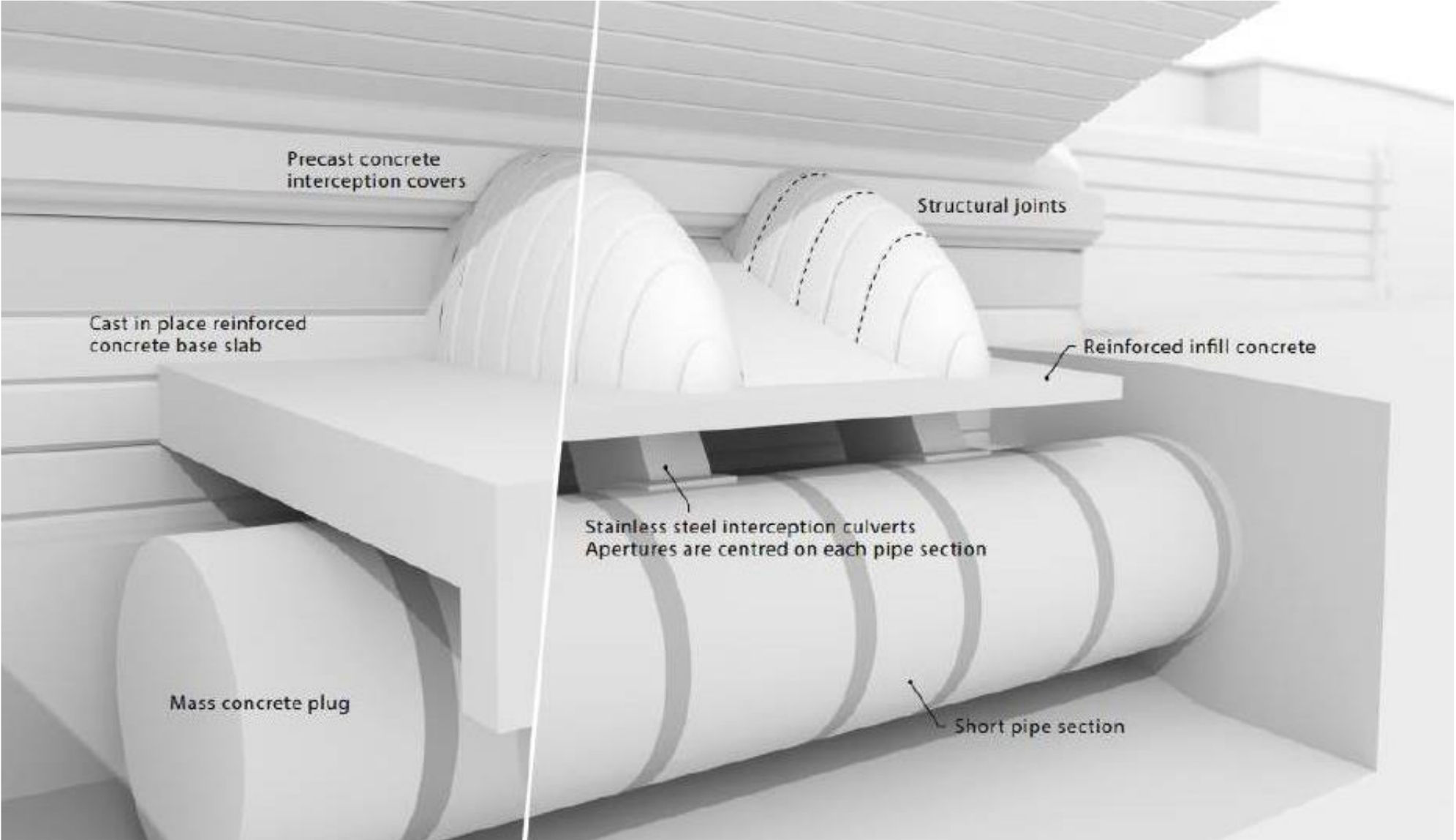


Upcoming Works

- CSO connection
- Shaft roof slab installation
- Commencement of MEICA installations
- Finalising details of A&L design



Combined Sewer Overflow Connection Works



QUESTIONS?

BARN ELMS

Chris North MSc CEng MICE
Section Manager - Barn Elms

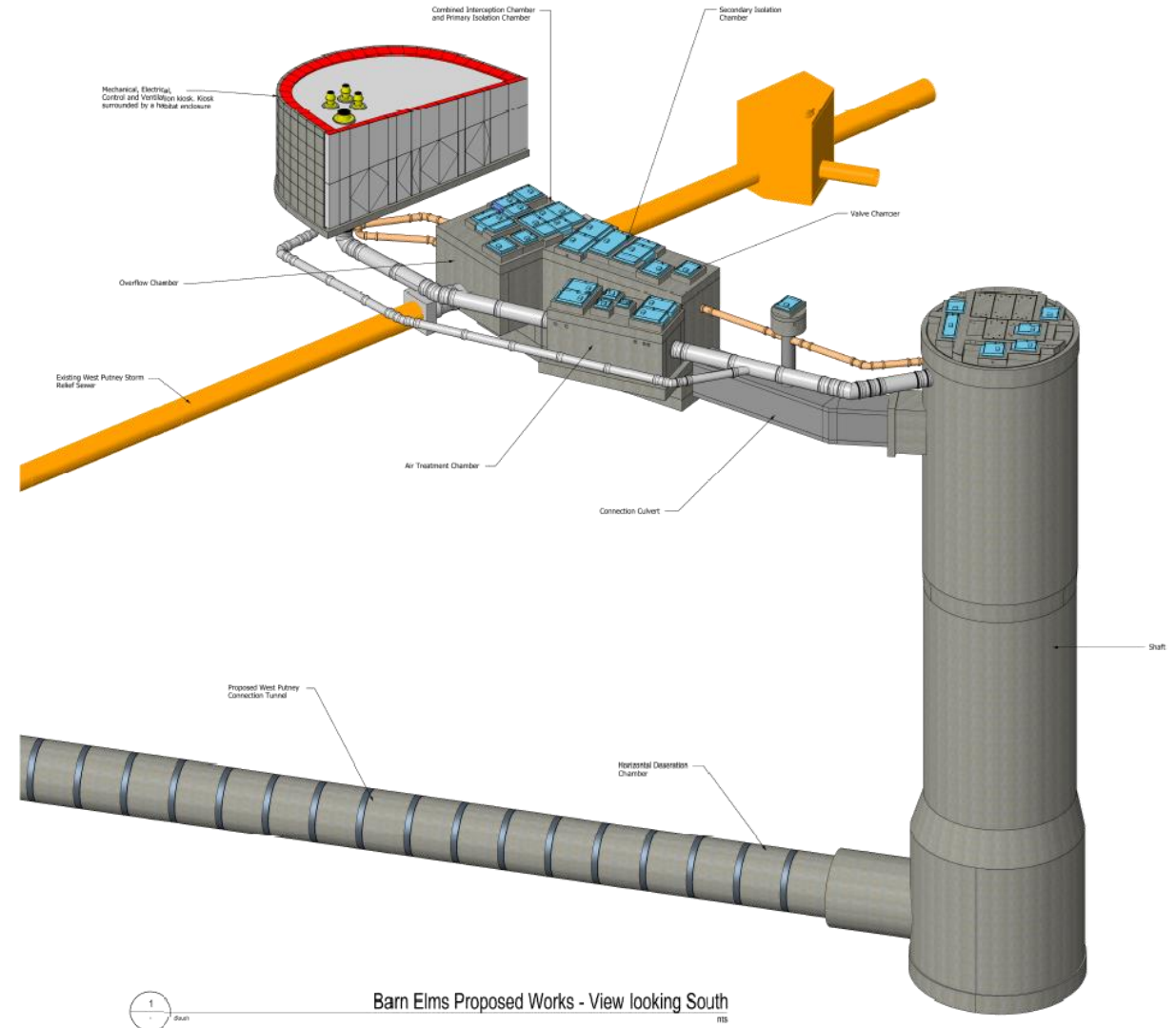
Barn Elms Overview



Recent Progress

Our recent milestones (since March 2020):

- Drive 213m pipe jack from the shaft to the main tunnel
- Install nested cofferdam and CSO rocker pipes
- Complete CSO interception chambers base slab and walls
- Completion of the mechanical and electrical kiosk structure
- Complete phase 1 of sports centre car park works



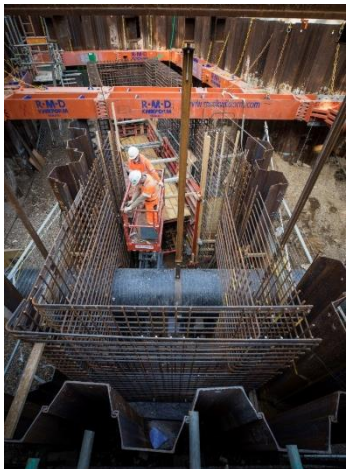
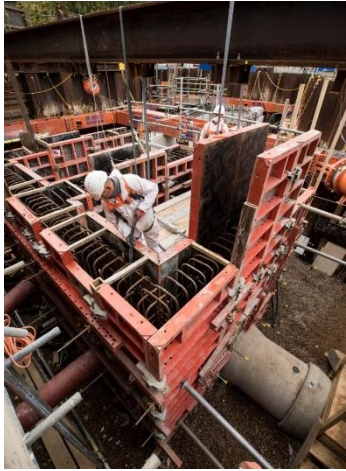
Pipe-Jack Tunnelling



Nested Cofferdam



CSO Interception Chambers



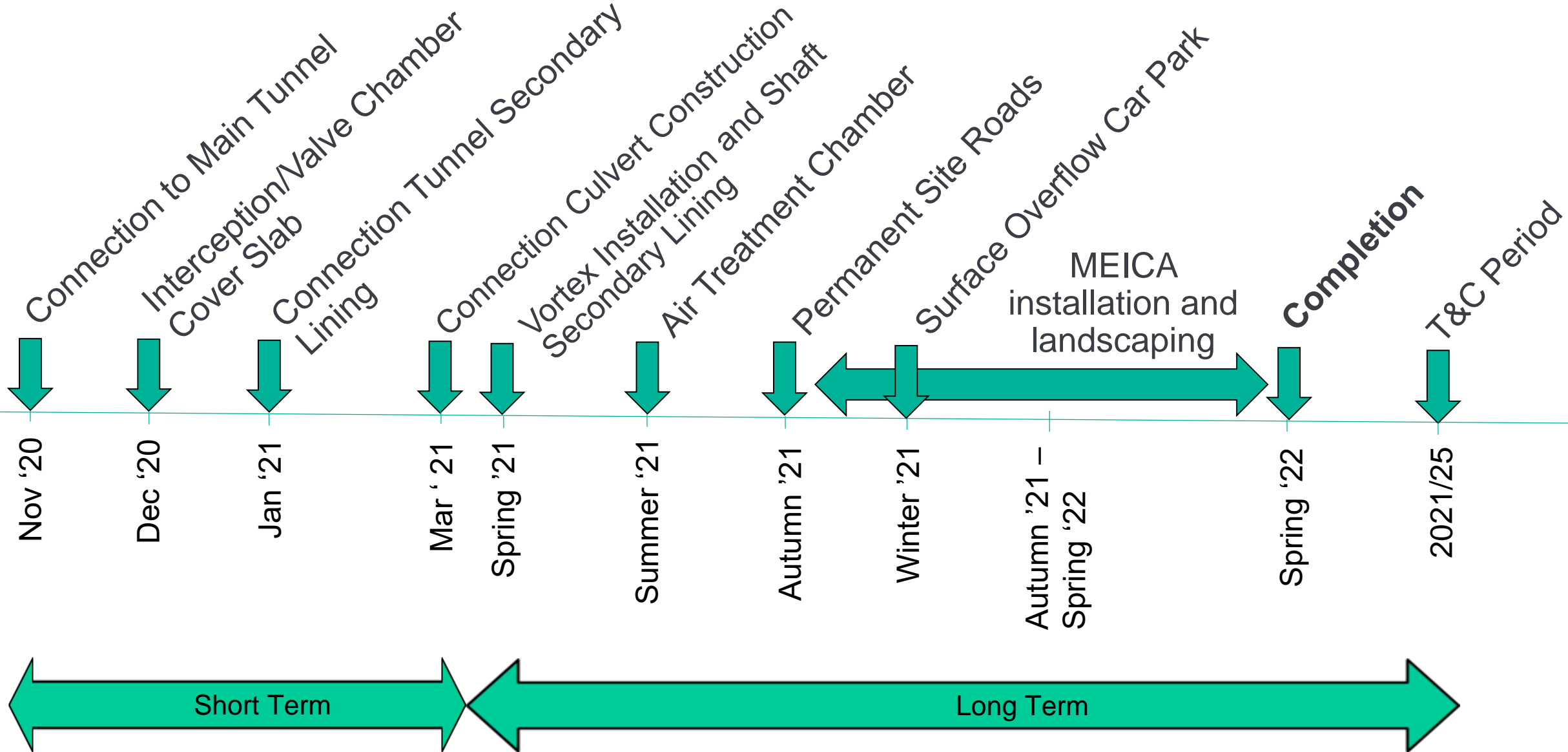
MEICA Kiosk



Sports Centre Car Park

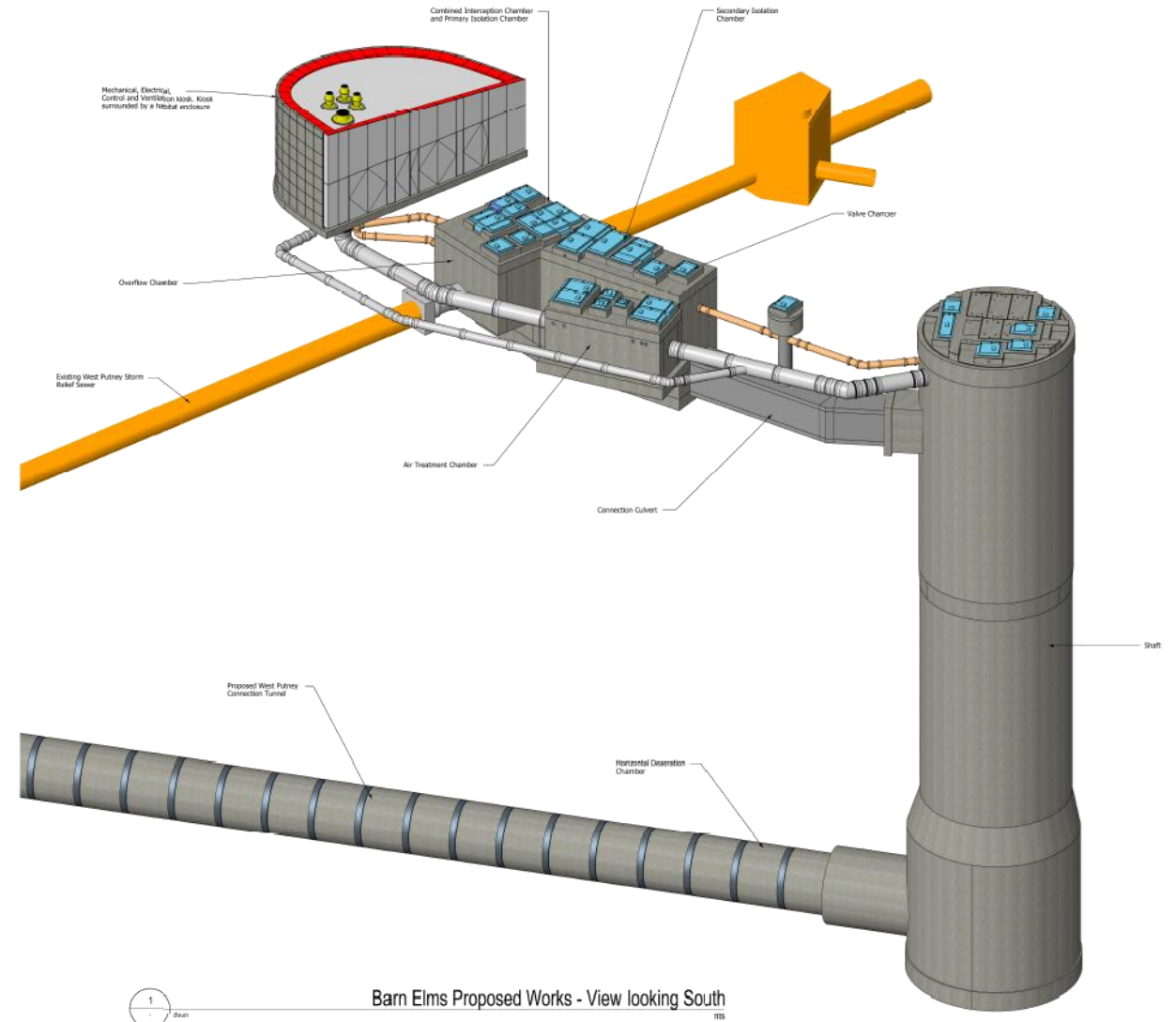


Upcoming Works



Upcoming Works

- Complete connection to main tunnel
- Complete secondary lining of connection tunnel
- Continuation of work on the hydraulic structures
- Connection culvert construction



Barn Elms Proposed Works - View looking South

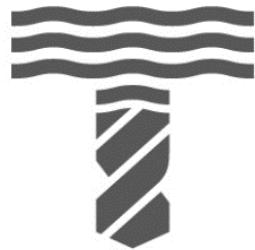
QUESTIONS?

COMMUNITY ENGAGEMENT

Katie Ashton
Communications Manager

Helpdesk

- Helpdesk have received the following linked to our schemes at Putney Embankment Foreshore and Barn Elms
 - 9 complaints
 - 33 enquiries
 - 1 commendation



Tideway



Balfour Beatty

Call: 08000 30 80 80

Email: helpdesk@tideway.london

Write to: Freepost TIDEWAY

How To Make A Claim if Affected By Tideway's Work

Who do I go to for advice?

Independent Advisory Service (IAS) Helpline for independent advice:

- 0800 917 8845 or info@tidewayias.co.uk
- Tideway's Compensation Officer, Louise Walsh, for personal assistance and advice
 - Helpdesk: 08000 30 80 80 / helpdesk@tideway.london or
 - Direct: 07971 077165 / louise.walsh@tideway.london

How do I submit my claim?

Louise can submit your claim to the Independent Compensation Panel (ICP) on your behalf, or you can submit your claim direct to the ICP: admin@tidewayicp.london

The IAS can send you a claim form, or you can download the form off the Tideway website: www.tideway.london/help-advice/compensation-information/Independent-Compensation-Panel

How To Stay Up To Date

INFORMATION SHEET



Tideway

bam MORGAN SINDALL Balfour Beatty

Ref : 2140-TDWAY-TTTUN-990-ZZ-Report-700004
March 2020

Information sheets



Virtual drop-in every first Tuesday of the month

communityrelations
Tideway : Carnwath Road Riverside

Dear Resident

We write to advise that we will be undertaking works within the acoustic shed at our Carnwath Road Riverside site this weekend. Our working hours on both Saturday 16 and Sunday 17 May will be 08:00 to 16:00.

Both the site gate and shed door will only be opened to allow our engineers to drive in and will be closed as soon as they have done so.

We apologise for any disturbance this may cause.

Regards

Community Relations
Carnwath Road Riverside

From: Balfour Beatty London
Follow us on Twitter @tidewaylondon

TIDEWAY | WEST
Carnwath Road Riverside, 27 Carnwath Road
London SW16 3HS

Working together: BAM Nuttall, Morgan Sindall and Balfour Beatty

Email notifications

TUNNELLING UPDATE



Tideway

bam MORGAN SINDALL Balfour Beatty

TBM Rachel:
Carnwath Road to Acton Storm Tanks
2,109 Rings Installed | 3,650m Tunnelled

TBM Charlotte:
King George's Park to Carnwath Road
617 Rings Installed | 648m Tunnelled

Monthly tunnelling updates



Quarterly newsletter



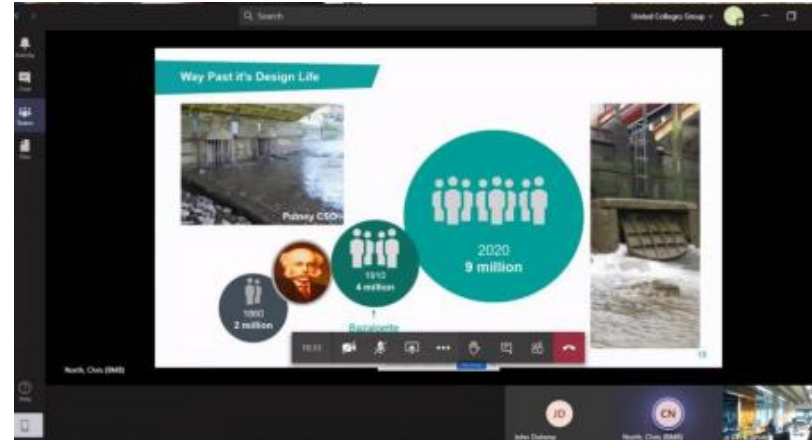
Community Liaison Working Group Meeting's

If you would like to be added to our mailing list for works updates/notifications, email Helpdesk@Tideway.London

Community Investment

A number of activities restarted following the first lockdown:

- Support for community groups
- Virtual work placements
- Virtual site tours
- Support for Wandsworth Foodbank
- Refurbishment of community bench



How to Stay up to Date



**READ
ALL
ABOUT
IT



Tideway

Lift the lid at:
www.tideway.london
/supersewer



en-gb.facebook.com/TidewayLondon/



www.instagram.com/tidewaylondon/



www.linkedin.com/company/tideway-london/



twitter.com/TidewayLondon

@TidewayLondon

OVERALL PROJECT UPDATE

Andeep Gehlot
Communications Lead (West)

Where are our TBM's?

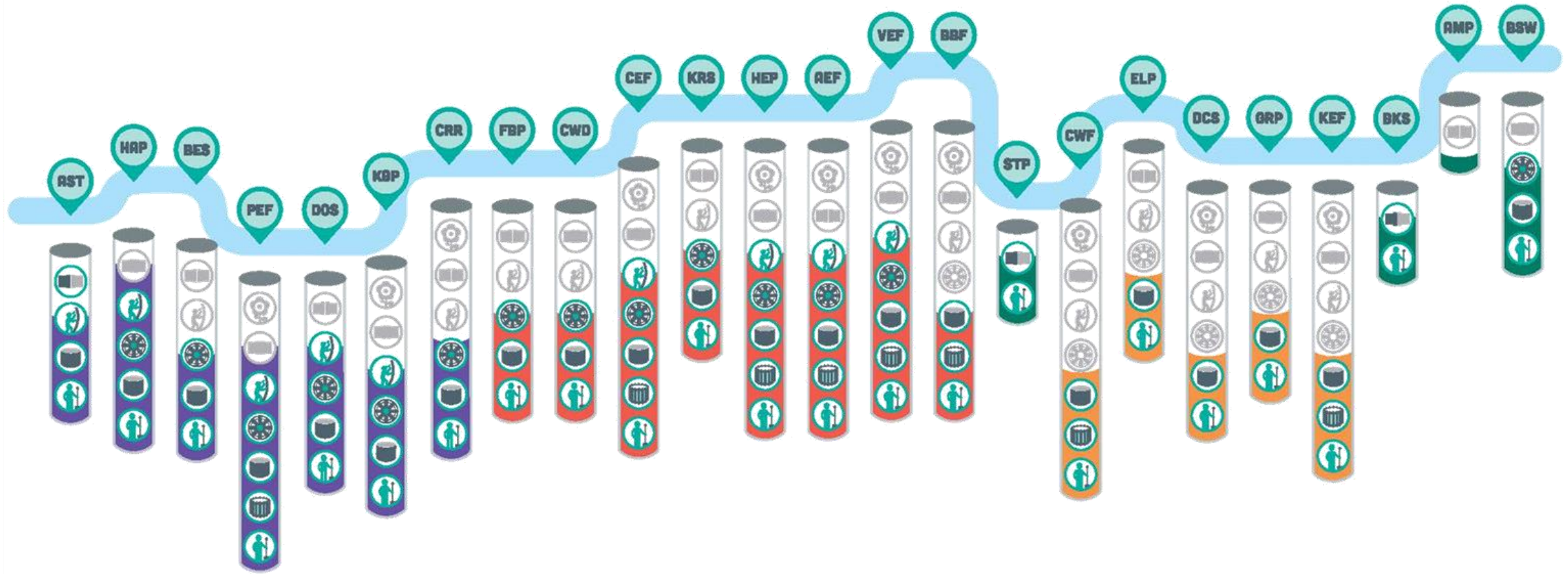
The Tideway TBM tracker: www.tideway.london/tbm-tracker



Tideway Overview

BUILDING THE SUPER SEWER

Autumn 2020



KEY

- Site Preparation
- Cofferdam Built
- Shaft Construction
- Tunnelling
- Secondary Lining
- Sewer Connections
- Public Realm

- West Sites
- Central Sites
- East Sites
- Thames Water Sites



POETRY

Bridget Sawyers
Public Art Consultant

Signature Ventilation Columns

Principle:

- As companies Tideway and Thames Water have **no** interest in “branding” the sites.
- However, we do need to comply with our vision:
 - “Site designs shall be of high quality and provide value. They shall respect each site’s individual location and setting, while recognising the contribution of all sites to providing a cleaner, healthier River Thames.*
 - Designs shall recognise the importance and quality of the engineering infrastructure below-ground...”*
- Therefore we do want *some* continuity across the project – particularly at Public Realm sites and text and information will refer to the projects ie **“Thames Tideway Tunnel”** rather than the companies involved.
- Given the longevity of the structures, we are aiming for a timeless, durable approach.

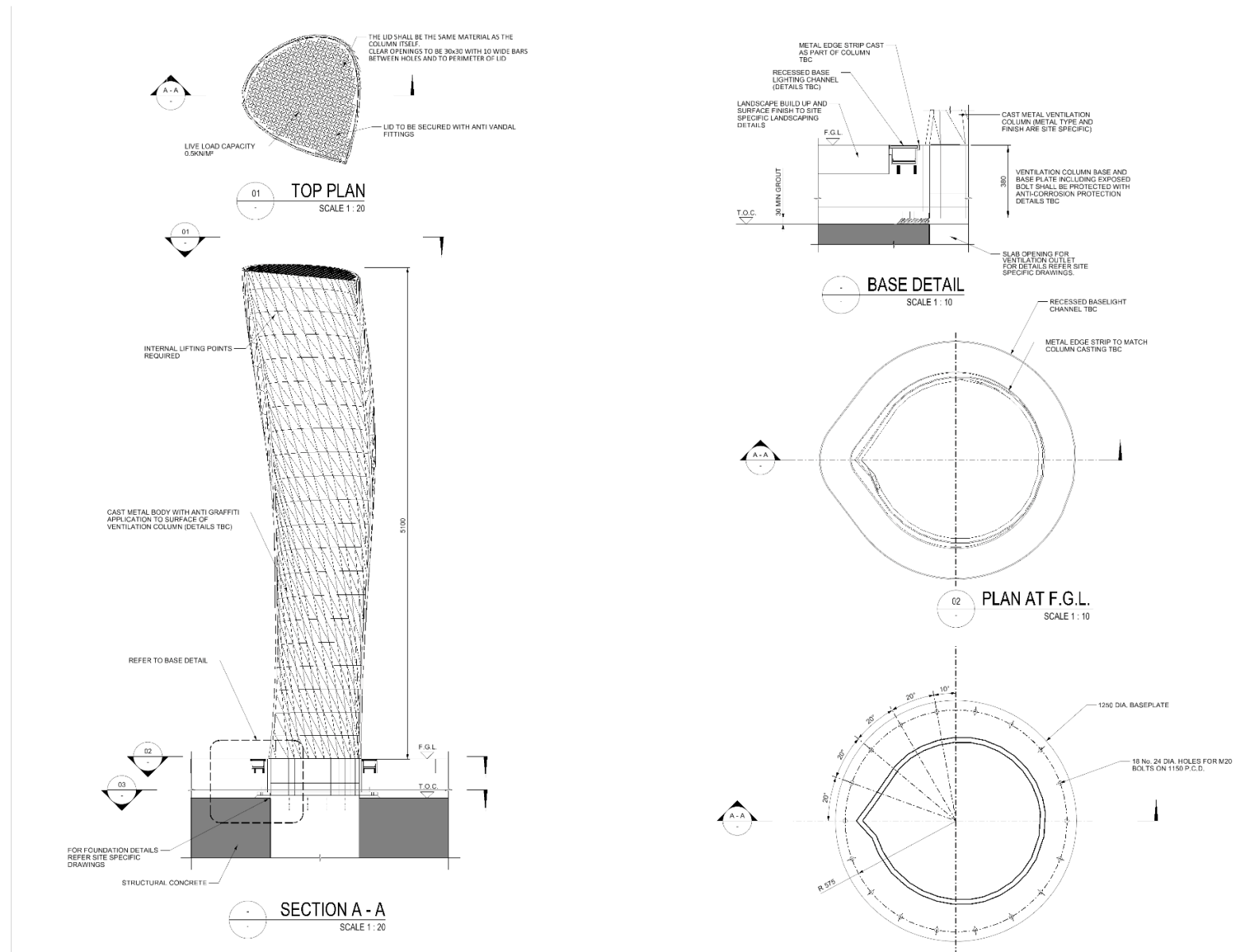
Signature Ventilation Column (SVC) DCO Requirements:

Design Principles

Vision: *developing a signature across the sites that recognises the collective importance of the project and the sites to the river.*

FNCC.04: *The 'signature' design shall be used for all ventilation columns serving the shaft, except where stated otherwise in site-specific principles. The ventilation columns shall stand a maximum 6.5m high and have a minimum proportion of 1:5 (girth to height). Multiples of the signature design shall be used to achieve the cross-sectional areas required for ventilation.*

Site Specific Requirements



Signature Ventilation Columns



Lorem ipsum dolor sit amet, consectetur

Polished Strip and Text Size Study

- Preferred Strip Width: 85mm
- Text Size: 60mm (sentence case)
- Font: Doves
- Characters: Limited to 150 (to be legible)

The Significance of the Doves Font:

- The Doves Press was founded in 1900 at Hammersmith. The font was created as a reinterpretation of hand drawn manuscript fonts that preceded the creation of print. A bitter feud between the two partners of the press, lead to the throwing of their unique metal type, undercover of darkness into the River Thames.
- In 2015, after searching the riverbed of the Thames near Hammersmith Bridge with help from the PLA, Robert Green, managed to recover 150 pieces of the original type, which helped him to recreate the font and develop a digital version.

Signature Ventilation Columns Poetry Commission

Commission Selection Panel:

- Judith Palmer, Director of the Poetry Society
- Dr Karlien van den Beukel, Course Director BA (Hons) Creative Writing, London South Bank University
- Representatives from Tideway

Poet: Dorothea Smartt

Smartt is a Londoner with an international reputation as an established poet and a respected literary activist and live artist. Her work has received critical acclaim in both the UK and USA. She became a fellow of the Royal Society of Literature in 2019.

Smartt is known for drawing links between the past and the present, often focusing on people.

The selection panel were impressed and inspired by the detail of Smartt's proposal and the strength of her previous work and its relevance to the commission themes. They were excited by the idea that her poems would be about human stories, offering 'snippets of London life' across the centuries.



Commission Development

- The theme for this project-wide commission is London's Lost Rivers. The Lost Rivers, as London's natural drainage system, were the basis for Bazalgette's original sewer network and many are still the sewers of the capital. Fifty tributaries flow into the Thames, twelve along the route of the tunnel, and much has been written in response to their evocative and chequered history.
- Smartt's Approach:
"I hope to add a human and experiential dimension with some of my poems for the ventilation columns. I'll be looking to explore ways of drawing threads across social history, through the lives of people, events, or significant buildings ... reflecting and honouring well-known facts and features, as well as the lesser-known, marginalised or hidden past."
- Research included archival research in London libraries (such as the Southwark History Library and Archive, London Met, Wellcome Trust, Museum of Docklands etc.) and visiting museums with an active approach to contacting and talking to both everyday people and those with expertise on the history of the lost rivers, as well as visiting the Lost Rivers themselves. Her aim was to explore ways of covering a scope of centuries in the poems.
- Each column has a stand alone poem, which forms part of the collection *Hidden Rivers, Hidden Times* – a series of site-specific poems relating to the Lost Rivers, about human stories, offering 'snippets' of London life across the centuries.

Signature Ventilation Columns Poetry Commission: Putney Embankment

Beverley Brook seeks the Thames, finds her at Putney. 1921. Flappers plunge feet first, our city's finest swimmers riding her waters all the miles to Kew.

Beverley Brook seeks the Thames, finds her at Putney. 1921. Flappers plunge feet first, our city's finest swimmers riding her waters all the miles to Kew.

(154 characters)

References women's sporting history in London, the energy and ethos of the 1920s period, the cleanliness of the River Thames at that time, and the geographical range of the Thames.

Informed by a BFI film of the 1921 Amateur Swimming Association's (ASA) long distance swimming championship or 'Women's Thames Swim', which took place between Putney and Kew. Apparently, some of the women jumped in feet-first, rather than diving, because they didn't want to risk swallowing any of the dirty Thames water. [20th Century: 1921]

On watchful Wandle walks, Corporal Foster weaves alongside the river, an engine working watermills for earthenware, candles, and beer.

The furious Fleet flows red with Roman blood, Boudica battles bravely.

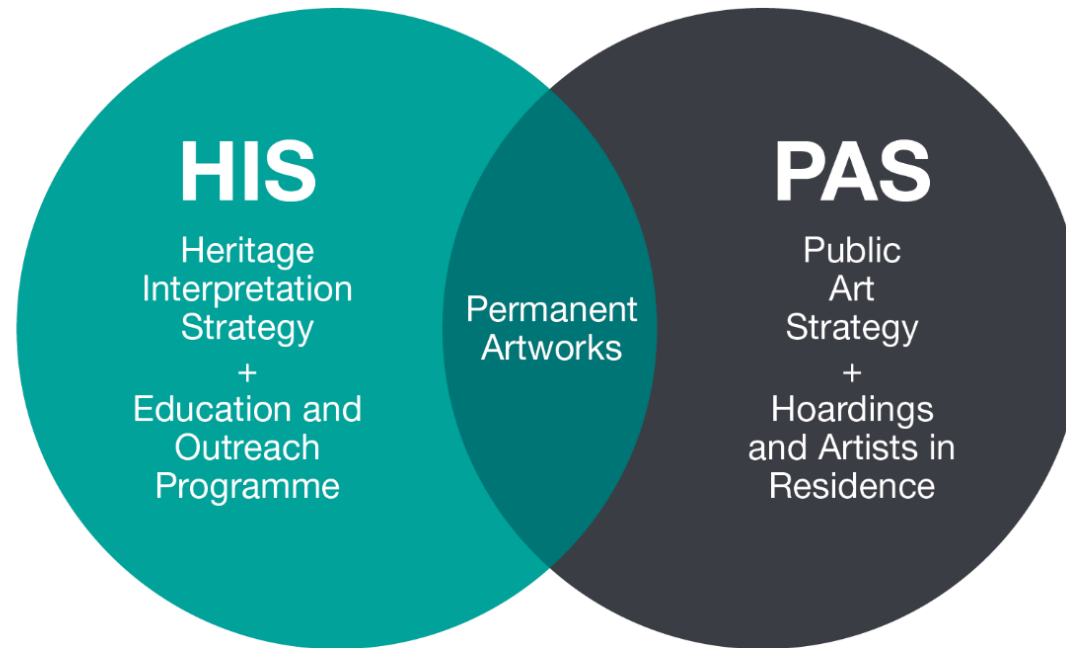
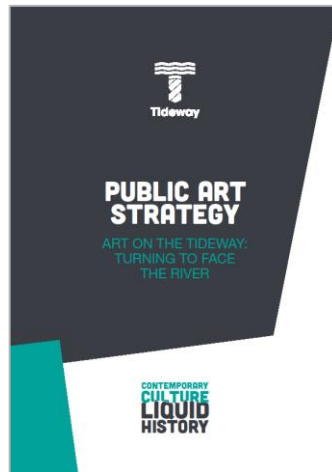
Sloane's Jamaican fortune, rooted in African trauma, blossoms a physic garden. Palms, tropical ferns, the ancient olive tree struggle to find peace.

Rearing, wings dip landing on river-stairs worn from work and weather. The Heron, soul of a drowned Lighterman, keeps his oath and dwells on the Thames.

In pleasure's garden brides to be seek to be seen. Beneficial unions set the sun on virgin days, when a husband was a woman's right to be in the world.

Local law and land lords filled nooses, lent Neckinger its name: *those French monks turned marsh into ripe farmlands, built mill, dock, and gibbet.*

CONTEMPORARY CULTURE LIQUID HISTORY



- 21 Permanent commissions
- 14 Hoarding commissions & community engagement
- 2 Artists in Residence commissions
- 1 Poetry commission (19 poems, 9 sites)
- 1 Manhole cover commission
- 1 Signage & wayfinding commission

West – Recreation to industry: A Society in Transition



BARN ELMS HERITAGE NARRATIVE

Recreation to Industry: Society in Transition.

Babington's encrypted correspondence with Mary Queen of Scots was intercepted and decoded by Walsingham's spies.



a b c d e f g h i k l m n o p q r s t u x y z
o † ‡ § ¶ · ¸ 9 0 1 2 3 4 5 6 7 8 9

Nulles ff. - . - . d. Dowbleth σ

and for with that if but where as of the from by
2 3 4 5 6 7 8 9 0 1 2 3 4 5 6 7 8 9

so not when there this in wich is what say me my wirt
† ‡ § ¶ · ¸ 9 0 1 2 3 4 5 6 7 8 9

send lre receave bearer I pray you Mte your name myne
† ‡ § ¶ · ¸ 9 0 1 2 3 4 5 6 7 8 9



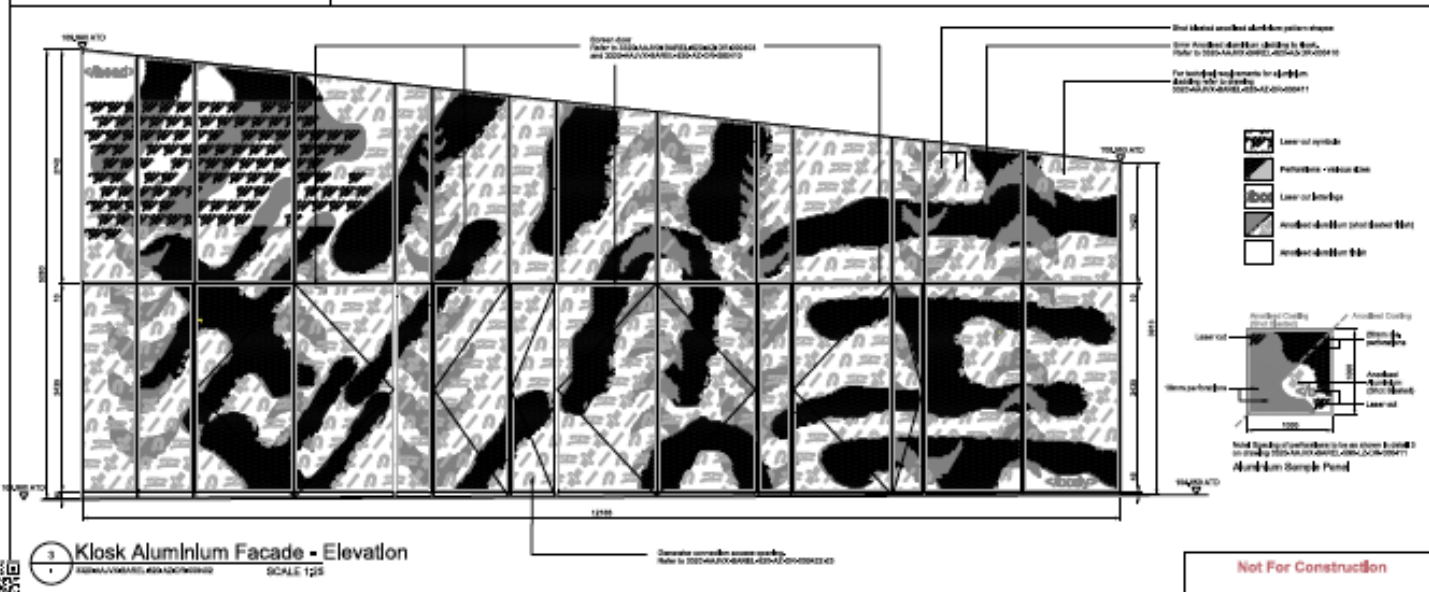
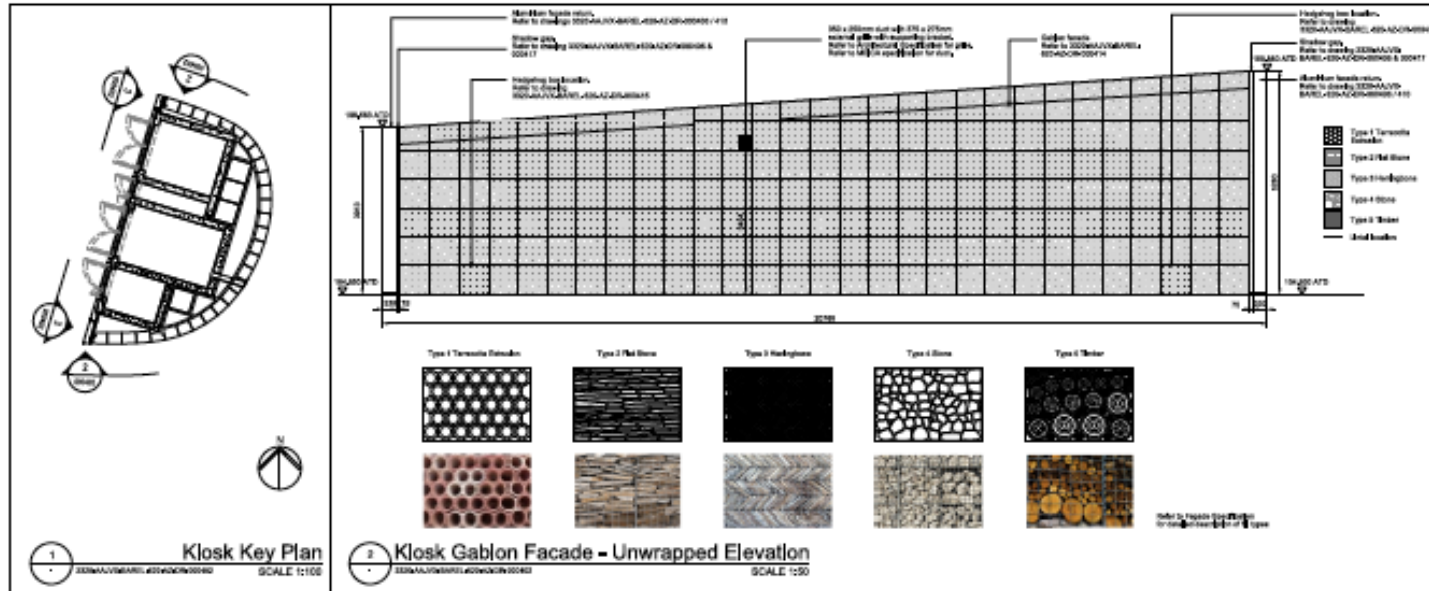
Artist Adam Chodzko



BARN ELMS

A collage of images related to the 'A Way from Heaven' manuscript. The central element is a large grid of text, with a prominent 'A' and 'H' pattern overlaid. To the right is a portrait of a woman in a ruff. Below the grid is a photograph of several papers on grass. At the bottom right is a row of feathers. Text elements include '1. waye n. from H. heaven' and 'A way from heaven'.

A way from heaven

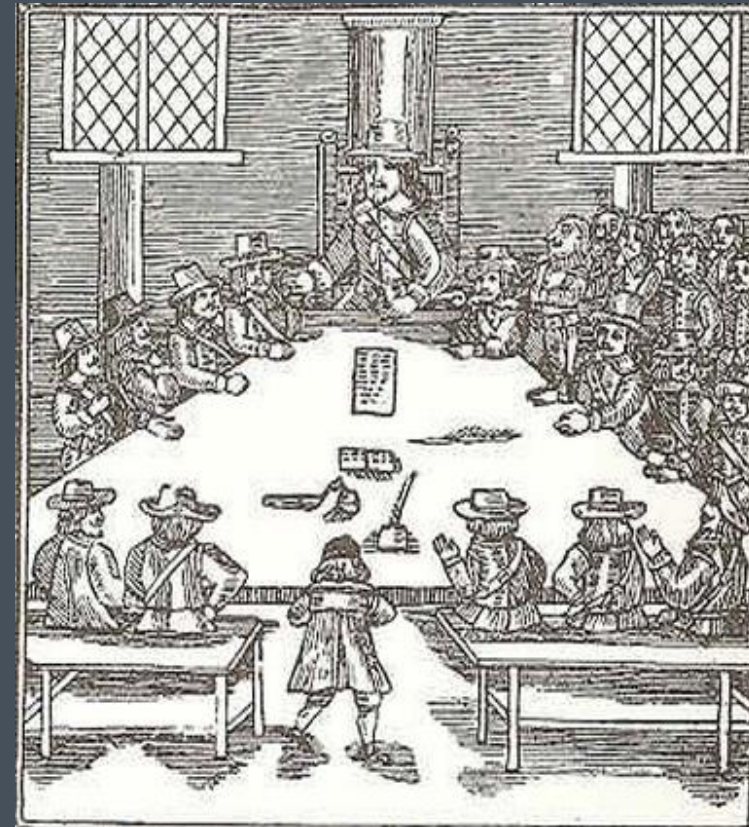


PUTNEY EMBANKMENT FORESHORE HERITAGE NARRATIVE

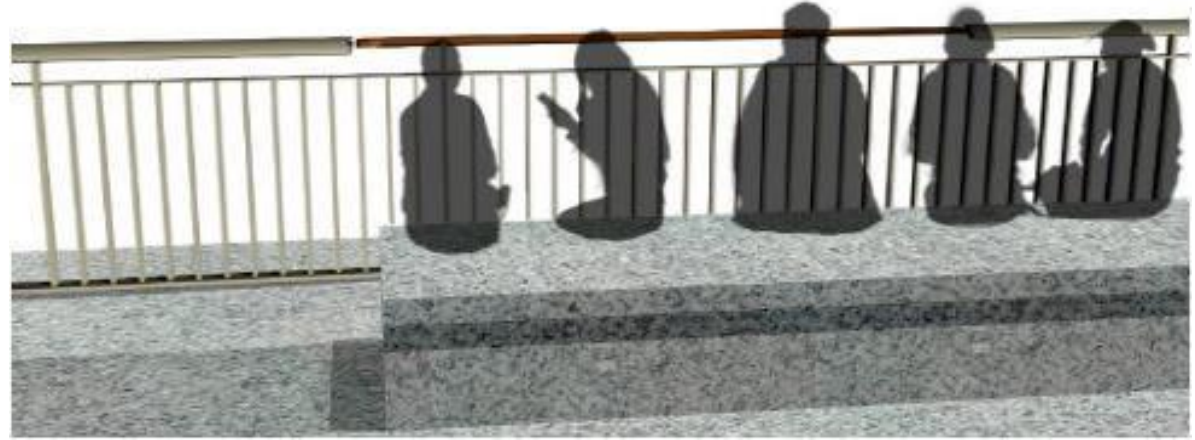
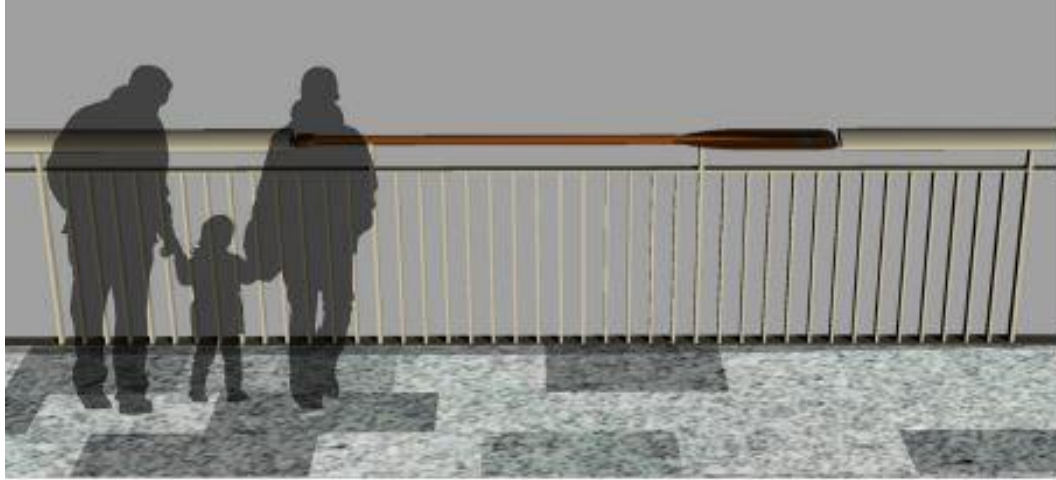
Ways in which cultural context influences popular movements advocating social change, to generate varied forms of political engagement.



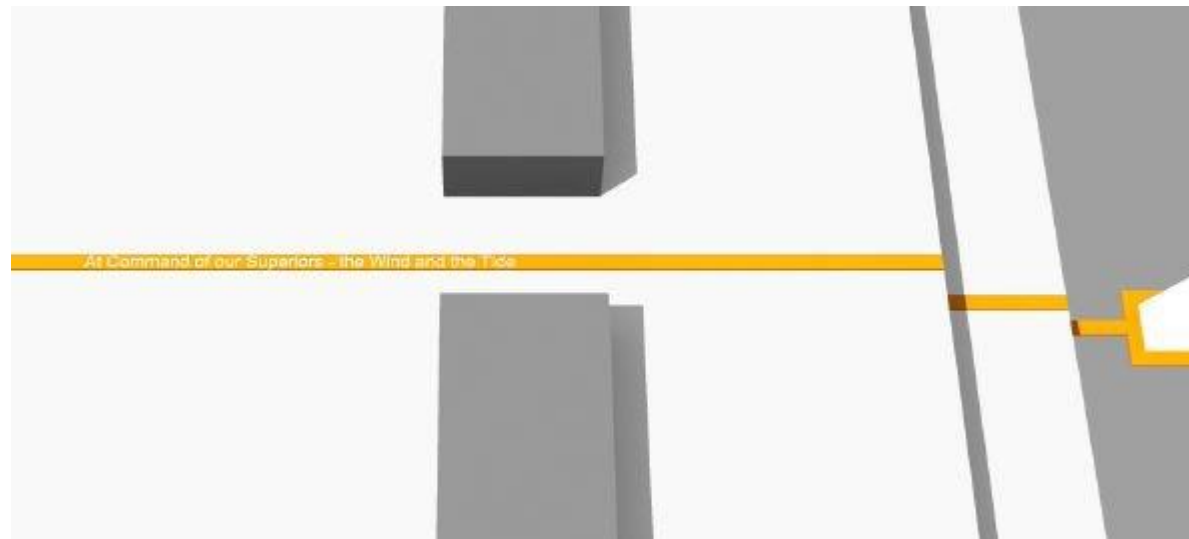
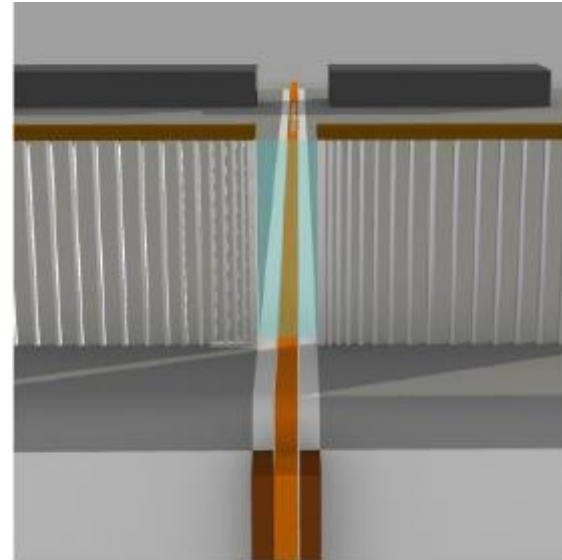
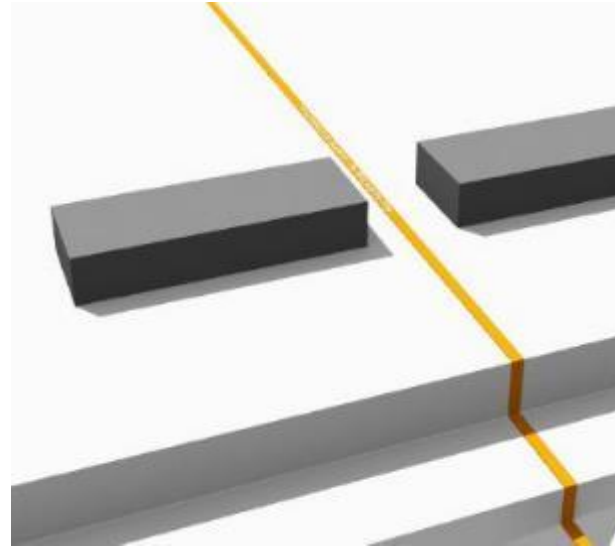
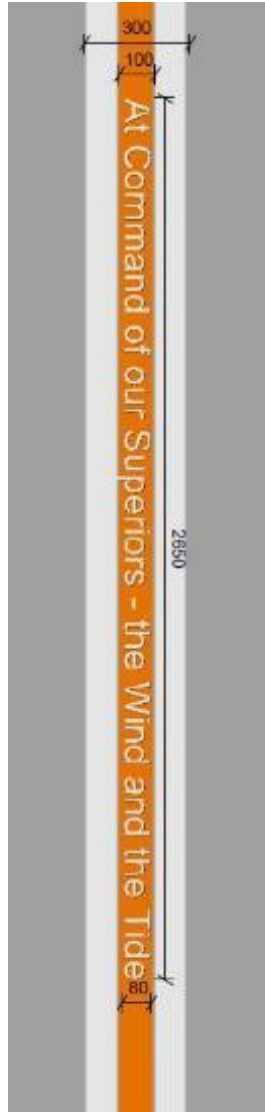
Artist Claire Barclay

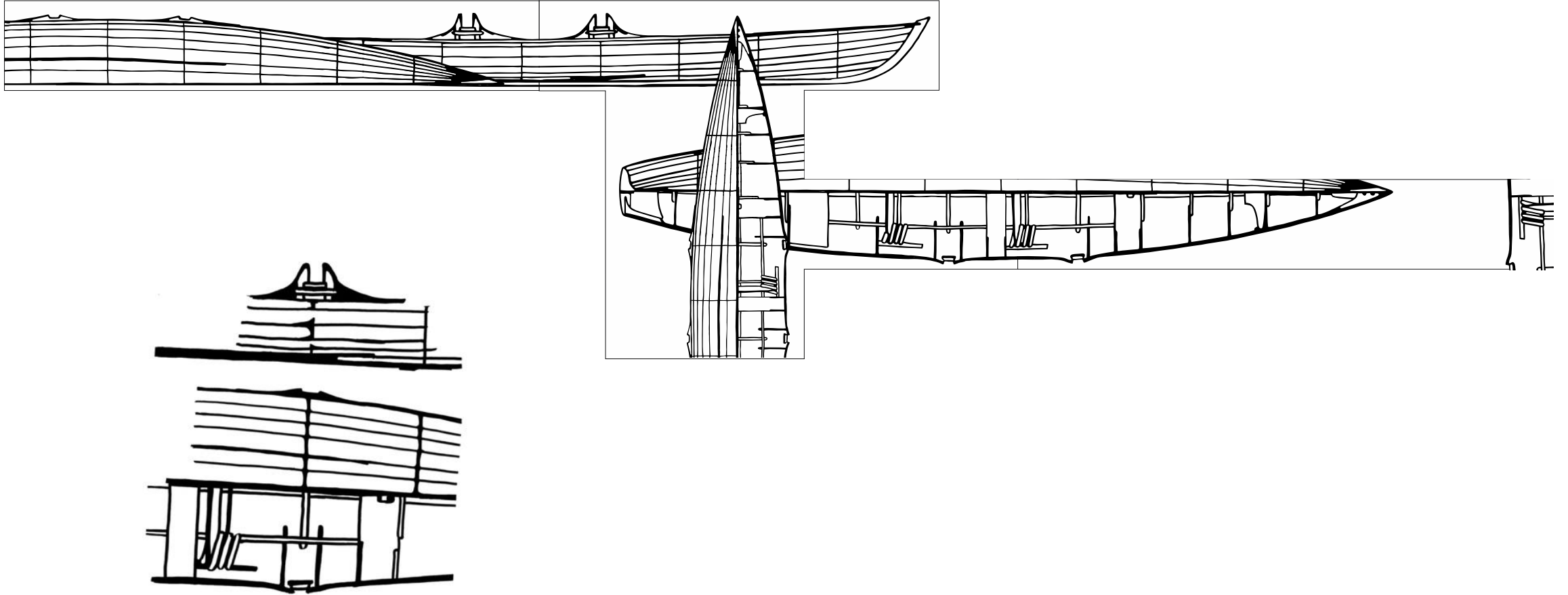














FOR MORE INFORMATION PLEASE SEE:

<https://www.tideway.london/benefits/art-on-the-tideway/>



Tideway

RECONNECTING LONDON WITH THE RIVER THAMES

#SuperSewer

www.tideway.london