

CREMORNE WHARF DEPOT COMMUNITY LIAISON WORKING GROUP

9 December 2020



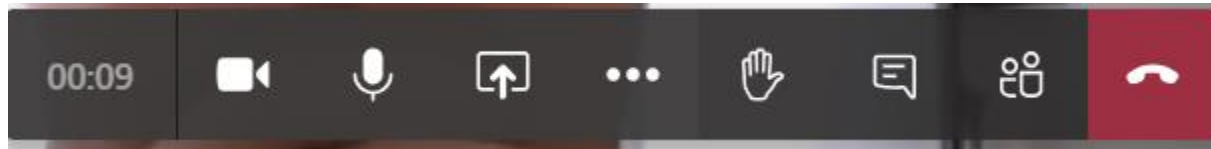
Tideway



Virtual CLWG

Welcome to our latest virtual CLWG meeting for Cremorne Wharf Depot. To help this meeting run smoothly:

- Please can you mute your microphone while the team are presenting, there will be opportunities for questions after each site update.
- If you have a question, please select 'raise your hand' in the tool bar (see below) in the middle of your screen, or comment in the 'conversation' box and we'll ask you to unmute yourself to ask the team your question.

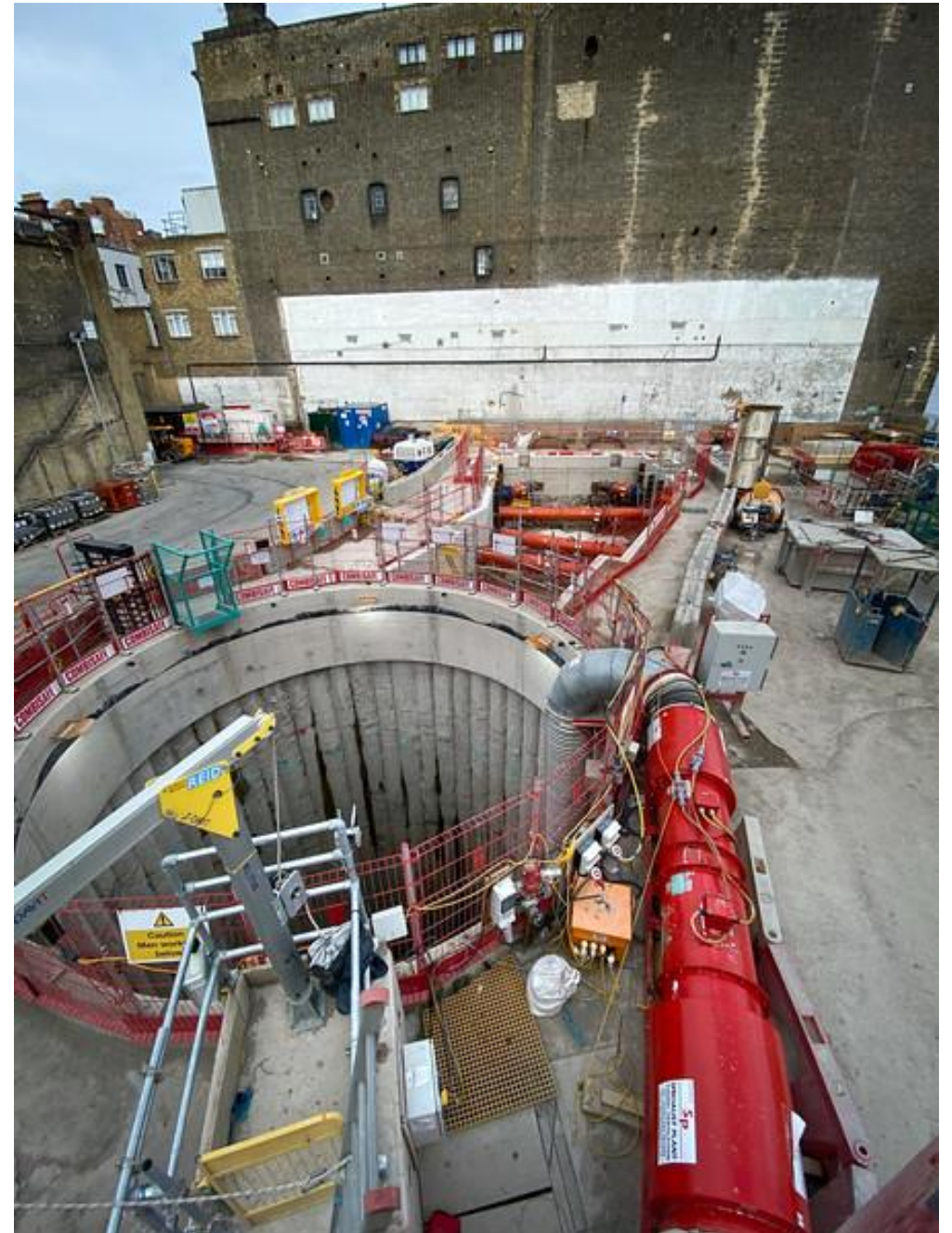


- These meetings are generally clearer if you're wearing headphones or earphones.

Enjoy the meeting

Agenda

- Welcome and Apologies
- Actions of previous meeting
- Tunnelling update
- Cremorne Wharf Depot site update & community feedback
- Environment Update
- Community Relations
- Any other business and open discussion



CENTRAL AREA TUNNELLING UPDATE

Michael Slack
Community Relations

Tunnelling complete



Ursula breaks through at Chambers Wharf – 30/11/20

- Central tunnelling now complete
- Tunnelling started at our Nine Elms site in November 2018
- Ursula travelled 7.6km eastwards to Bermondsey
- Millicent travelled 5km to Fulham
- 1,691,399 tonnes of spoil excavated
- 1,299 barges used to removed spoil
- 94,000 lorries taken off the roads as a result
- Next stage is to install the secondary lining within the tunnels.



CREMORNE WHARF SITE UPDATE

**Toma Schonkeren
Site Agent**

Progress since last meeting

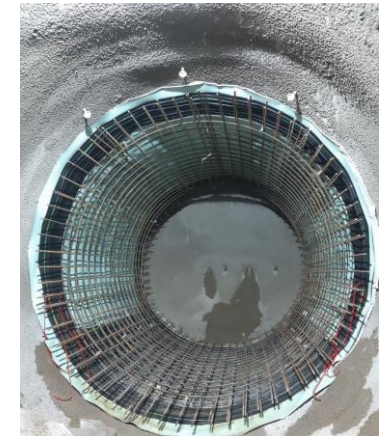
Connection Tunnel Works Primary Lining Works

- Project milestone achieved on completion of the Connection Tunnel Primary Lining in October.
- All 147 tunnel advances completed including setting a production record of 7m spray concrete lining advances in 24 hours.
- Project wide recognition on construction on the spray concrete lining primary lining works



Connection Tunnel Works Secondary Lining Works

- 1st full round secondary lining shutter being constructed
- Trial pour being carried out to benchmark quality & workmanship for permanent works
- Waterproofing membrane installation along connection tunnel
- Steel-fixing commenced
- 1st permanent works concrete pour on target before Christmas Shutdown



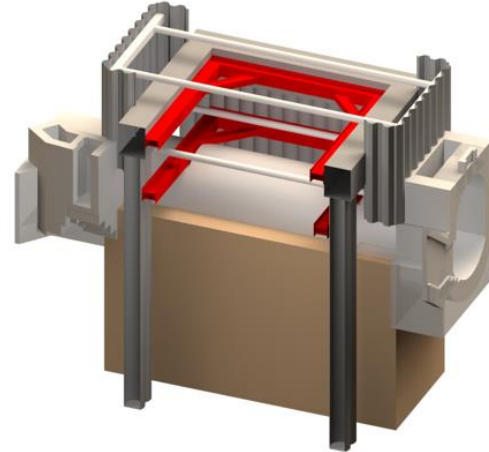
Progress since last meeting

Interception Chamber Works

- Capping Beam constructed
- 1st level of propping installed across the structure enabling us to excavate
- 2nd level of propping underway
- Infill panel construction works underway to concrete and seal the Counter Creek Sewer connection with the chamber

Insewer Grouting Works

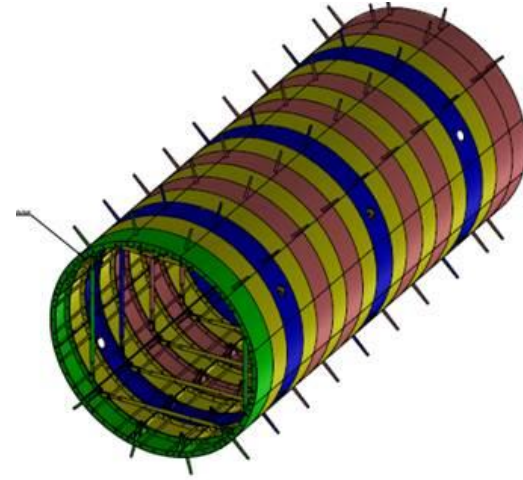
- Injection resin works from within the Counters Creek Sewer
- Injection works progressed on tidal phases as river water enters the sewer on each high tide
- Purpose to seal around the sewer between the sewer and the piles constructed



Progress since last meeting

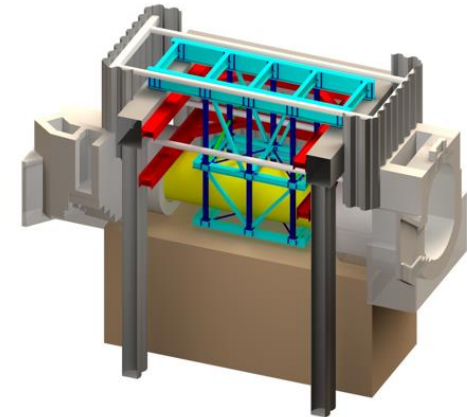
Connection Tunnel

- Continue connection tunnel spray concrete lining excavation
- Install waterproofing reinforcement & concrete secondary lining



Interception Chamber

- Temporary Flume installation within Counter's Creek Sewer
- This will allow the existing sewer to continue to operate as we excavate and construct the reinforced concrete base slab, lining walls, penstock gates, columns, baffle slabs and walls etc.



Christmas shut-down

- Cremorne Wharf site will shut for the holidays at the close of business on Tuesday, 22 December 2020.
- The site will reopen for works on Monday, 4 January 2021.
- Security and maintenance personnel will be present on site during the break.



Target Programme

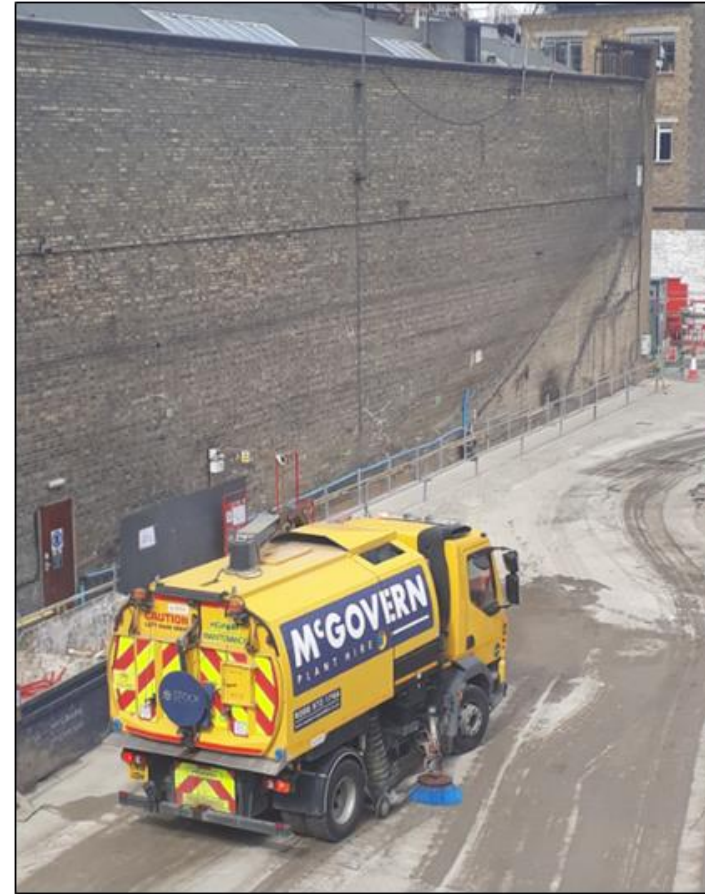
[illegible]

CREMORNE WHARF DEPOT ENVIRONMENT UPDATE

Katy-Leigh Smith
Environmental Lead

How we are managing the site

- Regular dust sweeper
- Spraying down works when needed
- Daily activity briefing highlighting measures in place
- Acoustic blankets installed around areas identified as potentially causing some disturbance – e.g. generators
- 24/7 helpline for residents who are disturbed
- Lights on site turned away from residents when safe to do so



CA-PT-100013

Daily Activity Briefing Record
17/09/2020 CREWD

(SSoW):
ALL PERSONS ON SITE ARE RESPONSIBLE FOR ESTABLISHING AND MAINTAINING THEIR OWN SEGREGATED WORK AREAS. IF YOU ARE WORKING IN THEIR AREA OR IF YOU READ AND SIGN UP TO WORK SPECIFIC DABS IF YOU ARE WORKING IN THEIR AREA OR IF YOU UNDERSTAND WHERE EVERYONE IS WORKING AND ANY ASSOCIATED HAZARDS.
IF INVOLVED IN ANY TYPE OF EXCAVATION OR DRILLING MUST COMPLETE THE ATTACHED 8 POINT FORM PERMIT TO BREAK GROUND PRIOR TO STARTING WORK. IF IN DOUBT, STOP AND ASK THE SUPERVISOR. HAVE I GOT ALL THE INFORMATION, TOOLS AND EQUIPMENT, CORRECT TRAINING FOR THE TASK IF I AM A SUPERVISOR.
DURING OPERATIONS NO OVER HEAD LIFTING, EXCLUSION ZONE SET UP & RADIO COMMUNICATION TO BE MAINTAINED.
EXCLUSION ZONES TO BE MAINTAINED AT ALL TIMES AT AREA OF WORK & NO UNAUTHORISED ENTRY. DURING EXCAVATION AREAS OR OTHERS WORK LOCATION WITH CONSENT OF THE SUPERVISOR.
ENTER SITE WORK AREA, FULL PPE MUST BE WORN AT ALL TIMES (REFER TO YOUR RAMS)
WASTE INTO CORRECT SKIPS PROVIDED. DO NOT THROW WASTE IN COSHH BINS, USE CORRECT PPE.
BE TAKEN OUT OF THE IGNITION, MACHINES PARKED CORRECTLY AND USE 3 POINT CONTACT IN AND OUT. WHEN PLANT ARE NOT IN USE TURN OFF YOUR ENGINES, IF PLANT NOT REQUIRED ON.
PROTECTION TO BE MAINTAINED AT ALL TIMES AND RAISE ANY CONCERNS WITH THE ENVIRONMENTAL TEAM.
EXCLUSION ZONES TO BE USED ON SITE EXCEPT IN DESIGNATED AREAS OR FREE PPE AREA.

Environmental Impacts	Mitigation Measure
Damping down	Damping down (especially when carrying out activities like breaking concrete obstructions or drilling).
Acoustic blankets	Acoustic blankets to be implemented during noisy activities where possible.
Waste segregation	Waste segregation to be implemented. Waste hierarchy to be followed. Duty of care to be followed (in doubt call the environmental lead - Katy)
COSHH	Ensure all COSHH waste is correctly disposed of in the facilities available. COSHH store is locked when not in use and a spill kit in its proximity.

5 Quality essentials for all

1. Information & Understanding.
2. Resource – People - Material - Tools & Equipment.
3. Samples & Benchmarks.
4. Finish - Install-Inspect - Protect & Respect.
5. Commission & Complete.

Employees Duties: Seek everybody's co-operation to keep themselves and their colleagues safe by:

- a) Complying with these instructions including COVID-19 Guide lines and Procedures
- b) Immediately reporting any unsafe conditions to their supervisor, as they arise
- c) Telling their Supervisor if they have any doubts in their ability to carry out an instructed task

Part 2 – Authorization & Briefing given by:

Originator: A. APETRI LOR
Print Name & Company: Approval Signature: 17.09.20
Date:

Daily Activity Briefing Sheet Rev 1.0 Page 2 of 6

Barge Movements

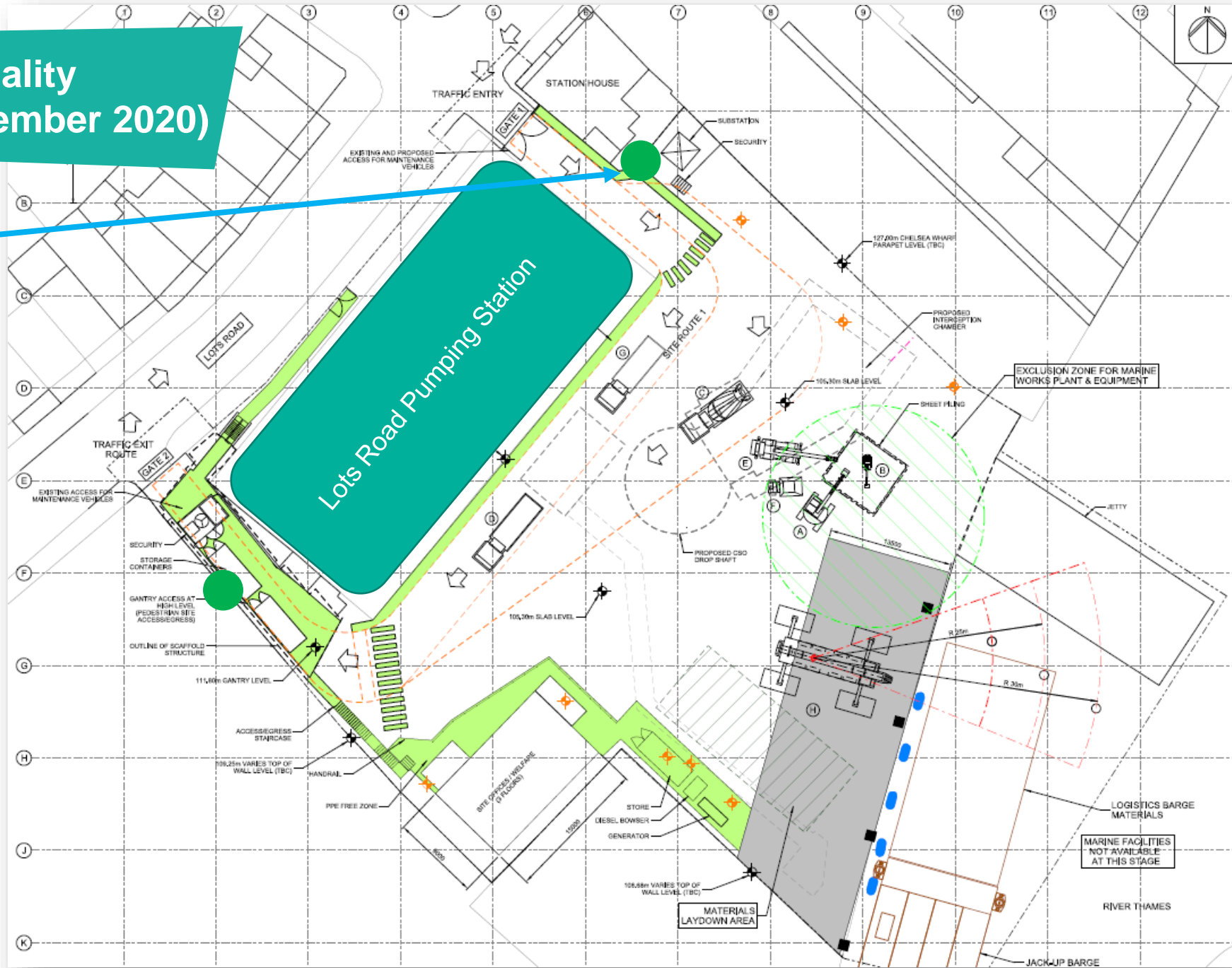
- Barge movements started on 20 January 2020
- Excavated 19,641 tonnes from shaft and tunnels
- 89 Barges have removed spoil from site so far
- Removing 1,091 vehicle movements from the road (based on an average 18 tonne load)
- Completed first phase of barge movements on 6 November 2020.
- Next phase will start early 2021 for the excavation phase of the interception chamber.



Cremorne Wharf Depot Air Quality Monitoring (September – November 2020)

Air Quality Monitor

Air Quality Exceedances:
10 Exceedances



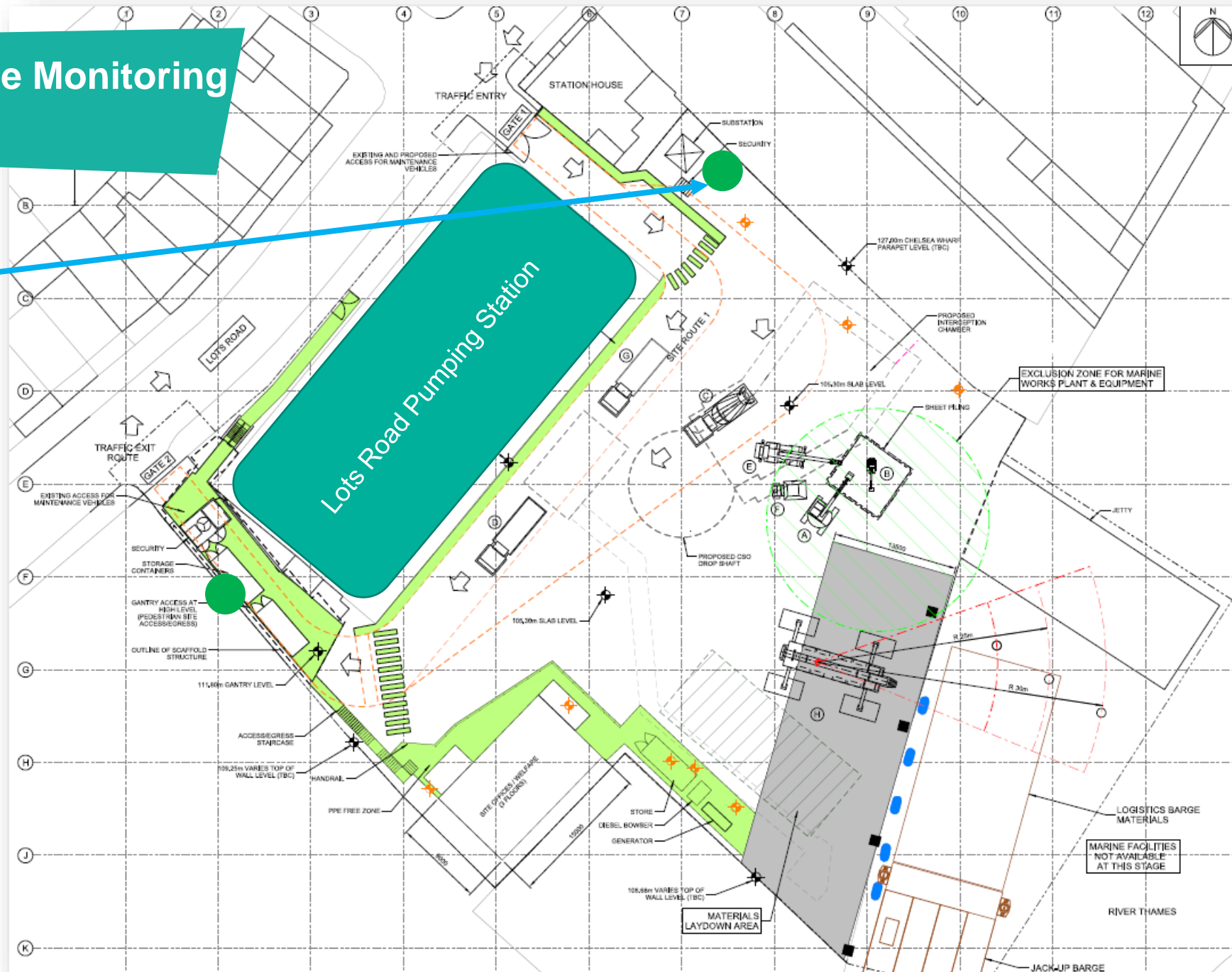
Cremorne Wharf Depot Air Quality Monitoring (September – November 2020)

1 st September	3 exceedances	The Interception Chamber at CREWD is being excavated with muck away HGVs in attendance. The activity is being attended periodically by a road sweeper but yesterdays dry weather caused the exceedances. After the muck away operations were complete for the day no more exceedances where observed.
2 nd September	1 exceedance	The Interception Chamber at CREWD is being excavated with muck away HGVs in attendance. The activity is being attended periodically by a road sweeper but yesterdays dry weather caused the exceedances. After the muck away operations were complete for the day no more exceedances where observed.
9 th September	1 exceedance	The Interception Chamber at CREWD is being excavated with muck away HGVs in attendance. The activity is being attended periodically by a road sweeper.
10 th September	2 exceedances	The Interception Chamber at CREWD is being excavated with muck away HGVs in attendance. In addition, there was a small area that required concrete breakout. The activity is being attended periodically by a road sweeper.
11 th September	1 exceedance	The road sweeper attended site at this time, causing an upsurge of dust.
14 th September	1 exceedance	The Interception Chamber at CREWD is being excavated with muck away HGVs in attendance. The activity is being attended periodically by a road sweeper.
2 nd October	1 exceedance	At the time of the exceedance, there was heavy rainfall resulting in site being extremely wet. Therefore, the monitor may not have picked up on dust particles but large water particles instead. No dust was seen on site.

Cremorne Wharf Depot Noise Monitoring

Noise
Monitor

Noise Exceedances:
8 Exceedances



Cremorne Wharf Depot

Noise Data: Sep - Nov 2020

22 nd September	3 exceedances	Silt removal – tanker located beside the noise monitor.
1 st October	2 exceedances	Silt removal – tanker located beside the noise monitor. Asked to reconsider using the tanker at night time.
16 th November	1 exceedance	The SCL on site was completed this date with the SCL gang demobilising. As a result, the electric compressor they had used previously was removed from site during the day shift and therefore they had to use the diesel compressor which was located in closer proximity to the noise monitor.
18 th November	1 exceedance	Cause unknown but not construction related
26 th November	1 exceedance	Cause unknown but not construction related

No complaints received in relation to these exceedances.

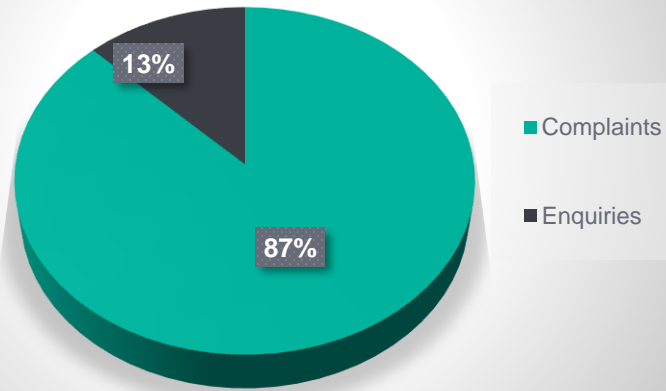


COMMUNITY ENGAGEMENT UPDATE

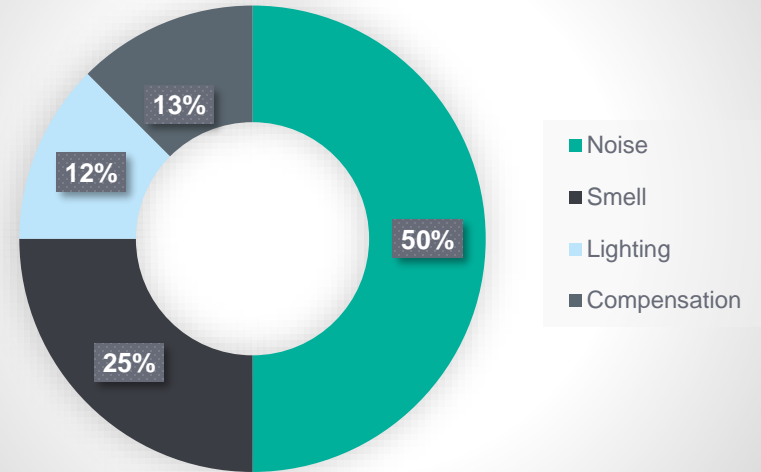
Alick Whitfield
Community Relations Manager

Complaints and Enquiries

Cremorne Wharf Depot Complaints & Enquiries Sept – Dec 2020



Cremorne Wharf Depot Complaints



Complaints (7) & Enquiries (1):

- Noise
- Smell
- Lighting
- Compensation

Compensation and Mitigation

How to make a claim if you are affected by Tideway's work

Who do I go to for advice?

- Independent Advisory Service (IAS) Helpline for independent advice: **0800 917 8845** or info@tidewayias.co.uk
- Tideway's Compensation and Mitigation Lead, Louise Walsh, for personal assistance and advice: via Tideway Helpdesk **08000 30 80 80** or helpdesk@tideway.london or direct **07971 077165** or louise.walsh@tideway.london

How do I submit my claim?

- Louise can submit your claim to the Independent Compensation Panel (ICP) on your behalf or
- You can submit your claim direct to the ICP: admin@tidewayicp.london
- The IAS can send you a claim form, or you can download a claim form off the Tideway website

Any other business

Contact details:

- **Information helpline: 08000 30 80 80**
- **helpdesk@tideway.london**



Tideway

RECONNECTING LONDON WITH THE RIVER THAMES

#SuperSewer

www.tideway.london