

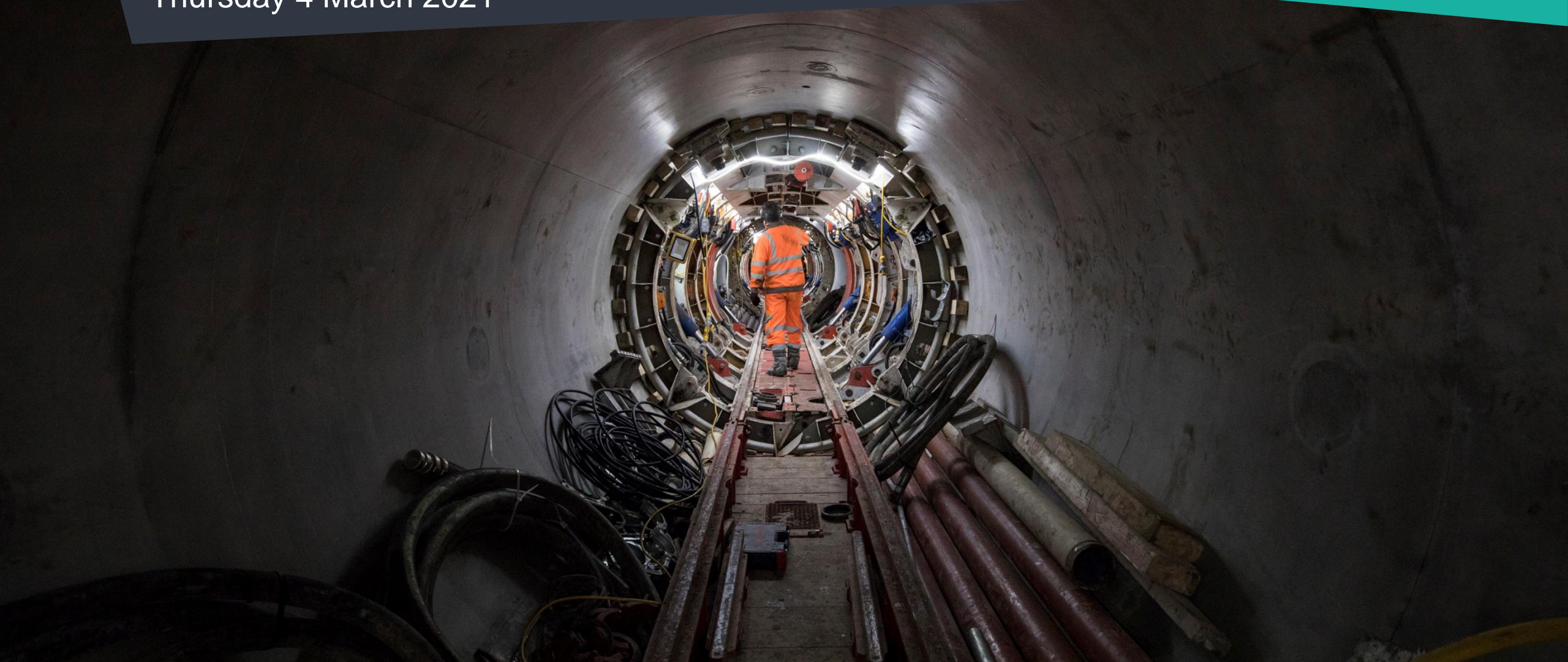
# DORMAY STREET & KING GEORGE'S PARK

Community Liaison Working Group

Thursday 4 March 2021




Tideway





**WELCOME**



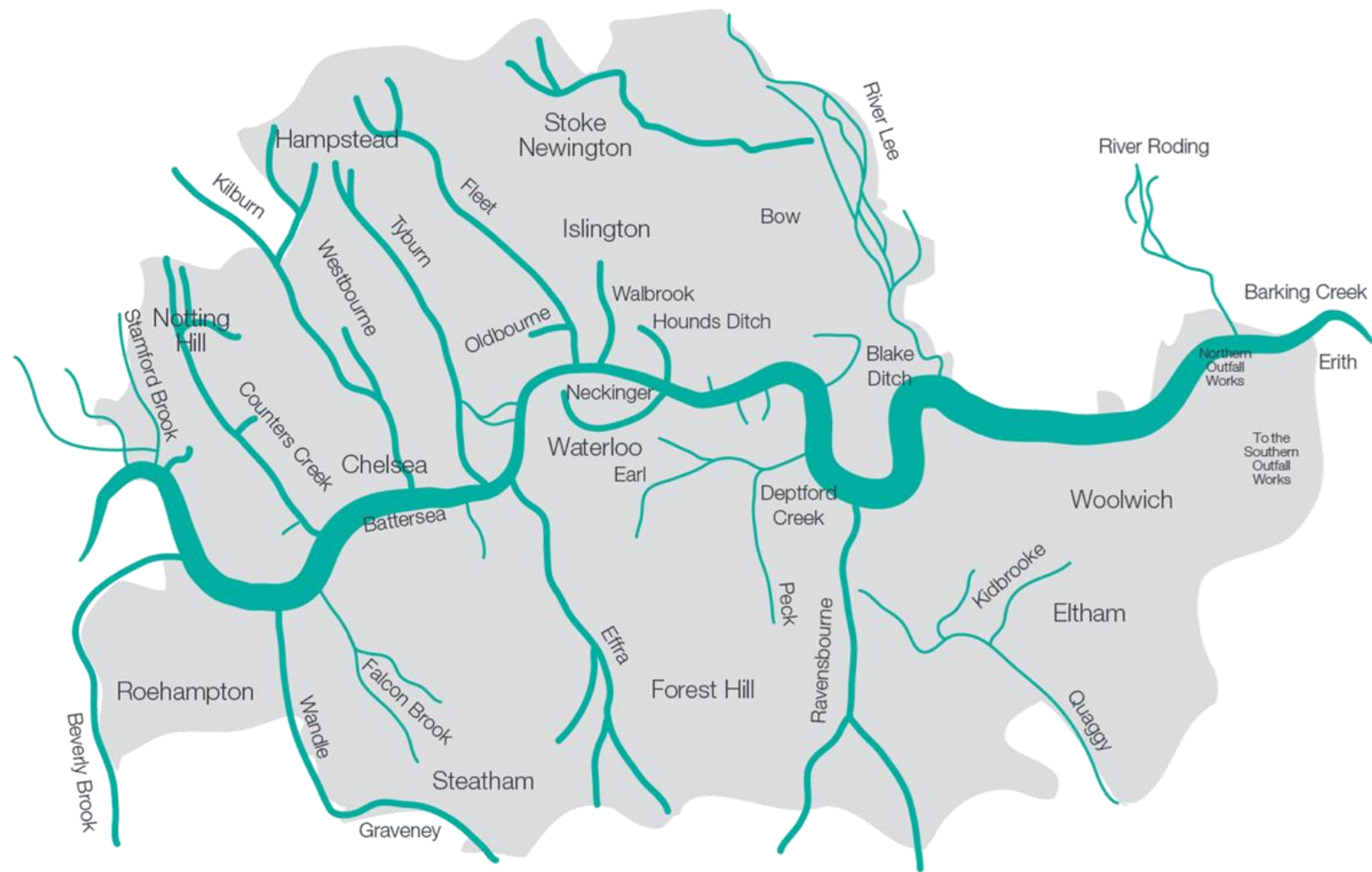
An aerial photograph of London at sunset. The River Thames flows through the center of the city, with the Tower Bridge prominently featured in the foreground. The city skyline is visible in the background, with numerous buildings and structures. The sky is a mix of orange and blue, indicating the time is either dawn or dusk. The overall scene captures the essence of London's urban landscape and its relationship with the river.

**Our challenge is to build a  
new sewer for London to  
prevent the frequent pollution  
of the river Thames**

**Our vision is to not just clean  
up the Thames but to  
promote a change in the  
relationship between London  
and Londoners and their river**



# Historic London



THE "SILENT HIGHWAY" - MAN.  
"Your MONEY or your LIFE!"

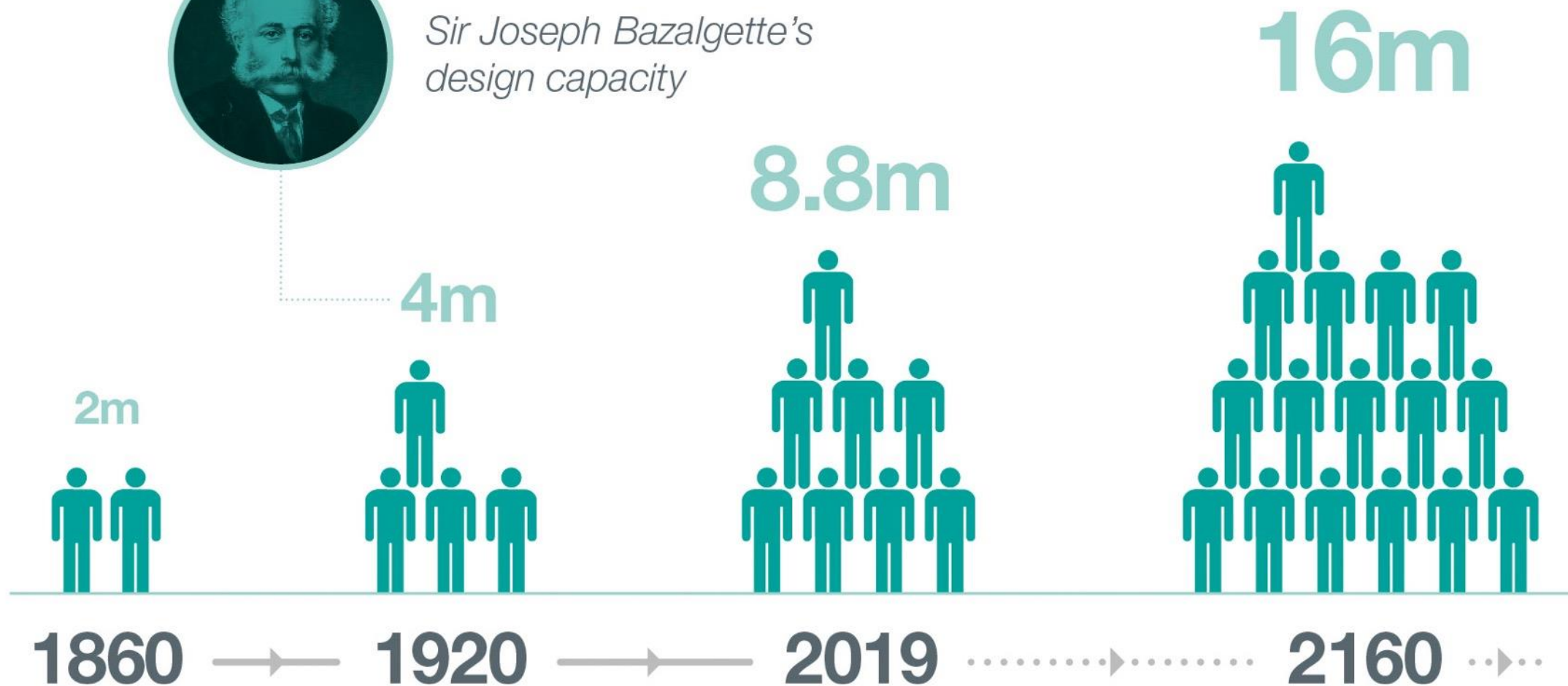




## Sir Joseph Bazalgette's system

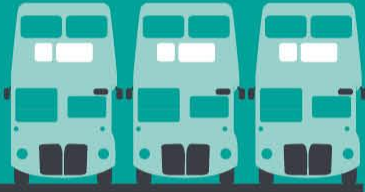


*Sir Joseph Bazalgette's  
design capacity*





7.2 METRES  
WIDE

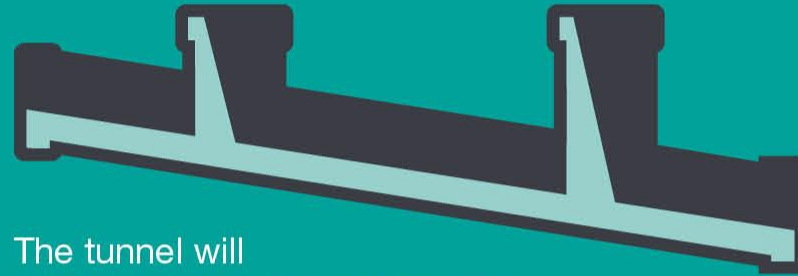


That's the same width as **three London buses** side-by-side.

31-66  
METRES  
DEEP

The minimum height of a 'high-rise' building is **35 metres**.

GOING WITH  
THE FLOW



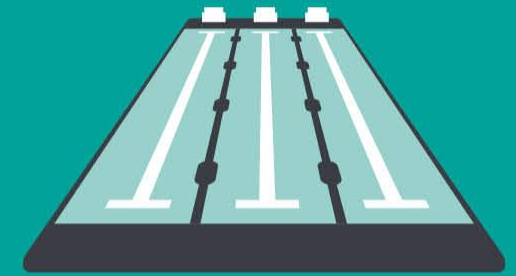
The tunnel will get **one metre deeper for every 790 metres of length**, meaning gravity will take the sewage eastwards.

25km LONG



It would take a car travelling at **40mph over half an hour** to drive down it.

1.6 MILLION  
CUBIC METRES  
PEAK CAPACITY



Together with the Lee Tunnel, the Thames Tideway Tunnel will be able to hold **1.6 million tonnes of sewage**, that's enough to fill **600 Olympic swimming pools**.



The tunnel will **cost £3.8bn** to build.





# TIDEWAY ROUTE MAP

## WEST SITES

- 1 Acton Storm Tanks
- 2 Hammersmith Pumping Station
- 3 Barn Elms
- 4 Putney Embankment Foreshore
- 5 Dormay Street
- 6 King George's Park
- 7 Carnwath Road Riverside

## CENTRAL SITES

- 8 Falconbrook Pumping Station
- 9 Cremorne Wharf Depot
- 10 Chelsea Embankment Foreshore
- 11 Kirtling Street
- 12 Heathwall Pumping Station
- 13 Albert Embankment Foreshore
- 14 Victoria Embankment Foreshore
- 15 Blackfriars Bridge Foreshore
- 16 Shad Thames Pumping Station

## EAST SITES

- 17 Chambers Wharf
- 18 Earl Pumping Station
- 19 Deptford Church Street
- 20 Greenwich Pumping Station
- 21 King Edward Memorial Park Foreshore
- 22 Bokesbourne Street
- 23 Abbey Mills Pumping Station
- 24 Beckton Sewage Treatment Works

## SITE TYPES

- West Central East
- Main tunnel drive site
- CSO site
- Main tunnel reception site
- System modifications
- Main tunnel (West)
- Main tunnel (Central)
- Main tunnel (East)
- Connection tunnels
- Lee Tunnel
- Proposed drive direction



## How the system works





# **FROGMORE CONNECTION TUNNEL**

**Kevin Dollard, Section Manager**

## Frogmore Connection Tunnel





## Works Update: September 2020 - October 2021

- Tunnelling setup at Dormay Street demobilised
- Dormay Street to Carnwath Road Launch chamber prepared for secondary lining and connection to shaft slipform



## Works Update: November 2020 - January 2021

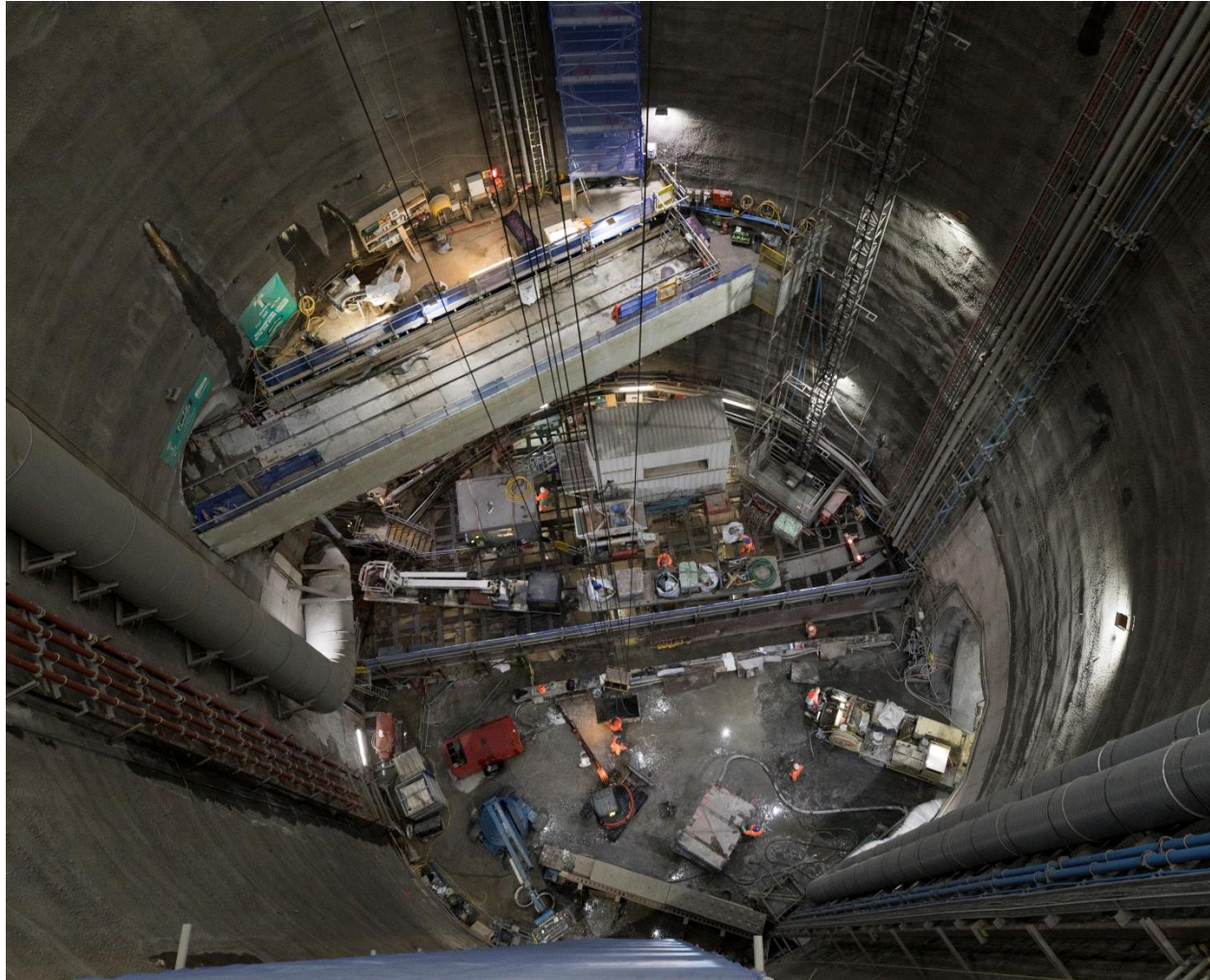
- Tunnel cleaned and prepared for secondary lining drive to Carnwath Road





## Works Update: January 2021

- Frogmore team mobilised in Carnwath Road Shaft and prepared Frogmore Connection Tunnel floating deck for Secondary Lining





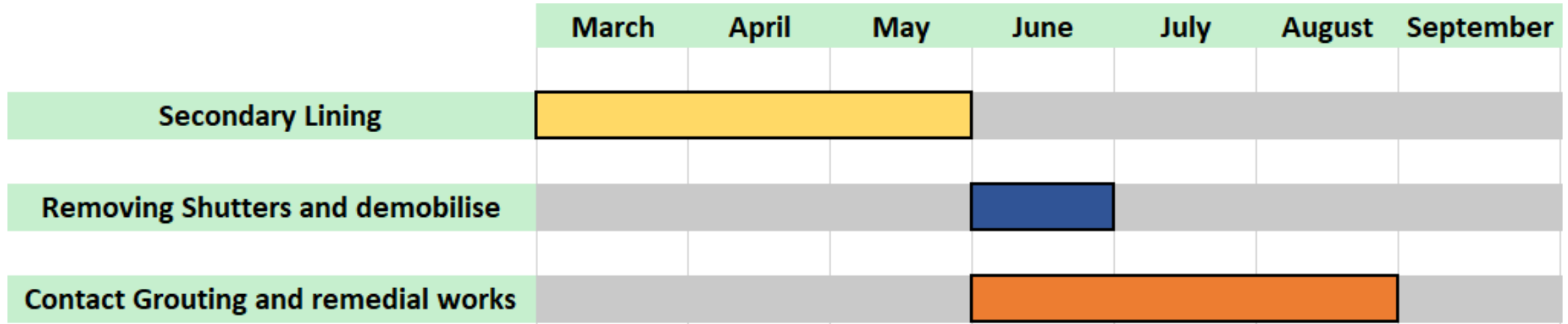
## Works Update: February 2021- March 2021

- Shutters moved into position and tunnel Secondary Lining commenced





## Look Ahead (next 6 months)



Core working hours 8am-6pm Monday – Friday and 8am-1pm Saturday. One hour start up and shut down periods either side of working hours



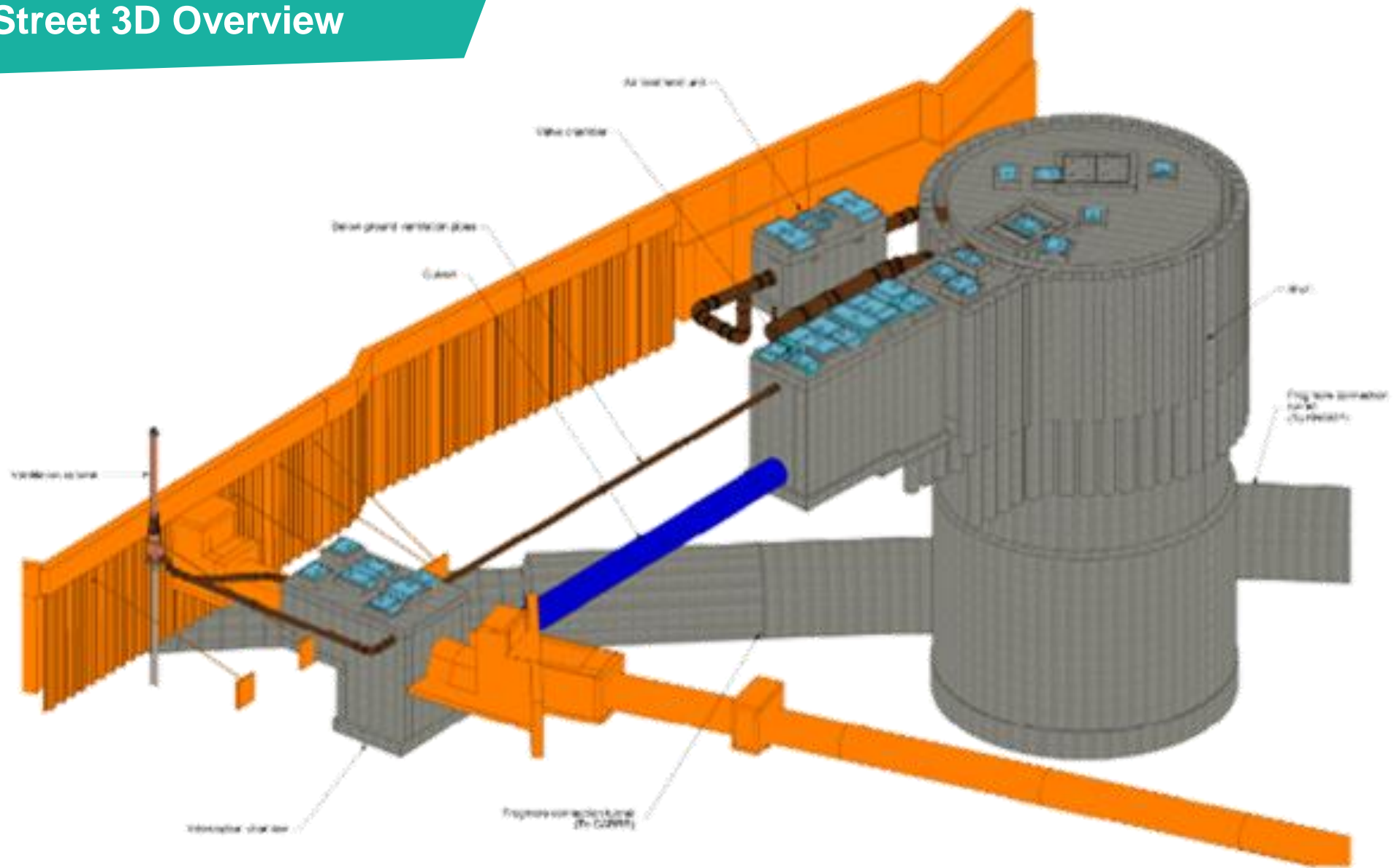


# **DORMAY STREET**

**Kevin Dollard, Section Manager**

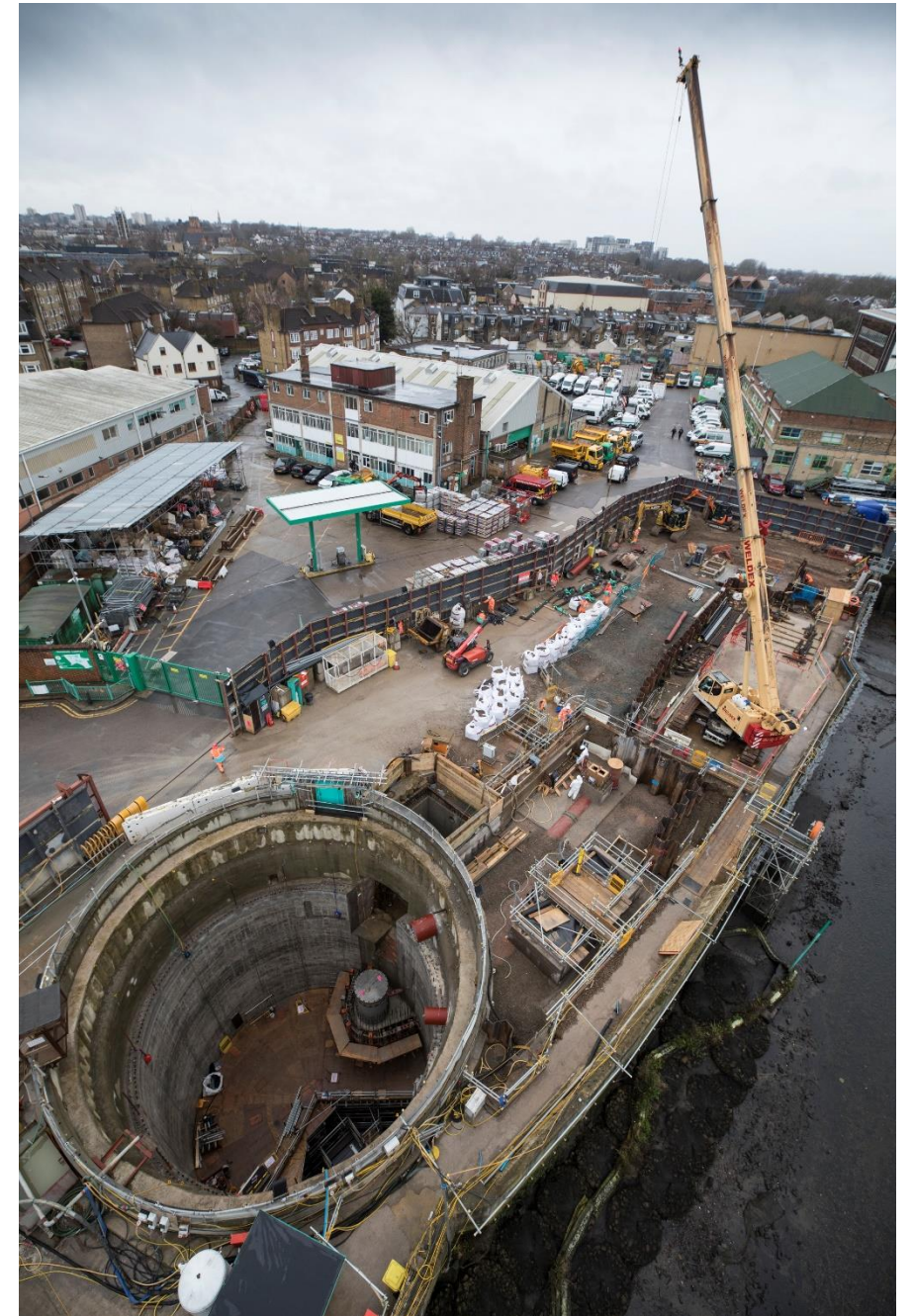


## Dormay Street 3D Overview





## Dormay Street Overview





## Works Update: September 2020 – March 2021

- Cofferdam extension piling and excavation complete
- Air treatment chamber and ventilation kiosk substructure complete





## Works Update: November 2020

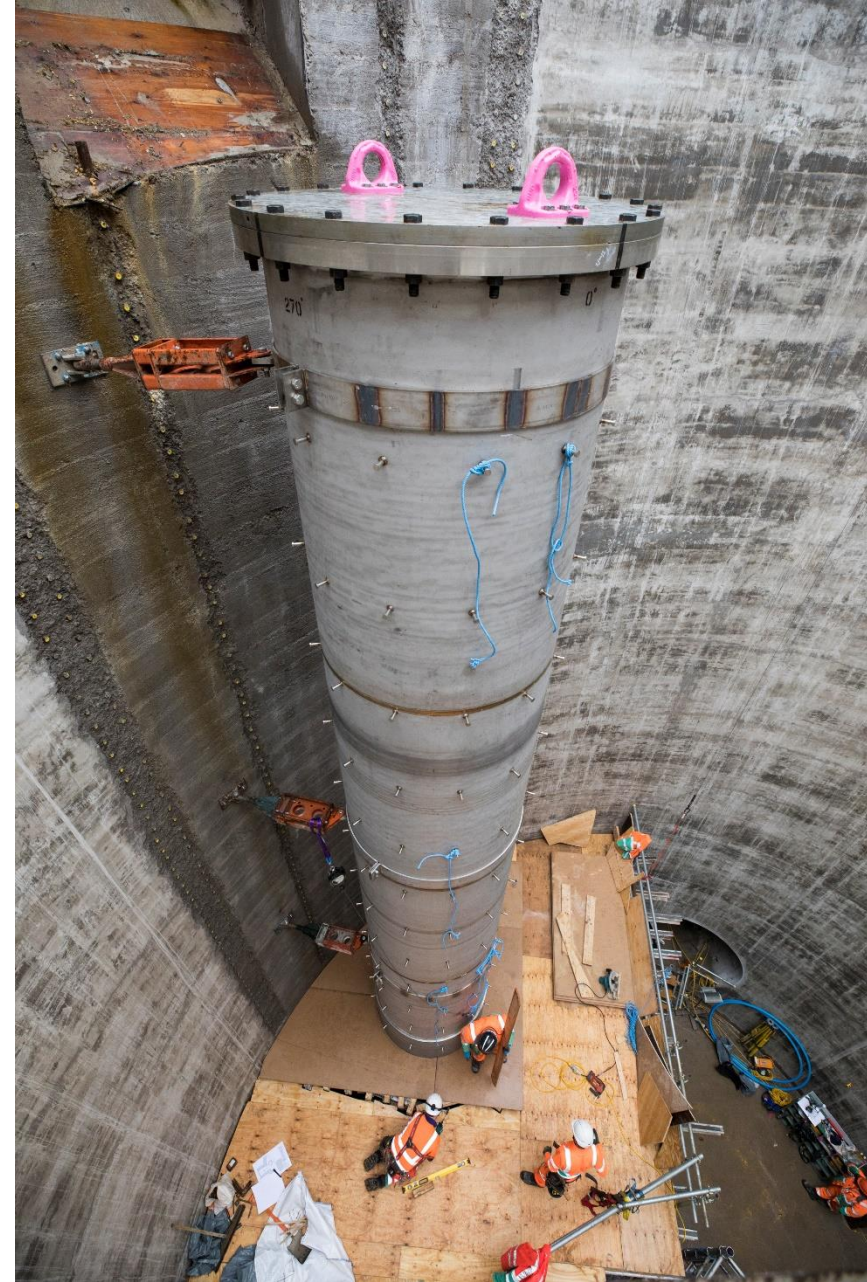
- Shaft Slipforming works completed
- Continuous concrete pour for one week



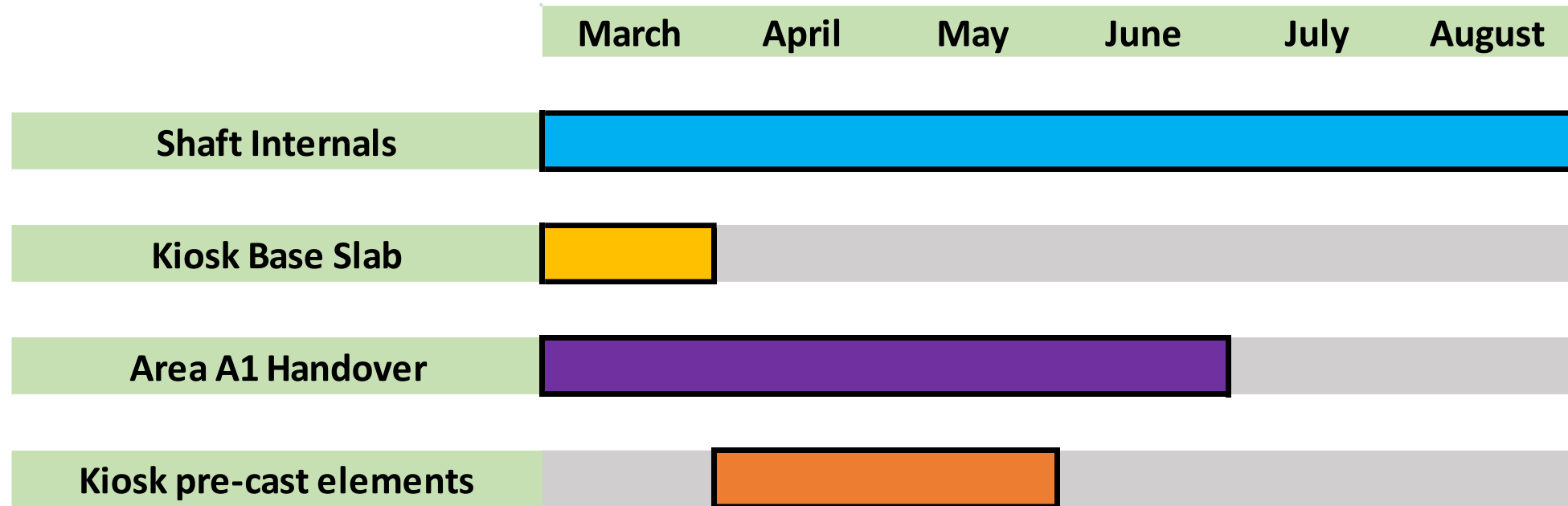


## Works Update: January 2021-February 2021

- Vortex drop tube installation
- Vortex encasement pours 4 out of 6 complete



## Look Ahead (next 6 months)



Core working hours 8am-6pm Monday – Friday and 8am-1pm Saturday. One hour start up and shut down periods either side of working hours

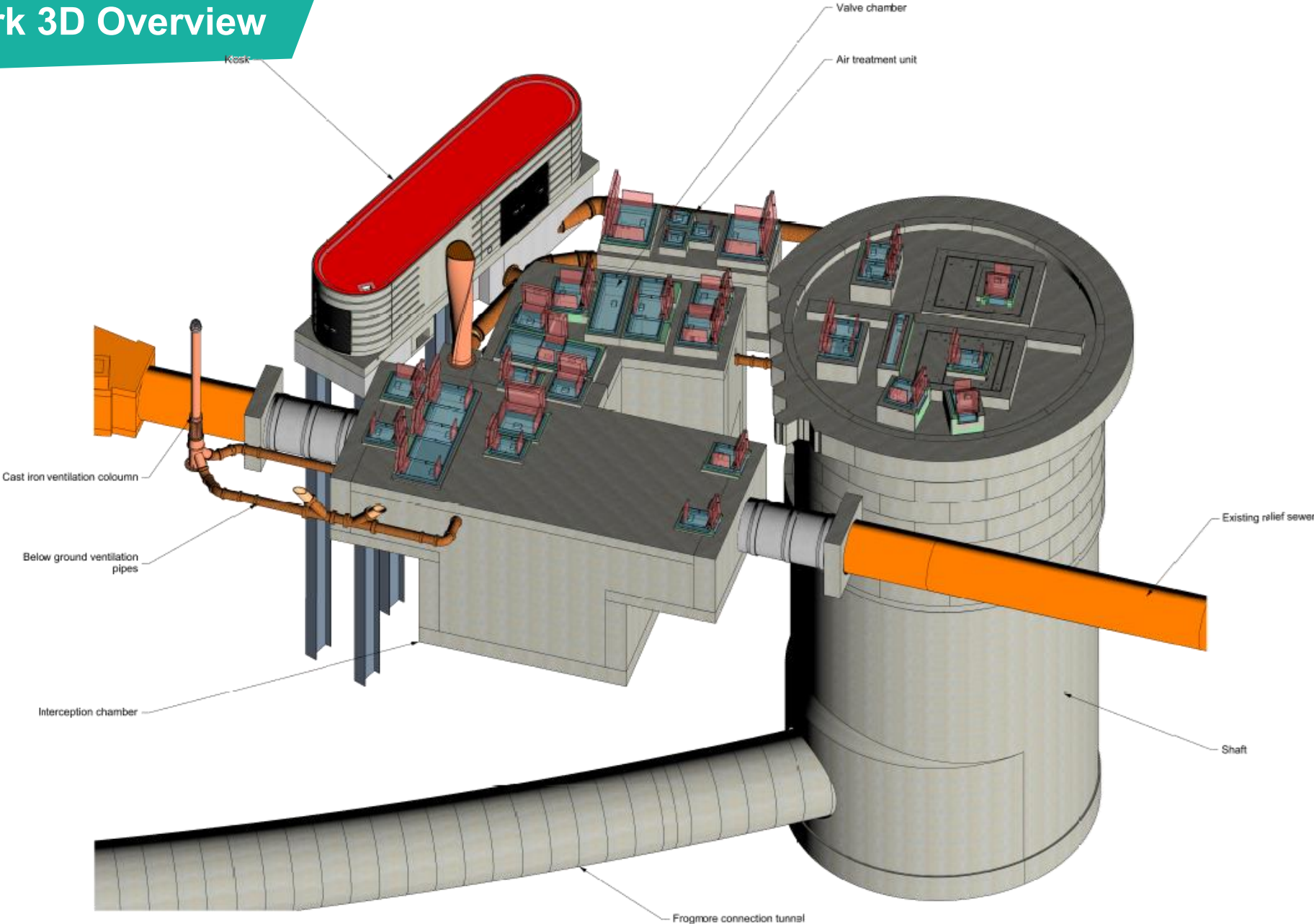


# **KING GEORGE'S PARK**

**Kevin Dollard, Section Manager**



# King George's Park 3D Overview





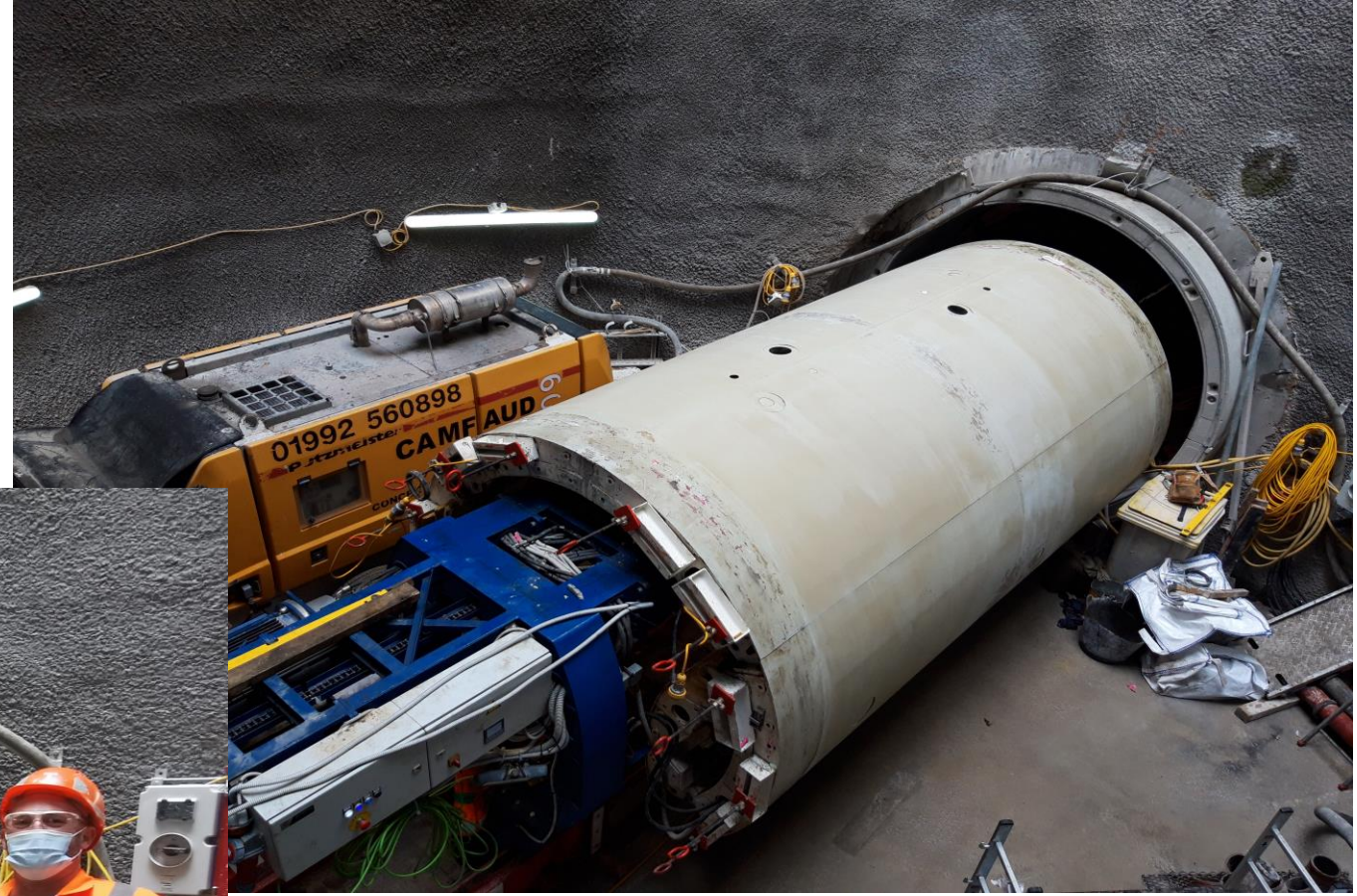
# King George's Park Overview





## Works Update: October 2020

- Completed Frogmore Connection Tunnel Secondary Lining from Dormay Street to King George's Park





## Works Update: November 2020

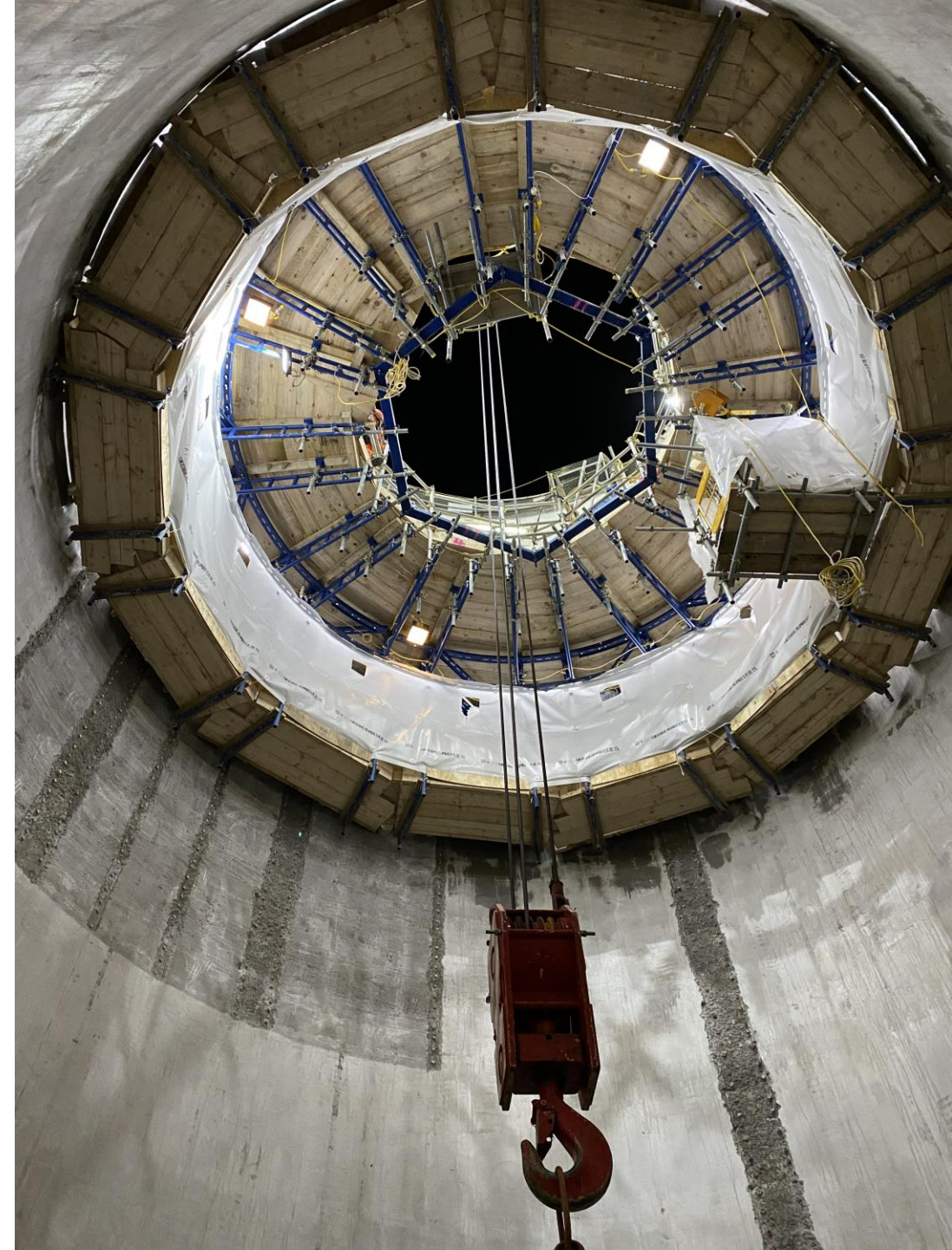
- Flume Modification Works
- Roof & Precast Wall Installation





## Works Update: November 2020

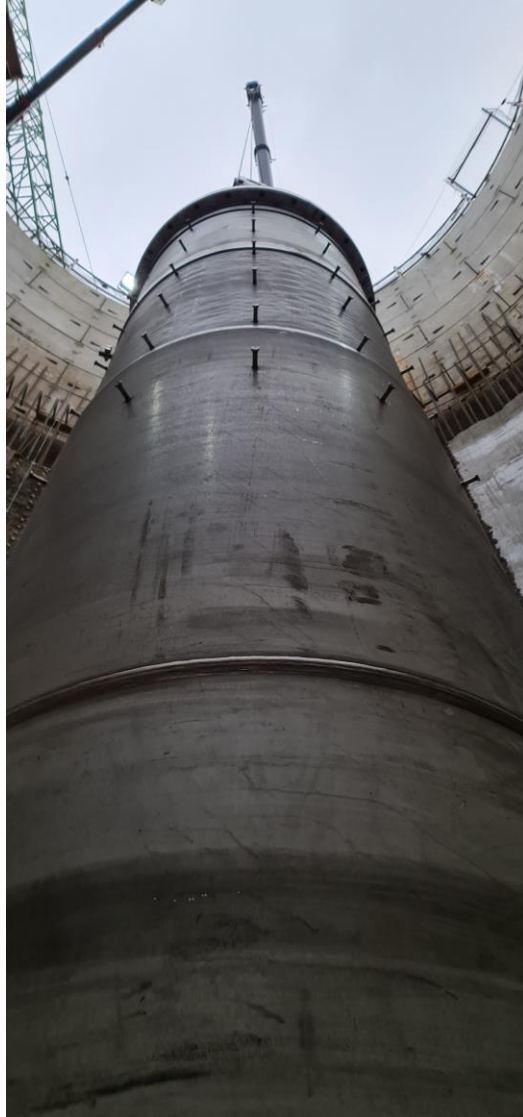
- Shaft Slipform Secondary Lining completed
- One continuous concrete pour for 5 days





## Works Update: December 2020

- Vortex Drop Tube installation completed





## Works Update: January to March 2021

- Shaft Internal Structures
  - Vortex Drop Tube Encasement
  - Walls & Central Column





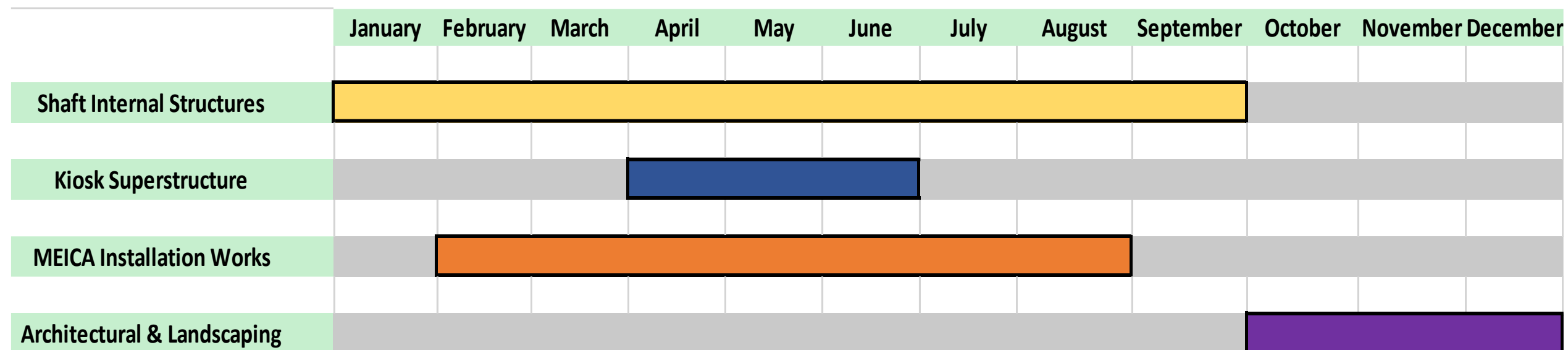
## Works Update: January to March 2021

- MEICA Works
  - Penstock Installation
  - Flap Valve Installation





## Look Ahead (next 6 months)



Core working hours 8am-6pm Monday – Friday and 8am-1pm Saturday. One hour start up and shut down periods either side of working hours.

Any working outside of standard working hours will be agreed with the local authority through a Section 61 consent, dispensation or variation and will be communicated to relevant stakeholders.



## Landscaping



- Design incorporates new public realm area, ventilation column/mechanical and electrical control room and hard/soft landscaping

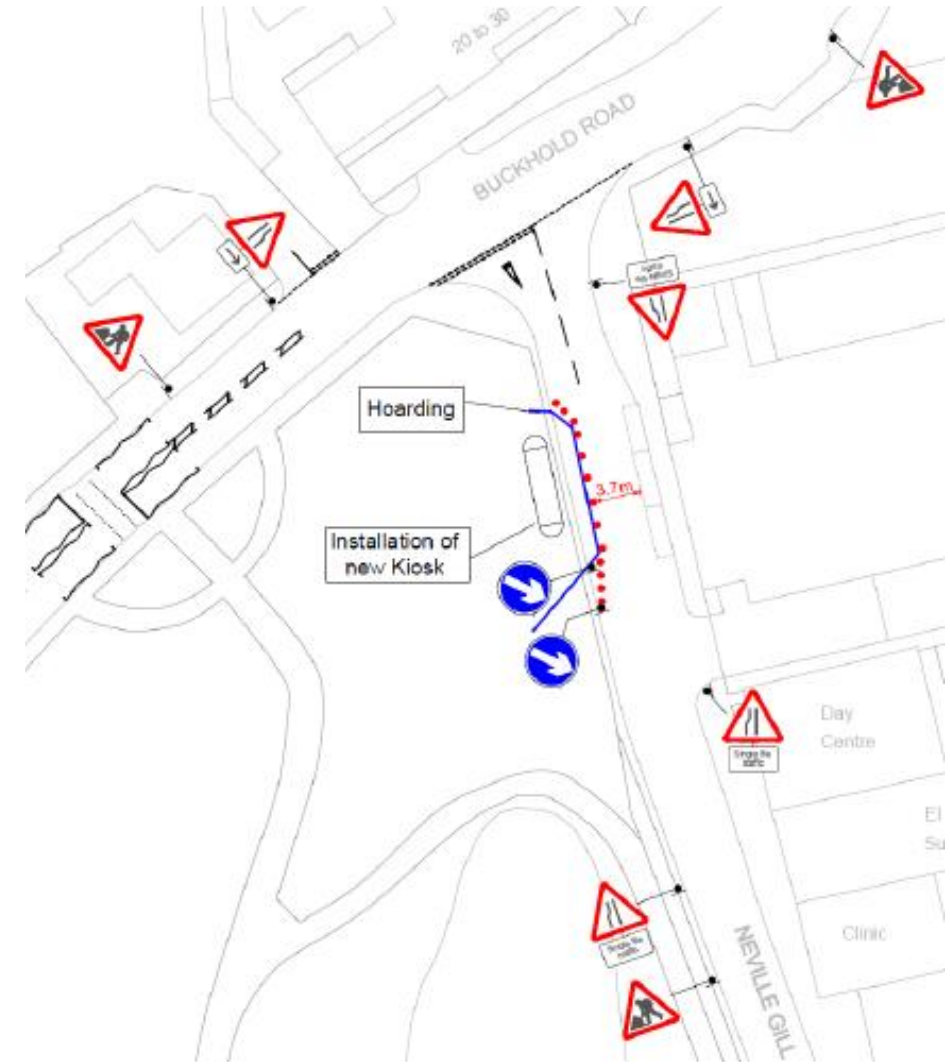
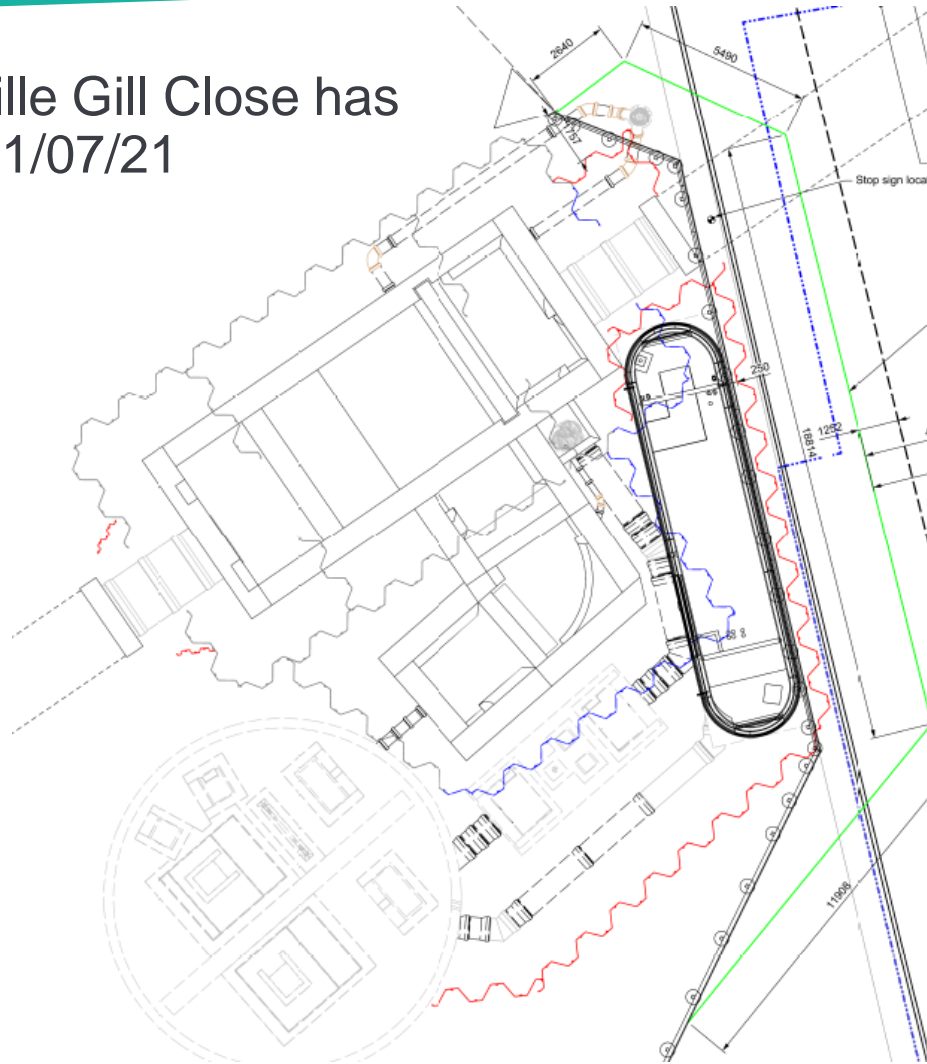
- Approved by London Borough of Wandsworth on 30 August 2019





## Mechanical & Electrical Control Room

- The closure of Neville Gill Close has been extended to 31/07/21



Area required for temporary works installation. Traffic management scheme in place to facilitate the construction of the mechanical and electrical control room.





# **COMMUNITY ENGAGEMENT**

**Katie Ashton, Communications Manager**



## Community Engagement

- 3 noise and vibration complaints and 5 general enquires received since last meeting for both Dormay Street and King George's Park
- 6 project information sheets have been issued since the last meeting:
  - 2 x abnormal loads
  - 2 x 24-hour working
  - 2 x Christmas shutdown

All enquiries have been responded to within 24 hours (where possible)



**Call:** 08000 30 80 80  
**Email:** [helpdesk@tideway.london](mailto:helpdesk@tideway.london)  
**Write to:** Freepost TIDEWAY



## How To Make A Claim if Affected By Tideway's Work

### Who do I go to for advice?

Independent Advisory Service (IAS) Helpline for independent advice:

- 0800 917 8845 or [info@tidewayias.co.uk](mailto:info@tidewayias.co.uk)
- Tideway's Compensation & Mitigation Lead, Louise Walsh, for personal assistance and advice
  - Helpdesk: 08000 30 80 80 / [helpdesk@tideway.london](mailto:helpdesk@tideway.london) or
  - Direct: 07971 077165 / [louise.walsh@tideway.london](mailto:louise.walsh@tideway.london)

### How do I submit my claim?

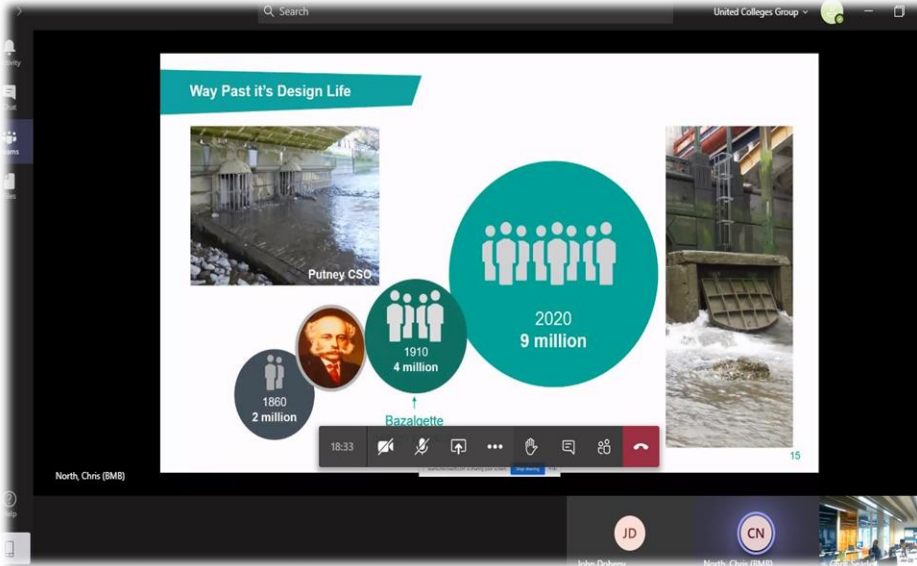
Louise can submit your claim to the Independent Compensation Panel (ICP) on your behalf, or you can submit your claim direct to the ICP: [admin@tidewayicp.london](mailto:admin@tidewayicp.london)

The IAS can send you a claim form, or you can download the form off the Tideway website: [www.tideway.london/help-advice/compensation-information/Independent-Compensation-Panel](http://www.tideway.london/help-advice/compensation-information/Independent-Compensation-Panel)



# Community Investment

- Our community investment activities are continuing when we are able to undertake them safely
- Please contact us if you are aware of an opportunity or community group that we could help





## How To Stay Up To Date

### INFORMATION SHEET

Ref : 2140-TDWAY-TTUN-990-ZZ-Report-700004  
March 2020



#### Information Sheets

### ACTON STORM TANKS

Community Liaison Working Group  
Tuesday 4 February 2020



#### Community Liaison Working Group Meeting's



#### Quarterly Newsletter



#### Monthly 'Virtual Drop-In' Every First Tuesday

Follow us on social media:  
**@TidewayLondon**



[en-gb.facebook.com/TidewayLondon/](https://en-gb.facebook.com/TidewayLondon/)



[www.instagram.com/tidewaylondon/](https://www.instagram.com/tidewaylondon/)



[www.linkedin.com/company/tideway-london/](https://www.linkedin.com/company/tideway-london/)



[twitter.com/TidewayLondon](https://twitter.com/TidewayLondon)

If you would like to be added to our mailing list for works updates/notifications, email [Helpdesk@Tideway.London](mailto:Helpdesk@Tideway.London)





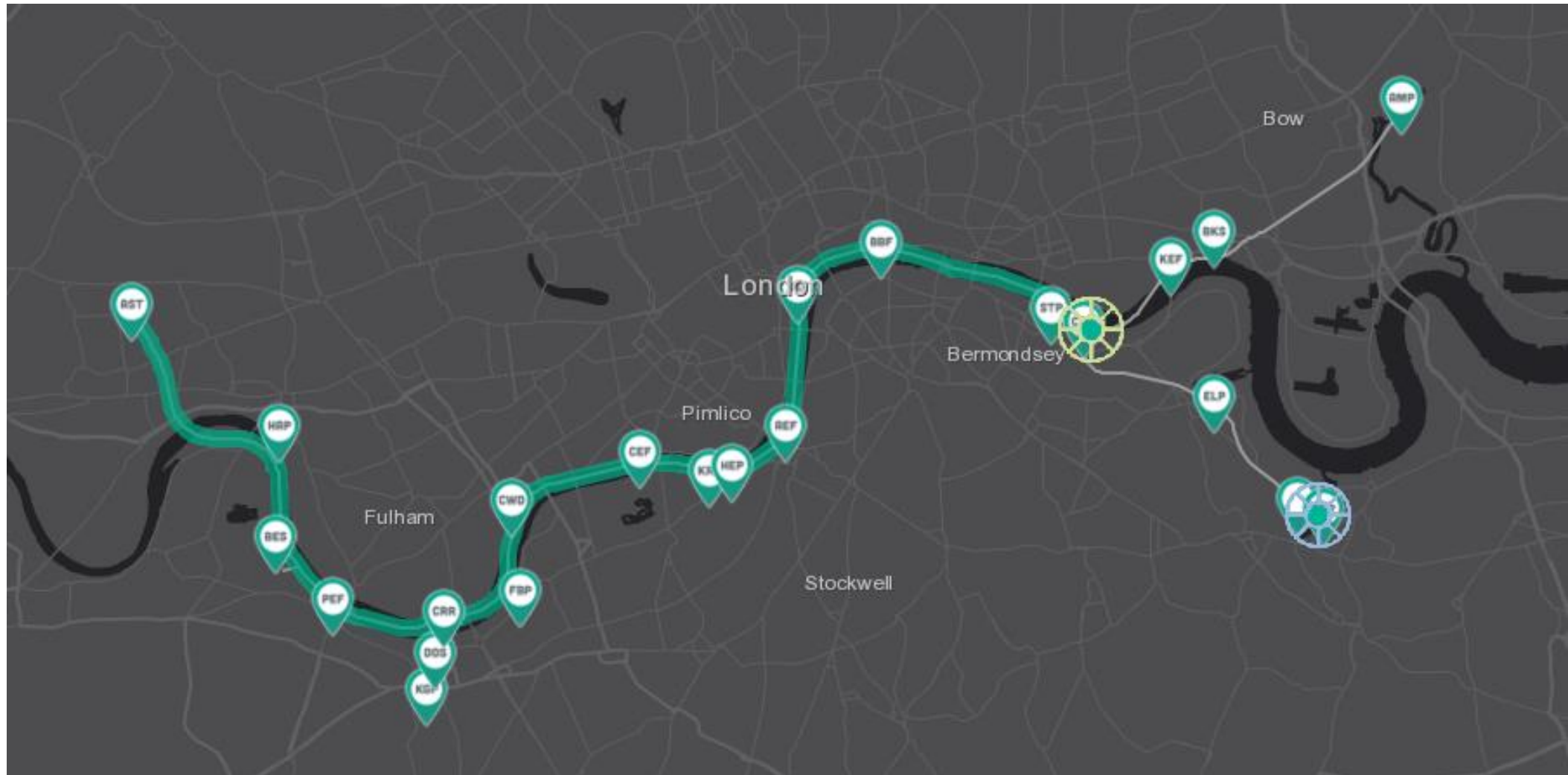
# OVERALL PROJECT UPDATE

**Andeep Gehlot, Communications Lead (West)**



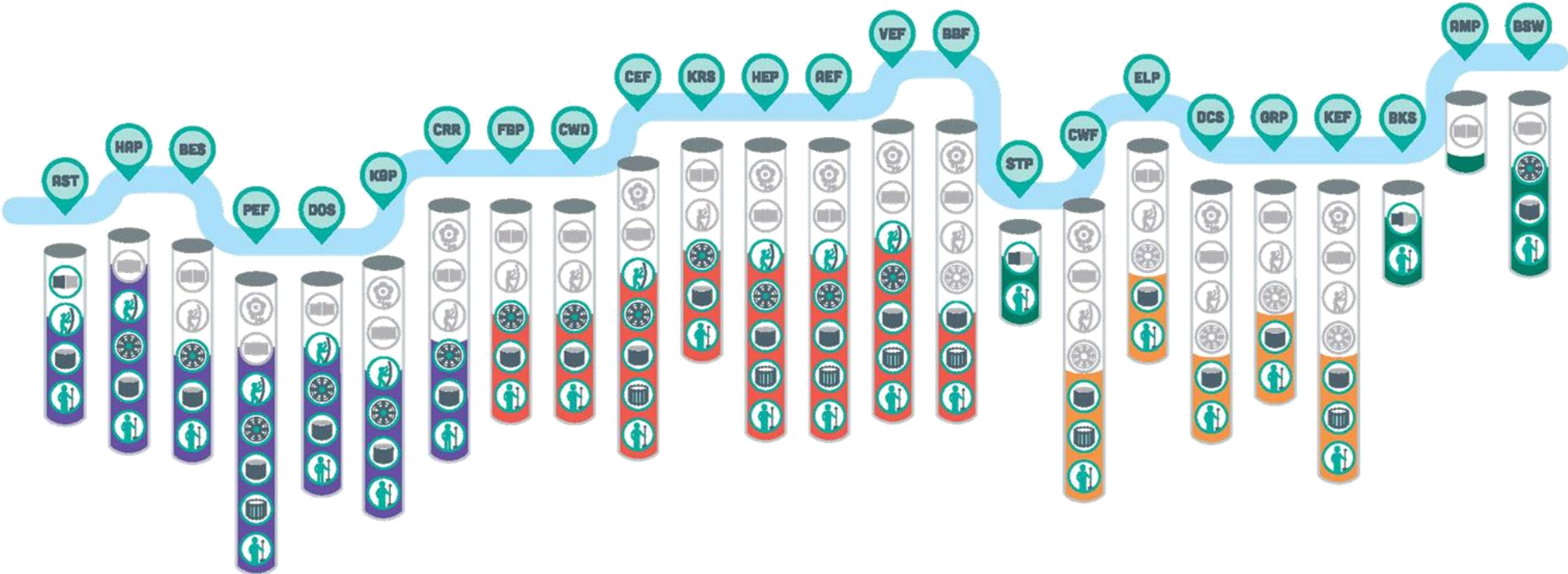
## Where is Rachel?

The Tideway TBM Tracker <https://www.tideway.london/tbm-tracker/>



# BUILDING THE SUPER SEWER

Autumn 2020



KEY

- Site Preparation
  - Cofferdam Built
  - Shaft Construction
  - Tunnelling
  - Secondary Lining
  - Sewer Connections
  - Public Realm
- West Sites Central Sites East Sites Thames Water Sites



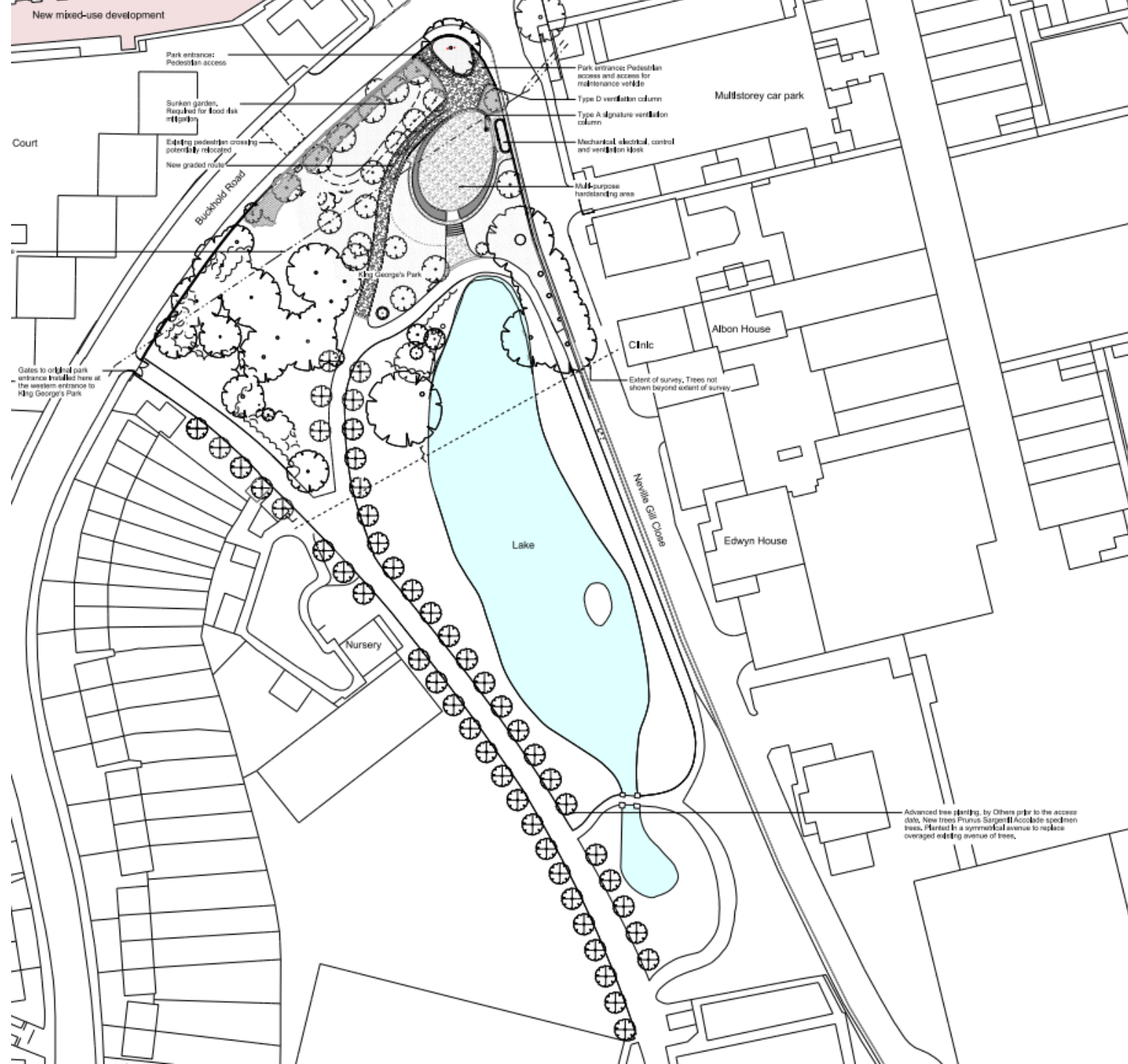


**QUESTIONS?**

# **LANDSCAPING AT KING GEORGE'S PARK**

**Tim Heading, AAJV Landscape and Architectural Lead**











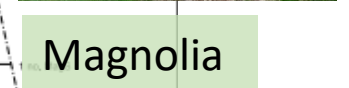
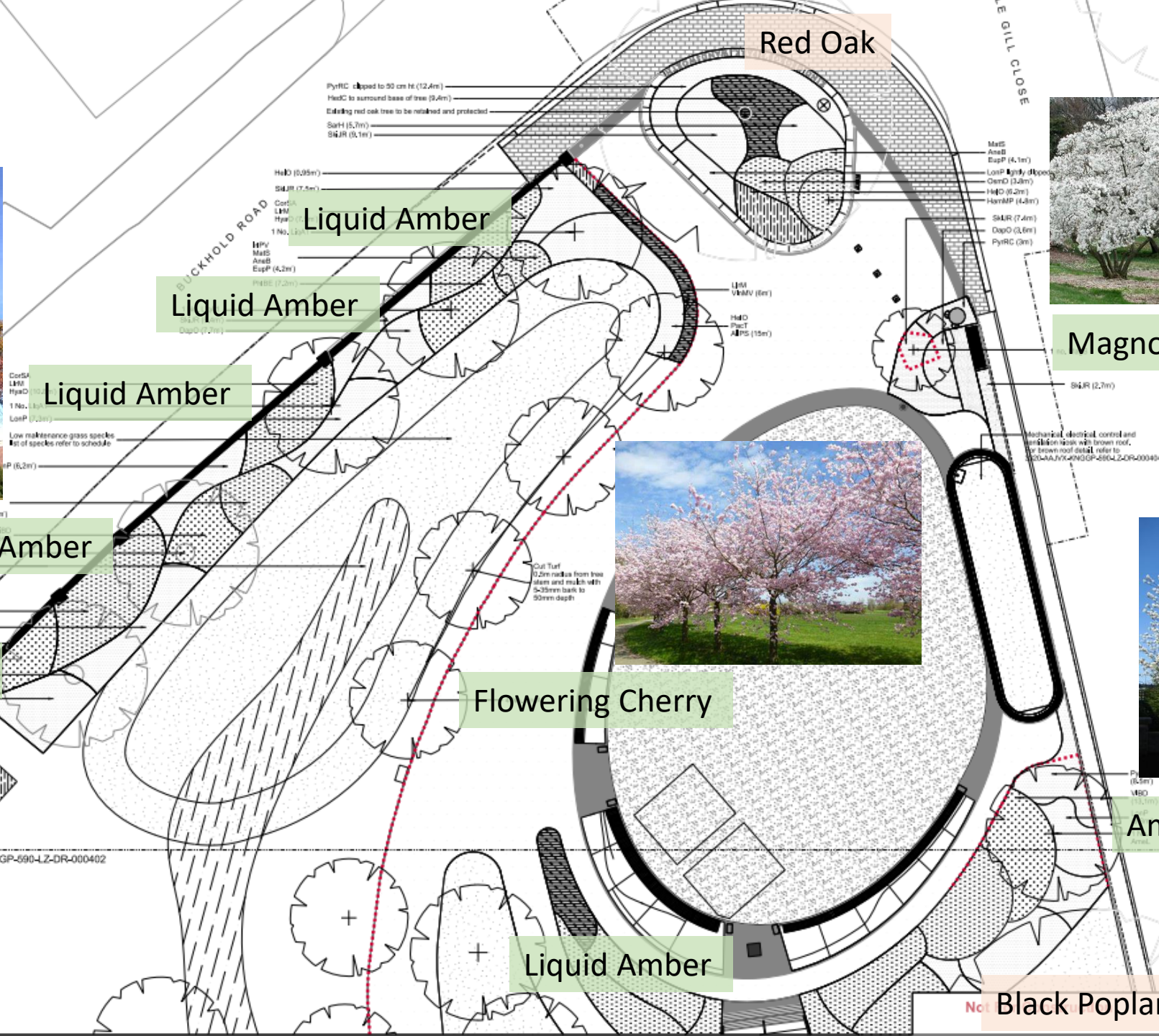
August 2020







Code	Name	Common Name
AlnG	<i>Alnus glutinosa</i> Imperialis	Cut-leaved Alder
LiqG	<i>Liquidambar styraciflua</i>	Sweet Gum
MagnG	<i>Magnolia 'Susan'</i>	Magnolia
PrusF	<i>Prunus avocetoides</i>	Flowering Cherry



## Liquid Amber

# Tree Planting Proposals

## Black Poplar



design or planning construction work.  
 Note: (2) These notes are based on the use of experienced and  
 competent contractors carrying out the work using an approved safe  
 method of working.

**Species List**  
 Refer to Plant Schedule drawing no. 3320-AA/VX-KNGGP-590-LZ-DR-000405 for full specification.

Code	Name	Common Name
AlnG	Alnus glutinosa	Common Alder
LupA	Liquidambar st.	Liquid Amber
Magn	Magnolia 'Sax'	Magnolia
Prus	Prunus serotina	Black Cherry
Frax	Fraxinus excelsior	Common Ash
CorSA	Coronilla varia	Common Dogwood
Daph	Daphne odora	Winter Daphne
Heli	Helleborus viridis	Green Hellebore
Lonic	Lonicera xylosteum	Common Honeysuckle
OsmD	Osmunda cinnamomea	Common Osmunda
Phil	Philadelphus	Mock Orange
Prus	Prunus laurocerasus	Laurel
Pyra	Pyracantha	Firethorn
SorH	Sorbus domestica	Domestic Sorbus
Skim	Skimmia	Skimmia
Wick	Witch Hazel	Witch Hazel
Yucc	Yucca filamentosa	Common Yucca
Ham	Hamamelis mollis	Witch Ham
EupH	Euphorbia	Euphorbia
HedC	Hedera ciliata	Common Ivy
Heli	Helleborus	Hellebore
HemF	Hemerocallis	Day Lily
IrPV	Iris pallida	Pale Iris
KuR	Koeleria	Blue Lily
LilM	Lilium	Lily
Pach	Pachysandra	Japanese Spurge
Prim	Primula	Primrose
Viola	Viola	Viola
Alph	Alchemilla	Alchemilla
Anem	Anemone	Anemone
Gale	Gaillardia	Gaillardia
Hyac	Hyacinthus	Hyacinth
Narc	Narcissus	Narcissus
MatS	Matthiola	Matthiola

Skimmia  
 Viburnum  
 Dogwood  
 Hellebore  
 Mock Orange  
 Iris  
 Fern  
 Wood  
 Anemone  
 Spurge

Grass with  
 Primrose  
 Narcissus  
 Snowdrop

Liquid Amber

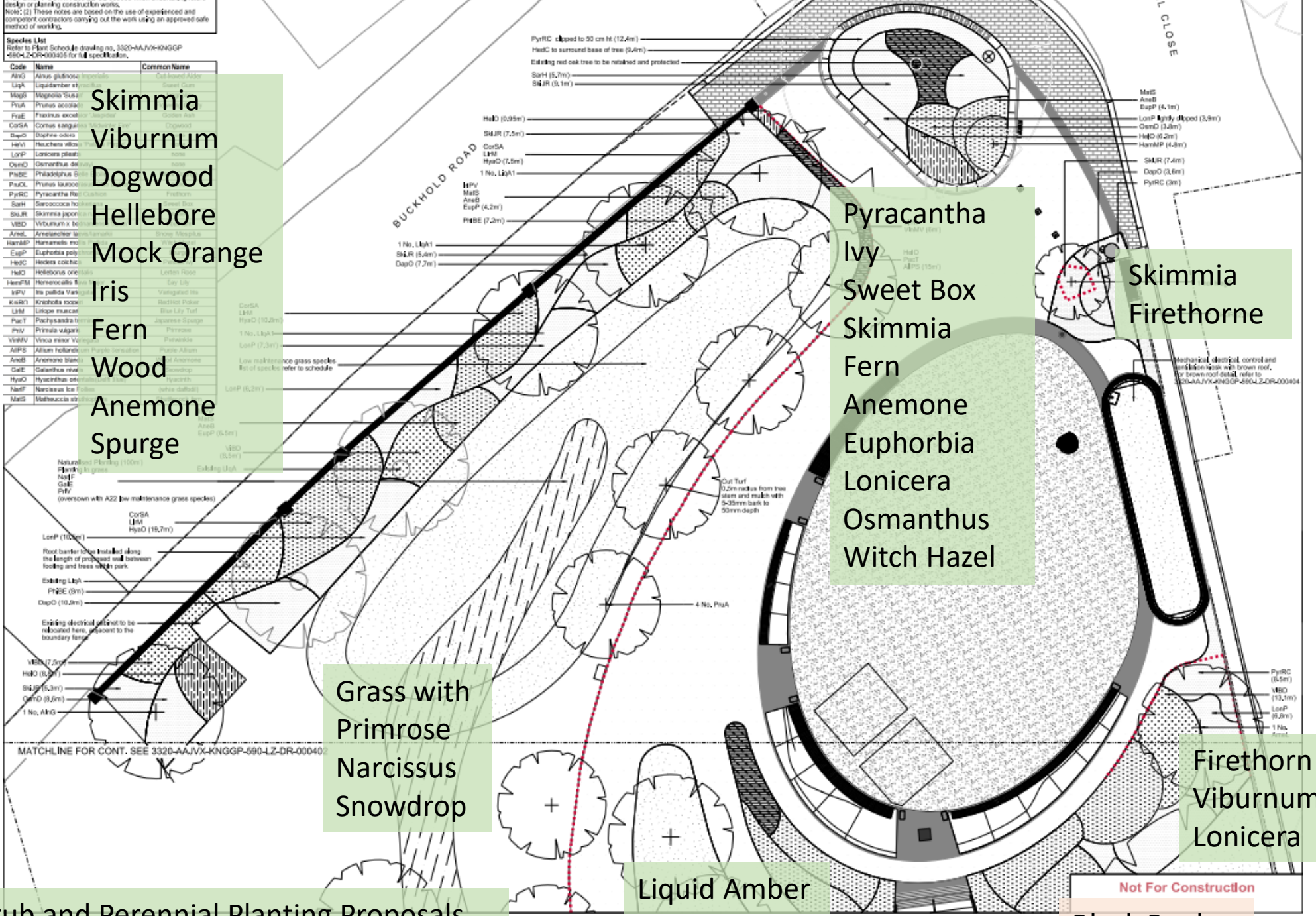
Pyracantha  
 Ivy  
 Sweet Box  
 Skimmia  
 Fern  
 Anemone  
 Euphorbia  
 Lonicera  
 Osmanthus  
 Witch Hazel

Skimmia  
 Firethorne

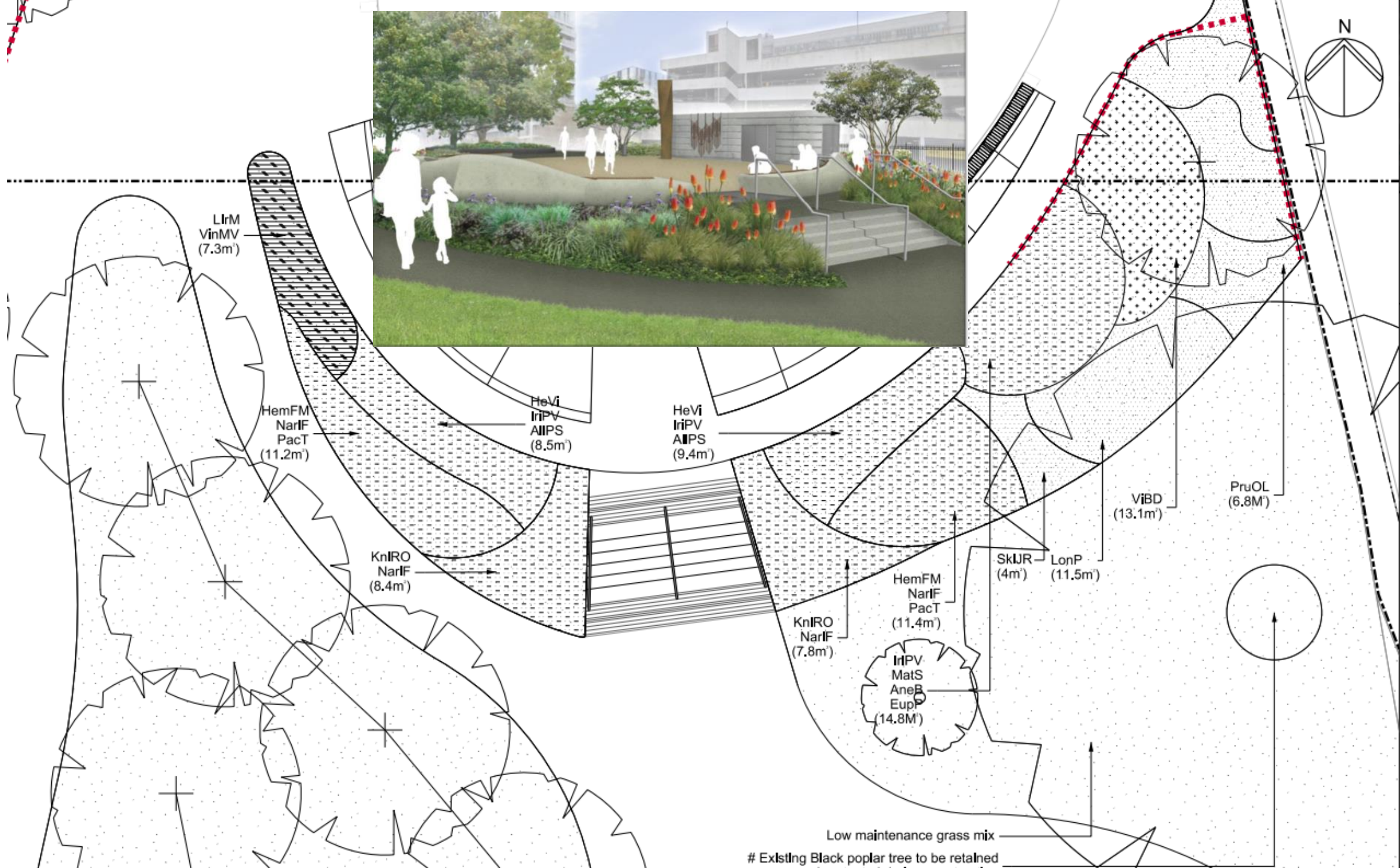
Firethorn  
 Viburnum  
 Lonicera

Shrub and Perennial Planting Proposals

Not For Construction  
 Black Poplar







Code	Name	Common Name
AlnG	<i>Alnus glutinosa</i> Imperialis	Cut-leaved Alder
LiqA	<i>Liquidamber styraciflua</i>	Sweet Gum
MagS	<i>Magnolia</i> 'Susan'	Magnolia
PruA	<i>Prunus accolade</i>	Flowering Cherry
FraE	<i>Fraxinus excelsior</i> 'Jaspidea'	Golden Ash
CorSA	<i>Cornus sanguinea</i> 'Midwinter Fire'	Dogwood
DapO	<i>Daphne odora</i>	none
HeVi	<i>Heuchera villosa</i> 'Palace Purple'	none
LonP	<i>Lonicera pileata</i>	none
OsmD	<i>Osmanthus delavayi</i>	none
PhiBE	<i>Philadelphus Belle Etoile</i>	Mock Orange
PruOL	<i>Prunus laurocerasus</i> Otto Luyken	none
PyrRC	<i>Pyracantha Red Cushion</i>	Firethorn
SarH	<i>Sarcoccoca hookeriana</i>	Sweet Box
SkiJR	<i>Skimmia japonica rubella</i>	none
VIBD	<i>Virburnum x bodnantense</i> 'Dawn'	Viburnum
AmeL	<i>Amelanchier laevis/lamarkii</i>	Snowy Mespilus
HamMP	<i>Hamamelis mollis</i> Pallida	Witch Hazel
EupP	<i>Euphorbia polychroma</i>	Spurge
HedC	<i>Hedera colchica</i>	Persian Ivy
HelO	<i>Helleborus orientalis</i>	Lenten Rose
HemFM	<i>emerocallis flava</i> Major	Day Lily
IriPV	<i>Iris pallida</i> Variegata	Variegated Iris
KniRO	<i>Kniphofia rooperi</i>	Red Hot Poker
LlrM	<i>Liriope muscari</i>	Blue Lily Turf
PacT	<i>Pachysandra terminalis</i>	Japanese Spurge
PriV	<i>Primula vulgaris</i>	Primrose
VinMV	<i>Vinca minor</i> Variegata	Periwinkle
AlPS	<i>Allium hollandicum</i> Purple Sensation	Purple Allium
AneB	<i>Anemone blanda</i>	Wood Anemone
GalE	<i>Galanthus nivalis</i>	Snowdrop
HyaO	<i>Hyacinthus orientalis</i> (Delft Blue)	Hyacinth
NarlF	<i>Narcissus</i> Ice Follies	(white daffodil)
MatS	<i>Matheuccia struthiopteris</i>	Shuttlecock fern





**QUESTIONS?**



**Tideway**

# **RECONNECTING LONDON WITH THE RIVER THAMES**

**#SuperSewer**

[www.tideway.london](http://www.tideway.london)