

CREMORNE WHARF DEPOT COMMUNITY LIAISON WORKING GROUP

16 March 2021



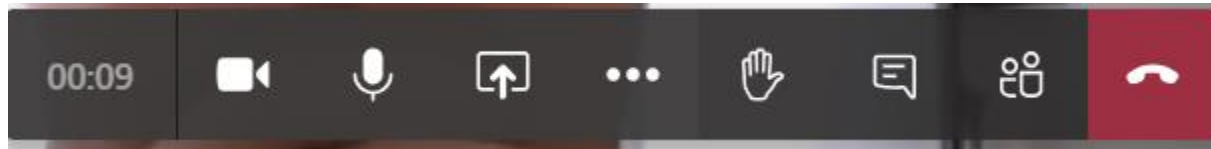
Tideway



Virtual CLWG

Welcome to our latest virtual CLWG meeting for Cremorne Wharf Depot. To help this meeting run smoothly:

- Please can you mute your microphone while the team are presenting, there will be opportunities for questions after each site update.
- If you have a question, please select 'raise your hand' in the tool bar (see below) in the middle of your screen, or comment in the 'conversation' box and we'll ask you to unmute yourself to ask the team your question.

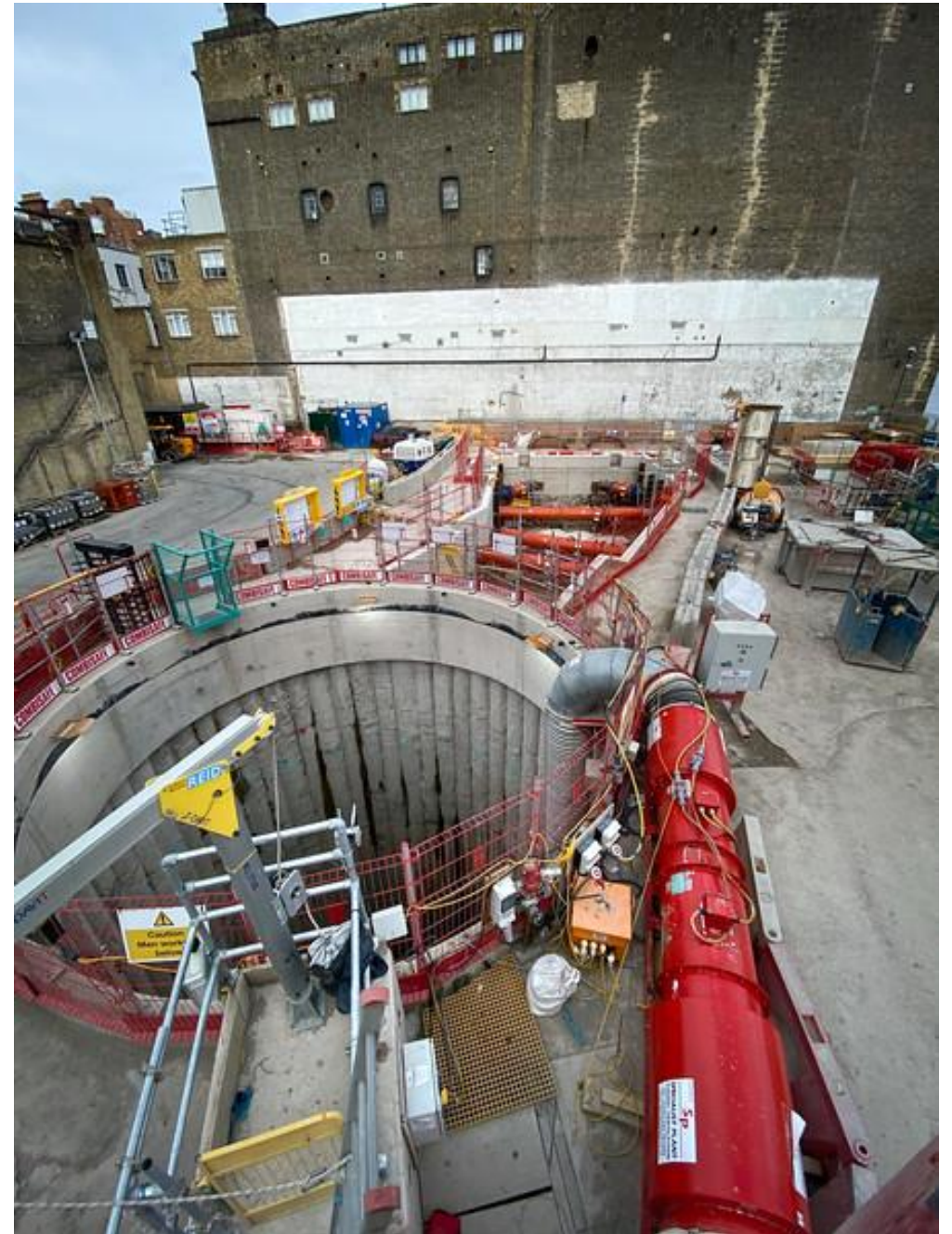


- These meetings are generally clearer if you're wearing headphones or earphones.

Enjoy the meeting

Agenda

- Welcome and Apologies
- Actions of previous meeting
- Cremorne Wharf Depot site update & community feedback
- Environment Update
- Community Relations
- Any other business and open discussion



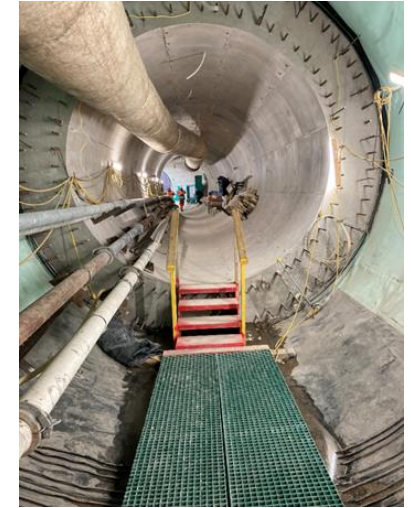
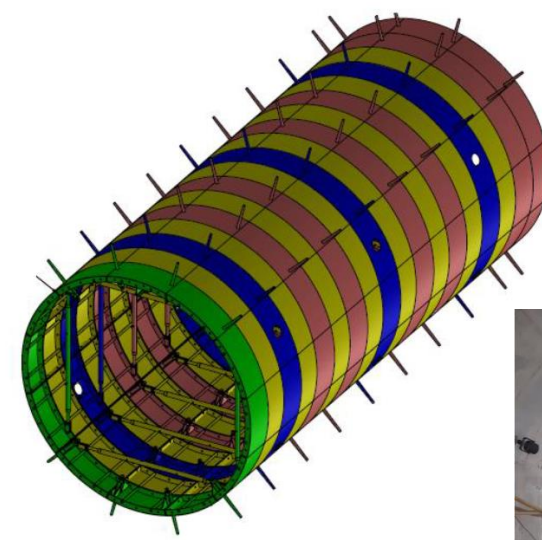
CREMORNE WHARF SITE UPDATE

**Toma Schonkeren
Site Agent**

Progress since last meeting

Connection Tunnel Works Secondary Lining Works

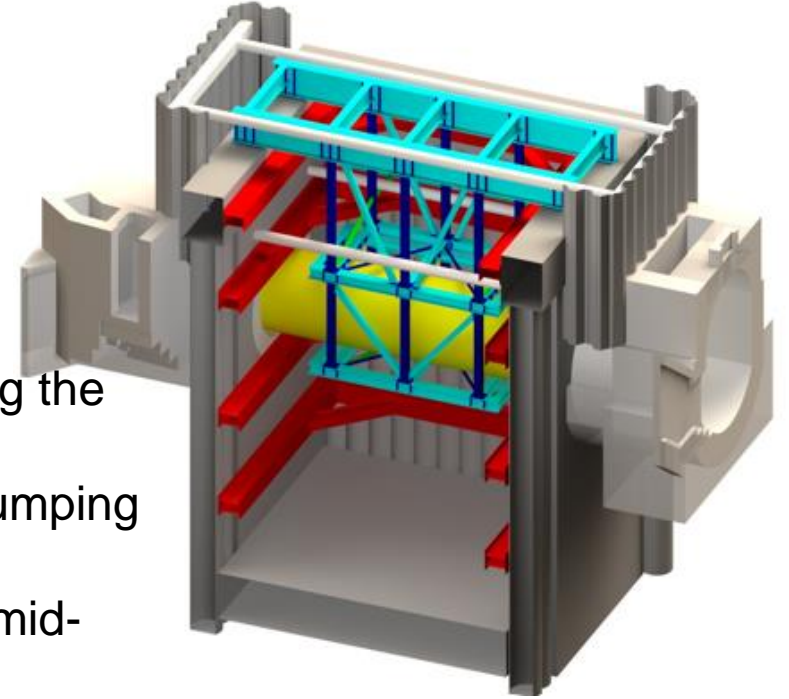
- 1st full round secondary lining shutter being constructed on Tideway Central
- Waterproofing membrane installation along connection tunnel
- Steel-fixing 80% completed
- Tunnel split into 20 concrete pours. Currently completed 13/20 pours 65%



Progress since last meeting

Flume Installation Works

- Steel pipe positioned within the Counters Creek Sewer.
- Enables the team to excavate below Counters Creek Sewer, maintaining the Thames Water Asset to be in place.
- It protects the team from the pumped discharges from the Lots Road Pumping Station as well as tidal water ingress from the river up the sewer.
- Excavation to commence beneath structure once flume commissioned mid-March.



Upcoming work over next 3 months

Interception Chamber Works

- Complete excavation of chamber
- Complete installation of temporary props
- Commence base slab
- Preparation for commencement of internal wall construction



CSO Shaft Internal Wall Construction

- Installation of spool piece for future Counters Creek Flood Alleviation Scheme
- Install waterproofing to walls
- Commence installation of internal walls
- Installation of temporary decking to support walls
- Installation of first stainless steel Vortex Tube sections



Target Programme

[illegible]

CREMORNE WHARF DEPOT ENVIRONMENT UPDATE

**Katy-Leigh Smith
Environmental Lead**

How we are managing the site

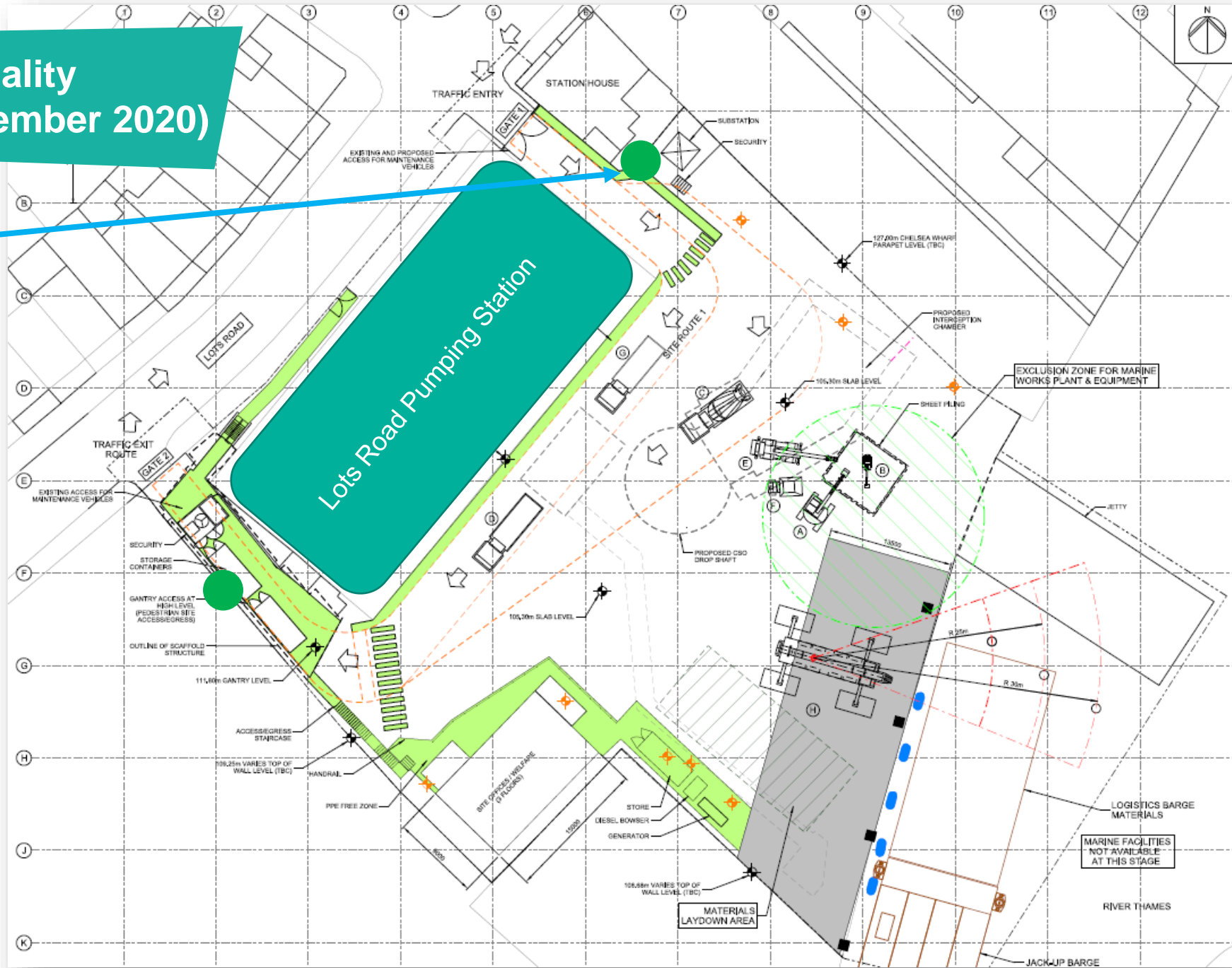
- Regular dust sweeper
- Spraying down works when needed
- Daily activity briefing highlighting measures in place
- Acoustic blankets installed around areas identified as potentially causing some disturbance – e.g. generators
 - currently around the interception chamber for the flume works/breaking out of existing sewer
- 24/7 helpline for residents who are disturbed
- Lights on site turned away from residents when safe to do so



Cremorne Wharf Depot Air Quality Monitoring (September – November 2020)

Air Quality Monitor

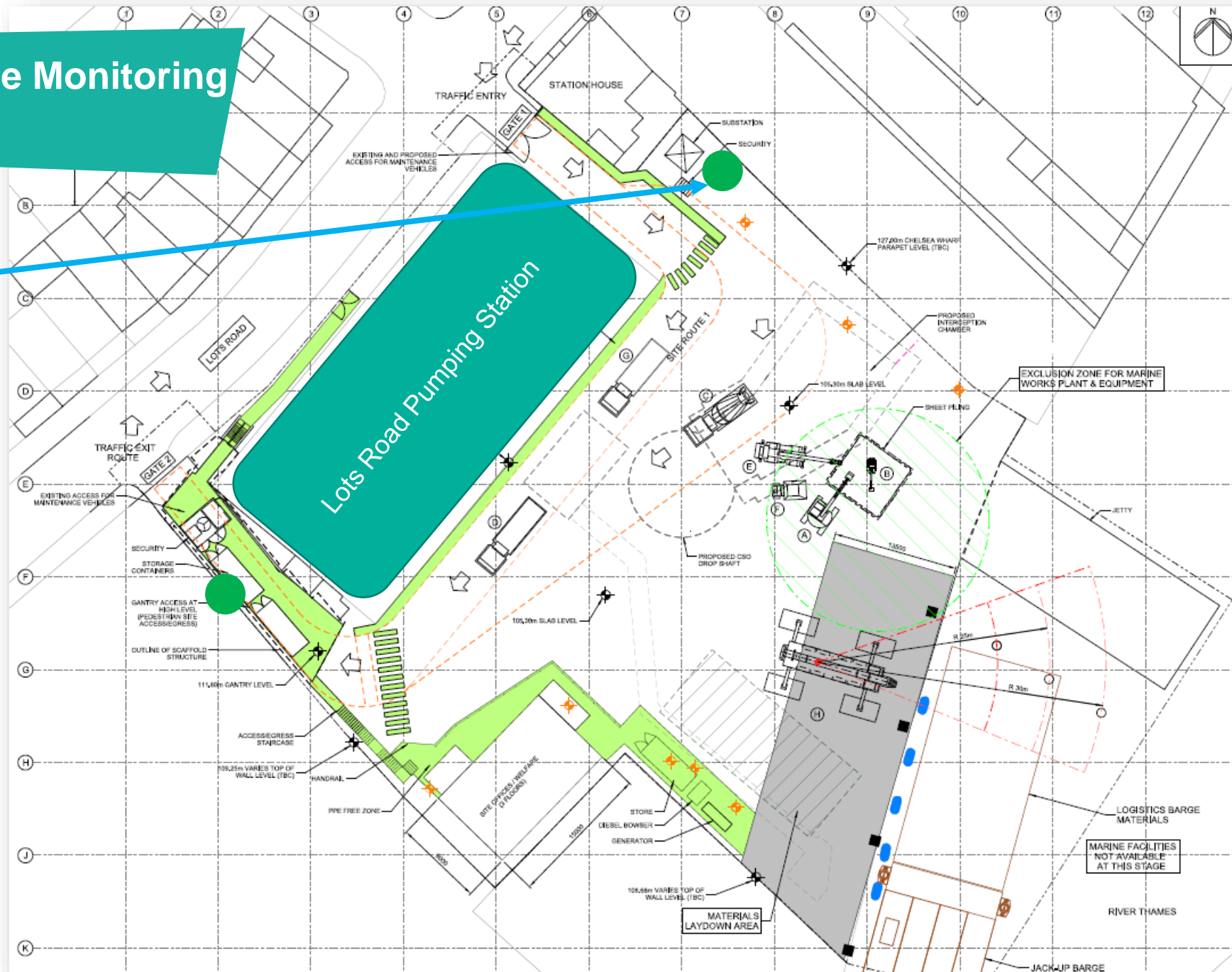
Air Quality Exceedances:
0 Exceedances



Cremorne Wharf Depot Noise Monitoring

Noise
Monitor

Noise Exceedances:
0 Exceedances

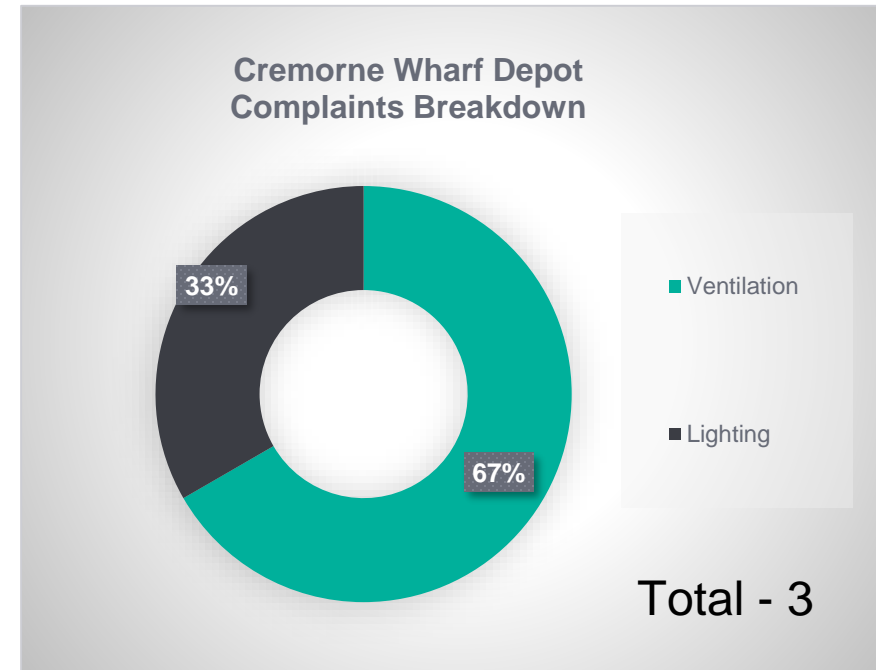
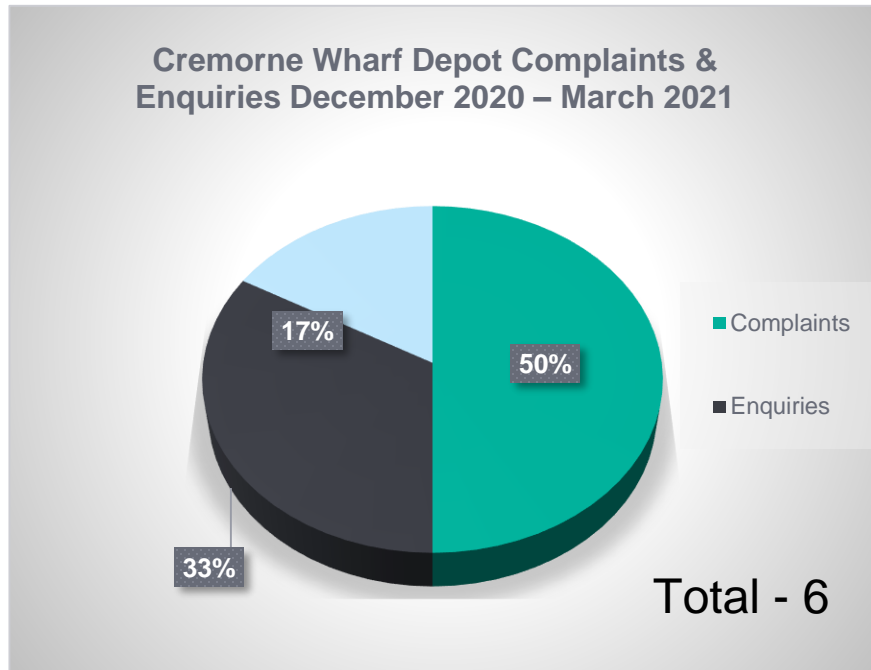




COMMUNITY ENGAGEMENT UPDATE

Alick Whitfield
Community Relations Manager

Complaints & Enquiries (December 2020- March 2021)



Complaints & Enquiries:

- Ventilation service
- General Site information
- Lighting

Compensation and Mitigation

How to make a claim if you are affected by Tideway's work

Who do I go to for advice?

- Independent Advisory Service (IAS) Helpline for independent advice: **0800 917 8845** or info@tidewayias.co.uk
- Tideway's Compensation and Mitigation Lead, Louise Walsh, for personal assistance and advice: via Tideway Helpdesk **08000 30 80 80** or helpdesk@tideway.london or direct **07971 077165** or louise.walsh@tideway.london

How do I submit my claim?

- Louise can submit your claim to the Independent Compensation Panel (ICP) on your behalf or
- You can submit your claim direct to the ICP: admin@tidewayicp.london
- The IAS can send you a claim form, or you can download a claim form off the Tideway website

Any other business

Contact details:

- **Information helpline: 08000 30 80 80**
- **helpdesk@tideway.london**



Tideway

RECONNECTING LONDON WITH THE RIVER THAMES

#SuperSewer

www.tideway.london