

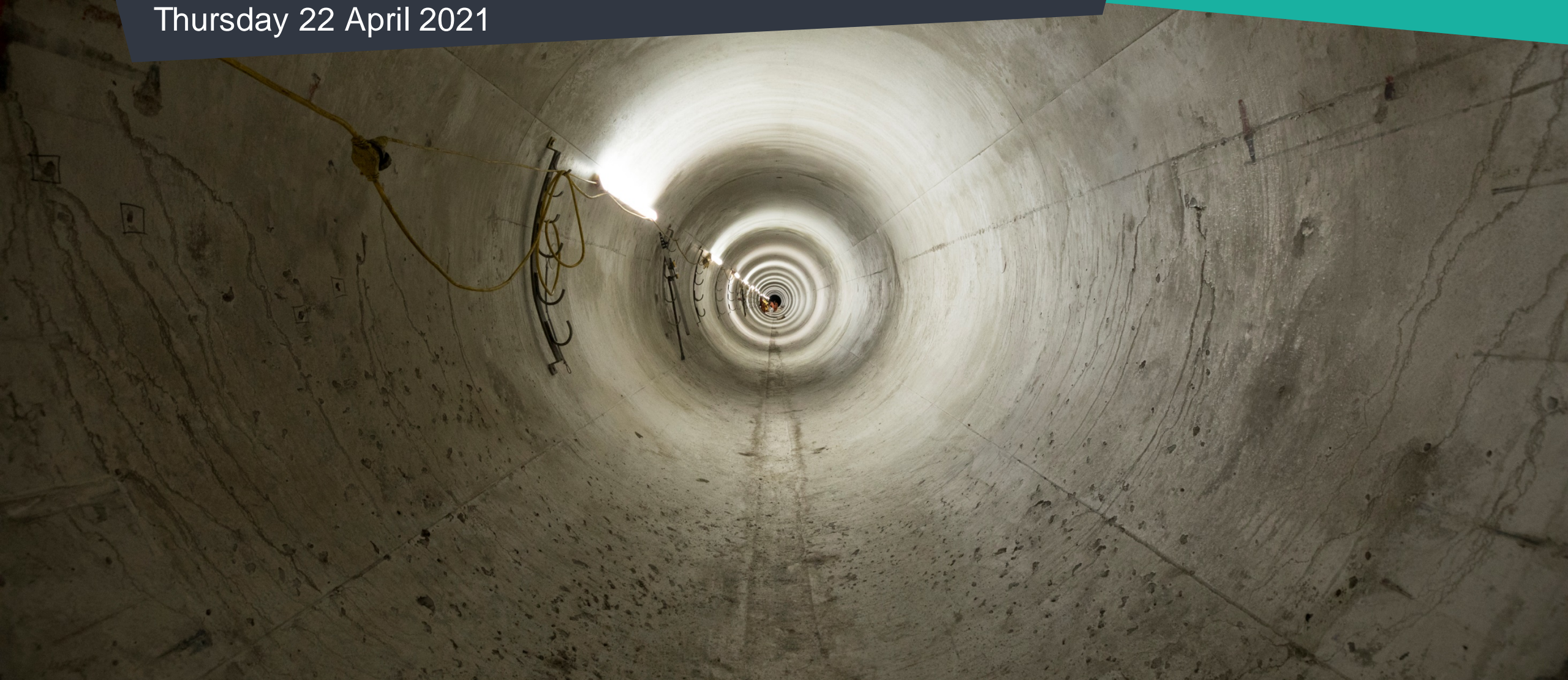
PUTNEY EMBANKMENT FORESHORE & BARN ELMS

Community Liaison Working Group

Thursday 22 April 2021



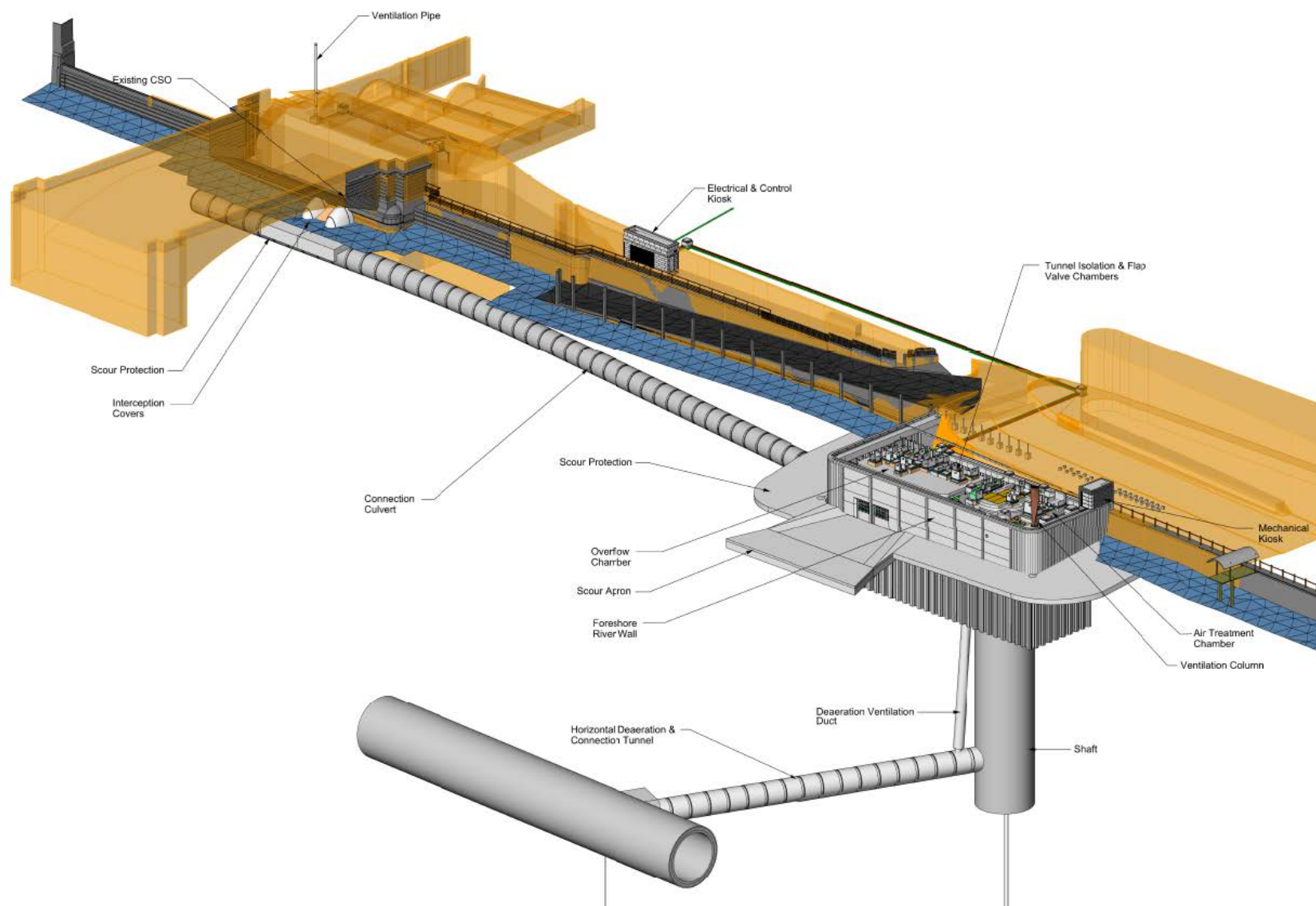
Tideway



PUTNEY EMBANKMENT FORESHORE

Chris North MSc CEng MICE
Section Manager

Putney Structures Overview



Our Site Setup



Foreshore Site Setup



Foreshore Structure



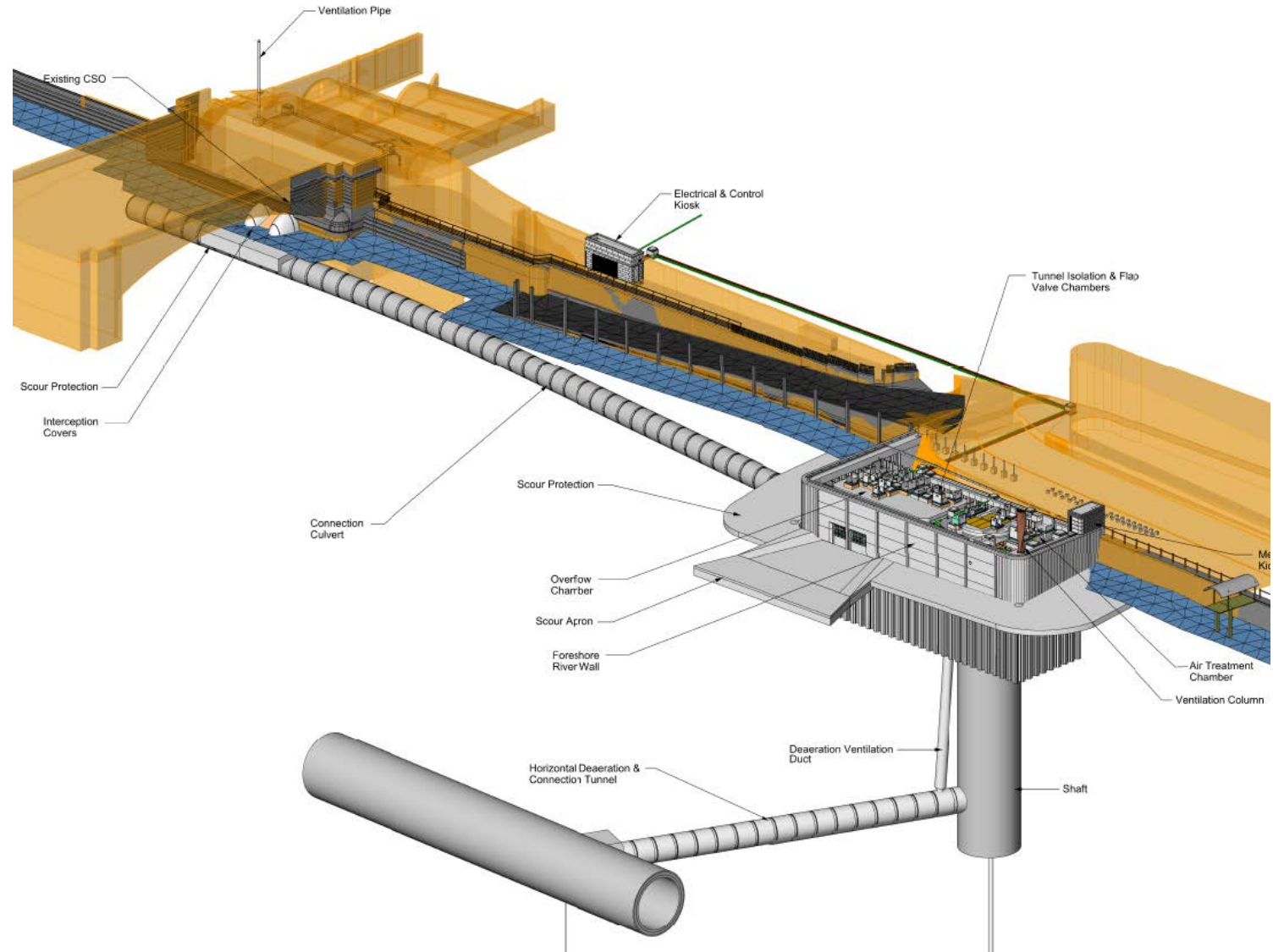
Recent Progress

Our recent milestones (since November 2020):

- Low Level Tunnel – Broken through in to the main tunnel
- Shaft –
 - Completed the vortex pipe concrete surround
 - Installed the vortex generator and poured the concrete surround
 - Poured the shaft cover slab and upstands

Foreshore Structure Cladding –

- Completed fixing rebar on west and east façade
 - Completed testing on cladding system
 - Completed casting first cladding panel
- Lower Richmond Road Services - All successfully installed



Main Tunnel Connection



Shaft



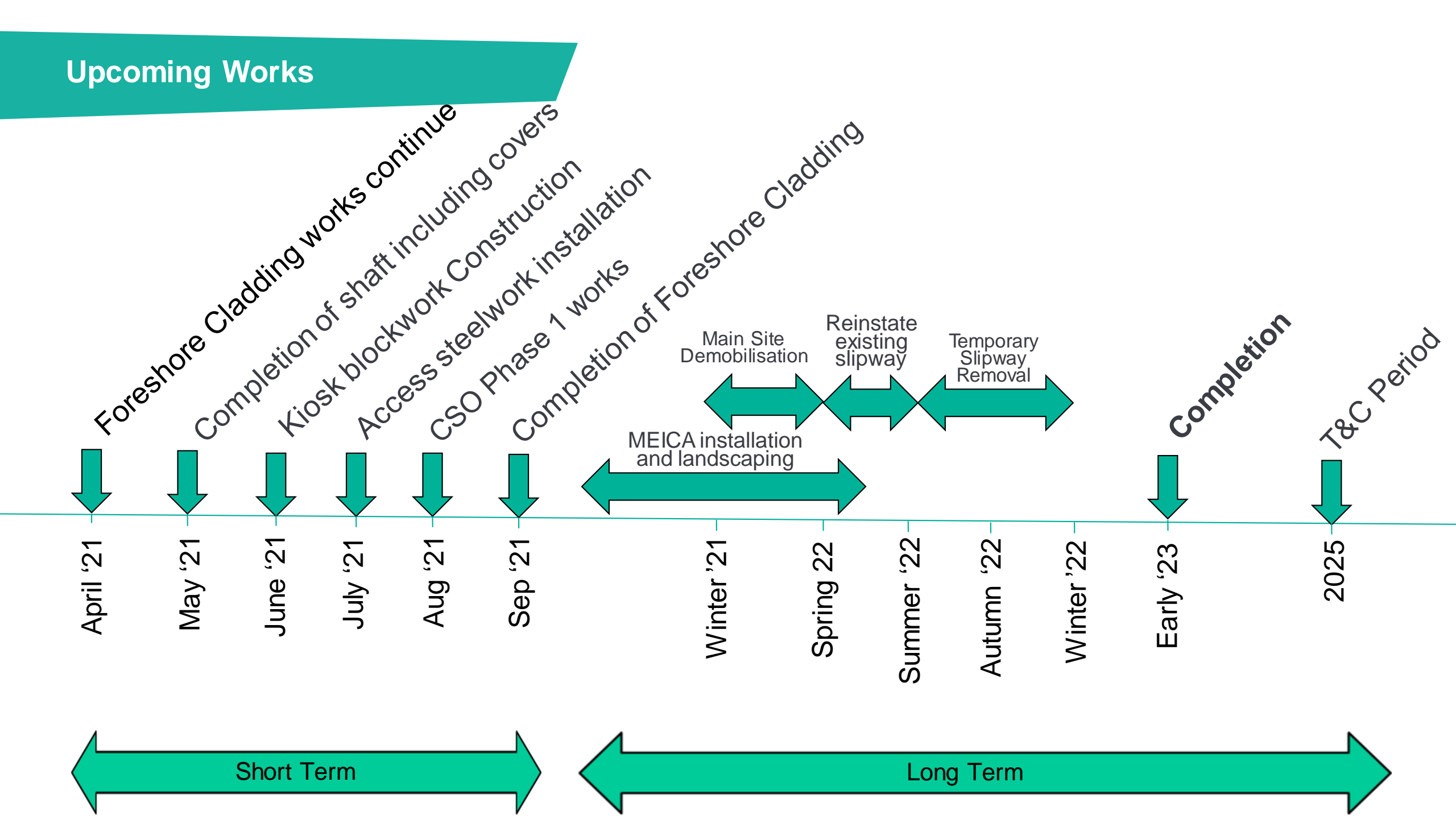
Foreshore Cladding



Lower Richmond Road Services

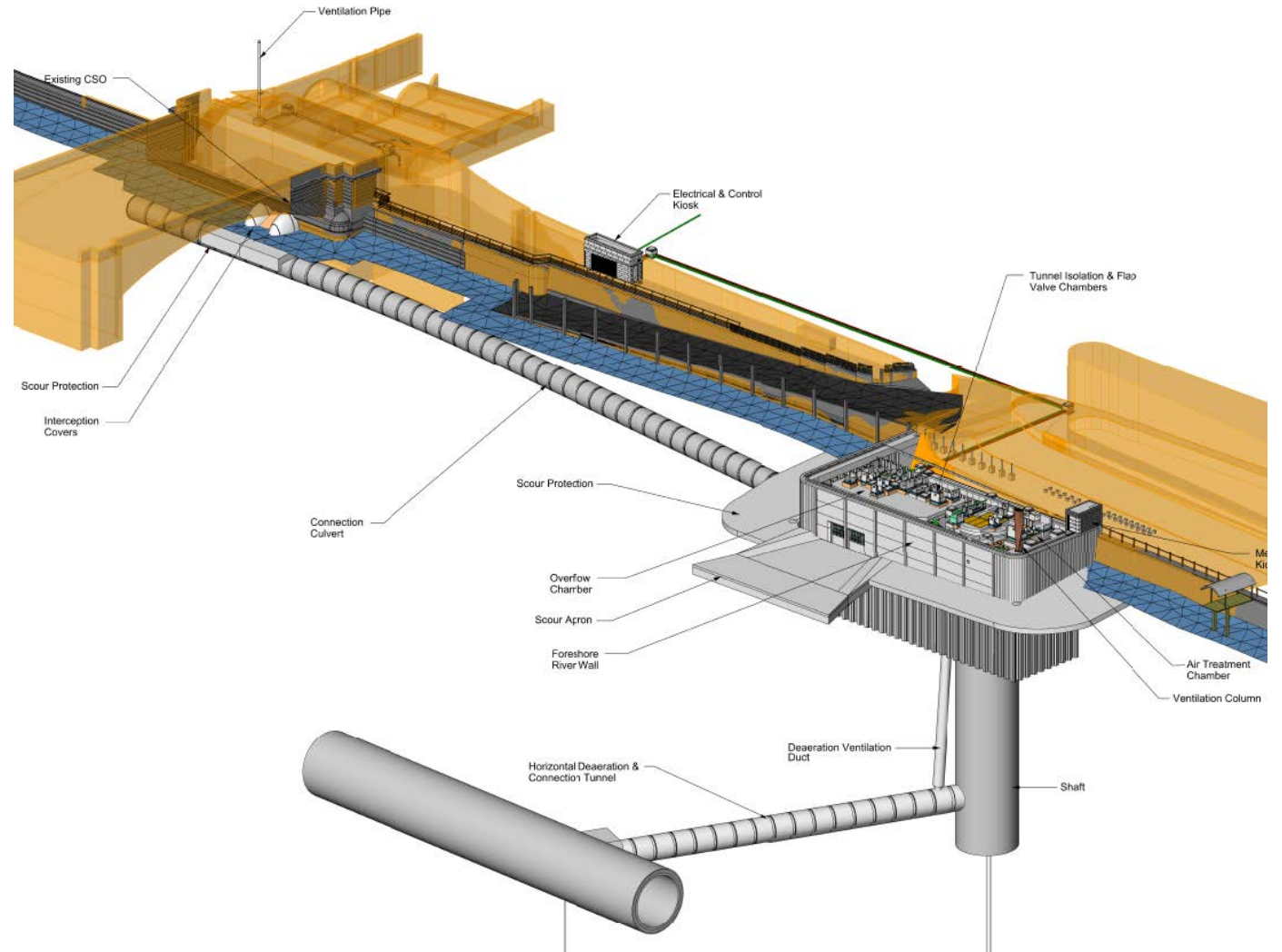


Upcoming Works



Upcoming Works

- CSO connection
- Shaft joint sealing and benching
- Continue with mechanical installation works
- Start surface works
- Continue finalising details of A&L design
- Continue pre-casting and installing river foreshore cladding panels
- Construct base slab for the electrical kiosk



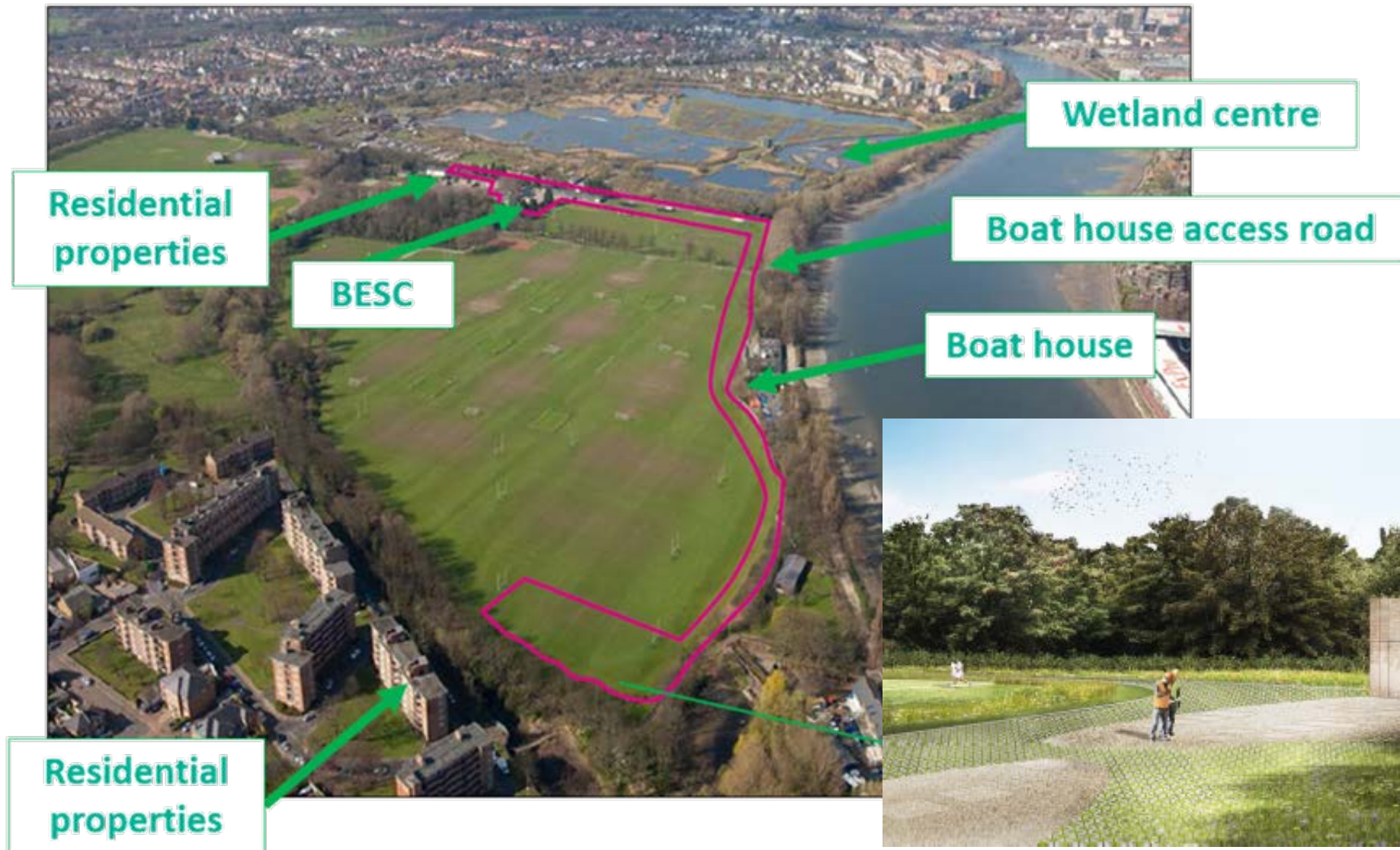


QUESTIONS?

BARN ELMS

Chris North MSc CEng MICE
Section Manager

Barn Elms Overview



Barn Elms Overview



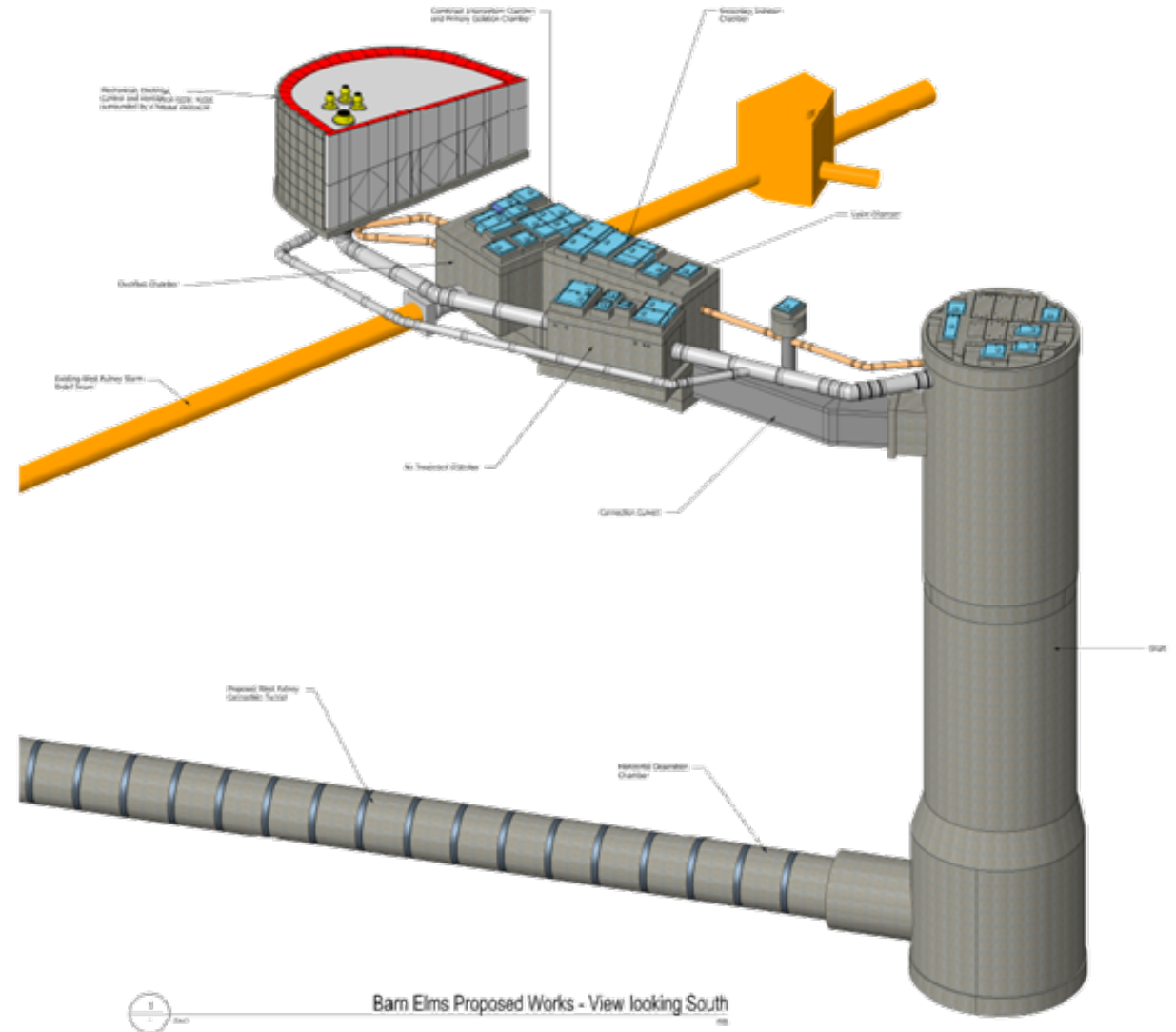
CSO & Shaft Site Setup



Recent Progress

Our recent milestones (since November 2020):

- Short connection tunnel –
 - Completed the main tunnel breakthrough
 - Completed the secondary lining and flow restrictor
- Shaft - Commenced work on setting up for the the secondary lining
- Hydraulic Structures -
 - Completed the covers and upstands
 - Backfilled and compacted
- Culvert to shaft –
 - Excavation completed
 - Archaeology investigation complete
 - breakthrough completed



Connection Tunnel Secondary Lining Set Up



Connection Tunnel Secondary Lining



Main Tunnel Connection & Flow Restrictor



Shaft Secondary Lining Set Up



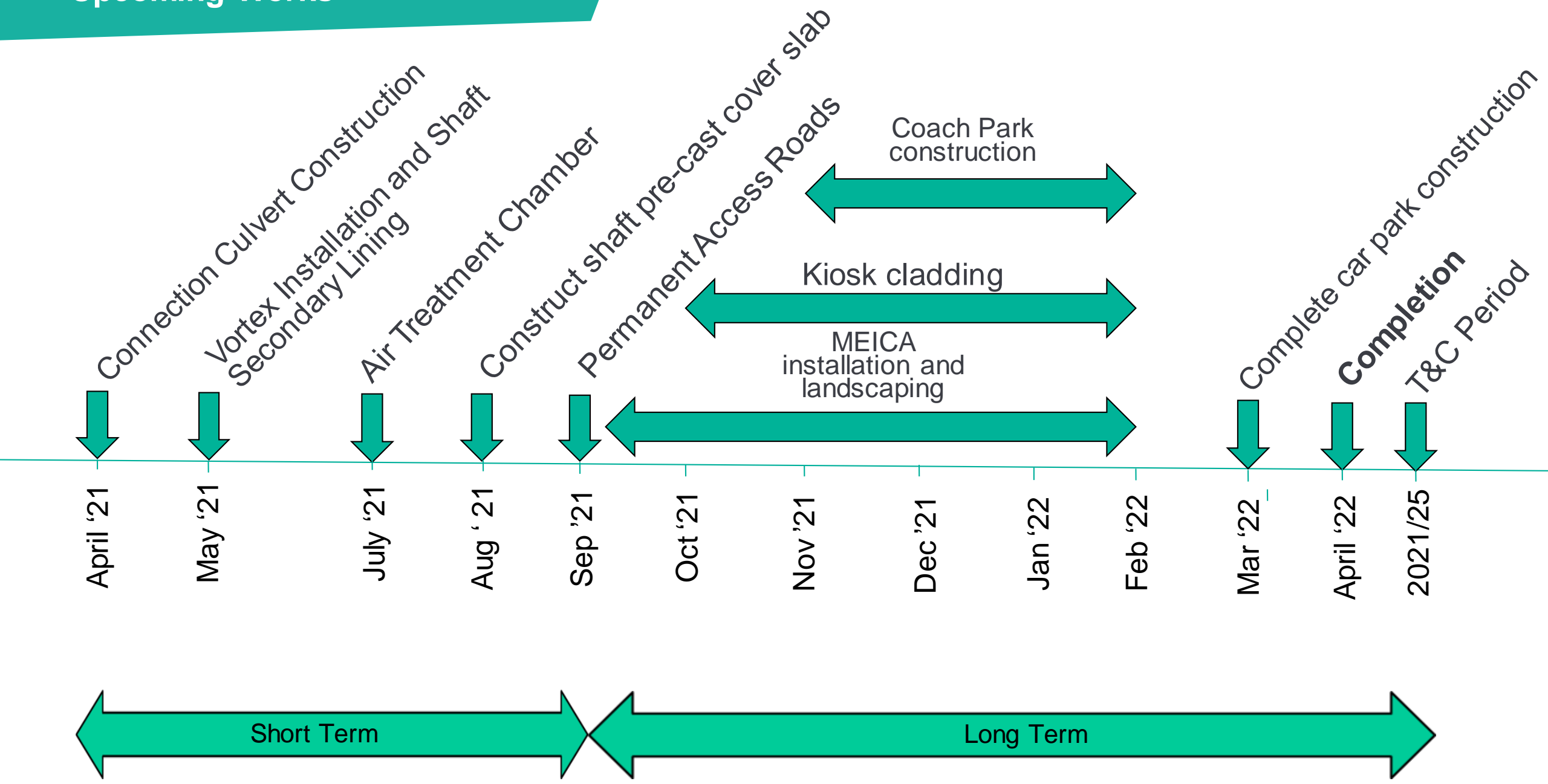
CSO Interception Chambers



Chambers to Shaft Culvert



Upcoming Works



- Start shaft secondary lining
- Install vortex pipe and generator





QUESTIONS?



COMMUNITY ENGAGEMENT

Katie Ashton
Communications Manager

Helpdesk

- Helpdesk have received 2 noise complaints enquiry linked to our schemes at Putney Embankment Foreshore and Barn Elms



Call: 08000 30 80 80
Email: helpdesk@tideway.london
Write to: Freepost TIDEWAY



How To Make A Claim if Affected By Tideway's Work

Who do I go to for advice?

Independent Advisory Service (IAS) Helpline for independent advice:

- 0800 917 8845 or info@tidewayias.co.uk
- Tideway's Compensation Officer, Louise Walsh, for personal assistance and advice
 - Helpdesk: 08000 30 80 80 / helpdesk@tideway.london or
 - Direct: 07971 077165 / louise.walsh@tideway.london

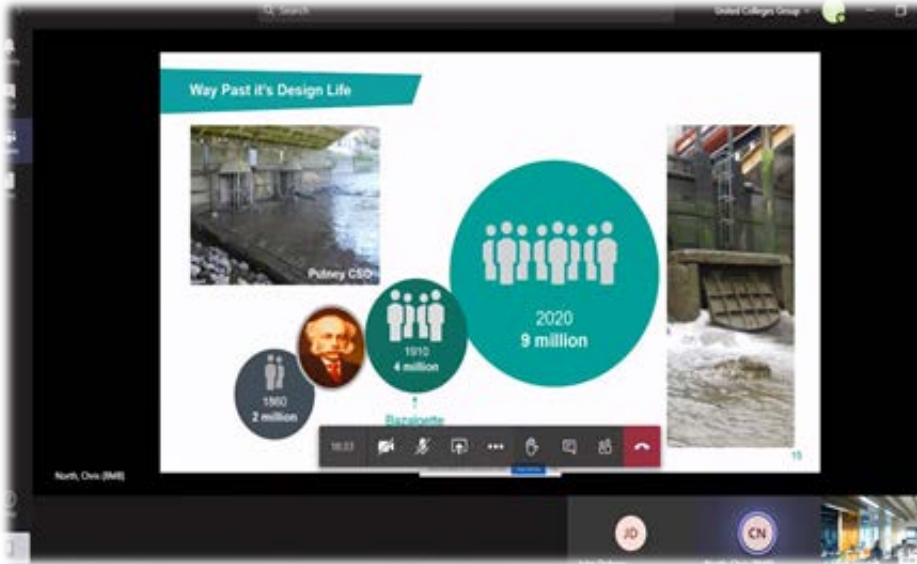
How do I submit my claim?

Louise can submit your claim to the Independent Compensation Panel (ICP) on your behalf, or you can submit your claim direct to the ICP: admin@tidewayicp.london

The IAS can send you a claim form, or you can download the form off the Tideway website: www.tideway.london/help-advice/compensation-information/Independent-Compensation-Panel

Community Investment

- Our community investment activities are continuing when we are able to undertake them safely
- Please contact us if you are aware of an opportunity or community group that we could help



How To Stay Up To Date

Follow us on social media:

@TidewayLondon



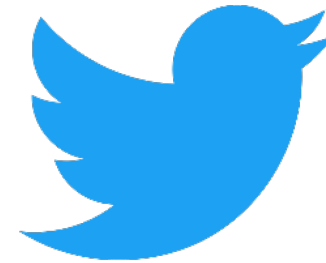
en-gb.facebook.com/TidewayLondon/



www.instagram.com/tidewaylondon/



www.linkedin.com/company/tideway-london/



twitter.com/TidewayLondon



[vimeo/tideway](https://vimeo.com/tideway)

If you would like to be added to our mailing list for works updates/notifications, email helpdesk@Tideway.London



Tideway

RECONNECTING LONDON WITH THE RIVER THAMES

#SuperSewer

www.tideway.london