

KIRTLING STREET & HEATHWALL PUMPING STATION COMMUNITY LIAISON WORKING GROUP

20 April 2021



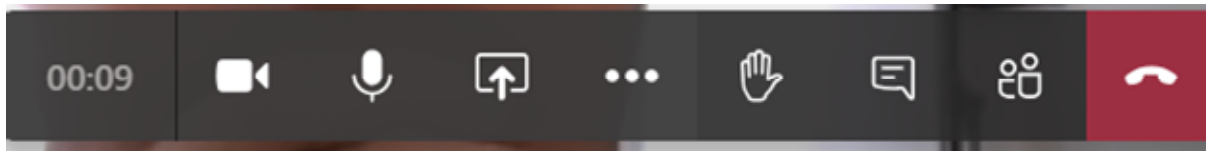
Tideway



Virtual CLWG

Welcome to our latest virtual CLWG meeting for Kirtling Street and Heathwall Pumping Station. To help this meeting run smoothly:

- Please can you mute your microphone while the team are presenting, there will be opportunities for questions after each site update.
- If you have a question, please select 'raise your hand' in the tool bar (see below) in the middle of your screen, or comment in the 'conversation' box and we'll ask you to unmute yourself to ask the team your question.



- These meetings are generally clearer if you're wearing headphones or earphones.

Enjoy the meeting

Agenda

- Welcome, Apologies and Minutes 10 mins
- Heathwall Pumping Station site progress and environmental update 10 mins
Community Feedback 10 mins
- Kirtling Street site progress and environmental update 10 mins
Community Feedback 10 mins
- Community relations 10 mins
- Q&A – Open Discussion 30 mins

An aerial photograph of the Heathwall Pumping Station construction site at dusk. The site is a large, circular concrete structure under construction, illuminated by bright work lights. A green crane is positioned on the right side of the site. In the background, the River Thames flows, with the London skyline visible across the water. Several tall buildings are under construction, with cranes and lights visible. A road with traffic is on the right side of the image.

Rob Cleary
Project Manager

HEATHWALL PUMPING STATION UPDATE

Heathwall Pumping Station Overview

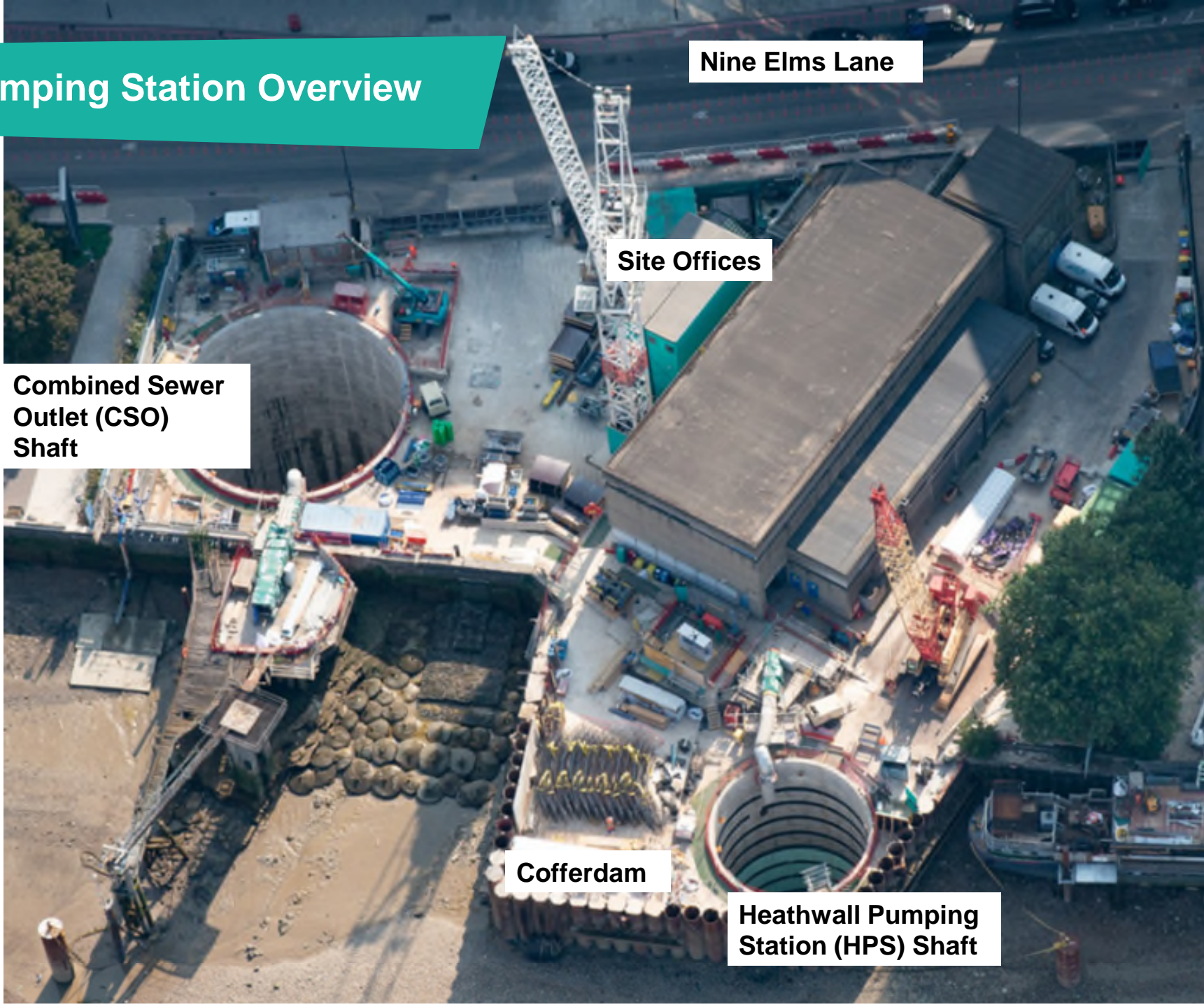
Nine Elms Lane

Site Offices

Combined Sewer
Outlet (CSO)
Shaft

Cofferdam

Heathwall Pumping
Station (HPS) Shaft



Shaft & Tunnels Progress

Tunnels

- Both the connection culvert and connection tunnel are now completed. Secondary lining of both were completed end of 2020.

Shafts

- Secondary lining and internal works completed within the Heathwall Pumping Station (HPS) shaft.
- All stainless steel vortex elements are installed in the HPS shaft
- The waterproofing is fully complete in the CSO shaft. The secondary lining jumpform is over halfway (pour 10 complete out of 14)
- The first pour for the CSO internals has been completed

SWSR Interception Chamber Enabling Works

- Specialist Subcontractor mobilised and works ongoing for the modification of the SWSR sewer accesses

CSO shaft
secondary lining
jumpform



HPS Shaft
Secondary lining
& Internals

Heathwall Pumping 3-month lookahead

- HPS shaft heading beam to be constructed. Precast beams x 3 to be installed across roof (to be completed at later date)
- New river wall capping beam to be constructed
- CSO shaft secondary lining jump-form works to be completed
- South West Storm Relief (SWSR) sewer modification works to be completed.
- Enabling works for SWSR Interception Chamber (IC) ongoing - decommission boreholes, remove concrete working platform, install sheet piles, construct capping beam, modify welfare etc

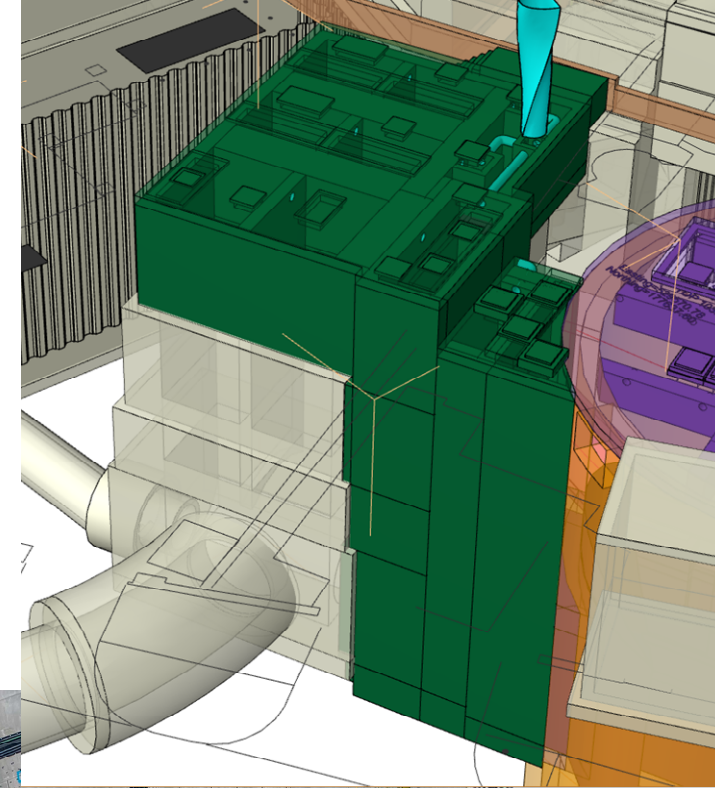
Working Hours

Standard hours will be;

Monday to Friday: 7am to 6pm

Saturday 7am – 5pm

**SWSR IC
lookahead –
enabling works**



**CSO shaft
lookahead –
internals**

HEATHWALL PUMPING STATION ENVIRONMENT UPDATE

Iram Mirza
Site Environmental Lead

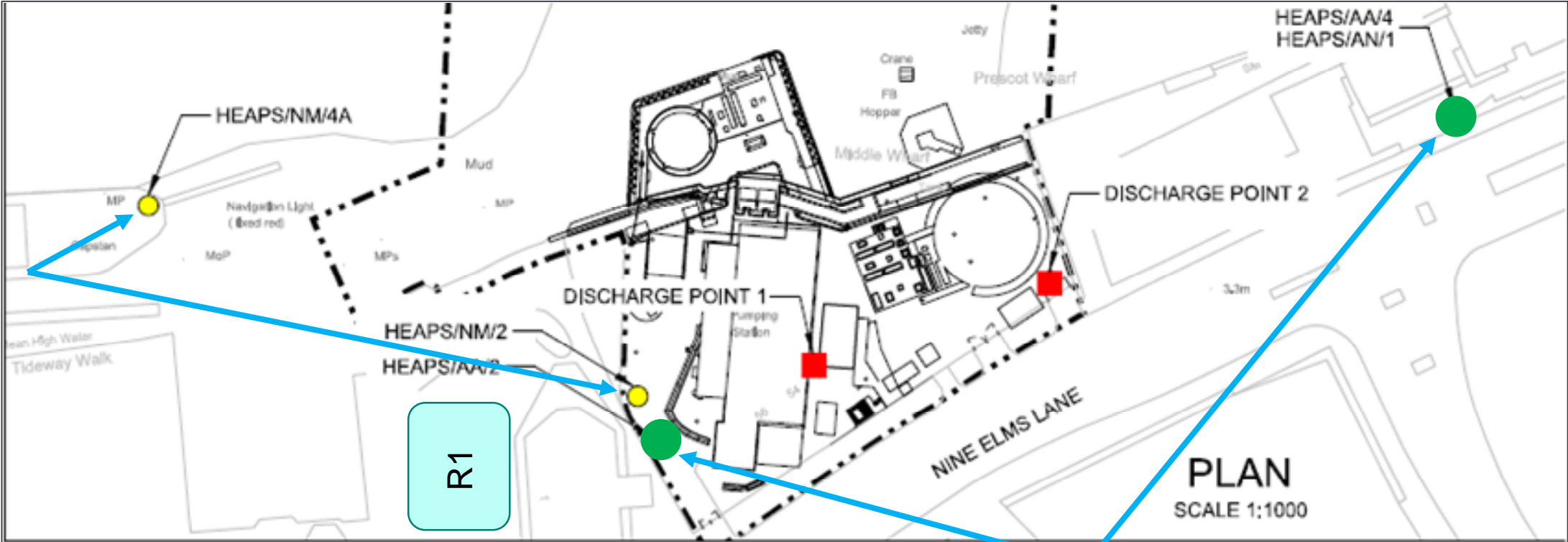
How we are managing the site

- Telematics box installed in West crane, Site Apprentice monitors energy usage & carbon emissions
- Awareness campaign on idling cranes rolled out
- EU emissions stage V mini-crane is energy efficient and emits less pollutants
- Steel reinforcement for secondary lining delivered via river, reducing the number of road HGV deliveries
- Electric powered tower crane in use
- Quieter electric jet wash used on site where practical
- Ventilation removed & acoustic blankets erected around pumps
- Climate change related concrete and carbon training delivered, as well as innovative environmental training
- Innovative low carbon products considered and engagement sessions with suppliers took place
- Dedicated road sweeper both in and out of site
- Lighting sensors installed on site and in the office



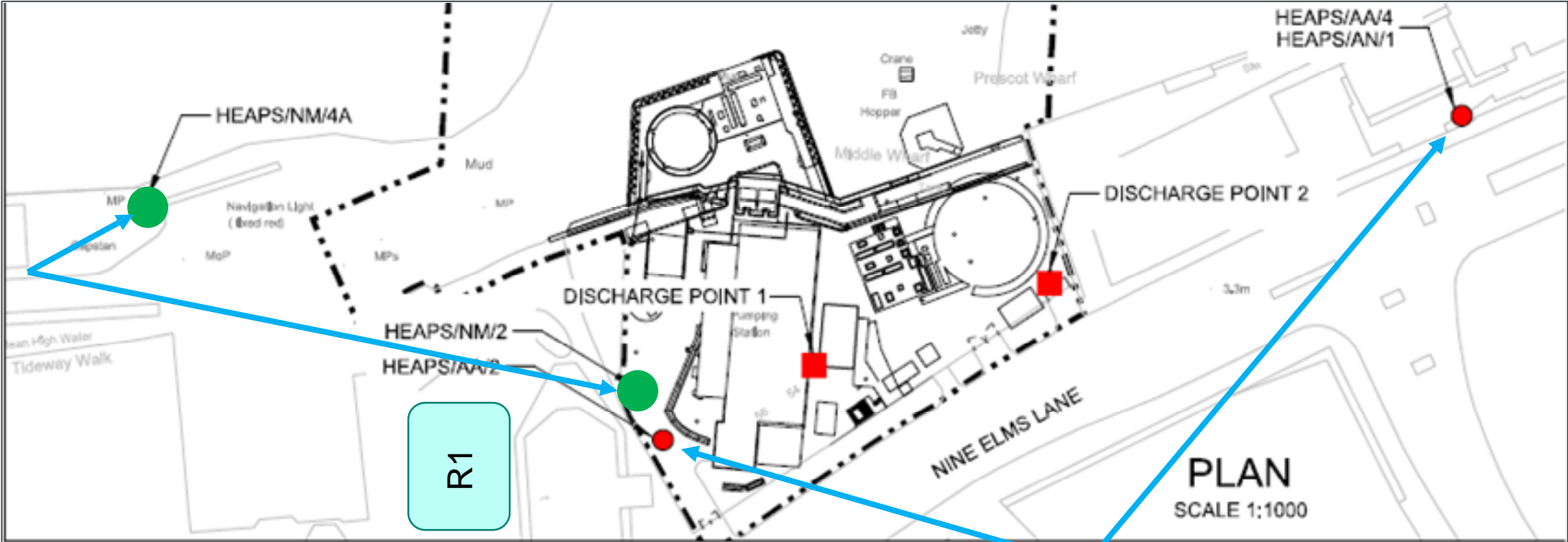
Shafts' secondary lining steel reinforcement delivered via River

Heathwall Pumping Station Air Quality



22 Jan to 15 Apr 2021: No Air Quality Exceedances

Heathwall Pumping Station Noise

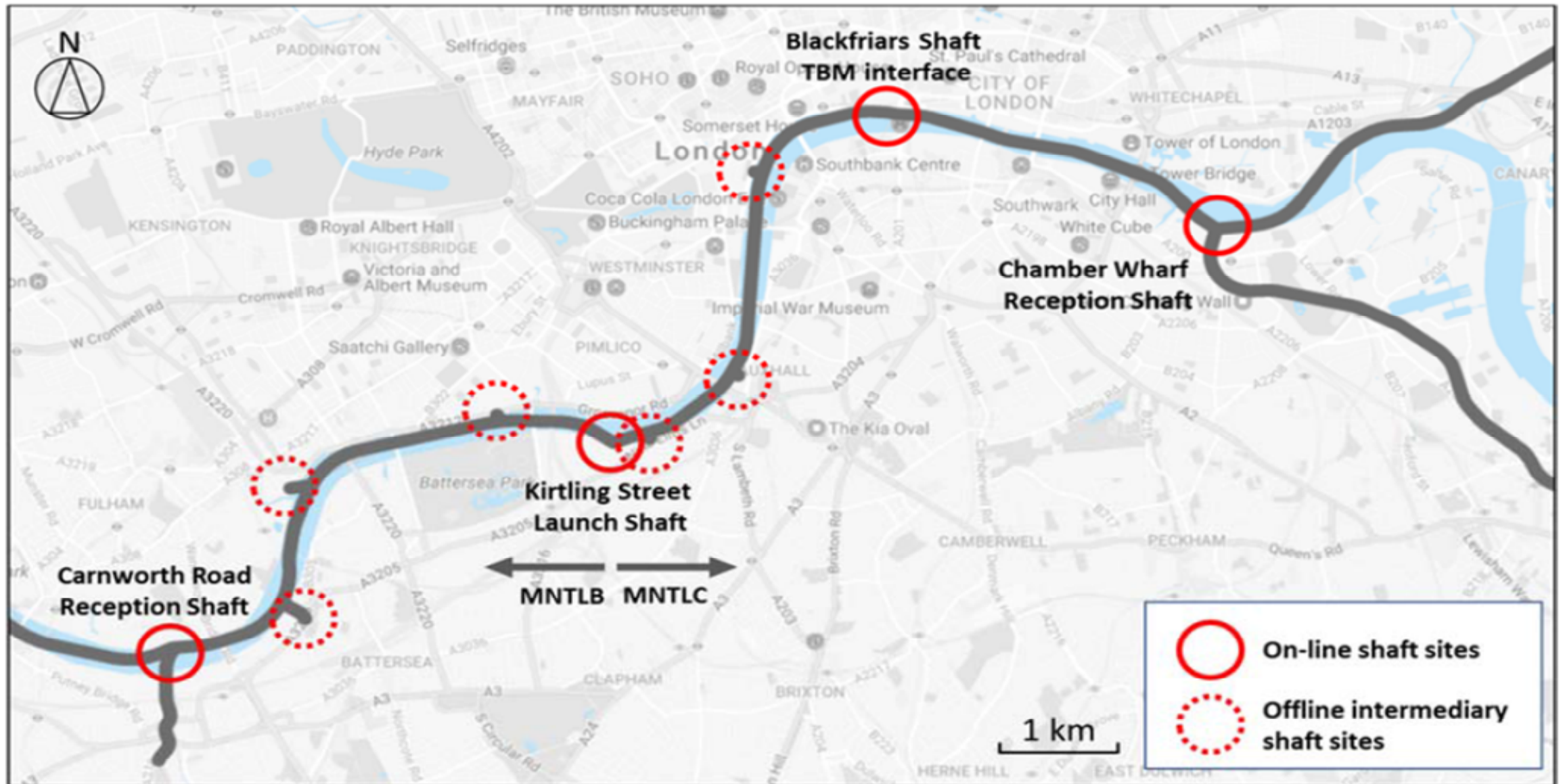


22 Jan to 15 Apr 2021: No Noise Exceedances

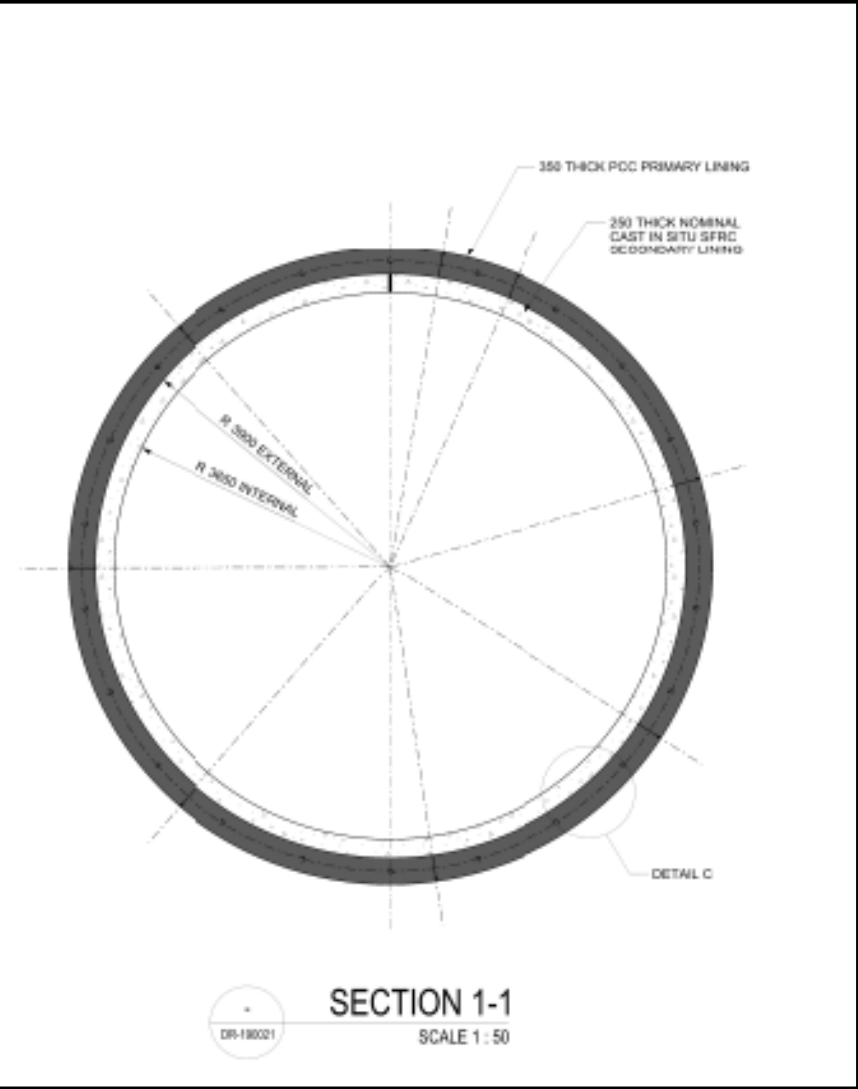
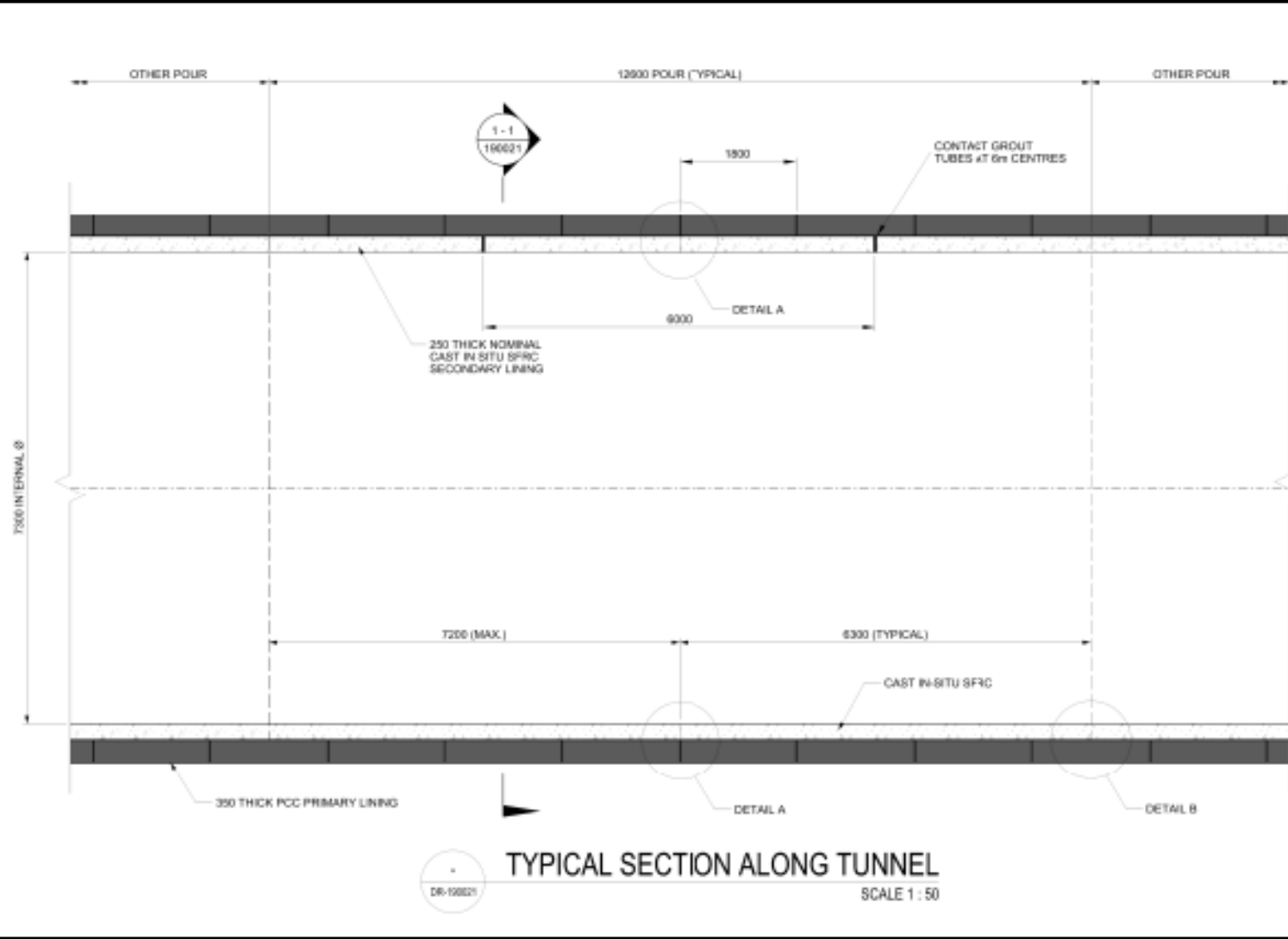
KIRTLING STREET UPDATE

Noel Cooper
Tunnel Project Manager

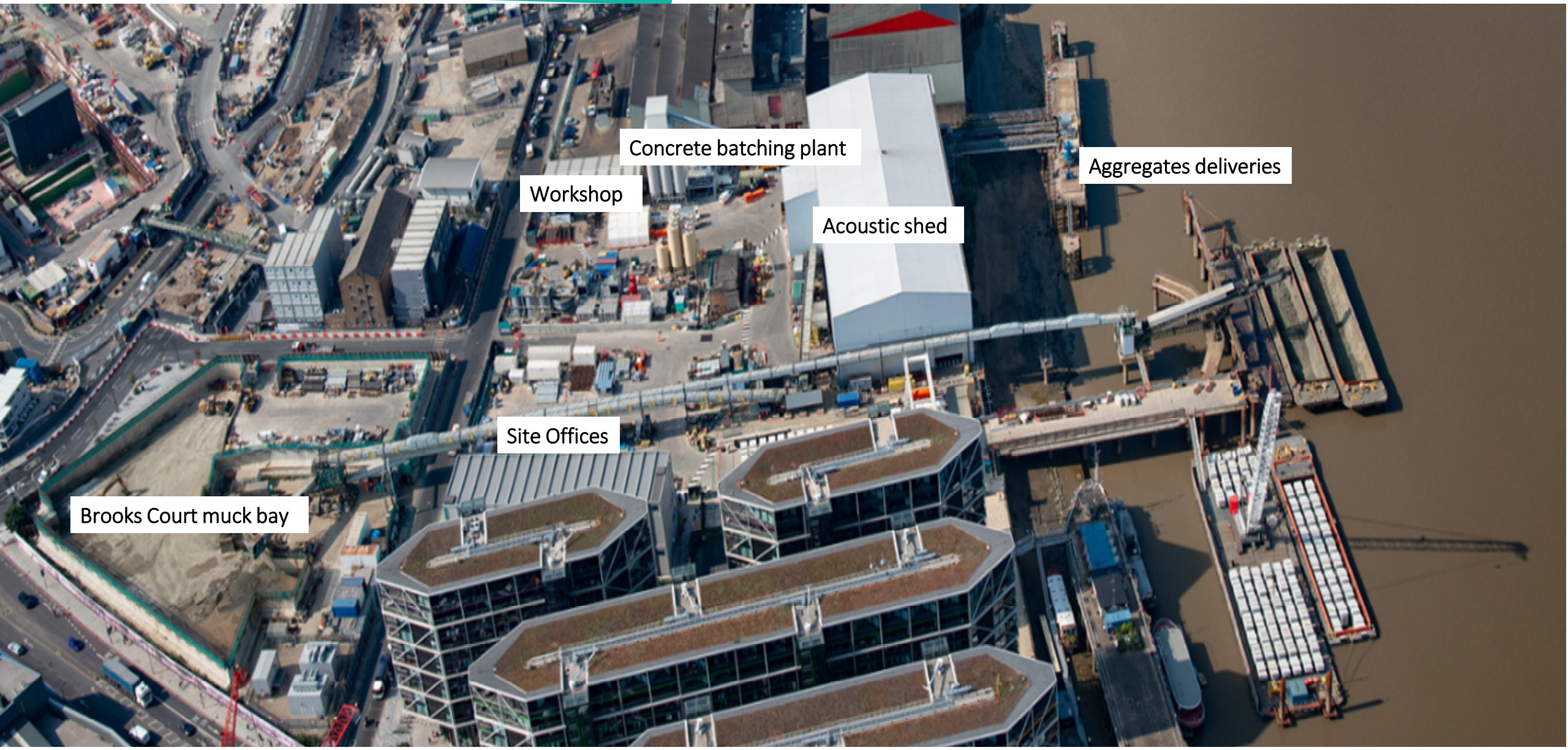
Secondary Lining Objective



Secondary Lining Objective

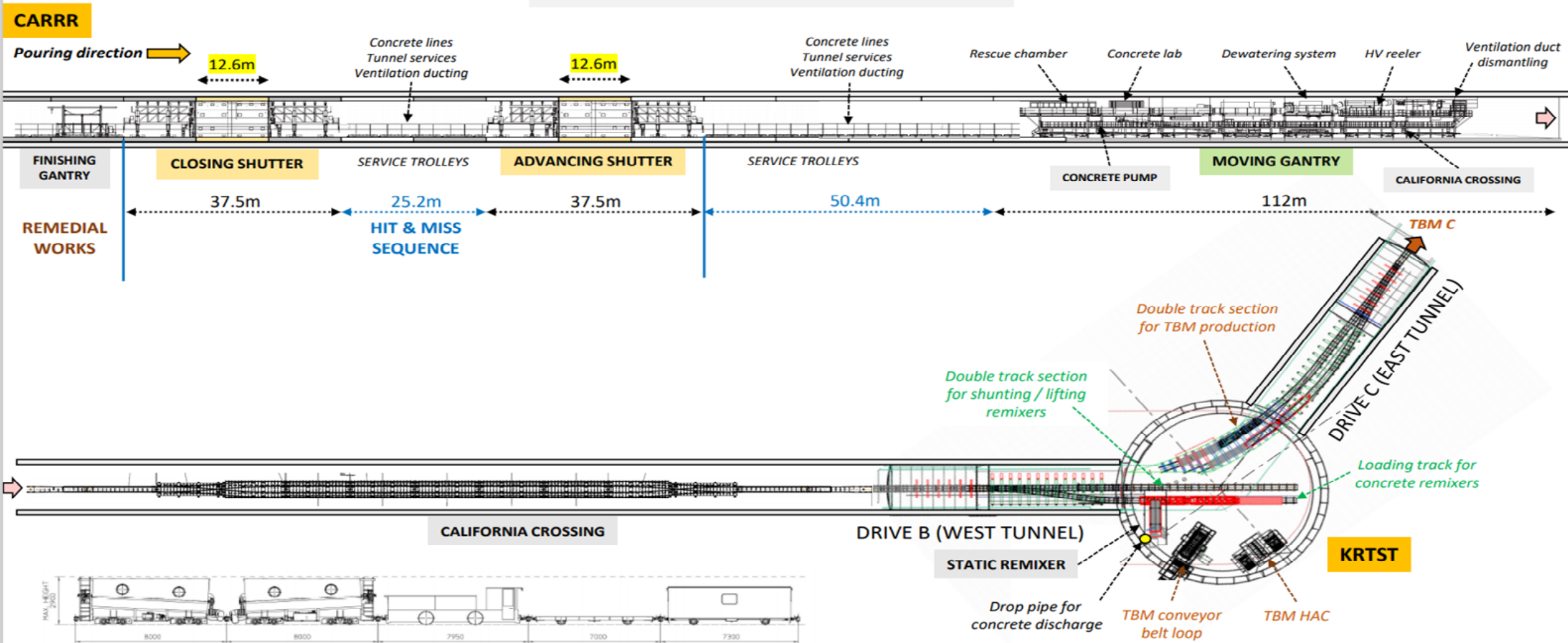


surface site activities – Secondary Lining

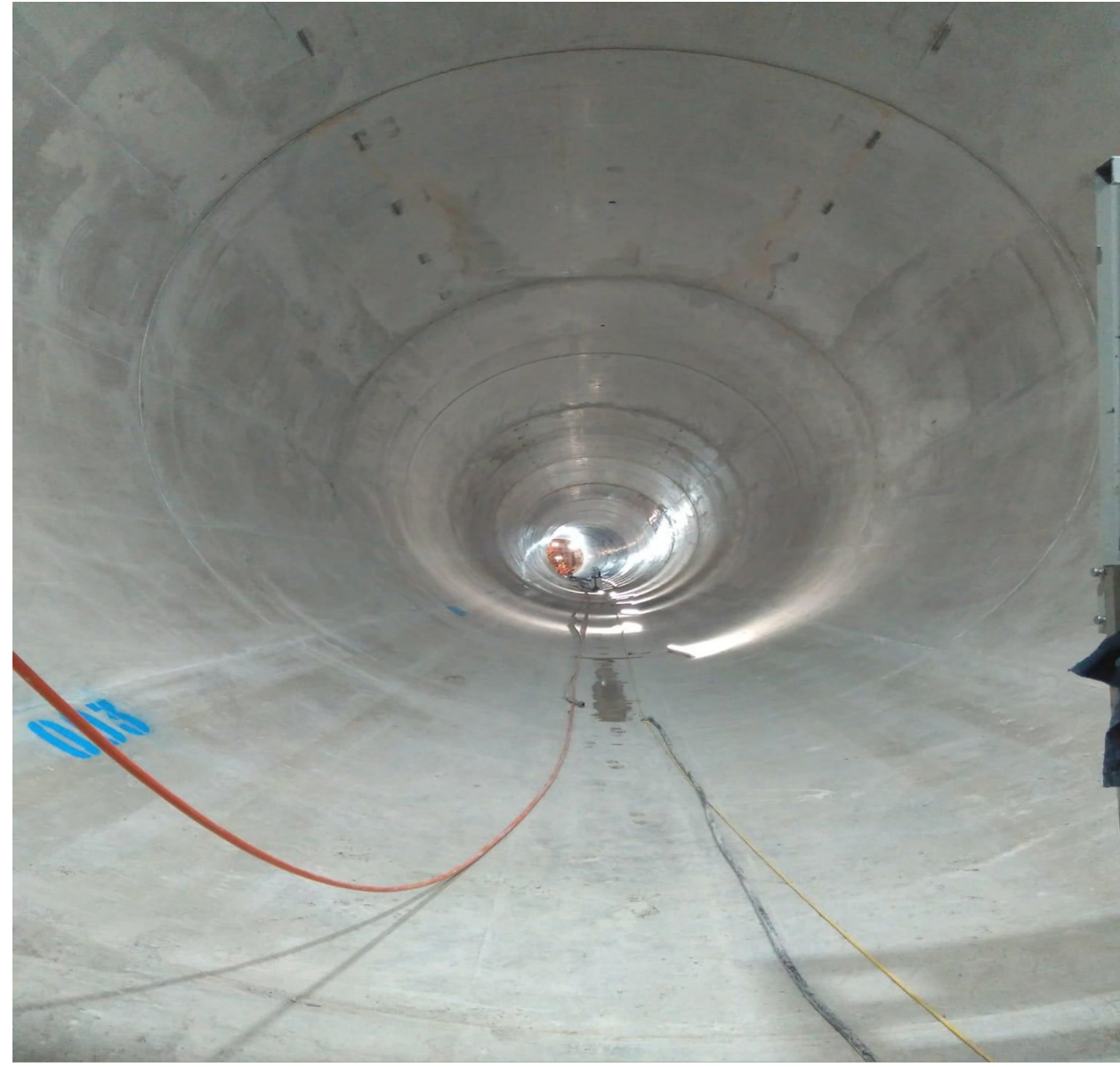


Key underground activities – Sec Lining

SECONDARY LINING CONFIGURATION - DRIVE B -



Secondary Lining Casting





Secondary Lining Progress

- Drive B (Millicent)– Carnwath Road to Kirtling Street – 42% complete
- Drive C (Ursula) – Blackfriars to Kirtling St – 7% complete
- Drive C (Ursula) – Chambers Wharf to Blackfriars – Not yet commenced.

KIRTLING STREET ENVIRONMENT UPDATE

Iram Mirza
Site Environmental Lead

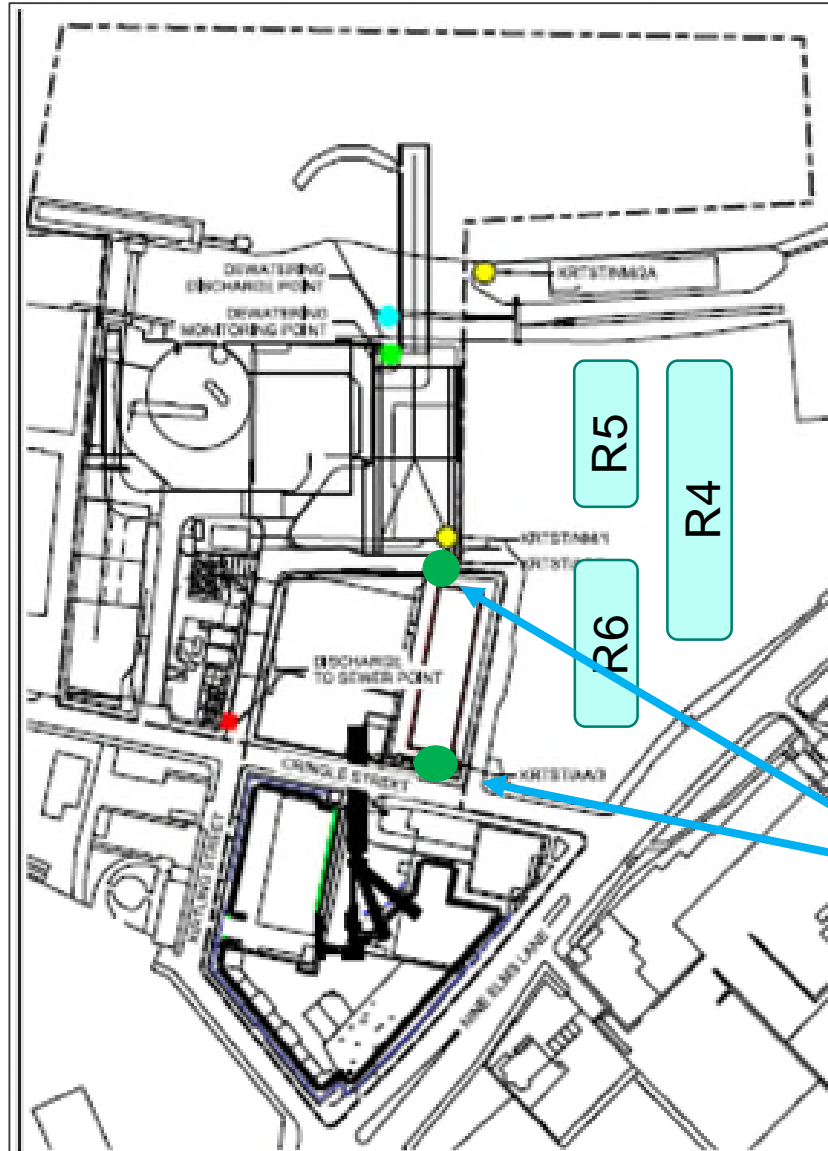
How we are managing the site

- New EU emissions stage V dumper is energy efficient and emits less pollutants compared to previous stage IIIB dumper
- Gravity used to transport concrete down shaft; saving use of pump
- Intelligent lighting trialed in 800 metre section of the tunnel; allowed lighting to be reduced by 30% when there was no activity
- Concrete remixers powered by electricity and kinetic energy
- Acoustically clad secondary lining concrete batching plant
- On site maintenance workshop; regular maintenance of plant
- Posters and briefings used to remind site team to be mindful of neighbours and keep noise levels down
- Dedicated road sweeper both on and off site
- Aggregates delivered via river & deliveries restricted to dayshifts
- Secondary lining thickness reduced in design stage, saved on embodied carbon and reduced the number of material deliveries
- Acoustic blankets erected around jet wash in Brooks Court
- Metal skip relocated away from neighbours
- Trees donated by Tideway to raise awareness on climate change



Gravity used to transport secondary lining concrete down shaft

Kirtling Street Air Quality Monitoring

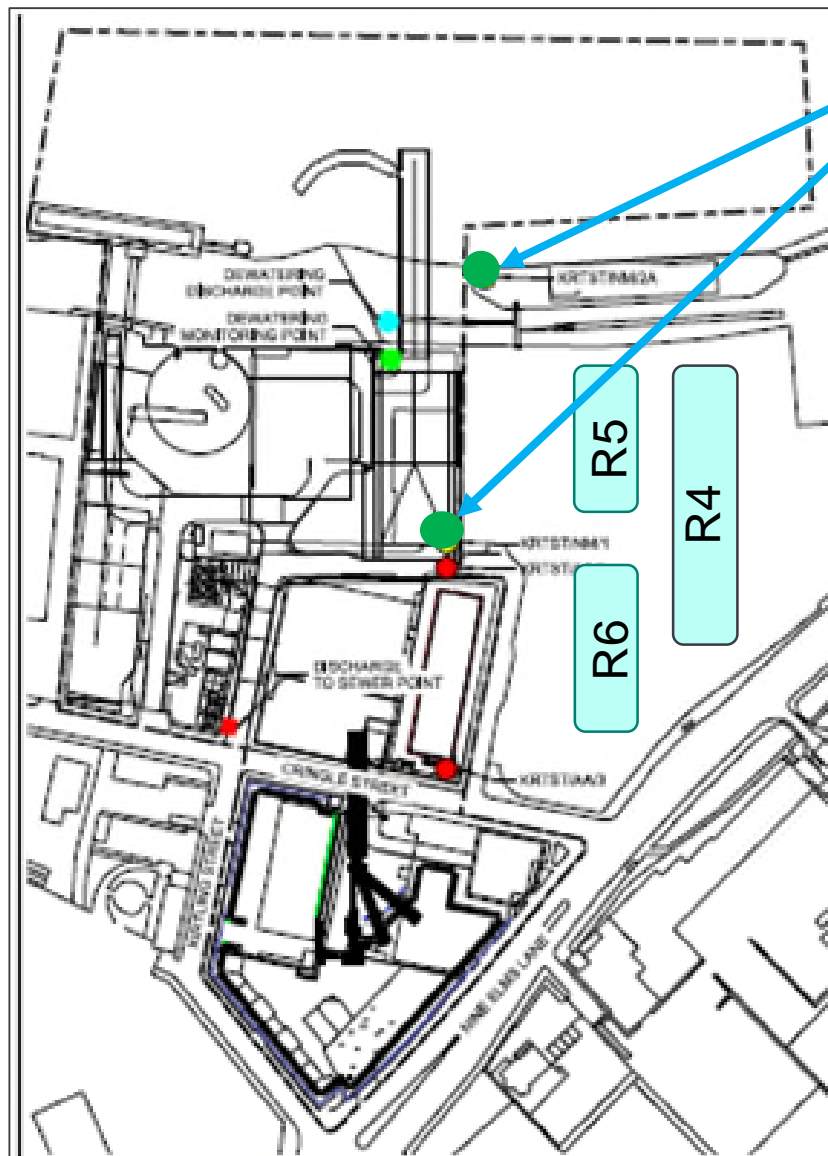


Noise Monitors

**22 Jan to 15 Apr 2021:
No Air Quality Exceedances**

Air Quality Monitors

Kirtling Street Noise Monitoring



Noise Monitors

**22 Jan to 15 Apr 2021:
No Noise Exceedances**

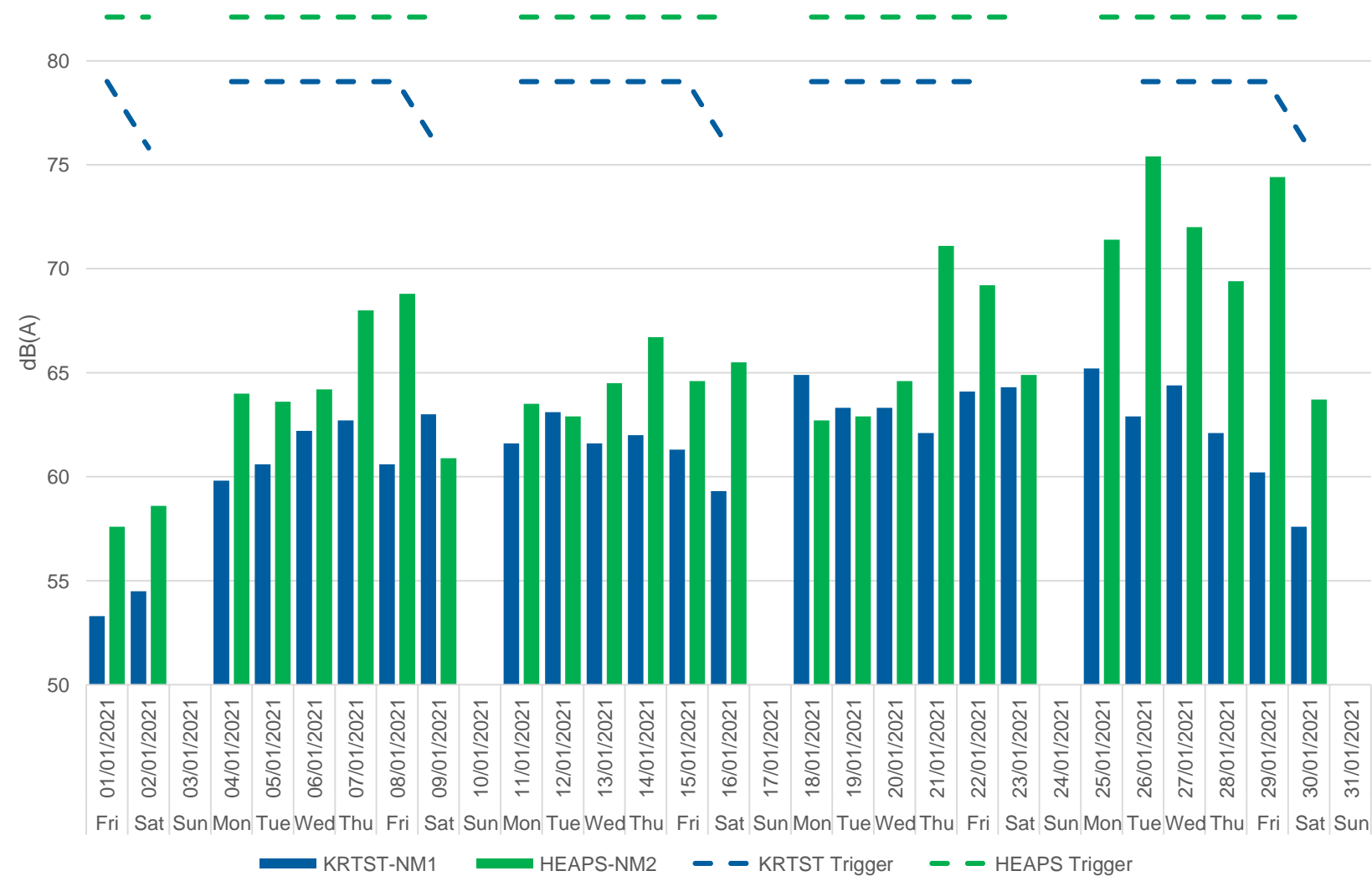
Air Quality Monitors



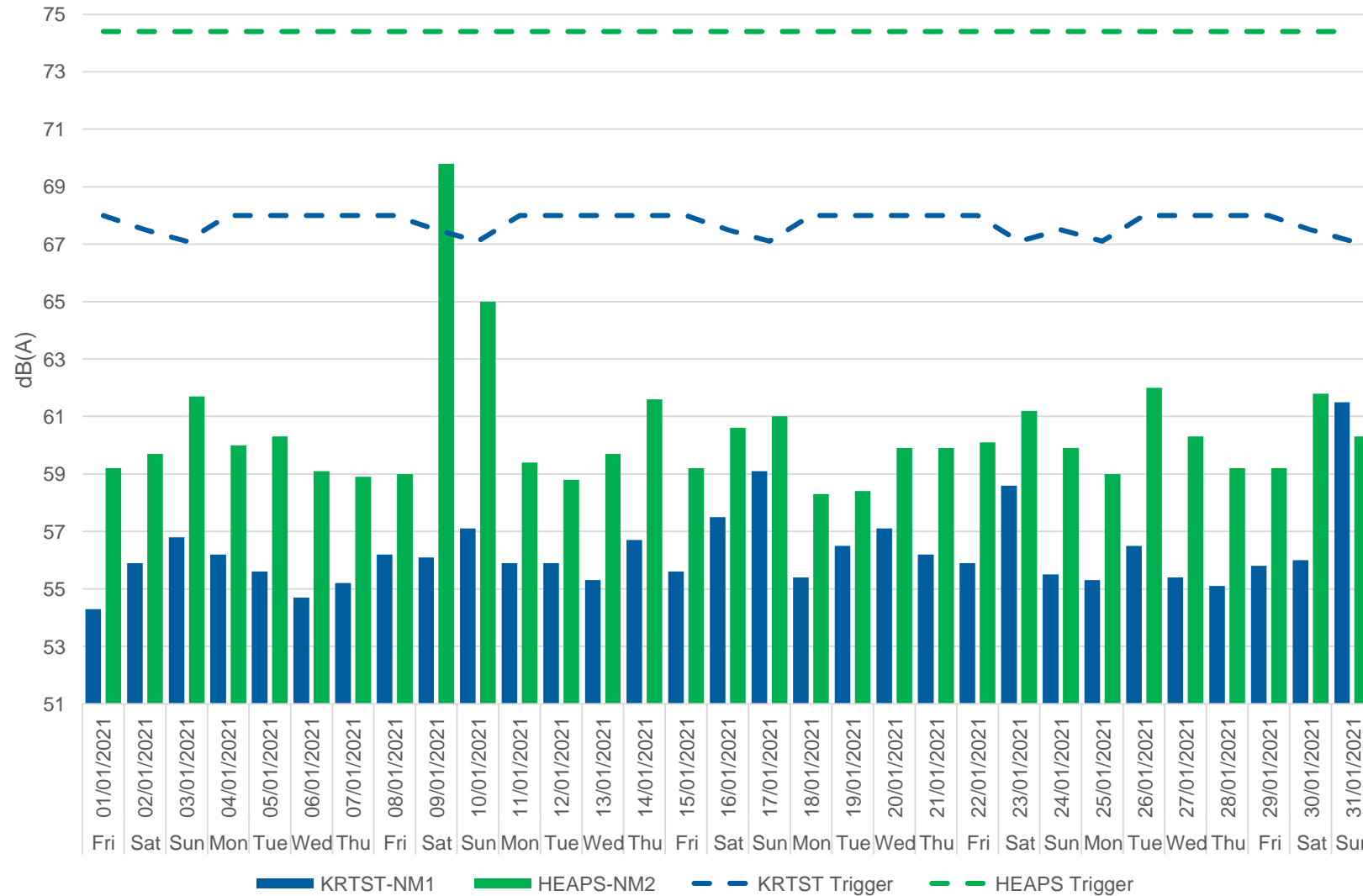
**NOISE DATA
JAN – MARCH 2021**

**Iram Mirza
Site Environmental Lead**

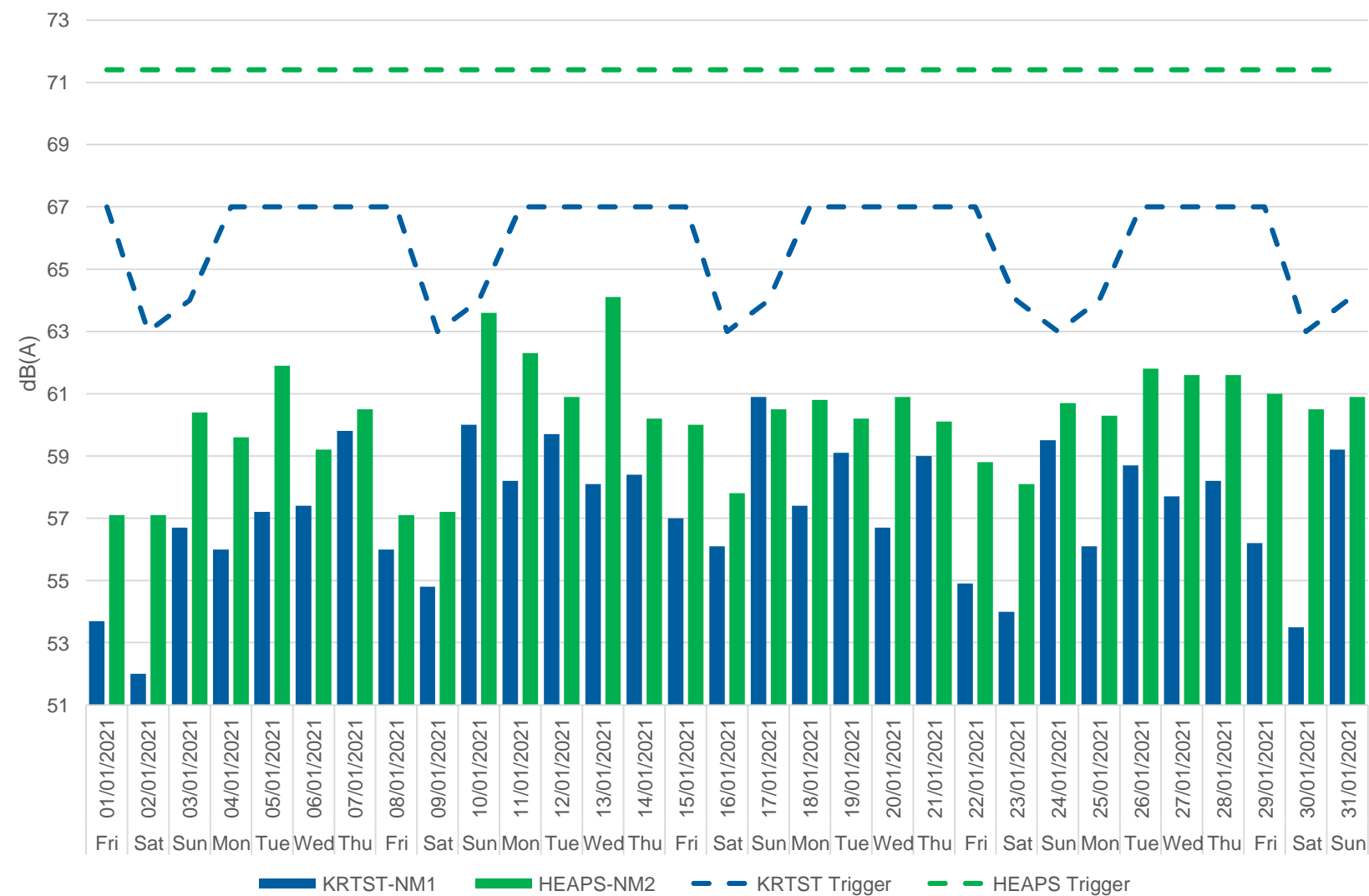
Daytime (Core) – January 2021



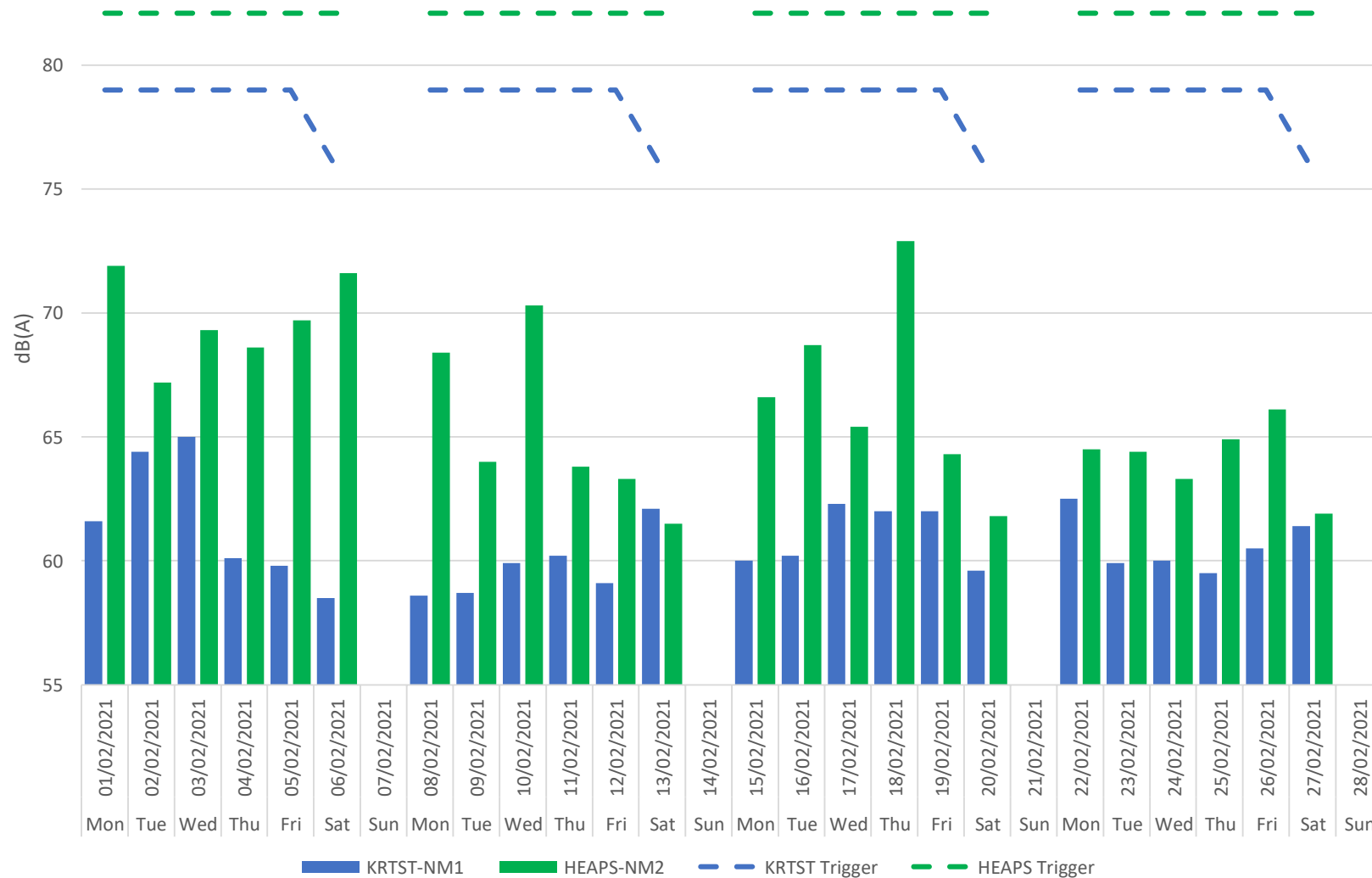
Evening (Extended) – January 2021



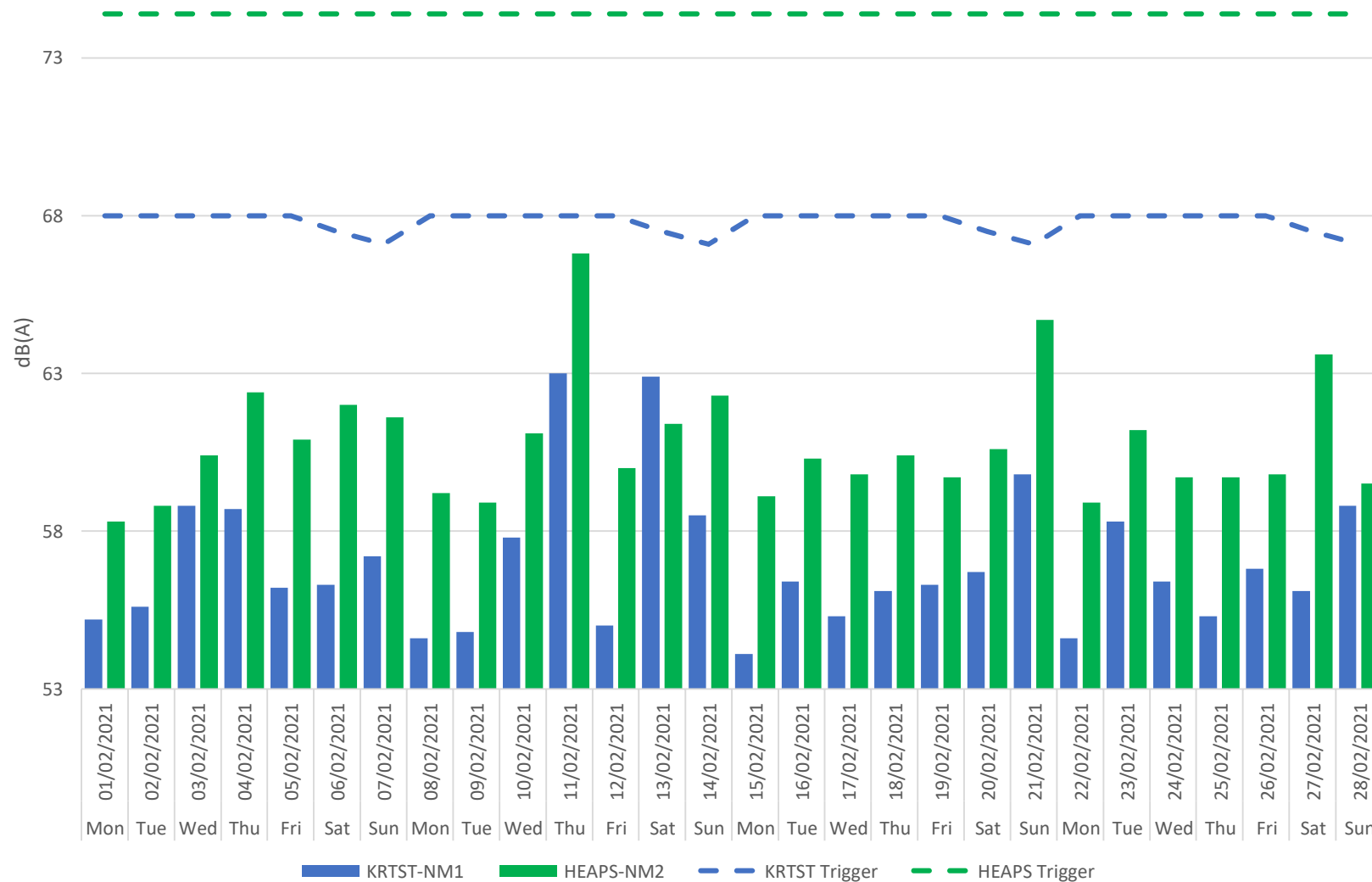
Night – January 2021



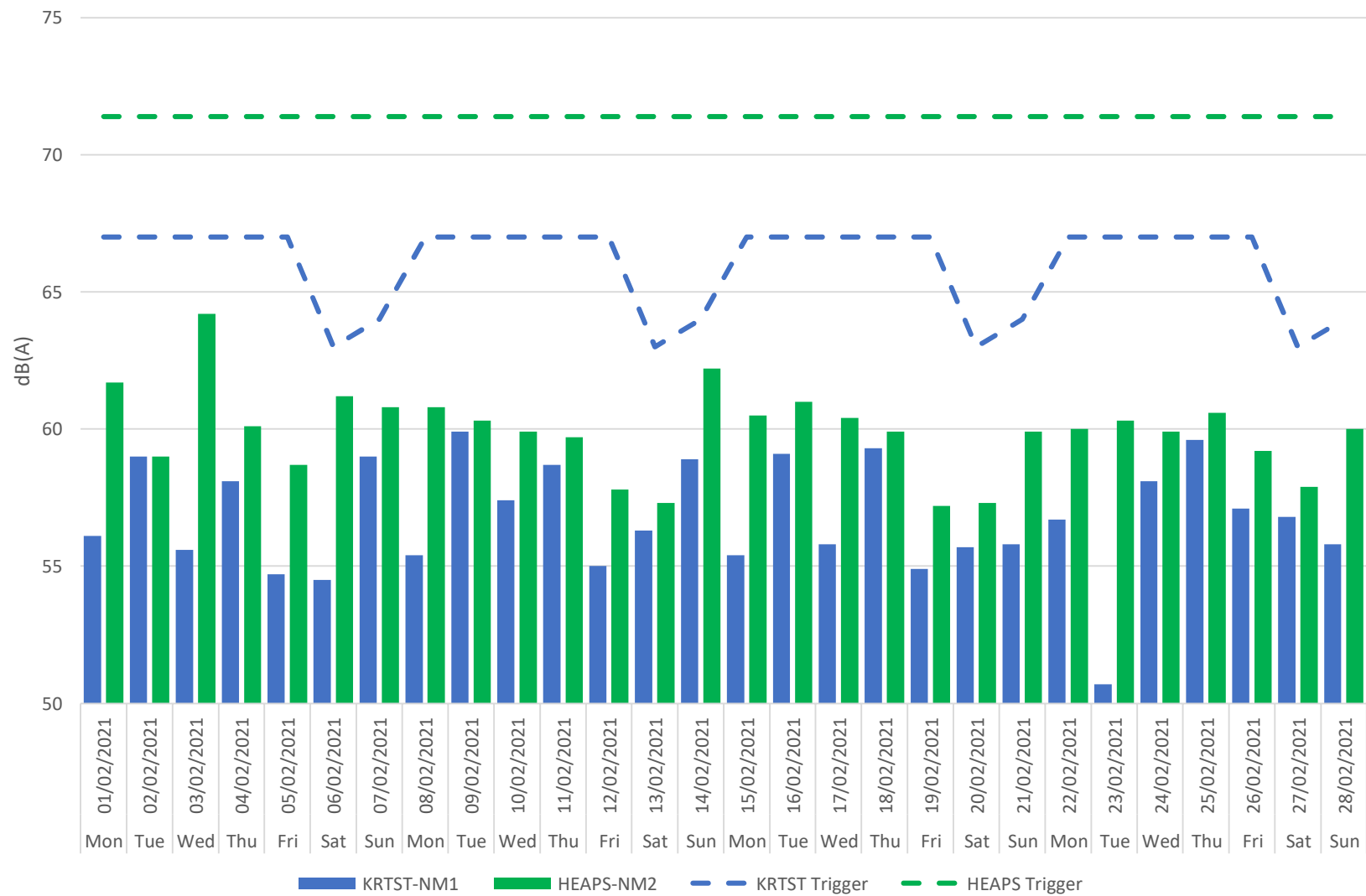
Daytime (Core) – February 2021



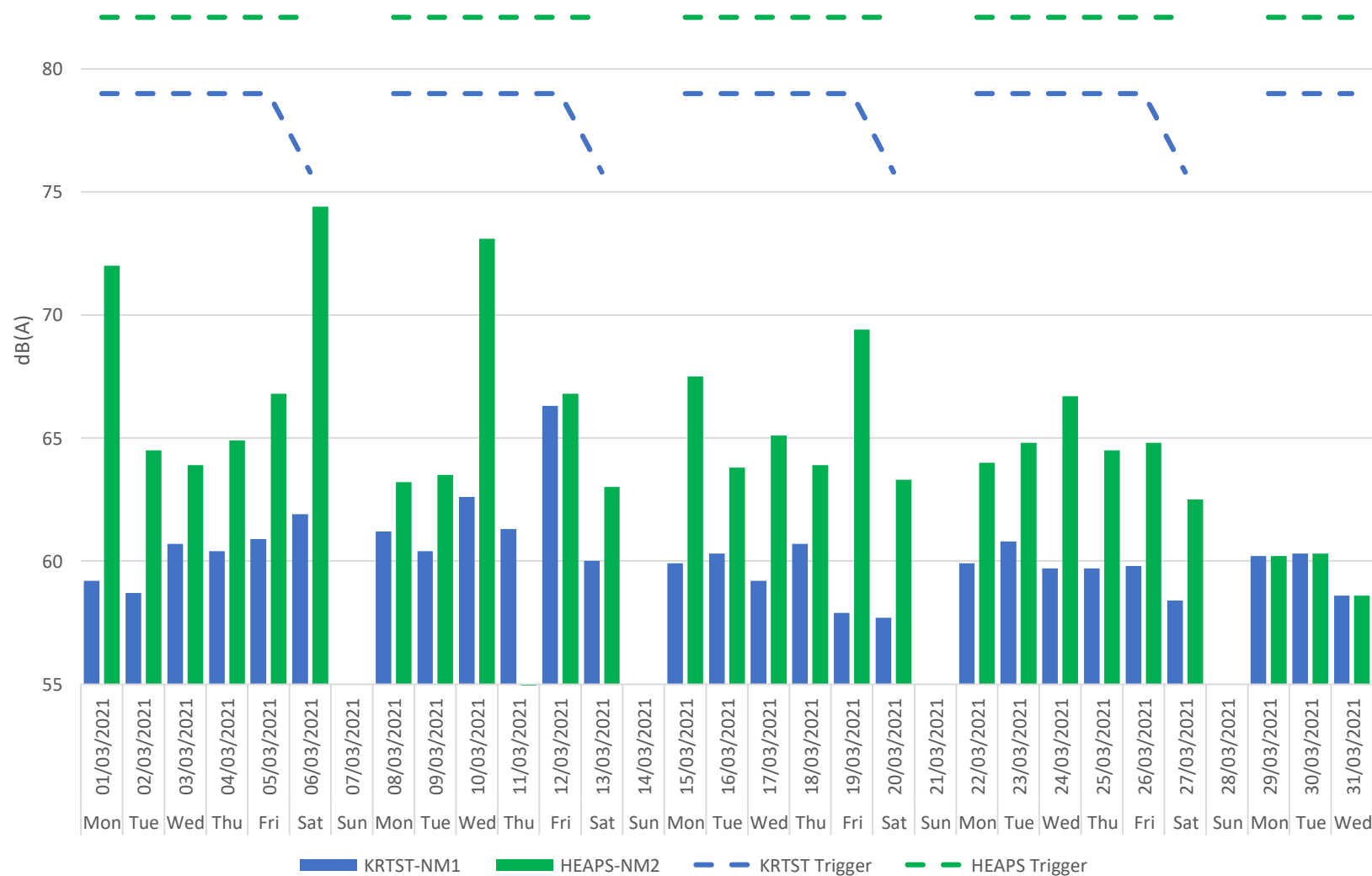
Evening (Extended) – February 2021



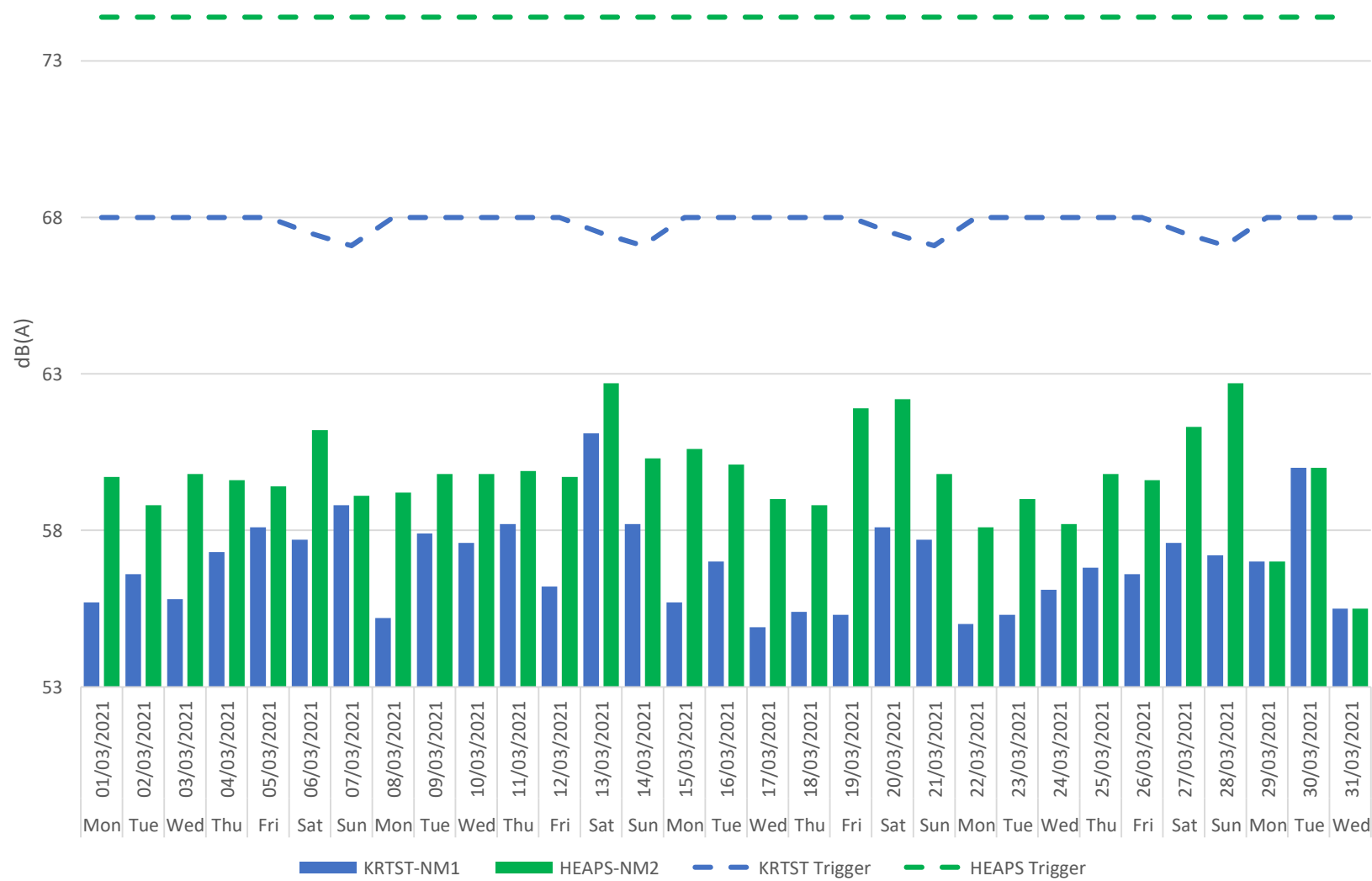
Night – February 2021



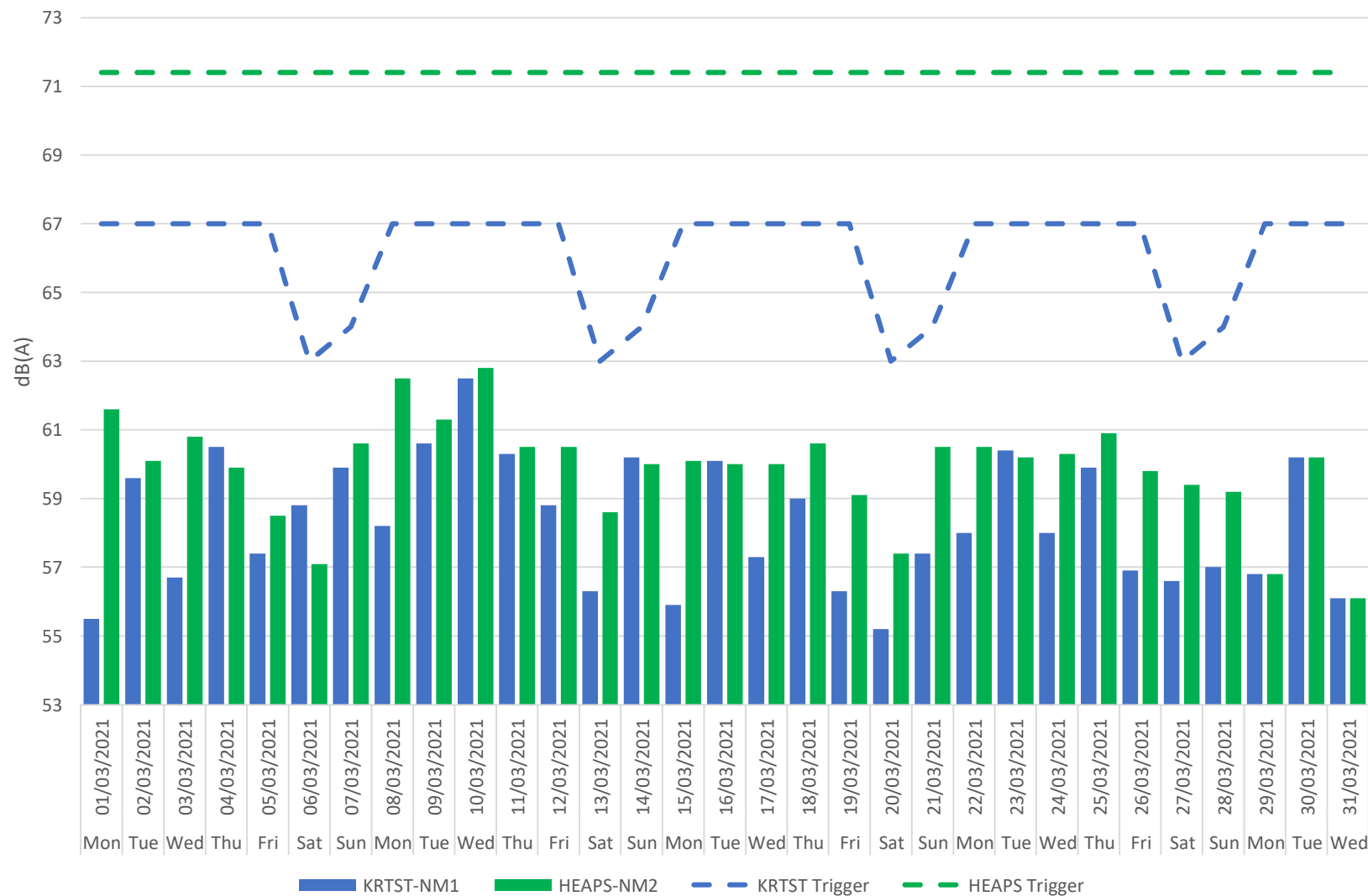
Daytime (Core) – March 2021



Evening (Extended) – March 2021



Night – March 2021



COMPENSATION AND MITIGATION

Louise Walsh
Compensation and Mitigation Lead

Compensation and Mitigation

How to make a claim if you are affected by Tideway's work

Who do I go to for advice?

- Independent Advisory Service (IAS) Helpline for independent advice: **0800 917 8845** or info@tidewayias.co.uk
- Tideway's Compensation and Mitigation Lead, Louise Walsh.
- For personal assistance and advice contact Louise: via Tideway Helpdesk **08000 30 80 80** or helpdesk@tideway.london or direct **07971 077165** or louise.walsh@tideway.london

How do I submit my claim?

- Louise can submit your claim to the Independent Compensation Panel (ICP) on your behalf or
- You can submit your claim direct to the ICP: admin@tidewayicp.london
- The IAS can send you a claim form, or you can download a claim form off the Tideway website

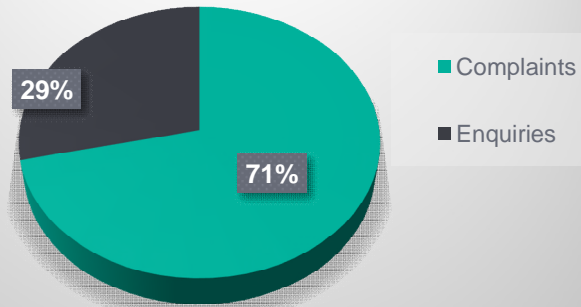


COMMUNITY ENGAGEMENT UPDATE

Alick Whitfield
Community Relations Manager

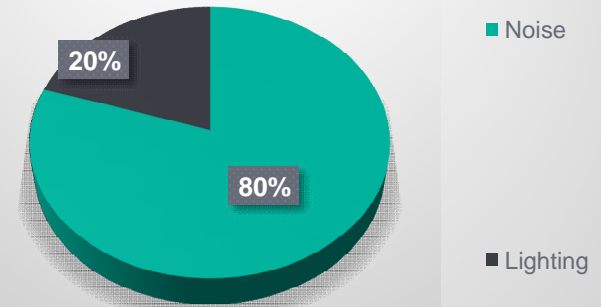
Complaints and Enquiries Jan – April 2021

Kirtling Street Complaints & Enquiries
Jan – April 2021

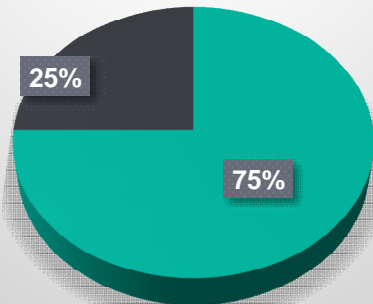


Complaints: 10 – Enquiries 4

Kirtling Street Complaints

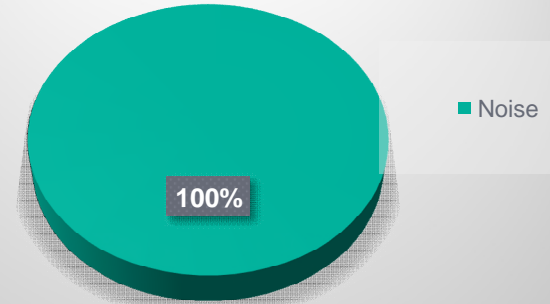


Heathwall Pumping Station Complaints & Enquiries
Jan – April 2021



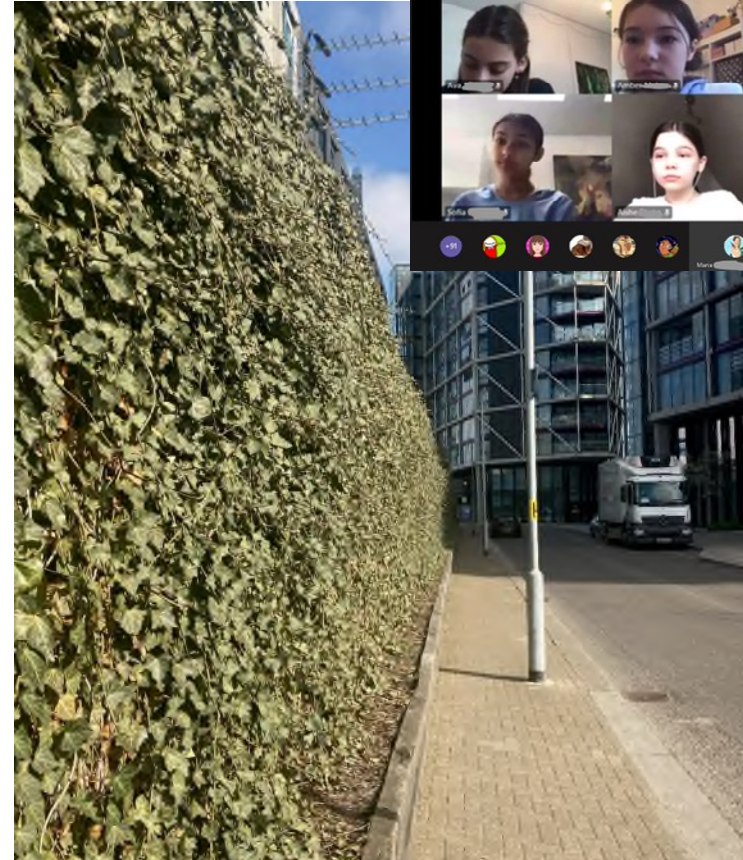
Complaints 3 – Enquiries 1

Heathwall Pumping Station Complaints



Community Engagement

- STEM events
- Construction Youth Trust – careers and interview advice
- City of London School for Girls – engineering day 2021
- Women into Construction – careers advice
- Kirtling Street Green Wall Maintenance – contract given to local resident to maintain and tidy the green wall along the site boundary
- South London Cares activity programme for the elderly
- IT workshops
- Chair Yoga
- Guide Dogs for the Blind
- Continue our sponsorship of two puppies for training
Meet Marley and Sprout



Q&A Open Discussion

To get in touch with our 24/7 Helpdesk,
please call **08000 30 80 80** or email
helpdesk@tideway.london



Tideway

RECONNECTING LONDON WITH THE RIVER THAMES

#SuperSewer

www.tideway.london