

# CHAMBERS WHARF

Online Community Liaison Working Group

Monday 26 April 2021



Tideway



# TIDEWAY PROJECT STAFF PRESENT



## **Presenting**

- Shannon O’Keeffe CEng MICE – Senior Tunnel Agent
- Rebecca Oyibo – Community Relations
- Louise Walsh - Mitigation and Compensation Lead

## **Present**

- Martin Griffiths - Senior Community Relations Manager
- Allen Summerskill - Stakeholder and Consents Manager
- Nico Donadoni – Tunnel Manager
- Georgia Boyd – Engagement Manager

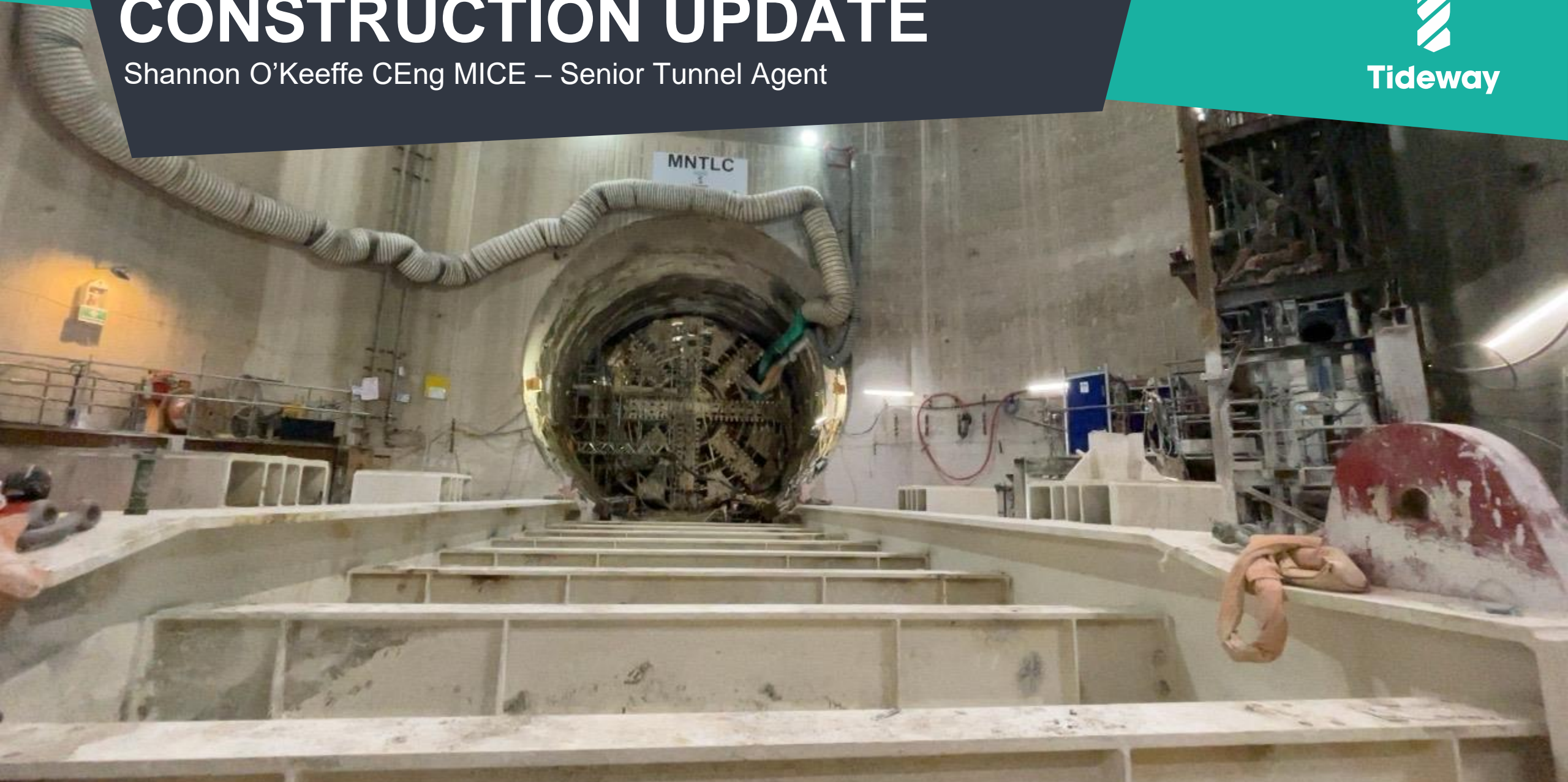


# CONSTRUCTION UPDATE

Shannon O'Keeffe CEng MICE – Senior Tunnel Agent



**Tideway**



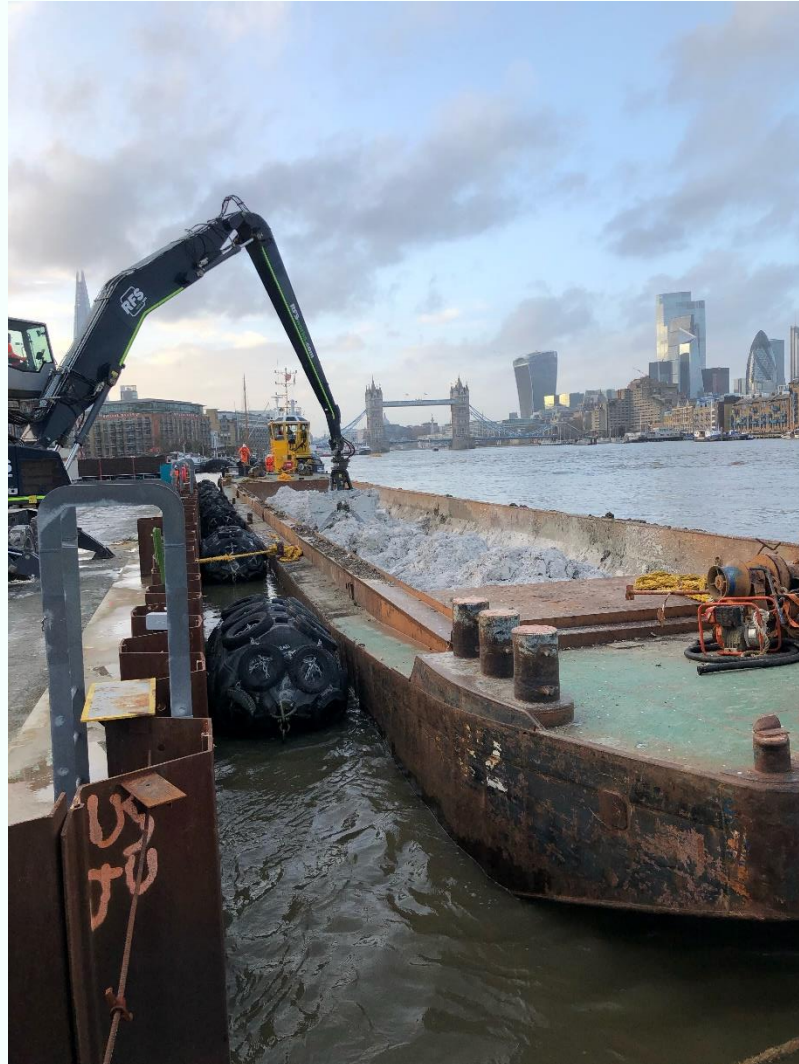
# TBM 'SELINA' DELIVERY & INSTALLATION



<https://vimeo.com/531676479/4ee75fb57a>

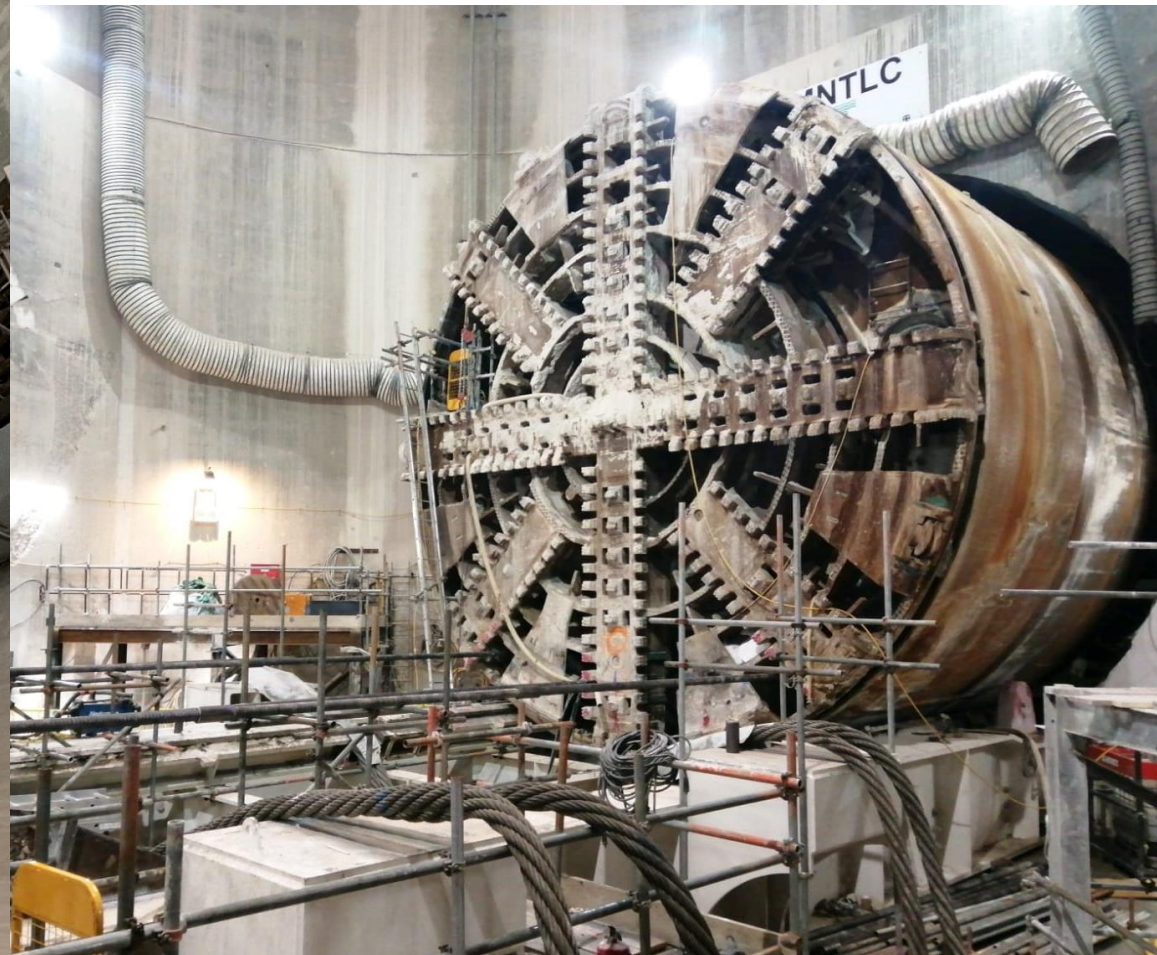
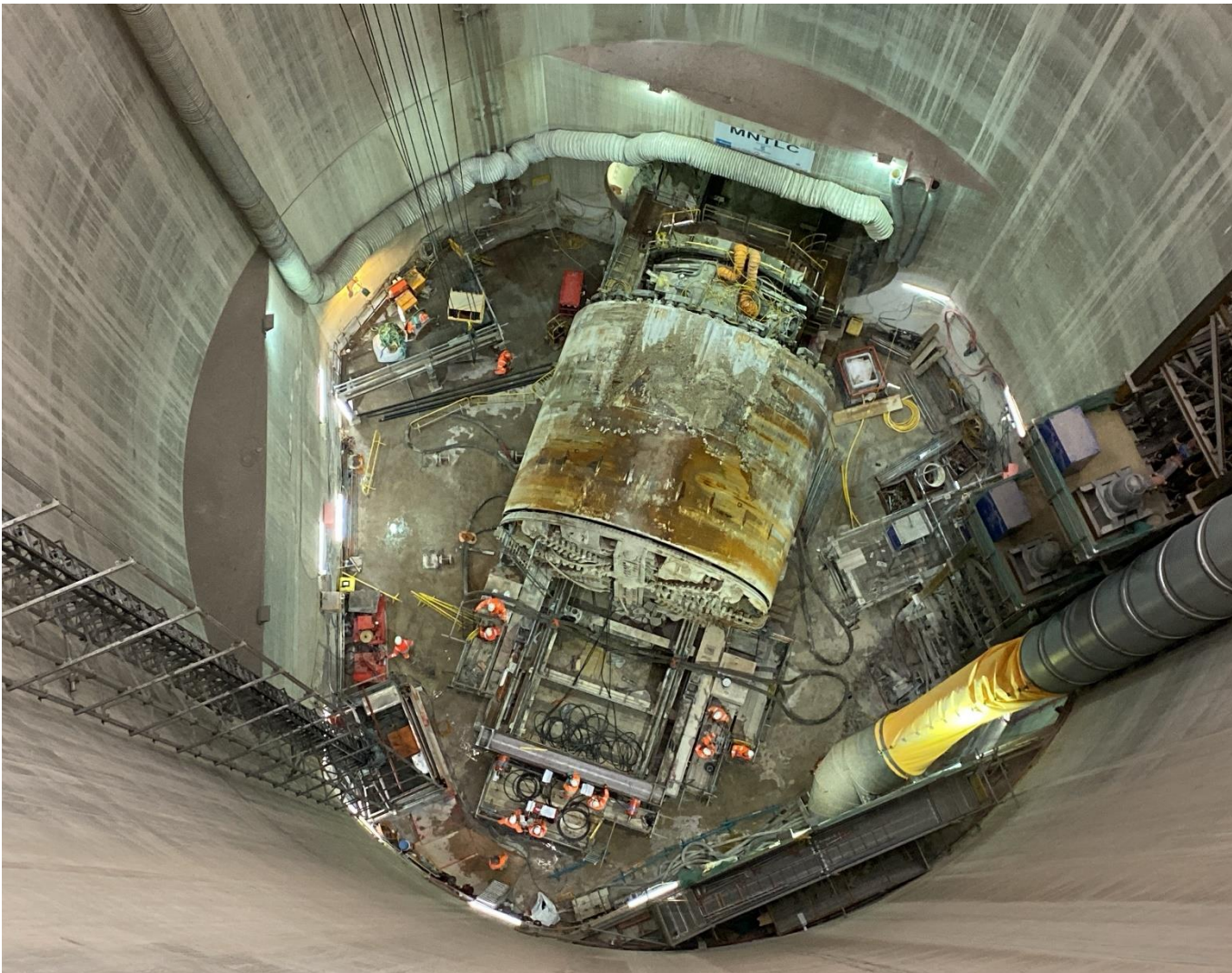


# TBM 'SELINA'



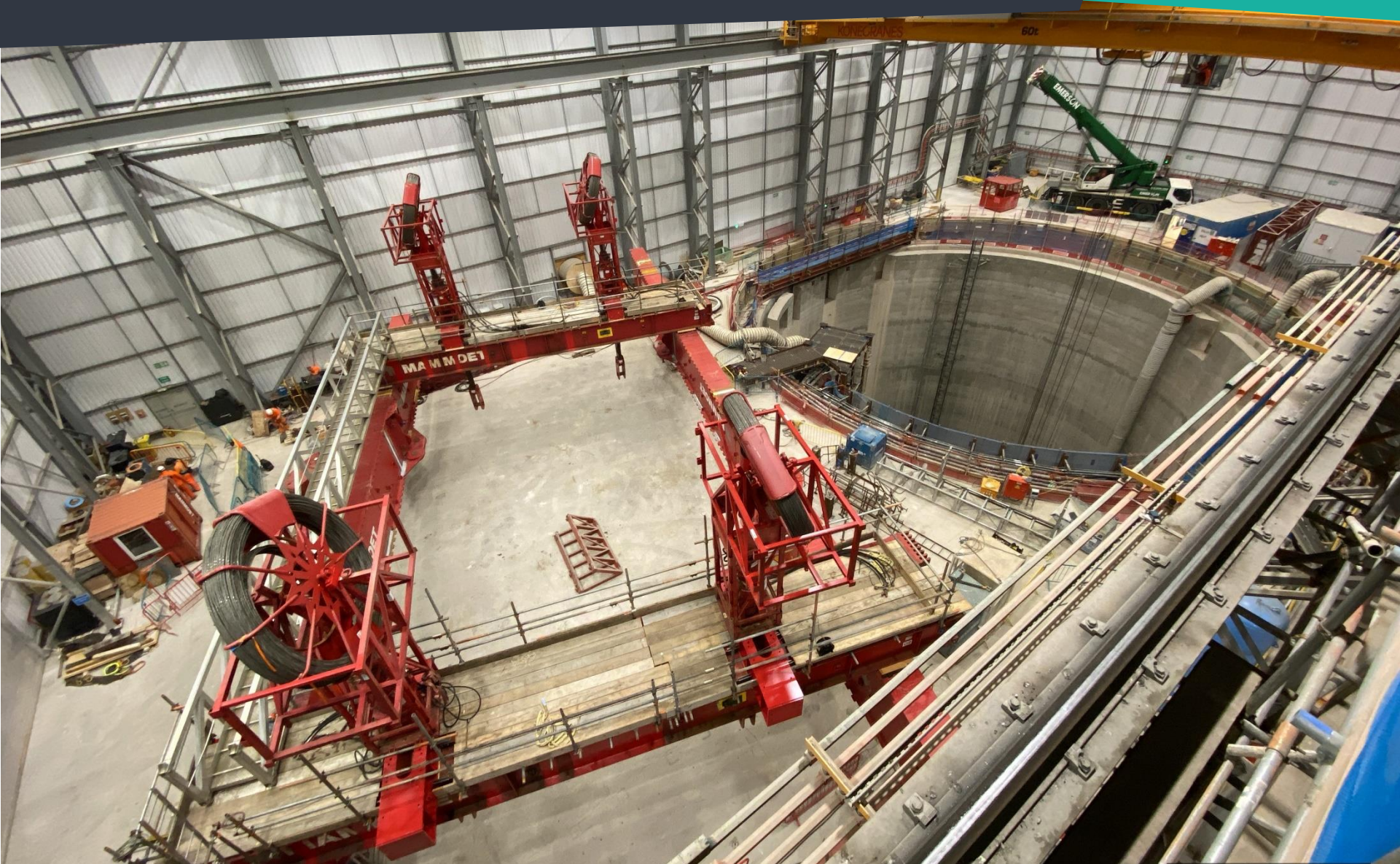


# REMOVAL OF TBM 'URSULA'





# REMOVAL OF TBM 'URSULA'





# REMOVAL OF TBM 'URSULA'





# SECTION 61 - OVERVIEW

Section 61 phase five for tunnelling works – approved by LB Southwark for October 2019 to June 2021

## Permitted Site Working Hours

### Standard Working Hours:

- 08:00 to 18:00 (Monday to Friday) and 08:00 to 13:00 (Saturday)

### Extended Working Hours

- 18:00 to 22:00 (Monday to Friday). 08:00 to 17:00 (Saturday)
- General works limited to tidally influenced marine movements, lighting (task specific) and gantry crane movements within shaft enclosure

### Continuous Working Hours (24/7)

Tunnelling and tunnel related activities such as;

- Tunnel & Acoustic Enclosure Works
- STP Operations
- Batching Plant Operations

### Mobilisation and demobilisation Hours •

- 07:00 to 08:00 and 18:00 to 19:00 (Monday to Friday).
- 07:00 to 08:00 and 13:00 to 14:00 (Saturday)
- 22:00 to 22:30 (Extended working hours activities) (Mon to Fri). 17:00 to 17:30 (Extended working on Saturdays)





# Approved S61 for tunnelling works – more detail

- This Section 61 agreement covers:

## Tunnelling

- Tunnelling will be a continuous activity: 24 hours / 7 days a week, ongoing now
- The slurry treatment plant will also run continuously to support tunnelling activities
- Ring Delivery and Spoil Loading by River during core and extended hours
- Crane movements to supply rings and equipment into the Shed during core hours



*Tunnel Ring Delivery by River*



# NOISE AND AIR QUALITY



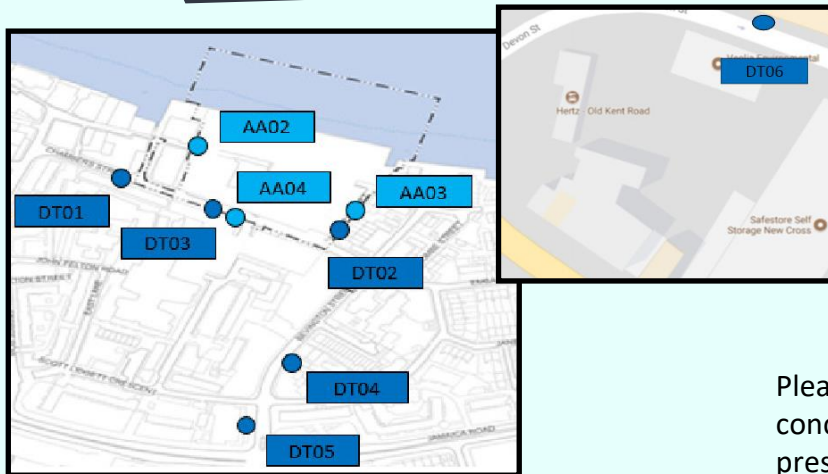
Tideway





# AIR AND NOISE QUALITY MONITORING

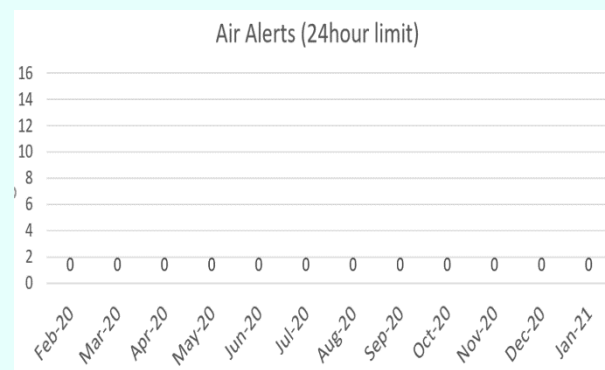
## JANUARY 2021



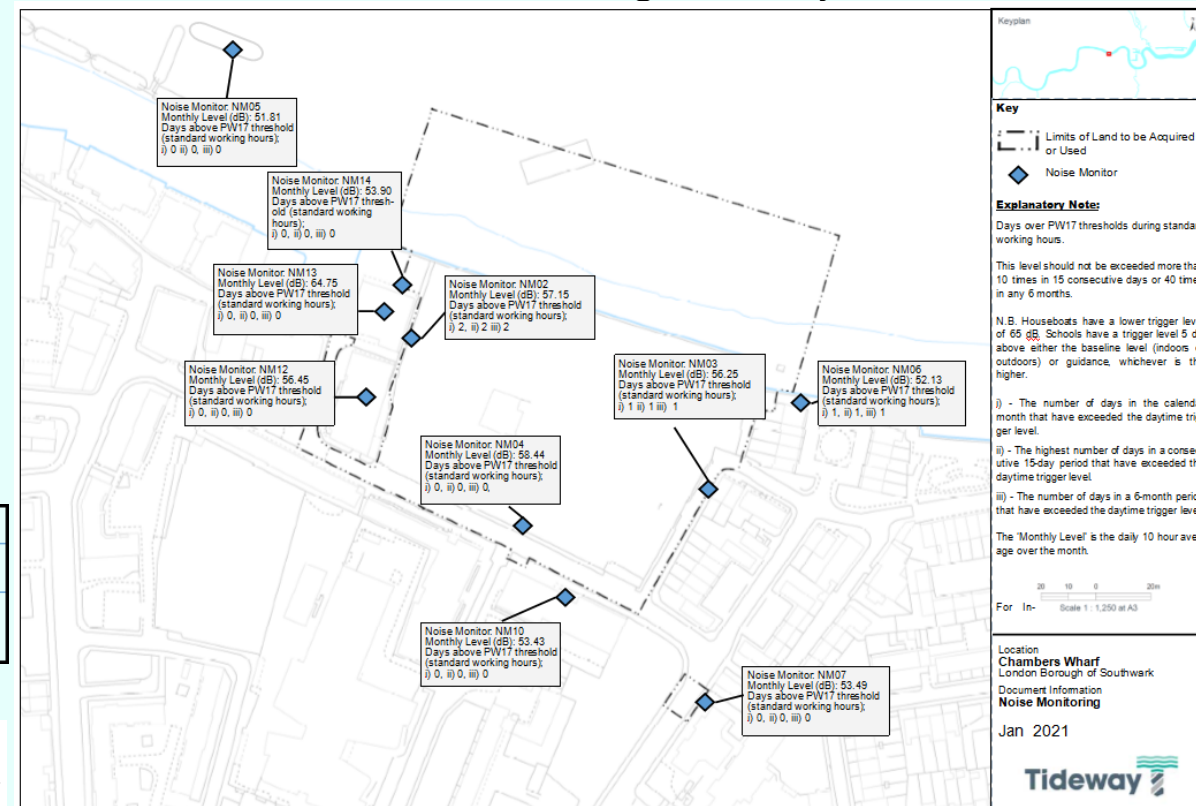
Please note that NO<sub>2</sub> pollutant concentration results are presented one month in arrears.

Location	UK Air Quality Objective	NO <sub>2</sub> µg/m <sup>3</sup>	Mean value for NO <sub>2</sub> µg/m <sup>3</sup>	Annual mean value for NO <sub>2</sub> µg/m <sup>3</sup> (with bias correction)
DT1	40	30.86	29.18	27.43
DT2		27.44	26.38	24.80
DT3		25.94	26.71	25.11
DT4		32.31	33.77	31.74
DT5		34.37	39.34	36.98
DT6		43.12	34.64	32.56
Monitoring period			Monitoring period	
02/12/2020	-	06/01/2021	08/01/2020	- 06/01/2021

Total Allowable Alerts	35 per year
Total May Alerts	0
Number of Alerts (12-month rolling)	0



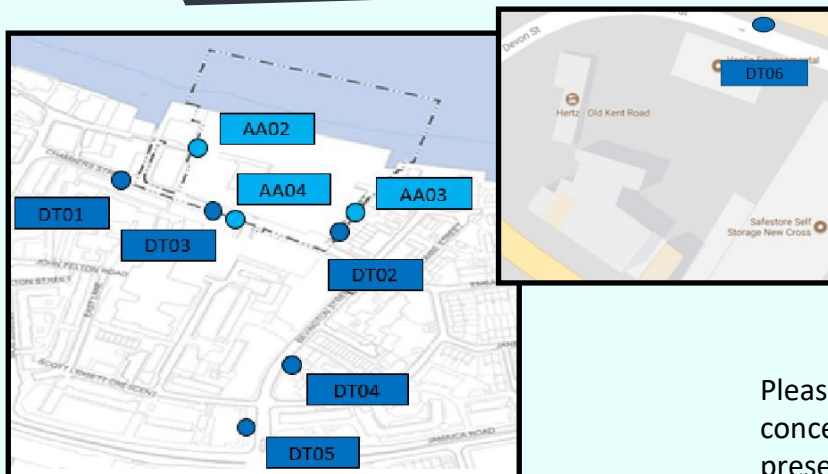
## Noise Monitoring January 2021





# AIR AND NOISE QUALITY MONITORING

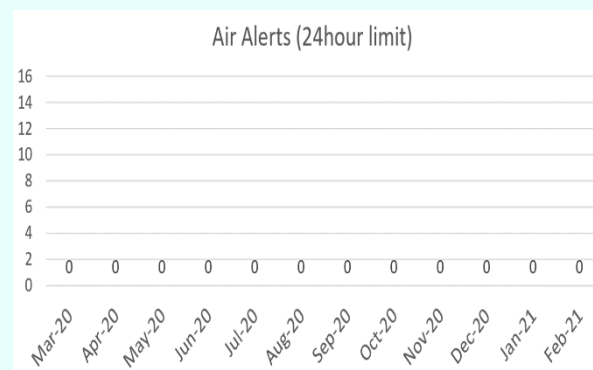
## FEBRUARY 2021



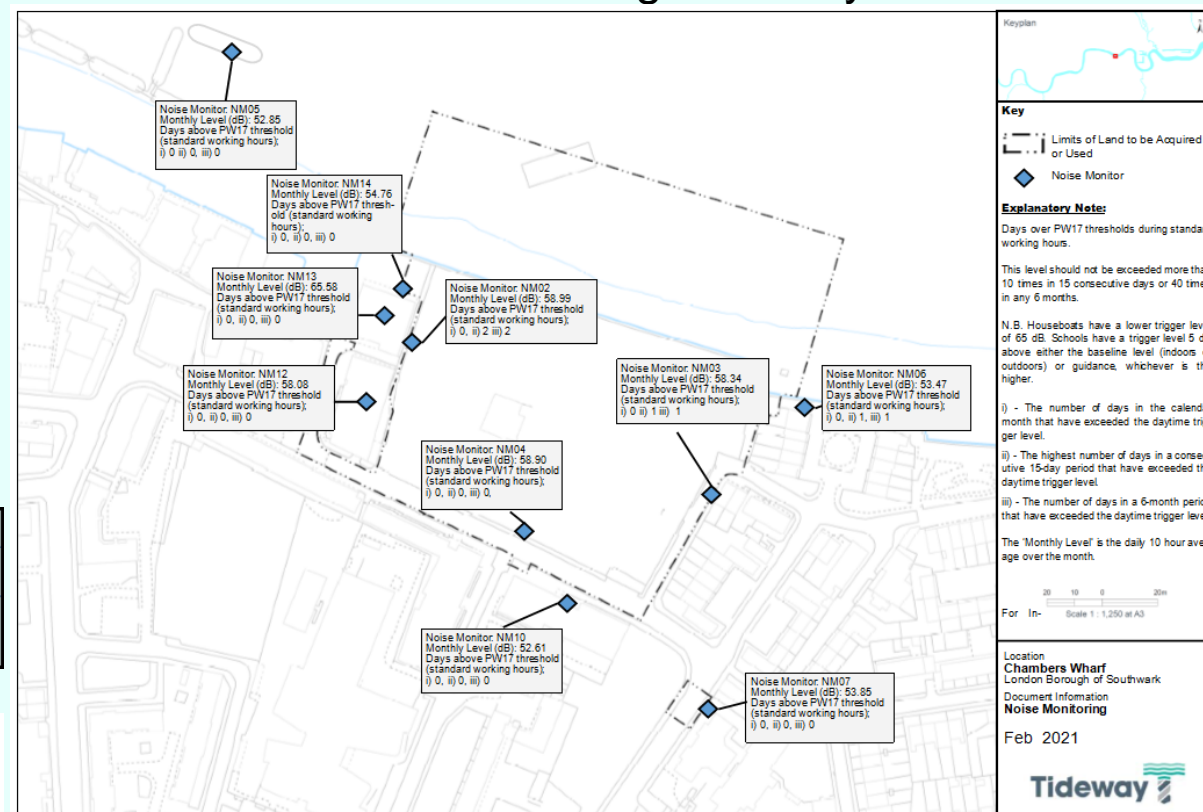
Please note that NO<sub>2</sub> pollutant concentration results are presented one month in arrears.

Location	UK Air Quality Objective	NO <sub>2</sub> µg/m <sup>3</sup>	Mean value for NO <sub>2</sub> µg/m <sup>3</sup>	Annual mean value for NO <sub>2</sub> µg/m <sup>3</sup> (with bias correction)
DT1	40	33.17	28.71	26.99
DT2		25.90	25.72	24.18
DT3		31.96	26.22	24.64
DT4		38.11	32.65	30.69
DT5		38.39	39.67	37.29
DT6		39.01	33.34	31.34
Monitoring period			Monitoring period	
06/01/2021	-	03/02/2021	05/02/2020	- 03/02/2021

Total Allowable Alerts	35 per year
Total May Alerts	0
Number of Alerts (12-month rolling)	0



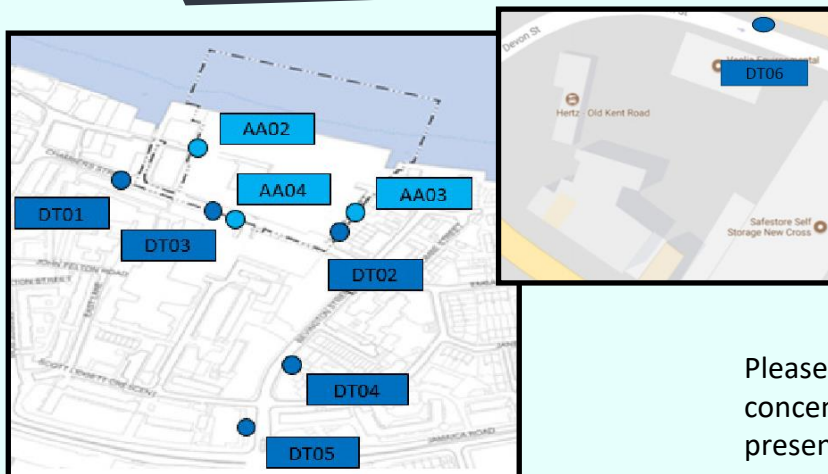
## Noise Monitoring February 2021





# AIR AND NOISE QUALITY MONITORING

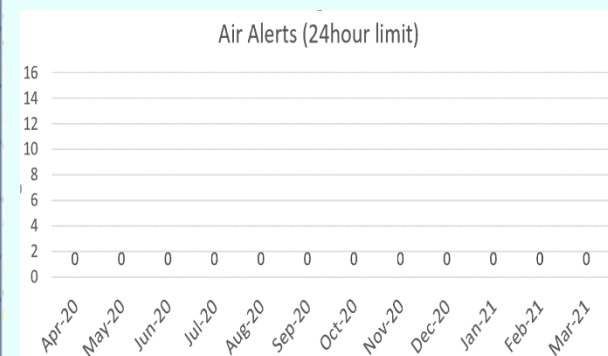
## MARCH 2021



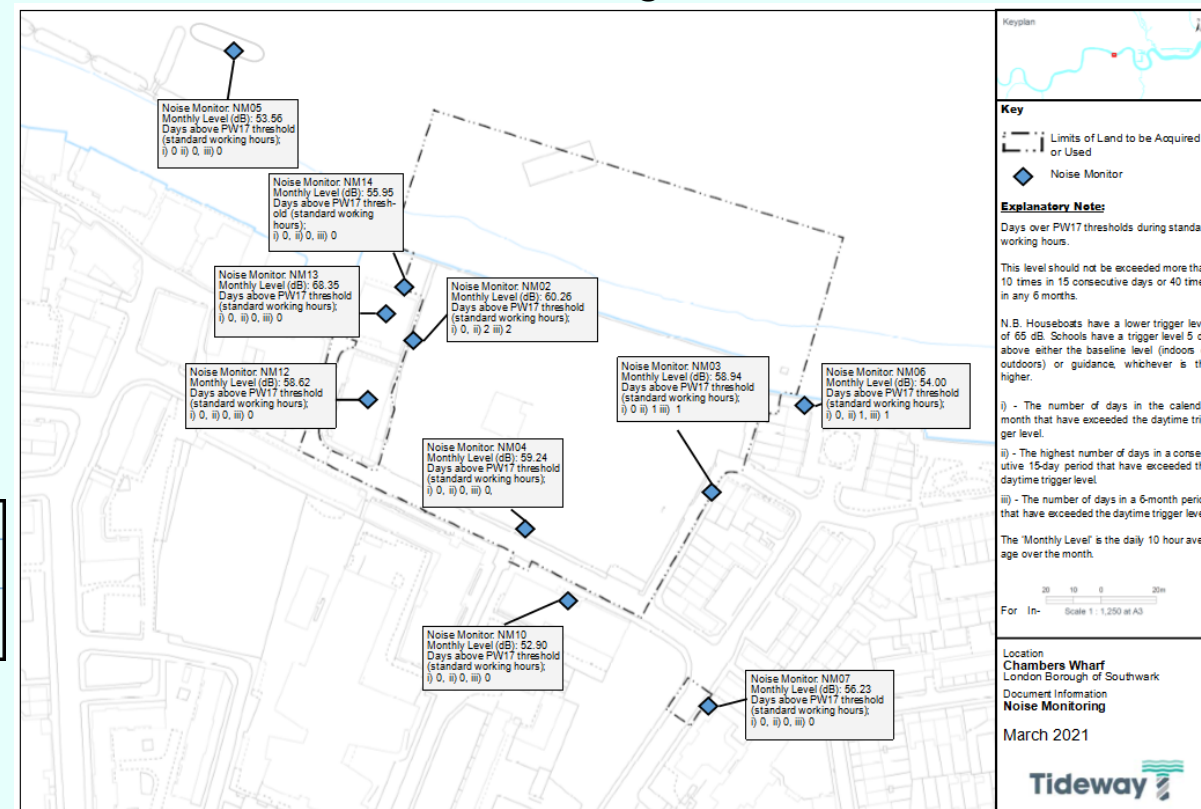
Please note that NO<sub>2</sub> pollutant concentration results are presented one month in arrears.

Location	UK Air Quality Objective	NO <sub>2</sub> µg/m <sup>3</sup>	Mean value for NO <sub>2</sub> µg/m <sup>3</sup>	Annual mean value for NO <sub>2</sub> µg/m <sup>3</sup> (with bias correction)
DT1	40	31.12	28.71	26.99
DT2		24.39	25.72	24.18
DT3		26.76	26.22	24.64
DT4		29.69	32.65	30.69
DT5		32.45	39.67	37.29
DT6		33.74	33.34	31.34
Monitoring period			Monitoring period	
03/02/2021	-	03/03/2021	04/03/2020	- 03/03/2021

Total Allowable Alerts	35 per year
Total May Alerts	0
Number of Alerts (12-month rolling)	0



## Noise Monitoring March 2021





# 6 MONTH PROGRAMME

May 2021 and beyond...



Tideway

Programme Overview														
	May		June		July		August		September		October		November	
TBM C 'Ursula Removal'														
Tunnelling Setup to Resume TBM D 'Selina'														
TBM D 'Selina' Tunnelling Operations														
River Barge Operations (Ring Deliveries & Spoil Loading)														
Tunnel Deliveries (Consumables, Cement, Bentonite)***														
General Site Operation & Maintenance														

\*\*\* (08:00 - 18:00) Monday to Friday, (08:00 - 17:00) Saturday & Sunday  
Subject to LBS Consideration and approval



Standard Working Hours

Extended & Continuous Working Hours

Continuous Operations Working Hours

(08:00 - 18:00) Monday to Friday, (08:00 - 13:00) Saturday

(08:00 - 22:00) Monday to Friday, (08:00 - 17:00) Saturday & Sunday

(08:00 - 08:00) Monday to Sunday

The construction of the Thames Tideway Tunnel is anticipated to finish by 2023. The commissioning phase of the project, will continue into 2024.



# LEGACY AND COMMUNITY INVESTMENT

Rebecca Oyibo – Community Relations



Tideway





# KICKSTART



New government initiative to help young people disadvantaged by COVID 19 and the pandemic.

- CHAWF - Accounts Assistant
- CHAWF - Software Engineering Assistant
- EARPS - Assistant Engineer
- GREPS - H&S Support Assistant

1. Start date June 2021 – 6 month placement for 25 hrs a week
2. Extended work placement to learn about a particular discipline

Volunteering Opportunities – Mentoring / Buddy to Kickstart young person

For more information go to : [Kickstart Scheme - GOV.UK \(www.gov.uk\)](https://www.gov.uk/kickstart)



**Prince's Trust**

**KICKSTART  
SCHEME**

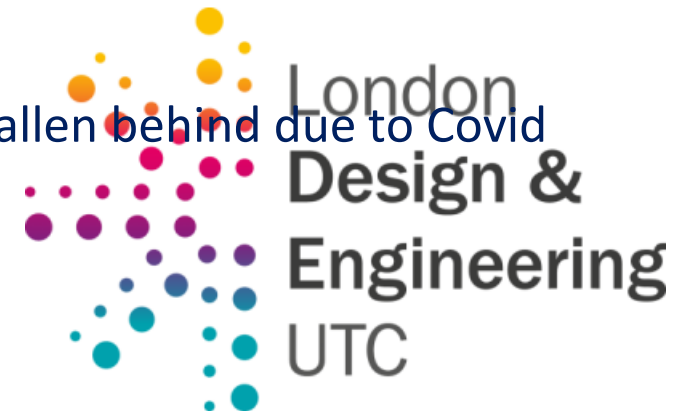
# LONDON DESIGN AND ENGINEERING UTC



- The college opened on the 3<sup>rd</sup> of September 2016
- Since the inception of the college Tideway has volunteered 1279.5 hours towards the progress of the LDE UTC 1279.5
- Our colleagues have taken their governor roles very seriously, Jeremy Galpin is the Chair of the Board of Governors and Lucy Webster is a Board member.

## Volunteering Opportunities -

1. September 2021 – we are providing mentoring support to students that have fallen behind due to Covid 19 and the pandemic.
2. Ongoing STEM activities





## STEM ambassadors (Science Technology Engineering and Maths)



Tideway East are working with local schools to promote STEM subjects and the great variety of opportunities that the sector has to offer.

STEM ambassadors and getting involved is easier than ever with everything done on line.

[Local STEM Ambassador Hubs](#) | [STEM](#)

*Careers information and advice - Achieving Gatsby benchmarks - Diversity and inclusion - Enterprise and innovation - Improving social mobility*



# MITIGATION



Tideway





## How To Make A Claim if Affected By Tideway's Work

### Who do I go to for advice?

Independent Advisory Service (IAS) Helpline for independent advice:

- 0800 917 8845 or [info@tidewayias.co.uk](mailto:info@tidewayias.co.uk)
- Tideway's Compensation Lead, Louise Walsh, for personal assistance and advice
  - Helpdesk: 08000 30 80 80 / [helpdesk@tideway.london](mailto:helpdesk@tideway.london) or
  - Direct: 07971 077165 / [louise.walsh@tideway.london](mailto:louise.walsh@tideway.london)

### How do I submit my claim?

Louise can submit your claim to the Independent Compensation Panel (ICP) on your behalf, or you can submit your claim direct to the ICP: [admin@tidewayicp.london](mailto:admin@tidewayicp.london)

The IAS can send you a claim form, or you can download the form off the Tideway website: [www.tideway.london/help-advice/compensation-information/Independent-Compensation-Panel](http://www.tideway.london/help-advice/compensation-information/Independent-Compensation-Panel)

# THANK YOU



# Any Questions





## Contact US

If you do have any questions or enquiries, please contact the Tideway Helpdesk:

Telephone: **0800 030 80 80**

Email: **[Helpdesk@Tideway.London](mailto:Helpdesk@Tideway.London)**



**Tideway**

# **RECONNECTING LONDON WITH THE RIVER THAMES**

**#SuperSewer**

[www.tideway.london](http://www.tideway.london)