

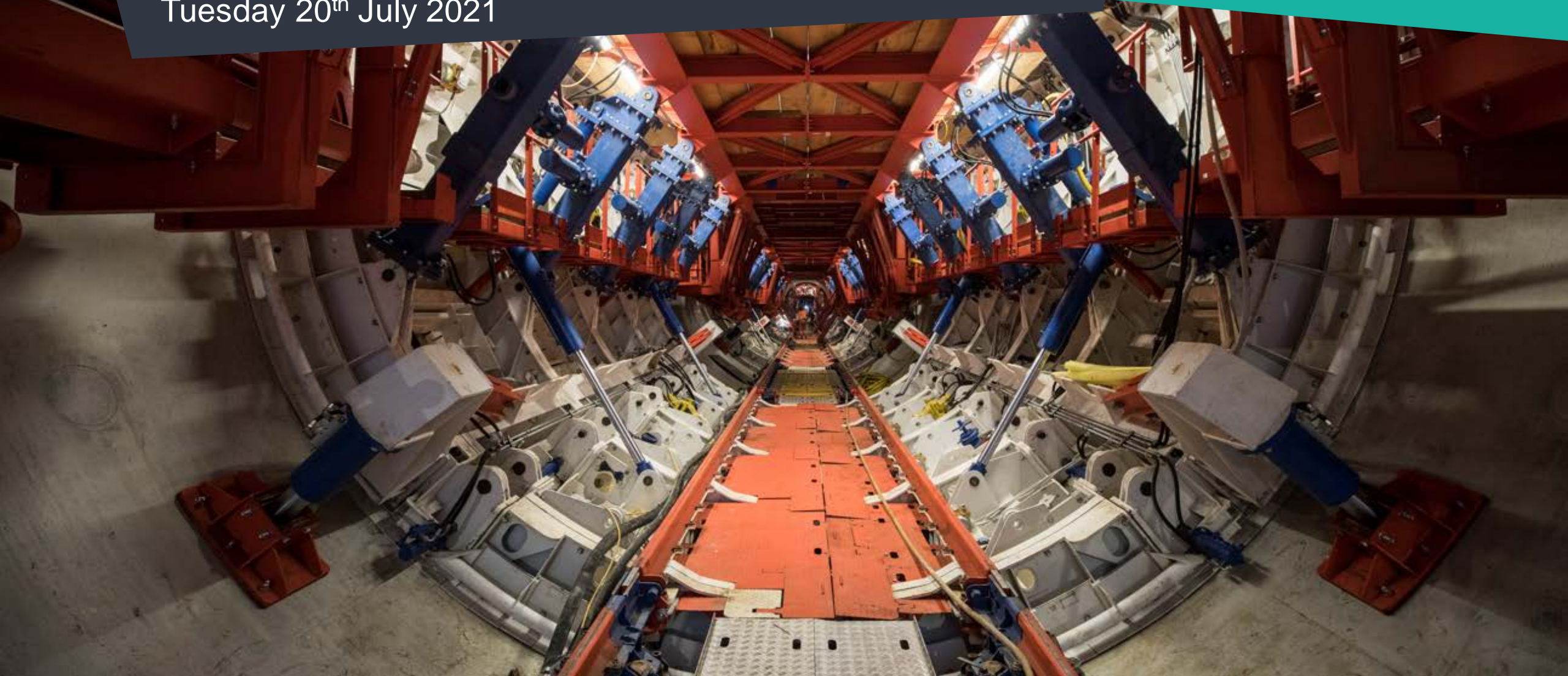
# ACTON STORM TANKS

Community Liaison Working Group

Tuesday 20<sup>th</sup> July 2021



Tideway

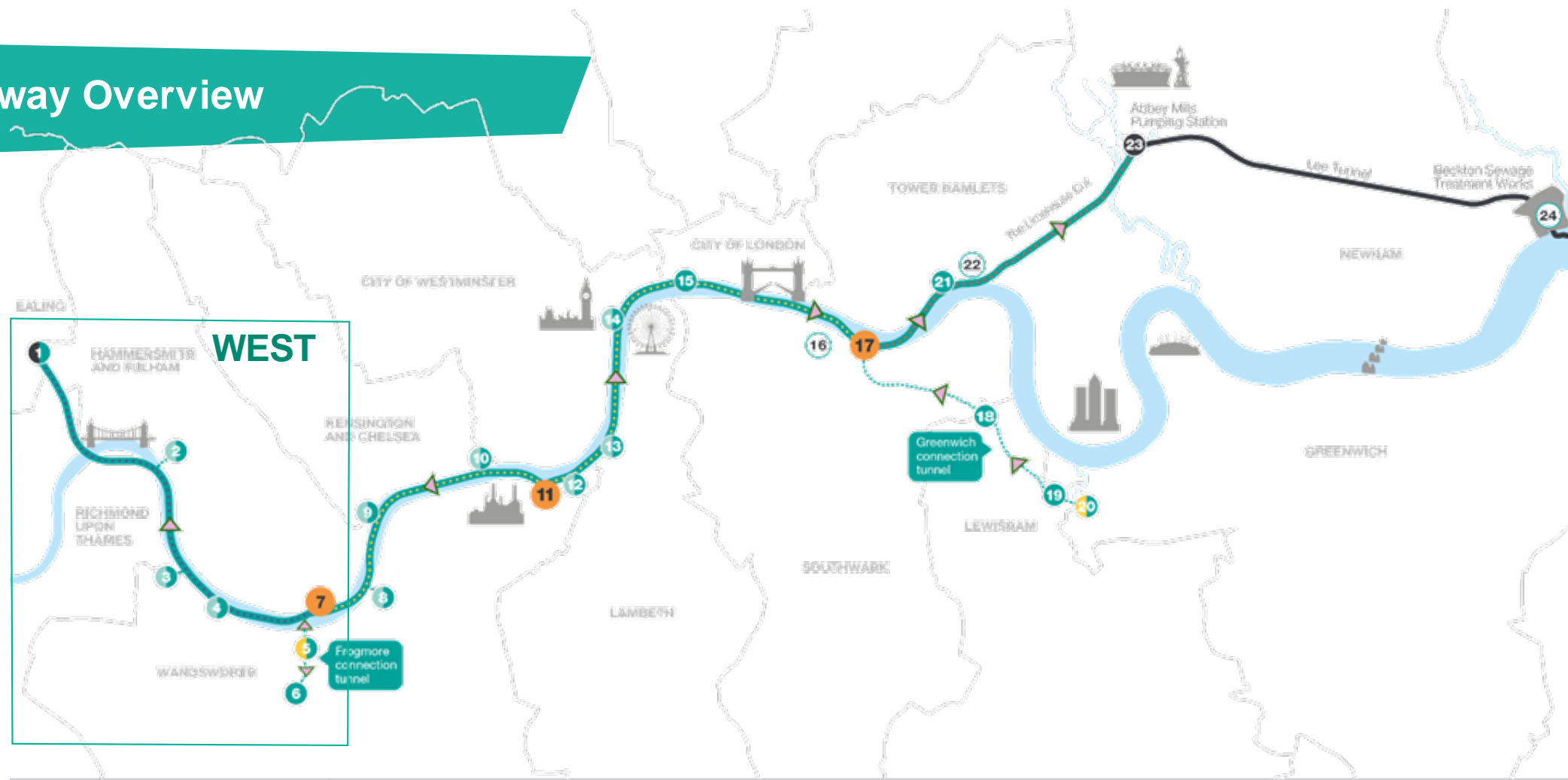




**WELCOME**

**Josh Roy, Section Manager**

# Tideway Overview



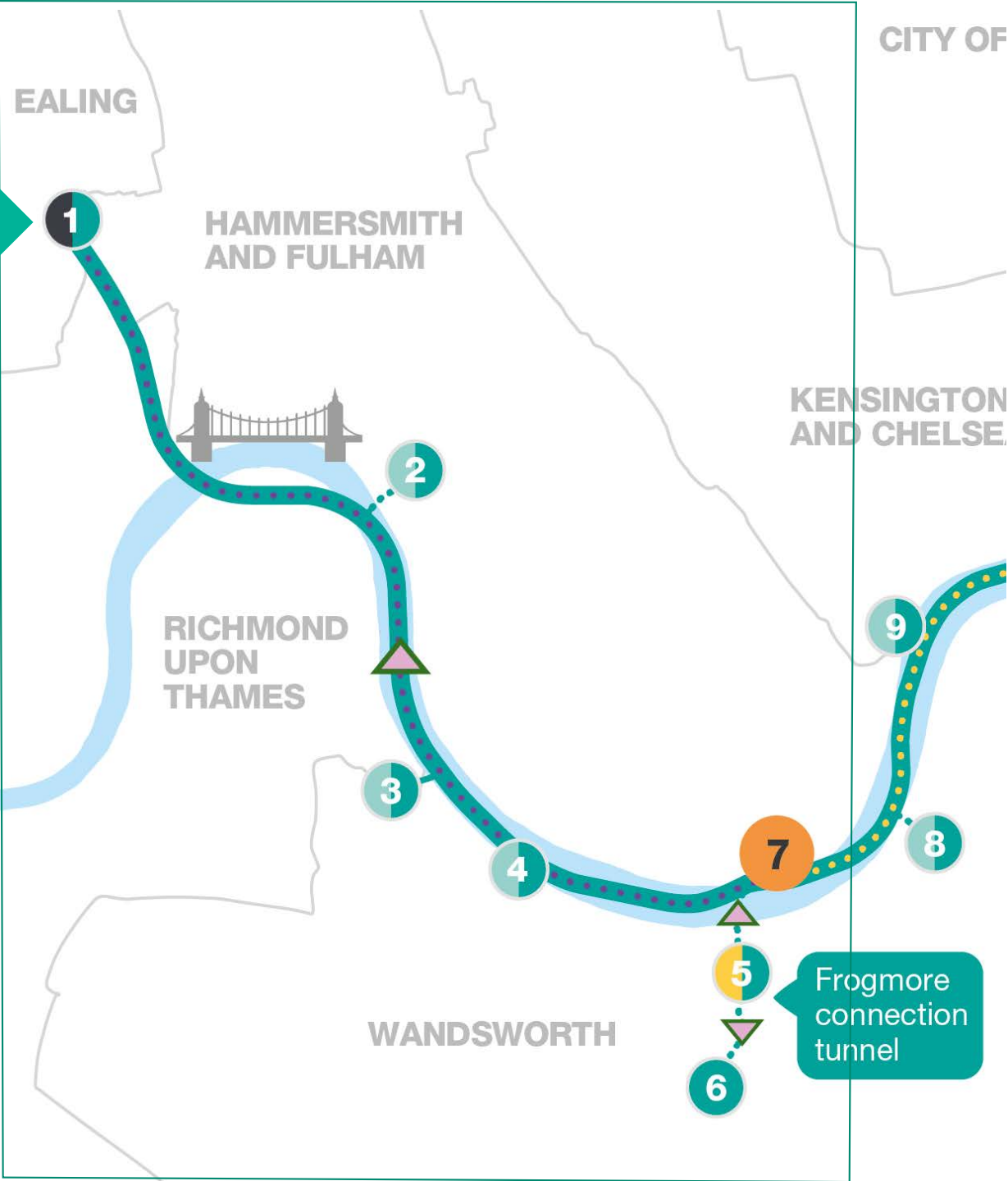
## Map key

- |                                      |                            |                               |                                  |  |
|--------------------------------------|----------------------------|-------------------------------|----------------------------------|--|
| ● Main tunnel drive tunnel site      | — Main tunnel              | 1 Acton Storm Tanks           | 9 Cremorne Wharf Depot           | 17 Chambers Wharf                      |
| ● Main tunnel reception site         | - - - Connection Tunnels   | 2 Hammersmith Pumping Station | 10 Chelsea Embankment Foreshore  | 18 Earl Pumping Station                |
| ● CSO site                           | — Lee Tunnel               | 3 Barn Elms                   | 11 Kirtling Street               | 19 Deptford Church Street              |
| ● Short connection tunnel drive site | ◀ Proposed drive direction | 4 Putney Embankment Foreshore | 12 Heathwall Pumping Station     | 20 Greenwich Pumping Station           |
| ● Long connection tunnel drive site  | - - - West works site      | 5 Dormay Street               | 13 Albert Embankment Foreshore   | 21 King Edward Memorial Park Foreshore |
| ○ System modifications               | - - - Central works sites  | 6 King George's Park          | 14 Victoria Embankment Foreshore | 22 Bekesbourne Street                  |
|                                      | - - - East works site      | 7 Camrath Road Riverside      | 15 Blackfriars Bridge Foreshore  | 23 Abbey Mills Pumping Station         |
|                                      |                            | 8 Falconbrook Pumping Station | 16 Shad Thames Pumping Station   | 24 Beckton Sewage Treatment Works      |



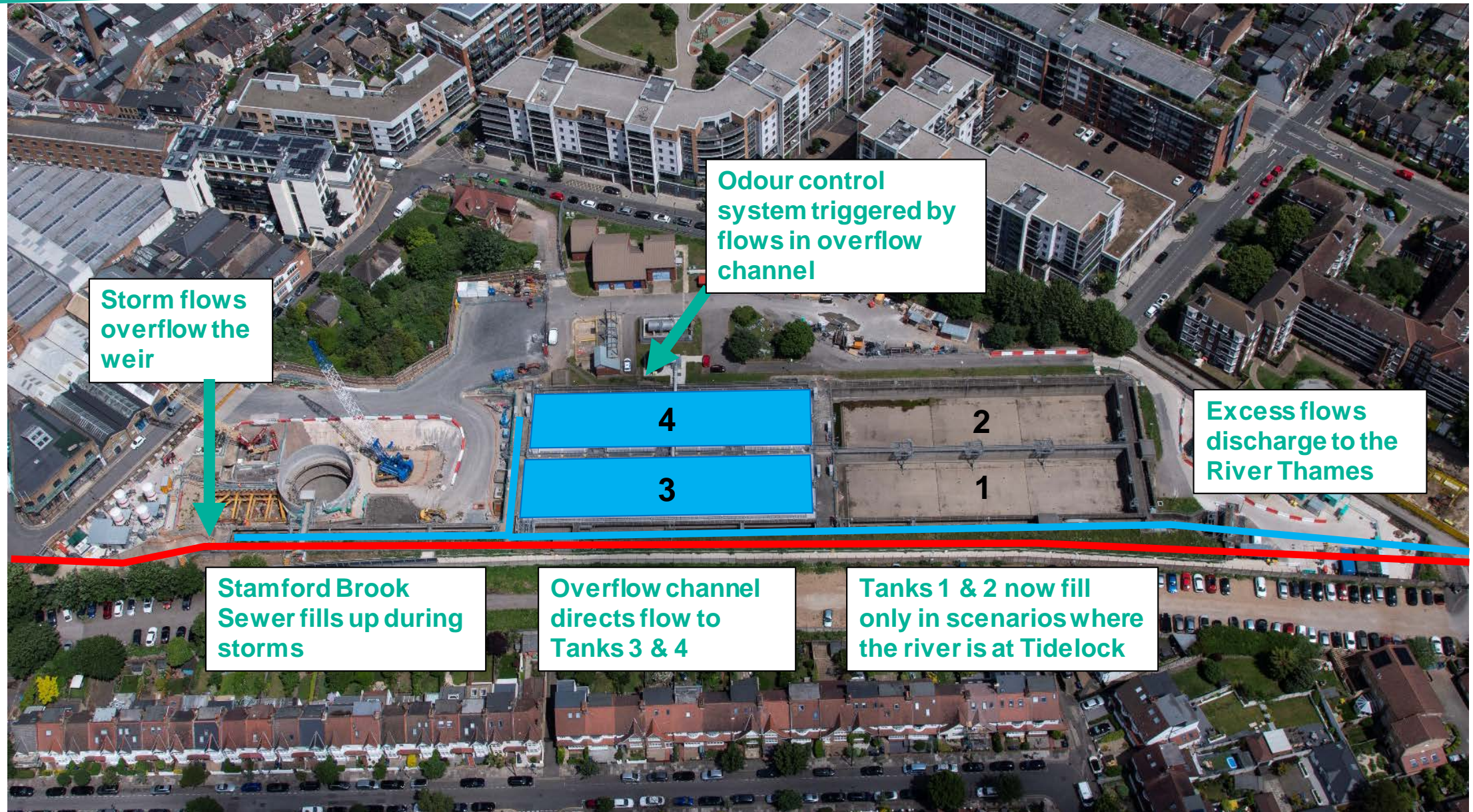
# Tideway West

Acton Storm Tanks



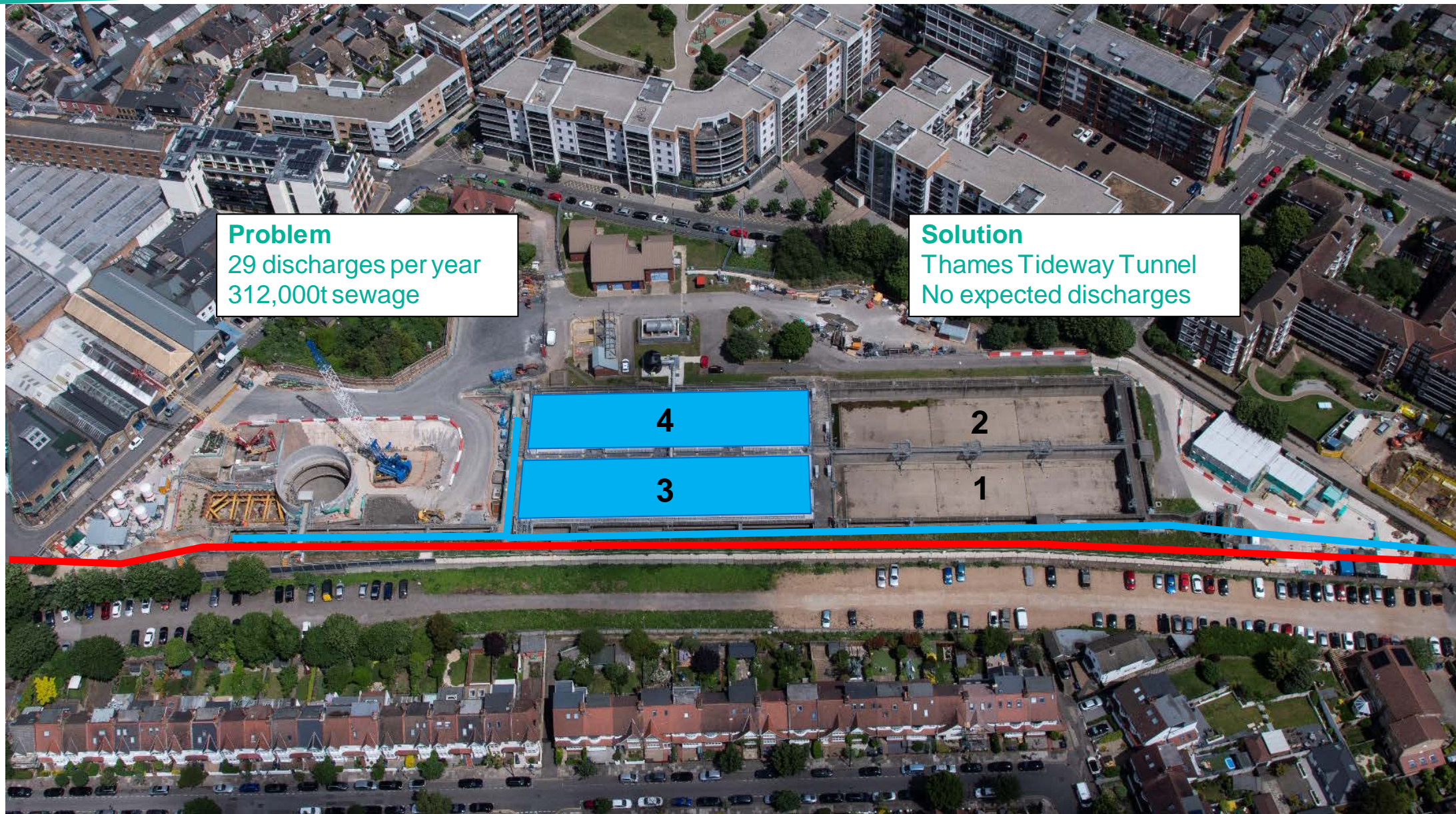


# Acton Storm Tanks





# Acton Storm Tanks



## Problem

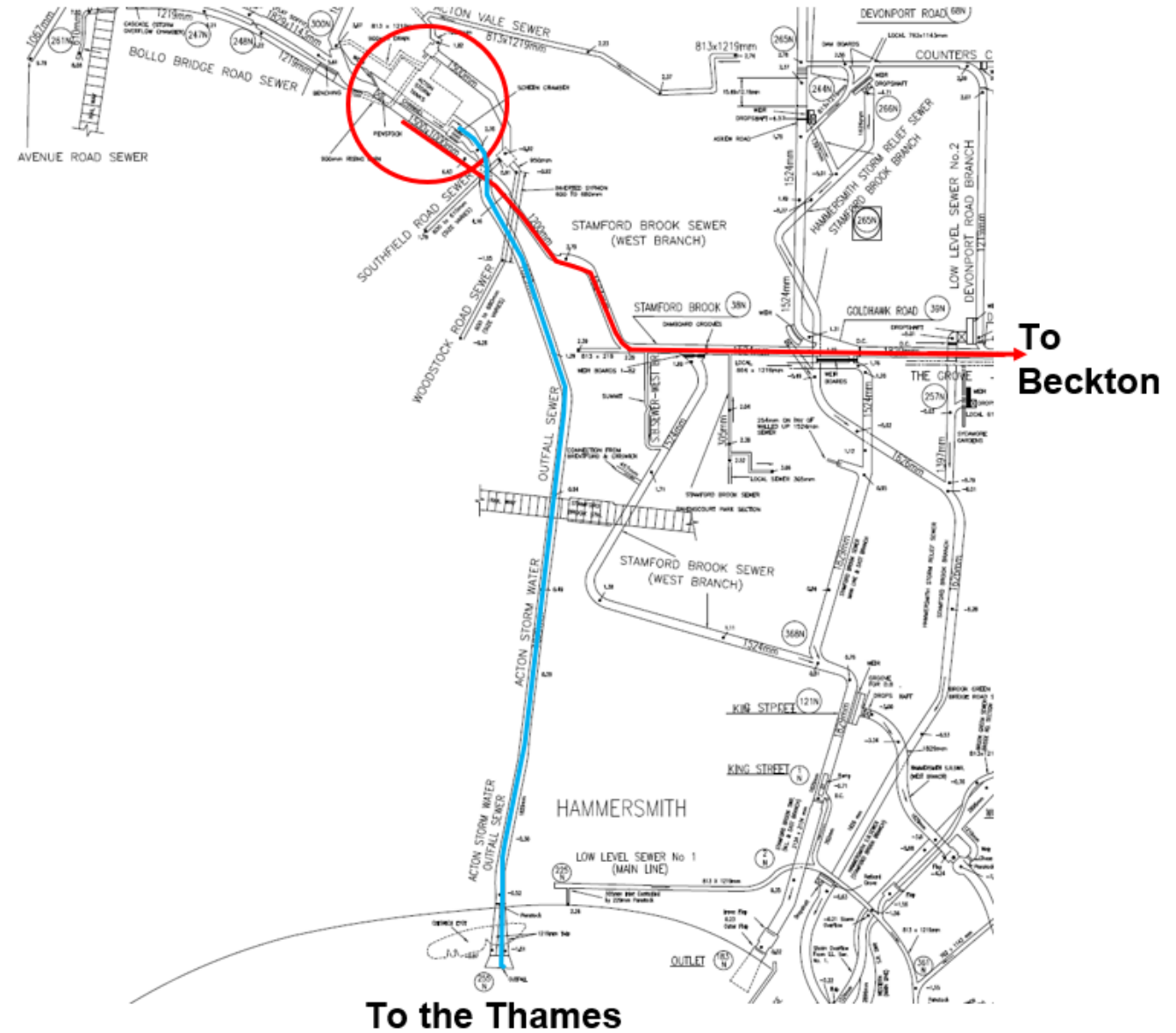
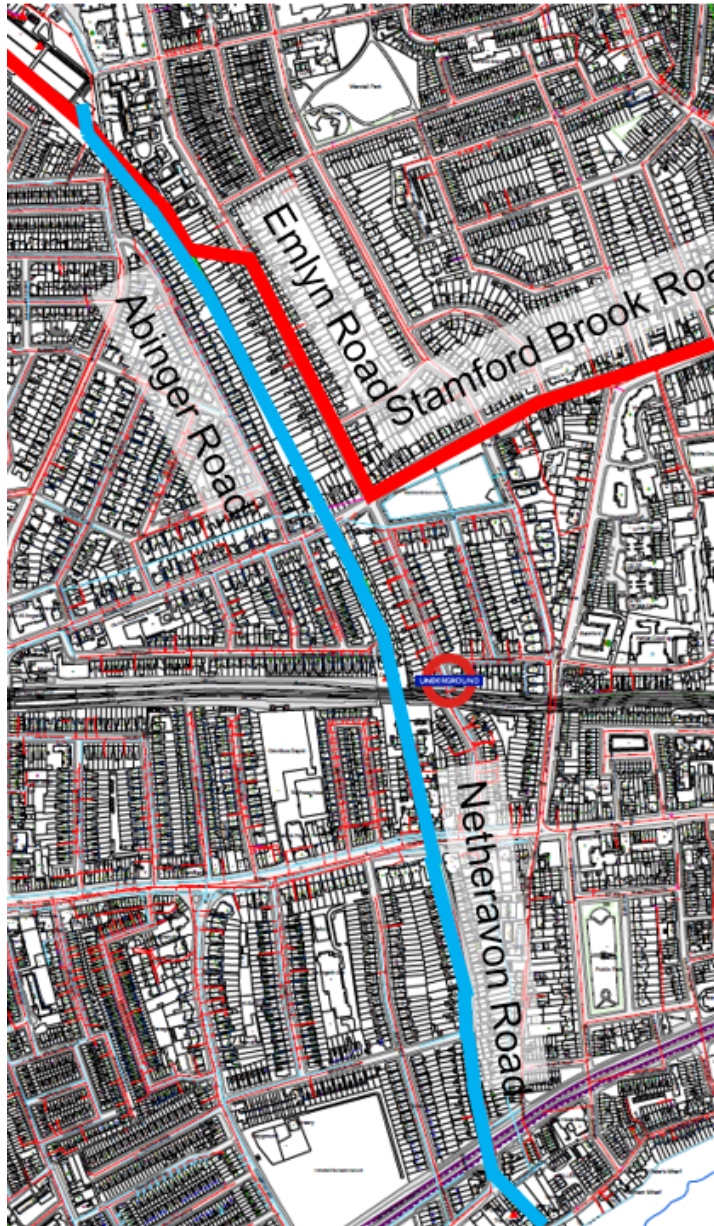
29 discharges per year  
312,000t sewage

## Solution

Thames Tideway Tunnel  
No expected discharges



## TWUL Network





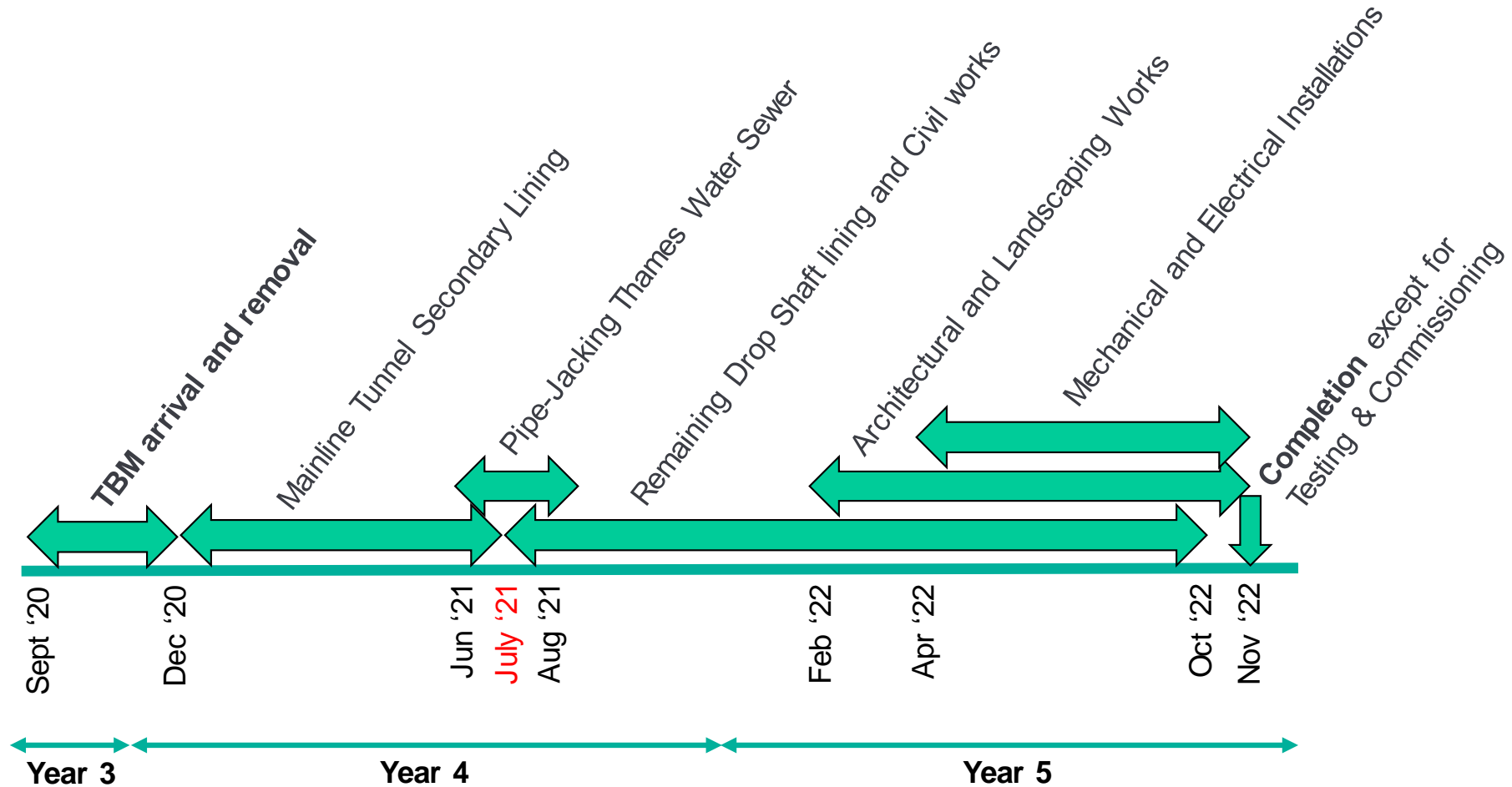
# What we are doing





# Timeline

- BMB took possession of the site in November 2017.





Last 5 months

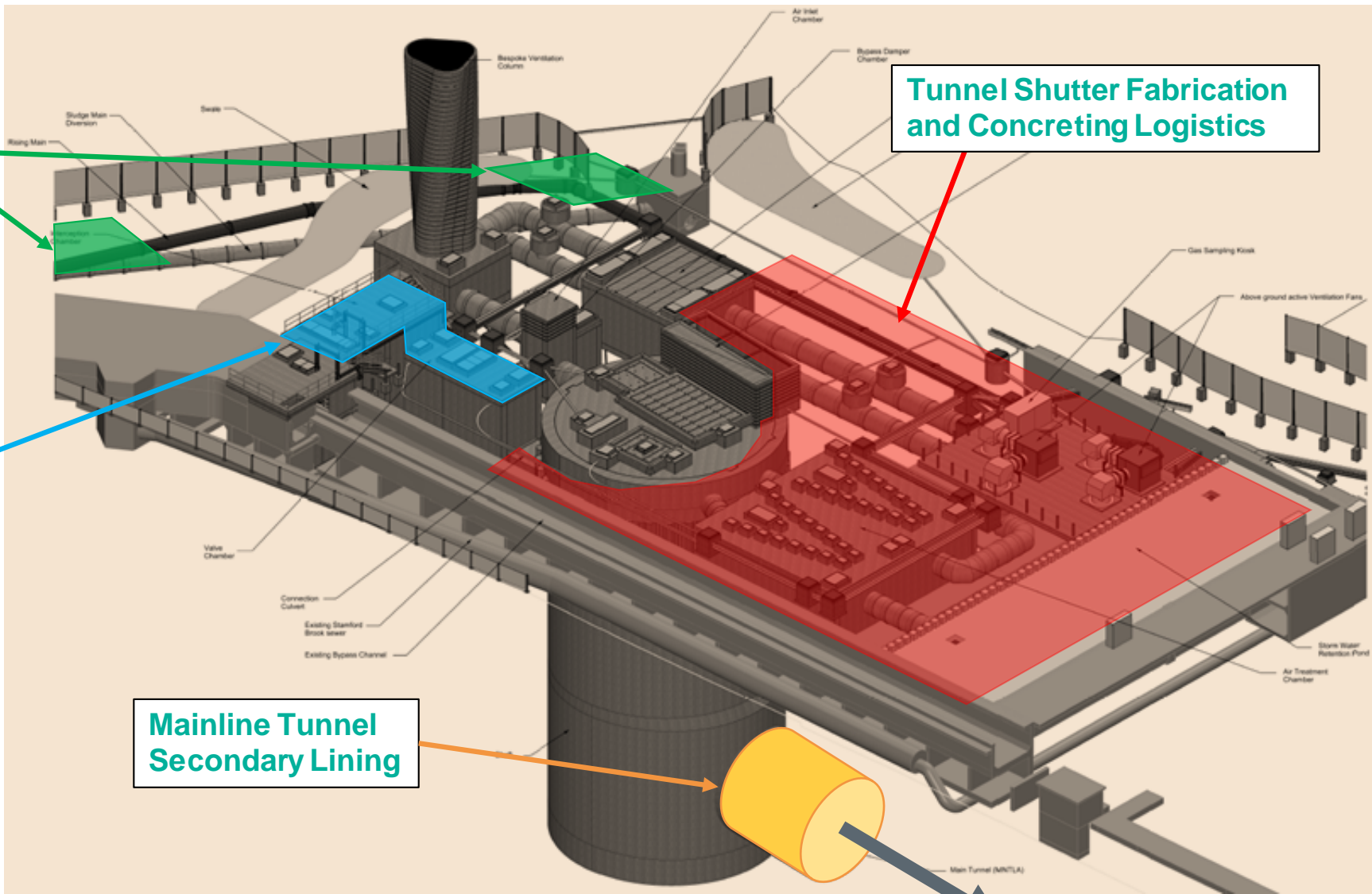
Pipe-Jacking excavations

MEICA Installations

Tunnel Shutter Fabrication and Concreting Logistics

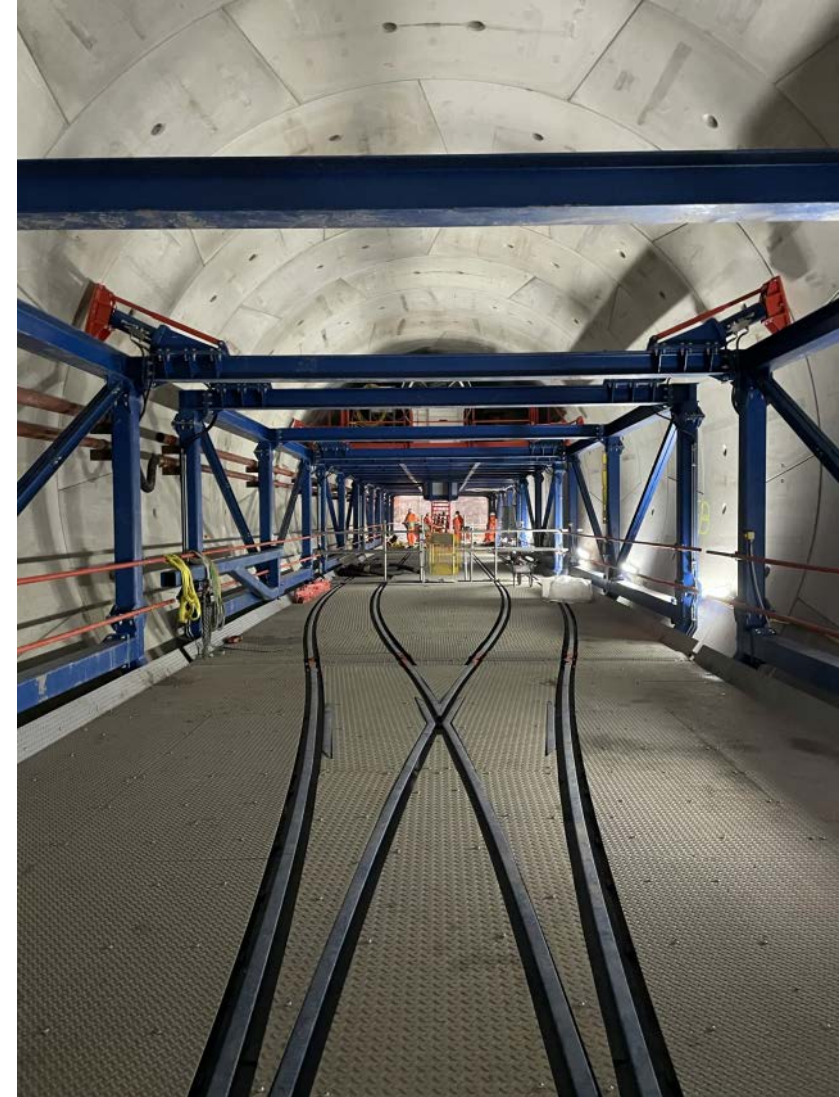
Mainline Tunnel Secondary Lining

To Carnwath Road



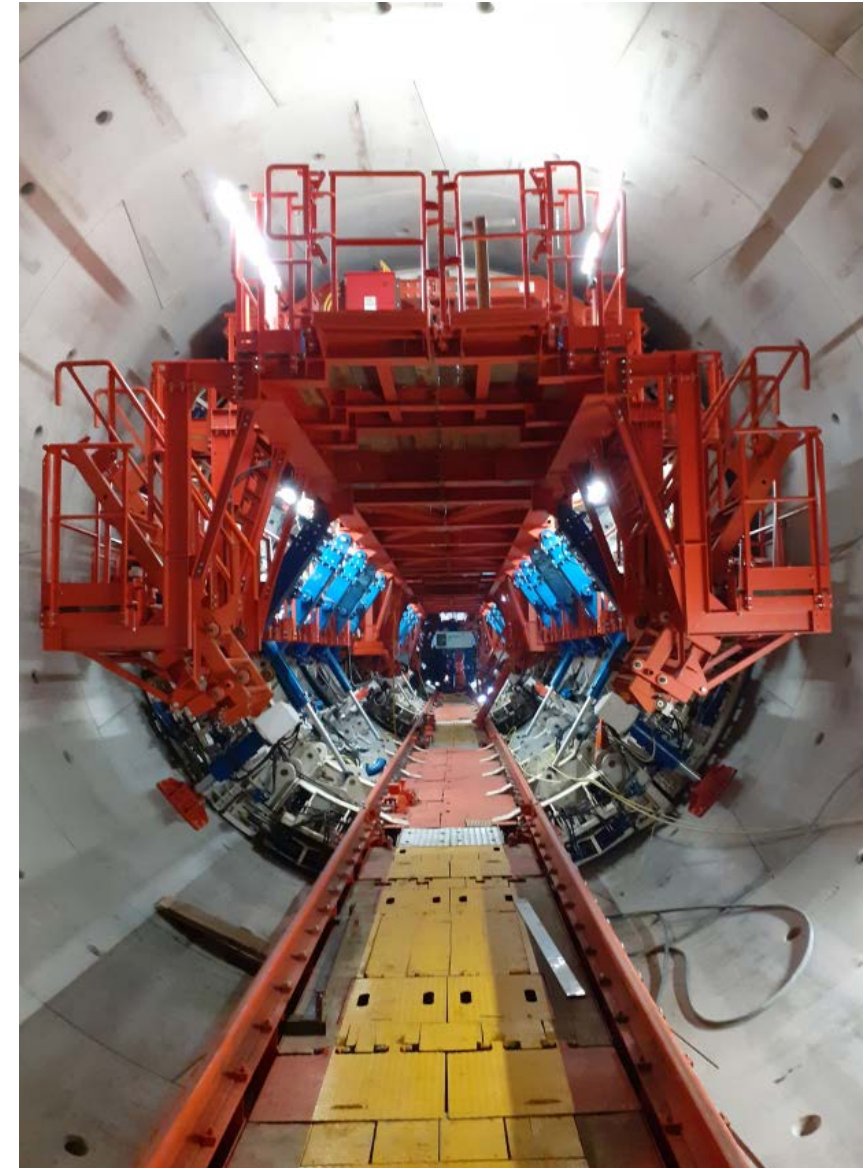


# February 2021 Logistics Train Crossing System





## March 2021 Tunnel Secondary Lining Shutters



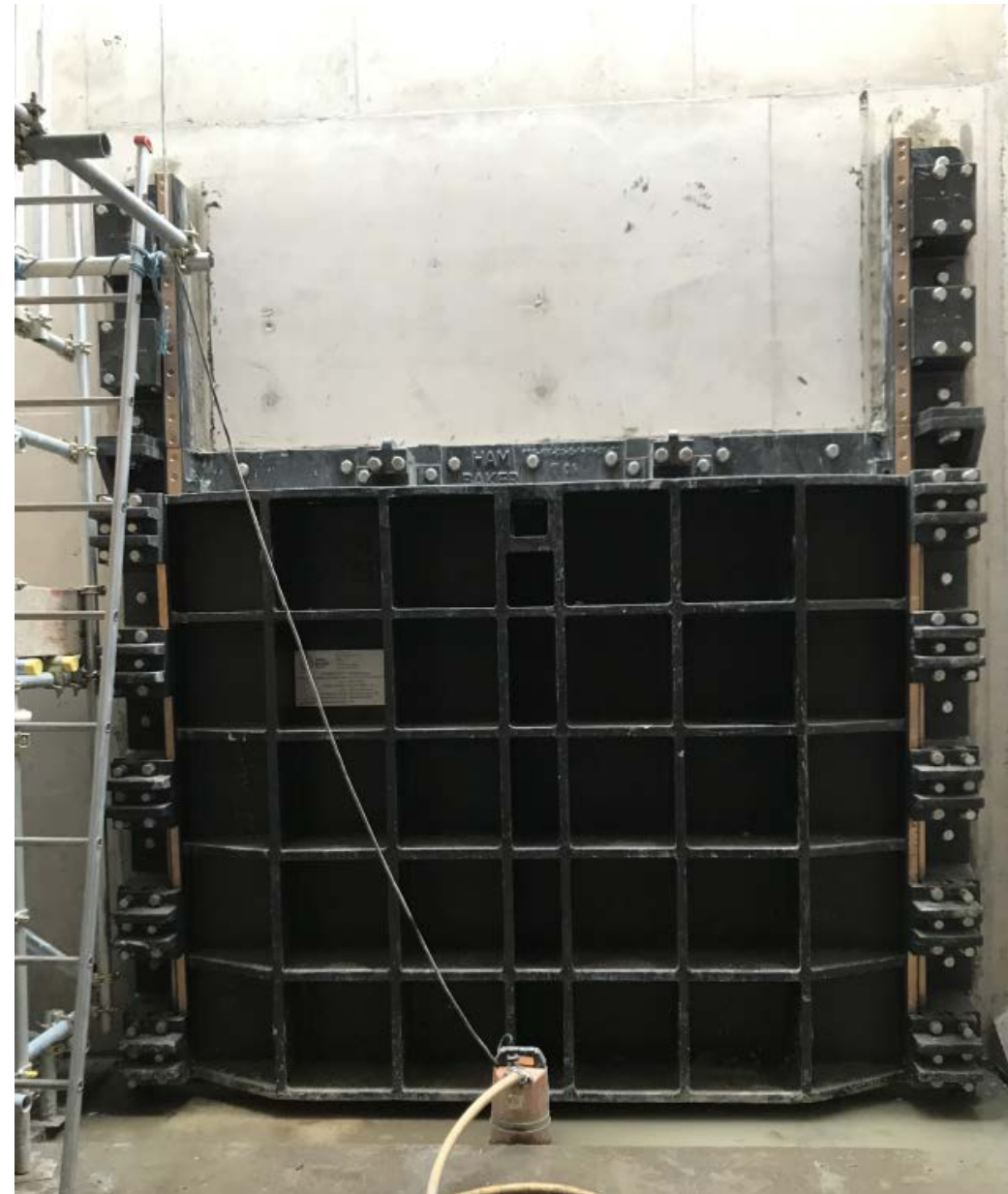


April 2021  
Tunnel Secondary Lining Concrete





May 2021  
Hydraulic Chamber Mechanical Gates





## June 2021 Pipe-Jacking Excavations





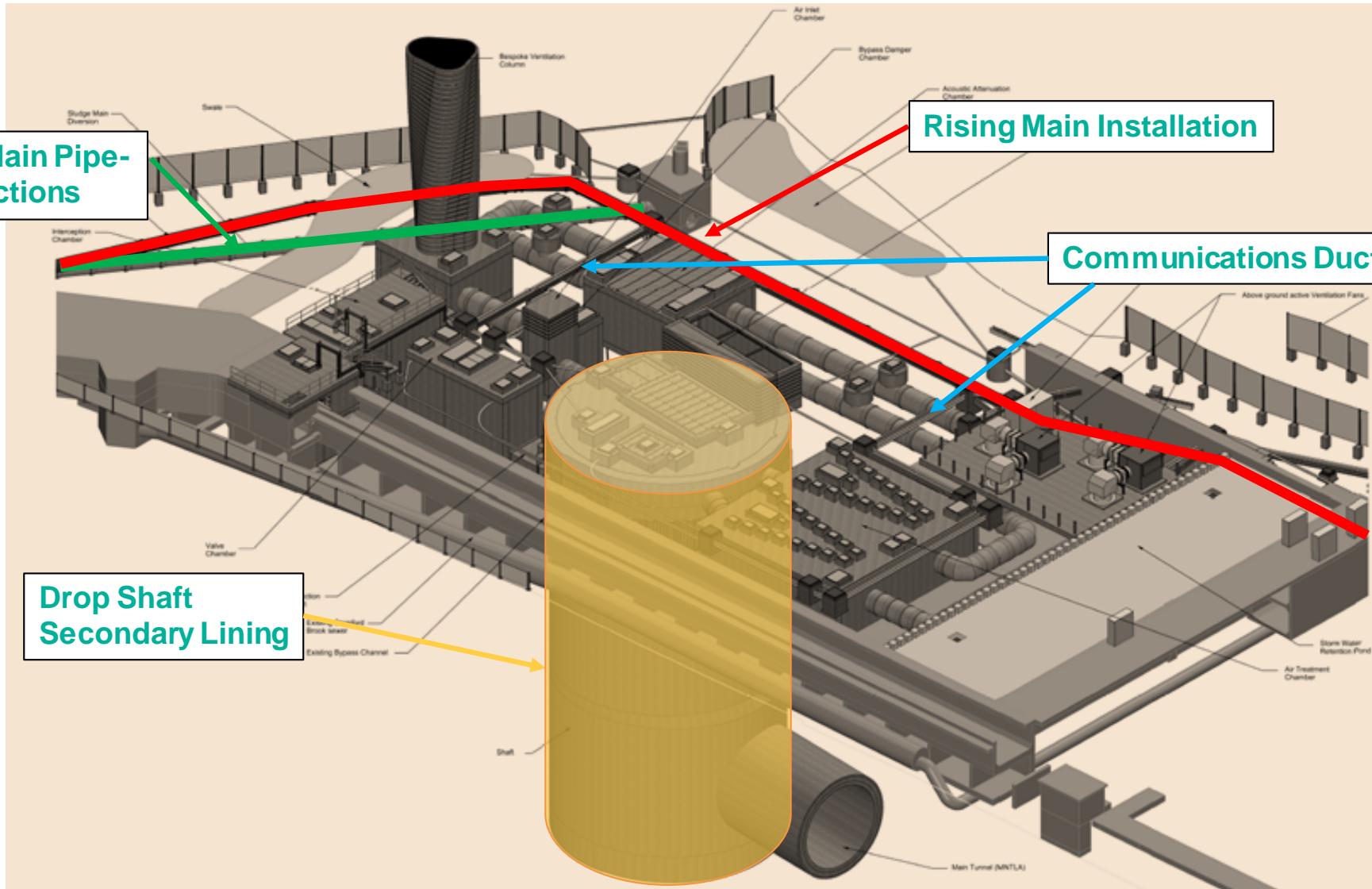
## Next 4 Months

Complete Syphon Main Pipe-Jacking and Connections

Rising Main Installation

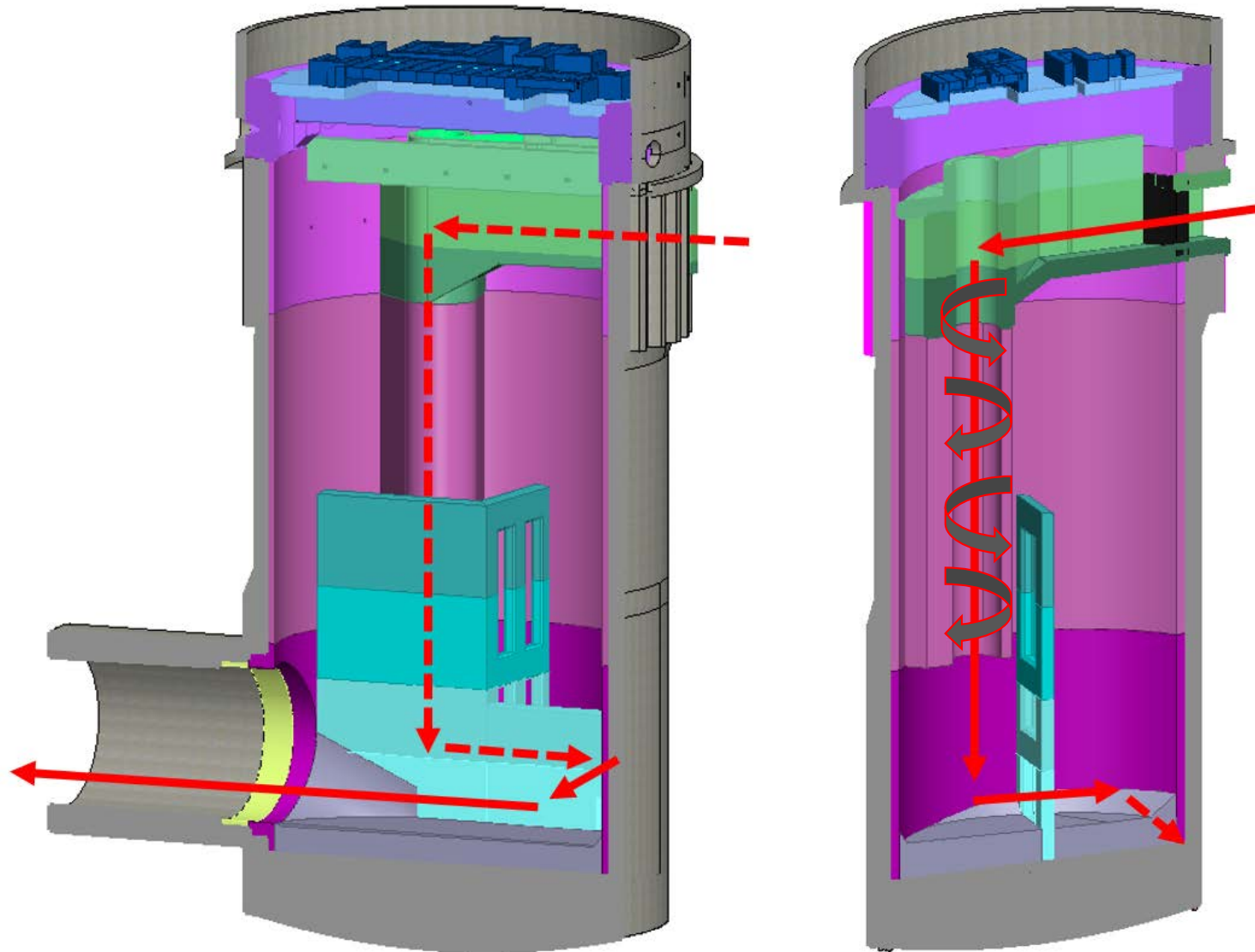
Communications Ducting

Drop Shaft  
Secondary Lining





## Drop Shaft - Remaining Structures





## Landscaping

- Internal storm tanks landscaping design approved by the London Borough of Ealing in July 2019
- Advance tree planting at Warple Way perimeter
- Soft landscaping to be implemented along northern Canham Road boundary including native wildflower meadow planting and native tree species including oak, cherry, hornbeam and birch.







# **COMMUNITY ENGAGEMENT**

**Katie Ashton, Communications Manager**



## Community Engagement

6 x information sheets have been issued since the last meeting:

- 4 x abnormal load departures and parking suspension
- 1 x Christmas shutdown
- 1 x 2021 working arrangements and installation of temporary yellow lines

21 complaints have been received:

- 21 x noise
- 1 x lighting
- 1 x vibration
- 1 x odour

General enquiries have also been received including topics such as: the CLWG, parking suspension, tunnel route, settlement, TV signal and the project in general

All enquiries have been responded to within 24 hours (where possible) and if needed, in collaboration with Thames Water



**Tideway**

**Call:** 08000 30 80 80

**Email:** [helpdesk@tideway.london](mailto:helpdesk@tideway.london)

**Write to:** Freepost TIDEWAY



**0800 316 9800**

Available 24/7 to answer all enquiries & complaints related to the operations and maintenance of the site



## How To Make A Claim if Affected By Tideway's Work

### Who do I go to for advice?

Independent Advisory Service (IAS) Helpline for independent advice:

- 0800 917 8845 or [info@tidewayias.co.uk](mailto:info@tidewayias.co.uk)
- Tideway's Compensation Lead, Louise Walsh, for personal assistance and advice
  - Helpdesk: 08000 30 80 80 / [helpdesk@tideway.london](mailto:helpdesk@tideway.london) or
  - Direct: 07971 077165 / [louise.walsh@tideway.london](mailto:louise.walsh@tideway.london)

### How do I submit my claim?

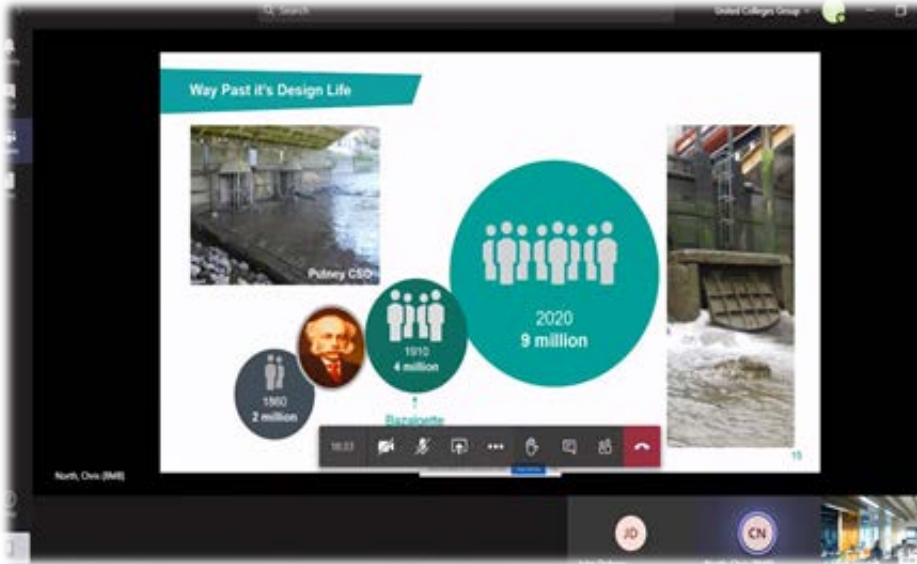
Louise can submit your claim to the Independent Compensation Panel (ICP) on your behalf, or you can submit your claim direct to the ICP: [admin@tidewayicp.london](mailto:admin@tidewayicp.london)

The IAS can send you a claim form, or you can download the form off the Tideway website: [www.tideway.london/help-advice/compensation-information/Independent-Compensation-Panel](http://www.tideway.london/help-advice/compensation-information/Independent-Compensation-Panel)



# Community Investment

- Our community investment activities are continuing when we are able to undertake them safely
- Please contact us if you are aware of an opportunity or community group that we could help



## How To Stay Up To Date

### INFORMATION SHEET

Ref : 2140-TDWAY-TTUN-990-ZZ-Report-700004  
March 2020



#### Information Sheets



### ACTON STORM TANKS

Community Liaison Working Group  
Tuesday 4 February 2020



#### Community Liaison Working Group Meeting's



#### Quarterly Newsletter



#### Monthly 'Virtual Drop-In' Every First Tuesday

Follow us on social media:

[@TidewayLondon](https://twitter.com/TidewayLondon)



[en-gb.facebook.com/TidewayLondon/](https://en-gb.facebook.com/TidewayLondon/)



[www.instagram.com/tidewaylondon/](https://www.instagram.com/tidewaylondon/)



[www.linkedin.com/company/tideway-london/](https://www.linkedin.com/company/tideway-london/)



[twitter.com/TidewayLondon](https://twitter.com/TidewayLondon)

If you would like to be added to our mailing list for works updates/notifications, email [helpdesk@Tideway.London](mailto:helpdesk@Tideway.London)





**Tideway**

# **RECONNECTING LONDON WITH THE RIVER THAMES**

**#SuperSewer**

[www.tideway.london](http://www.tideway.london)