

KEMPF CLWG

5th July 2021



Tideway



Content

- **Noise and air quality**
- **Construction progress**
- **Programme of future work**
- **Legacy**
- **KEMPF Planning Application**



**LATEST
PROGRESS**

CONSTRUCTION UPDATE



Tideway



Progress

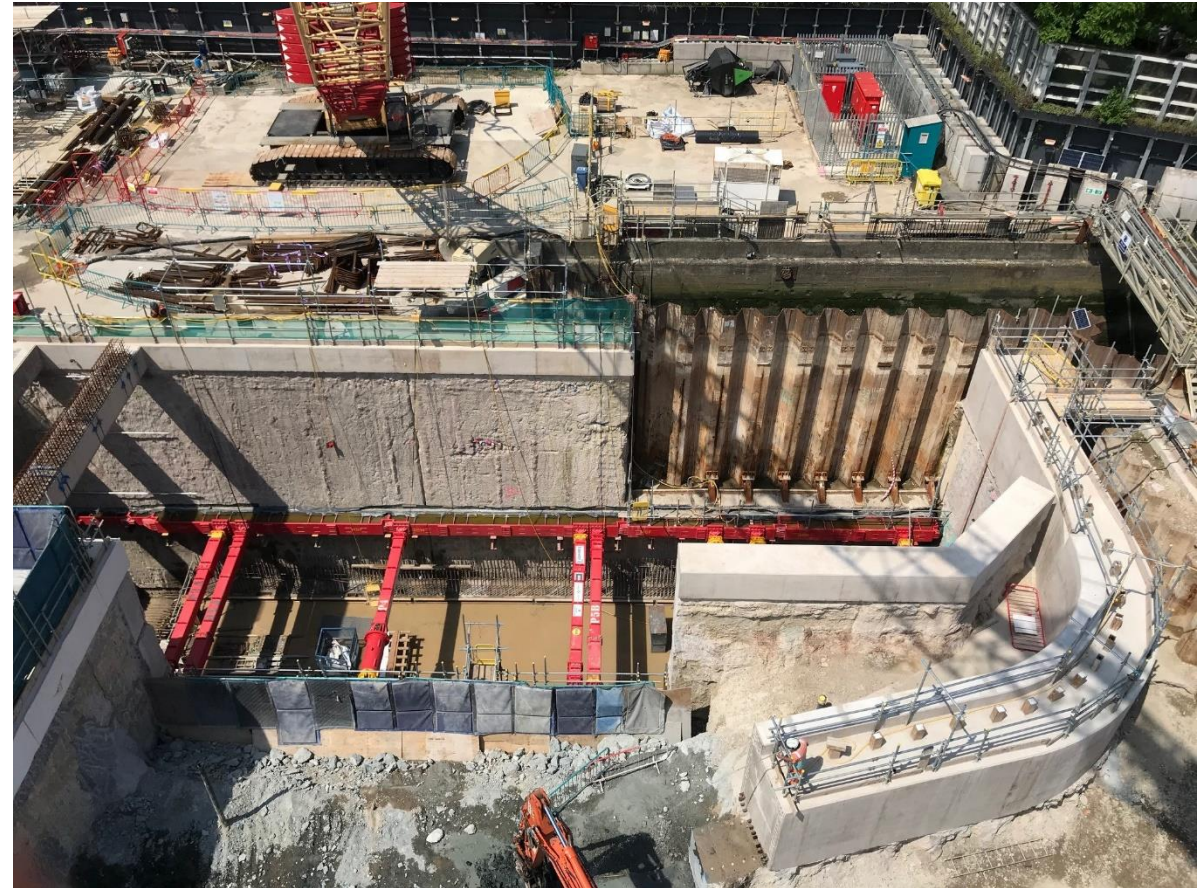
- Dwalling is complete
- Capping Beams complete for Shaft, River Wall and CSO
- Installation of Temporary Props in the CSO
- Repairs for the NESR
- Excavation of the Shaft and Main CSO Chamber (Value and Interception Complete).
- Shaft Base Slab Complete CSO Base Slab part complete.

Progress – Combined Sewer Overflow (CSO)



Sheet pile reinforcements, River Wall and CSO Capping Beams, Opening in the Diaphragm Wall for the NESR Discharges

CSO base slab pour, installation of temporary props and excavation of the different hydraulic chambers

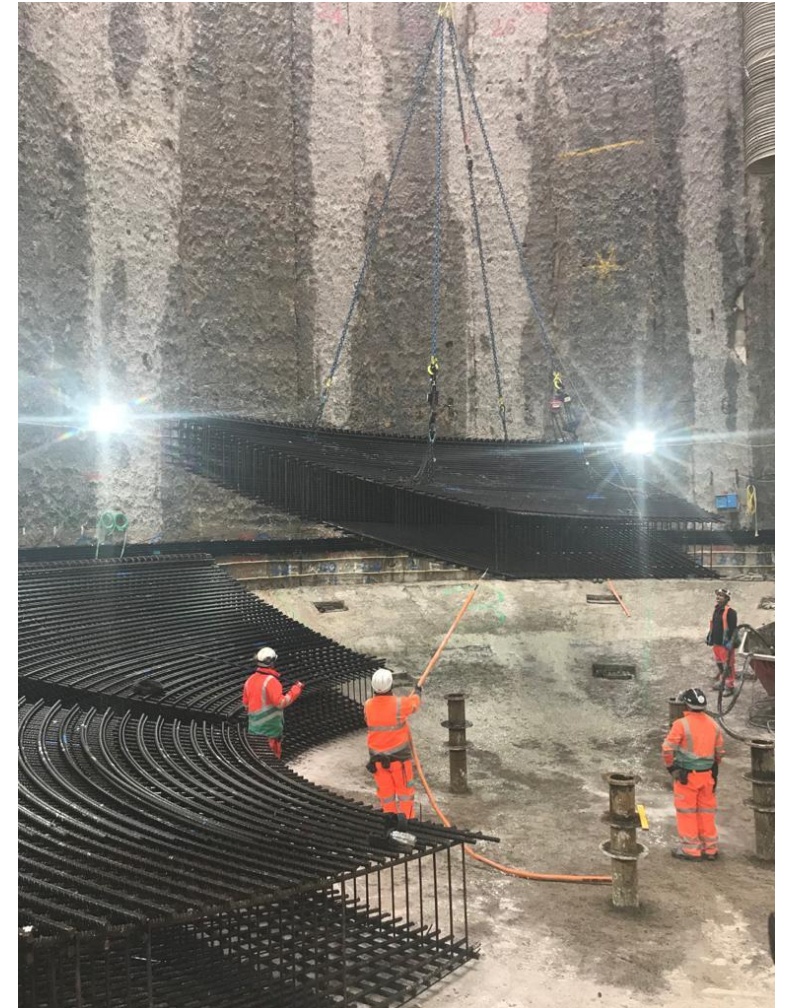


Progress - Shaft



Concrete pour for base slab successfully completed 2 weeks ahead of programme

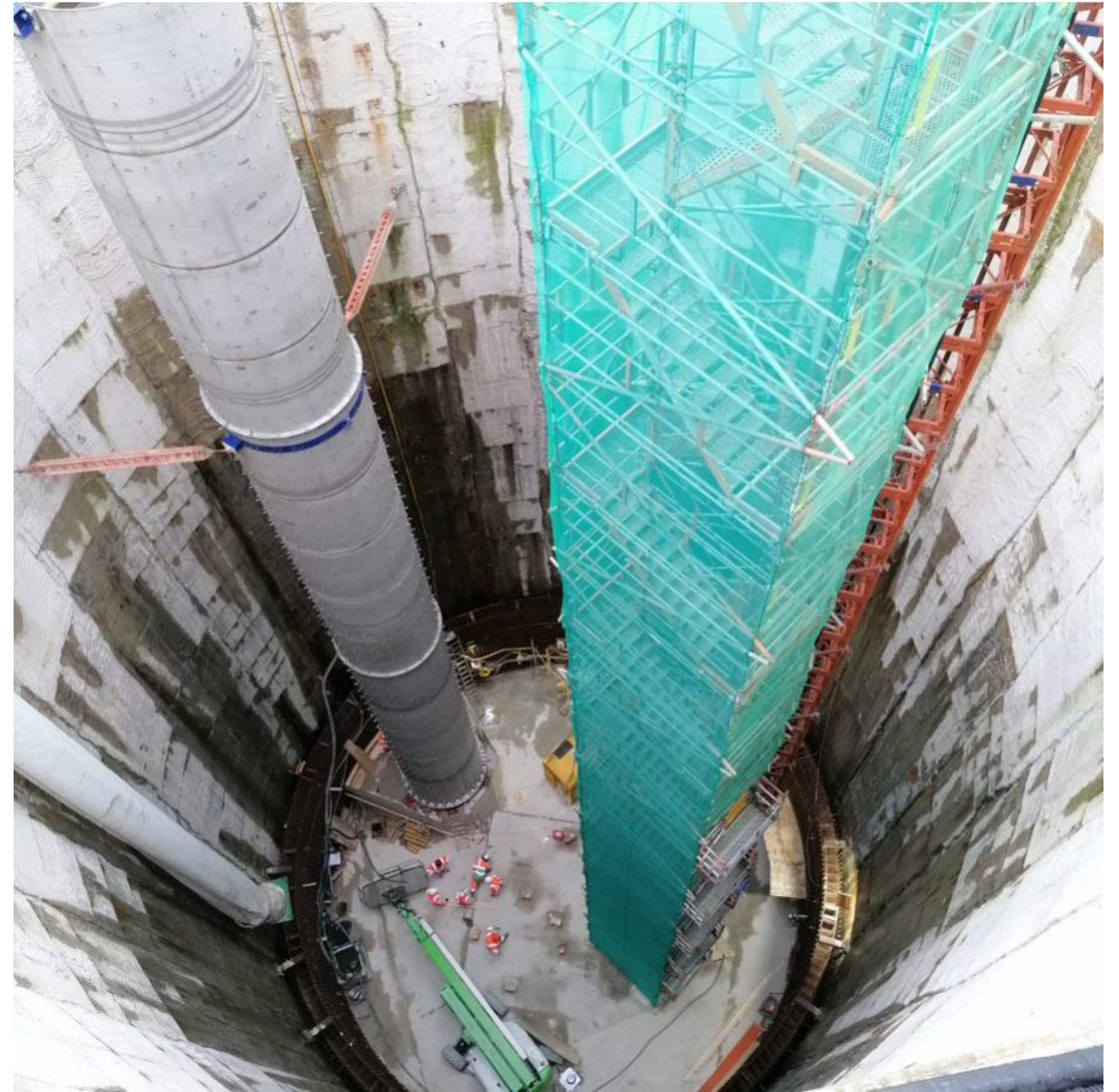
After the shaft excavation was completed, the base slab reinforcement was delivered by barge and installed in place



Progress – Future Works

Slipform Rig Works – Shaft Secondary Lining

River Wall, Over Flow and air treatment unit works



King Edward Memorial Park Foreshore Programme Overview

Programme Overview 2017-2024	2017				2018				2019				2020				2021				2022				2023				2024				
	Q1	Q2	Q3	Q4	Q1	Q2	Q3	Q4	Q1	Q2	Q3	Q4	Q1	Q2	Q3	Q4	Q1	Q2	Q3	Q4	Q1	Q2	Q3	Q4	Q1	Q2	Q3	Q4	Q1	Q2	Q3	Q4	
Install Cofferdam			Completed																														
Relieving Platform					Completed																												
Additional Sheet Piles and Cofferdam Works								Completed																									
Prepare Cofferdam Platform and DSM								Completed																									
Diaphragm Walls												Completed				Extended hours for long pours / Removal of excavated spoil.																	
Excavate Shaft					Extended hours for long pours / Removal of excavated spoil.								Complete																				
Build Shaft																																	
Hydraulic Structures					Extended hours for long pours / Removal of excavated spoil.																												
Connect into Sewer																																	
Build Adit																																	
Remove Cofferdam																																	
Moving Parts and Tests																																	
Landscaping																																	

Standard Working Hours
8.00 to 18.00, Monday to Friday

Extended Working Hours
First Shift 8.00 to 18.00 Monday to Friday
Second Shift: 18.00 to 22.00 Monday to Friday

This work or movement of marine plant will occur only when necessary due to tidal restrictions of long concrete pours.

Mobilisation and Demobilisation Hours
Up to one hour before and after our standard hours and 30 minutes after extended hours working.
07:00 to 08:00 and 18:00 to 19:00 Monday to Friday or
22:00-22:30 Monday to Friday

Maintenance Periods
On occasions due to health and safety requirements we will also carry out maintenance between
08:00 to 17:00 Saturdays and 10:00 to 16:00 Sundays

Environment: Noise and Air Quality

Section 61 Phase 4 Overview (July 20 – Aug 21)

Standard working hours:

08:00-18:00 (Monday to Friday)

08:00-13:00 (Saturday)

- Reduced use of breakers on Saturdays 08:00-13:00

Extended hours:

- 05:00 to 08:00 and 18:00 to 22:00 (Monday to Friday)
- Large concrete pours.
- Tidally influenced works.

Continuous hours: (24/7):

- NESR, cofferdam, & river wall works, essential for stability of the structure.
- Shaft base slab and portal concrete pour - **complete**
- Drainage and dewatering

Mobilisation and demobilisation hours:

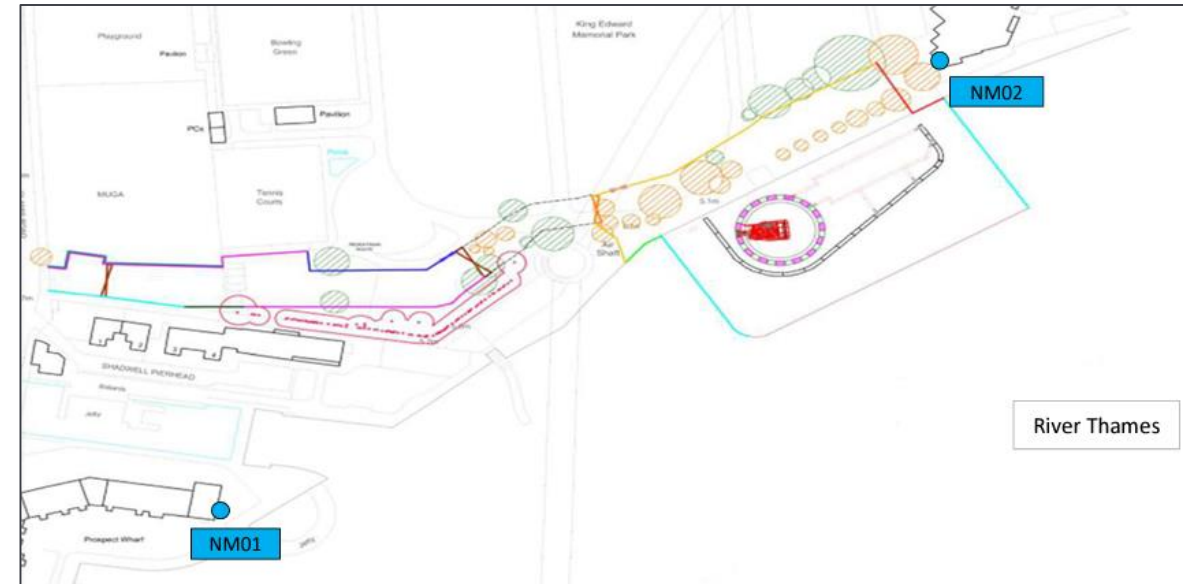
07:00 to 08:00 and 18:00 to 19:00 (Monday to Saturday)

22:00 to 22:30 (Extended hours activities)

Exceedances

- **Noise** (Jan to June 21): 0
- **Air** (Jan to June 21): 0

Monitoring Locations



Environment: Noise and Air Quality

Upcoming Section 61 Phase 5 Overview (Aug 21 – Mar 22)

Standard working hours:

08:00-18:00 (Monday to Saturday)

- Reduced use of breakers on Saturdays 08:00-13:00

Extended hours:

- 05:00 to 08:00 and 18:00 to 22:00 (Monday to Friday)
- CSO base slab and other large concrete pours.
- Barge loading/unloading and aggregate deliveries.

Continuous hours (24/5):

- Shaft and shaft adit secondary lining.

Continuous hours (24/7):

- NESR, cofferdam, & river wall repair/maintenance works.
- Drainage and dewatering.

Mobilisation and demobilisation hours:

- 07:00 to 08:00 and 18:00 to 19:00 Monday to Saturday
- 04:30 to 05:00 and 22:00 to 22:30 (Monday to Friday for extended working hours' activities)



LEGACY



Tideway



LEGACY

COMMUNITY INVESTMENT



Our commitment to the communities we are working in is to deliver our work with care and consideration and leave a lasting, positive legacy for London.

CVB Staff working on the Tideway project volunteer their time to support good causes across London, using their professional skills where they can so that we can have an even greater benefit for our charity partners.



TIDEWAY EAST HIGHLIGHTS

Skills and Employment Forum



Apprentice results:

Some exceptional results with a 93% and four above 70%.
Tunnelling apprentices progressing to final assessment.
Some great feedback on their commitment.

Women In Construction:

Virtual mentoring - A range of staff volunteers were involved to support during lockdown and beyond.

Governor role :

Two East staff have roles as Chair of Governors supporting local borough schools. Commitment to dealing with COVID shut-down, re-opening and exam arrangements, affects on staff and pupil mental welfare.

LDE UTC in top 1% (UK) for technical results.

Recruitment reopen:

Tunnelling contractor JGL, liaising directly with East London boroughs, had 30 applications for 2 entry level tunnelling vacancies.

LEGACY

COMMUNITY INVESTMENT



KICKSTART SCHEME



100% Government Funded
Work Placement for 16 – 24
year olds

Kickstart Scheme

To support young people impacted by COVID 19 pandemic, who are at risk of being left behind in the jobs market, offering 6 month placements.

See more below :

[Want a Kickstart? - Job help \(campaign.gov.uk\)](https://campaign.gov.uk)

Local Opportunities and Outreach Group



Meeting with external partners, to ensure a suitable workforce to deliver the works, promote opportunities for local people, disadvantaged groups and local businesses and support initiatives to promote STEM education and careers.

**Southwark – Greenwich – Tower Hamlets –
Lewisham - Newham**

Status of the Application



Status of the Application

The formal application was submitted on 21 May 2021 to Tower Hamlets.

Tower Hamlets Council started their formal consultation on the King Edward Memorial Park Foreshore Structure proposals 08 June 2021.

This follows a draft consultation period on the draft application from 17 November 2020 and the community consultation presentation held in December 2020 in addition to numerous stakeholder and CLWG meetings detailed in the formal submission.

The Tower Hamlets Council reference for the submission is PA/21/01190/NC. You can view the proposals in full by entering this into the Tower Hamlets Council online Planning Register.

If you would like to comment on the scheme please email representations to development.control@towerhamlets.gov.uk quoting the application reference above, by 08 July 2021.



Tideway

RECONNECTING LONDON WITH THE RIVER THAMES

#SuperSewer

www.tideway.london