

DEPTFORD CHURCH STREET & GREENWICH PUMPING STATION

ONLINE COMMUNITY LIAISON WORKING GROUP



Tideway



13 July 2021

STAFF



Chair: Mehboob Khan

Tideway

- Darren Kehoe, Project Manager Greenwich
- Anil Dhillon, Project Manager Deptford
- Natasha Rudat
- Emily Black

CVB – main works contractor

- Audric Rivaud, Deptford Church Street Site Manager
- Anna Fish– Deptford Church Street, Environmental Advisor
- Robert Margariti-Smith, Greenwich, Tunnel & Site Manager
- Rebecca Oyibo
- Joe Selwood

AGENDA



Deptford Update

- Works update
- Looking ahead
- Noise and vibration

Greenwich Update

- Works update
- Looking ahead
- Noise and vibration

Community Investment

Community Feedback / Questions

DEPTFORD CHURCH STREET



Tideway



WHAT WE'RE BUILDING



DEPTFORD WORKS UPDATE

SHAFT & CULVERT

Shaft

- Vortex pipe installed and secondary lining complete
- Tunnel Boring Machine crossing complete
- Vortex generator works on-going



Culvert

- Excavation complete
- Base slab and walls complete
- Opening to shaft complete



DEPTFORD WORKS UPDATE

COMBINED SEWER OVERFLOW (CSO)



CSO Phase 1: Interception Chamber

- Internal walls and roof complete
- Mechanical, Electrical, Instrumentation, Controls, Automation (MEICA) equipment installation on-going



CSO Phase 2: Sewer connection

- Protection works of Deptford Green Foul Sewer complete
- Secant piling works complete
- Capping beam and excavation to Deptford Storm Relief Sewer on-going



DEPTFORD 12 MONTHS LOOK AHEAD

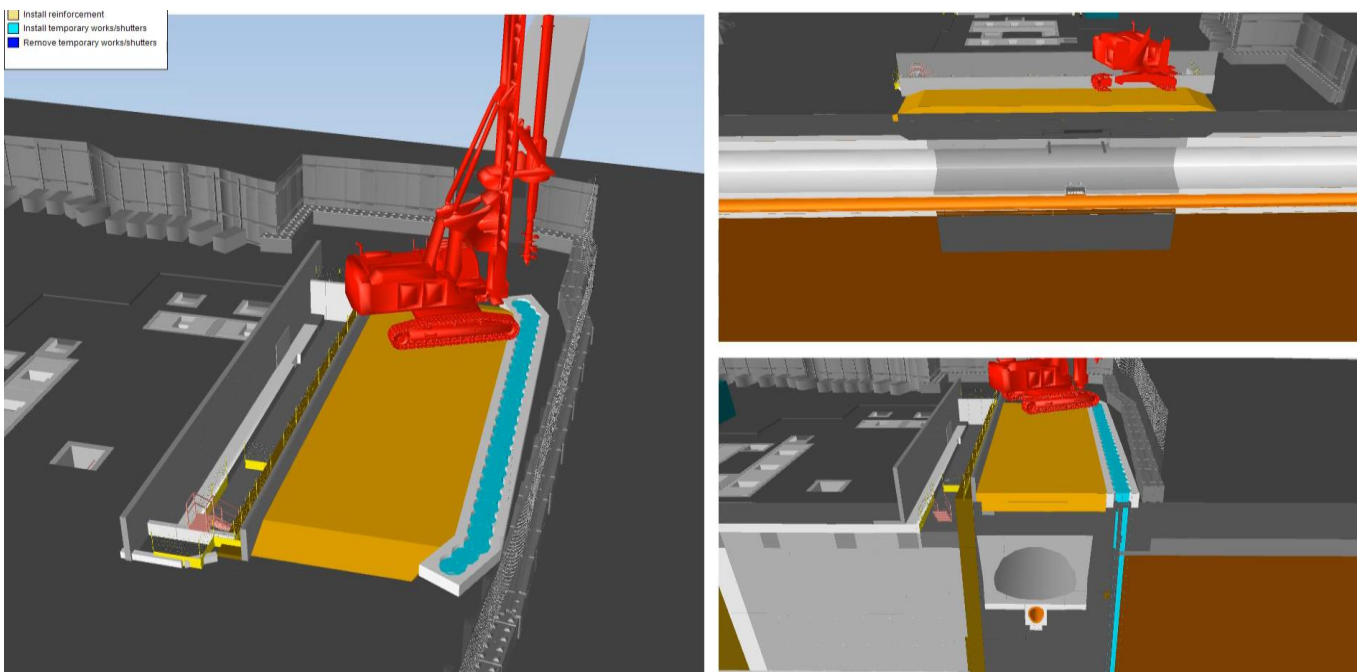


	2021												2022						
	1	2	3	4	5	6	7	8	9	10	11	12	1	2	3	4	5	6	7
Shaft civils																			
TBM crossing Deptford site																			
CSO civils																			
Other structures civils (ATU/VC)																			

WHAT TO EXPECT AT DEPTFORD

CSO: connection to existing sewer

- This work will take place over a 10 hour shift – the time of the shift will be dependent on the tidal restrictions in the Deptford Storm Relief Sewer'
- Lights to illuminate works and walkways after dark
- There may be an increase in noise but we will try to mitigate where possible



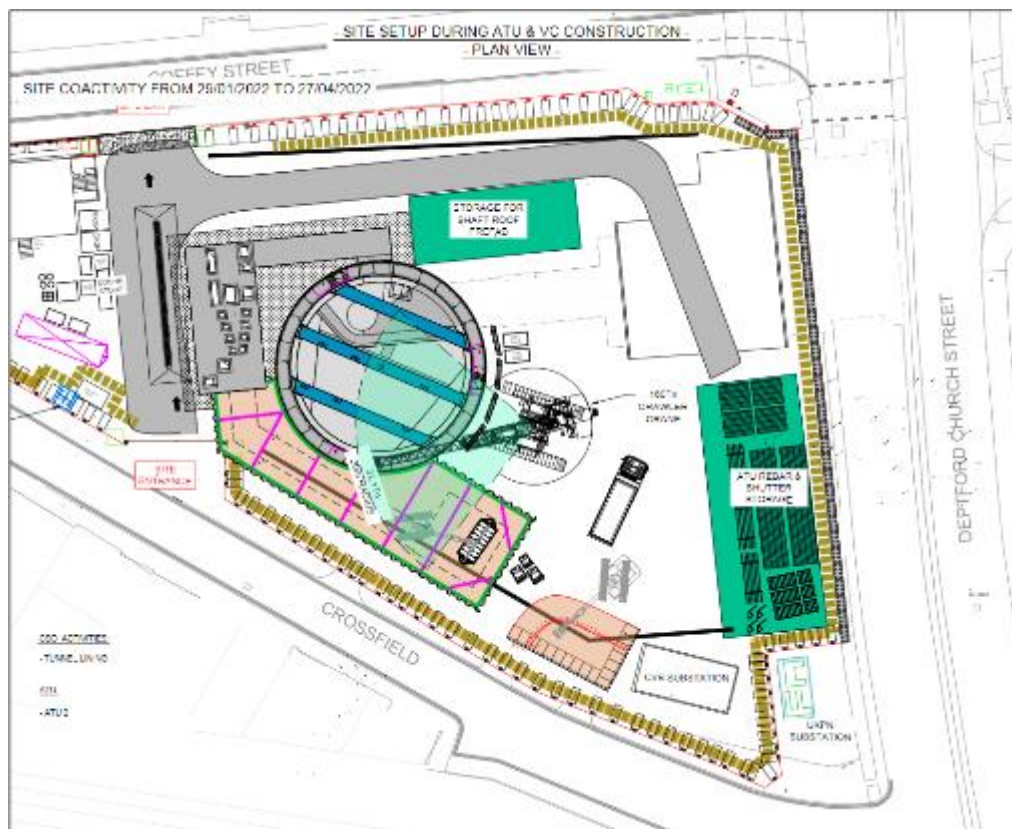
Mitigations

- Method of works chosen to limit noise generation such as sawing concrete into blocks easily transportable off site.
- Live noise monitoring to ensure limits are not exceeded
- Most of the works will take place below ground level. Acoustic blankets will be used on surface where practicable to reduce noise.
- Electrically powered equipment will be used where possible
- Lights will be orientated down, towards the site
- Deliveries will take place within normal working hours (8AM to 6PM)
- Personnel will be reminded to be respectful during nights.

WHAT TO EXPECT AT DEPTFORD

ATC: Air Treatment chamber

- Works will take place within standard working hours (8AM to 6PM)
- Some localised vibration while excavation work is carried out



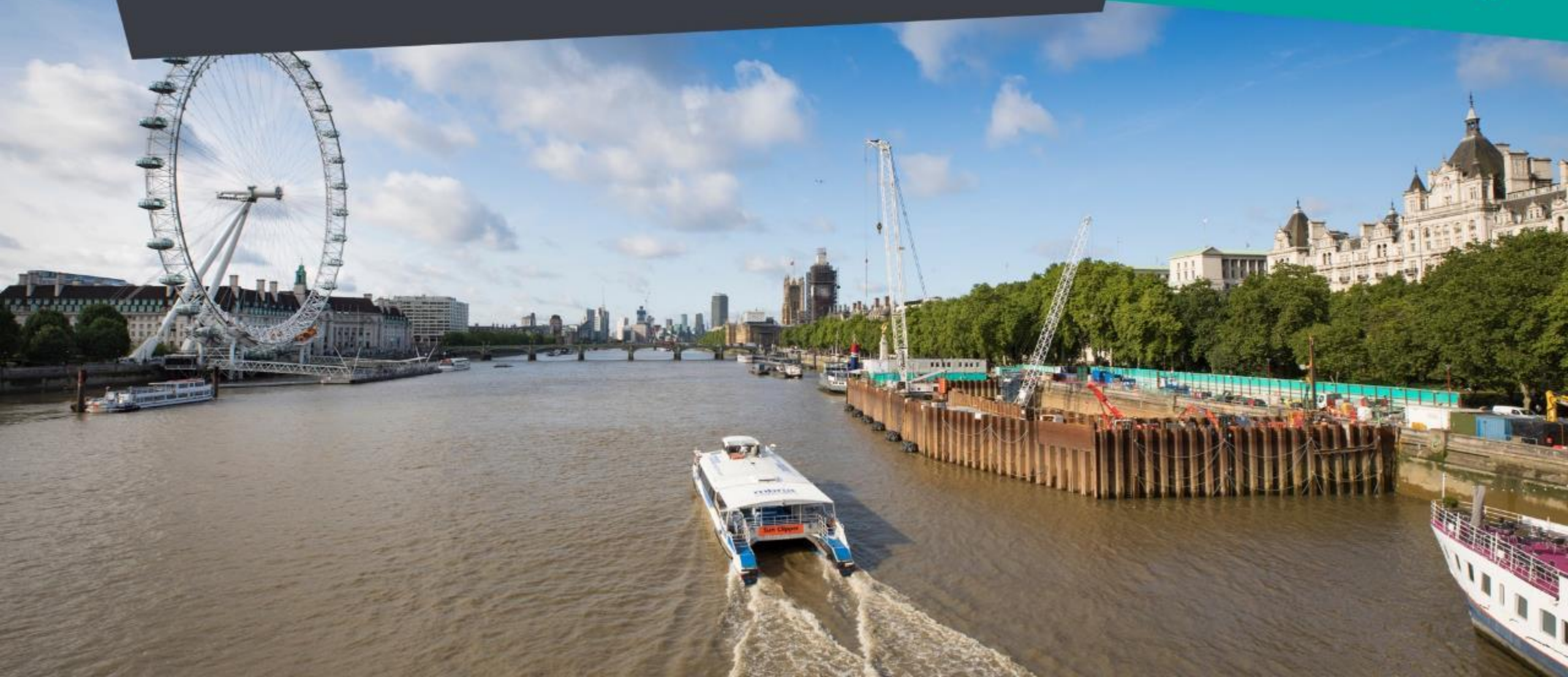
Mitigations

- Method of works chosen to limit noise and vibration generation
- Live noise monitoring to ensure limits are not exceeded
- Acoustic blankets will be used on surface where practicable to reduce noise.
- Electrically powered equipment will be used where possible

NOISE AND AIR QUALITY



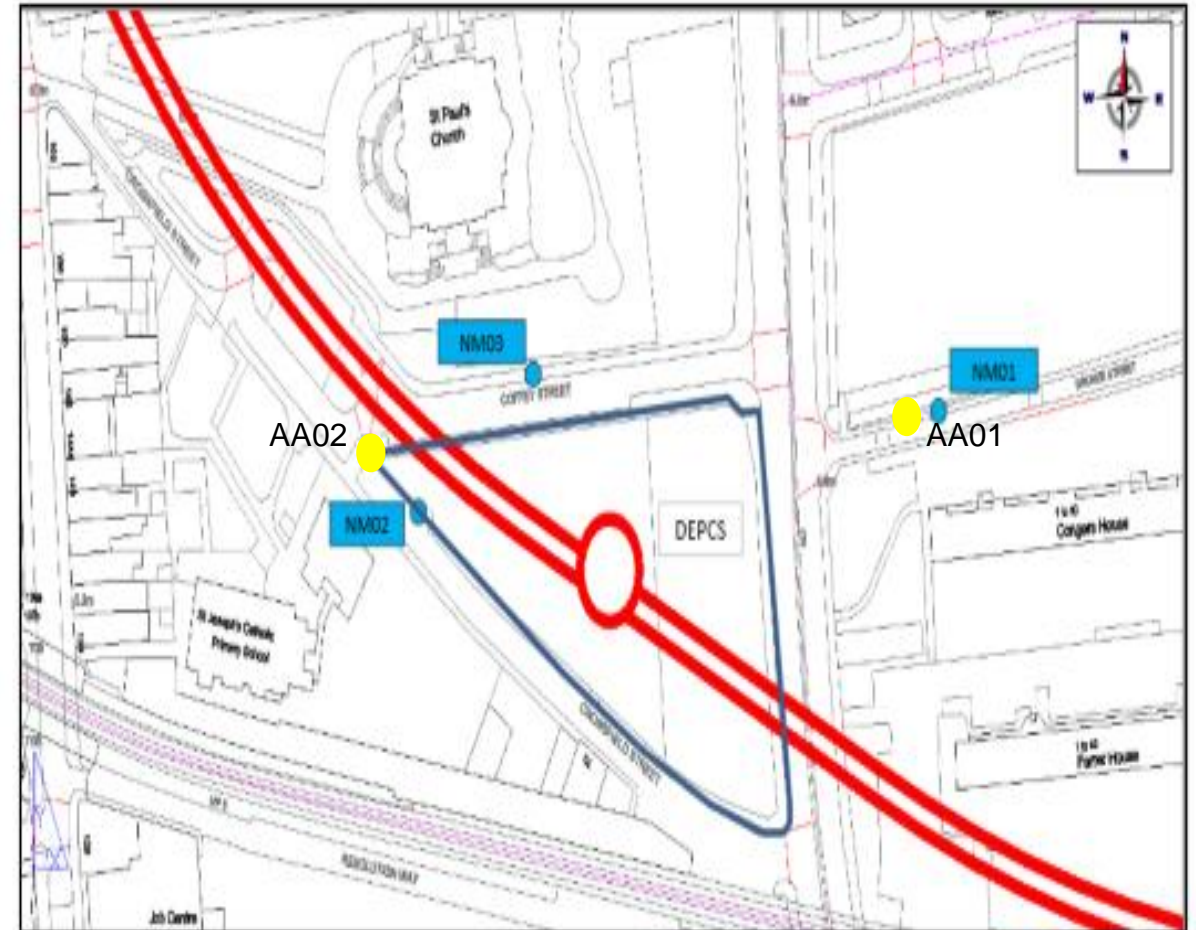
Tideway



DEPTFORD PUMPING STATION NOISE AND AIR QUALITY

	Noise	Air Quality
Month	S61 Exceedances	24h PM10 exceedance
Oct-20	0	0
Nov-20	0	0
Dec-20	0	0
Jan-21	0	0
Feb-21	0	0
Mar-21	0	0
Apr-21	0	0
May-21	0	0
Jun-21	0	0

- Implementing HVO biofuel
- Idling reduction campaign to reduce plant idling



**COMMUNITY
QUESTIONS AND
FEEDBACK?**

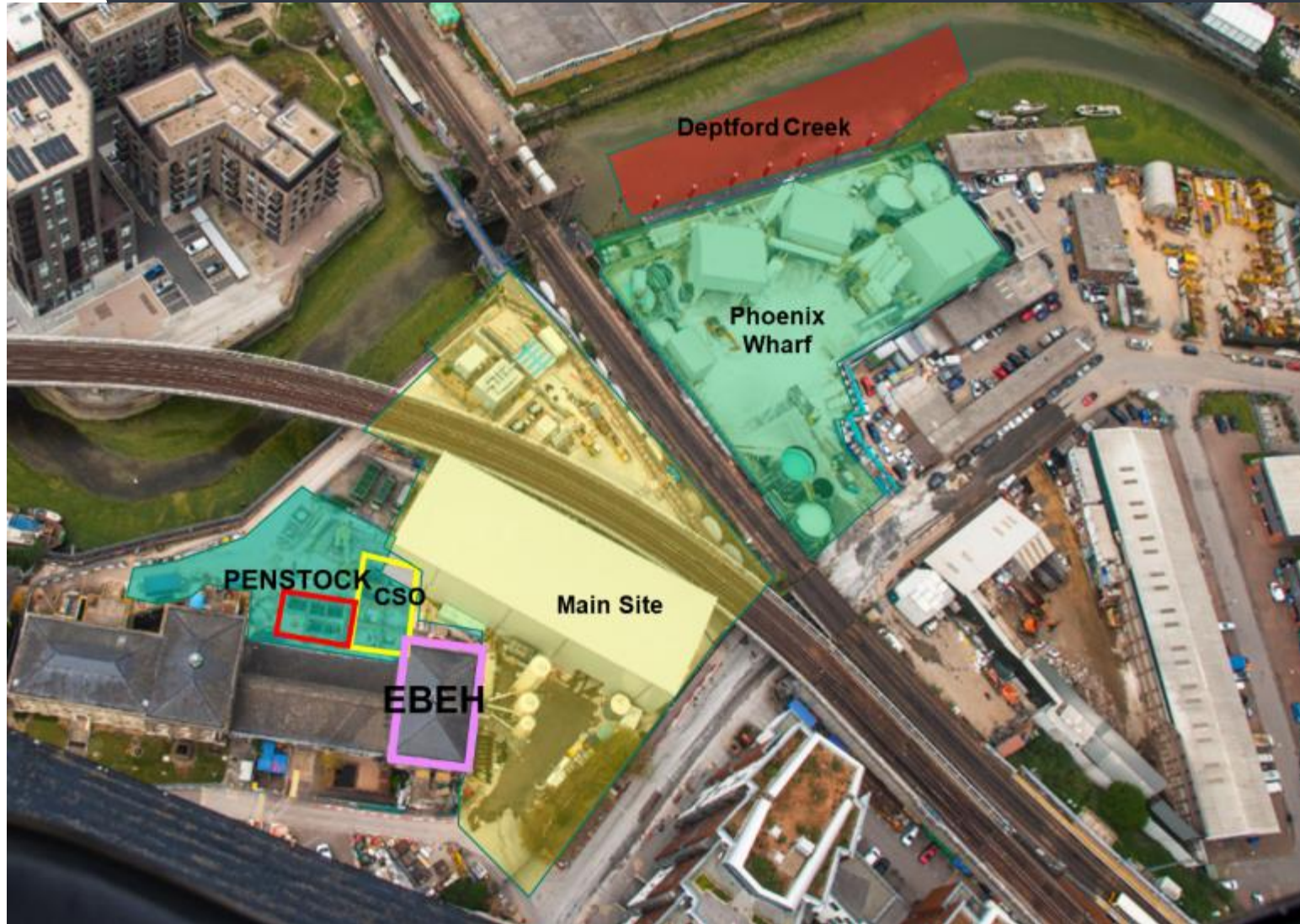
GREENWICH PUMPING STATION



Tideway



GREENWICH PUMPING STATION



GREENWICH WORKS UPDATE



Main Site & Shaft

- Tunnel Boring Machine has been Commissioned and Launched
- 9 TBM gantries have been installed behind the TBM shield (launch phase)
- Commenced muck away on Deptford Creek
- Tunnelled through Deptford Church St Shaft
- Currently at Ring 560 (870 meters)

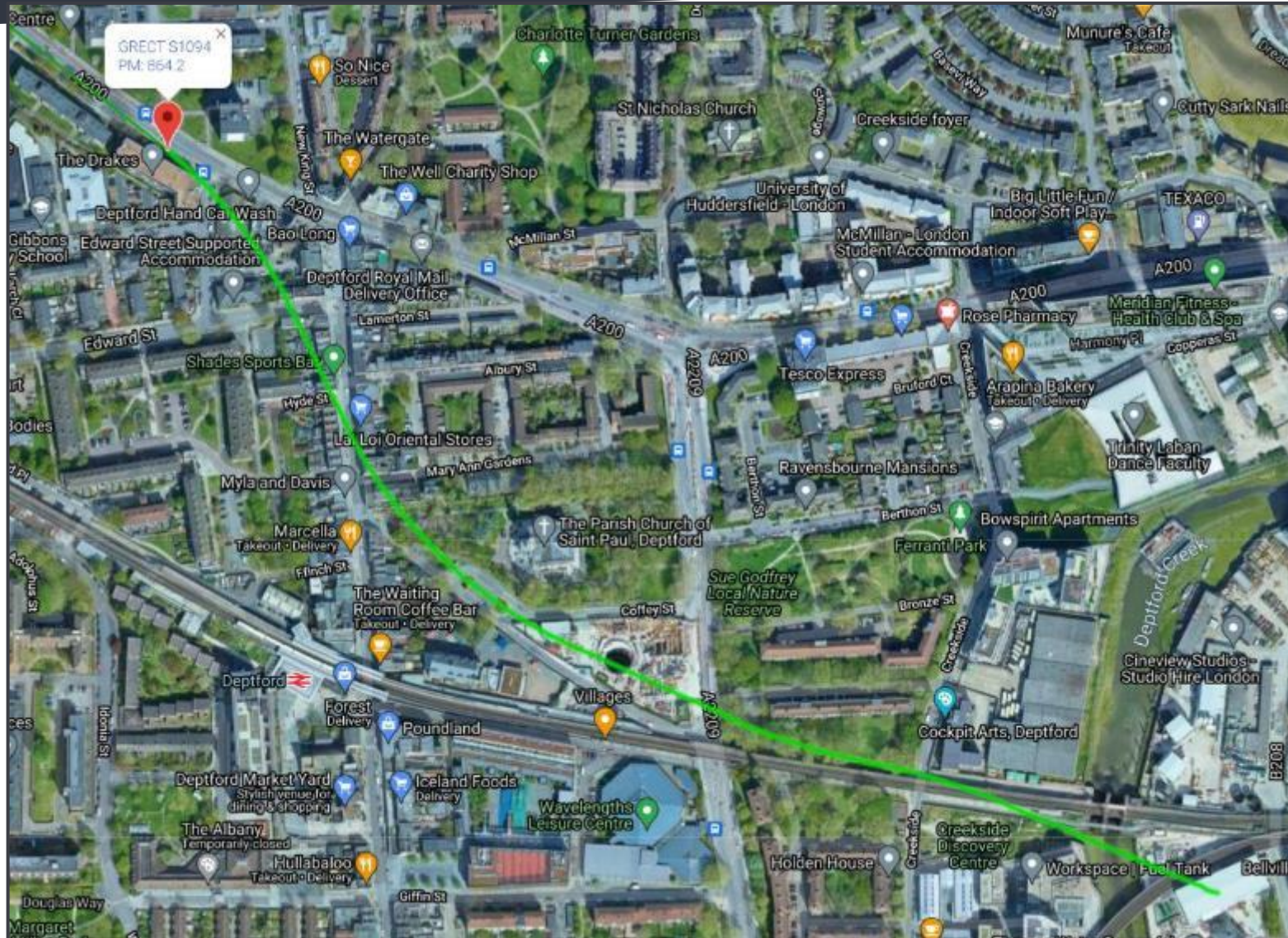
Combined Sewer Outfall (CSO)

- Temporary flume installed between penstock chambers
- Top level propping installed on CSO
- Excavation of CSO complete to mid-level props
- Mid-level propping commenced

East Beam Engine House

- Windows and Door removed to permit commencement of works
- Trial pits undertaken to ascertain extent of work required inside the building

TBM CURRENT PROGRESS



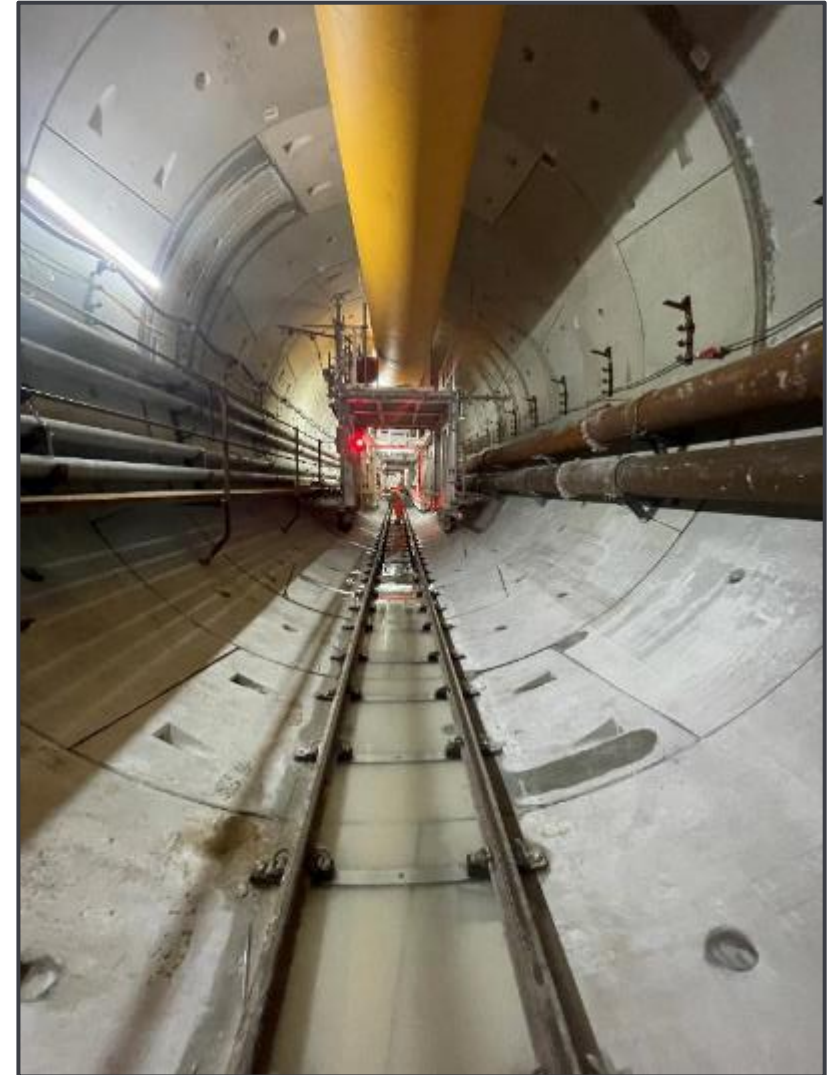
ACOUSTIC SHED



SHAFT



IN THE TUNNEL



ON THE TBM



PHOENIX WHARF



PENSTOCK CHAMBER



CSO WORKS



EAST BEAM ENGINE HOUSE



GREENWICH PUMPING STATION LOOK AHEAD



Tunnelling

- Continue tunnelling towards Earl Pumping Station shaft (at Ring 1416)
- Install slurry boost pump in the tunnel

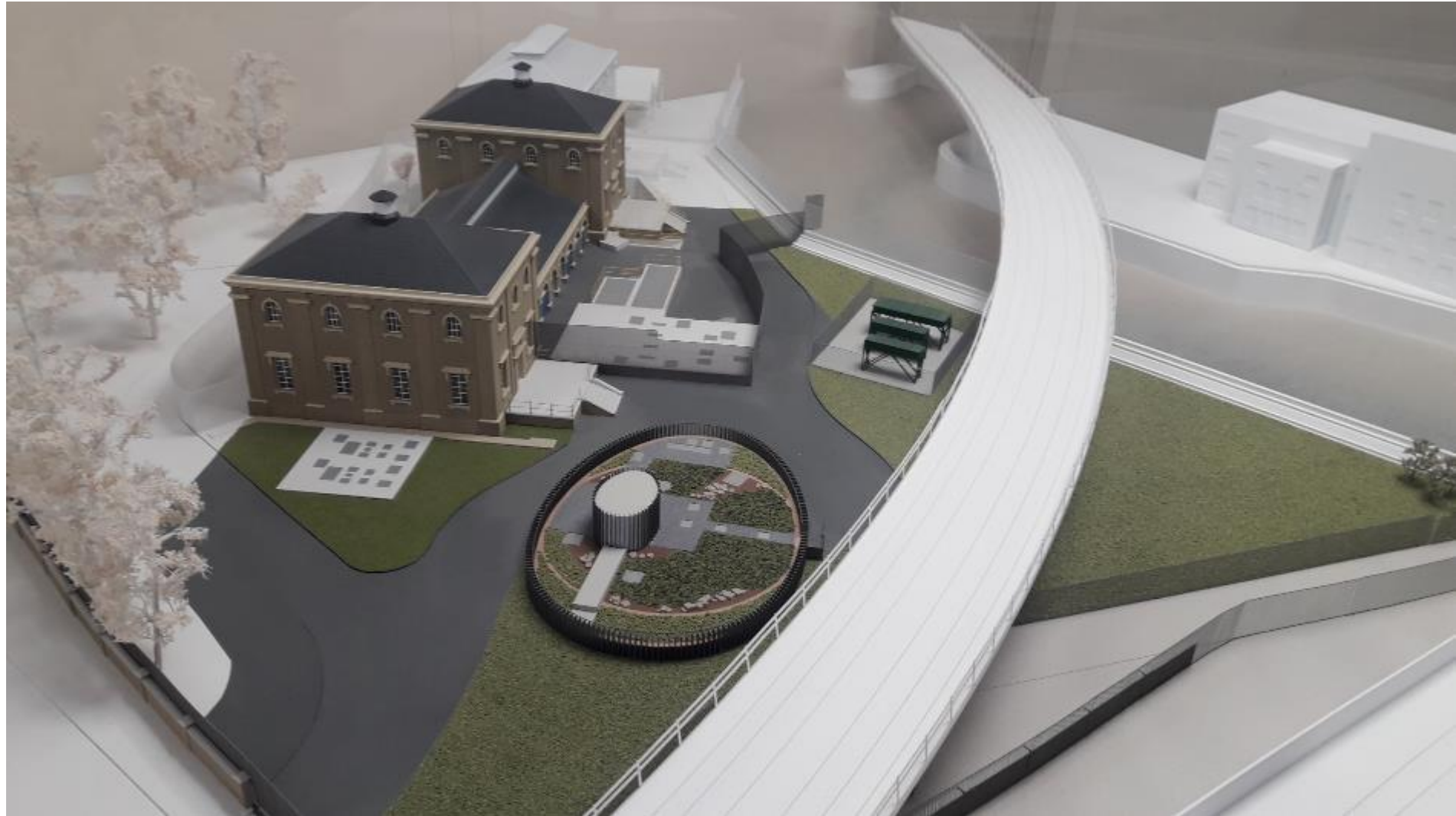
CSO

- Complete mid-level propping
- Continue excavation down to temporary prop level
- Installation of temporary props

EBEH - East Beam Engine House

- Removal of existing slab & Backfilling where needed (recycling material from Deptford Church St shaft)
- Casting of new permanent spanned slab
- Excavation of “MEICA* pit” (~3.5m deep)
- Installation of MEICA air duct & backfill

***Mechanical, Electrical, Instrumentation, Control and Automation** – the mechanics that will finally operate Tideway



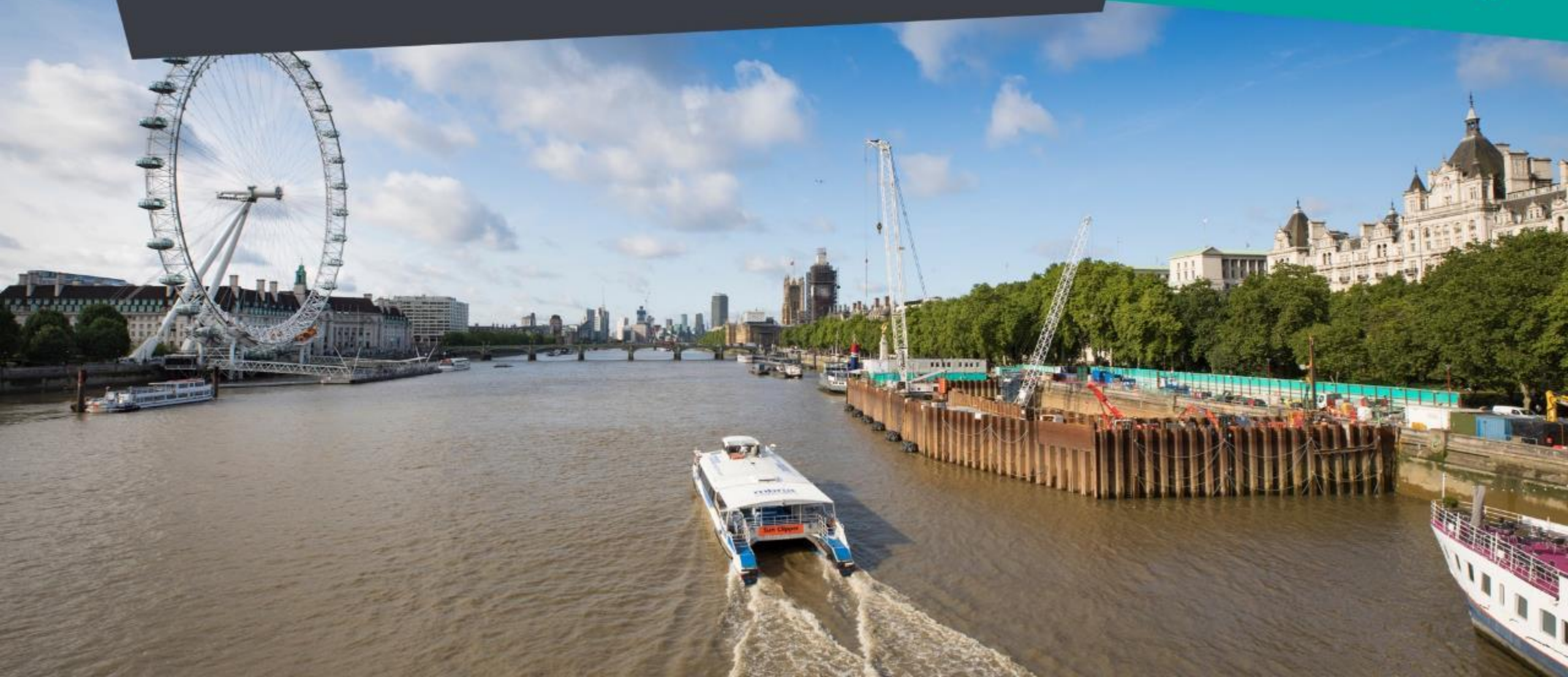
High Level Visualisation - Architecture and Landscaping at Greenwich Pumping Station

- An application to discharge Schedule 3 requirements of the *The Thames Water Utilities Limited (Thames Tideway Tunnel) Order 2014* (hereby referred to as the 'DCO') is currently being drafted for approval of the Architecture and Landscaping aspects of the Greenwich Pumping Station Upgrade.
- The Schedule 3 requirements are similar to conditions on a planning consent, with high level and 'in-principle' detail already consented as part of the DCO implementation process.
- The application aims to fulfil the design principles and ensure the site's surface amenity is restored and enhanced.
- The intent is to submit a draft application to the Royal Borough of Greenwich to allow opportunity for the borough and public to review and comment prior to formal submission. The draft application period will be for a total of 4 weeks
- Comments are to be sent to Royal Borough of Greenwich (planningapps@royalgreenwich.gov.uk) once the application is submitted.
- It is intended that this draft application be submitted in August 2021. CLWG and nearby residents will be notified upon submission of this application.

NOISE AND AIR QUALITY

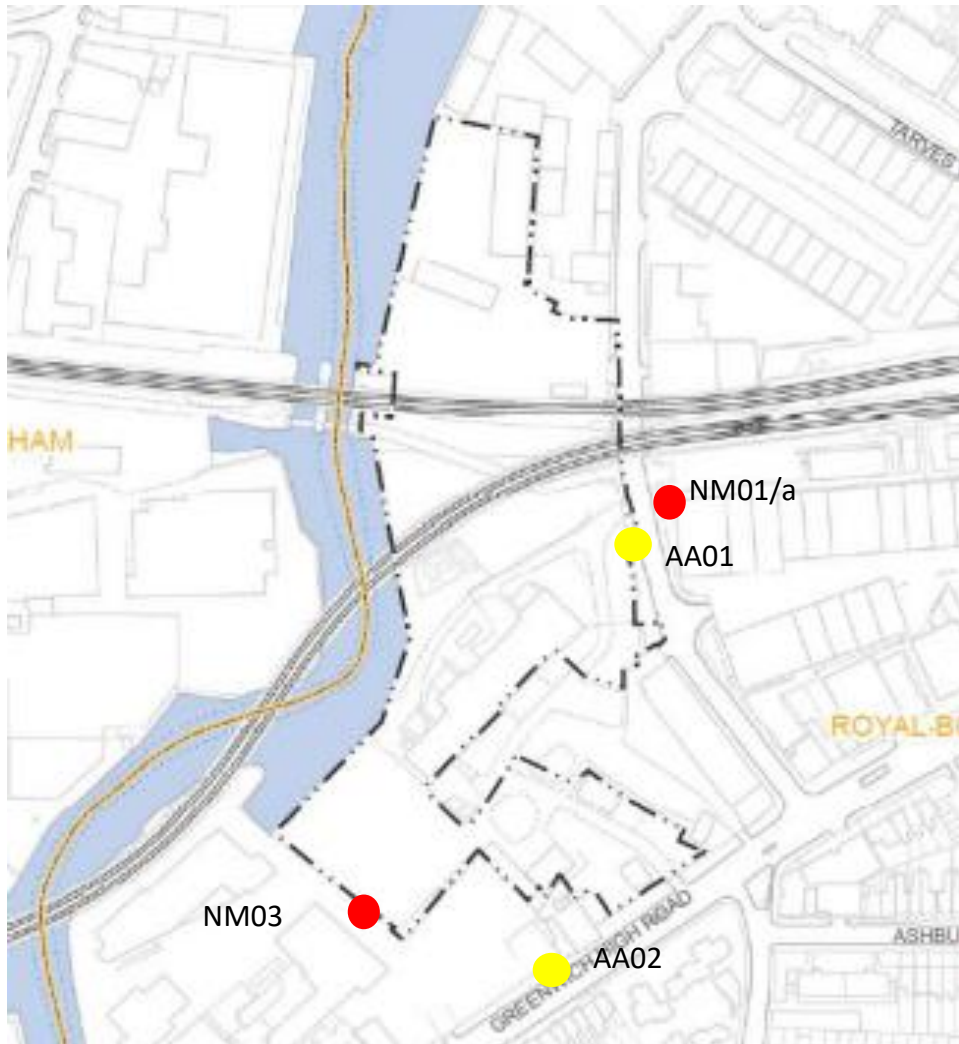


Tideway



GREENWICH PUMPING STATION

Noise and Air Quality



Month	Noise	Air Quality
	S61 Exceedances	24h PM10 exceedance
Oct-20	0	0
Nov-20	0	0
Dec-20	0	0
Jan-21	0	0
Feb-21	0	0
Mar-21	0	0
Apr-21	0	0
May-21	0	0
Jun-21	0	0

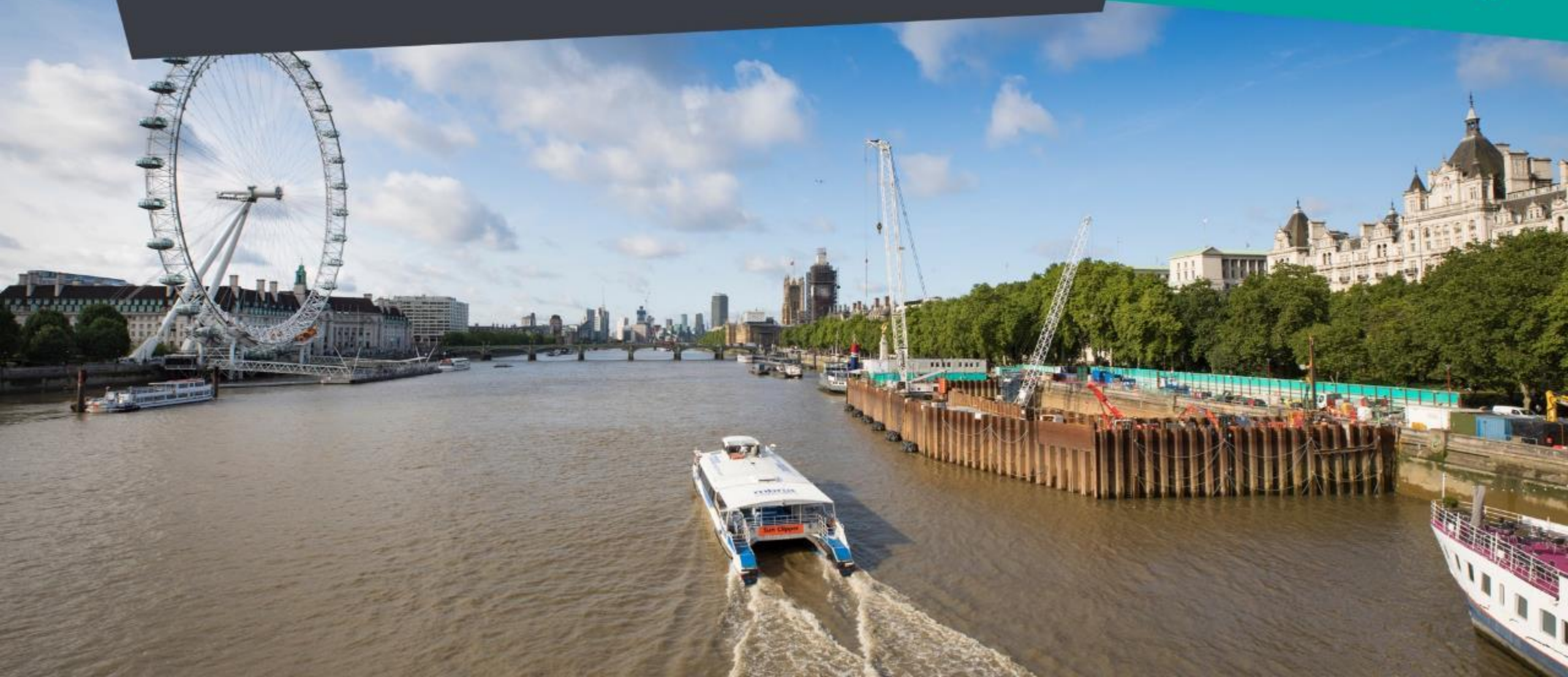
- Regular damping down and wheel washes are used to reduce risk of dust
- 45 loads of tunnel chalk taken by barge to date
- Implementing HVO biofuel across the site

**COMMUNITY
QUESTIONS AND
FEEDBACK?**

COMMUNITY INVESTMENT



Tideway



LEGACY

COMMUNITY INVESTMENT



Our commitment to the communities we are working in is to deliver our work with care and consideration and leave a lasting, positive legacy for London.

CVB Staff working on the Tideway project volunteer their time to support good causes across London, using their professional skills where they can so that we can have an even greater benefit for our charity partners.



TIDEWAY EAST HIGHLIGHTS

Skills and Employment Forum



KICKSTART SCHEME



100% Government Funded Work Placement for 16 – 24 Yr Olds

Kickstart Scheme

To support young people impacted by COVID 19 pandemic, who are at risk of being left behind in the jobs market, offering 6 month placements.

See more below :

[Want a Kickstart? - Job help \(campaign.gov.uk\)](https://campaign.gov.uk)

Increase in local employment

Employment results during covid.

67 new members of staff that live in the Royal Borough of Greenwich.

Apprentice results:

Some exceptional results with a 93% and four above 70%. Tunnelling apprentices progressing to final assessment. Some great feedback on their commitment.



LEGACY

COMMUNITY INVESTMENT



Creekside Discovery Centre

Weather Presenter - Sally Williams, along with Tideway volunteers, local children and their parents, visited the Creekside Discovery Centre to officially launch the Tideway – Creekside Community Investment partnership



Tideway is committed to supporting Creekside and its commitment to helping really wild wildlife flourish in a unique urban environment

Barges begin removing spoil via Deptford Creek for the first time

As Tunnel Boring Machine (TBM) “Annie” makes her way underground towards Chambers Wharf, we have started using Deptford Creek to remove excavated tunnel material from our Greenwich site.



Phoenix Wharf in Deptford Creek



THANK YOU



Tideway

RECONNECTING LONDON WITH THE RIVER THAMES

#SuperSewer

www.tideway.london