

# HAMMERSMITH PUMPING STATION

Community Liaison Working Group

Tuesday 5 October 2021



Tideway





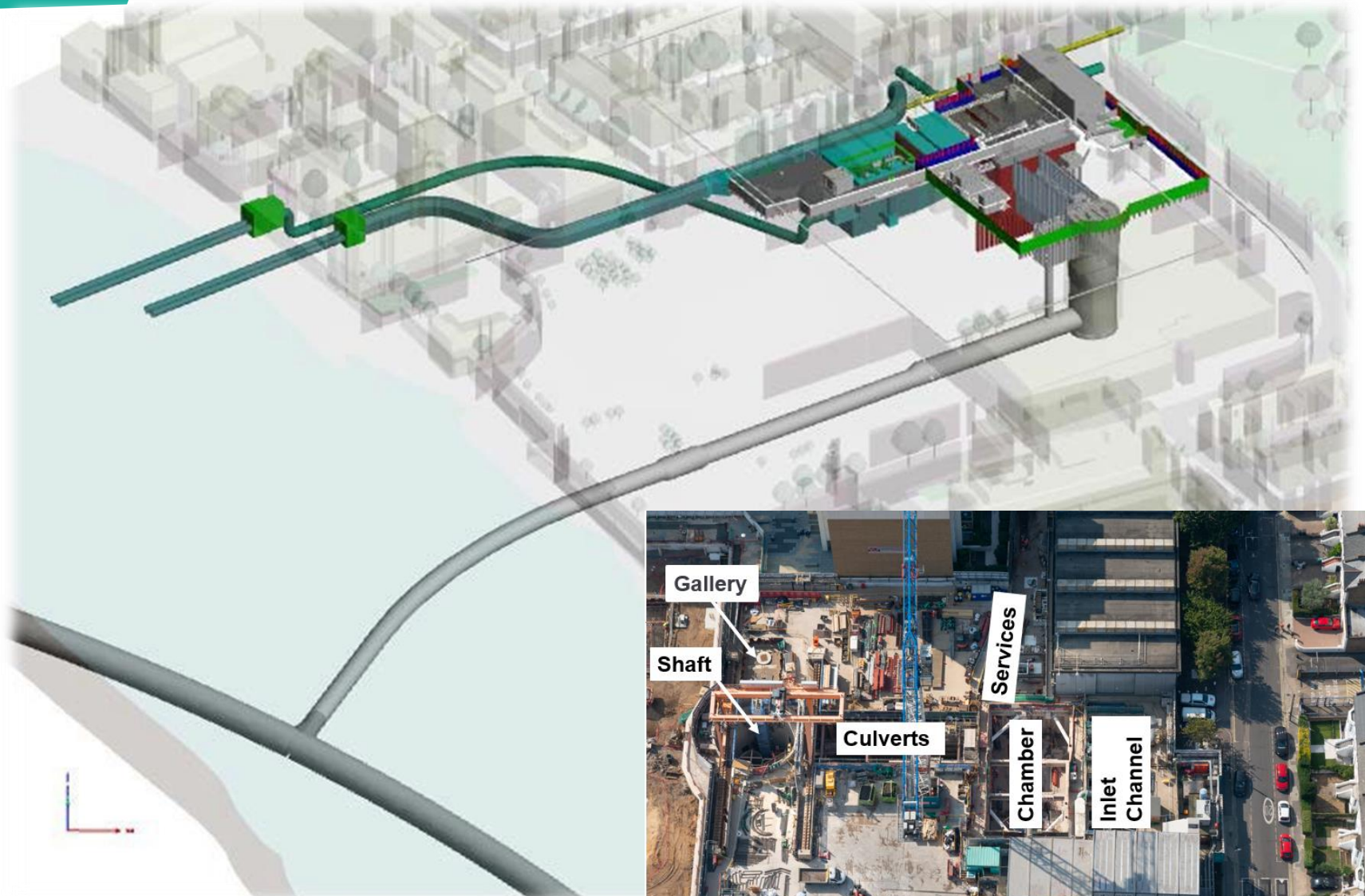
**WELCOME**

**Scott Hughes, Agent**



# Works Update

- **HAMPS tunnel** – Completed
- **Connection with main tunnel** – Completed
- **Shaft** – Vortex Generator installation & Concrete surround completed
- **Connection Culvert** – Completed
- **Deaeration Gallery** – Completed
- **Area A5 Handover** - Completed





# Works Update

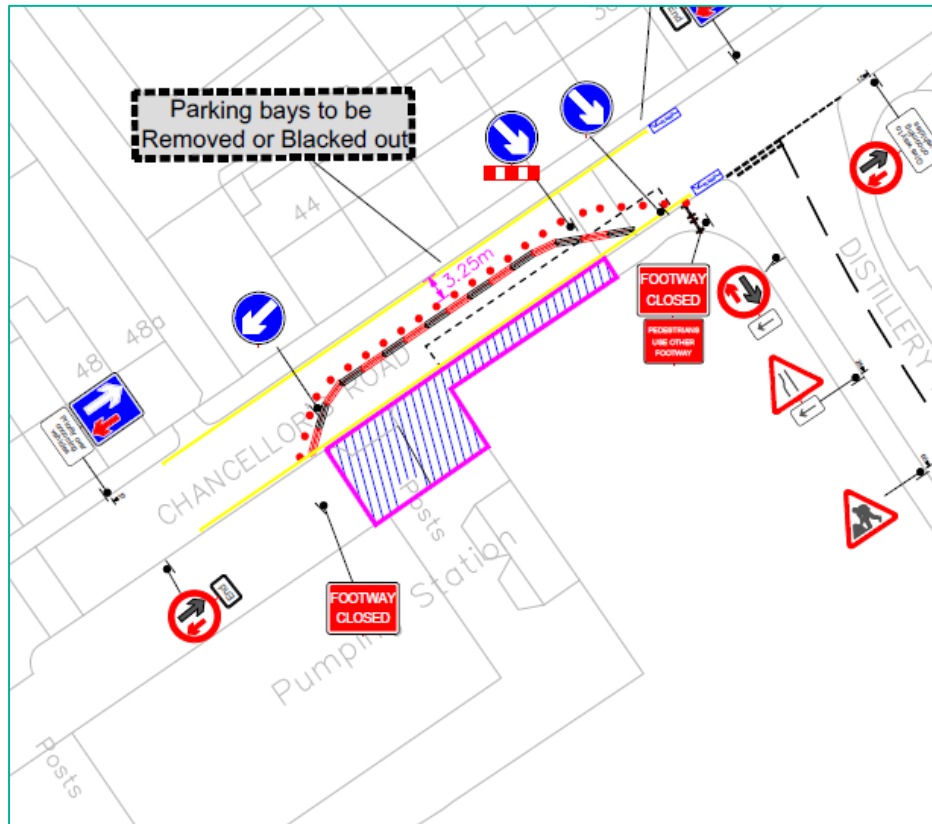
- **Shaft** – Complete
- **Gallery** – Complete
- **Culverts** – Complete
- **Chamber** – Mechanical & Electrical Fitout
- **Inlet** – Removal of props, install of weir wall, precast beams & roof slabs
- **Services** – Installation of manhole pits, attenuation tank, LV kiosk and Venturi Chamber





# Current Site Layout

- Area A5 handed over to St George
- New Pit lane placed this week
- Until February 2022





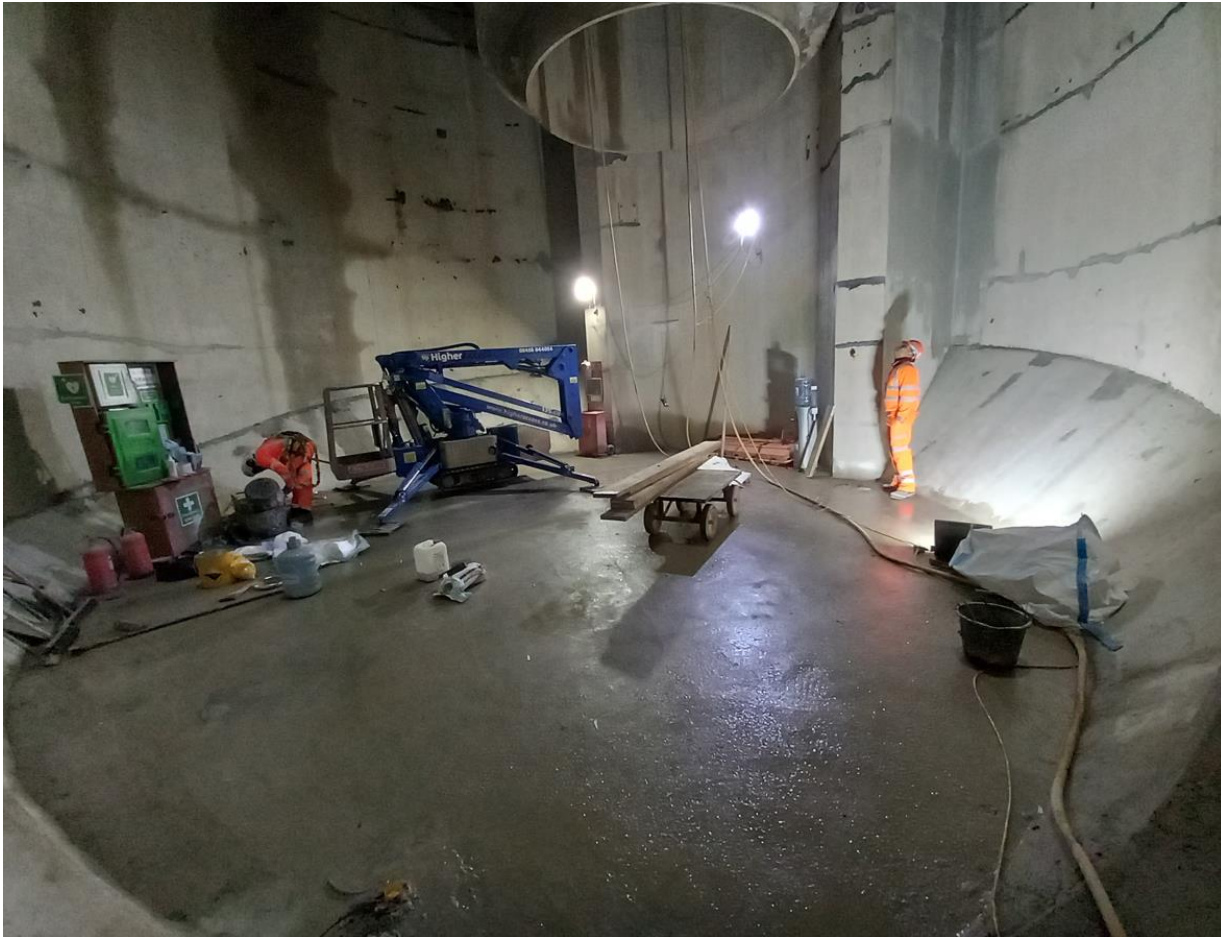
## Area A5 Handover





# Shaft & Tunnel Construction

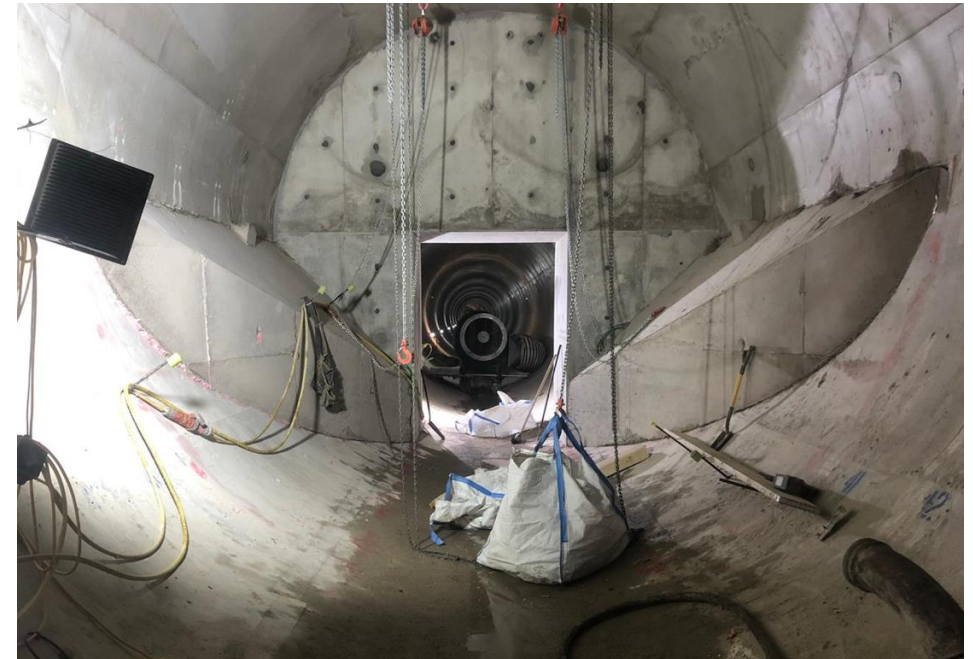
- Shaft internal concreting





# Shaft & Tunnel Construction

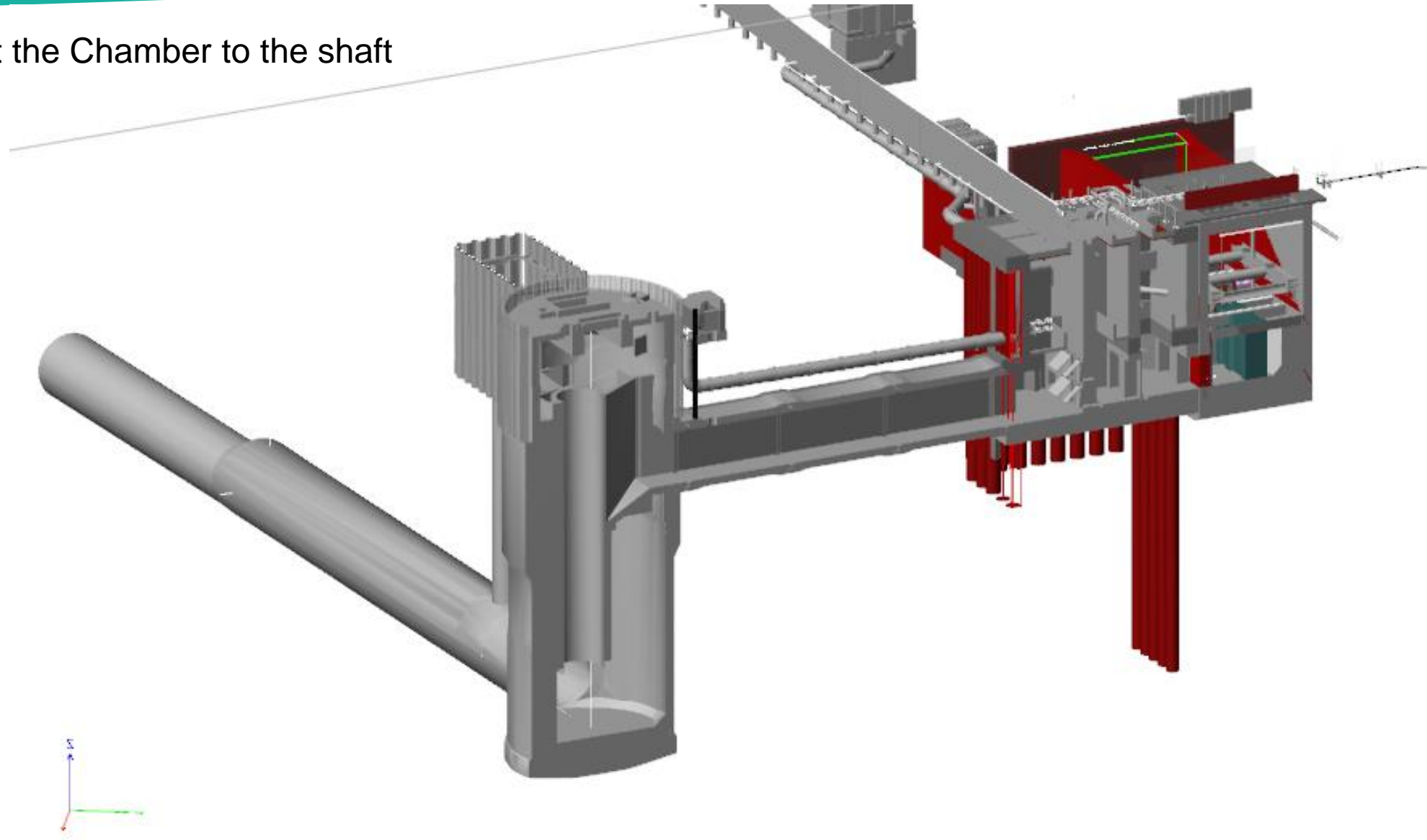
- Shaft concrete cover and upstands
- Flow restrictor wall and benching





# Culverts

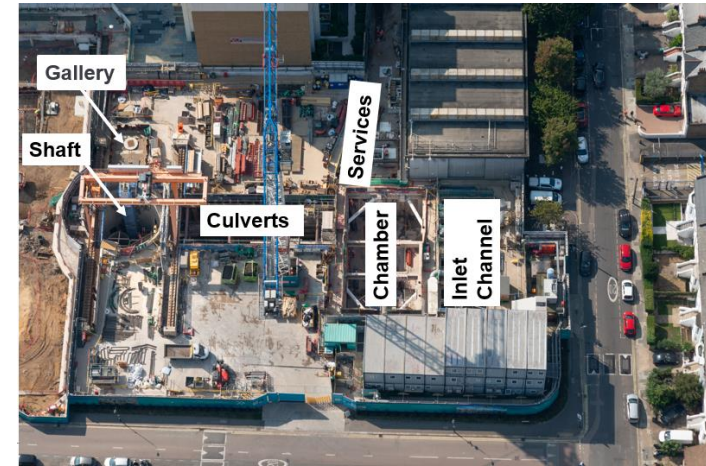
- The culverts connect the Chamber to the shaft





# Culverts

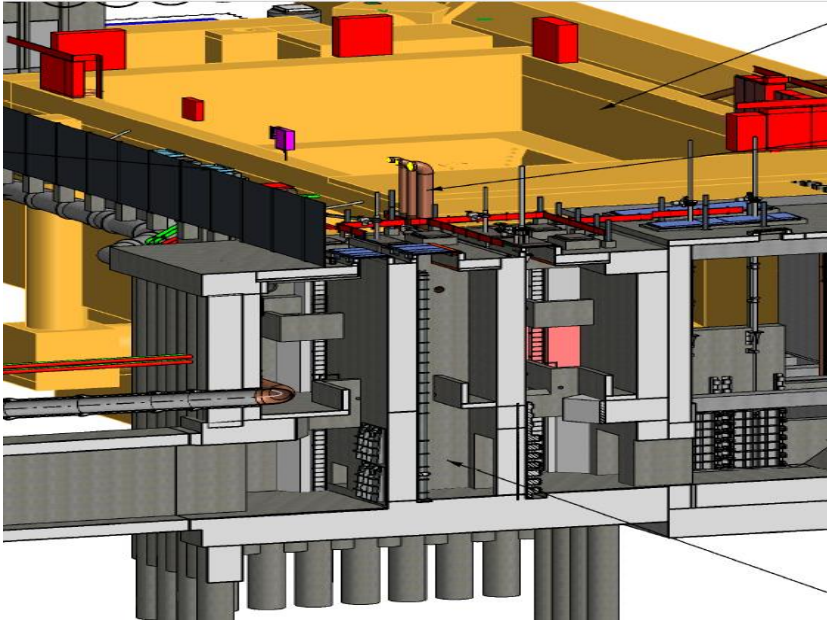
- Completion of structure and backfill to surface





# Interception Chamber

- All structural concrete complete
- Mechanical & Electrical fitout underway – penstock gates, Secondary Isolation Gates (SIGs) and Flap Valves
- Duct, vent and electrical install to commence in the coming weeks





# Inlet Channel Works

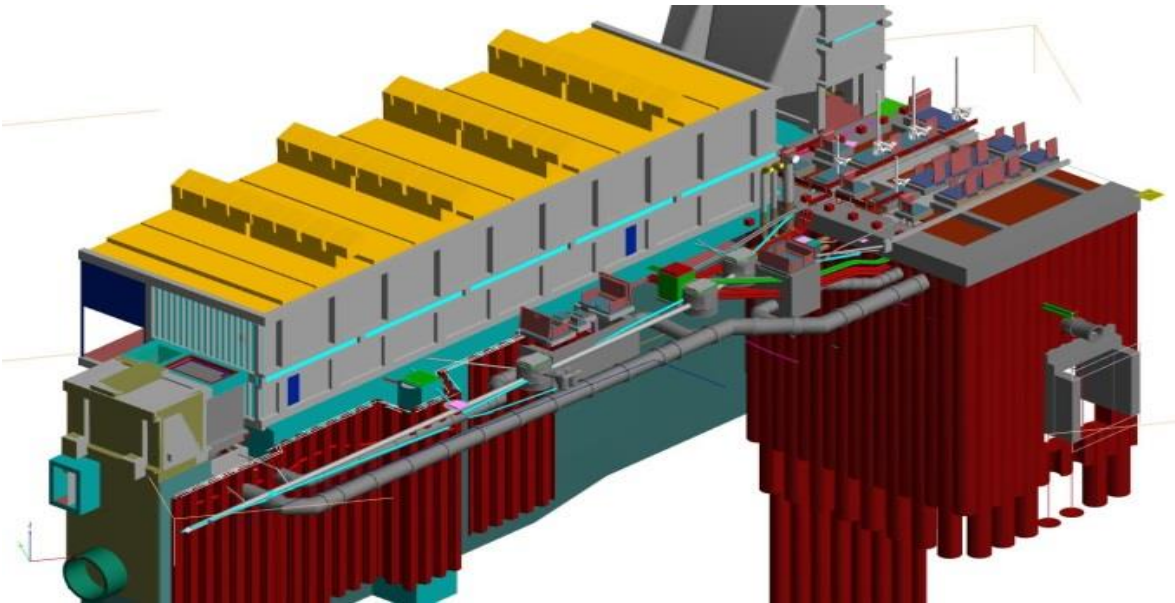
- Connection wall complete
- Permanent Weir Wall installation commenced
- Roof Beams install
- Mid level prop removal





# External Mechanical & Electrical Services

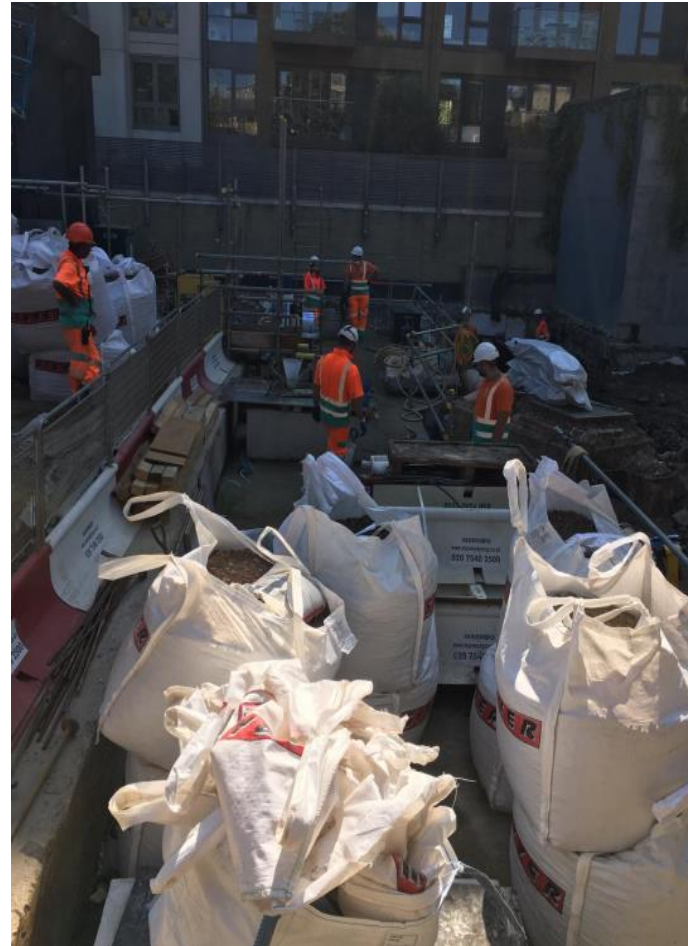
- We are continuing to construct new services around the Thames Water Pumping station
- Backfilling of the area is complete with black top to follow in November once manhole pits are complete





# Attenuation Tank

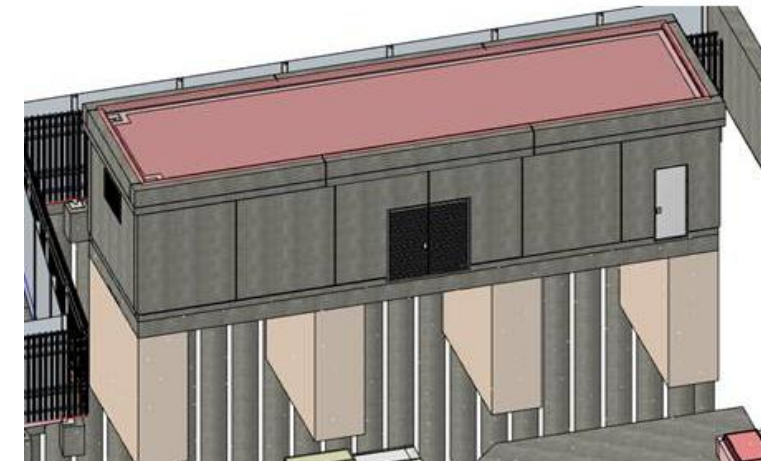
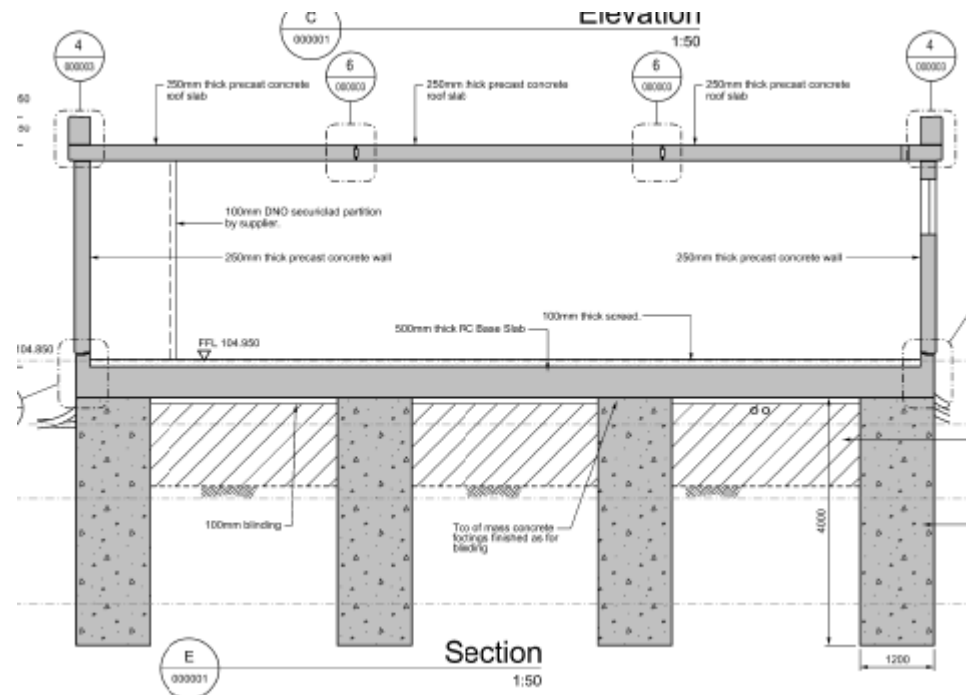
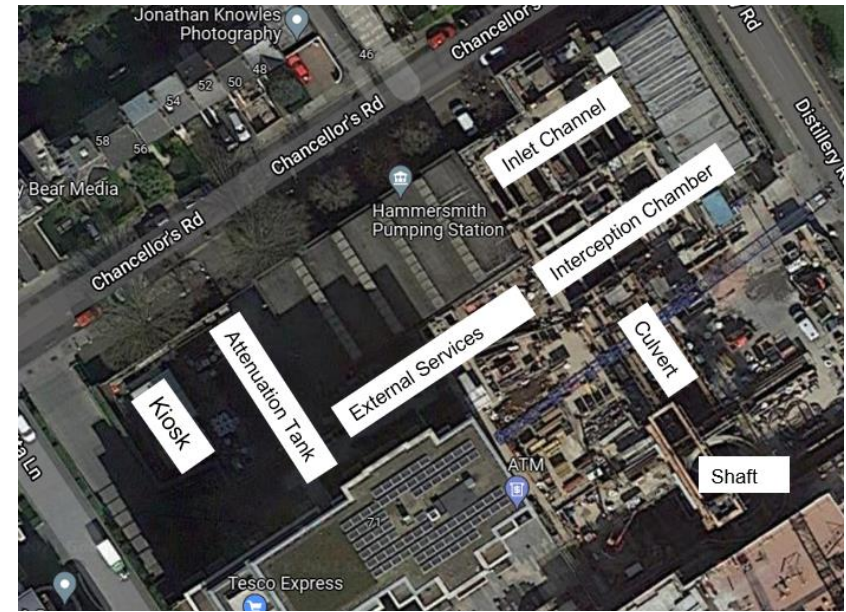
- Concrete Water storage tank
- Structural works complete with manhole pits to be installed





# Low Voltage Kiosk

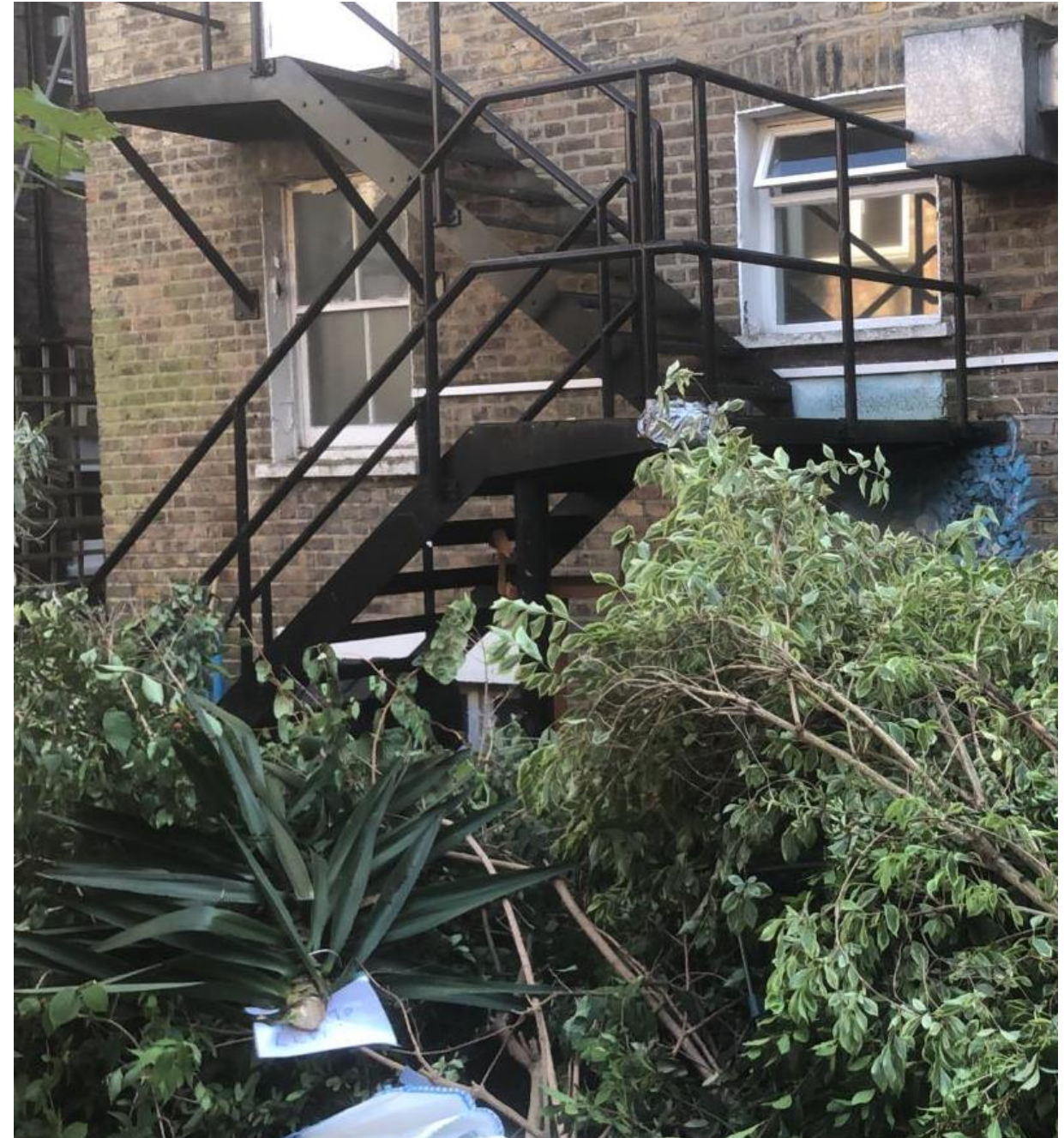
- 4no. Mass concrete footings to be constructed
- Existing sheet pile removal
- Precast concrete building





# Community Support

- Bishop Creighton House
- Community Support Project
- Situated on Lillie Road
- Provided Garden renovations
- Before ...





# Community Support

- After ...





## Next 6 Months

	Sept	Oct	Nov	Dec	Jan	Feb	March
<b>Inlet Channel &amp; Roof Works</b>							
<b>Interception Chamber Works</b>							
<b>External Services</b>							
<b>Attenuation Tank</b>							
<b>LV Kiosk Works</b>							
<b>Mechanical &amp; Electrical Fitout</b>							

- Core working hours 8am-6pm Monday-Friday and 8am-1pm Saturday
- One hour start up and shutdown periods either side of working hours



# Above Ground Design Approval



- Pumping Station artwork design approved in September 2019.

- Approval received from the London Borough of Hammersmith & Fulham for the permanent above ground design in April 2019
- The approval covers the new ventilation structures, boundary walls & fencing, hard surfacing, surface water drainage system and boundary wall design.







# KEEPING IN TOUCH

**Katie Ashton, Communications Manager**



## How To Stay Up To Date

Follow us on social media:  
**@TidewayLondon**



[en-gb.facebook.com/TidewayLondon/](https://en-gb.facebook.com/TidewayLondon/)



[www.instagram.com/tidewaylondon/](https://www.instagram.com/tidewaylondon/)



[www.linkedin.com/company/tideway-london/](https://www.linkedin.com/company/tideway-london/)



[twitter.com/TidewayLondon](https://twitter.com/TidewayLondon)

If you would like to be added to our mailing list for works updates/notifications, email [helpdesk@Tideway.London](mailto:helpdesk@Tideway.London)



## How To Get In Touch

All enquiries have been responded to within 24 hours (where possible)



**Call:** 08000 30 80 80

**Email:** [helpdesk@tideway.london](mailto:helpdesk@tideway.london)

**Write to:** Freepost TIDEWAY



**0800 316 9800**

Available 24 hours, 7 days a week to answer all enquiries & complaints related to the operations and maintenance of the site





**QUESTIONS**





**Tideway**

# **RECONNECTING LONDON WITH THE RIVER THAMES**

**#SuperSewer**

[www.tideway.london](http://www.tideway.london)