

# CHAMBERS WHARF S106 COMMUNITY ENHANCEMENT FUND

September 2021

Author: Jacqueline Christie



# Background

- Southwark Council and Thames Water have agreed upon a S.106 Legal Agreement, as part of the Chambers Wharf Worksite Development.
- Under this agreement Thames Water have agreed to fund a number of projects in the local area surrounding the Chambers Wharf site.
- The section 106 agreement funds two programmes (1) a set of agreed infrastructure projects and (2) a community fund
- One of the projects in this agreement is the 'Community Enhancement Fund'. It totals at £1million and is managed by Southwark Council.
- The Community Enhancement Fund exists to provide specific measures to benefit the local community affected by the construction activities associated with the development at Chambers Wharf.

# Framework for the CEF fund

Under legal agreement Thames Water have agreed to fund a number of projects in the local area surrounding the Chambers Wharf site. This is set out in with accordance with the details and terms in the agreement.

## Key points

- Financial contributions to local infrastructure projects in the area adjacent to Chambers Wharf including local schools, play facilities, transport improvements.
- Terms of reference for the establishment of a Community Liaison Working Group (CLWG) for local residents to find out the latest information and to raise questions and any concerns: 72% of all materials brought to the works site are transported by river taking thousands of vehicles off the road so improving the environment for local residents.
- Terms of reference for the expenditure of a £1m Community Enhancement Fund (CEF) with clear guidance on how local people can submit project ideas, and a how a local panel of stakeholders can oversee the expenditure.
- A set of obligations on the contractor to create local employment and skills outcomes for residents in Southwark.

# CEF BREAKDOWN

- The Unilateral Undertaking signed with Thames Tideway in 2014 secured approximately an indexed-linked £5,385,000 which has been allocated and spent on local infrastructure projects .
- The community enhancement fund is £1,000,000 payable annually over 7 years.
- The community enhancement fund has £665,669 remaining to spend on local community projects.

# PROGRAMME (1)

## INFRASTRUCTURE PROJECTS

# INFRASTRUCTURE PROJECTS

The total spend is **£5,385,000** which includes indexation which is paid annually and allocated to funds received.

<b>Projects</b>	<b>Update</b>	<b>Amount</b>
Chambers Street footpath	Minor works has been carried out. Agreement with the engineers to wait until construction is complete.	£150,000
NCN4 Riverside quiet-way(renamed cycleway 4)	Highways scheme open September 2020.	£250,000
Safer routes to school	Programme completed.	£100,000
Jamaica Road crossing	Programme completed.	£300,000
Lower Road Gyratory	Design works ongoing.	£250,000
	<b>Total</b>	<b>£1,050,000</b>

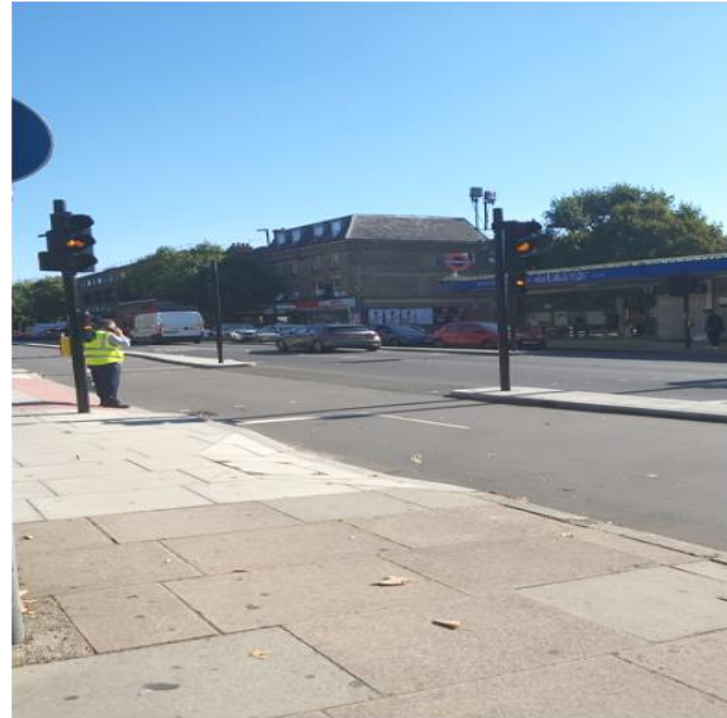
# CYCLEWAY 4

Tower Bridge to Lower Rd section opened at the end of September 2020. There is now a continuous 2km bidirectional cycle lane and key improvements for pedestrians. Cost **£250,000**



# JAMAICA ROAD CROSSING

Tideway helped fund the Jamaica Road Gyratory projects which has now been completed **£300,000**.



Lower road gyratory on going **£250,000** Chambers  
Wharf footpath work to be completed **£150,000**.

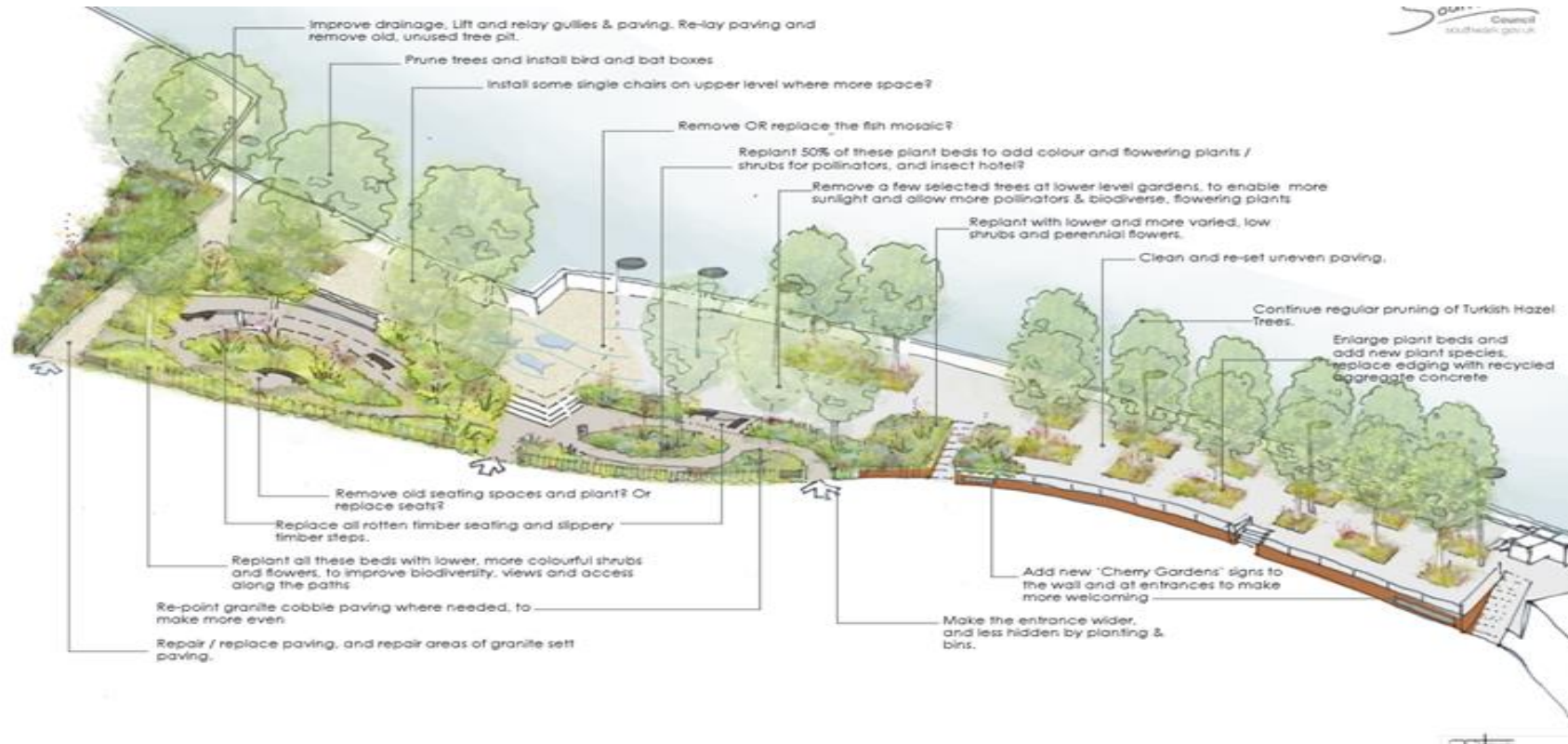


# SCHOOLS & STAFF

<b>Projects</b>	<b>Update</b>	<b>Amount</b>
Riverside Primary	Payable annually (7 years). A release report was approved by the committee on the 16 July 2018. Included all funding received and future funding.	£1,664,000
St Joseph's Primary		£350,000
St Michaels Secondary		£760,000
Monitoring Officer	Paid directly to schools by Southwark education department.	£400,000
Indexation	Payable annually and allocated to funds received	£261,000
	<b>Total Amount</b>	<b>£3,435,000</b>

# THAMES PATH LANDSCAPING IMPROVEMENTS

The consultations programme has now been completed for the Thames Path opposite Cherry Gardens. The final design are now being drawn up. The cost of the project is **£300,000** and work is due to begin on site in spring 2022.



# GEORGE ROW PLAY SPACE

This project is managed by Southwark cleaner greener safer team. The final consultation has now been completed and tenders will go out in August 2021. Work is due to start on the site by the end of the year. The cost for the project **£400,000**



**£200,000** is available to spend on other play projects.

# GEORGE ROW PLAY SPACE FINAL DESIGN

Agreed final design.



A Short film about the project and design is available.

<https://youtu.be/jMBupqMkpD4>

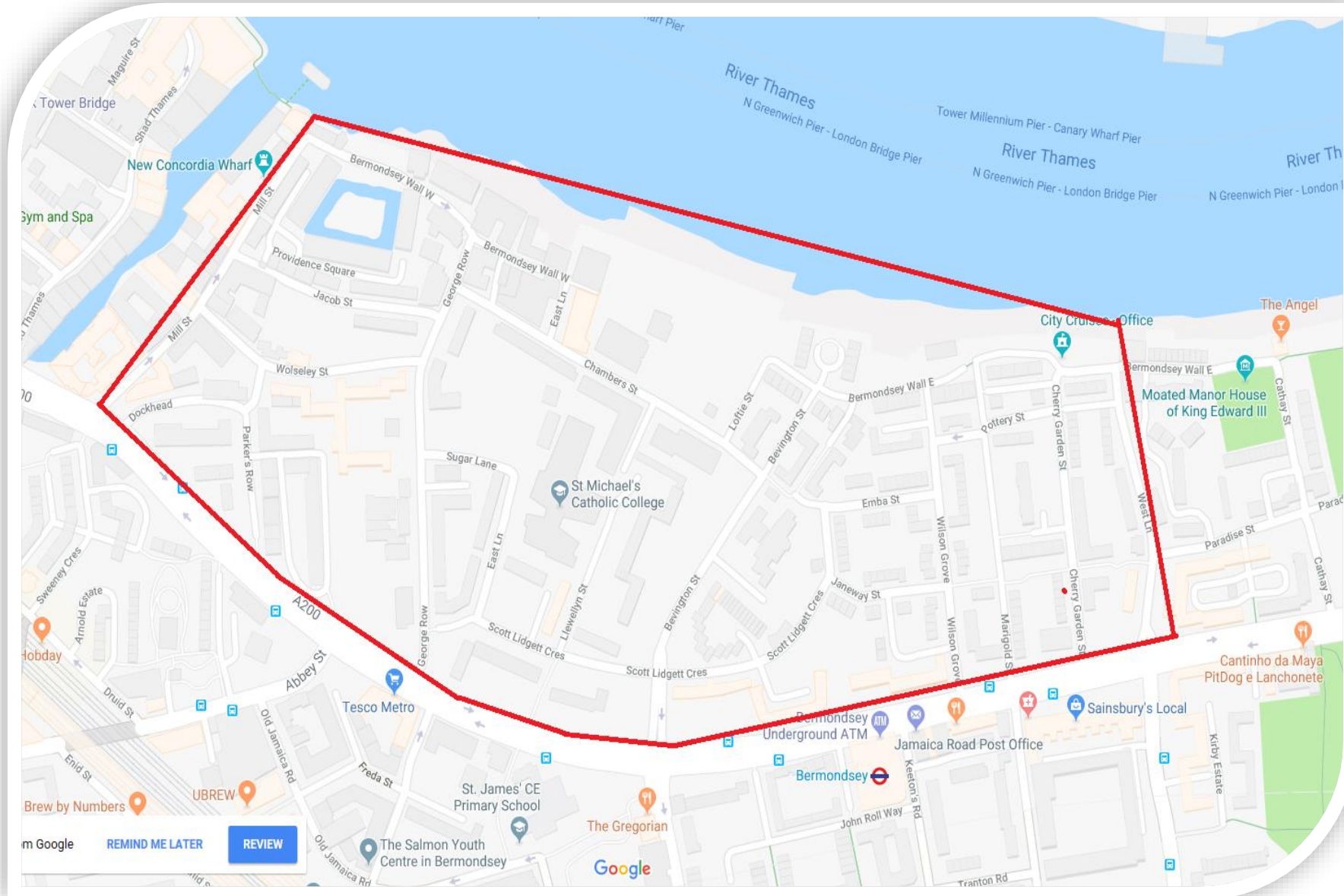
# PROGRAMME (2)

## THE COMMUNITY FUND

# RED ZONE

- As part of the Development Consent Order, issued for the Thames Tideway Tunnel Project, a stipulated red line adverse impact area was set out for the Chambers Wharf worksite.
- The red line area is where the Community Enhancement Fund money must be spent, in order to mitigate the harm from the site, and improve the lives of local residents.
- Applications are allowed which are based outside of the red line area, on the strict basis that local residents from within the red line area can benefit from the project.

# RED ZONE



# HOW THE CEF WORKS

The Community Enhancement Fund exists to provide for specific measures to benefit the local community affected by the construction activities associated with the development at Chambers Wharf. Community Enhancement Fund totals is £1million (paid in 6 annual instalments) and is managed by Southwark Council.

Each year 2 rounds of voting are held where each applicant will be asked to present their proposal to the local community panel.



# WHO CAN SUBMIT A COMMUNITY PROPOSAL?

The S.106 Legal Agreement states who can submit a proposal:

- Any local residents organisation
- Any local business organisation
- Any of the local schools
- Local individuals and/or organisations

Elements that have to be included:

- The purpose of the project
- The benefits to the local community from this project
- The amount of funding your project is seeking in total
- It must include a risk assessment

# COMMUNITY APPLICATION OVERVIEW

- To date there have been 5 separate voting events.
- A total of 36 applications have been submitted by local residents.
- 27 applications were approved, with 9 being refused.
- The approved projects that have not completed are at different stages due to Covid restrictions.

# S106 COMMUNITY PROJECT SPEND

<b>Voting event</b>	<b>Year</b>	<b>Number of Projects</b>	<b>Total spend</b>
1	2017	7	£78,100
2	2018	3	£57,400
3	2019	6	£134,824
4	2020	6	£22,995
5	2021	5	£41,012
<b>Total</b>		<b>27</b>	<b>£334,331</b>

# THE COMMUNITY FUND

## Improvements

# 2019 Improvements to the process

In 2019 surveys were completed by the panel members this result in changes to the process:

- Increasing the panel members
- There is no limit on how many different applications you can submit.
- The council would not approve a bid which the 3 Ward Members or the Chair of the Community Council disagrees with.

# Improvements for 2021

## **Applications**

- All applications will now have to provide information on other funding's they are in receipt of or have apply for.
- Risk assessments for Covid must now be included with all applications meeting the last government guidelines.

## **CEF Webpage**

- Here the local community can find out about the fund from Southwark council website.
- Apply for funding using a standard application form (with additional and supporting documents).
- Get the latest updates on live projects.

## **Engagement strategy**

- Increasing awareness by producing publicity.
- Flyers to be posted on all local notice boards, shop fronts and delivered to residents in area.
- Standard feedback forms to be completed by all applicants applying for funding and samples from individuals and groups taking part in CEF projects.
- Promote CEF using social media.

# What more can we do

Here are some ways we can discuss how to improve the CEF keeping within the legal agreement to maximise its impact over the coming in years.

- Involve charities
- Walking tour for best practices
- Independent project advisor
- Potential independent chair of panel
- Other ideas?