

# CREMORNE WHARF DEPOT COMMUNITY LIAISON WORKING GROUP

9 November 2021



Tideway





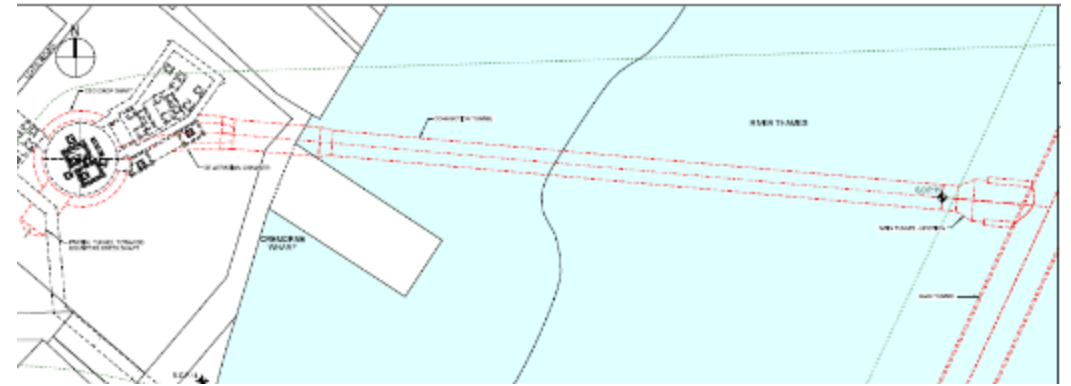
# **CREMORNE WHARF DEPOT SITE UPDATE**

**Toma Schonkeren  
Project Manager**

# Connection Tunnels

## Connection Tunnel Secondary Lining Complete

- 147m length
- Joins the CSO shaft to the main works tunnel



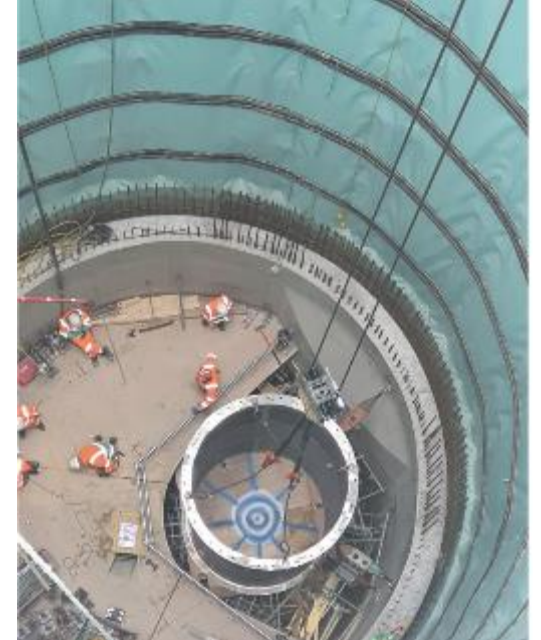
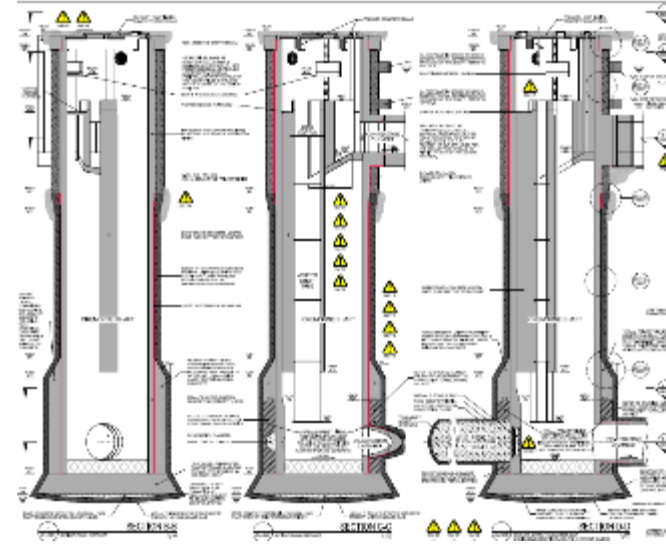
# CSO Shaft

## CSO Shaft

- 24 Pours to complete
- Currently on Pour 8
- Vortex Segment 5 & 4 Installed



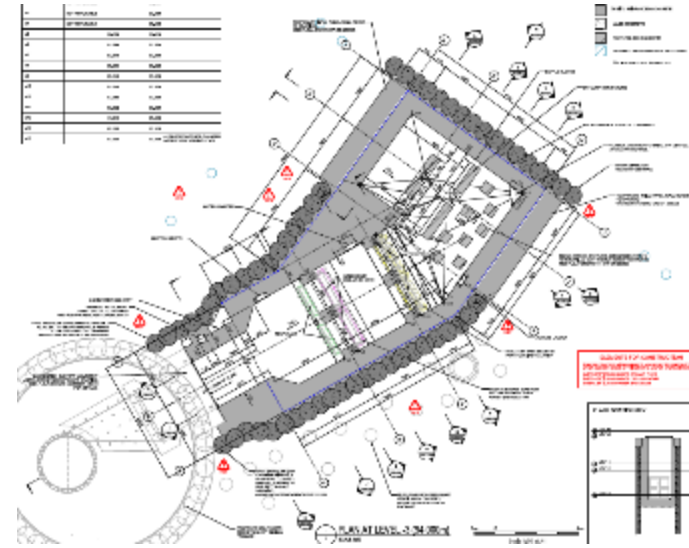
- Total Concrete Volume
- 1189m<sup>3</sup>



# Interception Chamber

## Interception Chamber

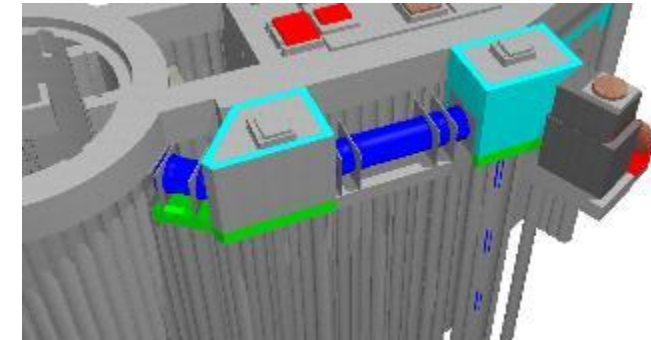
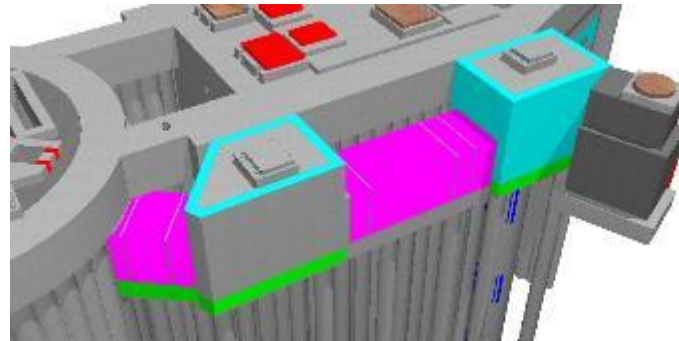
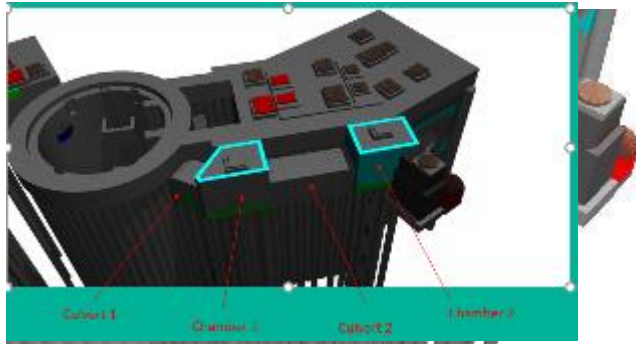
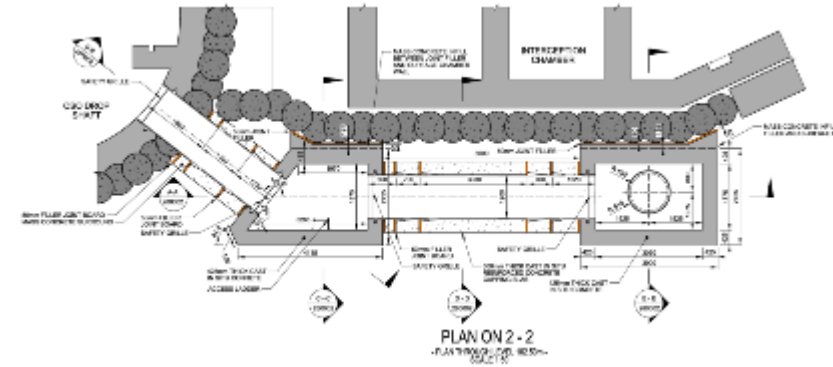
- 5 Levels RMD Temporary Propping
- 3 pour height levels
- Temporary Flume holding Counters Creek Sewer



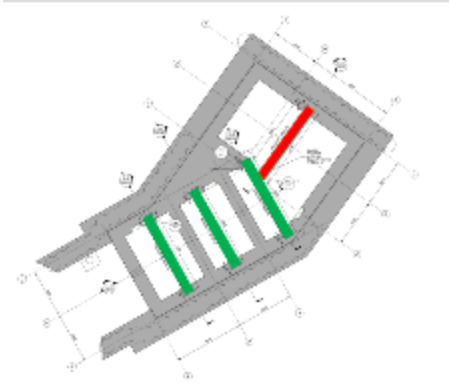
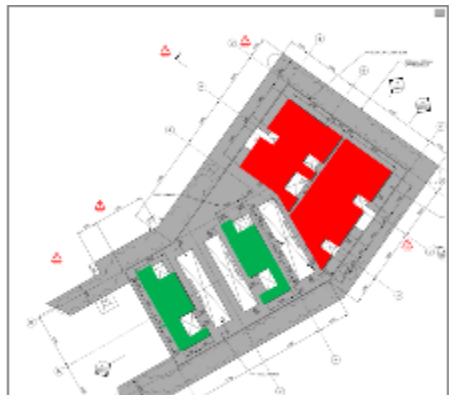
# Upcoming Works Spring 2022

## De-aeration Chamber

- Commencing January 2022
- Concrete Volume 70m<sup>3</sup>



## Precast Roof Beams & Plank Installation Interception Chamber



PRECAST CONCRETE PANEL SCHEDULE					
PANEL NUMBER	MAXIMUM LENGTH (mm)	MAXIMUM WIDTH (mm)	AREA OF PANEL (m <sup>2</sup> )	GROSS WEIGHT OF CONCRETE (kN)	COMMENTS
P1	825	750	618.75	2.5	CHANNEL CONNECTION TO PANEL 2
P2	2275	1750	3981.25	16.4	CHANNEL CONNECTION TO PANEL 1 & 3
P3	1750	1000	1750.00	13.5	CHANNEL CONNECTION TO PANEL 2
P4	825	525	433.125	1.9	CHANNEL CONNECTION TO PANEL 5
P5	825	550	453.75	1.3	CHANNEL CONNECTION TO PANEL 6
P6	2275	1000	2275.00	18.3	CHANNEL CONNECTION TO PANEL 4 & 7
P7	1600	1000	1600.00	13.5	CHANNEL CONNECTION TO PANEL 6
P8	4500	2500	11250.00	85.1	CHANNEL CONNECTION TO PANEL 9 TO 11
P9	850	845	716.25	2.6	CHANNEL CONNECTION TO PANEL 8
P10	875	950	831.25	2.6	CHANNEL CONNECTION TO PANEL 8
P11	1725	950	1638.75	9.0	CHANNEL CONNECTION TO PANEL 8
P12	3050	2400	7320.00	27.7	CHANNEL CONNECTION TO PANEL 8
P13	3050	1750	5337.50	21.3	-
P14	3050	2250	6862.50	28.5	-

## Upcoming Works Spring 2022

### Fender Pile Removal Works

- Removal of 2 no. steel temporary fenders February 2022
- Campshed remains



### MEICA Installation Interception Chamber

- Penstock Installation February 2022
- Flap Valve Chamber Works
- Air Treatment Chamber Works Filter install March 2022

# **CREMORNE WHARF DEPOT ENVIRONMENT UPDATE**

**Jennifer Collier  
Environmental Lead**

## How we are managing the site

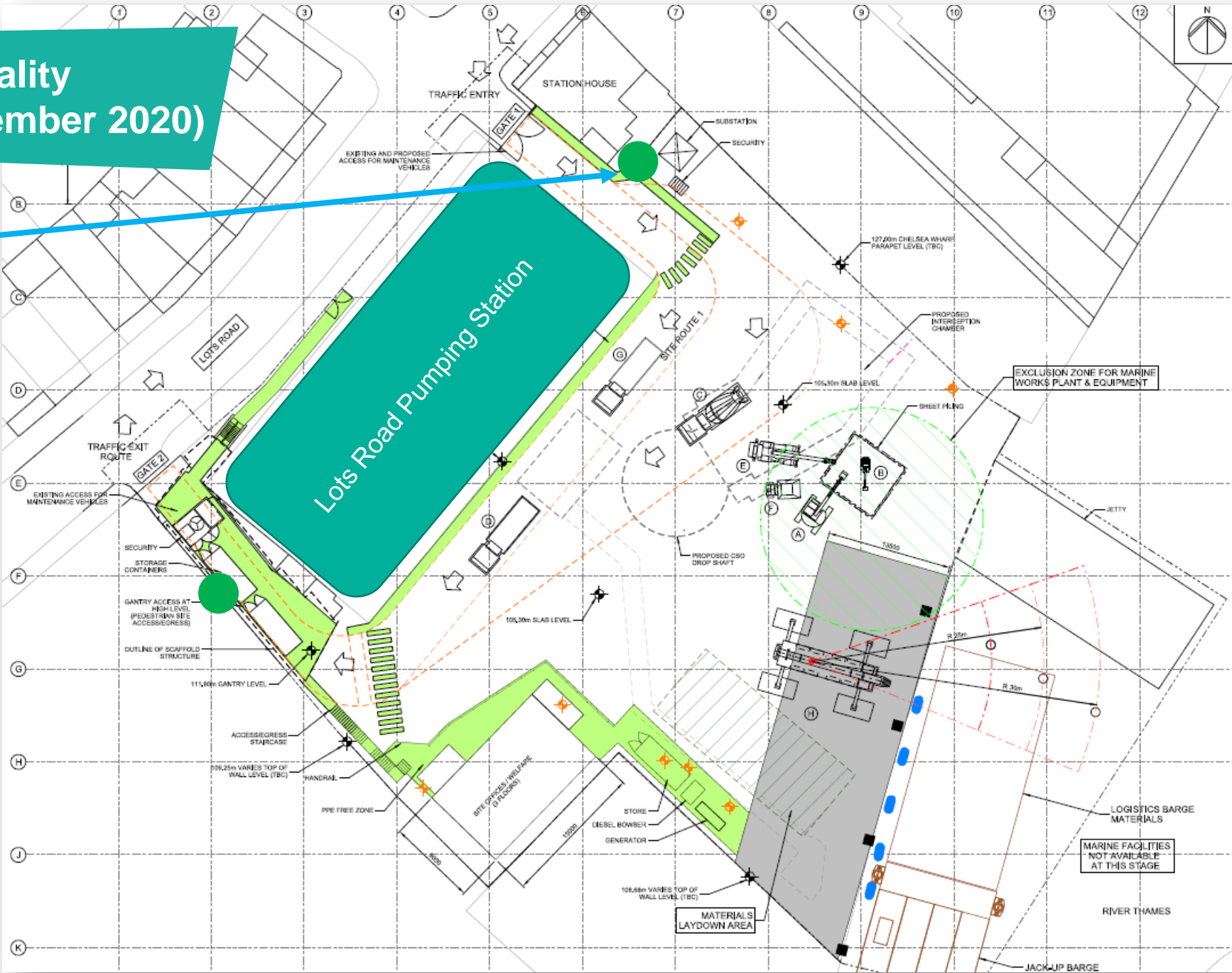
- Regular dust sweeper
- Spraying down works when needed
- Daily activity briefing highlighting measures in place
- Acoustic blankets installed around areas identified as potentially causing some disturbance – e.g. generators
- 24/7 helpline for residents who are disturbed
- Lights on site turned away from residents when safe to do so



# Cremorne Wharf Depot Air Quality Monitoring (September – November 2020)

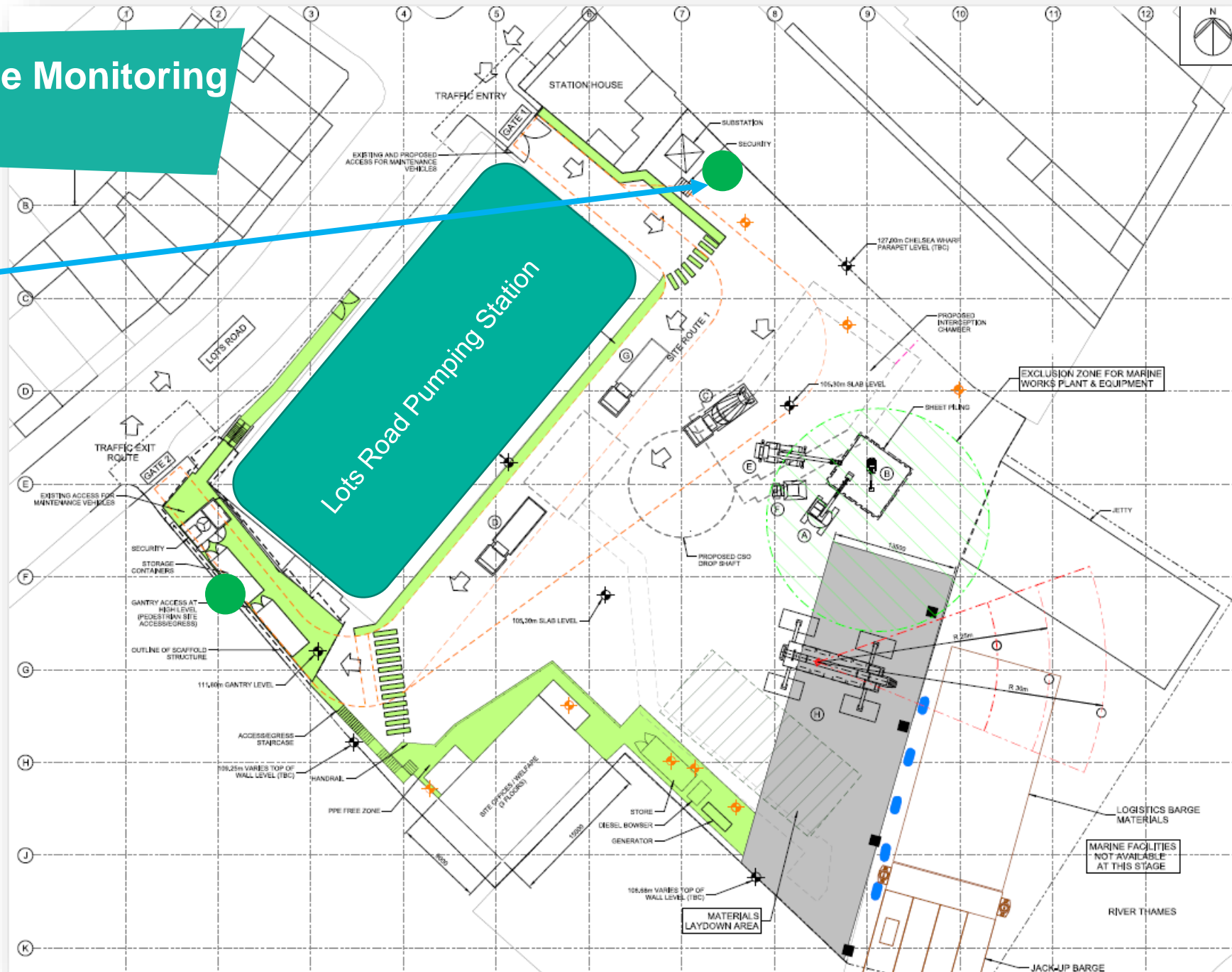
Air Quality Monitor

Air Quality Exceedances:  
0 Exceedances



# Cremorne Wharf Depot Noise Monitoring

**Noise Exceedances:**  
1 Exceedance – caused  
by break out adjacent to  
the monitor on  
16/10/2021

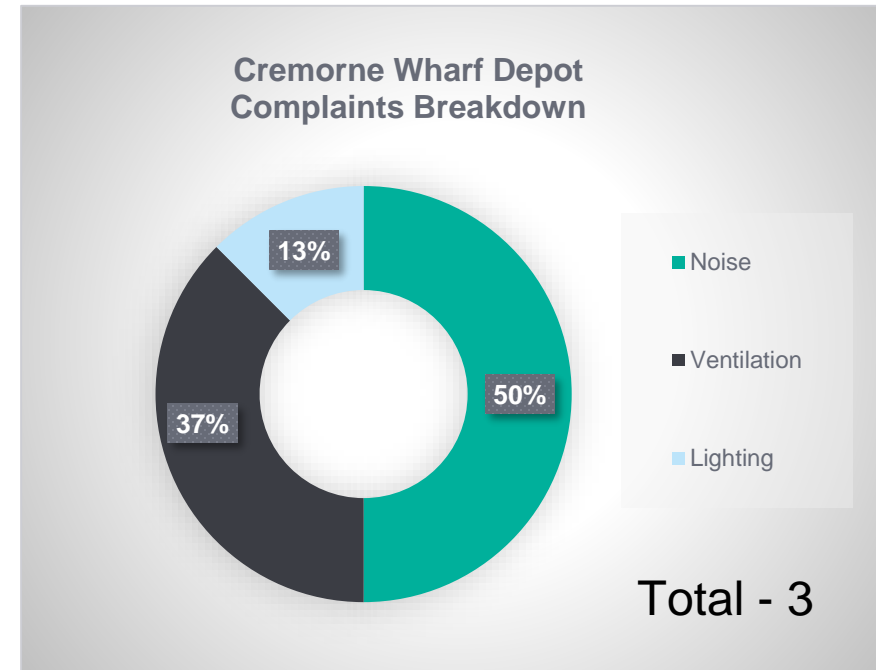
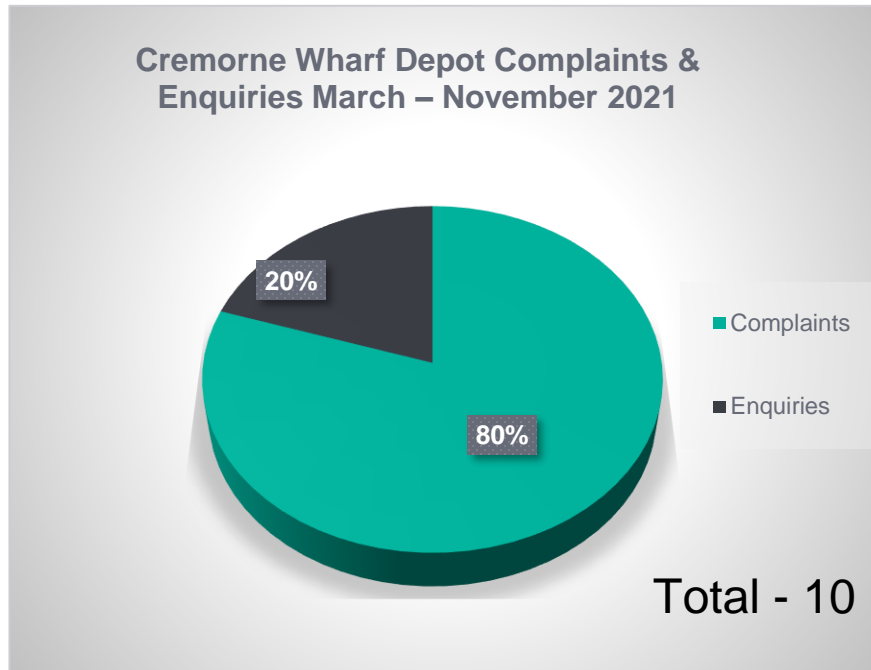




# **COMMUNITY ENGAGEMENT UPDATE**

**Alick Whitfield**  
**Community Relations Manager**

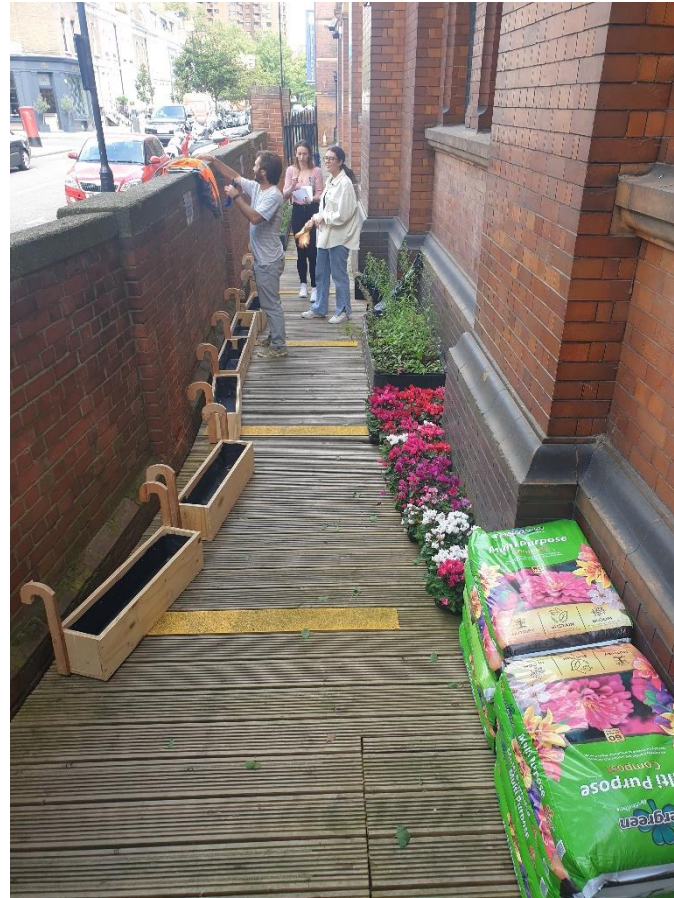
# Complaints & Enquiries (March – November 2021)



## Complaints & Enquiries:

- Noise
- Ventilation service
- Lighting
- General Site information

# Litter pick and decorating the site for Chelsea in Bloom





**UPDATE FROM  
THAMES WATER**

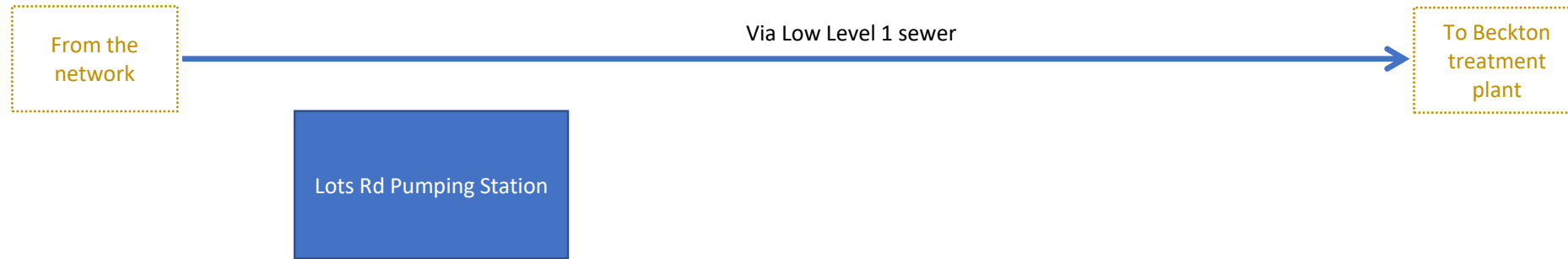


# Lots Road Pumping Station

Thames Water

## Existing Pump Station Operation - Pre-Tideway

### Dry weather

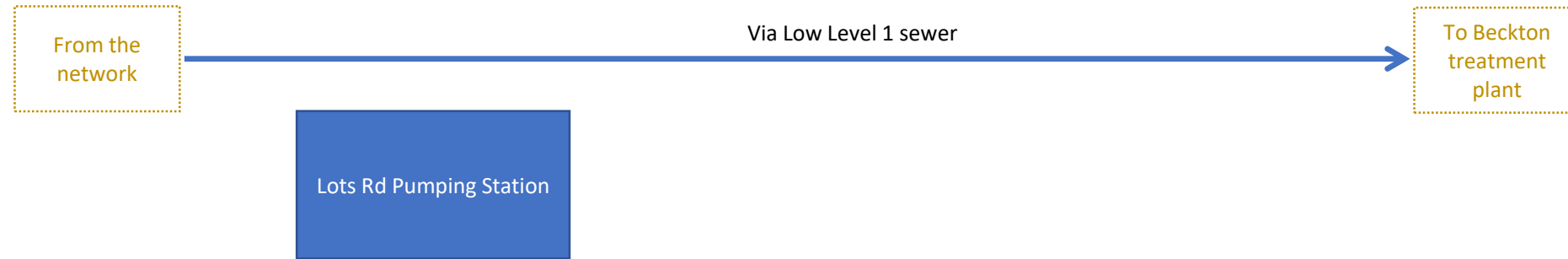


### Storm conditions

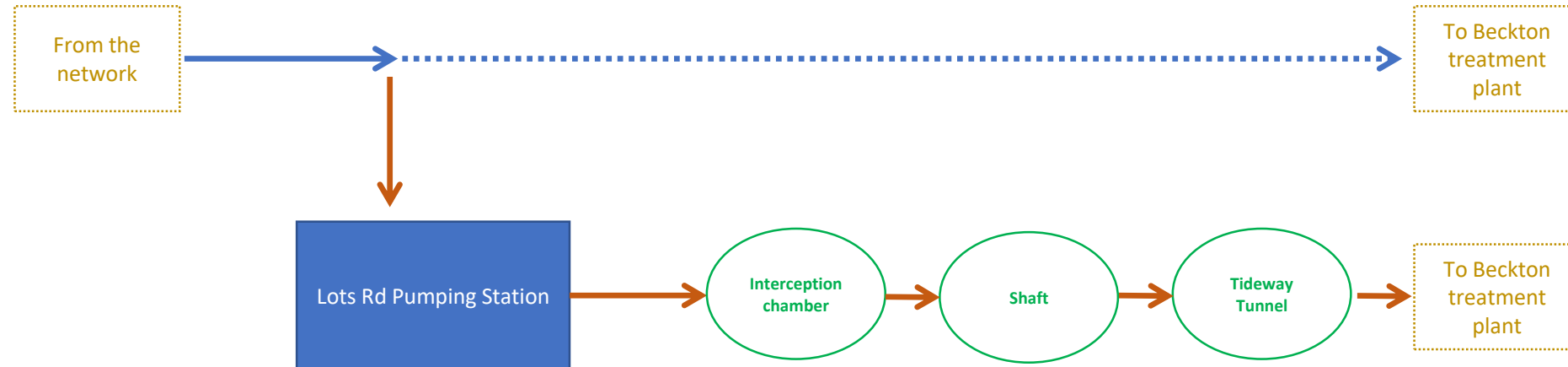


## Future Pump Station Operation - Post-Tideway

### Dry weather



### Storm conditions



# In Summary

- The Lots Rd pumping station will remain after completion of the Tideway project
- It will pump at the same frequency, the only change being where it pumps to
- Once complete, it will pump wastewater into the tunnel rather than the River Thames. The tunnel takes wastewater to Beckton via Abbey Mills for treatment before discharge back into the environment.

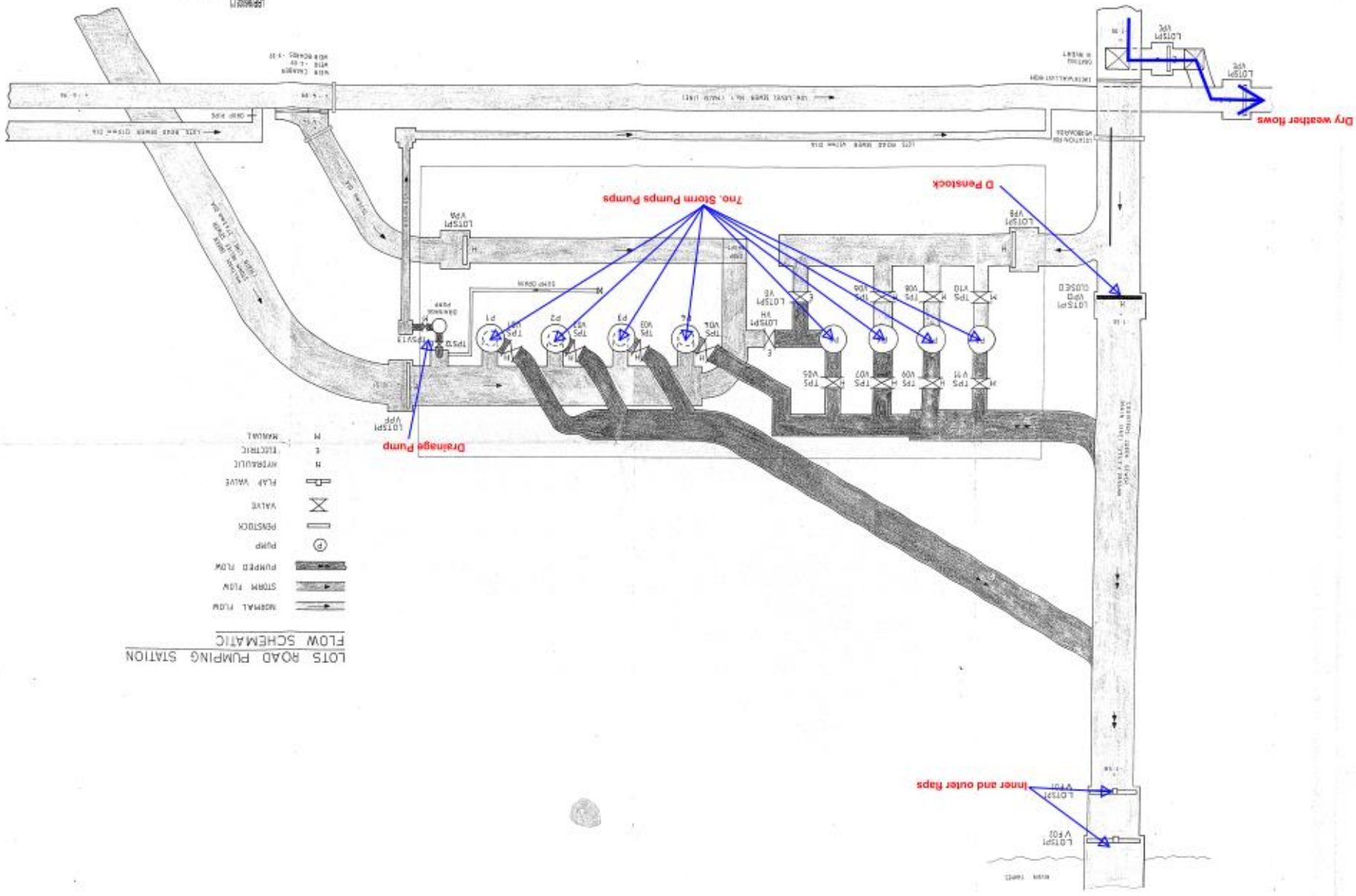
2000

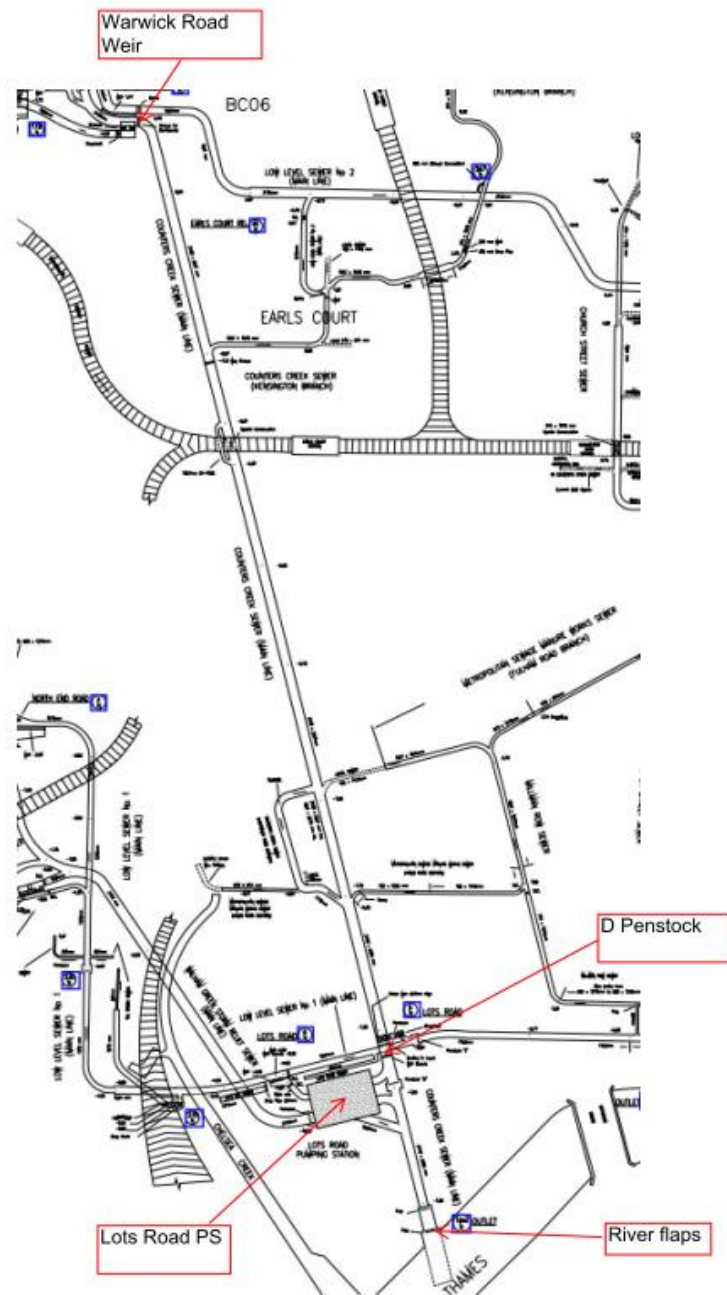


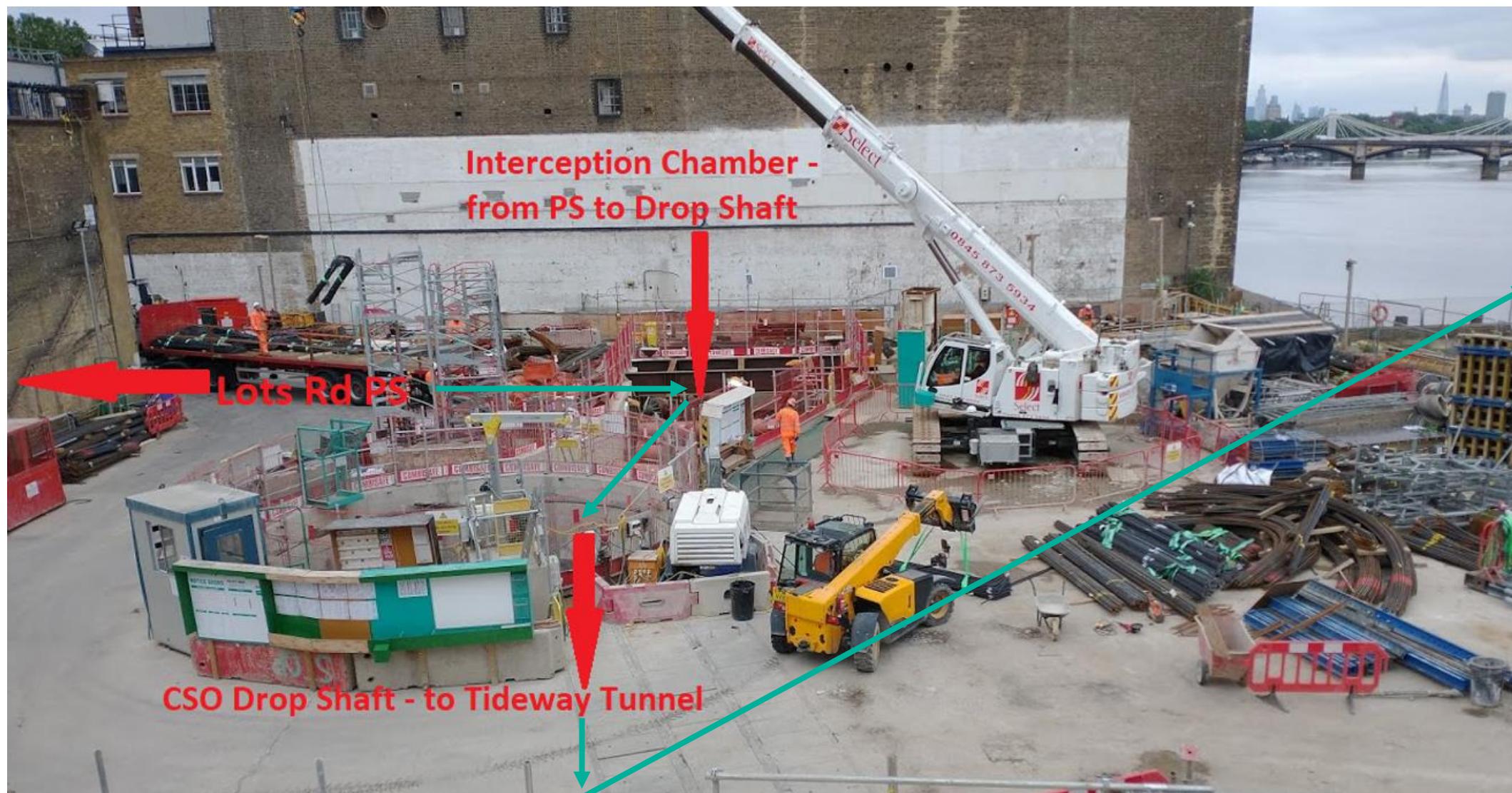
WATER PUMPING STATION

# LOTS ROAD PUMPING STATION FLOW SCHEMATIC

NORMAL FLOW	→
STORM FLOW	→
PUMPED FLOW	→
PUMP	⊙
PENSTOCK	— —
VALVE	X
FLAP VALVE	⌞
HYDRAULIC	H
ELECTRIC	E
MANUAL	M













**ANY QUESTIONS?**



**Tideway**

# **RECONNECTING LONDON WITH THE RIVER THAMES**

**#SuperSewer**

[www.tideway.london](http://www.tideway.london)